

10 September 2015

Industrial Production Index (IPI). Base 2010
July 2015. *Provisional data*

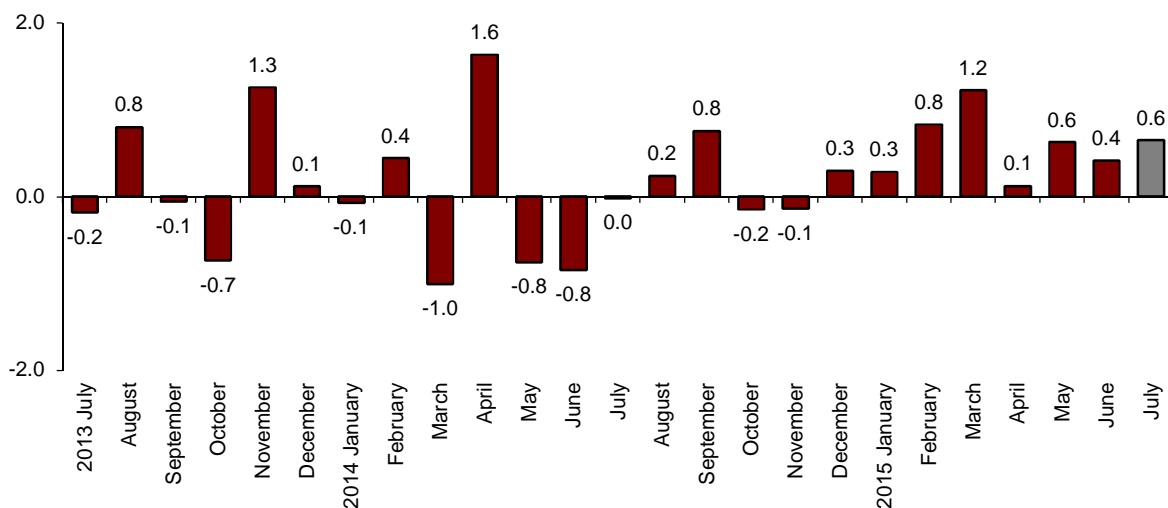
The monthly variation of the Industrial Production Index stands at 0.6%, after adjusting the seasonal and calendar effects

The annual rate of the Industrial Production Index stands at 5.2% in the series adjusted for the seasonal and calendar effects and at 5.8% in the original series

Monthly evolution of the Industrial Production

After adjusting the seasonal and calendar effects, the monthly variation of the Industrial Production Index (IPI) between July and June 2015 stood at 0.6%. This rate was 0.2 points higher than that registered in June.

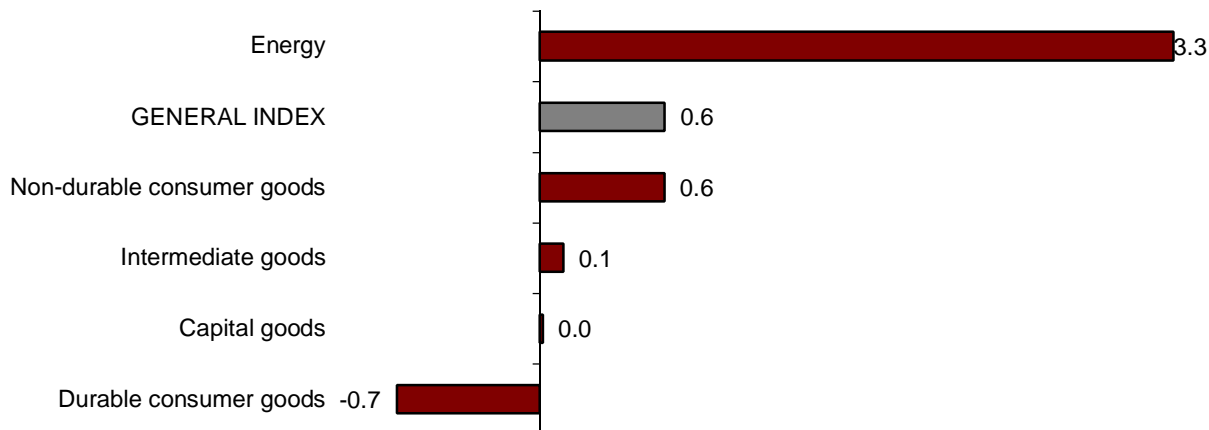
General Industrial Production Index
Adjusted for seasonal and calendar effects. Monthly rate



By industrial sectors, Energy (3.3%) and Non-durable consumer goods (0.6%) registered the greatest positive monthly variation rates.

In turn, Durable consumer goods (-0.7%) was the only sector that registered a negative monthly rate.

Industrial Production Indices: General and by economic destination of the goods. Adjusted for seasonal and calendar effects. Monthly rate



A more detailed analysis showed the activities that registered the highest and lowest monthly rates in the month of July.

Activities with the highest annual rates of the Industrial Production Indices adjusted for seasonal and calendar effects

Activity (Division from CNAE 2009)	Monthly rate (%)
Tobacco industry	14.2
Graphic arts and reproduction of recorded media	7.2
Manufacture of beverages	5.6

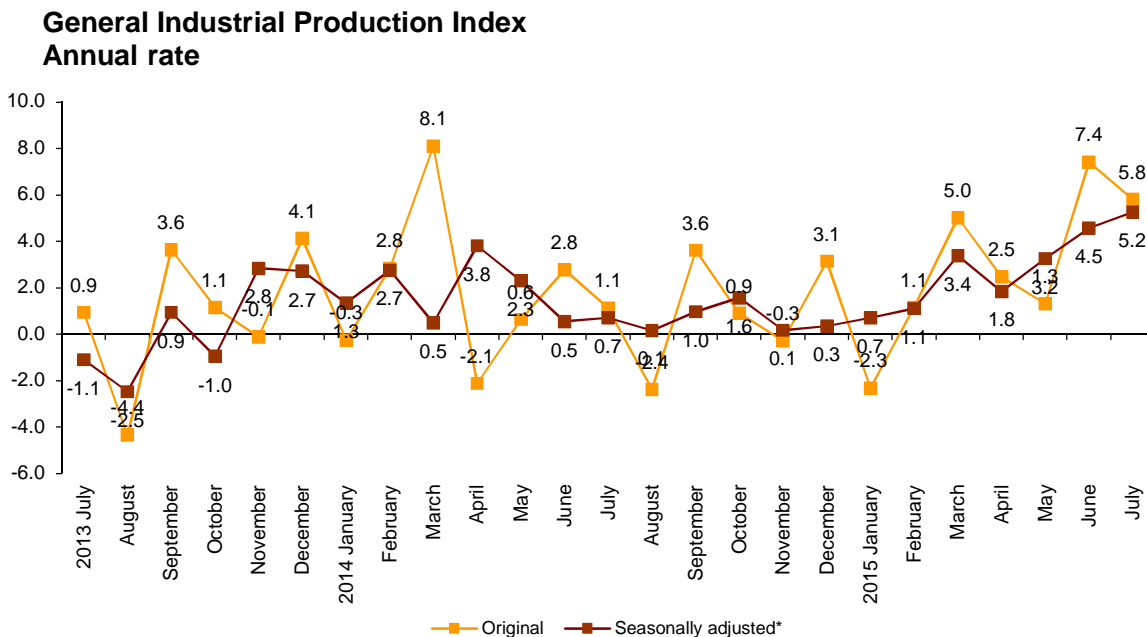
Activities with the lowest annual rates of the Industrial Production Indices adjusted for seasonal and calendar effects

Activity (Division from CNAE 2009)	Monthly rate (%)
Extraction of anthracite, coal and lignite	-8.8
Manufacture of computers, electronic and optical products	-6.1
Other mining and quarrying	-3.7

Annual evolution of the Industrial Production

After adjusting the seasonal and calendar effects, the Industrial Production Index registered a variation of 5.2% in July, as compared with the same month of the previous year. This rate was 0.7 points higher than that registered in June.

The original series of the IPI recorded an annual variation of 5.8%. This rate was 1.6 points lower than that of June.



After adjusting the seasonal and calendar effects, all sectors registered positive annual rates.

Capital goods (10.2%), and Energy (9.4%) registered the greatest annual rates.

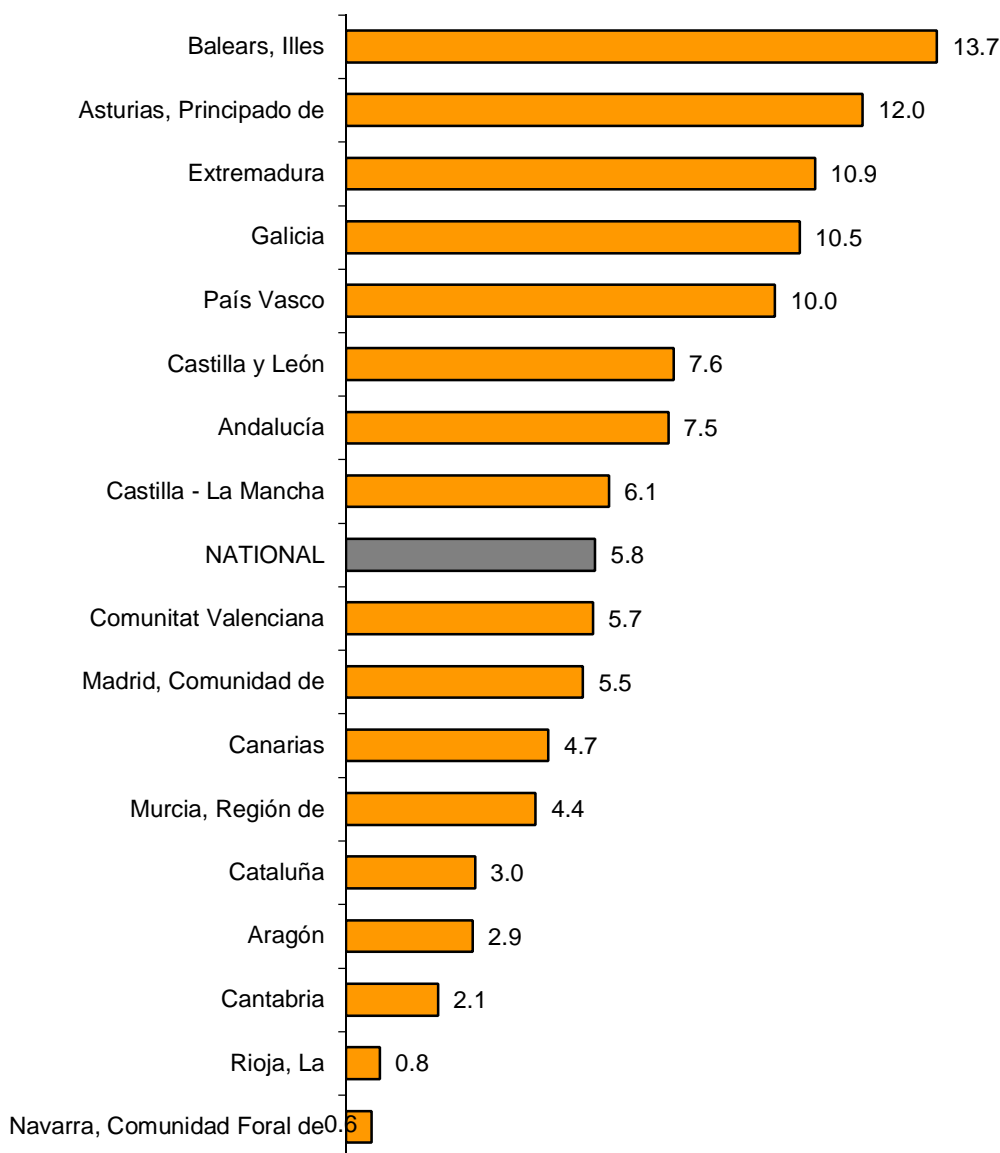
Annual rates of the Industrial Production Indices: General and by economic destination of the goods		
	Original index	Seasonally adjusted index
	Annual rate(%)	Annual rate (%)
GENERAL INDEX	5.8	5.2
1. Consumer goods	1.8	1.5
1.1. Durable consumer goods	3.8	3.8
1.2. Non-durable consumer goods	1.6	0.8
2. Capital goods	10.9	10.2
3. Intermediate goods	3.9	3.6
4. Energy	9.2	9.4

Results by Autonomous Community. Annual variation rates of the Industrial Production. Original series

The annual rate of the Industrial Production increased in all the Autonomous Communities. The greatest increases were registered in Illes Balears (13.7%), Principado de Asturias (12.0%) and Extremadura (10.9%).

In turn, the greatest decreases were registered in Comunidad Foral de Navarra (0.6%), La Rioja (0.8%), and Cantabria (2.1%).

General indices: national and by Autonomous Community Annual rate of the Industrial Production Index



Industrial Production Indices. Base 2010

July 2015

Provisional data

1. General index by economic destination of the goods. Adjusted for seasonal and calendar effects

	Index	Rate (%)		
		Monthly	Annual	Year-to-date average
GENERAL INDEX	95.9	0.6	5.2	2.8
1. Consumer goods	94.5	1.0	1.5	0.2
1.1. Durable consumer goods	68.2	-0.7	3.8	2.6
1.2. Non-durable consumer goods	97.2	0.6	0.8	0.2
2. Capital goods	98.6	0.0	10.2	4.9
3. Intermediate goods	92.4	0.1	3.6	3.6
4. Energy	101.8	3.3	9.4	3.2

2. General index by economic destination of the goods. Adjusted for calendar effects

	Index	Rate (%)	
		Annual	Year-to-date average
GENERAL INDEX	104.2	5.6	3.0
1. Consumer goods	101.8	1.7	0.2
1.1. Durable consumer goods	76.2	3.6	3.0
1.2. Non-durable consumer goods	105.1	1.5	0.0
2. Capital goods	107.6	10.6	5.3
3. Intermediate goods	99.1	3.7	3.8
4. Energy	113.1	9.3	3.3

3. General index by economic destination of the goods. Original indices

	Index	Rate (%)		Repercussion
		Annual	Year-to-date average	Annual
GENERAL INDEX	106.6	5.8	3.0	
1. Consumer goods	104.6	1.8	0.2	0.513
1.1. Durable consumer goods	78.8	3.8	3.1	0.083
1.2. Non-durable consumer goods	107.6	1.6	0.0	0.429
2. Capital goods	110.8	10.9	5.4	2.266
3. Intermediate goods	101.3	3.9	3.8	1.207
4. Energy	113.8	9.2	3.3	1.810

4. General index by branch of activity (CNAE 2009)

	Index	Rate (%)		Repercussion
		Annual	Year-to-date average	Annual
GENERAL INDEX	106.6	5.8	3.0	
B. Mining and quarrying industries	50.8	-9.7	-3.1	-0.062
Extraction of anthracite, coal and lignite	20.7	-43.3	-32.9	-0.041
National crude petroleum and natural gas
Extraction of metallic ores
Other mining and quarrying	58.7	-3.6	4.2	-0.019
C. Manufacturing industry	105.6	5.0	3.0	4.095
Food Industry	104.2	-0.6	-0.4	-0.078
Manufacture of beverages.	125.7	4.6	-0.1	0.192
Tobacco industry.	78.6	-13.0	-18.0	-0.035
Textile industry	116.0	4.6	4.2	0.056
Manufacture of garments	82.3	-16.4	-12.9	-0.213
Leather and footwear industry	121.5	0.4	-1.5	0.003
Manufacture of wood and of products of wood and cork, except furniture; basketm	98.5	8.8	4.8	0.116
Manufacture of paper and paper-products	108.6	3.4	2.4	0.095
Graphic arts and reproduction of recorded media	71.8	11.4	0.7	0.166
Manufacture of coke and refined petroleum products	115.7	5.0	4.0	0.095
Chemical Industry	110.9	3.3	3.5	0.208
Manufacture of pharmaceutical products	124.9	6.6	4.1	0.250
Rubber and plastic material transformation industry	109.1	3.9	5.7	0.175
Manufacture of other non-metallic ore products	82.1	3.9	3.7	0.159
Metallurgy; manufacture of iron, steel and ferro-alloy products	97.1	2.7	0.3	0.096
Manufacture of metal products, except machinery and equipment	101.2	11.8	3.4	0.928
Manufacture of computers, electronic and optical products	90.3	5.5	11.6	0.067
Manufacture of electrical material and equipment	98.1	2.7	4.0	0.082
Manufacture of machinery and equipment n.e.c.	123.9	7.7	-0.3	0.371
Manufacture of motor vehicles, trailers and semi-trailers	136.9	11.4	10.6	0.904
Manufacture of other transport equipment	85.2	7.0	-2.2	0.153
Manufacture of furniture.	81.2	5.4	6.6	0.077
Other manufacturing industries	121.5	1.9	5.0	0.024
Repair and installation of machinery and equipment	87.2	11.0	12.0	0.202
D. Supply of electrical energy, gas, steam and air conditioning	102.2	9.8	2.6	1.302
E. Water supply, activities, waste management and decontamination*	189.2	10.8	7.8	0.459

* It only includes Water collection, treatment and supply

(..) Data not available due to statistical secrecy.

5. General Industrial Production Indices: national and by Autonomous Community

	Index	Rate (%)	
		Annual	Year-to-date average
NACIONAL	106.6	5.8	3.0
Andalucía	105.8	7.5	2.6
Aragón	117.4	2.9	2.3
Asturias, Principado de	103.9	12.0	9.1
Balears, Illes	116.5	13.7	4.3
Canarias	102.3	4.7	0.6
Cantabria	94.1	2.1	-1.3
Castilla y León	105.0	7.6	1.8
Castilla-La Mancha	105.0	6.1	4.9
Cataluña	111.8	3.0	2.1
Comunitat Valenciana	116.3	5.7	5.1
Extremadura	96.3	10.9	3.1
Galicia	97.2	10.5	3.7
Madrid, Comunidad de	95.2	5.5	3.0
Murcia, Región de	106.8	4.4	4.6
Navarra, Comunidad Foral de	97.6	0.6	1.6
País Vasco	105.4	10.0	3.5
Rioja, La	103.6	0.8	2.2

More detailed information by Autonomous Community may be obtained at:

Andalucía	www.juntadeandalucia.es/institutodeestadisticaycartografia
Aragón	www.aragon.es/iaest/ipi
Principado de Asturias	www.sadei.es
Illes Balears	www.ibestat.caib.es
Canarias	www.gobiernodecanarias.org/istac
Cantabria	www.icane.es
Castilla y León	www.jcyl.es/estadistica
Castilla - La Mancha	www.jccm.es/estadistica
Cataluña	www.idescat.cat
Comunitat Valenciana	www.ive.es
Extremadura	http://estadistica.gobex.es
Galicia	www.ige.xunta.es
Comunidad de Madrid	www.madrid.org/iestadis
Región de Murcia	www.carm.es/econet
La Rioja	www.larioja.org

For further information see INEbase - www.ine.es/en/

All press releases at: www.ine.es/en/prensa/prensa_en.htm

Press Office: Telephone numbers: 91 583 93 63 / 94 08 – Fax: 91 583 90 87 - gprensa@ine.es

Information Area: Telephone number: 91 583 91 00 – Fax: 91 583 91 58 – www.ine.es/infoine/?L=1