

07 September 2018

**Industrial Production Indices (IPI). Base 2015**

July 2018. *Provisional data*

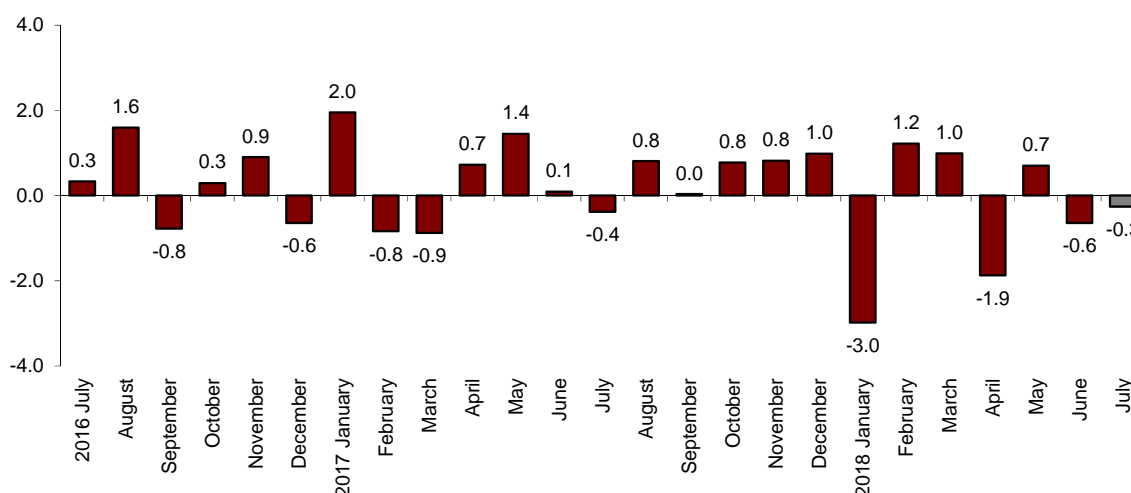
**The monthly variation of the Industrial Production Index stands at -0.3%, after adjusting for seasonal and calendar effects**

**The annual rate of the Industrial Production Index stands at 0.5% in the series adjusted for seasonal and calendar effects and at 2.8% in the original series**

**Monthly evolution of industrial production**

The monthly variation of the Industrial Production Index (IPI) between the months of July and June, after adjusting for seasonal and calendar effects, was -0.3%. This rate is 0.3 points higher than that observed in June.

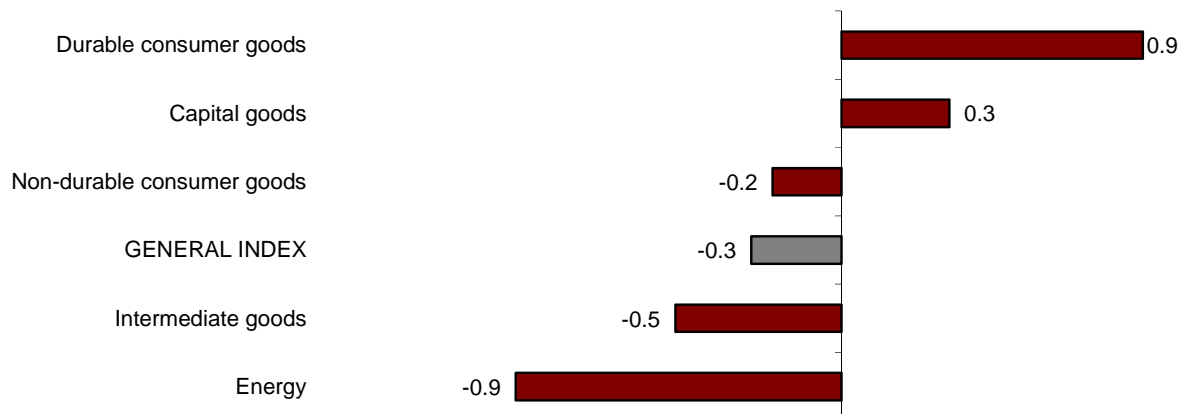
**General Industrial Production Index  
Adjusted for seasonal and calendar effects. Monthly rate**



By sector, *Durable consumer goods* (0.9%) and *Capital goods* (0.3%) registered positive monthly rates.

In turn, *Energy* (-0.9%), *Intermediate goods* (-0.5%) and *Non-durable consumer goods* (-0.2%) registered negative monthly rates.

## Industrial Production Indices: General and by economic destination of the goods. Adjusted for seasonal and calendar effects. Monthly rate



A more detailed analysis shows the branches of activity with the greatest and lowest monthly rates in the month of July.

### Activities with the highest annual rates of the Industrial Production Indices adjusted for seasonal and calendar effects

Activity (Division from CNAE 2009)	Monthly rate (%)
Extraction of anthracite, coal and lignite	41.4
Manufacture of garments	10.0
Manufacture of coke and refined petroleum products	4.0

### Activities with the lowest annual rates of the Industrial Production Indices adjusted for seasonal and calendar effects

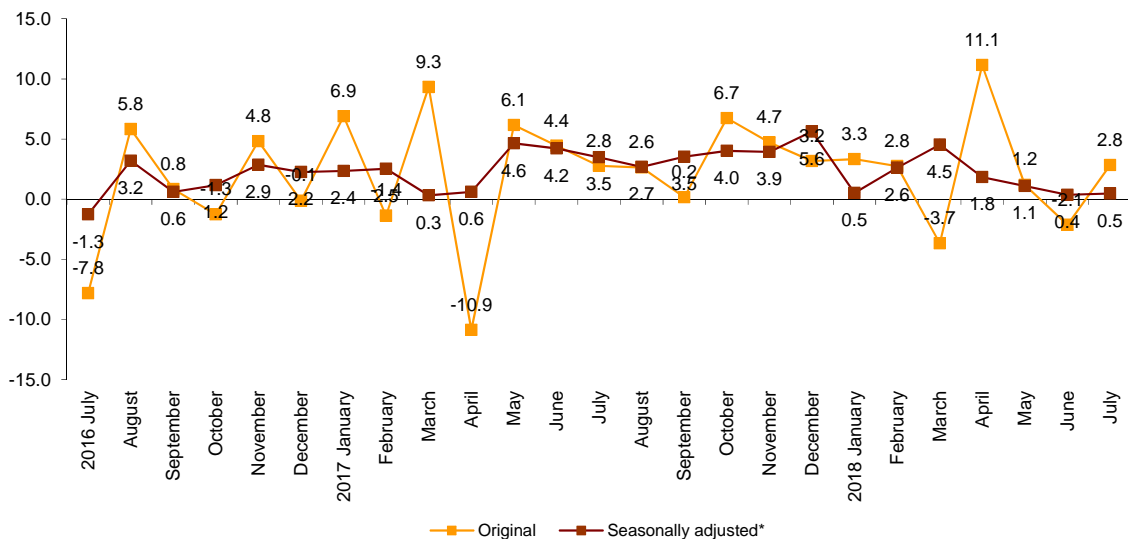
Activity (Division from CNAE 2009)	Monthly rate (%)
Tobacco industry	-4.9
Other mining and quarrying	-3.6
Other manufacturing industries	-3.2

## Annual evolution of industrial production

The Industrial Production Index, adjusted for seasonal and calendar effects, recorded a variation rate of 0.5% in July, compared to the same month of the previous year. This rate is 0.1 points higher than that observed in June.

The original series of the IPI experienced an annual variation of 2.8%. This rate is 4.9 points higher than in June.

**General Industrial Production Index**  
Annual rate



For the indices adjusted for seasonal and calendar effects, *Capital goods* (3.4%) and *Intermediate goods* (2.5%) registered positive annual rates.

In turn, *Energy* (-4.8%), and *Durable consumer goods* and *Non-durable consumer goods* (both with -1.3%) registered negative monthly rates.

### Annual rates of the Industrial Production Indices: General and by economic destination of the goods

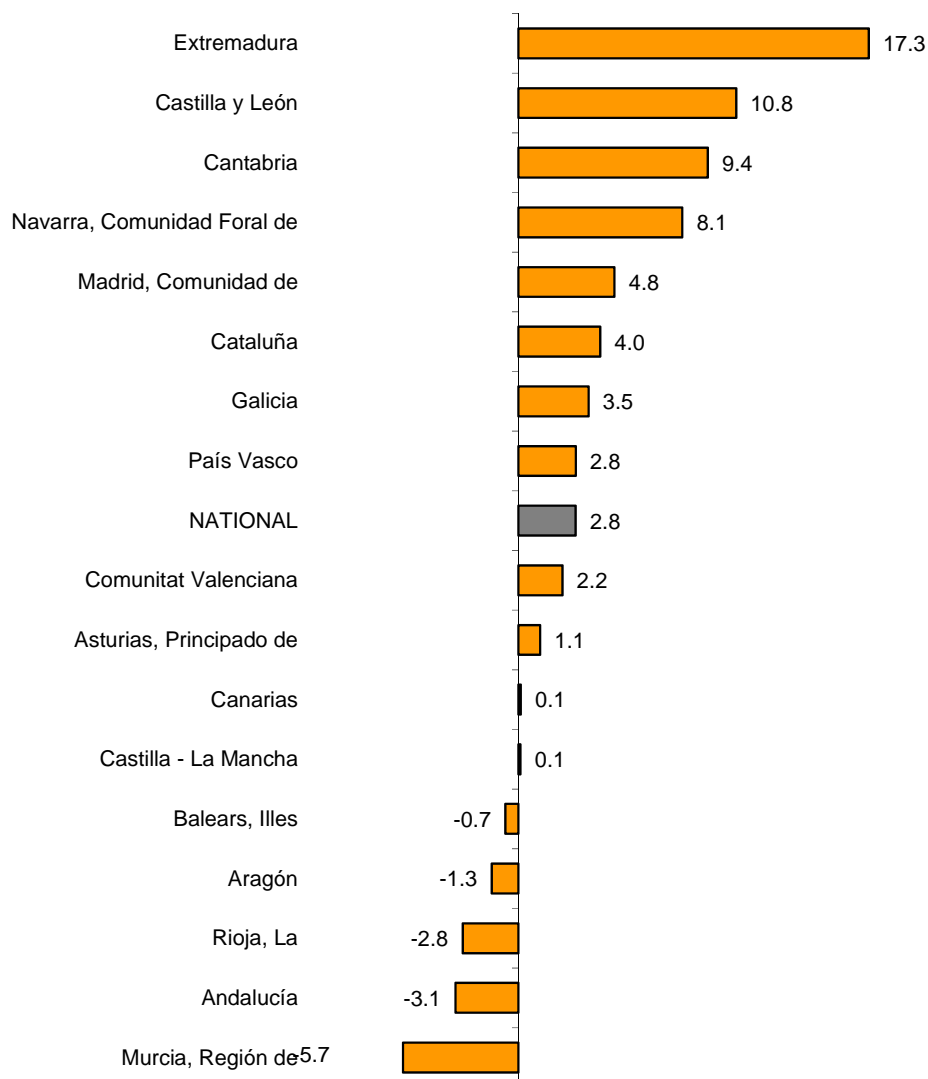
	Original index	Seasonally adjusted index
	Annual rate(%)	Annual rate (%)
<b>GENERAL INDEX</b>	2.8	0.5
1. Consumer goods	2.0	-1.1
1.1. Durable consumer goods	2.9	-1.3
1.2. Non-durable consumer goods	1.9	-1.3
2. Capital goods	7.4	3.4
3. Intermediate goods	5.2	2.5
4. Energy	-4.4	-4.8

## Results by Autonomous Communities. Annual variation rates of industrial production. Original series

In July, the annual rate of industrial production was positive in 12 Autonomous Communities. Extremadura (17,3%), Castilla y León (10,8%) and Cantabria (9,4%) recorded the greatest increases.

In turn, the largest decreases were registered in Región de Murcia (-5,7%), Andalucía (-3,1%) and La Rioja (-2,8%).

### General indices: national and by Autonomous Community Annual rate of the Industrial Production Index



For further information see **INEbase**: [www.ine.es/en/](http://www.ine.es/en/) Twitter: [@es\\_ine](https://twitter.com/es_ine)

All press releases at: [www.ine.es/en/prensa/prensa\\_en.htm](http://www.ine.es/en/prensa/prensa_en.htm)

**Press office:** Telephone numbers: (+34) 91 583 93 63 /94 08 – [gprensa@ine.es](mailto:gprensa@ine.es)

**Information Area:** Telephone number: (+34) 91 583 91 00 – [www.ine.es/infoine/?L=1](http://www.ine.es/infoine/?L=1)

## Industrial Production Indices. Base 2015

July 2018

Provisional data

### 1. General index by economic destination of the goods. Adjusted for seasonal and calendar effects

	Index	Rate (%)		
		Monthly	Annual	Year-to-date average
<b>GENERAL INDEX</b>	<b>105.1</b>	<b>-0.3</b>	<b>0.5</b>	<b>1.6</b>
1. Consumer goods	101.0	-0.5	-1.1	-0.3
1.1. Durable consumer goods	105.3	0.9	-1.3	-1.6
1.2. Non-durable consumer goods	100.7	-0.2	-1.3	-0.4
2. Capital goods	111.8	0.3	3.4	3.7
3. Intermediate goods	109.9	-0.5	2.5	3.4
4. Energy	94.3	-0.9	-4.8	-0.7

### 2. General index by economic destination of the goods. Adjusted for calendar effects

	Index	Rate (%)	
		Annual	Year-to-date average
<b>GENERAL INDEX</b>	<b>110.2</b>	<b>-0.1</b>	<b>1.5</b>
1. Consumer goods	105.7	-1.5	-0.3
1.1. Durable consumer goods	114.9	-1.6	-1.8
1.2. Non-durable consumer goods	104.9	-1.3	-0.4
2. Capital goods	118.6	3.3	3.5
3. Intermediate goods	114.4	2.2	3.2
4. Energy	101.0	-5.2	-0.8

### 3. General index by economic destination of the goods. Original indices

	Index	Rate (%)		Repercussion Annual
		Annual	Year-to-date average	
<b>GENERAL INDEX</b>	<b>110.0</b>	<b>2.8</b>	<b>2.0</b>	
1. Consumer goods	105.4	2.0	0.2	0.490
1.1. Durable consumer goods	114.8	2.9	-1.2	0.060
1.2. Non-durable consumer goods	104.6	1.9	0.3	0.430
2. Capital goods	118.4	7.4	3.9	1.694
3. Intermediate goods	114.4	5.2	3.6	1.593
4. Energy	101.0	-4.4	-0.6	-0.948

#### 4. General index by branch of activity (CNAE 2009)

	Index	Rate (%)		Repercussion
		Annual	Year-to-date average	Annual
<b>GENERAL INDEX</b>	<b>110.0</b>	<b>2.8</b>	<b>2.0</b>	
<b>B. Mining and quarrying industries</b>	99.2	-3.5	3.2	-0.023
Extraction of anthracite, coal and lignite	..	..	..	..
National crude petroleum and natural gas	..	..	..	..
Extraction of metallic ores	..	..	..	..
Other mining and quarrying	99.3	3.3	2.4	0.017
<b>C. Manufacturing industry</b>	112.5	4.7	2.6	3.751
Food Industry	100.7	2.4	0.6	0.258
Manufacture of beverages.	115.3	-0.8	-2.9	-0.029
Tobacco industry.	..	..	..	..
Textile industry	114.4	4.3	1.1	0.048
Manufacture of garments	147.6	10.9	-1.4	0.126
Leather and footwear industry	104.2	3.9	-1.1	0.034
Manufacture of wood and of products of wood and cork, except furniture; basketm	118.6	6.8	7.0	0.087
Manufacture of paper and paper-products	106.2	1.7	0.5	0.042
Graphic arts and reproduction of recorded media	75.1	1.9	-1.3	0.021
Manufacture of coke and refined petroleum products	108.1	-1.8	2.5	-0.044
Chemical Industry	112.0	1.8	2.8	0.111
Manufacture of pharmaceutical products	108.0	0.1	1.9	0.003
Rubber and plastic material transformation industry	114.1	2.8	2.8	0.134
Manufacture of other non-metallic ore products	117.0	5.3	2.2	0.203
Metallurgy; manufacture of iron, steel and ferro-alloy products	108.0	3.4	3.0	0.112
Manufacture of metal products, except machinery and equipment	120.2	10.3	3.7	0.825
Manufacture of computers, electronic and optical products	115.3	10.1	8.2	0.104
Manufacture of electrical material and equipment	114.4	11.6	5.8	0.311
Manufacture of machinery and equipment n.e.c.	135.6	5.7	6.5	0.313
Manufacture of motor vehicles, trailers and semi-trailers	111.3	11.1	2.9	0.850
Manufacture of other transport equipment	113.7	0.4	1.6	0.011
Manufacture of furniture.	123.9	2.8	1.0	0.040
Other manufacturing industries	123.1	4.1	3.5	0.049
Repair and installation of machinery and equipment	116.4	5.5	7.5	0.155
<b>D. Supply of electrical energy, gas, steam and air conditioning</b>	94.8	-5.3	0.0	-0.824
<b>E. Water supply, activities, waste management and decontamination*</b>	132.2	-2.1	-6.4	-0.074

\* It only includes Water collection, treatment and supply

(..) Data not available due to statistical secrecy.

## 5. General Industrial Production Indices: national and by Autonomous Community

	Index	Rate (%)	
		Annual	Year-to-date average
<b>NACIONAL</b>	<b>110.0</b>	<b>2.8</b>	<b>2.0</b>
Andalucía	106.3	-3.1	-1.5
Aragón	109.8	-1.3	2.3
Asturias, Principado de	104.4	1.1	1.9
Balears, Illes	112.7	-0.7	-4.4
Canarias	102.8	0.1	1.7
Cantabria	111.6	9.4	9.0
Castilla y León	106.1	10.8	3.7
Castilla-La Mancha	104.8	0.1	0.2
Cataluña	115.8	4.0	3.5
Comunitat Valenciana	111.7	2.2	-0.1
Extremadura	104.6	17.3	3.7
Galicia	112.7	3.5	7.3
Madrid, Comunidad de	111.2	4.8	-0.2
Murcia, Región de	109.1	-5.7	2.2
Navarra, Comunidad Foral de	95.1	8.1	1.3
País Vasco	109.7	2.8	2.5
Rioja, La	94.4	-2.8	-1.2

More detailed information by Autonomous Community may be obtained at:

Andalucía	<a href="http://www.juntadeandalucia.es/institutodeestadisticaycartografia">www.juntadeandalucia.es/institutodeestadisticaycartografia</a>
Aragón	<a href="http://www.aragon.es/iaest/ipi">www.aragon.es/iaest/ipi</a>
Principado de Asturias	<a href="http://www.sadei.es">www.sadei.es</a>
Illes Balears	<a href="http://www.ibestat.caib.es">www.ibestat.caib.es</a>
Canarias	<a href="http://www.gobiernodecanarias.org/istac">www.gobiernodecanarias.org/istac</a>
Cantabria	<a href="http://www.icane.es">www.icane.es</a>
Castilla y León	<a href="http://www.jcyl.es/estadistica">www.jcyl.es/estadistica</a>
Castilla - La Mancha	<a href="http://www.jccm.es/estadistica">www.jccm.es/estadistica</a>
Cataluña	<a href="http://www.idescat.cat">www.idescat.cat</a>
Comunitat Valenciana	<a href="http://www.ive.es">www.ive.es</a>
Extremadura	<a href="http://estadistica.juntaex.es">http://estadistica.juntaex.es</a>
Galicia	<a href="http://www.ige.xunta.es">www.ige.xunta.es</a>
Comunidad de Madrid	<a href="http://www.madrid.org/iestadis">www.madrid.org/iestadis</a>
Región de Murcia	<a href="http://econet.carm.es">http://econet.carm.es</a>
La Rioja	<a href="http://www.larioja.org">www.larioja.org</a>