

8 October 2013

Industrial Production Index (IPI). Base 2005
August 2013. *Provisional data*

The annual variation of the Industrial Production Index stands at –4.0% in August, as compared with 0.6% in July

The adjusted for calendar effect annual rate of the IPI stands at –2.0%, as compared with –1.2% in July

Annual evolution of industrial production

The Industrial Production Index (IPI) registered an annual rate of –4.0% in August, more than four and a half points below that registered in July.

All the industrial sectors by economic destination of the goods registered negative annual variations. Those with a greater negative effect were:

- **Intermediate goods** registered an annual variation of –5.4% and had the greatest negative effect, –1.689. Production decreased in nearly all the activities in this sector. It is worth highlighting, by its effect, *Manufacture of other material and electrical equipment*, *Manufacture of articles of concrete, cement and plaster* and *Extraction of stone, sand, and clay*. Nonetheless, *Manufacture of other chemical products* is the activity with the greatest positive effect of the sector.
- **Energy** registered an annual variation of –6.7% and an effect of –1.357 due to the decrease in the production of all the activities in this sector. Among them it is worth highlighting, by its influence, *Production, transport and distribution of electrical energy* and *Refined of petroleum*.
- **Non-durable consumer goods**, with a rate of –1.1% and an effect of –0.349. More than a half of the activities comprising this sector registered a decrease in their production, being the most important, by its influence, the observed in *Printing and reproduction of recorded media*. Among the activities that registered an increase in the production, highlighting, *Manufacture of other food products*.

A more detailed analysis showed the activities that most affected the annual rate of IPI in the month of August 2013.

Activities with the greatest positive effect on the annual rate of the IPI

Activity (CNAE 2009 group)	Annual rate (%)	Effect
Manufacture of motor vehicles	27.5	0.395
Manufacture of other chemical products	18.1	0.293
Manufacture of other food products	9.6	0.262
Manufacture of dairy products	9.8	0.190

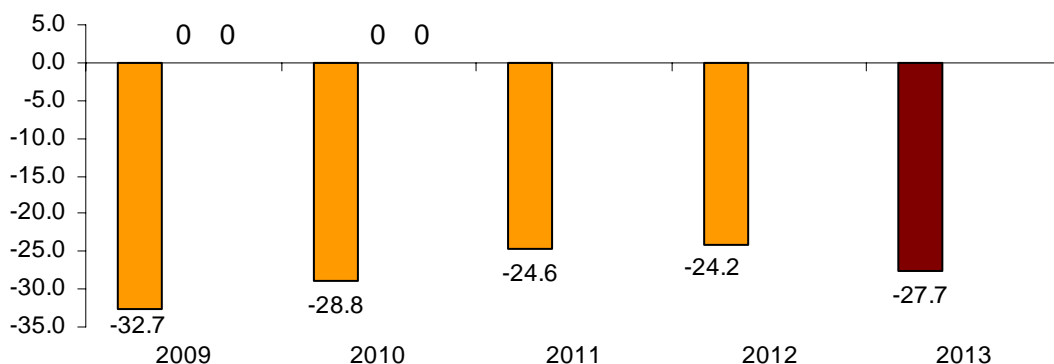
Activities with the greatest negative effect on the annual rate of the IPI

Activity (CNAE 2009 group)	Annual rate (%)	Effect
Production, transport and distribution of electrical energy	-6.4	-0.805
Printing and reproduction of recorded media	-17.5	-0.447
Refined of petroleum	-6.6	-0.398
Manufacture of metal products for construction	-14.4	-0.356

Monthly rate evolution¹

The variation rate of IPI in August as compared with July 2013 was -27.7%.

**Evolution of the monthly rate of the IPI
(variation of August, as compared with July of the same year)**



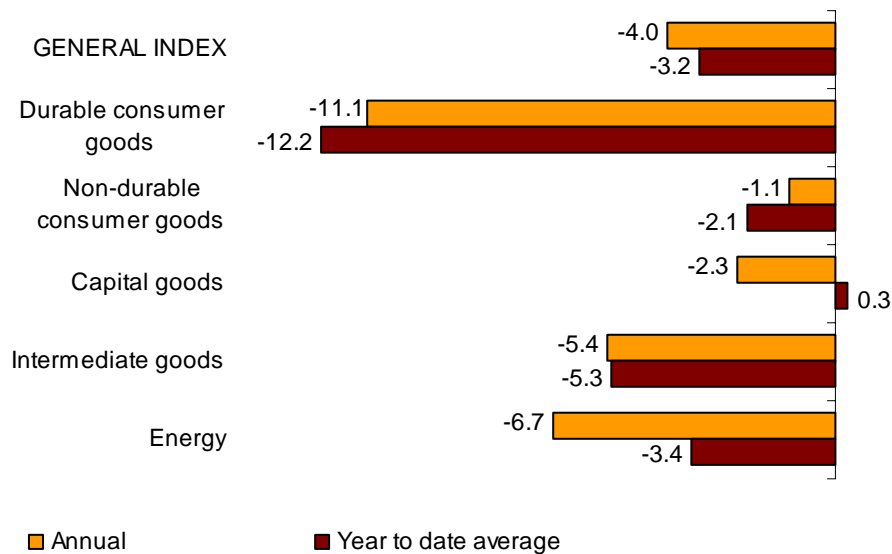
¹ In order to contribute to the analysis and interpretation of data, it has been added in this section the performance of the monthly IPI rate in August in the last years. The monthly rates of this type of series may have a seasonal behavior; therefore it is advisable to evaluate it in relation to the item of data for the same month in previous years.

Year to date average rates

The average of the Industrial Production Index registered a variation of **-3.2%**, in the period comprehending January to August 2013, as compared with the same period of the previous year.

By economic destination of the goods this rate was only positive in the Capital goods sector (0.3%).

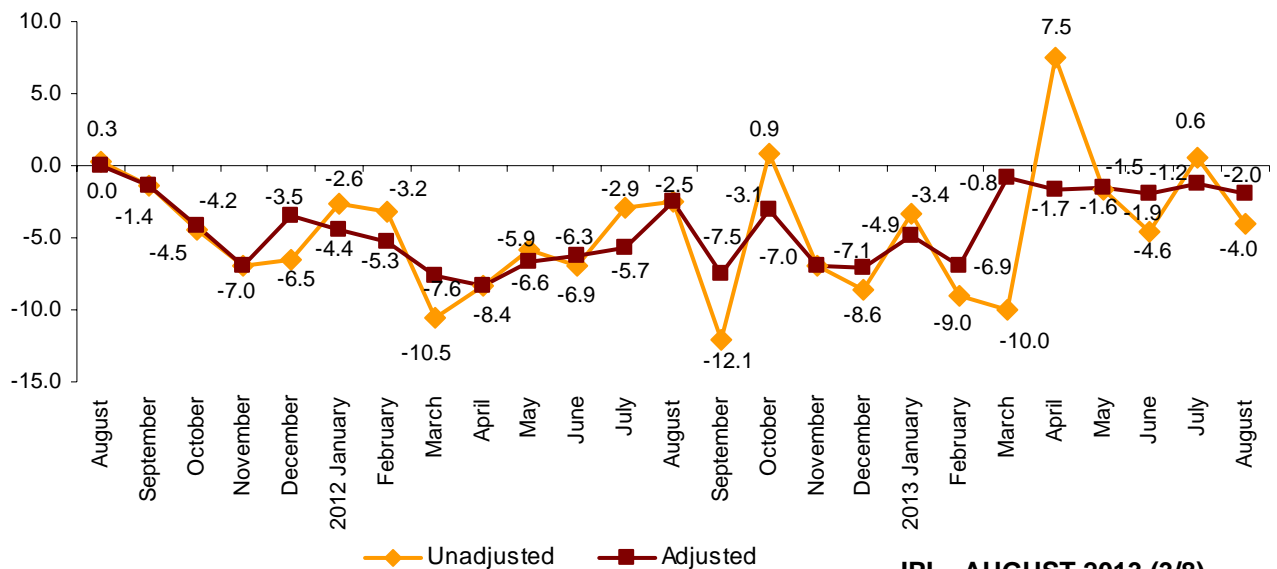
**Annual and average rates of the IPI
General index and by economic destination**



Evolution of the IPI, adjusted for the calendar effect

After adjusting the calendar effect, that is, the difference between the number of working days in a given month in different years, the annual variation of the IPI in the month of August was **-2.0%**, eight tenths below than that registered in July.

**Annual evolution of the IPI
General index adjusted and unadjusted**

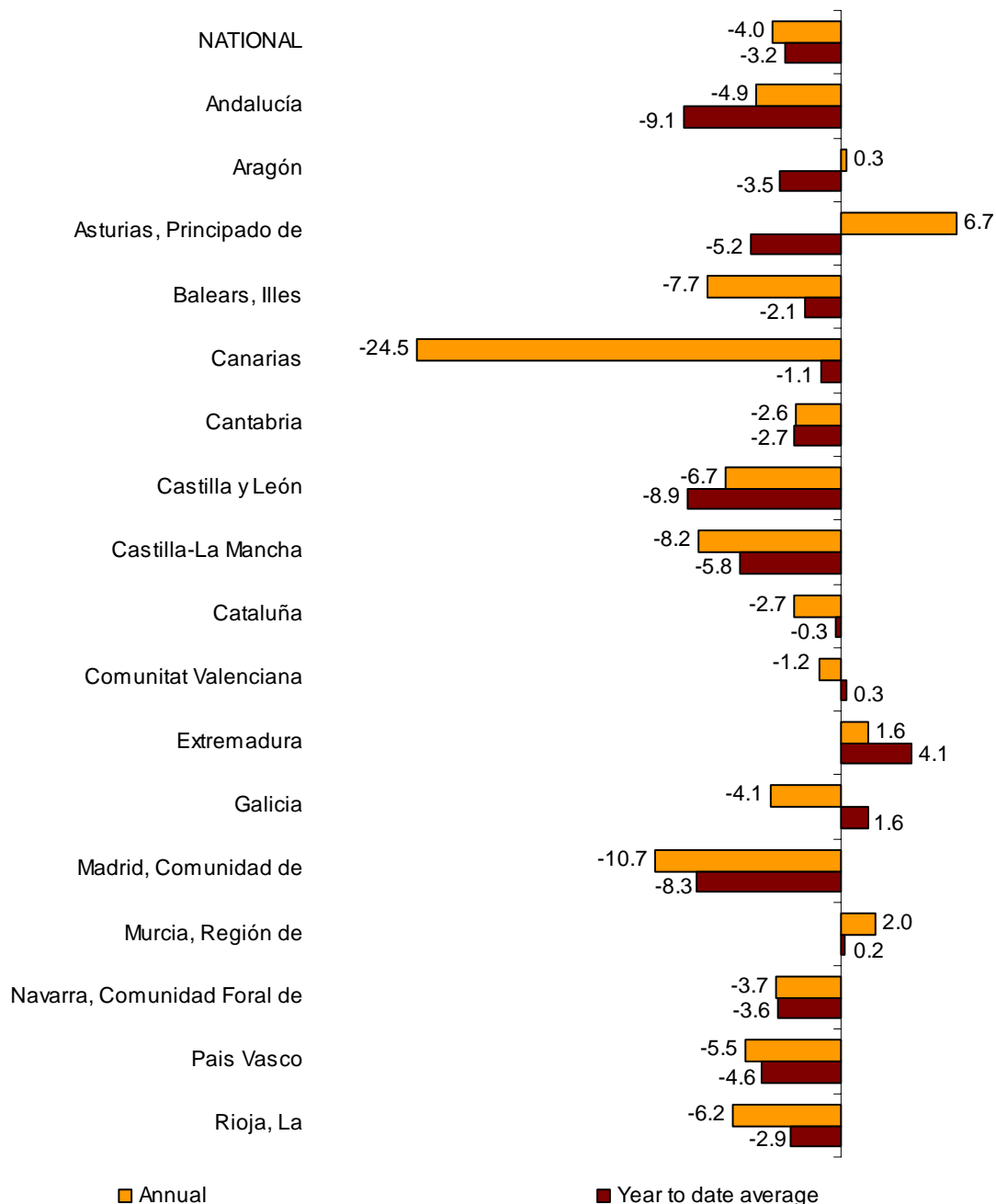


Results by Autonomous Community. Variation rates

In August, 13 Autonomous Communities registered a negative annual rate in the industrial production. The greatest decreases were registered in Canarias (-24.5%), Comunidad de Madrid (-10.7%) and Castilla-La Mancha (-8.2%).

In turn, the Autonomous Communities with the greatest increases in their annual rate were Principado de Asturias (6.7%), Región de Murcia (2.0%) and Extremadura (1.6%).

Annual and average rates of the IPI General Index, by Autonomous Community



Industrial Production Index. Base 2005 August 2013

Provisional data

8 October 2013

1. National indices by economic destination of the goods¹

	Index	% variation	
		Annual	Year-to-date average
GENERAL INDEX	60.0	-4.0	-3.2
Consumer goods	72.7	-1.9	-3.0
Durable consumer goods	31.2	-11.1	-12.2
Non-durable consumer goods	80.3	-1.1	-2.1
Capital goods	43.2	-2.3	0.3
Intermediate goods	48.8	-5.4	-5.3
Energy	90.8	-6.7	-3.4

¹ Commission Regulation (EC) n° 656/2007

2. National indices adjusted for calendar effects

	Index	% variation	
		Annual	Year-to-date average
GENERAL INDEX	60.3	-2.0	-2.6
Consumer goods	73.4	0.8	-2.3
Durable consumer goods	31.8	-7.3	-11.1
Non-durable consumer goods	81.0	1.5	-1.4
Capital goods	43.3	-0.2	0.9
Intermediate goods	49.2	-3.1	-4.6
Energy	90.8	-6.0	-3.3

3. Interannual rates. General index and by economic destination of the goods

Period	General index		Consumer goods		Durable consumer goods		Non-durable consumer goods	
	Original	Adjusted	Original	Adjusted	Original	Adjusted	Original	Adjusted
2012 August	-2.5	-2.5	-2.9	-2.8	1.2	1.2	-3.1	-3.2
September	-12.1	-7.5	-12.0	-6.1	-20.9	-12.8	-11.1	-5.5
October	0.9	-3.1	2.7	-2.4	0.7	-6.3	2.9	-2.0
November	-7.0	-7.0	-5.8	-5.8	-10.8	-10.8	-5.2	-5.2
December	-8.6	-7.1	-13.0	-11.0	-17.3	-14.6	-12.7	-10.8
2013 January	-3.4	-4.9	-5.6	-7.4	-12.1	-14.6	-5.0	-6.8
February	-9.0	-6.9	-6.8	-4.1	-14.1	-10.4	-6.1	-3.5
March	-10.0	-0.8	-11.2	-1.0	-20.4	-5.8	-10.3	-0.9
April	7.5	-1.7	11.4	1.3	1.6	-13.0	12.4	3.1
May	-1.6	-1.5	-1.9	-1.8	-14.7	-14.7	-0.4	-0.3
June*	-4.6	-1.9	-7.7	-4.2	-16.4	-11.7	-6.9	-3.5
July *	0.6	-1.2	1.3	-1.1	-7.5	-10.7	2.2	0.0
August	-4.0	-2.0	-1.9	0.8	-11.1	-7.3	-1.1	1.5

Period	Capital goods		Intermediate goods		Energy	
	Original	Adjusted	Original	Adjusted	Original	Adjusted
2012 August	-5.8	-5.9	-4.6	-4.7	4.2	4.2
September	-19.1	-14.4	-12.2	-7.2	-1.9	-0.3
October	-2.2	-6.2	-0.9	-5.2	5.7	4.3
November	-12.9	-12.8	-7.4	-7.3	-0.9	-0.9
December	-6.0	-4.6	-10.6	-9.0	0.1	0.6
2013 January	-1.1	-2.5	-2.3	-3.8	-4.0	-4.5
February	-8.0	-6.1	-11.7	-9.5	-9.0	-8.3
March	-8.2	3.0	-13.4	-4.7	-2.2	3.3
April	11.8	0.6	4.0	-4.6	2.1	-3.4
May	3.3	3.4	-4.1	-4.0	-1.8	-1.8
June*	1.6	4.3	-6.0	-3.1	-3.3	-2.5
July *	5.4	3.7	-2.1	-3.9	-1.6	-2.3
August	-2.3	-0.2	-5.4	-3.1	-6.7	-6.0

¹ Commission Regulation (EC) n° 656/2007 of 14 June 2007

* Data revised

4. General index and by branch of activity (CNAE 2009)

	Index	% variation	
		Annual	Year-to-date average
GENERAL INDEX	60.0	-4.0	-3.2
B. Mining and quarrying	31.9	-19.0	-17.7
Mining of coal and lignite	24.1	-42.3	-49.9
Other mining and quarrying	30.6	-19.9	-14.8
C. Manufacturing	57.5	-3.4	-2.7
Manufacture of food products	96.2	0.7	-1.3
Manufacture of beverages	92.4	0.5	0.5
Manufacture of tobacco products	51.9	38.4	-4.1
Manufacture of textiles	25.9	-15.1	2.3
Manufacture of wearing apparel	50.2	-10.2	-10.3
Leather and footwear industry	46.8	-14.3	-7.5
Wood and cork industry, except furniture, basketmaking and esparto	24.1	-4.4	-7.1
Paper industry	73.4	-9.2	-2.5
Printing and reproduction of recorded media	58.4	-17.7	-13.2
Manufacture of coke and refined petroleum products	101.3	-6.6	2.7
Chemical industry	88.3	2.8	-6.0
Manufacture of pharmaceutical products	83.4	7.3	0.3
Manufacture of rubber and plastic products	58.4	-4.3	-1.8
Manufacture of other non-metallic mineral products	29.4	-8.7	-9.6
Metallurgy; manufacture of iron, steel and ferro-alloy products	54.1	-1.3	-1.1
Manufacture of metal products, except machinery and equipment	39.2	-7.8	-2.2
Manufacture of computer, electronic and optical products	33.8	-19.7	-11.8
Manufacture of electrical equipment	46.8	-11.7	-8.9
Manufacture of machinery and equipment n.e.c.	56.2	-0.4	2.0
Manufacture of motor vehicles, trailers and semi-trailers	38.2	7.9	1.9
Manufacture of other transport equipment	34.6	-18.2	-7.7
Manufacture of furniture	25.1	-21.3	-14.0
Other manufacturing	42.3	-4.3	1.0
Repair and installation of machinery and equipment	89.7	5.4	0.1
D. Electricity, gas, steam and air conditioning supply	89.1	-6.6	-5.3

5. General index by Autonomous Community

	Index	% variation	
		Annual	Year-to-date average
NATIONAL INDEX	60.0	-4.0	-3.2
Andalucía	59.7	-4.9	-9.1
Aragón	59.8	0.3	-3.5
Asturias, Principado de	70.3	6.7	-5.2
Balears, Illes	68.3	-7.7	-2.1
Canarias	60.7	-24.5	-1.1
Cantabria	81.0	-2.6	-2.7
Castilla y León	55.7	-6.7	-8.9
Castilla-La Mancha	63.5	-8.2	-5.8
Cataluña	58.6	-2.7	-0.3
Comunitat Valenciana	59.1	-1.2	0.3
Extremadura	86.5	1.6	4.1
Galicia	70.4	-4.1	1.6
Madrid, Comunidad de	46.7	-10.7	-8.3
Murcia, Región de	69.9	2.0	0.2
Navarra, Comunidad Foral de	50.1	-3.7	-3.6
País Vasco	49.7	-5.5	-4.6
Rioja, La	49.6	-6.2	-2.9

More detailed information by Autonomous Community can be obtained at:

Andalucía	www.juntadeandalucia.es/institutodeestadistica
Aragón	www.aragon.es/iaest/ipi
Principado de Asturias	www.sadei.es
Illes Balears	www.ibestat.caib.es
Canarias	www.gobiernodecanarias.org/istac
Cantabria	www.icane.es
Castilla y León	www.jcyl.es/estadistica
Castilla - La Mancha	www.jccm.es/estadistica
Cataluña	http://www.idescat.cat/en/
Comunitat Valenciana	www.ive.es/indexipi.htm
Extremadura	http://estadistica.gobex.es
Galicia	http://www.xunta.es/portada
Comunidad de Madrid	www.madrid.org/iestadis
Región de Murcia	www.carm.es/econet