

## Industrial Production Index (IPI). Base 2005

October 2011. *Provisional data*

### Main results

- The **interannual variation** of the **Industrial Production Index** for the month of **October** is **-4.2%**, almost three points below that registered in September.
- By economic destination of the goods, **all sectors present negative interannual rates**.
- The **average rate** of the IPI stands at **-0.7%** in the first ten months of the year.
- **Twelve Autonomous Communities** register **negative interannual rates** for the IPI in the month of October.

### Annual evolution of industrial production

The Industrial Production Index (IPI) experienced an interannual variation of **-4.2%** in October, almost three points below that registered in September.

The industrial sectors that most influenced this interannual decrease in industrial production in the month of September were:

- **Intermediate goods**, with an annual variation of **-5.8%** and an effect of **-2.042** on the general index, due to the decreases in the majority of activities comprising this sector, with the most important, due to their influence, being those observed in *Manufacture of engines, generators and electric transformers, and of distribution and electric control appliances, Manufacture of cement, lime and plaster and Manufacture of elements made of concrete, cement and plaster*.
- **Energy**, with an annual variation of **-7.6%** and an effect of **-1.106** on the general index due to the negative evolution of all of the activities comprising this sector. Worth noting was the decreases registered in production of *Production, transport and distribution of electrical energy and Petroleum refinement*.

• **Durable consumer goods**, with an annual variation of **-14.0%** and an effect of **-0.462** on the general index, due to the negative evolution of all of its activities. Among these, worth noting was *Manufacture of furniture*.

A more detailed analysis showed the activities that most affected the annual rate of the IPI in the month of October.

**Activities with the greatest negative effect on the annual rate of the general index**

Activity (CNAE 2009 Group)	Annual rate (%)	Effect
Production, transport and distribution of electrical energy	-5.7	-0.518
Petroleum refinement	-10.6	-0.416
Manufacture of elements for construction	-10.1	-0.308
Manufacture of engines, generators and electric transformers, and of distribution and electric control appliances	-27.7	-0.306

**Activities with the greatest positive effect on the annual rate of the general index**

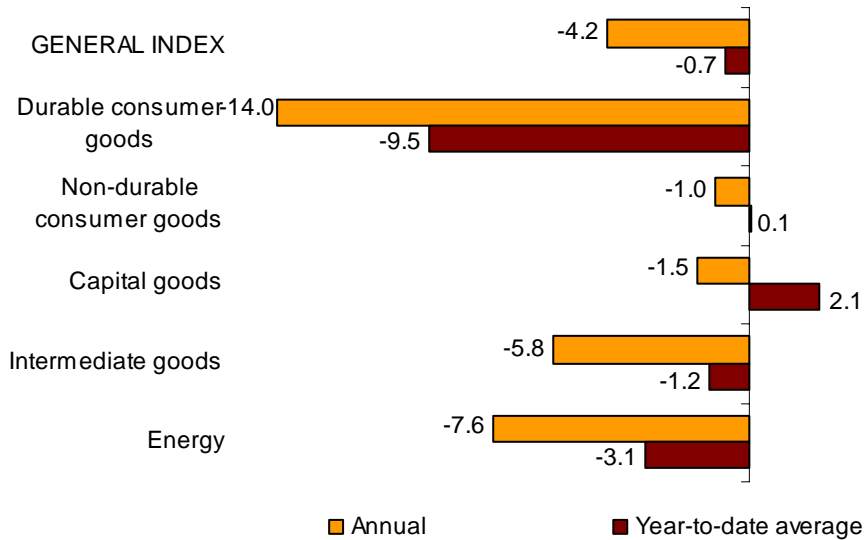
Activity (CNAE 2009 Group)	Annual rate (%)	Effect
Manufacture of other machinery for specific uses	40.0	0.467
Manufacture of cutlery and silverware, tools and hardware	19.1	0.168
Tobacco industry	41.9	0.141
Manufacture of beverages	4.1	0.134

**Year-to-date average rates**

The average for the Industrial Production Index registered a variation of **-0.7%** in the first ten months of the year, as compared with the same period the previous year.

By economic destination of the goods, this rate was positive in Capital goods (2.1%) and Non-durable consumer goods (0.1%). Conversely, it was negative in Intermediate goods (-1.2%), Energy (-3.1%), and Durable consumer goods (-9.5%).

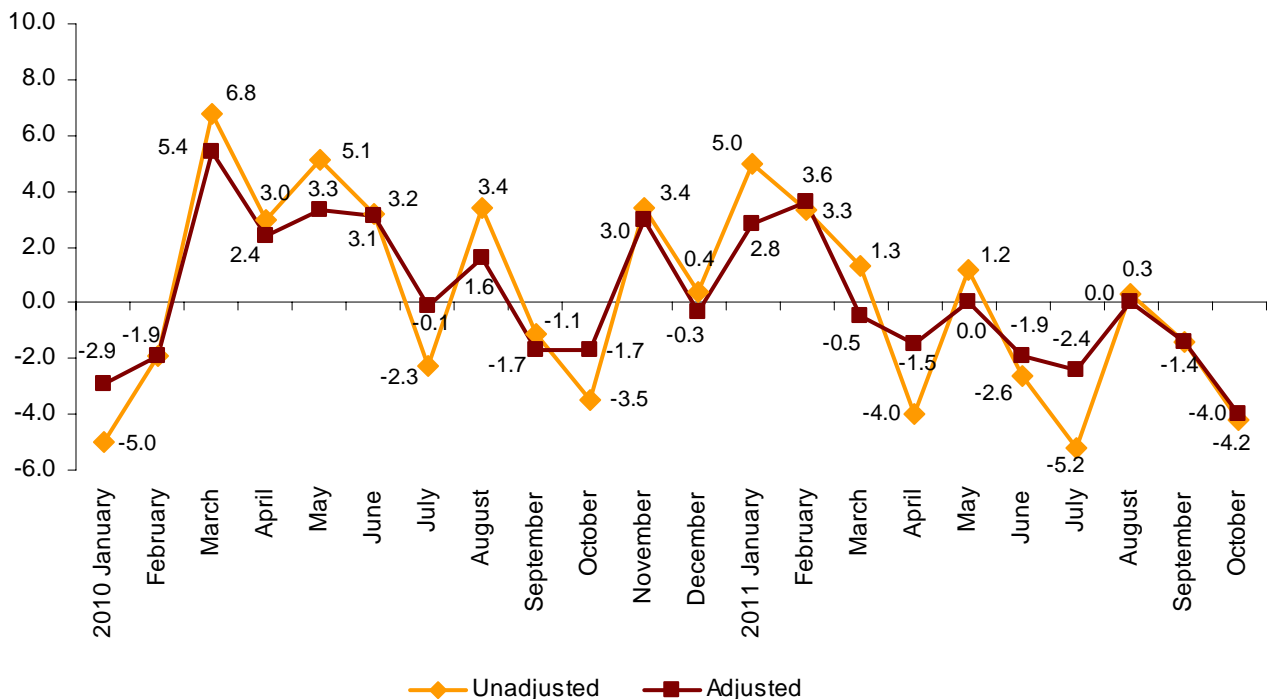
**Annual and average rates of the IPI  
General index and by economic destination**



**Evolution of the IPI, adjusted for the calendar effect**

After correcting the calendar effect, that is, the difference between the number of working days in a given month in different years, the interannual variation of the IPI in the month of October was **-4.0%**, more than two-and-a-half points lower than that registered in September.

**Annual evolution of the IPI  
General index, adjusted and unadjusted**



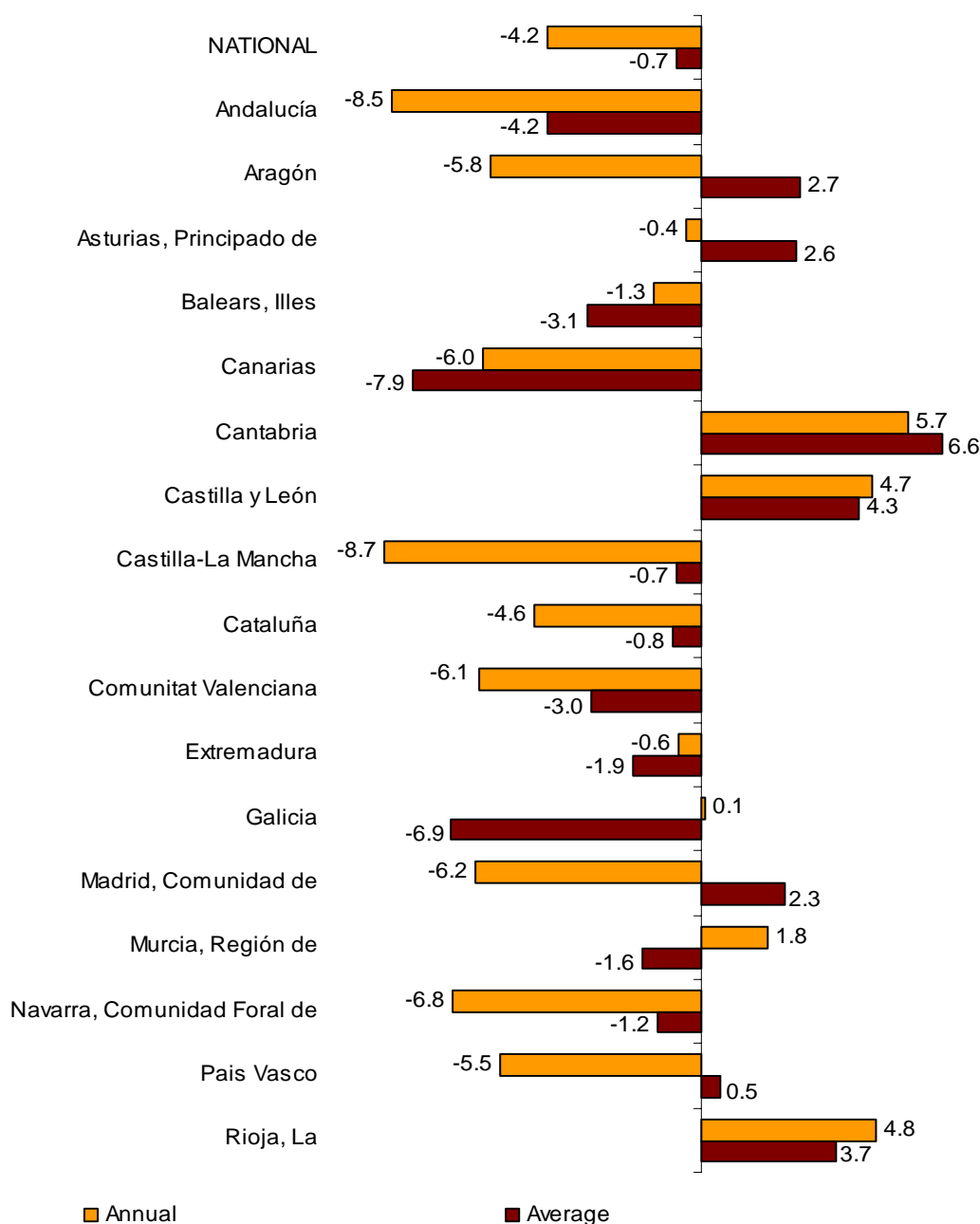
### Results by Autonomous Community

Twelve Autonomous Communities registered negative interannual variations in October. Those that presented the greatest interannual decreases in industrial production were Castilla-La Mancha (-8.7%), Andalucía (-8.5%) and Comunidad Foral de Navarra (-6.8%).

In turn, industrial production in Cantabria (5.7%), La Rioja (4.8%) and Castilla y León (4.7%) registered the greatest increases interannual rates.

### Annual and average rates of the IPI

#### General index by Autonomous Community



# Industrial Production Index. Base 2005

## October 2011

Provisonal data

### 1. Clasification by economic destination of the goods<sup>1</sup>

	Index	% variation	
		Annual	Year-to-date average
GENERAL INDEX	81.3	-4.2	-0.7
Consumer goods	90.0	-2.4	-0.9
Durable consumer goods	54.7	-14.0	-9.5
Non-durable consumer goods	96.5	-1.0	0.1
Capital goods	77.8	-1.5	2.1
Intermediate goods	74.3	-5.8	-1.2
Energy	88.0	-7.6	-3.1

<sup>1</sup> Commission Regulation (EC) n° 656/2007

### 2. Series adjusted for calendar effects

	Index	% variation	
		Annual	Year-to-date average
GENERAL INDEX	83.9	-4.0	-0.6
Consumer goods	93.6	-2.2	-0.7
Durable consumer goods	59.0	-13.6	-9.3
Non-durable consumer goods	100.0	-0.8	0.3
Capital goods	81.0	-1.3	2.3
Intermediate goods	76.7	-5.5	-1.0
Energy	88.7	-7.5	-3.1

### 3. Interannual rates. General index and by economic destination of the goods <sup>1</sup>

Period	General index		Consumer goods		Durable consumer goods		Non-durable consumer goods	
	Original	Adjusted <sup>1</sup>	Original	Adjusted <sup>1</sup>	Original	Adjusted <sup>1</sup>	Original	Adjusted <sup>1</sup>
2010 October	-3.5	-1.7	-3.2	-0.7	-13.1	-9.9	-1.8	0.5
November	3.4	3.0	1.4	0.9	-7.5	-8.2	2.6	2.1
December	0.4	-0.3	0.8	0.0	-10.1	-11.1	2.3	1.4
2011 January	5.0	2.8	3.5	0.9	-5.5	-9.2	4.5	1.9
February	3.3	3.6	0.1	0.3	-9.8	-9.5	1.4	1.5
March	1.3	-0.5	-3.2	-5.3	-10.0	-12.8	-2.5	-4.4
April	-4.0	-1.5	-6.1	-3.0	-15.6	-11.2	-5.1	-2.2
May	1.2	0.0	2.9	1.4	-4.5	-6.6	3.9	2.4
June	-2.6	-1.9	-1.5	-0.7	-15.8	-14.7	0.5	1.2
July	-5.2	-2.4	-4.3	-0.6	-10.0	-4.9	-3.6	0.0
August *	0.3	0.0	3.0	2.5	1.8	1.2	2.9	2.6
September *	-1.4	-1.4	0.7	0.7	-5.6	-5.6	1.4	1.4
October *	-4.2	-4.0	-2.4	-2.2	-14.0	-13.6	-1.0	-0.8

Period	Capital goods		Intermediate goods		Energy	
	Original	Adjusted <sup>1</sup>	Original	Adjusted <sup>1</sup>	Original	Adjusted <sup>1</sup>
2010 October	-8.9	-7.0	-3.3	-1.3	2.9	3.6
November	2.0	1.5	4.1	3.6	8.5	8.4
December	-3.5	-4.1	0.9	0.2	3.7	3.5
2011 January	5.0	2.9	7.1	4.9	3.8	3.2
February	5.1	5.3	6.6	6.7	0.2	0.3
March	3.1	1.1	5.6	3.9	-1.8	-2.7
April	-1.4	1.3	-4.1	-1.4	-3.2	-2.1
May	6.4	5.3	-2.2	-3.5	-1.0	-1.3
June	0.3	1.0	-4.2	-3.6	-5.2	-5.0
July	-1.3	1.6	-6.2	-3.2	-10.2	-9.2
August *	7.3	7.2	-3.4	-3.6	-3.1	-3.2
September *	1.1	1.1	-4.2	-4.1	-2.8	-2.8
October *	-1.5	-1.3	-5.8	-5.5	-7.6	-7.5

<sup>1</sup> Index rates adjusted for calendar effects

\* Data revised

#### 4. General Index and classification by activity (CNAE 2009)

	Index	% variation	
		Annual	Year-to-date average
<b>GENERAL INDEX</b>	81.3	-4.2	-0.7
<b>B. Mining and quarrying</b>	63.1	-18.7	-14.6
Mining of coal and lignite	73.1	-21.2	-35.9
Other mining and quarrying	59.3	-19.5	-8.2
<b>C. Manufacturing</b>	80.8	-3.8	-0.2
Manufacture of food products	101.2	-1.2	-0.1
Manufacture of beverages	89.6	4.1	-2.4
Manufacture of tobacco products	91.1	41.9	-7.1
Manufacture of textiles	63.9	-7.5	-0.7
Manufacture of wearing apparel	46.8	-18.9	-11.9
Manufacture of leather and related products	63.2	1.0	4.7
Wood and cork industry, except furniture, basketmaking and esparto	52.6	-8.4	-4.9
Manufacture of paper and paper products	97.8	-0.2	1.4
Printing and reproduction of recorded media	88.0	-1.3	6.1
Manufacture of coke and refined petroleum products	85.7	-10.6	-0.1
Manufacture of chemicals and chemical products	98.5	-2.5	0.9
Manufacture of basic pharmaceutical products and pharmaceutical preparations	143.1	-5.1	0.6
Manufacture of rubber and plastic products	83.7	-4.2	-0.1
Manufacture of other non-metallic mineral products	50.1	-12.7	-7.2
Manufacture of basic metals	87.6	-2.3	2.1
Manufacture of fabricated metal products, except machinery and equipment	69.7	-2.2	1.3
Manufacture of computer, electronic and optical products	65.6	-23.8	-18.3
Manufacture of electrical equipment	74.6	-11.4	0.0
Manufacture of machinery and equipment n.e.c.	86.0	9.0	7.3
Manufacture of motor vehicles, trailers and semi-trailers	82.1	0.5	6.7
Manufacture of other transport equipment	72.9	-18.6	-13.9
Manufacture of furniture	52.1	-12.0	-7.6
Other manufacturing	86.5	-1.3	0.8
Repair and installation of machinery and equipment	98.2	11.7	-6.5
<b>D. Electricity, gas, steam and air conditioning supply</b>	89.5	-6.0	-2.9

## 5. General index by Autonomous Community

	Index	% variation	
		Annual	Year-to-date average
NATIONAL	81.3	-4.2	-0.7
Andalucía	71.9	-8.5	-4.2
Aragón	81.1	-5.8	2.7
Asturias, Principado de	96.2	-0.4	2.6
Balears, Illes	63.0	-1.3	-3.1
Canarias	75.5	-6.0	-7.9
Cantabria	109.5	5.7	6.6
Castilla y León	83.8	4.7	4.3
Castilla-La Mancha	83.4	-8.7	-0.7
Cataluña	85.2	-4.6	-0.8
Comunitat Valenciana	76.9	-6.1	-3.0
Extremadura	87.2	-0.6	-1.9
Galicia	83.5	0.1	-6.9
Madrid, Comunidad de	83.9	-6.2	2.3
Murcia, Región de	88.5	1.8	-1.6
Navarra, Comunidad Foral de	85.9	-6.8	-1.2
País Vasco	83.5	-5.5	0.5
Rioja, La	93.2	4.8	3.7

More detailed information by Autonomous Community can be obtained at:

Andalucía	<a href="http://www.juntadeandalucia.es/institutodeestadistica">www.juntadeandalucia.es/institutodeestadistica</a>
Aragón	<a href="http://portal.aragon.es/">http://portal.aragon.es/</a>
Principado de Asturias	<a href="http://www.sadei.es">www.sadei.es</a>
Illes Balears	<a href="http://ibestat.caib.es">http://ibestat.caib.es</a>
Canarias	<a href="http://www.gobiernodecanarias.org/istac">www.gobiernodecanarias.org/istac</a>
Cantabria	<a href="http://www.icane.es">www.icane.es</a>
Castilla y León	<a href="http://www.jcyl.es/estadistica">www.jcyl.es/estadistica</a>
Castilla - La Mancha	<a href="http://www.jccm.es/estadistica">www.jccm.es/estadistica</a>
Cataluña	<a href="http://www.idescat.cat">www.idescat.cat</a>
Comunitat Valenciana	<a href="http://www.ive.es/indexipi.htm">www.ive.es/indexipi.htm</a>
Extremadura	<a href="http://www.estadisticaextremadura.com">www.estadisticaextremadura.com</a>
Galicia	<a href="http://www.ige.xunta.es">www.ige.xunta.es</a>
Comunidad de Madrid	<a href="http://www.madrid.org/estadis">www.madrid.org/estadis</a>
Región de Murcia	<a href="http://www.carm.es/econet">www.carm.es/econet</a>

For further information see **INEbase** - [www.ine.es/en/welcome\\_en.htm](http://www.ine.es/en/welcome_en.htm) All press releases at: [www.ine.es/en/prensa/prensa\\_en.htm](http://www.ine.es/en/prensa/prensa_en.htm)

**Press Office:** Telephone numbers: 91 583 93 63 / 94 08 – Fax: 91 583 90 87 - [gprensa@ine.es](mailto:gprensa@ine.es)

**Information Area:** Telephone number: 91 583 91 00 – Fax: 91 583 91 58 – [www.ine.es/infoine/?L=1](http://www.ine.es/infoine/?L=1)