

10 January 2014

Industrial Production Index (IPI). Base 2010 November 2013. Provisional data

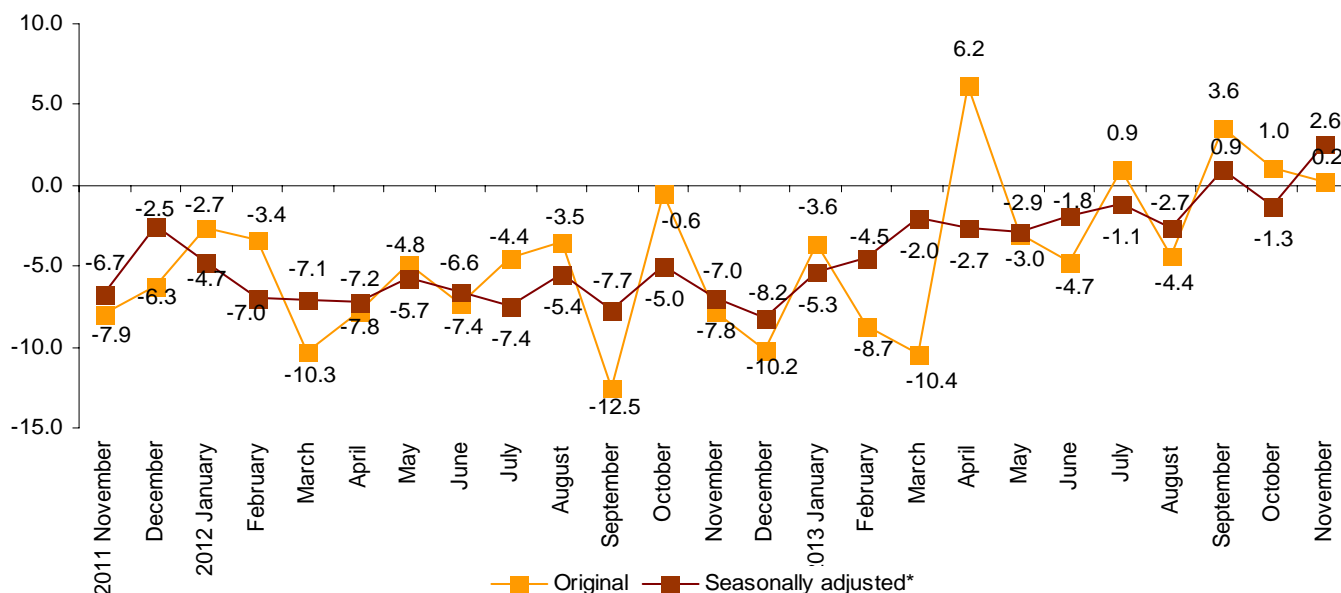
The annual rate of the Industrial Production Index stands at 2.6% in the series adjusted for the seasonal and calendar effects and at 0.2% in the original series

The monthly variation stands at 1.1%, after adjusting the seasonal and calendar effects

The Industrial Production Index (IPI) registered a variation of 0.2% in November, as compared with the same month of 2012. This rate is eight tenths below that registered in October.

After adjusting the seasonal and calendar effects, the annual rate stood at 2.6%, nearly four points above that of October.

General Industrial Production Index Annual rate



*Seasonally adjusted: after adjusting the seasonal and calendar effects.

Annual evolution of the Industrial Production Indices by economic destination of the goods

The industrial sectors of Capital goods (2.7%) and Intermediate goods (0.8%) registered positive rates in November as compared with the same month of 2012. In turn, Durable consumer goods (-11.5%) and Energy (-1.9%) registered negative rates.

After adjusting the seasonal and calendar effects, Capital goods registered the greatest annual increase (5.8%) and Durable consumer goods the greatest decrease (-7.9%).

Annual rates of the Industrial Production Indices: General and by economic destination of the goods

	Original index	Seasonally adjusted index
	Annual rate(%)	Annual rate (%)
GENERAL INDEX	0.2	2.6
1. Consumer goods	-1.0	2.3
1.1. Durable consumer goods	-11.5	-7.9
1.2. Non-durable consumer goods	0.0	1.5
2. Capital goods	2.7	5.8
3. Intermediate goods	0.8	3.2
4. Energy	-1.9	-0.9

A more detailed analysis shows the activities that registered the highest and lowest annual rates in the month of November.

Activities with the highest annual rates of the Industrial Production Indices

Activity (Group from CNAE 2009)	Original index	Annual rate (%)
Manufacture of basic pharmaceutical products	124.4	58.5
Manufacture of vegetable and animal oils and fats	78.5	38.7
Manufacture of electronic components and boards	53.2	32.8
Manufacture of communication equipment	89.7	32.8
Manufacture of refractory products	85.6	27.5

Activities with the lowest annual rates of the Industrial Production Indices

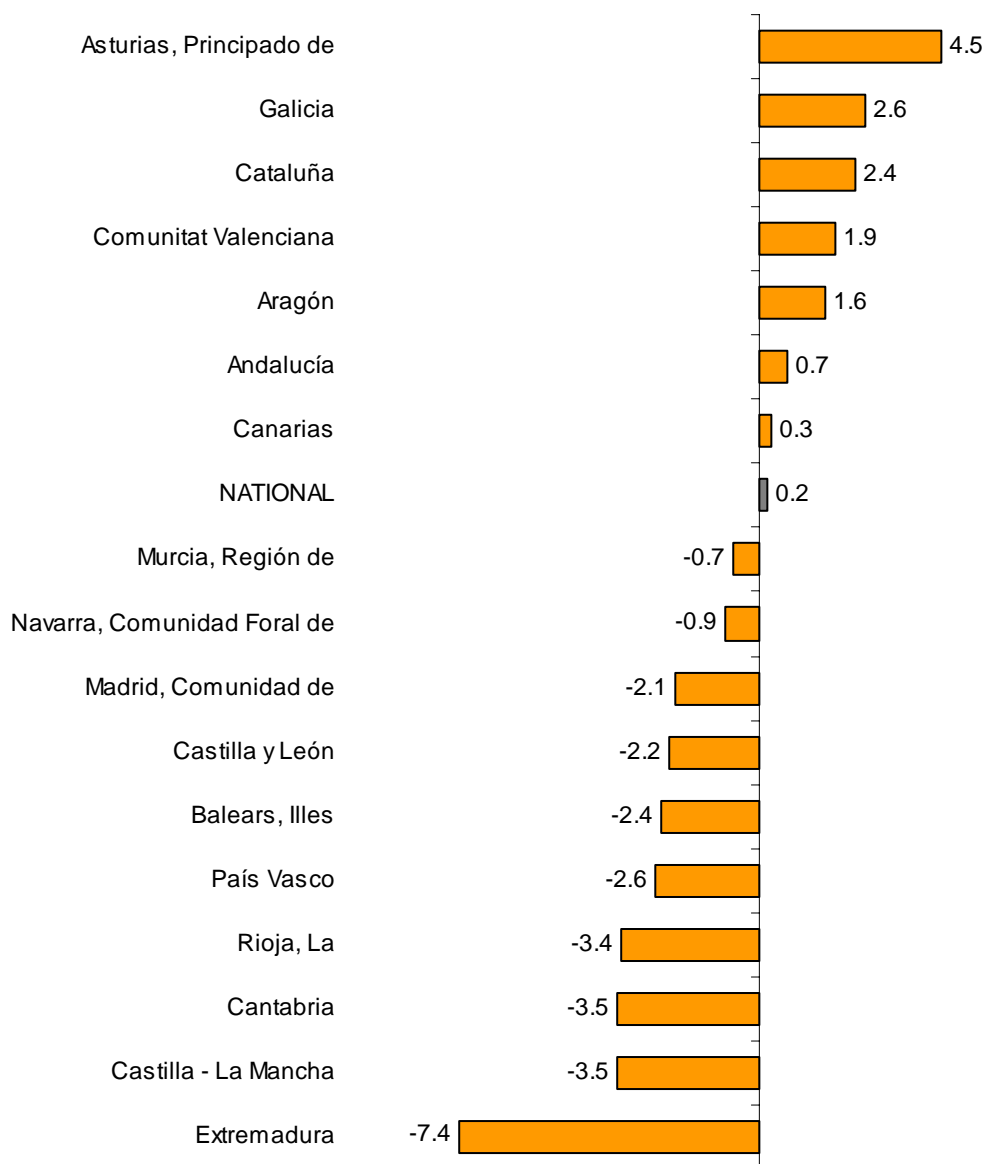
Activity (Group from CNAE 2009)	Original index	Annual rate (%)
Manufacture of computers and peripheral equipment	51.9	-44.2
Manufacture of other porcelain and ceramic products	54.4	-43.9
Manufacture of consumer electronics	25.5	-41.5
Manufacture of agricultural and forestry machinery	79.6	-30.5
Manufacturing n.e.c.	80.8	-26.1

Results by Autonomous Community. Annual variation rate of the Industrial Production

The industrial production increased as compared with the same month of 2012 in seven Autonomous Communities. The greatest increases were registered in Principado de Asturias (4.5%), Galicia (2.6%) and Cataluña (2.4%).

In turn, Extremadura (-7.4%) and Castilla-La Mancha and Cantabria (both with a rate of -3.5%) registered the greatest decreases.

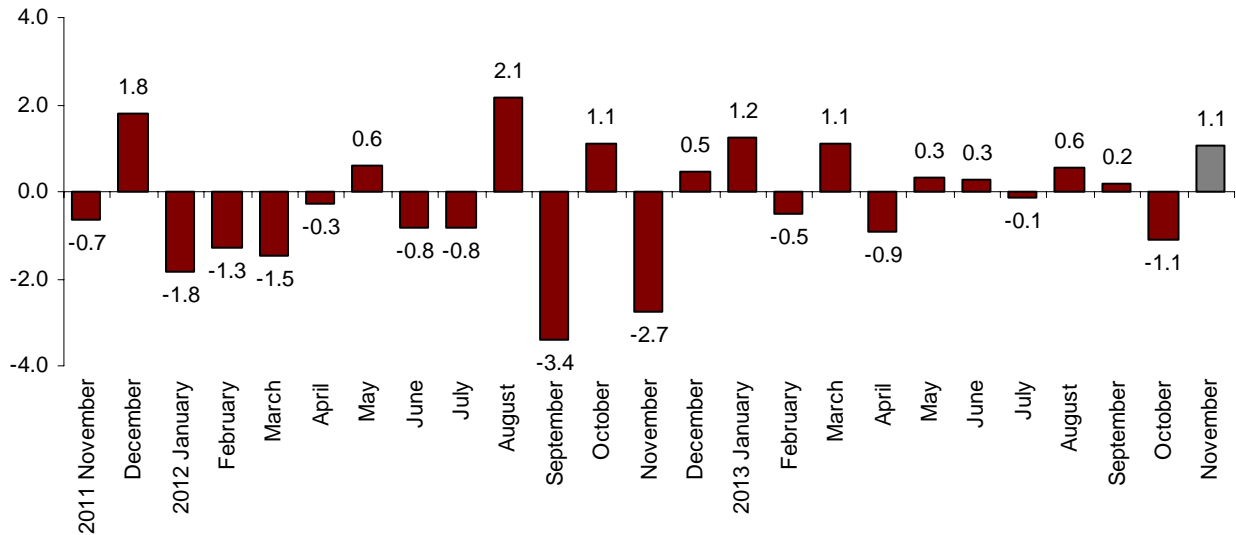
General indices: national and by Autonomous Community Annual rate of the Industrial Production Index



Monthly evolution of the IPI adjusted for the seasonal and calendar effects

The Industrial Production Index variation between October and November, after adjusting the seasonal and calendar effects, was 1.1%. This rate was 2.2 points above that of October.

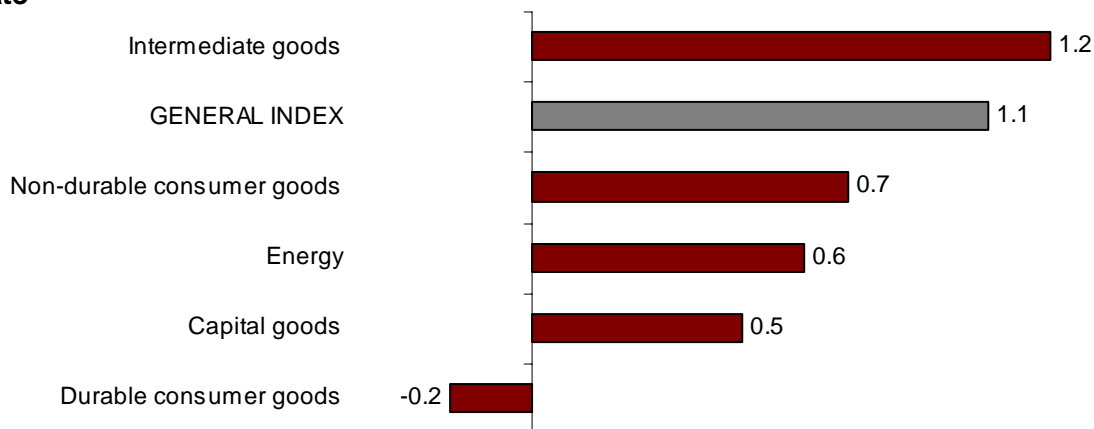
**General Industrial Production Index
Adjusted for seasonal and calendar effects. Monthly rate**



Monthly evolution by destination of the goods

After adjusting the seasonal and calendar effects, all industrial sectors registered positive monthly rates, except Energy (-0.2%). Intermediate goods registered the greatest monthly increase (1.2%).

Industrial Production Indices: General and by economic destination of the goods. Adjusted for seasonal and calendar effects. Monthly rate



Industrial Production Indices. Base 2010 November 2013

Provisional data

1. General index by economic destination of the goods

	Index	Rate (%)		Repercussion
		Annual	Year-to-date average	Annual
GENERAL INDEX	92.1	0.2	-2.2	
1. Consumer goods	94.3	-1.0	-2.7	-0.281
1.1. Durable consumer goods	68.6	-11.5	-12.4	-0.281
1.2. Non-durable consumer goods	97.4	0.0	-1.8	0.000
2. Capital goods	95.8	2.7	0.7	0.584
3. Intermediate goods	88.3	0.8	-3.0	0.244
4. Energy	91.2	-1.9	-3.0	-0.358

2. Industrial Production Indices adjusted for calendar effects

	Index	Rate (%)		
		Monthly	Annual	Year-to-date average
GENERAL INDEX	93.9	-0.1	2.7	-1.8
1. Consumer goods	96.9	1.9	2.5	-2.4
1.1. Durable consumer goods	70.7	-4.3	-8.0	-12.1
1.2. Non-durable consumer goods	99.7	1.6	3.1	-1.5
2. Capital goods	98.1	-0.7	5.9	1.1
3. Intermediate goods	90.0	-1.8	3.3	-2.7
4. Energy	91.6	1.7	-1.1	-2.6

3. Industrial Production Indices adjusted for seasonal and calendar effects

	Index	Rate (%)		
		Monthly	Annual	Year-to-date average
GENERAL INDEX	91.1	1.1	2.6	-1.9
1. Consumer goods	92.4	2.2	2.3	-2.5
1.1. Durable consumer goods	65.9	-0.2	-7.9	-12.1
1.2. Non-durable consumer goods	95.0	0.7	1.5	-1.8
2. Capital goods	91.7	0.5	5.8	0.7
3. Intermediate goods	87.1	1.2	3.2	-2.8
4. Energy	94.7	0.6	-0.9	-2.5

4. General Industrial Production Index adjusted for seasonal and calendar effects

		Rate (%)		
		Annual ¹	Quarterly ²	Monthly ³
2009		-15.6		
2010		0.8		
2011		-1.5		
2012		-6.6		
2013		-1.9		
2011	TIV	-4.5		-2.4
2012	TI	-6.3		-2.2
	TII	-6.5		-1.6
	TIII	-6.9		-0.9
	TIV	-6.7		-2.2
2013	TI	-4.0		0.7
	TII	-2.5		0.0
	TIII	-1.0		0.6
	TIV	0.6		-0.3
2012	NOV	-7.0		-2.7
	DEC	-8.2		0.5
2013	JAN	-5.3		1.2
	FEB	-4.5		-0.5
	MAR	-2.0		1.1
	APR	-2.7		-0.9
	MAY	-2.9		0.3
	JUN	-1.8		0.3
	JUL	-1.1		-0.1
	AUG	-2.7		0.6
	SEP	0.9		0.2
	OCT	-1.3		-1.1
	NOV	2.6		1.1

Note:

¹**Annual rate:** Variation of a period over the same period from the previous year

²**Quarterly rate:** Variation of a quarter compared to the previous quarter. In the current quarter, it is the variation to date this quarter, as compared to the previous quarter

³**Monthly rate:** Variation of a month over the previous month

5. General index by branch of activity (CNAE 2009)

	Index	Rate (%)		Repercussion
		Annual	Year-to-date average	Annual
GENERAL INDEX	92.1	0.2	-2.2	
B. Mining and quarrying industries	57.4	-1.5	-15.3	-0.011
Extraction of anthracite, coal and lignite	59.8	-1.6	-34.5	-0.003
National crude petroleum and natural gas
Extraction of metallic ores
Other mining and quarrying	54.5	-0.9	-11.2	-0.005
C. Manufacturing industry	92.7	0.4	-1.8	0.311
Food Industry	97.7	-1.6	-1.6	-0.214
Manufacture of beverages.	98.6	-11.0	-3.4	-0.464
Tobacco industry.	95.9	-9.0	-3.4	-0.031
Textile industry	95.8	0.8	0.8	0.009
Manufacture of garments	87.6	15.7	4.2	0.171
Leather and footwear industry	79.1	3.0	-3.7	0.019
Manufacture of wood and of products of wood and cork, except furniture; basketm	86.8	-0.8	-3.8	-0.012
Manufacture of paper and paper-products	100.2	-0.9	-1.2	-0.025
Graphic arts and reproduction of recorded media	81.5	-3.7	-10.6	-0.078
Manufacture of coke and refined petroleum products	90.4	-12.3	-0.1	-0.241
Chemical Industry	89.3	2.3	-1.3	0.131
Manufacture of pharmaceutical products	116.5	12.5	2.3	0.459
Rubber and plastic material transformation industry	91.6	4.7	1.0	0.190
Manufacture of other non-metallic ore products	71.6	0.1	-8.2	0.003
Metallurgy; manufacture of iron, steel and ferro-alloy products	94.9	7.4	-2.4	0.267
Manufacture of metal products, except machinery and equipment	81.9	-2.5	-1.9	-0.197
Manufacture of computers, electronic and optical products	76.3	6.3	-6.7	0.070
Manufacture of electrical material and equipment	90.1	-2.2	-5.0	-0.072
Manufacture of machinery and equipment n.e.c.	114.9	0.0	-0.1	0.000
Manufacture of motor vehicles, trailers and semi-trailers	109.4	8.6	6.2	0.610
Manufacture of other transport equipment	86.8	0.5	-9.5	0.012
Manufacture of furniture.	66.7	-9.8	-14.4	-0.147
Other manufacturing industries	104.5	-6.4	7.1	-0.086
Repair and installation of machinery and equipment	81.0	-3.0	-5.6	-0.064
D. Supply of electrical energy, gas, steam and air conditioning	92.6	-1.0	-4.4	-0.146
E. Water supply, activities, waste management and decontamination*	86.3	1.5	3.4	0.034

* It only includes Water collection, treatment and supply

(..) Data not available due to statistical secrecy.

6. General Industrial Production Indices: national and by Autonomous Community

	Index	Rate (%)		
		Monthly	Annual	Year-to-date average
NATIONAL	92.1	-5.5	0.2	-2.2
Andalucía	85.8	-2.9	0.7	-6.8
Aragón	94.4	-0.7	1.6	-2.7
Asturias, Principado de	91.9	-11.1	4.5	-3.0
Balears, Illes	74.1	-9.7	-2.4	-6.4
Canarias	97.0	-1.8	0.3	-4.7
Cantabria	92.1	-8.3	-3.5	-3.6
Castilla y León	96.1	0.5	-2.2	-7.4
Castilla-La Mancha	89.6	-7.5	-3.5	-2.6
Cataluña	96.2	-8.5	2.4	0.6
Comunitat Valenciana	95.4	-4.7	1.9	1.7
Extremadura	72.3	-12.0	-7.4	-3.2
Galicia	90.3	-3.6	2.6	3.3
Madrid, Comunidad de	85.7	-3.9	-2.1	-3.1
Murcia, Región de	87.1	-6.7	-0.7	-4.0
Navarra, Comunidad Foral de	92.6	-8.2	-0.9	-1.5
País Vasco	95.0	-5.1	-2.6	-4.0
Rioja, La	94.5	-4.2	-3.4	-5.2

More detailed information by Autonomous Community may be obtained at:

Andalucía	www.juntadeandalucia.es/institutodeestadistica
Aragón	www.aragon.es/iaest/jpi
Principado de Asturias	www.sadei.es
Illes Balears	www.ibestat.caib.es
Canarias	www.gobiernodecanarias.org/istac
Cantabria	www.icane.es
Castilla y León	www.jcyl.es/estadistica
Castilla - La Mancha	www.jccm.es/estadistica
Cataluña	www.idescat.cat
Comunitat Valenciana	www.ive.es
Extremadura	http://estadistica.gobex.es
Galicia	www.ige.xunta.es
Comunidad de Madrid	www.madrid.org/iestadis
Región de Murcia	www.carm.es/econet
La Rioja	www.larioja.org

For further information see **INEbase** - www.ine.es/en/

All press releases at: www.ine.es/en/prensa/prensa_en.htm

Press Office: Telephone numbers: 91 583 93 63 / 94 08 – Fax: 91 583 90 87 - gprensa@ine.es

Information Area: Telephone number: 91 583 91 00 – Fax: 91 583 91 58 – www.ine.es/infoine/?L=1