

25 February 2015

**Industrial Price Index (IPRI). Base 2010**  
January 2015. *Provisional data*

**The annual variation rate of the Industrial Price Index stands at –2.8%, eight tenths over that registered in December**

**The monthly variation rate of industrial prices is –0.5%**

**Annual evolution of industrial prices**

The annual rate of the General Industrial Price Index (IPRI) stood at **–2.8%** in January, eight tenths higher than that registered in December.

By economic destination of the goods, the industrial sectors that influenced the most this increase were:

- **Energy**, whose annual rate was **–10.4%**, three points higher than that registered in the previous month. This behaviour was due to the increase in the prices of *Electric power generation, transmission and distribution*, as compared with the decrease registered in January 2014. The annual rate of this activity increased by almost 12 points, reaching **–0.6%**.

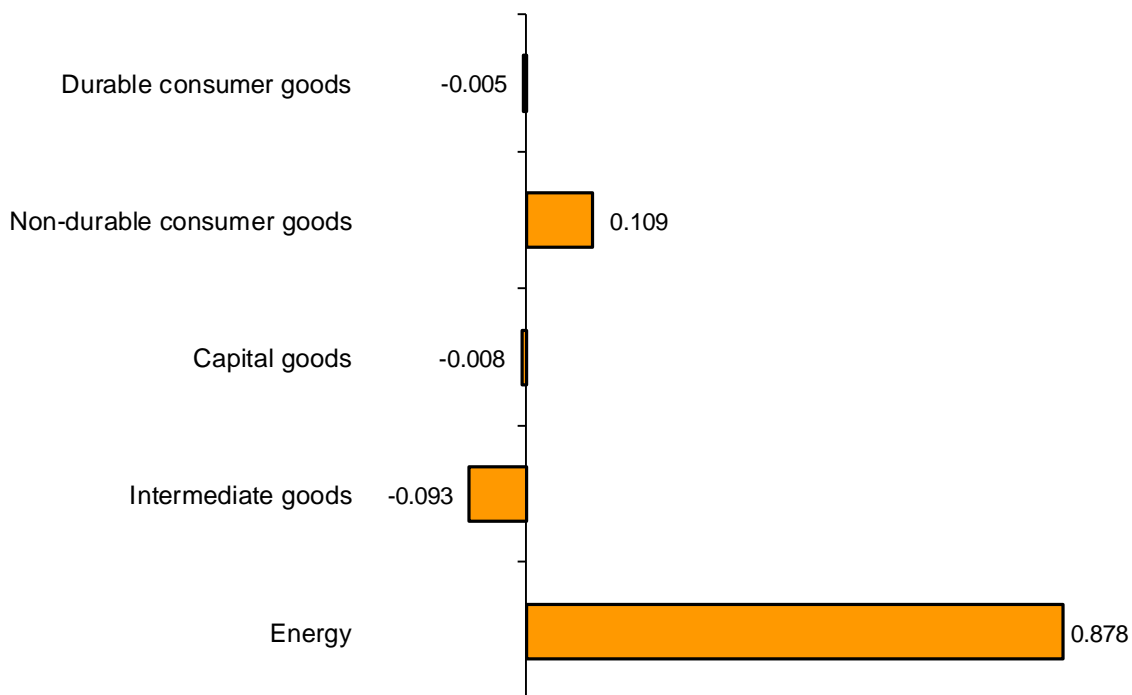
Within this sector, it was also worth noting the decrease in the prices of *Manufacture of refined petroleum products*, whose annual rate decreased by eight points and a half and stood at **–34.2%**, its lowest rate since September 2009.

- **Non-durable consumer goods**, whose variation increased four tenths, standing at **0.8%**. This was mainly due to increase in the prices of *Manufacture of vegetable and animal oils and fats*, as compared to the decrease registered last year.

Despite the increase in the general IPRI, it was worth noting the decrease in the rate of the sector:

- **Intermediate goods**, whose variation decreased three tenths, standing at **–1.1%**. Worth noting in this behaviour was the decrease in the prices of *Manufacture of basic chemicals, fertilisers and nitrogen compounds, plastics and synthetic rubber in primary forms* and, to a lesser extent, of *Manufacture of basic iron and steel and of ferro-alloys and Forging, pressing, stamping and roll-forming of metal; powder metallurgy*, as compared to the increases registered in 2014.

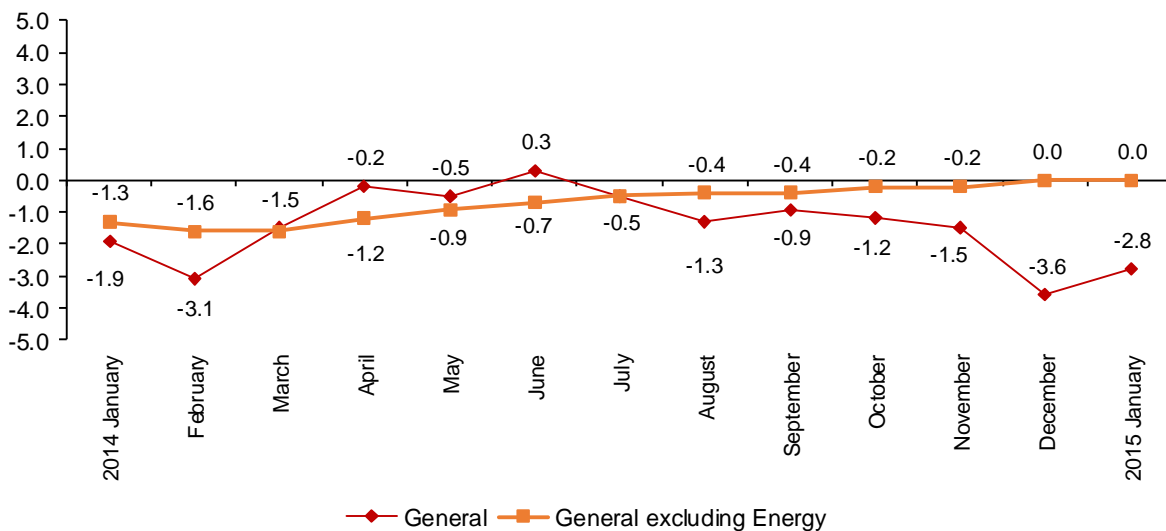
**Contribution of the industrial sectors in the annual rate of the IPRI**



**DIFFERENCE ANNUAL RATE GENERAL IPRI 0.8**

The annual variation rate of the **general index excluding Energy** stood at **0.0%**, thus standing more than two points and a half over that of the general IPRI.

**Annual evolution of the IPRI  
General index and general index excluding Energy**



## Monthly evolution of industrial prices

In January, the monthly variation of the general IPRI was **-0.5%**.

By economic destination of the goods, among the industrial sectors with a monthly negative effect on the general index, worth noting:

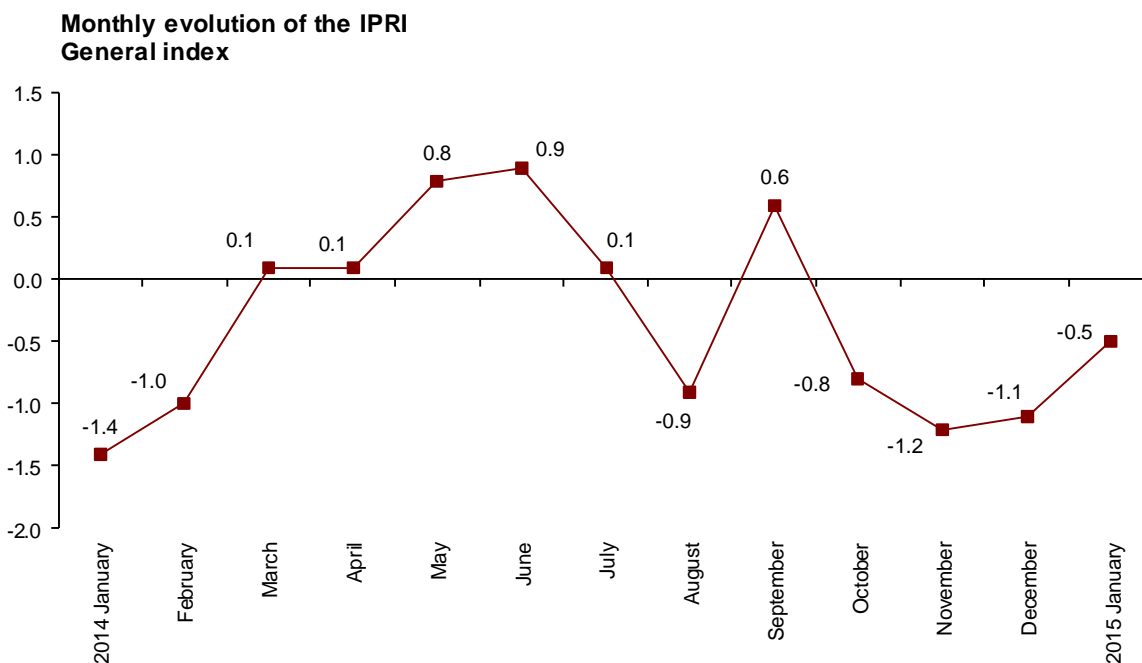
- **Energy**, whose monthly variation of **-2.0%** was due to the decrease in the prices of *Manufacture of refined petroleum products* and, to a lesser extent, of *Manufacture of gas; distribution of gaseous fuels through mains*. Its effect to the general index was **-0.532**.

- **Intermediate goods**, with a rate of **-0.1%** and an effect of **-0.045**. Worth noting in this behaviour was the decrease in the prices of *Manufacture of basic chemicals, fertilisers and nitrogen compounds, plastics and synthetic rubber in primary forms*.

Among the sectors with a positive effect on the monthly rate of the general index, worth noting were:

- **Non-durable consumer goods**, whose rate of **0.3%** had a contribution of **0.077** to the general index. This was mainly due to the increase in the prices of *Manufacture of vegetable and animal oils and fats*.

- **Capital goods**, whose rate stood at **0.2%**. Worth noting in this behavior was the increase in the prices of *Manufacture of structural metal products* and *Manufacture of railway locomotives and rolling stock*. It had a contribution of **0.026** to the IPRI.



A more detailed analysis showed the activities that most affected the monthly rate of the IPRI in the month of January.

**Activities with the greatest positive contribution to the IPRI monthly rate**

	Monthly rate (%)	Contribution
CNAE-09 Group		
Electric power generation, transmission and distribution	3.6	0.481
Manufacture of vegetable and animal oils and fats	3.0	0.054
Manufacture of animal feed products	0.9	0.020
Manufacture of electric motors, generators, transformers and electricity distribution and control apparatus	1.1	0.016
Processing and preserving of fish, crustaceans and molluscs	1.4	0.013
Graphic arts and related services	0.7	0.013
Processing and preserving of fruit and vegetables	0.8	0.011

**Activities with the greatest negative contribution to the IPRI monthly rate**

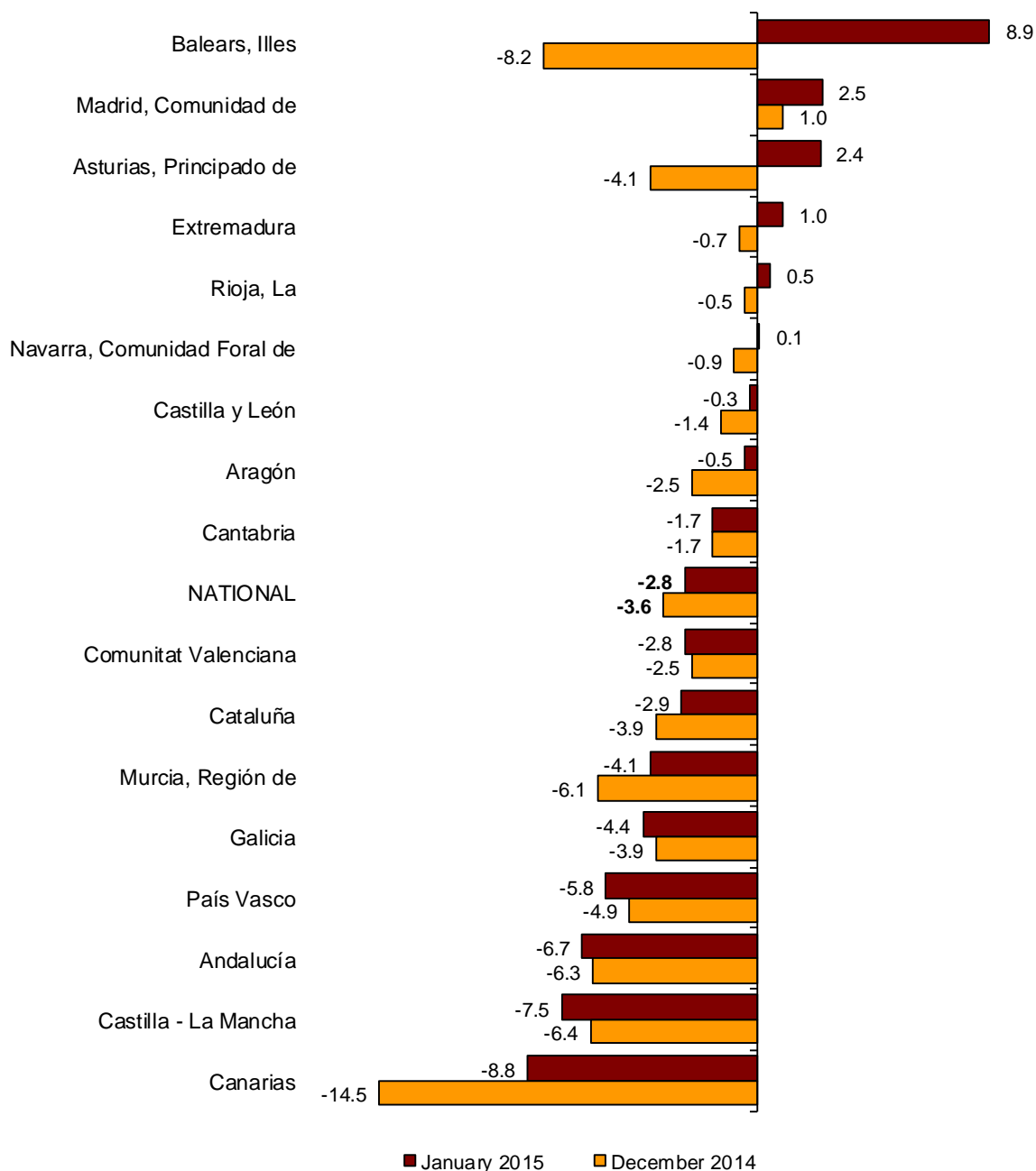
	Monthly rate (%)	Contribution
CNAE-09 Group		
Manufacture of refined petroleum products	-12.5	-0.952
Manufacture of gas; distribution of gaseous fuels through mains	-1.6	-0.062
Manufacture of basic chemicals, fertilisers and nitrogen compounds, plastics and synthetic rubber in primary forms	-1.9	-0.056
Manufacture of basic precious and other non-ferrous metals	-1.4	-0.018
Manufacture of dairy products	-0.8	-0.018
Manufacture of basic iron and steel and of ferro-alloys	-0.9	-0.015
Manufacture of plastic products	-0.5	-0.012

**Results by Autonomous Community. Annual variation rates**

The annual rate of the IPRI increased in 11 Autonomous Communities. Among them, worth noting were Illes Balears (8.9%), Principado de Asturias (2.4%) and Canarias (-8.8%), which registered increases of 17.1, 6.5 and 5.7 points, respectively.

In turn, among the Autonomous Communities to decrease their annual rate worth noting was Castilla-La Mancha, with a decrease of 1.1 points, down to -7.5%.

**Annual variation rates. IPRI**  
Index by Autonomous Communities



## Industrial Prices Index. Base 2010 January 2015

Provisional data

### 1. National indices: general and by economic destination of the goods

	Index	% variation			Effect	
		Over previous month	Over last December	Over one year	Over previous month	Over last December
General index	107.4	-0.5	-0.5	-2.8		
Consumer goods	107.6	0.3	0.3	0.7	0.076	0.076
- Durable consumer goods	102.7	0.0	0.0	0.6	-0.001	-0.001
- Non-durable consumer goods	108.3	0.3	0.3	0.8	0.077	0.077
Capital goods	102.0	0.2	0.2	0.6	0.026	0.026
Intermediate goods	105.8	-0.1	-0.1	-1.1	-0.045	-0.045
Energy	111.4	-2.0	-2.0	-10.4	-0.532	-0.532

### 2. Variation rates in the last 12 months. General Index

Period	Index	% variation		
		Over previous month	Over last December	Over one year
2014 January	110.5	-1.4	-1.4	-1.9
February	109.4	-1.0	-2.3	-3.1
March	109.5	0.1	-2.2	-1.5
April	109.7	0.1	-2.1	-0.2
May	110.6	0.8	-1.2	-0.5
June	111.5	0.9	-0.4	0.3
July	111.6	0.1	-0.4	-0.5
August	110.6	-0.9	-1.2	-1.3
September	111.3	0.6	-0.7	-0.9
October	110.3	-0.8	-1.5	-1.2
November	109.1	-1.2	-2.6	-1.5
December *	107.9	-1.1	-3.6	-3.6
2015 January	107.4	-0.5	-0.5	-2.8

\* Revised data

### 3. Total industry and classification by activity (CNAE 2009)

	Index	Over previous month		Over last December		Over one year
		% Variation	Effect	% Variation	Effect	% Variation
<b>TOTAL INDUSTRY</b>	107.4	-0.5		-0.5		-2.8
<b>B. Mining and quarrying</b>	102.8	0.4	0.004	0.4	0.004	0.0
Mining of coal and lignite	108.1	-1.6	-0.002	-1.6	-0.002	0.3
Mining of metal ores	86.8	-3.5	-0.002	-3.5	-0.002	-7.1
Other mining and quarrying	102.9	1.1	0.008	1.1	0.008	0.4
<b>C. Manufacturing</b>	104.1	-1.1	-0.901	-1.1	-0.901	-3.7
Manufacture of food products	112.0	0.4	0.078	0.4	0.078	0.3
Manufacture of beverages	108.4	0.1	0.005	0.1	0.005	-0.3
Manufacture of tobacco products	120.1	1.5	0.003	1.5	0.003	2.9
Manufacture of textiles	105.6	-0.1	-0.001	-0.1	-0.001	-0.4
Manufacture of wearing apparel	98.8	-0.2	-0.003	-0.2	-0.003	0.9
Manufacture of leather and related products	106.5	-0.1	-0.001	-0.1	-0.001	0.5
Manufacture of wood and of products of wood and cork, except furniture; manufacture of articles of straw and plaiting materials	104.8	0.3	0.004	0.3	0.004	0.9
Manufacture of paper and paper products	104.5	0.2	0.005	0.2	0.005	-0.4
Printing and reproduction of recorded media	107.2	0.7	0.012	0.7	0.012	1.4
Manufacture of coke and refined petroleum products	84.5	-12.5	-0.952	-12.5	-0.952	-34.2
Manufacture of chemicals and chemical products	108.9	-1.0	-0.059	-1.0	-0.059	-3.1
Manufacture of basic pharmaceutical products	100.1	0.0	0.000	0.0	0.000	1.1
Manufacture of rubber and plastic products	108.0	-0.3	-0.009	-0.3	-0.009	-0.5
Manufacture of other non-metallic mineral products	102.4	0.3	0.014	0.3	0.014	0.4
Manufacture of basic metals	101.0	-1.0	-0.037	-1.0	-0.037	0.1
Manufacture of fabricated metal products, except machinery and equipment	101.6	0.1	0.006	0.1	0.006	-0.1
Manufacture of computer, electronic and optical products	86.8	-0.3	-0.003	-0.3	-0.003	-3.3
Manufacture of electrical equipment	106.0	0.4	0.012	0.4	0.012	0.4
Manufacture of machinery and equipment n.e.c.	103.4	0.2	0.006	0.2	0.006	0.9
Manufacture of motor vehicles, trailers and semi-trailers	101.1	0.0	-0.001	0.0	-0.001	-0.1
Manufacture of other transport equipment	101.6	0.4	0.007	0.4	0.007	1.7
Manufacture of furniture	103.7	0.1	0.002	0.1	0.002	0.8
Other manufacturing	105.2	0.4	0.003	0.4	0.003	0.7
Repair and installation of machinery and equipment	100.9	0.4	0.006	0.4	0.006	-0.4
<b>D. Electricity and gas</b>	124.0	2.4	0.419	2.4	0.419	1.2
<b>E. Water supply</b>	116.2	0.3	0.004	0.3	0.004	1.8

(Continues)

#### 4. Indices of Autonomous Communities: general and by economic destination

	Index	% variation			Index	% variation		
		Over previous month	Over last December	Over one year		Over previous month	Over last December	Over one year
<b>Andalucía</b>				<b>Aragón</b>				
General index	107.2	-2.3	-2.3	-6.7	107.4	0.7	0.7	-0.5
Consumer goods	115.2	1.2	1.2	7.2	102.6	-0.1	-0.1	-0.4
- Durable consumer goods	105.0	0.6	0.6	0.7	101.1	-0.1	-0.1	1.5
- Non-durable consumer goods	115.9	1.2	1.2	7.6	103.3	-0.1	-0.1	-1.2
Capital goods	102.6	0.5	0.5	0.8	104.7	0.0	0.0	1.0
Intermediate goods	106.2	-1.0	-1.0	-4.5	109.1	0.4	0.4	-1.3
Energy	100.2	-7.1	-7.1	-21.9	117.0	4.1	4.1	-2.9
<b>Asturias, Principado de</b>				<b>Balears, Illes</b>				
General index	107.3	1.9	1.9	2.4	118.1	3.4	3.4	8.9
Consumer goods	102.8	-0.8	-0.8	-1.6	106.2	0.0	0.0	-0.6
- Durable consumer goods	104.2	0.0	0.0	0.5	110.9	0.3	0.3	1.8
- Non-durable consumer goods	103.0	-0.8	-0.8	-1.7	105.4	-0.1	-0.1	-0.9
Capital goods	95.9	0.2	0.2	0.5	100.5	0.1	0.1	0.1
Intermediate goods	99.4	0.7	0.7	1.1	109.0	0.7	0.7	-0.6
Energy	124.5	5.0	5.0	6.4	129.7	6.0	6.0	17.9
<b>Canarias</b>				<b>Cantabria</b>				
General index	109.7	-1.7	-1.7	-8.8	106.2	-0.7	-0.7	-1.7
Consumer goods	106.9	0.5	0.5	0.1	103.8	-1.4	-1.4	-0.9
- Durable consumer goods	100.0	0.1	0.1	0.8	99.4	-2.5	-2.5	-2.2
- Non-durable consumer goods	107.0	0.5	0.5	0.1	104.9	-1.1	-1.1	-0.6
Capital goods	97.7	0.0	0.0	-0.6	99.2	0.0	0.0	-0.3
Intermediate goods	112.3	0.3	0.3	-1.2	106.5	-1.8	-1.8	-2.5
Energy	114.6	-2.6	-2.6	-12.4	118.4	3.4	3.4	-3.8
<b>Castilla y León</b>				<b>Castilla-La Mancha</b>				
General index	105.9	0.4	0.4	-0.3	104.4	-2.0	-2.0	-7.5
Consumer goods	107.3	-0.1	-0.1	-1.1	111.0	-0.1	-0.1	0.2
- Durable consumer goods	104.5	-0.6	-0.6	1.4	103.6	0.1	0.1	0.1
- Non-durable consumer goods	107.4	-0.1	-0.1	-1.2	111.4	-0.1	-0.1	0.2
Capital goods	101.4	0.2	0.2	0.0	102.7	-1.2	-1.2	0.1
Intermediate goods	104.9	0.5	0.5	0.1	106.5	-0.1	-0.1	-0.7
Energy	118.1	2.9	2.9	0.6	96.1	-6.4	-6.4	-23.8
<b>Cataluña</b>				<b>Comunitat Valenciana</b>				
General index	106.5	-0.2	-0.2	-2.9	102.4	-0.6	-0.6	-2.8
Consumer goods	106.9	0.1	0.1	0.2	104.5	-0.1	-0.1	-0.6
- Durable consumer goods	102.7	0.0	0.0	1.6	105.5	0.3	0.3	0.6
- Non-durable consumer goods	107.9	0.1	0.1	0.1	104.3	-0.1	-0.1	-0.7
Capital goods	101.3	0.2	0.2	0.4	101.3	0.6	0.6	0.7
Intermediate goods	107.7	-0.7	-0.7	-2.1	101.4	-0.1	-0.1	-0.5
Energy	110.5	-0.3	-0.3	-10.5	102.5	-4.4	-4.4	-17.5



(Conclusion)

#### 4. Indices of Autonomous Communities: general and by economic destination

	Index	% variation			Index	% variation		
		Over previous month	Over last December	Over one year		Over previous month	Over last December	Over one year
<b>Extremadura</b>				<b>Galicia</b>				
General index	108.0	0.4	0.4	1.0	102.8	-0.7	-0.7	-4.4
Consumer goods	104.4	0.3	0.3	0.8	104.1	0.9	0.9	0.1
- Durable consumer goods	101.8	-1.1	-1.1	0.0	98.1	-0.9	-0.9	-0.7
- Non-durable consumer goods	104.5	0.4	0.4	0.9	104.3	1.0	1.0	0.1
Capital goods	97.8	-0.7	-0.7	0.7	103.0	0.2	0.2	-0.1
Intermediate goods	110.9	-0.1	-0.1	0.0	104.6	0.3	0.3	0.4
Energy	125.1	2.8	2.8	5.6	97.0	-6.0	-6.0	-22.5
<b>Madrid, Comunidad de</b>				<b>Murcia, Región de</b>				
General index	117.1	0.4	0.4	2.5	107.5	-0.5	-0.5	-4.1
Consumer goods	104.2	0.4	0.4	1.5	111.1	0.5	0.5	-1.4
- Durable consumer goods	106.3	0.8	0.8	1.2	106.3	0.2	0.2	0.7
- Non-durable consumer goods	104.0	0.3	0.3	1.5	111.8	0.5	0.5	-1.7
Capital goods	102.0	0.2	0.2	0.6	107.3	0.2	0.2	1.8
Intermediate goods	107.1	0.3	0.3	0.5	105.1	-0.1	-0.1	0.8
Energy	128.5	0.5	0.5	4.3	107.8	-2.1	-2.1	-13.2
<b>Navarra, C. Foral de</b>				<b>País Vasco</b>				
General index	105.6	0.1	0.1	0.1	107.0	-1.5	-1.5	-5.8
Consumer goods	108.3	0.1	0.1	0.0	107.5	0.2	0.2	-0.9
- Durable consumer goods	100.4	-0.4	-0.4	-0.4	99.9	-0.4	-0.4	-0.7
- Non-durable consumer goods	109.0	0.1	0.1	0.0	111.5	0.4	0.4	-0.9
Capital goods	100.2	-0.8	-0.8	-1.1	104.7	0.5	0.5	2.5
Intermediate goods	104.4	0.2	0.2	-0.3	106.8	0.0	0.0	-1.0
Energy	129.1	3.5	3.5	7.8	102.0	-5.4	-5.4	-18.6
<b>Rioja, La</b>								
General index	108.5	0.8	0.8	0.5				
Consumer goods	110.1	0.9	0.9	1.0				
- Durable consumer goods	98.9	0.0	0.0	-1.6				
- Non-durable consumer goods	110.9	0.9	0.9	1.2				
Capital goods	100.0	-0.2	-0.2	0.4				
Intermediate goods	109.5	0.5	0.5	0.1				
Energy	111.5	1.3	1.3	-1.0				

For further information see INEbase - [www.ine.es/en/](http://www.ine.es/en/) All press releases at: [www.ine.es/en/prensa/prensa\\_en.htm](http://www.ine.es/en/prensa/prensa_en.htm)

**Press Office:** Telephone numbers: 91 583 93 63 / 94 08 – Fax: 91 583 90 87 - [gprensa@ine.es](mailto:gprensa@ine.es)

**Information Area:** Telephone number: 91 583 91 00 – Fax: 91 583 91 58 – [www.ine.es/infoine](http://www.ine.es/infoine)