

25 February 2016

Industrial Price Index. Base 2010
January 2016. *Provisional data*

The annual Industrial Price Index stands at –4.2%, two points below that of December

The monthly variation of industrial prices is –2.5%

Annual evolution of industrial prices

The annual rate for the general Industrial Price Index (IPRI) in January was **-4.2%**, two points below that registered in December.

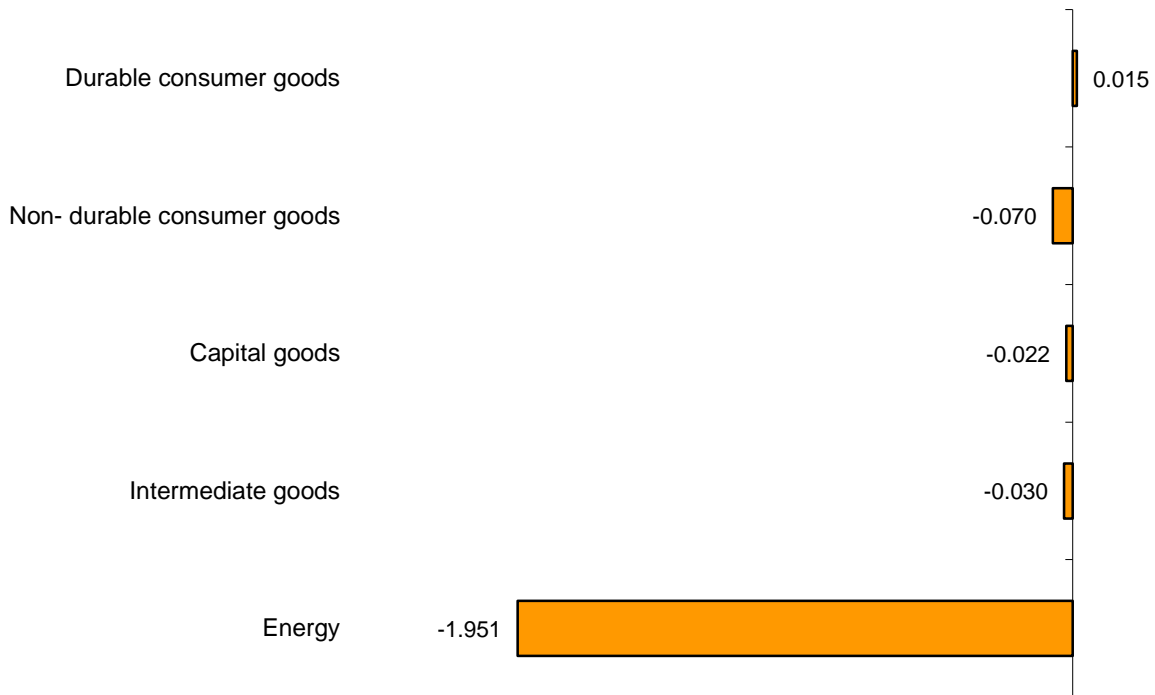
By economic destination of the goods, the industrial sectors of most influence in this fall were:

- **Energy**, with a rate falling by more than seven points to **-15.1%**, the lowest since July 2009. This evolution is the result of the decrease in the cost of the *Production, transport and distribution of electric power* in contrast to the increase in January 2015.
- **Non-durable consumer goods**, which falls by three tenths in its annual variation to **0.4%** mainly because the cost of *Drinks manufacture* and the *Manufacture of vegetable and animal oils and fats* has risen less this year than last.

The only industrial sector in which the annual rate increased was:

- **Durable consumer goods**, with a year-on-year variation of **1.0%**, seven tenths more than that registered in December. Of particular note in this behaviour was the rise in prices of the *Manufacture of household electrical appliances*, which had dropped in 2015.

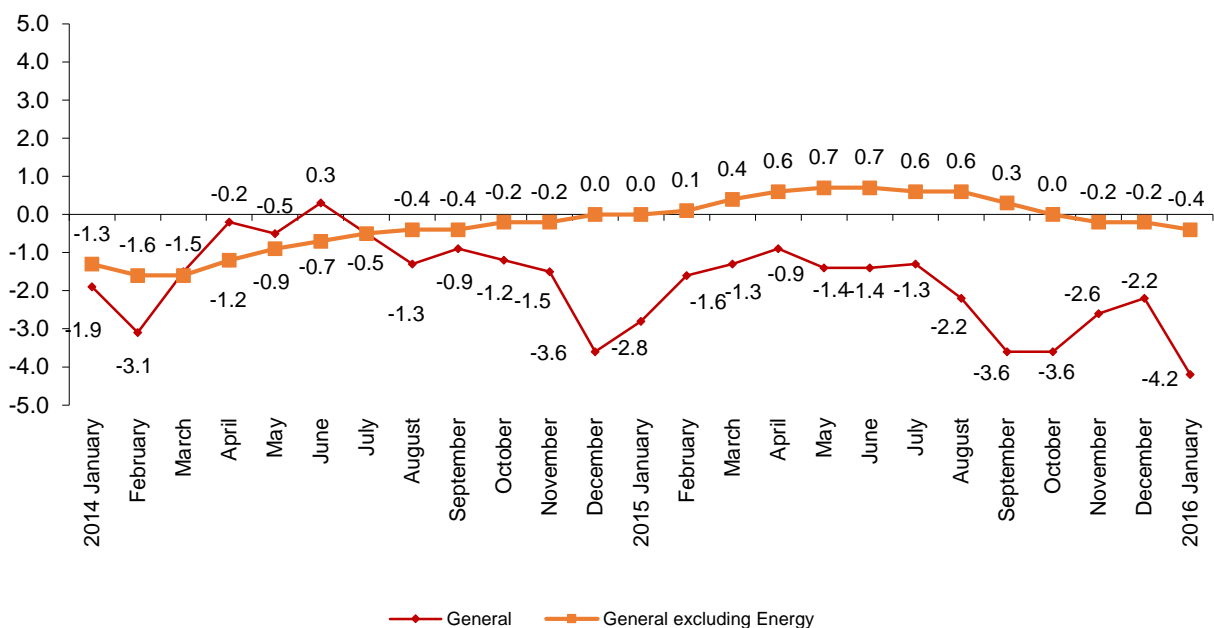
Influence of industrial sectors in the IPRI annual rate



DIFFERENCE IN THE GENERAL IPRI ANNUAL RATE

The annual variation of the **general index without Energy** was a drop of two tenths to **-0.4%**, which increases its difference with respect to that of the general IPRI, leaving it almost four points higher.

IPRI annual evolution General index and general excluding Energy



Monthly evolution of industrial prices

In January, the monthly change of the overall IPRI was **-2.5%**.

By economic destination of the goods, the industrial sectors that presented a negative monthly effect on the general index were:

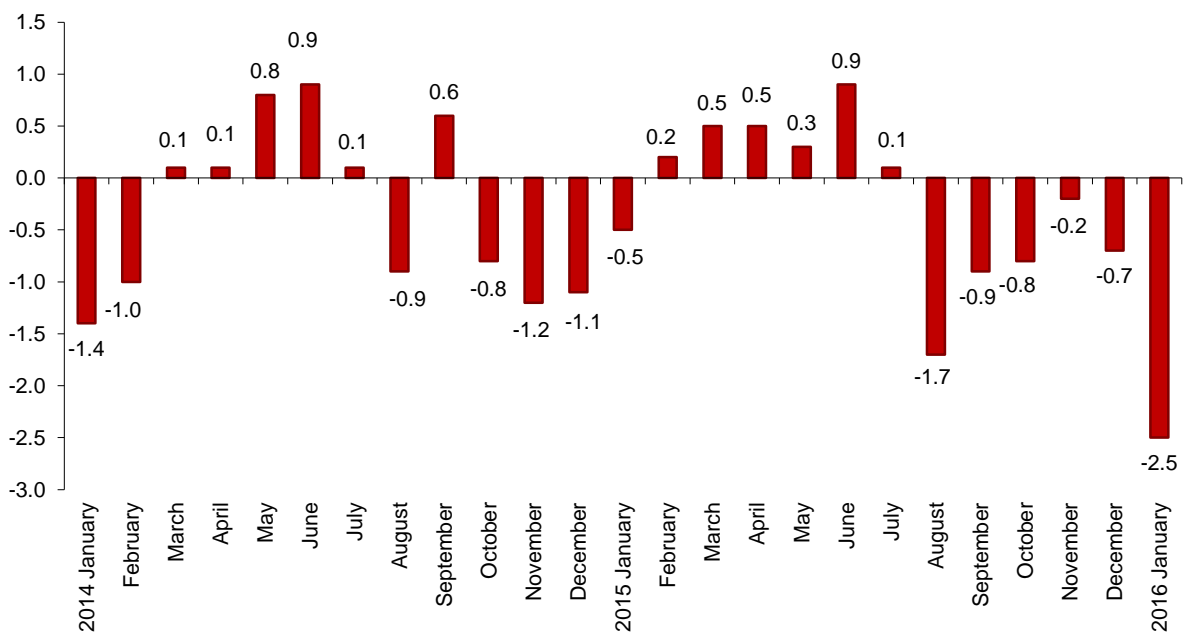
- **Energy**, whose monthly variation of **-9.8%** is influenced in **-2,489** by the decrease in the prices of *Production, transport and distribution of electric power* and to a lesser extent *Oil refinery*.

- **Intermediate goods**, with a rate of **-0.4%**. Of particular note in the fall in the prices of the *Production of precious metals and other non -ferrous metals*, the *Manufacture of products for animal food* and the *Manufacture of basic chemical products, nitrogenous compounds, fertilisers, plastics and synthetic rubber in primary forms*. Its contribution to the general IRPI was **-0.117**.

Amongst the industrial sectors that presented a positive effect on the general index, the most relevant was:

- **Non-durable consumer goods**, with a rate of **0.2%** and a repercussion of **0.045** due mainly to the rise in the price of the *Manufacture of vegetable and animal oils and fats*.

IPRI monthly evolution General index



A more detailed analysis showed the activities that most affected the monthly rate of the IPRI in the month of January.

Activities with high positive contribution in IPRI monthly rate

	Monthly rate (%)	Contribution
CNAE-09 Group		
Manufacture of vegetable and animal oils and fats	1.6	0,031
Manufacture of railway locomotives and rolling stock	2.6	0,016
Manufacture of other food products	0.7	0,016
Manufacture of pharmaceutical preparations	0.7	0,015

Activities with the most negative contribution in IPRI monthly rate

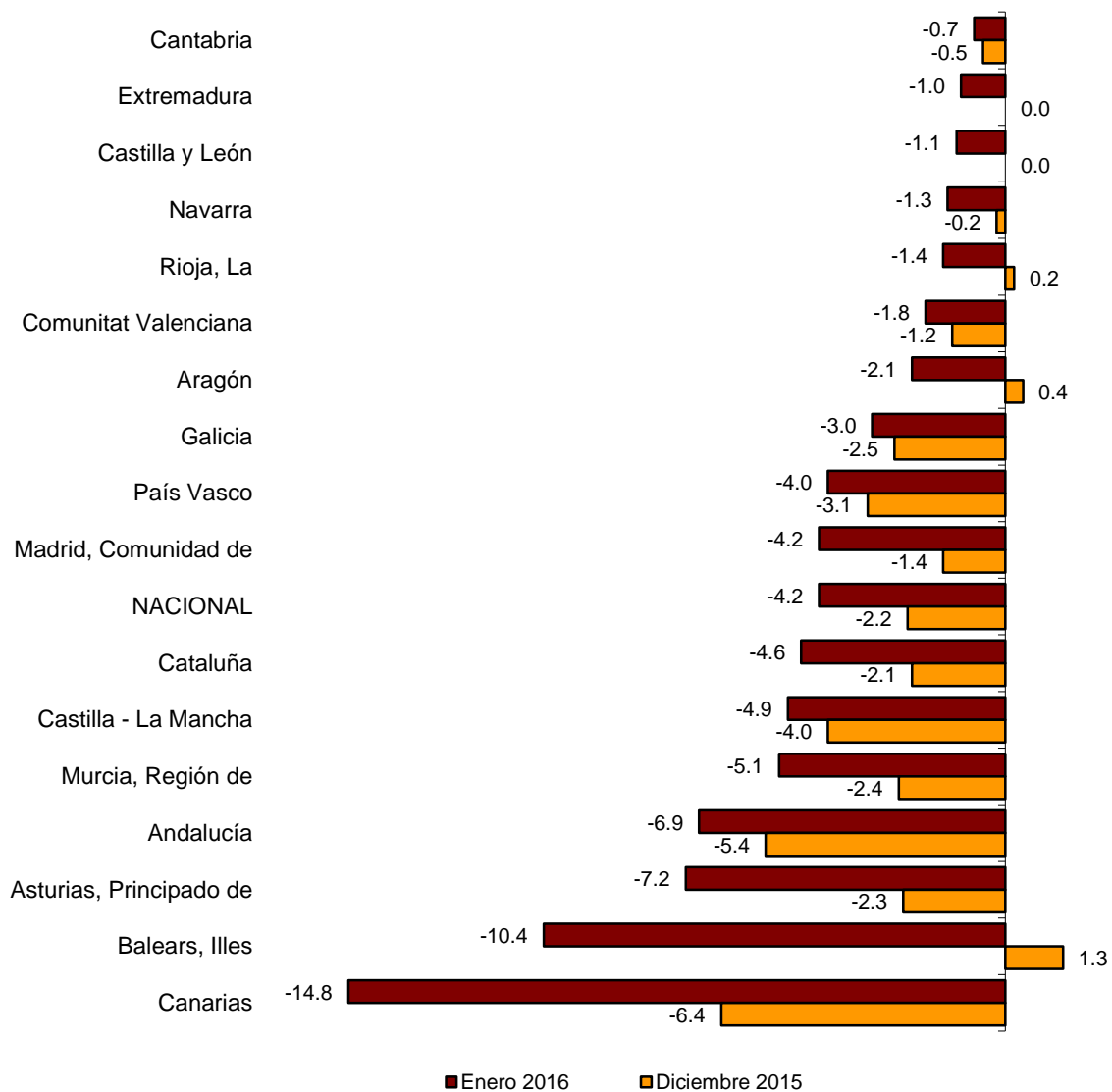
	Monthly rate (%)	Contribution
CNAE-09 Group		
Electric power generation, transmission and distribution	-10.9	-1,459
Manufacture of refined petroleum products	-11.9	-0,824
Manufacture of gas; distribution of gaseous fuels through mains	-6.1	-0,214
Manufacture of basic precious and other non-ferrous metals	-2.8	-0,037
Manufacture of prepared animal feeds	-1.1	-0,024
Manufacture of basic chemicals, fertilisers and nitrogen compounds, plastics and synthetic rubber in primary forms	-0.7	-0,021
Processing and preserving of meat and production of meat products	-0.4	-0,017
Manufacture of basic pharmaceutical products	-6.4	-0,017
Forging, pressing, stamping and roll-forming of metal; powder metallurgy	-1.6	-0,016

Results by Autonomous Community. Annual changes

The annual rate of the IPRI fell in all autonomous communities. The largest decreases occurred in the Balearic Islands (-10.4%), Canary Islands (-14.8%) and Principality of Asturias (-7.2%), whose rates fell by 11.7, 8.4 and 4.9 points, respectively.

IPRI annual variation rates

Index by Autonomous Communities



Industrial Prices Index. Base 2010 January 2016

Provisional data

1. National indices: general and by economic destination of the goods

	Index	% variation			Effect	
		Over previous month	Over last December	Over one year	Over previous month	Over last December
General index	102.8	-2.5	-2.5	-4.2		
Consumer goods	108.2	0.2	0.2	0.5	0.056	0.056
- Durable consumer goods	103.5	0.5	0.5	1.0	0.011	0.011
- Non-durable consumer goods	108.9	0.2	0.2	0.4	0.045	0.045
Capital goods	102.8	0.1	0.1	0.7	0.008	0.008
Intermediate goods	103.8	-0.4	-0.4	-1.7	-0.117	-0.117
Energy	94.6	-9.8	-9.8	-15.1	-2.489	-2.489

2. Variation rates in the last 12 months. General Index

Period	Index	% variation		
		Over previous month	Over last December	Over one year
2015 January	107.4	-0.5	-0.5	-2.8
February	107.7	0.2	-0.2	-1.6
March	108.1	0.5	0.2	-1.3
April	108.6	0.5	0.7	-0.9
May	109.0	0.3	1.0	-1.4
June	110.0	0.9	1.9	-1.4
July	110.1	0.1	2.0	-1.3
August	108.2	-1.7	0.3	-2.2
September	107.2	-0.9	-0.6	-3.6
October	106.4	-0.8	-1.4	-3.6
November	106.3	-0.2	-1.5	-2.6
December	105.5	-0.7	-1.7	-1.7
2016 January	102.8	-2.5	-2.5	-2.5

* Revised data

3. Total industry and classification by activity (CNAE 2009)

	Index	Over previous month		Over last December		Over one year
		% Variation	Effect	% Variation	Effect	% Variation
TOTAL INDUSTRY	102.8	-2.5		-2.5		-4.2
B. Mining and quarrying	101.1	-0.2	-0.002	-0.2	-0.002	-1.5
Mining of coal and lignite	108.6	3.0	0.004	3.0	0.004	0.9
Mining of metal ores	72.2	-5.4	-0.003	-5.4	-0.003	-16.8
Other mining and quarrying	101.9	-0.4	-0.003	-0.4	-0.003	-0.9
C. Manufacturing	101.7	-1.1	-0.871	-1.1	-0.871	-2.4
Manufacture of food products	112.1	0.2	0.032	0.2	0.032	0.0
Manufacture of beverages	109.3	0.1	0.005	0.1	0.005	0.0
Manufacture of tobacco products	120.8	0.3	0.001	0.3	0.001	0.5
Manufacture of textiles	106.1	0.0	0.000	0.0	0.000	0.3
Manufacture of wearing apparel	99.3	-0.2	-0.003	-0.2	-0.003	0.3
Manufacture of leather and related products	107.0	0.1	0.000	0.1	0.000	0.6
Manufacture of wood and of products of wood and cork, except furniture; manufacture of articles of straw and plaiting materials	105.7	0.2	0.003	0.2	0.003	0.8
Manufacture of paper and paper products	106.1	-0.3	-0.006	-0.3	-0.006	1.6
Printing and reproduction of recorded media	108.7	-0.4	-0.008	-0.4	-0.008	2.1
Manufacture of coke and refined petroleum products	65.1	-11.9	-0.824	-11.9	-0.824	-23.0
Manufacture of chemicals and chemical products	108.2	-0.4	-0.025	-0.4	-0.025	0.2
Manufacture of basic pharmaceutical products	101.0	-0.1	-0.002	-0.1	-0.002	1.0
Manufacture of rubber and plastic products	108.3	-0.1	-0.003	-0.1	-0.003	0.5
Manufacture of other non-metallic mineral products	101.9	0.0	0.002	0.0	0.002	-0.6
Manufacture of basic metals	90.0	-1.3	-0.048	-1.3	-0.048	-11.0
Manufacture of fabricated metal products, except machinery and equipment	100.6	-0.3	-0.024	-0.3	-0.024	-1.0
Manufacture of computer, electronic and optical products	87.0	0.1	0.001	0.1	0.001	0.1
Manufacture of electrical equipment	105.2	0.5	0.013	0.5	0.013	-0.6
Manufacture of machinery and equipment n.e.c.	103.9	0.2	0.006	0.2	0.006	0.4
Manufacture of motor vehicles, trailers and semi-trailers	101.3	-0.2	-0.010	-0.2	-0.010	0.1
Manufacture of other transport equipment	108.6	1.1	0.019	1.1	0.019	6.8
Manufacture of furniture	104.7	0.4	0.006	0.4	0.006	0.9
Other manufacturing	104.5	-0.8	-0.006	-0.8	-0.006	-0.7
Repair and installation of machinery and equipment	100.8	0.0	0.001	0.0	0.001	-0.1
D. Electricity and gas	107.3	-9.9	-1.673	-9.9	-1.673	-13.4
E. Water supply	117.3	0.3	0.004	0.3	0.004	0.9

4. Indices of Autonomous Communities: general and by economic destination (Continues)

	Index	% variation			Index	% variation		
		Over previous month	Over last December	Over one year		Over previous month	Over last December	Over one year
Andalucía				Aragón				
General index	99.7	-3.8	-3.8	-6.9	105.3	-1.7	-1.7	-2.1
Consumer goods	119.6	1.5	1.5	3.4	102.3	0.3	0.3	-0.4
- Durable consumer goods	105.3	0.5	0.5	0.1	102.0	0.3	0.3	0.8
- Non-durable consumer goods	120.6	1.6	1.6	3.6	102.4	0.2	0.2	-0.9
Capital goods	102.9	-0.1	-0.1	0.3	104.2	0.0	0.0	-0.4
Intermediate goods	100.7	-1.6	-1.6	-4.5	109.4	-0.2	-0.2	0.0
Energy	79.7	-12.0	-12.0	-20.5	99.9	-13.0	-13.0	-14.5
Asturias, Principado de				Balears, Illes				
General index	100.3	-3.4	-3.4	-7.2	105.9	-8.5	-8.5	-10.4
Consumer goods	102.2	-0.1	-0.1	-0.7	107.0	0.6	0.6	0.4
- Durable consumer goods	106.1	0.3	0.3	1.8	112.1	0.5	0.5	1.1
- Non-durable consumer goods	102.3	-0.1	-0.1	-0.9	106.0	0.6	0.6	0.3
Capital goods	98.1	0.7	0.7	2.3	100.6	0.2	0.2	0.2
Intermediate goods	93.4	0.0	0.0	-6.0	109.5	0.9	0.9	0.6
Energy	108.7	-9.8	-9.8	-14.5	105.7	-15.5	-15.5	-18.5
Canarias				Cantabria				
General index	93.6	-10.5	-10.5	-14.8	105.7	-0.6	-0.6	-0.7
Consumer goods	107.0	-0.3	-0.3	0.0	107.8	1.0	1.0	2.6
- Durable consumer goods	100.2	-0.1	-0.1	0.2	103.2	4.1	4.1	3.8
- Non-durable consumer goods	107.1	-0.3	-0.3	0.0	109.0	0.1	0.1	2.3
Capital goods	97.7	0.0	0.0	0.1	98.7	-0.9	-0.9	-0.5
Intermediate goods	111.9	1.1	1.1	-0.3	103.2	0.1	0.1	-2.4
Energy	90.9	-15.0	-15.0	-20.8	111.9	-6.5	-6.5	-5.5
Castilla y León				Castilla-La Mancha				
General index	104.7	-0.7	-0.7	-1.1	99.2	-3.0	-3.0	-4.9
Consumer goods	108.4	0.8	0.8	1.0	110.4	-0.4	-0.4	-0.4
- Durable consumer goods	106.1	1.1	1.1	1.5	104.5	0.0	0.0	0.9
- Non-durable consumer goods	108.4	0.7	0.7	1.0	110.7	-0.4	-0.4	-0.5
Capital goods	100.5	-0.2	-0.2	-0.9	101.9	-0.8	-0.8	-0.8
Intermediate goods	103.4	-0.9	-0.9	-1.4	105.4	0.2	0.2	-1.1
Energy	106.2	-8.1	-8.1	-10.0	81.1	-10.5	-10.5	-15.5
Cataluña				Comunitat Valenciana				
General index	101.4	-2.9	-2.9	-4.6	100.8	-1.0	-1.0	-1.8
Consumer goods	106.9	0.1	0.1	0.1	105.8	-0.1	-0.1	0.7
- Durable consumer goods	104.1	0.3	0.3	1.3	106.0	0.7	0.7	0.5
- Non-durable consumer goods	107.9	0.1	0.1	0.0	105.8	-0.2	-0.2	0.7
Capital goods	101.2	-0.1	-0.1	-0.1	102.0	0.2	0.2	0.7
Intermediate goods	105.5	-0.8	-0.8	-1.7	100.8	0.2	0.2	-0.7
Energy	90.6	-12.1	-12.1	-18.0	88.7	-7.8	-7.8	-13.4

4. Indices of Autonomous Communities: general and by economic destination (inclusion)

	Index	% variation			Index	% variation			
		Over previous month	Over last December	Over one year		Over previous month	Over last December	Over one year	
Extremadura					Galicia				
General index	107.1	-0.2	-0.2	-1.0	99.6	-1.3	-1.3	-3.0	
Consumer goods	105.5	0.4	0.4	0.3	104.1	0.0	0.0	0.1	
- Durable consumer goods	102.9	1.1	1.1	1.4	99.9	0.4	0.4	1.8	
- Non-durable consumer goods	105.6	0.4	0.4	0.2	104.3	0.0	0.0	0.0	
Capital goods	106.1	7.1	7.1	7.6	103.3	0.3	0.3	0.3	
Intermediate goods	107.8	-0.4	-0.4	-2.2	101.9	0.3	0.3	-2.7	
Energy	116.3	-6.2	-6.2	-7.0	84.6	-8.2	-8.2	-12.8	
Madrid, Comunidad de					Murcia, Región de				
General index	112.1	-2.4	-2.4	-4.2	102.0	-3.3	-3.3	-5.1	
Consumer goods	104.5	-1.0	-1.0	0.0	109.6	0.1	0.1	-1.4	
- Durable consumer goods	107.0	0.3	0.3	0.7	107.4	0.1	0.1	1.0	
- Non-durable consumer goods	104.2	-1.1	-1.1	-0.1	110.0	0.1	0.1	-1.7	
Capital goods	102.0	0.0	0.0	-0.1	105.8	0.4	0.4	-1.4	
Intermediate goods	107.6	0.2	0.2	0.5	105.7	-0.2	-0.2	0.7	
Energy	116.9	-4.6	-4.6	-8.8	90.5	-11.7	-11.7	-16.0	
Navarra, C. Foral de					País Vasco				
General index	104.2	-1.0	-1.0	-1.3	102.6	-2.5	-2.5	-4.0	
Consumer goods	107.5	0.3	0.3	-0.2	106.8	0.5	0.5	-0.8	
- Durable consumer goods	95.3	-0.1	-0.1	0.5	100.9	0.2	0.2	1.2	
- Non-durable consumer goods	108.6	0.3	0.3	-0.2	110.2	0.6	0.6	-1.4	
Capital goods	101.1	-0.2	-0.2	0.4	111.4	0.5	0.5	6.3	
Intermediate goods	103.3	-0.6	-0.6	-1.0	104.2	-0.3	-0.3	-2.1	
Energy	110.3	-11.1	-11.1	-14.4	87.3	-9.0	-9.0	-14.4	
Rioja, La									
General index	107.0	-0.9	-0.9	-1.4					
Consumer goods	110.6	0.1	0.1	0.4					
- Durable consumer goods	99.0	-1.8	-1.8	-0.1					
- Non-durable consumer goods	111.5	0.3	0.3	0.4					
Capital goods	99.7	0.0	0.0	-0.3					
Intermediate goods	111.2	0.9	0.9	1.5					
Energy	97.7	-7.6	-7.6	-12.1					

For further information see **INEbase** - www.ine.es/en/ All press releases at: www.ine.es/en/prensa/prensa_en.htm

Press Office: Telephone numbers: 91 583 93 63 / 94 08 – Fax: 91 583 90 87 - gprensa@ine.es

Information Area: Telephone number: 91 583 91 00 – Fax: 91 583 91 58 – www.ine.es/infoine