

25 March 2014

**Industrial Price Index (IPRI). Base 2010**  
February 2014. *Provisional data*

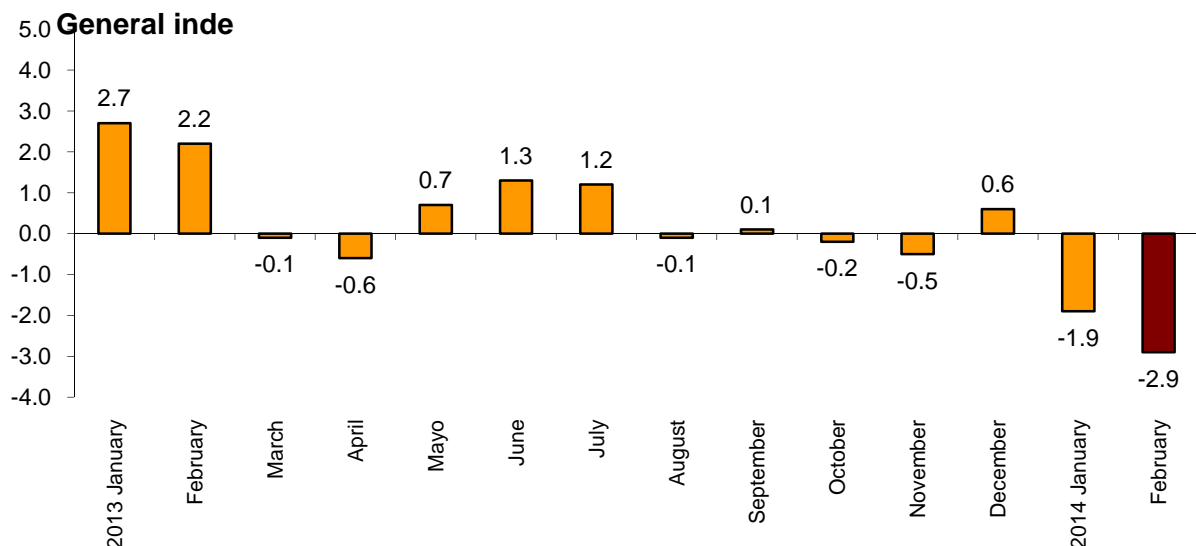
**The annual variation rate of the Industrial Price Index stands at  $-2.9\%$ , one point below that registered in January**

**The monthly variation rate of industrial prices is  $-0.7\%$**

**Annual evolution of industrial prices**

The annual rate of the General Industrial Price Index (IPRI) stood at  $-2.9\%$  in February, one point below that registered in January and the lowest since October 2009.

**Annual evolution of the IPRI**



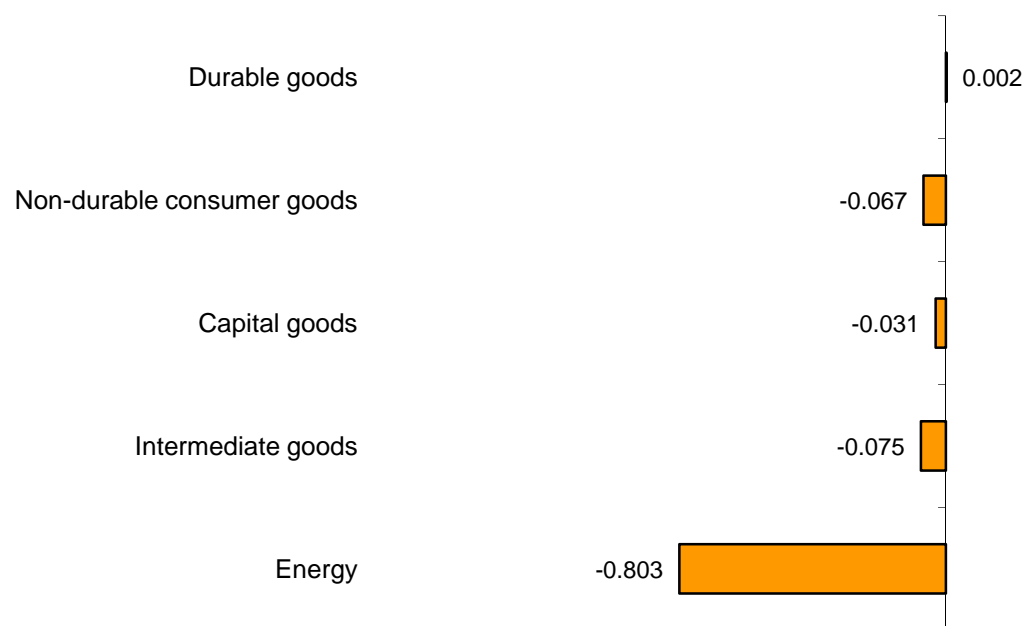
By economic destination of the goods, the industrial sector that influenced the most the decrease in the annual variation of the general IPRI was:

- **Energy**, whose rate stood at  $-6.8\%$ , nearly three points below that of the previous month and the lowest since October 2009. This behaviour was due to the decrease in the prices of the *Production, transportation and distribution of electrical energy*, greater than that registered in 2013, as well as the stability in the prices of *Refined petroleum products*, as compared with the increase registered in the previous year.

- **Intermediate goods**, whose annual variation decreased three tenths and stood at **-2.8%**, the lowest since November 2009, as a result of the decreases in the prices of *Manufacture of basic iron and steel and of ferro-alloys* and *Forging, pressing, stamping and roll-forming of metal; powder metallurgy*, which registered an increase in 2013.

- **Non-durable consumer goods**, registered a rate of **-0.9%**, two tenths lower than that of January and the lowest since August 2009. This behaviour was due to the decrease in the prices of *Manufacture of beverages*, as compared with the increase recorded last year.

#### Influence of the industrial sectors in the annual rate of IPRI



ANNUAL RATE OF GENERAL IPRI

1,0

#### Monthly evolution of industrial prices

In February, the monthly variation of the general IPRI was **-0.7%**.

By economic destination of the goods, the industrial sectors that recorded the greatest monthly negative effect on the general index were:

- **Energy**, with a monthly variation of **-2.5%** and an effect of **-0.651**. This behaviour was due to the decrease in the prices of the *Production, transportation and distribution of the electric power*.

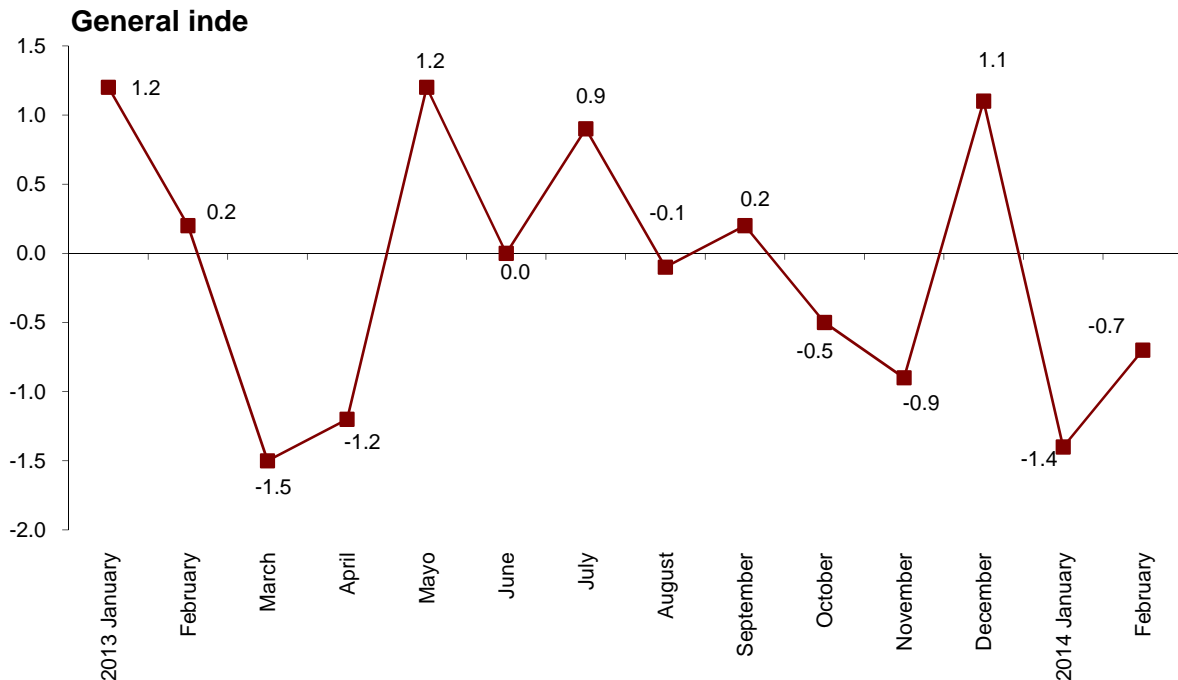
- **Non-durable consumer goods**, with a variation of **-0.1%** and an effect of **-0.034**, mainly due to the decrease in the prices of *Manufacture of beverages*.

- **Intermediate goods**, with a rate of **-0.1%** and an effect of **-0.031**. Worth noting in this behaviour the decrease in the prices of *Forging, pressing, stamping and roll-forming of metal; powder metallurgy* and *Manufacture of other electrical equipment*.

In turn, the only industrial sector with a positive monthly effect on the IPRI was:

- **Durable goods**, with a variation of **0.1%** and an effect of **0.003**.

**Monthly evolution of the IPRI**



A more detailed analysis showed the activities that most affected the monthly rate of the IPRI in the month of February.

**Activities with the greatest positive effect on the monthly rate of the IPRI**

	Monthly rate (%)	Effect
<b>CNAE-09</b>		
Manufacture of refined petroleum products	0.7	0.057
Manufacture of basic chemicals, fertilizers and nitrogen compounds, plastics and synthetic rubber in primary forms	0.7	0.023
Manufacture of electric motors, generators, transformers and electricity distribution and control apparatus	1.1	0.016

**Activities with the greatest negative effect on the monthly rate of the IPRI**

	Monthly rate (%)	Effect
<b>CNAE-09</b>		
Electric power generation, transmission and distribution	-5.7	-0.715
Forging, pressing, stamping and roll-forming of metal; powder metallurgy	-2.0	-0.021
Manufacture of beverages	-0.5	-0.019
Repair of fabricated metal products, machinery and equipment	-1.4	-0.017
Manufacture of other electrical equipment	-7.3	-0.014

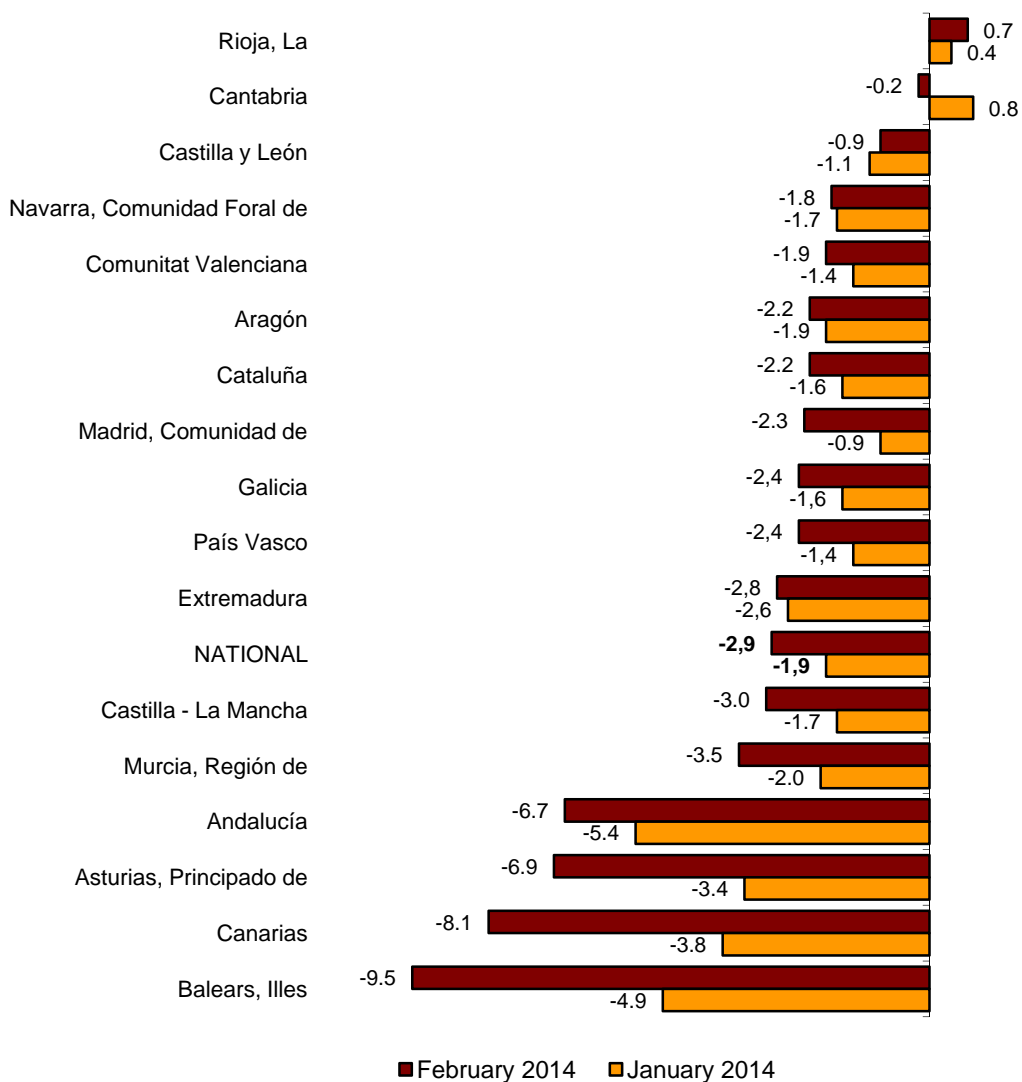
### Results by Autonomous Community. Annual variation rates

The annual rate of the IPRI decreased in 15 Autonomous Communities, highlighting Illes Balears (-9.5%) and Canarias (-8.1%) with decreases of 4.6 and 4.3 points, respectively.

In turn, the only Autonomous Communities that registered an increase in their rates were La Rioja (0.7%) and Castilla y León (-0.9%), with increases of three and two tenths, respectively.

#### Annual rates of the IPRI

Index by Autonomous Community



## Industrial Prices Index. Base 2010 February 2014

Provisional data

### 1. National indices: general and by economic destination of the goods

	Index	% variation			Effect	
		Over previous month	Over last December	Over one year	Over previous month	Over last December
General index	109.6	-0.7	-2.1	-2.9		
Consumer goods	106.6	-0.1	-0.2	-0.9	-0.031	-0.061
- Durable consumer goods	102.3	0.1	0.4	0.1	0.003	0.008
- Non-durable consumer goods	107.3	-0.1	-0.3	-0.9	-0.034	-0.068
Capital goods	101.3	-0.2	0.1	-0.3	-0.024	0.011
Intermediate goods	106.7	-0.1	0.0	-2.8	-0.031	-0.013
Energy	121.3	-2.5	-7.6	-6.8	-0.651	-2.053

### 2. Variation rates in the last 12 months. General Index

Period	Index	% variation		
		Over previous month	Over last December	Over one year
2013 February	112.9	0.2	1.4	2.2
March	111.2	-1.5	-0.1	-0.1
April	109.9	-1.2	-1.3	-0.6
May	111.1	1.2	-0.1	0.7
June	111.2	0.0	-0.1	1.3
July	112.2	0.9	0.8	1.2
August	112.1	-0.1	0.7	-0.1
September	112.3	0.2	0.9	0.1
October	111.7	-0.5	0.3	-0.2
November	110.7	-0.9	-0.5	-0.5
December	112.0	1.1	0.6	0.6
2014 January *	110.4	-1.4	-1.4	-1.9
February	109.6	-0.7	-2.1	-2.9

\* Revised data

### 3. Total industry and classification by activity (CNAE 2009)

	Index	Over previous month		Over last December		Over one year
		% Variation	Effect	% Variation	Effect	% Variation
<b>TOTAL INDUSTRY</b>	109.6	-0.7		-2.1		-2.9
<b>B. Mining and quarrying</b>	102.5	-0.2	-0.002	-0.4	-0.004	-1.2
Mining of coal and lignite	107.5	-0.2	0.000	-1.6	-0.002	0.0
Mining of metal ores	91.1	-2.5	-0.001	-1.5	-0.001	-8.9
Other mining and quarrying	102.3	-0.1	0.000	-0.1	-0.001	-0.8
<b>C. Manufacturing</b>	108.1	0.0	-0.027	-0.1	-0.098	-2.4
Manufacture of food products	111.4	-0.2	-0.043	-0.5	-0.090	-3.4
Manufacture of beverages	108.0	-0.5	-0.019	-0.2	-0.006	0.4
Manufacture of tobacco products	116.6	0.0	0.000	1.2	0.003	2.6
Manufacture of textiles	106.3	0.2	0.002	0.6	0.006	0.8
Manufacture of wearing apparel	98.2	0.3	0.003	0.0	0.000	-1.0
Manufacture of leather and related products	105.8	-0.1	-0.001	0.0	0.000	0.6
Manufacture of wood and of products of wood and cork, except furniture; manufacture of articles of straw and plaiting materials	104.1	0.3	0.004	0.4	0.006	0.4
Manufacture of paper and paper products	104.9	0.0	0.000	0.0	0.001	0.2
Printing and reproduction of recorded media	105.6	-0.1	-0.002	-0.3	-0.005	0.8
Manufacture of coke and refined petroleum products	129.4	0.7	0.057	-0.4	-0.036	-9.2
Manufacture of chemicals and chemical products	112.7	0.6	0.033	0.6	0.034	-1.8
Manufacture of basic pharmaceutical products	99.3	0.2	0.004	0.9	0.020	0.8
Manufacture of rubber and plastic products	108.4	-0.1	-0.004	-0.5	-0.015	-0.1
Manufacture of other non-metallic mineral products	101.7	-0.3	-0.015	-0.5	-0.020	0.0
Manufacture of basic metals	100.4	-0.1	-0.003	-0.3	-0.013	-7.7
Manufacture of fabricated metal products, except machinery and equipment	101.3	-0.4	-0.024	0.0	0.001	-1.2
Manufacture of computer, electronic and optical products	89.3	-0.5	-0.004	-0.7	-0.005	-4.2
Manufacture of electrical equipment	105.8	0.2	0.007	0.4	0.011	-1.0
Manufacture of machinery and equipment n.e.c.	102.7	0.2	0.006	0.4	0.010	0.6
Manufacture of motor vehicles, trailers and semi-trailers	101.3	0.0	0.002	0.1	0.006	-0.2
Manufacture of other transport equipment	99.1	-0.8	-0.012	-0.2	-0.003	-1.3
Manufacture of furniture	103.0	0.1	0.001	0.1	0.002	0.3
Other manufacturing	104.4	-0.1	-0.001	-0.1	-0.001	-0.2
Repair and installation of machinery and equipment	100.1	-1.2	-0.018	-0.2	-0.003	0.1
<b>D. Electricity and gas</b>	117.0	-4.4	-0.715	-11.8	-2.029	-6.8
<b>E. Water supply</b>	114.7	0.5	0.007	1.0	0.015	4.4

(Continues)

#### 4. Indices of Autonomous Communities: general and by economic destination

	Index	% variation			Index	% variation		
		Over previous month	Over last December	Over one year		Over previous month	Over last December	Over one year
<b>Andalucía</b>				<b>Aragón</b>				
General index	114.0	-0.6	-2.6	-6.7	107.4	-0.5	-1.9	-2.2
Consumer goods	107.4	-0.2	-0.8	-8.5	103.4	0.4	0.1	0.4
- Durable consumer goods	104.5	0.3	-0.1	-2.2	100.1	0.4	0.2	-1.2
- Non-durable consumer goods	107.6	-0.2	-0.8	-8.8	105.0	0.4	0.1	1.1
Capital goods	102.0	0.1	-0.2	1.7	103.8	0.2	0.1	0.5
Intermediate goods	110.6	0.0	-0.8	-5.0	110.4	0.0	-0.2	-4.6
Energy	126.4	-1.5	-6.0	-8.2	114.0	-5.4	-14.7	-6.8
<b>Asturias, Principado de</b>				<b>Balears, Illes</b>				
General index	100.0	-4.6	-9.0	-6.9	99.3	-8.4	-20.2	-9.5
Consumer goods	104.1	-0.3	-1.1	-0.4	106.7	-0.2	-0.4	1.7
- Durable consumer goods	103.6	0.0	0.0	0.8	108.7	-0.2	0.1	0.0
- Non-durable consumer goods	104.5	-0.3	-1.2	-0.5	106.2	-0.2	-0.5	2.0
Capital goods	95.4	0.0	0.2	-2.2	100.5	0.1	0.5	0.5
Intermediate goods	98.2	-0.1	0.4	-4.4	109.7	0.1	-0.3	-2.1
Energy	100.6	-14.0	-25.4	-16.5	91.8	-16.6	-35.4	-20.8
<b>Canarias</b>				<b>Cantabria</b>				
General index	113.3	-5.7	-13.2	-8.1	107.1	-0.9	-1.5	-0.2
Consumer goods	103.3	-3.3	-2.3	-3.0	104.8	0.0	0.3	3.8
- Durable consumer goods	99.8	0.7	0.6	0.7	101.3	-0.2	2.5	3.0
- Non-durable consumer goods	103.3	-3.4	-2.4	-3.1	105.6	0.1	-0.4	4.1
Capital goods	98.4	0.2	-0.2	-0.7	99.6	0.1	0.3	-1.4
Intermediate goods	112.6	-0.7	0.4	2.2	108.6	-0.6	-0.7	-1.2
Energy	121.2	-7.3	-17.8	-11.2	116.8	-5.1	-9.3	-7.2
<b>Castilla y León</b>				<b>Castilla-La Mancha</b>				
General index	106.1	-0.2	-0.9	-0.9	112.6	-0.2	-1.1	-3.0
Consumer goods	108.7	0.1	-0.1	1.4	110.8	0.0	-0.7	-0.8
- Durable consumer goods	104.3	1.2	1.3	1.0	103.5	0.0	0.0	0.8
- Non-durable consumer goods	108.8	0.1	-0.2	1.4	111.2	0.0	-0.7	-0.9
Capital goods	101.5	0.1	0.1	-0.3	102.7	0.1	0.4	0.6
Intermediate goods	104.7	0.0	-0.2	-2.7	106.9	-0.1	0.1	-2.4
Energy	114.1	-2.8	-9.6	-4.3	125.3	-0.5	-3.0	-6.7
<b>Cataluña</b>				<b>Comunitat Valenciana</b>				
General index	108.8	-0.7	-2.0	-2.2	105.5	0.1	-0.1	-1.9
Consumer goods	106.3	-0.4	-0.4	-0.2	105.3	0.1	0.4	0.5
- Durable consumer goods	101.1	0.0	0.1	-0.7	105.1	0.1	0.4	1.0
- Non-durable consumer goods	107.4	-0.4	-0.4	-0.2	105.3	0.2	0.4	0.5
Capital goods	100.4	-0.5	0.1	-0.6	100.7	0.0	0.0	-0.2
Intermediate goods	109.8	-0.1	-0.1	-2.6	102.1	0.1	0.3	-2.4
Energy	120.5	-2.3	-7.9	-5.8	124.6	0.2	-2.5	-7.1

(Conclusion)

#### 4. Indices of Autonomous Communities: general and by economic destination

	Index	% variation			Index	% variation		
		Over previous month	Over last December	Over one year		Over previous month	Over last December	Over one year
<b>Extremadura</b>				<b>Galicia</b>				
General index	106.6	-0.5	-1.6	-2.8	107.2	-0.4	-0.6	-2.4
Consumer goods	104.1	-0.1	-0.6	0.2	104.5	0.5	1.1	1.1
- Durable consumer goods	101.8	0.0	0.0	0.0	98.8	0.0	0.0	0.2
- Non-durable consumer goods	104.1	-0.1	-0.6	0.2	104.8	0.5	1.2	1.1
Capital goods	98.2	1.1	0.5	-1.6	102.5	-0.5	-0.3	-0.6
Intermediate goods	110.5	-0.3	-0.2	-6.2	103.6	-0.8	-0.7	-3.7
Energy	114.0	-3.7	-11.6	-5.5	124.4	-0.7	-3.3	-7.1
<b>Madrid, Comunidad de</b>				<b>Murcia, Región de</b>				
General index	113.4	-0.7	-1.8	-2.3	111.0	-1.1	-3.6	-3.5
Consumer goods	102.8	0.1	0.0	0.3	112.6	-0.1	-0.4	-1.1
- Durable consumer goods	105.1	0.0	0.4	0.7	105.0	-0.6	-0.3	0.4
- Non-durable consumer goods	102.6	0.1	0.0	0.3	113.6	-0.1	-0.5	-1.3
Capital goods	101.5	0.1	0.3	-0.1	105.5	0.0	-0.7	-0.7
Intermediate goods	106.7	0.1	0.6	-0.1	104.9	0.5	0.5	-2.9
Energy	121.2	-1.6	-4.0	-4.8	119.2	-4.0	-11.3	-8.1
<b>Navarra, C. Foral de</b>				<b>País Vasco</b>				
General index	104.8	-0.6	-1.6	-1.8	113.2	-0.3	-0.8	-2.4
Consumer goods	108.0	-0.3	-0.2	-1.1	108.3	-0.1	-0.4	0.5
- Durable consumer goods	100.8	0.0	4.1	3.8	100.8	0.2	0.1	-0.1
- Non-durable consumer goods	108.7	-0.3	-0.6	-1.5	112.3	-0.2	-0.5	0.6
Capital goods	101.3	0.0	-0.5	-0.7	101.8	-0.4	0.5	-0.9
Intermediate goods	104.6	0.0	0.5	-2.5	107.4	-0.4	0.0	-1.9
Energy	110.7	-7.5	-19.5	-9.4	125.2	-0.1	-2.8	-5.2
<b>Rioja, La</b>								
General index	108.2	0.5	0.0	0.7				
Consumer goods	108.7	0.2	0.6	1.8				
- Durable consumer goods	102.3	1.8	0.8	1.0				
- Non-durable consumer goods	109.2	0.1	0.6	1.8				
Capital goods	100.2	0.6	0.1	0.1				
Intermediate goods	111.7	2.0	1.8	0.0				
Energy	111.7	-0.8	-4.6	-1.6				

For further information see **INEbase** - [www.ine.es/en/](http://www.ine.es/en/) All press releases at: [www.ine.es/en/prensa/prensa\\_en.htm](http://www.ine.es/en/prensa/prensa_en.htm)

**Press Office:** Telephone numbers: 91 583 93 63 / 94 08 – Fax: 91 583 90 87 - [gprensa@ine.es](mailto:gprensa@ine.es)

**Information Area:** Telephone number: 91 583 91 00 – Fax: 91 583 91 58 – [www.ine.es/infoine](http://www.ine.es/infoine)