

25 October 2016

Índice de Precios Industriales. Base 2010
Septiembre 2016. *Datos provisionales*

La tasa anual del Índice de Precios Industriales se sitúa en el -2,0%, más de un punto por encima de la del mes de agosto

La variación mensual de los precios industriales es del 0,3%

Evolución anual de los precios industriales

La tasa anual del Índice de Precios Industriales (IPRI) general en el mes de septiembre es del -2,0%, más de un punto por encima de la registrada en agosto.

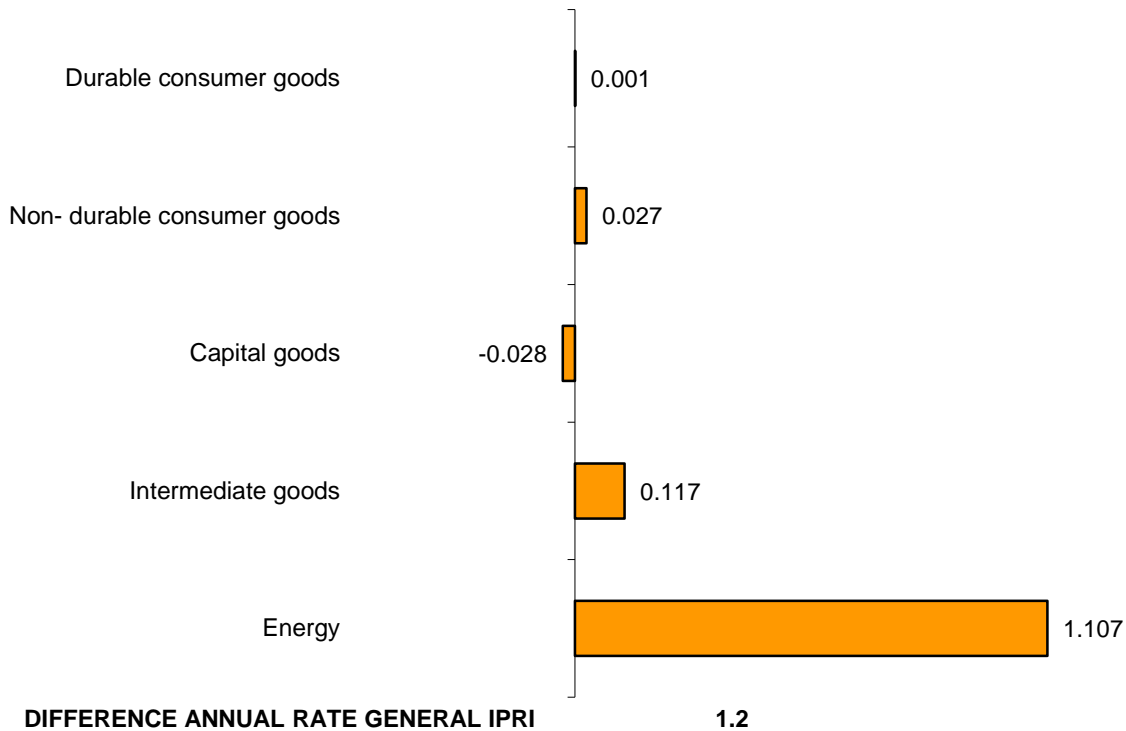
Por destino económico de los bienes, los sectores industriales con mayor influencia positiva en este aumento son:

- **Energía**, que aumenta cuatro puntos su variación hasta el -6,5%, debido a la subida de los precios de la *Producción, transporte y distribución de energía eléctrica* y el *Refino de petróleo*, que bajaron en septiembre de 2015.
- **Bienes intermedios**, con un tasa del -1,1%, cuatro décimas superior al mes pasado, a causa del aumento de los precios de la *Fabricación de productos químicos básicos, compuestos nitrogenados, fertilizantes, plásticos y caucho sintético en formas primarias*, frente al descenso registrado el año pasado.
- **Bienes de consumo no duradero**, cuya variación se sitúa en el -0,3%, una décima por encima de la de agosto, a consecuencia de la estabilidad de los precios del *Procesado y conservación de carne y elaboración de productos cárnicos*, que disminuyeron el año anterior.

Por su parte, el único sector industrial con influencia negativa es:

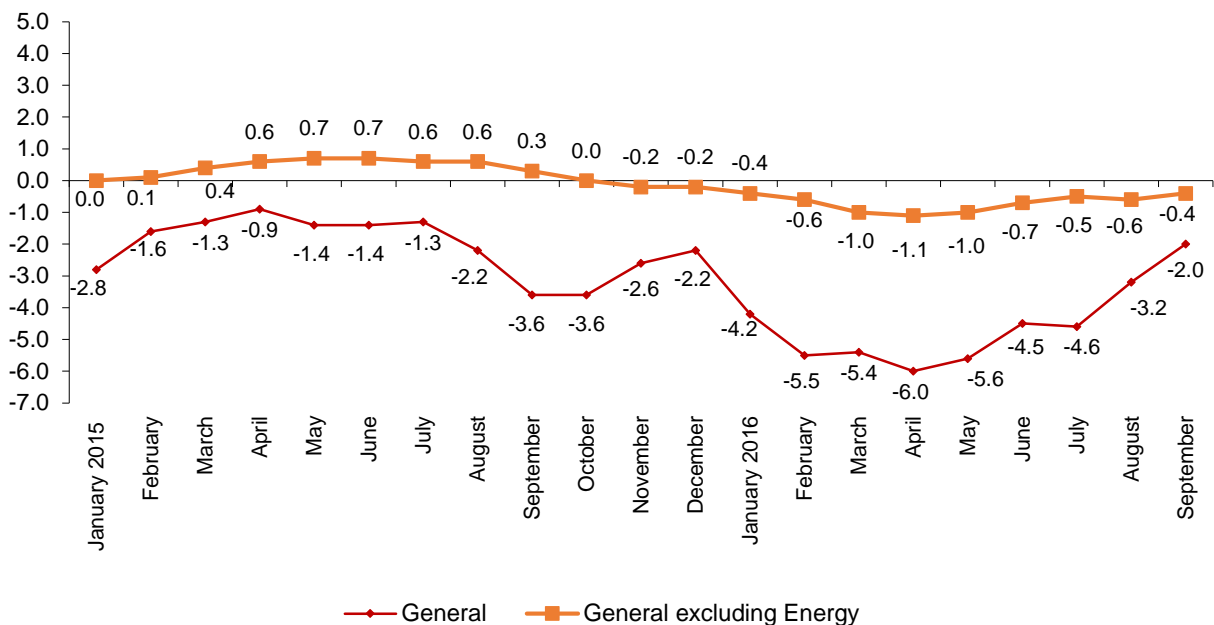
- **Bienes de equipo**, que presenta una tasa del 0,3%, dos décimas inferior a la de agosto. Destaca en esta evolución la bajada de los precios de la *Reparación de productos metálicos, maquinaria y equipo*, que subieron en septiembre del año pasado, y el incremento de los precios de la *Fabricación de locomotoras y material ferroviario*, menor que el de 2015.

Contribution of the industrial sectors in the annual rate of the IPRI



La tasa de variación anual del **índice general sin Energía** sube dos décimas hasta el **-0,4%**, con lo que disminuye su diferencia con la del IPRI general, situándose más de un punto y medio por encima de ella.

**Annual evolution of the IPRI
General index and general index excluding Energy**



Evolución mensual de los precios industriales

En septiembre la tasa de variación mensual del IPRI general es del **0,3%**.

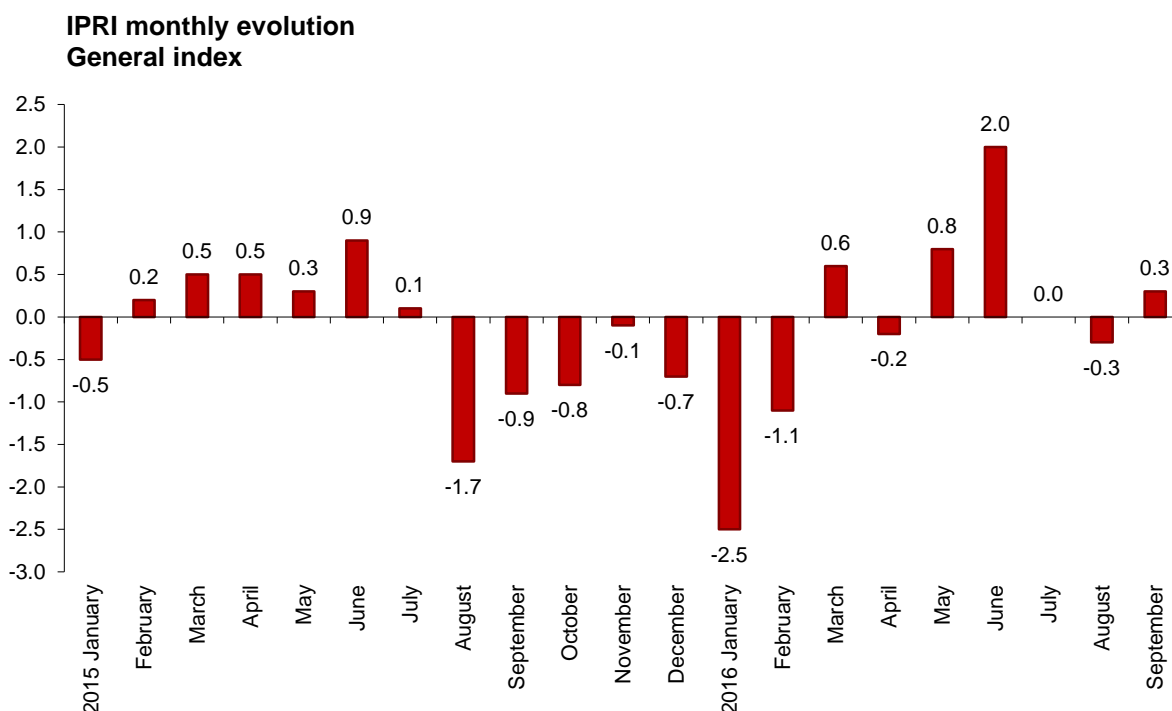
Por destino económico de los bienes, entre los sectores industriales que tienen repercusión mensual positiva en el índice general destaca:

- **Energía**, con una tasa del **1,5%** y una repercusión de **0,362**, debidas a la subida de los precios de la *Producción, transporte y distribución de energía eléctrica* y, en menor medida, del *Refino de petróleo*.

Cabe reseñar también, aunque en sentido contrario, la bajada de los precios de la *Producción de gas; distribución por tubería de combustibles gaseosos*.

Por su parte, los sectores industriales con repercusión negativa en el índice general son:

- **Bienes intermedios**, cuya variación mensual del **-0,1%** repercute **-0,041**. Destaca en este comportamiento el descenso de los precios de *Fabricación de otros productos químicos*, la *Fabricación de productos de plástico* y la *Fabricación de pasta papelera, papel y cartón*.
- **Bienes de consumo no duradero**, que registra una tasa del **-0,1%**, consecuencia de la bajada de los precios de la *Fabricación de aceites y grasas vegetales y animales*. Su repercusión en el IPRI general es de **-0,022**.



En un análisis más detallado, se pueden observar las actividades que más han afectado a la tasa mensual del IPRI en el mes de septiembre.

Activities with high positive contribution in IPRI monthly rate

| | Monthly rate (%) | Contribution |
|--|------------------|--------------|
| CNAE-09 Group | | |
| Electric power generation, transmission and distribution | 2.0 | 0.245 |
| Manufacture of refined petroleum products | 1.9 | 0.144 |
| Manufacture of railway locomotives and rolling stock | 2.9 | 0.019 |
| Manufacture of basic iron and steel and of ferro-alloys | 0.8 | 0.015 |

Activities with the most negative contribution in IPRI monthly rate

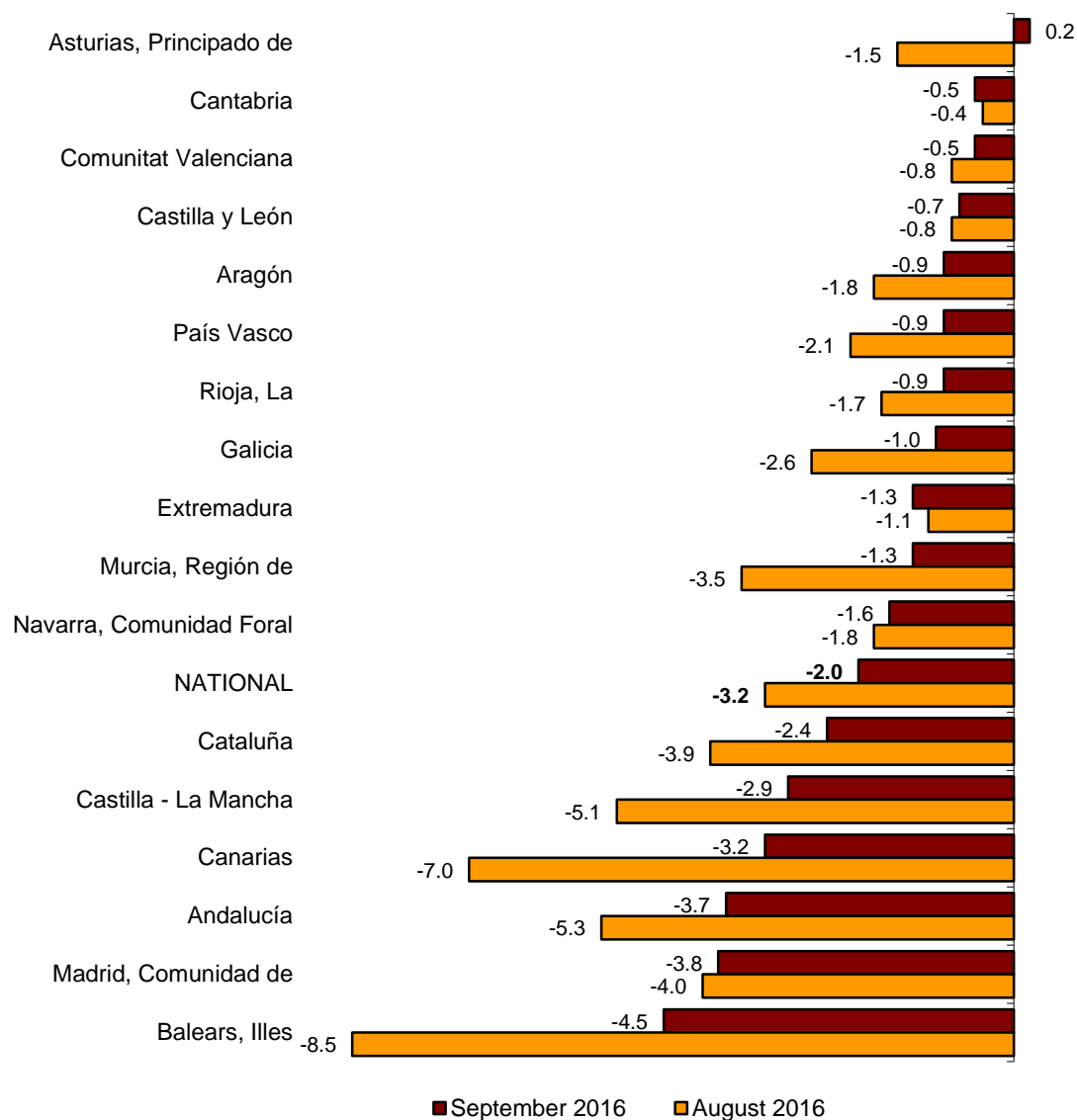
| | Monthly rate (%) | Contribution |
|---|------------------|--------------|
| CNAE-09 Group | | |
| Manufacture of gas; distribution of gaseous fuels through mains | -0.8 | -0.025 |
| Manufacture of vegetable and animal oils and fats | -1.2 | -0.024 |
| Manufacture of other chemicals products | -1.8 | -0.012 |
| Manufacture of plastics products | -0.3 | -0.008 |
| Manufacture of pulp, paper and paperboard | -1.1 | -0.007 |

Resultados por comunidades autónomas. Tasas de variación anual

La tasa anual del IPRI aumenta en 15 comunidades autónomas. Las mayores subidas se registran en Illes Balears (-4,5%) y Canarias (-3,2%), cuyas tasas se incrementan 4,0 y 3,8 puntos, respectivamente.

Por su parte, únicamente dos comunidades disminuyen su tasa anual: Extremadura (-1,3%) y Cantabria (-0,5%), con descensos de dos y una décima, respectivamente.

IPRI annual variation rates
Index by Autonomous Communities



Industrial Prices Index. Base 2010 September 2016

Provisional data

1. National indices: general and by economic destination of the goods

| | Index | % variation | | | Effect | |
|------------------------------|-------|---------------------|--------------------|---------------|---------------------|--------------------|
| | | Over previous month | Over last December | Over one year | Over previous month | Over last December |
| General index | 105.1 | 0.3 | -0.4 | -2.0 | | |
| Consumer goods | 108.5 | -0.1 | 0.5 | -0.1 | -0.021 | 0.152 |
| - Durable consumer goods | 104.2 | 0.0 | 1.1 | 1.2 | 0.001 | 0.025 |
| - Non-durable consumer goods | 109.2 | -0.1 | 0.5 | -0.3 | -0.022 | 0.128 |
| Capital goods | 103.3 | 0.1 | 0.5 | 0.3 | 0.010 | 0.075 |
| Intermediate goods | 104.5 | -0.1 | 0.3 | -1.1 | -0.041 | 0.093 |
| Energy | 101.9 | 1.5 | -2.8 | -6.5 | 0.362 | -0.724 |

2. Variation rates in the last 12 months. General Index

| Period | Index | % variation | | |
|----------------|-------|---------------------|--------------------|---------------|
| | | Over previous month | Over last December | Over one year |
| 2015 September | 107.2 | -0.9 | -0.6 | -3.6 |
| October | 106.4 | -0.8 | -1.4 | -3.6 |
| November | 106.3 | -0.1 | -1.5 | -2.6 |
| December | 105.5 | -0.7 | -2.2 | -2.2 |
| 2016 January | 102.8 | -2.5 | -2.5 | -4.2 |
| February | 101.7 | -1.1 | -3.6 | -5.5 |
| March | 102.3 | 0.6 | -3.1 | -5.4 |
| April | 102.1 | -0.2 | -3.2 | -6.0 |
| May | 103.0 | 0.8 | -2.4 | -5.6 |
| June | 105.0 | 2.0 | -0.5 | -4.5 |
| July * | 105.0 | 0.0 | -0.4 | -4.6 |
| August * | 104.8 | -0.3 | -0.7 | -3.2 |
| September | 105.1 | 0.3 | -0.4 | -2.0 |

* Revised data

3. Total industry and classification by activity (CNAE 2009)

| | Index | Over previous month | | Over last December | | Over one year |
|--|-------|---------------------|--------|--------------------|--------|---------------|
| | | % Variation | Effect | % Variation | Effect | % Variation |
| TOTAL INDUSTRY | 105.1 | 0.3 | | -0.4 | | -2.0 |
| B. Mining and quarrying | 100.8 | 0.2 | 0.002 | -0.5 | -0.004 | -1.3 |
| Mining of coal and lignite | 110.9 | 2.3 | 0.003 | 5.5 | 0.008 | 2.8 |
| Mining of metal ores | 76.2 | 0.0 | 0.000 | -0.1 | 0.000 | -10.3 |
| Other mining and quarrying | 100.7 | -0.2 | -0.001 | -1.7 | -0.012 | -1.6 |
| C. Manufacturing | 104.1 | 0.1 | 0.093 | 1.3 | 1.028 | -0.8 |
| Manufacture of food products | 112.1 | -0.2 | -0.031 | 0.2 | 0.031 | -1.3 |
| Manufacture of beverages | 109.8 | 0.0 | 0.000 | 0.6 | 0.022 | 0.9 |
| Manufacture of tobacco products | 120.8 | 0.0 | 0.000 | 0.3 | 0.001 | 0.3 |
| Manufacture of textiles | 105.3 | -0.4 | -0.004 | -0.7 | -0.007 | -0.8 |
| Manufacture of wearing apparel | 100.1 | 0.3 | 0.004 | 0.5 | 0.007 | 0.4 |
| Manufacture of leather and related products | 107.3 | 0.2 | 0.001 | 0.3 | 0.002 | 0.5 |
| Manufacture of wood and of products of wood and cork, except furniture; manufacture of articles of straw and plaiting materials | 106.5 | 0.0 | 0.000 | 0.9 | 0.014 | 0.9 |
| Manufacture of paper and paper products | 104.6 | -0.4 | -0.010 | -1.7 | -0.040 | -1.9 |
| Printing and reproduction of recorded media | 107.3 | -0.1 | -0.002 | -1.6 | -0.030 | 0.2 |
| Manufacture of coke and refined petroleum products | 81.4 | 1.9 | 0.144 | 10.1 | 0.695 | -6.1 |
| Manufacture of chemicals and chemical products | 107.9 | -0.2 | -0.014 | -0.8 | -0.045 | -2.2 |
| Manufacture of basic pharmaceutical products | 101.3 | 0.2 | 0.004 | 0.1 | 0.003 | 0.5 |
| Manufacture of rubber and plastic products | 107.6 | -0.2 | -0.008 | -0.7 | -0.025 | -1.4 |
| Manufacture of other non-metallic mineral products | 102.2 | -0.1 | -0.007 | 0.3 | 0.013 | 0.1 |
| Manufacture of basic metals | 97.8 | 0.2 | 0.009 | 7.6 | 0.283 | 0.5 |
| Manufacture of fabricated metal products, except machinery and equipment | 101.3 | -0.1 | -0.008 | 0.4 | 0.029 | -0.1 |
| Manufacture of computer, electronic and optical products | 87.0 | 0.0 | 0.000 | 0.1 | 0.001 | 0.1 |
| Manufacture of electrical equipment | 104.5 | 0.1 | 0.001 | -0.2 | -0.006 | -0.4 |
| Manufacture of machinery and equipment n.e.c. | 104.3 | 0.0 | -0.001 | 0.7 | 0.018 | 0.6 |
| Manufacture of motor vehicles, trailers and semi-trailers | 101.2 | 0.0 | 0.001 | -0.3 | -0.014 | -0.1 |
| Manufacture of other transport equipment | 111.4 | 1.2 | 0.020 | 3.7 | 0.063 | 2.2 |
| Manufacture of furniture | 105.2 | 0.0 | 0.000 | 0.8 | 0.013 | 0.9 |
| Other manufacturing | 105.3 | 0.0 | 0.000 | 0.0 | 0.000 | -0.6 |
| Repair and installation of machinery and equipment | 100.8 | -0.5 | -0.007 | 0.0 | 0.000 | 0.2 |
| D. Electricity and gas | 109.1 | 1.4 | 0.220 | -8.4 | -1.422 | -8.1 |
| E. Water supply | 116.5 | -0.4 | -0.006 | -0.4 | -0.006 | 0.0 |

(Continues)

4. Indices of Autonomous Communities: general and by economic destination

| | Index | % variation | | | Index | % variation | | |
|--------------------------------|-------|---------------------|--------------------|-----------------------------|-------|---------------------|--------------------|---------------|
| | | Over previous month | Over last December | Over one year | | Over previous month | Over last December | Over one year |
| Andalucía | | | | Aragón | | | | |
| General index | 105.5 | 0.4 | 1.8 | -3.7 | 106.5 | 0.3 | -0.6 | -0.9 |
| Consumer goods | 118.9 | 0.0 | 0.9 | -3.9 | 104.3 | 0.4 | 2.2 | 2.2 |
| - Durable consumer goods | 107.5 | -0.1 | 2.5 | 2.4 | 103.1 | 0.0 | 1.4 | 2.1 |
| - Non-durable consumer goods | 119.7 | 0.0 | 0.8 | -4.3 | 104.8 | 0.5 | 2.6 | 2.2 |
| Capital goods | 102.7 | 0.0 | -0.3 | -0.1 | 105.4 | 0.4 | 1.1 | 0.9 |
| Intermediate goods | 101.6 | -0.8 | -0.7 | -3.0 | 107.5 | -0.6 | -1.9 | -2.9 |
| Energy | 95.2 | 1.8 | 5.2 | -5.2 | 108.8 | 2.5 | -5.3 | -4.2 |
| Asturias, Principado de | | | | Balears, Illes | | | | |
| General index | 105.7 | 1.3 | 1.9 | 0.2 | 108.5 | 1.8 | -6.2 | -4.5 |
| Consumer goods | 103.5 | 0.0 | 1.1 | 1.4 | 106.5 | 0.0 | 0.2 | -0.3 |
| - Durable consumer goods | 106.9 | 0.0 | 1.0 | 1.4 | 112.2 | -0.1 | 0.6 | 0.6 |
| - Non-durable consumer goods | 103.6 | 0.0 | 1.1 | 1.4 | 105.5 | 0.0 | 0.2 | -0.5 |
| Capital goods | 97.7 | -0.1 | 0.3 | 0.8 | 101.9 | 0.0 | 1.4 | 1.5 |
| Intermediate goods | 106.1 | 1.9 | 13.6 | 8.0 | 111.1 | 0.1 | 2.5 | 3.2 |
| Energy | 108.9 | 1.8 | -9.6 | -9.3 | 110.4 | 3.5 | -11.8 | -8.8 |
| Canarias | | | | Cantabria | | | | |
| General index | 104.4 | 2.2 | -0.1 | -3.2 | 106.1 | -0.2 | -0.3 | -0.5 |
| Consumer goods | 106.9 | -0.2 | -0.4 | -0.6 | 108.2 | 0.1 | 1.3 | 1.8 |
| - Durable consumer goods | 102.8 | 0.0 | 2.6 | 2.6 | 102.9 | -0.3 | 3.7 | 3.5 |
| - Non-durable consumer goods | 106.9 | -0.2 | -0.4 | -0.7 | 109.6 | 0.3 | 0.6 | 1.3 |
| Capital goods | 98.0 | -0.2 | 0.2 | 0.2 | 98.7 | 0.0 | -0.9 | -0.5 |
| Intermediate goods | 111.6 | -0.1 | 0.8 | 0.5 | 102.7 | -1.3 | -0.4 | -2.0 |
| Energy | 106.8 | 3.3 | -0.1 | -4.5 | 115.4 | 1.2 | -3.6 | -2.8 |
| Castilla y León | | | | Castilla-La Mancha | | | | |
| General index | 104.9 | -0.1 | -0.5 | -0.7 | 102.2 | 0.8 | -0.2 | -2.9 |
| Consumer goods | 108.6 | 0.0 | 1.0 | 1.2 | 109.0 | 0.0 | -1.6 | -2.3 |
| - Durable consumer goods | 105.2 | 0.0 | 0.2 | 0.3 | 104.0 | 0.0 | -0.5 | -0.2 |
| - Non-durable consumer goods | 108.7 | -0.1 | 1.0 | 1.3 | 109.3 | 0.0 | -1.7 | -2.4 |
| Capital goods | 101.3 | 0.0 | 0.6 | 0.2 | 102.2 | 0.1 | -0.6 | -0.6 |
| Intermediate goods | 102.3 | -0.6 | -1.9 | -2.4 | 104.7 | 0.2 | -0.4 | -1.9 |
| Energy | 112.7 | 2.0 | -2.4 | -1.8 | 92.6 | 2.6 | 2.2 | -5.2 |
| Cataluña | | | | Comunitat Valenciana | | | | |
| General index | 103.1 | 0.3 | -1.3 | -2.4 | 102.5 | -0.4 | 0.7 | -0.5 |
| Consumer goods | 107.3 | 0.1 | 0.4 | 0.5 | 106.4 | -0.2 | 0.5 | 0.5 |
| - Durable consumer goods | 104.5 | 0.0 | 0.7 | 0.9 | 106.6 | -0.1 | 1.3 | 1.4 |
| - Non-durable consumer goods | 108.3 | 0.1 | 0.4 | 0.4 | 106.4 | -0.2 | 0.3 | 0.4 |
| Capital goods | 101.5 | -0.2 | 0.2 | 0.2 | 102.1 | 0.0 | 0.4 | 0.7 |
| Intermediate goods | 106.6 | -0.2 | 0.3 | -1.7 | 100.6 | 0.1 | 0.0 | -0.8 |
| Energy | 95.7 | 1.9 | -7.1 | -9.3 | 100.2 | -2.5 | 4.1 | -3.3 |

(Conclusion)

4. Indices of Autonomous Communities: general and by economic destination

| | Index | % variation | | | Index | % variation | | |
|------------------------------|-------|---------------------|--------------------|--------------------------|-------|---------------------|--------------------|---------------|
| | | Over previous month | Over last December | Over one year | | Over previous month | Over last December | Over one year |
| Extremadura | | | | Galicia | | | | |
| General index | 106.9 | -0.4 | -0.5 | -1.3 | 101.8 | 0.5 | 0.9 | -1.0 |
| Consumer goods | 104.9 | 0.0 | -0.1 | -0.8 | 104.4 | 0.0 | 0.3 | 0.2 |
| - Durable consumer goods | 103.0 | 0.0 | 1.3 | 1.5 | 100.5 | -0.2 | 1.1 | 1.2 |
| - Non-durable consumer goods | 105.0 | 0.0 | -0.2 | -1.0 | 104.6 | 0.0 | 0.3 | 0.1 |
| Capital goods | 105.7 | -0.4 | 6.7 | 6.7 | 103.0 | 0.0 | 0.1 | 0.1 |
| Intermediate goods | 106.4 | -1.6 | -1.7 | -3.7 | 101.8 | 0.0 | 0.2 | -1.4 |
| Energy | 121.5 | 1.2 | -2.0 | -0.2 | 95.9 | 2.7 | 3.9 | -3.8 |
| Madrid, Comunidad de | | | | Murcia, Región de | | | | |
| General index | 110.2 | 0.0 | -4.1 | -3.8 | 105.9 | 0.4 | 0.4 | -1.3 |
| Consumer goods | 105.1 | -0.1 | -0.5 | 0.0 | 113.1 | -0.9 | 3.3 | 1.8 |
| - Durable consumer goods | 107.3 | -0.1 | 0.7 | 0.7 | 107.8 | 0.0 | 0.5 | 0.5 |
| - Non-durable consumer goods | 104.8 | -0.2 | -0.6 | -0.1 | 113.8 | -1.0 | 3.7 | 2.0 |
| Capital goods | 102.0 | -0.2 | -0.1 | -0.5 | 109.7 | 0.8 | 4.1 | 3.6 |
| Intermediate goods | 108.6 | -0.3 | 1.1 | 1.9 | 104.4 | -0.1 | -1.5 | -1.5 |
| Energy | 112.0 | 0.2 | -8.7 | -8.5 | 99.8 | 2.8 | -2.6 | -6.0 |
| Navarra, C. Foral de | | | | País Vasco | | | | |
| General index | 103.7 | -0.1 | -1.5 | -1.6 | 107.3 | 0.6 | 2.0 | -0.9 |
| Consumer goods | 107.2 | -0.1 | 0.0 | -0.7 | 108.2 | -0.6 | 1.7 | 1.2 |
| - Durable consumer goods | 95.5 | 0.0 | 0.1 | 0.1 | 101.6 | 0.6 | 0.9 | 1.3 |
| - Non-durable consumer goods | 108.2 | -0.1 | 0.0 | -0.7 | 111.8 | -1.0 | 2.0 | 1.1 |
| Capital goods | 100.2 | 0.0 | -1.1 | -0.8 | 114.0 | 0.9 | 2.9 | 1.6 |
| Intermediate goods | 101.9 | -0.8 | -2.0 | -2.1 | 105.8 | 0.2 | 1.2 | 0.0 |
| Energy | 115.7 | 2.2 | -6.7 | -6.0 | 98.5 | 1.6 | 2.6 | -4.6 |
| Rioja, La | | | | | | | | |
| General index | 107.3 | 0.4 | -0.5 | -0.9 | | | | |
| Consumer goods | 111.3 | 0.4 | 0.8 | 0.5 | | | | |
| - Durable consumer goods | 99.1 | 0.0 | -1.6 | -1.3 | | | | |
| - Non-durable consumer goods | 112.2 | 0.4 | 0.9 | 0.6 | | | | |
| Capital goods | 99.6 | 0.0 | -0.1 | -0.1 | | | | |
| Intermediate goods | 109.4 | 0.2 | -0.7 | -0.6 | | | | |
| Energy | 100.1 | 1.3 | -5.3 | -6.7 | | | | |

For further information see INEbase - www.ine.es/en/ All press releases at: www.ine.es/en/prensa/prensa_en.htm

Press Office: Telephone numbers: 91 583 93 63 / 94 08 – Fax: 91 583 90 87 - gprensa@ine.es

Information Area: Telephone number: 91 583 91 00 – Fax: 91 583 91 58 – www.ine.es/infoine