

**Industrial Price Index (IPRI). Base 2010**  
November 2015. *Provisional data*

**The annual rate of the Industrial Price Index stands at –2.6%,  
one tenth higher than that recorded in October**

**The monthly variation rate of industrial prices is –0.2%**

**Annual evolution of industrial prices**

The annual rate of the General Industrial Price Index (IPRI) stood at –2.6% in November, one tenth higher than that recorded in October.

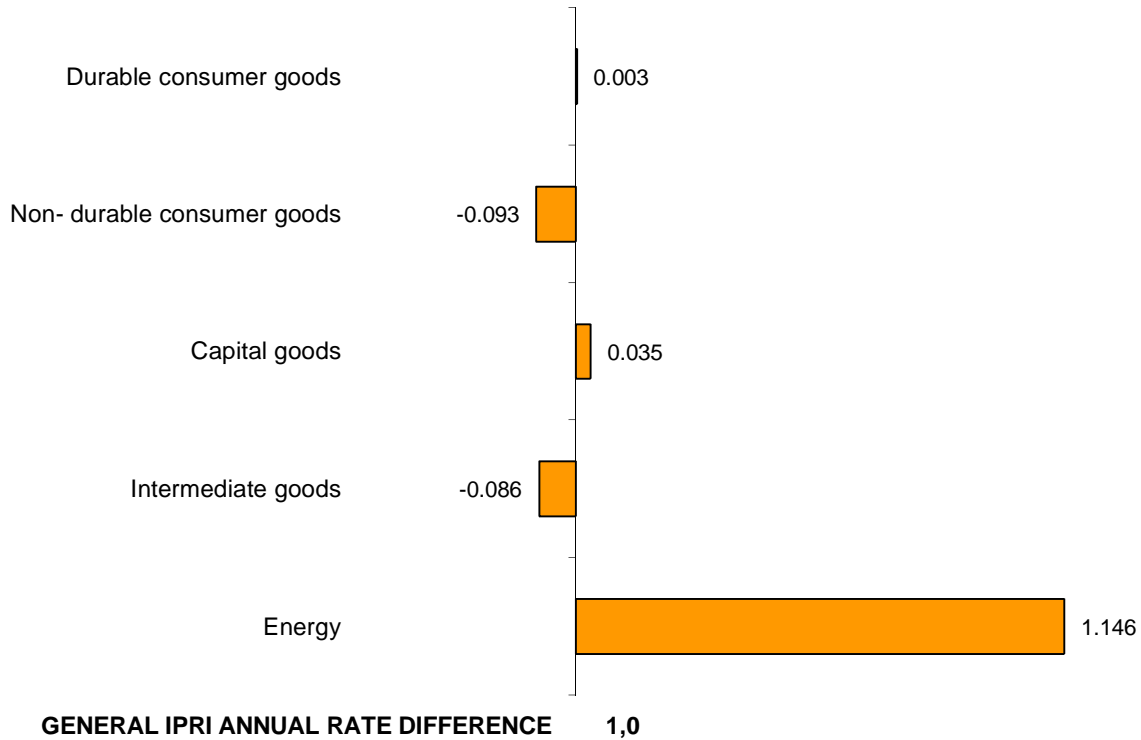
By economic destination of the goods, the industrial sector that influenced the most this increase was:

- **Energy**, whose annual rate increased 4 points up to –9.4%. This behaviour was due to the stability in the prices of *Manufacture of refined petroleum products* and of *Electric power generation, transmission and distribution*, as compared with the decreases registered in November 2014.
- **Capital goods**, whose annual rate increased 3 tenths up to 1.1%, which is the highest rate since October 2011. This variation is due to the increase of prices in *Repair of metallic products, machinery and equipment*, which decreased the previous year.

Although the annual rate of the general IPRI increased, it is worth noting the decrease of:

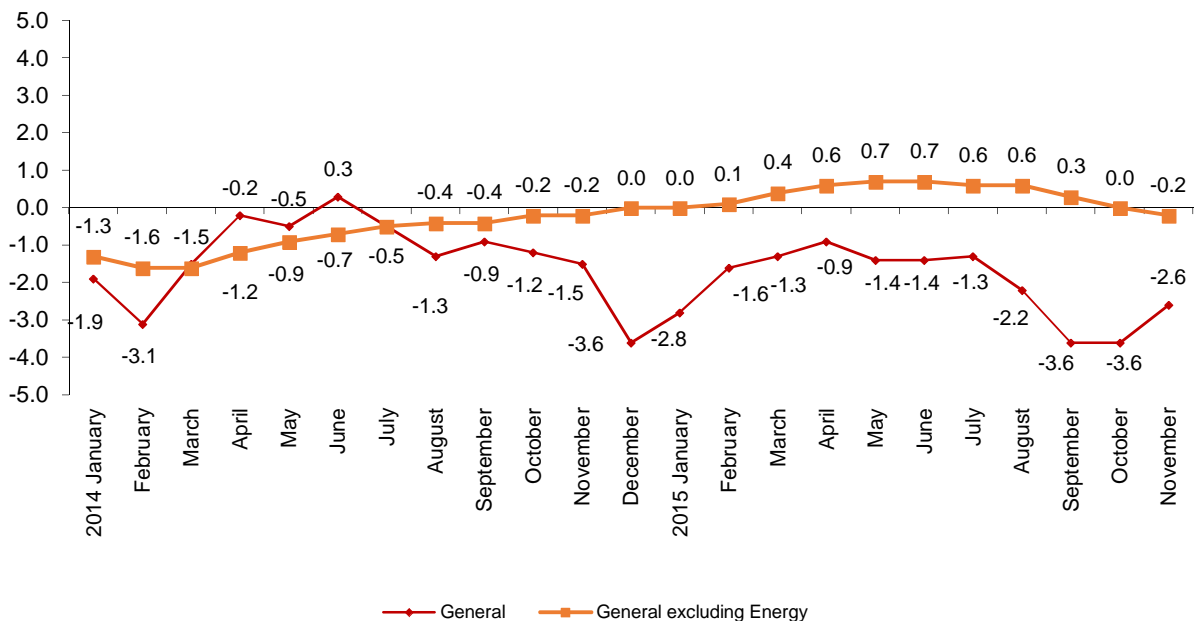
- **Non-durable consumer goods**, whose annual variation decreased four tenths standing at 0.9%, due to the decrease in the prices of *Manufacture of vegetable and animal oils and fats*, as compared with the increase of November 2014.
- **Intermediate goods**, whose annual variation decreased two tenths as compared to October, standing at –1.7%, due to the decrease in the prices of *Manufacture of basic iron and steel and of ferro-alloys* and of *Manufacture of basic chemicals, fertilisers and nitrogen compounds, plastics and synthetic rubber in primary forms*, lower than that registered in the previous year. In fact, this activity reached its lower rate since December 2009.

**Influence of industrial sectors in the IPRI annual rate**



The annual variation rate of the **general index excluding Energy** decreased two tenths up to **-0.2%**, nearly two points and a half over that of the general IPRI.

**IPRI annual evolution**  
**General index and general excluding Energy**



### Monthly evolution of industrial prices

In November, the monthly variation of the general IPRI was **-0.2%**.

By economic destination of the goods, the industrial sectors that had negative monthly contribution to the general index were:

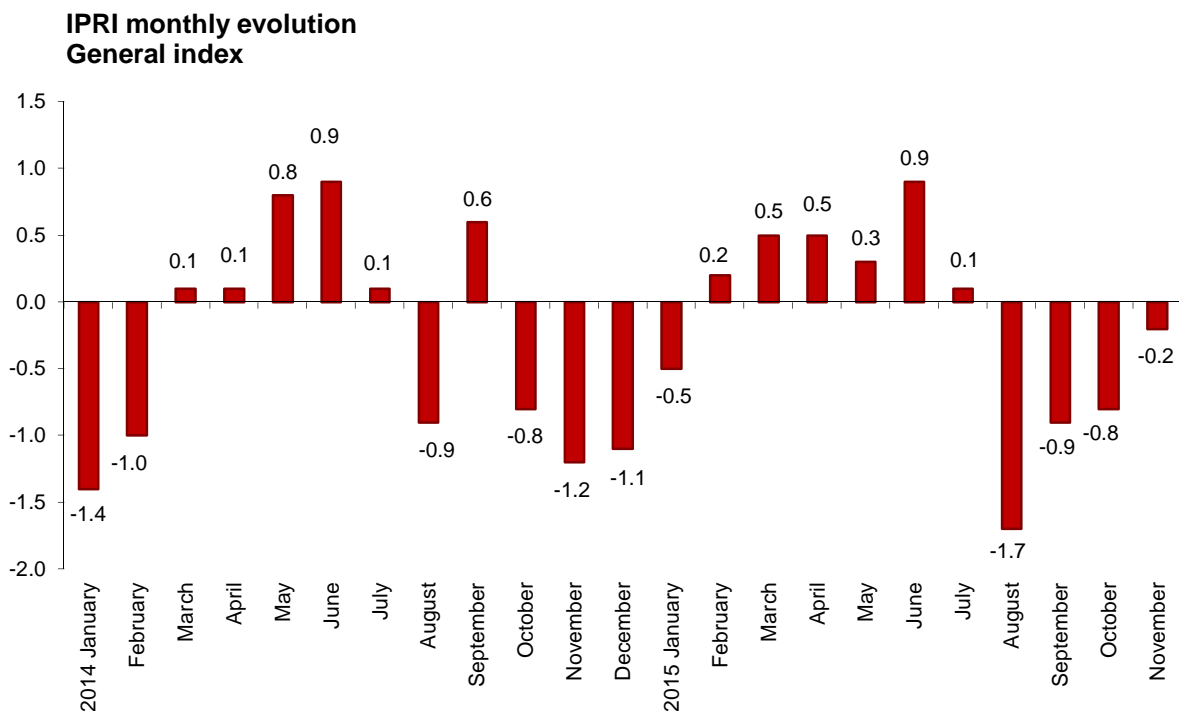
- **Intermediate goods**, with a monthly variation of **-0.6%** and an effect of **-0.172**. This was mainly due to the decrease in prices of *Manufacture of basic iron and steel and of ferro-alloys* and *Manufacture of basic chemicals, fertilisers and nitrogen compounds, plastics and synthetic rubber in primary forms*.

- **Non-durable consumer goods**, whose rate of **-0.3%** had a contribution of **-0.080**. This was mainly due to the decrease in prices of *Manufacture of vegetable and animal oils and fats* and *Processing and preserving of meat and production of meat products*.

The sectors with a positive contribution to the general index were:

- **Energy**, with a rate of **0.3%** mainly due to the increase of prices in *Electric power generation, transmission and distribution* and, in a lower level, *Manufacture of gas; distribution of gaseous fuels through mains*. Its contribution in the general IPRI was **0.080**.

- **Capital goods**, whose rate stood at **0.1%**, due to the increase of prices in *Repair of metallic products, machinery and equipment*. This industry had a contribution to the general index of 0.021.



A more detailed analysis showed the activities that most affected the monthly rate of the IPRI in the month of November.

**Activities with high positive contribution in IPRI monthly rate**

	Monthly rate (%)	Contribution
<b>Grupo CNAE-09</b>		
Electric power generation, transmission and distribution	0,4	0,058
Graphic arts and related services	1,6	0,028
Manufacture of gas; distribution of gaseous fuels through mains	0,5	0,017
Repair of metallic products, machinery and equipment	1,3	0,016

**Activities with the most negative contribution in IPRI monthly rate**

	Monthly rate (%)	Contribution
<b>Grupo CNAE-09</b>		
Manufacture of basic iron and steel and of ferro-alloys	-5,7	-0,089
Manufacture of vegetable and animal oils and fats	-4,4	-0,089
Processing and preserving of meat and production of meat products	-1,0	-0,044
Manufacture of basic chemicals, fertilisers and nitrogen compounds, plastics and synthetic rubber in primary forms	-1,1	-0,033
Treatment and coating of metals; mechanical engineering for others	-1,1	-0,014
Forging, stamping and roll forming of metal; powder metallurgy	-1,3	-0,013
Production of precious metals and other non-ferrous metals	-1,0	-0,012

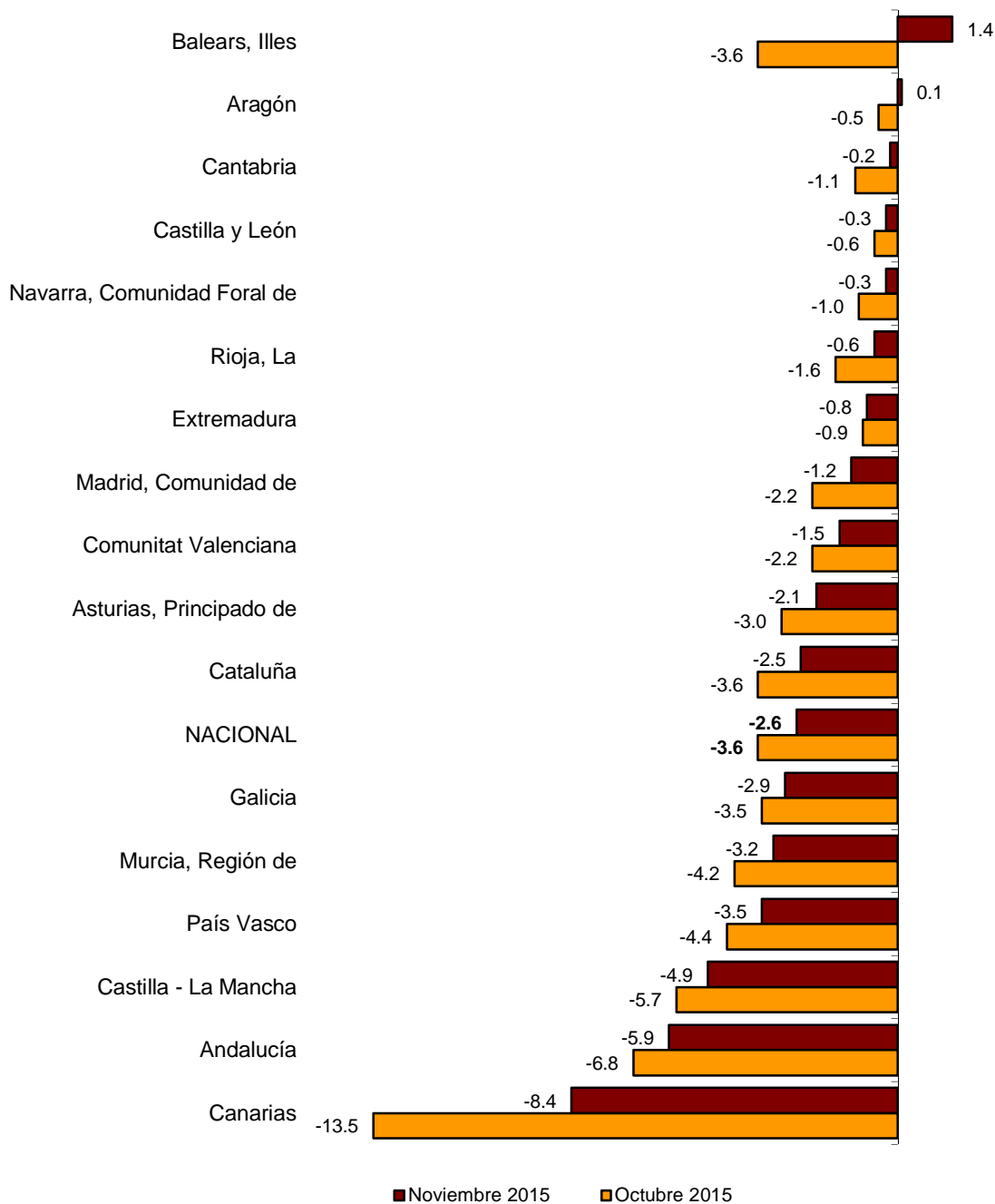
26 October 2015

**Results by Autonomous Community. Annual variation rates**

The annual rate of the IPRI increased in all Autonomous Communities. The greatest increases were recorded in Canarias (–8.4%), and Illes Balears (1.4%), whose rates increased 5.1 and 5.0 points, respectively.

In turn, Extremadura registered the lowest increase in its annual rate, which stood at –0.8%, that is, one tenth more than in October.

**IPRI annual variation rates**  
Index by Autonomous Communities



## Industrial Prices Index. Base 2010 November 2015

Provisional data

### 1. National indices: general and by economic destination of the goods

	Index	% variation			Effect	
		Over previous month	Over last December	Over one year	Over previous month	Over last December
General index	106.3	-0.2	-1.5	-2.6		
Consumer goods	108.0	-0.3	0.7	0.9	-0.079	0.203
- Durable consumer goods	103.0	0.1	0.3	0.3	0.002	0.006
- Non-durable consumer goods	108.8	-0.3	0.7	0.9	-0.080	0.197
Capital goods	102.8	0.1	0.9	1.1	0.021	0.140
Intermediate goods	104.4	-0.6	-1.4	-1.7	-0.172	-0.419
Energy	107.4	0.3	-5.6	-9.4	0.080	-1.468

### 2. Variation rates in the last 12 months. General Index

Period	Index	% variation		
		Over previous month	Over last December	Over one year
2014 November	109.1	-1.2	-2.6	-1.5
December	107.9	-1.1	-3.6	-3.6
2015 January	107.4	-0.5	-0.5	-2.8
February	107.7	0.2	-0.2	-1.6
March	108.1	0.5	0.2	-1.3
April	108.6	0.5	0.7	-0.9
May	109.0	0.3	1.0	-1.4
June	110.0	0.9	1.9	-1.4
July	110.1	0.1	2.0	-1.3
August	108.2	-1.7	0.3	-2.2
September	107.2	-0.9	-0.6	-3.6
October *	106.4	-0.8	-1.4	-3.6
November	106.3	-0.2	-1.5	-2.6

\* Revised data

### 3. Total industry and classification by activity (CNAE 2009)

	Index	Over previous month		Over last December		Over one year
		% Variation	Effect	% Variation	Effect	% Variation
<b>TOTAL INDUSTRY</b>	106.3	-0.2		-1.5		-2.6
<b>B. Mining and quarrying</b>	101.5	-0.4	-0.004	-0.7	-0.007	-1.4
Mining of coal and lignite	105.4	-0.9	-0.001	-3.7	-0.005	-5.0
Mining of metal ores	81.5	-4.1	-0.002	-9.5	-0.005	-10.4
Other mining and quarrying	102.2	0.0	0.000	0.5	0.004	0.0
<b>C. Manufacturing</b>	104.0	-0.3	-0.224	-1.3	-1.034	-2.8
Manufacture of food products	112.1	-0.7	-0.120	0.5	0.093	0.8
Manufacture of beverages	109.0	0.2	0.007	0.7	0.026	0.8
Manufacture of tobacco products	120.4	0.0	0.000	1.7	0.004	1.7
Manufacture of textiles	106.1	-0.1	-0.001	0.4	0.003	0.4
Manufacture of wearing apparel	99.8	0.1	0.002	0.7	0.009	0.8
Manufacture of leather and related products	107.0	0.2	0.001	0.4	0.002	0.4
Manufacture of wood and of products of wood and cork, except furniture; manufacture of articles of straw and plaiting materials	105.8	0.1	0.001	1.3	0.019	0.8
Manufacture of paper and paper products	106.7	0.2	0.005	2.4	0.055	2.5
Printing and reproduction of recorded media	108.5	1.5	0.028	1.9	0.034	2.6
Manufacture of coke and refined petroleum products	84.4	0.1	0.004	-12.6	-0.960	-26.3
Manufacture of chemicals and chemical products	108.4	-0.7	-0.039	-1.4	-0.080	-2.9
Manufacture of basic pharmaceutical products	100.7	0.1	0.003	0.7	0.016	0.8
Manufacture of rubber and plastic products	108.4	-0.2	-0.005	0.2	0.005	0.1
Manufacture of other non-metallic mineral products	102.0	0.1	0.007	-0.2	-0.007	-0.3
Manufacture of basic metals	92.5	-3.0	-0.107	-9.3	-0.354	-9.6
Manufacture of fabricated metal products, except machinery and equipment	100.8	-0.5	-0.036	-0.7	-0.048	-0.6
Manufacture of computer, electronic and optical products	86.9	0.1	0.001	-0.1	-0.001	-0.2
Manufacture of electrical equipment	105.2	0.1	0.002	-0.4	-0.010	-0.6
Manufacture of machinery and equipment n.e.c.	103.7	0.1	0.004	0.5	0.012	0.4
Manufacture of motor vehicles, trailers and semi-trailers	101.3	0.0	0.002	0.1	0.007	0.1
Manufacture of other transport equipment	107.7	-0.1	-0.002	6.5	0.107	6.5
Manufacture of furniture	104.2	0.0	0.000	0.6	0.009	0.5
Other manufacturing	106.1	0.2	0.001	1.3	0.009	1.8
Repair and installation of machinery and equipment	101.4	1.2	0.019	0.9	0.014	1.7
<b>D. Electricity and gas</b>	117.5	0.4	0.075	-3.0	-0.515	-2.0
<b>E. Water supply</b>	116.9	0.1	0.002	0.9	0.012	1.1

#### 4. Indices of Autonomous Communities: general and by economic destination (Continues)

	Index	% variation			Index	% variation		
		Over previous month	Over last December	Over one year		Over previous month	Over last December	Over one year
<b>Andalucía</b>				<b>Aragón</b>				
General index	106.9	-0.6	-2.5	-5.9	106.8	-0.2	0.1	0.1
Consumer goods	118.3	-2.0	3.9	4.7	102.0	-0.2	-0.7	-0.9
- Durable consumer goods	105.2	-0.2	0.8	1.0	101.3	0.2	0.0	0.0
- Non-durable consumer goods	119.2	-2.2	4.1	4.9	102.2	-0.3	-1.1	-1.3
Capital goods	102.8	0.2	0.7	0.9	104.1	0.0	-0.5	-0.2
Intermediate goods	103.5	-0.2	-3.5	-5.2	109.4	-0.7	0.7	0.5
Energy	98.6	0.6	-8.6	-17.9	113.2	0.5	0.7	0.9
<b>Asturias, Principado de</b>				<b>Balears, Illes</b>				
General index	103.4	-1.2	-2.6	-2.1	114.5	1.1	0.3	1.4
Consumer goods	102.3	0.1	-1.2	-1.3	106.6	-0.3	0.4	0.6
- Durable consumer goods	106.3	0.7	2.0	2.0	111.5	0.0	0.9	1.1
- Non-durable consumer goods	102.4	0.1	-1.4	-1.5	105.7	-0.3	0.3	0.5
Capital goods	96.7	0.3	1.0	1.1	100.4	0.1	0.0	0.0
Intermediate goods	94.3	-1.9	-4.6	-4.0	107.6	-0.6	-0.5	-0.7
Energy	118.4	-1.5	-2.3	-1.5	122.9	2.3	0.5	2.5
<b>Canarias</b>				<b>Cantabria</b>				
General index	107.5	0.3	-3.8	-8.4	106.7	0.5	-0.2	-0.2
Consumer goods	107.8	0.1	1.4	1.8	107.1	0.4	1.8	1.7
- Durable consumer goods	100.2	0.0	0.4	0.4	99.4	0.1	-2.6	-2.5
- Non-durable consumer goods	107.9	0.1	1.4	1.8	109.3	0.5	3.1	2.9
Capital goods	97.8	0.1	0.1	0.2	99.4	0.0	0.2	-1.3
Intermediate goods	111.7	0.3	-0.3	-0.7	104.2	1.0	-3.9	-3.7
Energy	111.1	0.5	-5.6	-12.4	118.6	0.3	3.6	4.5
<b>Castilla y León</b>				<b>Castilla-La Mancha</b>				
General index	105.2	-0.2	-0.3	-0.3	104.1	-0.3	-2.3	-4.9
Consumer goods	107.2	0.1	-0.2	-0.2	110.9	-0.5	-0.2	-0.2
- Durable consumer goods	104.8	0.0	-0.3	-0.3	104.5	0.0	1.0	1.0
- Non-durable consumer goods	107.3	0.1	-0.2	-0.2	111.2	-0.5	-0.2	-0.3
Capital goods	100.8	0.0	-0.4	-0.4	102.8	-0.1	-1.1	0.0
Intermediate goods	104.0	-0.5	-0.3	-0.4	105.6	-0.4	-1.0	-1.4
Energy	114.7	0.5	-0.1	-0.5	96.0	0.0	-6.5	-15.0
<b>Cataluña</b>				<b>Comunitat Valenciana</b>				
General index	104.6	-0.1	-2.0	-2.5	102.6	0.0	-0.4	-1.5
Consumer goods	106.6	-0.1	-0.1	0.0	106.1	0.3	1.5	1.5
- Durable consumer goods	103.6	0.0	0.8	0.6	105.3	0.1	0.1	0.1
- Non-durable consumer goods	107.7	-0.1	-0.1	-0.1	106.2	0.4	1.7	1.7
Capital goods	101.7	0.4	0.7	0.9	101.7	0.4	0.9	0.9
Intermediate goods	106.5	-0.8	-1.8	-2.5	100.7	-0.5	-0.8	-0.8
Energy	103.4	0.4	-6.6	-8.1	102.4	0.4	-4.5	-12.7



#### 4. Indices of Autonomous Communities: general and by economic destination (Conclusion)

	Index			% variation			Index	% variation		
	Over previous month	Over last December	Over one year	Over previous month	Over last December	Over one year				
<b>Extremadura</b>										
General index	106.2	-0.8	-1.1	-0.8	102.4	-0.2	-1.1	-2.9		
Consumer goods	104.3	-0.6	0.2	0.2	104.5	0.3	1.3	1.3		
- Durable consumer goods	103.2	1.7	0.2	1.4	99.5	-0.1	0.4	0.3		
- Non-durable consumer goods	104.3	-0.8	0.2	0.1	104.7	0.3	1.3	1.4		
Capital goods	99.0	-0.5	0.5	0.5	102.8	0.0	0.0	0.2		
Intermediate goods	106.3	-1.6	-3.8	-3.2	102.5	-0.9	-1.7	-2.3		
Energy	122.4	1.0	0.6	1.3	97.8	-0.2	-5.2	-14.1		
<b>Galicia</b>										
General index	106.2	-0.8	-1.1	-0.8	102.4	-0.2	-1.1	-2.9		
Consumer goods	104.3	-0.6	0.2	0.2	104.5	0.3	1.3	1.3		
- Durable consumer goods	103.2	1.7	0.2	1.4	99.5	-0.1	0.4	0.3		
- Non-durable consumer goods	104.3	-0.8	0.2	0.1	104.7	0.3	1.3	1.4		
Capital goods	99.0	-0.5	0.5	0.5	102.8	0.0	0.0	0.2		
Intermediate goods	106.3	-1.6	-3.8	-3.2	102.5	-0.9	-1.7	-2.3		
Energy	122.4	1.0	0.6	1.3	97.8	-0.2	-5.2	-14.1		
<b>Madrid, Comunidad de</b>										
General index	113.9	0.2	-2.3	-1.2	106.4	-0.5	-1.5	-3.2		
Consumer goods	105.2	0.3	1.4	1.9	110.1	-0.8	-0.4	-0.5		
- Durable consumer goods	106.6	0.0	1.1	1.0	107.2	0.0	1.0	0.9		
- Non-durable consumer goods	105.0	0.3	1.5	2.0	110.5	-0.9	-0.6	-0.7		
Capital goods	102.1	0.0	0.4	0.4	106.3	0.3	-0.8	-0.8		
Intermediate goods	107.2	0.3	0.3	0.7	105.5	-1.1	0.3	0.1		
Energy	120.7	0.2	-5.6	-3.8	105.0	0.4	-4.6	-10.2		
<b>Murcia, Región de</b>										
General index	113.9	0.2	-2.3	-1.2	106.4	-0.5	-1.5	-3.2		
Consumer goods	105.2	0.3	1.4	1.9	110.1	-0.8	-0.4	-0.5		
- Durable consumer goods	106.6	0.0	1.1	1.0	107.2	0.0	1.0	0.9		
- Non-durable consumer goods	105.0	0.3	1.5	2.0	110.5	-0.9	-0.6	-0.7		
Capital goods	102.1	0.0	0.4	0.4	106.3	0.3	-0.8	-0.8		
Intermediate goods	107.2	0.3	0.3	0.7	105.5	-1.1	0.3	0.1		
Energy	120.7	0.2	-5.6	-3.8	105.0	0.4	-4.6	-10.2		
<b>Navarra, C. Foral de</b>										
General index	105.2	0.2	-0.2	-0.3	107.3	-0.1	-1.2	-3.5		
Consumer goods	107.4	-0.3	-0.8	-1.0	106.7	-0.4	-0.5	-0.4		
- Durable consumer goods	95.4	0.0	-5.4	-5.4	100.3	0.2	0.1	0.2		
- Non-durable consumer goods	108.5	-0.4	-0.4	-0.6	110.2	-0.5	-0.7	-0.6		
Capital goods	101.0	0.0	0.0	0.1	110.9	-0.1	6.4	6.4		
Intermediate goods	104.4	0.9	0.3	0.4	104.7	-0.6	-1.9	-1.8		
Energy	123.0	0.8	-1.3	-2.3	102.4	0.6	-5.1	-13.1		
<b>País Vasco</b>										
General index	105.2	0.2	-0.2	-0.3	107.3	-0.1	-1.2	-3.5		
Consumer goods	107.4	-0.3	-0.8	-1.0	106.7	-0.4	-0.5	-0.4		
- Durable consumer goods	95.4	0.0	-5.4	-5.4	100.3	0.2	0.1	0.2		
- Non-durable consumer goods	108.5	-0.4	-0.4	-0.6	110.2	-0.5	-0.7	-0.6		
Capital goods	101.0	0.0	0.0	0.1	110.9	-0.1	6.4	6.4		
Intermediate goods	104.4	0.9	0.3	0.4	104.7	-0.6	-1.9	-1.8		
Energy	123.0	0.8	-1.3	-2.3	102.4	0.6	-5.1	-13.1		
<b>Rioja, La</b>										
General index	107.9	0.2	0.2	-0.6	107.9	0.2	0.2	-0.6		
Consumer goods	110.5	0.5	1.2	1.3	110.5	0.5	1.2	1.3		
- Durable consumer goods	100.6	0.0	1.7	2.5	100.6	0.0	1.7	2.5		
- Non-durable consumer goods	111.3	0.5	1.1	1.2	111.3	0.5	1.1	1.2		
Capital goods	99.7	0.0	-0.4	-0.4	99.7	0.0	-0.4	-0.4		
Intermediate goods	110.3	0.1	1.1	0.3	110.3	0.1	1.1	0.3		
Energy	105.5	-0.8	-4.0	-8.4	105.5	-0.8	-4.0	-8.4		

For further information see INEbase - [www.ine.es/en/](http://www.ine.es/en/) All press releases at: [www.ine.es/en/prensa/prensa\\_en.htm](http://www.ine.es/en/prensa/prensa_en.htm)

Press Office: Telephone numbers: 91 583 93 63 / 94 08 – Fax: 91 583 90 87 - [gprensa@ine.es](mailto:gprensa@ine.es)

Information Area: Telephone number: 91 583 91 00 – Fax: 91 583 91 58 – [www.ine.es/infoine](http://www.ine.es/infoine)