

9 October 2014

Mercantile Companies Statistics

August 2014. *Provisional data*

5,104 mercantile companies are created in August, 10.2% less than in the same month of the previous year, and 1,120 are dissolved, 14.0% less

The Autonomous Communities with the greatest business dynamism¹ are La Rioja (14.8%), País Vasco (9.2%) and Illes Balears (5.7%)

5,104 mercantile companies were created in August, that is, 10.2% less than in the same month of 2013. The capital subscribed for their constitution exceeded 262 million euros, representing a decrease of 62.3%. The average capital subscribed (51,525 euros) decreased 58.1% in its annual rate.

On the other hand, 1,968 mercantile companies increased their capital in August, 9.6% less than in the same month of 2013. The capital subscribed in the increases registered a decrease of 56.3%, and exceeded 1,027 million euros. The average capital subscribed in these transactions (522,079 euros) decreased 51.7% in its annual rate.

The number of companies dissolved in August was 1,120, indicating a decrease of 14.0%, as compared with the same month of the previous year. Among these, 68.9% did so voluntarily, 10.2% due to mergers and the remaining 20.9% for other reasons.

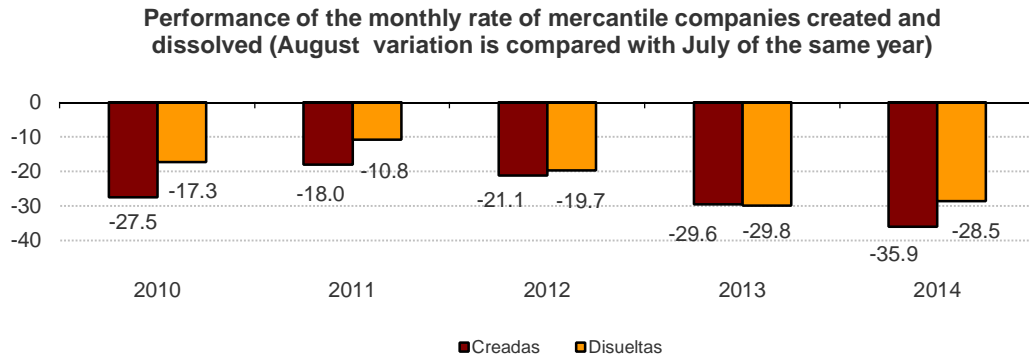
Mercantile companies created, increasing their capital and dissolved. August 2014

	Total	% Variation		
		Monthly	Annual	Annual accumulated
Mercantile companies created				
Number	5,104	-35.9	-10.2	-0.5
Capital subscribed (thousands of euros)	262,986	-30.3	-62.3	-20.0
Average capital subscribed (euros)	51,525	8.7	-58.1	-19.6
Mercantile companies increasing their capital				
Number	1,968	-25.8	-9.6	-6.1
Capital subscribed (thousands of euros)	1,027,452	-72.3	-56.3	-49.2
Average capital subscribed (euros)	522,079	-62.6	-51.7	-45.9
Mercantile companies dissolved				
Number	1,120	-28.5	-14.0	-14.2
- Voluntary	772	-17.9	-17.0	-17.7
- Merger	114	-19.1	28.1	-3.6
- Other	234	-51.9	-17.6	-6.0

¹ Business dynamism: Performance of the number of mercantile companies, as the annual variation rate of the incorporation of mercantile companies.

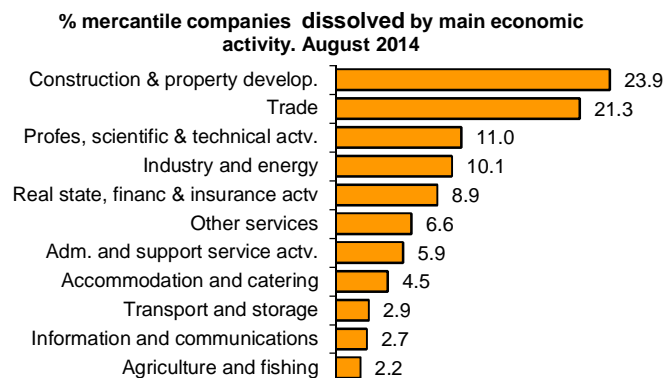
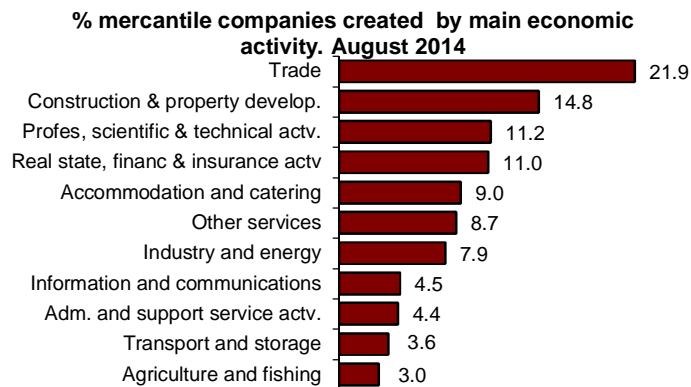
Performance of the monthly rate

In order to contribute to the analysis and interpretation of the data, the following chart shows the variation in the number of mercantile companies created and dissolved between July and August in the last five years. In 2014, the monthly variation of the number of companies created was -35.9% and that of the companies dissolved was -28.5%.



Results by main economic activity

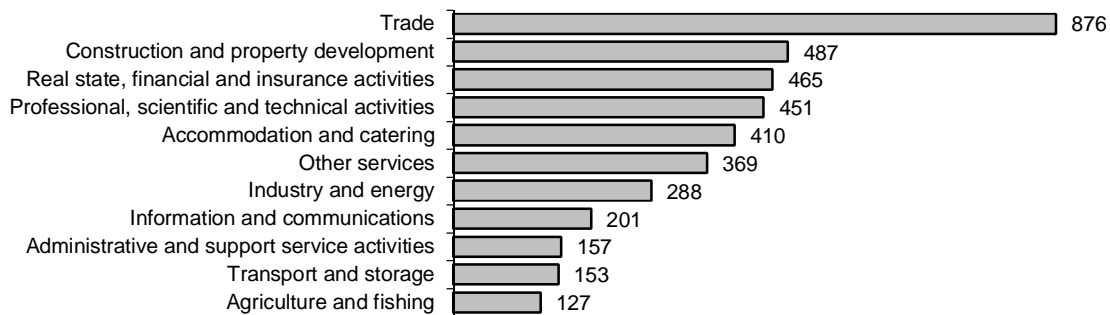
21.9% of the mercantile companies created in the month of August corresponded to *Trade* and 14.8% to *Construction*. Regarding the dissolved companies, 23.9% corresponded to *Construction* and 21.3% to *Trade*.



In August 2014, the economic activity with the greatest net balance of all the mercantile companies created was *Trade*, with 876 new companies.

In turn, *Agriculture and fishing* registered the lowest net balance, with 127 companies created.

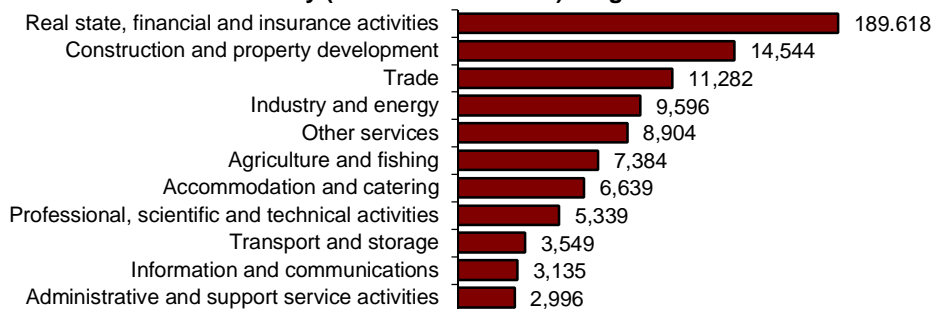
Net balance of mercantile companies created by main economic activity. August 2014



The economic activity with the greatest capital subscribed of the mercantile companies created was *Real State, financial and insurance activities*, with 189.62 million euros.

In turn, *Administrative and support service activities* presented the lowest capital subscribed, with 3.00 million euros.

Capital subscribed of mercantile companies created by main economic activity (thousands of euros). August 2014



Results by Autonomous Cities and Communities

The Autonomous Communities with the greatest number of mercantile companies created in August were Cataluña (1,059), Comunidad de Madrid (920) and Andalucía (802).

Conversely, the Autonomous Communities where less mercantile companies were created were La Rioja (31), Comunidad Foral de Navarra (43) and Cantabria (52).

Regarding the dissolved mercantile companies, the Autonomous Communities that presented the highest number of dissolutions were Comunidad de Madrid (268), Andalucía (176) and Cataluña (121).

In turn, the Autonomous Communities with the lowest number of dissolutions were Comunidad Foral de Navarra (four) and Cantabria (seven).

Mercantile companies created and dissolved by Autonomous Cities and Communities. August 2014

	Created		Dissolved	
	Number	% Annual variation	Number	% Annual variation
TOTAL	5,104	-10.2	1,120	-14.0
Andalucía	802	-9.6	176	-16.2
Aragón	104	-25.7	53	32.5
Asturias, Principado de	88	-1.1	26	0.0
Balears, Illes	167	5.7	41	-6.8
Canarias	243	-5.4	51	-25.0
Cantabria	52	-1.9	7	-63.2
Castilla y León	179	-11.4	55	-8.3
Castilla - La Mancha	150	-17.6	21	-30.0
Cataluña	1,059	-8.9	121	-36.6
Comunitat Valenciana	601	-12.6	114	-2.6
Extremadura	64	-1.5	13	-23.5
Galicia	262	-3.7	81	-9.0
Madrid, Comunidad de	920	-16.7	268	-12.7
Murcia, Región de	147	-10.4	29	107.1
Navarra, Comunidad Foral de	43	-24.6	4	0.0
País Vasco	178	9.2	48	-9.4
Rioja, La	31	14.8	8	-38.5
Ceuta	4	-33.3	0	-
Melilla	10	100.0	0	-

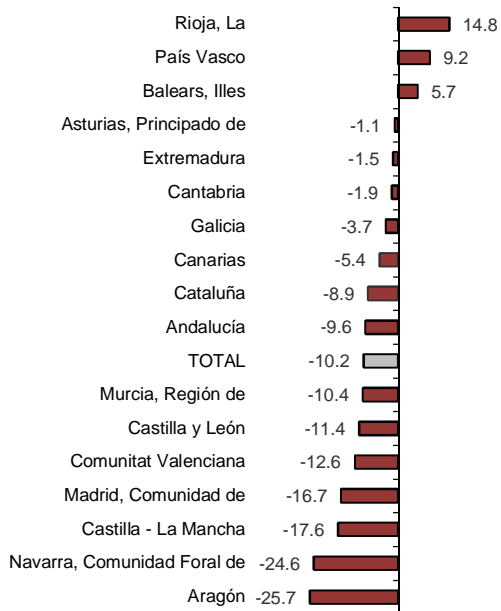
In terms of annual rates of the number of mercantile companies created, La Rioja (14.8%), País Vasco (9.2%) and Illes Balears (5.7%) were the only Autonomous Communities that recorded positive rates.

In turn, Aragón (-25.7%), Comunidad Foral de Navarra (-24.6%) and Castilla-La Mancha (-17.6%) registered the greatest decreases.

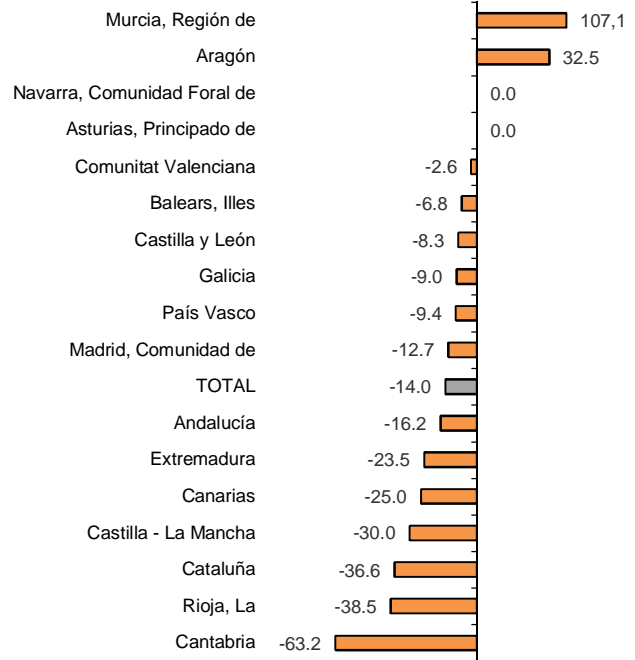
Regarding the mercantile dissolved companies, Región de Murcia (107.1%) and Aragón (32.5%) were the only ones to register positive rates..

In turn, the communities registering the greatest decreases in mercantile companies dissolved were Cantabria (-63.2%), La Rioja (-38.5%) and Cataluña (-36.6%).

Annual variation in mercantile companies created by Autonomous Communities. August 2014



Annual variation in mercantile companies dissolved by Autonomous Communities. August 2014



Mercantile Companies Statistics August 2014. Provisional data

MC 1. Mercantile companies created

Capital in thousands of euros

	General total*			Public limited company			Private limited company		
	Number	Capital		Number	Capital		Number	Capital	
		Subscribed	Disbursed		Subscribed	Disbursed		Subscribed	Disbursed
TOTAL	5,104	262,986	243,981	41	71,983	52,978	5,062	190,993	190,993
Andalucía	802	20,758	20,713	3	420	375	799	20,338	20,338
Aragón	104	1,326	1,326	0	0	0	104	1,326	1,326
Asturias, Principado de	88	2,099	2,099	0	0	0	88	2,099	2,099
Balears, Illes	167	3,677	3,677	0	0	0	167	3,677	3,677
Canarias	243	4,941	4,941	2	560	560	241	4,381	4,381
Cantabria	52	32,818	32,818	0	0	0	52	32,818	32,818
Castilla y León	179	3,501	3,501	0	0	0	179	3,501	3,501
Castilla - La Mancha	150	3,218	3,218	0	0	0	150	3,218	3,218
Cataluña	1,059	44,878	44,878	6	5,982	5,982	1,053	38,896	38,896
Comunitat Valenciana	601	13,030	13,030	3	370	370	598	12,660	12,660
Extremadura	64	2,099	2,099	0	0	0	64	2,099	2,099
Galicia	262	4,951	4,906	2	120	75	260	4,831	4,831
Madrid, Comunidad de	920	117,406	98,491	23	63,431	44,516	896	53,965	53,965
Murcia, Región de	147	2,053	2,053	0	0	0	147	2,053	2,053
Navarra, Comunidad Foral de	43	1,248	1,248	1	100	100	42	1,148	1,148
País Vasco	178	3,379	3,379	0	0	0	178	3,379	3,379
Rioja, La	31	1,138	1,138	1	1,000	1,000	30	138	138
Ceuta	4	418	418	0	0	0	4	418	418
Melilla	10	48	48	0	0	0	10	48	48

MC 2. Mercantile companies that increase capital and are dissolved

Capital in thousands of euros

	Increase capital						Dissolved			
	General total*		Public limited companies		Private limited companies		Total	Voluntary	Merged	Other
	Number	Capital	Number	Capital	Number	Capital	Number	Number	Number	Number
TOTAL	1,968	1,027,452	168	348,710	1,800	678,742	1,120	772	114	234
Andalucía	245	84,741	10	17,909	235	66,833	176	135	11	30
Aragón	55	18,449	2	510	53	17,939	53	37	6	10
Asturias, Principado de	30	11,492	3	398	27	11,094	26	17	2	7
Balears, Illes	74	45,938	1	1,000	73	44,938	41	27	6	8
Canarias	79	33,354	6	18,530	73	14,823	51	41	6	4
Cantabria	7	1,787	2	935	5	852	7	5	0	2
Castilla y León	87	22,609	5	1,248	82	21,361	55	43	4	8
Castilla - La Mancha	70	23,745	5	749	65	22,996	21	10	1	10
Cataluña	438	172,592	41	44,957	397	127,635	121	77	6	38
Comunitat Valenciana	164	36,499	11	8,442	153	28,058	114	66	10	38
Extremadura	18	4,557	1	329	17	4,228	13	12	0	1
Galicia	114	96,228	8	7,790	106	88,437	81	54	7	20
Madrid, Comunidad de	416	371,154	56	202,990	360	168,164	268	199	52	17
Murcia, Región de	69	32,948	2	803	67	32,146	29	11	1	17
Navarra, Comunidad Foral de	21	13,179	0	0	21	13,179	4	1	1	2
País Vasco	64	52,990	12	41,474	52	11,515	48	29	1	18
Rioja, La	14	3,413	3	645	11	2,768	8	7	0	1
Ceuta	1	1	0	0	1	1	3	0	0	3
Melilla	2	1,776	0	0	2	1,776	1	1	0	0

* The general total includes collective societies and partnership companies

August 2014. Provisional data

MC 3. Mercantile companies that disburse installment payments on subscribed shares and companies that reduce capital

Capital in thousands of euros

	Disburs. of install. paym. on sub. shares		Reduce capital	
	Number	Disbursed capital	Number	Subscribed capital
TOTAL	26	25,196	451	1,302,156
Andalucía	5	13,254	54	186,134
Aragón	1	341	13	52,312
Asturias, Principado de	2	83	11	3,544
Balears, Illes	0	0	15	73,751
Canarias	0	0	16	9,370
Cantabria	0	0	6	2,438
Castilla y León	0	0	19	4,734
Castilla - La Mancha	1	45	12	2,610
Cataluña	4	2,148	111	139,439
Comunitat Valenciana	2	7,500	29	21,450
Extremadura	0	0	3	2,150
Galicia	1	36	20	218,736
Madrid, Comunidad de	8	1,432	95	510,603
Murcia, Región de	0	0	12	20,925
Navarra, Comunidad Foral de	1	287	4	7,356
País Vasco	1	70	27	44,981
Rioja, La	0	0	4	1,624
Ceuta	0	0	0	0
Melilla	-	-	-	-

MC 4. Mercantile companies created by type of company

Capital in thousands of euros

	Total		Mercantile companies		Public limited labour companies		Special companies and other agencies	
	Number	Capital	Number	Capital	Number	Capital	Number	Capital
2013 August	5,700	698,420	5,681	698,273	1	91	18	56
September	6,312	590,369	6,293	590,251	1	75	18	43
October	7,794	624,489	7,760	619,215	2	132	32	5,142
November	7,387	450,334	7,355	449,627	0	0	32	707
December	7,029	419,452	6,986	416,349	1	69	42	3,034
2014 January	9,004	582,458	8,956	530,638	3	271	45	51,549
February	9,008	1,042,469	8,976	1,040,376	0	0	32	2,092
March	9,548	477,320	9,516	475,832	2	166	30	1,322
April	8,459	291,343	8,428	290,515	3	208	28	620
May	8,255	389,195	8,218	388,539	3	216	34	440
June	7,569	355,983	7,534	355,717	0	0	35	266
July	8,012	378,452	7,964	377,479	3	180	45	793
August	5,125	263,515	5,104	262,986	2	360	19	168

For further information see INEbase – www.ine.es/en/ All press releases at: www.ine.es/en/prensa/prensa_en.htm

Press Office: Telephone numbers: 91 583 93 63 / 94 08 – Fax: 91 583 90 87 – gprensa@ine.es

Information Area: Telephone number: 91 583 91 00 – Fax: 91 583 91 58 – www.ine.es/infoine/?L=1