

22 March 2013

**Services Sector Activity Indicators (SSAI). Base 2010**  
January 2013. *Provisional data*

**The annual rate of turnover for the market Services Sector stands at  $-4.6\%$  in January, as compared with  $-7.5\%$  in December**

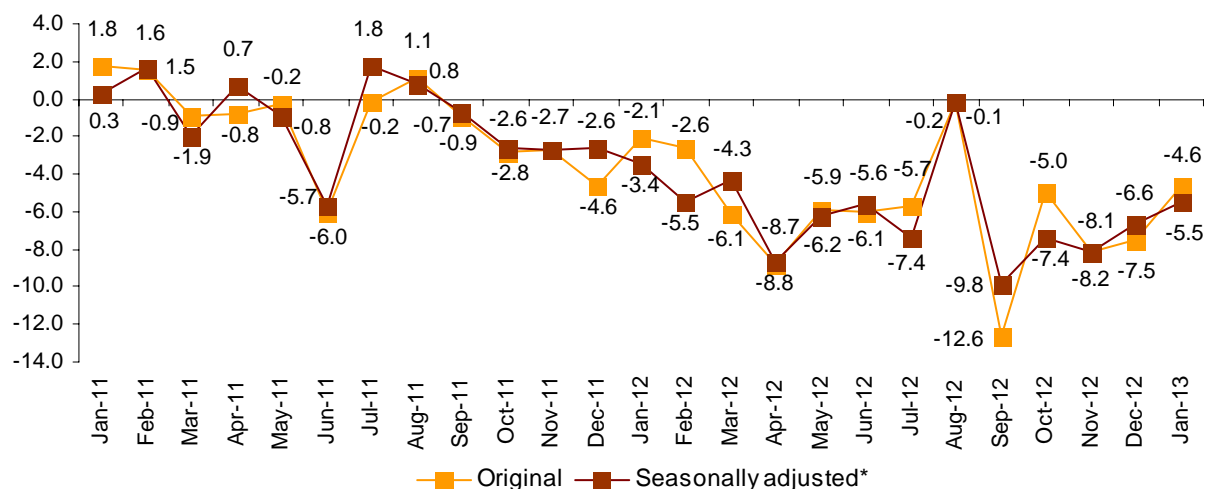
**The monthly variation is  $0.8\%$  after adjusting for seasonal and calendar effects**

**The INE publishes the first indices in base 2010 and disseminates them after adjusting for seasonal and calendar effects**

The turnover for the market Services Sector registered a variation of  $-4.6\%$  in January as compared with the same month of the previous year, almost three points over that registered in December.

After adjusting for seasonal and calendar effects the annual rate is  $-5.5\%$ , over one point over that registered in December.

**General Index of the Turnover for the market Services Sector**  
**Annual Rate**



## Annual performance of turnover for the Services Sector

All sectors registered negative annual rates. Trade decreased 4.1% and Other Services 5.6%. Within this, *Wholesale trade and trade intermediaries* and *Transport and Storage* experienced were the sectors with the lowest decrease, with annual rates of -0.9% and -1.2%, respectively. In turn, the sectors that experienced the greatest decreases were *Sale and repair of vehicles and motorcycles* (-16.3%) and *Professional, scientific and technical activities* (-10.5%).

After adjusting for seasonal and calendar effects, all sectors presented negative rates as compared with January of the previous year.

## National Turnover indices by sector

	Original index	% of variation Annual	Seasonally adjusted index	% of variation Annual
<b>GENERAL INDEX</b>	85.8	-4.6	90.8	-5.5
1. Trade	88.1	-4.1	90.6	-5.3
1.1. Sale and repair of vehicles and motorcycles	63.3	-16.3	69.6	-18.2
1.2. Wholesale trade	89.1	-0.9	93.9	-2.6
1.3. Retail trade	93.9	-5.9	90.2	-7.1
2. Other services	81.5	-5.6	91.3	-6.1
2.1. Transport and storage	90.5	-1.2	97.7	-3.3
2.2. Accommodation	74.4	-7.2	91.2	-7.0
2.3. Information and communications	87.3	-5.7	90.9	-6.2
2.4. Professional, scientific and technical activities	76.7	-10.5	85.6	-10.8
2.5. Administrative and support service activities	72.6	-5.8	90.9	-5.9

A more detailed analysis showed the activities that registered the most positives annual rates as well as those that registered the greatest decreases in January.

## Activities with the greatest annual rates of the Services Sector Turnover General Index

Activity (Elementary aggregate)	Annual rate (%)
Wholesale of food, beverages and tobacco	3.8
Programming, consultancy and other activities related to IT	2.6
Wholesale of agricultural raw materials and live animals	1.7
Storage and activities connected to transport	1.5

## Activities with the lowest annual rates of the Services Sector Turnover General Index

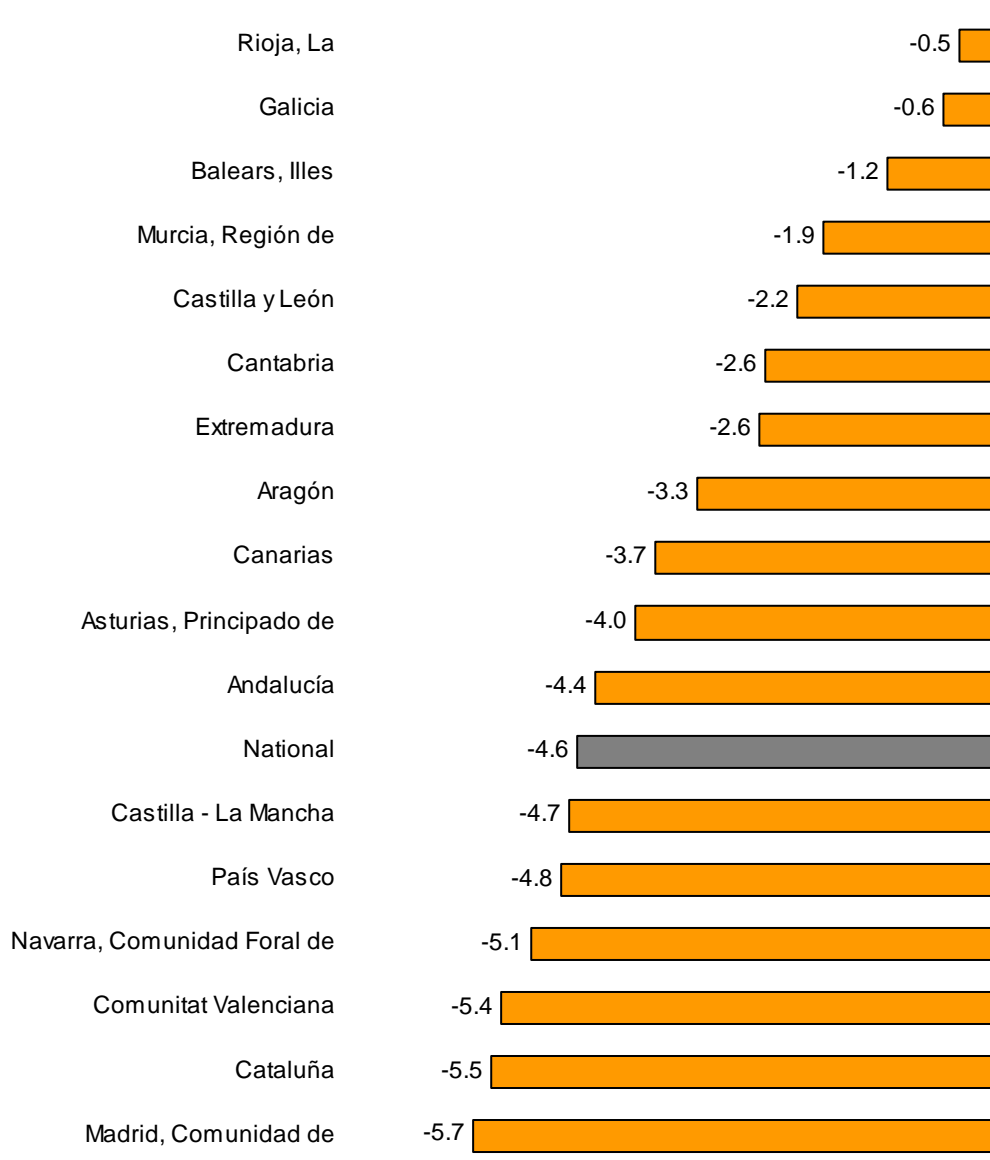
Activity (Elementary aggregate)	Annual rate (%)
Sale of motor vehicles, motorcycles and repair parts	-18.4
Advertising and market research	-14.6
Telecommunications	-11.5
Architecture and engineering activities: technical testing and analysis	-10.8

**Results by Autonomous Communities. Turnover variation rates**

All Autonomous Communities presented a negative performance of Turnover in the Service Sector in January.

The lowest decreases were registered in La Rioja (-0.5%) and Galicia (-0.6%). In turn, the greatest decreases were registered in Comunidad de Madrid (-5.7%) and Cataluña (-5.5%).

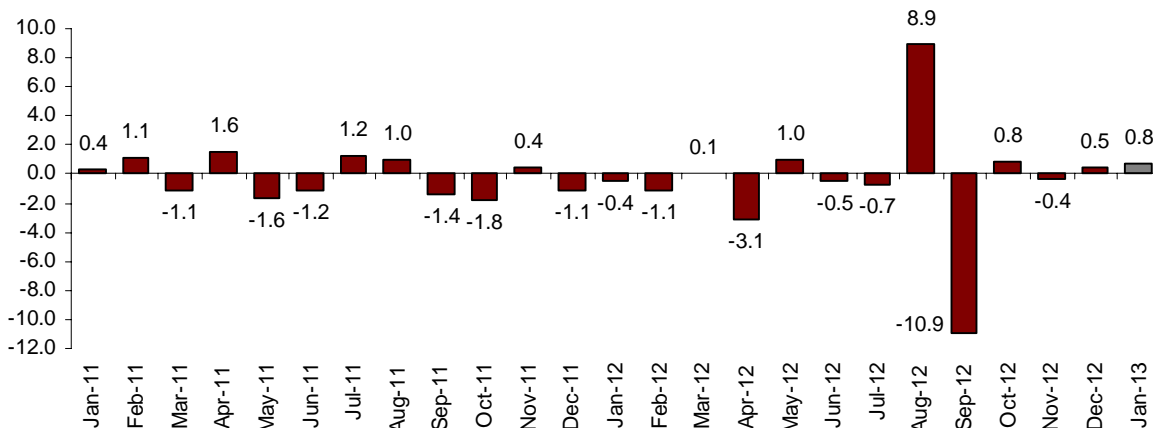
**General Index by Autonomous Community  
Turnover Annual Rate**



**Monthly performance of the Services Sector Turnover adjusted for seasonal and calendar effect**

After eliminating the seasonal and calendar effect, the annual variation of the General Index of Services Sector Turnover stood at 0.8% in January, representing more than three tenths points than that registered in the previous month.

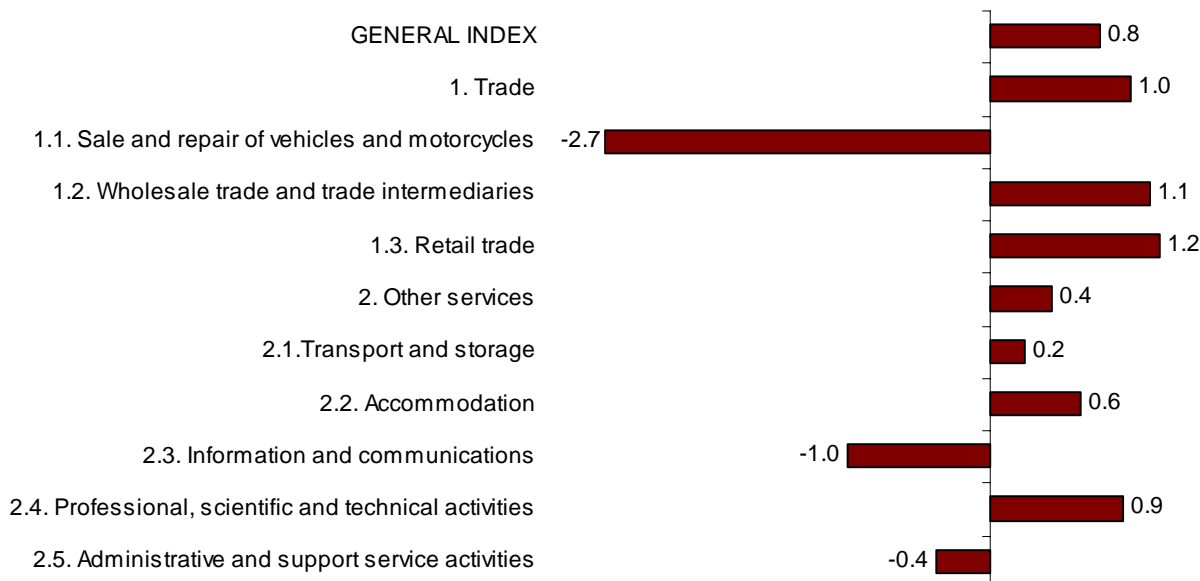
**Turnover General Index of the market Services Sector Adjusted for seasonal and calendar effects. Monthly Rate**



**Monthly performance of the Turnover by sectors adjusted for seasonal and calendar effect**

After eliminating the seasonal and calendar effect, the annual variation of Trade stood at 1.0% and Other Services at 0.4%. Three sectors registered a negative monthly rate: *Sale and repair of vehicles and motorcycles* (-2.7%), *Information and communication* (-1.0%) and *Administrative and support service activities*(-0.4%).

**General Turnover Index and by sectors Adjusted for seasonal and calendar effects. Annual rates**



## Performance of employed personnel

Employment in the Services Sector experienced an annual variation of –3.0% in January, as compared with the same month of the last year. This rate was one tenth above that registered in December.

Trade registered a variation of –2.4% and Other Services registered a variation of –3.4%.

By sectors, *Wholesale trade and trade intermediaries* and *Professional, scientific and technical activities* registered the lowest decreases (-1.8% and –2.9%, respectively).

In turn, *Sale and repair of vehicles and motorcycles* (-5.4%) and *Administrative and support service activities* (-3.9%) registered the greatest decreases.

## National Indices of employed personnel by sector

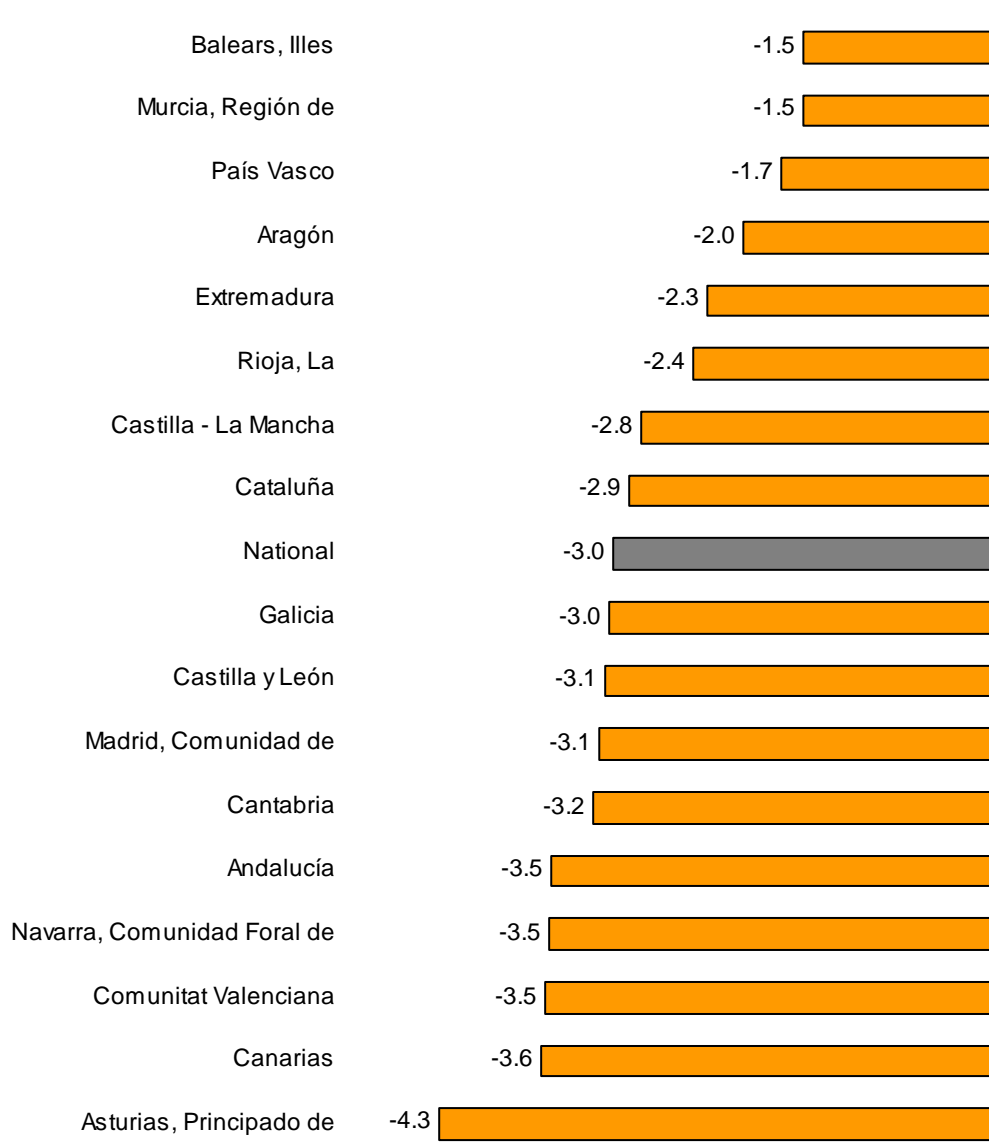
	Index	% of variation	
		Monthly	Annual
<b>GENERAL INDEX</b>	94.1	-1.3	-3.0
1. Trade	95.9	-1.1	-2.4
1.1. Sale and repair of vehicles and motorcycles	88.8	-0.8	-5.4
1.2. Wholesale trade	98.0	-0.7	-1.8
1.3. Retail trade	95.8	-1.4	-2.3
2. Other services	92.8	-1.5	-3.4
2.1. Transport and storage	93.4	-0.8	-3.1
2.2. Accommodation	90.0	-1.9	-3.4
2.3. Information and communications	94.9	-0.1	-3.7
2.4. Professional, scientific and technical activities	94.5	-0.5	-2.9
2.5. Administrative and support service activities	93.0	-3.0	-3.9

### Results by Autonomous Communities. Variation rates of employed personnel

All Autonomous Communities registered negative annual rates in employment in January.

The lowest decreases were in Balears and Región de Murcia (both with  $-1.5\%$ ) and País Vasco ( $-1.7\%$ ). In turn, the greatest decreases were registered in Principado de Asturias ( $-4.3\%$ ) and Canarias ( $-3.6\%$ ).

#### General Index by Autonomous Community Annual rate of employed personnel



## **Informative annex**

### **Main characteristics of the Services Sector Activity Indicators (SSAI) at 2010 base**

The National Statistics Institute (INE) publishes today the Services Sector Activity Indicators (SSAI) at 2010 base. In this way, the indicator is in line with the Council Regulations (EC) No. 1165/98 concerning short-term statistics, where it is established that every five years, Member States shall rebase the indices using as base years the years ending with a 0 or a 5. This change must be made no later than three years after the end of this new base year.

The objective of the introduction of the new base is to improve the representativeness of these indicators by means of the sample and structure of weightings updating. The aim is to obtain indicators that may adapt to the changes occurred during the last years in the non-financial market services sector in order to measure with accuracy the performance of said sector.

Among the changes introduced in the 2010 base, worth noting is the new system of calculation, which does not longer take into account the fixed base (characterised by the use of fixed weightings throughout the period of the base) and introduces a new way of producing these indicators, based in chained indices, in line with the methodology of this survey where a 25% sampling rotation takes place.

#### **Sample update and weighting structure**

##### *- Sample*

One of the most important aspects of the base change process is the updating of the sample. To this end, a complete new sampling design is carried out in line with the new population framework of the survey, obtaining a new theoretical sample, which represents better the current sector structure. During the year 2012, information on the new units according to the new sampling design has been compiled.

The sample used is a stratified sample by activity branch, Autonomous Community and size. A Neyman's allocation is carried out in order to spread the sample in the different strata, presetting sampling errors of 4%, by branch of activity at a national level, and by sector in every Autonomous Community. In each stratum a random selection has been carried out, except for the companies with more than 200 wage-earners, which are taken into account in the sample. In some branches and Autonomous Communities, strata of a smaller size are also exhaustive, due to the little population there. All the multilocated companies are also selected (this is, those with locations in different Autonomous Communities) with 50 and over wage-earners and companies with a great annual invoicing and with less than 200 wage-earners. In this way, in 2013 information of one of the 28,000 companies is compiled monthly to obtain the Services Sector Activity Indicators.

Services Sector Activity Indicators study the population formed by the companies whose main activity is described in sections G (Trade), H (Transport and storage), I (Accommodation), J (Information and Communications), M (Professional, Scientific and Technical activities) and N (Administrative and Support Services Activities) of the National Classification of Economic Activities 2009 (CNAE-09).

## - Weightings

The complete weighting structure has been updated at all functional and geographical breakdown levels, in order to represent Non-financial market services sector activity more precisely. In addition, weightings referred to the last December are also updated.

To this end, it is used the Services Annual Survey, referred to the year 2010, and the Trade Annual Survey, referred to year 2010, which analysed more than 140,000 companies from the sector. These surveys are referred to the average of year 2010 and in order to adjust the difference between this period and that of the weightings (month of December of the previous year), these are updated using information on the performance of the indicators of turnover and employment from the short-term Services Sector Activity Indicators survey itself.

## Calculation formula

In line with the change of base, it has been modified the formula used to compile the turnover and employment indices of the Services Sector Activity Indicators survey. This formula changes from the direct indices of fixed base Laspeyres in base 2005 to chain Laspeyres indices in base 2010 (monthly chain in the month of last December).

In a value index, both methodologies are equivalent, but this new formula is introduced because the 25% annual rotation of the sampling units makes the chain index to be considered more appropriate.

## Series linking

Any change of base means an interruption in the series, especially when a part of this new base it occurs a change in the calculation methodology used to elaborate the indices.

In order to guarantee the comparability of the information, the INE publishes retrospective series in this new base.

The new bases have been built recalculating the year 2012 with the new methodology, in order to disseminate annual rates calculated with the same methodology and sample from the first month (January 2013). For years previous to 2012, a structural coefficient link is applied. In this way it will be maintained the variation rates published in base 2005 in all the years except for 2012, minimising the reviews due to the change of base.

## Dissemination of the results

There are no dissemination changes according to the functional and geographical breakdown.

With the adjusting of the indices, a step ahead is taken. As well as been adjusted for calendar effects, the turnover indices for the main national aggregates are seasonally adjusted. This makes the analysis easier for the user.

Information on the new base of the Services Sector Activity Indicators is available in the INE website ([www.ine.es](http://www.ine.es)).



## Services Sector Activity Indicators. Base 2010 January 2013

Provisional data

### 1. Monthly turnover indices by sector

	Index	% variation		
		Monthly	Annual	Year-to-date average
<b>GENERAL INDEX</b>	<b>85.8</b>	<b>-12.2</b>	<b>-4.6</b>	<b>-4.6</b>
<b>1. TRADE</b>	<b>88.1</b>	<b>-10.8</b>	<b>-4.1</b>	<b>-4.1</b>
<b>1.1. SALE AND REPAIR OF VEHICLES</b>	<b>63.3</b>	<b>-9.1</b>	<b>-16.3</b>	<b>-16.3</b>
- Sale of motor vehicles	59.6	-12.1	-18.4	-18.4
- Maintenance and repair of motor vehicles	84.0	5.4	-6.9	-6.9
<b>1.2. WHOLESALE TRADE</b>	<b>89.1</b>	<b>-9.7</b>	<b>-0.9</b>	<b>-0.9</b>
- Wholesale on a fee or contract basis	95.8	-19.8	-3.2	-3.2
- Wholesale of agricultural raw materials and live animals	98.8	-7.0	1.7	1.7
- Wholesale of food, beverages and tobacco	89.4	-22.3	3.8	3.8
- Wholesale of household goods	86.5	-2.5	-2.9	-2.9
- Wholesale of information and communication equipment	73.1	-19.7	-3.6	-3.6
- Wholesale of other machinery, equipment and supplies	79.9	-12.3	-6.1	-6.1
- Wholesale of fuels, metals and others	97.0	2.7	-1.9	-1.9
- Non-specialised wholesale trade	81.9	-24.6	-8.7	-8.7
<b>1.3. RETAIL TRADE</b>	<b>93.9</b>	<b>-12.9</b>	<b>-5.9</b>	<b>-5.9</b>
<b>2. OTHER SERVICES</b>	<b>81.5</b>	<b>-14.8</b>	<b>-5.6</b>	<b>-5.6</b>
<b>2.1. TRANSPORTATION AND STORAGE SERVICES</b>	<b>90.5</b>	<b>-4.7</b>	<b>-1.2</b>	<b>-1.2</b>
Land transport	88.2	-0.8	-2.7	-2.7
- Rail transport	82.3	-8.2	-3.1	-3.1
- Taxi operation	86.5	-7.9	-5.5	-5.5
- Other passenger land transport	87.4	0.0	-7.7	-7.7
- Freight transport by road and removal services	89.2	0.2	-1.3	-1.3
Water transport	63.8	-18.8	-2.0	-2.0
Air transport	82.0	-8.3	-5.5	-5.5
Warehousing and support activities for transportation	97.1	-8.3	1.5	1.5
Post and courier activities	93.4	4.2	-1.9	-1.9
<b>2.2. ACCOMMODATION AND FOOD SERVICES ACTIVITIES</b>	<b>74.4</b>	<b>-13.0</b>	<b>-7.2</b>	<b>-7.2</b>
Accommodation	60.4	-6.7	-7.4	-7.4
Food and beverage service activities	80.6	-14.7	-7.1	-7.1
<b>2.3. INFORMATION AND COMMUNICATION</b>	<b>87.3</b>	<b>-14.7</b>	<b>-5.7</b>	<b>-5.7</b>
Publishing activities	75.7	-18.0	-3.3	-3.3
Motion picture, television programme production and music publishing activities	85.5	-18.6	-4.7	-4.7
Programming and broadcasting activities	82.9	-24.9	-8.2	-8.2
Telecommunications	79.1	-12.7	-11.5	-11.5
Computer programming, consultancy and related activities	107.7	-13.3	2.6	2.6
Information service activities	94.2	-17.6	-5.8	-5.8
<b>2.4. PROFESSIONAL, SCIENTIFIC AND TECHNICAL ACTIVITIES</b>	<b>76.7</b>	<b>-28.9</b>	<b>-10.5</b>	<b>-10.5</b>
Legal, accounting and management consulting activities	87.7	-20.5	-8.8	-8.8
Architectural and engineering activities; technical testing and analysis	68.5	-37.3	-10.8	-10.8
Advertising and market research	69.0	-33.9	-14.6	-14.6
Other professional scientific and technical activities	86.4	-10.8	-5.1	-5.1
<b>2.5. ADMINISTRATIVE AND SUPPORT SERVICE ACTIVITIES</b>	<b>72.6</b>	<b>-12.8</b>	<b>-5.8</b>	<b>-5.8</b>
Employment activities	86.2	-2.0	-1.6	-1.6
Travel agencies and tour operator services	47.9	-9.8	-7.0	-7.0
Security and investigation activities	96.9	-1.8	-3.0	-3.0
Cleaning activities	92.2	-4.3	-4.6	-4.6
Office administrative and other business support activities	77.1	-30.2	-8.8	-8.8

## 2. National turnover indices, adjusted for the calendar effect

	Adjusted index	% variation		
		Monthly	Annual	Year-to-date average
<b>GENERAL INDEX</b>	<b>85.1</b>	<b>-14.0</b>	<b>-5.4</b>	<b>-5.4</b>
1. Trade	87.2	-13.0	-5.1	-5.1
1.1. Sale and repair of vehicles	61.8	-13.8	-18.1	-18.1
1.2. Wholesale trade	88.0	-12.5	-2.2	-2.2
1.3. Retail trade	92.7	-14.2	-7.1	-7.1
2. Other Services	81.1	-15.8	-6.0	-6.0
2.1. Transportation and storage	89.7	-6.7	-2.0	-2.0
2.2. Accommodation and food service activities	74.5	-12.4	-6.9	-6.9
2.3. Information and communication	86.8	-15.8	-6.1	-6.1
2.4. Professional, scientific and technical activities	76.3	-29.7	-10.8	-10.8
2.5. Administrative and support service activities	72.3	-13.7	-6.1	-6.1

## 3. National turnover indices, adjusted for seasonal effects and by calendar

	index	% variation		
		Monthly	Annual	Year-to-date average
<b>GENERAL INDEX</b>	<b>90.8</b>	<b>0.8</b>	<b>-5.5</b>	<b>-5.5</b>
1. Trade	90.6	1.0	-5.3	-5.3
1.1. Sale and repair of vehicles	69.6	-2.7	-18.2	-18.2
1.2. Wholesale trade	93.9	1.1	-2.6	-2.6
1.3. Retail trade	90.2	1.2	-7.1	-7.1
2. Other Services	91.3	0.4	-6.1	-6.1
2.1. Transportation and storage	97.7	0.2	-3.3	-3.3
2.2. Accommodation and food service activities	91.2	0.6	-7.0	-7.0
2.3. Information and communication	90.9	-1.0	-6.2	-6.2
2.4. Professional, scientific and technical activities	85.6	0.9	-10.8	-10.8
2.5. Administrative and support service activities	90.9	-0.4	-5.9	-5.9

#### 4. National turnover indices Seasonally adjusted

		% variation		
		Annual <sup>1</sup>	Quarterly <sup>2</sup>	Monthly <sup>3</sup>
2009		-13.6		
2010		0.8		
2011		-1.0		
2012		-6.1		
2013		-2.3		
2011	TI	0.0	0.1	
	TII	-2.0	-0.3	
	TIII	0.6	0.1	
	TIV	-2.6	-2.5	
2012	TI	-4.4	-1.7	
	TII	-6.9	-2.9	
	TIII	-5.8	1.2	
	TIV	-7.4	-4.1	
2013	TI	-4.8	1.0	
2012	JAN	-3.4		-0.4
	FEB	-5.5		-1.1
	MAR	-4.3		0.1
	APR	-8.7		-3.1
	MAY	-6.2		1.0
	JUN	-5.6		-0.5
	JUL	-7.4		-0.7
	AUG	-0.2		8.9
	SEP	-9.8		-10.9
	OCT	-7.4		0.8
	NOV	-8.1		-0.4
	DEC	-6.6		0.5
2013	JAN	-5.5		0.8

Note:

<sup>1</sup>**Annual rate:** Variation of a period over the same period of the previous year

<sup>2</sup>**Quarterly rate:** Variation of a quarter over the previous quarter. In the current quarter it is the average to date over the previous quarter

<sup>3</sup>**Monthly rate:** Variation of a month over the previous month

## 5. National employed personnel indices by branch of activity

	Index	% variation		
		Monthly	Annual	Year-to-date average
<b>GENERAL INDEX</b>	<b>94.1</b>	<b>-1.3</b>	<b>-3.0</b>	<b>-3.0</b>
1. TRADE	95.9	-1.1	-2.4	-2.4
1.1. SALE AND REPAIR OF VEHICLES	88.8	-0.8	-5.4	-5.4
- Sale of motor vehicles	86.3	-0.5	-6.7	-6.7
- Maintenance and repair of motor vehicles	91.6	-1.1	-3.9	-3.9
1.2. WHOLESALE TRADE	98.0	-0.7	-1.8	-1.8
- Wholesale on a fee or contract basis	96.3	-0.3	-1.3	-1.3
- Wholesale of agricultural raw materials and live animals	98.0	-2.1	-2.0	-2.0
- Wholesale of food, beverages and tobacco	105.8	-2.0	-0.5	-0.5
- Wholesale of household goods	96.3	-0.6	0.2	0.2
- Wholesale of information and communication equipment	96.6	1.4	-3.0	-3.0
- Wholesale of other machinery, equipment and supplies	92.7	0.3	-3.9	-3.9
- Wholesale of fuels, metals and others	91.9	0.1	-4.6	-4.6
- Non-specialised wholesale trade	96.2	-1.3	-4.7	-4.7
1.3. RETAIL TRADE	95.8	-1.4	-2.3	-2.3
2. OTHER SERVICES	92.8	-1.5	-3.4	-3.4
2.1. TRANSPORTATION AND STORAGE SERVICES	93.4	-0.8	-3.1	-3.1
Land transport	93.8	-0.3	-2.7	-2.7
- Rail transport	99.5	0.0	-1.1	-1.1
- Taxi operation	95.2	-0.5	-3.2	-3.2
- Other passenger land transport	96.6	-0.6	-2.4	-2.4
- Freight transport by road and removal services	92.4	-0.2	-2.8	-2.8
Water transport	81.0	0.0	-11.3	-11.3
Air transport	92.9	-0.8	-4.1	-4.1
Warehousing and support activities for transportation	95.6	-0.7	-2.7	-2.7
Post and courier activities	86.7	-4.2	-5.3	-5.3
2.2. ACCOMMODATION AND FOOD SERVICES ACTIVITIES	90.0	-1.9	-3.4	-3.4
Accommodation	74.2	-4.5	-7.0	-7.0
Food and beverage service activities	94.4	-1.3	-2.7	-2.7
2.3. INFORMATION AND COMMUNICATION	94.9	-0.1	-3.7	-3.7
Publishing activities	85.8	0.1	-6.7	-6.7
Motion picture, television programme production and music publishing activities	78.3	-2.0	-14.4	-14.4
Programming and broadcasting activities	88.7	-2.8	-10.4	-10.4
Telecommunications	90.8	-0.1	-4.4	-4.4
Computer programming, consultancy and related activities	102.1	0.4	-0.6	-0.6
Information service activities	99.1	0.9	-2.0	-2.0
2.4. PROFESSIONAL, SCIENTIFIC AND TECHNICAL ACTIVITIES	94.5	-0.5	-2.9	-2.9
Legal, accounting and management consulting activities	97.6	0.0	-1.5	-1.5
Architectural and engineering activities; technical testing and analysis	90.5	-0.2	-4.8	-4.8
Advertising and market research	91.6	-4.7	-5.3	-5.3
Other professional scientific and technical activities	94.7	-0.1	-1.6	-1.6
2.5. ADMINISTRATIVE AND SUPPORT SERVICE ACTIVITIES	93.0	-3.0	-3.9	-3.9
Employment activities	91.5	-9.1	-3.7	-3.7
Travel agencies and tour operator services	87.2	-0.2	-4.0	-4.0
Security and investigation activities	92.9	-0.6	-4.1	-4.1
Cleaning activities	93.8	-0.6	-4.0	-4.0
Office administrative and other business support activities	93.1	-6.2	-4.0	-4.0

## 6. General turnover index by Autonomous Community

	Index	% variation		
		Monthly	Annual	Year-to-date average
<b>NATIONAL INDEX</b>	<b>85.8</b>	<b>-12.2</b>	<b>-4.6</b>	<b>-4.6</b>
Andalucía	86.8	-11.5	-4.4	-4.4
Aragón	88.1	-8.6	-3.3	-3.3
Asturias, Principado de	84.6	-10.0	-4.0	-4.0
Balears, Illes	64.2	-13.6	-1.2	-1.2
Canarias	94.6	-8.3	-3.7	-3.7
Cantabria	88.0	-11.0	-2.6	-2.6
Castilla y León	90.0	-10.0	-2.2	-2.2
Castilla-La Mancha	84.2	-9.8	-4.7	-4.7
Cataluña	85.5	-11.7	-5.5	-5.5
Comunitat Valenciana	88.6	-11.2	-5.4	-5.4
Extremadura	83.2	-14.3	-2.6	-2.6
Galicia	87.7	-18.0	-0.6	-0.6
Madrid, Comunidad de	84.2	-13.8	-5.7	-5.7
Murcia, Región de	87.2	-13.6	-1.9	-1.9
Navarra, Comunidad Foral de	83.1	-8.5	-5.1	-5.1
País Vasco	87.6	-11.5	-4.8	-4.8
Rioja, La	88.2	-11.1	-0.5	-0.5

## 7. General employed personnel index by Autonomous Community

	Index	% variation		
		Monthly	Annual	Year-to-date average
<b>NATIONAL INDEX</b>	<b>94.1</b>	<b>-1.3</b>	<b>-3.0</b>	<b>-3.0</b>
Andalucía	94.0	-1.4	-3.5	-3.5
Aragón	93.1	-0.6	-2.0	-2.0
Asturias, Principado de	91.9	-1.1	-4.3	-4.3
Balears, Illes	80.9	-1.2	-1.5	-1.5
Canarias	95.4	-0.7	-3.6	-3.6
Cantabria	93.0	-1.4	-3.2	-3.2
Castilla y León	94.2	-1.1	-3.1	-3.1
Castilla-La Mancha	92.5	-0.4	-2.8	-2.8
Cataluña	94.4	-1.8	-2.9	-2.9
Comunitat Valenciana	95.7	-1.9	-3.5	-3.5
Extremadura	94.2	-0.7	-2.3	-2.3
Galicia	93.9	-1.7	-3.0	-3.0
Madrid, Comunidad de	94.3	-1.0	-3.1	-3.1
Murcia, Región de	95.5	-0.8	-1.5	-1.5
Navarra, Comunidad Foral de	93.5	-1.8	-3.5	-3.5
País Vasco	96.8	-1.1	-1.7	-1.7
Rioja, La	96.0	-1.6	-2.4	-2.4