

23 March 2017

**Services Sector Activity Indicators (SSAI). Base 2010**  
January 2017. *Provisional data*

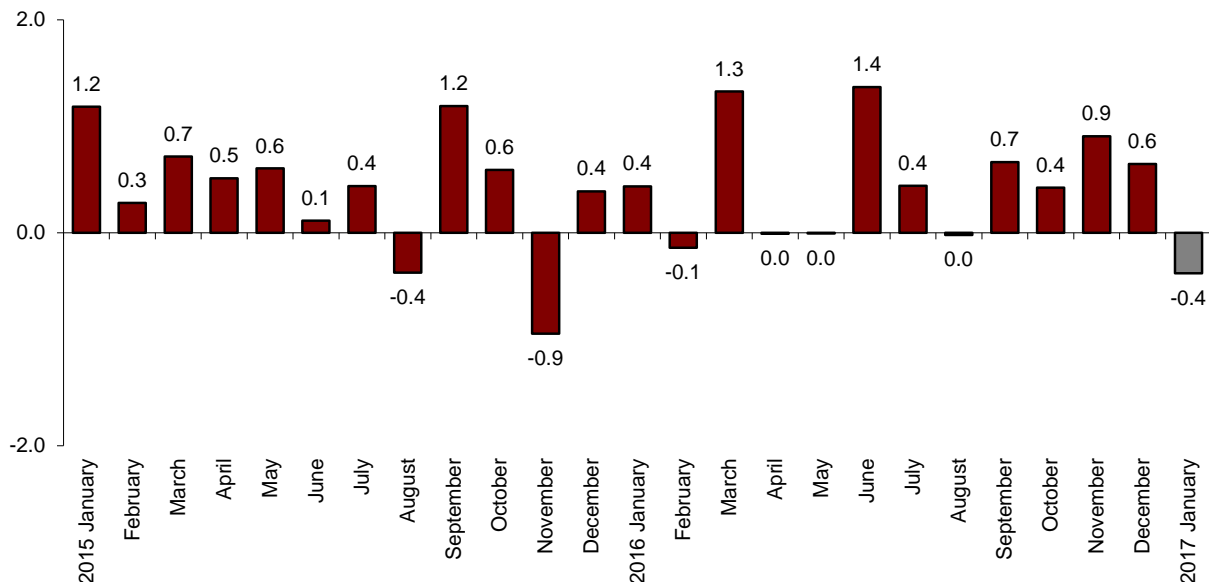
**The monthly variation of turnover<sup>1</sup> for the Market Services Sector is -0.4% after adjusting for seasonal and calendar effects**

**The annual rate of turnover stands at 5.3% in the seasonally and calendar adjusted series and at 7.7% in the original series**

**Monthly evolution of the turnover for the Market Services Sector**

The monthly variation of the general index of the turnover for the Market Services Sector between January and December was -0.4%, after adjusting for seasonally and calendar effects. This rate is one point lower than that registered in December.

**General index of the turnover for the Market Services Sector  
Adjusted for seasonal and calendar effects. Monthly rate**

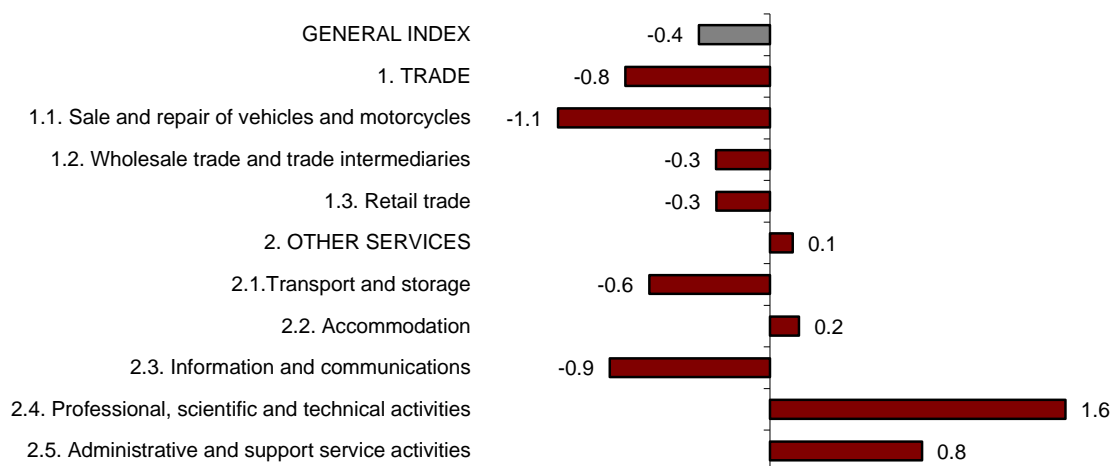


<sup>1</sup> As explained in the methodology for this value index, the information is presented in current terms (nominal terms), that is, without adjusting the effects in the price variation thereof.

After adjusting for seasonal and calendar effects, *Trade* registered a monthly variation of -0.8% and *Other services* did so by 0.1%.

By sectors, *Sale and repair of motor vehicles and motorcycles* (-1.1%) and *Information and communications* (-0.9%) registered the greatest decreases. In turn, *Professional, scientific and technical activities* (1.6%) and *Administrative activities and supportive services* (0.8%) registered the highest increases.

**General and by sectors turnover Index  
Adjusted for seasonal and calendar effects. Monthly rate**



A more detailed analysis showed the activities that registered the highest and lowest monthly rates in the month of January.

**Activities with the greatest monthly rates of the Services Sector turnover index  
adjusted for seasonal and calendar effects**

| Activity (CNAE-2009 groups)  | Monthly rate(%) |
|--|-----------------|
| Office administrative and other business support activities              | 5.2             |
| Legal, accounting and management consulting activities                   | 2.5             |
| Architectural and engineering activities; technical testing and analysis | 1.5             |

**Activities with the lowest monthly rates of the Services Sector turnover index  
adjusted for seasonal and calendar effects**

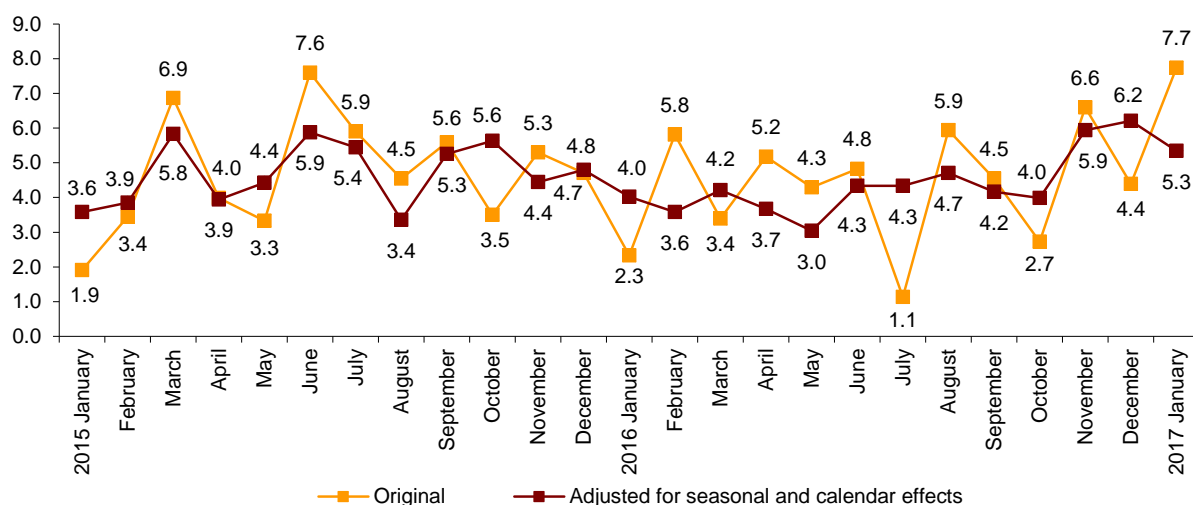
| Activity (CNAE-2009 groups)   | Monthly rate(%) |
|---|-----------------|
| Motion picture, television programme production and music publishing activities | -4.0            |
| Other professional scientific and technical activities                          | -2.5            |
| Security and investigation activities   | -2.0            |

## Annual turnover evolution rates for the Market Services sector

In January, the general Index of the turnover for the Market Services sector, after adjusting for seasonal and calendar effects, registered a variation of 5.3%, as compared to the same month of 2016. This rate was nine tenths lower than that registered in December.

The original series registered an annual variation of 7.7%, which is 3.3 points higher than that registered in December.

### General index of the turnover for the Market Services Sector Annual Rate



After adjusting for seasonal and calendar effects, *Trade* increased by 5.5% and *Other services* did so by 4.9%, as compared to January 2016.

All the sectors registered positive annual rates. *Sale and repair of vehicles and motorcycles* (7.9%) was the one growing the most.

### Annual rates of the Turnover index for the Market Services Sector: General and by sector

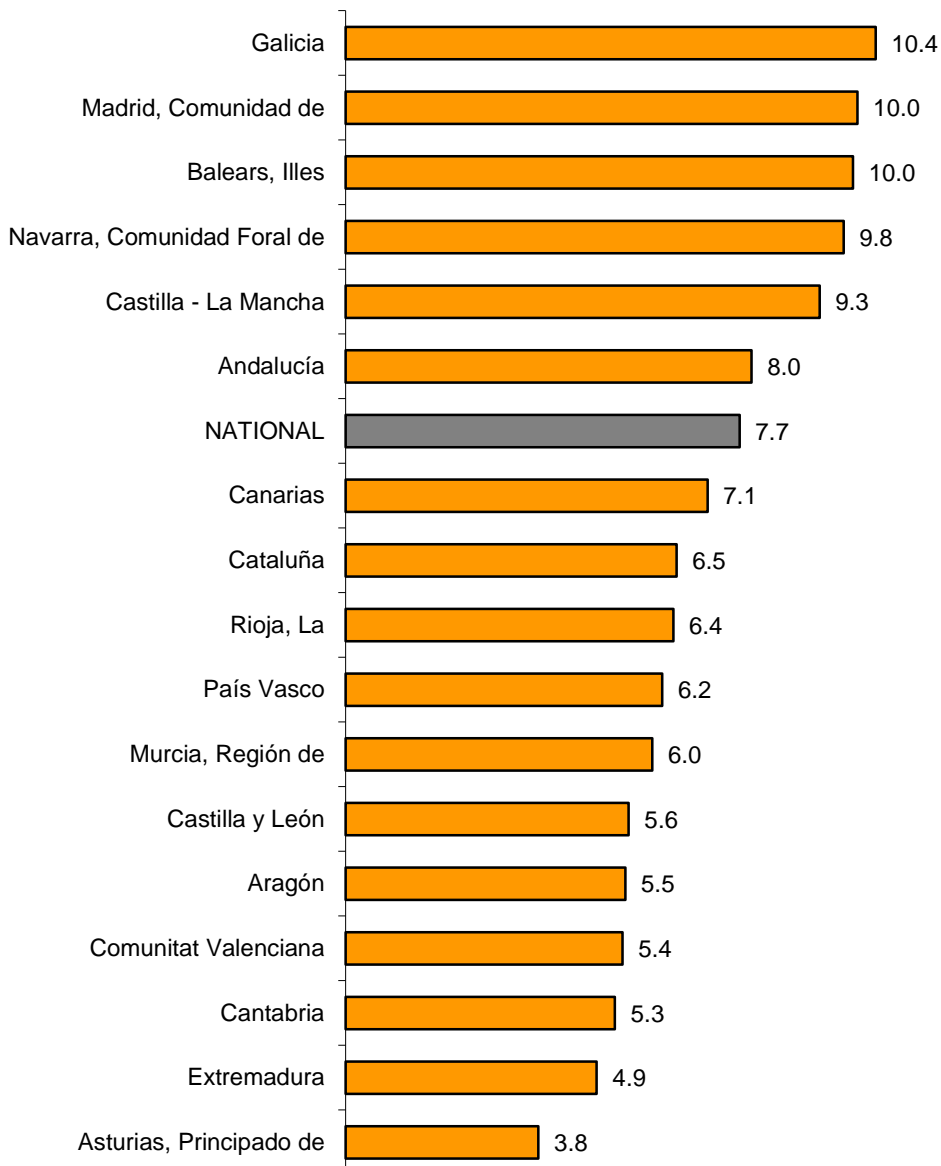
|  | Original index  | Seasonally adjusted index |
|--|-----------------|---------------------------|
|  | Annual rate (%) | Annual rate (%)           |
| <b>GENERAL INDEX</b>                                   | <b>7.7</b>      | <b>5.3</b>                |
| <b>1. TRADE</b>  | <b>8.5</b>      | <b>5.5</b>                |
| 1.1. Sale and repair of vehicles and motorcycles       | 10.8            | 7.9                       |
| 1.2. Wholesale trade                                   | 10.8            | 6.9                       |
| 1.3. Retail trade                                      | 4.0             | 3.3                       |
| <b>2. OTHER SERVICES</b>                               | <b>6.3</b>      | <b>4.9</b>                |
| 2.1. Transport and storage                             | 7.0             | 4.6                       |
| 2.2. Accommodation                                     | 3.5             | 4.5                       |
| 2.3. Information and communications                    | 4.6             | 3.0                       |
| 2.4. Professional, scientific and technical activities | 8.8             | 6.6                       |
| 2.5. Administrative and support service activities     | 7.6             | 6.0                       |

**Results by Autonomous Community. Annual turnover variation rates. Original series**

In January, all the Autonomous Communities registered increases in their turnover in the Market Service Sector as compared to the same month of 2016.

Galicia (10.4%), Comunidad de Madrid and Illes Balears (both 10.0%) increased the most. In turn, Principado de Asturias (3.8%), Extremadura (4.9%) and Cantabria (5.3%) registered the lowest increases.

**General Indices: National and by Autonomous Community  
Turnover Annual Rate**



## Evolution of employed personnel

Employment in the Market Services Sector increased by 2.4% in January, as compared to the same month of the previous year. This rate remains the same as that of December.

Employment increased by 2.0% in the annual rate in *Trade* and 2.6% in *Other services*.

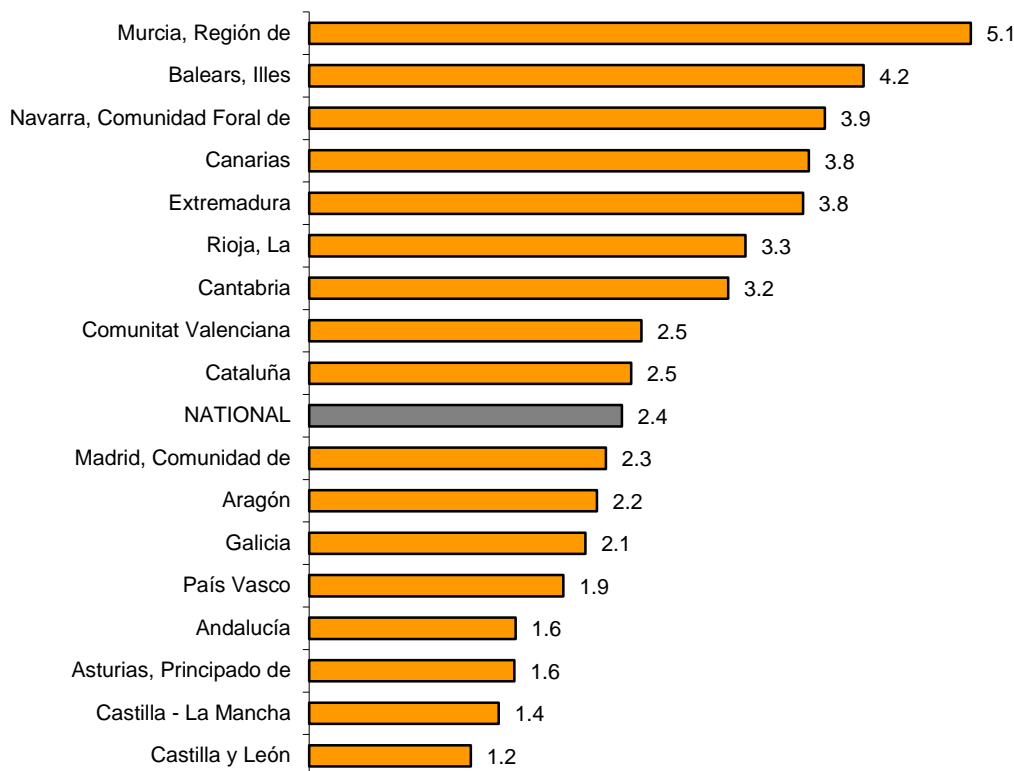
### National Indices of employed personnel by sector

|  | Index       | Rate (%)    |            |
|--|-------------|-------------|------------|
|  |             | Monthly     | Annual     |
| <b>GENERAL INDEX</b>                                   | <b>99.7</b> | <b>-1.4</b> | <b>2.4</b> |
| <b>1. TRADE</b>  | <b>99.5</b> | <b>-1.4</b> | <b>2.0</b> |
| 1.1. Sale and repair of vehicles and motorcycles       | 91.4        | -0.1        | 1.9        |
| 1.2. Wholesale trade                                   | 103.5       | -0.8        | 2.4        |
| 1.3. Retail trade                                      | 98.5        | -1.9        | 1.8        |
| <b>2. OTHER SERVICES</b>                               | <b>99.7</b> | <b>-1.5</b> | <b>2.6</b> |
| 2.1. Transport and storage                             | 98.5        | -0.6        | 2.4        |
| 2.2. Accommodation                                     | 96.0        | -2.4        | 2.2        |
| 2.3. Information and communications                    | 98.3        | 0.0         | 1.6        |
| 2.4. Professional, scientific and technical activities | 98.4        | -0.5        | 2.1        |
| 2.5. Administrative and support service activities     | 106.9       | -2.5        | 4.1        |

### Results by Autonomous Community. Annual employment variation rates

All Autonomous Communities registered positive annual rates in employment. Región de Murcia (5.1%) registered the greatest increase.

#### General Indices: National and by Autonomous Community Annual rate of employed personnel



## Services Sector Activity Indicators. Base 2010 January 2017

Provisional data

### 1. Turnover indices: General and by sector. Adjusted for seasonal and calendar effects

|  | Index        | Rate (%)    |            |                      |
|--|--------------|-------------|------------|----------------------|
|  |              | Monthly     | Annual     | Year-to-date average |
| <b>GENERAL INDEX</b>                                   | <b>104.7</b> | <b>-0.4</b> | <b>5.3</b> | <b>5.3</b>           |
| 1. TRADE   | 104.2        | -0.8        | 5.5        | 5.5                  |
| 1.1. Sale and repair of vehicles and motorcycles       | 110.6        | -1.1        | 7.9        | 7.9                  |
| 1.2. Wholesale trade                                   | 107.3        | -0.3        | 6.9        | 6.9                  |
| 1.3. Retail trade                                      | 97.6         | -0.3        | 3.3        | 3.3                  |
| 2. OTHER SERVICES                                      | 105.5        | 0.1         | 4.9        | 4.9                  |
| 2.1. Transport and storage                             | 112.5        | -0.6        | 4.6        | 4.6                  |
| 2.2. Accommodation                                     | 111.3        | 0.2         | 4.5        | 4.5                  |
| 2.3. Information and communications                    | 96.5         | -0.9        | 3.0        | 3.0                  |
| 2.4. Professional, scientific and technical activities | 102.5        | 1.6         | 6.6        | 6.6                  |
| 2.5. Administrative and support service activities     | 108.8        | 0.8         | 6.0        | 6.0                  |

### 2. Turnover indices: General and by sector. Adjusted for calendar effects

|  | Index       | Rate (%)   |                      |
|--|-------------|------------|----------------------|
|  |             | Annual     | Year-to-date average |
| <b>GENERAL INDEX</b>                                   | <b>97.4</b> | <b>5.2</b> | <b>5.2</b>           |
| 1. TRADE   | 99.7        | 5.3        | 5.3                  |
| 1.1. Sale and repair of vehicles and motorcycles       | 96.0        | 7.5        | 7.5                  |
| 1.2. Wholesale trade                                   | 100.3       | 6.8        | 6.8                  |
| 1.3. Retail trade                                      | 99.3        | 2.9        | 2.9                  |
| 2. OTHER SERVICES                                      | 93.2        | 4.9        | 4.9                  |
| 2.1. Transport and storage                             | 104.1       | 4.4        | 4.4                  |
| 2.2. Accommodation                                     | 88.4        | 4.4        | 4.4                  |
| 2.3. Information and communications                    | 91.3        | 2.7        | 2.7                  |
| 2.4. Professional, scientific and technical activities | 90.5        | 7.0        | 7.0                  |
| 2.5. Administrative and support service activities     | 87.6        | 6.3        | 6.3                  |

## 3. National turnover indices: General and by branch of activity.

### Original series

|   | Index       | Rate (%)   |                      |
|---|-------------|------------|----------------------|
|   |             | Annual     | Year-to-date average |
| <b>GENERAL INDEX</b>  | <b>97.5</b> | <b>7.7</b> | <b>7.7</b>           |
| <b>1. TRADE</b>   | <b>99.7</b> | <b>8.5</b> | <b>8.5</b>           |
| 1.1. SALE AND REPAIR OF VEHICLES  | 96.0        | 10.8       | 10.8                 |
| - Sale of motor vehicles  | 97.9        | 11.6       | 11.6                 |
| - Maintenance and repair of motor vehicles                                      | 85.2        | 5.8        | 5.8                  |
| 1.2. WHOLESALE TRADE AND COMMISSION TRADE                                       | 100.4       | 10.8       | 10.8                 |
| - Wholesale on a fee or contract basis  | 116.5       | 4.6        | 4.6                  |
| - Wholesale of agricultural raw materials and live animals                      | 105.6       | 2.4        | 2.4                  |
| - Wholesale of food, beverages and tobacco                                      | 99.8        | 5.4        | 5.4                  |
| - Wholesale of household goods  | 107.9       | 9.6        | 9.6                  |
| - Wholesale of information and communication equipment                          | 83.4        | 4.0        | 4.0                  |
| - Wholesale of other machinery, equipment and supplies                          | 91.2        | 7.6        | 7.6                  |
| - Other specialised wholesale trade   | 101.2       | 23.1       | 23.1                 |
| - Non-specialised wholesale trade   | 105.7       | 8.2        | 8.2                  |
| 1.3. RETAIL TRADE   | 99.3        | 4.0        | 4.0                  |
| <b>2. OTHER SERVICES</b>  | <b>93.3</b> | <b>6.3</b> | <b>6.3</b>           |
| 2.1. TRANSPORTATION AND STORAGE SERVICES  | 104.2       | 7.0        | 7.0                  |
| Land transport  | 99.0        | 6.9        | 6.9                  |
| - Rail transport  | 93.2        | 1.8        | 1.8                  |
| - Taxi operation  | 93.6        | 3.4        | 3.4                  |
| - Other passenger land transport  | 91.6        | 5.4        | 5.4                  |
| - Freight transport by road and removal services                                | 101.6       | 7.8        | 7.8                  |
| Water transport   | 67.5        | 0.8        | 0.8                  |
| Air transport   | 95.2        | 1.6        | 1.6                  |
| Warehousing and support activities for transportation                           | 115.3       | 8.1        | 8.1                  |
| Post and courier activities   | 103.5       | 9.5        | 9.5                  |
| 2.2. ACCOMMODATION AND FOOD SERVICES ACTIVITIES                                 | 88.4        | 3.5        | 3.5                  |
| Accommodation   | 79.7        | 10.0       | 10.0                 |
| Food and beverage service activities  | 92.7        | 1.4        | 1.4                  |
| 2.3. INFORMATION AND COMMUNICATION  | 91.5        | 4.6        | 4.6                  |
| Publishing activities   | 76.7        | 5.8        | 5.8                  |
| Motion picture, television programme production and music publishing activities | 92.0        | -0.1       | -0.1                 |
| Programming and broadcasting activities   | 95.6        | 1.1        | 1.1                  |
| Telecommunications  | 75.8        | 3.7        | 3.7                  |
| Computer programming, consultancy and related activities                        | 123.5       | 6.8        | 6.8                  |
| Information service activities  | 106.9       | 5.2        | 5.2                  |
| 2.4. PROFESSIONAL, SCIENTIFIC AND TECHNICAL ACTIVITIES                          | 90.6        | 8.8        | 8.8                  |
| Legal, accounting and management consulting activities                          | 109.0       | 13.3       | 13.3                 |
| Architectural and engineering activities; technical testing and analysis        | 80.5        | 7.4        | 7.4                  |
| Advertising and market research   | 78.1        | 3.3        | 3.3                  |
| Other professional scientific and technical activities                          | 89.1        | 4.9        | 4.9                  |
| 2.5. ADMINISTRATIVE AND SUPPORT SERVICE ACTIVITIES                              | 87.7        | 7.6        | 7.6                  |
| Employment activities   | 145.0       | 19.9       | 19.9                 |
| Travel agencies and tour operator services                                      | 60.6        | 6.6        | 6.6                  |
| Security and investigation activities   | 104.2       | 2.1        | 2.1                  |
| Cleaning activities   | 98.6        | 4.9        | 4.9                  |
| Office administrative and other business support activities                     | 92.2        | 9.1        | 9.1                  |

## 4. Employed personnel indices: General and by branch of activity

|   | Index       | Rate (%)    |            |                      |
|---|-------------|-------------|------------|----------------------|
|   |             | Monthly     | Annual     | Year-to-date average |
| <b>GENERAL INDEX</b>  | <b>99.7</b> | <b>-1.4</b> | <b>2.4</b> | <b>2.4</b>           |
| <b>1. TRADE</b>   | <b>99.5</b> | <b>-1.4</b> | <b>2.0</b> | <b>2.0</b>           |
| 1.1. SALE AND REPAIR OF VEHICLES  | 91.4        | -0.1        | 1.9        | 1.9                  |
| - Sale of motor vehicles  | 91.2        | 0.0         | 3.2        | 3.2                  |
| - Maintenance and repair of motor vehicles                                      | 91.8        | -0.2        | 0.5        | 0.5                  |
| 1.2. WHOLESALE TRADE AND COMMISSION TRADE                                       | 103.5       | -0.8        | 2.4        | 2.4                  |
| - Wholesale on a fee or contract basis  | 102.8       | 1.0         | 1.2        | 1.2                  |
| - Wholesale of agricultural raw materials and live animals                      | 105.6       | -1.2        | 2.4        | 2.4                  |
| - Wholesale of food, beverages and tobacco                                      | 116.0       | -2.7        | 4.2        | 4.2                  |
| - Wholesale of household goods  | 96.5        | 0.8         | 1.4        | 1.4                  |
| - Wholesale of information and communication equipment                          | 103.8       | 0.1         | 2.7        | 2.7                  |
| - Wholesale of other machinery, equipment and supplies                          | 99.4        | 0.1         | 2.2        | 2.2                  |
| - Other specialised wholesale trade   | 94.4        | -0.4        | 1.0        | 1.0                  |
| - Non-specialised wholesale trade   | 99.3        | 1.0         | 3.9        | 3.9                  |
| 1.3. RETAIL TRADE   | 98.5        | -1.9        | 1.8        | 1.8                  |
| <b>2. OTHER SERVICES</b>  | <b>99.7</b> | <b>-1.5</b> | <b>2.6</b> | <b>2.6</b>           |
| 2.1. TRANSPORTATION AND STORAGE SERVICES  | 98.5        | -0.6        | 2.4        | 2.4                  |
| Land transport  | 99.9        | -0.3        | 2.0        | 2.0                  |
| - Rail transport  | 96.3        | 0.2         | 0.3        | 0.3                  |
| - Taxi operation  | 95.5        | -0.3        | 1.0        | 1.0                  |
| - Other passenger land transport  | 99.1        | 0.1         | 2.9        | 2.9                  |
| - Freight transport by road and removal services                                | 100.8       | -0.4        | 2.0        | 2.0                  |
| Water transport   | 84.2        | -1.3        | 2.5        | 2.5                  |
| Air transport   | 84.7        | -2.7        | 0.6        | 0.6                  |
| Warehousing and support activities for transportation                           | 102.4       | -1.0        | 3.3        | 3.3                  |
| Post and courier activities   | 87.2        | -0.4        | 3.4        | 3.4                  |
| 2.2. ACCOMMODATION AND FOOD SERVICES ACTIVITIES                                 | 96.0        | -2.4        | 2.2        | 2.2                  |
| Accommodation   | 81.6        | -4.0        | 4.1        | 4.1                  |
| Food and beverage service activities  | 100.1       | -2.0        | 1.8        | 1.8                  |
| 2.3. INFORMATION AND COMMUNICATION  | 98.3        | 0.0         | 1.6        | 1.6                  |
| Publishing activities   | 82.5        | -0.1        | -0.3       | -0.3                 |
| Motion picture, television programme production and music publishing activities | 81.4        | -1.4        | 7.6        | 7.6                  |
| Programming and broadcasting activities   | 88.6        | -1.7        | 0.7        | 0.7                  |
| Telecommunications  | 80.4        | -0.3        | -7.3       | -7.3                 |
| Computer programming, consultancy and related activities                        | 112.6       | 0.4         | 3.7        | 3.7                  |
| Information service activities  | 96.6        | 0.2         | 1.3        | 1.3                  |
| 2.4. PROFESSIONAL, SCIENTIFIC AND TECHNICAL ACTIVITIES                          | 98.4        | -0.5        | 2.1        | 2.1                  |
| Legal, accounting and management consulting activities                          | 101.3       | 0.0         | 1.4        | 1.4                  |
| Architectural and engineering activities; technical testing and analysis        | 93.7        | -0.1        | 2.6        | 2.6                  |
| Advertising and market research   | 93.7        | -5.6        | 1.7        | 1.7                  |
| Other professional scientific and technical activities                          | 103.0       | 0.9         | 3.9        | 3.9                  |
| 2.5. ADMINISTRATIVE AND SUPPORT SERVICE ACTIVITIES                              | 106.9       | -2.5        | 4.1        | 4.1                  |
| Employment activities   | 149.4       | -3.9        | 11.9       | 11.9                 |
| Travel agencies and tour operator services                                      | 90.9        | -1.0        | 0.9        | 0.9                  |
| Security and investigation activities   | 97.6        | -1.3        | 2.0        | 2.0                  |
| Cleaning activities   | 96.6        | -1.9        | 1.2        | 1.2                  |
| Office administrative and other business support activities                     | 106.4       | -3.1        | 4.4        | 4.4                  |



## 5. Turnover indices: National and by Autonomous Community

|                             | Index       | Rate (%)   |                      |
|-----------------------------|-------------|------------|----------------------|
|                             |             | Annual     | Year-to-date average |
| <b>NATIONAL</b>             | <b>97.5</b> | <b>7.7</b> | <b>7.7</b>           |
| Andalucía                   | 96.5        | 8.0        | 8.0                  |
| Aragón                      | 92.8        | 5.5        | 5.5                  |
| Asturias, Principado de     | 90.1        | 3.8        | 3.8                  |
| Balears, Illes              | 81.9        | 10.0       | 10.0                 |
| Canarias                    | 108.0       | 7.1        | 7.1                  |
| Cantabria                   | 91.0        | 5.3        | 5.3                  |
| Castilla y León             | 95.0        | 5.6        | 5.6                  |
| Castilla-La Mancha          | 94.2        | 9.3        | 9.3                  |
| Cataluña                    | 98.3        | 6.5        | 6.5                  |
| Comunitat Valenciana        | 101.8       | 5.4        | 5.4                  |
| Extremadura                 | 90.6        | 4.9        | 4.9                  |
| Galicia                     | 106.0       | 10.4       | 10.4                 |
| Madrid, Comunidad de        | 96.2        | 10.0       | 10.0                 |
| Murcia, Región de           | 101.3       | 6.0        | 6.0                  |
| Navarra, Comunidad Foral de | 93.8        | 9.8        | 9.8                  |
| País Vasco                  | 97.2        | 6.2        | 6.2                  |
| Rioja, La                   | 103.7       | 6.4        | 6.4                  |

## 6. Employed personnel indices: National and by Autonomous Community

|                             | Index       | Rate (%)    |            |                      |
|-----------------------------|-------------|-------------|------------|----------------------|
|                             |             | Monthly     | Annual     | Year-to-date average |
| <b>NATIONAL</b>             | <b>99.7</b> | <b>-1.4</b> | <b>2.4</b> | <b>2.4</b>           |
| Andalucía                   | 97.6        | -1.0        | 1.6        | 1.6                  |
| Aragón                      | 97.3        | -2.1        | 2.2        | 2.2                  |
| Asturias, Principado de     | 92.8        | -1.6        | 1.6        | 1.6                  |
| Balears, Illes              | 89.7        | -2.9        | 4.2        | 4.2                  |
| Canarias                    | 104.3       | -1.9        | 3.8        | 3.8                  |
| Cantabria                   | 98.4        | -1.8        | 3.2        | 3.2                  |
| Castilla y León             | 95.7        | -1.4        | 1.2        | 1.2                  |
| Castilla-La Mancha          | 98.6        | -0.9        | 1.4        | 1.4                  |
| Cataluña                    | 103.1       | -1.5        | 2.5        | 2.5                  |
| Comunitat Valenciana        | 102.2       | -1.7        | 2.5        | 2.5                  |
| Extremadura                 | 100.7       | -1.1        | 3.8        | 3.8                  |
| Galicia                     | 96.7        | -1.3        | 2.1        | 2.1                  |
| Madrid, Comunidad de        | 97.9        | -1.4        | 2.3        | 2.3                  |
| Murcia, Región de           | 106.6       | -1.1        | 5.1        | 5.1                  |
| Navarra, Comunidad Foral de | 103.5       | -1.4        | 3.9        | 3.9                  |
| País Vasco                  | 102.1       | -1.1        | 1.9        | 1.9                  |
| Rioja, La                   | 105.2       | -0.5        | 3.3        | 3.3                  |

For further information see **INEbase** - [www.ine.es/en/](http://www.ine.es/en/) All press releases at: [www.ine.es/en/prensa/prensa\\_en.htm](http://www.ine.es/en/prensa/prensa_en.htm)

**Press Office:** Telephone numbers: 91 583 93 63 / 94 08 – Fax: 91 583 90 87 - [gprensa@ine.es](mailto:gprensa@ine.es)

**Information Area:** Telephone number: 91 583 91 00 – Fax: 91 583 91 58 – [www.ine.es/infoine](http://www.ine.es/infoine)