

19 April 2013

Services Sector Activity Indicators (SSAI). Base 2010
February 2013. *Provisional data*

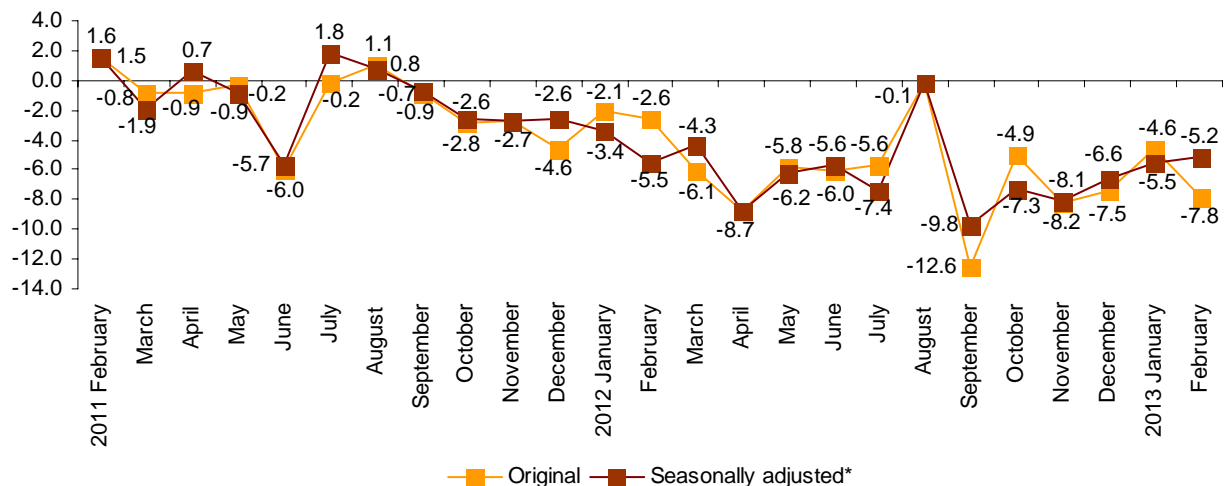
The annual rate of turnover for the market Services Sector stands at -7.8% in the original series and at -5.2% in the seasonally adjusted series

The monthly variation is -0.9% after adjusting for seasonal and calendar effects

The turnover for the market Services Sector registered a variation of -7.8% in February, as compared with the same month of the previous year, more than three points below that registered in January.

After adjusting for seasonal and calendar effects the annual rate is -5.2% , three tenths over that registered in January.

General Index of the turnover for the Market Services Sector
Annual Rate



*Seasonally adjusted: adjusted for season and calendar effects.

Annual performance of turnover for the Services Sector

All sectors registered negative annual rates. Trade decreased 7.8% and Other Services did so by 7.7%. Within these, *Transport and Storage* (-5.1%), *Wholesale trade and trade intermediaries* (-6.1%) and *Accommodation* (-6.3%) were the sectors with the slightest decreases. In turn, the greatest decreases were registered in *Sale and repair of vehicles and motorcycles* (-19.2%) and *Administrative and support service activities* (-11.0%).

After adjusting for seasonal and calendar effects, all sectors presented negative rates as compared with February of the previous year.

National Turnover indices by sector

	Original index	Annual rate (%)	Seasonally adjusted index	Annual rate (%)
GENERAL INDEX	81.5	-7.8	90.1	-5.2
1. Trade	81.6	-7.8	89.5	-4.8
1.1. Sale and repair of vehicles and motorcycles	66.2	-19.2	69.4	-14.8
1.2. Wholesale trade	85.1	-6.1	92.0	-3.4
1.3. Retail trade	80.2	-7.4	91.5	-4.7
2. Other services	81.2	-7.7	91.1	-5.9
2.1. Transport and storage	90.3	-5.1	98.1	-2.4
2.2. Accommodation	73.7	-6.3	91.8	-4.4
2.3. Information and communications	83.8	-9.0	89.8	-7.1
2.4. Professional, scientific and technical activities	79.0	-9.2	87.0	-9.2
2.5. Administrative and support service activities	74.3	-11.0	89.3	-7.9

A more detailed analysis showed the activities that registered the highest and lowest decreases in February.

Activities with the highest annual rates of the Services Sector turnover

Activity (elemental aggregate)	Original Index	Annual rate (%)
Rail transport	89.1	-1.5
Wholesale of agricultural raw materials and live animals	95.0	-1.5
Wholesale of food, beverages and tobacco	83.4	-2.7
Warehousing and support activities for transportation	98.5	-2.9

Activities with the lowest annual rates of the Services Sector turnover

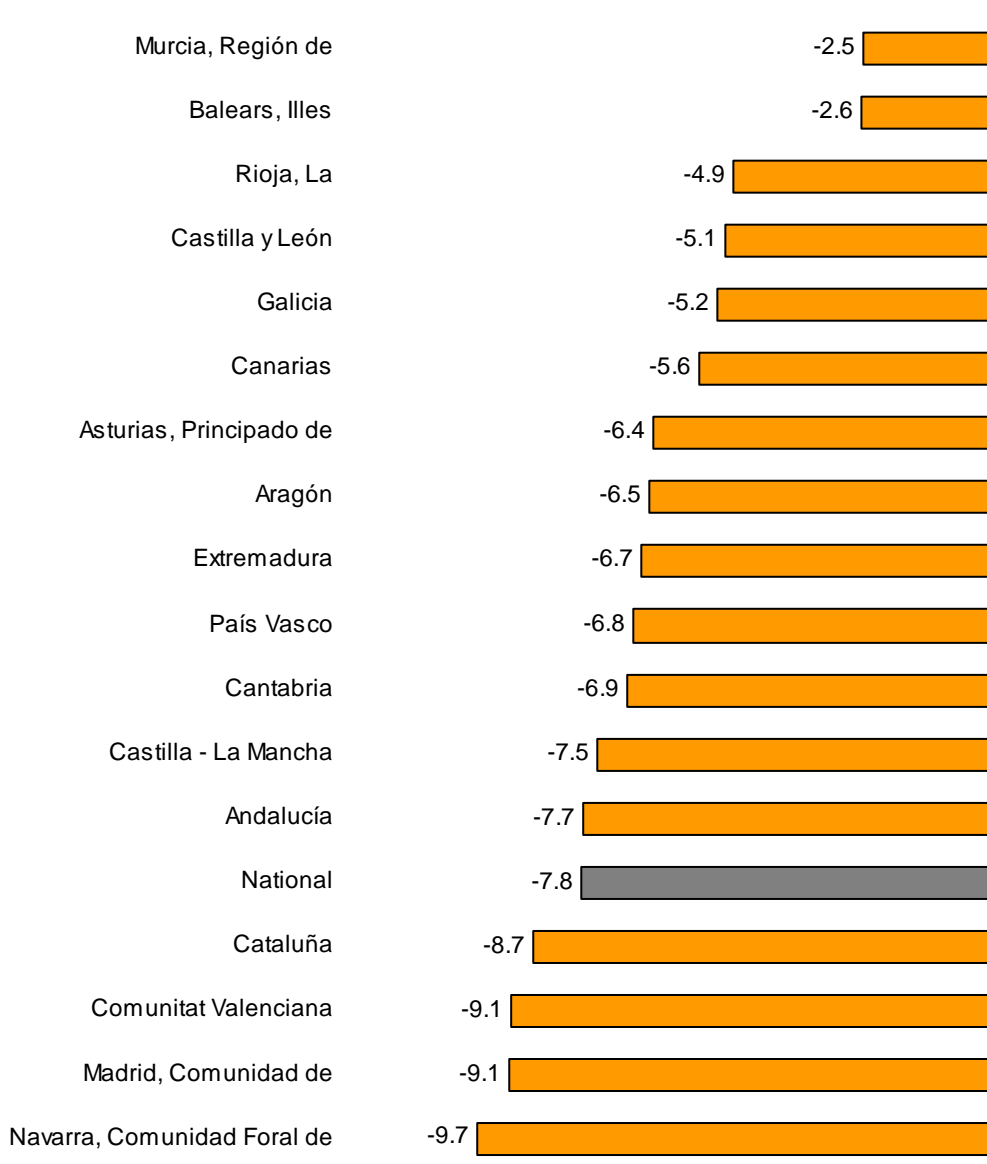
Activity (elemental aggregate)	Original Index	Annual rate (%)
Sale of motor vehicles	64.0	-20.9
Office administrative and other business support activities	83.1	-16.3
Travel agencies and tour operator services	50.6	-16.0
Advertising and market research	70.8	-14.6

Results by Autonomous Community. Annual turnover variation rates

All Autonomous Communities presented a negative performance of Turnover in the market Service Sector in February.

The lowest decreases were registered in Región de Murcia (-2.5%) and Illes Balears (-2.6%). In turn, those registering the greatest decreases were Comunidad Foral de Navarra (-9.7%) and Comunitat Valenciana and Comunidad de Madrid (both of them with -9.1%).

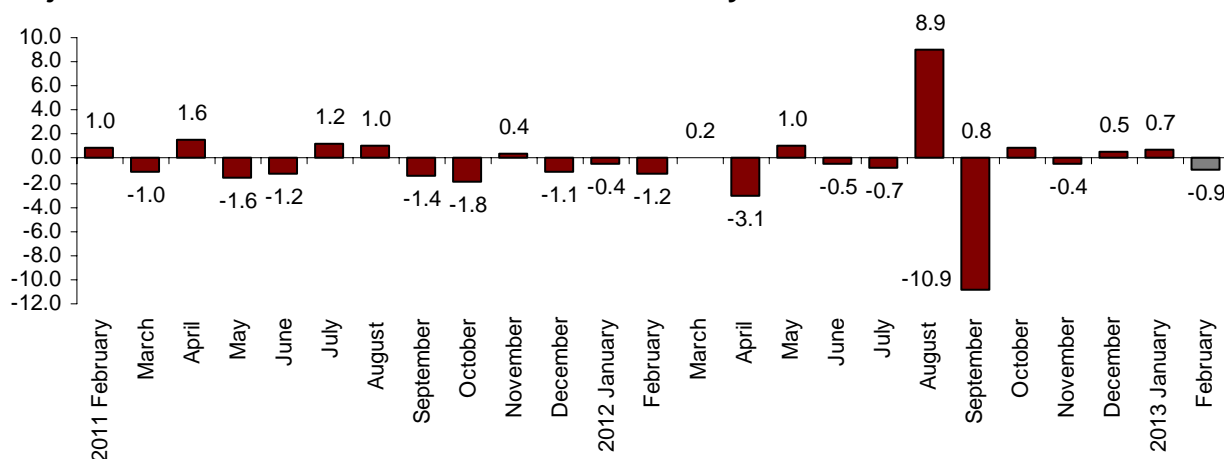
General Index by Autonomous Community Turnover Annual Rate



Monthly performance of the Services Sector Turnover adjusted for seasonal and calendar effect

After eliminating the seasonal and calendar effect, the annual variation of the General Index of market Services Sector Turnover between February and January stood at -0.9% . This rate was more than one and a half points lower than that in January.

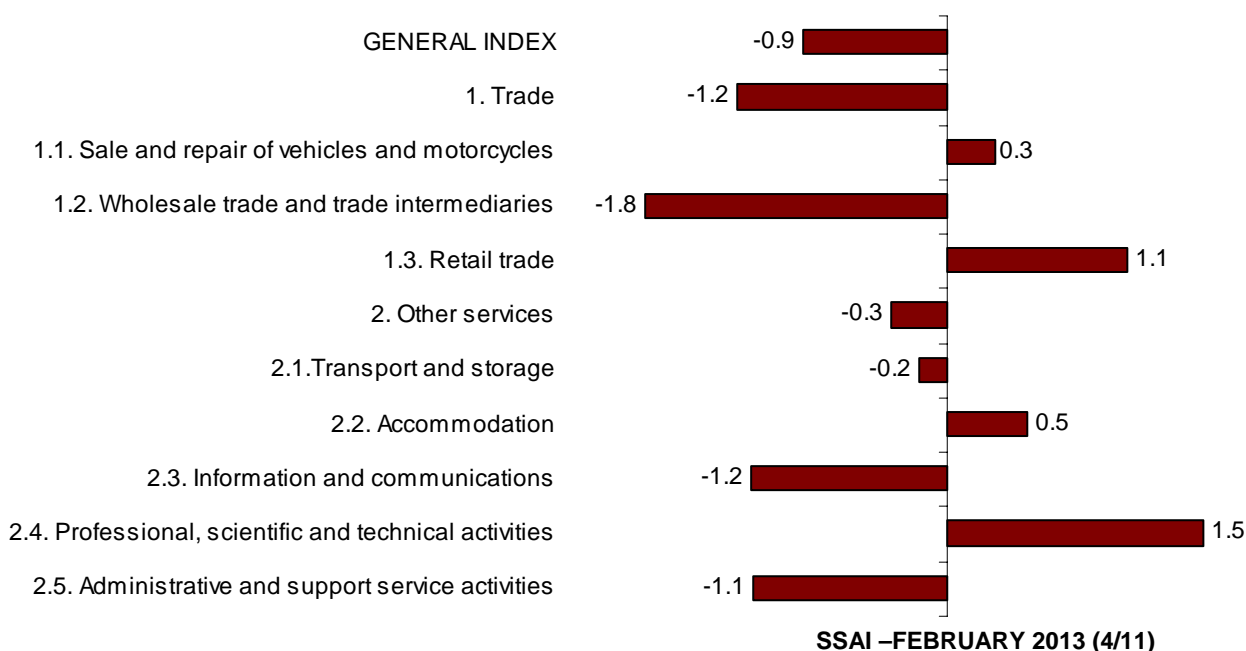
General Index of the turnover for the Market Services Sector Adjusted for seasonal and calendar effects. Monthly Rate



Monthly performance of the Turnover by sectors adjusted for seasonal and calendar effect

After eliminating the seasonal and calendar effect, the annual variation of Trade stood at -1.2% and that of Other Services at -0.3% . Four sectors registered a positive monthly rate: *Sale and repair of vehicles and motorcycles* (0.3%), *Accommodation* (0.5%), *Retail trade* (1.1%) and *Professional, scientific and technical activities* (1.5%).

General turnover Index and by sectors Adjusted for seasonal and calendar effects. Monthly rate



Performance of occupation

Employment in the market Services Sector experienced an annual variation of –2.6% in February, as compared with the same month of the last year. This rate was four tenths above that registered in January.

Trade registered a variation of –2.3% and Other Services registered a variation of –2.8%.

By sectors, *Retail trade* and *Wholesale trade and trade* registered the slightest decreases (-2.0% and –2.1%, respectively).

In turn, *Sale and repair of vehicles and motorcycles* (-4.4%) and *Information and communications* (-3.9%) registered the greatest decreases.

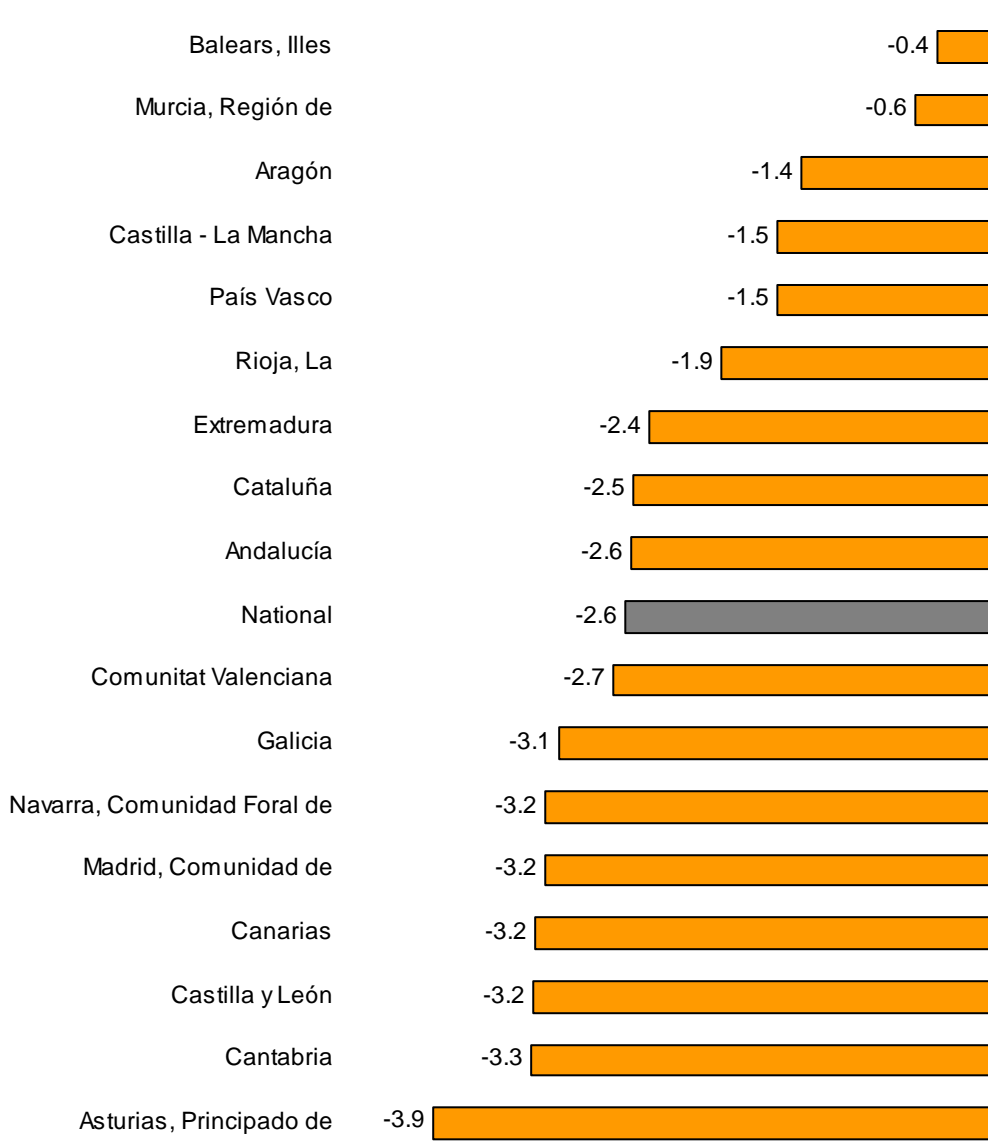
National Indices of occupation by sector

	Index	Monthly rate (%)	Annual rate (%)
GENERAL INDEX	93.7	-0.5	-2.6
1. Trade	95.0	-0.9	-2.3
1.1. Sale and repair of vehicles and motorcycles	89.1	0.2	-4.4
1.2. Wholesale trade	96.3	-1.7	-2.1
1.3. Retail trade	95.2	-0.7	-2.0
2. Other services	92.7	-0.1	-2.8
2.1. Transport and storage	93.1	-0.3	-3.0
2.2. Accommodation	90.5	0.5	-2.6
2.3. Information and communications	94.4	-0.4	-3.9
2.4. Professional, scientific and technical activities	94.5	-0.1	-2.5
2.5. Administrative and support service activities	92.5	-0.6	-2.8

Results by Autonomous Community. Variation rates of occupation

All Autonomous Communities registered negative annual rates in employment in February. The slightest decreases were in Illes Balears (-0.4%) and Región de Murcia -0.6%). In turn, the greatest decrease was registered in Principado de Asturias.

General Index by Autonomous Community Annual rate of occupation



Services Sector Activity Indicators. Base 2010 February 2013

Provisional data

1. Monthly turnover indices by sector

	Index	% variation		
		Monthly	Annual	Year-to-date average
GENERAL INDEX	81.5	-5.0	-7.8	-6.2
1. TRADE	81.6	-7.4	-7.8	-5.9
1.1. SALE AND REPAIR OF VEHICLES	66.2	5.7	-19.2	-18.2
- Sale of motor vehicles	64.0	8.4	-20.9	-20.1
- Maintenance and repair of motor vehicles	78.6	-5.6	-10.0	-8.9
1.2. WHOLESALE TRADE AND COMMISSION TRADE	85.1	-4.4	-6.1	-3.5
- Wholesale on a fee or contract basis	96.6	1.6	-5.1	-4.5
- Wholesale of agricultural raw materials and live animals	95.0	-4.2	-1.5	0.3
- Wholesale of food, beverages and tobacco	83.4	-6.4	-2.7	0.4
- Wholesale of household goods	91.1	5.0	-3.8	-3.3
- Wholesale of information and communication equipment	66.0	-8.9	-5.4	-4.9
- Wholesale of other machinery, equipment and supplies	77.1	-3.7	-10.7	-8.4
- Other specialised wholesale trade	87.5	-9.7	-10.6	-6.2
- Non-specialised wholesale trade	84.6	3.0	-6.5	-7.5
1.3. RETAIL TRADE	80.2	-14.8	-7.4	-6.5
2. OTHER SERVICES	81.2	-0.4	-7.7	-6.7
2.1. TRANSPORTATION AND STORAGE SERVICES	90.3	-0.8	-5.1	-3.0
Land transport	88.3	-0.5	-5.3	-3.7
- Rail transport	89.1	8.2	-1.5	-2.3
- Taxi operation	84.2	-3.0	-6.9	-6.0
- Other passenger land transport	87.0	-0.7	-10.3	-8.9
- Freight transport by road and removal services	88.9	-1.1	-4.5	-2.6
Water transport	68.7	7.7	-6.6	-4.4
Air transport	74.2	-9.8	-13.6	-9.4
Warehousing and support activities for transportation	98.5	0.9	-2.9	-0.7
Post and courier activities	88.1	-5.7	-6.8	-4.4
2.2. ACCOMMODATION AND FOOD SERVICES ACTIVITIES	73.7	-1.0	-6.3	-6.7
Accommodation	68.0	12.6	-4.8	-6.1
Food and beverage service activities	76.5	-5.1	-6.8	-6.9
2.3. INFORMATION AND COMMUNICATION	83.8	-3.9	-9.0	-7.4
Publishing activities	71.9	-4.9	-4.5	-4.0
Motion picture, television programme production and music publishing activities	83.7	-2.2	-14.3	-9.7
Programming and broadcasting activities	80.3	-2.9	-12.4	-10.4
Telecommunications	77.5	-2.1	-10.2	-10.8
Computer programming, consultancy and related activities	100.4	-6.6	-6.6	-2.2
Information service activities	90.2	-4.5	-12.2	-8.9
2.4. PROFESSIONAL, SCIENTIFIC AND TECHNICAL ACTIVITIES	79.0	3.3	-9.2	-10.0
Legal, accounting and management consulting activities	87.3	0.2	-7.9	-8.6
Architectural and engineering activities; technical testing and analysis	77.0	12.6	-7.2	-9.0
Advertising and market research	70.8	2.5	-14.6	-14.6
Other professional scientific and technical activities	73.0	-15.2	-8.0	-6.6
2.5. ADMINISTRATIVE AND SUPPORT SERVICE ACTIVITIES	74.3	2.9	-11.0	-8.7
Employment activities	82.6	-3.8	-5.6	-3.7
Travel agencies and tour operator services	50.6	7.4	-16.0	-12.6
Security and investigation activities	92.1	-4.6	-5.2	-4.3
Cleaning activities	92.4	0.6	-4.1	-4.5
Office administrative and other business support activities	83.1	7.6	-16.3	-12.8

2. National turnover indices, adjusted for the calendar effect

	Adjusted index	% variation		
		Monthly	Annual	Year-to-date average
GENERAL INDEX	82.1	-3.5	-5.1	-5.2
1. Trade	82.3	-5.6	-4.8	-4.9
1.1. Sale and repair of vehicles	66.9	9.4	-14.7	-16.8
1.2. Wholesale trade	85.9	-2.4	-3.2	-2.7
1.3. Retail trade	80.7	-13.2	-4.7	-5.8
2. Other Services	81.7	0.7	-5.7	-5.9
2.1. Transportation and storage	90.9	0.8	-2.6	-2.1
2.2. Accommodation and food service activities	74.0	-0.8	-4.2	-5.6
2.3. Information and communication	84.2	-2.9	-7.1	-6.6
2.4. Professional, scientific and technical activities	79.1	3.9	-9.0	-10.0
2.5. Administrative and support service activities	74.9	4.2	-8.2	-7.4

3. National turnover indices, adjusted for seasonal effects and by calendar

	index	% variation		
		Monthly	Annual	Year-to-date average
GENERAL INDEX	90.1	-0.9	-5.2	-5.3
1. Trade	89.5	-1.2	-4.8	-5.1
1.1. Sale and repair of vehicles	69.4	0.3	-14.8	-16.9
1.2. Wholesale trade	92.0	-1.8	-3.4	-3.0
1.3. Retail trade	91.5	1.1	-4.7	-5.8
2. Other Services	91.1	-0.3	-5.9	-6.0
2.1. Transportation and storage	98.1	-0.2	-2.4	-2.6
2.2. Accommodation and food service activities	91.8	0.5	-4.4	-5.6
2.3. Information and communication	89.8	-1.2	-7.1	-6.7
2.4. Professional, scientific and technical activities	87.0	1.5	-9.2	-10.1
2.5. Administrative and support service activities	89.3	-1.1	-7.9	-7.2

4. National turnover indices Seasonally adjusted

		% variation		
		Annual ¹	Quarterly ²	Monthly ³
	2009	-13.6		
	2010	0.8		
	2011	-1.0		
	2012	-6.1		
	2013	-5.3		
2011	TI	0.0		0.1
	TII	-2.0		-0.3
	TIII	0.6		0.1
	TIV	-2.6		-2.5
2012	TI	-4.4		-1.7
	TII	-6.9		-2.9
	TIII	-5.7		1.3
	TIV	-7.3		-4.1
2013	TI	-5.3		0.5
2012	FEB	-5.5		-1.2
	MAR	-4.3		0.2
	APR	-8.7		-3.1
	MAY	-6.2		1.0
	JUN	-5.6		-0.5
	JUL	-7.4		-0.7
	AUG	-0.1		8.9
	SEP	-9.8		-10.9
	OCT	-7.3		0.8
	NOV	-8.1		-0.4
	DEC	-6.6		0.5
2013	JAN	-5.5		0.7
	FEB	-5.2		-0.9

Note:

¹ **Annual rate:** Variation of a period over the same period of the previous year

² **Quarterly rate:** Variation of a quarter over the previous quarter. In the current quarter it is the average to date over the previous quarter

³ **Monthly rate:** Variation of a month over the previous month

5. National employed personnel indices by branch of activity

	Index	% variation		
		Monthly	Annual	Year-to-date average
GENERAL INDEX	93.7	-0.5	-2.6	-2.8
1. TRADE	95.0	-0.9	-2.3	-2.3
1.1. SALE AND REPAIR OF VEHICLES	89.1	0.2	-4.4	-4.8
- Sale of motor vehicles	86.4	-0.1	-5.8	-6.2
- Maintenance and repair of motor vehicles	92.3	0.5	-2.9	-3.3
1.2. WHOLESALE TRADE AND COMMISSION TRADE	96.3	-1.7	-2.1	-2.0
- Wholesale on a fee or contract basis	93.8	-2.5	-3.0	-2.2
- Wholesale of agricultural raw materials and live animals	98.3	0.9	-2.3	-2.4
- Wholesale of food, beverages and tobacco	103.8	-2.0	-0.2	-0.3
- Wholesale of household goods	94.5	-1.9	-0.7	-0.3
- Wholesale of information and communication equipment	95.3	-1.2	-3.8	-3.5
- Wholesale of other machinery, equipment and supplies	91.0	-1.4	-5.0	-4.7
- Other specialised wholesale trade	90.7	-1.1	-4.2	-4.5
- Non-specialised wholesale trade	95.1	-1.1	-5.5	-5.1
1.3. RETAIL TRADE	95.2	-0.7	-2.0	-2.2
2. OTHER SERVICES	92.7	-0.1	-2.8	-3.1
2.1. TRANSPORTATION AND STORAGE SERVICES	93.1	-0.3	-3.0	-3.1
Land transport	93.3	-0.4	-3.0	-2.9
- Rail transport	99.3	-0.1	-1.1	-1.1
- Taxi operation	95.1	0.0	-3.2	-3.2
- Other passenger land transport	96.9	0.3	-2.1	-2.2
- Freight transport by road and removal services	91.6	-0.7	-3.3	-3.2
Water transport	79.7	-1.1	-11.0	-11.3
Air transport	92.9	0.1	-4.0	-4.0
Warehousing and support activities for transportation	95.6	-0.1	-2.0	-2.4
Post and courier activities	86.9	0.2	-4.5	-4.9
2.2. ACCOMMODATION AND FOOD SERVICES ACTIVITIES	90.5	0.5	-2.6	-3.0
Accommodation	76.6	3.2	-5.0	-6.0
Food and beverage service activities	94.4	-0.1	-2.0	-2.3
2.3. INFORMATION AND COMMUNICATION	94.4	-0.4	-3.9	-3.8
Publishing activities	84.5	-1.4	-7.4	-7.1
Motion picture, television programme production and music publishing activities	80.2	3.4	-12.9	-14.0
Programming and broadcasting activities	87.8	-0.7	-10.4	-10.5
Telecommunications	90.4	-0.4	-4.5	-4.4
Computer programming, consultancy and related activities	101.6	-0.5	-0.8	-0.7
Information service activities	97.1	-2.0	-3.1	-2.6
2.4. PROFESSIONAL, SCIENTIFIC AND TECHNICAL ACTIVITIES	94.5	-0.1	-2.5	-2.7
Legal, accounting and management consulting activities	97.8	0.2	-1.3	-1.4
Architectural and engineering activities; technical testing and analysis	90.7	0.1	-4.1	-4.3
Advertising and market research	89.8	-2.2	-4.8	-4.9
Other professional scientific and technical activities	94.6	-0.3	-1.6	-1.5
2.5. ADMINISTRATIVE AND SUPPORT SERVICE ACTIVITIES	92.5	-0.6	-2.8	-3.3
Employment activities	88.1	-3.5	-2.5	-3.2
Travel agencies and tour operator services	86.0	-1.5	-5.1	-4.5
Security and investigation activities	92.2	-0.8	-3.6	-3.8
Cleaning activities	94.1	0.3	-2.1	-3.1
Office administrative and other business support activities	93.5	0.1	-3.6	-3.6

6. General turnover index by Autonomous Community

	Index	% variation		
		Monthly	Annual	Year-to-date average
NATIONAL INDEX	81.5	-5.0	-7.8	-6.2
Andalucía	80.8	-7.0	-7.7	-6.0
Aragón	83.7	-4.5	-6.5	-5.2
Asturias, Principado de	78.6	-7.1	-6.4	-5.2
Balears, Illes	63.8	-0.8	-2.6	-2.1
Canarias	86.4	-7.9	-5.6	-5.0
Cantabria	80.4	-8.6	-6.9	-4.7
Castilla y León	83.7	-6.7	-5.1	-3.8
Castilla-La Mancha	80.6	-4.5	-7.5	-6.0
Cataluña	81.9	-4.3	-8.7	-7.1
Comunitat Valenciana	82.8	-6.8	-9.1	-7.1
Extremadura	74.7	-10.4	-6.7	-4.5
Galicia	86.6	-0.9	-5.2	-3.1
Madrid, Comunidad de	80.7	-4.2	-9.1	-7.4
Murcia, Región de	86.6	-0.7	-2.5	-2.2
Navarra, Comunidad Foral de	77.8	-6.5	-9.7	-7.3
País Vasco	82.0	-6.1	-6.8	-5.8
Rioja, La	84.6	-4.3	-4.9	-2.5

7. General employed personnel index by Autonomous Community

	Index	% variation		
		Monthly	Annual	Year-to-date average
NATIONAL INDEX	93.7	-0.5	-2.6	-2.8
Andalucía	93.6	-0.3	-2.6	-3.0
Aragón	92.7	-0.4	-1.4	-1.7
Asturias, Principado de	91.7	-0.5	-3.9	-4.0
Balears, Illes	82.9	2.6	-0.4	-1.1
Canarias	95.6	0.2	-3.2	-3.4
Cantabria	92.4	-0.5	-3.3	-3.3
Castilla y León	93.6	-0.7	-3.2	-3.2
Castilla-La Mancha	92.8	0.3	-1.5	-2.2
Cataluña	94.1	-0.4	-2.5	-2.7
Comunitat Valenciana	94.9	-1.0	-2.7	-3.1
Extremadura	93.6	-0.5	-2.4	-2.4
Galicia	93.1	-1.0	-3.1	-2.9
Madrid, Comunidad de	93.6	-0.7	-3.2	-3.2
Murcia, Región de	95.6	-0.2	-0.6	-0.9
Navarra, Comunidad Foral de	93.1	-0.3	-3.2	-3.4
País Vasco	96.1	-0.7	-1.5	-1.6
Rioja, La	95.6	-0.4	-1.9	-2.1