

19 June 2013

Services Sector Activity Indicators (SSAI). Base 2010
April 2013. *Provisional data*

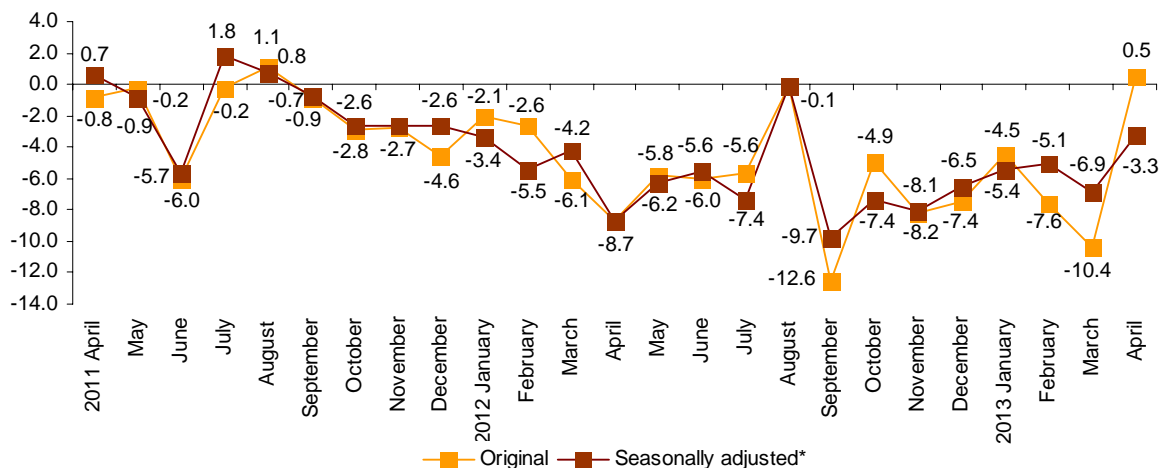
The annual rate of turnover for the market Services Sector stands at 0.5% in the original series and at –3.3% in the seasonally adjusted series

The monthly variation is 0.4% after adjusting for seasonal and calendar effects

The turnover for the market Services Sector registered a variation of 0.5% in April, as compared with the same month of the previous year, 10.9 points above that registered in March.

After adjusting for seasonal and calendar effects the annual rate is –3.3%, 3.6 points above that registered in March.

General index of the turnover for the Market Services Sector
Annual Rate



*Seasonally adjusted: adjusted for season and calendar effects.

Annual evolution of turnover for the Services Sector

Trade increased 1.5% while Other Services decreased 1.4%.

By sectors, *Transport and Storage* (3.9%), *Wholesale trade and trade intermediaries* (3.0%) and *Sale and repair of vehicles and motorcycles* (2.6%) presented positive rates. The rest of the sectors registered negative rates, *Accommodation* (-7,5%) and *Administrative and support service activities* (-4,6%) registered the greatest decreases.

After adjusting for seasonal and calendar effects, all sectors presented negative rates as compared with April of the previous year.

Annual rates of the national Turnover index by sector

	Original index	Seasonally adjusted index
	Annual rate (%)	Annual rate (%)
GENERAL INDEX	0.5	-3.3
1. Trade	1.5	-3.0
1.1. Sale and repair of vehicles and motorcycles	2.6	-7.4
1.2. Wholesale trade	3.0	-2.7
1.3. Retail trade	-1.2	-3.3
2. Other services	-1.4	-3.6
2.1. Transport and storage	3.9	-0.8
2.2. Accommodation	-7.5	-4.8
2.3. Information and communications	-2.5	-5.3
2.4. Professional, scientific and technical activities	-0.9	-6.1
2.5. Administrative and support service activities	-4.6	-3.6

A more detailed analysis showed the activities that registered the highest annual rates and those that registered the greatest decreases in April.

Activities with the greatest annual rates of the Services Sector turnover

Activity (Elementary aggregate)	Gross Index	Annual rate (%)
Freight transport by road and removal services	97.2	6.7
Wholesale on a fee or contract basis	100.9	6.1
Warehousing and support activities for transportation	108.4	6.1
Employment activities	88.4	5.6

Activities with the lowest annual rates of the Services Sector turnover

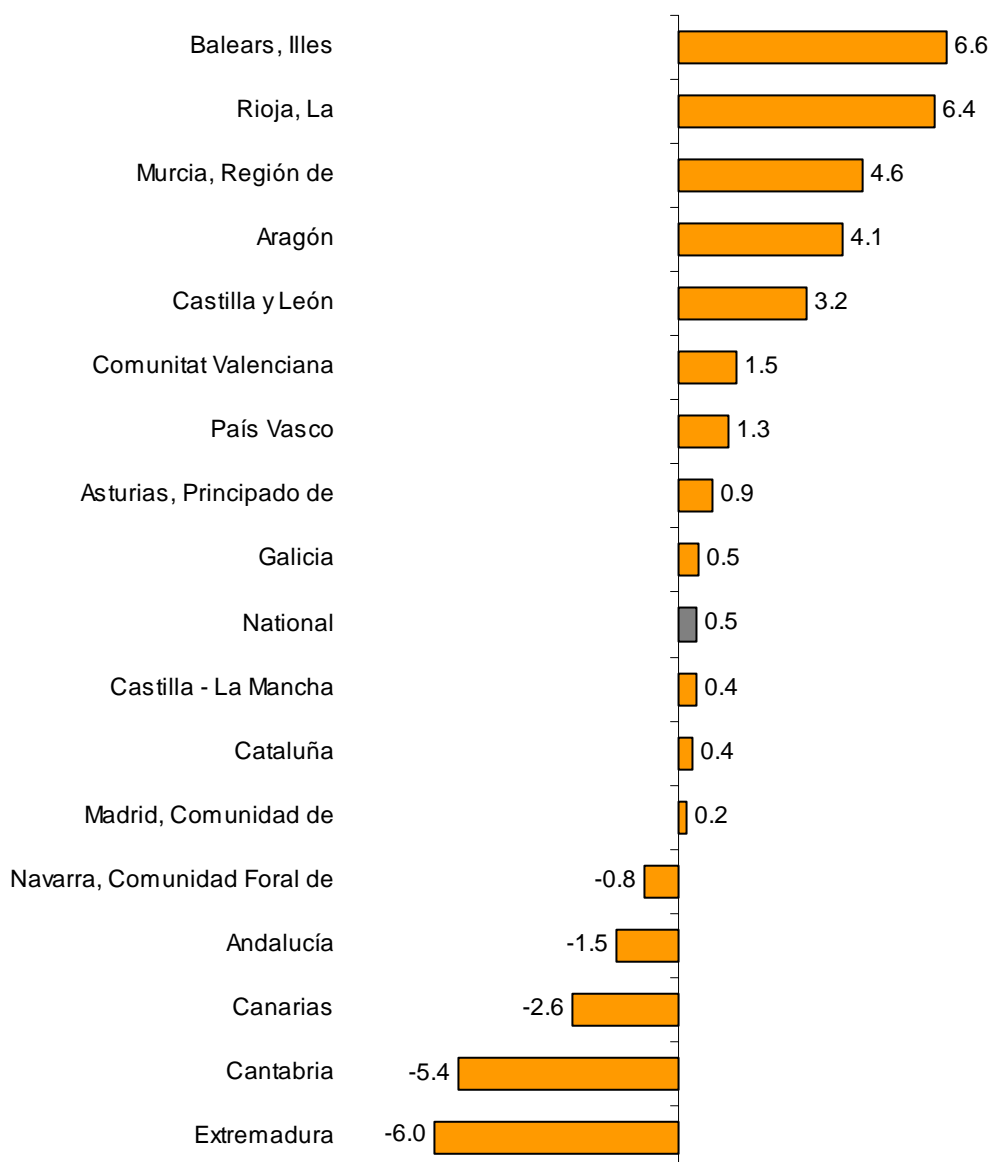
Activity (Elementary aggregate)	Gross Index	Annual rate (%)
Water transport	71.6	-15.2
Motion picture, television programme production and music publishing activities	90.8	-12.6
Accommodation	85.2	-10.8
Office administrative and other business support activities	81.2	-8.5

Results by Autonomous Community. Annual turnover variation rates

Illes Balears (6.6%) and La Rioja (6.4%) are the Communities that registered the highest positive rates of turnover in the market Service Sector in April.

In turn, the Communities that registered the greatest decreases were Extremadura (-6.0%) and Cantabria (-5.4%).

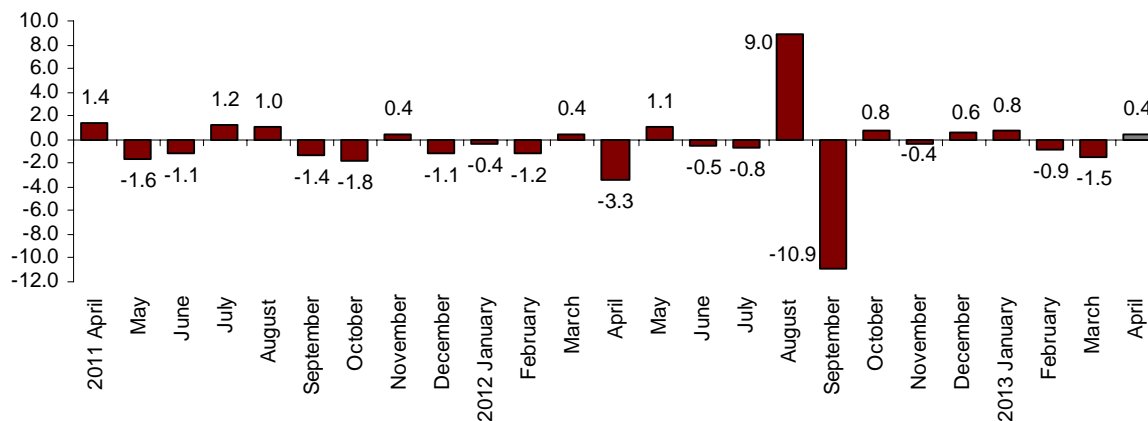
General Index by Autonomous Community Turnover Annual Rate



Monthly evolution of the Services Sector Turnover adjusted for seasonal and calendar effect

After eliminating the seasonal and calendar effect, the monthly variation of the General Index of market Services Sector Turnover between April and March stood at 0.4%. This rate was two points higher than that registered in March.

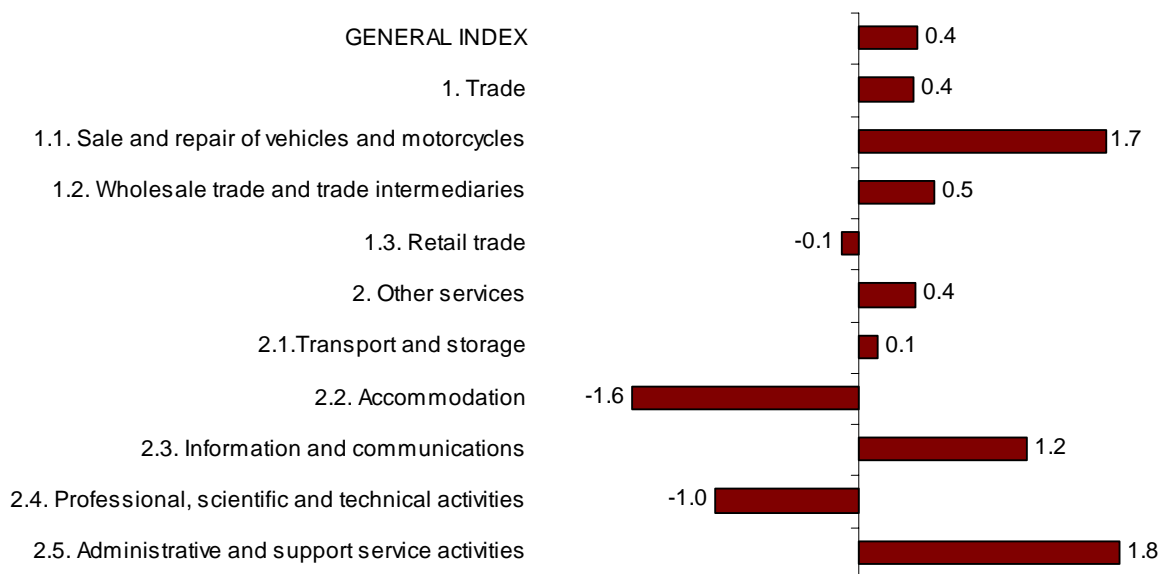
General index of the turnover for the Market Services Sector Adjusted for seasonal and calendar effects. Monthly Rate



Monthly evolution of the Turnover by sectors adjusted for seasonal and calendar effect

After eliminating the seasonal and calendar effect, the monthly variations of Trade and Other Services were positive (both at 0.4%). *Accommodation* (-1.6%), *Professional, scientific and technical activities* (-1.0%) and *Retail trade* (-0.1%) were the only sectors that registered negative rates.

General turnover Index and by sectors Adjusted for seasonal and calendar effects. Monthly rate



Evolution of occupation

Employment in the market Services Sector experienced a variation of –2.1% in April, as compared with the same month of last year. This rate remained the same as that registered in March.

Trade registered an annual variation of –2.3% and Other Services registered a variation of –1.9%.

All sectors registered negative rates, *Accommodation* and *Administrative and support service activities* (both at –1.5%) registered the lowest decrease. In turn, *Sale and repair of vehicles and motorcycles* (–4.2%) and *Information and communications* (–4.1%) registered the greatest decreases.

National Indices of employed personnel by sector

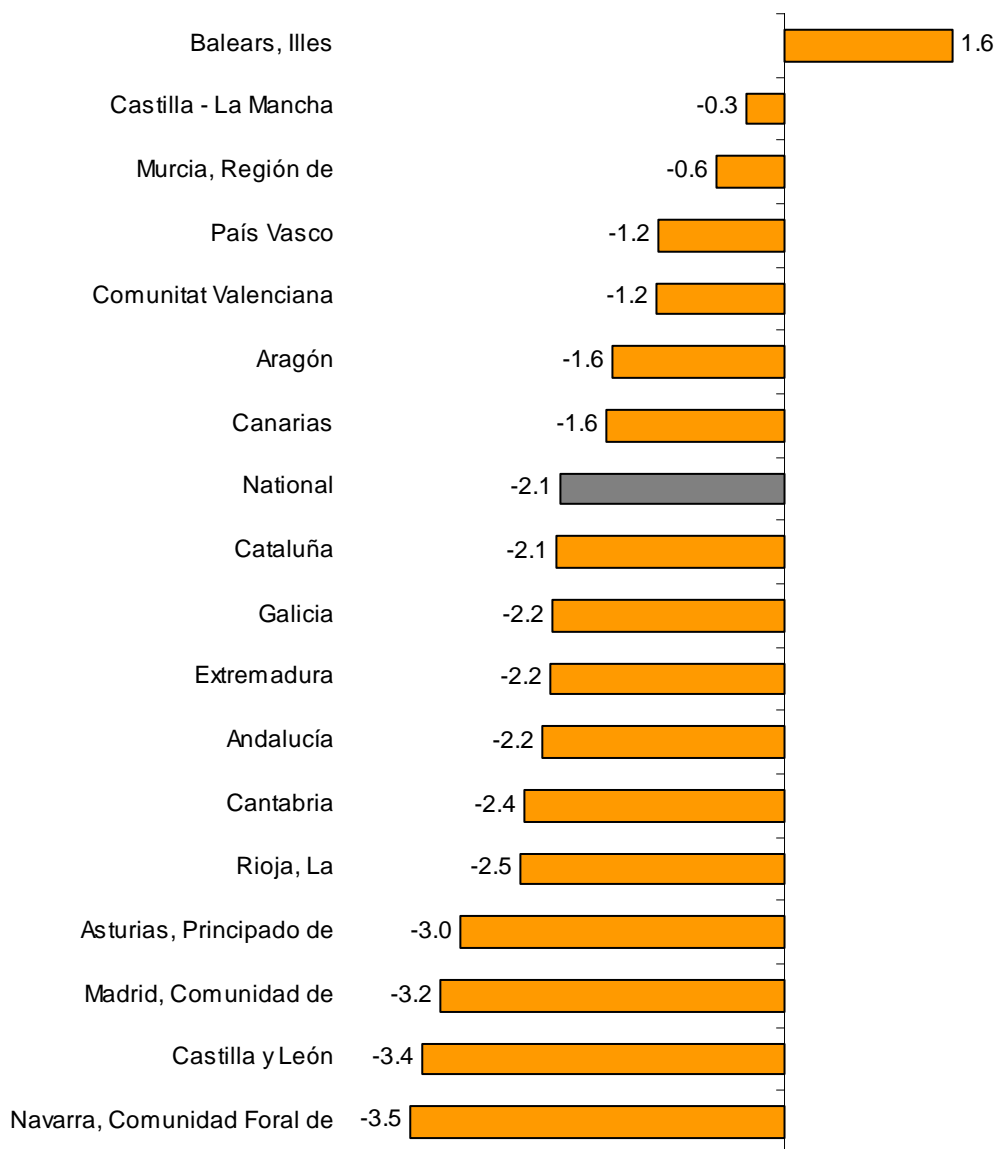
	Index	Monthly rate (%)	Annual rate (%)
GENERAL INDEX	94.5	0.2	-2.1
1. Trade	94.5	-0.3	-2.3
1.1. Sale and repair of vehicles and motorcycles	88.5	-0.2	-4.2
1.2. Wholesale trade	95.6	-0.5	-1.8
1.3. Retail trade	94.9	-0.1	-2.3
2. Other services	94.5	0.6	-1.9
2.1. Transport and storage	93.8	0.4	-1.9
2.2. Accommodation	96.0	1.6	-1.5
2.3. Information and communications	94.0	0.0	-4.1
2.4. Professional, scientific and technical activities	94.3	-0.1	-2.0
2.5. Administrative and support service activities	93.4	0.4	-1.5

Results by Autonomous Community. Variation rates of occupation

All Autonomous Communities presented negative rates in employment as compared with April of 2012 except Illes Balears (1.6%).

The greatest decreases were registered in Comunidad Foral de Navarra (-3.5%), Castilla y León (-3.4), Comunidad de Madrid (-3.2%) and Principado de Asturias (-3.0%).

**General Index by Autonomous Community
Annual rate of employed personnel**



Services Sector Activity Indicators. Base 2010

April 2013

Provisional data

1. Monthly turnover indices by sector

	Index	% variation		
		Monthly	Annual	Year-to-date average
GENERAL INDEX	89.6	3.1	0.5	-5.6
1. TRADE	89.0	3.0	1.5	-5.7
1.1. SALE AND REPAIR OF VEHICLES	73.7	4.8	2.6	-15.1
- Sale of motor vehicles	71.7	3.7	2.5	-16.4
- Maintenance and repair of motor vehicles	85.1	10.1	3.4	-8.1
1.2. WHOLESALE TRADE AND COMMISSION TRADE	92.0	3.2	3.0	-4.3
- Wholesale on a fee or contract basis	100.9	-6.3	6.1	-2.1
- Wholesale of agricultural raw materials and live animals	108.6	8.7	5.6	-0.8
- Wholesale of food, beverages and tobacco	91.9	-1.1	4.3	-0.6
- Wholesale of household goods	96.6	4.6	4.8	-3.6
- Wholesale of information and communication equipment	72.2	-2.2	5.3	-3.5
- Wholesale of other machinery, equipment and supplies	82.6	4.7	-2.5	-9.5
- Other specialised wholesale trade	93.6	6.6	0.7	-7.5
- Non-specialised wholesale trade	98.1	1.2	-4.4	-6.4
1.3. RETAIL TRADE	88.4	2.1	-1.2	-5.6
2. OTHER SERVICES	90.8	3.3	-1.4	-5.4
2.1. TRANSPORTATION AND STORAGE SERVICES	100.0	4.6	3.9	-1.9
Land transport	97.2	4.1	4.4	-2.4
- Rail transport	95.0	-6.7	-1.4	-0.4
- Taxi operation	93.6	3.7	-4.0	-5.5
- Other passenger land transport	100.0	6.0	-0.8	-7.7
- Freight transport by road and removal services	97.2	4.9	6.7	-1.2
Water transport	71.6	-5.9	-15.2	-9.3
Air transport	92.5	3.5	-4.8	-7.8
Warehousing and support activities for transportation	108.4	5.3	6.1	0.6
Post and courier activities	93.2	9.0	4.5	-5.1
2.2. ACCOMMODATION AND FOOD SERVICES ACTIVITIES	85.8	-2.3	-7.5	-5.3
Accommodation	85.2	0.2	-10.8	-4.8
Food and beverage service activities	86.7	-3.3	-6.2	-5.5
2.3. INFORMATION AND COMMUNICATION	89.2	1.4	-2.5	-6.9
Publishing activities	82.2	3.7	-0.3	-4.4
Motion picture, television programme production and music publishing activities	90.8	-7.5	-12.6	-12.3
Programming and broadcasting activities	90.9	-1.1	-4.2	-6.8
Telecommunications	80.0	-0.4	-4.6	-9.2
Computer programming, consultancy and related activities	107.4	5.9	2.6	-3.2
Information service activities	99.0	-0.8	-3.9	-7.2
2.4. PROFESSIONAL, SCIENTIFIC AND TECHNICAL ACTIVITIES	90.0	7.9	-0.9	-7.8
Legal, accounting and management consulting activities	100.3	12.4	2.0	-5.5
Architectural and engineering activities; technical testing and analysis	86.2	6.0	-0.7	-7.2
Advertising and market research	80.9	3.6	-5.0	-12.1
Other professional scientific and technical activities	87.2	6.6	-4.5	-8.1
2.5. ADMINISTRATIVE AND SUPPORT SERVICE ACTIVITIES	85.1	4.0	-4.6	-7.6
Employment activities	88.4	6.5	5.6	-2.9
Travel agencies and tour operator services	75.1	6.6	-7.0	-9.4
Security and investigation activities	95.8	1.9	1.6	-3.2
Cleaning activities	95.3	2.2	-3.4	-4.4
Office administrative and other business support activities	81.2	2.4	-8.5	-12.2

2. National turnover indices, adjusted for the calendar effect

	Adjusted index	% variation		
		Monthly	Annual	Year-to-date average
GENERAL INDEX	87.5	-2.8	-3.3	-5.1
1. Trade	86.4	-4.1	-3.0	-5.2
1.1. Sale and repair of vehicles	69.7	-7.7	-7.2	-14.1
1.2. Wholesale trade	88.7	-5.7	-2.8	-3.9
1.3. Retail trade	87.3	-0.8	-3.6	-5.2
2. Other Services	89.5	-0.2	-3.5	-5.0
2.1. Transportation and storage	97.7	-1.4	0.1	-1.4
2.2. Accommodation and food service activities	87.4	1.8	-4.8	-4.8
2.3. Information and communication	87.7	-3.0	-5.1	-6.5
2.4. Professional, scientific and technical activities	86.9	-0.1	-6.0	-7.8
2.5. Administrative and support service activities	85.6	4.7	-3.6	-6.9

3. National turnover indices, adjusted for seasonal effects and by calendar

	index	% variation		
		Monthly	Annual	Year-to-date average
GENERAL INDEX	89.1	0.4	-3.3	-5.2
1. Trade	88.0	0.4	-3.0	-5.2
1.1. Sale and repair of vehicles	70.6	1.7	-7.4	-14.2
1.2. Wholesale trade	89.8	0.5	-2.7	-4.0
1.3. Retail trade	90.5	-0.1	-3.3	-5.2
2. Other Services	91.3	0.4	-3.6	-5.1
2.1. Transportation and storage	98.4	0.1	-0.8	-1.7
2.2. Accommodation and food service activities	91.0	-1.6	-4.8	-4.9
2.3. Information and communication	89.6	1.2	-5.3	-6.6
2.4. Professional, scientific and technical activities	86.6	-1.0	-6.1	-7.9
2.5. Administrative and support service activities	90.3	1.8	-3.6	-6.8

4. National turnover indices Seasonally adjusted

		% variation		
		Annual ¹	Quarterly ²	Monthly ³
	2009	-13.6		
	2010	0.8		
	2011	-1.0		
	2012	-6.1		
	2013	-5.2		
2011	TII	-2.0		-0.3
	TIII	0.6		0.1
	TIV	-2.6		-2.5
2012	TI	-4.4		-1.7
	TII	-6.9		-2.9
	TIII	-5.7		1.3
	TIV	-7.3		-4.1
2013	TI	-5.8		0.0
	TII	-3.3		-0.9
2012	APR	-8.7		-3.3
	MAY	-6.2		1.1
	JUN	-5.6		-0.5
	JUL	-7.4		-0.8
	AUG	-0.1		9.0
	SEP	-9.7		-10.9
	OCT	-7.4		0.8
	NOV	-8.1		-0.4
	DEC	-6.5		0.6
2013	JAN	-5.4		0.8
	FEB	-5.1		-0.9
	MAR	-6.9		-1.5
	APR	-3.3		0.4

Note:

¹**Annual rate:** Variation of a period over the same period of the previous year

²**Quarterly rate:** Variation of a quarter over the previous quarter. In the current quarter it is the average to date over the previous quarter

³**Monthly rate:** Variation of a month over the previous month

5. National employed personnel indices by branch of activity

	Index	% variation		
		Monthly	Annual	Year-to-date average
GENERAL INDEX	94.5	0.2	-2.1	-2.4
1. TRADE	94.5	-0.3	-2.3	-2.3
1.1. SALE AND REPAIR OF VEHICLES	88.5	-0.2	-4.2	-4.7
- Sale of motor vehicles	85.4	-0.4	-6.1	-6.2
- Maintenance and repair of motor vehicles	91.8	0.0	-2.2	-3.1
1.2. WHOLESALE TRADE AND COMMISSION TRADE	95.6	-0.5	-1.8	-1.9
- Wholesale on a fee or contract basis	96.9	2.0	-0.4	-2.0
- Wholesale of agricultural raw materials and live animals	97.5	-0.8	-2.1	-1.8
- Wholesale of food, beverages and tobacco	101.1	-1.3	-0.1	-0.1
- Wholesale of household goods	93.9	-1.0	-1.2	-0.7
- Wholesale of information and communication equipment	95.9	-0.9	-2.9	-3.1
- Wholesale of other machinery, equipment and supplies	91.5	1.0	-4.1	-4.7
- Other specialised wholesale trade	90.4	-0.1	-3.9	-4.4
- Non-specialised wholesale trade	93.2	-0.8	-6.1	-5.6
1.3. RETAIL TRADE	94.9	-0.1	-2.3	-2.2
2. OTHER SERVICES	94.5	0.6	-1.9	-2.5
2.1. TRANSPORTATION AND STORAGE SERVICES	93.8	0.4	-1.9	-2.6
Land transport	94.3	0.4	-1.5	-2.3
- Rail transport	98.9	-0.5	-0.8	-0.8
- Taxi operation	97.8	1.6	-1.5	-2.2
- Other passenger land transport	98.1	0.6	-2.0	-2.2
- Freight transport by road and removal services	92.3	0.2	-1.4	-2.5
Water transport	86.5	4.5	-6.4	-9.3
Air transport	93.0	-0.2	-2.0	-3.1
Warehousing and support activities for transportation	95.8	0.3	-2.4	-2.3
Post and courier activities	87.2	0.1	-3.1	-4.0
2.2. ACCOMMODATION AND FOOD SERVICES ACTIVITIES	96.0	1.6	-1.5	-1.9
Accommodation	91.3	8.0	-3.6	-4.1
Food and beverage service activities	97.5	0.1	-1.0	-1.4
2.3. INFORMATION AND COMMUNICATION	94.0	0.0	-4.1	-4.0
Publishing activities	83.9	-0.6	-6.9	-7.1
Motion picture, television programme production and music publishing activities	78.8	-1.9	-12.6	-13.2
Programming and broadcasting activities	88.1	0.0	-8.6	-9.8
Telecommunications	88.7	-1.4	-5.6	-4.8
Computer programming, consultancy and related activities	101.7	0.7	-1.4	-1.1
Information service activities	96.6	0.1	-3.3	-3.1
2.4. PROFESSIONAL, SCIENTIFIC AND TECHNICAL ACTIVITIES	94.3	-0.1	-2.0	-2.5
Legal, accounting and management consulting activities	97.9	-0.1	-0.2	-0.9
Architectural and engineering activities; technical testing and analysis	89.8	-0.6	-4.0	-4.2
Advertising and market research	90.1	-0.4	-5.1	-5.0
Other professional scientific and technical activities	95.0	1.2	-1.2	-1.8
2.5. ADMINISTRATIVE AND SUPPORT SERVICE ACTIVITIES	93.4	0.4	-1.5	-2.5
Employment activities	89.7	-0.6	0.8	-1.6
Travel agencies and tour operator services	88.2	1.5	-4.4	-4.7
Security and investigation activities	92.0	-0.4	-3.3	-3.5
Cleaning activities	94.4	0.5	-1.1	-2.2
Office administrative and other business support activities	95.8	1.0	-2.4	-2.9

6. General turnover index by Autonomous Community

	Index	% variation		
		Monthly	Annual	Year-to-date average
NATIONAL INDEX	89.6	3.1	0.5	-5.6
Andalucía	89.0	0.6	-1.5	-5.6
Aragón	91.8	2.6	4.1	-4.3
Asturias, Principado de	86.5	3.3	0.9	-5.0
Balears, Illes	88.7	15.9	6.6	0.8
Canarias	90.6	-2.5	-2.6	-4.9
Cantabria	83.1	0.3	-5.4	-7.0
Castilla y León	94.0	4.8	3.2	-3.1
Castilla-La Mancha	88.4	2.8	0.4	-5.3
Cataluña	92.1	4.2	0.4	-6.1
Comunitat Valenciana	91.8	2.4	1.5	-5.4
Extremadura	81.6	3.6	-6.0	-8.1
Galicia	92.9	6.0	0.5	-5.0
Madrid, Comunidad de	86.8	2.6	0.2	-6.8
Murcia, Región de	95.8	5.8	4.6	-2.4
Navarra, Comunidad Foral de	86.2	3.4	-0.8	-6.6
País Vasco	88.3	2.8	1.3	-5.6
Rioja, La	94.8	3.9	6.4	-0.3

7. General employed personnel index by Autonomous Community

	Index	% variation		
		Monthly	Annual	Year-to-date average
NATIONAL INDEX	94.5	0.2	-2.1	-2.4
Andalucía	94.5	0.2	-2.2	-2.6
Aragón	92.5	0.3	-1.6	-1.8
Asturias, Principado de	92.0	0.0	-3.0	-3.6
Balears, Illes	95.2	8.0	1.6	0.4
Canarias	96.2	-0.3	-1.6	-2.5
Cantabria	94.0	-0.2	-2.4	-2.8
Castilla y León	93.6	-0.2	-3.4	-3.3
Castilla-La Mancha	93.2	0.3	-0.3	-1.3
Cataluña	95.3	0.4	-2.1	-2.4
Comunitat Valenciana	94.8	-0.8	-1.2	-2.1
Extremadura	94.2	0.4	-2.2	-2.5
Galicia	93.7	0.3	-2.2	-2.7
Madrid, Comunidad de	93.7	-0.1	-3.2	-3.2
Murcia, Región de	96.5	0.4	-0.6	-0.7
Navarra, Comunidad Foral de	94.1	0.6	-3.5	-3.5
País Vasco	96.7	0.2	-1.2	-1.4
Rioja, La	95.3	-0.5	-2.5	-2.3