

18 June 2014

Services Sector Activity Indicators (SSAI). Base 2010
April 2014. *Provisional data*

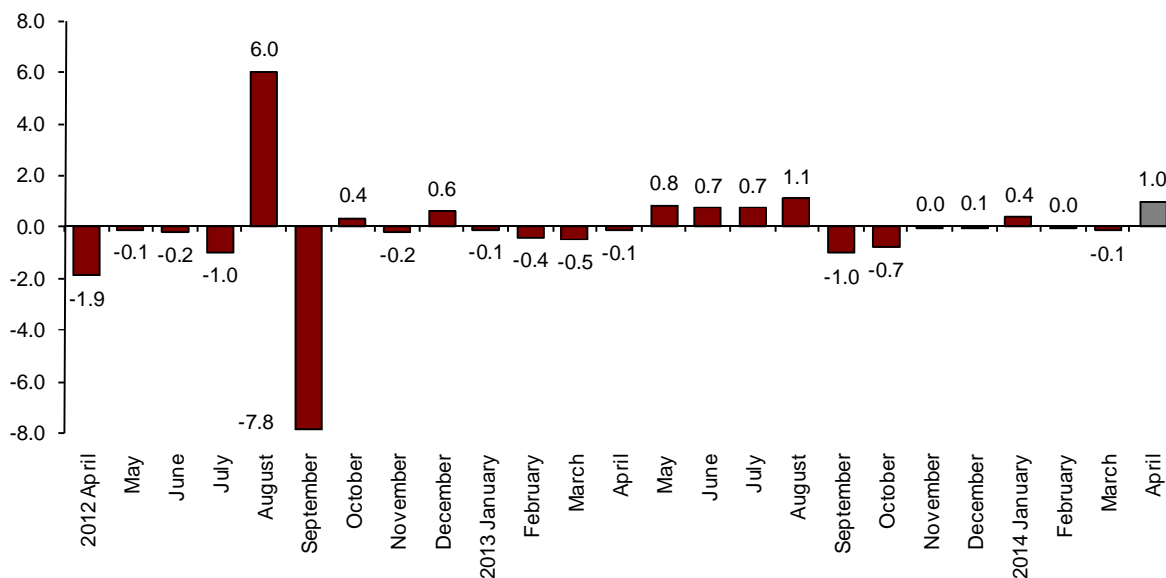
The monthly variation of turnover for the market Services Sector is 1.0% after adjusting for seasonal and calendar effects

The annual rate of turnover stands at 3.0% in the seasonally and calendar adjusted series and at 1.9% in the original series

Monthly evolution of the turnover for the market Services Sector

The monthly variation of the general index of the turnover for the market Services Sector between April and March 2014 was 1.0%, after adjusting for seasonally and calendar effects. This rate was one point and a tenth over that registered in March.

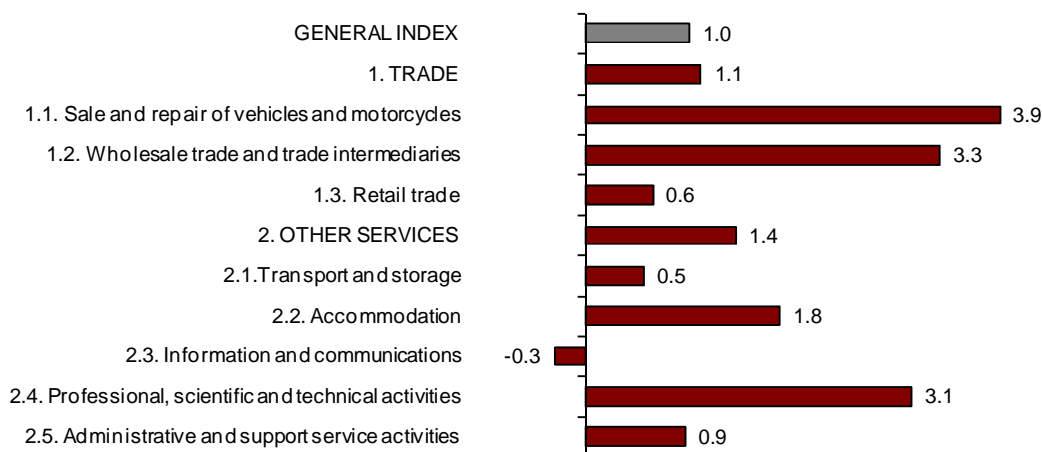
**General index of the turnover for the Market Services Sector
Adjusted for seasonal and calendar effects. Monthly rate**



After adjusting for seasonal and calendar effects, Trade registered a monthly variation of 1.1% and Other Services registered a variation of 1.4%.

All sectors increased their turnover as compared with March, except for *Information and communication* (−0.3%). The sectors registering the greatest increases were *Sale and repair of motor vehicles and motorcycles* (3.9%), *Wholesale trade and trade intermediaries* (3.3%) and *Professional, scientific and technical activities* (3.1%).

**General and by sectors turnover Index
Adjusted for seasonal and calendar effects. Monthly rate**



A more detailed analysis showed the activities that registered the highest monthly rates and those that registered the greatest decreases in April.

**Activities with the greatest monthly rates of the Services Sector turnover index
adjusted for seasonal and calendar effects**

Activity (CNAE-2009 groups)	Monthly rate(%)
Other professional scientific and technical activities	7.0
Advertising and market research	6.8
Sale and repair of vehicles	3.9

**Activities with the lowest monthly rates of the Services Sector turnover index
adjusted for seasonal and calendar effects**

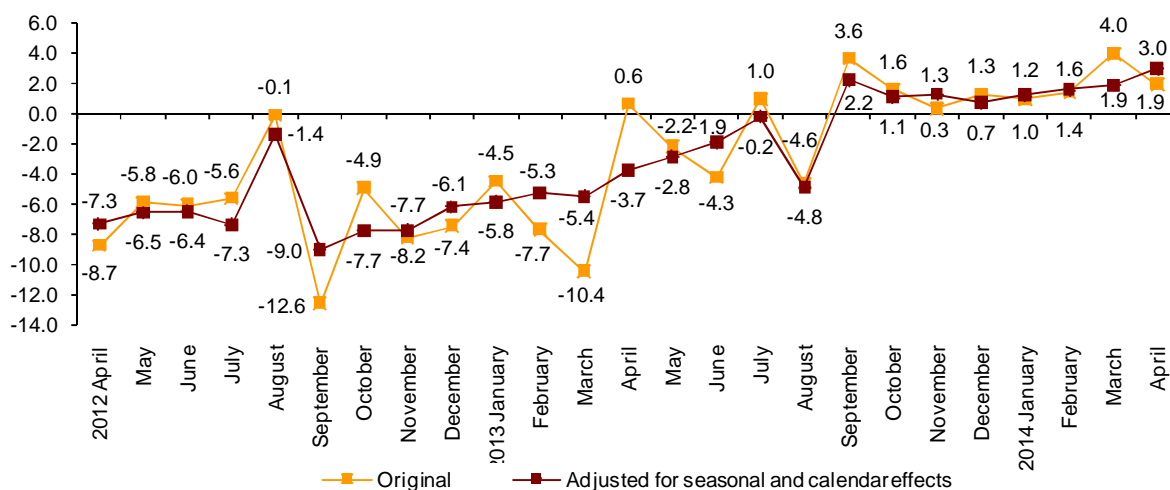
Activity (CNAE-2009 groups)	Monthly rate(%)
Telecommunications	-2.0
Water transport	-0.5
Travel agencies and tour operator services	-0.5

Annual turnover evolution rates for the Market Services sector

In April, the general Index of the turnover for the Market Services sector, after adjusting for seasonally and calendar effects, registered a variation of 3.0%, as compared with the same month of 2013. This rate was one point and a tenth over than that registered in March.

The original series registered an annual variation of 1.9%, that is, 2.1 points below that recorded in March.

General index of the turnover for the Market Services Sector
Annual Rate



After adjusting for seasonal and calendar effects, *Trade* increased 3.6% and *Other services* did so by 2.2%, as compared with the same month of the previous year.

All sectors registered positive annual rates, except for *Information and communications* (-1.8%). *Sale and repair of motor vehicles and motorcycles* (11.6%) recorded the greatest increase.

Annual rates of the Turnover index for the Market Services Sector: General and by sector

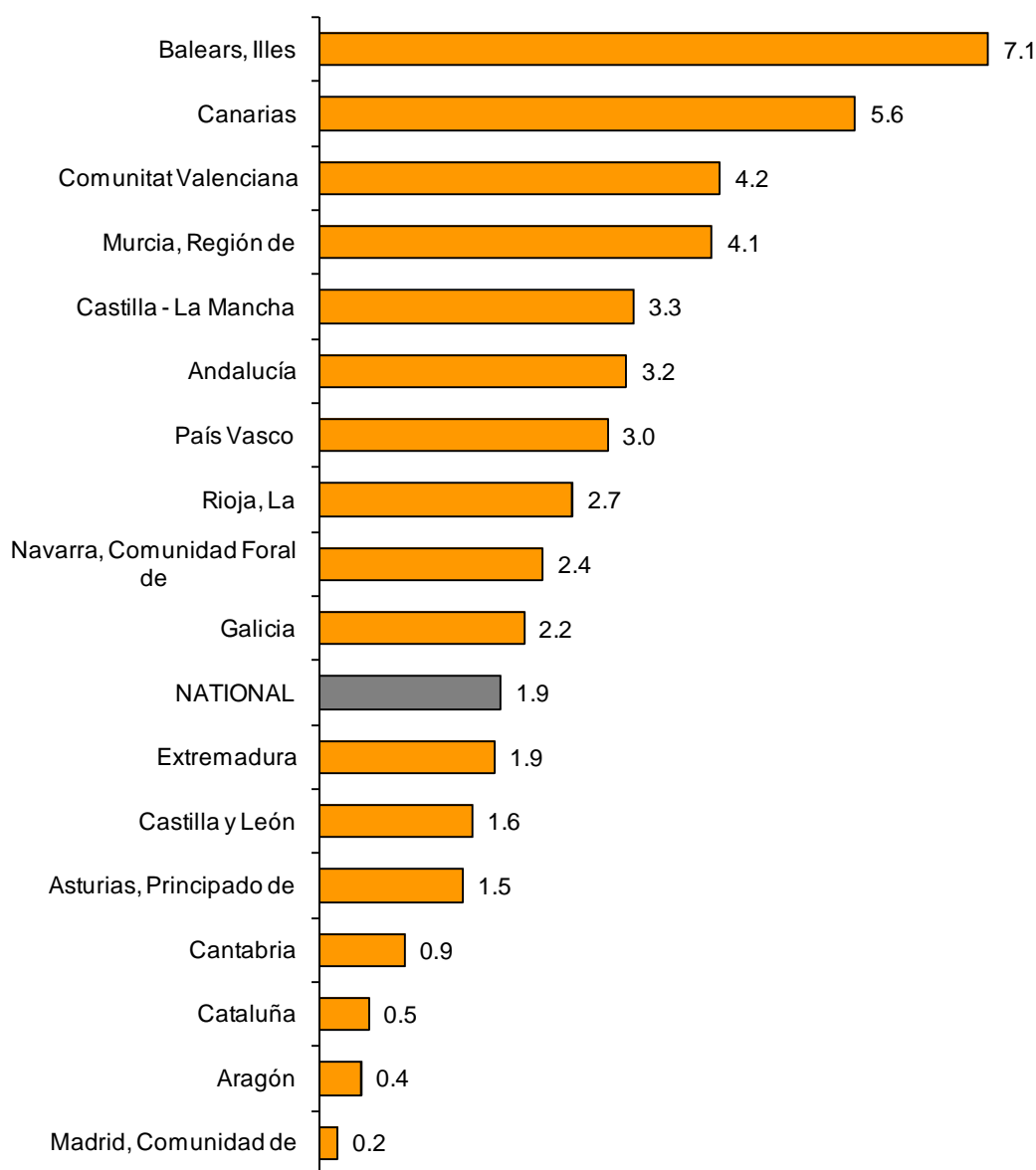
	Original index	Seasonally adjusted index
	Annual rate (%)	Annual rate (%)
GENERAL INDEX	1.9	3.0
1. TRADE	2.3	3.6
1.1. Sale and repair of vehicles and motorcycles	5.5	11.6
1.2. Wholesale trade	2.9	6.2
1.3. Retail trade	0.5	0.6
2. OTHER SERVICES	1.2	2.2
2.1. Transport and storage	2.3	3.7
2.2. Accommodation	8.6	4.9
2.3. Information and communications	-3.4	-1.8
2.4. Professional, scientific and technical activities	-2.2	1.5
2.5. Administrative and support service activities	3.1	1.1

Annual turnover variation rates. Original series. Results by Autonomous Community

In April, all Autonomous Communities registered an increase in their turnover in the Market Service Sector.

The greatest increases were recorded in Illes Balears (7.1%), Canarias (5.6%) and Comunitat Valenciana (4.2%).

General Indices: National and by Autonomous Community Turnover Annual Rate



Evolution of employed personnel

Employment in the Market Services Sector experienced an increase of 0.9% in April, as compared with the same month of the previous year. This annual rate was 1.1 points over that registered in March.

Employment in Trade remained the same (0.0%). In turn, employment in Other Services registered an increase of 1.4%, as compared with April 2013.

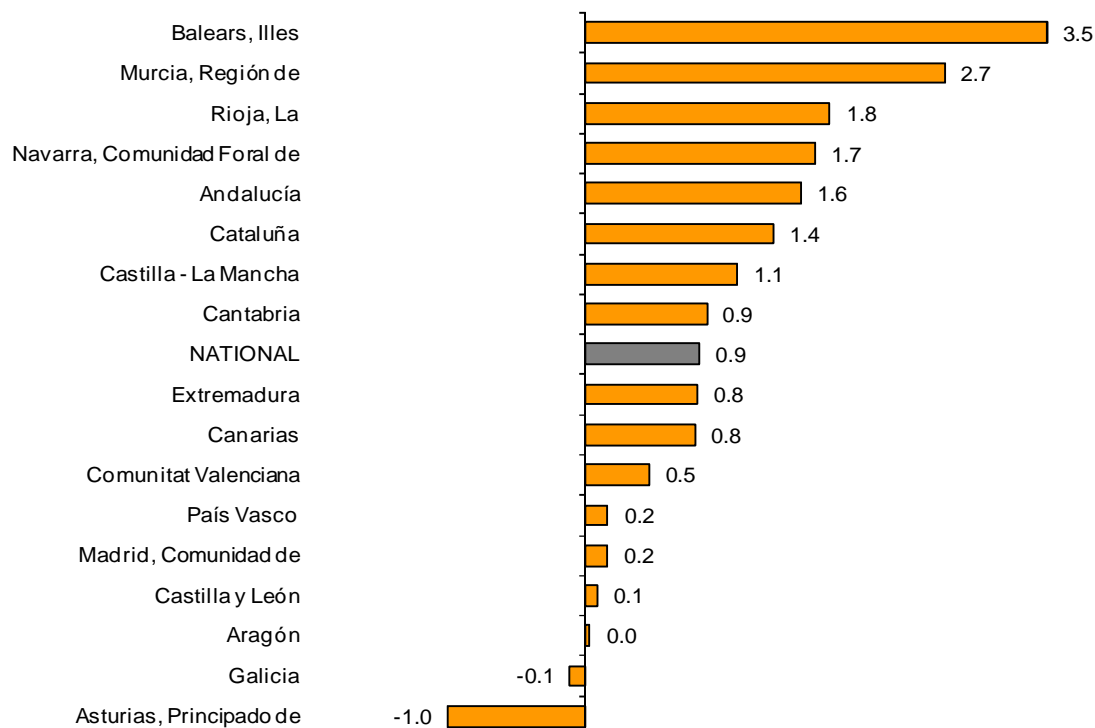
National Indices of employed personnel by sector

	Index	Rate (%)	
		Monthly	Annual
GENERAL INDEX	95.4	1.3	0.9
1. TRADE	94.5	0.6	0.0
1.1. Sale and repair of vehicles and motorcycles	86.7	-0.1	-2.0
1.2. Wholesale trade	96.5	0.9	1.0
1.3. Retail trade	94.7	0.4	-0.2
2. OTHER SERVICES	95.9	1.8	1.4
2.1. Transport and storage	93.7	0.5	-0.1
2.2. Accommodation	98.6	5.1	2.7
2.3. Information and communications	93.4	0.2	-0.7
2.4. Professional, scientific and technical activities	94.1	0.1	-0.3
2.5. Administrative and support service activities	96.7	1.3	3.6

Results by Autonomous Community. Annual variation rates of occupation

All Autonomous Communities registered positive annual rates in employment, except for Principado de Asturias (-1.0%) and Galicia (-0.1%).

General Indices: National and by Autonomous Community Annual rate of employed personnel



Services Sector Activity Indicators. Base 2010

April 2014

Provisional data

1. Turnover indices: General and by sector. Adjusted for seasonal and calendar effects

	Index	Rate (%)		
		Monthly	Annual	Year-to-date average
GENERAL INDEX	92.4	1.0	3.0	1.9
1. TRADE	91.8	1.1	3.6	2.2
1.1. Sale and repair of vehicles and motorcycles	79.4	3.9	11.6	10.0
1.2. Wholesale trade	95.6	3.3	6.2	2.7
1.3. Retail trade	91.3	0.6	0.6	0.2
2. OTHER SERVICES	93.9	1.4	2.2	1.4
2.1. Transport and storage	102.0	0.5	3.7	3.3
2.2. Accommodation	96.3	1.8	4.9	3.0
2.3. Information and communications	88.2	-0.3	-1.8	-1.1
2.4. Professional, scientific and technical activities	89.2	3.1	1.5	-0.4
2.5. Administrative and support service activities	91.9	0.9	1.1	1.4

2. Turnover indices: General and by sector. Adjusted for calendar effects

	Index	Rate (%)	
		Annual	Year-to-date average
GENERAL INDEX	91.5	4.5	2.1
1. TRADE	91.3	5.5	2.5
1.1. Sale and repair of vehicles and motorcycles	78.4	12.5	9.7
1.2. Wholesale trade	95.0	6.7	2.8
1.3. Retail trade	88.4	1.2	0.3
2. OTHER SERVICES	91.9	2.5	1.4
2.1. Transport and storage	102.5	4.7	3.7
2.2. Accommodation	92.5	5.7	2.9
2.3. Information and communications	86.3	-1.7	-1.0
2.4. Professional, scientific and technical activities	89.1	2.1	-0.7
2.5. Administrative and support service activities	86.8	1.1	1.2

3. National turnover indices: General and by branch of activity.

Original series

	Index	Rate (%)	
		Annual	Year-to-date average
GENERAL INDEX	91.5	1.9	2.1
1. TRADE	91.2	2.3	2.5
1.1. SALE AND REPAIR OF VEHICLES	77.9	5.5	9.7
- Sale of motor vehicles	77.4	7.9	12.3
- Maintenance and repair of motor vehicles	80.2	-5.7	-2.4
1.2. WHOLESALE TRADE AND COMMISSION TRADE	94.9	2.9	2.7
- Wholesale on a fee or contract basis	103.9	2.6	2.7
- Wholesale of agricultural raw materials and live animals	111.5	2.6	2.5
- Wholesale of food, beverages and tobacco	96.4	4.7	1.5
- Wholesale of household goods	99.3	1.8	4.5
- Wholesale of information and communication equipment	74.7	3.5	2.0
- Wholesale of other machinery, equipment and supplies	84.3	2.1	1.3
- Other specialised wholesale trade	95.8	2.3	2.9
- Non-specialised wholesale trade	99.1	1.6	2.9
1.3. RETAIL TRADE	88.9	0.5	0.2
2. OTHER SERVICES	91.9	1.2	1.4
2.1. TRANSPORTATION AND STORAGE SERVICES	102.5	2.3	3.6
Land transport	98.4	1.1	3.0
- Rail transport	109.4	15.1	7.7
- Taxi operation	96.2	2.7	2.6
- Other passenger land transport	97.6	-2.6	-0.1
- Freight transport by road and removal services	97.8	0.4	3.2
Water transport	73.5	2.6	-1.3
Air transport	103.2	11.6	6.3
Warehousing and support activities for transportation	111.3	2.6	4.6
Post and courier activities	88.1	-5.9	-1.8
2.2. ACCOMMODATION AND FOOD SERVICES ACTIVITIES	93.1	8.6	2.9
Accommodation	97.6	14.9	6.0
Food and beverage service activities	92.0	6.1	1.8
2.3. INFORMATION AND COMMUNICATION	86.3	-3.4	-0.9
Publishing activities	79.4	-3.2	-1.6
Motion picture, television programme production and music publishing activities	100.0	10.4	5.4
Programming and broadcasting activities	94.8	2.3	3.5
Telecommunications	73.4	-8.2	-5.6
Computer programming, consultancy and related activities	106.6	-0.8	3.4
Information service activities	95.1	-3.7	1.3
2.4. PROFESSIONAL, SCIENTIFIC AND TECHNICAL ACTIVITIES	88.2	-2.2	-0.7
Legal, accounting and management consulting activities	97.5	-2.6	0.3
Architectural and engineering activities; technical testing and analysis	81.9	-5.2	-0.5
Advertising and market research	82.4	1.3	-2.2
Other professional scientific and technical activities	90.5	3.3	-1.7
2.5. ADMINISTRATIVE AND SUPPORT SERVICE ACTIVITIES	87.8	3.1	1.2
Employment activities	98.5	12.1	13.3
Travel agencies and tour operator services	80.6	7.2	4.1
Security and investigation activities	96.8	1.0	0.5
Cleaning activities	94.3	-1.1	-0.7
Office administrative and other business support activities	80.5	-1.3	-4.6

4. Employed personnel indices: General and by branch of activity

	Index	Rate (%)		
		Monthly	Annual	Year-to-date average
GENERAL INDEX	95.4	1.3	0.9	0.0
1. TRADE	94.5	0.6	0.0	-0.8
1.1. SALE AND REPAIR OF VEHICLES	86.7	-0.1	-2.0	-2.3
- Sale of motor vehicles	83.6	-0.2	-2.2	-2.9
- Maintenance and repair of motor vehicles	90.3	0.1	-1.8	-1.8
1.2. WHOLESALE TRADE AND COMMISSION TRADE	96.5	0.9	1.0	-0.6
- Wholesale on a fee or contract basis	98.2	3.3	1.4	0.1
- Wholesale of agricultural raw materials and live animals	101.1	0.6	3.8	1.7
- Wholesale of food, beverages and tobacco	103.7	1.2	2.9	0.4
- Wholesale of household goods	92.9	0.3	-1.0	-2.2
- Wholesale of information and communication equipment	96.4	0.1	0.5	0.0
- Wholesale of other machinery, equipment and supplies	92.6	0.7	1.1	0.2
- Other specialised wholesale trade	90.4	0.8	-0.3	-1.5
- Non-specialised wholesale trade	90.0	-0.7	-3.2	-3.6
1.3. RETAIL TRADE	94.7	0.4	-0.2	-0.7
2. OTHER SERVICES	95.9	1.8	1.4	0.5
2.1. TRANSPORTATION AND STORAGE SERVICES	93.7	0.5	-0.1	-0.3
Land transport	94.8	0.5	0.5	0.5
- Rail transport	98.0	-0.9	-0.9	-0.7
- Taxi operation	95.3	1.1	-2.5	-1.7
- Other passenger land transport	96.3	1.3	-1.8	-2.3
- Freight transport by road and removal services	94.0	0.3	1.7	1.7
Water transport	84.7	2.4	-2.1	-1.0
Air transport	89.3	2.3	-3.9	-6.0
Warehousing and support activities for transportation	95.8	0.8	0.0	-0.8
Post and courier activities	84.9	-1.4	-2.6	-2.0
2.2. ACCOMMODATION AND FOOD SERVICES ACTIVITIES	98.6	5.1	2.7	1.0
Accommodation	95.4	12.9	4.6	2.3
Food and beverage service activities	99.7	3.2	2.3	0.7
2.3. INFORMATION AND COMMUNICATION	93.4	0.2	-0.7	-1.3
Publishing activities	81.5	-1.0	-2.8	-3.4
Motion picture, television programme production and music publishing activities	74.7	0.6	-5.2	-7.2
Programming and broadcasting activities	85.3	-0.3	-3.1	-3.0
Telecommunications	87.2	-0.2	-1.7	-3.1
Computer programming, consultancy and related activities	102.7	0.5	0.9	0.6
Information service activities	95.9	1.0	-0.7	-1.9
2.4. PROFESSIONAL, SCIENTIFIC AND TECHNICAL ACTIVITIES	94.1	0.1	-0.3	-0.5
Legal, accounting and management consulting activities	98.2	0.2	0.1	0.1
Architectural and engineering activities; technical testing and analysis	88.7	-0.4	-1.3	-1.4
Advertising and market research	88.6	0.1	-1.7	-3.1
Other professional scientific and technical activities	96.8	0.9	1.8	2.0
2.5. ADMINISTRATIVE AND SUPPORT SERVICE ACTIVITIES	96.7	1.3	3.6	2.3
Employment activities	110.8	5.0	23.5	16.8
Travel agencies and tour operator services	88.9	0.9	0.8	0.9
Security and investigation activities	92.3	0.3	0.3	-0.5
Cleaning activities	93.4	0.2	-0.9	-1.1
Office administrative and other business support activities	97.5	1.0	1.6	1.1

5. Turnover indices: National and by Autonomous Community

	Index	Rate (%)	
		Annual	Year-to-date average
NATIONAL	91.5	1.9	2.1
Andalucía	92.0	3.2	2.5
Aragón	92.5	0.4	1.8
Asturias, Principado de	87.8	1.5	1.9
Balears, Illes	94.9	7.1	4.9
Canarias	95.6	5.6	4.5
Cantabria	83.4	0.9	-1.0
Castilla y León	95.2	1.6	0.2
Castilla-La Mancha	91.1	3.3	0.7
Cataluña	93.1	0.5	2.4
Comunitat Valenciana	95.7	4.2	2.1
Extremadura	82.7	1.9	1.1
Galicia	95.1	2.2	2.1
Madrid, Comunidad de	87.1	0.2	1.1
Murcia, Región de	100.0	4.1	3.7
Navarra, Comunidad Foral de	88.1	2.4	3.3
País Vasco	91.0	3.0	4.1
Rioja, La	97.2	2.7	3.3

6. Employed personnel indices: National and by Autonomous Community

	Index	Rate (%)		
		Monthly	Annual	Year-to-date average
NATIONAL	95.4	1.3	0.9	0.0
Andalucía	96.1	2.0	1.6	0.1
Aragón	92.3	1.0	0.0	-1.3
Asturias, Principado de	91.0	0.8	-1.0	-1.7
Balears, Illes	98.6	11.5	3.5	1.1
Canarias	97.0	0.0	0.8	0.8
Cantabria	94.9	1.1	0.9	0.0
Castilla y León	93.5	1.0	0.1	-1.2
Castilla-La Mancha	94.4	1.2	1.1	0.4
Cataluña	96.8	1.4	1.4	0.6
Comunitat Valenciana	95.4	0.8	0.5	-0.2
Extremadura	95.0	0.9	0.8	0.2
Galicia	93.4	0.8	-0.1	-0.8
Madrid, Comunidad de	93.9	0.6	0.2	-0.5
Murcia, Región de	99.1	1.6	2.7	1.2
Navarra, Comunidad Foral de	95.4	1.5	1.7	0.6
País Vasco	97.0	0.6	0.2	-0.2
Rioja, La	97.0	0.3	1.8	0.6