

20 October 2015

Services Sector Activity Indicators (SSAI). Base 2010
August 2015. *Provisional data*

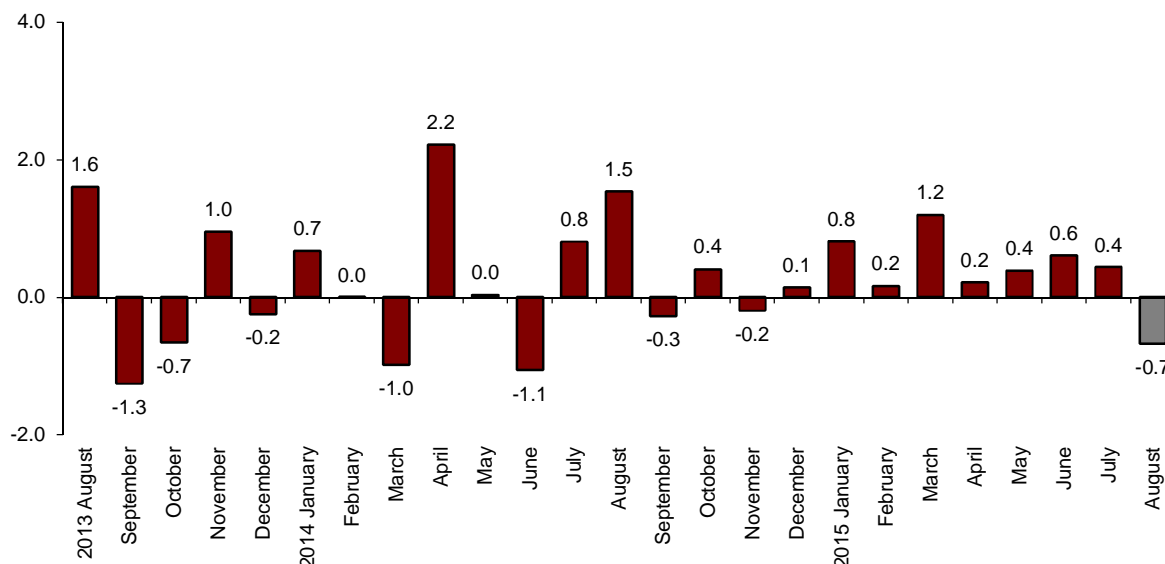
The monthly variation of turnover¹ for the market Services Sector is –0.7% after adjusting for seasonal and calendar effects

The annual rate of turnover stands at 3.3% in the seasonally and calendar adjusted series and at 4.6% in the original series

Monthly evolution of the turnover for the Market Services Sector

The monthly variation of the general index of the turnover for the Market Services Sector between August and July was –0.7%, after adjusting for seasonally and calendar effects. This rate was 1.1 point lower than that registered in July.

**General index of the turnover for the Market Services Sector
Adjusted for seasonal and calendar effects. Monthly rate**

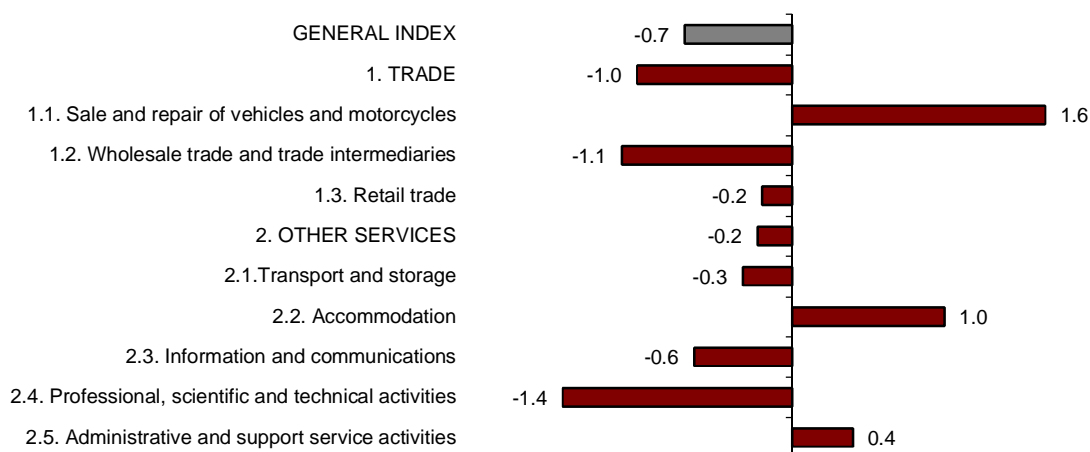


¹ As explained in the methodology for this value index, the information is presented in current terms (nominal terms), that is, without adjusting the effects in the price variation thereof.

Trade registered a monthly rate of -1.0% and the monthly rate of *Other services* was -0.2% , after adjusting for seasonal and calendar effects.

All the sectors registered negative monthly rates, except for *Sale and repair of vehicles and motorcycles* (1.6%), *Hotel industry* (1.0%) and *Administrative and support service activities* (0.4%).

**General and by sectors turnover Index
Adjusted for seasonal and calendar effects. Monthly rate**



A more detailed analysis showed the activities that registered the highest monthly rates and those that registered the greatest decreases in August.

**Activities with the greatest monthly rates of the Services Sector turnover index
adjusted for seasonal and calendar effects**

Activity (CNAE-2009 groups)	Monthly rate(%)
Publishing activities	3.1
Other professional scientific and technical activities	1.7
Sale and repair of vehicles	1.6

**Activities with the lowest monthly rates of the Services Sector turnover index
adjusted for seasonal and calendar effects**

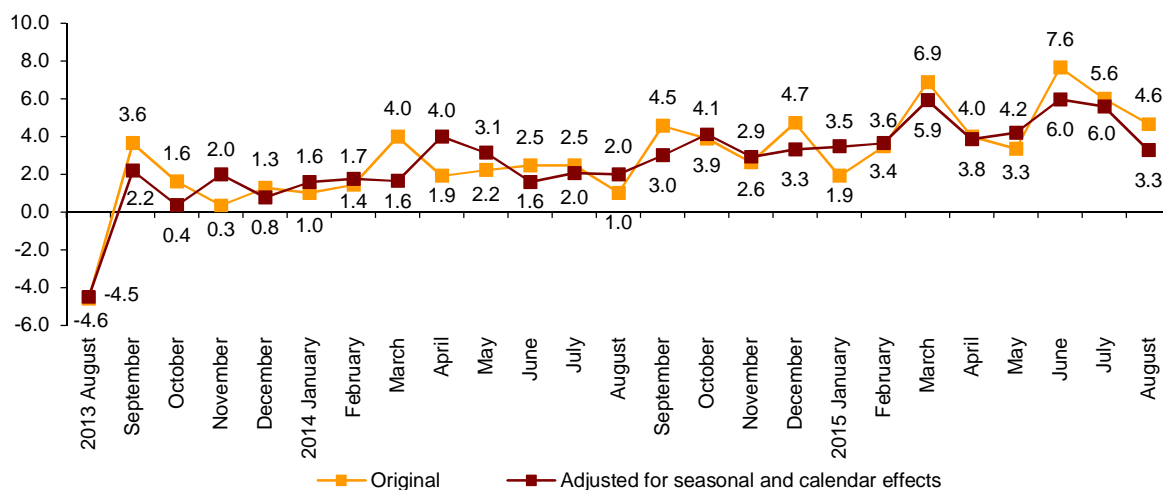
Activity (CNAE-2009 groups)	Monthly rate(%)
Programming and broadcasting activities	-5.7
Legal, accounting and management consulting activities	-1.9
Architectural and engineering activities; technical testing and analysis	-1.9

Annual turnover evolution rates for the Market Services sector

In August, the general Index of the turnover for the Market Services Sector, after adjusting for seasonal and calendar effects, registered a variation of 3.3%, as compared with the same month of 2014. This rate was 2.3 points lower than that registered in July.

The original series registered an annual variation of 4.6%, that is, 1.4 points lower than that recorded in July.

General index of the turnover for the Market Services Sector Annual Rate



After adjusting for seasonal and calendar effects, *Trade* increased by 2.7% as compared to August 2014 and *Other services* did so by 4.3%.

All the sectors registered positive annual rates, *Sale and repair of vehicles and motorcycles* (19.5%) was the one growing the most.

Annual rates of the Turnover index for the Market Services Sector: General and by sector

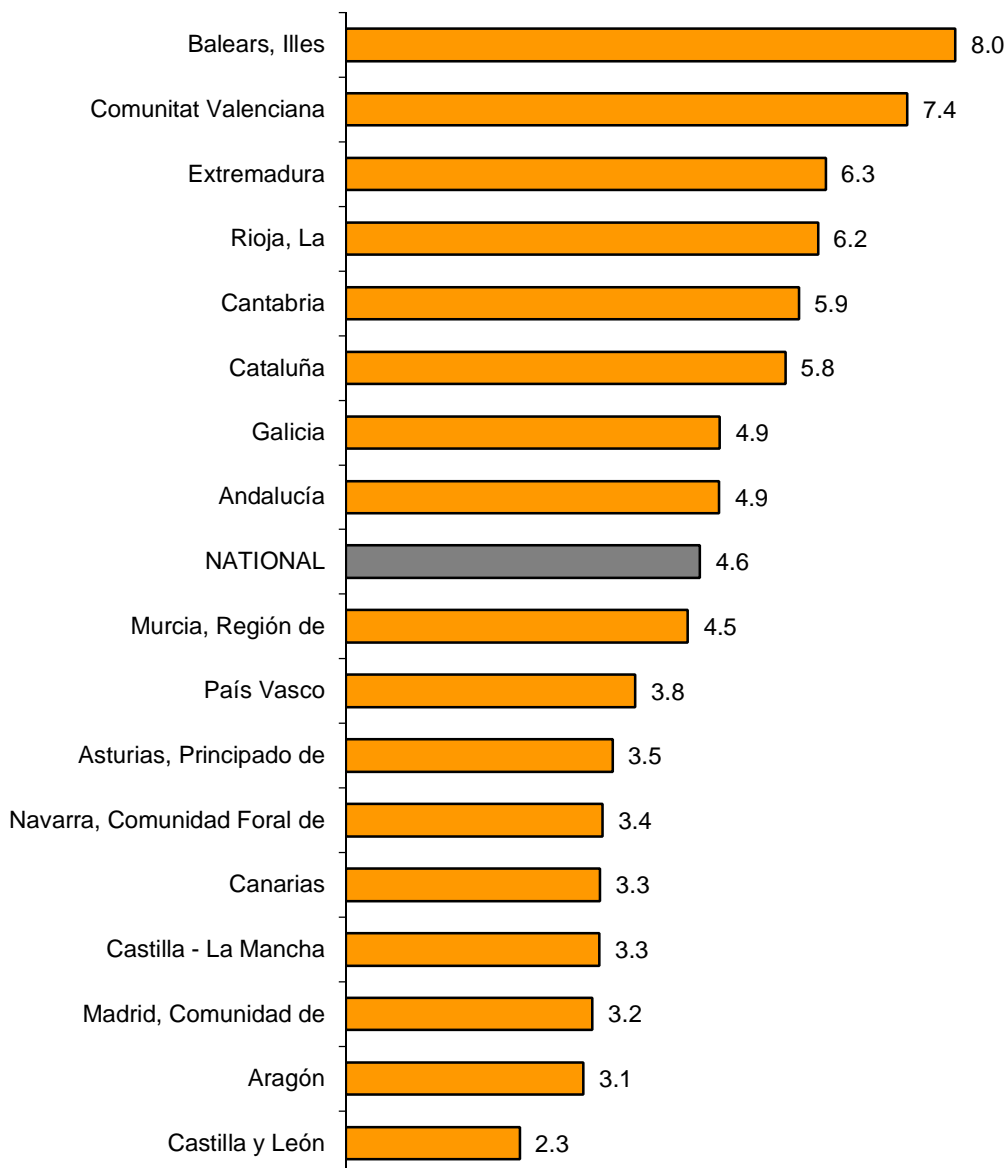
	Original index	Seasonally adjusted index
	Annual rate (%)	Annual rate (%)
GENERAL INDEX	4.6	3.3
1. TRADE	4.4	2.7
1.1. Sale and repair of vehicles and motorcycles	19.3	19.5
1.2. Wholesale trade	4.1	2.1
1.3. Retail trade	1.5	1.8
2. OTHER SERVICES	5.1	4.3
2.1. Transport and storage	3.5	3.2
2.2. Accommodation	5.4	5.6
2.3. Information and communications	5.3	4.1
2.4. Professional, scientific and technical activities	3.9	3.4
2.5. Administrative and support service activities	8.8	7.9

Results by Autonomous Community. Annual turnover variation rates. Original series

In August, all the Autonomous Communities registered increases in their turnover in the Market Service Sector as compared to the same month of the previous year.

Illes Balears (8.0%) and Comunitat Valenciana (7.4%) registered the greatest annual increases. In turn, Castilla y León (2.3%), and Aragón (3.1%) registered the lowest increases.

**General Indices: National and by Autonomous Community
Turnover Annual Rate**



Evolution of employment

Employment in the Market Services Sector increased by 2.0% in August, as compared with the same month of the previous year. This rate is similar compared to the registered one in July.

Employment increased by 1.7% in *Trade* and 2.2% in *Other services* in annual rate.

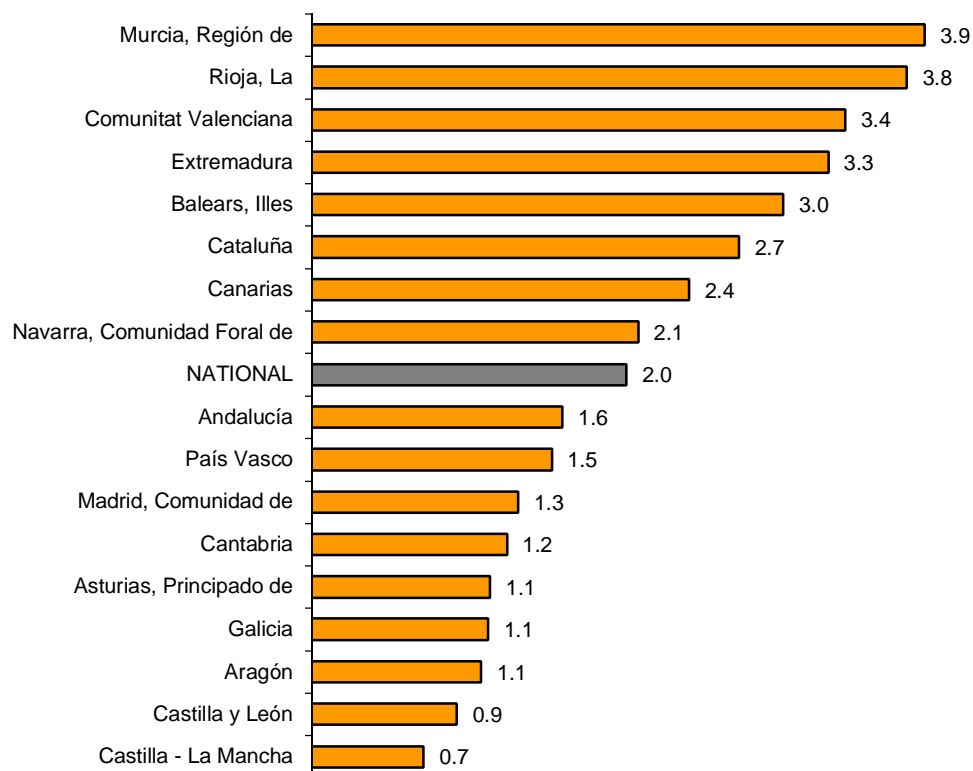
National Indices of employed personnel by sector

	Index	Rate (%)	
		Monthly	Annual
GENERAL INDEX	99.2	-0.4	2.0
1. TRADE	97.1	-0.1	1.7
1.1. Sale and repair of vehicles and motorcycles	89.9	0.0	1.7
1.2. Wholesale trade	97.3	-0.6	2.6
1.3. Retail trade	98.3	0.2	1.1
2. OTHER SERVICES	100.5	-0.6	2.2
2.1. Transport and storage	97.4	-0.2	1.8
2.2. Accommodation	105.9	0.3	1.8
2.3. Information and communications	95.9	-0.3	2.7
2.4. Professional, scientific and technical activities	95.6	-1.1	1.0
2.5. Administrative and support service activities	102.7	-1.9	4.0

Results by Autonomous Community. Annual variation rates of occupation

All Autonomous Communities registered positive annual rates in employment. Región de Murcia (3.9%) recorded the greatest increase.

General Indices: National and by Autonomous Community Annual rate of employed personnel



Services Sector Activity Indicators. Base 2010 August 2015

Provisional data

1. Turnover indices: General and by sector. Adjusted for seasonal and calendar effects

	Index	Rate (%)		
		Monthly	Annual	Year-to-date average
GENERAL INDEX	97.6	-0.7	3.3	4.5
1. TRADE	97.2	-1.0	2.7	4.7
1.1. Sale and repair of vehicles and motorcycles	98.1	1.6	19.5	19.8
1.2. Wholesale trade	99.5	-1.1	2.1	4.2
1.3. Retail trade	94.2	-0.2	1.8	1.6
2. OTHER SERVICES	98.7	-0.2	4.3	4.2
2.1. Transport and storage	107.1	-0.3	3.2	4.3
2.2. Accommodation	104.3	1.0	5.6	4.7
2.3. Information and communications	91.2	-0.6	4.1	2.2
2.4. Professional, scientific and technical activities	91.3	-1.4	3.4	4.0
2.5. Administrative and support service activities	99.9	0.4	7.9	6.9

2. Turnover indices: General and by sector. Adjusted for calendar effects

	Index	Rate (%)	
		Annual	Year-to-date average
GENERAL INDEX	91.5	3.2	4.6
1. TRADE	88.3	2.6	4.8
1.1. Sale and repair of vehicles and motorcycles	76.1	19.3	20.1
1.2. Wholesale trade	88.7	2.0	4.4
1.3. Retail trade	92.0	1.5	1.5
2. OTHER SERVICES	97.2	4.3	4.2
2.1. Transport and storage	102.2	2.1	4.3
2.2. Accommodation	137.1	5.9	4.7
2.3. Information and communications	79.7	4.2	2.2
2.4. Professional, scientific and technical activities	67.2	3.0	4.1
2.5. Administrative and support service activities	120.3	8.1	7.1

3. National turnover indices: General and by branch of activity.

Original series

	Index	Rate (%)	
		Annual	Year-to-date average
GENERAL INDEX	91.0	4.6	4.8
1. TRADE	87.7	4.4	5.0
1.1. SALE AND REPAIR OF VEHICLES	74.4	19.3	20.0
- Sale of motor vehicles	74.4	22.7	22.7
- Maintenance and repair of motor vehicles	74.2	3.0	5.0
1.2. WHOLESALE TRADE AND COMMISSION TRADE	87.9	4.1	4.7
- Wholesale on a fee or contract basis	95.8	7.3	6.5
- Wholesale of agricultural raw materials and live animals	101.7	5.1	2.8
- Wholesale of food, beverages and tobacco	97.9	9.3	7.5
- Wholesale of household goods	89.5	3.5	3.9
- Wholesale of information and communication equipment	65.2	15.1	10.0
- Wholesale of other machinery, equipment and supplies	74.4	16.1	10.5
- Other specialised wholesale trade	84.7	-4.9	0.7
- Non-specialised wholesale trade	78.0	9.1	6.1
1.3. RETAIL TRADE	91.2	1.5	1.5
2. OTHER SERVICES	96.9	5.1	4.4
2.1. TRANSPORTATION AND STORAGE SERVICES	101.6	3.5	4.5
Land transport	86.3	3.1	3.7
- Rail transport	96.3	1.8	4.6
- Taxi operation	95.2	3.7	3.2
- Other passenger land transport	81.1	0.1	0.9
- Freight transport by road and removal services	85.9	3.8	4.2
Water transport	106.6	5.7	4.0
Air transport	147.4	6.2	5.4
Warehousing and support activities for transportation	113.7	3.0	5.1
Post and courier activities	72.7	3.6	5.8
2.2. ACCOMMODATION AND FOOD SERVICES ACTIVITIES	137.5	5.4	4.6
Accommodation	214.1	6.4	5.9
Food and beverage service activities	107.8	4.6	4.0
2.3. INFORMATION AND COMMUNICATION	79.4	5.3	2.4
Publishing activities	74.2	10.4	3.3
Motion picture, television programme production and music publishing activities	64.4	10.4	2.4
Programming and broadcasting activities	71.2	2.6	9.4
Telecommunications	74.2	4.3	-1.0
Computer programming, consultancy and related activities	95.9	4.3	4.8
Information service activities	89.2	12.7	3.5
2.4. PROFESSIONAL, SCIENTIFIC AND TECHNICAL ACTIVITIES	66.9	3.9	4.3
Legal, accounting and management consulting activities	71.3	4.5	5.6
Architectural and engineering activities; technical testing and analysis	70.3	4.0	2.7
Advertising and market research	55.6	2.5	4.5
Other professional scientific and technical activities	66.8	3.9	3.1
2.5. ADMINISTRATIVE AND SUPPORT SERVICE ACTIVITIES	120.0	8.8	7.2
Employment activities	126.4	18.1	19.5
Travel agencies and tour operator services	159.2	10.1	8.3
Security and investigation activities	100.2	4.8	2.6
Cleaning activities	92.3	1.2	2.0
Office administrative and other business support activities	75.2	11.1	8.1

4. Employed personnel indices: General and by branch of activity

	Index	Rate (%)		
		Monthly	Annual	Year-to-date average
GENERAL INDEX	99.2	-0.4	2.0	2.0
1. TRADE	97.1	-0.1	1.7	1.4
1.1. SALE AND REPAIR OF VEHICLES	89.9	0.0	1.7	1.7
- Sale of motor vehicles	87.7	-0.3	2.7	2.5
- Maintenance and repair of motor vehicles	92.4	0.2	0.7	1.0
1.2. WHOLESALE TRADE AND COMMISSION TRADE	97.3	-0.6	2.6	2.0
- Wholesale on a fee or contract basis	100.7	2.5	2.5	2.1
- Wholesale of agricultural raw materials and live animals	103.7	-1.1	1.2	1.8
- Wholesale of food, beverages and tobacco	99.1	-2.5	3.5	2.4
- Wholesale of household goods	95.5	0.2	1.7	1.1
- Wholesale of information and communication equipment	99.2	-0.2	3.5	2.5
- Wholesale of other machinery, equipment and supplies	96.4	-0.1	2.2	2.0
- Other specialised wholesale trade	93.9	0.2	2.5	2.4
- Non-specialised wholesale trade	94.9	0.1	1.9	2.6
1.3. RETAIL TRADE	98.3	0.2	1.1	0.9
2. OTHER SERVICES	100.5	-0.6	2.2	2.4
2.1. TRANSPORTATION AND STORAGE SERVICES	97.4	-0.2	1.8	1.8
Land transport	98.0	-0.7	1.8	2.4
- Rail transport	95.6	0.0	-1.6	-2.5
- Taxi operation	99.0	0.9	1.0	0.4
- Other passenger land transport	94.5	-0.8	1.0	1.5
- Freight transport by road and removal services	98.8	-0.9	2.4	3.2
Water transport	103.2	-0.6	1.2	1.1
Air transport	92.2	-0.7	-1.6	-1.6
Warehousing and support activities for transportation	100.8	0.2	2.3	2.1
Post and courier activities	88.2	2.0	1.4	-0.9
2.2. ACCOMMODATION AND FOOD SERVICES ACTIVITIES	105.9	0.3	1.8	1.3
Accommodation	120.3	0.4	1.2	1.2
Food and beverage service activities	102.2	0.3	2.0	1.3
2.3. INFORMATION AND COMMUNICATION	95.9	-0.3	2.7	2.2
Publishing activities	83.1	1.2	0.9	0.5
Motion picture, television programme production and music publishing activities	73.8	-3.4	3.9	2.3
Programming and broadcasting activities	89.5	0.0	3.0	3.0
Telecommunications	86.8	0.0	0.3	-0.5
Computer programming, consultancy and related activities	107.0	-0.4	3.8	3.3
Information service activities	93.5	-1.3	-1.2	-1.1
2.4. PROFESSIONAL, SCIENTIFIC AND TECHNICAL ACTIVITIES	95.6	-1.1	1.0	1.6
Legal, accounting and management consulting activities	99.0	-0.6	0.6	1.1
Architectural and engineering activities; technical testing and analysis	91.8	-0.9	1.1	1.8
Advertising and market research	89.4	-4.7	3.5	4.0
Other professional scientific and technical activities	97.4	-1.1	1.0	1.3
2.5. ADMINISTRATIVE AND SUPPORT SERVICE ACTIVITIES	102.7	-1.9	4.0	5.0
Employment activities	127.1	-9.4	12.3	16.5
Travel agencies and tour operator services	96.7	-3.9	3.7	3.6
Security and investigation activities	96.7	1.8	2.7	2.3
Cleaning activities	97.5	0.9	1.8	1.2
Office administrative and other business support activities	99.2	-1.5	1.9	5.1

5. Turnover indices: National and by Autonomous Community

	Index	Rate (%)	
		Annual	Year-to-date average
NATIONAL	91.0	4.6	4.8
Andalucía	93.0	4.9	4.2
Aragón	90.7	3.1	2.1
Asturias, Principado de	92.2	3.5	3.0
Balears, Illes	164.7	8.0	7.1
Canarias	111.6	3.3	2.6
Cantabria	103.0	5.9	4.2
Castilla y León	97.0	2.3	2.6
Castilla-La Mancha	87.3	3.3	3.9
Cataluña	88.2	5.8	6.4
Comunitat Valenciana	93.6	7.4	6.4
Extremadura	95.0	6.3	5.3
Galicia	105.2	4.9	4.2
Madrid, Comunidad de	80.9	3.2	4.5
Murcia, Región de	92.4	4.5	4.4
Navarra, Comunidad Foral de	86.4	3.4	3.5
País Vasco	78.1	3.8	4.0
Rioja, La	98.1	6.2	5.8

6. Employed personnel indices: National and by Autonomous Community

	Index	Rate (%)		
		Monthly	Annual	Year-to-date average
NATIONAL	99.2	-0.4	2.0	2.0
Andalucía	97.7	-0.6	1.6	1.6
Aragón	96.2	-0.1	1.1	1.6
Asturias, Principado de	94.2	0.2	1.1	0.9
Balears, Illes	124.8	0.5	3.0	2.5
Canarias	99.8	0.1	2.4	1.6
Cantabria	101.9	0.4	1.2	1.4
Castilla y León	95.7	-0.3	0.9	0.8
Castilla-La Mancha	98.5	-0.4	0.7	1.8
Cataluña	103.0	-0.6	2.7	3.0
Comunitat Valenciana	96.7	-0.4	3.4	2.1
Extremadura	102.3	0.0	3.3	2.6
Galicia	96.4	-0.2	1.1	1.1
Madrid, Comunidad de	96.1	-0.3	1.3	1.5
Murcia, Región de	100.7	-2.2	3.9	3.4
Navarra, Comunidad Foral de	100.7	-1.0	2.1	3.0
País Vasco	100.2	-0.5	1.5	2.2
Rioja, La	102.0	-0.1	3.8	3.7

For further information see **INEbase** - www.ine.es/en/ All press releases at: www.ine.es/en/prensa/prensa_en.htm

Press Office: Telephone numbers: 91 583 93 63 / 94 08 – Fax: 91 583 90 87 - gprensa@ine.es

Information Area: Telephone number: 91 583 91 00 – Fax: 91 583 91 58 – www.ine.es/infoine