

17 February 2014

**Services Sector Activity Indicators (SSAI). Base 2010**  
December 2013. *Provisional data*

**The annual rate of turnover for the market Services Sector stands at 0.1% in the seasonally and calendar adjusted series and at 1.1% in the original series**

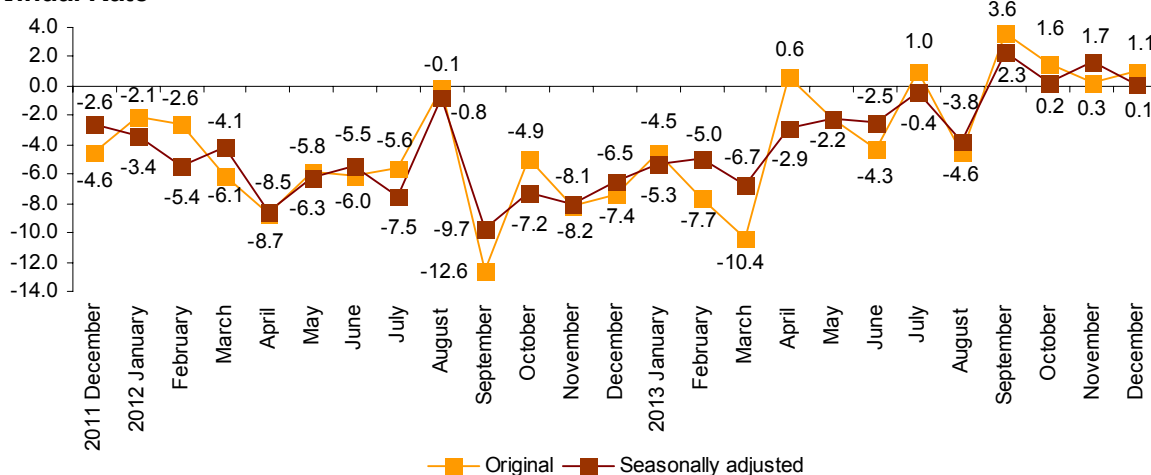
**The monthly variation is -0.7% after adjusting for seasonal and calendar effects**

The turnover for the market Services Sector registered a variation of 1.1% in December, as compared with the same month of the previous year. This rate was eight tenths over that registered in November.

After adjusting for seasonal and calendar effects, the annual rate was 0.1%, one point and six tenths lower that registered in November.

In 2013, the turnover for the market Services Sector registered a variation of -2.1% as compared with the previous year.

**General index of the turnover for the Market Services Sector**  
**Annual Rate**



\*Seasonally adjusted: adjusted for season and calendar effects.

## Annual evolution of turnover for the Services Sector

*Trade* increased its turnover by 0.7% at an annual rate and *Other Services* did so by 1.7%.

By sectors, *Sale and repair of vehicles and motorcycles* (9.2%) and *Administrative and support service activities* (3.5%) registered the greatest increases. In turn, *Information and communications* (-0.9%) and *Wholesale trade* (-0.2%) were the only sectors that registered a decrease.

In 2013, all sectors presented negative rates as compared with the previous year.

## Annual rates of the national Turnover index by sector

	Original index		Seasonally adjusted index
	Annual rate (%)	Average year 2013	Annual rate (%)
<b>GENERAL INDEX</b>	1.1	-2.1	0.1
1. Trade	0.7	-1.9	-0.5
1.1. Sale and repair of vehicles and motorcycles	9.2	-4.7	5.9
1.2. Wholesale trade	-0.2	-1.3	-1.7
1.3. Retail trade	0.4	-2.4	-0.5
2. Other services	1.7	-2.5	1.1
2.1. Transport and storage	2.0	-0.5	0.5
2.2. Accommodation	1.7	-0.1	2.3
2.3. Information and communications	-0.9	-5.2	-2.1
2.4. Professional, scientific and technical activities	3.2	-3.7	2.7
2.5. Administrative and support service activities	3.5	-3.3	2.7

A more detailed analysis showed the activities that registered the highest annual rates and those that registered the greatest decreases in December.

## Activities with the greatest annual rates of the Services Sector turnover

Activity (Elementary aggregate)	Original Index	Annual rate (%)
Employment activities	99.0	12.7
Sale of motor vehicles	75.4	11.2
Travel agencies and tour operator services	58.5	11.1
Motion picture, television programme production and music publishing activities	111.9	6.6

## Activities with the lowest annual rates of the Services Sector turnover

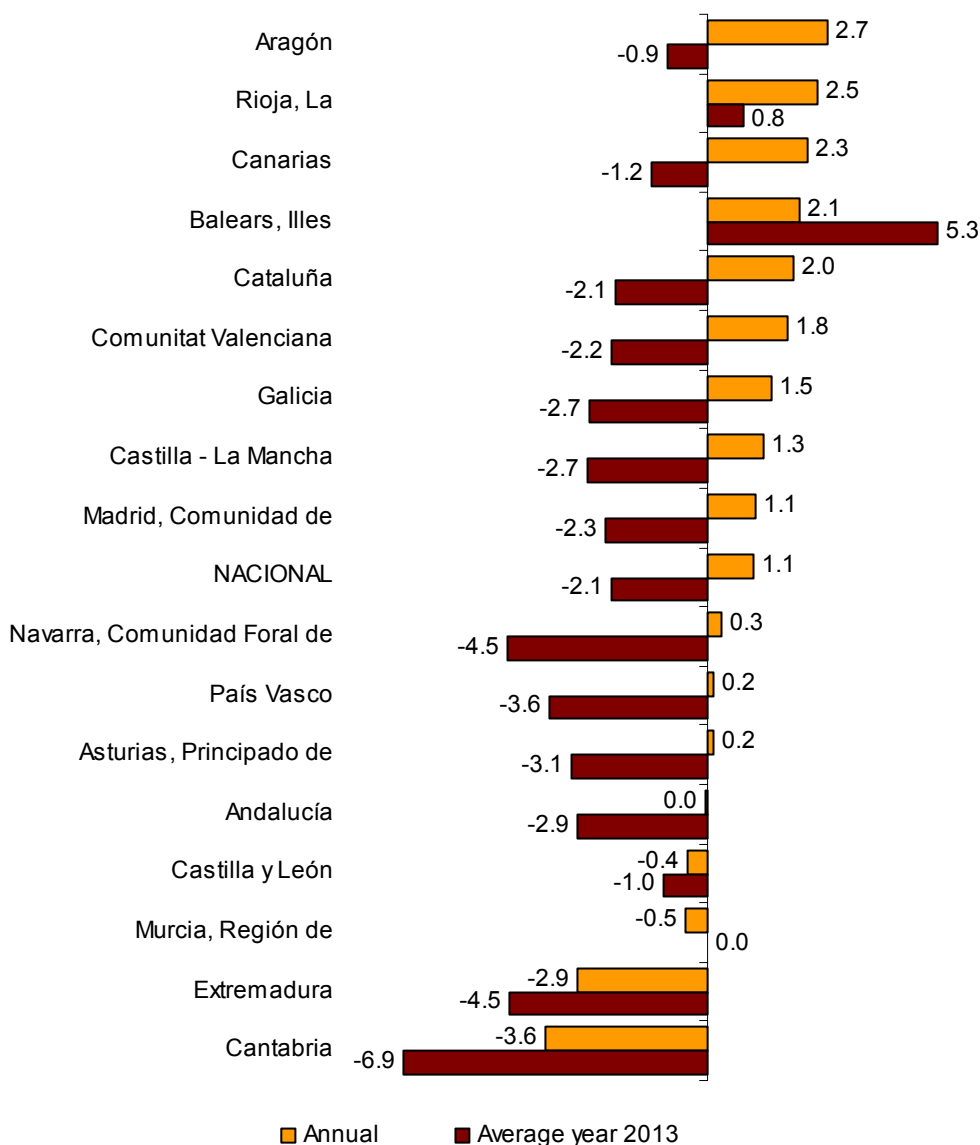
Activity (Elementary aggregate)	Original Index	Annual rate (%)
Water transport	73.7	-6.1
Other professional scientific and technical activities	92.5	-4.1
Telecommunications	87.3	-3.6
Other specialised wholesale trade	91.1	-3.5

**Results by Autonomous Community. Annual turnover variation rates**

In December, 12 Autonomous Communities registered positive annual rates of turnover in the Market Service Sector, being Aragón (2.7%) and La Rioja (2.5%) the communities that registered the greatest increases.

In 2013, all communities registered lower turnovers, except for Illes Balears (5.3%), La Rioja (0.8%) and Región de Murcia (0.0%).

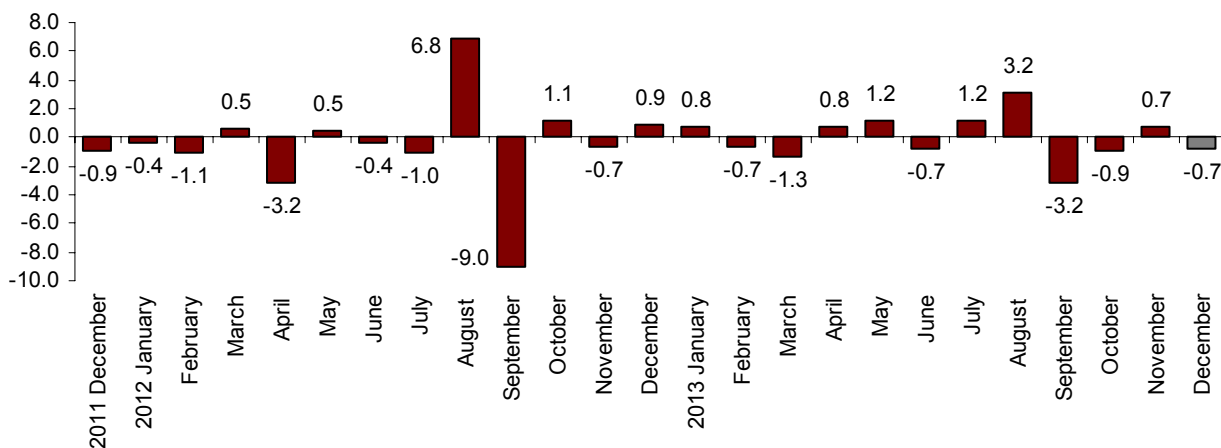
**General Index by Autonomous Community  
Turnover Annual Rate**



**Monthly evolution of the Services Sector Turnover adjusted for seasonal and calendar effects**

After eliminating the seasonal and calendar effect, the monthly variation of the General Index of Market Services Sector Turnover between December and November stood at  $-0.7\%$ . This rate was 1.4 points lower than that registered in November.

**General Index of the turnover for the Market Services Sector  
Adjusted for seasonal and calendar effects. Monthly Rate**

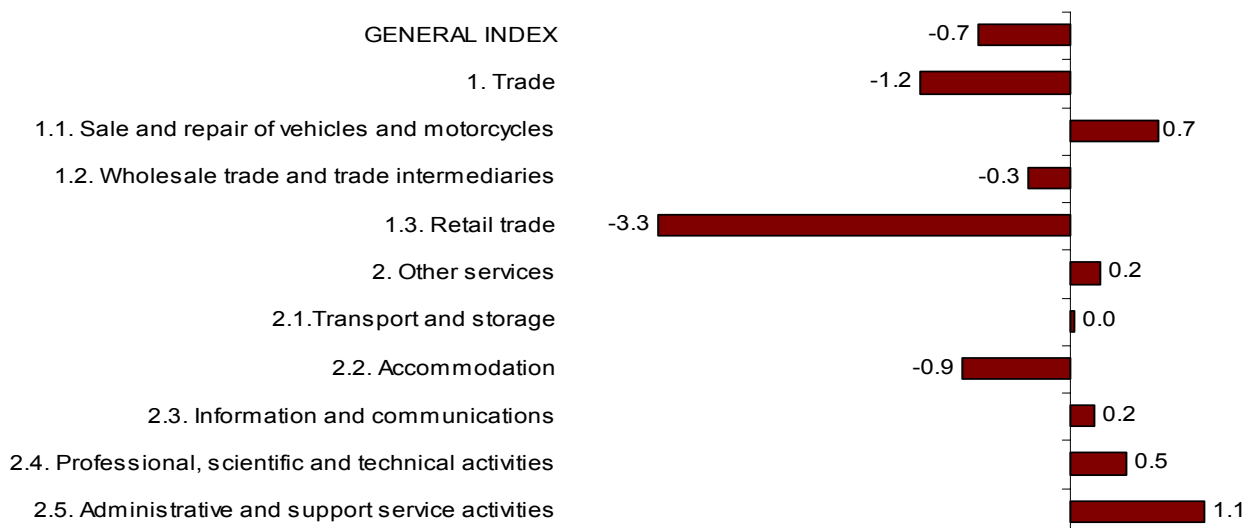


**Monthly evolution of the Turnover by sectors adjusted for seasonal and calendar effects**

After eliminating the seasonal and calendar effect, the monthly variations of *Trade* decreased by  $-1.2\%$  and *Other Services* increased by  $0.2\%$ .

All sectors registered an increase in their invoicing, except *Retail trade* ( $-3.3\%$ ), *Accommodation* ( $-0.9\%$ ) and *Wholesale trade* ( $-0.3\%$ ).

**General and by sectors turnover Index  
Adjusted for seasonal and calendar effects. Monthly rate**



## Evolution of employed personnel

Employment in the Market Services Sector experienced a decrease of 0.4% in December, as compared with the same month of previous year. This annual rate was the same as the one registered in November.

The annual variation of employed personnel in *Trade* was -1.5% and that in *Other Services* was 0.4%. By sector, all registered lower annual rates except for *Administrative and support service activities* (2.1%) and *Accommodation* (1.0%).

In 2013, the average rate of employment fell -1.4%. Employment in *Trade* and in *Other Services* registered a decrease of 1.9% and 1.1%, respectively.

## National Indices of employed personnel by sector

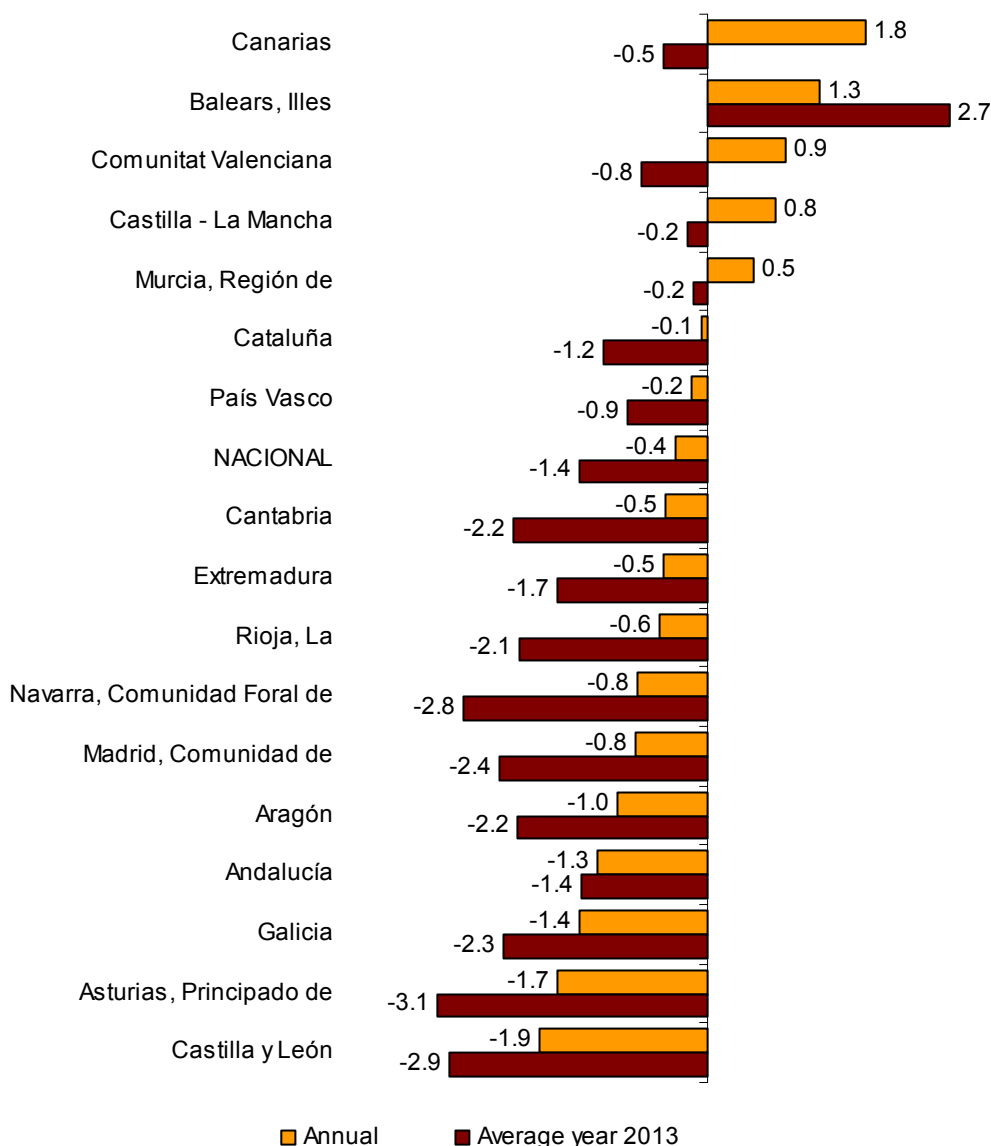
	Index	% variation		
		Monthly rate (%)	Annual rate (%)	Average year 2013
<b>GENERAL INDEX</b>	95.0	-0.1	-0.4	-1.4
1. Trade	95.5	0.5	-1.5	-1.9
1.1. Sale and repair of vehicles and motorcycles	86.8	-0.3	-3.0	-3.9
1.2. Wholesale trade	97.4	0.0	-1.4	-1.5
1.3. Retail trade	95.9	1.0	-1.3	-1.9
2. Other services	94.6	-0.5	0.4	-1.1
2.1. Transport and storage	93.4	-0.5	-0.8	-2.0
2.2. Accommodation	92.7	-1.1	1.0	-0.1
2.3. Information and communications	93.1	-0.1	-1.9	-3.2
2.4. Professional, scientific and technical activities	94.9	-0.7	-0.1	-1.3
2.5. Administrative and support service activities	97.9	0.1	2.1	-0.6

**Results by Autonomous Community. Variation rates of occupation**

Five Autonomous Communities registered positive rates in employment, as compared with December 2012. Canarias (1.8%), Illes Balears (1.3%) and Comunitat Valenciana (0.9%) registered the greatest increases.

In 2013, all Autonomous Communities registered a decrease in employment, except for Illes Balears (2.7%).

**General Index by Autonomous Community  
Annual rate of employed personnel**



## Services Sector Activity Indicators. Base 2010 December 2013

Provisional data

### 1. Monthly turnover indices by sector

	Index	% variation		
		Monthly	Annual	Average year 2013
<b>GENERAL INDEX</b>	<b>98.8</b>	<b>9.9</b>	<b>1.1</b>	<b>-2.1</b>
<b>1. TRADE</b>	<b>99.6</b>	<b>10.2</b>	<b>0.7</b>	<b>-1.9</b>
<b>1.1. SALE AND REPAIR OF VEHICLES</b>	<b>76.0</b>	<b>-2.3</b>	<b>9.2</b>	<b>-4.7</b>
- Sale of motor vehicles	75.4	-1.8	11.2	-4.5
- Maintenance and repair of motor vehicles	79.3	-4.5	-0.5	-5.5
<b>1.2. WHOLESALE TRADE AND COMMISSION TRADE</b>	<b>98.6</b>	<b>6.7</b>	<b>-0.2</b>	<b>-1.3</b>
- Wholesale on a fee or contract basis	124.7	25.5	4.6	0.8
- Wholesale of agricultural raw materials and live animals	107.4	1.6	0.1	-0.4
- Wholesale of food, beverages and tobacco	112.8	24.3	-2.0	-0.6
- Wholesale of household goods	93.3	-5.3	5.2	0.0
- Wholesale of information and communication equipment	96.1	21.5	5.2	-0.5
- Wholesale of other machinery, equipment and supplies	89.9	1.9	-1.5	-7.0
- Other specialised wholesale trade	91.1	-1.0	-3.5	-1.9
- Non-specialised wholesale trade	105.0	8.4	-3.3	-3.4
<b>1.3. RETAIL TRADE</b>	<b>108.3</b>	<b>19.7</b>	<b>0.4</b>	<b>-2.4</b>
<b>2. OTHER SERVICES</b>	<b>97.3</b>	<b>9.2</b>	<b>1.7</b>	<b>-2.5</b>
<b>2.1. TRANSPORTATION AND STORAGE SERVICES</b>	<b>97.3</b>	<b>0.8</b>	<b>2.0</b>	<b>-0.5</b>
Land transport	90.8	-4.3	2.1	-1.4
- Rail transport	93.5	0.7	4.3	2.0
- Taxi operation	93.2	-0.5	-0.7	-1.6
- Other passenger land transport	85.9	-7.3	-1.8	-5.8
- Freight transport by road and removal services	91.6	-4.4	2.8	-0.8
Water transport	73.7	1.1	-6.1	-11.1
Air transport	93.1	5.1	4.0	-1.2
Warehousing and support activities for transportation	108.8	5.5	1.9	1.3
Post and courier activities	90.7	1.2	1.1	-3.3
<b>2.2. ACCOMMODATION AND FOOD SERVICES ACTIVITIES</b>	<b>86.9</b>	<b>7.2</b>	<b>1.7</b>	<b>-0.1</b>
Accommodation	68.8	-5.9	6.3	2.9
Food and beverage service activities	94.9	11.8	0.5	-1.5
<b>2.3. INFORMATION AND COMMUNICATION</b>	<b>101.4</b>	<b>12.0</b>	<b>-0.9</b>	<b>-5.2</b>
Publishing activities	91.2	9.2	-1.2	-5.3
Motion picture, television programme production and music publishing activities	111.9	19.9	6.6	-9.9
Programming and broadcasting activities	115.2	17.6	4.4	-0.9
Telecommunications	87.3	8.6	-3.6	-7.5
Computer programming, consultancy and related activities	124.5	14.3	0.1	-1.6
Information service activities	114.5	15.7	0.2	-6.5
<b>2.4. PROFESSIONAL, SCIENTIFIC AND TECHNICAL ACTIVITIES</b>	<b>110.9</b>	<b>21.5</b>	<b>3.2</b>	<b>-3.7</b>
Legal, accounting and management consulting activities	115.8	23.8	5.3	-1.3
Architectural and engineering activities; technical testing and analysis	113.5	23.6	4.5	-4.3
Advertising and market research	104.7	14.4	0.1	-5.8
Other professional scientific and technical activities	92.5	25.6	-4.1	-7.2
<b>2.5. ADMINISTRATIVE AND SUPPORT SERVICE ACTIVITIES</b>	<b>86.0</b>	<b>5.0</b>	<b>3.5</b>	<b>-3.3</b>
Employment activities	99.0	-2.1	12.7	3.8
Travel agencies and tour operator services	58.5	-8.4	11.1	-3.2
Security and investigation activities	97.1	3.7	-1.7	-1.7
Cleaning activities	95.7	-0.2	-0.7	-1.9
Office administrative and other business support activities	110.5	32.8	0.1	-8.2

## 2. National turnover indices, adjusted for the calendar effect

	Adjusted index	% variation		
		Monthly	Annual	Average year 2013
<b>GENERAL INDEX</b>	<b>99.0</b>	<b>8.9</b>	<b>0.0</b>	<b>-2.0</b>
1. Trade	99.9	9.1	-0.5	-1.8
1.1. Sale and repair of vehicles	76.1	-1.6	6.2	-4.4
1.2. Wholesale trade	99.0	5.2	-1.7	-1.2
1.3. Retail trade	107.3	19.1	-0.8	-2.3
2. Other Services	97.4	8.6	1.1	-2.4
2.1. Transportation and storage	97.4	-0.1	0.9	-0.4
2.2. Accommodation and food service activities	86.8	7.6	2.1	0.1
2.3. Information and communication	101.4	11.2	-1.7	-5.1
2.4. Professional, scientific and technical activities	111.0	20.8	2.5	-3.8
2.5. Administrative and support service activities	86.0	4.5	2.9	-3.1

## 3. National turnover indices, adjusted for seasonal effects and by calendar

	index	% variation		
		Monthly	Annual	Average year 2013
<b>GENERAL INDEX</b>	<b>90.5</b>	<b>-0.7</b>	<b>0.1</b>	<b>-2.1</b>
1. Trade	89.6	-1.2	-0.5	-1.9
1.1. Sale and repair of vehicles	75.6	0.7	5.9	-4.8
1.2. Wholesale trade	91.4	-0.3	-1.7	-1.3
1.3. Retail trade	89.8	-3.3	-0.5	-2.4
2. Other Services	92.2	0.2	1.1	-2.5
2.1. Transportation and storage	98.7	0.0	0.5	-0.5
2.2. Accommodation and food service activities	93.3	-0.9	2.3	-0.3
2.3. Information and communication	89.2	0.2	-2.1	-5.2
2.4. Professional, scientific and technical activities	88.2	0.5	2.7	-4.1
2.5. Administrative and support service activities	93.2	1.1	2.7	-3.2



#### 4. National turnover indices Seasonally adjusted

		% variation		
		Annual <sup>1</sup>	Quarterly <sup>2</sup>	Monthly <sup>3</sup>
	2009	-13.5		
	2010	0.8		
	2011	-1.0		
	2012	-6.1		
	2013	-2.1		
2011	IVQ	-2.6	-1.8	
2012	IQ	-4.3	-1.5	
	IIQ	-6.8	-3.0	
	IIIQ	-6.0	0.2	
	IVQ	-7.3	-3.2	
2013	IQ	-5.7	0.2	
	IIQ	-2.5	0.2	
	IIIQ	-0.7	2.1	
	IVQ	0.6	-1.8	
2012	DEC	-6.5		0.9
2013	JAN	-5.3		0.8
	FEB	-5.0		-0.7
	MAR	-6.7		-1.3
	APR	-2.9		0.8
	MAY	-2.2		1.2
	JUN	-2.5		-0.7
	JUL	-0.4		1.2
	AUG	-3.8		3.2
	SEP	2.3		-3.2
	OCT	0.2		-0.9
	NOV	1.7		0.7
	DEC	0.1		-0.7

Note:

<sup>1</sup>**Annual rate:** Variation of a period over the same period of the previous year

<sup>2</sup>**Quarterly rate:** Variation of a quarter over the previous quarter. In the current quarter it is the average to date over the previous quarter

<sup>3</sup>**Monthly rate:** Variation of a month over the previous month

## 5. National employed personnel indices by branch of activity

	Index	% variation		
		Monthly	Annual	Average year 2013
<b>GENERAL INDEX</b>	<b>95.0</b>	<b>-0.1</b>	<b>-0.4</b>	<b>-1.4</b>
1. TRADE	95.5	0.5	-1.5	-1.9
1.1. SALE AND REPAIR OF VEHICLES	86.8	-0.3	-3.0	-3.9
- Sale of motor vehicles	83.6	0.2	-3.6	-5.3
- Maintenance and repair of motor vehicles	90.3	-0.8	-2.4	-2.4
1.2. WHOLESALE TRADE AND COMMISSION TRADE	97.4	0.0	-1.4	-1.5
- Wholesale on a fee or contract basis	97.1	-0.5	0.6	-0.9
- Wholesale of agricultural raw materials and live animals	97.5	-1.3	-2.2	-1.3
- Wholesale of food, beverages and tobacco	108.5	0.0	0.5	0.0
- Wholesale of household goods	93.7	0.9	-3.3	-1.5
- Wholesale of information and communication equipment	94.8	0.4	-0.5	-1.9
- Wholesale of other machinery, equipment and supplies	91.1	-0.6	-1.5	-2.1
- Other specialised wholesale trade	88.7	-0.7	-3.4	-3.5
- Non-specialised wholesale trade	90.9	-0.6	-6.6	-6.4
1.3. RETAIL TRADE	95.9	1.0	-1.3	-1.9
2. OTHER SERVICES	94.6	-0.5	0.4	-1.1
2.1. TRANSPORTATION AND STORAGE SERVICES	93.4	-0.5	-0.8	-2.0
Land transport	94.1	-0.6	0.0	-1.5
- Rail transport	99.0	0.0	-0.5	-0.6
- Taxi operation	94.9	-0.5	-0.8	-1.8
- Other passenger land transport	95.2	-1.1	-2.0	-1.9
- Freight transport by road and removal services	93.2	-0.6	0.8	-1.4
Water transport	81.7	-2.1	0.9	-3.5
Air transport	87.0	-0.9	-7.0	-5.3
Warehousing and support activities for transportation	95.2	-0.2	-1.1	-1.9
Post and courier activities	88.4	-0.3	-2.3	-3.7
2.2. ACCOMMODATION AND FOOD SERVICES ACTIVITIES	92.7	-1.1	1.0	-0.1
Accommodation	77.8	-5.2	0.1	-0.6
Food and beverage service activities	96.9	-0.2	1.2	0.1
2.3. INFORMATION AND COMMUNICATION	93.1	-0.1	-1.9	-3.2
Publishing activities	82.3	-0.6	-4.0	-5.6
Motion picture, television programme production and music publishing activities	73.8	0.6	-7.2	-11.3
Programming and broadcasting activities	88.7	0.6	-2.9	-6.4
Telecommunications	87.3	-0.3	-3.9	-4.6
Computer programming, consultancy and related activities	101.6	-0.2	-0.1	-0.9
Information service activities	95.3	-0.6	-3.0	-3.2
2.4. PROFESSIONAL, SCIENTIFIC AND TECHNICAL ACTIVITIES	94.9	-0.7	-0.1	-1.3
Legal, accounting and management consulting activities	98.0	-0.3	0.5	-0.3
Architectural and engineering activities; technical testing and analysis	89.9	-2.5	-0.9	-2.1
Advertising and market research	93.2	1.3	-3.1	-4.1
Other professional scientific and technical activities	97.5	1.1	2.8	-0.5
2.5. ADMINISTRATIVE AND SUPPORT SERVICE ACTIVITIES	97.9	0.1	2.1	-0.6
Employment activities	111.1	0.1	10.5	3.6
Travel agencies and tour operator services	86.7	-0.9	-1.0	-3.7
Security and investigation activities	92.2	0.5	-1.2	-2.9
Cleaning activities	94.9	-0.5	0.5	-0.8
Office administrative and other business support activities	100.8	1.9	1.5	-1.1

## 6. General turnover index by Autonomous Community

	Index	% variation		
		Monthly	Annual	Average year 2013
<b>NATIONAL INDEX</b>	<b>98.8</b>	<b>9.9</b>	<b>1.1</b>	<b>-2.1</b>
Andalucía	98.1	12.2	0.0	-2.9
Aragón	99.0	6.8	2.7	-0.9
Asturias, Principado de	94.2	12.1	0.2	-3.1
Balears, Illes	76.1	6.1	2.1	5.3
Canarias	105.6	9.0	2.3	-1.2
Cantabria	95.2	15.4	-3.6	-6.9
Castilla y León	99.7	8.3	-0.4	-1.0
Castilla-La Mancha	94.5	7.6	1.3	-2.7
Cataluña	98.7	6.8	2.0	-2.1
Comunitat Valenciana	101.5	10.1	1.8	-2.2
Extremadura	94.2	13.3	-2.9	-4.5
Galicia	108.5	18.0	1.5	-2.7
Madrid, Comunidad de	98.8	10.3	1.1	-2.3
Murcia, Región de	100.5	10.9	-0.5	0.0
Navarra, Comunidad Foral de	91.0	4.2	0.3	-4.5
País Vasco	99.1	10.0	0.2	-3.6
Rioja, La	101.7	11.8	2.5	0.8

## 7. General employed personnel index by Autonomous Community

	Index	% variation		
		Monthly	Annual	Average year 2013
<b>NATIONAL INDEX</b>	<b>95.0</b>	<b>-0.1</b>	<b>-0.4</b>	<b>-1.4</b>
Andalucía	94.2	-0.2	-1.3	-1.4
Aragón	92.7	0.4	-1.0	-2.2
Asturias, Principado de	91.4	0.4	-1.7	-3.1
Balears, Illes	83.0	-5.0	1.3	2.7
Canarias	97.8	-0.1	1.8	-0.5
Cantabria	93.9	0.1	-0.5	-2.2
Castilla y León	93.4	-0.4	-1.9	-2.9
Castilla-La Mancha	93.6	0.1	0.8	-0.2
Cataluña	96.2	0.0	-0.1	-1.2
Comunitat Valenciana	98.3	0.2	0.9	-0.8
Extremadura	94.7	0.1	-0.5	-1.7
Galicia	94.0	0.3	-1.4	-2.3
Madrid, Comunidad de	94.5	0.0	-0.8	-2.4
Murcia, Región de	96.8	0.2	0.5	-0.2
Navarra, Comunidad Foral de	94.4	-1.0	-0.8	-2.8
País Vasco	97.6	0.5	-0.2	-0.9
Rioja, La	97.0	-0.1	-0.6	-2.1