

17 February 2015

Services Sector Activity Indicators (SSAI). Base 2010
December 2014 and year 2014. *Provisional data*

The monthly variation of turnover¹ for the market Services Sector is 0.0% after adjusting for seasonal and calendar effects

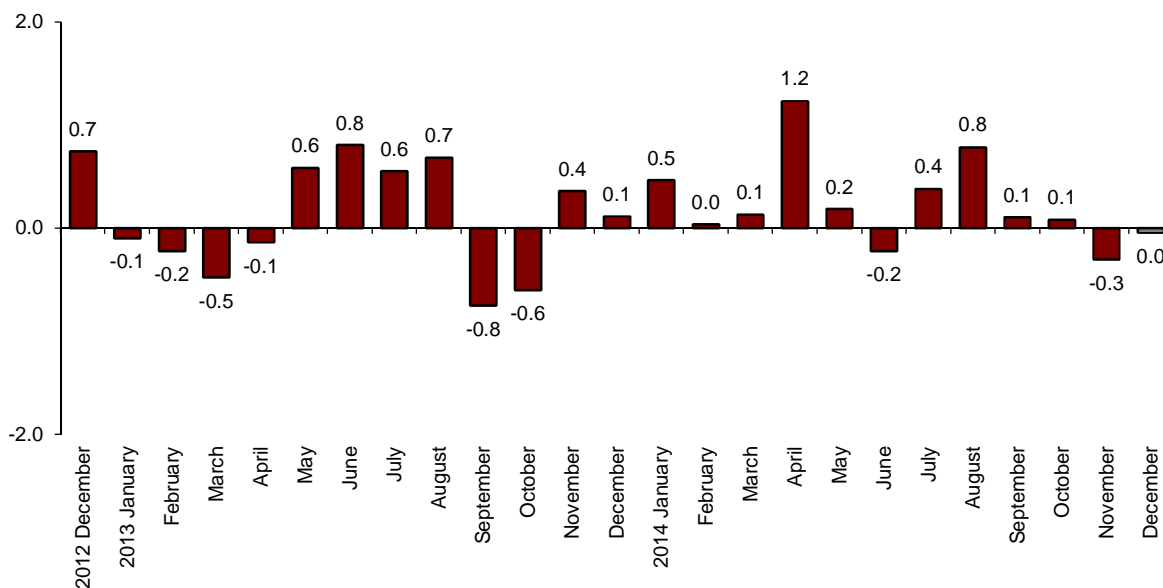
The annual rate of turnover stands at 2.9% in the seasonally and calendar adjusted series and at 4.7% in the original series

In 2014 as a whole, the turnover increases by 2.6% in the adjusted series and by 2.7% in the original series

Monthly evolution of the turnover for the Market Services Sector

The monthly variation of the general index of the turnover for the Market Services Sector between December and November 2014 was 0.0%, after adjusting for seasonally and calendar effects. This rate was three tenths higher than that registered in November.

**General index of the turnover for the Market Services Sector
Adjusted for seasonal and calendar effects. Monthly rate**

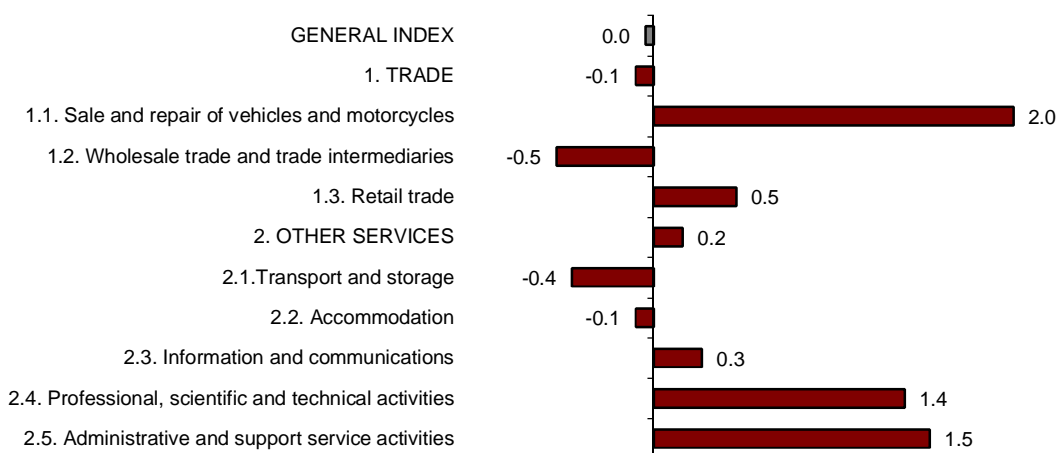


¹ As explained in the methodology for this value index, the information is presented in current terms (nominal terms), that is, without adjusting the effects in the price variation thereof.

Trade registered a monthly variation of -0.1% and the variation of Other services was 0.2% , after adjusting for seasonal and calendar effects.

Three sectors registered negative monthly rates, being *Wholesale trade and trade intermediaries* (-0.5%), *Transport and storage* (-0.4%) and *Accommodation* (-0.1%). Among the sectors that registered positive monthly rates, *Sale and repair of vehicles and motorcycles* (2.0%), *Administrative and support service activities* (1.5%) and *Professional, scientific and technical activities* (1.4%) registered the highest rates.

**General and by sectors turnover Index
Adjusted for seasonal and calendar effects. Monthly rate**



A more detailed analysis showed the activities that registered the highest monthly rates and those that registered the greatest decreases in December.

**Activities with the greatest monthly rates of the Services Sector turnover index
adjusted for seasonal and calendar effects**

Activity (CNAE-2009 groups)	Monthly rate(%)
Office administrative and other business support activities	4.3
Legal, accounting and management consulting activities	3.8
Travel agencies and tour operator services	3.6

**Activities with the lowest monthly rates of the Services Sector turnover index
adjusted for seasonal and calendar effects**

Activity (CNAE-2009 groups)	Monthly rate(%)
Publishing activities	-4.8
Warehousing and support activities for transportation	-3.3
Security and investigation activities	-1.7

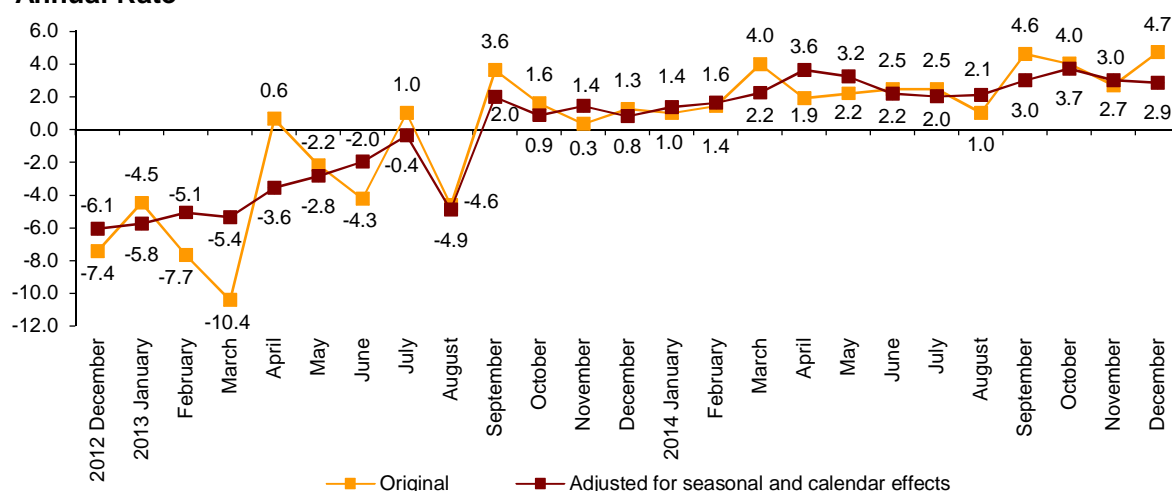
Annual turnover evolution rates for the Market Services sector

In December, the general Index of the turnover for the Market Services Sector, after adjusting for seasonal and calendar effects, registered a variation of 2.9%, as compared with the same month of 2013. This rate was one tenth below that registered in November.

The original series registered an annual variation of 4.7%, that is, 2.0 points over that recorded in November.

In 2014 as a whole, the turnover of the Market Services Sector registered a 2.6% variation in the series adjusted for seasonal and calendar effects, and a 2.7% variation in the original series.

General index of the turnover for the Market Services Sector
Annual Rate



After adjusting for seasonal and calendar effects, Trade increased by 3.1% and Other services did so by 2.2%, as compared with the same month of the previous year.

In 2014 as whole, and also with data from the adjusted series, Trade increased by 2.9% and Other services did so by 1.9%.

Annual rates of the Turnover index for the Market Services Sector: General and by sector

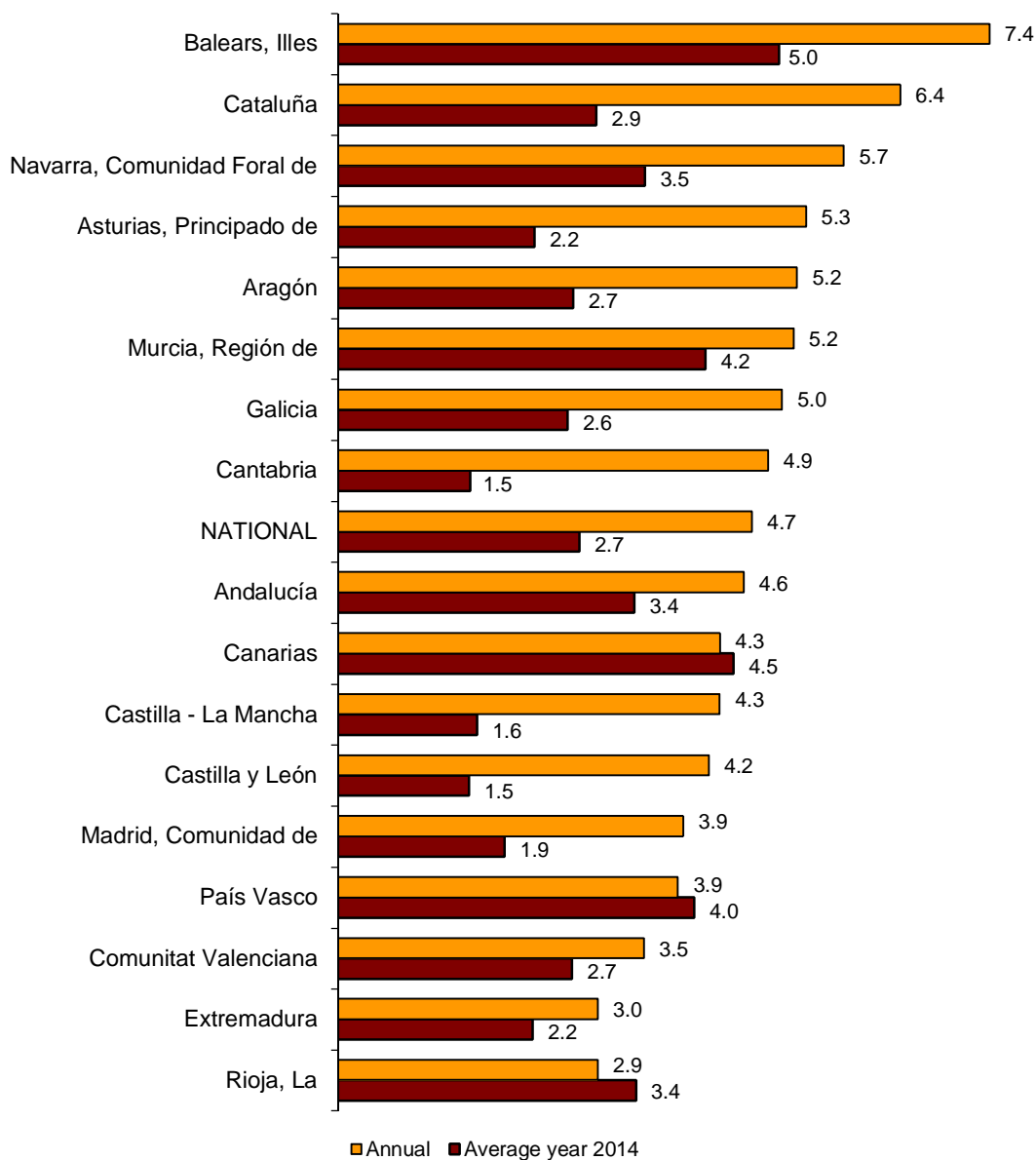
	Original index	Seasonally adjusted index	
	Annual rate (%)	Annual rate (%)	Average year 2014
GENERAL INDEX	4.7	2.9	2.6
1. TRADE	5.5	3.1	2.9
1.1. Sale and repair of vehicles and motorcycles	18.4	17.1	11.7
1.2. Wholesale trade	5.3	2.9	3.3
1.3. Retail trade	3.0	4.2	0.6
2. OTHER SERVICES	3.1	2.2	1.9
2.1. Transport and storage	4.5	3.6	4.1
2.2. Accommodation	3.3	3.4	4.0
2.3. Information and communications	1.1	-0.2	-0.3
2.4. Professional, scientific and technical activities	3.4	2.0	-0.4
2.5. Administrative and support service activities	3.3	2.0	1.0

Results by Autonomous Community. Annual turnover variation rates. Original series.

In December, all the Autonomous Communities registered increases in their turnover in the Market Service Sector. The greatest increases were recorded in Illes Balears (7.4%) and Cataluña (6.4%).

In 2014 as a whole, all Autonomous Communities recorded positive rates. Illes Balears (5.0%) and Canarias (4.5%) were the ones increasing the most.

**General Indices: National and by Autonomous Community
Turnover Annual Rate**



Evolution of employed personnel

Employment in the Market Services Sector registered an increase of 1.8% in December, as compared with the same month of 2013. This rate was one tenth over that registered in November.

In 2014 as a whole, employment increased by 1.1% as compared to 2013.

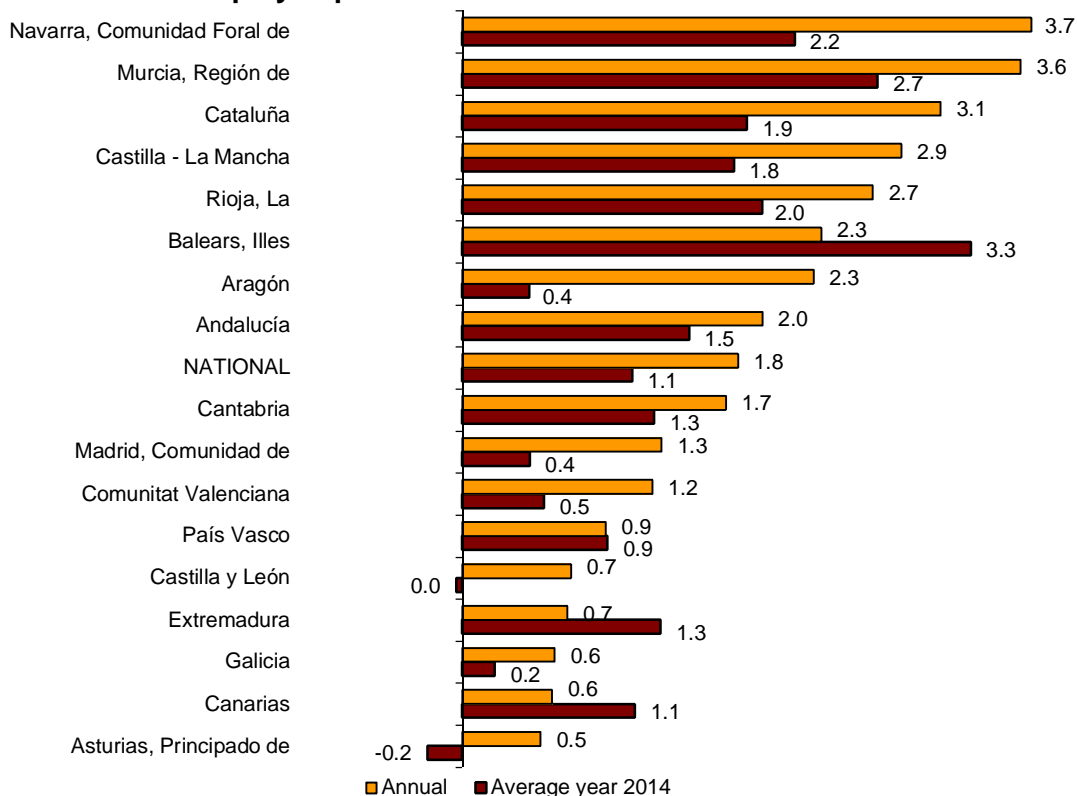
National Indices of employed personnel by sector

	Index	Rate (%)		
		Monthly	Annual	Average year 2014
GENERAL INDEX	96.7	0.0	1.8	1.1
1. TRADE	96.9	0.5	1.5	0.4
1.1. Sale and repair of vehicles and motorcycles	87.9	-0.2	1.3	-0.6
1.2. Wholesale trade	99.9	-0.3	2.6	1.2
1.3. Retail trade	96.7	1.1	0.8	0.1
2. OTHER SERVICES	96.5	-0.4	2.0	1.6
2.1. Transport and storage	95.2	0.0	2.0	0.7
2.2. Accommodation	94.9	-0.5	2.2	2.1
2.3. Information and communications	94.6	0.1	1.6	0.1
2.4. Professional, scientific and technical activities	96.2	-0.4	1.2	0.3
2.5. Administrative and support service activities	100.5	-0.9	2.6	3.5

Results by Autonomous Community. Annual variation rates of occupation

In December, all Autonomous Communities registered positive annual rates in employment. In 2014 as whole, Principado de Asturias (-0.2%) was the only one to decrease.

General Indices: National and by Autonomous Community Annual rate of employed personnel



Services Sector Activity Indicators. Base 2010 December 2014

Provisional data

1. Turnover indices: General and by sector. Adjusted for seasonal and calendar effects

	Index	Rate (%)		
		Monthly	Annual	Average year 2014
GENERAL INDEX	94.0	0.0	2.9	2.6
1. TRADE	93.5	-0.1	3.1	2.9
1.1. Sale and repair of vehicles and motorcycles	87.9	2.0	17.1	11.7
1.2. Wholesale trade	95.4	-0.5	2.9	3.3
1.3. Retail trade	93.8	0.5	4.2	0.6
2. OTHER SERVICES	94.6	0.2	2.2	1.9
2.1. Transport and storage	103.7	-0.4	3.6	4.1
2.2. Accommodation	98.0	-0.1	3.4	4.0
2.3. Information and communications	89.0	0.3	-0.2	-0.3
2.4. Professional, scientific and technical activities	89.5	1.4	2.0	-0.4
2.5. Administrative and support service activities	94.5	1.5	2.0	1.0

2. Turnover indices: General and by sector. Adjusted for calendar effects

	Index	Rate (%)	
		Annual	Average year 2014
GENERAL INDEX	102.1	2.8	2.6
1. TRADE	103.5	3.2	3.0
1.1. Sale and repair of vehicles and motorcycles	89.2	17.4	11.7
1.2. Wholesale trade	102.1	2.6	3.3
1.3. Retail trade	111.8	4.2	0.7
2. OTHER SERVICES	99.6	2.1	1.9
2.1. Transport and storage	100.1	2.7	4.2
2.2. Accommodation	90.1	3.9	4.2
2.3. Information and communications	101.6	0.0	-0.3
2.4. Professional, scientific and technical activities	113.9	2.4	-0.3
2.5. Administrative and support service activities	88.6	2.5	0.8

3. National turnover indices: General and by branch of activity.

Original series

	Index	Rate (%)	
		Annual	Average year 2014
GENERAL INDEX	103.7	4.7	2.7
1. TRADE	105.4	5.5	3.2
1.1. SALE AND REPAIR OF VEHICLES	89.8	18.4	11.7
- Sale of motor vehicles	90.5	20.4	14.1
- Maintenance and repair of motor vehicles	85.2	7.2	0.0
1.2. WHOLESALE TRADE AND COMMISSION TRADE	104.3	5.3	3.5
- Wholesale on a fee or contract basis	126.3	0.3	1.8
- Wholesale of agricultural raw materials and live animals	115.7	6.9	2.7
- Wholesale of food, beverages and tobacco	118.2	4.5	2.1
- Wholesale of household goods	102.0	8.8	5.7
- Wholesale of information and communication equipment	103.8	7.5	4.4
- Wholesale of other machinery, equipment and supplies	93.2	3.4	1.6
- Other specialised wholesale trade	94.8	3.2	3.5
- Non-specialised wholesale trade	109.9	4.1	3.8
1.3. RETAIL TRADE	111.5	3.0	0.5
2. OTHER SERVICES	100.5	3.1	2.0
2.1. TRANSPORTATION AND STORAGE SERVICES	101.5	4.5	4.3
Land transport	96.0	5.8	3.2
- Rail transport	100.2	7.2	7.3
- Taxi operation	97.5	4.3	1.6
- Other passenger land transport	86.0	-0.2	0.6
- Freight transport by road and removal services	97.6	7.0	3.4
Water transport	73.5	0.6	1.2
Air transport	95.3	2.2	6.2
Warehousing and support activities for transportation	112.7	3.6	5.3
Post and courier activities	96.1	6.0	2.0
2.2. ACCOMMODATION AND FOOD SERVICES ACTIVITIES	89.7	3.3	4.1
Accommodation	72.6	5.4	5.9
Food and beverage service activities	97.3	2.6	3.3
2.3. INFORMATION AND COMMUNICATION	102.6	1.1	-0.2
Publishing activities	86.0	-5.8	1.7
Motion picture, television programme production and music publishing activities	115.3	3.1	6.0
Programming and broadcasting activities	118.8	3.1	4.9
Telecommunications	81.2	-7.0	-6.6
Computer programming, consultancy and related activities	139.7	12.1	5.5
Information service activities	122.1	6.7	2.2
2.4. PROFESSIONAL, SCIENTIFIC AND TECHNICAL ACTIVITIES	114.8	3.4	-0.2
Legal, accounting and management consulting activities	123.0	6.0	1.0
Architectural and engineering activities; technical testing and analysis	113.4	-0.5	-3.2
Advertising and market research	109.2	4.4	1.7
Other professional scientific and technical activities	97.3	5.8	1.0
2.5. ADMINISTRATIVE AND SUPPORT SERVICE ACTIVITIES	89.3	3.3	0.9
Employment activities	119.2	20.2	16.8
Travel agencies and tour operator services	63.4	7.8	0.3
Security and investigation activities	100.2	2.4	2.4
Cleaning activities	95.8	-0.4	-0.9
Office administrative and other business support activities	108.0	-2.7	-3.1

4. Employed personnel indices: General and by branch of activity

	Index	Rate (%)		
		Monthly	Annual	Average year 2014
GENERAL INDEX	96.7	0.0	1.8	1.1
1. TRADE	96.9	0.5	1.5	0.4
1.1. SALE AND REPAIR OF VEHICLES	87.9	-0.2	1.3	-0.6
- Sale of motor vehicles	84.7	-0.3	1.3	-0.6
- Maintenance and repair of motor vehicles	91.4	-0.1	1.3	-0.6
1.2. WHOLESALE TRADE AND COMMISSION TRADE	99.9	-0.3	2.6	1.2
- Wholesale on a fee or contract basis	101.2	0.1	4.1	1.6
- Wholesale of agricultural raw materials and live animals	101.0	-2.3	3.4	2.7
- Wholesale of food, beverages and tobacco	111.9	-0.6	3.1	2.5
- Wholesale of household goods	93.6	-0.2	0.3	-0.6
- Wholesale of information and communication equipment	98.4	0.9	3.7	1.2
- Wholesale of other machinery, equipment and supplies	94.1	-0.1	3.2	1.4
- Other specialised wholesale trade	91.6	0.0	3.0	0.6
- Non-specialised wholesale trade	91.8	-1.8	1.4	-1.2
1.3. RETAIL TRADE	96.7	1.1	0.8	0.1
2. OTHER SERVICES	96.5	-0.4	2.0	1.6
2.1. TRANSPORTATION AND STORAGE SERVICES	95.2	0.0	2.0	0.7
Land transport	96.5	-0.3	2.7	1.4
- Rail transport	97.0	0.0	-2.0	-1.4
- Taxi operation	94.8	-0.4	0.0	-1.3
- Other passenger land transport	95.9	-0.9	0.9	-0.7
- Freight transport by road and removal services	96.8	-0.1	3.9	2.6
Water transport	83.0	-0.9	1.5	-0.2
Air transport	85.1	-1.5	-2.2	-2.6
Warehousing and support activities for transportation	97.4	0.6	2.3	0.6
Post and courier activities	87.1	0.3	-1.5	-1.9
2.2. ACCOMMODATION AND FOOD SERVICES ACTIVITIES	94.9	-0.5	2.2	2.1
Accommodation	78.8	-5.6	1.2	3.5
Food and beverage service activities	99.4	0.7	2.5	1.7
2.3. INFORMATION AND COMMUNICATION	94.6	0.1	1.6	0.1
Publishing activities	82.5	-0.4	0.3	-1.7
Motion picture, television programme production and music publishing activities	75.3	2.1	2.1	-3.7
Programming and broadcasting activities	88.6	0.7	-0.3	-2.2
Telecommunications	86.4	-0.2	-0.9	-1.8
Computer programming, consultancy and related activities	104.4	0.0	2.8	1.7
Information service activities	96.2	1.1	1.1	-0.6
2.4. PROFESSIONAL, SCIENTIFIC AND TECHNICAL ACTIVITIES	96.2	-0.4	1.2	0.3
Legal, accounting and management consulting activities	99.5	0.3	1.2	0.7
Architectural and engineering activities; technical testing and analysis	90.4	-2.5	0.3	-0.5
Advertising and market research	96.2	2.4	4.0	0.1
Other professional scientific and technical activities	98.6	0.2	1.0	1.6
2.5. ADMINISTRATIVE AND SUPPORT SERVICE ACTIVITIES	100.5	-0.9	2.6	3.5
Employment activities	125.1	-2.3	12.2	18.6
Travel agencies and tour operator services	88.7	-1.0	2.7	1.8
Security and investigation activities	93.7	-0.1	1.3	0.4
Cleaning activities	92.9	-1.7	-1.7	-0.8
Office administrative and other business support activities	105.6	2.4	4.7	3.2

5. Turnover indices: National and by Autonomous Community

	Index	Rate (%)	
		Annual	Average year 2014
NATIONAL	103.7	4.7	2.7
Andalucía	102.7	4.6	3.4
Aragón	104.4	5.2	2.7
Asturias, Principado de	99.6	5.3	2.2
Balears, Illes	82.3	7.4	5.0
Canarias	110.3	4.3	4.5
Cantabria	99.6	4.9	1.5
Castilla y León	104.2	4.2	1.5
Castilla-La Mancha	98.8	4.3	1.6
Cataluña	104.9	6.4	2.9
Comunitat Valenciana	105.3	3.5	2.7
Extremadura	97.4	3.0	2.2
Galicia	114.3	5.0	2.6
Madrid, Comunidad de	103.1	3.9	1.9
Murcia, Región de	106.0	5.2	4.2
Navarra, Comunidad Foral de	96.2	5.7	3.5
País Vasco	102.7	3.9	4.0
Rioja, La	104.5	2.9	3.4

6. Employed personnel indices: National and by Autonomous Community

	Index	Rate (%)		
		Monthly	Annual	Average year 2014
NATIONAL	96.7	0.0	1.8	1.1
Andalucía	96.0	-0.4	2.0	1.5
Aragón	94.7	1.2	2.3	0.4
Asturias, Principado de	91.6	0.0	0.5	-0.2
Balears, Illes	85.0	-4.6	2.3	3.3
Canarias	98.7	0.1	0.6	1.1
Cantabria	95.4	0.1	1.7	1.3
Castilla y León	94.0	0.2	0.7	0.0
Castilla-La Mancha	96.5	0.9	2.9	1.8
Cataluña	99.2	0.3	3.1	1.9
Comunitat Valenciana	99.7	0.1	1.2	0.5
Extremadura	95.4	0.1	0.7	1.3
Galicia	94.4	-0.4	0.6	0.2
Madrid, Comunidad de	95.7	0.2	1.3	0.4
Murcia, Región de	100.3	-0.2	3.6	2.7
Navarra, Comunidad Foral de	97.8	0.0	3.7	2.2
País Vasco	98.4	0.0	0.9	0.9
Rioja, La	99.7	0.0	2.7	2.0