

10 December 2013

Harmonised Labour Cost Index (HLCI). Base 2008
Third quarter of 2013. *Provisional data*

The cost per hour worked increases 0.6% in the third quarter of 2013, as compared to the same period of 2012

After adjusting for calendar and seasonal effects, the quarterly variation is 0.5%

The cost per hour worked increased 0.6% in the third quarter of 2013, as compared with the same period of the previous year. After adjusting the calendar and seasonal effects, the cost per hour worked stood at 0.2%.

In turn, the provisional data for the Harmonised Labour Cost Index corresponding to the second quarter of 2013 was reviewed, with the final index standing at 104.3 points. Adjusted for calendar and seasonal effects, the growth rate stood at -0.3%.

Evolution of the Harmonised Labour Cost Index in the second quarter of 2013, by activity section

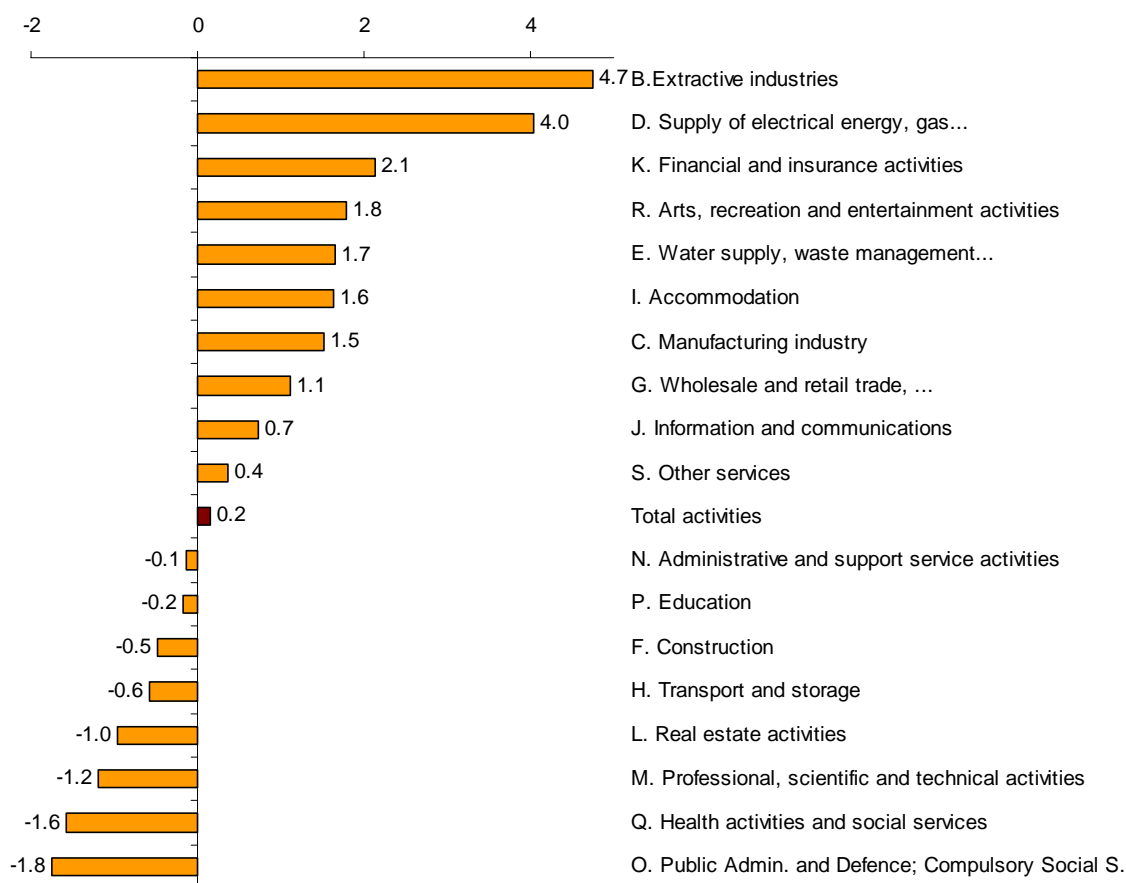
	General index Base year 2008		Index adjusted for calendar and seasonal effects	
	Index	Rate	Index	Rate
TOTAL ACTIVITIES (Quarter-on-quarter rate)	112.3	7.7	107.8	0.5
TOTAL ACTIVITIES (Interannual rate)	112.3	0.6	107.8	0.2
INTERANNUAL DATA BY ACTIVITY SECTION				
B. Extractive industries	130.6	2.7	131.9	4.7
C. Manufacturing industry	120.1	1.6	112.4	1.5
D. Supply of electrical energy, gas, steam and air conditioning	115.3	4.1	119.1	4.0
E. Water supply, waste management and decontamination activities	111.5	2.1	108.5	1.7
F. Construction	111.6	-0.8	112.8	-0.5
G. Wholesale and retail trade, repair of motor vehicles and motorcycles	114.6	1.1	112.5	1.1
H. Transport and storage	107.7	-0.5	107.0	-0.6
I. Accommodation	108.1	1.6	109.2	1.6
J. Information and communications	114.4	0.8	107.1	0.7
K. Financial and insurance activities	122.9	6.6	112.1	2.1
L. Real estate activities	106.3	-1.0	103.5	-1.0
M. Professional, scientific and technical activities	115.9	-1.1	108.5	-1.2
N. Administrative and support service activities	108.6	0.0	105.1	-0.1
O. Public Administration and Defence; Compulsory Social Security	102.0	-1.6	101.7	-1.8
P. Education	121.5	1.3	101.4	-0.2
Q. Health activities and social services	104.2	-0.9	98.3	-1.6
R. Arts, recreation and entertainment activities	108.1	-0.5	107.5	1.8
S. Other services	116.5	0.0	112.5	0.4

Results, by activity section

In the third quarter, the sections of economic activity with the greatest growth were *Financial and insurance activities* (6.6%), *Water supply, waste management and decontamination activities* (4.1%). In turn, *Public Administration and Defence* (−1.6%) and *Professional, scientific and technical activities* (−1.1%) registered the greatest decreases.

After adjusting for seasonal and calendar effects, the economic activities with the greatest annual rates were *Extractive industries* (4.7%), *Supply of electrical energy, gas, steam and air conditioning* (4.0%). In turn, the greatest decreases were registered in *Public Administration and Defence* (−1.8%) and *Health activities and social services* (−1.6%).

Interannual rate (3Q2013 as compared with 3Q2012) of the index adjusted for the seasonal and calendar effects, by activity section of the CNAE-09

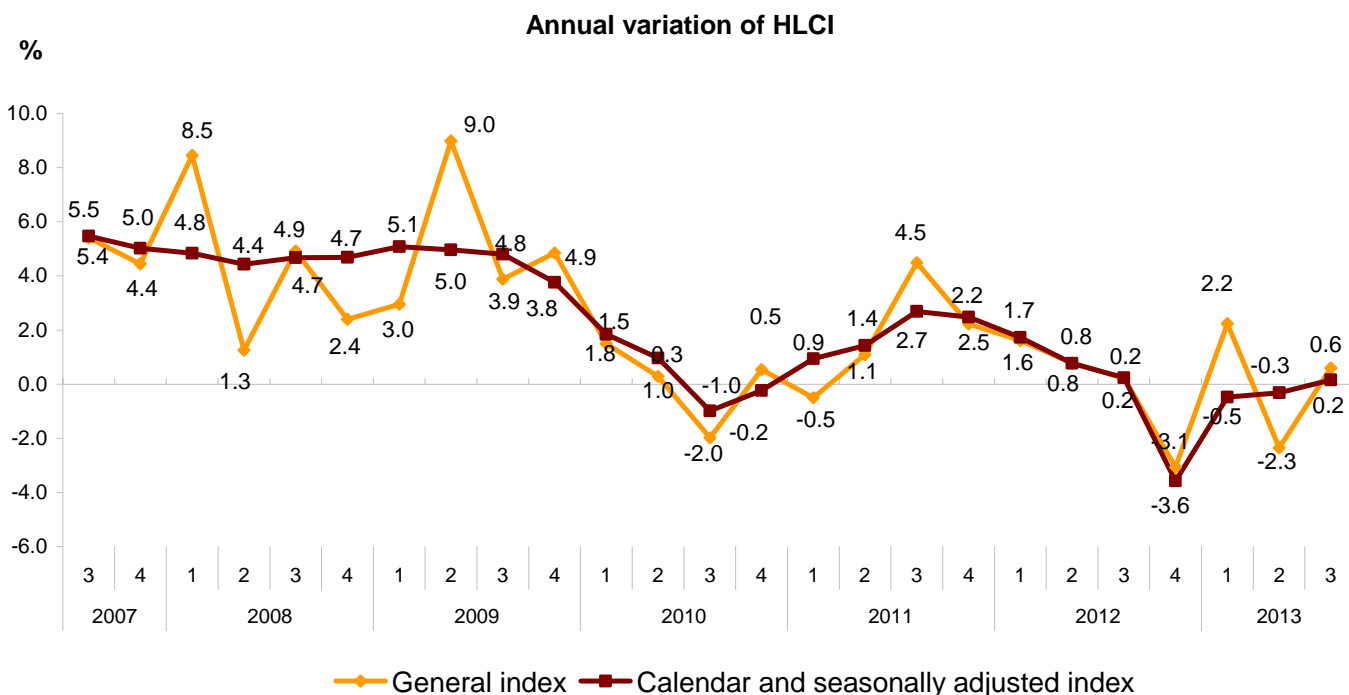


Evolution of the Index

The HLCI increased 0.6%, as compared with the third quarter of the previous year. In turn, the HLCI adjusted for calendar and seasonal effects registered a variation of 0.2%.

Annual variations

General index, calendar and seasonally adjusted index



Evolution of the quarterly rate

The variation in the third quarter of 2013, as compared with the second quarter of the same year, for the calendar and seasonally adjusted series, registered this quarter a variation of 0.5%.

Evolution of the quarterly rate for the seasonally and calendar adjusted series (variation in the third quarter, as compared with the second quarter of the same year)

