

21 March 2014

Industrial Turnover Indices (ITI). Base 2010
January 2014. *Provisional data*

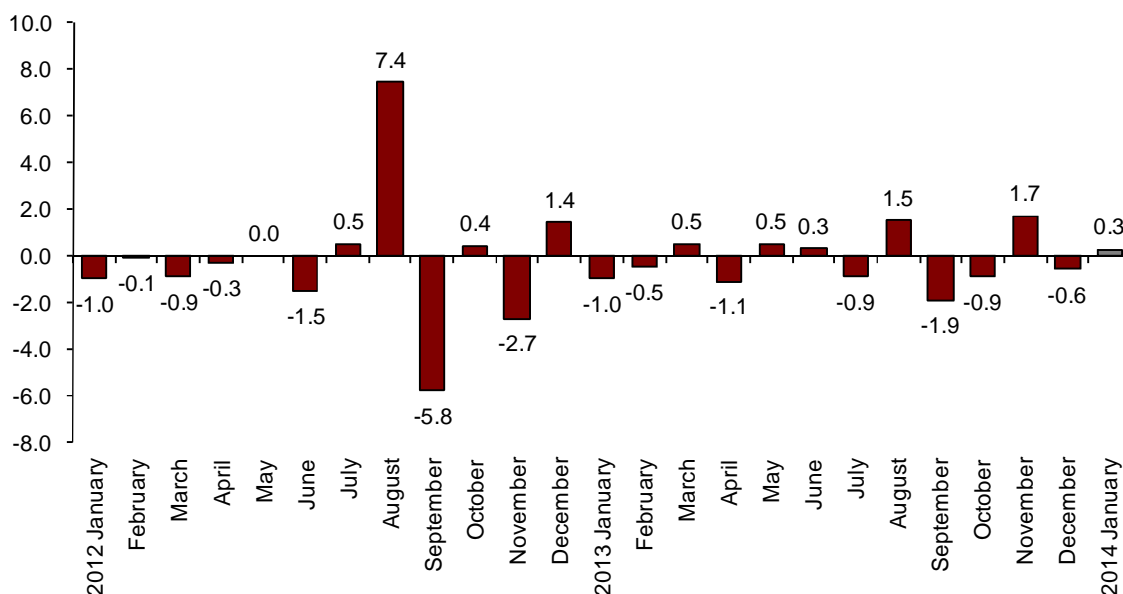
The monthly variation of the General Industry Turnover Index stands at 0.3%, after adjusting the seasonal and calendar effects

The annual rate stands at -1.1% in the seasonally and calendar adjusted series and at -2.5% in the original series

Monthly evolution of the Industry Turnover

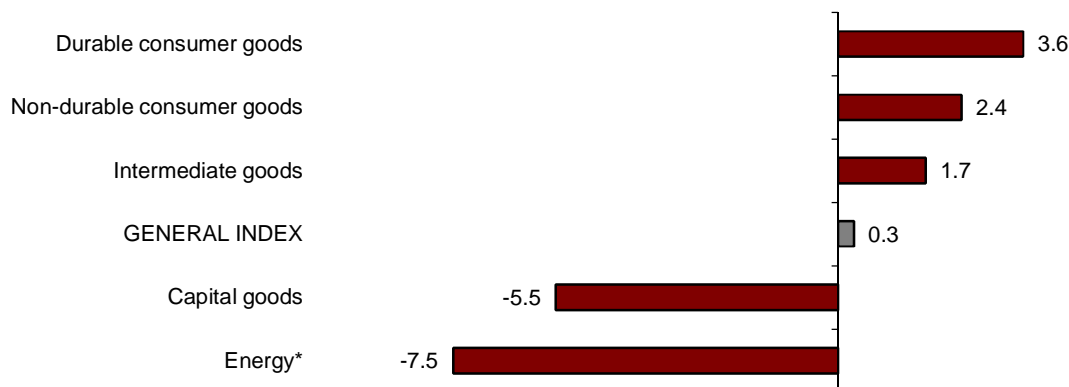
In January, the General Industry Turnover Index (ITI) registered a 0.3% variation, as compared with December 2013, after adjusting for the seasonal and calendar effects. This rate was nearly one point higher than that of the previous month.

Turnover General Index
Adjusted for seasonal and calendar effects. Monthly rate



By economic destination of the goods, Durable consumer goods (3.6%), Non-durable consumer goods (2.4%) and Intermediate goods (1.7%) registered an increase in the value of the orders received in January, as compared with the previous month. In turn, Energy (-7.5%) and Capital goods (-5.5%) registered a decrease in the value of the orders received.

**Turnover indices: General and by economic destination
Adjusted for seasonal and calendar effects. Monthly rate**



*Energy does not include electric power supply, nor water supply

A more detailed analysis showed the branches of activity with the highest and the lowest monthly rates in January.

**Branches of activity with the highest monthly rates of the Industrial Turnover Index,
Adjusted for seasonal and calendar effects**

Branch of activity (Section of the CNAE 2009)	Monthly rate (%)
Manufacture of wood and of products of wood and cork, except furniture; basketmaking and wickerwork	9.2
Metallurgy; manufacture of iron, steel and ferro-alloy products	7.4
Manufacture of pharmaceutical products	5.7

**Branches of activity with the lowest monthly rates of the Industrial Turnover Index,
Adjusted for seasonal and calendar effects**

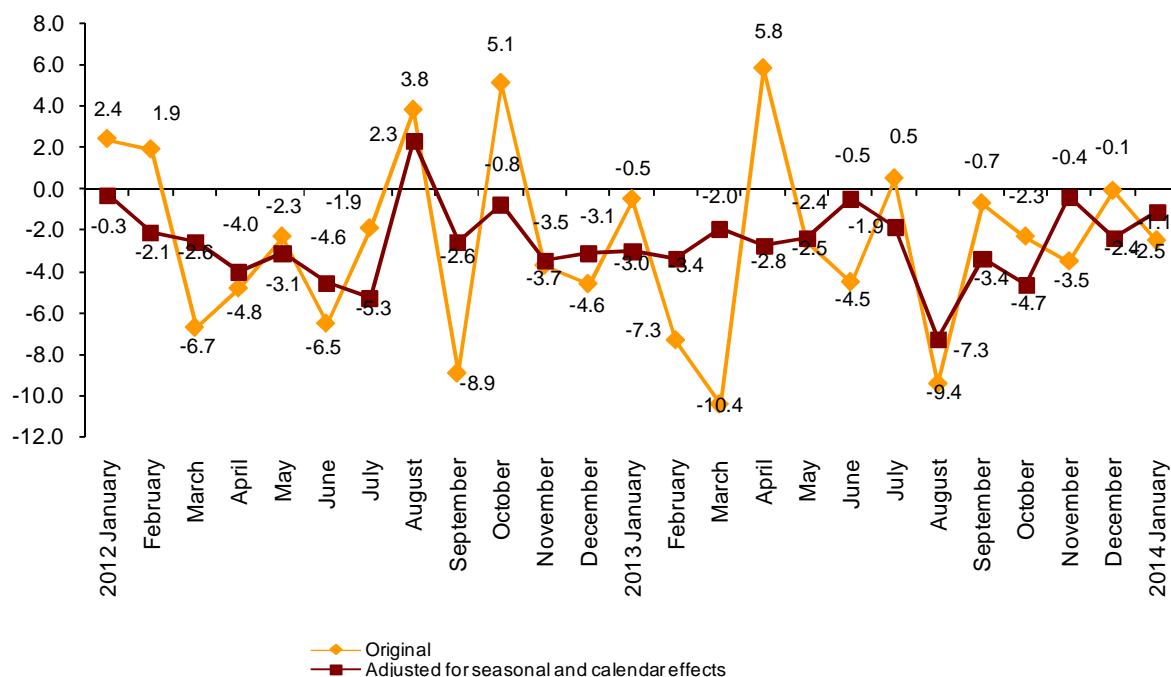
Branch of activity (Section of the CNAE 2009)	Monthly rate (%)
Extraction of anthracite, coal and lignite	-20.8
Manufacture of other transport material	-15.2
Manufacture of coke and refined petroleum products	-7.0

Annual evolution of the Industrial Turnover indices

The Industrial Turnover Index (ITI), after adjusting for seasonal and calendar effects, registered a variation of -1.1% in January, as compared with the same month of the previous year; that is, 1.3 points higher than that registered in December 2013.

The original series of the ITI registered an annual variation of -2.5% , that is, two points and a half lower than that registered in the previous month.

General Industrial Turnover Index Annual rates



By economic destination of the goods, four out of the five sectors analysed registered negative annual rates after adjusting for seasonal and calendar effects. *Energy* (-10.3%) registered the greatest decrease.

Annual rates of the Turnover National Index: General and by economic destination of the goods

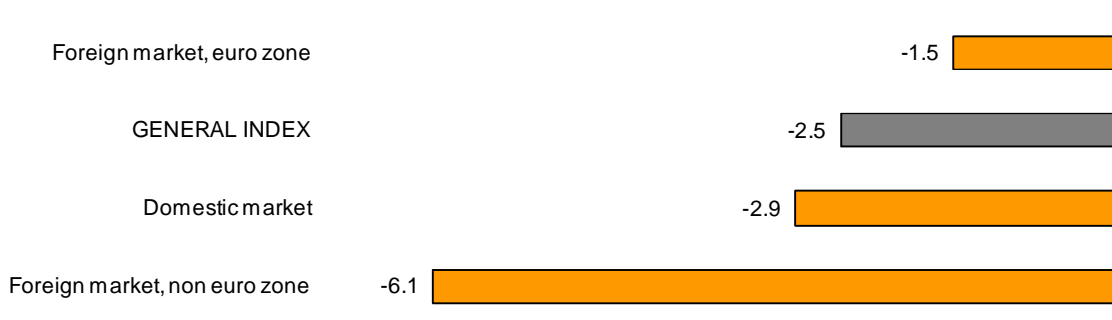
	Original index	Adjusted for seasonal and calendar effects
	Annual rate (%)	Annual rate (%)
GENERAL INDEX	-2.5	-1.1
1. Consumer goods	0.5	0.6
1.1. Durable consumer goods	-6.2	-4.8
1.2. Non-durable consumer goods	1.0	1.8
2. Capital goods	-2.4	-0.5
3. Intermediate goods	-2.6	-1.3
4. Energy*	-10.5	-10.3

* Except supply of electrical energy, gas, steam, air conditioning and water.

Annual evolution of the Industrial Turnover Indices by market. Original series

By geographical destination of sales, all markets registered negative annual rates in January. Worth noting the 6.1% decrease in the non euro zone foreign market.

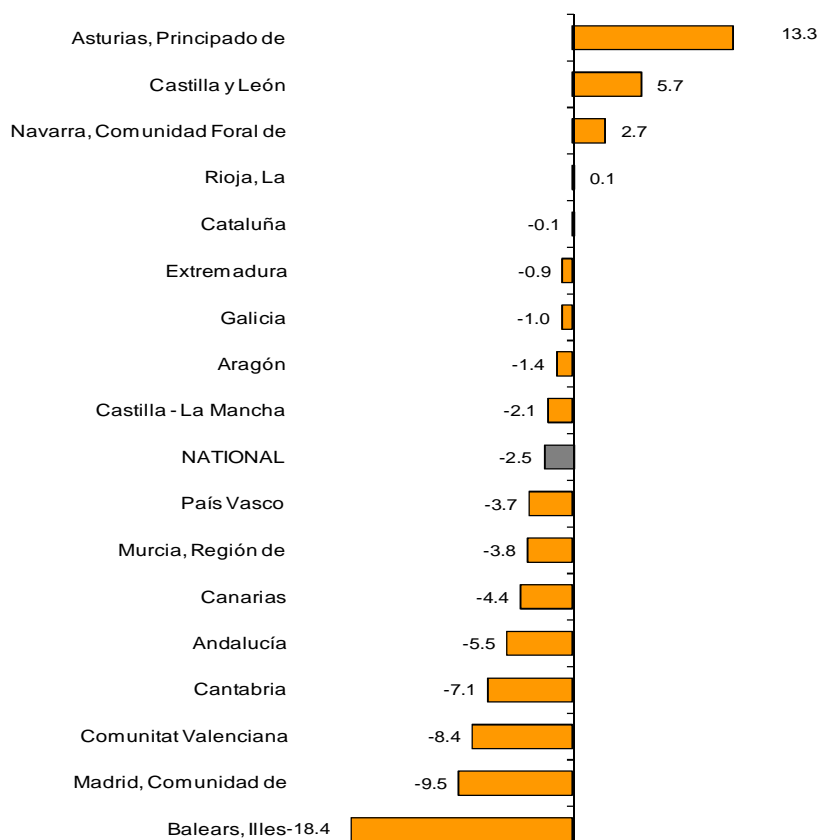
**Industrial Turnover indices: General and by market
Annual rate**



Results by Autonomous Community. Annual variation rates of turnover. Original series

The turnover decreased in thirteen Autonomous Communities, as compared with January 2013, and it increased in the remaining four. The greatest decrease was registered in Illes Balears (-18.4%); in turn, the greatest increase was recorded in Principado de Asturias (13.3%).

**General indices: National and by Autonomous Community
Annual rate of Industry Turnover**



Industrial Turnover Index. Base 2010

January 2014

Provisional data

21 March 2014

1. Turnover indices: General and by economic destination¹ Adjusted for seasonal and calendar effects

	Index	Rate (%)		Year-to-date average
		Monthly	Annual	
GENERAL INDEX	99.4	0.3	-1.1	-1.1
1. Consumer goods	99.1	1.7	0.6	0.6
1.1. Durable consumer goods	67.7	3.6	-4.8	-4.8
1.2. Non-durable consumer goods	103.1	2.4	1.8	1.8
2. Capital goods	91.2	-5.5	-0.5	-0.5
3. Intermediate goods	95.4	1.7	-1.3	-1.3
4. Energy*	136.0	-7.5	-10.3	-10.3

¹ Regulation (EC) no. 656/2007 of the Commission of 14 June 2007.

* Except supply of electrical energy, gas, steam, air conditioning and water.

2. Turnover indices: General and by economic destination¹ Adjusted for calendar effects

	Index	Rate (%)	
		Annual	Year-to-date average
GENERAL INDEX	92.9	-0.9	-0.9
1. Consumer goods	93.9	2.2	2.2
1.1. Durable consumer goods	58.6	-4.1	-4.1
1.2. Non-durable consumer goods	97.5	2.7	2.7
2. Capital goods	79.1	-0.6	-0.6
3. Intermediate goods	93.4	-0.8	-0.8
4. Energy*	128.2	-10.3	-10.3

¹ Regulation (EC) no. 656/2007 of the Commission of 14 June 2007.

* Except supply of electrical energy, gas, steam, air conditioning and water.

3. Turnover indices: General and by activities Originals series

	Index	Rate (%)		Effect Annual
		Annual	Year-to-date average	
GENERAL INDEX	93.5	-2.5	-2.5	
1. CONSUMER GOODS	94.5	0.5	0.5	0.160
1.1. Durable consumer goods	59.0	-6.2	-6.2	-0.116
- Manufacture of consumer electronics, optical instruments and photographic equipment	6.6	8.5	8.5	0.002
- Manufacture of household appliances	77.9	-11.4	-11.4	-0.076
- Manufacture of motorcycles, bicycles, vehicles for the disabled and others	33.9	-15.1	-15.1	-0.012
- Manufacture of furniture	61.8	-1.9	-1.9	-0.019
- Manufacture of jewellery, costume jewellery and musical instruments	82.0	-7.8	-7.8	-0.012
1.2. Non-durable consumer goods	98.1	1.0	1.0	0.276
- Food industries (except grain mill products and food for animals)	103.8	0.8	0.8	0.122
- Manufacture of beverages	78.2	1.0	1.0	0.028
- Manufacture of tobacco	74.3	-9.8	-9.8	-0.019
- Manufacture of knitted fabrics, carpets, rope, non-woven fabrics, textile products for technical use and industrial and other textile products	93.5	-2.2	-2.2	-0.014
- Manufacture of garments	97.6	4.5	4.5	0.057
- Leather and footwear industry	123.9	9.2	9.2	0.093
- Graphic arts and reproduction of recorded media	64.9	-14.0	-14.0	-0.179
- Manufacture of cleaning articles, perfumes and cosmetics	95.3	-5.4	-5.4	-0.081
- Manufacture of pharmaceutical products	110.2	7.7	7.7	0.274
- Manufacture of sporting goods; games and toys and Other manufacturing industries	67.9	-1.5	-1.5	-0.004
2. CAPITAL GOODS	79.6	-2.4	-2.4	-0.478
- Manufacture of metal products for construction, containers made of metal, steam generators, weapons and ammunition	51.8	-12.5	-12.5	-0.227
- Manufacture of computers, peripherals and telecommunications equipment; appliances for measuring and navigation; radiation and medical and therapeutic equipment	66.5	-5.9	-5.9	-0.036
- Manufacture of machinery and equipment n.e.c.	76.6	-2.3	-2.3	-0.071
- Manufacture of motor vehicles, trailers and semi-trailers	95.8	-1.6	-1.6	-0.183
- Naval, railway, aircraft and spacecraft construction. Combat vehicles	51.6	5.2	5.2	0.070
- Manufacture of medical and dental instruments and supplies	88.0	8.8	8.8	0.025
- Repair and installation of machinery and equipment	73.3	-4.5	-4.5	-0.055
3. INTERMEDIATE GOODS	93.9	-2.6	-2.6	-0.962
- Other mining and quarrying	69.1	-12.3	-12.3	-0.084
- Manufacture of grain mill products, starches, and food for animals	119.3	-8.7	-8.7	-0.299
- Preparation and spinning of textile fibres. Manufacture of woven textiles. Textile finishings	92.9	-4.2	-4.2	-0.022
- Wood and cork industry	83.0	5.9	5.9	0.071
- Paper industry	101.8	-4.2	-4.2	-0.128
- Chemical industry except cleaning articles, perfumes and cosmetics	105.7	-5.4	-5.4	-0.402
- Rubber and plastic material transformation industry	94.3	1.9	1.9	0.075
- Manufacture of other non-metallic ore products	66.7	0.3	0.3	0.010
- Metallurgy; manufacture of iron, steel and ferro-alloy products	99.2	0.4	0.4	0.029
- Forging, stamping, embossing and rolling of metals. Manufacture of tools, hardware goods, containers and other metal products	98.7	-1.4	-1.4	-0.061
- Manufacture of electronic components, assembled printed circuits, and magnetic and optical media	38.2	-16.0	-16.0	-0.024
- Manufacture of electrical material and equipment except household appliances	81.4	-4.6	-4.6	-0.125
4. ENERGY*	128.4	-10.5	-10.5	-1.259
- Extraction of anthracite, coal and lignite	62.8	55.8	55.8	..
- Extraction of crude oil, petroleum and natural gas
- Manufacture of coke and refined petroleum products	128.9	-10.8	-10.8	-1.276

* Except supply of electrical energy, gas, steam, air conditioning and water.

(..) Data not available due to statistical secrecy.

4. Turnover indices: General and by branch of activity (CNAE 2009)

Originals series

	Index	Rate (%) Annual	Year-to-date average	Effect Annual
GENERAL INDEX	93.5	-2.5	-2.5	
B. Mining and quarrying industries	74.2	-8.0	-8.0	-0.067
Extraction of anthracite, coal and lignite	62.8	55.8	55.8	..
Extraction of crude oil, petroleum and natural gas
Other mining and quarrying	69.1	-12.3	-12.3	-0.084
C. Manufacturing industry	93.7	-2.5	-2.5	-2.472
Food industry	106.0	-0.9	-0.9	-0.178
Manufacture of beverages	78.2	1.0	1.0	0.028
Manufacture of tobacco	74.3	-9.8	-9.8	-0.019
Textile industry	93.2	-3.1	-3.1	-0.037
Manufacture of garments	97.6	4.5	4.5	0.057
Leather and footwear industry	123.9	9.2	9.2	0.093
Manufacture of wood and of products of wood and cork, except furniture; basketmaking and wickerwork	83.0	5.9	5.9	0.071
Paper industry	101.8	-4.2	-4.2	-0.128
Graphic arts and reproduction of recorded media	64.9	-14.0	-14.0	-0.179
Manufacture of coke and refined petroleum products	128.9	-10.8	-10.8	-1.276
Chemical industry	103.8	-5.4	-5.4	-0.483
Manufacture of pharmaceutical products	110.2	7.7	7.7	0.274
Rubber and plastic material transformation industry	94.3	1.9	1.9	0.075
Manufacture of other non-metallic ore products	66.7	0.3	0.3	0.010
Metallurgy; manufacture of iron, steel and ferro-alloy products	99.2	0.4	0.4	0.029
Manufacture of metal products, except machinery and equipment	79.6	-4.6	-4.6	-0.289
Manufacture of computer, electronic and optical products	47.1	-7.5	-7.5	-0.058
Manufacture of electrical material and equipment	80.8	-6.0	-6.0	-0.202
Manufacture of machinery and equipment n.e.c.	76.6	-2.3	-2.3	-0.071
Manufacture of motor vehicles, trailers and semi-trailers	95.8	-1.6	-1.6	-0.183
Manufacture of other transport material	50.4	4.1	4.1	0.058
Manufacture of furniture	61.8	-1.9	-1.9	-0.019
Other manufacturing industries	78.2	1.4	1.4	0.010
Repair and installation of machinery and equipment	73.3	-4.5	-4.5	-0.055

(..) Data not available due to statistical secrecy.

5. Turnover indices: General and by markets

Originals series

	Index	Rate (%) Annual	Year-to-date Average
GENERAL INDEX	93.5	-2.5	-2.5
1. Domestic market	84.9	-2.9	-2.9
2. Foreign market	106.3	-3.0	-3.0
2.1. Foreign market, euro zone	106.2	-1.5	-1.5
2.2. Foreign market, non euro zone	105.5	-6.1	-6.1

6. General Turnover indices: national and by Autonomous Community

Originals series

	Index	Rate (%)	Year-to-date average
		Annual	
NATIONAL	93.5	-2.5	-2.5
Andalucía	99.7	-5.5	-5.5
Aragón	86.6	-1.4	-1.4
Asturias, Principado de	90.1	13.3	13.3
Balears, Illes	63.6	-18.4	-18.4
Canarias	97.7	-4.4	-4.4
Cantabria	86.8	-7.1	-7.1
Castilla y León	91.6	5.7	5.7
Castilla - La Mancha	98.9	-2.1	-2.1
Cataluña	100.2	-0.1	-0.1
Comunitat Valenciana	96.0	-8.4	-8.4
Extremadura	93.9	-0.9	-0.9
Galicia	93.8	-1.0	-1.0
Madrid, Comunidad de	73.0	-9.5	-9.5
Murcia, Región de	106.7	-3.8	-3.8
Navarra, Comunidad Foral de	90.1	2.7	2.7
País Vasco	87.1	-3.7	-3.7
Rioja, La	88.8	0.1	0.1