

19 April 2013

Industrial Turnover Indices (ITI). Base 2010

February 2013. *Provisional data*

The annual rate of the General Industry Turnover Index stands at –6.9% in the original series and –2.8 in the seasonally adjusted series

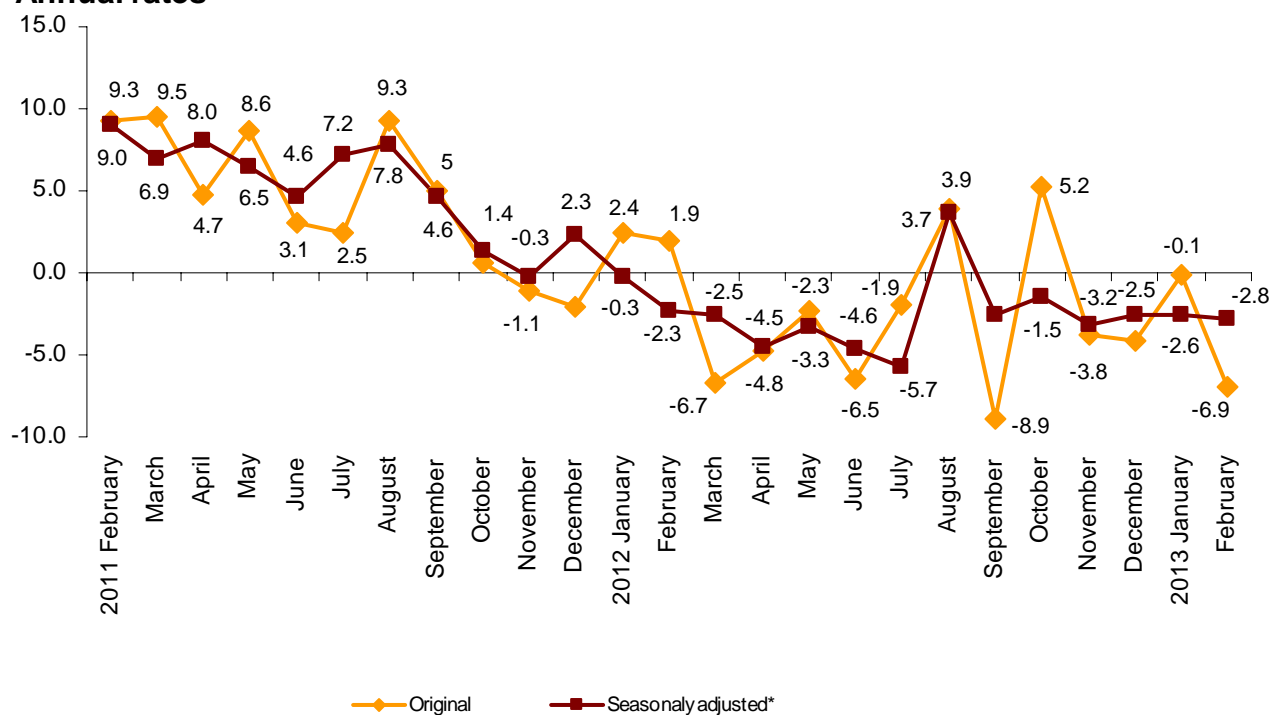
The monthly variation stands at –0.4%, after adjusting the seasonal and calendar effects

In February, the General Industry Turnover Index (ITI) registered a –6.9% variation, as compared with the same month of 2012. This annual rate is almost seven points lower than that of January.

After adjusting the seasonal and calendar effects, the rate was -2.8%, slightly lower than that of January.

Industry Turnover General Index

Annual rates



* Seasonally adjusted: Adjusted for seasonal and calendar effects.

Annual performance of the turnover by economic destination of the goods

All the industrial sectors registered negative annual rates in February.

Durable consumer goods registered the greatest decrease, with an annual variation of – 16.6%. In turn, Non-durable consumer goods registered the slightest decrease, of –4.4%.

After adjusting the seasonal and calendar effect, all sectors showed negative rates, as compared with February of last year, except for Non-durable consumer goods.

National Indices by economy destination

	Original index	% of variation Annual	Seasonally adjusted index	% of variation Annual
GENERAL INDEX	96.8	-6.9	100.7	-2.8
1. CONSUMER GOODS	90.1	-5.3	99.0	-0.8
1.1. Durable consumer goods	63.5	-16.6	67.4	-13.2
1.2. Non-durable consumer goods	92.8	-4.4	102.5	0.5
2. Capital goods	93.3	-8.1	95.5	-1.6
3. Intermediate goods	94.2	-6.7	96.2	-4.4
4. Energy*	145.6	-8.4	158.5	-8.2

In a more detailed analysis, it can be observed the activities with the highest and lowest rates in the month of February.

Activities with the highest annual rates

	Original index	% Annual variation
Manufacture of grain mill products, starches, and food for animals	119.6	4.9
Manufacture of sporting goods; games and toys and Other manufacturing industries	85.1	3.2
Manufacture of beverages	74.4	0.6
Chemical industry except cleaning articles, perfumes and cosmetics	107.9	-1.6
Food industries (except grain mill products and food for animals)	97.5	-2.2

Activities with the lowest annual rates

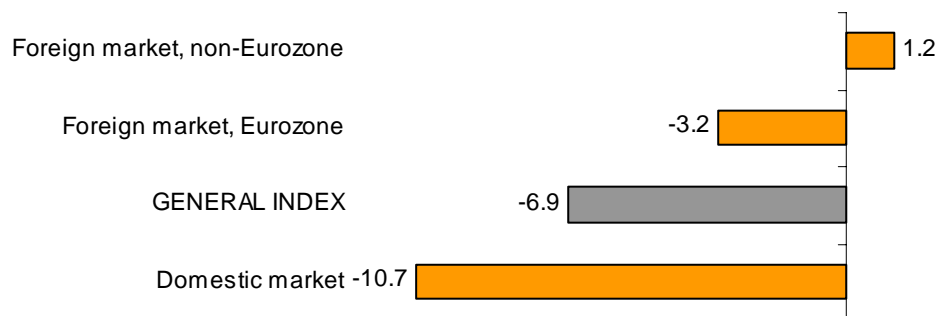
	Original index	% Annual variation
Extraction of anthracite, coal and lignite	45.8	-73.8
Manufacture of consumer electronics, optical instruments and photographic equipment	5.2	-73.0
Manufacture of motorcycles, bicycles, vehicles for the disabled and others	35.7	-37.3
Manufacture of electronic components, assembled printed circuits, and magnetic and optica	40.5	-30.1
Naval, railway, aircraft and spacecraft construction. Combat vehicles	89.4	-24.9

Annual performance of the turnover by market

The indices obtained by market to which the product is invoiced decreased in all cases as compared with the previous year, except for the Foreign market in the non-Eurozone, which increased by 1.2%.

The greatest decrease was registered in the turnover from the Domestic market, with a – 10.7% rate.

Annual rate of ITI General Index and by market

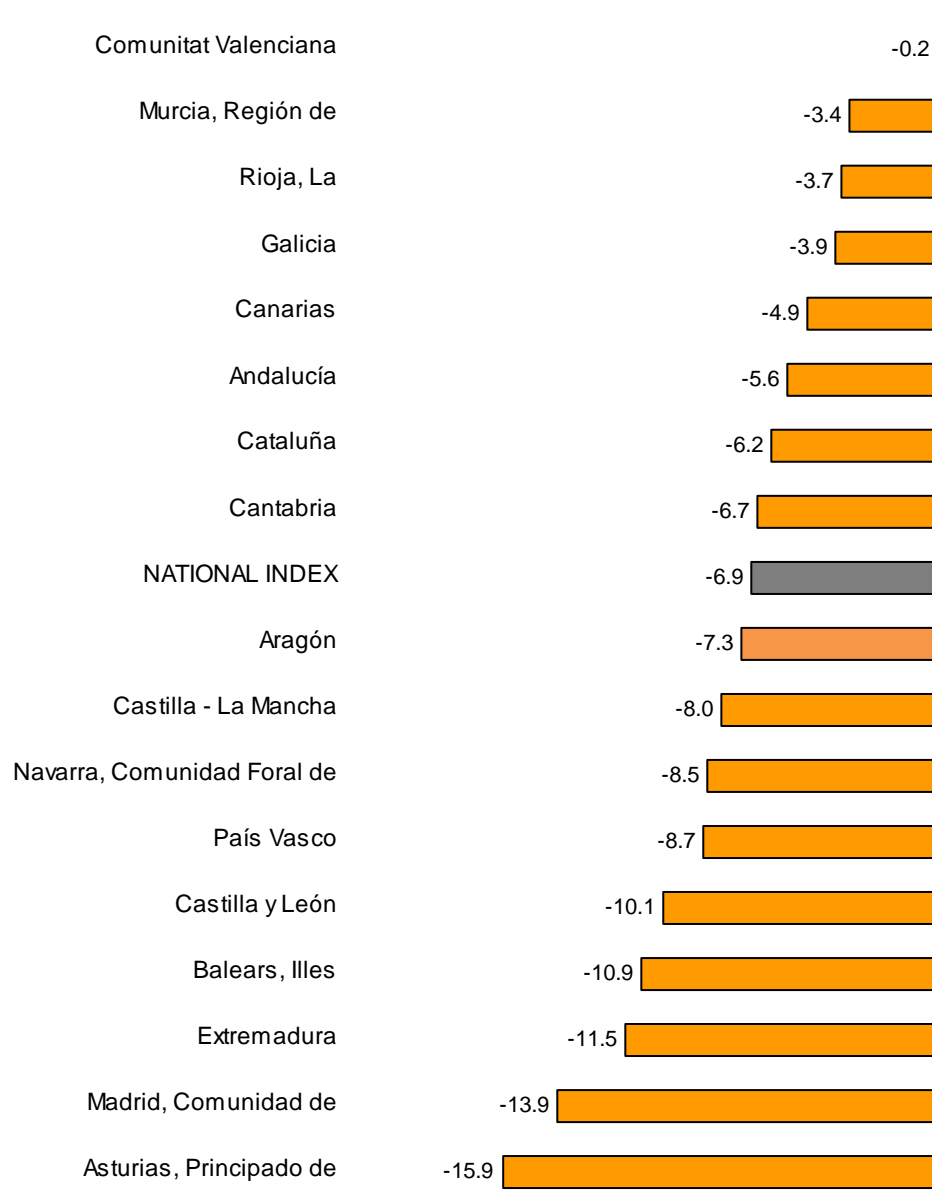


Results by Autonomous Community. Annual variation rates of turnover

All Autonomous Communities decreased their turnover, as compared with February 2012.

The greatest drops were registered in Principado de Asturias (-15.9%) and Comunidad de Madrid (-13.9%). In turn, Comunitat Valenciana registered the slightest decrease (-0.2%).

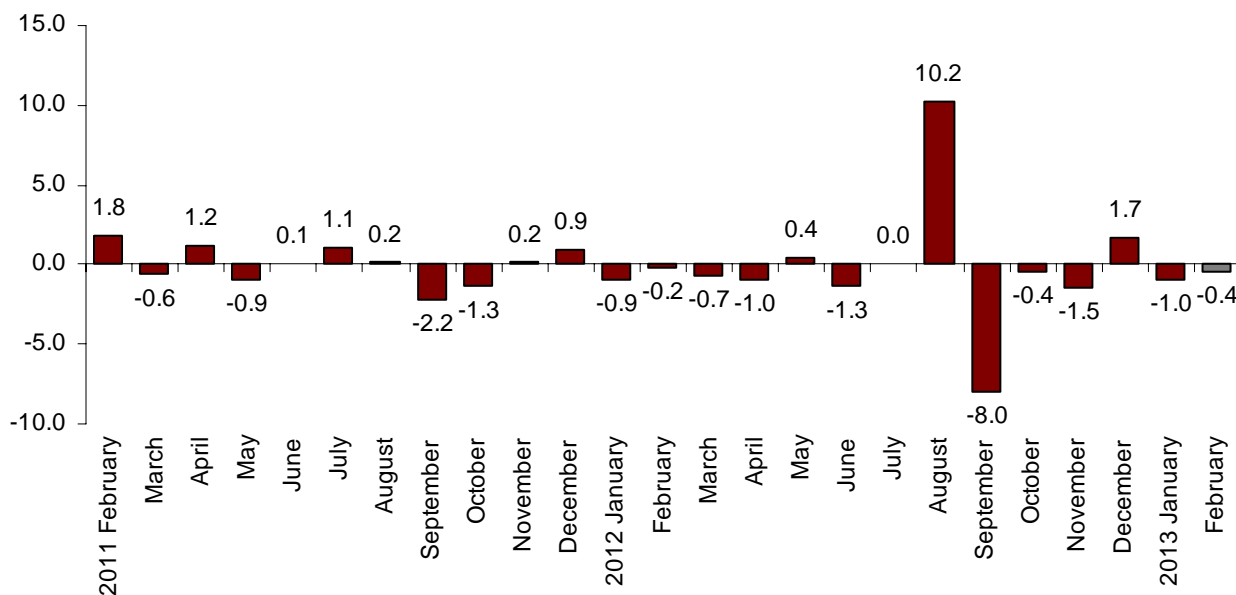
General index by Autonomous Community Annual rate of Industry Turnover



Monthly performance of the ITI, adjusted for seasonal and calendar effects

The monthly variation of the General Industry Turnover Index between February and January was -0.4%, after adjusting the seasonal and calendar effects. This rate was more than half of a point higher than that registered in January.

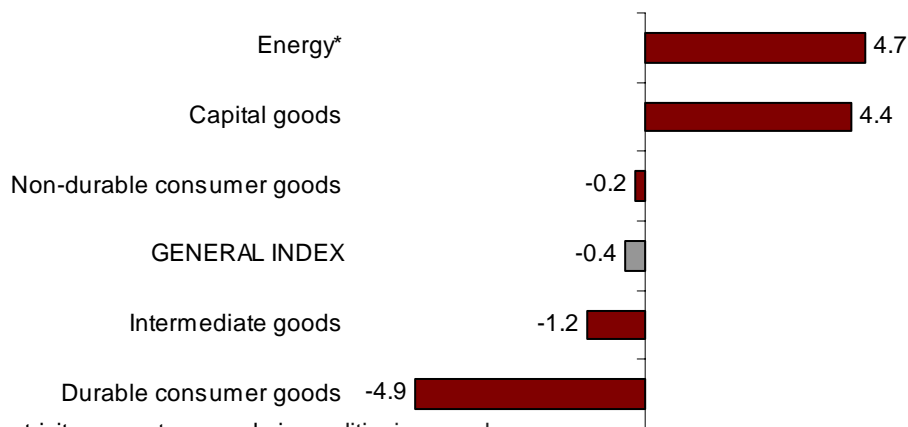
Turnover general index
Adjusted for seasonal and calendar effects. Monthly rate



Monthly performance by destination of the goods

After adjusting the seasonal and calendar effects, the sector showing the greatest positive monthly rate was Energy (4.7%), followed by Capital Goods (4.4%). Conversely, worth noting are the drop Durable Consumer Goods (-4.9%).

ITI monthly rate
General Index and by economic destination
adjusted for seasonal and calendar effects



* Except for Electricity, gas, steam and air conditioning supply

Industrial Turnover Indices. Base 2010

Provisional data

1. Industrial turnover indices by economic destination of the goods¹

	Index	% variation		Effect
		Annual	Monthly	Annual
GENERAL INDEX	96.8	-6.9	0.5	
1. CONSUMER GOODS	90.1	-5.3	-5.0	-1.520
1.1. DURABLE CONSUMER GOODS	63.5	-16.6	1.4	-0.348
- Manufacture of consumer electronics, optical instruments and photographic equipment	5.2	-73.0	-15.1	-0.044
- Manufacture of household appliances	86.0	-7.2	-2.0	-0.047
- Manufacture of motorcycles, bicycles, vehicles for the disabled and others	35.7	-37.3	-11.0	-0.038
- Manufacture of furniture	68.5	-17.3	8.6	-0.204
- Manufacture of jewellery, costume jewellery and musical instruments	64.7	-14.0	-23.6	-0.016
1.2. NON-DURABLE CONSUMER GOODS	92.8	-4.4	-5.4	-1.172
- Food industries (except grain mill products and food for animals)	97.5	-2.2	-6.0	-0.322
- Manufacture of beverages	74.4	0.6	-6.1	0.015
- Manufacture of tobacco	83.8	-3.9	1.6	-0.007
- Manufacture of knitted fabrics, carpets, rope, non-woven fabrics, textile products for technical use and industrial and other textile products	93.8	-4.1	-3.8	-0.026
- Manufacture of garments	86.1	-9.8	-8.4	-0.116
- Leather and footwear industry	122.9	-8.4	6.0	-0.093
- Graphic arts and reproduction of recorded media	70.5	-16.4	-8.9	-0.216
- Manufacture of cleaning articles, perfumes and cosmetics	100.1	-2.4	-0.9	-0.034
- Manufacture of pharmaceutical products	94.1	-11.3	-8.0	-0.383
- Manufacture of sporting goods; games and toys and Other manufacturing industries	85.1	3.2	24.2	0.010
2. CAPITAL GOODS	93.3	-8.1	13.9	-1.864
- Manufacture of metal products for construction, containers made of metal, steam generators, weapons and ammunition	65.8	-9.0	10.4	-0.184
- Manufacture of computers, peripherals and telecommunications equipment; appliances for measuring and navigation; radiation and medical and therapeutic equipment	70.4	-17.2	-0.4	-0.116
- Manufacture of machinery and equipment n.e.c.	87.2	-5.2	8.8	-0.172
- Manufacture of motor vehicles, trailers and semi-trailers	107.5	-2.4	10.6	-0.289
- Naval, railway, aircraft and spacecraft construction. Combat vehicles	89.4	-24.9	82.7	-0.752
- Manufacture of medical and dental instruments and supplies	83.3	-13.6	2.2	-0.043
- Repair and installation of machinery and equipment	76.0	-21.6	-3.0	-0.308
3. INTERMEDIATE GOODS	94.2	-6.7	-2.4	-2.456
- Other mining and quarrying	82.1	-9.5	4.6	-0.068
- Manufacture of grain mill products, starches, and food for animals	119.6	4.9	-8.4	0.135
- Preparation and spinning of textile fibres. Manufacture of woven textiles. Textile finishings	89.8	-8.2	-9.3	-0.040
- Wood and cork industry	81.4	-11.1	3.2	-0.144
- Paper industry	97.8	-4.2	-8.4	-0.113
- Chemical industry except cleaning articles, perfumes and cosmetics	107.9	-1.6	-2.6	-0.110
- Rubber and plastic material transformation industry	90.9	-9.6	-2.2	-0.373
- Manufacture of other non-metallic ore products	67.0	-12.8	-0.1	-0.438
- Metallurgy; manufacture of iron, steel and ferro-alloy products	98.3	-9.5	-0.9	-0.657
- Forging, stamping, embossing and rolling of metals. - Manufacture of tools, hardware goods, containers and other metal products	98.2	-10.4	-2.7	-0.474
- Manufacture of electronic components, assembled printed circuits, and magnetic and optical media	40.5	-30.1	-10.9	-0.054
- Manufacture of electrical material and equipment except household appliances	88.2	-4.5	3.8	-0.120
4. ENERGY (Except supply of electrical energy, gas, steam, air conditioning)	145.6	-8.4	1.5	-1.033
- Extracción de antracita, hulla y lignito	45.8	-73.8	13.7	..
- Extraction of crude oil, petroleum and natural gas
- Manufacture of coke and refined petroleum products	146.7	-7.6	1.5	-0.915

¹ Regulation (EC) no. 656/2007 of the Commission of 14 June 2007.

(..) Data not available due to statistical secrecy.

2. Turnover indices adjusted by calendar effects

	Original index	% of variation		Adjusted index	% of variation	
		Annual	Monthly		Annual	Monthly
GENERAL INDEX	96.8	-6.9	0.5	98.0	-2.9	4.6
1. Consumer goods	90.1	-5.3	-5.0	91.2	-1.0	-1.2
1.1. Durable consumer goods	63.5	-16.6	1.4	64.2	-13.4	6.1
1.2. Non-durable consumer goods	92.8	-4.4	-5.4	94.0	0.3	-1.6
2. Capital goods	93.3	-8.1	13.9	94.9	-1.5	19.3
3. Intermediate goods	94.2	-6.7	-2.4	94.9	-4.5	1.3
4. Energy*	145.6	-8.4	1.5	145.8	-8.2	2.2

*Except supply of electrical energy, gas, steam and air conditioning.

3. Turnover indices seasonally adjusted

	Original index	% of variation		Adjusted index	% of variation	
		Annual	Monthly		Annual	Monthly
GENERAL INDEX	96.8	-6.9	0.5	100.7	-2.8	-0.4
1. Consumer goods	90.1	-5.3	-5.0	99.0	-0.8	-1.6
1.1. Durable consumer goods	63.5	-16.6	1.4	67.4	-13.2	-4.9
1.2. Non-durable consumer goods	92.8	-4.4	-5.4	102.5	0.5	-0.2
2. Capital goods	93.3	-8.1	13.9	95.5	-1.6	4.4
3. Intermediate goods	94.2	-6.7	-2.4	96.2	-4.4	-1.2
4. Energy*	145.6	-8.4	1.5	158.5	-8.2	4.7

*Except supply of electrical energy, gas, steam and air conditioning.

4. Turnover General Index seasonally adjusted

		% of variation		
		Annual ¹	Quarterly ²	Monthly ³
	2009	-21.4		
	2010	5.4		
	2011	5.4		
	2012	-2.4		
	2013	-2.7		
2011	TI	7.7	2.3	
	TII	6.4	0.8	
	TIII	6.5	0.3	
	TIV	1.1	-2.2	
2012	TI	-1.7	-0.6	
	TII	-4.1	-1.7	
	TIII	-1.5	3.1	
	TIV	-2.4	-3.2	
2013	TI	-2.7	-0.6	
2012	FEB	-2.3		-0.2
	MAR	-2.5		-0.7
	APR	-4.5		-1.0
	MAY	-3.3		0.4
	JUN	-4.6		-1.3
	JUL	-5.7		0.0
	AUG	3.7		10.2
	SEP	-2.5		-8.0
	OCT	-1.5		-0.4
	NOV	-3.2		-1.5
	DEC	-2.5		1.7
2013	JAN	-2.6		-1.0
	FEB	-2.8		-0.4

Note:

¹ **Annual rate:** Variation of a period over the same period of the previous year.

² **Quarterly rate:** Variation of a quarter over the previous quarter. In the present quarter it is the variation to date over the previous quarter.

³ **Monthly rate:** Variation of a month over the previous month.

5. Turnover indices by Autonomous Community

	Index	% de variation		
		Annual	Monthly	Average to date
NATIONAL INDEX	96.8	-6.9	0.5	-3.6
Andalucía	100.3	-5.6	-4.7	-2.1
Aragón	94.7	-7.3	8.0	-4.0
Asturias, Principado de	77.4	-15.9	-3.4	-10.9
Balears, Illes	79.9	-10.9	-4.2	-5.7
Canarias	103.4	-4.9	1.0	-5.0
Cantabria	95.0	-6.7	1.1	-4.4
Castilla y León	89.2	-10.1	2.0	-7.4
Castilla - La Mancha	101.6	-8.0	-1.1	-4.1
Cataluña	100.9	-6.2	0.2	-2.8
Comunitat Valenciana	102.7	-0.2	-2.1	4.6
Extremadura	91.2	-11.5	-5.3	-6.9
Galicia	94.4	-3.9	-1.3	-0.3
Madrid, Comunidad de	88.5	-13.9	9.6	-9.1
Murcia, Región de	110.1	-3.4	-0.1	-0.8
Navarra, Comunidad Foral de	88.6	-8.5	1.0	-6.1
País Vasco	94.0	-8.7	3.9	-9.3
Rioja, La	94.1	-3.7	-2.6	1.8

6. National indices by markets

	Index	% de variation		
		Annual	Monthly	Average to date
GENERAL INDEX	96.8	-6.9	0.5	-3.6
1. Domestic market	86.3	-10.7	-1.9	-7.0
2. Foreign market	113.2	-1.2	3.4	1.5
2.1. Foreign market, euro zone	107.7	-3.2	0.1	-0.3
2.2. Foreign market, non euro zone	121.7	1.2	8.3	4.1

7. Industrial Turnover Indices by branch of activity (CNAE 2009)

	Index	% of variation		Effect
		Annual	Monthly	Annual
GENERAL INDEX	96.8	-6.9	0.5	
B. Mining and quarrying industries	83.2	-19.1	3.4	-0.185
Extraction of anthracite, coal and lignite	45.8	-73.8	13.7	..
Extraction of crude oil, petroleum and natural gas
Other mining and quarrying	82.1	-9.5	4.6	-0.068
C. Manufacturing industry	97.0	-6.8	0.5	-6.689
Food industry	100.7	-1.1	-6.4	-0.187
Manufacture of beverages	74.4	0.6	-6.1	0.015
Manufacture of tobacco	83.8	-3.9	1.6	-0.007
Textile industry	92.0	-5.9	-6.2	-0.066
Manufacture of garments	86.1	-9.8	-8.4	-0.116
Leather and footwear industry	122.9	-8.4	6.0	-0.093
Manufacture of wood and of products of wood and cork, except furniture; basketmaking and wickerwork	81.4	-11.1	3.2	-0.144
Paper industry	97.8	-4.2	-8.4	-0.113
Graphic arts and reproduction of recorded media	70.5	-16.4	-8.9	-0.216
Manufacture of coke and refined petroleum products	146.7	-7.6	1.5	-0.915
Chemical industry	106.5	-1.8	-2.3	-0.144
Manufacture of pharmaceutical products	94.1	-11.3	-8.0	-0.383
Rubber and plastic material transformation industry	90.9	-9.6	-2.2	-0.373
Manufacture of other non-metallic ore products	67.0	-12.8	-0.1	-0.438
Metallurgy; manufacture of iron, steel and ferro-alloy products	98.3	-9.5	-0.9	-0.657
Manufacture of metal products, except machinery and equipment	85.0	-10.0	1.1	-0.658
Manufacture of computer, electronic and optical products	49.5	-23.4	-2.8	-0.214
Manufacture of electrical material and equipment	87.8	-5.0	2.7	-0.167
Manufacture of machinery and equipment n.e.c.	87.2	-5.2	8.8	-0.172
Manufacture of motor vehicles, trailers and semi-trailers	107.5	-2.4	10.6	-0.289
Manufacture of other transport material	85.9	-25.3	77.7	-0.790
Manufacture of furniture	68.5	-17.3	8.6	-0.204
Other manufacturing industries	80.7	-6.8	5.6	-0.050
Repair and installation of machinery and equipment	76.0	-21.6	-3.0	-0.308

(..) Data not available due to statistical secrecy.

For further information see **INEbase - www.ine.es/en/** All press releases at: **www.ine.es/en/prensa/prensa_en.htm**

Press Office: Telephone numbers: 91 583 93 63 / 94 08 – Fax: 91 583 90 87 - **gprensa@ine.es**

Information Area: Telephone number: 91 583 91 00 – Fax: 91 583 91 58 – **www.ine.es/infoine**