

**Industrial Turnover Indices (ITI). Base 2010**

April 2014. *Provisional data*

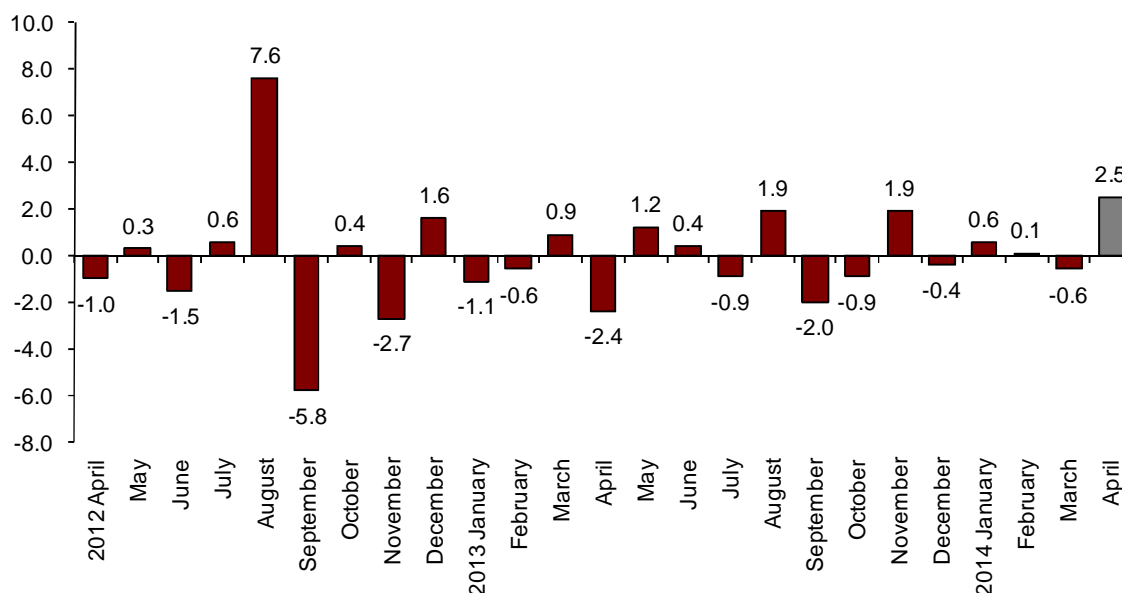
**The monthly variation of the General Industry Turnover Index stands at 2.5%, after adjusting the seasonal and calendar effects**

**The annual rate stands at 3.9% in the seasonally and calendar adjusted series and at -1.3% in the original series**

**Monthly evolution of the Industry Turnover**

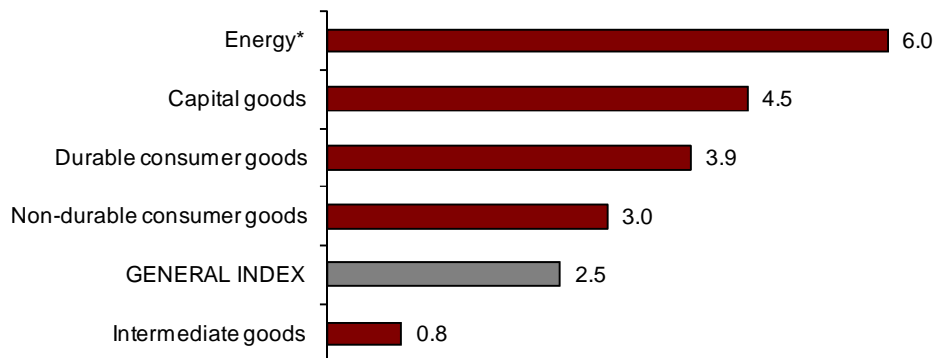
The monthly variation of the General Industry Turnover Index (ITI) between the months of April and March 2014 was 2.5%, after adjusting for the seasonal and calendar effects. This rate was more than three points above that of the previous month.

**Turnover General Index**  
Adjusted for seasonal and calendar effects. Monthly rate



By economic destination of the goods, all sectors registered positive monthly rates. It is worth noting the increase registered in Energy (6.0%).

**Turnover indices: General and by economic destination  
Adjusted for seasonal and calendar effects. Monthly rate**



\*Energy does not include electric power supply, nor gas, steam, air conditioning or water supply

A more detailed analysis showed the branches of activity with the highest and the lowest monthly rates in April.

**Branches of activity with the highest monthly rates of the Industrial Turnover Index,  
Adjusted for seasonal and calendar effects**

Branch of activity (Section of the CNAE 2009)	Monthly rate (%)
Extraction of anthracite, coal and lignite	24.0
Manufacture of machinery and equipment n.e.c.	8.8
Manufacture of beverages	8.1

**Branches of activity with the lowest monthly rates of the Industrial Turnover Index,  
Adjusted for seasonal and calendar effects**

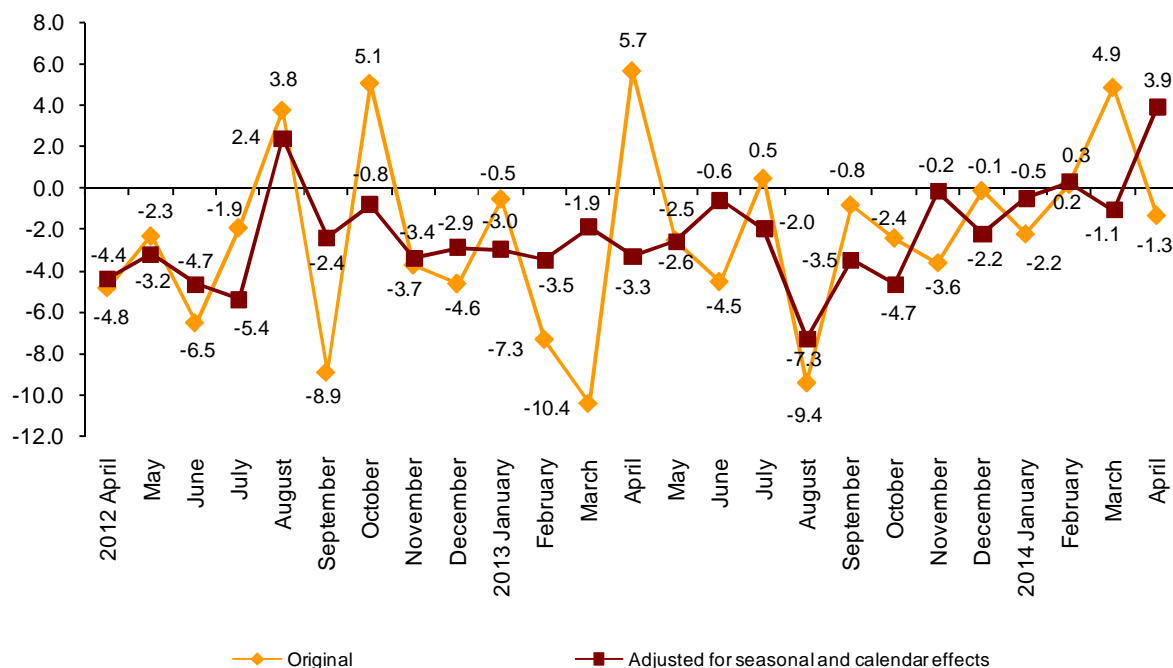
Branch of activity (Section of the CNAE 2009)	Monthly rate (%)
Manufacture of tobacco	-3.4
Manufacture of pharmaceutical products	-1.1
Chemical industry	-0.6

## Annual evolution of the Industrial Turnover indices

The General Industrial Turnover Index (ITI), after adjusting for seasonal and calendar effects, registered a variation of 3.9% in April, as compared with the same month of the previous year. This rate was five points higher than that registered in March 2014.

The original series of the ITI registered an annual variation of -1.3%, that is, more than six points lower than that registered in March 2014.

### General Industrial Turnover Index Annual rates



By economic destination of the goods, all sectors analysed registered positive annual rates, after adjusting for seasonal and calendar effects. It is worth noting the increase registered in Capital goods (12.3%).

### Annual rates of the Turnover National Index: General and by economic destination of the goods

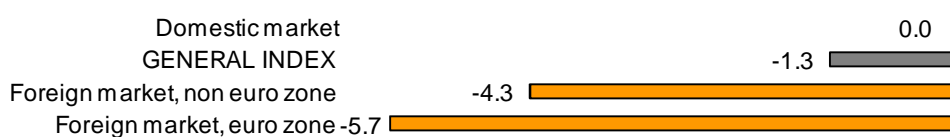
	Original index	Index adjusted for seasonal and calendar effects
	Annual rate (%)	Annual rate (%)
<b>GENERAL INDEX</b>	<b>-1.3</b>	<b>3.9</b>
1. Consumer goods	-0.3	2.9
1.1. Durable consumer goods	-3.9	3.2
1.2. Non-durable consumer goods	-0.1	3.3
2. Capital goods	4.9	12.3
3. Intermediate goods	-6.5	0.5
4. Energy*	1.2	2.5

\* Except supply of electrical energy, gas, steam, air conditioning and water.

**Annual evolution of the Industrial Turnover Indices by market. Original series**

By geographical destination of sales, the foreign market registered negative annual rates in April, both in the euro zone and the non euro zone. In turn, the invoicing in the domestic market remained the same, as compared with April 2013.

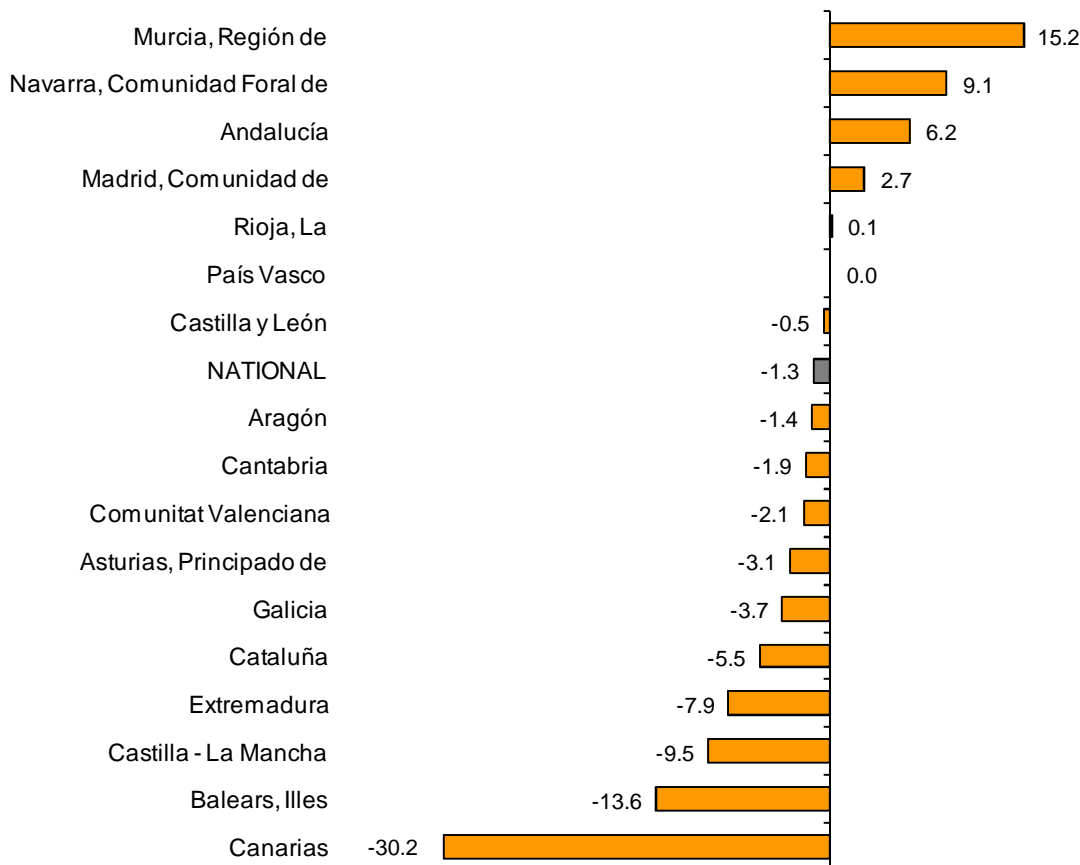
**Industrial turnover indices: General and by market  
Annual rate**



**Results by Autonomous Community. Annual variation rates of the Industrial Turnover. Original series**

The turnover increased in five Autonomous Communities, remained the same in País Vasco and decreased in 11 Autonomous Communities, as compared with April 2013. Worth noting was the decrease registered in Canarias (-30.2%).

**General indices: National and by Autonomous Community  
Annual rate of Industrial Turnover**



## Industrial Turnover Index. Base 2010

April 2014

Provisional data

### 1. Turnover indices<sup>1</sup>

#### Adjusted for seasonal and calendar effects

	Index	Rate (%)		
		Monthly	Annual	Year-to-date average
<b>GENERAL INDEX</b>	<b>102.3</b>	<b>2.5</b>	<b>3.9</b>	<b>0.6</b>
1. Consumer goods	99.5	2.5	2.9	0.4
1.1. Durable consumer goods	68.8	3.9	3.2	-2.8
1.2. Non-durable consumer goods	103.0	3.0	3.3	0.8
2. Capital goods	102.8	4.5	12.3	5.4
3. Intermediate goods	94.9	0.8	0.5	-1.2
4. Energy*	149.4	6.0	2.5	-3.3

<sup>1</sup> Regulation (EC) no. 656/2007 of the Commission of 14 June 2007.

\* Except supply of electrical energy, gas, steam, air conditioning and water.

### 2. Turnover indices<sup>1</sup>

#### Adjusted for calendar effects

	Index	Rate (%)	
		Annual	Year-to-date average
<b>GENERAL INDEX</b>	<b>102.2</b>	<b>4.6</b>	<b>0.7</b>
1. Consumer goods	97.8	4.2	0.7
1.1. Durable consumer goods	66.7	3.7	-2.7
1.2. Non-durable consumer goods	100.9	4.0	1.0
2. Capital goods	101.2	12.5	5.5
3. Intermediate goods	96.2	0.7	-1.0
4. Energy*	150.9	2.5	-3.3

<sup>1</sup> Regulation (EC) no. 656/2007 of the Commission of 14 June 2007.

\* Except supply of electrical energy, gas, steam, air conditioning and water.

## 3. Turnover indices: General and by activities Originals series

	Index	Rate (%)		Effect
		Annual	Year-to-date average	Annual
<b>GENERAL INDEX</b>	<b>101.7</b>	<b>-1.3</b>	<b>0.4</b>	
1. CONSUMER GOODS	97.8	-0.3	0.4	-0.092
1.1. Durable consumer goods	66.2	-3.9	-2.9	-0.074
- Manufacture of consumer electronics, optical instruments and photographic equipment	7.8	-7.8	5.6	-0.002
- Manufacture of household appliances	72.2	-12.3	-11.0	-0.072
- Manufacture of motorcycles, bicycles, vehicles for the disabled and others	27.0	-26.3	-11.5	-0.017
- Manufacture of furniture	79.0	2.5	2.4	0.027
- Manufacture of jewellery, costume jewellery and musical instruments	84.4	-7.5	-2.0	-0.011
1.2. Non-durable consumer goods	101.0	-0.1	0.7	-0.018
- Food industries (except grain mill products and food for animals)	109.1	1.2	1.7	0.195
- Manufacture of beverages	107.8	9.7	3.5	0.320
- Manufacture of tobacco	73.5	-4.0	-1.8	-0.007
- Manufacture of knitted fabrics, carpets, rope, non-woven fabrics, textile products for technical use and industrial and other textile products	98.9	0.5	1.4	0.003
- Manufacture of garments	84.9	4.2	2.3	0.043
- Leather and footwear industry	96.0	11.9	12.3	0.085
- Graphic arts and reproduction of recorded media	67.9	-14.4	-11.1	-0.180
- Manufacture of cleaning articles, perfumes and cosmetics	95.0	-10.2	-6.0	-0.151
- Manufacture of pharmaceutical products	87.7	-9.5	-3.5	-0.297
- Manufacture of sporting goods; games and toys and Other manufacturing industries	87.2	-8.7	0.9	-0.031
2. CAPITAL GOODS	100.5	4.9	5.3	1.079
- Manufacture of metal products for construction, containers made of metal, steam generators, weapons and ammunition	62.8	-5.3	-6.4	-0.102
- Manufacture of computers, peripherals and telecommunications equipment; appliances for measuring and navigation; radiation and medical and therapeutic equipment	71.7	-9.4	-5.3	-0.060
- Manufacture of machinery and equipment n.e.c.	101.0	3.5	2.1	0.123
- Manufacture of motor vehicles, trailers and semi-trailers	115.2	4.6	9.1	0.560
- Naval, railway, aircraft and spacecraft construction. Combat vehicles	99.4	29.7	5.9	0.583
- Manufacture of medical and dental instruments and supplies	89.1	0.2	7.0	0.001
- Repair and installation of machinery and equipment	82.7	-2.1	-0.8	-0.026
3. INTERMEDIATE GOODS	95.2	-6.5	-1.3	-2.398
- Other mining and quarrying	72.1	-18.2	-11.1	-0.129
- Manufacture of grain mill products, starches, and food for animals	121.3	-9.2	-6.5	-0.301
- Preparation and spinning of textile fibres. Manufacture of woven textiles. Textile finishings	101.5	-2.3	0.7	-0.012
- Wood and cork industry	87.7	3.5	9.2	0.042
- Paper industry	96.9	-7.8	-3.8	-0.219
- Chemical industry except cleaning articles, perfumes and cosmetics	107.9	-10.8	-4.6	-0.814
- Rubber and plastic material transformation industry	98.8	-1.7	3.4	-0.067
- Manufacture of other non-metallic ore products	75.0	-2.4	3.8	-0.083
- Metallurgy; manufacture of iron, steel and ferro-alloy products	94.5	-7.3	-2.2	-0.476
- Forging, stamping, embossing and rolling of metals. - Manufacture of tools, hardware goods, containers and other metal products	99.9	-3.3	2.9	-0.140
- Manufacture of electronic components, assembled printed circuits, and magnetic and optical media	39.3	-10.3	-5.9	-0.014
- Manufacture of electrical material and equipment except household appliances	81.2	-7.2	-3.5	-0.185
4. ENERGY*	150.8	1.2	-3.3	0.137
- Extraction of anthracite, coal and lignite	77.2	24.5	20.8	..
- Extraction of crude oil, petroleum and natural gas	..	..	..	..
- Manufacture of coke and refined petroleum products	151.5	1.1	-3.4	0.121

\* Except supply of electrical energy, gas, steam, air conditioning and water.

(..) Data not available due to statistical secrecy.

#### 4. Turnover indices: General and by branch of activity Originals series

	Index	Rate (%)		Effect
		Annual	Year-to-date average	Annual
<b>GENERAL INDEX</b>	<b>101.7</b>	<b>-1.3</b>	<b>0.4</b>	
<b>B. Mining and quarrying industries</b>	<b>78.8</b>	<b>-13.0</b>	<b>-8.8</b>	<b>-0.113</b>
Extraction of anthracite, coal and lignite	77.2	24.5	20.8	..
Extraction of crude oil, petroleum and natural gas	..	..	..	..
Other mining and quarrying	72.1	-18.2	-11.1	-0.129
<b>C. Manufacturing industry</b>	<b>101.9</b>	<b>-1.2</b>	<b>0.5</b>	<b>-1.162</b>
Food industry	110.8	-0.6	0.3	-0.105
Manufacture of beverages	107.8	9.7	3.5	0.320
Manufacture of tobacco	73.5	-4.0	-1.8	-0.007
Textile industry	100.0	1.1	-0.7	-0.008
Manufacture of garments	84.9	4.2	2.3	0.043
Leather and footwear industry	96.0	11.9	12.3	0.085
Manufacture of wood and of products of wood and cork, except furniture; basketmaking and wickerwork	87.7	3.5	9.2	0.042
Paper industry	96.9	-7.8	-3.8	-0.219
Graphic arts and reproduction of recorded media	67.9	-14.4	-11.1	-0.180
Manufacture of coke and refined petroleum products	151.5	1.1	-3.4	0.121
Chemical industry	105.5	-10.7	-4.8	-0.965
Manufacture of pharmaceutical products	87.7	-9.5	-3.5	-0.297
Rubber and plastic material transformation industry	98.8	-1.7	3.4	-0.067
Manufacture of other non-metallic ore products	75.0	-2.4	3.8	-0.083
Metallurgy; manufacture of iron, steel and ferro-alloy products	94.5	-7.3	-2.2	-0.476
Manufacture of metal products, except machinery and equipment	84.8	-3.9	0.1	-0.242
Manufacture of computer, electronic and optical products	50.5	-9.5	-5.1	-0.076
Manufacture of electrical material and equipment	79.5	-8.1	-4.9	-0.257
Manufacture of machinery and equipment n.e.c.	101.0	3.5	2.1	0.123
Manufacture of motor vehicles, trailers and semi-trailers	115.2	4.6	9.1	0.560
Manufacture of other transport material	94.7	27.9	5.4	0.566
Manufacture of furniture	79.0	2.5	2.4	0.027
Other manufacturing industries	87.4	-5.2	2.8	-0.041
Repair and installation of machinery and equipment	82.7	-2.1	-0.8	-0.026

(..) Data not available due to statistical secrecy.

#### 5. Turnover indices: General and by markets Originals series

	Index	Rate (%)	
		Annual	Year-to-date average
<b>GENERAL INDEX</b>	<b>101.7</b>	<b>-1.3</b>	<b>0.4</b>
1. Domestic market	91.3	0.0	0.0
2. Foreign market	116.4	-5.3	-0.9
2.1. Foreign market, euro zone	109.5	-5.7	0.5
2.2. Foreign market, non euro zone	127.7	-4.3	-3.0

## 6. Turnover indices: National and by Autonomous Community

### Originals series

	Index	Rate (%)	
		Annual	Year-to-date average
<b>NATIONAL</b>	<b>101.7</b>	<b>-1.3</b>	<b>0.4</b>
Andalucía	116.8	6.2	5.1
Aragón	93.0	-1.4	0.9
Asturias, Principado de	84.9	-3.1	3.8
Balears, Illes	69.1	-13.6	-13.7
Canarias	77.1	-30.2	-29.3
Cantabria	99.1	-1.9	-1.5
Castilla y León	96.6	-0.5	3.4
Castilla - La Mancha	100.7	-9.5	-5.7
Cataluña	102.5	-5.5	-1.0
Comunitat Valenciana	112.3	-2.1	-0.1
Extremadura	92.2	-7.9	0.6
Galicia	96.7	-3.7	-2.8
Madrid, Comunidad de	90.0	2.7	-2.9
Murcia, Región de	134.8	15.2	16.5
Navarra, Comunidad Foral de	94.9	9.1	7.4
País Vasco	96.1	0.0	-0.2
Rioja, La	91.7	0.1	0.9

For further information see **INEbase** - [www.ine.es/en/](http://www.ine.es/en/) All press releases at: [www.ine.es/en/prensa/prensa\\_en.htm](http://www.ine.es/en/prensa/prensa_en.htm)

**Press Office:** Telephone numbers: 91 583 93 63 / 94 08 – Fax: 91 583 90 87 - [gprensa@ine.es](mailto:gprensa@ine.es)

**Information Area:** Telephone number: 91 583 91 00 – Fax: 91 583 91 58 – [www.ine.es/infoine](http://www.ine.es/infoine)