

20 June 2019

Industrial Turnover Indices (ITI). Base 2015

April 2019. Provisional data

The monthly variation of the Total Industrial Turnover Index¹ stands at 0.9%, after seasonal and calendar adjustment

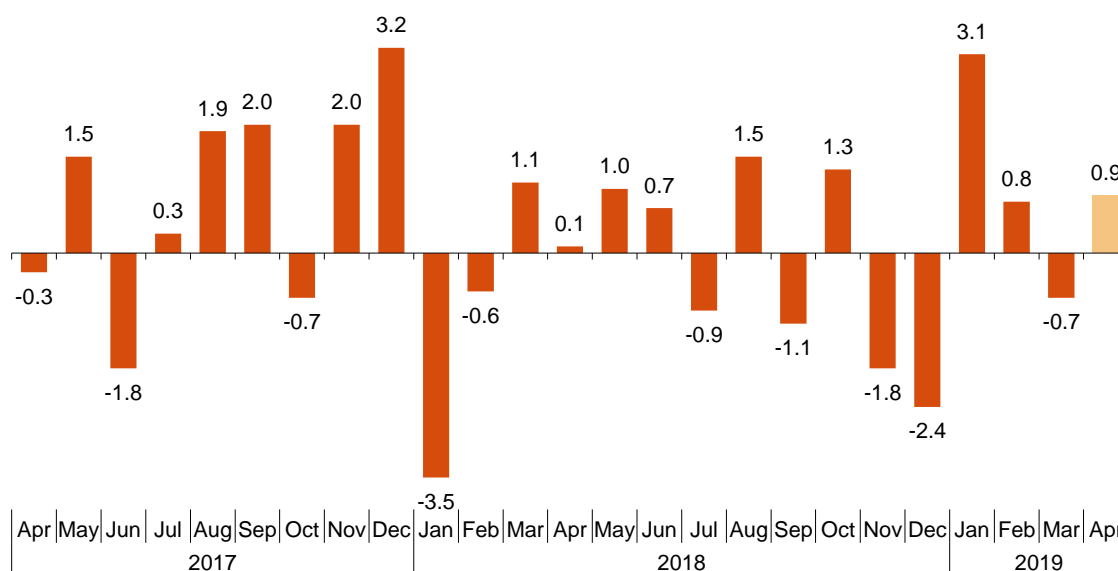
The annual rate stands at 2.3% in the seasonal and calendar adjusted series and at -0.7% in the original series

Monthly trend of the Industrial Turnover

The monthly variation of the seasonally and calendar adjusted Total Industrial Turnover Index between the months of April and March, stood at 0.9%. This rate was 1.6 points higher than the previous month.

Industrial Turnover Index, Total. Seasonally and calendar adjusted

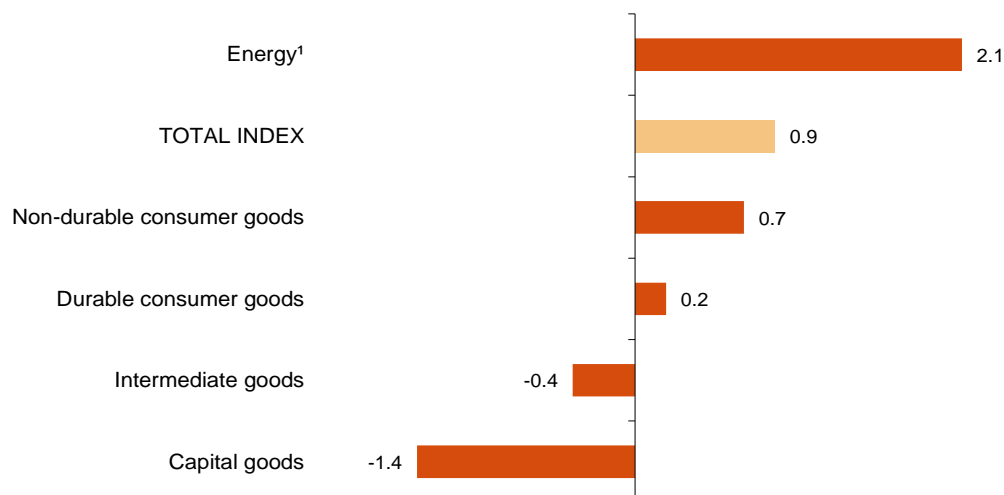
Monthly rate. Percentage



¹ As indicated in the methodology of this value index, the information is presented in current terms (nominal terms), this is, without adjusting the price variation effects.

By Main Industrial Groupings (MIGs), *Energy*² (2.1%), *Non-durable consumer goods* (0.7%) and *Durable consumer goods* (0.2%) showed positive monthly rates. On the other hand *Capital goods* (-1.4%) and *Intermediate goods* (-0.4%) showed negative monthly rates.

Industrial Turnover Indices, Total and by MIGs. Seasonally and calendar adjusted. April 2019. Monthly rate. Percentage



¹ Except electricity, gas, steam, air conditioning and water supply.

A more detailed analysis showed the branches of activity with the highest and the lowest monthly rates in the month of April.

Branches of activity with the highest monthly rates of the Industrial Turnover Index. Seasonally and calendar adjusted

Branch of activity (Division of the CNAE 2009)	Monthly rate (%)
Manufacture of computer, electronic and optical products	4.5
Manufacture of tobacco	4.4
Leather and footwear industry	2.3

Branches of activity with the lowest monthly rates of the Industrial Turnover Index. Seasonally and calendar adjusted

Branch of activity (Division of the CNAE 2009)	Monthly rate (%)
Manufacture of other transport material	-7.4
Manufacture of garments	-3.1
Metallurgy; manufacture of iron, steel and ferro-alloy products	-2.3

² Except electricity, gas, steam, air conditioning and water supply.

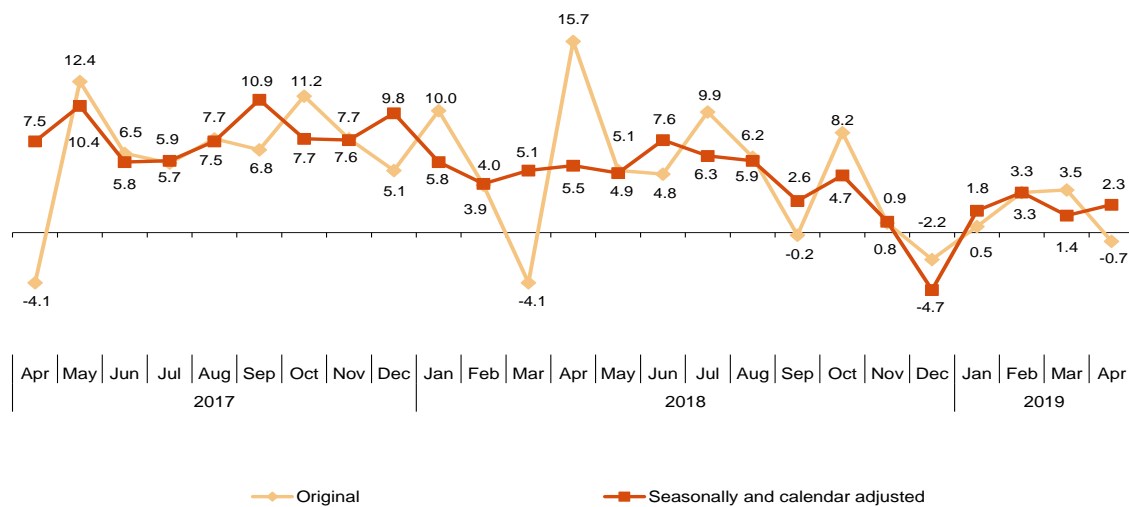
Annual trend of the Industrial Turnover Indices

The Total Industrial Turnover Index, once adjusted for seasonal and calendar effects, showed a variation of 2.3% in April, as compared with the same month of the previous year. This rate was almost one point higher than the one registered in March.

The ITI original series registered an annual variation of -0.7%. This rate was 4.2 points lower than the one in March.

Industrial Turnover Index, Total. Seasonally and calendar adjusted

Annual rates. Percentage



By MIGs, the seasonally and calendar adjusted indices registered positive annual rates in four of five of the analysed sectors, highlighting the increase in *Intermediate goods* (2.8%).

Industrial Turnover Index, Total and by MIGs. Annual rates

	Unadjusted index	Seasonally and calendar adjusted index
	Annual rate (%)	Annual rate (%)
TOTAL INDEX	-0.7	2.3
1. Consumer goods	2.8	2.6
1.1. Durable consumer goods	-2.7	0.8
1.2. Non-durable consumer goods	3.1	2.3
2. Capital goods	-5.7	-2.0
3. Intermediate goods	0.2	2.8
4. Energy ¹	-0.4	0.2

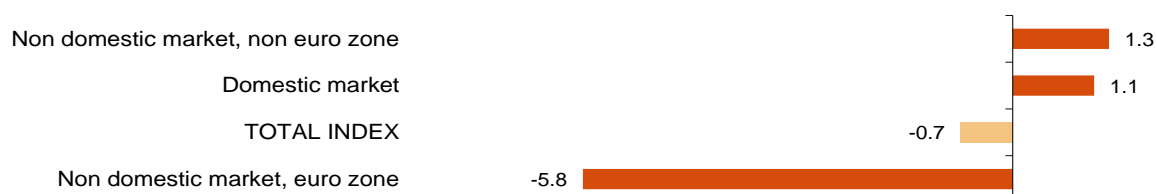
¹ Except electricity, gas, steam, air conditioning and water supply.

Annual trend of the Industrial Turnover Indices by market. Original series

In April positive annual rates were observed in two of the analysed markets. It is worth noting the decrease registered in the euro area in the non-domestic market (-5.8%).

Industrial Turnover Index, Total and by market

April 2019. Annual rate. Percentage

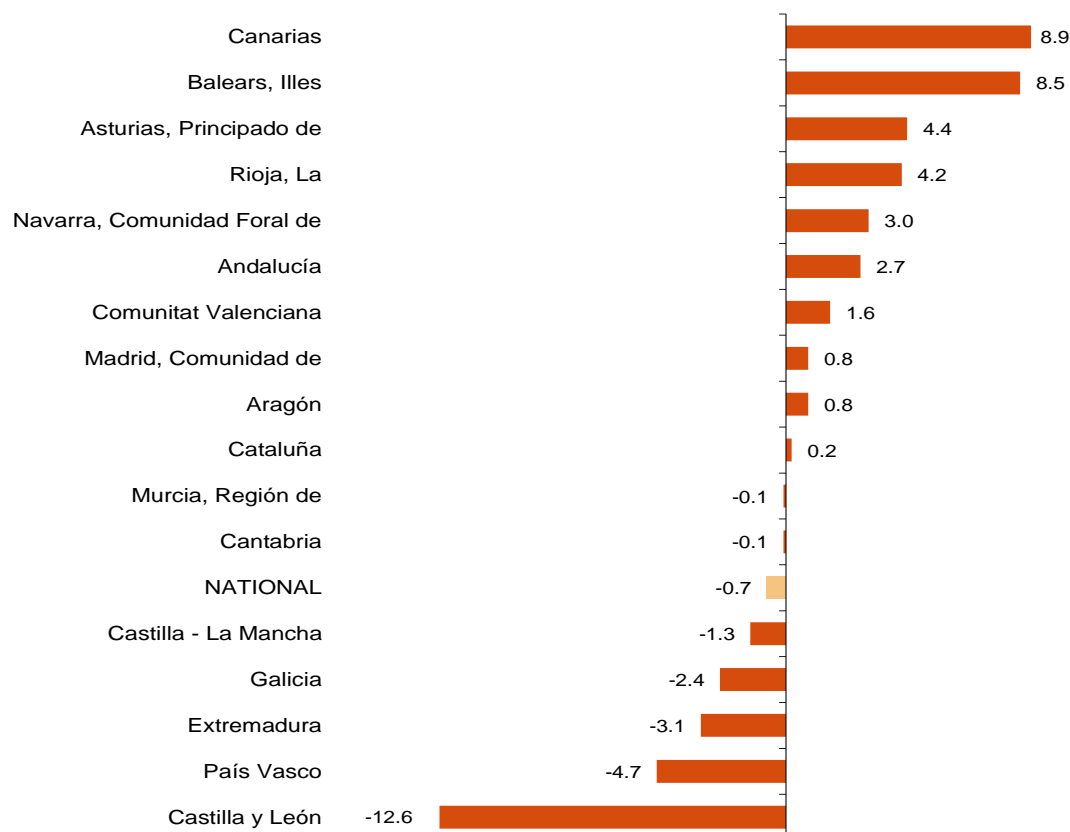


Results by Autonomous Community. Annual rates of the Industrial Turnover. Original series

Turnover increased as compared to April 2018 in 10 Autonomous Communities and decreased in the other seven. The largest decreases were recorded in Castilla y León (-12.6%), País Vasco (-4.7%) and Extremadura (-3.1%). The largest increases were recorded in Canarias (8.9%), Illes Balears (8.5%) and Principado de Asturias (4.4%).

Industrial Turnover Index, Total and by Autonomous Community

April 2019. Annual rate. Percentage



Revisions and data update

On the press release day, INE has updated ITI data series corresponding to the last 13 months. In the case of calendar adjusted and seasonally and calendar adjusted series, according to INE standard, series are revised since its beginning. Results are available at INEBase.

Methodological note

Industrial Turnover Indices (ITI) are short-term indicators aiming at measuring the monthly evolution of the industrial sector, excluding the construction.

The required information is collected since January 2002, together with the Industrial New Orders Received Indices (INORI) through a survey addressed to more than 12.000 industrial establishments throughout the country.

Survey Type: ongoing monthly.

Base year: 2015.

Population scope: units of economic activity whose main activity is included in Sections B: Extractive industries (with the exception, due to their not being relevant to Spanish industry, of division 09) or C: Manufacturing industry of CNAE-2009.

Geographical scope: the whole country, excluding Ceuta and Melilla.

Sample size: Approx. 12,000 establishments.

Data collection: monthly, value of total business turnover broken down by market.

Collection method: fill in a questionnaire by the respondent using one of the following methods: internet (IRIA system), email, fax, telephone or post.

Further information is available in the methodology:

http://www.ine.es/dyngs/INEbase/en/operacion.htm?c=Estadistica_C&cid=1254736148782&menu=metodologia&idp=1254735576715

And in the standardised methodological report:

<http://www.ine.es/dynt3/metadatos/en/RespuestaDatos.html?oe=30052>

For further information see **INEbase:** www.ine.es/en/ Twitter: [@es_ine](https://twitter.com/es_ine)

All press releases at: www.ine.es/en/prensa/prensa_en.htm

Press office: Telephone numbers: (+34) 91 583 93 63 /94 08 – gprensa@ine.es

Information Area: Telephone number: (+34) 91 583 91 00 – www.ine.es/infoine/?L=1

Industrial Turnover Index. Base 2015

April 2019

Provisional data

1. Turnover indices¹

Seasonally and calendar adjusted

	Index	Rate (%)		
		Monthly	Annual	Year-to-date average
TOTAL INDEX	115.4	0.9	2.3	2.2
1. Consumer goods	111.0	0.5	2.6	2.1
1.1. Durable consumer goods	106.8	0.2	0.8	1.3
1.2. Non-durable consumer goods	111.0	0.7	2.3	1.9
2. Capital goods	111.1	-1.4	-2.0	-0.6
3. Intermediate goods	116.9	-0.4	2.8	3.4
4. Energy ²	132.3	2.1	0.2	3.3

¹ Regulation (EC) no. 656/2007 of the Commission of 14 June 2007.

² Except electricity, gas, steam, air conditioning and water supply.

2. Turnover indices¹

Calendar adjusted

	Index	Rate (%)	
		Annual	Year-to-date average
TOTAL INDEX	113.9	2.3	2.2
1. Consumer goods	109.0	4.0	2.8
1.1. Durable consumer goods	102.0	0.6	1.4
1.2. Non-durable consumer goods	109.1	3.4	2.9
2. Capital goods	108.8	-2.1	-0.6
3. Intermediate goods	116.8	2.7	3.4
4. Energy ²	133.3	0.2	3.4

¹ Regulation (EC) no. 656/2007 of the Commission of 14 June 2007.

² Except electricity, gas, steam, air conditioning and water supply.

3. Turnover indices, Total and by activities Unadjusted

	Index	Rate (%)		Effect
		Annual	Year-to-date average	Annual
TOTAL INDEX	113.5	-0.7	1.6	
1. CONSUMER GOODS	109.3	2.8	2.3	0.793
1.1. Durable consumer goods	101.5	-2.7	0.7	-0.046
- Manufacture of consumer electronics, optical instruments and photographic equipment	108.9	9.3	6.3	0.004
- Manufacture of household appliances	72.8	-9.5	-5.7	-0.038
- Manufacture of motorcycles, bicycles, vehicles for the disabled and others	155.8	27.6	19.4	0.020
- Manufacture of furniture	114.5	-2.4	2.7	-0.025
- Manufacture of jewellery, costume jewellery and musical instruments	93.7	-5.1	-7.0	-0.006
1.2. Non-durable consumer goods	109.8	3.1	2.4	0.839
- Food industries (except grain mill products and food for animals)	111.4	4.0	2.4	0.635
- Manufacture of beverages	105.8	4.3	5.0	0.132
- Manufacture of tobacco	58.3	17.9	16.5	0.009
- Manufacture of knitted fabrics, carpets, rope, non-woven fabrics, textile products for technical use and industrial and other textile products	112.7	-0.1	-0.9	-0.001
- Manufacture of garments	103.4	-0.9	-4.0	-0.008
- Leather and footwear industry	98.7	-0.3	-2.5	-0.003
- Graphic arts and reproduction of recorded media	98.6	1.7	0.2	0.018
- Manufacture of cleaning articles, perfumes and cosmetics	125.0	-0.3	3.3	-0.005
- Manufacture of pharmaceutical products	110.0	2.0	4.5	0.055
- Manufacture of sporting goods; games and toys and Other manufacturing industries	105.6	1.6	2.1	0.006
2. CAPITAL GOODS	108.2	-5.7	-1.2	-1.485
- Manufacture of metal products for construction, containers made of metal, steam generators, weapons and ammunition	103.6	9.3	13.4	0.170
- Manufacture of computers, peripherals and telecommunications equipment; appliances for measuring and navigation; radiation and medical and therapeutic equipment	113.4	2.5	3.8	0.013
- Manufacture of machinery and equipment n.e.c.	107.9	-3.2	-0.2	-0.122
- Manufacture of motor vehicles, trailers and semi-trailers	106.5	-12.9	-7.6	-1.950
- Naval, railway, aircraft and spacecraft construction. Combat vehicles	116.4	9.7	17.7	0.235
- Manufacture of medical and dental instruments and supplies	112.0	0.7	2.8	0.002
- Repair and installation of machinery and equipment	113.4	9.4	9.5	0.166
3. INTERMEDIATE GOODS	116.7	0.2	2.8	0.072
- Mining of metal ores
- Other mining and quarrying	112.4	8.9	8.5	.
- Manufacture of grain mill products, starches, and food for animals	113.3	6.0	3.4	0.163
- Preparation and spinning of textile fibres. Manufacture of woven textiles. Textile finishings	101.3	-9.3	-4.6	-0.044
- Wood and cork industry	124.0	-1.2	3.7	-0.018
- Paper industry	115.7	4.0	6.0	0.106
- Chemical industry except cleaning articles, perfumes and cosmetics	110.1	-1.0	1.9	-0.066
- Rubber and plastic material transformation industry	114.9	-2.4	1.0	-0.102
- Manufacture of other non-metallic ore products	125.7	4.0	8.5	0.147
- Metallurgy; manufacture of iron, steel and ferro-alloy products	111.9	-5.8	-2.9	-0.374
- Forging, stamping, embossing and rolling of metals. - Manufacture of tools, hardware goods, containers and other metal products	121.9	0.1	1.5	0.003
- Manufacture of electronic components, assembled printed circuits, and magnetic and optical media	121.8	9.3	8.1	0.021
- Manufacture of electrical material and equipment except household appliances	129.7	6.6	11.9	0.190
4. ENERGY¹	133.3	-0.4	3.2	-0.037
- Extraction of anthracite, coal and lignite
- Extraction of crude oil, petroleum and natural gas
- Manufacture of coke and refined petroleum products	134.2	-0.2	3.4	-0.020

¹ Except electricity, gas, steam, air conditioning and water supply.

(.) Data not available due to statistical confidentiality.

4. Turnover indices, Total and by branch of activity Unadjusted

	Index	Rate (%)		Effect Annual
		Annual	Year-to-date average	
TOTAL INDEX	113.5	-0.7	1.6	
B. Mining and quarrying industries	112.7	4.4	0.6	0.029
Extraction of anthracite, coal and lignite
Extraction of crude oil, petroleum and natural gas
Mining of metal ores
Other mining and quarrying	112.4	8.9	8.5	.
C. Manufacturing industry	113.5	-0.7	1.6	-0.687
Food industry	111.7	4.3	2.5	0.799
Manufacture of beverages	105.8	4.3	5.0	0.132
Manufacture of tobacco	58.3	17.9	16.5	0.009
Textile industry	107.9	-4.0	-2.5	-0.045
Manufacture of garments	103.4	-0.9	-4.0	-0.008
Leather and footwear industry	98.7	-0.3	-2.5	-0.003
Manufacture of wood and of products of wood and cork, except furniture; basketmaking and wickerwork	124.0	-1.2	3.7	-0.018
Paper industry	115.7	4.0	6.0	0.106
Graphic arts and reproduction of recorded media	98.6	1.7	0.2	0.018
Manufacture of coke and refined petroleum products	134.2	-0.2	3.4	-0.020
Chemical industry	112.8	-0.9	2.2	-0.071
Manufacture of pharmaceutical products	110.0	2.0	4.5	0.055
Rubber and plastic material transformation industry	114.9	-2.4	1.0	-0.102
Manufacture of other non-metallic ore products	125.7	4.0	8.5	0.147
Metallurgy; manufacture of iron, steel and ferro-alloy products	111.9	-5.8	-2.9	-0.374
Manufacture of metal products, except machinery and equipment	115.7	2.7	4.9	0.173
Manufacture of computer, electronic and optical products	115.5	4.7	5.2	0.038
Manufacture of electrical material and equipment	119.9	4.7	9.6	0.152
Manufacture of machinery and equipment n.e.c.	107.9	-3.2	-0.2	-0.122
Manufacture of motor vehicles, trailers and semi-trailers	106.5	-12.9	-7.6	-1.950
Manufacture of other transport material	117.4	10.3	17.7	0.254
Manufacture of furniture	114.5	-2.4	2.7	-0.025
Other manufacturing industries	106.2	0.2	1.0	0.002
Repair and installation of machinery and equipment	113.4	9.4	9.5	0.166

(.) Data not available due to statistical confidentiality.

5. Turnover indices, Total and by branch of activity Unadjusted

	Index	Rate (%)	
		Annual	Year-to-date average
GENERAL INDEX	113.5	-0.7	1.6
1. Domestic market	113.8	1.1	2.0
2. Non domestic market	111.7	-3.3	0.7
2.1. Non domestic market, euro area	113.7	-5.8	0.3
2.2. Non domestic market, non euro area	109.5	1.3	1.7

**6. Turnover indices, National and by Autonomous Community
Unadjusted**

	Index	Rate (%)	
		Annual	Year-to-date average
NATIONAL	113.5	-0.7	1.6
Andalucía	115.8	2.7	3.0
Aragón	113.5	0.8	3.2
Asturias, Principado de	123.6	4.4	0.6
Balears, Illes	118.2	8.5	6.4
Canarias	103.5	8.9	5.0
Cantabria	114.3	-0.1	2.1
Castilla y León	99.9	-12.6	-8.5
Castilla - La Mancha	110.3	-1.3	5.4
Cataluña	113.8	0.2	1.5
Comunitat Valenciana	113.3	1.6	-0.2
Extremadura	114.9	-3.1	-0.5
Galicia	121.6	-2.4	3.1
Madrid, Comunidad de	105.9	0.8	4.5
Murcia, Región de	133.7	-0.1	6.2
Navarra, Comunidad Foral de	117.4	3.0	4.8
País Vasco	112.5	-4.7	0.8
Rioja, La	104.7	4.2	5.3