

**Índices de Cifras de Negocios en la Industria (ICN). Base 2010**

Julio 2016. *Datos provisionales*

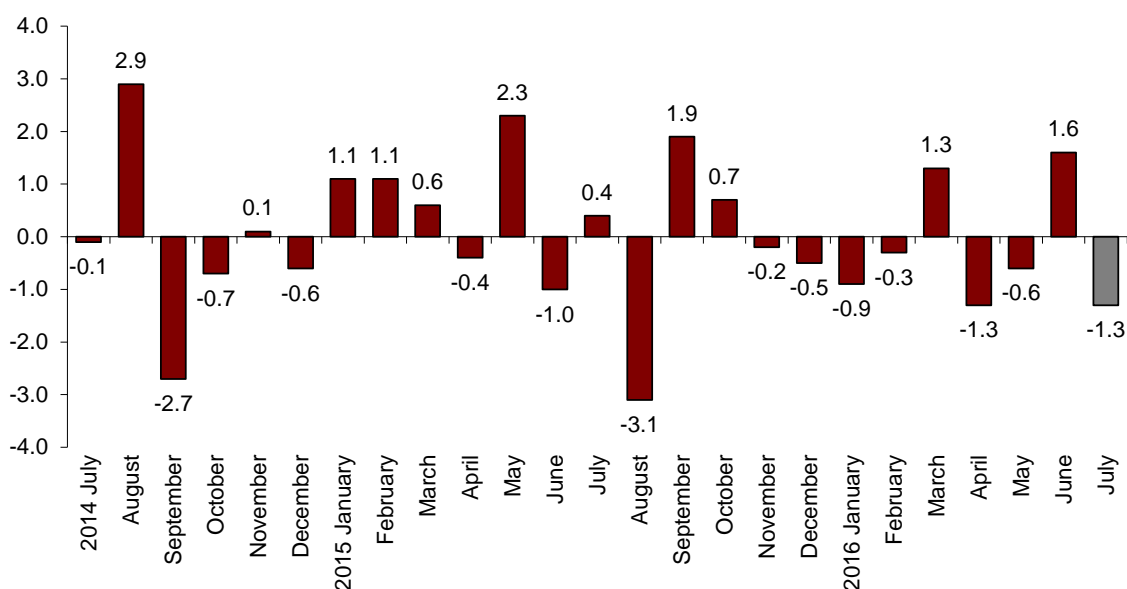
**La variación mensual del Índice General de Cifras de Negocios en la Industria<sup>1</sup> es del -1,3% si se eliminan los efectos estacionales y de calendario**

**La tasa anual se sitúa en el -2,8% en la serie corregida de efectos estacionales y de calendario, y en el -9,3% en la serie original**

**Evolución mensual de la cifra de negocios en la Industria**

La variación mensual del Índice General de Cifra de Negocios de la Industria entre los meses de julio y junio, eliminando los efectos estacionales y de calendario, es del -1,3%. Esta tasa es casi tres puntos inferior a la del mes anterior.

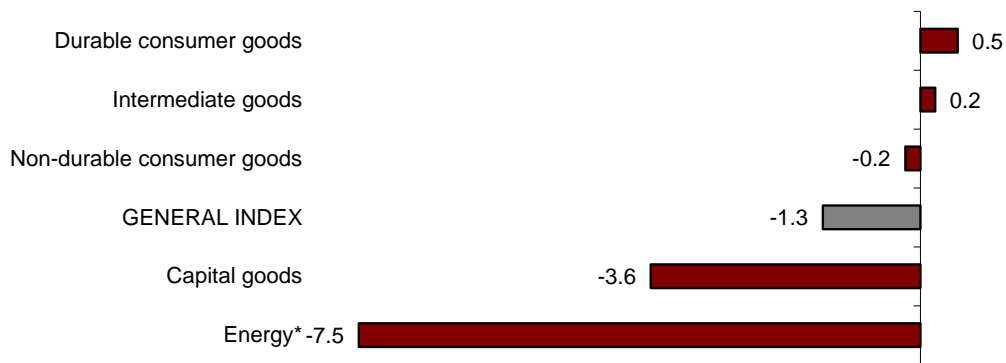
**Turnover General Index**  
**Adjusted for seasonal and calendar effects. Monthly rate**



<sup>1</sup> As explained in the methodology for this value index, the information is presented in current terms (nominal terms), that is, without adjusting the effects in the price variation thereof.

Por destino económico de los bienes, *Bienes de consumo duradero* (0,5%) y *Bienes intermedios* (0,2%) presentan tasas mensuales positivas. *Energía* (-7,5%), *Bienes de equipo* (-3,6%) y *Bienes de consumo no duradero* (-0,2%) registran tasas mensuales negativas.

**Turnover indices: General and by economic destination  
Adjusted for seasonal and calendar effects. Monthly rate**



\* Except supply of electrical energy, gas, steam, air conditioning and water.

En un análisis más detallado, se pueden observar las ramas de actividad con las tasas mensuales mayores y menores en el mes de julio.

**Branches of activity with the highest monthly rates of the Industrial Turnover Index,  
Adjusted for seasonal and calendar effects**

Branch of activity (Section of the CNAE 2009)	Monthly rate (%)
Manufacture of tobacco	49.6
Other mining and quarrying	7.1
Other manufacturing industries	4.6

**Branches of activity with the lowest monthly rates of the Industrial Turnover Index,  
Adjusted for seasonal and calendar effects**

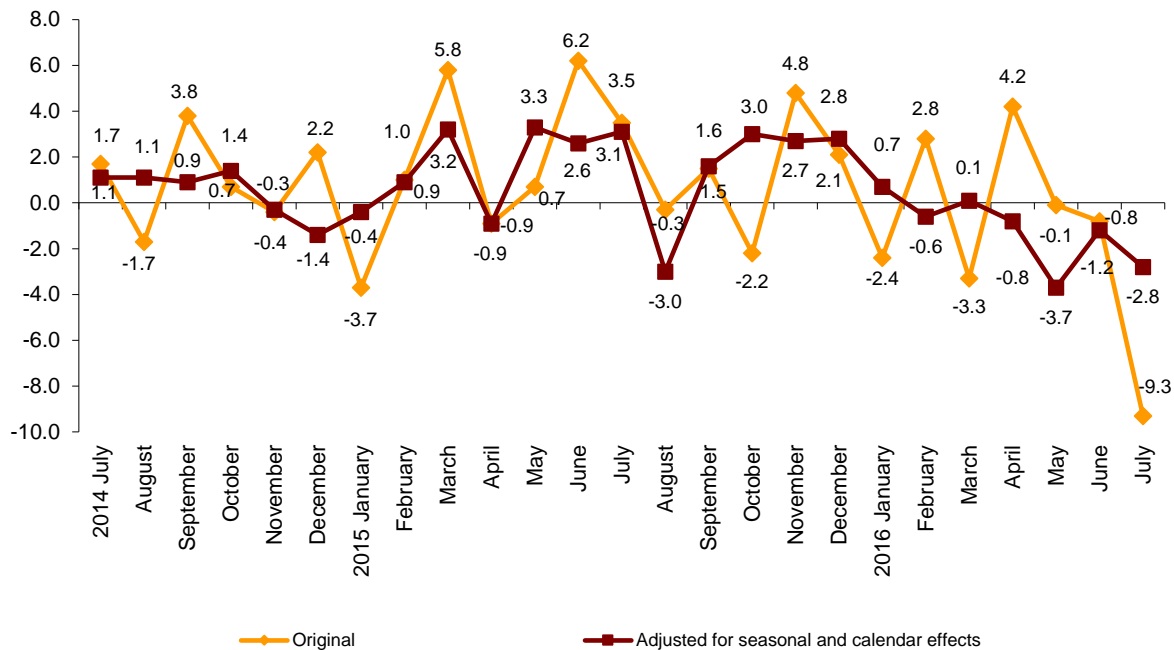
Branch of activity (Section of the CNAE 2009)	Monthly rate (%)
Extraction of anthracite, coal and lignite	-47.5
Manufacture of coke and refined petroleum products	-7.1
Manufacture of other transport material	-6.3

## Evolución anual de los índices de cifras de negocios en la Industria

El Índice General de Cifra de Negocios en la Industria corregido de efectos estacionales y de calendario presenta en julio una variación del  $-2,8\%$  respecto al mismo mes del año anterior. Esta tasa es 1,6 puntos inferior a la de junio.

La serie original del ICN experimenta una variación anual del  $-9,3\%$ . Esta tasa es 8,5 puntos inferior a la de junio.

### General Industrial Turnover Index Annual rates



Por destino económico de los bienes, los índices corregidos de efectos estacionales y de calendario presentan tasas anuales negativas en tres de los cinco sectores analizados. Cabe destacar el descenso de *Energía* ( $-25,3\%$ ).

### Annual rates of the Turnover National Index: General and by economic destination of the goods

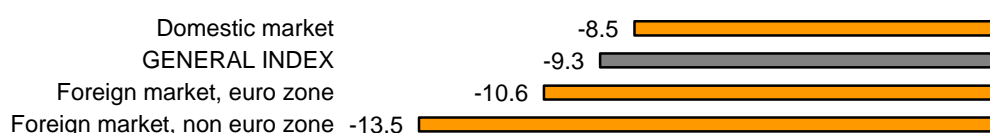
	Original index	Index adjusted for seasonal and calendar effects
	Annual rate (%)	Annual rate (%)
<b>GENERAL INDEX</b>	<b>-9.3</b>	<b>-2.8</b>
1. Consumer goods	-4.5	2.8
1.1. Durable consumer goods	-8.5	0.1
1.2. Non-durable consumer goods	-4.2	2.8
2. Capital goods	-8.9	-1.1
3. Intermediate goods	-9.7	-2.5
4. Energy*	-26.5	-25.3

\* Except supply of electrical energy, gas, steam, air conditioning and water.

**Evolución anual de los índices de cifra de negocios en la Industria por mercado. Serie original**

Por destino geográfico de las ventas, en julio se observa que todos los mercados presentan tasas anuales negativas. Destaca el descenso del -13,5% en la zona no euro del mercado exterior.

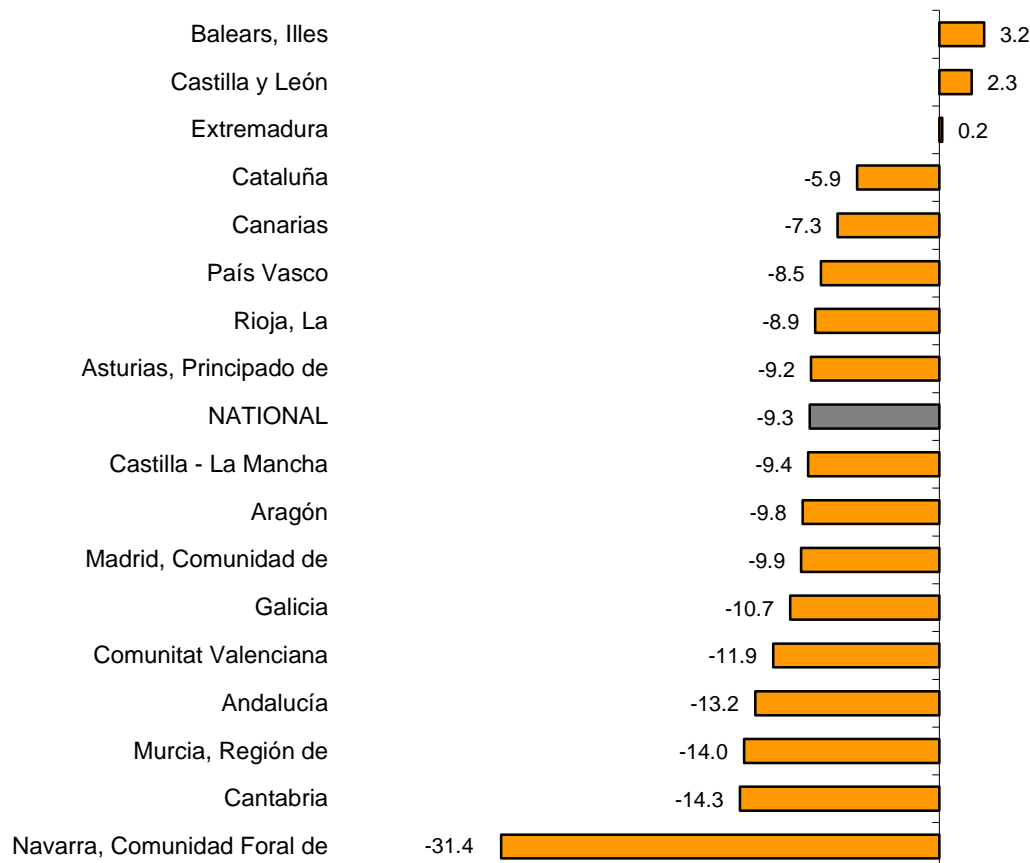
**Industrial turnover indices: General and by market Annual rate**



**Resultados por comunidades autónomas. Tasas de variación anual de la cifra de negocios en la Industria. Serie original**

La cifra de negocios aumenta respecto a julio de 2015 en tres comunidades autónomas y disminuye en las otras 14. El mayor aumento se produce en Illes Balears (3,2%) y el mayor descenso en Comunidad Foral de Navarra (-31,4%).

**General indices: National and by Autonomous Community Annual rate and average rate of Industrial Turnover**



## Industrial Turnover Index. Base 2010

July 2016

Provisional data

### 1. Turnover indices<sup>1</sup>

#### Adjusted for seasonal and calendar effects

	Index	Rate (%)		
		Monthly	Annual	Year-to-date average
<b>GENERAL INDEX</b>	<b>100.3</b>	<b>-1.3</b>	<b>-2.8</b>	<b>-1.2</b>
1. Consumer goods	103.0	0.1	2.8	2.4
1.1. Durable consumer goods	72.4	0.5	0.1	1.4
1.2. Non-durable consumer goods	106.6	-0.2	2.8	2.4
2. Capital goods	111.8	-3.6	-1.1	6.4
3. Intermediate goods	94.2	0.2	-2.5	-3.0
4. Energy*	85.0	-7.5	-25.3	-27.5

<sup>1</sup> Regulation (EC) no. 656/2007 of the Commission of 14 June 2007.

\* Except supply of electrical energy, gas, steam, air conditioning and water.

### 2. Turnover indices<sup>1</sup>

#### Adjusted for calendar effects

	Index	Rate (%)	
		Annual	Year-to-date average
<b>GENERAL INDEX</b>	<b>108.2</b>	<b>-2.8</b>	<b>-1.3</b>
1. Consumer goods	113.4	2.6	2.4
1.1. Durable consumer goods	81.4	0.7	1.4
1.2. Non-durable consumer goods	116.8	3.0	2.5
2. Capital goods	119.4	-1.1	6.2
3. Intermediate goods	101.0	-2.4	-3.1
4. Energy*	91.7	-25.2	-27.4

<sup>1</sup> Regulation (EC) no. 656/2007 of the Commission of 14 June 2007.

\* Except supply of electrical energy, gas, steam, air conditioning and water.

## 3. Turnover indices: General and by activities Originals series

	Index	Rate (%)		Effect Annual
		Annual	Year-to-date average	
<b>GENERAL INDEX</b>	<b>103.8</b>	<b>-9.3</b>	<b>-1.4</b>	
<b>1. CONSUMER GOODS</b>	<b>108.5</b>	<b>-4.5</b>	<b>2.2</b>	<b>-1.390</b>
1.1. Durable consumer goods	76.8	-8.5	1.0	-0.179
- Manufacture of consumer electronics, optical instruments and photographic equipment	10.4	-26.7	-6.6	-0.011
- Manufacture of household appliances	75.5	-17.3	-8.4	-0.100
- Manufacture of motorcycles, bicycles, vehicles for the disabled and others	24.0	-6.7	7.5	-0.003
- Manufacture of furniture	97.5	-3.6	5.8	-0.047
- Manufacture of jewellery, costume jewellery and musical instruments	86.8	-12.5	-2.0	-0.017
1.2. Non-durable consumer goods	111.7	-4.2	2.3	-1.211
- Food industries (except grain mill products and food for animals)	114.7	-3.3	2.1	-0.518
- Manufacture of beverages	127.3	-2.4	4.1	-0.094
- Manufacture of tobacco	29.9	-60.9	-24.8	-0.092
- Manufacture of knitted fabrics, carpets, rope, non-woven fabrics, textile products for technical use and industrial and other textile products	113.0	-4.5	4.6	-0.031
- Manufacture of garments	93.4	-12.0	0.3	-0.144
- Leather and footwear industry	142.9	-10.0	0.6	-0.119
- Graphic arts and reproduction of recorded media	63.9	-6.4	-2.2	-0.062
- Manufacture of cleaning articles, perfumes and cosmetics	116.0	2.6	12.4	0.037
- Manufacture of pharmaceutical products	107.9	-5.8	0.2	-0.192
- Manufacture of sporting goods; games and toys and Other manufacturing industries	112.4	1.2	3.0	0.005
<b>2. CAPITAL GOODS</b>	<b>113.7</b>	<b>-8.9</b>	<b>6.4</b>	<b>-2.285</b>
- Manufacture of metal products for construction, containers made of metal, steam generators, weapons and ammunition	71.0	-9.3	3.7	-0.188
- Manufacture of computers, peripherals and telecommunications equipment; appliances for measuring and navigation; radiation and medical and therapeutic equipment	91.3	4.5	6.2	0.028
- Manufacture of machinery and equipment n.e.c.	110.4	-7.1	4.8	-0.276
- Manufacture of motor vehicles, trailers and semi-trailers	133.8	-9.7	8.8	-1.434
- Naval, railway, aircraft and spacecraft construction. Combat vehicles	99.5	-15.6	-1.3	-0.424
- Manufacture of medical and dental instruments and supplies	123.4	7.9	6.6	0.027
- Repair and installation of machinery and equipment	87.7	-1.5	1.9	-0.018
<b>3. INTERMEDIATE GOODS</b>	<b>96.4</b>	<b>-9.7</b>	<b>-3.5</b>	<b>-3.370</b>
- Other mining and quarrying	74.7	-15.4	-9.4	-0.098
- Manufacture of grain mill products, starches, and food for animals	112.2	-7.5	-1.8	-0.200
- Preparation and spinning of textile fibres. Manufacture of woven textiles. Textile finishings	107.1	-7.3	3.0	-0.039
- Wood and cork industry	91.4	-8.8	3.0	-0.113
- Paper industry	99.8	-5.9	0.2	-0.151
- Chemical industry except cleaning articles, perfumes and cosmetics	98.1	-14.3	-6.6	-0.921
- Rubber and plastic material transformation industry	102.5	-6.8	2.4	-0.262
- Manufacture of other non-metallic ore products	86.2	-2.5	3.2	-0.091
- Metallurgy; manufacture of iron, steel and ferro-alloy products	87.7	-14.8	-15.7	-0.882
- Forging, stamping, embossing and rolling of metals. - Manufacture of tools, hardware goods, containers and other metal products	111.4	-7.5	1.9	-0.341
- Manufacture of electronic components, assembled printed circuits, and magnetic and optical media	35.9	-12.0	-7.6	-0.014
- Manufacture of electrical material and equipment except household appliances	94.7	-9.4	-0.5	-0.259
<b>4. ENERGY*</b>	<b>90.7</b>	<b>-26.5</b>	<b>-27.5</b>	<b>-2.291</b>
- Extraction of anthracite, coal and lignite	14.8	-73.0	-54.3	..
- Extraction of crude oil, petroleum and natural gas	..	..	..	..
- Manufacture of coke and refined petroleum products	92.0	-26.1	-27.2	-2.231

\* Except supply of electrical energy, gas, steam, air conditioning and water.

(..) Data not available due to statistical secrecy.

#### 4. Turnover indices: General and by branch of activity Originals series

	Index	Rate (%)		Effect Annual
		Annual	Year-to-date average	
<b>GENERAL INDEX</b>	<b>103.8</b>	<b>-9.3</b>	<b>-1.4</b>	
<b>B. Mining and quarrying industries</b>	66.5	-21.6	-16.2	-0.157
Extraction of anthracite, coal and lignite	14.8	-73.0	-54.3	..
Extraction of crude oil, petroleum and natural gas	..	..	..	..
Other mining and quarrying	74.7	-15.4	-9.4	-0.098
<b>C. Manufacturing industry</b>	104.1	-9.2	-1.3	-9.177
Food industry	114.3	-3.9	1.5	-0.718
Manufacture of beverages	127.3	-2.4	4.1	-0.094
Manufacture of tobacco	29.9	-60.9	-24.8	-0.092
Textile industry	110.4	-5.7	3.9	-0.070
Manufacture of garments	93.4	-12.0	0.3	-0.144
Leather and footwear industry	142.9	-10.0	0.6	-0.119
Manufacture of wood and of products of wood and cork, except furniture; basketmaking and wickerwork	91.4	-8.8	3.0	-0.113
Paper industry	99.8	-5.9	0.2	-0.151
Graphic arts and reproduction of recorded media	63.9	-6.4	-2.2	-0.062
Manufacture of coke and refined petroleum products	92.0	-26.1	-27.2	-2.231
Chemical industry	101.3	-11.2	-3.3	-0.884
Manufacture of pharmaceutical products	107.9	-5.8	0.2	-0.192
Rubber and plastic material transformation industry	102.5	-6.8	2.4	-0.262
Manufacture of other non-metallic ore products	86.2	-2.5	3.2	-0.091
Metallurgy; manufacture of iron, steel and ferro-alloy products	87.7	-14.8	-15.7	-0.882
Manufacture of metal products, except machinery and equipment	94.9	-8.1	2.4	-0.529
Manufacture of computer, electronic and optical products	61.4	0.5	3.5	0.004
Manufacture of electrical material and equipment	91.0	-10.7	-1.9	-0.359
Manufacture of machinery and equipment n.e.c.	110.4	-7.1	4.8	-0.276
Manufacture of motor vehicles, trailers and semi-trailers	133.8	-9.7	8.8	-1.434
Manufacture of other transport material	94.5	-15.5	-1.2	-0.427
Manufacture of furniture	97.5	-3.6	5.8	-0.047
Other manufacturing industries	112.0	1.7	3.7	0.014
Repair and installation of machinery and equipment	87.7	-1.5	1.9	-0.018

(..) Data not available due to statistical secrecy.

#### 5. Turnover indices: General and by markets Originals series

	Index	Rate (%)	
		Annual	Year-to-date average
<b>GENERAL INDEX</b>	<b>103.8</b>	<b>-9.3</b>	<b>-1.4</b>
1. Domestic market	90.3	-8.5	-2.4
2. Foreign market	123.0	-11.8	0.2
2.1. Foreign market, euro zone	119.1	-10.6	2.1
2.2. Foreign market, non euro zone	130.0	-13.5	-2.4

## 6. Turnover indices: National and by Autonomous Community

### Originals series

	Index	Rate (%)	
		Annual	Year-to-date average
<b>NATIONAL</b>	<b>103.8</b>	<b>-9.3</b>	<b>-1.4</b>
Andalucía	101.3	-13.2	-8.2
Aragón	110.9	-9.8	-1.1
Asturias, Principado de	78.3	-9.2	-7.9
Balears, Illes	85.5	3.2	-0.1
Canarias	55.3	-7.3	-2.4
Cantabria	84.7	-14.3	-7.5
Castilla y León	114.7	2.3	13.8
Castilla - La Mancha	101.2	-9.4	-3.7
Cataluña	110.8	-5.9	-0.9
Comunitat Valenciana	120.5	-11.9	0.8
Extremadura	102.7	0.2	1.8
Galicia	92.8	-10.7	-1.9
Madrid, Comunidad de	94.2	-9.9	-1.6
Murcia, Región de	128.2	-14.0	-10.2
Navarra, Comunidad Foral de	67.6	-31.4	-4.0
País Vasco	97.7	-8.5	0.0
Rioja, La	108.7	-8.9	-2.8

For further information see **INEbase - [www.ine.es/en/](http://www.ine.es/en/)** All press releases at: **[www.ine.es/en/prensa/prensa\\_en.htm](http://www.ine.es/en/prensa/prensa_en.htm)**

**Press Office:** Telephone numbers: 91 583 93 63 / 94 08 – Fax: 91 583 90 87 - **[gprensa@ine.es](mailto:gprensa@ine.es)**

**Information Area:** Telephone number: 91 583 91 00 – Fax: 91 583 91 58 – **[www.ine.es/infoine](http://www.ine.es/infoine)**