

24 March 2015

Industrial New Orders Received Indices (INORI). Base 2010
January 2015. *Provisional data*

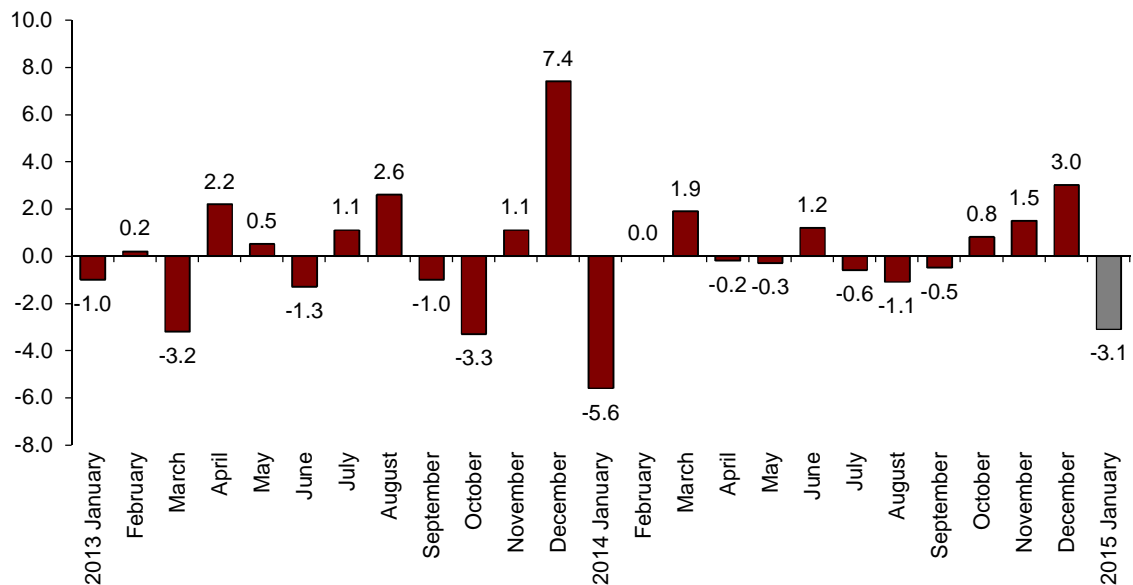
The monthly variation of the General Industrial New Orders Received Index stands at –3.1% after adjusting for the seasonal and calendar effects

The annual rate stands at 2.5% in the series adjusted for the seasonal and calendar effects and at 0.5% in the original series

Monthly evolution of New Orders Received

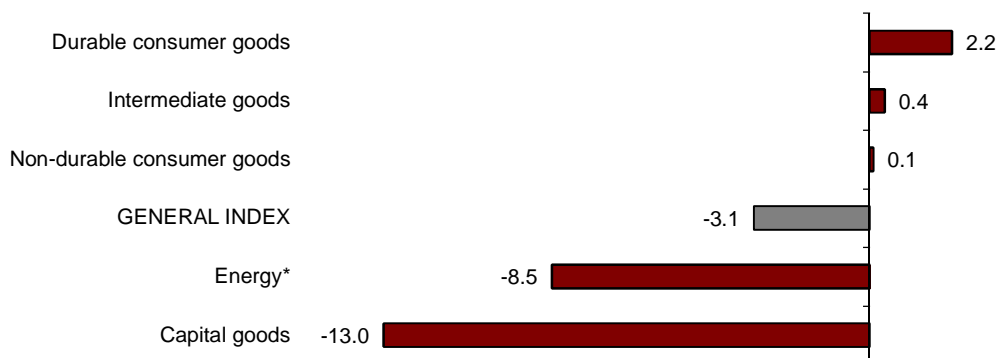
The monthly variation of the Industrial New Orders Received Index (INORI) between January and December stood at –3.1%, after adjusting for the seasonal and calendar effects. This rate was 6.1 points lower than that registered the previous month.

New Orders Received General Index
Adjusted for seasonal and calendar effects. Monthly rate



By economic destination of the goods, Durable consumer goods (2.2%) Intermediate consumer goods (0.4%) and Non-durable consumer goods registered positive monthly rates. In turn, Capital goods (-13.0%) and Energy (-8.5%) registered negative monthly rates.

**New Orders Received indices: General and by economic destination
Adjusted for seasonal and calendar effects. Monthly rate**



*Energy does not include electric power supply, nor water, steam, gas or air-conditioning supply.

A more detailed analysis showed the branches of activity with the highest and the lowest monthly rates in January.

**Branches of activity with the highest monthly rates of the Industry New Orders Received Index,
Adjusted for seasonal and calendar effects**

Branch of activity (Section of the CNAE 2009)	Monthly rate (%)
Manufacture of computer, electronic and optical products	19.7
Repair and installation of machinery and equipment	13.8
Graphic arts and reproduction of recorded media	7.6

**Branches of activity with the lowest monthly rates of the Industry New Orders Received Index,
Adjusted for seasonal and calendar effects**

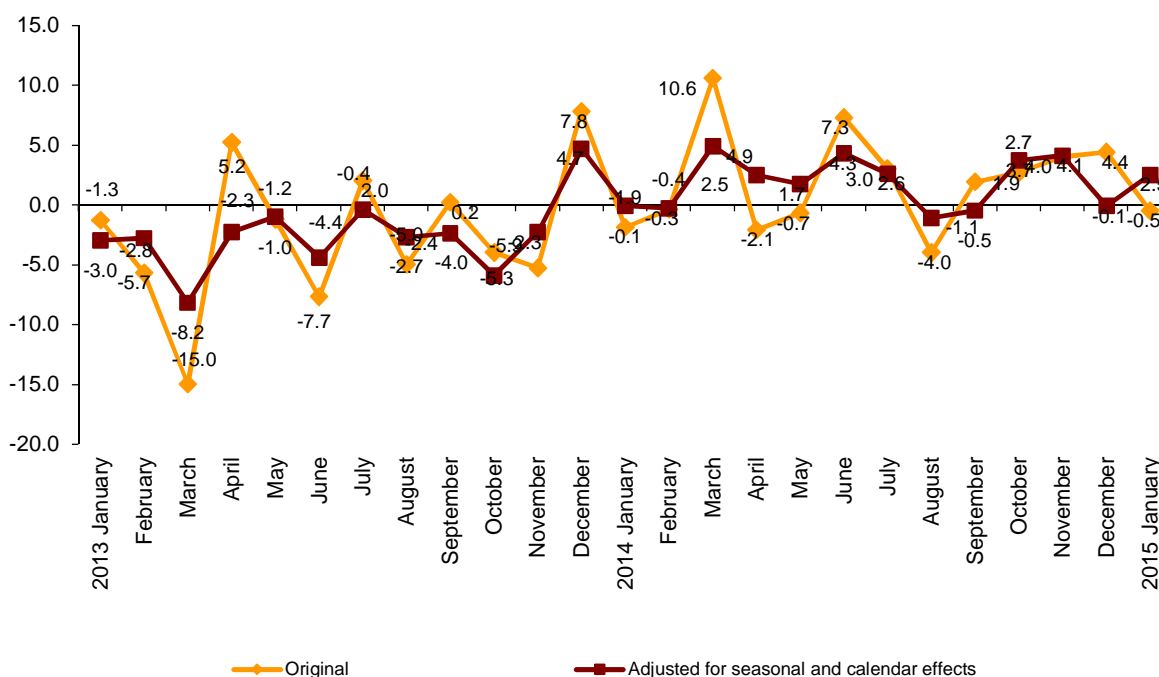
Branch of activity (Section of the CNAE 2009)	Monthly rate (%)
Leather and footwear industry	-11.7
Manufacture of coke and refined petroleum products	-11.0
Extraction of anthracite, coal and lignite	-7.2

Annual evolution of the New Orders Received

The Industrial New Orders Received Index (INORI), after adjusting for seasonal and calendar effects, registered a variation of 2.5% in January, as compared with the same month of the previous year. This rate was 2.6 points higher than that registered in December 2014.

The original series of the INORI registered an annual variation of -0.5%, that is, almost five points lower than of December 2014.

Industry New Orders Received General Index Annual rates



By economic destination of the goods, four out of five sectors recorded positive rates, after adjusting for seasonal and calendar effects. Worth noting was the increase of Capital goods (21.9%).

Annual rates of indices of the New Orders Received: General and by economic destination of the goods

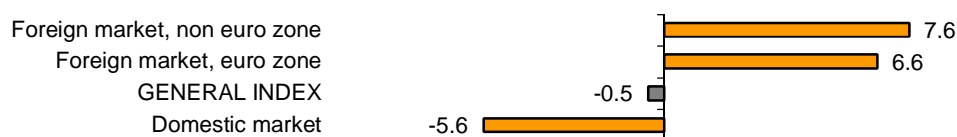
	Original index	Index adjusted for seasonal and calendar effects
	Annual rate (%)	Annual rate (%)
GENERAL INDEX	-0.5	2.5
1. Consumer goods	-2.5	0.5
1.1. Durable consumer goods	-1.2	1.6
1.2. Non-durable consumer goods	-2.5	0.5
2. Capital goods	19.0	21.9
3. Intermediate goods	-1.8	1.1
4. Energy*	-31.4	-30.0

* Except supply of electrical energy, gas, steam, air conditioning and water.

Annual evolution of New Orders Received by destination market. Original series

By geographical destination, two out of three markets analysed registered positive annual rates in January. Worth noting was the 7.6% increase in the non-euro zone of the foreign market.

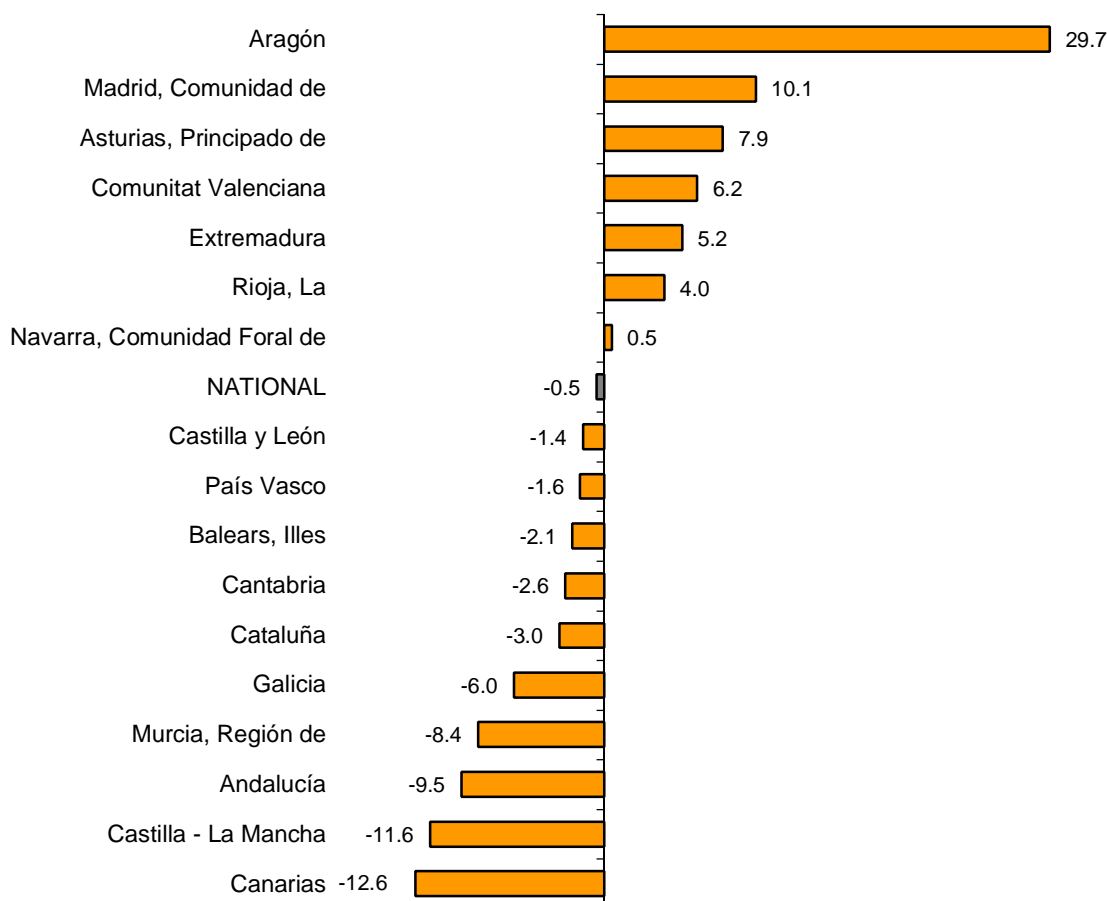
**Industrial new orders received indices: General and by market
Annual rate**



Results by Autonomous Community. Annual variation rate of the industrial turnover. Original series

As compared to January 2014, turnover decreased in 10 Autonomous Communities and increased in the remaining seven. The highest decrease was recorded in Canarias (-12.6%) and the greatest increase was registered in Aragón (29.7%).

**General indices: National and by Autonomous Community
Annual rate and average rate of Industry New Orders Received**



Industrial New Orders Received Index. Base 2010

January 2015

Provisional data

1. New Orders Received indices¹ Adjusted for seasonal and calendar effects

	Index	Rate (%)		
		Monthly	Annual	Year-to-date average
GENERAL INDEX	103.6	-3.1	2.5	2.5
1. Consumer goods	98.8	-0.1	0.5	0.5
1.1. Durable consumer goods	68.5	2.2	1.6	1.6
1.2. Non-durable consumer goods	102.3	0.1	0.5	0.5
2. Capital goods	119.2	-13.0	21.9	21.9
3. Intermediate goods	94.7	0.4	1.1	1.1
4. Energy*	102.3	-8.5	-30.0	-30.0

¹ Regulation (EC) no. 656/2007 of the Commission of 14 June 2007.

* Except supply of electrical energy, gas, steam, air conditioning and water.

2. New Orders Received indices¹ Adjusted for calendar effects

	Index	Rate (%)	
		Annual	Year-to-date average
GENERAL INDEX	101.1	2.4	2.4
1. Consumer goods	95.9	0.6	0.6
1.1. Durable consumer goods	63.4	2.0	2.0
1.2. Non-durable consumer goods	99.4	0.7	0.7
2. Capital goods	116.3	22.1	22.1
3. Intermediate goods	97.4	1.1	1.1
4. Energy*	92.3	-31.0	-31.0

¹ Regulation (EC) no. 656/2007 of the Commission of 14 June 2007.

* Except supply of electrical energy, gas, steam, air conditioning and water.

3. New Orders Received indices: General and by activities Originals series

	Index	Rate (%)		Effect Annual
		Annual	Year-to-date average	
GENERAL INDEX	98.9	-0.5	-0.5	
1. CONSUMER GOODS	93.7	-2.5	-2.5	-0.738
1.1. Durable consumer goods	61.8	-1.2	-1.2	-0.021
- Manufacture of consumer electronics, optical instruments and photographic equipment	9.2	7.1	7.1	0.002
- Manufacture of household appliances	82.4	4.9	4.9	0.028
- Manufacture of motorcycles, bicycles, vehicles for the disabled and others	23.8	-16.4	-16.4	-0.009
- Manufacture of furniture	66.6	-2.5	-2.5	-0.026
- Manufacture of jewellery, costume jewellery and musical instruments	74.0	-12.9	-12.9	-0.018
1.2. Non-durable consumer goods	96.9	-2.5	-2.5	-0.717
- Food industries (except grain mill products and food for animals)	103.8	-0.4	-0.4	-0.058
- Manufacture of beverages	73.3	-6.3	-6.3	-0.172
- Manufacture of tobacco	74.0	-0.4	-0.4	-0.001
- Manufacture of knitted fabrics, carpets, rope, non-woven fabrics, textile products for technical use and industrial and other textile products	96.2	-6.2	-6.2	-0.042
- Manufacture of garments	82.8	-5.4	-5.4	-0.061
- Leather and footwear industry	65.7	-18.0	-18.0	-0.124
- Graphic arts and reproduction of recorded media	130.3	7.9	7.9	0.156
- Manufacture of cleaning articles, perfumes and cosmetics	89.2	-12.3	-12.3	-0.181
- Manufacture of pharmaceutical products	95.5	-6.3	-6.3	-0.214
- Manufacture of sporting goods; games and toys and Other manufacturing industries	73.8	-6.0	-6.0	-0.018
2. CAPITAL GOODS	114.0	19.0	19.0	4.304
- Manufacture of metal products for construction, containers made of metal, steam generators, weapons and ammunition	67.8	10.9	10.9	0.198
- Manufacture of computers, peripherals and telecommunications equipment; appliances for measuring and navigation; radiation and medical and therapeutic equipment	88.0	11.2	11.2	0.073
- Manufacture of machinery and equipment n.e.c.	102.0	10.1	10.1	0.354
- Manufacture of motor vehicles, trailers and semi-trailers	127.6	14.8	14.8	1.894
- Naval, railway, aircraft and spacecraft construction. Combat vehicles	119.7	71.3	71.3	1.322
- Manufacture of medical and dental instruments and supplies	93.8	-1.9	-1.9	-0.006
- Repair and installation of machinery and equipment	140.1	27.8	27.8	0.469
3. INTERMEDIATE GOODS	95.2	-1.8	-1.8	-0.672
- Other mining and quarrying	79.8	3.7	3.7	0.024
- Manufacture of grain mill products, starches, and food for animals	115.8	-4.0	-4.0	-0.122
- Preparation and spinning of textile fibres. Manufacture of woven textiles. Textile finishings	88.1	-6.5	-6.5	-0.032
- Wood and cork industry	86.2	0.6	0.6	0.008
- Paper industry	99.7	-5.7	-5.7	-0.168
- Chemical industry except cleaning articles, perfumes and cosmetics	112.9	1.0	1.0	0.074
- Rubber and plastic material transformation industry	93.7	-1.1	-1.1	-0.041
- Manufacture of other non-metallic ore products	70.1	2.0	2.0	0.063
- Metallurgy; manufacture of iron, steel and ferro-alloy products	94.0	-3.0	-3.0	-0.193
- Forging, stamping, embossing and rolling of metals. - Manufacture of tools, hardware goods, containers and other metal products	101.1	-3.6	-3.6	-0.161
- Manufacture of electronic components, assembled printed circuits, and magnetic and optical media	112.1	137.4	137.4	0.211
- Manufacture of electrical material and equipment except household appliances	78.4	-12.3	-12.3	-0.335
4. ENERGY*	91.9	-31.4	-31.4	-3.384
- Extraction of anthracite, coal and lignite	74.2	13.4	13.4	..
- Extraction of crude oil, petroleum and natural gas
- Manufacture of coke and refined petroleum products	92.1	-31.5	-31.5	-3.349

* Except supply of electrical energy, gas, steam, air conditioning and water.

(..) Data not available due to statistical secrecy.

4. New Orders Received indices: General and by branch of activity Originals series

	Index	Rate (%)		Effect
		Annual	Year-to-date average	Annual
GENERAL INDEX	98.9	-0.5	-0.5	
B. Mining and quarrying industries	80.0	-1.4	-1.4	-0.011
Extraction of anthracite, coal and lignite	74.2	13.4	13.4	..
Extraction of crude oil, petroleum and natural gas
Other mining and quarrying	79.8	3.7	3.7	0.024
C. Manufacturing industry	99.0	-0.5	-0.5	-0.478
Food industry	105.5	-1.0	-1.0	-0.180
Manufacture of beverages	73.3	-6.3	-6.3	-0.172
Manufacture of tobacco	74.0	-0.4	-0.4	-0.001
Textile industry	92.6	-6.3	-6.3	-0.074
Manufacture of garments	82.8	-5.4	-5.4	-0.061
Leather and footwear industry	65.7	-18.0	-18.0	-0.124
Manufacture of wood and of products of wood and cork, except furniture; basketmaking and wickerwork	86.2	0.6	0.6	0.008
Paper industry	99.7	-5.7	-5.7	-0.168
Graphic arts and reproduction of recorded media	130.3	7.9	7.9	0.156
Manufacture of coke and refined petroleum products	92.1	-31.5	-31.5	-3.349
Chemical industry	108.5	-1.2	-1.2	-0.108
Manufacture of pharmaceutical products	95.5	-6.3	-6.3	-0.214
Rubber and plastic material transformation industry	93.7	-1.1	-1.1	-0.041
Manufacture of other non-metallic ore products	70.1	2.0	2.0	0.063
Metallurgy; manufacture of iron, steel and ferro-alloy products	94.0	-3.0	-3.0	-0.193
Manufacture of metal products, except machinery and equipment	87.5	0.6	0.6	0.037
Manufacture of computer, electronic and optical products	76.0	34.2	34.2	0.287
Manufacture of electrical material and equipment	79.2	-9.3	-9.3	-0.306
Manufacture of machinery and equipment n.e.c.	102.0	10.1	10.1	0.354
Manufacture of motor vehicles, trailers and semi-trailers	127.6	14.8	14.8	1.894
Manufacture of other transport material	113.4	68.9	68.9	1.313
Manufacture of furniture	66.6	-2.5	-2.5	-0.026
Other manufacturing industries	81.6	-5.5	-5.5	-0.042
Repair and installation of machinery and equipment	140.1	27.8	27.8	0.469

(..) Data not available due to statistical secrecy.

5. New Orders Received indices: General and by markets Originals series

	Index	Rate (%)	
		Annual	Year-to-date average
GENERAL INDEX	98.9	-0.5	-0.5
1. Domestic market	86.3	-5.6	-5.6
2. Foreign market	118.3	6.5	6.5
2.1. Foreign market, euro zone	116.2	6.6	6.6
2.2. Foreign market, non euro zone	124.2	7.6	7.6

6. New Orders Received indices: National and by Autonomous Community

Originals series

	Index	Rate (%)	
		Annual	Year-to-date average
NATIONAL	98.9	-0.5	-0.5
Andalucía	95.7	-9.5	-9.5
Aragón	125.0	29.7	29.7
Asturias, Principado de	93.0	7.9	7.9
Balears, Illes	56.0	-2.1	-2.1
Canarias	62.4	-12.6	-12.6
Cantabria	87.8	-2.6	-2.6
Castilla y León	87.5	-1.4	-1.4
Castilla - La Mancha	85.6	-11.6	-11.6
Cataluña	100.8	-3.0	-3.0
Comunitat Valenciana	108.8	6.2	6.2
Extremadura	99.2	5.2	5.2
Galicia	93.6	-6.0	-6.0
Madrid, Comunidad de	98.5	10.1	10.1
Murcia, Región de	135.1	-8.4	-8.4
Navarra, Comunidad Foral de	90.9	0.5	0.5
País Vasco	93.8	-1.6	-1.6
Rioja, La	89.3	4.0	4.0

For further information see **INEbase** - www.ine.es/en/ All press releases at: www.ine.es/en/prensa/prensa_en.htm

Press Office: Telephone numbers: 91 583 93 63 / 94 08 – Fax: 91 583 90 87 - gprensa@ine.es

Information Area: Telephone number: 91 583 91 00 – Fax: 91 583 91 58 – www.ine.es/infoine