

20 May 2014

Industrial New Orders Received Indices (INORI). Base 2010
 March 2014. *Provisional data*

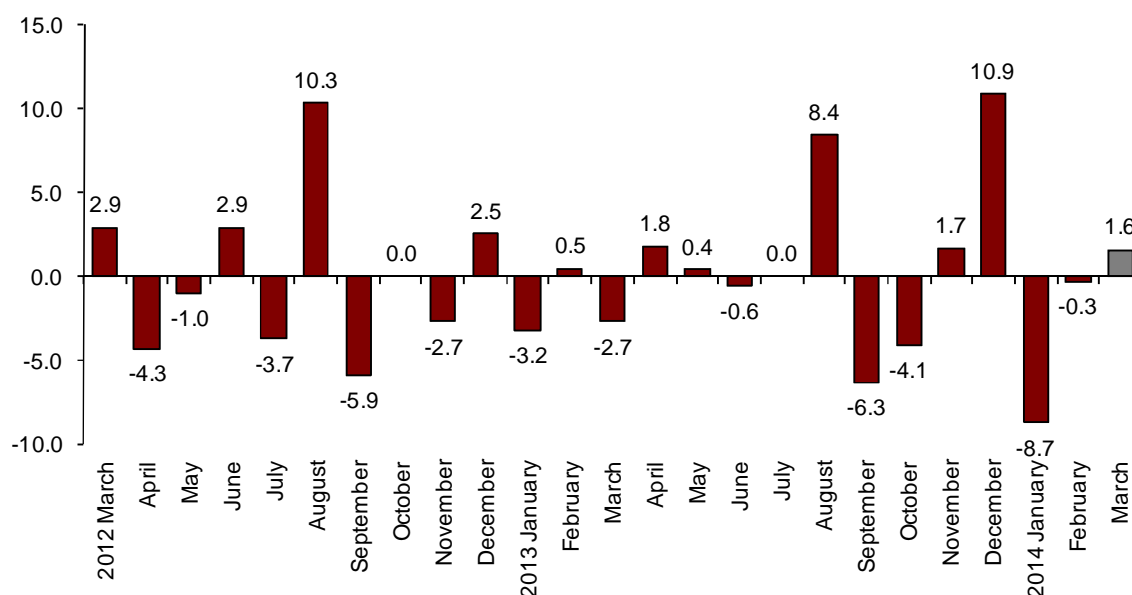
The monthly variation of the General Industrial New Orders Received Index stands at 1.6% in the series adjusted for the seasonal and calendar effects

The annual rate stands at 3.1% in the series adjusted for the seasonal and calendar effects and at 8.7% in the original series

Monthly evolution of New Orders Received

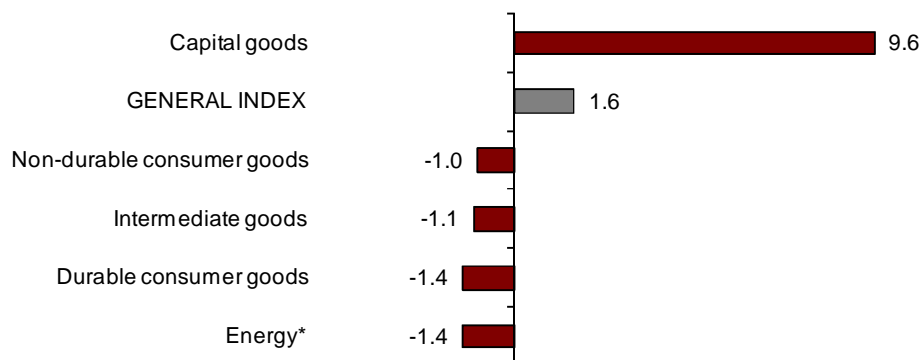
The monthly variation of the Industrial New Orders Received Index (INORI) between March and February 2014 stood at 1.6%, after adjusting for the seasonal and calendar effects. This rate was nearly two points higher than that registered in February.

New Orders Received General Index
 Adjusted for seasonal and calendar effects. Monthly rate



By economic destination of the goods, all the sectors analysed recorded a decrease in their orders received, as compared with the previous month, except *Capital goods*, which increased 9.6%.

**New Orders Received indices: General and by economic destination
Adjusted for seasonal and calendar effects. Monthly rate**



*Energy does not include electric power supply, nor water, steam, gas or air-conditioning supply.

A more detailed analysis showed the branches of activity with the highest and the lowest monthly rates in March.

**Branches of activity with the highest monthly rates of the Industry New Orders Received Index,
Adjusted for seasonal and calendar effects**

Branch of activity (Section of the CNAE 2009)	Monthly rate (%)
Manufacture of other transport material	55.0
Repair and installation of machinery and equipment	42.8
Manufacture of computer, electronic and optical products	30.7

**Branches of activity with the lowest monthly rates of the Industry New Orders Received Index,
Adjusted for seasonal and calendar effects**

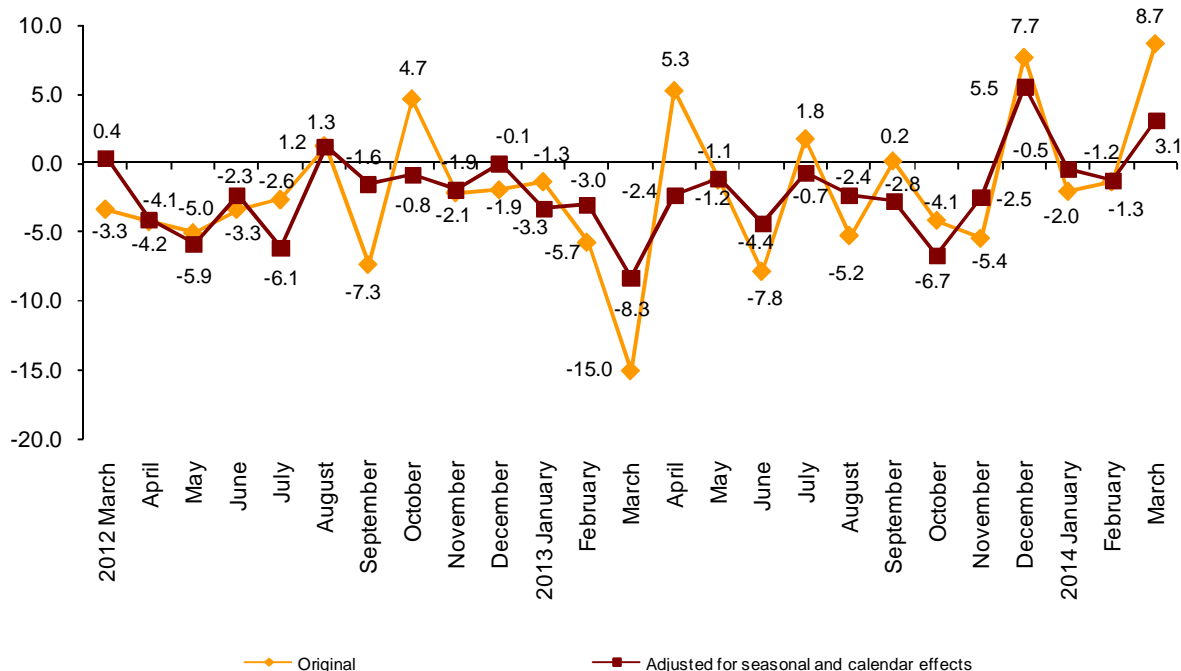
Branch of activity (Section of the CNAE 2009)	Monthly rate (%)
Manufacture of electrical material and equipment	-11.2
Other manufacturing industries	-8.1
Manufacture of garments	-5.6

Annual evolution of the New Orders Received

The Industrial New Orders Received Index (INORI), after adjusting for seasonal and calendar effects, registered a variation of 3.1% in March, as compared with the same month of the previous year. This rate was 4.3 points higher than that registered in February.

The original series of the INORI registered an annual variation of 8.7%, that is, more than 10 points higher than that registered in the previous month.

Industry New Orders Received General Index Annual rates



By economic destination of the goods, all the sectors analysed recorded negative annual rates after adjusting for seasonal and calendar effects, except *Capital goods*, which recorded an increase of 19.5%.

Annual rates of indices of the New Orders Received: General and by economic destination of the goods

	Original index	Index adjusted for seasonal and calendar effects
	Annual rate (%)	Annual rate (%)
GENERAL INDEX	8.7	3.1
1. Consumer goods	4.2	-1.2
1.1. Durable consumer goods	1.7	-6.9
1.2. Non-durable consumer goods	4.4	-1.0
2. Capital goods	26.3	19.5
3. Intermediate goods	6.3	-1.5
4. Energy*	-6.9	-9.3

* Except supply of electrical energy, gas, steam, air conditioning and water.

Annual evolution of New Orders Received by destination market. Original series

New orders received increased in all markets as compared with March 2013, especially in the non euro zone (12.1%).

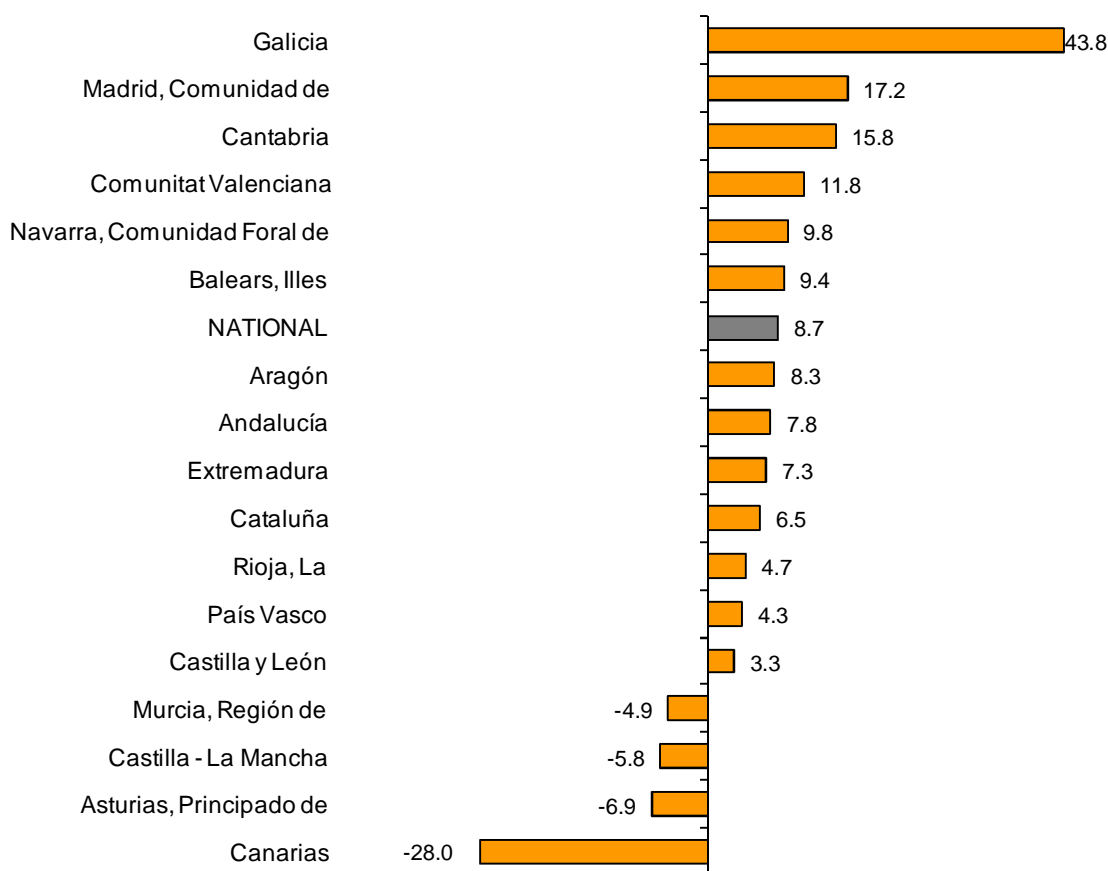
**Industrial new orders received indices: General and by market
Annual rate**



Results by Autonomous Community. Annual variation rate of the New Orders Received. Original series

In March, 13 Autonomous Communities registered increases in their New Orders Received and four Autonomous Communities recorded decreases. The greatest increase was registered in Galicia (43.8%) and the greatest drop was recorded in Canarias (-28.0%).

**General indices: National and by Autonomous Community
Annual rate of Industry New Orders Received**



Industrial New Orders Received Index. Base 2010

March 2014

Provisional data

1. New Orders Received indices¹ Adjusted for seasonal and calendar effects

	Index	Rate (%)		
		Monthly	Annual	Year-to-date average
GENERAL INDEX	101.1	1.6	3.1	0.4
1. Consumer goods	96.4	-0.9	-1.2	-0.8
1.1. Durable consumer goods	65.1	-1.4	-6.9	-5.6
1.2. Non-durable consumer goods	99.5	-1.0	-1.0	-0.4
2. Capital goods	107.4	9.6	19.5	7.5
3. Intermediate goods	93.6	-1.1	-1.5	-0.8
4. Energy*	134.9	-1.4	-9.3	-9.3

¹ Regulation (EC) no. 656/2007 of the Commission of 14 June 2007.

* Except supply of electrical energy, gas, steam, air conditioning and water.

2. New Orders Received indices¹ Adjusted for calendar effects

	Index	Rate (%)	
		Annual	Year-to-date average
GENERAL INDEX	109.1	3.2	0.5
1. Consumer goods	99.3	-1.4	-0.7
1.1. Durable consumer goods	68.6	-6.9	-5.6
1.2. Non-durable consumer goods	102.3	-1.2	-0.4
2. Capital goods	124.3	20.1	8.2
3. Intermediate goods	100.3	-1.4	-0.6
4. Energy*	137.5	-9.5	-9.4

¹ Regulation (EC) no. 656/2007 of the Commission of 14 June 2007.

* Except supply of electrical energy, gas, steam, air conditioning and water.

3. New Orders Received indices: General and by activities Originals series

	Index	Rate (%)		Effect Annual
		Annual	Year-to-date average	
GENERAL INDEX	107.6	8.7	1.8	
1. CONSUMER GOODS	97.8	4.2	0.7	1.250
1.1. Durable consumer goods	68.2	1.7	-3.2	0.032
- Manufacture of consumer electronics, optical instruments and photographic equipment	7.5	14.5	4.4	0.003
- Manufacture of household appliances	80.3	-12.4	-7.2	-0.083
- Manufacture of motorcycles, bicycles, vehicles for the disabled and others	26.9	-30.7	-19.4	-0.022
- Manufacture of furniture	79.4	12.9	0.0	0.136
- Manufacture of jewellery, costume jewellery and musical instruments	79.1	-0.6	-2.9	-0.001
1.2. Non-durable consumer goods	100.9	4.4	0.9	1.218
- Food industries (except grain mill products and food for animals)	106.9	6.1	2.9	0.925
- Manufacture of beverages	94.7	1.2	-1.2	0.038
- Manufacture of tobacco	94.0	6.5	-1.2	0.013
- Manufacture of knitted fabrics, carpets, rope, non-woven fabrics, textile products for technical use and industrial and other textile products	97.5	8.0	1.2	0.048
- Manufacture of garments	83.0	-3.1	-3.2	-0.035
- Leather and footwear industry	145.0	10.1	8.5	0.115
- Graphic arts and reproduction of recorded media	70.7	4.1	-15.8	0.046
- Manufacture of cleaning articles, perfumes and cosmetics	91.5	0.7	-2.0	0.009
- Manufacture of pharmaceutical products	96.2	0.5	2.0	0.015
- Manufacture of sporting goods; games and toys and Other manufacturing industries	93.7	14.1	7.1	0.045
2. CAPITAL GOODS	122.8	26.3	9.6	6.071
- Manufacture of metal products for construction, containers made of metal, steam generators, weapons and ammunition	63.6	-9.0	-18.4	-0.188
- Manufacture of computers, peripherals and telecommunications equipment; appliances for measuring and navigation; radiation and medical and therapeutic equipment	117.8	64.5	30.9	0.385
- Manufacture of machinery and equipment n.e.c.	101.7	2.5	-1.8	0.093
- Manufacture of motor vehicles, trailers and semi-trailers	122.6	20.1	12.9	2.366
- Naval, railway, aircraft and spacecraft construction. Combat vehicles	212.8	92.3	30.3	2.723
- Manufacture of medical and dental instruments and supplies	96.4	4.8	10.1	0.015
- Repair and installation of machinery and equipment	144.0	43.8	10.6	0.677
3. INTERMEDIATE GOODS	99.5	6.3	1.3	2.238
- Other mining and quarrying	81.0	-1.4	-5.6	-0.009
- Manufacture of grain mill products, starches, and food for animals	121.4	-3.2	-6.0	-0.103
- Preparation and spinning of textile fibres. Manufacture of woven textiles. Textile finishings	108.4	13.0	3.6	0.066
- Wood and cork industry	85.9	4.4	-0.6	0.053
- Paper industry	99.8	1.6	-1.8	0.044
- Chemical industry except cleaning articles, perfumes and cosmetics	113.1	8.5	1.6	0.579
- Rubber and plastic material transformation industry	97.5	11.3	4.5	0.401
- Manufacture of other non-metallic ore products	78.6	18.2	7.8	0.563
- Metallurgy; manufacture of iron, steel and ferro-alloy products	100.3	1.7	-0.1	0.109
- Forging, stamping, embossing and rolling of metals. - Manufacture of tools, hardware goods, containers and other metal products	109.6	14.1	6.3	0.587
- Manufacture of electronic components, assembled printed circuits, and magnetic and optical media	41.8	-45.8	-25.2	-0.115
- Manufacture of electrical material and equipment except household appliances	86.8	2.4	-0.1	0.063
4. ENERGY*	138.6	-6.9	-8.5	-0.826
- Extraction of anthracite, coal and lignite	41.3	-14.5	-18.8	..
- Extraction of crude oil, petroleum and natural gas
- Manufacture of coke and refined petroleum products	139.9	-6.7	-8.3	-0.799

* Except supply of electrical energy, gas, steam, air conditioning and water.

(..) Data not available due to statistical secrecy.

4. New Orders Received indices: General and by branch of activity Originals series

	Index	Rate (%)		Effect Annual
		Annual	Year-to-date average	
GENERAL INDEX	107.6	8.7	1.8	
B. Mining and quarrying industries	80.4	-4.3	-8.2	-0.036
Extraction of anthracite, coal and lignite	41.3	-14.5	-18.8	..
Extraction of crude oil, petroleum and natural gas
Other mining and quarrying	81.0	-1.4	-5.6	-0.009
C. Manufacturing industry	107.9	8.8	1.9	8.771
Food industry	109.0	4.5	1.3	0.822
Manufacture of beverages	94.7	1.2	-1.2	0.038
Manufacture of tobacco	94.0	6.5	-1.2	0.013
Textile industry	102.4	2.2	10.3	0.114
Manufacture of garments	83.0	-3.1	-3.2	-0.035
Leather and footwear industry	145.0	10.1	8.5	0.115
Manufacture of wood and of products of wood and cork, except furniture; basketmaking and wickerwork	85.9	4.4	-0.6	0.053
Paper industry	99.8	1.6	-1.8	0.044
Graphic arts and reproduction of recorded media	70.7	4.1	-15.8	0.046
Manufacture of coke and refined petroleum products	139.9	-6.7	-8.3	-0.799
Chemical industry	109.1	7.2	1.0	0.588
Manufacture of pharmaceutical products	96.2	0.5	2.0	0.015
Rubber and plastic material transformation industry	97.5	11.3	4.5	0.401
Manufacture of other non-metallic ore products	78.6	18.2	7.8	0.563
Metallurgy; manufacture of iron, steel and ferro-alloy products	100.3	1.7	-0.1	0.109
Manufacture of metal products, except machinery and equipment	90.8	6.4	-2.1	0.399
Manufacture of computer, electronic and optical products	76.9	31.4	17.2	0.273
Manufacture of electrical material and equipment	85.6	-0.6	-1.4	-0.020
Manufacture of machinery and equipment n.e.c.	101.7	2.5	-1.8	0.093
Manufacture of motor vehicles, trailers and semi-trailers	122.6	20.1	12.9	2.366
Manufacture of other transport material	200.7	89.4	28.9	2.701
Manufacture of furniture	79.4	12.9	0.0	0.136
Other manufacturing industries	92.1	7.8	6.5	0.059
Repair and installation of machinery and equipment	144.0	43.8	10.6	0.677

(..) Data not available due to statistical secrecy.

5. New Orders Received indices: General and by markets Originals series

	Index	Rate (%)	
		Annual	Year-to-date average
GENERAL INDEX	107.6	8.7	1.8
1. Domestic market	92.7	5.3	-0.4
2. Foreign market	124.3	7.3	1.8
2.1. Foreign market, euro zone	113.2	6.1	2.3
2.2. Foreign market, non euro zone	147.1	12.1	1.9

6. New Orders Received indices: National and by Autonomous Community

Originals series

	Index	Rate (%)	
		Annual	Year-to-date average
NATIONAL	107.6	8.7	1.8
Andalucía	114.2	7.8	-1.0
Aragón	117.8	8.3	3.9
Asturias, Principado de	90.0	-6.9	-3.5
Balears, Illes	89.6	9.4	-6.6
Canarias	74.2	-28.0	-28.5
Cantabria	105.7	15.8	6.8
Castilla y León	94.8	3.3	4.7
Castilla - La Mancha	100.8	-5.8	-5.0
Cataluña	107.5	6.5	3.3
Comunitat Valenciana	118.9	11.8	3.7
Extremadura	94.4	7.3	6.8
Galicia	137.2	43.8	12.6
Madrid, Comunidad de	99.0	17.2	-5.6
Murcia, Región de	103.5	-4.9	-2.0
Navarra, Comunidad Foral de	93.1	9.8	6.0
País Vasco	98.8	4.3	1.8
Rioja, La	102.1	4.7	0.6

For further information see **INEbase** - www.ine.es/en/ All press releases at: www.ine.es/en/prensa/prensa_en.htm

Press Office: Telephone numbers: 91 583 93 63 / 94 08 – Fax: 91 583 90 87 - gprensa@ine.es

Information Area: Telephone number: 91 583 91 00 – Fax: 91 583 91 58 – www.ine.es/infoine