

21 September 2016

Índices de Entradas de Pedidos en la Industria (IEP). Base 2010
Julio 2016. *Datos provisionales*

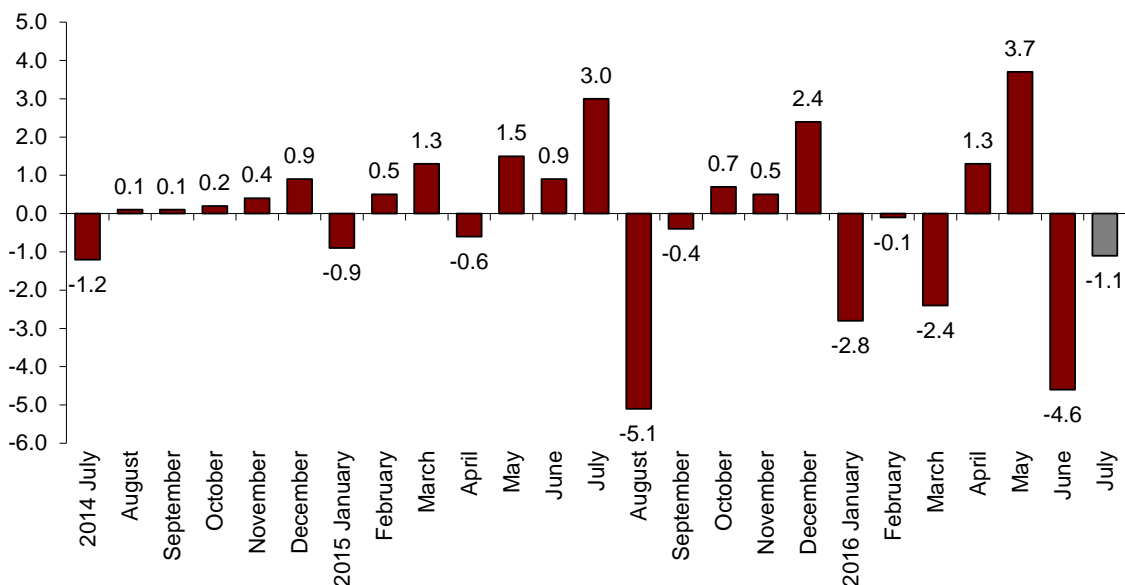
La variación mensual del Índice General de Entradas de Pedidos en la Industria¹ es del -1,1% si se eliminan los efectos estacionales y de calendario

La tasa anual se sitúa en el -8,0% en la serie corregida de efectos estacionales y de calendario, y en el -14,1% en la serie original

Evolución mensual de las entradas de pedidos en la Industria

La variación mensual del Índice de Entradas de Pedidos de la Industria entre los meses de julio y junio, eliminando los efectos estacionales y de calendario, es del -1,1%. Esta tasa es 3,5 puntos superior a la del mes anterior.

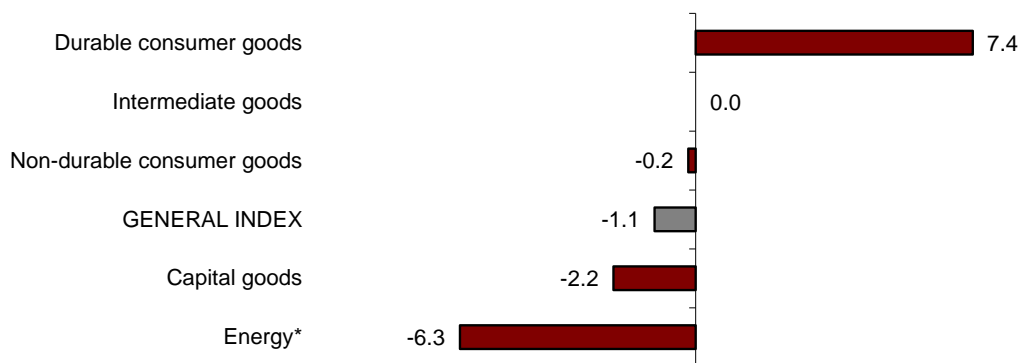
New Orders Received General Index
Adjusted for seasonal and calendar effects. Monthly rate



¹ As explained in the methodology for this value unit index, information is presented in current terms (nominal terms), that is, without adjusting the effects in the price variation of it.

Por destino económico de los bienes, tres de los cinco sectores presentan tasas mensuales negativas. Los mayores descensos se dan en *Energía* (-6,3%) y *Bienes de equipo* (-2,2%). El único sector que aumenta es *Bienes de consumo duradero* (7,4%).

**New Orders Received indices: General and by economic destination
Adjusted for seasonal and calendar effects. Monthly rate**



* Except supply of electrical energy, gas, steam, air conditioning and water.

En un análisis más detallado, se pueden observar las ramas de actividad con las tasas mensuales mayores y menores en el mes de julio.

**Branches of activity with the highest monthly rates of the Industry New Orders Received Index,
Adjusted for seasonal and calendar effects**

Branch of activity (Section of the CNAE 2009)	Monthly rate (%)
Manufacture of tobacco	52.2
Manufacture of furniture	13.5
Repair and installation of machinery and equipment	12.1

**Branches of activity with the lowest monthly rates of the Industry New Orders Received Index,
Adjusted for seasonal and calendar effects**

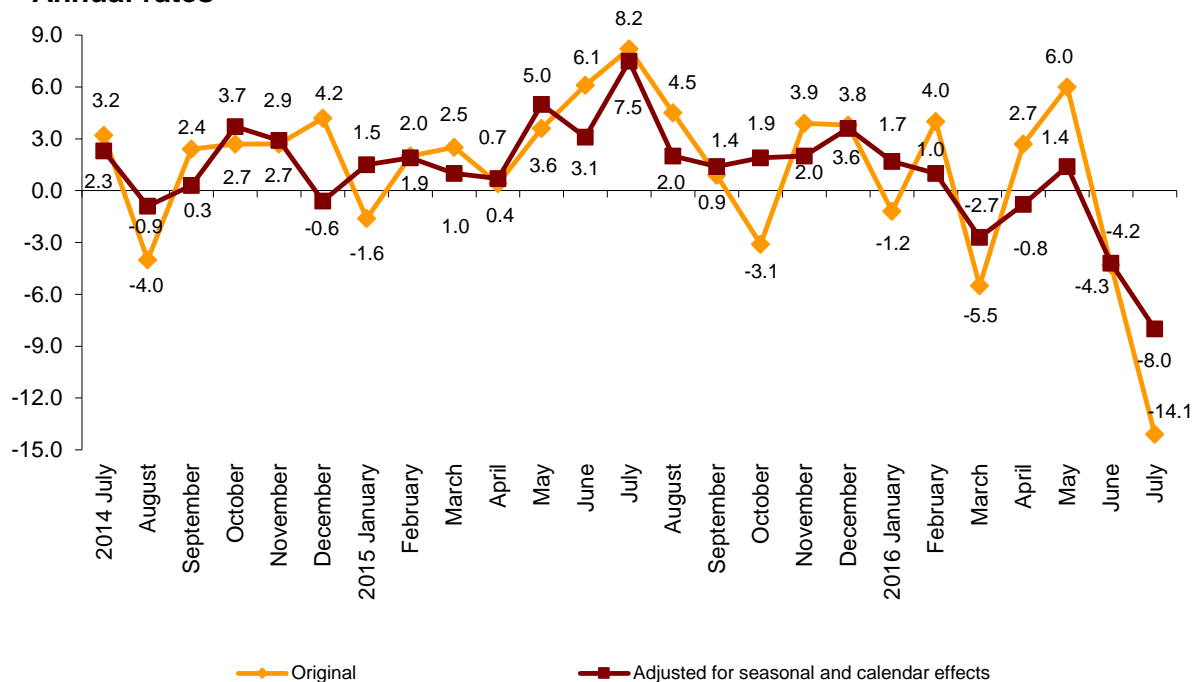
Branch of activity (Section of the CNAE 2009)	Monthly rate (%)
Extraction of anthracite, coal and lignite	-49.8
Manufacture of other transport material	-21.7
Manufacture of coke and refined petroleum products	-8.9

Evolución anual de las entradas de pedidos

El Índice de Entradas de Pedidos en la Industria corregido de efectos estacionales y de calendario presenta en julio una variación del $-8,0\%$ respecto al mismo mes del año anterior. Esta tasa es 3,8 puntos inferior a la de junio.

La serie original del IEP experimenta una variación anual del $-14,1\%$. Esta tasa es 9,8 puntos inferior a la de junio.

Industry New Orders Received General Index Annual rates



Por destino económico de los bienes, los índices corregidos de efectos estacionales y de calendario presentan tasas anuales negativas en tres de los cinco sectores. Destaca el aumento de Bienes de consumo duradero (14,2%) y el descenso de *Energía* ($-27,5\%$).

Annual rates of indices of the New Orders Received: General and by economic destination of the goods

	Original index	Index adjusted for seasonal and calendar effects
	Annual rate (%)	Annual rate (%)
GENERAL INDEX	-14.1	-8.0
1. Consumer goods	-3.6	3.1
1.1. Durable consumer goods	8.1	14.2
1.2. Non-durable consumer goods	-4.4	2.7
2. Capital goods	-25.0	-19.0
3. Intermediate goods	-10.3	-3.5
4. Energy*	-28.4	-27.5

* Except supply of electrical energy, gas, steam, air conditioning and water.

Evolución anual de las entradas de pedidos por mercado. Serie original

Por destino geográfico de las ventas, en julio se observa que todos los mercados presentan tasas anuales negativas. El mayor descenso (-34,2%) se produce en la zona no euro del mercado exterior.

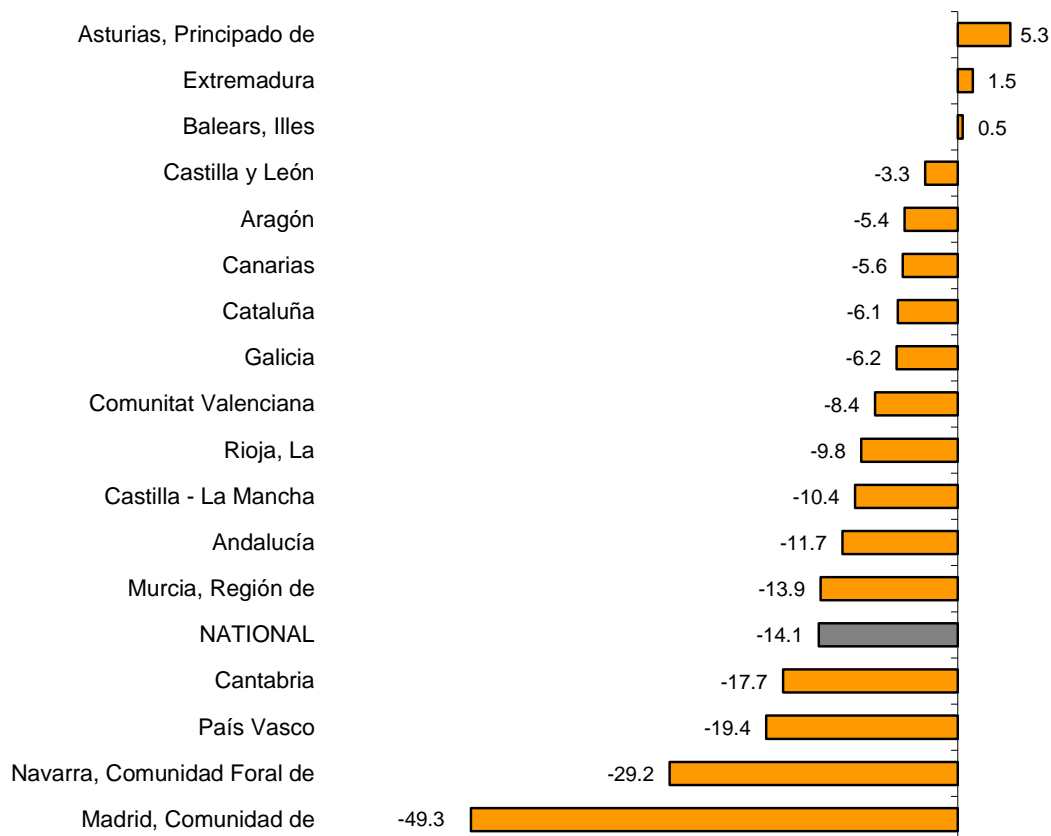
Industrial new orders received indices: General and by market Annual rate



Resultados por comunidades autónomas. Tasas de variación anual de las entradas de pedidos. Serie original

Las entradas de pedidos aumentan respecto a julio de 2015 en tres comunidades autónomas y disminuyen en las otras 14. Comunidad de Madrid registra el mayor descenso (-49,3%) y Principado de Asturias el mayor aumento (5,3%).

General indices: National and by Autonomous Community Annual rate and average rate of Industry New Orders Received



Industrial New Orders Received Index. Base 2010

July 2016

Provisional data

1. New Orders Received indices¹ Adjusted for seasonal and calendar effects

	Index	Rate (%)		
		Monthly	Annual	Year-to-date average
GENERAL INDEX	101.2	-1.1	-8.0	-1.7
1. Consumer goods	104.2	0.1	3.1	2.7
1.1. Durable consumer goods	80.0	7.4	14.2	6.6
1.2. Non-durable consumer goods	107.4	-0.2	2.7	2.5
2. Capital goods	116.0	-2.2	-19.0	3.7
3. Intermediate goods	93.3	0.0	-3.5	-3.3
4. Energy*	81.7	-6.3	-27.5	-27.6

¹ Regulation (EC) no. 656/2007 of the Commission of 14 June 2007.

* Except supply of electrical energy, gas, steam, air conditioning and water.

2. New Orders Received indices¹ Adjusted for calendar effects

	Index	Rate (%)	
		Annual	Year-to-date average
GENERAL INDEX	105.9	-8.4	-1.9
1. Consumer goods	112.8	3.4	2.7
1.1. Durable consumer goods	91.9	16.0	6.8
1.2. Non-durable consumer goods	115.1	2.8	2.5
2. Capital goods	115.3	-19.8	3.7
3. Intermediate goods	98.4	-3.5	-3.4
4. Energy*	88.8	-27.4	-27.7

¹ Regulation (EC) no. 656/2007 of the Commission of 14 June 2007.

* Except supply of electrical energy, gas, steam, air conditioning and water.

3. New Orders Received indices: General and by activities Originals series

	Index	Rate (%)		Effect Annual
		Annual	Year-to-date average	
GENERAL INDEX	101.9	-14.1	-2.1	
1. CONSUMER GOODS	108.0	-3.6	2.5	-1.055
1.1. Durable consumer goods	88.0	8.1	6.1	0.159
- Manufacture of consumer electronics, optical instruments and photographic equipment	10.0	-26.5	-7.9	-0.010
- Manufacture of household appliances	75.9	-12.2	-5.3	-0.065
- Manufacture of motorcycles, bicycles, vehicles for the disabled and others	30.2	-14.8	2.6	-0.008
- Manufacture of furniture	117.6	20.1	12.7	0.245
- Manufacture of jewellery, costume jewellery and musical instruments	93.8	-2.3	1.5	-0.003
1.2. Non-durable consumer goods	110.1	-4.4	2.3	-1.214
- Food industries (except grain mill products and food for animals)	115.2	-4.6	1.8	-0.707
- Manufacture of beverages	126.0	-2.5	4.4	-0.096
- Manufacture of tobacco	29.9	-60.9	-24.8	-0.088
- Manufacture of knitted fabrics, carpets, rope, non-woven fabrics, textile products for technical use and industrial and other textile products	108.7	-3.2	5.2	-0.020
- Manufacture of garments	88.0	-10.1	1.6	-0.108
- Leather and footwear industry	104.0	-1.6	4.7	-0.012
- Graphic arts and reproduction of recorded media	64.3	-5.3	-3.6	-0.049
- Manufacture of cleaning articles, perfumes and cosmetics	103.7	1.6	11.7	0.020
- Manufacture of pharmaceutical products	110.6	-3.8	1.5	-0.121
- Manufacture of sporting goods; games and toys and Other manufacturing industries	116.3	-8.0	1.4	-0.033
2. CAPITAL GOODS	110.7	-25.0	3.2	-7.291
- Manufacture of metal products for construction, containers made of metal, steam generators, weapons and ammunition	77.3	-16.1	-15.0	-0.370
- Manufacture of computers, peripherals and telecommunications equipment; appliances for measuring and navigation; radiation and medical and therapeutic equipment	87.0	-23.9	5.9	-0.190
- Manufacture of machinery and equipment n.e.c.	120.0	1.3	-0.9	0.050
- Manufacture of motor vehicles, trailers and semi-trailers	128.3	-7.5	7.8	-1.006
- Naval, railway, aircraft and spacecraft construction. Combat vehicles	68.6	-79.6	0.0	-5.931
- Manufacture of medical and dental instruments and supplies	122.2	9.4	8.4	0.030
- Repair and installation of machinery and equipment	104.1	10.4	3.6	0.126
3. INTERMEDIATE GOODS	94.2	-10.3	-3.7	-3.414
- Other mining and quarrying	74.7	-18.2	-9.3	-0.116
- Manufacture of grain mill products, starches, and food for animals	114.4	-7.9	-1.2	-0.208
- Preparation and spinning of textile fibres. Manufacture of woven textiles. Textile finishings	94.0	-14.0	0.4	-0.068
- Wood and cork industry	94.6	-7.7	3.8	-0.098
- Paper industry	102.1	-5.3	0.5	-0.133
- Chemical industry except cleaning articles, perfumes and cosmetics	97.5	-14.2	-7.6	-0.879
- Rubber and plastic material transformation industry	99.4	-5.2	2.3	-0.186
- Manufacture of other non-metallic ore products	85.6	0.5	4.3	0.018
- Metallurgy; manufacture of iron, steel and ferro-alloy products	82.5	-17.2	-16.2	-0.956
- Forging, stamping, embossing and rolling of metals. - Manufacture of tools, hardware goods, containers and other metal products	107.0	-9.2	1.8	-0.394
- Manufacture of electronic components, assembled printed circuits, and magnetic and optical media	50.0	-0.4	-24.4	-0.001
- Manufacture of electrical material and equipment except household appliances	86.4	-15.2	-1.1	-0.395
4. ENERGY*	88.1	-28.4	-27.9	-2.357
- Extraction of anthracite, coal and lignite	23.2	-68.2	-50.3	..
- Extraction of crude oil, petroleum and natural gas
- Manufacture of coke and refined petroleum products	89.2	-28.0	-27.5	-2.289

* Except supply of electrical energy, gas, steam, air conditioning and water.

(..) Data not available due to statistical secrecy.

4. New Orders Received indices: General and by branch of activity Originals series

	Index	Rate (%)		Effect
		Annual	Year-to-date average	Annual
GENERAL INDEX	101.9	-14.1	-2.1	
B. Mining and quarrying industries	67.7	-24.7	-16.4	-0.185
Extraction of anthracite, coal and lignite	23.2	-68.2	-50.3	..
Extraction of crude oil, petroleum and natural gas
Other mining and quarrying	74.7	-18.2	-9.3	-0.116
C. Manufacturing industry	102.2	-14.0	-2.0	-13.933
Food industry	115.1	-5.1	1.3	-0.915
Manufacture of beverages	126.0	-2.5	4.4	-0.096
Manufacture of tobacco	29.9	-60.9	-24.8	-0.088
Textile industry	102.2	-7.9	3.1	-0.088
Manufacture of garments	88.0	-10.1	1.6	-0.108
Leather and footwear industry	104.0	-1.6	4.7	-0.012
Manufacture of wood and of products of wood and cork, except furniture; basketmaking and wickerwork	94.6	-7.7	3.8	-0.098
Paper industry	102.1	-5.3	0.5	-0.133
Graphic arts and reproduction of recorded media	64.3	-5.3	-3.6	-0.049
Manufacture of coke and refined petroleum products	89.2	-28.0	-27.5	-2.289
Chemical industry	98.7	-11.6	-4.4	-0.859
Manufacture of pharmaceutical products	110.6	-3.8	1.5	-0.121
Rubber and plastic material transformation industry	99.4	-5.2	2.3	-0.186
Manufacture of other non-metallic ore products	85.6	0.5	4.3	0.018
Metallurgy; manufacture of iron, steel and ferro-alloy products	82.5	-17.2	-16.2	-0.956
Manufacture of metal products, except machinery and equipment	94.9	-11.6	-4.1	-0.764
Manufacture of computer, electronic and optical products	62.0	-20.7	-0.5	-0.200
Manufacture of electrical material and equipment	84.4	-14.7	-1.8	-0.460
Manufacture of machinery and equipment n.e.c.	120.0	1.3	-0.9	0.050
Manufacture of motor vehicles, trailers and semi-trailers	128.3	-7.5	7.8	-1.006
Manufacture of other transport material	66.1	-79.1	0.0	-5.939
Manufacture of furniture	117.6	20.1	12.7	0.245
Other manufacturing industries	114.5	-0.6	4.3	-0.005
Repair and installation of machinery and equipment	104.1	10.4	3.6	0.126

(..) Data not available due to statistical secrecy.

5. New Orders Received indices: General and by markets Originals series

	Index	Rate (%)	
		Annual	Year-to-date average
GENERAL INDEX	101.9	-14.1	-2.1
1. Domestic market	91.1	-8.8	-2.5
2. Foreign market	117.2	-20.5	-0.9
2.1. Foreign market, euro zone	113.7	-10.3	0.9
2.2. Foreign market, non euro zone	125.7	-34.2	-3.2

6. New Orders Received indices: National and by Autonomous Community

Originals series

	Index	Rate (%)	
		Annual	Year-to-date average
NATIONAL	101.9	-14.1	-2.1
Andalucía	100.9	-11.7	-9.2
Aragón	111.5	-5.4	-2.3
Asturias, Principado de	96.1	5.3	-8.3
Balears, Illes	82.1	0.5	3.9
Canarias	55.1	-5.6	-0.2
Cantabria	80.5	-17.7	-10.0
Castilla y León	114.7	-3.3	9.3
Castilla - La Mancha	96.9	-10.4	-5.6
Cataluña	108.3	-6.1	-1.0
Comunitat Valenciana	119.3	-8.4	0.1
Extremadura	107.0	1.5	-0.9
Galicia	96.3	-6.2	7.9
Madrid, Comunidad de	87.1	-49.3	-9.7
Murcia, Región de	125.5	-13.9	-9.7
Navarra, Comunidad Foral de	67.6	-29.2	-2.8
País Vasco	89.6	-19.4	-0.3
Rioja, La	103.1	-9.8	-2.7

For further information see **INEbase - www.ine.es/en/** All press releases at: **www.ine.es/en/prensa/prensa_en.htm**

Press Office: Telephone numbers: 91 583 93 63 / 94 08 – Fax: 91 583 90 87 - **gprensa@ine.es**

Information Area: Telephone number: 91 583 91 00 – Fax: 91 583 91 58 – **www.ine.es/infoine**