

21 September 2017

Industry New Order Entries Rates (in Spanish IEP). Base 2010
 July 2017. *Provisional data*

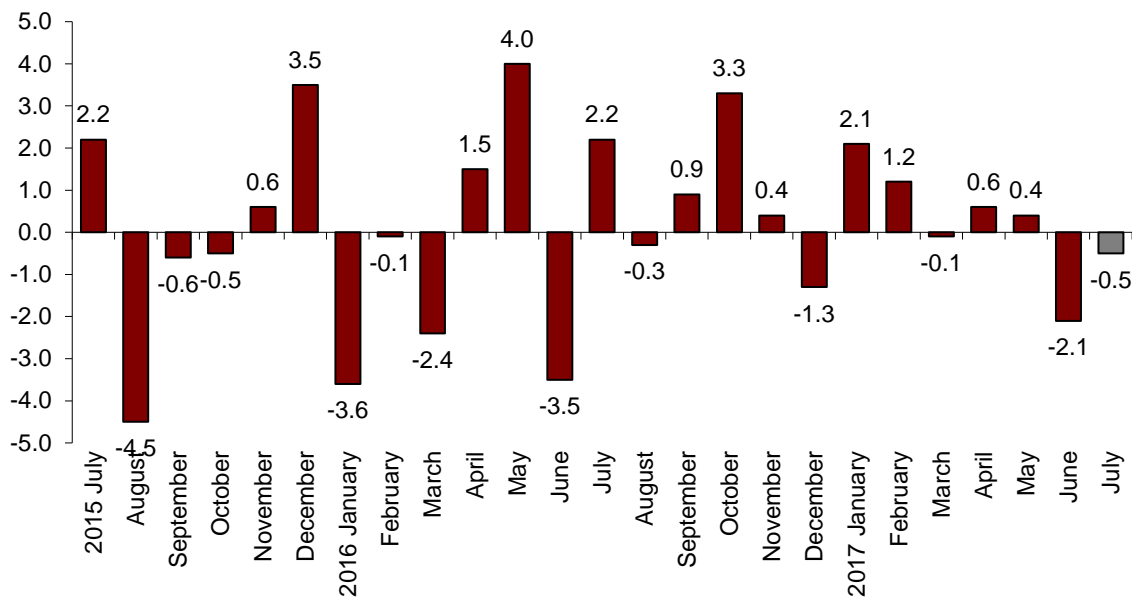
The monthly variation of the General Industrial New Orders Received Index¹ is -0.5% after adjusting for seasonal and calendar effects

The annual rate stands at 4.6% in the series adjusted for seasonal and calendar effects, and at 4.4% in the original series

Monthly evolution of Industry New Order Entry

The monthly variation of the Industrial New Orders Received Index between July and June stood at -0.5%, after adjusting for the seasonal and calendar effects. This rate was 1.6 points higher than that registered in the previous month.

New Orders Received General Index
 Adjusted for seasonal and calendar effects. Monthly rate

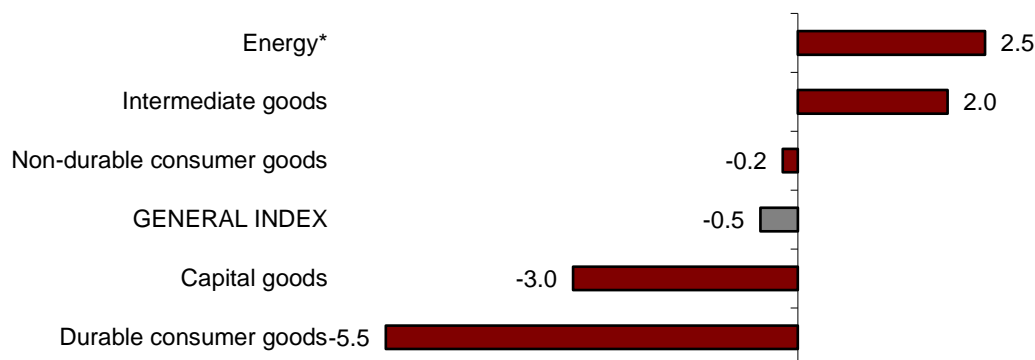


¹ As reflected in the methodology of this rate of value, the information is presented in current terms (nominal terms), this is, without adjusting the effects in the price variation of it.

By economic destination of the goods, *Energy* (2.5%) and *Intermediate goods* (2.0%) registered positive monthly rates.

Conversely, *Durable consumer goods* (-5.5%), *Capital goods* (-3.0%) and *Non-durable consumer goods* (-0.2%) registered negative monthly rates.

**New Orders Received indices: General and by economic destination
Adjusted for seasonal and calendar effects. Monthly rate**



* Except supply of electrical energy, gas, steam, air conditioning and water

A more detailed analysis shows the branches of activity with the greatest and lowest monthly rates in the month of July.

**Branches of activity with the highest monthly rates of the Industry New Orders Received Index,
Adjusted for seasonal and calendar effects.**

Branch of activity (Section of the CNAE 2009)	Monthly rate (%)
Manufacture of computer, electronic and optical products	12.9
Leather and footwear industry	5.0
Manufacture of other non-metallic ore products	3.8

**Branches of activity with the lowest monthly rates of the Industry New Orders Received Index,
Adjusted for seasonal and calendar effects.**

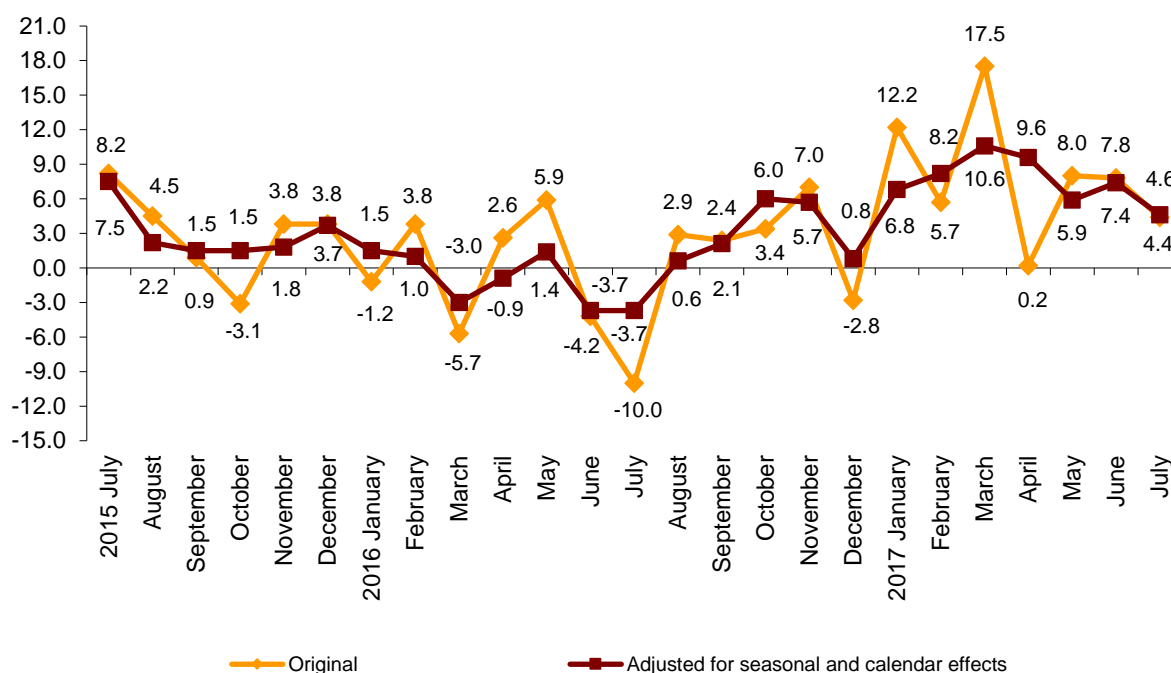
Branch of activity (Section of the CNAE 2009)	Monthly rate (%)
Manufacture of other transport material	-11.3
Manufacture of machinery and equipment n.e.c.	-6.7
Manufacture of furniture	-5.0

Annual evolution of the order entries

The Industry New Order Received Index (INORI) adjusted for seasonal and calendar effects, registered a variation of 4.6% in July, when compared with the same month of the previous year. This rate is 2.8 points lower than that registered in June.

The original series of the INORI registered an annual variation of 4.4%. This rate is 3.4 points lower than that registered in June.

Industry New Orders Received General Index Annual rates



By economic destination of the goods, three out of five sectors analysed recorded positive annual rates, after adjusting for seasonal and calendar effects.

Energy registered the greatest increase (13.6%), while *Durable consumer goods* recorded the greatest decrease (-8.3%).

Annual rates of indices of the New Orders Received: General and by economic destination of the goods

	Original index	Index adjusted for seasonal and calendar effects
	Annual rate (%)	Annual rate (%)
GENERAL INDEX	4.4	4.6
1. Consumer goods	2.9	4.2
1.1. Durable consumer goods	-8.4	-8.3
1.2. Non-durable consumer goods	3.8	3.6
2. Capital goods	-4.2	-3.9
3. Intermediate goods	11.1	10.9
4. Energy*	13.2	13.6

* Except supply of electrical energy, gas, steam, air conditioning and water.

Annual evolution of order entries by market. Original series

By geographical destination of the sales, in July, all the markets recorded positive annual rates. Worth noting was the 8.3% increase in the domestic market.

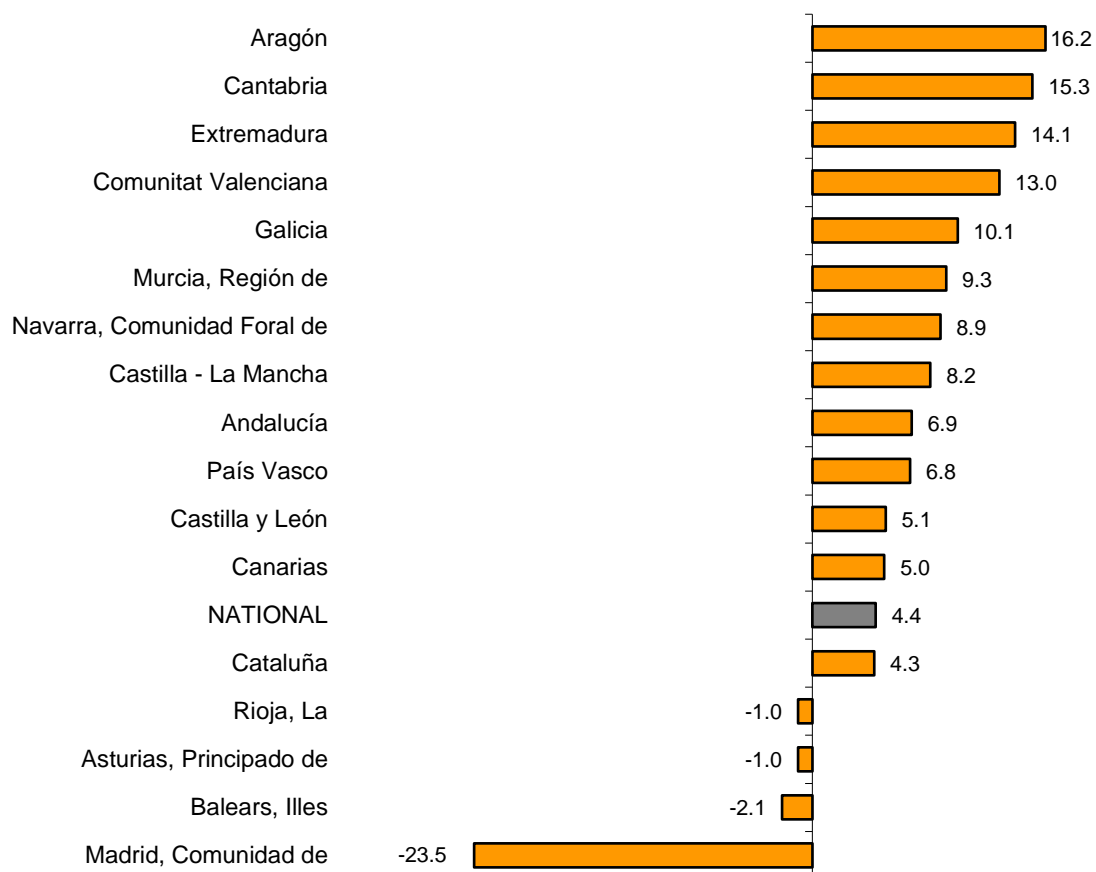
Industrial new orders received indices: General and by market Annual rate



Results by autonomous communities. Annual variation rate of the order entries. Original series

New orders received increased in 13 Autonomous Communities and decreased in the remaining four as compared to July 2016. The greatest increase was recorded in Aragón (16.2%) and the greatest decrease was registered in Comunidad de Madrid (-23.5%).

General indices: National and by Autonomous Community Annual rate and average rate of Industry New Orders Received



Industrial New Orders Received Index. Base 2010

July 2017

Provisional data

1. New Orders Received indices¹ Adjusted for seasonal and calendar effects

	Index	Rate (%)		
		Monthly	Annual	Year-to-date average
GENERAL INDEX	110.8	-0.5	4.6	7.5
1. Consumer goods	109.2	0.0	4.2	5.3
1.1. Durable consumer goods	73.1	-5.5	-8.3	2.5
1.2. Non-durable consumer goods	111.7	-0.2	3.6	5.1
2. Capital goods	127.0	-3.0	-3.9	2.9
3. Intermediate goods	104.6	2.0	10.9	9.1
4. Energy*	103.0	2.5	13.6	31.0

¹ Regulation (EC) no. 656/2007 of the Commission of 14 June 2007.

* Except supply of electrical energy, gas, steam, air conditioning and water.

2. New Orders Received indices¹ Adjusted for calendar effects

	Index	Rate (%)	
		Annual	Year-to-date average
GENERAL INDEX	115.4	4.1	7.6
1. Consumer goods	114.8	2.5	5.4
1.1. Durable consumer goods	82.0	-8.6	2.6
1.2. Non-durable consumer goods	118.5	3.4	5.1
2. Capital goods	128.7	-4.4	2.8
3. Intermediate goods	109.3	10.9	9.2
4. Energy*	108.8	13.2	30.2

¹ Regulation (EC) no. 656/2007 of the Commission of 14 June 2007.

* Except supply of electrical energy, gas, steam, air conditioning and water.

3. New Orders Received indices: General and by activities Originals series

	Index	Rate (%)		Effect
		Annual	Year-to-date average	Annual
GENERAL INDEX	111.4	4.4	7.9	
1. CONSUMER GOODS	110.4	2.9	5.6	0.918
1.1. Durable consumer goods	78.8	-8.4	3.4	-0.193
- Manufacture of consumer electronics, optical instruments and photographic equipment	9.9	0.0	2.5	0.000
- Manufacture of household appliances	70.6	-1.8	0.7	-0.009
- Manufacture of motorcycles, bicycles, vehicles for the disabled and others	35.1	16.4	15.8	0.009
- Manufacture of furniture	102.0	-11.7	4.5	-0.187
- Manufacture of jewellery, costume jewellery and musical instruments	90.3	-4.1	-1.2	-0.006
1.2. Non-durable consumer goods	113.7	3.8	5.8	1.111
- Food industries (except grain mill products and food for animals)	123.1	7.0	7.8	1.135
- Manufacture of beverages	121.2	-1.1	3.9	-0.043
- Manufacture of tobacco	34.8	15.1	-35.6	0.010
- Manufacture of knitted fabrics, carpets, rope, non-woven fabrics, textile products for technical use and industrial and other textile products	109.8	0.3	3.2	0.002
- Manufacture of garments	88.7	-1.3	4.6	-0.014
- Leather and footwear industry	109.1	4.2	2.9	0.035
- Graphic arts and reproduction of recorded media	58.7	-9.8	0.6	-0.097
- Manufacture of cleaning articles, perfumes and cosmetics	116.9	10.2	8.1	0.146
- Manufacture of pharmaceutical products	106.5	-1.2	1.9	-0.040
- Manufacture of sporting goods; games and toys and Other manufacturing industries	109.2	-5.7	5.6	-0.024
2. CAPITAL GOODS	124.6	-4.2	3.3	-1.187
- Manufacture of metal products for construction, containers made of metal, steam generators, weapons and ammunition	69.3	-6.8	7.3	-0.140
- Manufacture of computers, peripherals and telecommunications equipment; appliances for measuring and navigation; radiation and medical and therapeutic equipment	93.7	-2.9	-4.7	-0.021
- Manufacture of machinery and equipment n.e.c.	126.0	6.2	16.0	0.258
- Manufacture of motor vehicles, trailers and semi-trailers	141.7	12.1	2.6	1.632
- Naval, railway, aircraft and spacecraft construction. Combat vehicles	126.2	-49.8	-9.0	-3.095
- Manufacture of medical and dental instruments and supplies	111.7	2.5	3.2	0.009
- Repair and installation of machinery and equipment	116.8	11.4	11.6	0.171
3. INTERMEDIATE GOODS	104.7	11.1	9.7	3.679
- Other mining and quarrying	87.1	14.4	9.9	0.085
- Manufacture of grain mill products, starches, and food for animals	122.0	6.8	3.6	0.184
- Preparation and spinning of textile fibres. Manufacture of woven textiles. Textile finishings	96.7	-0.5	2.7	-0.002
- Wood and cork industry	106.2	12.5	11.8	0.163
- Paper industry	109.4	7.2	4.7	0.190
- Chemical industry except cleaning articles, perfumes and cosmetics	106.8	10.1	11.9	0.593
- Rubber and plastic material transformation industry	109.3	10.2	6.7	0.382
- Manufacture of other non-metallic ore products	93.2	9.9	8.4	0.362
- Metallurgy; manufacture of iron, steel and ferro-alloy products	97.7	17.8	16.4	0.912
- Forging, stamping, embossing and rolling of metals. - Manufacture of tools, hardware goods, containers and other metal products	121.0	13.0	9.4	0.559
- Manufacture of electronic components, assembled printed circuits, and magnetic and optical media	52.4	8.2	16.0	0.012
- Manufacture of electrical material and equipment except household appliances	96.8	9.6	8.6	0.240
4. ENERGY*	108.0	13.2	30.3	0.942
- Extraction of anthracite, coal and lignite	35.9	55.0	35.8	..
- Extraction of crude oil, petroleum and natural gas
- Manufacture of coke and refined petroleum products	109.4	13.1	30.3	0.928

* Except supply of electrical energy, gas, steam, air conditioning and water.

(..) Data not available due to statistical secrecy.

4. New Orders Received indices: General and by branch of activity Originals series

	Index	Rate (%)		Effect
		Annual	Year-to-date average	Annual
GENERAL INDEX	111.4	4.4	7.9	
B. Mining and quarrying industries	79.6	15.5	11.7	0.099
Extraction of anthracite, coal and lignite	35.9	55.0	35.8	..
Extraction of crude oil, petroleum and natural gas
Other mining and quarrying	87.1	14.4	9.9	0.085
C. Manufacturing industry	111.8	4.3	7.9	4.253
Food industry	122.9	7.0	7.2	1.319
Manufacture of beverages	121.2	-1.1	3.9	-0.043
Manufacture of tobacco	34.8	15.1	-35.6	0.010
Textile industry	104.0	0.0	3.0	0.000
Manufacture of garments	88.7	-1.3	4.6	-0.014
Leather and footwear industry	109.1	4.2	2.9	0.035
Manufacture of wood and of products of wood and cork, except furniture; basketmaking and wickerwork	106.2	12.5	11.8	0.163
Paper industry	109.4	7.2	4.7	0.190
Graphic arts and reproduction of recorded media	58.7	-9.8	0.6	-0.097
Manufacture of coke and refined petroleum products	109.4	13.1	30.3	0.928
Chemical industry	108.6	10.2	11.2	0.739
Manufacture of pharmaceutical products	106.5	-1.2	1.9	-0.040
Rubber and plastic material transformation industry	109.3	10.2	6.7	0.382
Manufacture of other non-metallic ore products	93.2	9.9	8.4	0.362
Metallurgy; manufacture of iron, steel and ferro-alloy products	97.7	17.8	16.4	0.912
Manufacture of metal products, except machinery and equipment	100.0	6.6	8.7	0.419
Manufacture of computer, electronic and optical products	66.2	-1.0	-1.4	-0.009
Manufacture of electrical material and equipment	91.7	7.7	7.3	0.231
Manufacture of machinery and equipment n.e.c.	126.0	6.2	16.0	0.258
Manufacture of motor vehicles, trailers and semi-trailers	141.7	12.1	2.6	1.632
Manufacture of other transport material	120.3	-49.3	-8.7	-3.087
Manufacture of furniture	102.0	-11.7	4.5	-0.187
Other manufacturing industries	106.8	-2.3	3.5	-0.021
Repair and installation of machinery and equipment	116.8	11.4	11.6	0.171

(..) Data not available due to statistical secrecy.

5. New Orders Received indices: General and by markets Originals series

	Index	Rate (%)	
		Annual	Year-to-date average
GENERAL INDEX	111.4	4.4	7.9
1. Domestic market	99.3	8.3	10.0
2. Foreign market	131.1	1.4	4.8
2.1. Foreign market, euro zone	125.5	2.9	7.3
2.2. Foreign market, non euro zone	144.2	3.2	-0.9

6. New Orders Received indices: National and by Autonomous Community

Originals series

	Index	Rate (%)	
		Annual	Year-to-date average
NATIONAL	111.4	4.4	7.9
Andalucía	109.9	6.9	15.8
Aragón	125.2	16.2	5.9
Asturias, Principado de	95.8	-1.0	12.0
Balears, Illes	80.4	-2.1	5.1
Canarias	57.4	5.0	3.5
Cantabria	92.9	15.3	10.0
Castilla y León	119.8	5.1	2.9
Castilla - La Mancha	107.7	8.2	12.2
Cataluña	113.7	4.3	7.8
Comunitat Valenciana	131.0	13.0	8.8
Extremadura	120.5	14.1	10.6
Galicia	105.4	10.1	9.1
Madrid, Comunidad de	102.6	-23.5	0.4
Murcia, Región de	143.7	9.3	16.5
Navarra, Comunidad Foral de	73.6	8.9	7.5
País Vasco	105.8	6.8	4.2
Rioja, La	102.3	-1.0	-0.3

For further information see **INEbase** - www.ine.es/en/ All press releases at: www.ine.es/en/prensa/prensa_en.htm

Press Office: Telephone numbers: 91 583 93 63 / 94 08 – Fax: 91 583 90 87 - gprensa@ine.es

Information Area: Telephone number: 91 583 91 00 – Fax: 91 583 91 58 – www.ine.es/infoine