

**Industrial Turnover Indices (ITI). Base 2005**  
**Industrial New Orders Received Indices (INORI). Base 2005**  
June 2011. *Provisional data*

**Main results**

- The annual rate of the **Industrial Turnover Index** stands at **5.1%** in the month of June, three-and-a-half points lower than that registered in May.
- By economic destination of the goods, **all sectors register positive interannual rates, except Durable consumer goods.**
- The **variation of the average** Turnover is **7.8%** in the first half of the year.
- The annual variation rate of **New Orders Received** in the month of June is **4.9%**, almost four points lower than in May.
- The **average rate** of the General Industrial New Orders Received Index stands at **8.4%** in the first six months of the year.

**Evolution of Industrial Turnover**

The Industrial Turnover Index (ITI) experienced an interannual variation of **5.1%** in June, three-and-a-half points lower than that registered in May.

By economic destination of the goods, the industrial sectors that presented the greatest positive effects on the general index were:

- **Energy**, with an annual variation of **54.0%** and an effect of **3.525** on the general index, as a result of the increase shown in the activity *Manufacture of coke and refined petroleum products*.
- **Intermediate goods**, with an annual rate of **4.7%** and an effect of **1.751** on the general index. Turnover increased in more than half of the activities in this sector, with the rise in *Manufacture of grain mill products, starches and starch products and of prepared animal feeds* being of note. Of note among the decreases were *Manufacture of electronic components, assembled printed circuits, and magnetic and optical media*.

On the other hand, the sector **Durable consumer goods** was the only one to have a negative influence on the general index, with an annual variation of **-19.5%** and an effect of **-0.593** as a result of the negative evolution in almost all activities comprising this sector. Among these drops, worth highlighting was *Manufacture of consumer electronics, optical instruments and photographic equipment*.

### Details of the interannual variations

A more detailed analysis showed the activities that had the greatest effect on the annual rate of the ITI for the month of June.

#### Activities with the greatest positive effect on the annual rate of the general index of the ITI

Activity (Basic aggregate of the ITI)	Annual rate (%)	Effect
Manufacture of coke and refined petroleum products	54.2	3.468
Manufacture of motor vehicles, trailers and semi-trailers	5.6	0.705
Chemical industry except cleaning articles, perfumes and cosmetics	10.9	0.635
Food industries (except grain mill products and food for animals)	4.1	0.585
Manufacture of grain mill products, starches and starch products, and of animal feeds	21.9	0.529

#### Activities with the greatest negative effect on the annual rate of the general index of the ITI

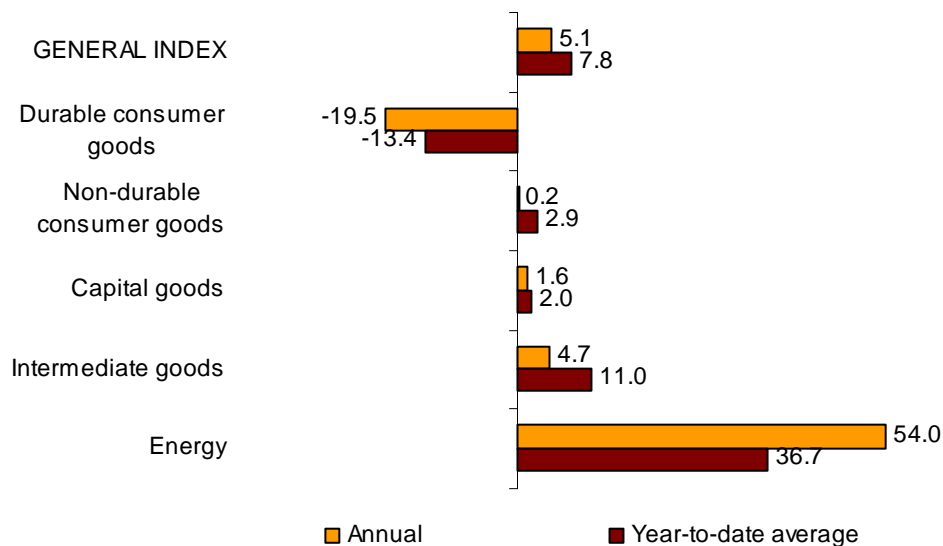
Activity (Basic aggregate of the ITI)	Annual rate (%)	Effect
Manufacture of other non-metallic ore products	-12.5	-0.623
Manufacture of furniture	-21.2	-0.354
Manufacture of pharmaceutical products	-6.8	-0.269
Repair and installation of machinery and equipment	-8.2	-0.123
Manufacture of electronic components, assembled printed circuits, and magnetic and optical media	-32.7	-0.120

### Year-to-date average rates

The average for the Industrial Production Index registered a variation rate of **7.8%** in the first six months of the year, as compared with the same period the previous year.

By economic destination of the goods, this rate was positive in Energy (36.7%), Intermediate goods (11.0%), Non-durable consumer goods (2.9%) and Capital goods (2.0%). In contrast, it was negative in Durable consumer goods (-13.4%).

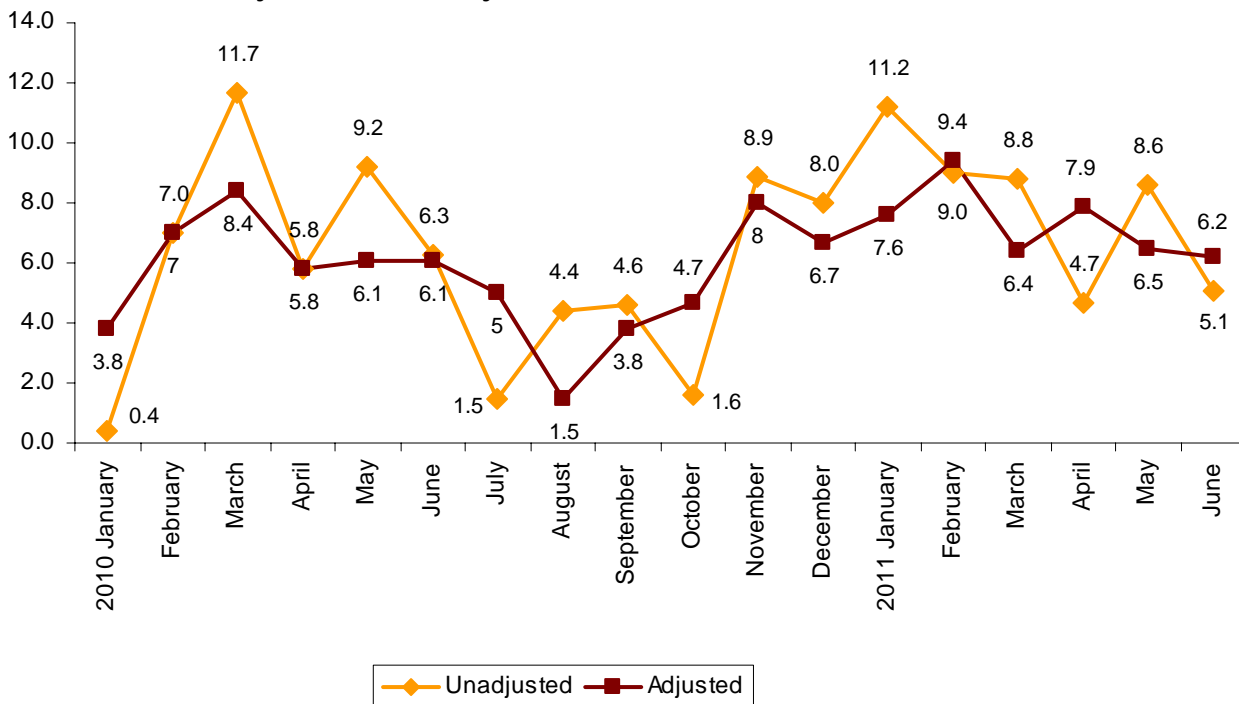
**Annual rates and the average of ITI  
General index and by economic destination of the goods**



**Evolution of the ITI, adjusted for the calendar effect**

After eliminating the calendar effect, that is, the difference between the number of working days in a given month in different years, the interannual variation of the ITI in the month of June was 6.2%, three points lower than that registered in May.

**Annual evolution of the ITI  
General Index, adjusted and unadjusted**



## Evolution of Industrial New Orders Received

The Industrial New Orders Received Index (INORI) experienced an interannual variation of **4.9%** in June, almost four points lower than that registered in May.

By economic destination of the goods, the industrial sectors that presented the greatest positive effects on the general index were:

- **Energy**, with an annual variation of **54.0%** and an effect of **3,623** on the general index, as a result of the increases in new orders received in all activities in this sector. Among them, worth highlighting were the increases registered in *Manufacture of coke and refined petroleum products*, and in *Extraction of anthracite, coal and lignite*.

- **Intermediate goods**, with an annual rate of **2.1%** and an effect of **0.824**. The majority of the activities in this sector registered a positive variation in new orders received, with *Manufacture of grain mill products, starches and starch products, and of animal feeds* worth noting.

On the other hand, the sector **Durable consumer goods** was the only one to have a negative influence on the general index, with an annual variation of **-15.4%** and an effect of **-0.468** as a result of the negative evolution in almost all activities comprising this sector. Among these drops, worth highlighting was *Manufacture of consumer electronics, optical instruments and photographic equipment*.

## Details of the interannual variations

A more detailed analysis showed the activities that most affected the annual rate of the INORI in the month of June.

### Activities with the greatest positive effect on the annual rate of the general index of the INORI

Activity (Basic aggregate of the INORI)	Annual rate (%)	Effect
Manufacture of coke and refined petroleum products	54.1	3.573
Manufacture of motor vehicles, trailers and semi-trailers	9.6	1.054
Food industries (except grain mill products and food for animals)	5.7	0.842
Chemical industry except cleaning articles, perfumes and cosmetics	9.7	0.613
Manufacture of grain mill products, starches and starch products, and animal feed	23.5	0.570

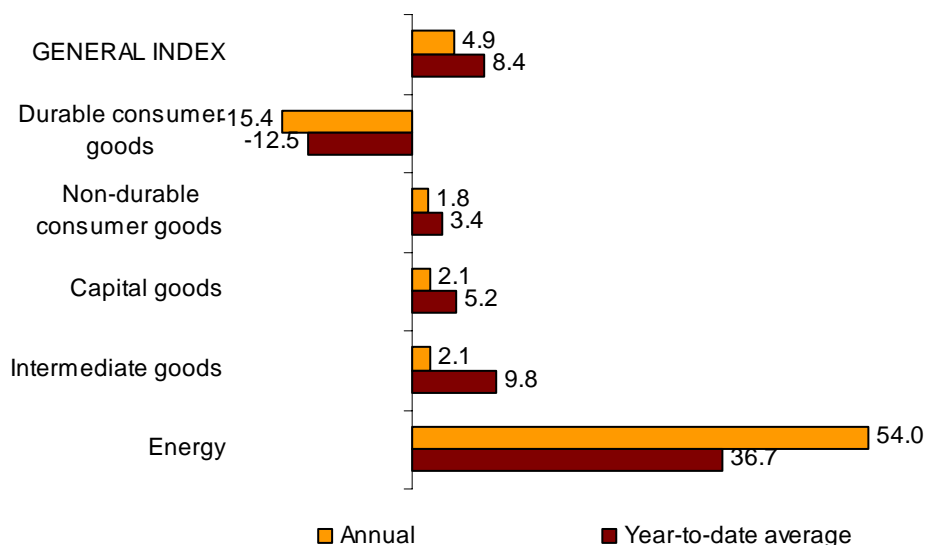
### Activities with the greatest negative effect on the annual rate of the general index of the INORI

Activity (Basic aggregate of the INORI)	Annual rate (%)	Effect
Manufacture of other non-metallic ore products	-12.3	-0.622
Repair and installation of machinery and equipment	-23.2	-0.415
Manufacture of metal products for construction, containers made of metal, steam generators, weapons and ammunition	-11.6	-0.383

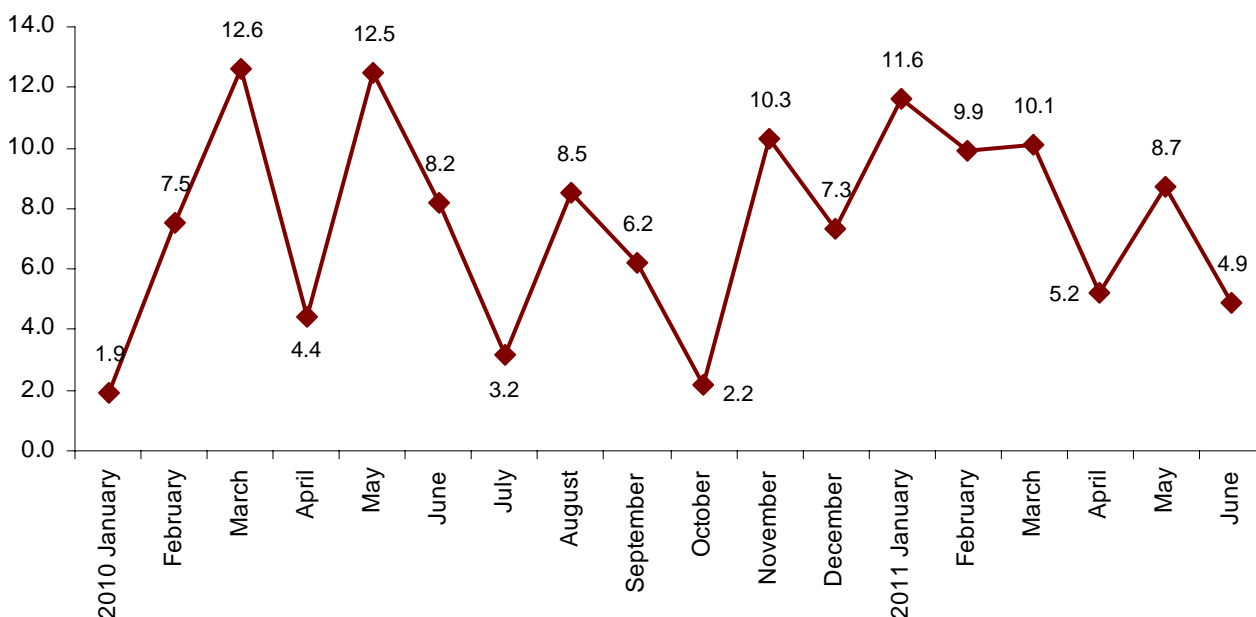
**Year-to-date average rates**

The average rate of the General Industrial New Orders Received Index during the first six months of the year presented a variation of **8.4%** as compared with the same period last year. By economic destination of the goods, this variation rate was positive in all of the industrial sectors except in Durable consumer goods.

**Annual rates and the average of INORI**  
**General index and by economic destination of the goods**



**Annual evolution of the INORI**



## Industry Turnover Indices and Industrial New Orders Received Indices Base 2005

Provisional data

### 1. Industrial turnover indices by economic destination<sup>1</sup>

	Index	% variation		Effect
		Annual	Year-to-date average	Annual
<b>GENERAL INDEX</b>	<b>104.4</b>	<b>5.1</b>	<b>7.8</b>	
<b>1. CONSUMER GOODS</b>	<b>101.6</b>	<b>-1.7</b>	<b>1.4</b>	<b>-0.531</b>
<b>1.1. DURABLE CONSUMER GOODS</b>	<b>57.3</b>	<b>-19.5</b>	<b>-13.4</b>	<b>-0.593</b>
- Manufacture of consumer electronics, optical instruments and photographic equipment	13.2	-57.6	-65.3	-0.112
- Manufacture of household appliances	67.7	-10.0	-6.1	-0.076
- Manufacture of motorcycles, bicycles, vehicles for the disabled and others	51.0	-23.6	-23.7	-0.054
- Manufacture of furniture	62.3	-21.2	-7.6	-0.354
- Manufacture of jewellery, costume jewellery and musical instruments	104.0	1.6	-1.4	0.003
<b>1.2. NON-DURABLE CONSUMER GOODS</b>	<b>108.8</b>	<b>0.2</b>	<b>2.9</b>	<b>0.062</b>
- Food industries (except grain mill products and food for animals)	116.0	4.1	4.8	0.585
- Manufacture of beverages	114.0	-2.1	1.6	-0.083
- Manufacture of tobacco	58.3	-30.5	-20.3	-0.068
- Manufacture of knitted fabrics, carpets, rope, non-woven fabrics, textile products for technical use and industrial and other textile products	77.8	-10.1	2.4	-0.071
- Manufacture of garments	69.8	4.6	-1.8	0.051
- Leather and footwear industry	85.4	5.4	10.8	0.041
- Graphic arts and reproduction of recorded media	73.9	-6.8	-3.9	-0.099
- Manufacture of cleaning articles, perfumes and cosmetics	100.5	-1.6	2.8	-0.022
- Manufacture of pharmaceutical products	145.8	-6.8	1.0	-0.269
- Manufacture of sporting goods; games and toys and Other manufacturing industries	105.9	-1.1	4.6	-0.004
<b>2. CAPITAL GOODS</b>	<b>104.2</b>	<b>1.6</b>	<b>2.0</b>	<b>0.399</b>
- Manufacture of metal products for construction, containers made of metal, steam generators, weapons and ammunition	74.0	-1.8	-4.0	-0.051
- Manufacture of computers, peripherals and telecommunications equipment; appliances for measuring and navigation; radiation and medical and therapeutic equipment	74.2	-2.1	-9.4	-0.015
- Manufacture of machinery and equipment n.e.c.	93.5	-0.7	9.4	-0.025
- Manufacture of motor vehicles, trailers and semi-trailers	105.6	5.6	8.3	0.705
- Naval, railway, aircraft and spacecraft construction. Combat vehicles	203.6	-2.5	-17.4	-0.081
- Manufacture of medical and dental instruments and supplies	107.0	-7.1	-2.6	-0.011
- Repair and installation of machinery and equipment	110.9	-8.2	-8.8	-0.123
<b>3. INTERMEDIATE GOODS</b>	<b>101.2</b>	<b>4.7</b>	<b>11.0</b>	<b>1.751</b>
- Other mining and quarrying	101.0	-1.4	1.4	-0.012
- Manufacture of grain mill products, starches, and food for animals	138.2	21.9	23.9	0.529
- Preparation and spinning of textile fibres. Manufacture of woven textiles. Textile finishings	62.6	-3.3	6.7	-0.018
- Wood and cork industry	64.7	-5.7	-1.7	-0.082
- Paper industry	114.0	2.8	8.7	0.076
- Chemical industry except cleaning articles, perfumes and cosmetics	115.6	10.9	16.9	0.635
- Rubber and plastic material transformation industry	109.0	6.4	11.0	0.283
- Manufacture of other non-metallic ore products	63.1	-12.5	-5.4	-0.623
- Metallurgy; manufacture of iron, steel and ferro-alloy products	117.1	7.8	19.7	0.479
- Forging, stamping, embossing and rolling of metals. - Manufacture of tools, hardware goods, containers and other metal products	107.7	8.4	15.0	0.396
- Manufacture of electronic components, assembled printed circuits, and magnetic and optical media	77.6	-32.7	-22.5	-0.120
- Manufacture of electrical material and equipment except household appliances	113.8	6.5	6.0	0.209
<b>4. ENERGY (Except supply of electrical energy, gas, steam, air conditioning)</b>	<b>131.8</b>	<b>54.0</b>	<b>36.7</b>	<b>3.525</b>
- Extraction of anthracite, coal and lignite	96.6	49.2	16.3	..
- Extraction of crude oil, petroleum and natural gas	..	..	..	..
- Manufacture of coke and refined petroleum products	132.8	54.2	37.1	3.468

<sup>1</sup> Regulation (EC) no. 656/2007 of the European Commission

(..) Data not available due to statistical secrecy.

## 2. Industrial turnover indices adjusted by calendar effects

	Original	% variation		Adjusted	% variation	
	index	Annual	Year-to-date average	index	Annual	Year-to-date average
<b>General index</b>	<b>104.4</b>	<b>5.1</b>	<b>7.8</b>	<b>103.0</b>	<b>6.2</b>	<b>7.3</b>
1. Consumer goods	101.6	-1.7	1.4	100.5	-0.8	0.9
1.1. Durable consumer goods	57.3	-19.5	-13.4	56.3	-18.6	-13.9
1.2. Non-durable consumer goods	108.8	0.2	2.9	107.8	1.1	2.4
2. Capital goods	104.2	1.6	2.0	102.8	2.6	1.5
3. Intermediate goods	101.2	4.7	11.0	99.8	5.7	10.3
4. Energy*	131.8	54.0	36.7	131.3	54.4	36.5

\*Except supply of electrical energy, gas, steam, air conditioning

### 3. Interannual rates

#### Industrial turnover indices by economic destination

Period	General index		Consumer goods		Durable consumer goods		Non-durable consumer goods	
	Original	Adjusted <sup>1</sup>	Original	Adjusted <sup>1</sup>	Original	Adjusted <sup>1</sup>	Original	Adjusted <sup>1</sup>
2010 June *	6.3	6.1	3.4	3.2	11.7	11.5	2.6	2.4
July	1.5	5.0	-2.9	0.4	-4.3	-0.3	-2.7	0.4
August	4.4	1.5	3.8	1.0	6.0	2.5	3.7	1.0
September	4.6	3.8	1.2	0.5	0.4	-0.6	1.3	0.6
October *	1.6	4.7	-1.0	2.0	-7.5	-4.0	-0.4	2.5
November	8.9	8.0	6.0	5.2	-0.9	-1.9	6.8	6.0
December *	8.0	6.7	0.8	-0.4	-7.2	-8.6	1.7	0.4
2011 January *	11.2	7.6	2.6	-0.8	-7.0	-10.8	3.5	0.3
February *	9.0	9.4	0.4	0.8	-13.8	-13.4	2.0	2.3
March *	8.8	6.4	1.1	-1.1	-9.8	-12.2	2.2	0.1
April *	4.7	7.9	1.0	4.1	-17.6	-14.5	2.9	5.9
May *	8.6	6.5	5.1	3.1	-11.0	-13.1	6.9	4.9
June	5.1	6.2	-1.7	-0.8	-19.5	-18.6	0.2	1.1

Period	Capital goods		Intermediate goods		Energy	
	Original	Adjusted <sup>1</sup>	Original	Adjusted <sup>1</sup>	Original	Adjusted <sup>1</sup>
2010 June *	3.2	3.1	12.2	12.0	-0.1	-0.1
July	-5.4	-2.1	6.8	10.6	20.5	21.5
August	-12.6	-15.0	12.2	9.1	10.7	10.0
September	-3.8	-4.6	9.6	8.7	27.2	27.0
October *	-5.6	-2.6	6.4	9.7	15.5	16.3
November	1.5	0.6	14.5	13.5	20.3	20.1
December *	4.6	3.3	12.5	11.0	31.7	31.3
2011 January *	2.8	-0.6	18.9	14.8	33.8	32.7
February *	-0.5	-0.2	15.8	16.2	44.2	44.3
March *	3.8	1.4	13.5	10.9	34.4	33.7
April *	-0.6	2.5	4.1	7.4	35.5	36.4
May *	4.7	2.7	10.8	8.5	22.5	21.9
June	1.6	2.6	4.7	5.7	54.0	54.4

<sup>1</sup> Index rates adjusted for calendar effects

\* Data revised

#### 4. Industrial Turnover Indices by branch of activity(CNAE 2009)

	Index	% variation		Effect
		Annual	Year-to-date average	Annual
<b>GENERAL INDEX</b>	<b>104.4</b>	<b>5.1</b>	<b>7.8</b>	
<b>B. Mining and quarrying industries</b>	99.7	4.6	3.2	0.046
Extraction of anthracite, coal and lignite	96.6	49.2	16.3	..
Extraction of crude oil, petroleum and natural gas	..	..	..	..
Other mining and quarrying	101.0	-1.4	1.4	-0.012
<b>C. Manufacturing industry</b>	104.4	5.2	7.9	5.100
Food industry	119.1	6.6	7.6	1.114
Manufacture of beverages	114.0	-2.1	1.6	-0.083
Manufacture of tobacco	58.3	-30.5	-20.3	-0.068
Textile industry	70.1	-7.1	4.3	-0.089
Manufacture of garments	69.8	4.6	-1.8	0.051
Leather and footwear industry	85.4	5.4	10.8	0.041
Manufacture of wood and of products of wood and cork, except furniture; basketmaking and wickerwork	64.7	-5.7	-1.7	-0.082
Paper industry	114.0	2.8	8.7	0.076
Graphic arts and reproduction of recorded media	73.9	-6.8	-3.9	-0.099
Manufacture of coke and refined petroleum products	132.8	54.2	37.1	3.468
Chemical industry	112.7	8.6	14.3	0.613
Manufacture of pharmaceutical products	145.8	-6.8	1.0	-0.269
Rubber and plastic material transformation industry	109.0	6.4	11.0	0.283
Manufacture of other non-metallic ore products	63.1	-12.5	-5.4	-0.623
Metallurgy; manufacture of iron, steel and ferro-alloy products	117.1	7.8	19.7	0.479
Manufacture of metal products, except machinery and equipment	92.9	4.6	8.0	0.346
Manufacture of computer, electronic and optical products	54.2	-19.8	-23.7	-0.247
Manufacture of electrical material and equipment	102.2	3.4	3.7	0.133
Manufacture of machinery and equipment n.e.c.	93.5	-0.7	9.4	-0.025
Manufacture of motor vehicles, trailers and semi-trailers	105.6	5.6	8.3	0.705
Manufacture of other transport material	176.2	-3.9	-17.8	-0.135
Manufacture of furniture	62.3	-21.2	-7.6	-0.354
Other manufacturing industries	105.6	-1.6	1.4	-0.012
Repair and installation of machinery and equipment	110.9	-8.2	-8.8	-0.123

(..) Data not available due to statistical secrecy.

## 5. Industrial New Orders Received Indices by economic destination<sup>1</sup>

	Index	% variation		Effect Annual
		Annual	Year-to-date average	
<b>GENERAL INDEX</b>	<b>100.9</b>	<b>4.9</b>	<b>8.4</b>	
<b>1. CONSUMER GOODS</b>	<b>103.2</b>	<b>0.2</b>	<b>1.9</b>	<b>0.059</b>
<b>1.1. DURABLE CONSUMER GOODS</b>	<b>58.3</b>	<b>-15.4</b>	<b>-12.5</b>	<b>-0.468</b>
- Manufacture of consumer electronics, optical instruments and photographic equipment	13.8	-57.0	-65.3	-0.118
- Manufacture of household appliances	70.3	-3.9	-5.2	-0.029
- Manufacture of motorcycles, bicycles, vehicles for the disabled and others	48.6	-7.7	-21.2	-0.014
- Manufacture of furniture	63.9	-17.5	-6.0	-0.295
- Manufacture of jewellery, costume jewellery and musical instruments	98.2	-5.6	-3.3	-0.011
<b>1.2. NON-DURABLE CONSUMER GOODS</b>	<b>110.5</b>	<b>1.8</b>	<b>3.4</b>	<b>0.527</b>
- Food industries (except grain mill products and food for animals)	116.7	5.7	6.2	0.842
- Manufacture of beverages	128.5	0.3	2.2	0.015
- Manufacture of tobacco	58.3	-30.5	-20.3	-0.070
- Manufacture of knitted fabrics, carpets, rope, non-woven fabrics, textile products for technical use and industrial and other textile products	75.6	-9.4	0.6	-0.066
- Manufacture of garments	69.8	-4.2	-3.9	-0.054
- Leather and footwear industry	84.2	16.8	8.2	0.118
- Graphic arts and reproduction of recorded media	64.9	-3.0	-4.5	-0.038
- Manufacture of cleaning articles, perfumes and cosmetics	107.8	0.6	2.3	0.009
- Manufacture of pharmaceutical products	142.8	-6.6	1.6	-0.263
- Manufacture of sporting goods; games and toys and Other manufacturing industries	116.8	7.3	3.9	0.032
<b>2. CAPITAL GOODS</b>	<b>88.7</b>	<b>2.1</b>	<b>5.2</b>	<b>0.441</b>
- Manufacture of metal products for construction, containers made of metal, steam generators, weapons and ammunition	75.6	-11.6	-5.0	-0.383
- Manufacture of computers, peripherals and telecommunications equipment; appliances for measuring and navigation; radiation and medical and therapeutic equipment	79.3	0.7	-10.5	0.005
- Manufacture of machinery and equipment n.e.c.	96.5	12.0	6.0	0.401
- Manufacture of motor vehicles, trailers and semi-trailers	92.3	9.6	7.9	1.054
- Naval, railway, aircraft and spacecraft construction. Combat vehicles	61.2	-17.4	23.0	-0.207
- Manufacture of medical and dental instruments and supplies	103.8	-8.8	-3.1	-0.013
- Repair and installation of machinery and equipment	106.9	-23.2	-2.1	-0.415
<b>3. INTERMEDIATE GOODS</b>	<b>100.6</b>	<b>2.1</b>	<b>9.8</b>	<b>0.824</b>
- Other mining and quarrying	102.5	-1.2	1.5	-0.011
- Manufacture of grain mill products, starches, and food for animals	136.0	23.5	25.0	0.570
- Preparation and spinning of textile fibres. Manufacture of woven textiles. Textile finishings	62.5	-4.3	4.2	-0.024
- Wood and cork industry	65.6	-4.0	-1.1	-0.059
- Paper industry	116.4	3.4	8.3	0.095
- Chemical industry except cleaning articles, perfumes and cosmetics	120.1	9.7	15.2	0.613
- Rubber and plastic material transformation industry	109.0	-2.5	8.9	-0.124
- Manufacture of other non-metallic ore products	62.1	-12.3	-5.4	-0.622
- Metallurgy; manufacture of iron, steel and ferro-alloy products	112.8	2.2	15.9	0.140
- Forging, stamping, embossing and rolling of metals. - Manufacture of tools, hardware goods, containers and other metal products	107.2	4.7	12.4	0.238
- Manufacture of electronic components, assembled printed circuits, and magnetic and optical media	92.1	1.6	-4.5	0.005
- Manufacture of electrical material and equipment except household appliances	104.9	0.1	5.3	0.003
<b>4. ENERGY (Except supply of electrical energy, gas, steam, air conditioning)</b>	<b>131.3</b>	<b>54.0</b>	<b>36.7</b>	<b>3.623</b>
- Extraction of anthracite, coal and lignite	75.0	55.6	21.0	..
- Extraction of crude oil, petroleum and natural gas	..	..	..	..
- Manufacture of coke and refined petroleum products	132.8	54.1	37.1	3.573

<sup>1</sup> Regulation (EC) no. 656/2007 of the European Commission

(..) Data not available due to statistical secrecy.

## 6. Interannual rates

### Industrial New Orders Received Indices by economic destination

Period	General index	Consumer goods	Durable consumer goods	Non-durable consumer goods
2010 June *	8.2	2.1	6.8	1.6
July	3.2	-2.1	-5.0	-1.8
August *	8.5	4.6	2.9	4.7
September *	6.2	0.6	-5.2	1.2
October *	2.2	0.0	-5.4	0.5
November *	10.3	7.6	-3.0	8.7
December *	7.3	1.9	-7.5	2.8
2011 January *	11.6	0.8	-6.0	1.5
February *	9.9	3.2	-10.4	4.6
March *	10.1	1.0	-12.3	2.4
April *	5.2	1.2	-18.5	3.3
May *	8.7	5.3	-11.1	7.0
June	4.9	0.2	-15.4	1.8

Period	Capital goods	Intermediate goods	Energy
2010 June *	11.0	13.9	-0.1
July	-0.2	6.7	21.1
August *	6.6	13.1	10.6
September *	0.3	11.1	27.4
October *	-4.7	5.8	14.8
November *	3.7	14.6	20.5
December *	-4.3	16.0	31.6
2011 January *	8.1	18.6	33.7
February *	-3.6	17.1	44.6
March *	14.0	10.6	34.5
April *	3.4	2.8	35.8
May *	6.5	9.7	22.3
June	2.1	2.1	54.0

\* Data revised

## 7. Industrial New Orders Received Indices by branch of activity (CNAE 2009)

	Index	% variation		Effect
		Annual	Year-to-date average	Annual
<b>GENERAL INDEX</b>	<b>100.9</b>	<b>4.9</b>	<b>8.4</b>	
<b>B. Mining and quarrying industries</b>	<b>97.2</b>	<b>4.0</b>	<b>3.4</b>	<b>0.040</b>
Extraction of anthracite, coal and lignite	75.0	55.6	21.0	..
Extraction of crude oil, petroleum and natural gas	..	..	..	..
Other mining and quarrying	102.5	-1.2	1.5	-0.011
<b>C. Manufacturing industry</b>	<b>100.9</b>	<b>5.0</b>	<b>8.4</b>	<b>4.906</b>
Food industry	119.4	8.2	9.0	1.412
Manufacture of beverages	128.5	0.3	2.2	0.015
Manufacture of tobacco	58.3	-30.5	-20.3	-0.070
Textile industry	69.0	-7.2	2.2	-0.091
Manufacture of garments	69.8	-4.2	-3.9	-0.054
Leather and footwear industry	84.2	16.8	8.2	0.118
Manufacture of wood and of products of wood and cork, except furniture; basketmaking and wickerwork	65.6	-4.0	-1.1	-0.059
Paper industry	116.4	3.4	8.3	0.095
graphic arts and reproduction of recorded media	64.9	-3.0	-4.5	-0.038
Manufacture of coke and refined petroleum products	132.8	54.1	37.1	3.573
Chemical industry	117.7	8.0	12.8	0.623
Manufacture of pharmaceutical products	142.8	-6.6	1.6	-0.263
Rubber and plastic material transformation industry	109.0	-2.5	8.9	-0.124
Manufacture of other non-metallic ore products	62.1	-12.3	-5.4	-0.622
Metallurgy; manufacture of iron, steel and ferro-alloy products	112.8	2.2	15.9	0.140
Manufacture of metal products, except machinery and equipment	93.4	-1.7	5.8	-0.145
Manufacture of computer, electronic and optical products	59.4	-8.7	-21.4	-0.108
Manufacture of electrical material and equipment	96.2	-0.7	3.3	-0.026
Manufacture of machinery and equipment n.e.c.	96.5	12.0	6.0	0.401
Manufacture of motor vehicles, trailers and semi-trailers	92.3	9.6	7.9	1.054
Manufacture of other transport material	59.0	-16.1	13.2	-0.222
Manufacture of furniture	63.9	-17.5	-6.0	-0.295
Other manufacturing industries	109.5	0.9	0.6	0.007
Repair and installation of machinery and equipment	106.9	-23.2	-2.1	-0.415

(..) Data not available due to statistical secrecy.