

28 February 2014

**Non-Hotel Tourist Accommodation Occupancy Survey**  
January 2014. *Provisional data*

**Overnight stays in non-hotel tourist accommodation increased 7.7% in January, as compared with the same month of 2013**

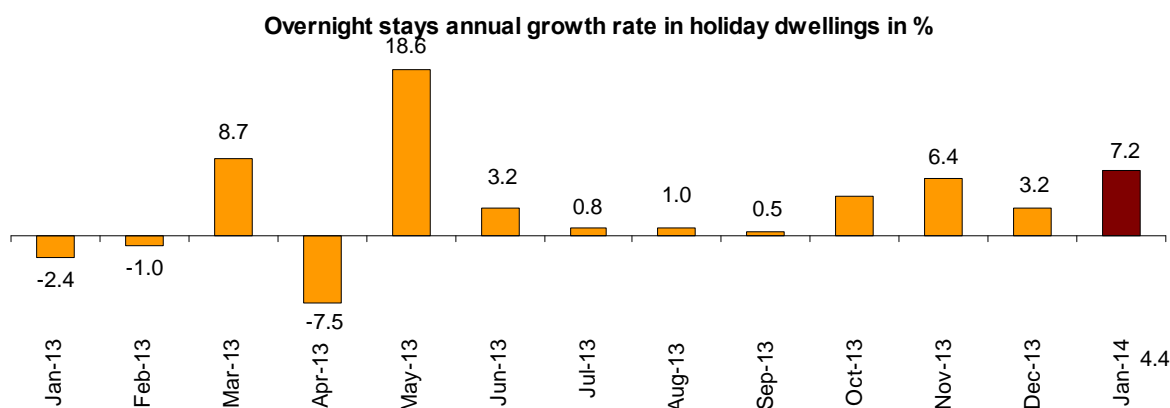
Overnight stays in non-hotel tourist accommodation (holiday dwellings, campsites and rural tourism accommodation) exceeded 4.9 millions in January, 7.7% more than in the same month of 2013. Overnight stays by resident travellers increased 4.7% and those of non-residents increased 8.3%. The average stay remains the same, standing at 8.0 overnights per traveller.

Travellers and overnight stays in collective non-hotel tourist accommodation during the month of January were:

January 2014	Travellers	Overnight stays
Residents in Spain	230,908	790,200
EU (not including Spain)	323,447	3,560,203
Rest of the world	68,221	626,054
<b>TOTAL</b>	<b>622,576</b>	<b>4,976,457</b>

**Holiday Dwellings**

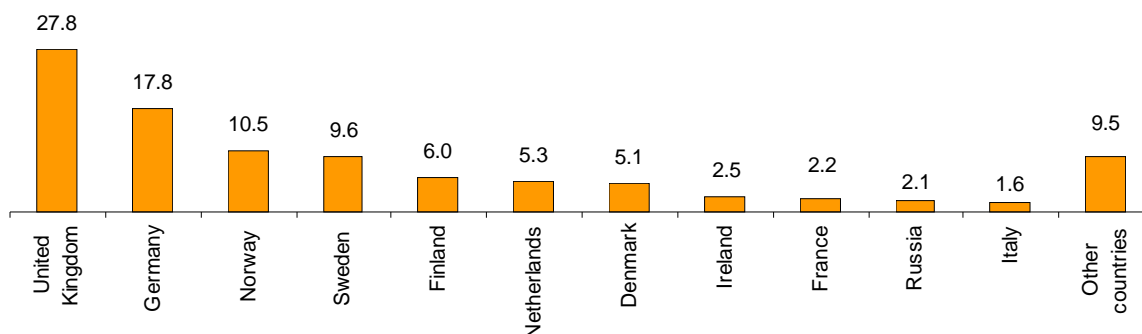
Overnight stays in holiday dwellings increased 7.2% in January. Overnight stays of residents increased 5.2% and overnight stays of non-residents increased 7.5%. The average stay increased 1.4% standing at 8.9 overnight stays per traveller.



In January, 35.4% of the bedplaces available for holiday dwellings were occupied, 7.9% more than in the same month of 2013. The weekend occupancy rate by bedplaces stood at 36.6%, with an annual increase of 9.4%.

Non-resident overnight stays in holiday dwellings represented 87.9% of the total. The United Kingdom was the main country of origin, with more than 944,678 overnight stays, 4.8% more than in January 2013. The following country of origin was Germany, with 605,217 overnight stays, 6.6% more.

**Distribution of overnight stays of residents abroad of the 11 main countries by origin**



Canarias was the preferred holiday dwelling destination, with more than 2.9 million overnight stays, 4.8% more than in January 2013. Canarias registered the highest occupancy rate with 83.2% of the dwellings offered.

By tourist area, the island of Gran Canaria was the preferred destination, with more than one million overnight stays. The island of Tenerife reached the highest occupancy rate with 86.4% of the dwellings offered.

The tourist sites with the greatest number of overnight stays were San Bartolomé de Tirajana, Arona and Mogán.

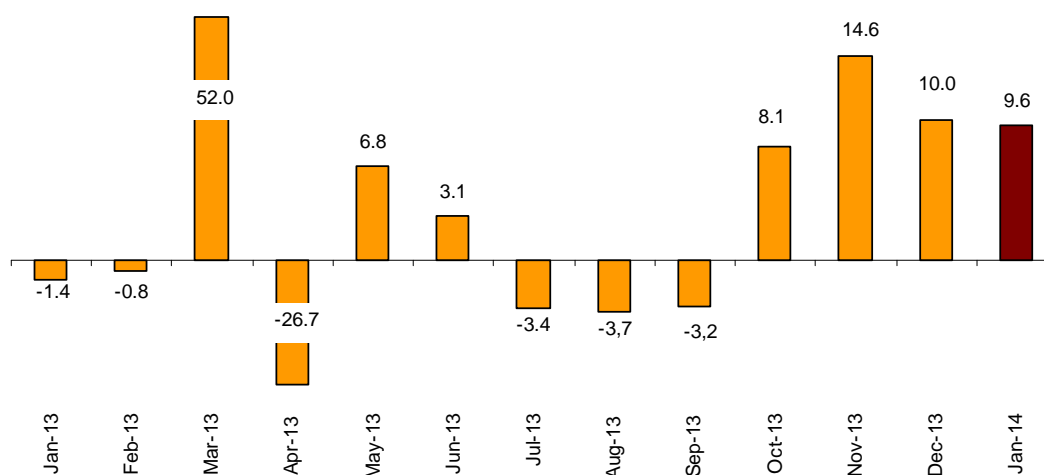
## Campsites

The overnight stays in tourist campsites registered an annual increase of 9.6% in January. Overnight stays by resident travellers decreased 1.9%, whereas those of non-resident travellers increased 12.3%.

During the month of January, 35.3% of the offered pitches were occupied, 4.2% more. The weekend occupancy rate by pitch reached 36.0%, with an annual increase of 2.5%.

83.0% of the overnight stays in tourist campsites were by non-residents. The United Kingdom was the main country of origin, with 33.2% of the overnight stays by non-residents, 6.3% more than in January 2013.

Overnight stays annual growth rate in campsites in %



Comunitat Valenciana was the preferred destination regarding campsites, with 472,256 overnight stays, 15.3% more than in January 2013. La Rioja reached the highest occupancy rate on campsites, with 61.1% of the pitches offered.

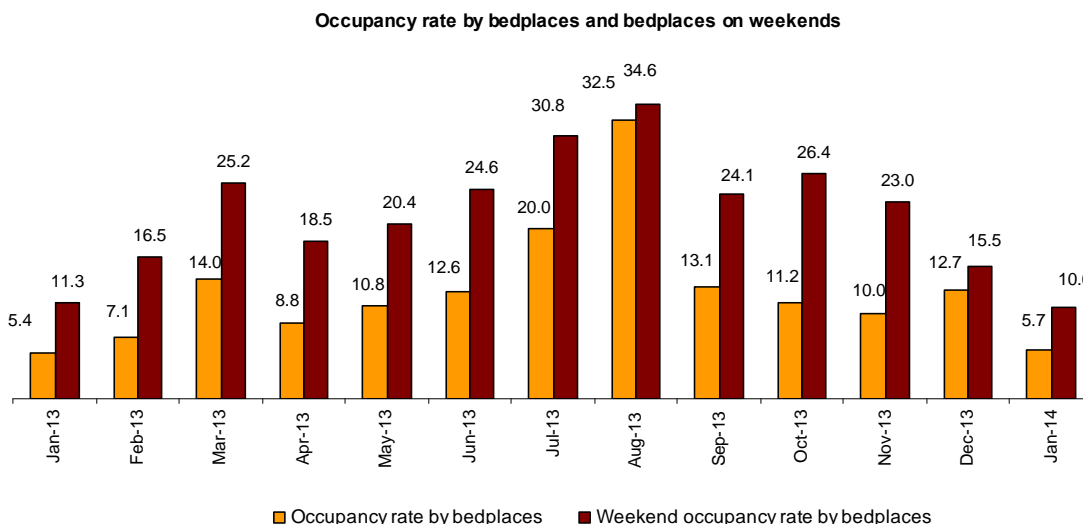
By tourist area, Costa Blanca was the preferred destination for camping, with 266,323 overnight stays and an occupancy rate of 71.8% of the pitches offered.

The tourist sites with the highest number of overnight stays were Benidorm, Cartagena and Marbella.

### Rural Tourism Accommodation

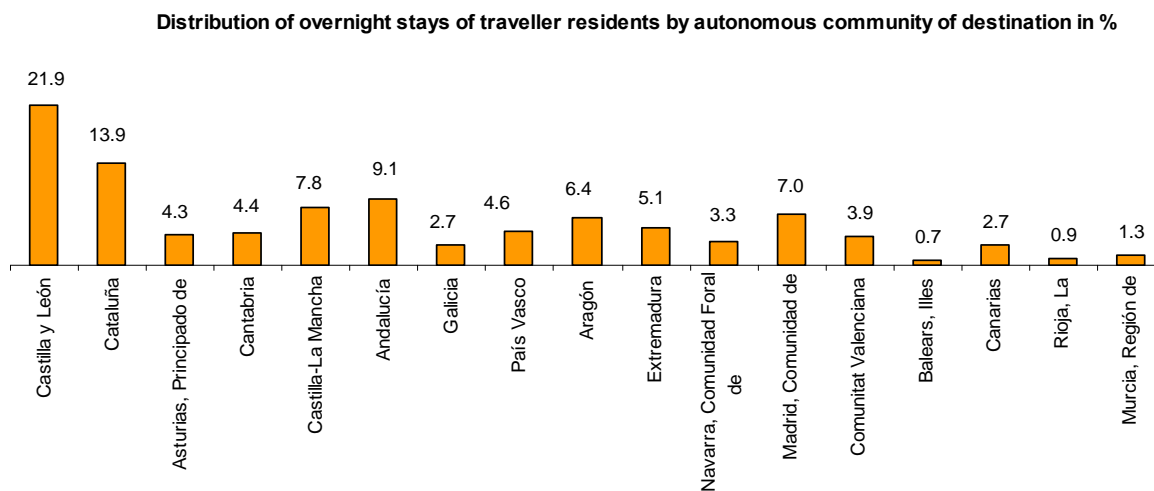
Overnight stays in rural tourism accommodation presented an annual increase of 8.6% in January. Residents' overnight stays increased 9.9% while those of non-residents increased 4.5%.

5.7% of the bedplaces in rural tourism accommodation were occupied, representing a 5.6% increase as compared to January 2013. The weekend occupancy rate stood at 10.6%, with a decrease of 5.5%.



By Autonomous Community, Castilla y León was the preferred destination, with 44,775 overnight stays, 8.3% more than in January 2013. Canarias reached the highest occupancy rate as well, with 29.0% of the offered bedplaces.

By tourist area, the island of Tenerife was the main destination, with 13,228 overnight stays and an occupancy rate of 38.8%.



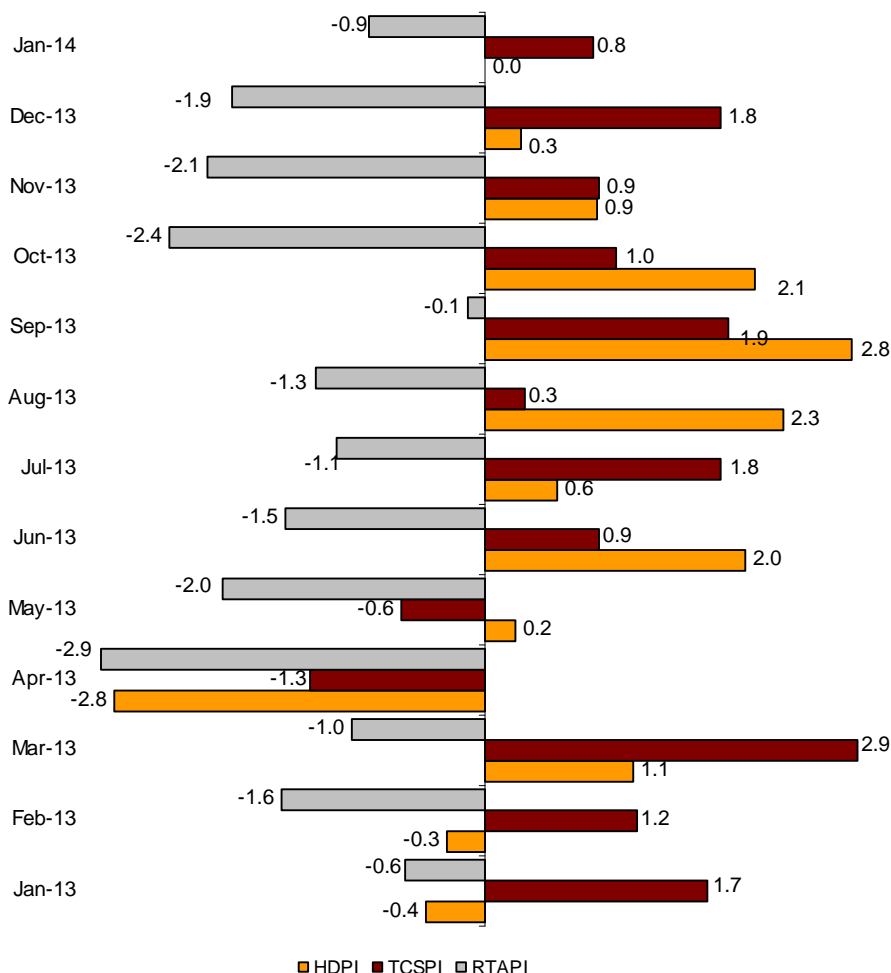
**Price Indices**

The Holiday Dwelling Price Index (HDPI) remained unchanged, as compared to January 2013. The tour operators and travel agencies rate, which carried the greatest weight in the weighting structure for this month (62.2%), increased 0.7%.

The Tourist Campsite Price Index (TCPI) increased 0.8% in the annual rate. The normal rate, which had the greatest weight in the weighting structure for January (49.2%), increased by 1.0%.

The Rural Tourism Accommodation Price Index (RTAPI) registered a 0.9% decrease in January. The weekend rate, which accounted for 64.7% of the total weight, decreased 0.9%.

**Price Indices. Annual variation rates**



**Evolution of travellers and overnight stays in all Spanish collective tourist accommodation**

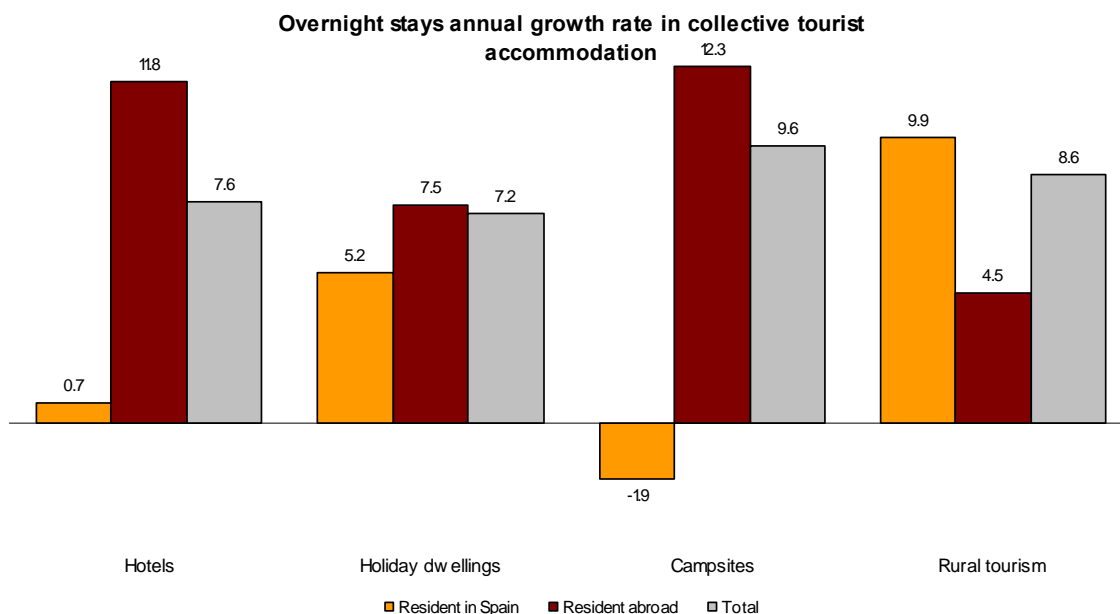
Overnight stays in Spanish collective tourist accommodation (hotels, holiday dwellings, campsites and rural tourism accommodation) registered a 7.7% increase in January, as compared with the same month of the previous year. Overnight stays of residents increased 1.3%, whereas those of non-residents increased 10.6%.

The average stay increased 0.9% as compared to January 2013, standing at 3.9 overnight stays per traveller.

Travellers and overnight stays in collective tourist accommodation were:

January 2014	Holiday dwellings	Campsites	Rural T.	Non-hotel	Hotels	Total
<b>Travellers</b>	436,743	94,163	91,669	622,575	3,934,347	4,556,922
Residents	97,340	51,436	82,132	230,908	2,176,853	2,407,761
Non-residents	339,404	42,727	9,537	391,668	1,757,494	2,149,162
<b>Overnight stays</b>	3,863,184	892,154	221,119	4,976,457	12,793,773	17,770,230
Residents	467,443	151,754	171,003	790,200	4,501,023	5,291,223
Non-residents	3,395,741	740,400	50,116	4,186,257	8,292,750	12,479,007

Of the total overnight stays in collective tourist accommodation, 72% were accounted for hotels, and 28% did so for non-hotel tourist accommodation.



The main countries of origin in overall regulated tourist accommodation were Germany (with 23.2% of the total number of non-resident overnight stays), the United Kingdom (23.1%) and The Netherlands (4.7%).

Canarias was the preferred destination regarding overall tourist accommodation, with more than 8.4 million overnight stays (8.9% more than in January 2013). Followed by Andalucía, with over 2.1 million overnight stays (12.3% more) and Cataluña, with over 1.8 million overnight stays (8.5% more).

For further information see [INEbase-www.ine.es/en/](http://INEbase-www.ine.es/en/) All press releases at: [www.ine.es/en/prensa/prensa\\_en.htm](http://www.ine.es/en/prensa/prensa_en.htm)

**Press Office:** Telephone numbers: 91 583 93 63 / 94 08 – Fax: 91 583 90 87 - [gprensa@ine.es](mailto:gprensa@ine.es)  
**Information Area:** Telephone number: 91 583 91 00 – Fax: 91 583 91 58 – [www.ine.es/infoine/?L=1](http://www.ine.es/infoine/?L=1)

## Tourist Accommodation Occupancy Survey (Holiday Dwellings)

January 2014 Provisional data

### 1. Travellers, overnight stays and average stay by Autonomous Cities and Communities

Autonomous Cities and Communities	Travellers			Overnight stays			Average stay
	Total	Residents in Spain	Residents abroad	Total	Residents in Spain	Residents abroad	
TOTAL	436,743	97,340	339,404	3,863,184	467,443	3,395,741	8.85
Andalucía	55,850	22,632	33,218	275,062	65,546	209,516	4.92
Aragón	9,008	8,381	627	29,419	26,560	2,859	3.27
Asturias, Principado de	390	383	7	1,111	1,048	62	2.85
Balears, Illes	1,901	562	1,339	17,063	2,724	14,339	8.98
Canarias	284,201	17,154	267,047	2,963,196	133,490	2,829,706	10.43
Cantabria	1,052	848	204	6,619	4,914	1,705	6.29
Castilla y León	3,153	2,807	346	9,760	8,570	1,189	3.10
Castilla - La Mancha	2,805	2,462	342	9,465	6,755	2,711	3.38
Cataluña	20,377	10,980	9,397	145,658	92,538	53,120	7.15
Comunitat Valenciana	30,171	11,892	18,278	266,858	46,686	220,172	8.84
Extremadura	695	597	97	1,513	1,389	124	2.18
Galicia	1,785	1,570	215	6,371	5,605	766	3.57
Madrid, Comunidad de	18,638	12,021	6,618	87,389	46,535	40,854	4.69
Murcia, Región de	2,070	1,145	926	25,072	11,328	13,744	12.11
Navarra, Comunidad Foral de	1,625	1,396	229	6,714	4,766	1,948	4.13
País Vasco	1,254	759	495	8,132	5,239	2,894	6.48
Rioja, La	1,768	1,749	19	3,782	3,751	31	2.14
Ceuta	-	-	-	-	-	-	-
Melilla	-	-	-	-	-	-	-
Annual rate	5.77	2.39	6.79	7.24	5.22	7.53	1.39
Cumulative annual rate	5.77	2.39	6.79	7.24	5.22	7.53	1.39

### 2. Capacity, occupancy and number of staff by Autonomous Cities and Communities

Autonomous Cities and Communities	Capacity		Level of occupancy				Employed personnel
	Estimated bedplaces	Estimated Holiday dwelling	Per bedplaces	Per bedplaces at weekend	Per Holiday dwelling	Per Holiday dwelling at weekend	
TOTAL	350,744	97,169	35.38	36.62	58.21	59.43	18,785
Andalucía	51,445	13,461	17.25	19.55	29.23	31.93	2,892
Aragón	6,300	1,479	15.03	22.61	22.36	30.72	440
Asturias, Principado de	2,126	544	1.68	2.41	4.07	5.51	140
Balears, Illes	2,837	715	19.29	20.29	37.29	38.69	256
Canarias	168,542	52,459	56.42	56.73	83.16	83.35	10,162
Cantabria	2,215	638	9.64	11.63	18.96	20.63	123
Castilla y León	4,596	974	6.78	11.13	15.30	21.79	361
Castilla - La Mancha	4,296	1,059	7.11	10.78	11.70	16.06	359
Cataluña	20,862	5,145	22.02	25.20	34.62	38.08	887
Comunitat Valenciana	64,594	13,740	13.32	14.03	27.40	28.25	1,750
Extremadura	1,281	314	3.81	6.35	6.23	10.22	125
Galicia	2,770	785	7.41	9.24	17.25	19.23	164
Madrid, Comunidad de	8,053	3,321	34.88	38.82	47.05	50.03	488
Murcia, Región de	6,468	1,527	12.50	12.86	25.33	25.80	203
Navarra, Comunidad Foral de	1,859	374	11.64	14.73	24.74	27.84	275
País Vasco	1,387	390	18.83	20.73	37.80	37.86	69
Rioja, La	1,113	244	10.94	21.01	16.03	28.71	91
Ceuta	-	-	-	-	-	-	-
Melilla	-	-	-	-	-	-	-
Annual rate	-0.75	-1.11	7.94	9.37	6.79	7.77	3.98
Cumulative annual rate	-0.75	-1.11	7.94	9.37	6.79	7.77	3.98

### 3. Travellers, overnight stays, capacity, occupancy, total number of staff with greater number of overnight stays \*

Provinces	Travellers		Overnight stays			Capacity		Level of occupancy			Employed personnel
	Residents in Spain	Residents abroad	Residents in Spain	Residents abroad	Average stay	Estimated bed-places	Estimated holiday dwelling	Per bed-places	Per Holiday dwelling	Per Holiday dwelling at weekend	
Palmas, Las	11,263	176,482	91,196	1,881,780	10.51	113,458	35,260	55.75	83.04	83.35	6,304
Santa Cruz de Tenerife	5,891	90,565	42,294	947,926	10.27	55,084	17,199	57.80	83.39	83.35	3,858
Alicante\Alacant	7,242	15,271	30,337	201,710	10.31	51,033	11,001	14.67	29.93	30.52	1,415
Málaga	6,452	23,510	21,631	174,087	6.53	30,936	7,798	20.47	35.94	37.09	1,903
Barcelona	3,674	7,814	70,928	43,916	10.00	8,094	2,444	44.59	58.62	61.43	410
Sevilla	5,660	5,283	18,488	16,853	3.23	4,347	1,487	26.08	37.41	44.19	274
Girona	5,562	1,306	16,604	8,043	3.59	7,891	1,707	10.08	17.07	21.28	299
Granada	5,923	2,284	15,658	8,285	2.92	4,104	1,143	18.72	25.27	34.57	289
Valencia\València	3,763	2,531	10,324	11,366	3.45	7,414	1,541	9.42	20.76	23.55	245
Huesca	4,792	114	15,387	307	3.20	3,501	793	14.41	18.22	28.23	249
Castellón\Castelló	887	476	6,025	7,095	9.62	6,147	1,198	6.89	12.76	13.45	90
Almería	959	575	2,934	5,591	5.56	4,484	1,127	6.13	12.11	12.36	70
Teruel	2,174	62	6,767	626	3.31	1,839	426	12.93	17.99	26.33	118
Zaragoza	1,415	450	4,407	1,926	3.40	960	261	21.28	42.12	45.46	73
Lleida	1,632	225	4,774	902	3.06	2,660	544	6.88	9.91	15.90	120

### 4. Travellers, overnight stays, capacity, occupancy, total number of staff from tourist areas with greater number of overnight stays

Tourist Areas	Travellers		Overnight stays			Capacity		Level of occupancy			Employed personnel
	Residents in Spain	Residents abroad	Residents in Spain	Residents abroad	Average stay	Estimated bed-places	Estimated holiday dwelling	Per bed-places	Per Holiday dwelling	Per Holiday dwelling at weekend	
Isla de Gran Canaria	3,877	88,767	41,466	993,398	11.17	57,626	18,288	57.57	84.89	85.20	2,963
Isla de Tenerife	4,132	84,231	31,390	880,949	10.32	49,129	15,147	59.71	86.36	86.38	3,397
Isla de Lanzarote	4,824	66,801	31,910	645,908	9.46	38,723	11,701	56.08	83.26	83.52	2,512
Isla de Fuerteventura	2,562	20,913	17,820	242,473	11.09	17,109	5,271	48.87	76.12	76.54	829
Costa Blanca	6,938	15,249	29,105	201,335	10.39	49,632	10,716	14.97	30.42	30.95	1,347
Costa del Sol	5,574	23,197	19,852	173,188	6.71	29,831	7,497	20.87	36.63	37.54	1,832
Catalunya Central	424	66	60,710	15,545	31.00	2,817	1,004	87.32	90.88	91.50	62
Isla de La Gomera	884	3,695	5,899	35,604	9.06	3,127	1,064	42.60	62.04	60.99	249
Isla de La Palma	800	2,540	4,800	30,908	10.69	2,482	881	46.41	67.46	67.79	189
Barcelona	2,715	7,520	7,998	27,134	3.43	3,463	950	32.71	49.61	55.43	288

### 5. Travellers, overnight stays, capacity, occupancy, total number of staff from tourist sites with greater number at overnights stays

Tourist sites	Travellers		Overnight stays			Capacity		Level of occupancy			Employed personnel
	Residents in Spain	Residents abroad	Residents in Spain	Residents abroad	Average stay	Estimated bed-places	Estimated holiday dwelling	Per bed-places	Per Holiday dwelling	Per Holiday dwelling at weekend	
San Bartolomé de Tirajana	1,593	52,524	13,855	589,164	11.14	36,539	11,531	52.94	83.48	83.54	1,805
Arona	793	38,431	7,143	393,155	10.21	21,541	6,707	59.86	84.13	83.86	1,414
Mogán	579	33,873	4,661	370,551	10.89	18,234	5,780	66.25	88.37	88.57	961
Tías	2,118	35,611	14,488	340,120	9.40	19,975	6,492	56.71	81.25	81.76	1,130
Adeje	918	21,735	5,904	242,387	10.96	14,121	3,999	56.64	87.57	87.69	950
Teguise	2,669	18,800	16,957	190,933	9.68	12,016	3,377	55.58	87.32	86.88	787
Puerto de la Cruz	1,695	9,803	15,145	119,247	11.69	6,502	2,530	66.21	89.32	89.86	468
Benidorm	2,827	8,516	15,471	114,909	11.49	18,393	4,527	22.86	42.01	42.87	685
Oliva (la)	1,530	8,907	11,873	83,743	9.16	5,902	1,746	52.09	80.29	81.55	301
Yaiza	213	8,896	1,356	84,439	9.42	4,980	1,304	55.47	83.99	84.83	322

\* Provinces belonging to uniprovincial Autonomous Communities have not been included because they are reflected in previous tables.



## 6. Travellers and overnight stays by countries of residence

Countries	Travellers		Overnight stays	
	Total	%	Total	%
TOTAL	436,743	100.00	3,863,184	100.00
Residents in Spain	97,340	22.29	467,443	12.10
Residents abroad	339,404	77.71	3,395,741	87.90
Total residents abroad	339,404	100.00	3,395,741	100.00
Total residents in E.U (excluding Spain)	274,995	81.02	2,801,453	82.50
- Germany	43,029	12.68	605,217	17.82
- Austria	1,760	0.52	24,372	0.72
- Belgium	4,195	1.24	43,095	1.27
-Denmark	18,598	5.48	171,776	5.06
- Finland	22,394	6.60	203,963	6.01
- France	10,017	2.95	74,488	2.19
- Greece	107	0.03	1,504	0.04
- Ireland	11,062	3.26	85,588	2.52
- Italy	7,754	2.28	55,784	1.64
- Luxembourg	935	0.28	9,712	0.29
- Netherlands	14,954	4.41	179,209	5.28
- Poland	1,995	0.59	13,288	0.39
- Portugal	1,627	0.48	7,872	0.23
- United Kingdom	93,398	27.52	944,678	27.82
- Czech Republic	615	0.18	6,368	0.19
- Sweden	36,682	10.81	325,819	9.59
- Other EU countries	5,872	1.73	48,721	1.43
Norway	30,160	8.89	355,684	10.47
Russia	8,931	2.63	70,689	2.08
Switzerland	2,579	0.76	27,753	0.82
Other european countries	2,889	0.85	22,477	0.66
United States of America	3,472	1.02	20,892	0.62
Rest of America	5,389	1.59	37,371	1.10
African countries	3,219	0.95	16,380	0.48
Other countries	7,769	2.29	43,042	1.27

**Tourist Accommodation Occupancy Survey  
Campsite Occupancy Survey (COS)  
January 2014**

Provisional data

**1. Travellers, overnight stays and average stay by category of establishment**

Category	Travellers			Overnight stays			Average stay
	Total	Residents in Spain	Residents abroad	Total	Residents in Spain	Residents abroad	
TOTAL	94,163	51,436	42,727	892,154	151,754	740,400	9.47
Luxury and first-class	41,089	20,774	20,315	391,936	65,866	326,070	9.54
Second-class	46,608	26,368	20,240	480,423	77,655	402,768	10.31
Third-class	6,467	4,294	2,172	19,795	8,233	11,562	3.06
Annual rate	10.74	3.58	20.80	9.59	-1.93	12.29	-1.04

**2. Open establishments, capacity, occupancy and number of staff by category of establishments**

Category	Estimated open establishments	Capacity		Occupied pitches	Occupancy rate per pitch	Weekend occupancy rate	Employed personnel
		Estimated bedplaces	Estimated pitches				
TOTAL	421	256,220	80,437	879,304	35.26	36.00	2,623
Luxury and first-class	119	108,936	33,858	357,897	34.10	33.79	1,250
Second-class	235	130,579	41,251	469,689	36.73	37.91	1,200
Third-class	67	16,704	5,329	51,717	31.31	34.98	174
Annual rate	-0.02	-0.07	0.07	4.25	4.17	2.51	5.79

**3. Travellers, overnight stays and average stay by Autonomous Cities and Communities**

Autonomous cities and communities	Travellers			Overnight stays			Average stay
	Total	Residents in Spain	Residents abroad	Total	Residents in Spain	Residents abroad	
TOTAL	94,163	51,436	42,727	892,154	151,754	740,400	9.47
Andalucía	18,657	5,847	12,810	174,568	22,912	151,656	9.36
Aragón	4,600	4,147	453	11,617	10,359	1,258	2.53
Asturias, Principado de	287	170	117	408	233	175	1.42
Balears, Illes	-	-	-	-	-	-	-
Canarias	1,243	918	325	8,257	2,417	5,840	6.64
Cantabria	222	222	-	592	592	-	2.67
Castilla y León	1,857	600	1,257	2,962	1,286	1,676	1.60
Castilla - La Mancha	675	571	104	1,213	1,067	146	1.80
Cataluña	23,125	17,884	5,241	67,269	42,271	24,998	2.91
Comunitat Valenciana	25,843	9,623	16,220	472,256	40,491	431,766	18.27
Extremadura	1,496	764	732	2,706	1,377	1,329	1.81
Galicia	150	142	9	215	201	14	1.43
Madrid, Comunidad de	6,104	4,957	1,147	15,555	13,032	2,522	2.55
Murcia, Región de	5,955	2,257	3,698	125,628	7,366	118,262	21.10
Navarra, Comunidad Foral de	1,960	1,700	260	4,808	4,542	266	2.45
País Vasco	570	328	242	1,169	808	361	2.05
Rioja, La	1,420	1,308	112	2,932	2,800	132	2.06
Ceuta	-	-	-	-	-	-	-
Melilla	-	-	-	-	-	-	-

#### 4. Open establishments, capacity, occupancy and number of staff by autonomous cities and communities

Autonomous cities and communities	Estimated open establishments	Capacity		Occupied pitches	Occupancy rate per pitch	Weekend occupancy rate	Employed personnel
		Estimated bedplaces	Estimated pitches				
TOTAL	421	256,220	80,437	879,304	35.26	36.00	2,623
Andalucía	99	53,899	16,833	135,034	25.88	27.51	584
Aragón	35	15,536	4,566	28,776	20.33	23.06	132
Asturias, Principado de	5	3,117	1,022	1,616	5.10	5.82	19
Balears, Illes	-	-	-	-	-	-	-
Canarias	5	3,524	1,318	6,982	17.09	17.56	24
Cantabria	5	2,632	841	13,671	52.46	52.46	11
Castilla y León	25	9,009	2,832	11,407	12.99	17.65	62
Castilla - La Mancha	11	3,332	930	6,726	23.33	15.95	27
Cataluña	68	47,520	14,689	131,885	28.96	31.24	443
Comunitat Valenciana	84	61,512	19,432	324,324	53.84	52.61	758
Extremadura	8	2,855	997	7,512	24.30	23.66	39
Galicia	17	4,828	1,524	1,685	3.57	4.25	54
Madrid, Comunidad de	19	17,390	5,825	80,031	44.32	43.87	170
Murcia, Región de	18	14,815	4,874	74,334	49.19	51.10	156
Navarra, Comunidad Foral de	10	6,115	1,594	13,980	28.29	25.85	81
País Vasco	7	4,399	1,403	8,024	18.45	23.88	26
Rioja, La	5	5,738	1,758	33,315	61.14	63.65	36
Ceuta	-	-	-	-	-	-	-
Melilla	-	-	-	-	-	-	-

#### 5. Travellers and overnight stays, average stay, capacity, occupancy and number of staff by provinces with the greatest number of overnight stays\*

Provinces	Travellers		Overnight stays		Average stay	Estimated open establishments	Estimated pitches	Occupancy rate per pitch	Employed personnel
	Residents in Spain	Residents abroad	Residents in Spain	Residents abroad					
	Spain		Spain						
Alicante\Alacant	2,265	8,909	17,437	302,176	28.60	32	8,960	66.45	389
Castellón\Castelló	2,810	5,351	11,642	95,463	13.12	29	5,717	42.95	207
Málaga	1,259	5,286	7,310	77,023	12.89	28	4,669	37.20	169
Valencia\València	4,547	1,960	11,412	34,127	7.00	23	4,754	43.16	162
Almería	745	1,938	6,721	36,836	16.24	18	2,493	35.23	95
Barcelona	6,087	2,386	14,739	14,128	3.41	16	5,175	24.55	149
Girona	5,565	1,963	11,573	8,679	2.69	22	3,657	32.09	116
Cádiz	471	2,146	1,470	18,000	7.44	14	3,223	21.98	119
Granada	1,277	1,837	2,459	14,925	5.58	21	2,428	15.99	102
Lleida	4,578	22	12,253	135	2.69	16	2,730	43.58	60
Huesca	2,461	31	6,434	572	2.81	22	3,283	24.25	82
Huelva	1,082	798	3,262	3,626	3.66	6	2,148	16.94	45
Tarragona	1,654	870	3,706	2,056	2.28	13	3,127	19.84	119
Teruel	1,267	-	2,422	36	1.94	10	994	5.60	23
Zaragoza	419	422	1,503	650	2.56	3	289	26.42	26

\* Provinces belonging to uniprovincial Autonomous Communities have not been included because they are reflected in previous tables.

**6. Travellers, overnight stays, average stay, open establishments, capacity, occupancy and number of staff from tourist areas with the greatest number of overnight stays**

Tourist areas	Travellers		Overnight stays		Average stay	Estimated open establishments	Estimated pitches	Occupancy rate per pitch	Employed personnel
	Residents in Spain	Residents abroad	Residents in Spain	Residents abroad					
	Costa Blanca	1,372	7,213	10,100					
Costa Cálida	1,117	3,114	3,832	108,074	26.45	9	3,774	54.63	119
Costa de Castellón	1,702	5,064	9,884	94,751	15.46	26	5,452	42.65	197
Costa del Sol	770	4,316	6,380	73,737	15.75	13	3,326	47.64	126
Costa de Almería	568	1,869	6,144	33,620	16.32	12	2,039	37.20	67
Costa Valencia	1,448	1,594	4,672	30,708	11.63	10	3,119	46.62	105
Pirineus	12,306	-	27,972	-	2.27	31	4,763	46.58	132
Costa Barcelona	1,754	2,377	5,257	14,107	4.69	5	3,801	15.07	95
Costa de la Luz (Cádiz)	320	2,018	945	17,687	7.97	10	2,615	22.61	101
Costa Tropical	294	1,040	1,063	12,143	9.90	7	1,047	28.58	41
Costa Brava	1,009	1,963	2,192	8,679	3.66	11	2,224	23.68	66
Pirineo Aragonés	2,414	31	6,385	572	2.85	19	3,081	24.18	77
P.N. Los Alcornocales	231	864	539	4,535	4.63	7	1,315	22.37	48
Costa de la Luz (Huelva)	515	690	2,233	2,106	3.60	3	1,624	10.72	25
Costa Daurada	1,529	412	3,164	706	1.99	8	2,281	25.07	89

**7. Travellers, overnight stays, average stay, open establishments, capacity, occupancy and number of staff from tourist sites with the greatest number at overnights stays**

Tourist sites	Travellers		Overnight stays		Average stay	Estimated open establishments	Estimated pitches	Occupancy rate per pitch	Employed personnel
	Residents in Spain	Residents abroad	Residents in Spain	Residents abroad					
	Benidorm	241	3,673	3,682					
Cartagena	197	1,740	1,321	63,334	31.00	3	2,537	42.09	70
Marbella	459	1,784	5,207	33,568	17.29	3	1,310	48.40	57
Mazarrón	270	1,174	1,435	37,156	26.73	3	874	82.56	34
Oliva	88	1,227	1,252	26,317	20.97	5	1,253	39.53	71
Cabanes	32	731	356	26,662	31.00	3	964	47.33	49
Peñíscola	686	1,996	1,998	23,565	9.53	8	1,287	41.13	44
Benicasim/Benicàssim	225	963	1,534	22,826	20.51	3	833	54.81	34
Vélez-Málaga	197	970	916	21,548	19.25	4	806	51.66	36
Campello, El	89	471	2,518	9,797	21.99	3	301	68.71	16
Motril	251	709	654	7,724	8.73	3	586	36.01	24
Fortuna	111	317	475	7,349	18.28	3	199	65.44	4

## 8. Travellers and overnight stays by countries of residence

Countries	Travellers		Overnight stays	
	Total	%	Total	%
TOTAL	94,163	100.00	892,154	100.00
Residents in Spain	51,436	54.62	151,754	17.01
Residents abroad	42,727	45.38	740,400	82.99
TOTAL residents abroad	42,727	100.00	740,400	100.00
TOTAL residents in E.U. (excluding Spain)	40,368	94.48	715,691	96.66
- Germany	9,182	21.49	214,658	28.99
- Austria	417	0.98	6,246	0.84
- Belgium	2,092	4.90	38,812	5.24
- Denmark	737	1.72	10,994	1.48
- Finland	347	0.81	8,687	1.17
- France	6,920	16.20	52,530	7.09
- Greece	21	0.05	29	0.00
- Ireland	239	0.56	3,814	0.52
- Italy	784	1.83	4,609	0.62
- Luxembourg	65	0.15	1,681	0.23
- Netherlands	6,224	14.57	102,465	13.84
- Poland	93	0.22	393	0.05
- Portugal	280	0.65	898	0.12
- United Kingdom	11,311	26.47	246,120	33.24
- Czech Republic	190	0.44	791	0.11
- Sweden	1,266	2.96	21,822	2.95
- Other EU countries	203	0.48	1,142	0.15
Norway	435	1.02	7,057	0.95
Russia	33	0.08	158	0.02
Switzerland	1,142	2.67	11,965	1.62
Other European countries	151	0.35	728	0.10
United States of America	61	0.14	303	0.04
Rest of America	202	0.47	1,615	0.22
African countries	-	-	27	0.00
Other countries	333	0.78	2,856	0.39

**Tourist accommodation occupancy survey  
(Rural tourist accommodation)**

January 2014

Provisional data

**1. Number of travellers, overnight stays and average stay by Autonomous City and Community**

Autonomous Communities	Number of travellers			Number of overnight stays			Average stay
	Total	Residents In Spain	Residents abroad	Total	Residents In Spain	Residents abroad	
<b>TOTAL<sup>1</sup></b>	<b>91,669</b>	<b>82,132</b>	<b>9,537</b>	<b>221,119</b>	<b>171,003</b>	<b>50,116</b>	<b>2.41</b>
Andalucía	7,797	6,647	1,151	22,744	15,604	7,140	2.92
Aragón	4,758	4,571	186	13,556	10,959	2,598	2.85
Asturias, Principado de	3,145	3,075	70	7,418	7,329	89	2.36
Balears, Illes	1,347	528	819	4,017	1,113	2,904	2.98
Canarias	5,762	1,332	4,431	32,613	4,623	27,990	5.66
Cantabria	3,883	3,769	113	7,771	7,458	313	2.00
Castilla y León	19,669	19,017	652	40,775	37,440	3,335	2.07
Castilla-La Mancha	6,640	6,393	247	14,712	13,405	1,307	2.22
Cataluña	12,053	11,312	741	25,166	23,752	1,414	2.09
Comunitat Valenciana	2,936	2,812	124	7,468	6,733	735	2.54
Extremadura	4,777	4,467	310	9,390	8,730	660	1.97
Galicia	2,800	2,677	123	4,855	4,687	169	1.73
Madrid, Comunidad de	7,854	7,640	215	12,441	11,948	493	1.58
Murcia, Región de <sup>1</sup>	1,322	1,260	61	2,433	2,285	148	1.84
Navarra, Comunidad Foral de	2,735	2,682	53	5,761	5,673	88	2.11
País Vasco	3,519	3,280	240	8,533	7,798	735	2.42
Rioja, La	671	671	-	1,466	1,466	-	2.19
Ceuta	-	-	-	-	-	-	-
Melilla	-	-	-	-	-	-	-
Annual rate	14.30	15.05	8.18	8.61	9.88	4.48	-4.97
Cumulative annual rate	14.30	15.05	8.18	8.61	9.88	4.48	-4.97

**2. Open rural establishments, bed-places, occupancy rates and employed personnel by Autonomous City and Community**

Autonomous Communities	Estimated open rural establishments	Estimated bed-places	Occupancy rate			Employed personnel
			Of bed-places	Of bed-places at weekend	Of bedrooms	
<b>TOTAL<sup>1</sup></b>	<b>13,958</b>	<b>125,971</b>	<b>5.65</b>	<b>10.63</b>	<b>7.74</b>	<b>19,271</b>
Andalucía	1,454	12,409	5.91	9.64	9.81	2,073
Aragón	1,118	8,711	5.01	10.13	6.01	1,258
Asturias, Principado de	1,070	10,122	2.36	4.36	4.29	1,450
Balears, Illes	64	1,083	11.92	16.91	14.46	239
Canarias	589	3,613	28.99	28.30	44.44	882
Cantabria	244	4,184	5.98	14.04	6.87	367
Castilla y León	3,178	27,031	4.86	10.15	6.19	4,483
Castilla-La Mancha	1,414	11,879	3.99	8.73	5.48	1,842
Cataluña	1,696	13,794	5.88	13.10	7.30	2,185
Comunitat Valenciana	927	8,773	2.74	5.23	6.05	1,324
Extremadura	503	5,904	5.13	11.94	6.78	731
Galicia	417	5,060	3.09	6.63	4.08	585
Madrid, Comunidad de	222	3,625	11.06	22.72	14.55	559
Murcia, Región de <sup>1</sup>	110	1,614	4.86	11.37	6.02	162
Navarra, Comunidad Foral de	529	3,793	4.90	12.73	5.95	618
País Vasco	334	3,513	7.82	10.95	9.68	409
Rioja, La	90	864	5.47	13.37	5.49	105
Ceuta	-	-	-	-	-	-
Melilla	-	-	-	-	-	-
Annual rate	1.88	2.78	5.62	-5.52	9.78	0.67
Cumulative annual rate	1.88	2.78	5.62	-5.52	9.78	0.67

### 3. Number of travellers, overnight stays and average stay in Provinces with the greatest number of overnight stays<sup>1</sup>

Provinces	Number of travellers			Number of overnight stays			Average stay
	Total	Residents In Spain	Residents abroad	Total	Residents In Spain	Residents abroad	
Santa Cruz de Tenerife	3,999	796	3,203	24,329	3,092	21,237	6.08
Ávila	4,658	4,597	61	10,307	10,170	137	2.21
Girona	4,984	4,692	292	9,053	8,478	575	1.82
Barcelona	3,648	3,460	188	8,696	8,420	276	2.38
Huesca	2,442	2,323	119	8,546	6,382	2,163	3.50
Málaga	1,189	799	390	8,316	4,183	4,133	6.99
Palmas, Las	1,763	535	1,228	8,284	1,531	6,753	4.70
Cáceres	4,024	3,753	271	8,142	7,541	601	2.02
Salamanca	3,083	2,925	158	7,785	6,406	1,379	2.53
Segovia	3,880	3,772	109	6,150	6,026	124	1.58
Lleida	2,778	2,548	230	6,126	5,656	470	2.21
Cuenca	1,583	1,567	16	4,578	3,901	677	2.89
Gipuzkoa	1,674	1,519	156	4,293	3,879	413	2.56
Albacete	1,683	1,681	2	4,058	4,054	4	2.41
Teruel	1,635	1,582	53	3,805	3,391	415	2.33

### 4. Open rural establishments, bed-places, occupancy rates and employed personnel in Provinces with the highest number of overnight stays<sup>1</sup>

Provinces	Estimated open rural establishments	Estimated bed-places	Occupancy rate			Employed personnel
			Of bed-places	Of bed-places at weekend	Of bedrooms	
Santa Cruz de Tenerife	468	2,697	29.01	27.01	44.64	690
Ávila	742	5,279	6.30	13.22	10.17	1,196
Girona	538	4,509	6.48	15.53	8.30	713
Barcelona	422	3,821	7.33	16.34	8.44	594
Huesca	588	4,348	6.33	11.38	6.89	649
Málaga	585	3,919	6.84	8.61	13.23	714
Palmas, Las	121	916	28.94	32.08	43.83	192
Cáceres	432	5,048	5.20	12.55	6.86	613
Salamanca	470	3,677	6.82	11.03	8.19	606
Segovia	391	3,536	5.60	13.57	6.06	568
Lleida	553	3,946	5.00	9.39	6.65	674
Cuenca	282	2,902	5.09	8.13	7.32	360
Gipuzkoa	149	1,621	8.52	11.12	11.17	199
Albacete	604	3,775	3.47	8.47	4.69	791
Teruel	344	2,802	4.38	10.62	6.58	409

<sup>1</sup> Provinces belonging to uniprovincial Autonomous Communities have not been included because they are reflected in previous tables.

## 5. Number of travellers, overnight stays, average stay, capacity and occupancy rates in areas with the highest number of overnight stays

Areas	Number of travellers		Number of overnight stays		Average stay	Capacity		Occupancy rate		
	Residents In Spain	Residents abroad	Residents In Spain	Residents abroad		Estimated open rural establishments	Estimated bed-places	Of bed-places	Of bed-places at weekend	Of bedrooms
Isla de Tenerife	541	2,204	1,029	12,199	4.82	111	1,098	38.77	36.06	52.80
Pirineus	5,301	146	10,758	164	2.01	711	5,481	6.42	14.77	7.69
P.Nacional Teide	499	1,835	910	9,753	4.57	75	807	42.53	39.65	56.93
Pirineo Aragonés	2,355	71	6,349	1,503	3.24	530	3,961	6.39	12.31	7.05
Isla de La Palma	181	537	1,585	5,634	10.05	234	976	23.81	22.11	42.77
Isla Gran Canaria	439	877	1,191	4,440	4.28	96	625	28.73	33.11	46.23
Pirineo Navarro	2,690	57	5,485	95	2.03	478	3,411	5.27	14.12	6.39
Catalunya Central	1,709	188	4,652	276	2.60	240	2,130	7.45	14.32	8.57
P.Nacional Taburiente	129	234	1,264	2,780	11.15	132	579	22.42	19.24	39.76
Costa Brava	1,822	146	3,486	411	1.98	330	2,800	4.49	10.77	5.45
Isla de Mallorca	376	740	860	2,672	3.16	57	948	11.98	16.75	14.52
Isla de La Gomera	39	423	180	3,016	6.92	74	434	23.60	23.42	35.89
P.Nacional Garajonay	39	423	180	3,016	6.92	74	434	23.60	23.42	35.89
P.Natural Sierra de Aracena y Picos de Aroche	1,413	163	2,356	445	1.78	100	808	11.13	22.20	18.72
P.Natural del Arribes del Duero	899	-	2,213	-	2.46	44	538	13.27	15.67	16.81

## 6. Number of travellers, overnight stays, average stay, capacity, occupancy rates and employed personnel per rural house by Autonomous City and Community<sup>2</sup>

Autonomous Communities	Number of travellers		Number of overnight stays		Average stay	Capacity		Occupancy rate		Employed personnel
	Residents In Spain	Residents abroad	Residents In Spain	Residents abroad		Estimated open rural establish.	Estimated bed-places	Of bed-places	Of bed-places at weekends	
TOTAL	53,926	5,244	119,013	31,584	2.55	11,999	94,094	5.16	10.00	15,583
Andalucía	6,647	1,151	15,604	7,140	2.92	1,454	12,409	5.91	9.64	2,073
Aragón	3,428	91	7,207	721	2.25	828	6,356	4.02	9.51	955
Asturias, Principado de	984	28	2,145	28	2.15	710	4,620	1.52	3.34	919
Balears, Illes	298	312	644	935	2.59	20	276	18.32	24.22	54
Canarias	434	1,917	2,813	16,501	8.22	561	2,816	22.08	21.68	731
Cantabria	894	30	2,354	103	2.66	113	1,805	4.39	7.77	144
Castilla y León	11,411	252	24,949	2,206	2.33	2,766	18,828	4.65	10.01	3,567
Castilla-La Mancha	6,161	178	13,074	1,163	2.25	1,380	11,376	4.03	8.80	1,794
Cataluña	11,312	741	23,752	1,414	2.09	1,696	13,794	5.88	13.10	2,185
Comunitat Valenciana	2,274	56	6,003	235	2.68	897	6,912	2.91	5.42	1,240
Extremadura	1,327	120	2,314	333	1.83	310	2,951	2.89	7.06	373
Galicia	2,054	110	3,689	149	1.77	305	3,576	3.46	7.44	400
Madrid, Comunidad de	634	17	1,342	34	2.11	55	483	9.19	26.19	74
Murcia, Región de	834	9	1,634	23	1.96	102	1,384	3.86	10.76	131
Navarra, Comunidad Foral de	2,682	53	5,673	88	2.11	529	3,793	4.90	12.73	618
País Vasco	1,882	180	4,351	511	2.36	183	1,853	8.45	11.88	219
Rioja, La	671	-	1,466	-	2.19	90	864	5.47	13.37	105
Ceuta	-	-	-	-	-	-	-	-	-	-
Melilla	-	-	-	-	-	-	-	-	-	-

<sup>2</sup> To facilitate the comparability between data from different Autonomous Communities (and because of the different regulation and different characteristics), a group called rural house has been created, with those establishments with similar typology (location, capacity, etc...). The variables included in the previous table have been estimated with that type of establishments.



## 7. Travellers and overnight stays by country of residence

Results by countries	Travellers		Overnight stays	
	Total	%	Total	%
TOTAL	91,669	100.00	221,119	100.00
Residents Spain	82,132	89.60	171,003	77.34
Residents abroad	9,537	10.40	50,116	22.66
Total Residents abroad	9,537	100.00	50,116	100.00
Total Residents in EU (excluding Spain)	8,084	84.76	43,059	85.92
- Germany	2,896	30.36	22,670	45.23
- Belgium	301	3.15	1,117	2.23
- France	1,247	13.08	3,683	7.35
- Italy	405	4.25	1,059	2.11
- Netherlands	702	7.36	3,772	7.53
- Portugal	339	3.55	1,088	2.17
- United Kingdom	1,611	16.90	6,291	12.55
Switzerland	145	1.52	761	1.52
Other European countries	1,232	12.92	6,370	12.71
United States of America	240	2.52	598	1.19
Other countries	419	4.40	2,707	5.40

## HOLIDAY DWELLING PRICE INDEX (HDPI)

January 2014

Provisional data

### National general index and breakdown by rates

	Index	Annual variation rate
TOTAL	104.89	0.01
Normal	104.71	-0.55
Weekend	103.66	-5.40
Tour-operators and travel agencies	105.80	0.66

### National general index and breakdown by modalities

	Index	Annual variation rate
TOTAL	104.89	0.01
Studio	103.63	-0.60
Dwellings 2/4 bedplaces	103.85	0.06
Dwellings 4/6 bedplaces	112.49	0.35

**Tourist Campsite Price Index (TCSPI). 2002 Base  
January 2014**

Provisional data

**National general index and breakdown by rates**

	Index	Annual variation rate
TOTAL	142.84	0.83
Normal rate	138.98	1.03
Special rate for stays up to one month	129.83	0.42
Special rate for stays longer than one month	145.02	0.67

**National general index and breakdown by categories**

	Index	Annual variation rate
TOTAL	142.84	0.83
Luxury and first	153.08	0.81
Second	136.91	0.88
Third	145.86	0.17

## Rural Tourism Accommodation Price Index (RTAPI)

January 2014

Provisional data

### General Autonomous Cities and Communities and national indices

	Index	Annual variation rate
<b>TOTAL</b>	<b>130.10</b>	<b>-0.88</b>
Andalucía	133.92	-4.39
Aragón	152.44	-0.90
Asturias, Principado de	131.63	-4.36
Balears, Illes	99.03	-1.67
Canarias	102.51	-3.09
Cantabria	159.00	-2.51
Castilla y León	127.90	-2.90
Castilla - La Mancha	117.15	-1.75
Cataluña	139.84	1.70
Comunitat Valenciana	125.56	-3.38
Extremadura	97.63	-2.46
Galicia	133.34	-2.02
Madrid, Comunidad de	139.33	11.89
Murcia, Región de	161.49	0.04
Navarra, Comunidad Foral de	191.82	2.62
País Vasco	153.69	2.49
Rioja, La	158.93	4.40
Ceuta	-	-
Melilla	-	-

### National general index and breakdown by rates

	Index	Annual variation rate
<b>TOTAL</b>	<b>130.10</b>	<b>-0.88</b>
Normal	130.33	-0.84
Weekend	131.86	-0.91

### National general index and breakdown by rent modality

	Index	Annual variation rate
<b>TOTAL</b>	<b>130.10</b>	<b>-0.88</b>
Shared use (in case of per room rent modality)	111.31	-2.69
Full use (rent of entire dwelling)	139.27	-0.06