

31 March 2015

Non-Hotel Tourist Accommodation Occupancy Survey
February 2015. *Provisional data*

The INE publishes the first results of the Hostel Occupancy Survey¹

**Overnight stays in non-hotel tourist accommodation increase 0.9%
in February as compared to the same month of 2014**

Overnight stays in non-hotel tourist accommodation (holiday dwellings, campsites, rural tourism accommodation and hostels) exceeded five million in February, that is, 0.9% more than in the same month of 2014. Overnight stays of resident travellers increased by 9.9% while those of non-residents decreased by 1.2%. The average stay stood at 6.2 overnight stays per traveller.

Travellers and overnight stays in collective non-hotel tourist accommodation during the month of January were:

February 2015	Travellers	Overnight stays
Residents in Spain	391,982	1,034,528
EU (not including Spain)	354,702	3,415,541
Rest of the world	64,522	573,273
TOTAL	811,206	5,023,342

Holiday Dwellings

Overnight stays in holiday dwellings decreased 1.0% in February. Those of residents increased by 4.5% and those of non-residents decreased by 1.8%. The average stay decreased by 7.2%, standing at 7.3 overnight stays per traveller.

In February, 36.8% of the bedplaces available for holiday dwellings were occupied, 0.8% less than in the same month of 2014. The weekend occupancy rate by bedplaces stood at 39.4%, with an increase of 1.3%.

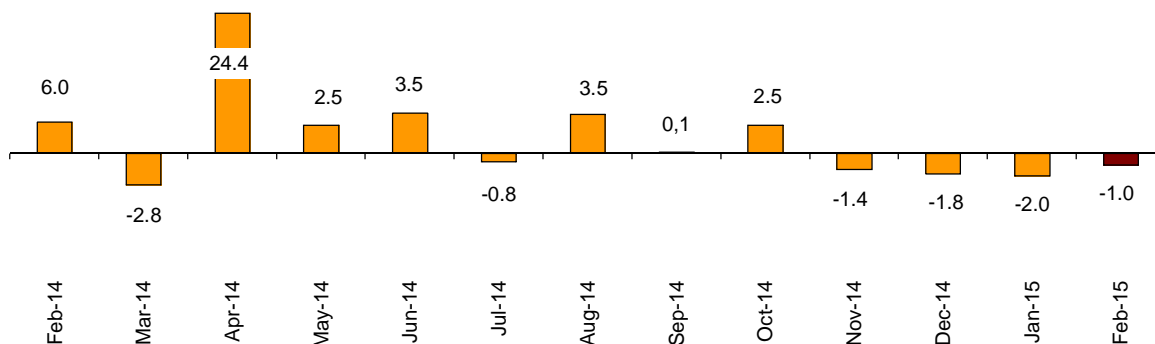
¹ The INE publishes, for the first time and as a novelty, the results for the Hostel Occupancy Survey, in accordance with Royal Decree 1085/2014, of 19 December, regulating the Annual Programme for 2015 of the National Statistics Plan 2013-2016. Said operation was submitted to the Permanent Commission of High Council on Statistics on 17 March 2015.

In order to meet the information requirements, both at a national and an international level, the Hostel Occupancy Survey was launched in 2014. Its register is formed by the Hostels within the Spanish Youth Hostel Association (Red Española de Albergues Juveniles, REAJ, in Spanish).

Hostels are establishments that offer accommodation services to the public, mainly in shared rooms, either with or without complimentary services, and they usually provide with activities related to their surroundings.

Non-resident overnight stays in holiday dwellings represented 86.6% of the total. The United Kingdom was the main country of origin, with 866,357 overnight stays, that is, 1.2% less than in February 2014. The following country of origin was Germany, with 532,222 overnight stays, that is, a 7.1% decrease.

Overnight stays annual growth rate in holiday dwellings in %

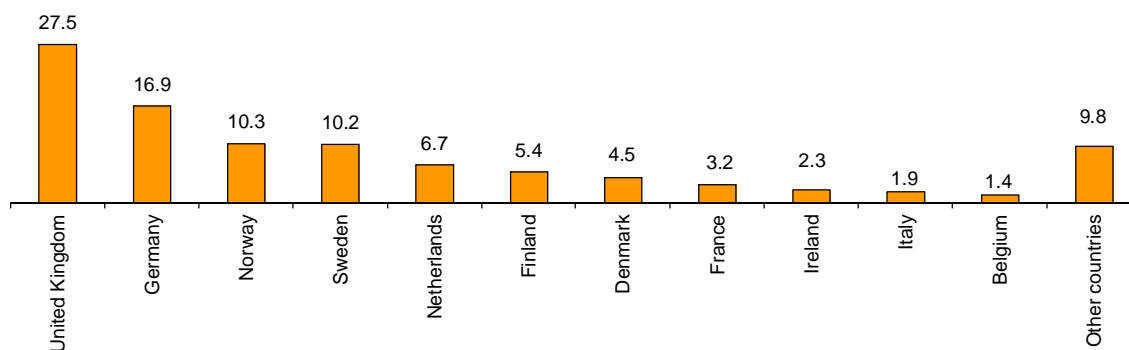


Canarias was the preferred holiday dwelling destination, with more than 2.5 million overnight stays, 5.3% less than in February 2014. This Autonomous Community also registered the highest occupancy rate, with 85.0% of the dwellings offered.

By tourist areas, Gran Canaria island was the preferred destination, with 855,732 overnight stays and an occupancy rate of 89.6% of the dwellings offered.

The tourist sites with the greatest number of overnight stays in February were San Bartolomé de Tirajana, Arona and Mogán.

Distribution of overnight stays of residents abroad of the 11 main countries by origin



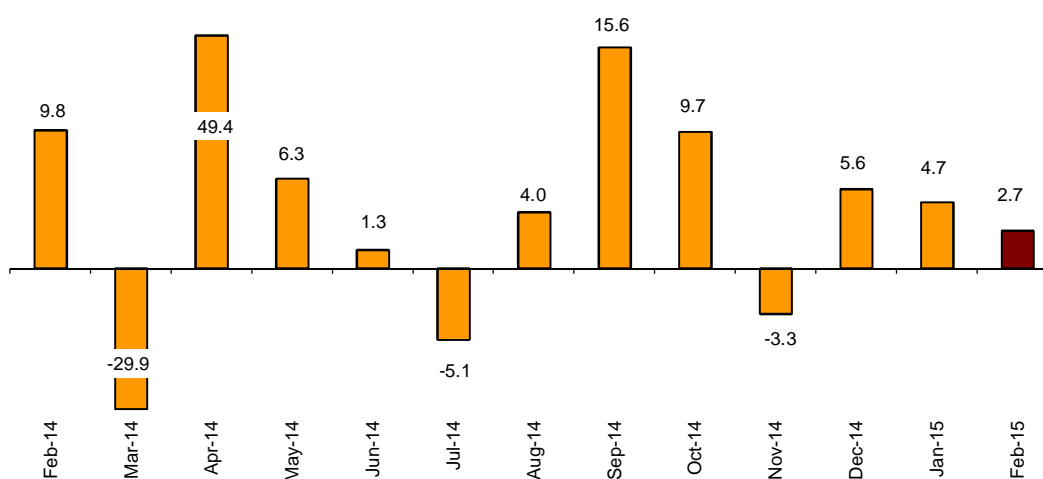
Campsites

Overnight stays in tourist campsites registered an annual increase of 2.7% in February. Overnight stays of resident travellers increased by 12.5% and those of non-resident travellers did not record any variation as compared with the previous year.

In February, 37.0% of the offered pitches were occupied, that is, 0.3% less. The weekend occupancy rate by pitch reached 39.4%, with a 2.3% annual increase.

76.9% of the overnight stays in tourist campsites were by non-residents. The United Kingdom was the main country of origin, with 34.7% of the overnight stays by non-residents, 0.7% less than in February 2014.

Overnight stays annual growth rate in campsites in %



Comunitat Valenciana was the preferred destination regarding campsites, with 488,250 overnight stays, 2.2% more than in the same month of the previous year.

La Rioja was the Autonomous Community with the highest occupancy rate on campsites, with 61.0% of the pitches offered.

By tourist areas, Costa Blanca was the preferred destination for camping, with 268,144 overnight stays and an occupancy rate of 79.8% of the pitches offered.

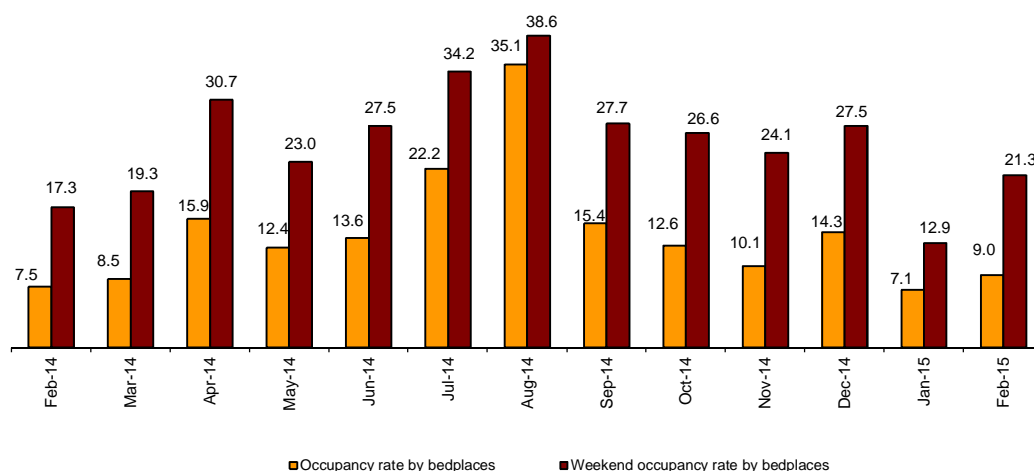
The tourist sites with the highest number of overnight stays were Benidorm, Cartagena and Marbella.

Rural Tourism Accommodation

Overnight stays in rural tourism accommodation presented an annual increase of 19.5% in February. Residents' overnight stays increased by 21.4% and those of non-residents did so by 13.1%.

Regarding rural tourism accommodation, 9.0% of the bedplaces were occupied, that is, a 19.6% increase as compared to February 2014. The weekend occupancy rate stood at 21.3%, with a 23.1% increase.

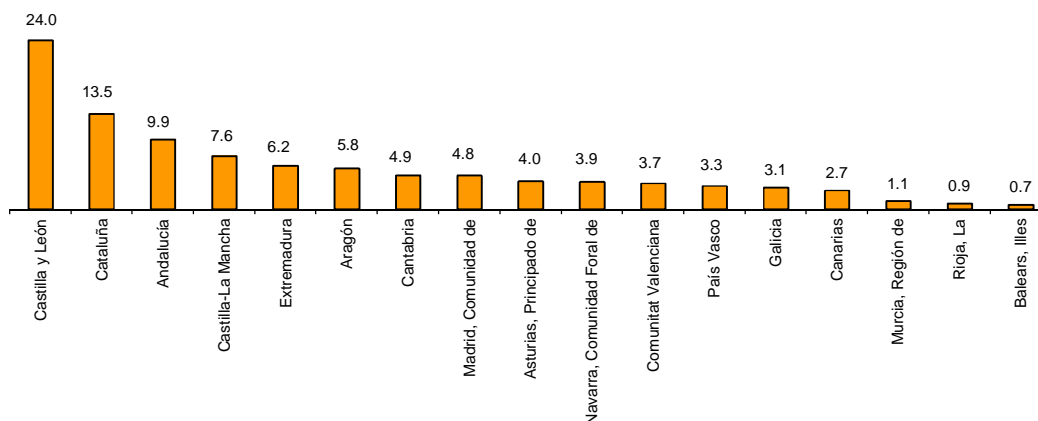
Occupancy rate by bedplaces and bedplaces on weekends



By Autonomous Community, Castilla y León was the preferred destination, with 63,860 overnight stays, 24.3% more than in the same month of the previous year. Canarias reached the highest occupancy rate, with 35.8% of the bedplaces offered.

By tourist area, Pirineus was the main destination, with 19,772 overnight stays. Parque Nacional del Teide reached the greatest occupancy rate, with 49.6% of the bedplaces offered.

Distribution of overnight stays of traveller residents by autonomous community of destination in %



Hostels¹

Overnight stays in hostels registered an annual increase of 4.4% in February. Overnight stays of resident travellers increased by 3.2% and those of non-resident travellers did so by 6.9%.

In February, 17.0% of the offered bedplaces were occupied, that is, 3.4% less than in the same month of 2014. The weekend occupancy rate by bedplaces reached 24.2%, with a 9.5% annual decrease.

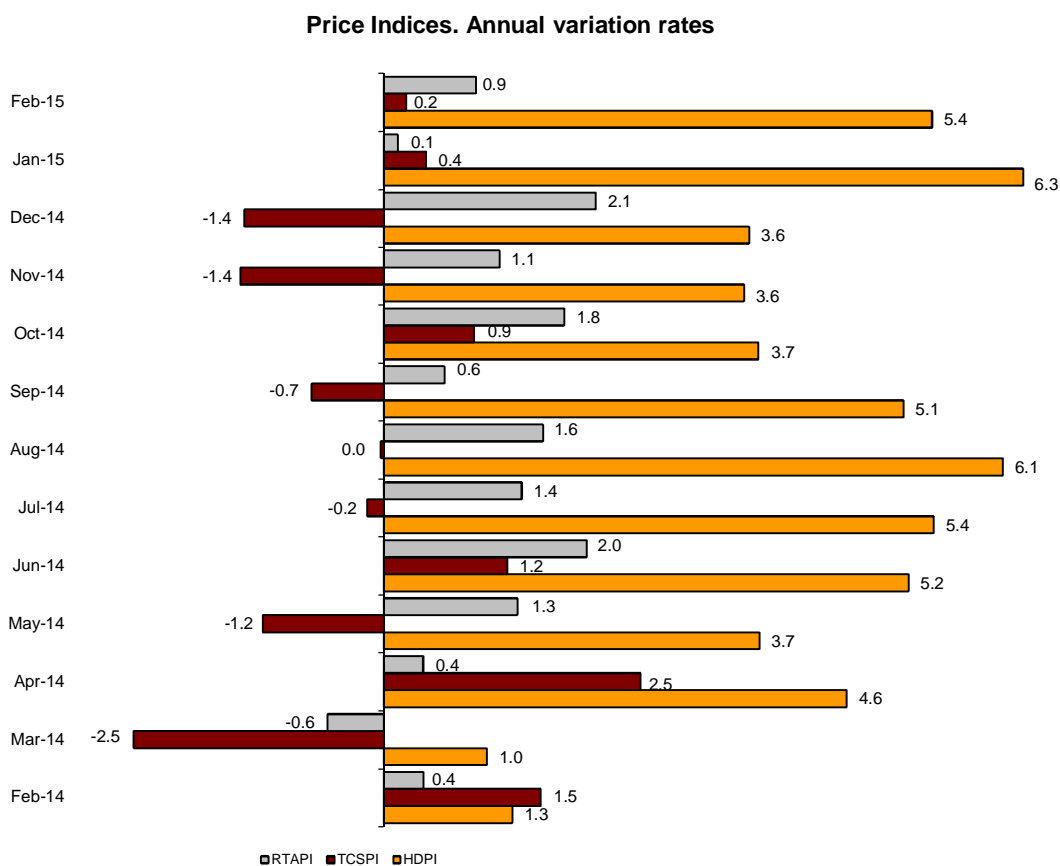
By Autonomous Community, Cataluña was the preferred destination, with 40,692 overnight stays, 1.7% less than in February 2014. In turn, Comunidad de Madrid reached the highest occupancy rate, with 31.0% of the bedplaces offered.

Price Indices

The Holiday Dwelling Price Index (HDPI) increased 5.4%, as compared to February 2014. The *tour operators and travel agencies* rate, which carried the greatest weight in the weighting structure for this month (60.4%), increased by 6.0%.

The Tourist Campsite Price Index (TCPI) increased by 0.2% in the annual rate. The *normal* rate, which had the greatest weight in the weighting structure for February (39.9%), remained unchanged as compared with the same month of 2014.

The Rural Tourism Accommodation Price Index (RTAPI) registered a 0.9% increase in February. The *weekend* rate, which accounted for 71.6% of the total weight, increased by 0.9% in the annual rate.



Evolution of travellers and overnight stays in all Spanish collective tourist accommodation

In February, overnight stays in Spanish collective tourist accommodation (hotels², holiday dwellings, campsites, rural tourism accommodation and hostels¹) registered a 3.4% increase in its annual rate. Overnight stays of residents increased by 7.2%, while those of non-residents did so by 1.4%.

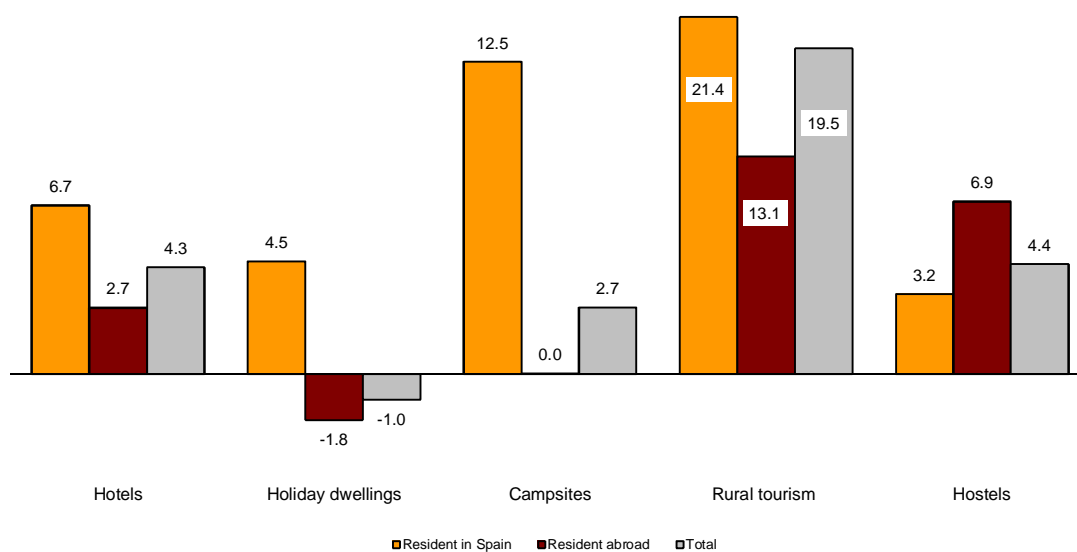
The average stay decreased 2.4% as compared to the same month of the previous year, standing at 3.4 overnight stays per traveller.

Travellers and overnight stays in collective tourist accommodation were:

February 2015	Holiday dwelling	Campsites	Rural T.	Non-hotel	Hotels	Hotels	Total
Travellers	499,576	123,684	143,951	43,995	811,206	4,921,140	5,732,346
Residents	151,058	78,925	129,875	32,124	391,982	2,879,648	3,271,630
Non-residents	348,518	44,759	14,076	11,871	419,224	2,041,492	2,460,716
Overnight stays	3,640,308	955,730	325,865	101,439	5,023,342	14,466,042	19,489,384
Residents	489,026	221,094	256,223	68,185	1,034,528	5,824,955	6,859,483
Non-residents	3,151,282	734,636	69,642	33,254	3,988,814	8,641,087	12,629,901

Of the total overnight stays in collective tourist accommodation, 74% accounted for hotels, and 26% did so for non-hotel tourist accommodation.

Overnight stays annual growth rate in collective tourist accommodation



The main countries of origin in overall regulated tourist accommodation were the United Kingdom (with 24.1% of the total number of non-resident overnight stays), Germany (21.4%) and France (6.5%).

Canarias was the preferred destination, with more than 7.5 million overnight stays (2.5% below that registered in February 2014), followed by Andalucía, with over 2.9 million overnight stays (10.4% more), and Cataluña, with over 2.2 million (6.7% more).

For further information see INEbase-www.ine.es/en/

All press releases at: www.ine.es/en/prensa/prensa_en.htm

Press Office: Telephone numbers: 91 583 93 63 / 94 08 – Fax: 91 583 90 87 - gprensa@ine.es

Information Area: Telephone number: 91 583 91 00 – Fax: 91 583 91 58 – www.ine.es/infoine/?L=1

² The press release corresponding to Hotel Tourism Short-Term Trends was published on 23 March.

Tourist Accommodation Occupancy Survey (Holiday Dwellings)

February 2015 Provisional data

1. Travellers, overnight stays and average stay by Autonomous Cities and Communities

Autonomous Cities and Communities	Travellers			Overnight stays			Average stay
	Total	Residents in Spain	Residents abroad	Total	Residents in Spain	Residents abroad	
TOTAL	499,576	151,058	348,518	3,640,308	489,026	3,151,282	7.29
Andalucía	92,686	43,529	49,156	406,197	99,008	307,189	4.38
Aragón	13,105	12,396	709	35,498	32,202	3,297	2.71
Asturias, Principado de	675	579	96	1,681	1,488	193	2.49
Balears, Illes	3,171	1,064	2,106	24,984	5,977	19,007	7.88
Canarias	265,030	18,456	246,574	2,507,887	94,855	2,413,032	9.46
Cantabria	3,362	3,218	144	8,839	7,478	1,362	2.63
Castilla y León	6,061	5,907	154	15,547	14,506	1,041	2.57
Castilla - La Mancha	4,238	3,986	252	9,859	8,390	1,469	2.33
Cataluña	33,051	19,213	13,838	143,687	78,792	64,895	4.35
Comunitat Valenciana	36,896	14,141	22,755	314,140	49,688	264,451	8.51
Extremadura	2,970	2,614	355	5,264	4,651	613	1.77
Galicia	3,507	3,201	306	10,448	9,655	793	2.98
Madrid, Comunidad de	22,805	13,668	9,137	100,506	50,783	49,723	4.41
Murcia, Región de	5,101	3,016	2,086	33,736	14,109	19,627	6.61
Navarra, Comunidad Foral de	1,877	1,775	102	5,829	5,293	536	3.11
País Vasco	2,061	1,450	611	10,127	6,387	3,740	4.91
Rioja, La	2,982	2,845	137	6,080	5,766	314	2.04
Ceuta	-	-	-	-	-	-	-
Melilla	-	-	-	-	-	-	-
Annual rate	6.65	15.27	3.30	-1.03	4.50	-1.84	-7.20
Cumulative annual rate	6.44	18.47	2.32	-1.51	8.39	-2.90	-7.47

2. Capacity, occupancy and number of staff by Autonomous Cities and Communities

Autonomous Cities and Communities	Capacity		Level of occupancy				Employed personnel
	Estimated bedplaces	Estimated Holiday dwelling	Per bedplaces	Per bedplaces at weekend	Per Holiday dwelling	Per Holiday dwelling at weekend	
TOTAL	351,534	95,544	36.83	39.41	61.24	63.89	19,854
Andalucía	55,965	14,014	25.87	31.58	42.84	50.02	3,270
Aragón	6,494	1,521	19.85	35.62	28.54	45.24	462
Asturias, Principado de	2,899	761	2.07	3.92	3.66	6.13	184
Balears, Illes	3,182	863	28.02	26.95	49.58	47.49	358
Canarias	154,729	48,274	57.53	57.84	84.95	85.09	10,289
Cantabria	3,063	839	10.30	15.76	18.17	25.46	171
Castilla y León	4,618	971	12.01	23.21	23.18	33.89	395
Castilla - La Mancha	4,460	1,084	7.89	17.11	12.33	23.90	374
Cataluña	21,328	5,251	24.05	29.02	34.73	39.65	860
Comunitat Valenciana	69,329	14,661	16.18	17.46	34.56	36.72	2,033
Extremadura	1,475	329	12.73	24.65	18.31	32.60	156
Galicia	3,006	828	12.40	16.42	23.35	27.51	194
Madrid, Comunidad de	7,599	3,078	46.91	53.73	64.29	68.49	431
Murcia, Región de	8,126	1,889	14.83	15.40	31.11	32.06	219
Navarra, Comunidad Foral de	1,620	300	12.83	23.16	26.36	34.30	241
País Vasco	2,402	593	15.05	17.84	37.27	40.71	102
Rioja, La	1,237	288	17.53	37.03	24.68	48.34	116
Ceuta	-	-	-	-	-	-	-
Melilla	-	-	-	-	-	-	-
Annual rate	-0.25	-1.17	-0.82	1.29	0.04	1.31	5.24
Cumulative annual rate	-0.12	-1.20	-1.32	0.87	-0.54	0.69	5.08

3. Travellers, overnight stays, capacity, occupancy, total number of staff with greater number of overnight stays *

Provinces	Travellers		Overnight stays			Capacity		Level of occupancy			Employed personnel
	Residents in Spain	Residents abroad	Residents in Spain	Residents abroad	Average stay	Estimated bed-places	Estimated holiday dwelling	Per bed-places	Per Holiday dwelling	Per Holiday dwelling at weekend	
Palmas, Las	10,453	152,908	52,588	1,558,293	9.86	99,330	31,096	57.58	86.19	86.36	6,271
Santa Cruz de Tenerife	8,003	93,666	42,267	854,739	8.82	55,399	17,179	57.46	82.69	82.77	4,018
Málaga	14,097	33,877	32,385	245,194	5.79	34,811	8,545	28.48	49.78	54.12	2,078
Alicante/Alacant	8,502	18,062	25,417	233,396	9.74	51,463	11,030	17.96	38.37	40.44	1,582
Barcelona	6,684	11,251	47,893	54,576	5.71	9,294	2,731	39.41	50.56	52.70	429
Sevilla	9,542	7,973	24,094	25,389	2.83	4,130	1,240	42.45	58.00	71.82	311
Valencia/València	3,826	4,195	15,003	25,739	5.08	8,809	1,907	16.50	33.66	35.29	317
Granada	8,807	4,081	20,663	15,371	2.80	4,890	1,315	26.26	33.13	50.46	396
Huesca	7,590	262	21,995	895	2.92	3,775	845	22.32	28.30	46.77	265
Girona	5,990	1,917	13,478	6,898	2.58	7,214	1,514	10.08	14.15	24.32	282
Almería	899	1,083	3,308	14,559	9.02	4,448	1,006	14.35	27.05	28.18	91
Lleida	5,912	335	14,290	1,748	2.57	2,421	509	23.66	30.31	37.03	91
Castellón/Castelló	1,813	498	9,268	5,316	6.31	9,057	1,724	5.75	11.17	14.49	134
Cádiz	4,978	1,423	8,617	4,409	2.03	3,021	791	15.17	22.16	32.19	198
Teruel	3,632	150	6,873	703	2.00	1,805	421	14.94	23.70	44.47	126

4. Travellers, overnight stays, capacity, occupancy, total number of staff from tourist areas with greater number of overnight stays

Tourist Areas	Travellers		Overnight stays			Capacity		Level of occupancy			Employed personnel
	Residents in Spain	Residents abroad	Residents in Spain	Residents abroad	Average stay	Estimated bed-places	Estimated holiday dwelling	Per bed-places	Per Holiday dwelling	Per Holiday dwelling at weekend	
Isla de Gran Canaria	4,195	71,344	23,802	831,930	11.33	49,276	15,886	61.76	89.63	89.58	2,953
Isla de Tenerife	5,017	86,559	31,078	790,164	8.97	49,177	15,005	59.23	85.45	85.55	3,490
Isla de Lanzarote	4,482	58,831	22,372	503,486	8.31	33,893	10,090	55.10	84.34	84.46	2,404
Costa del Sol	11,498	33,601	27,132	244,089	6.01	33,899	8,370	28.56	50.08	53.95	2,037
Costa Blanca	8,383	17,968	24,585	231,976	9.74	50,313	10,787	18.21	38.86	40.95	1,530
Isla de Fuerteventura	1,776	22,734	6,414	222,877	9.35	16,161	5,120	50.01	79.20	80.15	914
Costa Barcelona	1,245	550	33,408	18,452	28.00	4,379	1,486	42.30	46.13	47.73	119
Barcelona	4,922	10,622	13,591	35,995	3.19	4,263	1,065	41.36	63.21	64.91	277
Isla de La Gomera	846	4,052	3,614	34,007	7.68	3,054	1,053	43.98	66.28	65.84	232
Isla de La Palma	1,694	2,999	6,096	30,280	7.75	2,752	1,000	47.20	65.67	65.37	271

5. Travellers, overnight stays, capacity, occupancy, total number of staff from tourist sites with greater number of overnights stays

Tourist sites	Travellers		Overnight stays			Capacity		Level of occupancy			Employed personnel
	Residents in Spain	Residents abroad	Residents in Spain	Residents abroad	Average stay	Estimated bed-places	Estimated holiday dwelling	Per bed-places	Per Holiday dwelling	Per Holiday dwelling at weekend	
San Bartolomé de Tirajana	3,211	42,233	14,819	516,849	11.70	31,680	10,082	59.68	89.82	89.71	1,823
Arona	1,319	38,044	9,398	345,589	9.02	20,488	6,316	61.72	86.49	87.01	1,538
Mogán	310	28,164	2,424	303,868	10.76	16,788	5,388	65.03	89.37	89.12	1,053
Tías	2,244	31,399	10,857	274,249	8.47	18,050	5,645	55.93	83.87	83.99	1,084
Adeje	1,179	28,272	6,494	244,255	8.51	15,539	4,291	56.78	87.63	87.48	934
Teguise	2,090	15,452	10,795	134,400	8.28	8,833	2,739	58.38	87.68	87.29	666
Benidorm	2,711	9,080	10,780	123,241	11.37	18,961	4,462	25.24	51.58	54.79	764
Puerto de la Cruz	1,974	8,452	12,990	104,543	11.27	6,190	2,522	67.57	85.92	86.22	489
Madrid	13,336	9,037	46,789	48,063	4.24	6,988	2,831	48.10	65.14	69.94	385
Pájara	479	6,499	1,960	81,541	11.97	5,398	1,827	54.26	80.66	81.29	378

* Provinces belonging to uniprovincial Autonomous Communities have not been included because they are reflected in previous tables.

6. Travellers and overnight stays by countries of residence

Countries	Travellers		Overnight stays	
	Total	%	Total	%
TOTAL	499,576	100.00	3,640,308	100.00
Residents in Spain	151,058	30.24	489,026	13.43
Residents abroad	348,518	69.76	3,151,282	86.57
Total residents abroad	348,518	100.00	3,151,282	100.00
Total residents in E.U (excluding Spain)	291,273	83.57	2,619,723	83.13
- Germany	40,113	11.51	532,222	16.89
- Austria	1,852	0.53	23,204	0.74
- Belgium	4,937	1.42	43,850	1.39
-Denmark	15,810	4.54	141,194	4.48
- Finland	18,649	5.35	170,366	5.41
- France	18,376	5.27	100,628	3.19
- Greece	191	0.05	1,314	0.04
- Ireland	10,548	3.03	71,379	2.27
- Italy	9,278	2.66	61,327	1.95
- Luxembourg	578	0.17	5,856	0.19
- Netherlands	19,303	5.54	209,974	6.66
- Poland	3,653	1.05	27,700	0.88
- Portugal	2,446	0.70	9,625	0.31
- United Kingdom	107,675	30.90	866,357	27.49
- Czech Republic	671	0.19	4,789	0.15
- Sweden	33,378	9.58	321,548	10.20
- Other EU countries	3,814	1.09	28,388	0.90
Norway	25,967	7.45	323,628	10.27
Russia	2,802	0.80	20,599	0.65
Switzerland	3,538	1.02	32,695	1.04
Other european countries	3,419	0.98	26,274	0.83
United States of America	3,889	1.12	21,492	0.68
Rest of America	5,872	1.68	48,811	1.55
African countries	2,708	0.78	13,488	0.43
Other countries	9,049	2.60	44,573	1.41

Tourist Accommodation Occupancy Survey Campsite Occupancy Survey (COS)

January 2015

Provisional data

1. Travellers, overnight stays and average stay by category of establishment

Category	Travellers			Overnight stays			Average stay
	Total	Residents in Spain	Residents abroad	Total	Residents in Spain	Residents abroad	
TOTAL	123,684	78,925	44,759	955,730	221,094	734,636	7.73
Luxury and first-class	53,363	31,922	21,441	407,574	90,788	316,786	7.64
Second-class	58,775	37,539	21,236	517,122	111,200	405,921	8.80
Third-class	11,546	9,464	2,083	31,034	19,105	11,929	2.69
Annual rate	4.80	6.72	1.58	2.66	12.49	0.03	-2.04
Cumulative annual rate	8.76	12.52	3.40	3.64	15.92	0.69	-4.71

2. Open establishments, capacity, occupancy and number of staff by category of establishments

Category	Estimated open establishments	Capacity		Occupied pitches	Occupancy rate per pitch	Weekend occupancy rate	Employed personnel
		Estimated bedplaces	Estimated pitches				
TOTAL	457	284,004	89,818	931,630	37.04	39.41	2,804
Luxury and first-class	128	119,198	36,851	378,553	36.69	39.05	1,291
Second-class	263	144,661	46,123	491,451	38.05	39.81	1,305
Third-class	67	20,145	6,843	61,626	32.16	38.74	208
Annual rate	1.00	1.16	1.38	1.12	-0.26	2.30	-0.64
Cumulative annual rate	1.64	1.64	2.03	2.02	-0.05	0.95	1.45

3. Travellers, overnight stays and average stay by Autonomous Cities and Communities

Autonomous cities and communities	Travellers			Overnight stays			Average stay
	Total	Residents in Spain	Residents abroad	Total	Residents in Spain	Residents abroad	
TOTAL	123,684	78,925	44,759	955,730	221,094	734,636	7.73
Andalucía	28,766	13,803	14,963	208,303	51,223	157,080	7.24
Aragón	5,448	4,672	777	13,253	12,184	1,069	2.43
Asturias, Principado de	592	353	239	1,064	657	407	1.80
Balears, Illes	-	-	-	-	-	-	-
Canarias	1,155	835	320	6,183	2,135	4,048	5.35
Cantabria	408	393	15	716	693	22	1.76
Castilla y León	2,117	894	1,223	3,321	1,718	1,603	1.57
Castilla - La Mancha	1,619	1,446	174	3,096	2,820	276	1.91
Cataluña	37,866	34,502	3,364	79,816	66,706	13,111	2.11
Comunitat Valenciana	26,166	9,767	16,400	488,250	47,671	440,579	18.66
Extremadura	2,549	1,216	1,333	4,353	1,887	2,466	1.71
Galicia	175	105	70	325	181	144	1.86
Madrid, Comunidad de	6,960	5,862	1,098	20,153	18,375	1,778	2.90
Murcia, Región de	5,692	2,259	3,433	118,041	8,182	109,859	20.74
Navarra, Comunidad Foral de	1,526	1,180	347	3,112	2,618	494	2.04
País Vasco	845	388	457	2,452	1,517	935	2.90
Rioja, La	1,799	1,251	548	3,292	2,527	765	1.83
Ceuta	-	-	-	-	-	-	-
Melilla	-	-	-	-	-	-	-

4. Open establishments, capacity, occupancy and number of staff by autonomous cities and communities

Autonomous cities and communities	Estimated open establishments	Capacity		Occupied pitches	Occupancy rate per pitch	Weekend occupancy rate	Employed personnel
		Estimated bedplaces	Estimated pitches				
TOTAL	457	284,004	89,818	931,630	37.04	39.41	2,804
Andalucía	97	59,978	19,193	146,239	27.21	29.56	613
Aragón	40	16,475	4,955	28,159	20.30	22.77	136
Asturias, Principado de	7	4,106	1,290	3,150	8.72	20.32	17
Balears, Illes	-	-	-	-	-	-	-
Canarias	5	3,580	1,332	6,241	16.74	19.36	24
Cantabria	7	3,938	1,107	13,613	43.91	44.08	26
Castilla y León	26	9,323	2,955	12,703	15.35	19.57	56
Castilla - La Mancha	12	4,450	1,278	8,543	23.88	25.14	41
Cataluña	81	59,122	18,399	163,273	31.69	39.01	523
Comunitat Valenciana	91	63,391	20,055	326,632	58.17	57.70	778
Extremadura	10	3,576	1,210	7,648	22.57	27.18	62
Galicia	20	6,510	2,262	5,059	7.99	7.93	48
Madrid, Comunidad de	18	16,703	5,585	75,275	48.14	46.09	161
Murcia, Región de	18	14,866	4,915	72,820	52.91	55.82	172
Navarra, Comunidad Foral de	9	5,397	1,374	12,396	32.21	32.50	54
País Vasco	10	5,108	1,617	10,760	23.77	29.30	44
Rioja, La	7	7,480	2,290	39,118	61.01	60.77	50
Ceuta	-	-	-	-	-	-	-
Melilla	-	-	-	-	-	-	-

5. Travellers and overnight stays, average stay, capacity, occupancy and number of staff by provinces with the greatest number of overnight stays**

Provinces	Travellers		Overnight stays		Average stay	Estimated open establishments	Estimated pitches	Occupancy rate per pitch	Employed personnel
	Residents in Spain	Residents abroad	Residents in Spain	Residents abroad					
	Alicante\Alacant	2,201	9,011	22,167					
Castellón\Castelló	2,318	4,995	10,089	94,466	14.30	32	5,877	44.18	212
Málaga	1,446	5,109	10,637	75,157	13.09	27	4,405	41.13	165
Valencia\València	5,248	2,393	15,416	39,949	7.25	25	5,044	45.66	161
Almería	1,205	2,327	8,524	39,237	13.52	16	2,348	37.68	90
Barcelona	15,192	399	29,968	1,236	2.00	20	5,691	31.04	159
Girona	10,882	2,164	17,295	9,696	2.07	27	5,481	26.89	191
Huelva	5,392	657	20,771	4,821	4.23	11	4,786	19.19	91
Cádiz	1,540	2,933	3,981	18,378	5.00	13	3,348	23.17	103
Granada	1,977	2,509	3,580	16,700	4.52	18	2,350	21.88	94
Tarragona	3,698	771	8,862	2,089	2.45	14	3,750	27.34	95
Lleida	4,729	30	10,581	90	2.24	19	3,478	45.02	78
Huesca	3,212	72	7,909	127	2.45	24	3,460	24.53	94
Zaragoza	210	695	1,788	871	2.94	6	503	20.21	21
Córdoba	1,053	456	1,644	995	1.75	4	931	13.72	24

** Provinces belonging to uniprovincial Autonomous Communities have not been included because they are reflected in previous tables.

6. Travellers, overnight stays, average stay, open establishments, capacity, occupancy and number of staff from tourist areas with the greatest number of overnight stays

Tourist areas	Travellers		Overnight stays		Average stay	Estimated open establishments	Estimated pitches	Occupancy rate per pitch	Employed personnel
	Residents in	Residents abroad	Residents in	Residents abroad					
	Spain		Spain						
Costa Blanca	1,141	6,520	15,314	252,830	28.00	26	6,940	79.78	345
Costa Cádiz	767	2,739	3,332	99,334	28.00	9	3,798	57.95	138
Costa de Castellón	1,380	4,708	8,587	93,126	16.71	26	5,426	45.18	197
Costa del Sol	784	4,201	9,409	71,282	16.19	12	3,067	53.91	122
Costa Valencia	1,903	1,829	7,513	40,024	12.74	11	3,224	49.34	108
Costa de Almería	1,043	2,238	8,159	36,890	13.73	12	2,039	38.57	71
Pirineus	16,016	9	30,783	13	1.92	36	5,486	47.75	154
Costa De La Luz (Huelva)	3,948	573	18,325	3,261	4.77	6	4,058	17.26	66
Costa De La Luz (Cádiz)	1,164	2,713	3,282	17,967	5.48	10	2,769	23.82	83
Costa Barcelona	9,404	383	18,054	1,182	1.97	8	4,110	25.03	100
Costa Brava	3,933	2,164	6,214	9,696	2.61	15	3,927	19.95	137
Costa Tropical	335	1,366	946	12,930	8.16	6	1,035	29.84	37
Costa Daurada	3,482	490	8,464	1,350	2.47	10	3,088	30.92	76
Pirineo Aragonés	3,166	69	7,857	124	2.47	21	3,261	24.22	89
P.N. Doñana	2,079	382	4,217	1,201	2.20	5	2,748	14.06	56

7. Travellers, overnight stays, average stay, open establishments, capacity, occupancy and number of staff from tourist sites with the greatest number at overnights stays

Tourist sites	Travellers		Overnight stays		Average stay	Estimated open establishments	Estimated pitches	Occupancy rate per pitch	Employed personnel
	Residents in	Residents abroad	Residents in	Residents abroad					
	Spain		Spain						
Benidorm	278	2,826	9,051	138,855	28.00	9	3,758	82.56	154
Cartagena	33	1,568	1,016	61,680	28.00	3	2,537	45.92	88
Marbella	509	1,691	7,768	33,698	18.85	3	1,310	55.29	58
Mazarrón	136	925	1,117	30,235	28.00	3	874	83.30	35
Oliva	249	1,166	1,459	28,539	21.20	5	1,248	46.40	69
Cabanes	36	512	347	27,050	28.00	3	964	55.85	44
Benicasim/Benicàssim	139	1,147	1,079	22,443	18.29	3	833	58.79	34
Peníscola/Peñíscola	450	1,696	1,898	20,227	10.31	8	1,287	41.08	52
Vélez-Málaga	40	647	716	19,596	28.00	3	544	66.35	30
Campello (El)	116	453	2,277	9,068	19.94	3	301	70.21	21
Motril	248	979	531	8,862	7.66	3	586	37.77	24
Fortuna	250	374	1,116	7,488	13.79	3	216	80.41	4

8. Travellers and overnight stays by countries of residence

Countries	Travellers		Overnight stays	
	Total	%	Total	%
TOTAL	123,684	100.00	955,730	100.00
Residents in Spain	78,925	63.81	221,094	23.13
Residents abroad	44,759	36.19	734,636	76.87
TOTAL residents abroad	44,759	100.00	734,636	100.00
TOTAL residents in E.U. (excluding Spain)	42,409	94.75	708,977	96.51
- Germany	7,984	17.84	187,103	25.47
- Austria	389	0.87	4,756	0.65
- Belgium	1,779	3.98	36,440	4.96
- Denmark	463	1.03	11,361	1.55
- Finland	421	0.94	9,298	1.27
- France	8,169	18.25	64,582	8.79
- Greece	11	0.02	39	0.01
- Ireland	344	0.77	3,416	0.46
- Italy	540	1.21	4,271	0.58
- Luxembourg	39	0.09	1,429	0.19
- Netherlands	6,641	14.84	105,062	14.30
- Poland	147	0.33	541	0.07
- Portugal	250	0.56	575	0.08
- United Kingdom	13,611	30.41	254,598	34.66
- Czech Republic	82	0.18	333	0.05
- Sweden	1,219	2.72	23,598	3.21
- Other EU countries	319	0.71	1,574	0.21
Norway	449	1.00	7,074	0.96
Russia	-	-	49	0.01
Switzerland	1,271	2.84	14,573	1.98
Other European countries	172	0.38	663	0.09
United States of America	64	0.14	412	0.06
Rest of America	113	0.25	726	0.10
African countries	6	0.01	106	0.01
Other countries	275	0.62	2,056	0.28

* Non-significant data

**Tourist accommodation occupancy survey
(Rural tourist accommodation)**

February 2015

Provisional data

1. Number of travellers, overnight stays and average stay by Autonomous City and Community

Autonomous Communities	Number of travellers			Number of overnight stays			Average stay
	Total	Residents In Spain	Residents abroad	Total	Residents In Spain	Residents abroad	
TOTAL	143,951	129,875	14,076	325,866	256,223	69,642	2.26
Andalucía	12,035	10,770	1,265	33,818	25,435	8,383	2.81
Aragón	6,739	6,593	146	15,387	14,854	533	2.28
Asturias, Principado de	4,912	4,895	17	10,265	10,242	23	2.09
Balears, Illes	3,571	806	2,765	14,588	1,700	12,887	4.08
Canarias	7,671	1,744	5,926	40,438	6,906	33,532	5.27
Cantabria	6,986	6,774	212	12,910	12,462	448	1.85
Castilla y León	32,780	31,988	792	63,860	61,540	2,320	1.95
Castilla-La Mancha	9,943	9,840	103	19,538	19,381	157	1.97
Cataluña	20,154	19,215	939	38,078	34,689	3,390	1.89
Comunitat Valenciana	4,975	4,393	582	14,057	9,394	4,663	2.83
Extremadura	8,808	8,431	378	16,827	15,807	1,019	1.91
Galicia	5,961	5,807	153	8,353	8,012	341	1.40
Madrid, Comunidad de	7,483	7,120	363	12,920	12,240	681	1.73
Murcia, Región de	1,862	1,739	123	3,425	2,912	513	1.84
Navarra, Comunidad Foral de	4,868	4,813	54	10,169	9,970	199	2.09
País Vasco	3,970	3,726	245	9,023	8,482	541	2.27
Rioja, La	1,234	1,221	14	2,211	2,198	14	1.79
Ceuta	-	-	-	-	-	-	-
Melilla	-	-	-	-	-	-	-
Annual rate	14.59	13.94	20.93	19.53	21.42	13.06	4.31
Cumulative annual rate	15.90	15.84	16.46	22.00	25.40	10.42	5.26

2. Open rural establishments, bed-places, occupancy rates and employed personnel by Autonomous City and Community

Autonomous Communities	Estimated open rural establishments	Estimated bed-places	Occupancy rate			Employed personnel
			Of bed-places	Of bed-places at weekend	Of bedrooms	
TOTAL	14,243	128,972	9.00	21.34	11.52	19,385
Andalucía	1,439	12,512	9.63	21.46	13.21	2,000
Aragón	1,111	8,608	6.37	16.80	7.63	1,228
Asturias, Principado de	1,125	10,177	3.60	8.31	5.03	1,396
Balears, Illes	104	1,875	27.76	29.36	31.67	477
Canarias	644	3,992	35.83	34.58	54.68	888
Cantabria	266	4,210	10.90	25.81	12.02	379
Castilla y León	3,189	27,291	8.34	23.27	10.58	4,388
Castilla-La Mancha	1,386	12,032	5.79	17.00	7.33	1,781
Cataluña	1,800	14,448	9.38	28.80	10.48	2,376
Comunitat Valenciana	910	8,692	5.77	11.82	11.20	1,351
Extremadura	515	6,242	9.61	27.22	12.52	727
Galicia	418	5,199	5.72	14.01	6.08	593
Madrid, Comunidad de	241	3,572	12.90	34.10	17.14	463
Murcia, Región de	131	1,848	6.62	16.48	8.44	218
Navarra, Comunidad Foral de	586	4,374	8.29	26.64	8.43	695
País Vasco	270	2,904	11.05	20.01	14.50	298
Rioja, La	106	996	7.91	24.72	8.28	127
Ceuta	-	-	-	-	-	-
Melilla	-	-	-	-	-	-
Annual rate	0.58	-0.17	19.62	23.10	18.13	-0.36
Cumulative annual rate	1.01	0.09	21.64	22.27	18.65	-0.38

3. Number of travellers, overnight stays and average stay in Provinces with the greatest number of overnight stays¹

Provinces	Number of travellers			Number of overnight stays			Average stay
	Total	Residents In Spain	Residents abroad	Total	Residents In Spain	Residents abroad	
Santa Cruz de Tenerife	5,380	1,119	4,261	30,262	5,151	25,111	5.63
Ávila	8,432	8,352	80	17,571	17,403	168	2.08
Girona	9,127	8,682	446	16,282	15,261	1,020	1.78
Cáceres	7,325	6,988	336	14,287	13,381	906	1.95
Salamanca	5,544	5,202	342	11,775	10,947	828	2.12
Segovia	6,609	6,484	125	11,346	11,131	215	1.72
Málaga	1,583	1,419	164	11,125	6,484	4,641	7.03
Palmas, Las	2,291	626	1,665	10,175	1,755	8,420	4.44
Barcelona	4,909	4,665	245	10,052	9,061	991	2.05
Lleida	4,700	4,579	122	9,742	8,542	1,200	2.07
Huesca	3,367	3,230	137	8,722	8,220	502	2.59
Alicante\Alacant	1,466	923	542	6,660	2,296	4,364	4.54
Albacete	2,834	2,834	-	5,869	5,869	-	2.07
Gipuzkoa	2,341	2,185	156	5,548	5,183	365	2.37
Huelva	2,337	2,065	272	5,381	4,656	725	2.30

4. Open rural establishments, bed-places, occupancy rates and employed personnel in Provinces with the highest number of overnight stays¹

Provinces	Estimated open rural establishments	Estimated bed-places	Occupancy rate			Employed personnel
			Of bed-places	Of bed-places at weekend	Of bedrooms	
Santa Cruz de Tenerife	511	2,960	36.10	33.04	55.38	696
Ávila	767	5,651	11.09	30.60	15.06	1,147
Girona	607	4,980	11.66	38.02	13.29	893
Cáceres	434	5,273	9.66	27.89	12.75	599
Salamanca	472	3,647	11.51	30.44	14.25	625
Segovia	406	3,652	11.06	32.68	12.79	548
Málaga	507	3,298	12.04	19.79	18.32	631
Palmas, Las	133	1,032	35.03	39.02	52.58	192
Barcelona	457	3,933	9.06	27.14	9.57	617
Lleida	517	3,654	9.50	26.29	10.62	623
Huesca	587	4,280	7.25	17.42	7.83	632
Alicante\Alacant	191	1,864	12.75	18.92	23.83	271
Albacete	570	3,631	5.75	18.16	6.65	650
Gipuzkoa	138	1,560	12.65	20.25	16.65	159
Huelva	151	1,163	16.52	37.85	18.62	266

¹ Provinces belonging to uniprovincial Autonomous Communities have not been included because they are reflected in previous tables.

5. Number of travellers, overnight stays, average stay, capacity and occupancy rates in areas with the highest number of overnight stays

Areas	Number of travellers		Number of overnight stays			Capacity		Occupancy rate		
	Residents In Spain	Residents abroad	Residents In Spain	Residents abroad	Average stay	Estimated open rural establishments	Estimated bed-places	Of bed-places	Of bed-places at weekend	Of bedrooms
Pirineus	9,603	558	17,570	2,202	1.95	760	5,805	12.13	36.30	14.12
Isla de Tenerife	741	2,847	1,620	13,989	4.35	120	1,215	44.94	42.35	62.14
Isla de Mallorca	613	2,693	1,433	12,723	4.28	96	1,752	28.83	29.90	32.89
P.Nacional Teide	585	2,175	1,272	10,938	4.42	78	857	49.59	45.28	69.60
Isla de La Palma	285	950	2,916	7,977	8.82	281	1,161	33.50	28.30	57.75
Pirineo Navarro	4,460	55	9,049	202	2.05	531	3,895	8.47	27.30	8.67
Pirineo Aragonés	3,056	121	8,007	460	2.66	541	3,999	7.54	18.53	8.15
Costa Brava	4,013	23	7,034	46	1.75	334	2,769	9.11	30.69	9.48
Isla Gran Canaria	495	997	1,355	4,715	4.07	105	696	31.01	35.57	53.33
P.Nacional Taburiente	217	545	1,858	4,082	7.80	166	688	30.86	27.03	54.13
Costa Barcelona	1,495	205	2,819	845	2.15	121	963	13.40	31.34	13.47
P.Natural Sierra de Grazalema	1,416	136	3,104	434	2.28	132	917	13.78	36.09	19.36
Isla de Lanzarote	81	505	247	3,096	5.70	20	264	44.89	48.03	53.39
P.Natural Sierra de Aracena y Picos de Aroche	1,523	171	2,789	523	1.95	112	736	16.06	38.46	18.77
Isla de La Gomera	47	442	314	2,885	6.55	73	441	25.78	27.54	39.03

6. Number of travellers, overnight stays, average stay, capacity, occupancy rates and employed personnel per rural house by Autonomous City and Community²

Autonomous Communities	Number of travellers		Number of overnight stays			Capacity		Occupancy rate		Employed personnel
	Residents In Spain	Residents abroad	Residents In Spain	Residents abroad	Average stay	Estimated open rural establish.	Estimated bed-places	Of bed-places at weekends		
TOTAL	87,725	7,697	181,608	43,219	2.36	12,231	96,471	8.31	20.70	15,640
Andalucía	10,770	1,265	25,435	8,383	2.81	1,439	12,512	9.63	21.46	2,000
Aragón	4,975	97	9,788	251	1.98	845	6,440	5.56	16.02	932
Asturias, Principado de	1,199	-	3,027	-	2.52	739	4,594	2.35	5.04	837
Balears, Illes	376	926	953	3,070	3.09	41	554	25.94	30.55	98
Canarias	706	2,944	4,796	20,415	6.91	614	3,140	28.61	26.49	737
Cantabria	1,820	15	3,874	30	2.13	119	1,767	7.87	22.36	167
Castilla y León	18,985	286	41,013	1,422	2.20	2,796	19,267	7.85	22.41	3,486
Castilla-La Mancha	9,526	102	18,885	156	1.98	1,358	11,513	5.89	17.31	1,749
Cataluña	19,215	939	34,689	3,390	1.89	1,800	14,448	9.38	28.80	2,376
Comunitat Valenciana	3,328	551	7,932	4,368	3.17	875	6,919	6.35	12.24	1,262
Extremadura	3,117	221	5,611	605	1.86	306	2,986	7.42	22.06	369
Galicia	4,129	100	5,798	258	1.43	303	3,582	6.02	14.41	400
Madrid, Comunidad de	1,115	36	2,414	54	2.14	72	713	12.34	31.47	104
Murcia, Región de	998	42	1,981	364	2.25	119	1,523	5.50	16.05	173
Navarra, Comunidad Foral de	4,813	54	9,970	199	2.09	586	4,374	8.29	26.64	695
País Vasco	1,433	105	3,244	242	2.27	113	1,144	10.83	22.35	126
Rioja, La	1,221	14	2,198	14	1.79	106	996	7.91	24.72	127
Ceuta	-	-	-	-	-	-	-	-	-	-
Melilla	-	-	-	-	-	-	-	-	-	-

² To facilitate the comparability between data from different Autonomous Communities (and because of the different regulation and different characteristics), a group called rural house has been created, with those establishments with similar typology (location, capacity, etc...).

The variables included in the previous table have been estimated with that type of establishments.

7. Travellers and overnight stays by country of residence

Results by countries	Travellers		Overnight stays	
	Total	%	Total	%
TOTAL	143,951	100.00	325,866	100.00
Residents Spain	129,875	90.22	256,223	78.63
Residents abroad	14,076	9.78	69,642	21.37
Total Residents abroad	14,076	100.00	69,642	100.00
Total Residents in EU (excluding Spain)	12,286	87.28	63,893	91.75
- Germany	4,453	31.64	31,435	45.14
- Belgium	384	2.73	1,739	2.50
- France	1,940	13.78	6,228	8.94
- Italy	383	2.72	1,340	1.92
- Netherlands	1,110	7.89	5,823	8.36
- Portugal	645	4.58	1,604	2.30
- United Kingdom	2,491	17.70	11,186	16.06
Switzerland	364	2.58	1,694	2.43
Other European countries	1,399	9.94	6,469	9.29
United States of America	299	2.12	911	1.31
Other countries	607	4.31	1,212	1.74

Tourist Accommodation Occupancy Survey Hostels Occupancy Survey (HOS) February 2015 Provisional data

1. Travellers, overnight stays and average stay by Autonomous Cities and Communities

Autonomous cities and communities	Travellers			Overnight stays			Average stay
	Total	Residents in Spain	Residents abroad	Total	Residents in Spain	Residents abroad	
TOTAL	43,995	32,124	11,871	101,439	68,185	33,254	2.31
Andalucía	8,493	7,318	1,175	16,578	13,945	2,633	1.95
Aragón	2,302	2,103	199	6,466	5,522	943	2.81
Asturias, Principado de	90	86	4	185	167	18	2.06
Balears, Illes	-	-	-	-	-	-	-
Canarias	-	-	-	-	-	-	-
Cantabria	603	599	4	908	903	5	1.51
Castilla y León	2,778	2,245	533	5,532	4,337	1,195	1.99
Castilla - La Mancha	1,507	1,314	193	2,664	2,435	229	1.77
Cataluña	17,417	9,719	7,698	40,692	21,028	19,664	2.34
Comunitat Valenciana	2,134	1,737	397	10,484	5,899	4,585	4.91
Extremadura	395	353	42	542	500	42	1.37
Galicia	80	78	2	131	124	7	1.64
Madrid, Comunidad de	2,543	2,076	467	4,640	3,838	802	1.82
Murcia, Región de	-	-	-	-	-	-	-
Navarra, Comunidad Foral de	862	827	35	2,419	2,273	146	2.81
País Vasco	3,778	2,980	798	7,774	5,683	2,091	2.06
Rioja, La	486	453	33	866	701	165	1.78
Ceuta	-	-	-	-	-	-	-
Melilla	-	-	-	-	-	-	-
Annual rate	1.74	2.74	-0.88	4.39	3.20	6.90	2.60
Cumulative annual rate	13.16	9.29	23.77	15.59	11.42	24.85	2.15

2. Open establishments, capacity, occupancy and number of staff by autonomous cities and communities

Autonomous cities and communities	Capacity		Occupancy rate		Employed personnel
	Estimated open establishments	Estimated bed-places	Of bed-places	Of bed-places at weekend	
TOTAL	181	21,336	16.98	24.23	1,397
Andalucía	12	2,856	20.73	31.26	166
Aragón	15	1,123	20.56	20.02	56
Asturias, Principado de	4	270	2.45	6.16	35
Balears, Illes	-	-	-	-	-
Canarias	-	-	-	-	-
Cantabria	8	451	7.19	18.18	26
Castilla y León	23	2,166	9.12	16.18	136
Castilla - La Mancha	22	2,214	4.30	8.41	67
Cataluña	33	5,391	26.96	42.51	349
Comunitat Valenciana	9	1,554	24.09	14.93	99
Extremadura	9	586	3.30	9.75	44
Galicia	4	521	0.90	0.77	16
Madrid, Comunidad de	6	535	30.99	44.64	167
Murcia, Región de	-	-	-	-	-
Navarra, Comunidad Foral de	7	615	14.05	8.62	52
País Vasco	20	2,586	10.73	15.65	142
Rioja, La	7	307	10.07	19.54	11
Ceuta	-	-	-	-	-
Melilla	-	-	-	-	-
Annual rate	4.58	8.01	-3.35	-9.45	2.73
Cumulative annual rate	3.87	8.40	5.99	-4.17	1.26

3. Travellers and overnight stays by countries of residence

Countries	Travellers		Overnight stays		Average stay
	Total	%	Total	%	
TOTAL	43,995	100.00	101,439	100.00	2.31
Residents in Spain	32,124	73.02	68,185	67.22	2.12
Residents abroad	11,871	26.98	33,254	32.78	2.80
TOTAL residents abroad	11,871	100.00	33,254	100.00	2.80
TOTAL residents in E.U. (excluding Spain)	8,734	73.58	22,948	69.01	2.63
- Germany	1,266	10.66	2,921	8.78	2.31
- Belgium	256	2.16	669	2.01	2.61
- France	3,073	25.89	7,823	23.52	2.55
- Italy	1,337	11.27	4,205	12.64	3.14
- Netherlands	288	2.42	982	2.95	3.42
- Portugal	610	5.14	1,310	3.94	2.15
- United Kingdom	1,058	8.91	2,373	7.14	2.24
Switzerland	106	0.89	278	0.84	2.62
Other European countries	1,453	12.24	4,156	12.50	2.86
United States of America	688	5.80	3,979	11.97	5.78
Other countries	1,735	14.62	4,557	13.70	2.63

HOLIDAY DWELLING PRICE INDEX (HDPI)

February 2015

Provisional data

National general index and breakdown by rates

	Index	Annual variation rate
TOTAL	114.37	5.40
Normal	113.24	4.92
Weekend	116.86	1.67
Tour-operators and travel agencies	115.72	6.00

National general index and breakdown by modalities

	Index	Annual variation rate
TOTAL	114.37	5.40
Studio	113.18	4.09
Dwellings 2/4 bedplaces	114.22	6.33
Dwellings 4/6 bedplaces	116.90	2.34

Tourist Campsite Price Index (TCSPI). 2002 Base

February 2015

Provisional data

National general index and breakdown by rates

	Index	Annual variation rate
TOTAL	146.61	0.22
Normal rate	139.38	-0.04
Special rate for stays up to one month	143.76	-0.57
Special rate for stays longer than one month	150.28	-0.66
Tarifa bungalow*	102.26	2.27

National general index and breakdown by categories

	Index	Annual variation rate
TOTAL	146.61	0.22
Luxury and first	154.12	0.23
Second	143.16	0.30
Third	139.24	-1.07

*2014 Base

TCSPI (ANNEX OF TABLES) - FEBRUARY 2015

31st march 2015

**Rural Tourism Accommodation Price Index (RTAPI)
February 2015**

Provisional data

**General Autonomous Cities and Communities
and national indices**

	Index	Annual variation rate
TOTAL	129.99	0.91
Andalucía	145.54	4.35
Aragón	153.15	4.14
Asturias, Principado de	126.97	-0.31
Balears, Illes	115.53	1.26
Canarias	111.04	-1.38
Cantabria	148.68	9.13
Castilla y León	132.91	1.72
Castilla - La Mancha	124.63	6.98
Cataluña	124.57	-7.86
Comunitat Valenciana	130.94	1.84
Extremadura	114.93	1.36
Galicia	125.06	-0.22
Madrid, Comunidad de	142.92	2.49
Murcia, Región de	131.36	-4.18
Navarra, Comunidad Foral de	173.31	1.62
País Vasco	146.49	4.36
Rioja, La	129.45	-6.94
Ceuta	-	-
Melilla	-	-

National general index and breakdown by rates

	Index	Annual variation rate
TOTAL	129.99	0.91
Normal	129.80	0.85
Weekend	126.30	0.93

National general index and breakdown by rent modality

	Index	Annual variation rate
TOTAL	129.99	0.91
Shared use (in case of per room rent modality)	117.46	1.76
Full use (rent of entire dwelling)	136.92	0.51