

31 May 2012

**Non-Hotel Tourist Accommodation Occupancy Survey**  
April 2012. *Provisional data*

**Overnight stays in non-hotel tourist accommodation decrease 7.7% in April, as compared with the same month of 2011**

Overnight stays in non-hotel tourist accommodation (holiday dwellings, campsites and rural tourism establishments) exceeded 6.3 million in April, 7.7% less than in the same month of 2011. Overnight stays by resident travellers decreased –1.8% and by non-residents decreased –11.9%. The average stay increased 0.7%, standing at 4.8 overnights per traveller.

During first four months of the year, overnight stays decreased 1.0%, as compared with the same period the previous year.

Travellers and overnight stays in collective non-hotel tourist accommodation during the month of April were:

April 2012	Travellers	Overnight stays
Residents in Spain	820,870	2,834,455
EU (not including Spain)	434,116	3,060,255
Rest of the world	63,625	418,133
<b>TOTAL</b>	<b>1,318,611</b>	<b>6,312,843</b>

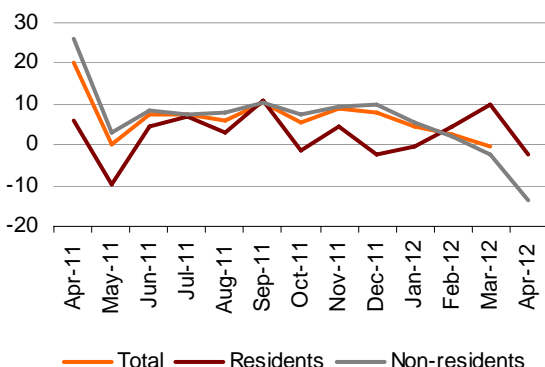
**Holiday Dwellings**

Overnight stays in holiday dwellings decreased 11.0% in April. Overnight stays of residents decreased 2.6%, and those of non-residents decreased 13.8%.

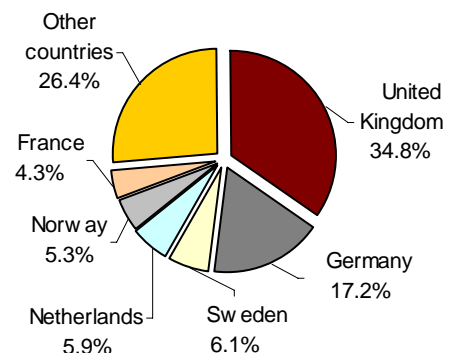
The average stay increased 0.8%, standing at 6.2 overnights stays per traveller.

In April, 29.7% of the total available bedplaces for holiday dwellings were occupied, 11.3% less than in April 2011. The weekend occupancy rate by bedplaces stood at 32.6%, with a decrease of 7.3%.

**Interannual rates of overnight stays in % in holiday dwellings**



**Overnight stays in holiday dwellings of non-resident travellers by country of origin in %**



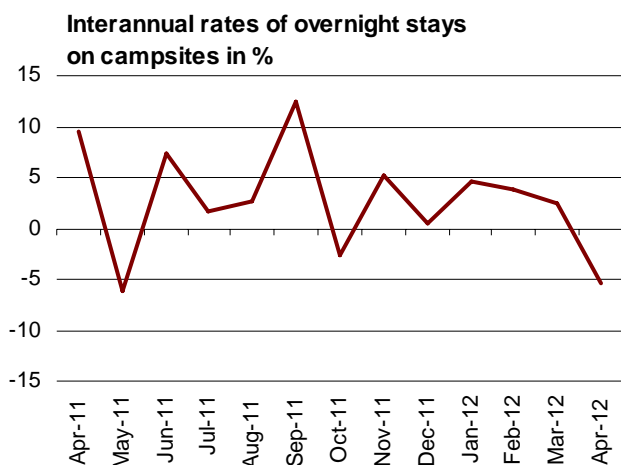
Non-resident overnight stays in holiday dwellings represented 73.0% of the total. The United Kingdom was the main country of origin, with 939,617 overnight stays, 17.1% less than in April last year. The following country of origin was Germany, with 465,049 overnight stays, 13.7% less.

Canarias was the preferred holiday dwelling destination, with a decrease of 17.3% and Andalucía, with a decrease of 1.8%. Comunidad de Madrid presented the highest occupancy rate with 66.1% of the dwellings offered.

By tourist area, the island of Tenerife was the preferred destination in holiday dwellings, with 665,620 million overnight stays, and an occupancy of 60.6% of the dwellings offered.

The tourist sites with the greatest number of overnight stays were San Bartolomé de Tirajana, Arona and Tías.

## Tourist Campsites



The overnight stays in tourist campsites registered an interannual decrease of 5.4%, in April. Overnight stays by resident travellers decreased 5.5%, and non-resident travellers decreased 5.3%.

29.0% of the offered lots were occupied, 6.4% less. The weekend occupancy rate by lot reached 31.7%, with an interannual decrease of 4.0%.

35.7% of the overnight stays on tourist campsites were by non-residents. The United Kingdom was the main country of origin, with 28.7% of the overnight stays by non-residents, 3.8% less than in April 2011.

Cataluña was the preferred destination for camping, with 740,815 overnight stays, 1.4% less. La Rioja reached the highest occupancy rate on campsites, with 60.3% of the lots offered.

By tourist area, Costa Brava was the preferred destination for camping, with 244,121 overnight stays. Costa Blanca reached the highest occupancy rate, with 52.0% of the lots offered.

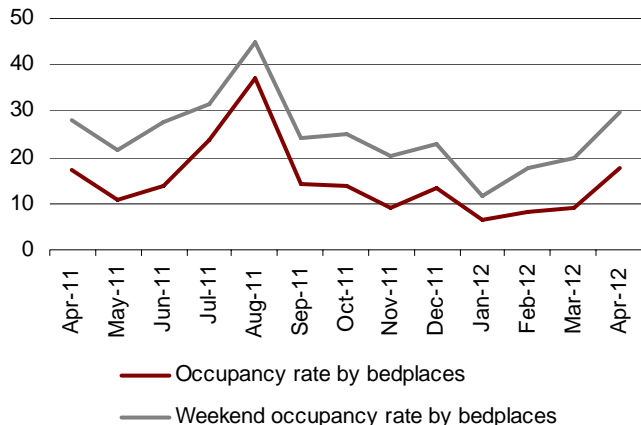
The tourist sites with the most overnight stays were Benidorm, Vilanova i la Geltrú y Castelló d'Empúries.

## Rural Tourism Accommodation

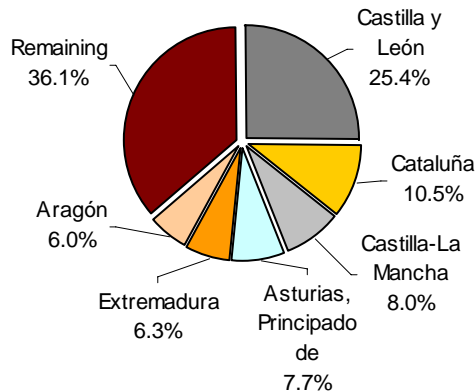
Overnight stays in rural tourism accommodation presented an interannual increase of 5.5%, in April. Resident overnight stays growth 7.0%, whereas those of non-residents dropped 1.8%.

17.8% of the bedplaces in rural tourism accommodation were occupied, representing a 2.1% increase. The weekend occupancy rate stood at 29.7%, 5.1% more.

**Evolution of occupancy rates by bedplaces and by bedplaces on weekends in rural tourism accommodation**



**Distribution of overnight stays of travellers resident in Spain in rural tourism accommodation as a %**



Castilla y León was the preferred destination in rural tourism accommodation, with 175,673 overnight stays, 14.4% more than in April 2011. Illes Balears reached the highest occupancy rate, with 39.2% of the offered bedplaces.

By tourist area, the island of Mallorca was the main destination, with 50,832 overnight stays and an occupancy of 42.0% of the offered bedplaces.

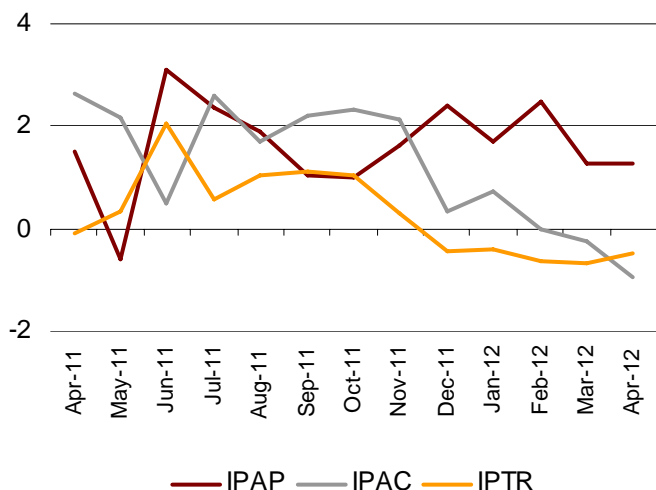
### Price Index Evolution

The Holiday Dwelling Price Index registered an increase of 1.3% in April, the same rate recorded than the previous month. The *Tour-operators and travel agencies* rate, which carried the greatest weight in the weighting structure for this month (56.6%), registered an increase of 1.5%.

The Tourist Campsite Price Index registered a decrease of 1.0%, as compared with April 2011. The *normal* rate, which had the greatest weight in the weighting structure for this month (59.1%), presented a decrease of 0.2%.

The Rural Tourism Accommodation Price Index experienced an interannual decrease of 0.5% in April. The *weekend* rate, which accounted for 63.3% of the total weight, decreased 1.1%.

**Price Indexes. Interannual variation rates**



## Evolution of travellers and overnight stays in all Spanish collective tourist accommodation

Overnight stays in Spanish collective tourist accommodation (hotels, holiday dwellings, campsites and rural tourism accommodation) registered an interannual decrease of 5.4% in April.

Overnight stays by residents decreased 4.3%, and non-resident stays 6.3%. The average stay decreased 0.8%, standing at 3.3 nights per traveller.

Travellers and overnight stays in collective tourist accommodation were:

April 2012	Hotels	Holiday dwellings	Campsites	Rural T.	Total
<b>Travellers</b>	7,129,449	597,622	444,240	276,750	8,448,061
Residents	3,886,422	240,011	336,117	244,742	4,707,292
Non-residents	3,243,027	357,611	108,122	32,008	3,740,768
<b>Overnight stays</b>	21,543,489	3,704,230	1,829,693	778,920	27,856,332
Residents	9,382,948	1,001,338	1,176,458	656,659	12,217,403
Non-residents	12,160,540	2,702,892	653,235	122,261	15,638,928

Of the total overnight stays in collective tourist accommodation in the month of April, 77% were accounted for at hotels, and 23% were at non-hotel tourist accommodation.

The main countries of origin in overall regulated tourist accommodation were Germany (with 23.3% of the total number of non-resident overnight stays), the United Kingdom (22.3%) and France (9.6%).

Canarias was the preferred destination regarding overall tourist accommodation, with more than 6.4 million overnight stays (12.4% less than in April 2011). It was followed by Cataluña, with more than 4.9 million overnight stays (0.2% more) and Andalucía, with more than 4.5 million overnight stays (2.9% less).

## Tourist Accommodation Occupancy Survey (Holiday Dwellings)

April 2012

Provisional data

### 1. Travellers, overnight stays and average stay by Autonomous Cities and Communities

Autonomous Communities	Number of travellers			Number of overnight stays			Average stay
	Total	Residents in Spain	Residents abroad	Total	Residents in Spain	Residents abroad	
<b>TOTAL</b>	597,622	240,011	357,611	3,704,230	1,001,338	2,702,892	6.20
Andalucía	100,630	44,597	56,032	468,865	160,826	308,039	4.66
Aragón	11,108	10,057	1,051	38,118	34,837	3,281	3.43
Asturias, Principado de	3,340	3,145	194	11,295	10,823	471	3.38
Balears, Illes	30,774	2,110	28,663	180,458	10,518	169,940	5.86
Canarias	253,142	58,975	194,167	2,045,296	264,634	1,780,662	8.08
Cantabria	8,429	7,675	755	26,496	23,873	2,624	3.14
Castilla y León	5,706	5,379	327	19,068	17,634	1,434	3.34
Castilla-La Mancha	5,917	5,695	222	18,061	17,153	908	3.05
Cataluña	52,073	24,557	27,516	269,432	138,585	130,847	5.17
Comunitat Valenciana	72,700	40,245	32,455	413,709	182,151	231,558	5.69
Extremadura	3,504	2,926	578	8,341	7,361	980	2.38
Galicia	5,120	4,607	513	18,524	16,486	2,038	3.62
Madrid, Comunidad de	31,453	18,505	12,948	124,085	65,404	58,681	3.95
Murcia, Región de	4,164	3,437	727	29,152	22,575	6,577	7.00
Navarra, Comunidad Foral de	4,268	3,736	531	14,573	12,920	1,653	3.41
País Vasco	2,891	1,990	901	11,477	8,375	3,102	3.97
Rioja, La	2,402	2,373	29	7,279	7,183	96	3.03
Ceuta	-	-	-	-	-	-	-
Melilla	-	-	-	-	-	-	-
Interannual rate	-11.66	-7.17	-14.44	-11.03	-2.56	-13.81	0.71
Cumulative interannual rate	-2.68	-1.42	-3.22	-1.53	1.92	-2.22	1.18

### 2. Capacity, occupancy and number of staff by Autonomous Cities and Communities

Autonomous Communities	Capacity		Level of occupancy				Employed personnel
	Estimated bedplaces	Estimated Holiday dwelling	Per bedplaces	Per bedplaces at weekenc	Per Holiday dwelling	Per Holiday dwelling at weekenc	
<b>TOTAL</b>	414,872	112,010	29.67	32.61	44.94	47.97	20,105
Andalucía	55,257	14,305	28.25	32.24	42.87	48.22	2,757
Aragón	5,774	1,364	21.90	31.30	32.18	41.94	413
Asturias, Principado de	3,905	994	9.60	12.91	13.68	17.46	277
Balears, Illes	18,148	5,106	33.04	36.29	46.13	50.05	1,091
Canarias	171,371	53,727	39.59	40.92	54.61	55.53	10,023
Cantabria	4,097	1,110	21.45	31.19	31.65	43.08	271
Castilla y León	3,466	769	18.57	30.35	29.19	40.14	275
Castilla-La Mancha	4,556	1,091	13.20	21.84	18.57	29.00	355
Cataluña	46,098	10,212	19.47	22.97	29.61	33.57	1,282
Comunitat Valenciana	76,730	15,666	17.97	21.08	30.05	34.16	1,744
Extremadura	1,337	345	20.74	26.97	27.13	33.57	137
Galicia	3,320	916	18.54	22.69	28.56	32.42	199
Madrid, Comunidad de	7,916	3,447	51.79	58.88	66.08	72.15	567
Murcia, Región de	8,872	1,961	10.95	12.09	19.30	21.02	181
Navarra, Comunidad Foral de	1,733	403	27.88	36.80	40.80	48.97	398
País Vasco	1,409	396	26.91	32.83	42.69	48.86	76
Rioja, La	883	197	27.37	44.47	33.65	52.74	60
Ceuta	-	-	-	-	-	-	-
Melilla	-	-	-	-	-	-	-
Interannual rate	0.51	-1.12	-11.32	-7.32	-8.82	-6.88	-4.47
Cumulative interannual rate	0.44	-0.47	-2.78	-3.07	-0.87	-1.52	-0.75

### 3. Travellers, overnight stays, capacity, occupancy, total number of staff with greater number of overnight stays \*

Provinces	Number of travellers		Overnight stays		Average stay	Capacity		Level of occupancy			Employed personnel
	Residents in Spain	Residents abroad	Residents in Spain	Residents abroad		Estimated bed-places	Estimated holiday dwelling	Per bed-places	Per Holiday dwelling	Per Holiday dwelling at weekender	
Palmas, Las	36,501	122,576	167,520	1,152,884	8.30	114,926	36,305	38.04	52.84	53.04	6,213
Santa Cruz de Tenerife	22,474	71,591	97,113	627,778	7.71	56,444	17,422	42.73	58.29	60.70	3,810
Alicante\Alacant	25,471	26,798	125,150	200,749	6.24	52,530	10,928	20.68	34.37	38.19	1,279
Málaga	13,051	41,974	57,166	261,993	5.80	29,208	7,491	36.50	53.90	58.02	1,635
Barcelona	6,202	15,701	71,830	69,749	6.46	8,652	2,507	54.41	73.20	77.92	424
Tarragona	9,995	6,053	36,172	27,885	3.99	14,067	2,671	15.13	19.13	25.27	288
Girona	6,211	5,744	22,662	32,652	4.63	21,234	4,617	8.64	12.94	15.08	477
Valencia\València	7,307	4,586	26,339	21,793	4.05	9,785	1,990	16.34	28.62	32.99	262
Sevilla	6,607	5,995	22,933	17,113	3.18	3,383	1,131	38.97	59.08	69.36	173
Castellón\Castelló	7,467	1,072	30,662	9,017	4.65	14,416	2,748	9.17	13.92	19.01	203
Almería	8,502	958	32,242	6,704	4.12	8,254	1,959	15.73	31.29	33.14	191
Granada	4,838	3,614	15,084	10,752	3.06	4,527	1,229	18.92	24.72	29.71	296
Huesca	4,948	12	18,643	61	3.77	3,388	746	18.30	25.07	34.20	245
Cádiz	4,147	1,648	11,474	6,454	3.09	4,238	1,171	14.05	19.64	27.63	271
Huelva	2,689	188	9,437	1,138	3.68	2,698	601	13.07	19.65	30.76	33

### 4. Travellers, overnight stays, capacity, occupancy, total number of staff from tourist areas with greater number of overnight stays

Tourist Areas	Number of travellers		Overnight stays		Average stay	Capacity		Level of occupancy			Employed personnel
	Residents in Spain	Residents abroad	Residents in Spain	Residents abroad		Estimated bed-places	Estimated holiday dwelling	Per bed-places	Per Holiday dwelling	Per Holiday dwelling at weekender	
Isla de Tenerife	19,114	67,625	81,793	583,827	7.67	49,732	15,123	44.54	60.64	63.15	3,284
Isla de Gran Canaria	21,348	55,664	88,511	562,305	8.45	56,496	18,518	38.28	52.10	52.29	2,994
Isla de Lanzarote	10,902	48,301	59,575	408,865	7.91	41,949	12,543	36.99	53.42	53.87	2,344
Costa del Sol	11,900	40,873	52,765	256,261	5.86	27,521	7,102	37.42	55.03	59.05	1,560
Costa Blanca	23,888	25,547	115,694	190,547	6.19	48,534	10,229	21.03	34.89	38.65	1,209
Isla de Fuerteventura	4,250	18,611	19,435	181,714	8.80	16,481	5,244	39.91	54.08	53.70	875
Isla de Mallorca	993	28,159	4,459	162,476	5.73	16,320	4,561	33.98	47.63	51.91	1,044
Costa Daurada	9,725	6,053	35,023	27,808	3.98	13,041	2,472	16.01	20.09	26.54	267
Barcelona	3,684	14,006	11,626	51,109	3.55	4,342	1,095	47.90	65.25	70.58	308
Catalunya Central	462	23	49,482	10,048	30.00	2,465	872	80.50	95.40	96.45	43

### 5. Travellers, overnight stays, capacity, occupancy, total number of staff from tourist sites with greater number at overnights stays

Tourist sites	Number of travellers		Overnight stays		Average stay	Capacity		Level of occupancy			Employed personnel
	Residents in Spain	Residents abroad	Residents in Spain	Residents abroad		Estimated bed-places	Estimated holiday dwelling	Per bed-places	Per Holiday dwelling	Per Holiday dwelling at weekender	
San Bartolomé de Tirajana	18,152	37,521	78,242	377,657	8.19	38,471	12,407	39.36	54.57	55.35	2,043
Arona	3,642	33,287	14,230	280,299	7.98	20,987	6,518	46.76	63.08	64.13	1,361
Tías	5,743	25,767	26,715	215,700	7.69	22,281	6,935	35.98	50.28	50.70	1,091
Adeje	6,112	22,190	23,237	188,986	7.50	15,039	4,275	46.93	66.19	70.49	955
Mogán	2,669	17,270	8,743	175,404	9.24	16,586	5,474	36.93	49.00	48.13	859
Benidorm	7,660	16,813	32,251	115,242	6.03	15,535	3,751	31.65	50.30	55.80	594
Teguise	3,261	12,019	20,920	100,406	7.94	11,234	3,410	35.83	55.95	56.48	687
Madrid	18,216	12,744	60,909	56,059	3.78	7,306	3,200	52.85	66.76	72.99	503
Puerto de la Cruz	7,473	4,468	37,504	42,500	6.70	6,722	2,582	39.58	49.59	51.64	498
Yaiza	1,116	6,712	7,593	58,218	8.41	5,475	1,495	39.84	55.18	54.35	262

\* Provinces belonging to uniprovincial Autonomous Communities have not been included because they are reflected in previous tables.

**6. Percentage distribution of Spanish travellers by Autonomous City and Community of origin**

Origin Destination	Total	Andalucía	Aragón	Asturias, P. de	Balears (Illes)	Canarias	Cantabria	Castilla y León	Castilla-La Mancha	Cataluña
TOTAL	100.00	14.23	2.37	1.39	0.84	15.45	0.86	3.14	2.63	13.50
Andalucía	100.00	47.69	0.72	0.70	0.36	0.59	0.49	2.34	3.66	6.86
Aragón	100.00	2.02	20.54	0.69	0.15	0.42	0.31	1.21	1.90	24.50
Asturias, P. de	100.00	0.83	0.06	12.30	0.25	-	3.54	9.58	2.41	3.53
Balears, Illes	100.00	7.54	0.00	1.37	34.41	-	-	0.38	-	24.88
Canarias	100.00	12.32	0.20	0.31	0.05	60.14	0.74	0.58	0.56	2.13
Cantabria	100.00	1.84	2.29	3.03	1.10	1.15	1.14	13.20	2.76	5.37
Castilla y León	100.00	1.64	0.91	1.07	0.95	0.15	1.97	13.45	3.93	3.87
Castilla - La Mancha	100.00	3.14	1.47	0.58	0.21	0.00	0.18	1.97	18.40	5.58
Cataluña	100.00	2.25	3.67	0.39	1.46	0.47	0.57	1.09	0.96	65.48
Comunitat Valenciana	100.00	2.19	2.60	0.57	0.41	0.23	0.70	2.79	3.31	9.99
Extremadura	100.00	10.45	1.38	2.06	0.76	-	1.65	10.85	5.36	7.42
Galicia	100.00	2.41	0.13	8.26	0.17	0.35	1.30	10.45	1.18	3.12
Madrid, Comunidad de	100.00	13.39	3.33	4.68	2.00	4.93	1.99	6.85	2.59	12.24
Murcia, Región de	100.00	5.52	0.79	6.22	0.29	0.06	0.52	1.97	7.19	5.21
Navarra, C. Foral de	100.00	5.87	2.82	2.34	-	1.41	1.01	2.97	0.66	15.07
País Vasco	100.00	3.25	3.12	3.05	0.23	1.11	1.21	9.25	2.81	19.45
Rioja, La	100.00	1.26	3.22	1.88	-	-	3.49	2.71	1.42	8.07
Ceuta	-	-	-	-	-	-	-	-	-	-
Melilla	-	-	-	-	-	-	-	-	-	-

(conclusión)

Origin Destination	Comunitat Valenciana	Extrema- dura	Galicia	Madrid, C. de	Murcia, Región de	Navarra, C. Foral de	País Vasco	Rioja, La	Ceuta	Melilla
TOTAL	10.98	1.27	2.79	20.96	1.88	1.48	5.41	0.57	0.14	0.09
Andalucía	8.15	2.64	1.03	18.04	3.40	0.55	1.83	0.33	0.30	0.34
Aragón	16.72	0.61	0.57	19.37	1.14	2.25	6.82	0.78	-	-
Asturias, P. de	0.00	0.42	4.45	30.92	0.44	3.90	23.90	0.99	-	-
Balears, Illes	4.62	0.41	1.30	20.06	2.27	-	2.77	-	-	-
Canarias	0.9	0.27	1.01	18.69	0.30	0.19	1.42	0.17	0.03	-
Cantabria	4.06	0.29	11.04	24.08	-	4.37	22.79	1.48	-	-
Castilla y León	3.02	1.66	4.88	49.21	1.80	1.64	9.31	0.19	0.07	0.26
Castilla - La Mancha	19.71	0.00	0.41	37.82	5.15	1.22	4.03	0.11	-	-
Cataluña	7.2	0.52	0.88	6.58	0.82	1.52	5.00	0.62	0.46	0.05
Comunitat Valenciana	35.46	0.63	1.01	30.51	2.16	1.32	5.17	0.95	0.00	0.00
Extremadura	6.12	11.13	2.48	28.10	1.10	2.61	8.25	-	-	0.28
Galicia	2.53	0.77	46.28	14.85	0.17	0.65	6.55	0.74	-	0.09
Madrid, Comunidad de	9.11	3.52	6.22	15.01	3.18	2.18	7.30	1.01	0.31	0.18
Murcia, Región de	13.34	2.56	1.98	36.27	15.19	0.85	1.90	0.16	-	-
Navarra, C. Foral de	2.58	0.75	2.22	19.86	0.77	20.31	20.37	0.99	-	-
País Vasco	2.51	0.40	3.77	21.73	0.23	4.91	21.68	1.31	-	-
Rioja, La	5.12	-	3.26	27.14	0.25	2.59	37.28	2.32	-	-
Ceuta	-	-	-	-	-	-	-	-	-	-
Melilla	-	-	-	-	-	-	-	-	-	-

## 7. Percentage distribution of overnight stays by Autonomous City and Community of origin

Origin Destination	Total	Andalucía	Aragón	Asturias, P. de	Balears, Illes	Canarias	Cantabria	Castilla y León	Castilla-La Mancha	Cataluña
TOTAL	100.00	12.58	2.52	2.21	1.21	15.62	1.06	2.65	2.37	15.71
Andalucía	100.00	45.88	0.76	1.65	0.31	0.66	0.61	2.63	3.50	7.06
Aragón	100.00	3.07	24.62	0.62	0.14	0.54	0.20	1.08	1.52	23.16
Asturias P. de	100.00	1.12	0.07	13.89	0.37	-	3.85	7.32	3.63	6.40
Balears, Illes	100.00	11.69	5.09	0.82	30.32	-	-	0.68	-	20.83
Canarias	100.00	11.55	0.55	0.32	0.10	56.63	0.68	0.75	0.82	3.20
Cantabria	100.00	1.73	2.95	3.46	1.22	1.13	8.31	10.52	2.56	4.17
Castilla y León	100.00	1.98	0.84	1.30	1.07	0.65	3.35	16.77	3.75	4.74
Castilla-La Mancha	100.00	3.93	1.68	1.91	0.14	0.17	0.16	3.09	19.75	7.48
Cataluña	100.00	1.87	3.74	0.21	3.97	0.49	0.97	0.46	0.50	67.87
Comunitat Valenciana	100.00	1.97	2.33	1.21	0.30	0.28	0.87	2.97	3.33	8.58
Extremadura	100.00	13.43	1.20	1.58	0.46	-	1.09	6.93	2.90	8.93
Galicia	100.00	8.66	0.38	7.90	0.15	0.78	1.32	10.00	0.99	3.45
Madrid, C. de	100.00	10.66	2.81	4.38	2.28	4.98	1.47	5.37	2.94	11.38
Murcia, Región de	100.00	4.02	0.35	36.31	0.12	0.01	0.30	1.51	4.16	3.22
Navarra, C. Foral de	100.00	5.59	2.22	1.29	-	1.83	0.95	1.31	0.59	16.70
País Vasco	100.00	5.46	3.18	2.65	0.05	1.31	1.41	8.00	2.46	19.90
Rioja, La	100.00	1.75	3.60	1.81	-	-	3.78	1.94	0.94	8.05
Ceuta	-	-	-	-	-	-	-	-	-	-
Melilla	-	-	-	-	-	-	-	-	-	-

(conclusión)

Origin Destination	Comunitat Valenciana	Extremadura	Galicia	Madrid, C. de	Murcia, Región de	Navarra, C. Foral de	País Vasco	Rioja, La	Ceuta	Melilla
TOTAL	9.31	1.00	2.61	21.46	1.61	1.46	5.80	0.64	0.09	0.07
Andalucía	5.48	2.17	1.51	21.39	2.14	0.74	2.81	0.24	0.18	0.28
Aragón	15.76	0.47	1.16	17.49	0.79	2.74	6.13	0.51	-	-
Asturias, P. de	3.18	0.37	3.86	31.36	0.77	3.60	19.49	0.73	-	-
Balears, Illes	4.8	0.25	0.90	19.80	1.41	-	3.39	-	-	-
Canarias	1.12	0.12	1.00	19.90	0.41	0.23	2.38	0.23	0.03	-
Cantabria	2.17	0.23	11.62	23.86	-	4.33	20.44	1.29	-	-
Castilla y León	3.16	1.20	4.93	42.25	2.02	1.44	9.14	0.35	0.16	0.90
Castilla - La Mancha	19.1	0.00	0.52	30.50	4.64	0.90	5.87	0.14	-	-
Cataluña	5.38	0.24	1.03	4.96	0.74	0.82	5.91	0.63	0.19	0.02
Comunitat Valenciana	30.44	1.01	1.40	31.72	2.15	2.19	7.79	1.46	0.00	0.00
Extremadura	4.24	13.05	1.42	31.14	2.41	2.68	8.42	-	-	0.11
Galicia	2.26	0.38	42.63	12.92	0.52	0.54	6.37	0.72	-	0.05
Madrid, C.de	7.31	3.08	6.45	24.54	1.94	2.46	6.46	1.07	0.32	0.10
Murcia, Región de	6.26	1.52	1.16	23.72	14.32	0.80	1.99	0.24	-	-
Navarra, C. Foral de	2.3	0.68	1.29	28.00	1.48	18.76	16.43	0.57	-	-
País Vasco	3.46	0.43	4.29	20.44	0.05	3.23	22.17	1.50	-	-
Rioja, La	6	-	3.62	29.50	0.42	2.46	33.93	2.21	-	-
Ceuta	-	-	-	-	-	-	-	-	-	-
Melilla	-	-	-	-	-	-	-	-	-	-



## 8. Travellers and overnight stays by countries of residence

Countries	Travellers		Overnight stays	
	Total	%	Total	%
TOTAL	597,622	100.00	3,704,230	100.00
Residents in Spain	240,011	40.16	1,001,338	27.03
Residents abroad	357,611	59.84	2,702,892	72.97
Total residents abroad	357,611	100.00	2,702,892	100.00
Total residents in E.U (excluding Spain)	307,143	85.89	2,328,211	86.14
- Germany	47,793	13.36	465,049	17.21
- Austria	1,759	0.49	17,240	0.64
- Belgium	6,071	1.70	43,687	1.62
-Denmark	8,399	2.35	77,970	2.88
- Finland	10,218	2.86	96,922	3.59
- France	25,288	7.07	116,944	4.33
- Greece	515	0.14	2,035	0.08
- Ireland	15,255	4.27	112,833	4.17
- Italy	11,092	3.10	49,864	1.84
- Luxembourg	606	0.17	5,058	0.19
- Netherlands	21,857	6.11	158,431	5.86
- Poland	3,716	1.04	20,952	0.78
- Portugal	3,916	1.10	17,963	0.66
- United Kingdom	127,387	35.62	939,617	34.76
- Czech Republic	1,085	0.30	8,071	0.30
- Sweden	17,633	4.93	165,305	6.12
- Other EU countries	4,552	1.27	30,271	1.12
Norway	13,011	3.64	144,532	5.35
Other european countries	13,887	3.88	98,308	3.64
United States of America	6,743	1.89	28,554	1.06
Rest of America	7,075	1.98	50,459	1.87
African countries	1,786	0.50	10,713	0.40
Other countries	7,966	2.23	42,114	1.56

## Tourist Accommodation Occupancy Survey Campsite Occupancy Survey (COS) April 2012

Provisional data

### 1. Travellers, overnight stays and average stay by category of establishment

Category	Number of travellers			Number of overnight stays			Average stay
	Total	Residents in Spain	Residents abroad	Total	Residents in Spain	Residents abroad	
TOTAL	444,240	336,117	108,122	1,829,693	1,176,458	653,235	4.12
Luxury and first-class	187,973	131,284	56,689	815,838	507,441	308,397	4.34
Second-class	214,991	170,834	44,157	898,582	575,138	323,445	4.18
Third-class	41,276	33,999	7,277	115,272	93,878	21,394	2.79
Interannual rate	-8.28	-10.69	0.12	-5.43	-5.50	-5.31	3.11
Cumulative interannual rate	-3.86	-7.01	5.41	-0.27	-3.06	1.86	3.73

### 2. Open establishments, capacity, occupancy and number of staff by category of establishments

Category	Estimated open establishments	Capacity		Occupied pitches	Occupancy rate per pitch	Weekend occupancy rate	Employed personnel
		Estimated bedplaces	Estimated pitches				
TOTAL	844	569,817	177,178	1,538,757	28.95	31.73	5,394
Luxury and first-class	242	246,310	75,235	605,989	26.85	29.57	2,423
Second-class	466	278,841	88,226	797,101	30.12	33.03	2,562
Third-class	135	44,667	13,717	135,667	32.97	34.38	408
Interannual rate	6.94	6.59	6.85	0.04	-6.37	-4.04	5.90
Cumulative interannual rate	3.46	4.14	4.25	1.77	-3.09	-3.33	4.56

### 3. Travellers, overnight stays and average stay by Autonomous Cities and Communities

Autonomous Communities	Number of travellers			Number of overnight stays			Average stay
	Total	Residents in Spain	Residents abroad	Total	Residents in Spain	Residents abroad	
TOTAL	444,240	336,117	108,122	1,829,693	1,176,458	653,235	4.12
Andalucía	56,191	30,225	25,966	231,112	122,816	108,296	4.11
Aragón	20,553	15,527	5,026	59,165	44,123	15,042	2.88
Asturias, Principado de	6,867	5,342	1,525	19,552	17,091	2,461	2.85
Balears, Illes	1,260	452	808	6,920	909	6,011	5.49
Canarias	3,619	3,294	325	14,072	10,212	3,860	3.89
Cantabria	15,294	14,278	1,016	46,429	44,503	1,926	3.04
Castilla y León	15,099	9,143	5,956	31,217	21,941	9,276	2.07
Castilla - La Mancha	7,916	6,706	1,210	21,498	18,890	2,608	2.72
Cataluña	182,979	143,202	39,777	740,815	528,949	211,866	4.05
Comunitat Valenciana	61,574	49,122	12,452	418,318	198,112	220,206	6.79
Extremadura	13,857	11,922	1,935	32,546	28,548	3,998	2.35
Galicia	4,349	3,646	703	14,780	13,649	1,131	3.40
Madrid, Comunidad de	14,901	12,156	2,745	40,193	33,677	6,516	2.70
Murcia, Región de	11,017	7,211	3,805	72,640	21,653	50,987	6.59
Navarra, Comunidad Foral de	10,411	8,518	1,893	27,138	23,666	3,473	2.61
País Vasco	6,646	4,347	2,299	17,698	13,194	4,503	2.66
Rioja, La	11,707	11,025	682	35,601	34,523	1,078	3.04
Ceuta	-	-	-	-	-	-	-
Melilla	-	-	-	-	-	-	-

#### 4. Open establishments, capacity, occupancy and number of staff by Autonomous Cities and Communities

Autonomous Communities	Estimated open establishments	Capacity		Occupied pitches	Occupancy rate per pitch	Weekend occupancy rate	Employed personnel
		Estimated bedplaces	Estimated pitches				
TOTAL	844	569,817	177,178	1,538,757	28.95	31.73	5,394
Andalucía	132	77,557	24,615	145,264	19.67	21.83	786
Aragón	74	27,933	8,423	56,926	22.53	25.78	277
Asturias, Principado de	29	15,620	5,054	20,286	13.38	14.98	101
Balears, Illes	3	1,559	642	3,248	16.86	13.39	47
Canarias	6	3,869	1,186	8,596	24.15	26.08	25
Cantabria	34	26,216	8,251	81,346	32.86	34.09	147
Castilla y León	68	28,008	8,100	49,807	20.50	22.33	202
Castilla - La Mancha	21	9,673	2,679	19,002	23.64	28.00	83
Cataluña	222	224,021	69,578	605,612	29.01	32.35	2,065
Comunitat Valenciana	98	67,590	21,236	269,235	42.26	46.01	784
Extremadura	30	11,713	3,591	29,428	27.31	31.25	153
Galicia	43	15,263	4,930	16,361	11.06	13.55	142
Madrid, Comunidad de	20	17,484	5,858	84,109	47.86	49.07	164
Murcia, Región de	19	15,000	4,944	45,099	30.41	35.12	173
Navarra, Comunidad Foral de	21	12,500	3,246	37,750	38.76	36.43	112
País Vasco	16	8,867	2,604	26,149	33.47	32.36	73
Rioja, La	9	6,945	2,240	40,539	60.33	64.17	58
Ceuta	-	-	-	-	-	-	-
Melilla	-	-	-	-	-	-	-

#### 5. Travellers and overnight stays, average stay, capacity, occupancy and number of staff by provinces with the greatest number of overnight stays\*

Provinces	Travellers		Overnight stays		Average stay	Estimated open establishments	Estimated pitches	Occupancy rate per pitch	Employed personnel
	Residents in Spain	Residents abroad	Residents in Spain	Residents abroad					
Girona	41,583	17,258	178,728	89,657	4.56	89	28,751	21.93	849
Tarragona	50,174	13,419	207,579	59,169	4.19	52	23,527	29.31	745
Alicante\Alacant	15,391	4,601	78,986	141,645	11.04	30	8,907	45.61	376
Barcelona	42,783	8,492	111,129	60,760	3.35	46	12,173	43.25	355
Castellón\Castelló	13,232	5,357	53,583	58,222	6.01	35	6,327	37.14	203
Valencia\València	20,499	2,494	65,543	20,339	3.74	32	6,002	42.68	205
Málaga	5,556	6,584	22,543	50,411	6.01	28	4,657	29.25	166
Huelva	4,273	1,088	37,670	3,975	7.77	10	4,860	19.84	115
Cádiz	6,678	4,267	20,653	13,530	3.12	26	6,085	15.00	181
Huesca	10,609	2,128	29,426	4,735	2.68	51	6,196	22.24	200
Lleida	8,662	608	31,514	2,280	3.65	35	5,126	33.53	117
Almería	4,459	1,775	18,335	12,251	4.91	19	2,663	21.22	102
Granada	2,716	6,575	7,364	18,011	2.73	24	2,776	17.80	105
Zaragoza	1,907	2,119	7,081	7,503	3.62	11	1,251	26.95	45
Albacete	3,862	167	12,361	381	3.16	7	1,100	29.89	31

\* Provinces belonging to uniprovincial Autonomous Communities have not been included because they are reflected in previous tables.

### 6. Travellers, overnight stays, average stay, open establishments, capacity, occupancy and number of staff from tourist areas with the greatest number of overnight stays

Tourist areas	Number of travellers		Number of overnight stays		Average stay	Estimated open establishments	Estimated pitches	Occupancy rate per pitch	Employed personnel
	Residents in	Residents abroad	Residents in	Residents abroad					
	Spain		Spain						
Costa Brava	31,743	16,677	155,682	88,439	5.04	68	26,242	20.40	773
Costa Daurada	45,327	11,678	173,609	52,305	3.96	42	21,598	28.97	667
Costa Blanca	12,419	4,035	64,780	129,510	11.81	26	7,016	51.98	328
Costa de Castellón	10,297	5,089	45,417	57,100	6.66	29	5,830	37.03	189
P.N. Aiguamolls de l'Empordà	4,412	8,011	44,251	46,361	7.29	13	5,597	25.46	207
Pirineus	26,064	974	71,306	2,649	2.74	63	8,522	38.86	227
Costa del Sol	3,975	4,621	18,805	45,915	7.53	13	3,304	35.30	113
Costa Cálida	2,719	2,966	7,618	45,738	9.39	10	3,939	27.83	124
Costa Valencia	5,854	1,649	22,788	18,421	5.49	10	2,267	29.78	106
Terres de l'Ebre	4,847	1,741	33,970	6,865	6.20	10	1,929	33.16	78
Costa de la Luz (Huelva)	3,724	994	35,222	3,735	8.26	8	4,742	19.32	108
Pirineo Aragonés	10,223	1,895	28,719	4,787	2.76	46	6,014	22.90	194
P. N. Delta de l'Ebre	3,453	428	28,993	1,988	7.98	5	1,085	41.96	50
Costa de la Luz (Cádiz)	5,868	3,128	19,104	11,043	3.35	21	5,444	14.10	156
Costa de Almería	4,295	1,709	17,749	10,659	4.73	14	2,311	22.00	84

### 7. Travellers, overnight stays, average stay, open establishments, capacity, occupancy and number of staff from tourist sites with the greatest number at overnights stays

Tourist sites	Number of guests		Number of overnight stays		Average stay	Estimated open establishments	Estimated pitches	Occupancy rate per pitch	Employed personnel
	Residents in	Residents abroad	Residents in	Residents abroad					
	Spain		Spain						
Benidorm	2,327	1,390	12,056	96,365	29.17	9	3,775	60.98	109
Vilanova i la Geltrú	5,448	3,657	12,424	41,575	5.93	3	2,684	41.06	80
Castelló d'Empúries	1,941	1,706	24,355	19,449	12.01	3	1,911	24.89	64
Marbella	472	2,769	8,262	28,607	11.38	3	1,310	40.31	45
Mont-Roig del Camp	6,535	1,811	22,572	11,121	4.04	6	4,441	17.84	133
Cartagena	1,010	1,880	3,377	30,133	11.60	3	2,537	21.85	63
Sant Pere Pescador	971	4,678	8,662	21,807	5.39	5	1,798	27.58	101
Oliva	3,262	1,098	14,483	15,906	6.97	6	1,412	33.19	81
Blanes	7,236	956	22,560	5,696	3.45	8	3,215	26.35	124
Castell-Platja d'Aro	3,889	1,810	21,614	5,702	4.79	6	4,465	14.72	89
Peñíscola	2,051	1,970	8,361	14,541	5.70	8	1,256	34.76	38
Benicasim/Benicàssim	1,814	1,269	8,549	14,259	7.40	5	1,051	48.06	43

## 8. Percentage distribution of Spanish travellers by Autonomous City and Community of origin

Destination \ Origin	Total	Andalucía	Aragón	Asturias, P. de	Balears, Illes	Canarias	Cantabria	Castilla y León	Castilla-La Mancha	Cataluña
TOTAL	100.00	6.53	3.13	1.34	0.24	1.10	0.74	2.13	2.32	43.29
Andalucía	100.00	61.45	0.56	0.51	0.14	0.37	0.52	1.29	2.70	3.99
Aragón	100.00	0.34	37.03	0.25	-	0.03	0.72	1.44	1.66	24.28
Asturias, Principado de	100.00	0.30	0.12	50.51	0.55	-	2.34	8.21	0.24	1.11
Balears, Illes	100.00	-	5.16	-	79.80	-	-	-	-	7.57
Canarias	100.00	0.21	-	-	-	99.00	-	0.43	-	0.35
Cantabria	100.00	0.10	0.52	0.63	-	0.42	8.50	7.60	0.38	0.48
Castilla y León	100.00	2.35	3.16	12.97	0.10	0.12	1.41	26.74	1.04	3.86
Castilla - La Mancha	100.00	4.01	1.76	0.27	-	0.17	0.19	2.03	50.62	2.80
Cataluña	100.00	0.09	2.15	0.02	0.06	0.04	0.01	0.09	0.13	94.71
Comunitat Valenciana	100.00	0.70	1.13	0.09	-	0.10	0.28	0.51	2.88	4.21
Extremadura	100.00	11.12	0.54	0.77	0.14	0.05	1.88	12.53	8.73	3.37
Galicia	100.00	0.40	0.31	1.19	0.63	-	0.60	4.97	-	1.32
Madrid, Comunidad de	100.00	5.95	0.17	0.14	1.84	0.78	0.33	0.73	1.59	2.70
Murcia, Región de	100.00	2.84	0.67	-	-	-	1.03	1.68	3.26	2.46
Navarra, C. Foral de	100.00	0.12	1.66	0.39	-	-	0.91	0.36	-	7.22
País Vasco	100.00	0.78	1.14	-	0.19	-	1.05	1.45	1.37	5.93
Rioja, La	100.00	0.09	1.18	0.57	0.05	0.33	0.90	0.72	0.19	2.43
Ceuta	-	-	-	-	-	-	-	-	-	-
Melilla	-	-	-	-	-	-	-	-	-	-

(conclusion)

Destination \ Origin	Comunitat Valenciana	Extremadura	Galicia	Madrid, C. de	Murcia, Región	Navarra, C. Foral de	País Vasco	Rioja, La	Ceuta	Melilla
TOTAL	14.24	1.08	1.35	7.79	1.44	2.03	10.86	0.36	0.03	0.02
Andalucía	6.04	1.78	0.96	9.41	3.24	0.89	5.50	0.30	0.26	0.12
Aragón	11.73	0.32	0.33	7.29	0.56	4.44	8.87	0.70	-	-
Asturias, Principado de	1.18	1.44	9.49	9.52	-	1.10	13.40	0.48	-	-
Balears, Illes	-	-	-	-	-	-	7.48	-	-	-
Canarias	-	-	-	-	-	-	-	-	-	-
Cantabria	0.39	0.60	0.52	4.62	-	2.90	70.85	1.51	-	-
Castilla y León	4.40	1.08	2.03	24.95	0.41	3.98	10.24	1.05	-	0.13
Castilla - La Mancha	14.38	0.38	0.91	13.93	5.17	0.47	2.84	0.09	-	-
Cataluña	0.62	0.01	0.05	0.33	0.04	0.57	1.05	0.03	-	-
Comunitat Valenciana	74.78	-	0.05	9.96	2.56	0.81	1.86	0.08	-	-
Extremadura	3.46	22.32	1.38	17.62	0.36	1.35	14.21	0.17	-	-
Galicia	-	-	81.34	5.90	-	-	3.36	-	-	-
Madrid, Comunidad de	3.34	0.23	0.45	77.16	0.63	0.53	3.03	0.26	-	0.13
Murcia, Región de	51.53	0.16	-	4.86	27.24	1.25	3.01	-	-	-
Navarra, C. Foral de	3.65	0.16	0.23	1.95	0.12	31.96	49.43	1.85	-	-
País Vasco	3.31	0.38	0.62	2.57	-	8.05	72.75	0.43	-	-
Rioja, La	1.08	-	0.24	1.35	-	3.56	84.13	3.18	-	-
Ceuta	-	-	-	-	-	-	-	-	-	-
Melilla	-	-	-	-	-	-	-	-	-	-

## 9. Percentage distribution of overnight stays of Spanish travellers by Autonomous City and Community of origin

Destination \ Origin	Total	Andalucía	Aragón	Asturias, P. de	Balears, Illes	Canarias	Cantabria	Castilla y León	Castilla-La Mancha	Cataluña
TOTAL	100.00	8.23	2.98	1.11	0.16	0.96	0.64	1.87	2.22	45.50
Andalucía	100.00	71.52	0.35	0.67	0.04	0.25	0.33	1.21	1.82	3.53
Aragón	100.00	0.67	37.74	0.20	0.24	0.07	0.64	1.42	2.08	22.71
Asturias, Principado de	100.00	0.32	0.24	44.38	1.32	-	4.04	9.78	0.62	1.63
Balears, Illes	100.00	-	1.65	-	77.58	-	-	-	-	3.90
Canarias	100.00	0.76	-	-	-	98.85	-	0.22	-	0.17
Cantabria	100.00	0.16	0.71	0.80	-	0.28	7.86	9.98	0.67	0.53
Castilla y León	100.00	1.56	3.41	14.87	0.18	0.05	1.42	27.84	0.93	2.66
Castilla - La Mancha	100.00	4.10	1.90	0.13	-	0.08	0.06	2.07	52.49	2.32
Cataluña	100.00	0.05	2.32	0.01	0.04	0.02	-	0.09	0.12	94.95
Comunitat Valenciana	100.00	0.65	1.63	0.10	0.07	0.07	0.26	0.59	4.15	5.93
Extremadura	100.00	10.11	0.61	0.63	0.14	0.02	2.63	14.13	8.46	3.26
Galicia	100.00	0.15	0.08	0.61	0.13	-	0.39	3.09	-	0.48
Madrid, Comunidad de	100.00	6.26	0.12	0.18	0.81	1.03	0.33	0.79	1.60	2.65
Murcia, Región de	100.00	2.90	0.25	0.19	-	0.20	0.43	2.24	2.44	1.71
Navarra, C. Foral de	100.00	0.10	1.74	0.39	-	-	0.82	0.40	-	6.77
País Vasco	100.00	0.68	0.46	-	0.48	-	2.43	1.13	0.58	5.01
Rioja, La	100.00	0.10	0.74	0.65	0.03	0.11	0.69	0.54	0.14	2.34
Ceuta	-	-	-	-	-	-	-	-	-	-
Melilla	-	-	-	-	-	-	-	-	-	-

(conclusion)

Destination \ Origin	Comunitat Valenciana	Extrema-dura	Galicia	Madrid, C. de	Murcia, Región	Navarra, C. Foral de	Pais Vasco	Rioja, La	Ceuta	Melilla
TOTAL	14.64	0.88	1.42	6.57	1.41	1.57	9.52	0.30	0.02	0.01
Andalucía	4.08	1.44	0.68	7.05	2.38	0.69	3.59	0.15	0.18	0.05
Aragón	13.08	0.25	0.29	8.64	0.53	3.40	7.39	0.63	-	-
Asturias, Principado de	1.30	1.31	8.23	9.49	0.22	1.30	15.47	0.34	-	-
Balears, Illes	-	-	-	-	-	-	16.87	-	-	-
Canarias	-	-	-	-	-	-	-	-	-	-
Cantabria	0.20	0.89	0.27	4.93	-	3.09	67.45	2.17	-	-
Castilla y León	4.79	0.80	1.59	22.69	0.43	3.84	11.85	1.03	-	0.06
Castilla - La Mancha	14.69	0.23	0.68	14.16	4.96	0.26	1.78	0.09	-	-
Cataluña	0.50	0.02	0.06	0.30	0.05	0.41	0.98	0.08	-	-
Comunitat Valenciana	70.75	-	0.12	9.33	2.73	0.99	2.50	0.12	-	0.01
Extremadura	2.80	25.34	1.91	17.62	0.16	1.04	10.90	0.24	-	-
Galicia	-	-	89.42	4.05	-	-	1.59	-	-	-
Madrid, Comunidad de	4.09	0.43	0.61	76.45	0.73	1.01	2.50	0.25	-	0.17
Murcia, Región de	50.64	0.09	0.23	4.41	29.24	0.98	4.06	-	-	-
Navarra, C. Foral de	2.60	0.16	0.20	1.96	0.20	28.59	54.81	1.26	-	-
País Vasco	2.95	0.41	0.40	2.46	-	6.86	75.60	0.56	-	-
Rioja, La	1.00	-	0.12	0.87	-	2.67	88.18	1.82	-	-
Ceuta	-	-	-	-	-	-	-	-	-	-
Melilla	-	-	-	-	-	-	-	-	-	-

## 10. Travellers and overnight stays by countries of residence

Countries	Travellers		Overnight stays	
	Total	%	Total	%
TOTAL	444,240	100.00	1,829,693	100.00
Residents in Spain	336,117	75.66	1,176,458	64.30
Residents abroad	108,122	24.34	653,235	35.70
TOTAL residents abroad	108,122	100.00	653,235	100.00
TOTAL residents in E.U. (excluding Spain)	100,437	92.89	625,912	95.82
- Germany	20,035	18.53	132,282	20.25
- Austria	1,037	0.96	3,611	0.55
- Belgium	3,587	3.32	28,407	4.35
- Denmark	1,140	1.05	8,000	1.22
- Finland	740	0.68	3,932	0.60
- France	31,981	29.58	119,002	18.22
- Greece	76	0.07	108	0.02
- Ireland	615	0.57	4,332	0.66
- Italy	2,043	1.89	5,670	0.87
- Luxembourg	404	0.37	1,034	0.16
- Netherlands	18,348	16.97	116,470	17.83
- Poland	668	0.62	2,014	0.31
- Portugal	1,341	1.24	3,113	0.48
- United Kingdom	15,859	14.67	187,329	28.68
- Czech Republic	461	0.43	1,217	0.19
- Sweden	829	0.77	6,440	0.99
- Other EU countries	1,272	1.18	2,952	0.45
Other European countries	4,209	3.89	16,162	2.47
United States of America	255	0.24	906	0.14
Rest of America	550	0.51	1,312	0.20
African countries	64	0.06	259	0.04
Other countries	2,607	2.41	8,685	1.33

## Tourist accommodation occupancy survey: (Rural tourist accommodation)

**Abril 2012**

Provisional data

### 1. Number of travellers, overnight stays and average stay by Autonomous Cities and Communities

Autonomous Communities	Number of travellers			Number of overnight stays			Average stay
	Total	Residents In Spain	Residents abroad	Total	Residents In Spain	Residents abroad	
<b>TOTAL</b>	<b>276,750</b>	<b>244,742</b>	<b>32,008</b>	<b>778,920</b>	<b>656,659</b>	<b>122,261</b>	<b>2.81</b>
Andalucía	14,228	10,294	3,934	50,565	29,645	20,920	3.55
Aragón	13,621	12,881	741	41,160	39,088	2,072	3.02
Asturias, Principado de	18,989	18,622	366	51,249	50,702	548	2.70
Balears, Illes	12,968	1,943	11,025	53,977	4,946	49,031	4.16
Canarias	4,633	1,589	3,045	29,575	7,944	21,630	6.38
Cantabria	15,286	14,352	934	40,206	38,232	1,974	2.63
Castilla y León	65,438	61,087	4,351	175,673	166,672	9,001	2.68
Castilla-La Mancha	19,811	19,513	298	53,535	52,240	1,295	2.70
Cataluña	26,744	24,963	1,780	72,887	68,682	4,205	2.73
Comunitat Valenciana	12,841	12,556	285	31,692	30,562	1,130	2.47
Extremadura	16,375	15,134	1,241	44,657	41,108	3,549	2.73
Galicia	11,512	9,995	1,517	23,081	20,472	2,608	2.00
Madrid, C. de	13,265	12,942	322	25,590	24,941	650	1.93
Murcia, Región de	3,864	3,697	167	8,949	8,701	249	2.32
Navarra, C. Foral de	13,597	12,592	1,006	37,477	36,471	1,006	2.76
País Vasco	10,785	9,956	829	29,906	28,110	1,796	2.77
Rioja, La	2,791	2,623	167	8,742	8,143	599	3.13
Ceuta	-	-	-	-	-	-	-
Melilla	-	-	-	-	-	-	-
Interannual rate	-0.31	-1.77	12.46	5.49	6.96	-1.76	5.82
Cumulative interannual rate	0.91	0.37	6.12	2.39	2.38	2.42	1.47

### 2. Open rural tourist accommodation and estimated vacancies, levels of occupancy and personnel employed by Autonomous Cities and Communities

Autonomous Communities	Nº of rural open estimated accom.	Nº of vacancies	Level of occupancy			Employed personnel
			By vacancies	By vacancies at week end	By rooms	
<b>TOTAL</b>	<b>15,564</b>	<b>144,786</b>	<b>17.79</b>	<b>29.67</b>	<b>19.90</b>	<b>22,051</b>
Andalucía	1,407	11,674	14.37	21.88	19.39	1,978
Aragón	1,119	8,699	15.55	26.79	16.29	1,232
Asturias, Principado de	1,399	12,590	13.52	23.80	15.54	1,671
Balears, Illes	248	4,549	39.24	44.16	42.58	1,042
Canarias	655	4,010	24.50	25.56	33.69	895
Cantabria	418	7,474	17.78	28.46	20.00	587
Castilla y León	3,334	29,850	19.44	33.29	20.89	4,691
Castilla-La Mancha	1,501	12,517	14.14	27.29	14.99	2,277
Cataluña	1,727	13,852	17.42	35.03	19.12	2,149
Comunitat Valenciana	965	9,126	11.54	18.66	13.32	1,434
Extremadura	504	6,154	24.04	34.82	27.58	727
Galicia	552	6,919	11.07	19.40	11.29	858
Madrid, C. de	237	4,186	20.23	37.02	23.09	608
Murcia, Región de	255	2,708	11.00	19.84	15.27	355
Navarra, C. Foral de	731	5,215	23.60	42.16	24.49	939
País Vasco	402	4,206	23.45	41.45	24.72	480
Rioja, La	112	1,056	26.87	46.70	26.37	127
Ceuta	-	-	-	-	-	-
Melilla	-	-	-	-	-	-
Interannual rate	2.68	3.24	2.09	5.09	2.24	-1.56
Cumulative interannual rate	3.07	3.38	-1.68	-2.85	-1.21	-0.84



### 3. Number of travellers, overnight stays and average stay of provinces with the greatest number of overnight stays<sup>1</sup>

Provinces	Number of travellers			Number of overnight stays			Average stay
	Total	Residents In Spain	Residents abroad	Total	Residents In Spain	Residents abroad	
Cáceres	14,286	13,244	1,041	40,163	36,985	3,178	2.81
Ávila	11,235	10,426	808	29,418	27,032	2,386	2.62
Girona	10,752	9,871	880	26,967	25,355	1,612	2.51
Segovia	9,929	9,769	160	25,249	24,996	253	2.54
Soria	8,982	8,799	184	24,018	23,556	461	2.67
Salamanca	6,915	6,668	247	21,664	21,400	264	3.13
St Cruz de Tenerife	3,272	1,077	2,195	21,237	6,398	14,839	6.49
Huesca	6,270	5,789	480	21,013	19,718	1,296	3.35
Burgos	7,481	6,810	671	20,802	18,756	2,046	2.78
Barcelona	7,226	6,895	331	20,295	18,932	1,363	2.81
León	7,748	6,326	1,423	19,779	18,042	1,737	2.55
Málaga	2,863	1,547	1,316	19,382	6,588	12,793	6.77
Cuenca	5,572	5,572	-	17,401	16,747	654	3.12
Lleida	5,121	4,692	428	15,780	14,934	846	3.08
Zamora	5,535	5,115	420	15,550	14,552	999	2.81

### 4. Open rural tourist accommodation and estimated vacancies degrees of occupancy and personnel employed in provinces with the highest number of overnight stays<sup>1</sup>

Provinces	Nº of rural open estimated accommodation	Nº of vacancies	Level of occupancy			Employed personnel
			By vacancies	By vacancies at the weekend	By rooms	
Cáceres	442	5,464	24.34	34.97	28.01	642
Ávila	765	5,766	16.92	31.20	18.25	1,186
Girona	565	4,658	19.15	39.98	21.71	779
Segovia	394	3,642	22.61	39.51	22.94	563
Soria	313	3,013	26.30	47.94	27.21	379
Salamanca	479	3,782	18.86	31.24	20.00	629
St Cruz de Tenerife	530	2,989	23.61	24.91	32.60	698
Huesca	582	4,361	15.75	26.72	15.60	634
Burgos	349	3,616	19.02	35.52	20.17	421
Barcelona	449	3,948	17.07	35.35	18.53	588
León	433	3,997	16.37	25.34	18.56	658
Málaga	539	3,574	18.05	23.14	29.87	695
Cuenca	307	3,081	18.59	32.84	18.78	428
Lleida	512	3,517	14.80	28.02	15.95	558
Zamora	203	2,254	22.94	31.78	26.42	311

<sup>1</sup> Provinces belonging to uniprovincial Autonomous Communities have not been included because they are reflected in previous tables.

## 5. Number of travellers, overnight stays, average stay, estimated vacancies, levels of occupancy and personnel employed in areas with the highest number of overnight stays

Areas	Number of travellers		Number of overnight stays		Average stay	Capacity		Level of occupancy		
	Residents In Spain	Residents abroad	Residents In Spain	Residents abroad		Nº of rural open esti-mated accom.	Nº of vacancies	By vacancies	By vacancies at week end	By rooms
Isla de Mallorca	1,652	10,428	4,119	46,713	4.21	222	4,003	41.99	46.93	45.41
Pirineo Navarro	11,982	77	35,830	77	2.98	643	4,498	26.15	46.16	26.76
Pirineus	8,473	728	24,010	1,016	2.72	681	4,958	16.67	33.93	18.12
Pirineo Aragonés	5,755	503	19,547	1,323	3.33	532	4,018	16.97	27.86	16.97
Costa Brava	6,267	470	17,219	1,034	2.71	362	3,117	19.41	40.15	21.93
Costa Verde	5,387	169	16,688	169	3.03	443	4,412	12.68	22.90	14.35
Catalunya Central	4,135	236	11,416	1,079	2.86	287	2,449	16.91	35.61	18.00
P.Nacional Picos de Europa	3,186	56	10,255	843	3.42	275	2,672	13.85	22.07	18.01
Isla de Tenerife	664	1,492	2,360	8,403	4.99	113	1,126	31.79	34.83	37.63
Pirineo Vasco	2,787	168	8,818	462	3.14	137	1,403	21.77	34.23	23.47
P.Nacional Teide	464	1,191	1,082	6,966	4.86	71	786	34.02	36.21	38.57
Isla de La Palma	187	399	2,955	4,884	13.39	281	1,216	21.41	21.22	34.43
Costa de Gipuzkoa	2,276	370	6,311	449	2.56	61	681	32.88	59.98	35.54
Costa Daurada	2,263	140	5,926	385	2.63	124	1,099	19.02	36.91	19.72
P.Natural Calares y Cabeceras de los Rios Mundo, Tus y Gualimar	1,844	-	5,552	-	3.01	225	1,236	14.86	30.27	16.30

## 6. Number of travellers, overnight stays, average stay, estimated vacancies, levels of occupancy and personnel employed class per rural house per Autonomous Cities and Communities<sup>2</sup>

Autonomous Communities	Number of travellers		Number of overnight stays		Average stay	Capacity		Level of occupancy		Employed personnel
	Residents In Spain	Residents abroad	Residents In Spain	Residents abroad		Nº of rural open esti-mated accom.	Nº of vacancies	By vacancies	By vacancies at week end	
TOTAL	153,674	15,044	447,523	60,481	3.01	12,670	96,966	17.31	29.64	16,376
Andalucía	9,771	3,728	28,724	20,127	3.62	1,384	11,277	14.37	21.80	1,917
Aragón	9,770	607	27,188	1,082	2.72	811	6,251	14.83	27.32	893
Asturias, Principado de	9,279	85	26,229	170	2.82	954	5,944	14.76	27.44	1,025
Balears, Illes	622	2,899	1,209	10,220	3.25	62	867	43.78	45.40	156
Canarias	743	1,650	6,064	13,749	8.28	624	3,182	20.69	20.37	743
Cantabria	3,995	70	13,900	467	3.53	138	2,100	22.68	36.38	171
Castilla y León	35,842	859	114,108	3,072	3.19	2,778	18,641	20.70	35.17	3,433
Castilla-La Mancha	18,018	298	48,885	1,295	2.74	1,461	11,720	14.16	27.49	2,210
Cataluña	19,301	1,394	53,717	2,999	2.74	1,448	10,865	17.28	34.23	1,756
Comunitat Valenciana	7,611	234	23,088	1,053	3.08	926	7,032	11.40	19.45	1,309
Extremadura	7,194	656	20,853	2,125	2.93	314	2,843	26.65	36.93	412
Galicia	6,259	1,045	13,131	1,625	2.02	390	4,589	10.67	19.18	549
Madrid, C. de	1,500	-	2,880	-	1.92	58	536	17.72	43.81	124
Murcia, Región de	3,243	-	8,084	-	2.49	249	2,537	10.61	19.21	328
Navarra, C. Foral de	12,592	1,006	36,471	1,006	2.76	731	5,215	23.60	42.16	939
País Vasco	5,310	347	14,851	893	2.78	231	2,310	22.47	40.29	282
Rioja, La	2,623	167	8,143	599	3.13	112	1,056	26.87	46.70	127
Ceuta	-	-	-	-	-	-	-	-	-	-
Melilla	-	-	-	-	-	-	-	-	-	-

<sup>2</sup> To facilitate the comparability between data from different Autonomous Communities (and because of the different regulation and different characteristics), a group called rural house has been created, with those accommodations with similar typology (location, capacity, etc...).

The variables included in the previous table have been estimated with that type of establishments.

The variables shown in the table have been estimated with the type of accommodation under rural tourist accommodation.

## 7. Percentage distribution of Spanish travellers by Autonomous Cities and Community of origin

Origin Destination	Total	Andalucía	Aragón	Asturias, P. de	Balears, Illes	Canarias	Cantabria	Castilla y León	Castilla-La Mancha	Cataluña
TOTAL	100.00	4.62	2.96	2.32	0.93	0.67	0.94	9.11	2.86	15.27
Andalucía	100.00	68.25	0.11	-	0.35	0.12	-	1.07	0.60	3.23
Aragón	100.00	0.70	19.86	-	0.07	0.15	0.72	0.71	2.15	26.09
Asturias, P. de	100.00	1.37	-	19.25	0.73	1.23	0.53	19.04	0.77	4.00
Balears, Illes	100.00	0.75	-	-	59.54	-	1.58	-	-	20.10
Canarias	100.00	5.66	-	-	0.54	73.52	0.54	-	0.54	3.87
Cantabria	100.00	0.95	2.43	3.37	0.25	0.12	6.12	13.04	1.40	5.34
Castilla y León	100.00	1.81	1.65	1.55	0.24	0.15	1.25	20.21	2.72	2.81
Castilla-La Mancha	100.00	4.30	0.75	-	-	0.07	-	1.74	14.13	0.90
Cataluña	100.00	-	1.93	0.10	0.96	-	-	-	0.50	93.57
Comunitat Valenciana	100.00	0.03	-	-	-	-	-	1.60	0.40	5.45
Extremadura	100.00	9.43	0.99	2.18	1.67	0.17	1.27	7.85	5.50	7.60
Galicia	100.00	0.46	0.41	2.21	0.86	0.44	1.43	5.37	1.22	3.62
Madrid, C. de	100.00	1.38	0.89	0.13	0.13	0.06	-	1.74	3.90	1.99
Murcia, Región de	100.00	0.23	0.12	-	3.87	-	-	0.12	5.14	1.51
Navarra, C. Foral de	100.00	-	10.06	-	-	-	-	7.99	-	13.61
País Vasco	100.00	0.73	7.53	0.59	-	0.17	0.62	7.17	0.39	20.01
Rioja, La	100.00	0.67	14.09	-	-	-	1.01	4.03	1.34	9.40
Ceuta	-	-	-	-	-	-	-	-	-	-
Melilla	-	-	-	-	-	-	-	-	-	-

Origin Destination	Comunitat Valencian	Extrema- dura	Galicia	Madrid (C. de)	Murcia (Región)	Navarra (C. Foral)	País Vasco	Rioja (La)	Ceuta	Melilla	(conclusion)
TOTAL	9.47	2.27	4.64	29.86	1.04	3.10	8.76	1.16	-	0.02	
Andalucía	3.90	2.13	0.89	14.66	3.49	0.14	1.03	-	-	-	
Aragón	14.90	-	1.03	19.46	0.82	1.17	6.77	5.41	-	-	
Asturias, P. de	1.15	0.09	8.83	28.29	-	1.50	13.22	-	-	-	
Balears, Illes	1.32	0.54	0.75	15.42	-	-	-	-	-	-	
Canarias	0.54	0.27	5.14	8.02	-	-	0.54	-	-	0.81	
Cantabria	2.03	0.75	5.75	27.58	0.38	6.12	21.65	2.72	-	-	
Castilla y León	3.26	0.60	3.77	48.09	0.24	2.50	7.81	1.33	-	-	
Castilla-La Mancha	20.69	2.34	0.35	48.84	1.83	2.06	2.00	-	-	-	
Cataluña	0.47	-	-	1.06	-	-	1.32	0.07	-	-	
Comunitat Valenciana	85.17	-	1.60	4.00	0.07	0.92	0.76	-	-	-	
Extremadura	2.16	24.45	1.68	30.07	0.32	0.57	3.90	0.17	-	-	
Galicia	3.36	5.24	53.49	17.32	0.14	0.58	3.53	-	-	0.32	
Madrid, C. de	3.01	0.51	2.06	76.55	0.26	0.26	5.26	1.87	-	-	
Murcia, Región de	29.34	-	-	21.55	36.60	1.29	0.23	-	-	-	
Navarra, C. Foral de	5.92	-	-	4.14	-	25.74	28.99	3.55	-	-	
País Vasco	3.53	0.83	0.97	15.05	0.69	5.70	35.25	0.78	-	-	
Rioja, La	9.40	-	0.67	27.85	-	7.38	19.46	4.70	-	-	
Ceuta	-	-	-	-	-	-	-	-	-	-	
Melilla	-	-	-	-	-	-	-	-	-	-	

## 8. Percentage distribution of overnight stays by Spaniards by Autonomous Community of origin

Origin	Total	Andalucía	Aragón	Asturias (P. de)	Balears (Illes)	Canarias	Cantabria	Castilla y León	Castilla-La Mancha	Cataluña
TOTAL	100.00	4.98	2.89	1.87	1.01	0.95	0.88	8.98	3.04	16.67
Andalucía	100.00	72.19	0.19	-	0.12	0.10	-	0.58	0.57	4.01
Aragón	100.00	0.82	14.75	-	0.04	0.29	0.44	1.19	2.37	29.63
Asturias, P. de	100.00	1.34	-	13.20	0.77	0.51	0.23	15.73	0.70	4.67
Balears, Illes	100.00	1.32	-	-	63.97	-	0.62	-	-	18.56
Canarias	100.00	2.43	-	-	0.11	65.81	0.54	1.14	0.54	2.56
Cantabria	100.00	1.23	2.88	2.22	0.09	0.05	3.92	12.59	1.27	7.08
Castilla y León	100.00	1.86	1.54	1.90	0.15	0.06	1.83	19.93	2.69	3.37
Castilla-La Mancha	100.00	4.09	0.32	-	-	0.07	-	1.54	18.07	0.97
Cataluña	100.00	-	2.75	0.08	1.40	-	-	0.10	0.24	93.24
Comunitat Valenciana	100.00	0.01	-	-	-	-	-	2.63	0.49	9.62
Extremadura	100.00	8.80	0.88	1.88	2.31	0.46	0.82	8.17	5.17	11.01
Galicia	100.00	0.23	0.44	2.03	0.51	0.61	1.01	7.59	1.19	4.01
Madrid, C. de	100.00	1.12	0.73	0.20	0.07	0.03	0.27	2.39	2.75	1.58
Murcia, Región de	100.00	0.10	0.15	-	8.22	-	-	0.05	3.93	1.23
Navarra, C. Foral de	100.00	-	10.42	-	-	-	-	7.56	0.41	12.77
País Vasco	100.00	1.25	7.15	1.11	-	0.37	0.65	6.96	0.34	21.51
Rioja, La	100.00	0.65	11.89	-	-	-	1.19	3.78	1.30	10.16
Ceuta	-	-	-	-	-	-	-	-	-	-
Melilla	-	-	-	-	-	-	-	-	-	-

Origin	Comunitat Valenciana	Extremadura	Galicia	Madrid (C. de)	Murcia (Región)	Navarra (C. Foral)	País Vasco	Rioja (La)	Ceuta	Melilla
TOTAL	8.47	2.14	4.02	29.38	0.88	3.75	8.86	1.21	-	0.03
Andalucía	3.55	1.76	0.74	11.94	2.61	0.05	1.59	-	-	-
Aragón	12.36	-	0.68	21.87	0.27	1.46	7.34	6.47	-	-
Asturias, P. de	1.30	0.56	7.17	38.72	-	2.32	12.77	-	-	-
Balears, Illes	1.39	0.64	0.29	12.04	-	-	-	-	-	1.17
Canarias	0.32	0.11	4.97	19.53	-	-	0.97	-	-	0.97
Cantabria	1.98	0.65	6.43	31.28	0.24	5.01	22.08	1.02	-	-
Castilla y León	3.62	0.62	4.01	45.43	0.18	2.90	8.09	1.82	-	-
Castilla-La Mancha	20.70	2.16	0.13	45.24	1.78	2.87	2.07	-	-	-
Cataluña	0.36	-	-	0.75	-	-	1.03	0.05	-	-
Comunitat Valenciana	76.53	-	2.73	3.40	1.15	2.64	0.80	-	-	-
Extremadura	2.00	22.64	2.22	28.79	0.16	0.66	3.51	0.52	-	-
Galicia	4.74	5.33	47.69	20.58	0.07	0.45	3.36	-	-	0.15
Madrid, C. de	2.61	0.66	3.04	74.94	0.33	0.27	7.12	1.89	-	-
Murcia, Región de	27.71	-	-	24.10	33.31	1.10	0.10	-	-	-
Navarra, C. Foral de	3.68	-	-	5.52	-	30.03	27.58	2.04	-	-
País Vasco	3.04	0.88	1.01	17.86	0.53	6.55	30.01	0.79	-	-
Rioja, La	8.43	-	0.86	28.22	-	6.27	23.57	3.68	-	-
Ceuta	-	-	-	-	-	-	-	-	-	-
Melilla	-	-	-	-	-	-	-	-	-	-

(conclusion)

## 9. Travellers and overnight stays by country of residence

Results by countries	Travellers		Overnight stays	
	Total	%	Total	%
TOTAL	276,750	100.00	778,920	100.00
Residents Spain	244,742	88.43	656,659	84.30
Residents abroad	32,008	11.57	122,261	15.70
Total Residents abroad	32,008	100.00	122,261	100.00
Total Residents in UE (excluding Spain)	26,536	82.90	106,132	86.81
- Germany	10,671	33.34	53,144	43.47
- Belgium	1,140	3.56	4,859	3.97
- France	5,137	16.05	12,260	10.03
- Italy	949	2.97	2,277	1.86
- Netherlands	1,719	5.37	9,837	8.05
- Portugal	475	1.48	1,179	0.96
- United Kingdom	4,816	15.05	16,817	13.75
Sweden	926	2.89	4,094	3.35
Other European countries	2,185	6.83	7,086	5.80
United States of America	1,694	5.29	4,259	3.48
Other countries	2,296	7.17	6,451	5.28

## HOLIDAY DWELLING PRICE INDEX (HDPI)

**April 2012**

Provisional data

### National general index and breakdown by rates

	Index	Interannual variation rate
TOTAL	109.16	1.28
Normal	113.72	0.70
Weekend	111.85	2.60
Tour-operators and travel agencies	106.89	1.48

### National general index and breakdown by modalities

	Index	Interannual variation rate
TOTAL	109.16	1.28
Studio	112.68	-1.34
Dwellings 2/4 bedplaces	105.94	1.25
Dwellings 4/6 bedplaces	120.91	3.85

## Tourist Campsite Price Index (TCSPI)

**April 2012**

Provisional data

### National general index and breakdown by rates

	Index	Interannual variation rate
TOTAL	136.34	-0.95
Normal rate	138.22	-0.24
Special rate for stays up to one month	130.93	-4.38
Special rate for stays longer than one month	136.54	-1.70

### National general index and breakdown by categories

	Index	Interannual variation rate
TOTAL	136.34	-0.95
Luxury and first	126.28	-1.88
Second	142.37	-0.19
Third	144.60	-1.41

## Rural Tourism Accommodation Price Index (RTAPI)

**April 2012**

Provisional data

### General Autonomous Cities and Communities and national indices

	Index	Variation Rate interannual
<b>TOTAL</b>	<b>127.13</b>	<b>-0.49</b>
Andalucía	128.79	-2.14
Aragón	144.37	3.18
Asturias, Principado de	132.04	-1.79
Balears, Illes	107.16	2.80
Canarias	122.78	1.01
Cantabria	144.84	3.46
Castilla y León	131.11	-0.02
Castilla - La Mancha	126.25	-1.29
Cataluña	133.33	-3.22
Comunitat Valenciana	127.85	-1.49
Extremadura	109.87	0.26
Galicia	126.98	2.01
Madrid, Comunidad de	126.93	-2.38
Murcia, Región de	145.07	-0.38
Navarra, Comunidad Foral de	172.73	-2.54
País Vasco	134.76	-7.50
Rioja, La	132.56	-2.86
Ceuta	-	-
Melilla	-	-

### National general index and breakdown by rates

	Index	Variation Rate interannual
<b>TOTAL</b>	<b>127.13</b>	<b>-0.49</b>
Normal	124.13	0.49
Weekend	132.15	-1.05

### National general index and breakdown by rent modality

	Index	Variation Rate interannual
<b>TOTAL</b>	<b>127.13</b>	<b>-0.49</b>
Shared use (in case of per room rent modality)	117.41	0.97
Full use (rent of entire dwelling)	133.86	-1.27