

31 May 2013

**Non-Hotel Tourist Accommodation Occupancy Survey**  
April 2013. *Provisional data*

**Overnight stays in non-hotel tourist accommodation decrease 18.3% in April<sup>(1)</sup>, as compared with the same month of 2012**

Overnight stays in non-hotel tourist accommodation (holiday dwellings, campsites and rural tourism accommodation) exceeded 5.1 million in April, 18.3% more than in the same month of 2012. Overnight stays by resident travellers decreased 46.2%, whereas those of non-residents increased 3.9%. The average stay increased 6.7%, standing at 5.1 overnights per traveller.

During the first quarter of 2013, the overnight stays decreased 0.9% as compared with the same month of the previous year.

Due to the fact that Easter took place this year in March and in 2012 it took place in April, it would be advisable to analyse the **aggregate period of March-April**. During this period it can be observed a 0.7% decrease in overnight stays, as compared to the same two months of 2012. Those of residents decreased by 9.6%, whereas those of non-residents increased 4.1%.

Travellers and overnight stays in collective non-hotel tourist accommodation during the month of April were:

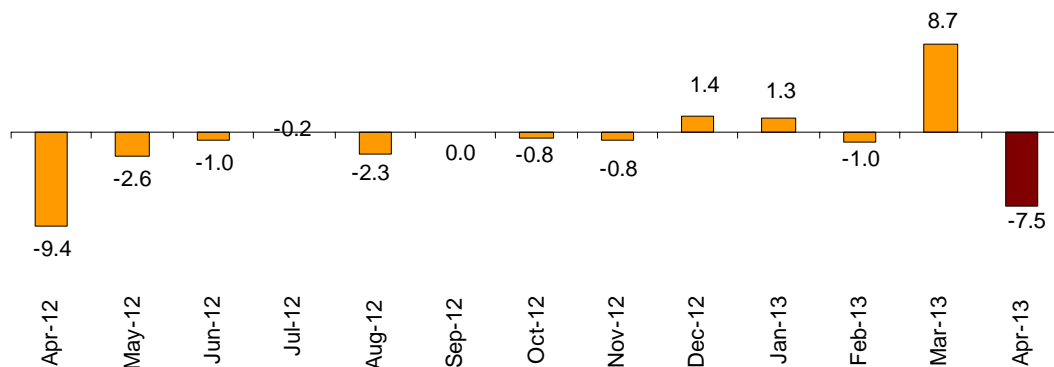
April 2013	Travellers	Overnight stays
Residents in Spain	492,965	1,514,198
EU (not including Spain)	461,951	3,260,291
Rest of the world	62,764	416,396
<b>TOTAL</b>	<b>1,017,680</b>	<b>5,190,885</b>

**Holiday Dwellings**

Overnight stays in holiday dwellings decreased 7.5% in April. Overnight stays of residents decreased 36.0%, whilst of non-residents increased 3.0%. During the period March-April overnight stays increased by 0.8%.

The average stay increased 4.3%, as compared with April 2012, standing at 6.4 overnight stays per traveller.

**Overnight stays annual growth rate in holiday dwellings in %**

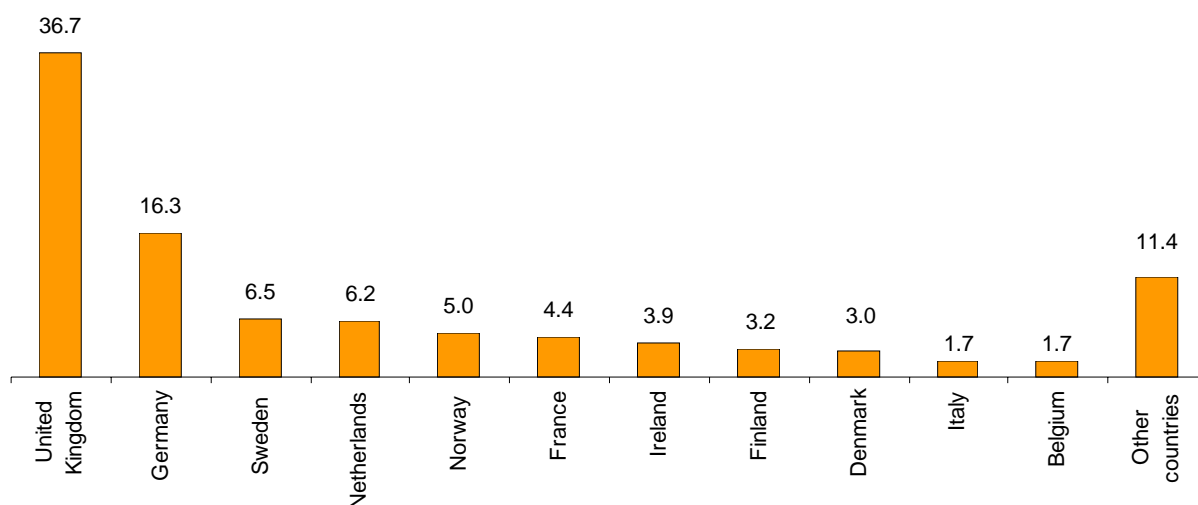


<sup>(1)</sup> Given that in 2013 Easter Week was celebrated in March, and that in 2012 it was celebrated in April, it is advisable to wait for the results of the next month's survey in order to analyse both months together.

In April, 27.5% of the total available bedplaces for holiday dwellings were occupied, 8.1% less than in the same month in 2012. The weekend occupancy rate by bedplaces stood at 29.8%, with an annual decrease of 9.6%.

Non-resident overnight stays in holiday dwellings represented 81.4% of the total. The United Kingdom was the main country of origin, with over one million overnight stays, 4.0% more than in April 2012. The following country of origin was Germany, with 462,751 overnight stays, 0.6% more.

**Distribution of overnight stays of residents abroad of the 11 main countries by origin**



Canarias was the preferred holiday dwelling destination, with 0.1% less overnight stays and Andalucía, with 3.7% less. Comunidad de Madrid presented the highest occupancy rate with 60.5% of the dwellings offered.

By tourist area, the island of Tenerife was the preferred destination, with more than 710,610 overnight stays and an occupancy rate of 64.8%.

The tourist sites with the greatest number of overnight stays were San Bartolomé de Tirajana, Arona and Tías.

## Campsites

The overnight stays in tourist campsites registered an annual decrease of 26.7%. Overnight stays by resident travellers decreased by 47.1%, whereas those of non-resident travellers increased by 8.8%. During the period **March-April** overnight stays increased by 1.5%.

27.2% of the offered pitches were occupied, 5.9% less. The weekend occupancy rate by pitch reached 28.9%, with an annual decrease of 8.2%.

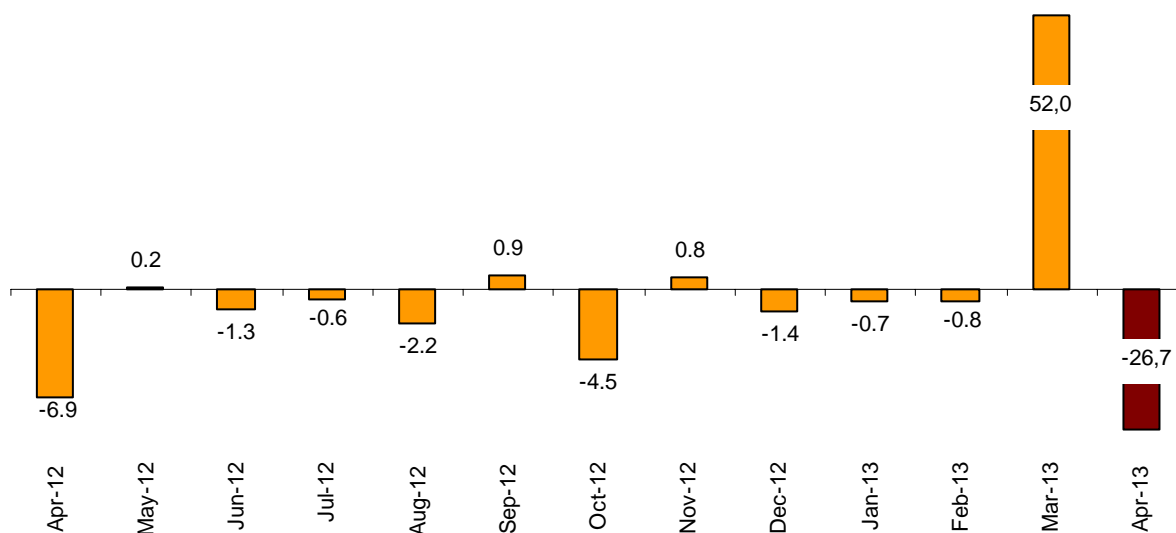
54.1% of the overnight stays on tourist campsites were by non-residents. The United Kingdom was the main country of origin, with 29.1% of the overnight stays by non-residents, 8.0% more than in April 2012.

Cataluña was the preferred destination for camping, with 524,230 overnight stays, 27.7% less. La Rioja reached the highest occupancy rate on campsites, with 58.1% of the pitches offered.

By tourist area, Costa Blanca was the preferred destination for camping, with 184,521 overnight stays and an occupancy rate of 52.8% of the pitches offered.

The tourist sites with the highest number of overnight stays were Benidorm, Castell-Platja d'Àro and Salou.

**Overnight stays annual growth rate in campsites in %**

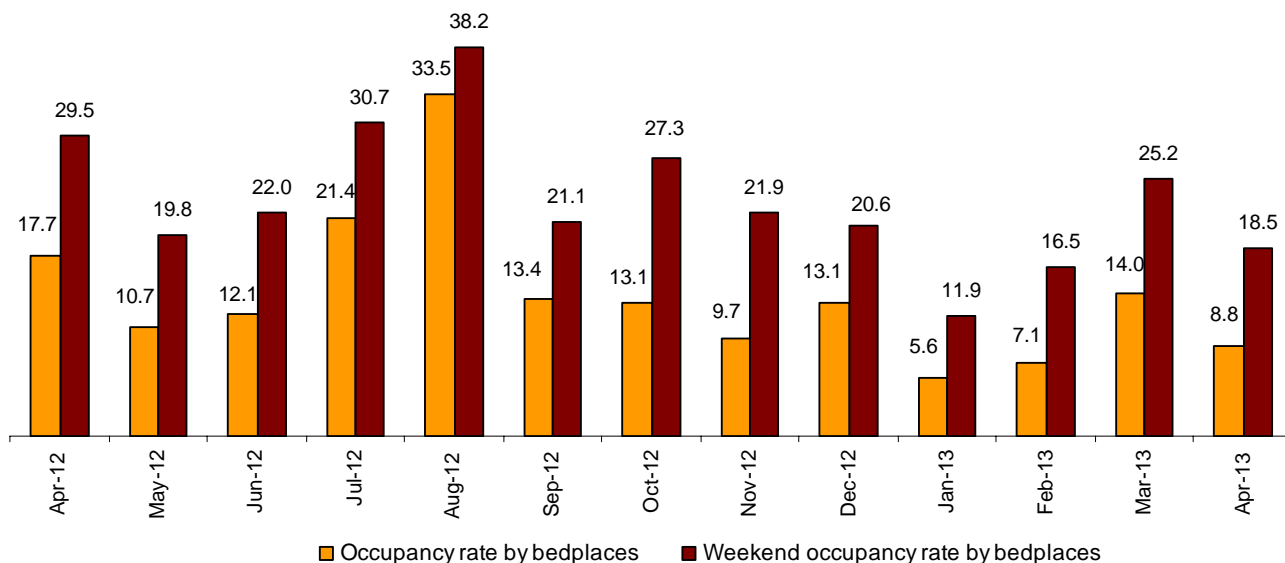


### Rural Tourism Accommodation

Overnight stays in rural tourism accommodation presented an annual decrease of 51.1%, in April<sup>(2)</sup>. Residents' overnight stays decreased 60.4%, whilst those of non-residents did so by 1.7%. During the period **March-April** overnight stays decreased by 16.6%.

8.8% of the bedplaces in rural tourism accommodation were occupied, representing a 50.5% annual decrease. The weekend occupancy rate stood at 18.5%, with a decrease of 37.7%.

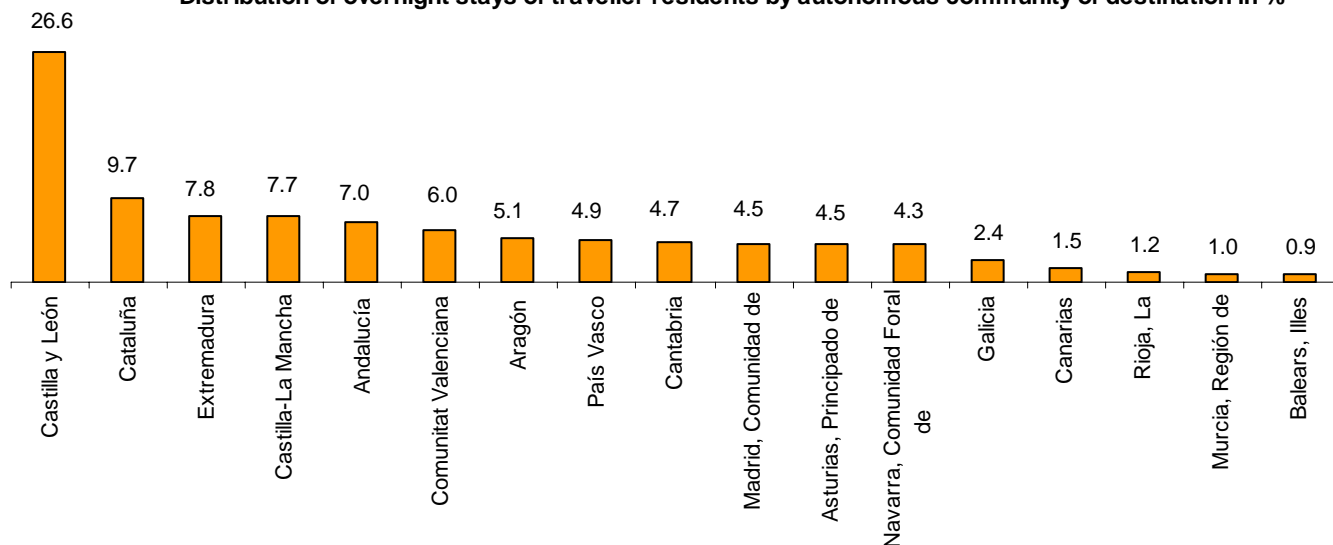
Occupancy rate by bedplaces and bedplaces on weekends



Castilla y León was the preferred destination, with 73,117 overnight stays, 58.7% less than in April 2012. Illes Balears reached the highest occupancy rate, with 38.1% of the offered bedplaces.

By tourist area, the island of Mallorca was the main destination, with 47,763 overnight stays and an occupancy rate of 41.1% of the offered bedplaces.

Distribution of overnight stays of traveller residents by autonomous community of destination in %



<sup>2</sup> Due to the update made in the rural tourist accommodation directory in Región de Murcia, the data published cannot be directly compared to those published last year. In order to avoid this break in the series, linking coefficients have been calculated, allowing for comparing the data from different years. The coefficients are published monthly on the INE website, in the section dedicated to this statistical operation, in a specific section entitled linking coefficient

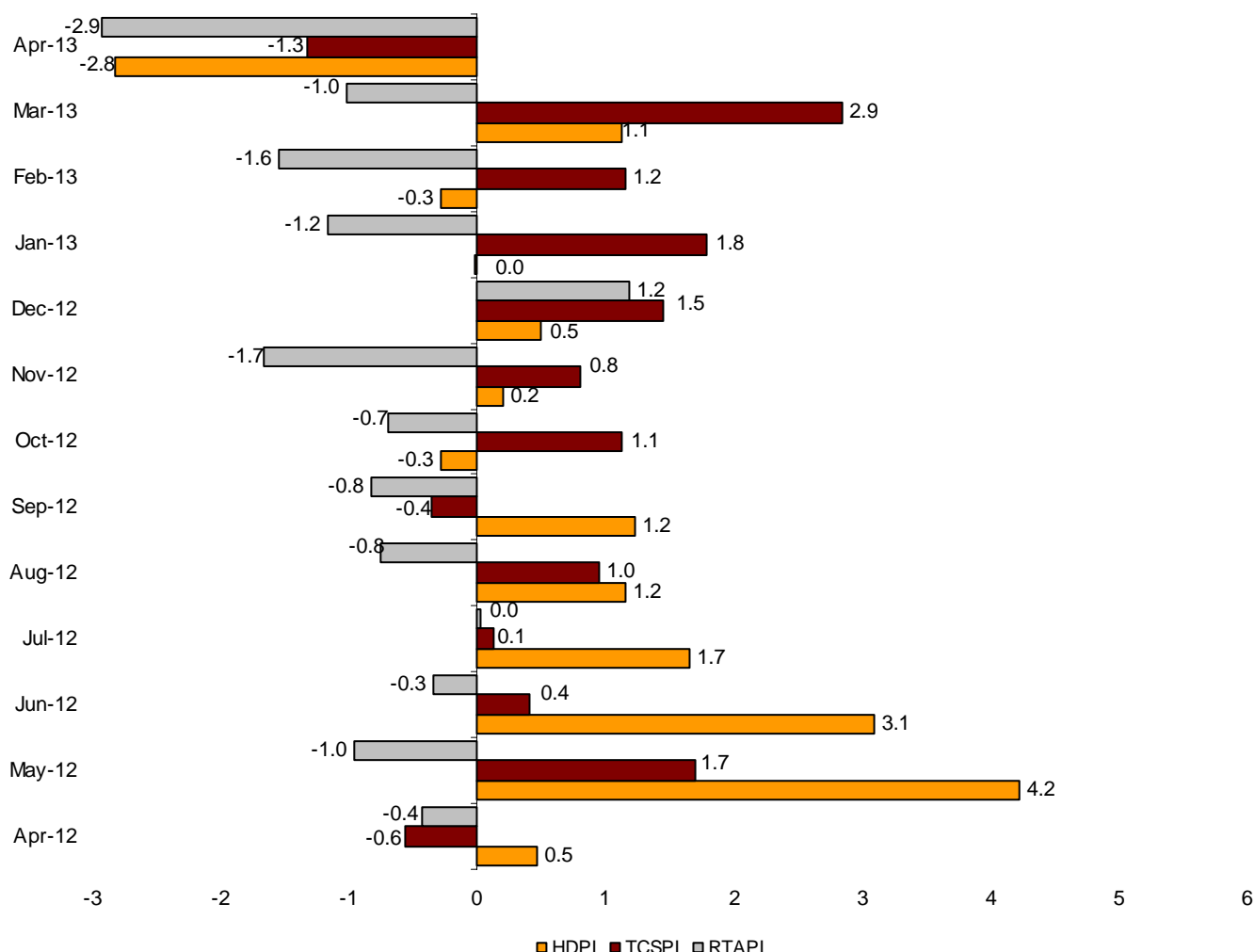
**Price Indices**

The Holiday Dwelling Price Index (HDPI) registered an annual decrease of 2.8%. The *tour operators and travel agencies* rate, which carried the greatest weight in the weighting structure for this month (54.7%), decreased 0.8%.

The Tourist Campsite Price Index (TCPI) registered a decrease of 1.3% in the annual rate. The *normal rate*, which had the greatest weight in the weighting structure for April (57.8%), increased 2.9%.

The Rural Tourism Accommodation Price Index (RTAPI) registered a decrease of 2.9% in April. The *weekend* rate, which accounted for 63.3% of the total weight, decreased 2.7%.

**Price Indices. Interannual variation rates**



**Performance of travellers and overnight stays in all Spanish collective tourist accommodation**

Overnight stays in Spanish collective tourist accommodation (hotels, holiday dwellings, campsites and rural tourism accommodation) registered a decrease of 12.7% in April <sup>(1)</sup>, as compared with the same month of the last year. Overnight stays by residents decreased 28.7%, whereas those of non-residents did so by 0.3%.

The average stay increased 0.9%, standing at 3.3 overnight stays per traveller.

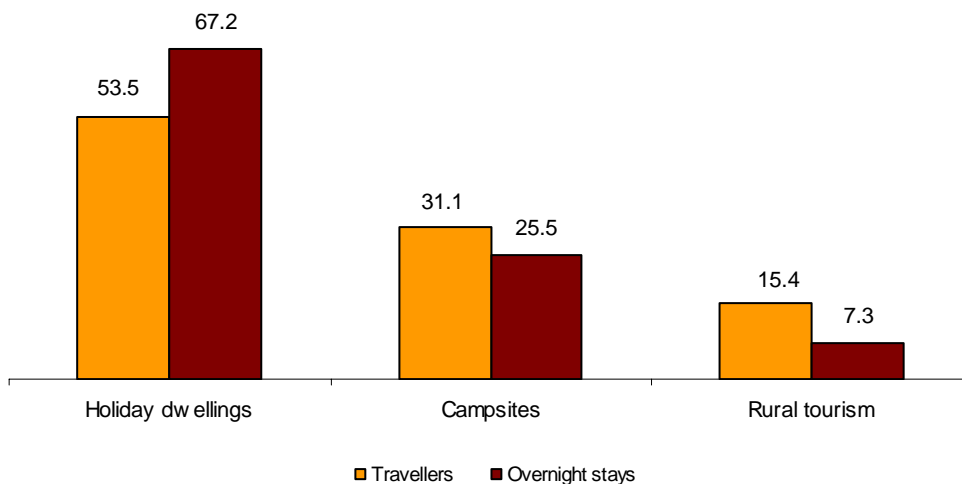
During the period **March-April** the number of overnight stays decreased by 2.0%.

Travellers and overnight stays in collective tourist accommodation were:

April 2013	Holiday dwellings	Campsites	Rural T.	Non-hotel	Hotels	Total
<b>Travellers</b>	544,125	316,491	157,064	1,017,680	6,282,260	7,299,940
Residents	165,836	201,886	125,243	492,965	3,112,438	3,605,403
Non-residents	378,289	114,605	31,821	524,715	3,169,822	3,694,537
<b>Overnight stays</b>	3,488,741	1,323,794	378,350	5,190,885	19,085,628	24,276,513
Residents	648,916	607,262	258,020	1,514,198	7,156,410	8,670,608
Non-residents	2,839,825	716,532	120,330	3,676,687	11,929,218	15,605,905

Of the total overnight stays in collective tourist accommodation in the month of April, 79% were accounted for hotels, and 21% did so for non-hotel tourist accommodation.

**Distribution of travellers and overnight stays by modality over total non-hotel accommodation in %**



The main countries of origin in overall regulated tourist accommodation were the United Kingdom (with 26.0% of the total number of non-resident overnight stays), Germany (21.8%) and France (9.9%).

Canarias was the preferred destination regarding overall tourist accommodation, with more than 6.3 million overnight stays (1.7% less than in April 2012). It was followed by Cataluña, with four million overnight stays (18.7% less) and Andalucía, with also four million overnight stays (12.0% less).

For further information see [INEbase-www.ine.es/en/](http://INEbase-www.ine.es/en/)

All press releases at: [www.ine.es/en/prensa/prensa\\_en.htm](http://www.ine.es/en/prensa/prensa_en.htm)

**Press Office:** Telephone numbers: 91 583 93 63 / 94 08 – Fax: 91 583 90 87 - [gprensa@ine.es](mailto:gprensa@ine.es)

**Information Area:** Telephone number: 91 583 91 00 – Fax: 91 583 91 58 – [www.ine.es/infoine/?L=1](http://www.ine.es/infoine/?L=1)

## Tourist Accommodation Occupancy Survey (Holiday Dwellings)

April 2013

Provisional data

### 1. Travellers, overnight stays and average stay by Autonomous Cities and Communities

Autonomous Cities and Communities	Travellers			Overnight stays			Average stay
	Total	Residents in Spain	Residents abroad	Total	Residents in Spain	Residents abroad	
TOTAL	544,125	165,836	378,289	3,488,741	648,916	2,839,825	6.41
Andalucía	98,147	37,155	60,992	457,866	112,352	345,514	4.67
Aragón	6,877	6,007	870	21,507	17,747	3,761	3.13
Asturias, Principado de	1,464	1,286	178	5,582	4,978	604	3.81
Balears, Illes	26,278	1,563	24,715	155,082	9,068	146,014	5.90
Canarias	251,046	42,044	209,002	2,057,369	171,072	1,886,297	8.20
Cantabria	3,218	2,854	364	10,652	9,009	1,642	3.31
Castilla y León	4,005	3,763	242	10,847	9,895	952	2.71
Castilla - La Mancha	3,518	3,292	226	10,020	8,692	1,328	2.85
Cataluña	43,189	16,879	26,309	229,595	110,926	118,669	5.32
Comunitat Valenciana	64,366	23,079	41,287	361,009	90,725	270,284	5.61
Extremadura	3,015	2,791	224	8,178	7,646	532	2.71
Galicia	3,359	2,833	526	9,126	7,678	1,449	2.72
Madrid, Comunidad de	25,495	14,389	11,105	100,816	52,159	48,657	3.95
Murcia, Región de	3,322	2,281	1,041	28,305	19,325	8,979	8.52
Navarra, Comunidad Foral de	3,034	2,641	392	9,276	8,070	1,207	3.06
País Vasco	2,170	1,448	722	9,826	6,098	3,728	4.53
Rioja, La	1,621	1,530	91	3,684	3,475	209	2.27
Ceuta	-	-	-	-	-	-	-
Melilla	-	-	-	-	-	-	-
Interannual rate	-11.39	-32.66	2.86	-7.54	-36.04	2.95	4.34
Cumulative interannual rate	1.53	-1.36	2.80	0.50	-6.23	1.91	-1.01

### 2. Capacity, occupancy and number of staff by Autonomous Cities and Communities

Autonomous Cities and Communities	Capacity		Level of occupancy				Employed personnel
	Estimated bedplaces	Estimated Holiday dwelling	Per bedplaces	Per bedplaces at weekend	Per Holiday dwelling	Per Holiday dwelling at weekend	
TOTAL	422,057	114,283	27.46	29.75	43.44	46.20	20,653
Andalucía	59,468	15,375	25.64	30.14	40.03	46.28	3,017
Aragón	6,329	1,478	11.31	17.24	18.04	24.16	443
Asturias, Principado de	3,359	882	5.54	6.64	9.66	10.88	215
Balears, Illes	20,358	6,466	25.30	27.22	37.52	39.58	1,158
Canarias	170,214	53,086	40.08	41.42	56.15	57.86	9,758
Cantabria	4,091	1,153	8.67	11.03	15.60	18.80	226
Castilla y León	4,256	902	8.49	16.51	14.63	22.75	363
Castilla - La Mancha	4,781	1,184	6.98	12.45	12.69	19.44	344
Cataluña	44,027	9,868	17.44	19.24	29.98	31.68	1,469
Comunitat Valenciana	77,924	16,121	15.43	17.49	28.48	31.38	1,945
Extremadura	1,696	422	16.06	22.24	21.55	30.86	159
Galicia	3,473	967	8.76	10.88	15.75	18.36	197
Madrid, Comunidad de	7,475	3,137	44.61	48.90	60.52	63.72	579
Murcia, Región de	10,212	2,180	9.24	9.31	18.16	18.25	331
Navarra, Comunidad Foral de	1,861	418	16.60	19.71	30.94	31.94	294
País Vasco	1,493	412	21.85	29.45	44.74	52.49	81
Rioja, La	1,041	233	11.75	24.10	15.71	28.51	75
Ceuta	-	-	-	-	-	-	-
Melilla	-	-	-	-	-	-	-
Interannual rate	0.54	0.48	-8.05	-9.57	-3.31	-4.04	2.63
Cumulative interannual rate	3.25	3.40	-1.85	-1.88	-1.79	-1.70	2.68

### 3. Travellers, overnight stays, capacity, occupancy, total number of staff with greater number of overnight stays \*

Provinces	Travellers		Overnight stays		Ave- rage stay	Capacity		Level of occupancy			Emple- yed per- sonnel
	Residents in Spain	Residents abroad	Residents in Spain	Residents abroad		Estimated bed- places	Estimated holiday dwelling	Per bed- places	Per Holiday dwelling	Per Holiday dwelling at weekend	
Palmas, Las	25,041	130,643	99,851	1,194,693	8.32	114,448	35,622	37.44	53.63	54.74	6,006
Santa Cruz de Tenerife	17,003	78,359	71,221	691,604	8.00	55,766	17,464	45.51	61.32	64.24	3,752
Málaga	9,091	43,501	34,098	286,895	6.10	32,706	8,154	32.79	51.73	54.78	1,825
Alicante\Alacant	15,806	34,708	62,702	230,693	5.81	55,549	11,692	17.60	32.44	35.39	1,468
Barcelona	8,753	18,285	81,872	79,494	5.97	11,113	3,216	48.34	68.31	70.75	584
Sevilla	7,985	8,703	23,420	24,511	2.87	4,157	1,389	37.82	57.39	67.62	226
Valencia\València	5,037	5,123	17,414	24,491	4.12	10,501	2,170	13.25	24.85	29.32	303
Almería	8,075	1,475	27,717	10,221	3.97	8,468	1,956	14.93	25.00	36.65	197
Girona	2,221	4,851	8,417	28,711	5.25	19,010	3,949	6.55	11.96	13.20	588
Tarragona	5,299	3,123	19,181	10,231	3.49	11,897	2,312	8.23	11.47	12.93	209
Castellón\Castelló	2,236	1,455	10,609	15,100	6.96	11,873	2,259	7.22	11.47	12.63	174
Granada	3,415	3,611	9,103	11,202	2.89	3,944	1,080	17.12	24.60	34.04	254
Cádiz	3,987	2,097	8,209	7,960	2.66	4,660	1,481	11.55	14.81	22.85	298
Zaragoza	1,779	609	5,028	2,696	3.23	967	274	26.58	46.73	54.97	71
Cáceres	2,559	150	7,092	396	2.76	1,468	369	16.99	21.47	31.02	144

### 4. Travellers, overnight stays, capacity, occupancy, total number of staff from tourist areas with greater number of overnight stays

Tourist Areas	Travellers		Overnight stays		Ave- rage stay	Capacity		Level of occupancy			Emple- yed per- sonnel
	Residents in Spain	Residents abroad	Residents in Spain	Residents abroad		Estimated bed- places	Estimated holiday dwelling	Per bed- places	Per Holiday dwelling	Per Holiday dwelling at weekend	
Isla de Tenerife	14,407	74,761	60,466	650,144	7.97	48,951	15,154	48.31	64.83	67.99	3,248
Isla de Gran Canaria	13,443	54,576	47,005	544,074	8.69	56,063	17,985	35.03	49.52	51.23	2,752
Isla de Lanzarote	7,268	56,841	37,632	466,243	7.86	41,409	12,184	40.34	59.16	59.23	2,442
Costa del Sol	8,032	42,462	31,443	281,391	6.20	30,877	7,710	33.76	53.33	56.36	1,758
Costa Blanca	14,989	34,503	59,842	229,746	5.85	53,074	11,211	18.18	33.27	36.32	1,405
Isla de Fuerteventura	4,329	19,225	15,214	184,376	8.47	16,976	5,453	38.32	54.80	56.29	812
Isla de Mallorca	945	23,944	4,421	138,545	5.74	18,457	5,952	25.72	37.84	39.99	1,097
Barcelona	5,402	15,500	11,992	53,138	3.12	4,363	1,094	49.63	75.23	81.50	373
Catalunya Central	272	34	49,201	9,095	30.00	2,503	906	77.62	88.79	89.98	47
Costa de Almería	7,883	1,308	27,237	10,054	4.06	8,238	1,912	15.09	25.13	36.81	179

### 5. Travellers, overnight stays, capacity, occupancy, total number of staff from tourist sites with greater number at overnights stays

Tourist sites	Travellers		Overnight stays		Ave- rage stay	Capacity		Level of occupancy			Emple- yed per- sonnel
	Residents in Spain	Residents abroad	Residents in Spain	Residents abroad		Estimated bed- places	Estimated holiday dwelling	Per bed- places	Per Holiday dwelling	Per Holiday dwelling at weekend	
San Bartolomé de Tirajana	10,933	35,739	38,276	372,953	8.81	38,413	12,118	35.55	51.68	53.40	1,756
Arona	2,849	34,731	9,424	303,420	8.32	20,575	6,443	50.62	68.13	70.83	1,363
Tías	3,607	31,353	15,462	245,875	7.48	20,721	6,525	41.74	58.97	58.83	1,071
Adeje	3,528	24,207	14,479	202,708	7.83	14,909	4,242	48.37	67.27	69.99	953
Mogán	1,940	18,453	5,933	167,348	8.50	16,068	5,223	35.86	48.37	50.08	900
Benidorm	5,088	21,897	25,578	136,822	6.02	18,272	4,447	29.63	47.81	52.71	803
Teguise	2,902	13,761	17,154	115,151	7.94	12,582	3,518	34.85	55.36	56.86	779
Antigua	2,207	8,770	8,043	89,835	8.92	7,019	2,180	44.66	61.93	64.62	333
Madrid	14,145	11,170	48,557	47,380	3.79	6,794	2,860	46.66	62.56	65.74	510
Yaiza	487	7,863	3,557	73,774	9.26	5,683	1,521	45.31	63.36	60.37	334

\* Provinces belonging to uniprovincial Autonomous Communities have not been included because they are reflected in previous tables.

## 6. Travellers and overnight stays by countries of residence

Countries	Travellers		Overnight stays	
	Total	%	Total	%
TOTAL	544,125	100.00	3,488,741	100.00
Residents in Spain	165,836	30.48	648,916	18.60
Residents abroad	378,289	69.52	2,839,825	81.40
Total residents abroad	378,289	100.00	2,839,825	100.00
Total residents in E.U (excluding Spain)	327,054	86.46	2,464,444	86.78
- Germany	47,280	12.50	462,751	16.30
- Austria	1,460	0.39	12,554	0.44
- Belgium	7,011	1.85	48,202	1.70
-Denmark	9,876	2.61	84,098	2.96
- Finland	9,437	2.49	90,468	3.19
- France	25,626	6.77	125,290	4.41
- Greece	497	0.13	1,719	0.06
- Ireland	16,890	4.46	110,312	3.88
- Italy	10,153	2.68	48,343	1.70
- Luxembourg	561	0.15	5,686	0.20
- Netherlands	25,461	6.73	176,909	6.23
- Poland	2,616	0.69	16,829	0.59
- Portugal	2,231	0.59	9,182	0.32
- United Kingdom	141,620	37.44	1,042,169	36.70
- Czech Republic	821	0.22	5,912	0.21
- Sweden	20,129	5.32	185,544	6.53
- Other EU countries	5,385	1.42	38,478	1.35
Norway	14,112	3.73	142,749	5.03
Other european countries	15,970	4.22	115,673	4.07
United States of America	5,760	1.52	28,561	1.01
Rest of America	6,162	1.63	41,097	1.45
African countries	2,283	0.60	12,818	0.45
Other countries	6,947	1.84	34,483	1.21

**Tourist Accommodation Occupancy Survey  
Campsite Occupancy Survey (COS)  
April 2013**

Provisional data

**1. Travellers, overnight stays and average stay by category of establishment**

Category	Travellers			Overnight stays			Average stay
	Total	Residents in Spain	Residents abroad	Total	Residents in Spain	Residents abroad	
TOTAL	316,491	201,886	114,605	1,323,794	607,262	716,532	4.18
Luxury and first-class	133,540	71,714	61,826	609,672	242,278	367,394	4.57
Second-class	156,534	108,999	47,535	655,482	322,500	332,982	4.19
Third-class	26,416	21,173	5,244	58,641	42,484	16,157	2.22
Interannual rate	-27.91	-39.21	7.19	-26.70	-47.08	8.79	1.67
Cumulative interannual rate	0.52	-5.30	15.68	0.69	-7.15	6.27	0.16

**2. Open establishments, capacity, occupancy and number of staff by category of establishments**

Category	Estimated open establishments	Capacity		Occupied pitches	Occupancy rate per pitch	Weekend occupancy rate	Employed personnel
		Estimated bedplaces	Estimated pitches				
TOTAL	796	546,655	169,683	1,383,653	27.18	28.89	5,084
Luxury and first-class	231	238,510	72,745	547,787	25.10	26.06	2,333
Second-class	441	267,851	84,354	717,490	28.35	29.97	2,386
Third-class	125	40,295	12,585	118,376	31.35	36.36	365
Interannual rate	-4.93	-3.62	-3.91	-9.56	-5.88	-8.23	-4.83
Cumulative interannual rate	3.91	4.49	4.51	2.00	-1.91	-1.90	4.73

**3. Travellers, overnight stays and average stay by Autonomous Cities and Communities**

Autonomous cities and communities	Travellers			Overnight stays			Average stay
	Total	Residents in Spain	Residents abroad	Total	Residents in Spain	Residents abroad	
TOTAL	316,491	201,886	114,605	1,323,794	607,262	716,532	4.18
Andalucía	43,758	17,417	26,341	157,443	51,726	105,717	3.60
Aragón	11,513	6,296	5,216	31,156	17,731	13,424	2.71
Asturias, Principado de	3,242	2,487	755	6,877	5,245	1,632	2.12
Balears, Illes*	-	-	-	-	-	-	-
Canarias*	-	-	-	-	-	-	-
Cantabria	10,330	9,134	1,196	33,482	30,336	3,145	3.24
Castilla y León	12,163	5,701	6,462	22,451	13,388	9,063	1.85
Castilla - La Mancha	4,068	2,881	1,187	7,065	5,154	1,911	1.74
Cataluña	139,977	100,361	39,616	524,230	296,917	227,313	3.75
Comunitat Valenciana	42,789	24,370	18,419	370,113	103,966	266,147	8.65
Extremadura	7,029	4,803	2,227	14,655	10,044	4,611	2.08
Galicia	1,612	1,083	528	5,135	4,274	861	3.19
Madrid, Comunidad de	12,088	8,015	4,073	32,374	19,681	12,693	2.68
Murcia, Región de	7,076	3,578	3,498	62,569	10,460	52,109	8.84
Navarra, Comunidad Foral de	6,619	5,629	990	17,492	14,902	2,591	2.64
País Vasco	5,179	3,155	2,024	11,853	7,592	4,261	2.29
Rioja, La	7,042	5,928	1,114	14,461	12,923	1,538	2.05
Ceuta	-	-	-	-	-	-	-
Melilla	-	-	-	-	-	-	-

\* The size of the sample in these communities does not facilitate the INE the broken down results, with the objective of maintaining statistical secrecy. Nevertheless, the data corresponding to these communities are included in the national total.

#### 4. Open establishments, capacity, occupancy and number of staff by autonomous cities and communities

Autonomous cities and communities	Estimated open establishments	Capacity		Occupied pitches	Occupancy rate per pitch	Weekend occupancy rate	Employed personnel
		Estimated bedplaces	Estimated pitches				
<b>TOTAL</b>	796	546,655	169,683	1,383,653	27.18	28.89	5,084
Andalucía	125	75,298	23,976	124,252	17.27	19.20	716
Aragón	72	27,102	8,286	48,334	19.44	20.09	243
Asturias, Principado de	25	14,697	4,743	17,918	12.59	19.61	76
Balears, Illes*	-	-	-	-	-	-	-
Canarias*	-	-	-	-	-	-	-
Cantabria	32	24,903	7,725	82,390	35.55	35.65	148
Castilla y León	58	23,646	6,810	38,159	18.68	22.14	149
Castilla - La Mancha	22	9,652	2,784	15,518	18.58	20.17	76
Cataluña	209	214,684	66,271	527,290	26.52	29.09	2,021
Comunitat Valenciana	100	67,168	21,138	266,224	41.98	42.04	777
Extremadura	28	11,326	3,474	25,599	24.56	28.36	136
Galicia	35	13,515	4,263	10,845	8.48	9.20	99
Madrid, Comunidad de	20	17,378	5,814	83,193	47.69	48.00	178
Murcia, Región de	19	14,932	4,944	41,515	27.99	30.17	155
Navarra, Comunidad Foral de	20	11,597	3,007	28,711	31.83	32.51	115
País Vasco	17	9,326	2,760	25,615	30.94	30.58	78
Rioja, La	9	7,083	2,249	39,178	58.06	59.22	59
Ceuta	-	-	-	-	-	-	-
Melilla	-	-	-	-	-	-	-

#### 5. Travellers and overnight stays, average stay, capacity, occupancy and number of staff by provinces with the greatest number of overnight stays\*\*

Provinces	Travellers		Overnight stays		Average stay	Estimated open establishments	Estimated pitches	Occupancy rate per pitch	Employed personnel
	Residents in Spain	Residents abroad	Residents in Spain	Residents abroad					
	Alicante\Alacant	5,957	7,155	38,759					
Girona	32,434	14,282	98,657	91,245	4.07	82	26,550	20.25	841
Tarragona	24,336	15,946	101,334	83,245	4.58	54	23,815	26.25	756
Barcelona	35,558	8,688	78,962	50,532	2.93	38	10,543	39.99	325
Castellón\Castelló	6,724	8,109	23,997	74,059	6.61	36	6,486	37.07	219
Valencia\València	11,689	3,155	41,210	23,491	4.36	31	5,704	38.39	196
Málaga	3,012	6,424	12,414	46,768	6.27	28	4,875	26.96	161
Almería	1,310	2,310	9,358	15,143	6.77	19	2,669	18.75	94
Cádiz	3,233	4,570	7,186	14,396	2.77	23	5,857	13.28	175
Lleida	8,032	700	17,965	2,291	2.32	36	5,364	32.30	98
Granada	2,314	5,380	5,034	13,520	2.41	22	2,737	14.85	98
Huesca	4,085	1,940	10,206	4,147	2.38	48	6,027	20.55	172
Huelva	4,135	977	10,011	3,071	2.56	8	4,349	15.84	83
Zaragoza	1,089	2,327	4,742	6,308	3.23	11	1,229	22.17	43
Salamanca	676	2,010	3,862	2,612	2.41	13	1,241	13.42	26

\* The size of the sample in these communities does not facilitate the INE the broken down results, with the objective of maintaining statistical secrecy. Nevertheless, the data corresponding to these communities are included in the national total.

\*\* Provinces belonging to uniprovincial Autonomous Communities have not been included because they are reflected in previous tables.

**6. Travellers, overnight stays, average stay, open establishments, capacity, occupancy and number of staff from tourist areas with the greatest number of overnight stays**

Tourist areas	Travellers		Overnight stays		Average stay	Estimated open establishments	Estimated pitches	Occupancy rate per pitch	Employed personnel
	Residents in	Residents abroad	Residents in	Residents abroad					
	Spain		Spain						
Costa Blanca	5,055	5,207	35,019	149,502	17.98	26	6,839	52.81	305
Costa Brava	27,227	14,053	89,517	90,831	4.37	63	24,454	18.51	779
Costa Daurada	21,904	14,050	76,332	76,771	4.26	42	21,598	25.47	655
Costa Barcelona	26,195	8,588	60,764	50,382	3.20	19	8,468	37.28	246
Costa de Castellón	4,881	7,524	20,518	73,075	7.54	30	5,979	37.58	204
P.N. Aiguamolls de l'Empordà	3,898	5,290	24,379	32,559	6.20	13	5,590	17.62	177
Costa del Sol	2,057	4,128	11,028	42,201	8.61	14	3,562	31.88	119
Costa Cálida	1,345	2,854	4,732	46,197	12.13	10	3,939	27.81	118
Costa Valencia	6,352	2,474	32,757	18,034	5.75	15	3,811	38.15	130
Pirineus	19,134	846	37,526	1,797	1.97	58	7,879	36.74	179
Terres de l'Ebre	2,432	1,896	25,002	6,473	7.27	12	2,217	33.87	101
P. N. Delta de l'Ebre	1,394	1,006	21,416	2,884	10.13	6	1,286	45.30	56
Costa de Almería	1,247	2,250	9,271	13,498	6.51	14	2,314	18.09	76
Costa de la Luz (Cádiz)	2,825	3,869	6,431	13,108	2.92	20	5,284	12.24	158
Pirineo Aragonés	3,895	1,696	9,933	3,950	2.48	44	5,743	19.87	165

**7. Travellers, overnight stays, average stay, open establishments, capacity, occupancy and number of staff from tourist sites with the greatest number at overnights stays**

Tourist sites	Travellers		Overnight stays		Average stay	Estimated open establishments	Estimated pitches	Occupancy rate per pitch	Employed personnel
	Residents in	Residents abroad	Residents in	Residents abroad					
	Spain		Spain						
Benidorm	1,042	1,399	9,225	101,834	30.00	9	3,797	60.33	119
Castell-Platja d'Aro	3,056	1,528	16,826	23,855	8.87	5	4,321	16.74	57
Salou	2,768	1,630	17,527	16,960	7.84	3	2,735	16.66	62
Mont-Roig del Camp	2,966	4,559	10,583	22,553	4.40	6	4,441	17.75	139
Cartagena	284	1,764	1,395	30,447	15.55	3	2,537	21.62	64
Marbella	616	1,841	6,024	24,053	12.24	3	1,310	36.01	50
Blanes	9,321	1,291	21,192	5,714	2.54	9	3,384	36.23	132
Benicasim/Benicàssim	378	2,135	2,734	21,417	9.61	5	1,051	50.15	43
Oliva	1,009	1,612	5,882	17,918	9.08	6	1,412	30.36	79
Peñíscola	876	2,539	3,915	19,270	6.79	8	1,287	35.54	48
Sant Pere Pescador	1,494	1,433	3,965	10,880	5.07	4	1,128	20.31	65
Tarragona	2,840	1,762	8,216	6,295	3.15	4	2,436	32.02	134

## 8. Travellers and overnight stays by countries of residence

Countries	Travellers		Overnight stays	
	Total	%	Total	%
TOTAL	316,491	100.00	1,323,794	100.00
Residents in Spain	201,886	63.79	607,262	45.87
Residents abroad	114,605	36.21	716,532	54.13
TOTAL residents abroad	114,605	100.00	716,532	100.00
TOTAL residents in E.U. (excluding Spain)	108,518	94.69	689,051	96.16
- Germany	22,834	19.92	141,781	19.79
- Austria	1,051	0.92	3,224	0.45
- Belgium	4,688	4.09	35,892	5.01
- Denmark	1,156	1.01	8,147	1.14
- Finland	821	0.72	5,831	0.81
- France	31,278	27.29	111,985	15.63
- Greece	15	0.01	48	0.01
- Ireland	672	0.59	13,056	1.82
- Italy	1,639	1.43	4,150	0.58
- Luxembourg	133	0.12	812	0.11
- Netherlands	20,994	18.32	133,891	18.69
- Poland	668	0.58	1,859	0.26
- Portugal	1,992	1.74	7,175	1.00
- United Kingdom	18,057	15.76	208,441	29.09
- Czech Republic	307	0.27	770	0.11
- Sweden	1,452	1.27	10,288	1.44
- Other EU countries	761	0.66	1,701	0.24
Other European countries	4,268	3.72	21,451	2.99
United States of America	154	0.13	397	0.06
Rest of America	306	0.27	998	0.14
African countries	12	0.01	201	0.03
Other countries	1,346	1.17	4,433	0.62

**Tourist accommodation occupancy survey:  
(Rural tourist accommodation)**

**April 2013**

Provisional data

**1. Number of travellers, overnight stays and average stay by Autonomous Cities and Communities**

Autonomous Communities	Number of travellers			Number of overnight stays			Average stay
	Total	Residents In Spain	Residents abroad	Total	Residents In Spain	Residents abroad	
<b>TOTAL<sup>1</sup></b>	157,064	125,243	31,821	378,350	258,020	120,330	2.41
Andalucía	12,270	7,340	4,929	41,370	18,071	23,299	3.37
Aragón	7,231	6,227	1,004	16,861	13,260	3,601	2.33
Asturias, Principado de	5,497	5,276	220	11,958	11,547	411	2.18
Balears, Illes	12,618	1,090	11,528	51,032	2,334	48,698	4.04
Canarias	4,280	1,174	3,106	23,697	3,922	19,775	5.54
Cantabria	6,715	6,165	550	13,005	12,051	953	1.94
Castilla y León	36,544	33,757	2,787	73,117	68,755	4,362	2.00
Castilla-La Mancha	10,182	9,956	227	21,220	19,924	1,296	2.08
Cataluña	15,288	13,616	1,672	29,801	25,116	4,685	1.95
Comunitat Valenciana	6,965	6,547	418	17,690	15,555	2,135	2.54
Extremadura	10,134	9,179	955	23,228	20,056	3,173	2.29
Galicia	5,568	3,936	1,632	8,527	6,305	2,222	1.53
Madrid, Comunidad de	7,553	7,082	471	12,658	11,606	1,052	1.68
Murcia, Región de <sup>1</sup>	1,544	1,376	167	2,962	2,480	482	1.92
Navarra, Comunidad Foral de	5,846	4,791	1,054	12,651	11,177	1,474	2.16
País Vasco	7,202	6,257	946	14,967	12,654	2,313	2.08
Rioja, La	1,628	1,475	154	3,606	3,206	400	2.21
Ceuta	-	-	-	-	-	-	-
Melilla	-	-	-	-	-	-	-
Interannual rate	-43.00	-48.59	-0.42	-51.09	-60.38	-1.66	-14.20
Cumulative interannual rate	-15.70	-17.70	2.48	-16.83	-19.65	-4.45	-1.34

**2. Open rural tourist accommodation and estimated vacancies, levels of occupancy and personnel employed by Autonomous Cities and Communities**

Autonomous Communities	Nº of rural open estimated accom.	Nº of vacancies	Level of occupancy			Employed personnel
			By vacancies	By vacancies at week end	By rooms	
<b>TOTAL<sup>1</sup></b>	15,328	143,017	8.80	18.46	10.66	21,512
Andalucía	1,497	12,922	10.65	16.43	15.03	2,047
Aragón	1,128	8,789	6.38	14.05	7.45	1,256
Asturias, Principado de	1,328	12,119	3.29	7.15	4.21	1,618
Balears, Illes	228	4,456	38.08	44.36	42.66	1,149
Canarias	635	3,942	19.99	22.42	29.62	935
Cantabria	358	6,655	6.50	13.12	7.83	483
Castilla y León	3,506	30,856	7.88	21.58	9.00	4,815
Castilla-La Mancha	1,416	11,758	6.01	17.53	6.77	1,856
Cataluña	1,665	13,502	7.35	21.83	8.91	2,214
Comunitat Valenciana	996	9,262	6.34	11.98	7.23	1,431
Extremadura	505	6,059	12.71	26.21	15.12	760
Galicia	527	6,588	4.31	9.26	4.42	795
Madrid, Comunidad de	236	4,190	10.05	22.29	14.95	586
Murcia, Región de <sup>1</sup>	118	1,760	5.61	14.14	8.73	158
Navarra, Comunidad Foral de	684	5,018	8.38	19.86	10.17	814
País Vasco	394	4,140	12.00	23.24	14.25	475
Rioja, La	108	1,001	11.94	31.93	12.37	119
Ceuta	-	-	-	-	-	-
Melilla	-	-	-	-	-	-
Interannual rate	-0.68	-0.64	-50.50	-37.67	-46.46	-1.96
Cumulative interannual rate	-0.86	-1.20	-15.51	-8.92	-15.41	-0.07

<sup>1</sup> Due to the updating in the directory of establishments carried out in Región de Murcia, the data to be published since January 2013 (for Navarra and the national total) are not directly comparable with the data published last year, therefore, data link coefficients have been calculated to allow the comparison of data between different years. These coefficients are available in INE website ([www.ine.es](http://www.ine.es))

### 3. Number of travellers, overnight stays and average stay of provinces with the greatest number of overnight stays<sup>2</sup>

Provinces	Number of travellers			Number of overnight stays			Average stay
	Total	Residents In Spain	Residents abroad	Total	Residents In Spain	Residents abroad	
Cáceres	8,999	8,161	838	21,252	18,304	2,948	2.36
Santa Cruz de Tenerife	2,873	764	2,109	17,699	2,857	14,842	6.16
Málaga	3,325	1,179	2,145	17,615	3,413	14,203	5.30
Ávila	6,281	6,056	224	14,016	13,606	410	2.23
Girona	6,755	5,625	1,130	12,994	9,933	3,062	1.92
Segovia	5,596	5,459	137	11,289	11,041	248	2.02
Burgos	5,387	4,810	577	10,662	9,888	774	1.98
Valencia\València	3,659	3,391	267	9,825	8,572	1,253	2.69
Salamanca	4,648	4,524	124	9,143	8,887	256	1.97
León	4,725	3,871	854	8,796	7,670	1,126	1.86
Barcelona	4,679	4,402	276	8,608	7,781	827	1.84
Gipuzkoa	4,080	3,506	575	8,316	6,883	1,433	2.04
Huesca	2,844	2,252	592	7,591	5,696	1,895	2.67
Cuenca	3,049	2,992	57	6,783	6,076	708	2.22
Soria	3,086	3,007	79	6,061	5,918	143	1.96

### 4. Open rural tourist accommodation and estimated vacancies degrees of occupancy and personnel employed in provinces with the highest number of overnight stays<sup>2</sup>

Provinces	Nº of rural open estimated accommodation	Nº of vacancies	Level of occupancy			Employed personnel
			By vacancies	By vacancies at the weekend	By rooms	
Cáceres	438	5,292	13.31	27.22	15.76	663
Santa Cruz de Tenerife	511	2,953	19.97	21.96	30.05	747
Málaga	615	4,144	14.12	18.10	22.35	708
Ávila	811	6,009	7.77	24.03	9.97	1,189
Girona	543	4,440	9.75	28.82	11.20	751
Segovia	388	3,598	10.42	32.47	10.17	536
Burgos	407	4,198	8.45	24.33	9.63	473
Valencia\València	294	3,263	9.98	14.60	9.64	463
Salamanca	506	4,054	7.49	19.15	8.27	677
León	458	3,970	7.37	15.49	8.94	651
Barcelona	435	3,857	7.42	23.91	8.91	655
Gipuzkoa	178	1,956	14.10	26.20	17.49	224
Huesca	580	4,348	5.81	10.94	7.09	652
Cuenca	295	3,097	7.29	22.34	8.48	383
Soria	335	3,101	6.50	18.32	7.26	420

<sup>2</sup> Provinces belonging to uniprovincial Autonomous Communities have not been included because they are reflected in previous tables.

## 5. Number of travellers, overnight stays, average stay, estimated vacancies, levels of occupancy and personnel employed in areas with the highest number of overnight stays

Areas	Number of travellers		Number of overnight stays		Average stay	Capacity		Level of occupancy		
	Residents In Spain	Residents abroad	Residents In Spain	Residents abroad		Nº of rural open esti-mated accom.	Nº of vacancies	By vacancies	By vacancies at week end	By rooms
Isla de Mallorca	694	10,862	1,519	46,244	4.13	200	3,868	41.05	46.27	46.03
Pirineo Navarro	4,265	204	10,546	296	2.43	599	4,333	8.31	20.74	10.23
Costa Brava	3,896	1,125	6,746	3,057	1.95	345	2,969	10.99	30.47	12.77
Isla de Tenerife	526	1,355	1,246	7,551	4.68	117	1,168	25.09	25.61	34.64
Isla de La Palma	165	492	1,317	6,138	11.34	263	1,139	21.83	25.92	35.43
Pirineus	3,595	57	7,091	161	1.99	660	4,868	4.96	16.44	5.62
Pirineo Aragonés	2,156	531	5,392	1,595	2.60	535	4,070	5.71	11.21	6.09
P.Nacional Teide	354	1,043	827	5,912	4.82	79	846	26.54	26.82	34.86
Catalunya Central	2,686	143	4,755	438	1.84	267	2,292	7.53	24.43	9.23
P.Natural Sierras de Tejeda, Almjara y Alhama	16	488	295	4,512	9.54	105	651	24.60	18.45	41.78
P.Nacional Picos de Europa	1,983	171	4,271	322	2.13	262	2,441	6.27	13.03	7.75
P.Nacional Taburiente	145	280	1,208	3,114	10.17	143	649	22.21	29.09	35.13
Pirineo Vasco	1,810	113	3,715	570	2.23	136	1,403	10.16	19.34	11.38
Isla Gran Canaria	300	633	784	3,169	4.24	97	631	20.63	26.61	30.59
Costa de Gipuzkoa	1,474	370	2,962	694	1.98	56	661	18.29	33.30	21.01

## 6. Number of travellers, overnight stays, average stay, estimated vacancies, levels of occupancy and personnel employed class per rural house per Autonomous Cities and Communities<sup>3</sup>

Autonomous Communities	Number of travellers		Number of overnight stays		Average stay	Capacity		Level of occupancy		Employed personnel
	Residents In Spain	Residents abroad	Residents In Spain	Residents abroad		Nº of rural open esti-mated accom.	Nº of vacancies	By vacancies	By vacancies at week end	
TOTAL	75,369	15,186	163,824	63,551	2.51	12,543	96,839	7.80	17.81	15,988
Andalucía	6,686	4,608	16,928	22,788	3.52	1,478	12,354	10.69	16.26	1,988
Aragón	4,963	912	9,323	3,177	2.13	823	6,369	6.52	14.68	918
Asturias, Principado de	2,431	23	6,134	69	2.53	880	5,449	3.79	7.99	1,006
Balears, Illes	292	2,701	712	10,365	3.70	60	819	44.55	52.64	173
Canarias	486	1,579	2,516	12,713	7.37	604	3,083	16.45	18.41	788
Cantabria	1,105	37	2,580	160	2.40	123	2,002	4.56	11.02	156
Castilla y León	18,544	713	40,432	1,303	2.17	2,982	20,173	6.88	21.12	3,684
Castilla-La Mancha	9,310	222	18,850	1,291	2.11	1,379	11,084	6.05	17.84	1,790
Cataluña	10,311	1,439	19,417	4,108	2.00	1,396	10,633	7.37	21.36	1,842
Comunitat Valenciana	3,689	363	8,881	1,790	2.63	962	7,350	4.83	10.53	1,313
Extremadura	4,026	516	9,762	1,849	2.56	300	2,802	13.66	28.08	420
Galicia	2,390	348	3,867	587	1.63	370	4,359	3.40	8.70	505
Madrid, Comunidad de	817	27	1,648	91	2.06	61	580	9.99	31.84	72
Murcia, Región de	839	6	1,672	192	2.20	110	1,520	4.09	12.78	128
Navarra, Comunidad Foral de	4,791	1,054	11,177	1,474	2.16	684	5,018	8.38	19.86	814
País Vasco	3,213	485	6,719	1,193	2.14	224	2,243	11.71	22.28	272
Rioja, La	1,475	154	3,206	400	2.21	108	1,001	11.94	31.93	119
Ceuta	-	-	-	-	-	-	-	-	-	-
Melilla	-	-	-	-	-	-	-	-	-	-

<sup>3</sup> To facilitate the comparability between data from different Autonomous Communities (and because of the different regulation and different characteristics), a group called rural house has been created, with those accommodations with similar typology (location, capacity, etc...).

The variables included in the previous table have been estimated with that type of establishments.

The variables shown in the table have been estimated with the type of accommodation under rural tourist accommodation.

**7. Travellers and overnight stays by country of residence**

Results by countries	Travellers		Overnight stays	
	Total	%	Total	%
TOTAL	157,064	100.00	378,350	100.00
Residents Spain	125,243	79.74	258,020	68.20
Residents abroad	31,821	20.26	120,330	31.80
Total Residents abroad	31,821	100.00	120,330	100.00
Total Residents in UE (excluding Spain)	26,379	82.90	106,796	88.75
- Germany	9,774	30.72	50,450	41.93
- Belgium	1,184	3.72	4,527	3.76
- France	4,754	14.94	10,532	8.75
- Italy	860	2.70	1,936	1.61
- Netherlands	2,064	6.49	10,308	8.57
- Portugal	364	1.14	1,038	0.86
- United Kingdom	5,612	17.64	21,475	17.85
Switzerland	1,971	6.20	5,339	4.44
Other European countries	2,424	7.62	8,253	6.86
United States of America	1,283	4.03	2,669	2.22
Other countries	1,529	4.81	3,802	3.16

## HOLIDAY DWELLING PRICE INDEX (HDPI)

April 2013

Provisional data

### National general index and breakdown by rates

	Index	Interannual variation rate
TOTAL	105.23	-2.82
Normal	106.59	-5.48
Weekend	107.16	-4.28
Tour-operators and travel agencies	105.12	-0.77

### National general index and breakdown by modalities

	Index	Interannual variation rate
TOTAL	105.23	-2.82
Studio	108.33	-3.24
Dwellings 2/4 bedplaces	103.35	-1.70
Dwellings 4/6 bedplaces	112.03	-6.27

## Tourist Campsite Price Index (TCSPI). 2002 Base

April 2013

Provisional data

### National general index and breakdown by rates

	Index	Interannual variation rate
TOTAL	135.06	-1.33
Normal rate	134.42	-2.92
Special rate for stays up to one month	139.86	3.00
Special rate for stays longer than one month	138.02	0.69

### National general index and breakdown by categories

	Index	Interannual variation rate
TOTAL	135.06	-1.33
Luxury and first	124.31	-1.68
Second	141.73	-0.94
Third	143.97	-1.71

## Rural Tourism Accommodation Price Index (RTAPI)

April 2013

Provisional data

### General Autonomous Cities and Communities and national indices

	Index	Variation Rate interannual
<b>TOTAL</b>	<b>123.48</b>	<b>-2.93</b>
Andalucía	130.51	1.10
Aragón	139.47	-3.40
Asturias, Principado de	127.62	-3.27
Balears, Illes	103.08	-3.33
Canarias	118.48	-3.50
Cantabria	126.89	-11.80
Castilla y León	126.07	-3.79
Castilla - La Mancha	118.15	-6.50
Cataluña	137.39	1.58
Comunitat Valenciana	126.90	-2.12
Extremadura	104.79	-4.20
Galicia	121.95	-4.07
Madrid, Comunidad de	124.03	-1.44
Murcia, Región de	150.79	3.94
Navarra, Comunidad Foral de	170.39	-1.32
País Vasco	132.89	-1.37
Rioja, La	134.82	1.70
Ceuta	-	-
Melilla	-	-

### National general index and breakdown by rates

	Index	Variation Rate interannual
<b>TOTAL</b>	<b>123.48</b>	<b>-2.93</b>
Normal	119.97	-3.33
Weekend	128.73	-2.69

### National general index and breakdown by rent modality

	Index	Variation Rate interannual
<b>TOTAL</b>	<b>123.48</b>	<b>-2.93</b>
Shared use (in case of per room rent modality)	112.64	-3.87
Full use (rent of entire dwelling)	130.88	-2.42