

31 May 2017

Non-hotel Tourist Accommodation Occupancy Survey
April 2017. *Provisional data*

Overnight stays in non-hotel tourist accommodation¹ increase 41.2% in April, as compared with the same month in 2016

Overnight stays in non-hotel tourist accommodation (holiday dwellings, tourist campsites, rural tourism accommodation and youth hostels) exceeded 9.7 million in April, 41.2% more than in the same month of 2016. Overnight stays by residents increased by 96.2% and those of non-residents did so by 15.8%. The average stay stood at 4.2 overnight stays per traveller.

During the first four months of 2017, overnight stays increased 8.2% with respect to the same period the previous year.

Given that in 2017 Holy Week is celebrated in April, while in 2016 it was held in March, it is convenient to analyse the **aggregate period March-April**. In that period, overnight stays increased by 10.9% as compared with the same two-month period of 2016 (overnight stays of residents increased by 16.0% and those of non-residents did so by 8.2%).

Travellers and overnight stays in collective non-hotel tourist accommodation during the month of April were:

April 2017	Travellers	Overnight stays
Residents in Spain	1,426,712	4,290,148
EU (not including Spain)	784,942	4,860,684
Rest of the world	136,880	623,090
TOTAL	2,348,534	9,773,922

Holiday dwellings

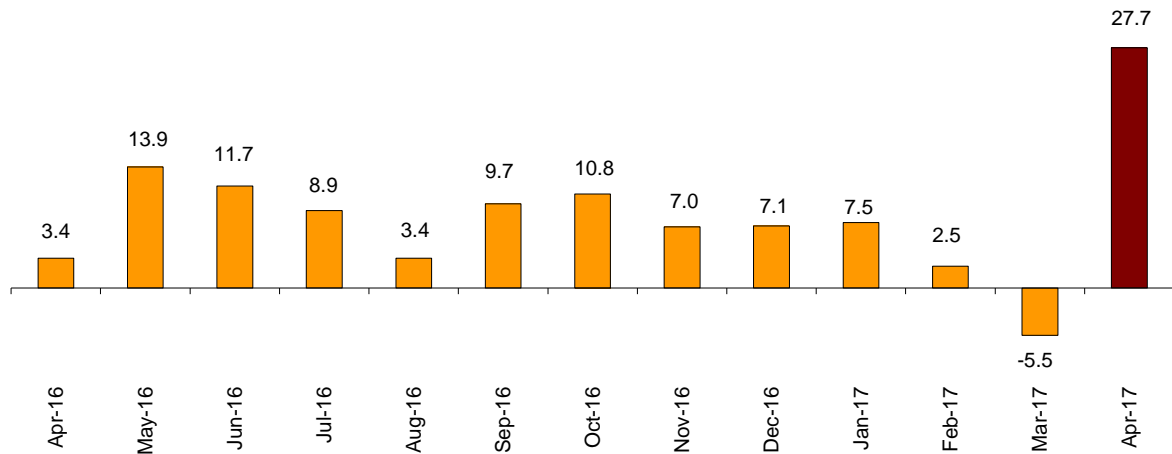
Overnight stays in holiday dwellings increased by 27.7% in April. Resident overnight stays grew by 77.0% and those of non-residents increased by 15.6%. During the aggregate **March-April** period, the number of overnight stays increased 10.2% as compared with the same period in 2016. Resident overnight stays grew by 18.6% and non-residents by 8.1%.

The average stay decreased 7.3% as compared with April 2016, standing at 5.1 overnight stays per traveller.

In April, 36.3% of the bedplaces available for holiday dwellings were occupied, 9.8% more than in the same month of 2016. The weekend occupancy rate by bedplaces stood at 40.4%, with an increase of 11.4%.

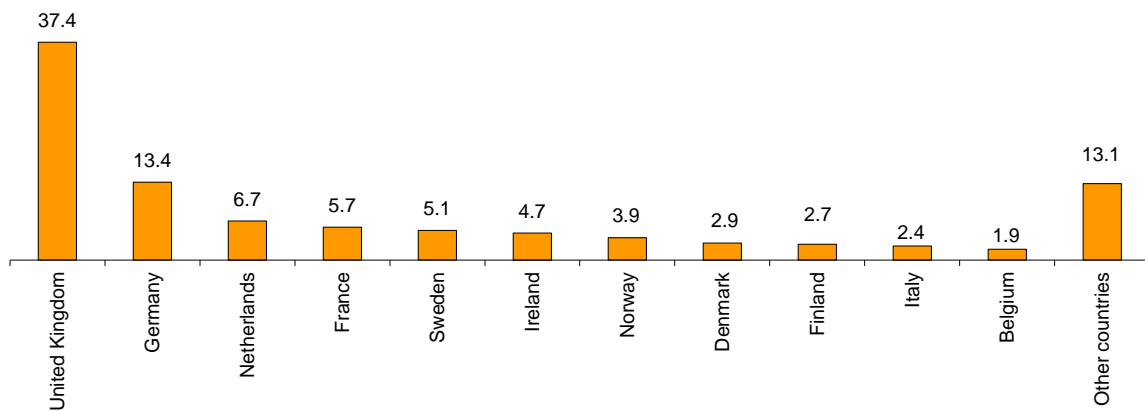
¹ Given that in 2017 Holy Week is celebrated in April, while in 2016 it was held in March, it is convenient to analyse both months together.

Overnight stays annual growth rate in holiday dwellings in %



Non-resident overnight stays in holiday dwellings represented 72.7% of the total. The United Kingdom was the main country of origin, with 1.5 million overnight stays, that is, 15.7% more than in April 2016. The following country of origin was Germany, with 546,063 overnight stays, that is, a 8.9% more.

Distribution of overnight stays of residents abroad of the 11 main countries by origin



Canarias was the preferred holiday dwelling destination, with more than 2.6 million overnight stays, 15.2% more than in April 2016. This Autonomous Community presented the highest occupancy rate, with 75.4% of holiday dwellings offered.

By tourist areas, the island of Tenerife was the preferred destination, with 890,994 overnight stays. The island of Lanzarote registered the highest occupancy rate, with 85.4% of the holiday dwellings offered.

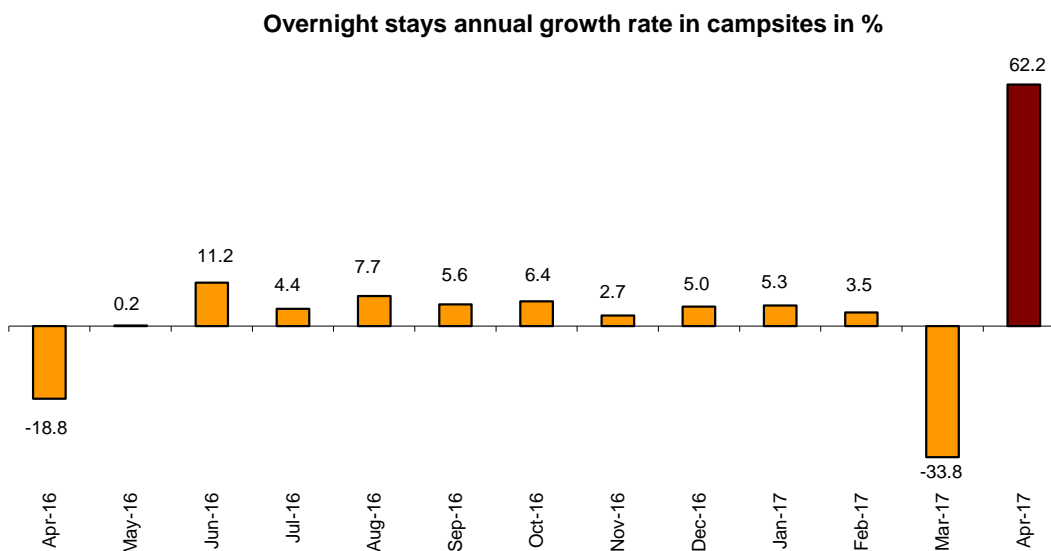
The tourist sites with the greatest number of overnight stays in April were San Bartolomé de Tirajana, Arona and Tías.

Tourist campsites

Overnight stays at tourist campsites registered an annual increase of 62.2% in April as compared to the same month of the previous year. Resident overnight stays grew by 120.2% and those of non-residents increased by 14.8%. During the **March-April** period, overnight stays increased by 11.0%.

During the month of April, 35.2% of the offered pitches were occupied, 17.3% more than in the same month of 2016. The weekend occupancy rate by pitch reached 38.9%, with an annual increase of 21.2%.

38.9% of overnight stays on tourist campsites were by non-residents travellers. The United Kingdom was the main country of origin with 25.4% of overnight stays by non-residents, 5.6% more than in April 2016.



Cataluña was the preferred destination for camping, with more than 1.1 million overnight stays, 72.0% more in the annual rate. La Rioja reached the highest occupancy rate on tourist campsites, with 68.3% of the pitches offered.

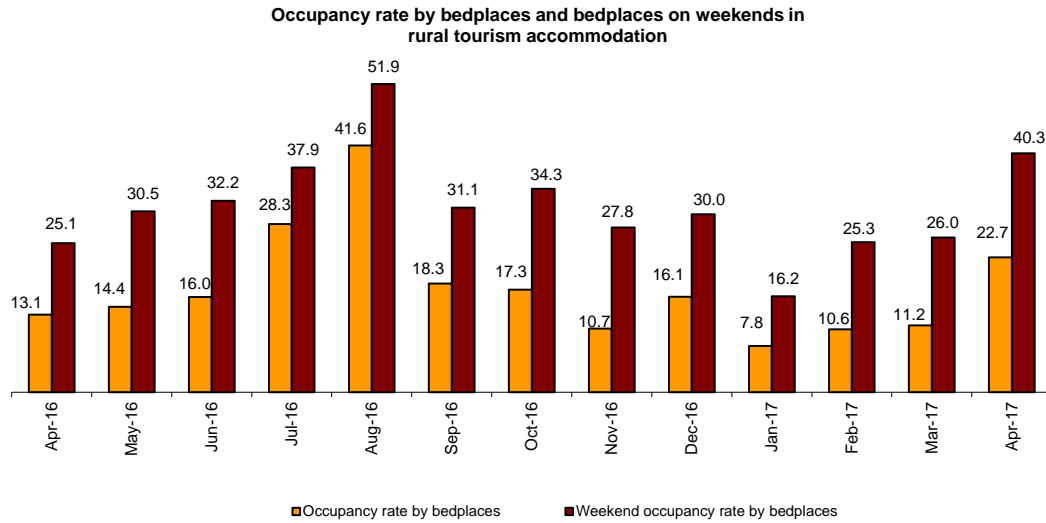
By tourist area, Costa Daurada was the preferred destination for camping, with 446,890 overnight stays. The Costa Blanca reached the highest occupancy rate, with 68.4% of the available lots covered.

The tourist sites with the highest number of overnight stays were Benidorm, Mont-Roig Del Camp and Salou.

Rural tourism accommodation

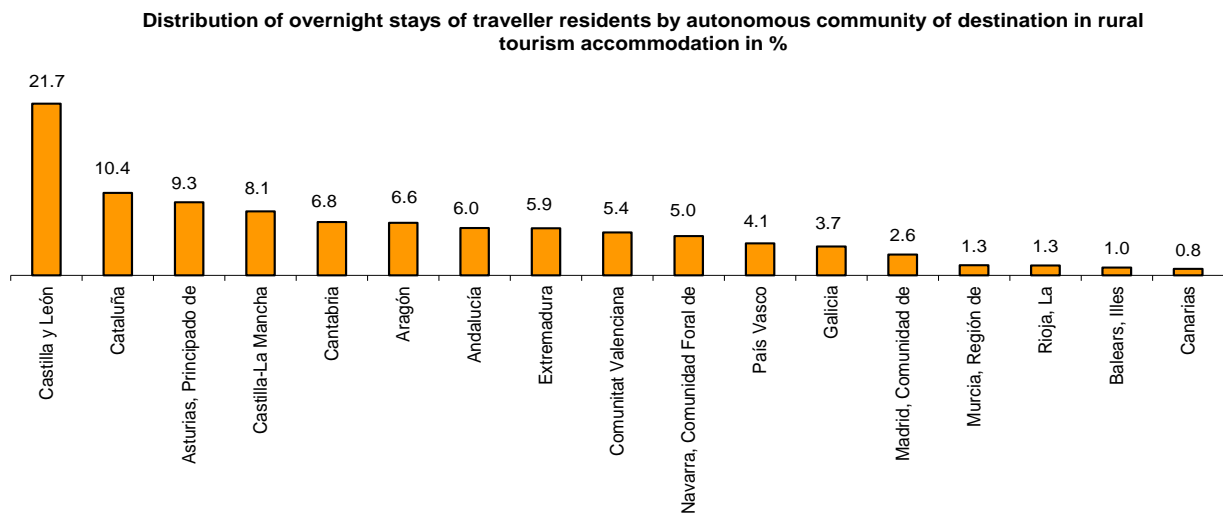
Overnight stays in rural tourism accommodation presented an annual increase of 83.2% in April. Resident overnight stays grew by 107.6% and those of non-residents increased by 27.6%. During the **March-April** period, overnight stays increased by 16.2%.

In rural tourism accommodation, 22.7% of the bedplaces were occupied, 73.9% more than in April 2016. The weekend occupancy rate stood at 40.3%, with an annual increase of 60.5%.



By Autonomous Community, Castilla y León was the preferred destination, with 194,622 overnight stays, 79.6% more than in April 2016. Illes Balears reached the highest occupancy rate, with 42.6% of the bedplaces offered.

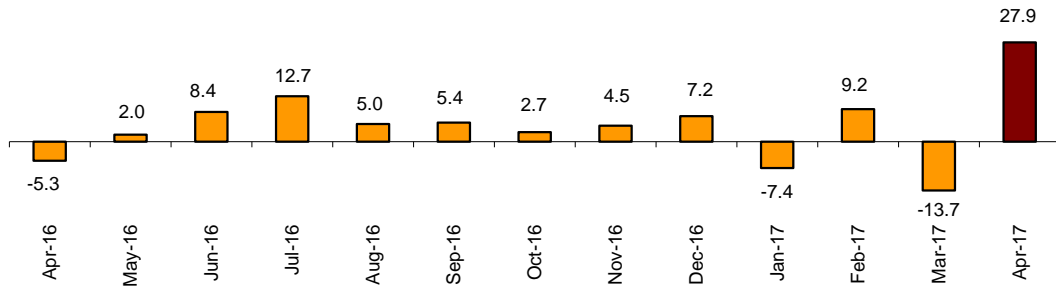
By tourist area, the island of Mallorca was the main destination, with 73,496 overnight stays and with an occupancy of 43.0% of the bedplaces offered.



Youth Hostels

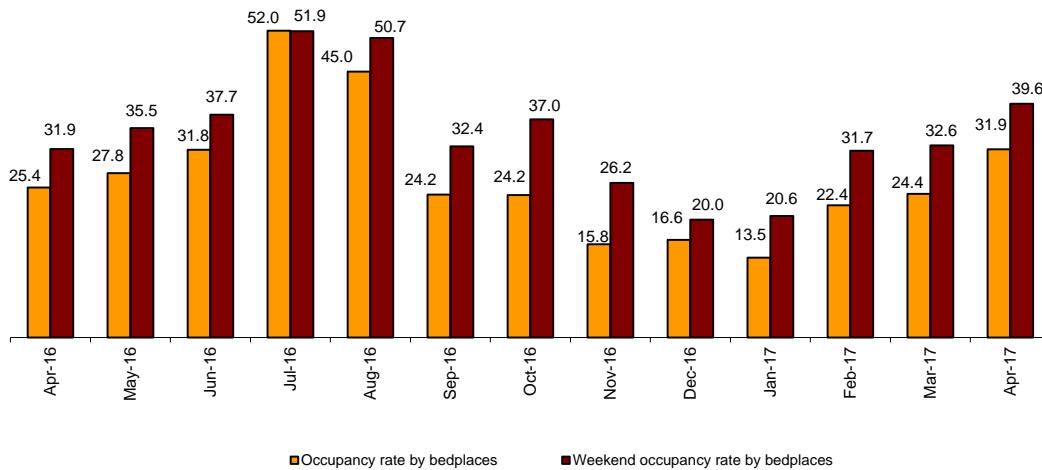
Overnight stays in hostels registered an annual increase of 27.9% in April. Resident overnight stays grew by 37.7% and those of non-residents increased by 10.2%. During the **March-April** period, overnight stays increased 6.8%.

Overnight stays annual growth rate in hostel in %



In April, 31.9% of the bedplaces were occupied, 25.5% more than in the same month of 2016. The weekend occupancy rate reached 39.6%, with a 24.0% increase.

Occupancy rate by bedplaces and bedplaces on weekends in hostel



By Autonomous Community, Cataluña was the preferred destination, with 100,398 overnight stays, 22.2% more than in April 2016. This Community also reached the highest occupancy rate, with 50.0% of the bedplaces offered.

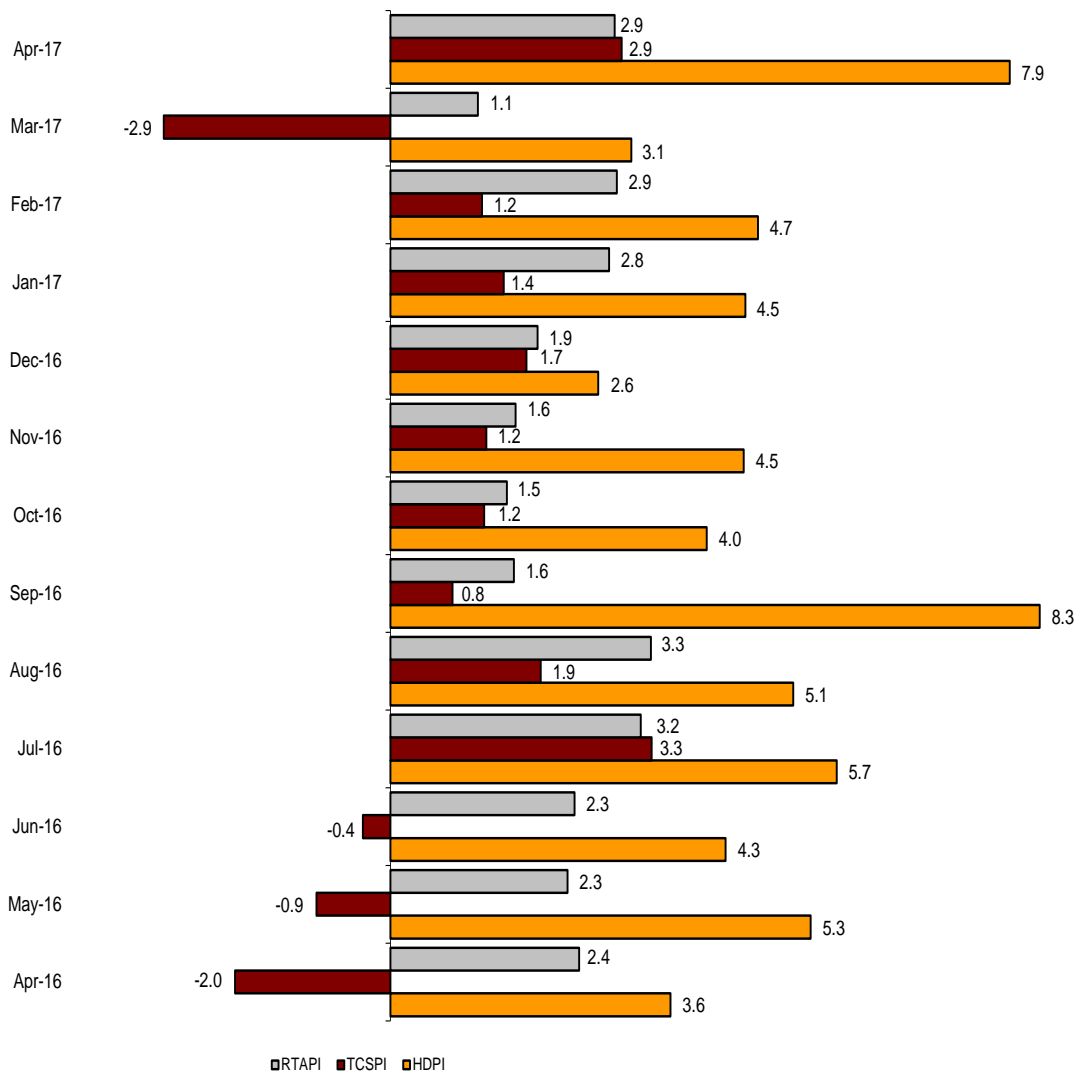
Price indices

The Holiday Dwelling Price Index (HDPI) increased 7.9%, as compared to April 2016. The rate for *tour-operators and travel agencies*, which carried the greatest weight in the weighting structure for this month (51.8%), increased 8.8%.

The Tourist Campsite Price Index (TCPI) increased by 2.9% in the annual rate. The *bungalow* rate, which carried the greatest weight in the weightings structure in April (37.8%), grew by 1.1% as compared with the same month of 2016.

The Rural Tourism Accommodation Price Index (RTAPI) registered a 2.9% increase in April. The *weekend rate*, which accounted for 68.2% of the total weight, increased by 2.8% in the annual rate.

Price Indices. Annual variation rates



Evolution of travellers and overnight stays in all Spanish collective tourist accommodation

In April, overnight stays in Spanish collective tourist accommodation (hotels², holiday dwellings, tourist campsites, rural tourism accommodation and youth hostels) registered a 24.4% increase in the annual rate. Resident overnight stays grew by 47.2% and those of non-residents increased by 12.7%. During the **March-April** period, overnight stays increased 7.4%.

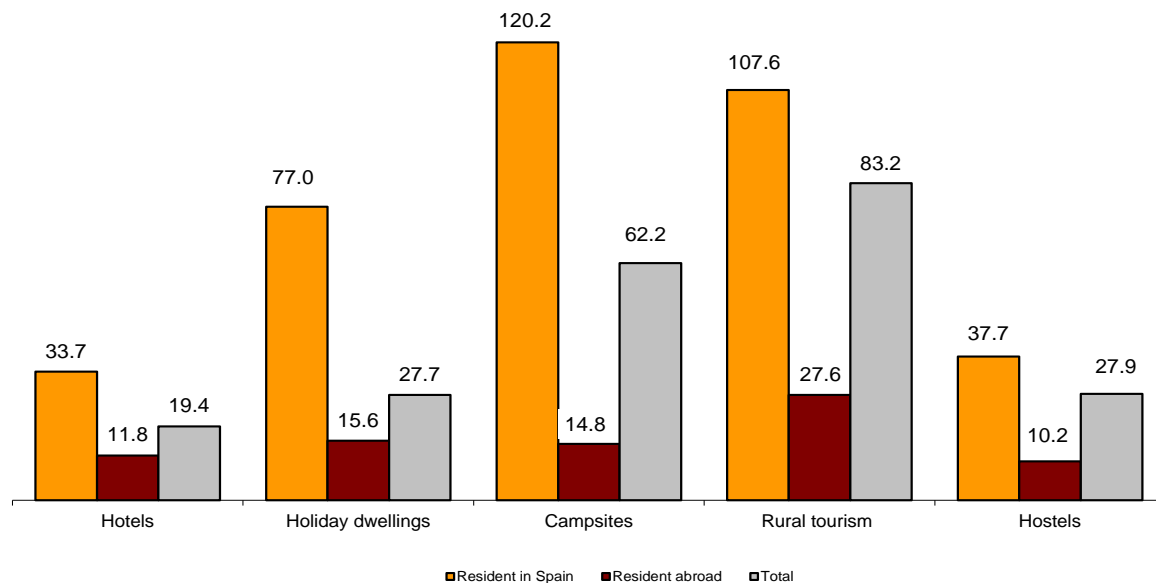
The average stay increased 0.5%, and stood at 3.2 overnight stays per traveller.

Travellers and overnight stays in collective tourist accommodation were:

April 2017	Holiday dwelling	Campsites	Rural T.	Non-hotel	Hotels	Hotels	Total
Travellers	1,094,919	733,767	415,065	104,782	2,348,533	9,160,914	11,509,447
Residents	460,525	542,825	347,742	75,620	1,426,712	4,652,450	6,079,162
Non-residents	634,394	190,942	67,323	29,163	921,822	4,508,464	5,430,286
Overnight stays	5,597,119	2,839,953	1,095,033	241,817	9,773,922	27,518,253	37,292,175
Residents	1,525,705	1,734,803	862,101	167,539	4,290,148	10,671,305	14,961,453
Non-residents	4,071,414	1,105,150	232,932	74,278	5,483,774	16,846,948	22,330,722

Of the total overnight stays in collective tourist accommodation, 74% corresponded to hotels, and 26% to non-hotel tourist accommodation.

Overnight stays annual growth rate in collective tourist accommodation



The main countries of origin in overall regulated tourist accommodation were The United Kingdom (with 25.6% of the total number of non-resident overnight stays), Germany (20.0%) and France (10.1%).

Canarias was the preferred destination, with over 8.5 million overnight stays (12.1% more than in April 2016). It was followed by Cataluña, with over 6.5 million overnight stays (and an increase of 31.5%) and Andalucía, with over 6.1 million, (an increase of 21.1%).

² The press release corresponding to Hotel Tourism Short-Term Trends was published on 23 May.

Tourist Accommodation Occupancy Survey (Holiday Dwellings)

April 2017

Provisional data

1. Travellers, overnight stays and average stay by Autonomous Cities and Communities

Autonomous Cities and Communities	Travellers			Overnight stays			Average stay
	Total	Residents in Spain	Residents abroad	Total	Residents in Spain	Residents abroad	
TOTAL	1,094,919	460,525	634,394	5,597,119	1,525,705	4,071,414	5.11
Andalucía	240,851	110,802	130,048	891,427	297,337	594,090	3.70
Aragón	22,080	20,159	1,921	61,551	55,134	6,417	2.79
Asturias, Principado de	12,184	11,680	504	30,954	29,411	1,543	2.54
Balears, Illes	56,732	8,808	47,923	308,897	33,780	275,117	5.44
Canarias	355,403	69,820	285,583	2,653,559	296,355	2,357,204	7.47
Cantabria	15,082	14,038	1,045	41,010	37,371	3,639	2.72
Castilla y León	17,239	16,044	1,195	45,764	42,180	3,585	2.65
Castilla - La Mancha	13,186	12,479	707	37,627	35,174	2,453	2.85
Cataluña	94,596	50,584	44,013	393,340	198,351	194,989	4.16
Comunitat Valenciana	156,497	77,495	79,002	768,704	291,191	477,513	4.91
Extremadura	7,544	6,824	720	17,616	16,333	1,283	2.34
Galicia	12,618	10,165	2,453	33,945	27,920	6,025	2.69
Madrid, Comunidad de	53,140	24,395	28,744	177,362	76,541	100,820	3.34
Murcia, Región de	11,188	8,266	2,922	53,881	32,616	21,265	4.82
Navarra, Comunidad Foral de	6,382	4,951	1,430	20,784	15,125	5,659	3.26
País Vasco	15,259	9,603	5,656	46,950	28,544	18,405	3.08
Rioja, La	4,940	4,413	527	13,748	12,342	1,406	2.78
Ceuta	-	-	-	-	-	-	-
Melilla	-	-	-	-	-	-	-
Annual rate	37.77	72.53	20.19	27.66	77.04	15.58	-7.34
Cumulative annual rate	12.65	15.92	11.02	7.76	14.41	6.32	-4.33

2. Capacity, occupancy and number of staff by Autonomous Cities and Communities

Autonomous Cities and Communities	Capacity		Level of occupancy				Employed personnel
	Estimated bedplaces	Estimated Holiday dwelling	Per bedplaces	Per bedplaces at weekend	Per Holiday dwelling	Per Holiday dwelling at weekend	
TOTAL	510,024	128,499	36.30	40.44	55.84	60.47	26,951
Andalucía	76,834	19,246	38.43	44.05	57.29	63.99	4,596
Aragón	7,178	1,632	28.38	41.45	37.27	51.66	521
Asturias, Principado de	4,965	1,265	20.66	28.86	27.68	37.31	341
Balears, Illes	20,919	6,262	48.83	52.01	63.77	67.50	1,754
Canarias	156,325	47,633	55.89	56.77	75.37	76.64	11,362
Cantabria	4,679	1,163	29.15	41.67	40.44	53.47	303
Castilla y León	5,960	1,329	25.46	40.41	36.46	50.37	547
Castilla - La Mancha	5,729	1,375	21.87	34.98	31.54	46.08	407
Cataluña	47,881	10,627	27.20	34.10	42.65	50.95	1,849
Comunitat Valenciana	145,018	28,436	17.59	21.58	30.49	35.73	3,133
Extremadura	1,830	432	31.88	40.83	45.35	56.21	179
Galicia	4,381	1,131	25.50	33.13	40.02	49.22	337
Madrid, Comunidad de	10,503	3,908	56.08	60.43	75.10	78.44	661
Murcia, Región de	9,544	2,179	18.82	22.12	33.88	38.38	323
Navarra, Comunidad Foral de	2,375	509	29.01	34.13	41.00	45.86	301
País Vasco	4,375	1,035	35.61	45.29	53.13	63.20	221
Rioja, La	1,528	335	29.78	48.09	40.64	60.54	118
Ceuta	-	-	-	-	-	-	-
Melilla	-	-	-	-	-	-	-
Annual rate	15.66	12.00	9.78	11.44	5.06	6.99	11.59
Cumulative annual rate	9.09	6.65	-0.51	-1.55	1.00	0.28	7.44

3. Travellers, overnight stays, capacity, occupancy, total number of staff with greater number of overnight stays *

Provinces	Travellers		Overnight stays			Capacity		Level of occupancy			Employed personnel
	Residents in Spain	Residents abroad	Residents in Spain	Residents abroad	Average stay	Estimated bed-places	Estimated holiday dwelling	Per bed-places	Per Holiday dwelling	Per Holiday dwelling at weekend	
Palmas, Las	43,143	183,267	174,521	1,515,908	7.47	102,428	30,933	54.29	76.23	77.05	7,073
Santa Cruz de Tenerife	26,677	102,316	121,834	841,296	7.47	53,897	16,699	58.95	73.77	75.87	4,288
Málaga	40,989	94,679	116,683	496,675	4.52	46,631	11,488	43.68	67.59	72.65	2,956
Alicante\Alacant	35,462	62,204	151,437	391,823	5.56	105,223	20,780	17.10	30.39	34.50	2,350
Barcelona	10,314	22,937	74,512	107,474	5.47	10,756	3,157	57.18	77.20	81.53	685
Castellón\Castelló	28,028	6,356	90,056	38,097	3.73	23,327	4,294	18.29	27.16	37.22	398
Tarragona	19,757	11,664	64,802	46,541	3.54	18,530	3,638	19.96	30.25	42.45	618
Valencia\València	14,005	10,442	49,698	47,594	3.98	16,468	3,363	19.68	35.37	41.34	384
Sevilla	18,994	19,042	46,481	49,053	2.51	5,460	1,660	57.03	75.22	78.90	380
Girona	17,276	9,324	48,801	40,408	3.35	16,268	3,355	18.28	28.17	35.71	455
Almería	17,221	2,358	48,115	9,828	2.96	9,241	2,095	20.88	32.11	43.22	307
Granada	9,375	6,948	22,796	18,000	2.50	4,344	1,211	31.11	37.87	45.89	366
Cádiz	9,608	3,326	28,495	10,884	3.04	5,005	1,305	25.94	33.66	43.57	319
Gipúzkoa	5,177	4,111	15,516	13,710	3.15	2,792	593	34.81	44.73	57.96	130
Huesca	8,301	672	27,037	1,739	3.21	3,903	847	24.46	29.55	43.81	297

4. Travellers, overnight stays, capacity, occupancy, total number of staff from tourist areas with greater number of overnight stays

Tourist Areas	Travellers		Overnight stays			Capacity		Level of occupancy			Employed personnel
	Residents in Spain	Residents abroad	Residents in Spain	Residents abroad	Average stay	Estimated bed-places	Estimated holiday dwelling	Per bed-places	Per Holiday dwelling	Per Holiday dwelling at weekend	
Isla de Tenerife	21,863	95,918	104,070	786,924	7.56	47,885	14,628	61.35	76.38	78.43	3,757
Isla de Gran Canaria	24,869	82,053	95,006	695,015	7.39	53,338	15,947	49.01	70.34	71.34	3,447
Isla de Lanzarote	10,104	75,266	47,608	599,044	7.57	33,988	10,215	62.06	85.42	85.94	2,547
Costa del Sol	36,524	89,702	105,366	477,138	4.61	42,314	10,583	45.70	70.21	75.23	2,837
Costa Blanca	34,550	55,618	149,005	373,991	5.80	102,892	20,348	16.94	30.26	34.23	2,249
Isla de Mallorca	7,636	44,934	29,318	265,136	5.60	19,298	5,775	50.44	64.77	68.54	1,655
Isla de Fuerteventura	8,171	25,948	31,906	221,849	7.44	15,101	4,771	55.44	76.24	77.08	1,080
Costa de Castellón	27,101	6,348	83,088	38,075	3.62	22,643	4,132	17.81	26.52	36.81	368
Costa Daurada	17,994	11,183	61,142	43,743	3.59	17,931	3,512	19.43	29.55	41.37	577
Costa Barcelona	5,511	4,338	61,623	40,003	10.32	5,038	1,715	67.07	81.15	83.88	187

5. Travellers, overnight stays, capacity, occupancy, total number of staff from tourist sites with greater number at overnights stays

Tourist sites	Travellers		Overnight stays			Capacity		Level of occupancy			Employed personnel
	Residents in Spain	Residents abroad	Residents in Spain	Residents abroad	Average stay	Estimated bed-places	Estimated holiday dwelling	Per bed-places	Per Holiday dwelling	Per Holiday dwelling at weekend	
San Bartolomé de Tirajana	15,554	48,169	64,241	432,266	7.79	34,679	10,289	47.33	69.95	70.72	2,090
Arona	6,568	41,637	33,102	351,578	7.98	19,611	6,047	64.80	78.09	80.41	1,648
Tías	4,126	39,688	20,106	320,046	7.76	17,545	5,505	62.95	85.51	86.07	1,127
Adeje	2,656	32,263	12,762	257,893	7.75	14,324	4,059	62.26	82.98	83.62	927
Mogán	7,084	31,192	23,361	246,809	7.06	17,298	5,059	51.75	71.78	73.00	1,205
Benidorm	7,725	30,071	40,323	186,048	5.99	19,384	4,634	38.93	62.11	70.54	664
Teguise	4,430	22,253	23,297	169,308	7.22	9,750	2,928	64.58	86.51	88.03	713
Madrid	23,839	28,743	71,832	100,531	3.28	10,015	3,675	57.14	75.76	79.08	633
Puerto de la Cruz	8,400	8,492	38,918	74,818	6.73	6,464	2,558	58.08	69.35	72.82	578
Mijas	1,765	16,636	6,660	97,280	5.65	8,609	1,647	40.24	74.30	73.14	569

* Provinces belonging to uniprovincial Autonomous Communities have not been included because they are reflected in previous tables.

6. Travellers and overnight stays by countries of residence

Countries	Travellers		Overnight stays	
	Total	%	Total	%
TOTAL	1,094,919	100.00	5,597,119	100.00
Residents in Spain	460,525	42.06	1,525,705	27.26
Residents abroad	634,394	57.94	4,071,414	72.74
Total residents abroad	634,394	100.00	4,071,414	100.00
Total residents in E.U (excluding Spain)	538,842	84.94	3,568,802	87.66
- Germany	70,615	11.13	546,063	13.41
- Austria	3,295	0.52	19,840	0.49
- Belgium	12,451	1.96	76,553	1.88
-Denmark	15,459	2.44	118,875	2.92
- Finland	13,442	2.12	111,578	2.74
- France	50,796	8.01	231,657	5.69
- Greece	531	0.08	2,214	0.05
- Ireland	29,330	4.62	189,765	4.66
- Italy	20,908	3.30	98,576	2.42
- Luxembourg	761	0.12	3,666	0.09
- Netherlands	41,166	6.49	273,188	6.71
- Poland	9,074	1.43	49,284	1.21
- Portugal	12,445	1.96	52,748	1.30
- United Kingdom	222,883	35.13	1,524,036	37.43
- Czech Republic	1,628	0.26	10,076	0.25
- Sweden	24,701	3.89	208,571	5.12
- Other EU countries	9,357	1.47	52,112	1.28
Norway	17,241	2.72	157,263	3.86
Russia	7,615	1.20	39,065	0.96
Switzerland	7,954	1.25	45,646	1.12
Other european countries	8,094	1.28	46,285	1.14
United States of America	14,320	2.26	48,993	1.20
Rest of America	15,469	2.44	73,727	1.81
African countries	4,167	0.66	16,891	0.41
Other countries	20,691	3.26	74,742	1.84

Tourist Accommodation Occupancy Survey Campsite Occupancy Survey (COS)

April 2017

Provisional data

1. Travellers, overnight stays and average stay by category of establishment

Category	Travellers			Overnight stays			Average stay
	Total	Residents in Spain	Residents abroad	Total	Residents in Spain	Residents abroad	
TOTAL	733,767	542,825	190,942	2,839,953	1,734,803	1,105,150	3.87
Luxury and first-class	316,960	220,996	95,964	1,315,104	776,989	538,114	4.15
Second-class	352,756	266,471	86,284	1,343,808	805,012	538,796	3.81
Third-class	64,051	55,357	8,694	181,042	152,802	28,240	2.83
Annual rate	77.87	115.45	18.91	62.23	120.17	14.80	-8.80
Cumulative annual rate	11.89	14.90	5.84	8.65	11.50	6.72	-2.90

2. Open establishments, capacity, occupancy and number of staff by category of establishments

Category	Estimated open establishments	Capacity		Occupied pitches	Occupancy rate per pitch	Weekend occupancy rate	Employed personnel
		Estimated bedplaces	Estimated pitches				
TOTAL	852	569,465	177,122	1,872,257	35.23	38.91	6,266
Luxury and first-class	229	240,405	72,844	756,218	34.60	37.93	2,763
Second-class	486	281,090	89,068	946,155	35.41	39.45	3,055
Third-class	137	47,970	15,210	169,885	37.23	40.15	447
Annual rate	4.56	2.16	2.61	20.35	17.29	21.17	11.38
Cumulative annual rate	-4.54	-5.95	-5.16	0.57	7.02	6.25	-0.51

3. Travellers, overnight stays and average stay by Autonomous Cities and Communities

Autonomous cities and communities	Travellers			Overnight stays			Average stay
	Total	Residents in Spain	Residents abroad	Total	Residents in Spain	Residents abroad	
TOTAL	733,767	542,825	190,942	2,839,953	1,734,803	1,105,150	3.87
Andalucía	90,174	58,821	31,353	326,801	189,156	137,646	3.62
Aragón	32,301	23,425	8,876	87,730	63,493	24,237	2.72
Asturias, Principado de	10,973	9,681	1,292	28,492	26,018	2,474	2.60
Balears, Illes*	-	-	-	-	-	-	-
Canarias*	-	-	-	-	-	-	-
Cantabria	25,177	21,039	4,138	99,105	85,534	13,571	3.94
Castilla y León	25,001	14,836	10,165	58,201	42,286	15,914	2.33
Castilla - La Mancha	13,662	10,754	2,908	35,182	29,383	5,799	2.58
Cataluña	326,112	250,650	75,462	1,186,020	788,878	397,141	3.64
Comunitat Valenciana	100,498	71,585	28,913	657,455	258,647	398,808	6.54
Extremadura	16,213	11,973	4,240	42,843	32,045	10,799	2.64
Galicia	6,222	4,423	1,799	15,739	12,543	3,196	2.53
Madrid, Comunidad de	21,499	17,862	3,637	75,618	67,028	8,591	3.52
Murcia, Región de	14,115	9,772	4,344	86,791	34,745	52,045	6.15
Navarra, Comunidad Foral de	16,891	14,267	2,624	45,458	40,753	4,705	2.69
País Vasco	19,456	11,306	8,150	42,431	27,757	14,673	2.18
Rioja, La	10,647	8,973	1,674	32,230	28,290	3,940	3.03
Ceuta	-	-	-	-	-	-	-
Melilla	-	-	-	-	-	-	-

* The size of the sample in these communities does not facilitate the INE the broken down results, with the objective of maintaining statistical secrecy. Nevertheless, the data corresponding to these communities are included in the national total.

4. Open establishments, capacity, occupancy and number of staff by autonomous cities and communities

Autonomous cities and communities	Estimated open establishments	Capacity		Occupied pitches	Occupancy rate per pitch	Weekend occupancy rate	Employed personnel
		Estimated bedplaces	Estimated pitches				
TOTAL	852	569,465	177,122	1,872,257	35.23	38.91	6,266
Andalucía	131	76,656	24,991	181,355	24.19	29.57	956
Aragón	77	27,865	8,388	64,652	25.69	33.66	321
Asturias, Principado de	25	15,088	5,000	27,352	18.23	25.38	100
Balears, Illes*	-	-	-	-	-	-	-
Canarias*	-	-	-	-	-	-	-
Cantabria	31	23,874	7,585	98,722	43.39	41.97	199
Castilla y León	59	24,584	7,678	54,136	23.50	27.35	196
Castilla - La Mancha	24	9,693	2,940	24,214	27.46	28.83	100
Cataluña	230	224,822	67,932	720,210	35.34	39.44	2,440
Comunitat Valenciana	117	72,397	22,858	382,181	55.73	56.69	984
Extremadura	25	9,983	3,169	29,020	30.52	40.20	133
Galicia	36	15,082	4,871	16,437	11.25	12.15	106
Madrid, Comunidad de	20	17,934	5,974	87,427	48.78	51.17	184
Murcia, Región de	19	15,341	5,043	51,840	34.27	41.06	186
Navarra, Comunidad Foral de	22	13,970	3,742	39,600	35.28	37.29	126
País Vasco	19	9,949	2,875	33,318	38.63	51.69	114
Rioja, La	9	8,083	2,450	50,195	68.30	63.80	60
Ceuta	-	-	-	-	-	-	-
Melilla	-	-	-	-	-	-	-

5. Travellers and overnight stays, average stay, capacity, occupancy and number of staff by provinces with the greatest number of overnight stays**

Provinces	Travellers		Overnight stays		Average stay	Estimated open establishments	Estimated pitches	Occupancy rate per pitch	Employed personnel
	Residents in Spain	Residents abroad	Residents in Spain	Residents abroad					
Tarragona	93,303	26,171	363,306	148,666	4.29	53	22,261	38.64	775
Girona	84,116	32,328	242,593	161,252	3.47	90	26,976	28.42	1,125
Alicante\Alacant	19,097	13,761	79,562	271,275	10.68	43	9,837	64.01	406
Barcelona	57,488	16,109	140,006	85,357	3.06	46	12,248	46.46	407
Castellón\Castelló	22,206	8,843	86,861	89,818	5.69	38	6,658	49.20	306
Valencia\València	30,282	6,309	92,224	37,716	3.55	36	6,363	49.76	272
Málaga	12,804	6,333	49,307	53,647	5.38	30	4,872	37.27	217
Huelva	9,866	5,452	39,255	18,826	3.79	11	4,811	22.08	166
Cádiz	12,819	5,252	36,192	19,112	3.06	24	6,298	17.70	214
Huesca	17,362	3,338	44,134	7,711	2.50	49	6,099	26.54	219
Lleida	15,743	853	42,973	1,866	2.70	41	6,447	31.77	133
Granada	7,325	5,739	18,760	18,481	2.85	23	2,788	25.12	109
Almería	5,140	1,969	20,383	14,642	4.93	17	2,577	25.02	101
Gipúzkoa	7,426	5,448	17,150	11,176	2.20	9	1,612	35.51	58
Zaragoza	2,093	4,663	7,755	13,225	3.11	15	1,380	24.91	58

** Provinces belonging to uniprovincial Autonomous Communities have not been included because they are reflected in previous tables.

6. Travellers, overnight stays, average stay, open establishments, capacity, occupancy and number of staff from tourist areas with the greatest number of overnight stays

Tourist areas	Travellers		Overnight stays		Average stay	Estimated open establishments	Estimated pitches	Occupancy rate per pitch	Employed personnel
	Residents in Spain	Residents abroad	Residents in Spain	Residents abroad					
Costa Daurada	80,650	22,771	312,783	134,107	4.32	42	20,064	38.03	675
Costa Brava	69,811	32,101	203,777	160,509	3.57	67	24,317	26.81	1,031
Costa Blanca	15,198	10,261	58,286	225,340	11.14	34	7,561	68.35	338
Costa Barcelona	42,269	15,870	105,281	84,929	3.27	25	9,564	45.95	308
Costa de Castellón	18,958	8,236	76,626	87,585	6.04	31	6,019	49.94	285
pn Aiguamolls de l'Empordà	8,256	12,359	43,850	72,508	5.64	11	4,565	35.37	219
Pirineus	37,027	1,078	94,761	2,177	2.54	69	9,975	38.87	282
Costa Valencia	20,633	3,741	60,053	30,772	3.73	18	4,336	52.04	181
Costa del Sol	9,360	4,331	41,668	48,707	6.60	15	3,623	44.04	159
Costa Cálida	4,585	3,227	21,874	45,508	8.63	10	3,938	34.27	150
Terres de l'Ebre	12,653	3,400	50,523	14,559	4.05	11	2,197	44.21	100
Pirineo Aragonés	17,163	3,144	43,982	7,384	2.53	44	5,817	25.79	209
Costa de la Luz (Cádiz)	11,669	4,334	33,461	16,758	3.14	21	5,731	17.61	196
pn Delta de l'Ebre	6,871	2,156	36,597	5,545	4.67	5	1,190	51.37	61
Costa de la Luz (Huelva)	4,712	3,918	21,170	14,388	4.12	6	4,079	19.83	100

7. Travellers, overnight stays, average stay, open establishments, capacity, occupancy and number of staff from tourist sites with the greatest number at overnights stays

Tourist sites	Travellers		Overnight stays		Average stay	Estimated open establishments	Estimated pitches	Occupancy rate per pitch	Employed personnel
	Residents in Spain	Residents abroad	Residents in Spain	Residents abroad					
Benidorm	3,544	3,785	13,427	139,778	20.90	9	3,884	79.61	131
Mont-Roig Del Camp	10,942	4,519	46,478	44,107	5.86	6	4,237	28.70	115
Salou	7,341	7,627	48,346	26,260	4.98	3	1,722	45.92	82
Cambrils	12,833	2,907	53,175	13,108	4.21	6	3,253	44.04	78
Vilanova I La Geltrú	11,204	5,994	26,572	39,369	3.83	3	2,644	46.27	95
Tarragona	12,239	2,372	43,339	16,710	4.11	4	2,579	45.48	120
Blanes	13,235	1,762	39,127	7,939	3.14	10	3,407	38.03	182
Peníscola/Peñíscola	5,748	3,230	21,006	25,944	5.23	8	1,329	58.35	56
Oliva	5,387	2,007	20,161	24,170	6.00	6	1,423	47.27	108
Marbella	4,182	1,154	23,467	19,889	8.13	3	1,313	45.78	70
Castelló D'Empúries	3,199	2,752	17,124	24,029	6.92	3	1,676	34.80	68
Cartagena	2,355	1,116	13,429	27,118	11.68	3	2,537	26.75	91

8. Travellers and overnight stays by countries of residence

Countries	Travellers		Overnight stays	
	Total	%	Total	%
TOTAL	733,767	100.00	2,839,953	100.00
Residents in Spain	542,825	73.98	1,734,803	61.09
Residents abroad	190,942	26.02	1,105,150	38.91
TOTAL residents abroad	190,942	100.00	1,105,150	100.00
TOTAL residents in E.U. (excluding Spain)	177,622	93.02	1,056,003	95.55
- Germany	35,296	18.48	222,153	20.10
- Austria	1,642	0.86	7,486	0.68
- Belgium	7,552	3.96	53,205	4.81
- Denmark	1,531	0.80	8,992	0.81
- Finland	572	0.30	4,889	0.44
- France	55,147	28.88	221,585	20.05
- Greece	31	0.02	245	0.02
- Ireland	2,230	1.17	13,388	1.21
- Italy	3,211	1.68	8,881	0.80
- Luxembourg	335	0.18	1,941	0.18
- Netherlands	34,534	18.09	204,430	18.50
- Poland	1,070	0.56	3,089	0.28
- Portugal	2,718	1.42	6,632	0.60
- United Kingdom	28,085	14.71	280,774	25.41
- Czech Republic	229	0.12	868	0.08
- Sweden	1,627	0.85	12,130	1.10
- Other EU countries	1,813	0.95	5,317	0.48
Norway	478	0.25	5,800	0.52
Russia	38	0.02	230	0.02
Switzerland	7,429	3.89	27,893	2.52
Other European countries	1,834	0.96	4,826	0.44
United States of America	656	0.34	1,635	0.15
Rest of America	1,166	0.61	2,546	0.23
African countries	104	0.05	214	0.02
Other countries	1,615	0.85	6,004	0.54

* Non-significant data

**Tourist accommodation occupancy survey
(Rural tourist accommodation)**

April 2017

Provisional data

1. Number of travellers, overnight stays and average stay by Autonomous City and Community

Autonomous Communities	Number of travellers			Number of overnight stays			Average stay
	Total	Residents In Spain	Residents abroad	Total	Residents In Spain	Residents abroad	
TOTAL	415,065	347,742	67,323	1,095,034	862,101	232,932	2.64
Andalucía	32,757	20,481	12,276	111,615	51,722	59,893	3.41
Aragón	21,484	19,991	1,493	61,329	57,319	4,010	2.85
Asturias, Principado de	30,399	28,454	1,946	84,715	79,776	4,939	2.79
Balears, Illes	22,885	3,712	19,174	83,028	8,583	74,446	3.63
Canarias	7,265	2,464	4,801	36,174	7,097	29,077	4.98
Cantabria	26,271	24,734	1,537	61,645	58,296	3,349	2.35
Castilla y León	83,006	77,908	5,098	194,622	187,098	7,524	2.34
Castilla-La Mancha	30,032	28,776	1,256	72,274	69,917	2,356	2.41
Cataluña	39,679	35,304	4,375	102,804	89,816	12,987	2.59
Comunitat Valenciana	20,890	19,356	1,534	52,905	46,798	6,107	2.53
Extremadura	25,233	22,229	3,004	59,390	51,284	8,106	2.35
Galicia	20,240	15,872	4,368	38,702	31,491	7,210	1.91
Madrid, Comunidad de	12,432	11,155	1,277	25,486	22,806	2,681	2.05
Murcia, Región de	5,176	4,699	477	12,943	11,310	1,634	2.50
Navarra, Comunidad Foral de	17,111	14,984	2,127	46,110	42,960	3,150	2.69
País Vasco	15,916	13,582	2,334	39,868	34,994	4,874	2.50
Rioja, La	4,289	4,040	249	11,425	10,835	590	2.66
Ceuta	-	-	-	-	-	-	-
Melilla	-	-	-	-	-	-	-
Annual rate	55.93	62.85	27.88	83.21	107.64	27.63	17.49
Cumulative annual rate	12.67	12.65	12.78	11.44	11.51	11.22	-1.09

2. Open rural establishments, bed-places, occupancy rates and employed personnel by Autonomous City and Community

Autonomous Communities	Estimated open rural establishments	Estimated bed-places	Occupancy rate			Employed personnel
			Of bed-places	Of bed-places at weekend	Of bedrooms	
TOTAL	16,716	159,832	22.71	40.26	27.16	24,300
Andalucía	2,067	17,071	21.71	32.05	28.22	2,852
Aragón	1,207	9,564	21.21	39.92	23.22	1,383
Asturias, Principado de	1,387	13,237	21.28	36.91	24.41	1,870
Balears, Illes	333	6,472	42.58	45.15	47.33	2,135
Canarias	551	3,482	34.45	37.59	48.31	826
Cantabria	417	6,992	29.08	52.72	36.24	792
Castilla y León	3,498	30,641	21.08	43.31	24.72	4,705
Castilla-La Mancha	1,638	14,540	16.50	38.57	20.06	2,043
Cataluña	2,052	17,884	19.09	38.69	22.95	2,592
Comunitat Valenciana	889	10,183	17.24	30.78	22.17	1,178
Extremadura	616	7,459	26.42	44.35	33.71	906
Galicia	496	6,291	20.37	35.84	22.80	841
Madrid, Comunidad de	250	3,723	22.71	43.58	30.37	486
Murcia, Región de	162	2,288	18.82	35.84	23.13	262
Navarra, Comunidad Foral de	657	4,740	31.97	54.57	34.95	863
País Vasco	370	4,073	32.19	50.11	35.31	427
Rioja, La	126	1,192	31.30	58.39	31.04	141
Ceuta	-	-	-	-	-	-
Melilla	-	-	-	-	-	-
Annual rate	5.00	5.10	73.86	60.51	68.80	5.38
Cumulative annual rate	3.27	3.42	9.06	8.24	8.08	1.10

3. Number of travellers, overnight stays and average stay in Provinces with the greatest number of overnight stays¹

Provinces	Number of travellers			Number of overnight stays			Average stay
	Total	Residents In Spain	Residents abroad	Total	Residents In Spain	Residents abroad	
Málaga	11,613	5,014	6,599	56,645	14,539	42,106	4.88
Cáceres	21,338	18,938	2,400	50,998	44,102	6,896	2.39
Girona	17,101	14,530	2,571	41,534	34,402	7,133	2.43
Ávila	13,356	13,069	287	34,743	33,914	829	2.60
Huesca	10,943	10,152	791	34,076	31,812	2,264	3.11
Segovia	12,869	12,608	260	28,948	28,584	364	2.25
Barcelona	9,728	9,042	686	28,104	25,480	2,624	2.89
Santa Cruz de Tenerife	5,461	1,854	3,607	27,863	5,584	22,280	5.10
Soria	9,120	8,888	232	25,821	25,188	634	2.83
Burgos	10,689	9,602	1,087	25,115	23,942	1,173	2.35
León	11,217	9,372	1,845	24,400	22,263	2,137	2.18
Valencia/València	8,637	8,079	558	22,180	20,120	2,061	2.57
Gipuzkoa	8,126	7,076	1,050	22,119	19,627	2,492	2.72
Salamanca	9,754	9,311	443	20,908	20,257	650	2.14
Albacete	7,833	7,826	6	20,154	20,146	8	2.57

4. Open rural establishments, bed-places, occupancy rates and employed personnel in Provinces with the highest number of overnight stays¹

Provinces	Estimated open rural establishments	Estimated bed-places	Occupancy rate			Employed personnel
			Of bed-places	Of bed-places at weekend	Of bedrooms	
Málaga	1,054	6,918	27.16	35.55	36.89	1,336
Cáceres	498	6,081	27.82	46.39	35.62	719
Girona	707	6,696	20.63	43.19	25.01	775
Ávila	757	5,983	19.28	41.00	23.17	953
Huesca	658	4,997	22.56	41.61	24.30	750
Segovia	437	3,898	24.62	54.75	26.79	604
Barcelona	536	4,682	19.94	42.27	24.53	813
Santa Cruz de Tenerife	448	2,647	34.87	37.64	49.65	634
Soria	347	3,134	27.23	54.02	31.29	409
Burgos	401	3,928	21.28	44.46	26.58	485
León	462	3,768	21.51	35.93	24.98	703
Valencia/València	240	3,852	19.14	32.84	24.09	339
Gipuzkoa	170	1,958	37.07	55.91	41.03	208
Salamanca	484	3,965	17.48	39.13	19.41	610
Albacete	656	4,318	15.49	35.82	17.43	813

¹ Provinces belonging to uniprovincial Autonomous Communities have not been included because they are reflected in previous tables.

5. Number of travellers, overnight stays, average stay, capacity and occupancy rates in areas with the highest number of overnight stays

Areas	Number of travellers		Number of overnight stays		Average stay	Capacity		Occupancy rate		
	Residents In Spain	Residents abroad	Residents In Spain	Residents abroad		Estimated open rural establishments	Estimated bed-places	Of bed-places	Of bed-places at weekend	Of bedrooms
Isla de Mallorca	2,534	17,193	5,777	67,719	3.73	298	5,669	43.03	45.04	47.74
Extremadura Norte	14,488	1,330	34,914	4,158	2.47	339	4,240	30.53	47.69	40.07
Pirineo Navarro	12,518	1,892	36,879	2,169	2.71	577	4,078	31.42	51.20	33.62
Pirineus	12,907	287	36,069	794	2.79	790	6,509	18.80	38.86	22.55
Pirineo Aragonés	9,423	834	29,995	2,246	3.14	607	4,570	23.32	42.01	25.20
Costa Verde	10,226	509	28,651	1,587	2.82	462	4,922	20.43	36.07	23.27
Costa Brava	8,685	2,432	19,958	6,782	2.41	423	4,084	21.80	44.53	26.04
P.Nacional Picos de Europa	8,505	456	24,960	1,136	2.91	272	2,659	32.59	52.51	34.25
P.Natural Sierras de Tejada, Almirajara y Alhama	993	3,693	2,296	17,058	4.13	323	2,014	32.04	32.08	42.77
Isla de Tenerife	1,259	2,188	2,705	11,916	4.24	114	1,230	39.22	42.98	49.33
Costa del Sol	294	1,472	1,657	10,712	7.00	169	1,160	35.56	43.56	43.75
P.Natural de Corona Forestal	1,097	1,722	2,211	9,372	4.11	87	960	39.86	45.21	49.82
Pirineo Vasco	3,872	453	10,238	1,307	2.67	114	1,261	29.95	46.39	33.21
P.Nacional Teide	996	1,558	2,073	7,774	3.86	79	890	36.64	38.51	47.70
Isla de La Palma	283	874	1,461	7,614	7.84	222	836	36.09	38.38	56.74

6. Number of travellers, overnight stays, average stay, capacity, occupancy rates and employed personnel per rural house by Autonomous City and Community²

Autonomous Communities	Number of travellers		Number of overnight stays		Average stay	Capacity		Occupancy rate		Employed personnel
	Residents In Spain	Residents abroad	Residents In Spain	Residents abroad		Estimated open rural establish.	Estimated bed-places	Of bed-places	Of bed-places at weekends	
TOTAL	233,739	37,093	605,873	137,206	2.74	14,276	117,410	20.98	39.08	18,177
Andalucía	20,471	12,251	51,630	59,762	3.40	2,066	17,055	21.69	32.05	2,849
Aragón	15,952	1,292	44,217	3,499	2.77	952	7,468	21.13	40.44	1,105
Asturias, Principado de	10,911	291	31,646	573	2.88	883	5,402	19.84	35.05	1,083
Balears, Illes	1,927	5,053	3,858	14,890	2.69	98	1,428	43.72	47.49	380
Canarias	979	2,561	4,082	19,187	6.57	522	2,654	29.10	31.97	643
Cantabria	6,287	385	17,741	1,387	2.87	185	2,562	24.84	45.15	261
Castilla y León	48,145	738	130,296	1,620	2.70	3,078	22,207	19.72	41.40	3,628
Castilla-La Mancha	27,547	1,235	67,264	2,286	2.42	1,609	13,853	16.66	39.26	2,001
Cataluña	35,304	4,375	89,816	12,987	2.59	2,052	17,884	19.09	38.69	2,592
Comunitat Valenciana	13,279	1,278	33,166	4,950	2.62	846	7,590	16.64	31.57	1,013
Extremadura	10,282	1,248	22,131	3,232	2.20	378	3,691	22.82	45.08	491
Galicia	10,484	2,187	22,255	4,316	2.10	362	4,341	20.24	37.38	547
Madrid, Comunidad de	2,555	281	6,832	790	2.69	97	1,090	23.22	44.23	117
Murcia, Región de	3,313	261	9,179	1,201	2.90	148	1,929	17.90	37.22	220
Navarra, Comunidad Foral de	14,984	2,127	42,960	3,150	2.69	657	4,740	31.97	54.57	863
País Vasco	7,279	1,282	17,967	2,787	2.42	216	2,325	29.29	47.23	243
Rioja, La	4,040	249	10,835	590	2.66	126	1,192	31.30	58.39	141
Ceuta	-	-	-	-	-	-	-	-	-	-
Melilla	-	-	-	-	-	-	-	-	-	-

² To facilitate the comparability between data from different Autonomous Communities (and because of the different regulation and different characteristics), a group called rural house has been created, with those establishments with similar typology (location, capacity, etc...). The variables included in the previous table have been estimated with that type of establishments.

7. Travellers and overnight stays by country of residence

Results by countries	Travellers		Overnight stays	
	Total	%	Total	%
TOTAL	415,065	100.00	1,095,034	100.00
Residents Spain	347,742	83.78	862,101	78.73
Residents abroad	67,323	16.22	232,932	21.27
Total Residents abroad	67,323	100.00	232,932	100.00
Total Residents in EU (excluding Spain)	48,688	72.32	186,452	80.05
- Germany	15,855	23.55	72,976	31.33
- Belgium	2,032	3.02	7,058	3.03
- France	8,666	12.87	23,451	10.07
- Italy	1,553	2.31	3,741	1.61
- Netherlands	5,678	8.43	25,152	10.80
- Portugal	1,522	2.26	3,717	1.60
- United Kingdom	9,453	14.04	33,148	14.23
Switzerland	2,906	4.32	10,748	4.61
Other European countries	5,853	8.69	21,855	9.38
United States of America	3,379	5.02	6,470	2.78
Other countries	10,425	15.49	24,616	10.57

Tourist Accommodation Occupancy Survey Hostels Occupancy Survey (HOS)

April 2017

Provisional data

1. Travellers, overnight stays and average stay by Autonomous Cities and Communities

Autonomous cities and communities	Travellers			Overnight stays			Average stay
	Total	Residents in Spain	Residents abroad	Total	Residents in Spain	Residents abroad	
TOTAL	104,782	75,620	29,163	241,817	167,539	74,278	2.31
Andalucía	8,181	6,877	1,304	18,339	15,322	3,017	2.24
Aragón	4,674	4,559	115	10,640	10,453	187	2.28
Asturias, Principado de	484	442	42	2,289	2,040	249	4.73
Balears, Illes	-	-	-	-	-	-	-
Canarias	-	-	-	-	-	-	-
Cantabria	1,810	1,752	58	4,067	3,999	68	2.25
Castilla y León	7,395	6,657	738	17,869	16,631	1,238	2.42
Castilla - La Mancha	5,525	5,257	268	13,360	12,906	454	2.42
Cataluña	42,741	25,041	17,700	100,398	52,056	48,342	2.35
Comunitat Valenciana	10,922	6,896	4,026	27,584	16,734	10,850	2.53
Extremadura	1,775	1,653	122	3,802	3,504	298	2.14
Galicia	-	-	-	-	-	-	-
Madrid, Comunidad de	3,335	2,967	367	6,462	5,952	510	1.94
Murcia, Región de	-	-	-	-	-	-	-
Navarra, Comunidad Foral de	3,560	1,957	1,603	9,131	6,024	3,107	2.56
País Vasco	10,929	8,502	2,427	21,415	16,258	5,157	1.96
Rioja, La	667	562	105	1,384	1,243	141	2.07
Ceuta	-	-	-	-	-	-	-
Melilla	-	-	-	-	-	-	-
Annual rate	16.12	18.53	10.31	27.89	37.70	10.18	10.14
Cumulative annual rate	-0.41	-1.65	2.81	5.34	4.46	7.17	5.77

2. Open establishments, capacity, occupancy and number of staff by autonomous cities and communities

Autonomous cities and communities	Capacity		Occupancy rate		Employed personnel
	Estimated open establishments	Estimated bed-places	Of bed-places	Of bed-places at weekend	
TOTAL	213	25,279	31.89	39.59	1,695
Andalucía	15	3,351	18.24	16.43	220
Aragón	22	1,956	18.13	29.70	107
Asturias, Principado de	4	322	23.70	31.87	40
Balears, Illes	-	-	-	-	-
Canarias	-	-	-	-	-
Cantabria	8	450	30.13	39.83	29
Castilla y León	23	2,125	28.03	41.42	168
Castilla - La Mancha	24	2,565	17.36	26.23	94
Cataluña	43	6,696	49.98	60.98	404
Comunitat Valenciana	13	2,133	43.10	54.52	102
Extremadura	9	748	16.94	29.41	51
Galicia	-	-	-	-	-
Madrid, Comunidad de	6	528	40.82	42.98	169
Murcia, Región de	-	-	-	-	-
Navarra, Comunidad Foral de	12	945	32.22	30.24	68
País Vasco	20	2,376	30.04	32.17	166
Rioja, La	5	225	20.49	34.45	9
Ceuta	-	-	-	-	-
Melilla	-	-	-	-	-
Annual rate	3.04	1.88	25.53	24.03	3.37
Cumulative annual rate	-2.24	-2.34	8.19	3.27	-1.76

3. Travellers and overnight stays by countries of residence

Countries	Travellers		Overnight stays		Average stay
	Total	%	Total	%	
TOTAL	104,782	100.00	241,817	100.00	2.31
Residents in Spain	75,620	72.17	167,539	69.28	2.22
Residents abroad	29,163	27.83	74,278	30.72	2.55
TOTAL residents abroad	29,163	100.00	74,278	100.00	2.55
TOTAL residents in E.U. (excluding Spain)	19,790	67.86	49,427	66.54	2.50
- Germany	2,585	8.86	6,155	8.29	2.38
- Belgium	957	3.28	2,852	3.84	2.98
- France	6,350	21.77	14,599	19.65	2.30
- Italy	2,580	8.85	6,884	9.27	2.67
- Netherlands	761	2.61	2,257	3.04	2.97
- Portugal	865	2.97	1,667	2.24	1.93
- United Kingdom	2,369	8.12	5,975	8.04	2.52
Switzerland	330	1.13	881	1.19	2.67
Other European countries	4,742	16.26	12,402	16.70	2.62
United States of America	1,599	5.48	4,212	5.67	2.63
Other countries	6,025	20.66	16,396	22.07	2.72

HOLIDAY DWELLING PRICE INDEX (HDPI)

April 2017

Provisional data

National general index and breakdown by rates

	Index	Annual variation rate
TOTAL	127.51	7.87
Normal	124.61	7.65
Weekend	123.07	3.03
Tour-operators and travel agencies	132.20	8.75

National general index and breakdown by modalities

	Index	Annual variation rate
TOTAL	127.51	7.87
Studio	125.99	4.46
Dwellings 2/4 bedplaces	127.20	9.27
Dwellings 4/6 bedplaces	133.31	5.78

Tourist Campsite Price Index (TCSPI). 2002 Base

April 2017

Provisional data

National general index and breakdown by rates

	Index	Annual variation rate
TOTAL	136.81	2.94
Normal rate	138.63	5.50
Special rate for stays up to one month	141.64	5.04
Special rate for stays longer than one month	144.08	2.45
Bungalow rate*	94.95	1.07

National general index and breakdown by categories

	Index	Annual variation rate
TOTAL	136.81	2.94
Luxury and first	121.32	0.95
Second	147.99	4.84
Third	152.63	4.73

*2014 Base

TCSPI (ANNEX OF TABLES) - APRIL 2017

31st may 2017

Rural Tourism Accommodation Price Index (RTAPI)

April 2017

Provisional data

General Autonomous Cities and Communities and national indices

	Index	Annual variation rate
TOTAL	131.96	2.85
Andalucía	136.75	1.52
Aragón	156.63	6.60
Asturias, Principado de	142.05	11.84
Balears, Illes	106.50	1.34
Canarias	119.78	5.93
Cantabria	163.45	10.05
Castilla y León	134.88	1.66
Castilla - La Mancha	133.73	2.96
Cataluña	148.01	6.80
Comunitat Valenciana	134.40	10.99
Extremadura	105.47	-6.11
Galicia	133.86	1.78
Madrid, Comunidad de	126.77	-2.15
Murcia, Región de	143.78	-3.80
Navarra, Comunidad Foral de	187.01	3.65
País Vasco	150.81	7.47
Rioja, La	137.83	4.07
Ceuta	-	-
Melilla	-	-

National general index and breakdown by rates

	Index	Annual variation rate
TOTAL	131.96	2.85
Normal	127.58	3.08
Weekend	138.15	2.75

National general index and breakdown by rent modality

	Index	Annual variation rate
TOTAL	131.96	2.85
Shared use (in case of per room rent modality)	120.42	3.43
Full use (rent of entire dwelling)	140.19	2.52