

31 July 2012

Non-Hotel Tourist Accommodation Occupancy Survey
June 2012. *Provisional data*

**Overnight stays in non-hotel tourist accommodation decrease 1.7%
in June, as compared with the same month of 2011**

Overnight stays in non-hotel tourist accommodation (holiday dwellings, campsites and rural tourism establishments) exceeded 9.3 million in June, 1.7% less than in the same month of 2011. Overnight stays by resident travellers decreased 6.1%, whilst by non-residents increased 1.4%. The average stay decreased 2.5%, standing at 5.0 overnights per traveller.

During first six months of the year, overnight stays decreased 1.2%, as compared with the same period the previous year.

Travellers and overnight stays in collective non-hotel tourist accommodation during the month of June were:

June 2012	Travellers	Overnight stays
Residents in Spain	1,054,783	3,586,954
EU (not including Spain)	717,046	5,146,485
Rest of the world	106,422	600,898
TOTAL	1,878,251	9,334,337

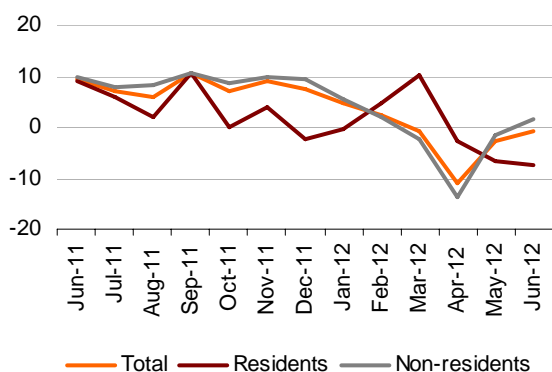
Holiday Dwellings

Overnight stays in holiday dwellings decreased 1.0% in June. Overnight stays of residents decreased 7.5%, whilst of non-residents increased 1.5%

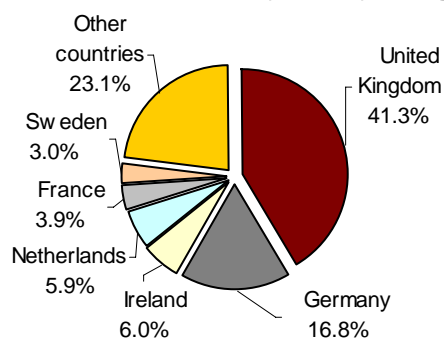
The average stay decreased 5.4%, standing at 6.1 overnights stays per traveller.

In June, 36.7% of the total available bedplaces for holiday dwellings were occupied, 0.4% more than in June 2011. The weekend occupancy rate by bedplaces stood at 38.9%, with a decrease of 1.4%.

**Interannual rates of overnight stays in %
in holiday dwellings**



Overnight stays in holiday dwellings of non-resident travellers by country of origin in %



Non-resident overnight stays in holiday dwellings represented 74.7% of the total. The United Kingdom was the main country of origin, with 1,8 million overnight stays, 4.7% less than in June last year. The following country of origin was Germany, with 727,407 overnight stays, 0.1% more.

Canarias was the preferred holiday dwelling destination, with a decrease of 1.4% and Illes Balears, with 1.3% more. Illes Balears presented the highest occupancy rate with 71.1% of the dwellings offered.

By tourist area, the island of Mallorca was the preferred destination in holiday dwellings, with 981,223 overnight stays, and an occupancy of 77.6% of the dwellings offered.

The tourist sites with the greatest number of overnight stays were San Bartolomé de Tirajana, Arona and Tías.

Tourist Campsites



The overnight stays in tourist campsites registered an interannual decrease of 1.3%, in June. Overnight stays by resident travellers decreased 1.7%, and non-resident travellers 0.7%.

31.9% of the offered lots were occupied, 2.0% less. The weekend occupancy rate by lot reached 35.0%, with an interannual decrease of 5.8%.

41.7% of the overnight stays on tourist campsites were by non-residents. Netherlands was the main country of origin, with 25.0% of the overnight stays by non-residents, 2.0% less than in June 2011.

Cataluña was the preferred destination for camping, with 1,6 million overnight stays, 0.7% more. La Rioja reached the highest occupancy rate on campsites, with 61.1% of the lots offered.

By tourist area, Costa Brava was the preferred destination for camping, with 775,223 overnight stays. Costa Blanca reached the highest occupancy rate, with 46.7% of the lots offered.

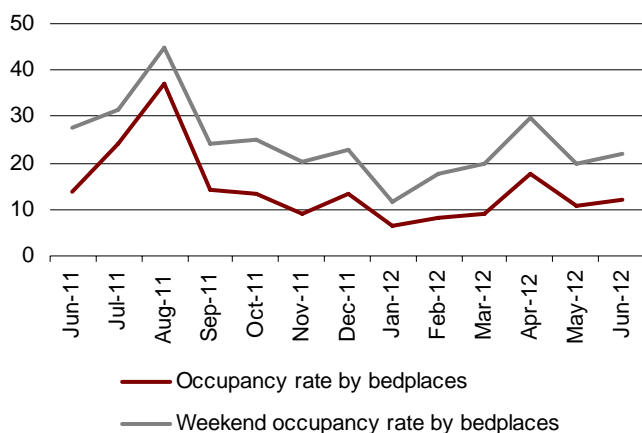
The tourist sites with the most overnight stays were Salou, Torroella de Montgrí and Benidorm.

Rural Tourism Accommodation

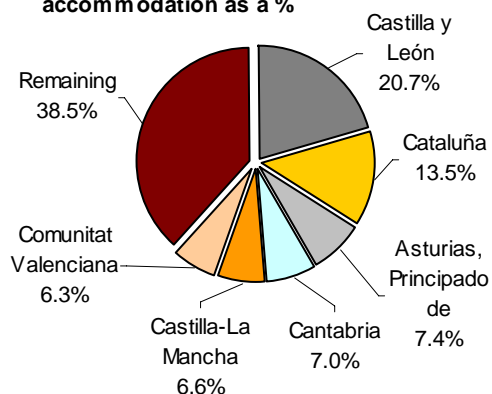
Overnight stays in rural tourism accommodation presented an interannual decrease of 10.3%, in June. Resident overnight stays dropped 18.5%, whereas those of non-residents growth 16.3%.

12.1% of the bedplaces in rural tourism accommodation were occupied, representing a 13.3% decrease. The weekend occupancy rate stood at 22.0%, with a decrease of 19.9%.

Evolution of occupancy rates by bedplaces and by bedplaces on weekends in rural tourism accommodation



Distribution of overnight stays of travellers resident in Spain in rural tourism accommodation as a %



Illes Balears was the preferred destination in rural tourism accommodation, with 91,344 overnight stays, 18.5% more than in June 2011. This Autonomous Community reached the highest occupancy rate, with 56.7% of the offered bedplaces.

By tourist area, the island of Mallorca was the main destination, with 73,296 overnight stays. The island of Menorca reached the greatest occupancy (56.5% of the offered bedplaces).

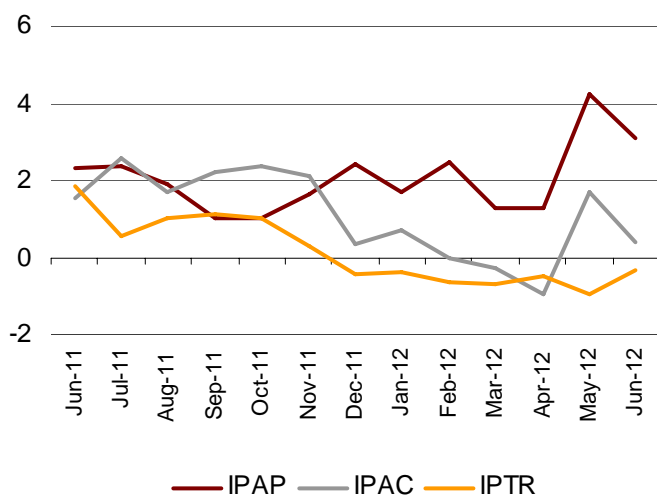
Price Index Evolution

The Holiday Dwelling Price Index registered an increase of 3.1% in June, rate 1.1 points lower than registered the previous month. The *Tour-operators and travel agencies* rate, which carried the greatest weight in the weighting structure for this month (50.2%), registered an increase of 4.4%.

The Tourist Campsite Price Index registered an increase of 0.4%, as compared with June 2011. The *normal* rate, which had the greatest weight in the weighting structure for this month (68.3%), decreased 0.1%.

The Rural Tourism Accommodation Price Index experienced an interannual decrease of 0.3% in June. The *weekend* rate, which accounted for 62.7% of the total weight, decreased 0.9%.

Price Indexes. Interannual variation rates



Evolution of travellers and overnight stays in all Spanish collective tourist accommodation

Overnight stays in Spanish collective tourist accommodation (hotels, holiday dwellings, campsites and rural tourism accommodation) registered a decreased of 1.4% as compared with the same month last year.

Overnight stays by residents decreased 8.2%, whereas non-resident stays increased 2.4%. The average stay increased 0.4%, standing at 3.8 nights per traveller.

Travellers and overnight stays in collective tourist accommodation were:

June 2012	Hotels	Holiday dwellings	Campsites	Rural T.	Total
Travellers	8,604,286	960,514	693,863	223,875	10,482,538
Residents	4,162,012	362,919	509,171	182,693	5,216,795
Non-residents	4,442,273	597,594	184,692	41,182	5,265,741
Overnight stays	30,312,776	5,810,169	2,987,873	536,296	39,647,114
Residents	9,661,004	1,470,644	1,742,948	373,362	13,247,958
Non-residents	20,651,772	4,339,525	1,244,925	162,933	26,399,155

Of the total overnight stays in collective tourist accommodation in the month of June, 76% were accounted for at hotels, and 24% were at non-hotel tourist accommodation.

The main countries of origin in overall regulated tourist accommodation were United Kingdom (with 29.5% of the total number of non-resident overnight stays), Germany (24.4%) and France (5.3%).

Illes Balears was the preferred destination regarding overall tourist accommodation, with more than 10.2 million overnight stays (1.7% more than in June 2011). It was followed by Cataluña, with more than 7.8 million overnight stays (3.6% less) and Canarias, with more than 6.1 million overnight stays (1.2% more).

Tourist Accommodation Occupancy Survey (Holiday Dwellings)

June 2012

Provisional data

1. Travellers, overnight stays and average stay by Autonomous Cities and Communities

Autonomous Communities	Number of travellers			Number of overnight stays			Average stay
	Total	Residents in Spain	Residents abroad	Total	Residents in Spain	Residents abroad	
TOTAL	960,514	362,919	597,594	5,810,169	1,470,644	4,339,525	6.05
Andalucía	153,296	79,700	73,597	662,774	244,991	417,783	4.32
Aragón	7,301	6,303	998	20,421	17,054	3,368	2.80
Asturias, Principado de	3,239	2,983	255	9,791	9,087	704	3.02
Balears, Illes	231,631	29,774	201,857	1,595,723	138,504	1,457,219	6.89
Canarias	251,427	77,647	173,780	1,797,766	280,187	1,517,579	7.15
Cantabria	7,203	6,311	892	20,065	17,332	2,732	2.79
Castilla y León	5,281	5,062	218	13,853	13,063	790	2.62
Castilla-La Mancha	5,017	4,724	293	13,419	12,403	1,016	2.67
Cataluña	118,944	46,214	72,731	633,310	219,265	414,046	5.32
Comunitat Valenciana	118,368	62,867	55,501	798,472	353,537	444,935	6.75
Extremadura	3,000	2,870	130	7,003	6,731	272	2.33
Galicia	7,577	6,102	1,475	21,307	16,952	4,355	2.81
Madrid, Comunidad de	30,711	18,035	12,676	116,050	60,919	55,131	3.78
Murcia, Región de	9,493	7,669	1,824	72,846	61,124	11,721	7.67
Navarra, Comunidad Foral de	3,202	2,496	706	10,151	6,998	3,152	3.17
País Vasco	3,064	2,511	553	13,544	9,228	4,316	4.42
Rioja, La	1,759	1,651	108	3,674	3,267	407	2.09
Ceuta	-	-	-	-	-	-	-
Melilla	-	-	-	-	-	-	-
Interannual rate	4.65	5.81	3.96	-0.96	-7.46	1.45	-5.36
Cumulative interannual rate	-0.35	0.06	-0.55	-1.57	-2.54	-1.33	-1.22

2. Capacity, occupancy and number of staff by Autonomous Cities and Communities

Autonomous Communities	Capacity		Level of occupancy				Employed personnel
	Estimated bedplaces	Estimated Holiday dwelling	Per bedplaces	Per bedplaces at weekenc	Per Holiday dwelling	Per Holiday dwelling at weekenc	
TOTAL	524,560	141,410	36.72	38.9	51.70	54.13	26,104
Andalucía	61,090	15,665	36.04	41.26	51.84	58.96	3,337
Aragón	5,606	1,314	12.11	19.40	19.34	25.78	414
Asturias, Principado de	3,962	969	8.22	11.82	12.75	16.87	276
Balears, Illes	91,493	28,803	57.37	57.62	71.10	71.22	6,163
Canarias	162,960	50,262	36.64	38.06	50.50	52.14	9,277
Cantabria	4,320	1,206	15.45	22.87	25.03	35.16	266
Castilla y León	3,389	745	13.61	24.55	22.18	32.43	271
Castilla-La Mancha	4,884	1,162	9.16	16.92	14.42	23.81	352
Cataluña	71,659	15,465	29.45	31.64	42.75	45.17	1,931
Comunitat Valenciana	89,275	18,265	29.78	31.43	42.99	45.06	2,141
Extremadura	1,378	368	16.83	26.84	23.69	36.05	144
Galicia	3,783	1,030	18.36	22.48	28.63	32.40	229
Madrid, Comunidad de	7,227	3,085	53.24	56.82	69.87	72.27	558
Murcia, Región de	9,448	2,074	25.68	27.56	35.18	37.51	206
Navarra, Comunidad Foral de	1,742	402	19.41	25.82	33.14	36.51	395
País Vasco	1,460	397	30.87	36.17	53.37	58.22	85
Rioja, La	884	198	13.84	31.34	16.91	38.07	59
Ceuta	-	-	-	-	-	-	-
Melilla	-	-	-	-	-	-	-
Interannual rate	-1.13	-1.02	0.44	-1.42	-0.34	-2.01	-1.75
Cumulative interannual rate	-0.05	-0.63	-1.93	-2.65	-0.81	-1.67	-1.82

3. Travellers, overnight stays, capacity, occupancy, total number of staff with greater number of overnight stays *

Provinces	Number of travellers		Overnight stays		Average stay	Capacity		Level of occupancy			Employed personnel
	Residents in Spain	Residents abroad	Residents in Spain	Residents abroad		Estimated bed-places	Estimated holiday dwelling	Per bed-places	Per Holiday dwelling	Per Holiday dwelling at week	
Palmas, Las	48,531	109,204	175,963	966,450	7.24	107,308	33,215	35.33	48.87	50.38	5,701
Santa Cruz de Tenerife	29,116	64,576	104,224	551,128	6.99	55,652	17,046	39.16	53.66	55.55	3,577
Alicante\Alacant	34,657	42,633	166,679	359,995	6.81	57,782	12,007	30.36	44.95	47.03	1,498
Málaga	23,983	51,024	92,047	347,457	5.86	32,227	8,211	45.45	65.38	68.36	1,762
Tarragona	23,599	31,178	88,347	169,606	4.71	25,722	5,069	33.43	44.09	46.26	606
Girona	14,055	25,206	58,790	173,479	5.92	35,310	7,486	21.92	33.18	34.72	786
Castellón\Castelló	13,533	5,019	95,229	44,215	7.52	18,475	3,549	25.15	34.65	36.24	298
Barcelona	6,465	16,284	67,521	70,689	6.08	8,681	2,528	53.00	72.83	77.82	453
Valencia\València	14,677	7,849	91,629	40,725	5.88	13,018	2,709	33.78	45.26	47.91	344
Almería	20,219	2,021	57,662	14,011	3.22	9,082	2,139	26.27	43.90	64.24	233
Cádiz	8,828	12,035	25,366	32,593	2.78	4,563	1,267	41.50	47.84	52.65	541
Sevilla	5,535	4,865	17,943	14,133	3.08	3,488	1,162	30.39	44.92	50.46	182
Huelva	10,505	326	27,162	1,540	2.65	4,296	993	22.27	31.06	47.07	93
Granada	7,248	2,492	17,544	6,791	2.50	4,378	1,159	18.44	24.81	36.15	357
Huesca	2,990	253	7,581	666	2.54	3,102	665	8.83	12.18	19.50	237

4. Travellers, overnight stays, capacity, occupancy, total number of staff from tourist areas with greater number of overnight stays

Tourist Areas	Number of travellers		Overnight stays		Average stay	Capacity		Level of occupancy			Employed personnel
	Residents in Spain	Residents abroad	Residents in Spain	Residents abroad		Estimated bed-places	Estimated holiday dwelling	Per bed-places	Per Holiday dwelling	Per Holiday dwelling at week	
Isla de Mallorca	4,147	131,353	15,275	965,948	7.24	51,305	16,345	62.64	77.63	77.50	3,649
Isla de Tenerife	24,607	62,843	87,769	530,835	7.07	49,094	14,814	41.90	57.41	59.34	3,089
Isla de Lanzarote	12,048	55,074	63,163	466,219	7.89	42,232	12,352	41.49	58.36	58.45	2,432
Costa Blanca	33,417	40,802	158,447	347,400	6.82	53,084	11,112	31.74	46.70	48.76	1,413
Isla de Gran Canaria	33,131	38,073	98,603	358,229	6.42	48,978	15,773	31.05	42.05	45.34	2,425
Costa del Sol	22,772	49,634	88,987	334,155	5.84	30,504	7,841	46.16	66.51	69.32	1,691
Islas de Ibiza-Formentera	11,391	43,339	54,785	290,287	6.30	22,179	7,070	51.46	64.90	65.08	1,425
Isla de Menorca	14,235	27,165	68,444	200,985	6.51	18,009	5,387	49.63	59.45	60.21	1,089
Costa Daurada	22,965	30,365	84,687	163,091	4.65	24,662	4,861	33.49	44.42	46.66	577
Costa Brava	13,085	25,119	56,888	173,353	6.03	34,344	7,268	22.34	33.78	35.11	689

5. Travellers, overnight stays, capacity, occupancy, total number of staff from tourist sites with greater number at overnights stays

Tourist sites	Number of travellers		Overnight stays		Average stay	Capacity		Level of occupancy			Employed personnel
	Residents in Spain	Residents abroad	Residents in Spain	Residents abroad		Estimated bed-places	Estimated holiday dwelling	Per bed-places	Per Holiday dwelling	Per Holiday dwelling at week	
San Bartolomé de Tirajana	29,482	27,186	86,158	257,134	6.06	35,461	11,295	32.22	44.68	48.66	1,749
Arona	6,066	29,059	17,013	268,635	8.13	20,737	6,356	45.80	61.00	63.22	1,265
Tías	4,614	26,412	22,799	233,450	8.26	21,334	6,604	39.73	55.50	55.54	1,088
Calvià	1,213	40,851	3,388	242,181	5.84	11,097	3,828	72.88	83.84	85.19	649
Benidorm	9,405	20,993	58,574	165,097	7.36	15,004	3,593	49.66	70.16	72.01	644
Alcúdia	1,445	26,894	6,137	196,006	7.13	8,905	3,116	73.19	81.32	82.38	814
Adeje	5,734	19,853	18,982	164,490	7.17	14,527	4,067	42.09	60.90	62.13	892
Ciudadella de Menorca	9,577	17,623	46,761	125,927	6.35	11,027	3,468	51.86	60.40	60.87	673
Teguise	5,573	17,253	30,761	137,413	7.37	12,430	3,538	44.82	64.63	64.38	744
Salou	17,638	21,986	60,264	89,036	3.77	12,632	2,528	39.40	50.50	54.14	237

* Provinces belonging to uniprovincial Autonomous Communities have not been included because they are reflected in previous tables.

6. Percentage distribution of Spanish travellers by Autonomous City and Community of origin

Origin Destination	Total	Andalucía	Aragón	Asturias, P. de	Balears (Illes)	Canarias	Cantabria	Castilla y León	Castilla-La Mancha	Cataluña
TOTAL	100.00	18.09	2.66	1.66	2.29	13.48	0.71	3.19	3.02	14.29
Andalucía	100.00	61.73	0.40	1.16	0.33	0.72	0.46	1.74	2.94	3.20
Aragón	100.00	2.49	20.42	0.58	0.31	0.35	0.88	2.72	2.63	27.15
Asturias, P. de	100.00	6.21	2.28	17.60	-	-	6.08	10.01	5.99	5.43
Balears, Illes	100.00	6.00	1.72	1.79	19.50	0.93	1.36	1.60	0.92	32.14
Canarias	100.00	9.96	0.23	0.36	1.40	59.50	0.21	0.83	0.18	1.21
Cantabria	100.00	2.97	2.06	4.08	0.56	1.19	3.36	21.64	1.78	3.79
Castilla y León	100.00	2.24	1.07	2.85	0.34	0.08	1.78	16.43	1.30	4.32
Castilla - La Mancha	100.00	1.31	0.66	0.18	-	1.20	-	2.10	11.87	3.21
Cataluña	100.00	1.76	8.54	0.40	1.07	0.26	0.51	1.00	1.00	65.80
Comunitat Valenciana	100.00	2.94	3.30	0.90	0.24	0.13	0.46	5.24	8.00	4.38
Extremadura	100.00	8.47	-	5.03	0.39	1.27	0.78	10.00	5.37	1.99
Galicia	100.00	1.96	0.74	8.58	0.20	2.37	0.53	7.47	1.91	4.88
Madrid, Comunidad de	100.00	13.85	3.14	5.19	2.24	6.40	2.19	6.92	2.78	9.39
Murcia, Región de	100.00	6.72	0.60	10.64	0.00	0.52	0.84	4.88	9.77	2.48
Navarra, C. Foral de	100.00	5.37	4.64	1.11	0.24	1.84	1.04	1.90	1.12	12.06
País Vasco	100.00	2.11	5.29	3.83	-	0.50	1.46	3.88	2.70	12.36
Rioja, La	100.00	0.24	4.12	1.14	-	-	0.38	2.32	-	18.86
Ceuta	-	-	-	-	-	-	-	-	-	-
Melilla	-	-	-	-	-	-	-	-	-	-

(conclusión)

Origin Destination	Comunitat Valenciana	Extrema- dura	Galicia	Madrid, C. de	Murcia, Región de	Navarra, C. Foral de	País Vasco	Rioja, La	Ceuta	Melilla
TOTAL	9.06	1.42	2.37	19.52	2.44	1.07	4.02	0.55	0.08	0.09
Andalucía	3.34	3.78	0.44	11.89	5.15	0.21	1.85	0.20	0.20	0.26
Aragón	7.84	0.66	0.83	20.84	0.88	3.40	7.20	0.83	-	-
Asturias, P. de	2.43	0.27	1.60	22.83	1.14	0.47	14.36	0.70	-	0.27
Balears, Illes	6.06	0.44	1.63	18.88	0.78	0.56	5.38	0.28	0.03	-
Canarias	0.54	0.49	2.01	21.75	0.12	0.30	0.70	0.21	0.01	-
Cantabria	3.48	0.92	4.50	17.17	0.13	5.01	22.62	4.73	-	-
Castilla y León	4.23	0.71	1.73	54.34	-	0.32	7.64	0.63	-	-
Castilla - La Mancha	8.92	0.69	0.18	65.61	3.83	-	0.25	-	-	-
Cataluña	4.61	0.12	1.04	6.74	0.54	2.04	3.60	0.87	0.09	-
Comunitat Valenciana	34.92	0.60	0.76	29.35	3.00	1.56	3.38	0.78	0.02	0.06
Extremadura	1.29	10.50	3.09	37.00	1.56	1.77	6.45	1.82	-	-
Galicia	1.51	0.59	51.63	9.90	1.11	0.84	5.01	0.70	-	0.07
Madrid, Comunidad de	9.21	3.05	6.90	16.40	2.62	1.52	7.05	0.71	0.25	0.18
Murcia, Región de	5.92	1.11	0.80	35.73	18.06	0.40	1.41	0.05	0.03	0.03
Navarra, C. Foral de	5.55	1.76	3.83	7.84	1.91	10.29	38.86	0.64	-	-
País Vasco	2.26	-	3.77	12.68	-	6.04	41.71	1.43	-	-
Rioja, La	3.68	-	0.97	28.19	-	1.21	35.64	0.95	-	2.29
Ceuta	-	-	-	-	-	-	-	-	-	-
Melilla	-	-	-	-	-	-	-	-	-	-

7. Percentage distribution of overnight stays by Autonomous City and Community of origin

Origin Destination	Total	Andalucía	Aragón	Asturias, P. de	Balears, Illes	Canarias	Cantabria	Castilla y León	Castilla-La Mancha	Cataluña
TOTAL	100.00	14.34	3.13	2.88	2.43	10.34	0.85	4.02	3.35	15.93
Andalucía	100.00	58.27	0.65	2.94	0.62	0.70	0.48	2.48	2.56	3.68
Aragón	100.00	4.16	26.70	0.90	0.34	0.20	0.48	4.78	1.78	19.08
Asturias P. de	100.00	4.82	1.69	21.81	-	2.15	4.56	7.09	6.14	4.46
Balears, Illes	100.00	6.18	1.52	1.65	17.02	0.84	1.06	1.54	0.71	33.80
Canarias	100.00	11.85	0.38	0.52	0.90	50.89	0.35	1.68	0.30	2.22
Cantabria	100.00	3.96	2.75	4.55	1.00	1.75	12.25	18.83	1.91	3.43
Castilla y León	100.00	3.06	0.92	3.49	0.31	0.57	2.19	18.24	1.53	5.76
Castilla-La Mancha	100.00	2.31	0.41	1.83	-	0.91	-	6.18	16.12	2.94
Cataluña	100.00	1.63	7.42	0.29	2.57	0.31	0.92	1.09	1.01	64.41
Comunitat Valenciana	100.00	2.53	4.61	1.85	0.23	0.20	0.61	7.61	8.12	4.51
Extremadura	100.00	10.32	4.71	5.18	0.22	2.26	0.89	8.15	5.01	2.11
Galicia	100.00	2.49	0.87	7.06	0.09	2.43	0.87	7.10	2.12	4.59
Madrid, C. de	100.00	10.83	2.81	4.56	2.12	5.56	1.86	6.00	3.50	8.62
Murcia, Región de	100.00	4.27	0.74	25.63	0.00	0.30	0.50	4.56	6.00	1.15
Navarra, C. Foral de	100.00	9.52	1.94	1.54	0.31	4.57	0.40	1.86	0.57	14.26
País Vasco	100.00	2.82	5.69	4.77	-	0.69	1.07	6.91	2.77	15.26
Rioja, La	100.00	0.24	3.83	1.16	-	-	0.39	2.16	-	13.76
Ceuta	-	-	-	-	-	-	-	-	-	-
Melilla	-	-	-	-	-	-	-	-	-	-

(conclusión)

Origin Destination	Comunitat Valenciana	Extremadura	Galicia	Madrid, C. de	Murcia, Región de	Navarra, C. Foral de	País Vasco	Rioja, La	Ceuta	Melilla
TOTAL	8.74	1.39	2.28	21.94	1.86	1.44	4.27	0.71	0.04	0.07
Andalucía	2.92	3.27	0.69	14.51	2.81	0.30	2.50	0.26	0.11	0.25
Aragón	9.73	0.61	1.40	18.32	1.03	3.93	5.90	0.67	-	-
Asturias, P. de	3.39	0.31	1.34	24.13	1.63	1.07	14.02	0.69	-	0.70
Balears, Illes	5.82	0.27	1.89	20.80	0.76	0.56	5.28	0.25	0.04	-
Canarias	1.38	0.92	2.21	23.99	0.47	0.44	1.23	0.28	0.00	-
Cantabria	3.84	0.97	4.80	14.46	0.10	5.15	16.37	3.86	-	-
Castilla y León	3.87	0.43	2.38	50.08	-	0.55	6.10	0.52	-	-
Castilla - La Mancha	6.71	2.07	0.41	56.10	2.55	-	1.45	-	-	-
Cataluña	2.81	1.03	1.14	7.11	0.41	2.30	4.66	0.83	0.08	-
Comunitat Valenciana	25.94	0.81	1.16	31.25	1.47	2.52	5.04	1.46	0.01	0.08
Extremadura	2.46	10.79	2.78	33.76	2.10	1.40	6.88	1.00	-	-
Galicia	1.07	0.54	53.69	10.55	1.01	0.48	4.37	0.64	-	0.02
Madrid, C.de	6.86	3.01	6.86	26.58	2.58	1.55	5.78	0.71	0.11	0.08
Murcia, Región de	3.45	1.73	0.68	33.98	15.15	0.43	1.41	0.01	0.00	0.02
Navarra, C. Foral de	7.25	1.14	3.11	7.53	3.19	15.24	27.33	0.23	-	-
País Vasco	2.49	-	7.14	13.37	-	3.76	32.49	0.80	-	-
Rioja, La	8.58	-	0.98	26.54	-	1.00	38.86	0.96	-	1.54
Ceuta	-	-	-	-	-	-	-	-	-	-
Melilla	-	-	-	-	-	-	-	-	-	-

8. Travellers and overnight stays by countries of residence

Countries	Travellers		Overnight stays	
	Total	%	Total	%
TOTAL	960,514	100.00	5,810,169	100.00
Residents in Spain	362,919	37.78	1,470,644	25.31
Residents abroad	597,594	62.22	4,339,525	74.69
Total residents abroad	597,594	100.00	4,339,525	100.00
Total residents in E.U (excluding Spain)	513,473	85.92	3,806,774	87.72
- Germany	73,823	12.35	727,407	16.76
- Austria	2,520	0.42	21,051	0.49
- Belgium	6,136	1.03	48,285	1.11
-Denmark	13,366	2.24	96,102	2.21
- Finland	5,188	0.87	35,226	0.81
- France	29,129	4.87	168,937	3.89
- Greece	1,276	0.21	4,366	0.10
- Ireland	35,347	5.91	261,330	6.02
- Italy	21,986	3.68	118,587	2.73
- Luxembourg	779	0.13	2,047	0.05
- Netherlands	31,456	5.26	254,448	5.86
- Poland	4,892	0.82	33,368	0.77
- Portugal	7,247	1.21	38,209	0.88
- United Kingdom	251,204	42.04	1,792,160	41.30
- Czech Republic	3,045	0.51	25,778	0.59
- Sweden	19,457	3.26	131,816	3.04
- Other EU countries	6,622	1.11	47,654	1.10
Norway	16,023	2.68	127,930	2.95
Other european countries	26,395	4.42	209,949	4.84
United States of America	12,396	2.07	49,254	1.14
Rest of America	11,566	1.94	58,403	1.35
African countries	3,658	0.61	21,867	0.50
Other countries	14,082	2.36	65,350	1.51

Tourist Accommodation Occupancy Survey Campsite Occupancy Survey (COS) June 2012

Provisional data

1. Travellers, overnight stays and average stay by category of establishment

Category	Number of travellers			Number of overnight stays			Average stay
	Total	Residents in Spain	Residents abroad	Total	Residents in Spain	Residents abroad	
TOTAL	693,863	509,171	184,692	2,987,873	1,742,948	1,244,925	4.31
Luxury and first-class	306,827	208,307	98,520	1,476,928	791,589	685,339	4.81
Second-class	323,422	249,504	73,918	1,303,998	814,980	489,018	4.03
Third-class	63,613	51,360	12,253	206,947	136,380	70,567	3.25
Interannual rate	-0.41	0.32	-2.34	-1.27	-1.70	-0.66	-0.87
Cumulative interannual rate	-1.44	-3.37	3.72	-0.50	-3.20	2.19	0.95

2. Open establishments, capacity, occupancy and number of staff by category of establishments

Category	Estimated open establishments	Capacity		Occupied pitches	Occupancy rate per pitch	Weekend occupancy rate	Employed personnel
		Estimated bedplaces	Estimated pitches				
TOTAL	1,037	698,682	215,401	2,059,229	31.87	34.96	7,778
Luxury and first-class	282	300,711	90,532	860,429	31.68	33.85	3,736
Second-class	570	330,807	104,809	997,114	31.71	35.28	3,336
Third-class	184	67,165	20,061	201,686	33.51	38.14	706
Interannual rate	2.37	1.55	2.13	0.05	-2.04	-5.84	0.17
Cumulative interannual rate	2.73	2.76	3.06	1.02	-2.37	-3.94	2.48

3. Travellers, overnight stays and average stay by Autonomous Cities and Communities

Autonomous Communities	Number of travellers			Number of overnight stays			Average stay
	Total	Residents in Spain	Residents abroad	Total	Residents in Spain	Residents abroad	
TOTAL	693,863	509,171	184,692	2,987,873	1,742,948	1,244,925	4.31
Andalucía	81,452	60,364	21,088	304,137	216,428	87,708	3.73
Aragón	31,410	20,624	10,786	75,811	46,287	29,524	2.41
Asturias, Principado de	16,238	11,762	4,475	54,786	46,375	8,411	3.37
Balears, Illes	4,415	2,873	1,542	22,440	9,555	12,885	5.08
Canarias	3,671	3,615	56	14,303	11,992	2,311	3.90
Cantabria	27,872	22,737	5,135	83,266	68,794	14,472	2.99
Castilla y León	34,273	26,314	7,959	74,522	60,734	13,788	2.17
Castilla - La Mancha	9,584	8,092	1,491	18,515	15,892	2,623	1.93
Cataluña	305,887	210,201	95,686	1,641,771	825,781	815,990	5.37
Comunitat Valenciana	71,647	58,345	13,302	404,095	217,534	186,561	5.64
Extremadura	10,641	8,111	2,530	22,696	17,400	5,295	2.13
Galicia	18,062	13,591	4,472	66,884	57,273	9,611	3.70
Madrid, Comunidad de	24,082	21,114	2,968	59,560	50,439	9,121	2.47
Murcia, Región de	12,376	10,300	2,076	52,761	27,726	25,035	4.26
Navarra, Comunidad Foral de	15,229	12,525	2,704	31,243	26,425	4,817	2.05
País Vasco	14,853	8,439	6,414	35,220	22,470	12,750	2.37
Rioja, La	12,172	10,164	2,008	25,866	21,845	4,021	2.13
Ceuta	-	-	-	-	-	-	-
Melilla	-	-	-	-	-	-	-

4. Open establishments, capacity, occupancy and number of staff by Autonomous Cities and Communities

Autonomous Communities	Estimated open establishments	Capacity		Occupied pitches	Occupancy rate per pitch	Weekend occupancy rate	Employed personnel
		Estimated bedplaces	Estimated pitches				
TOTAL	1,037	698,682	215,401	2,059,229	31.87	34.96	7,778
Andalucía	138	80,624	25,754	158,090	20.46	23.51	974
Aragón	83	29,834	9,012	63,494	23.48	29.24	336
Asturias, Principado de	47	24,773	7,707	44,762	19.36	19.87	210
Balears, Illes	8	3,157	1,272	7,678	20.13	21.88	81
Canarias	6	4,693	1,333	8,092	20.23	28.33	27
Cantabria	44	32,884	10,340	99,880	32.20	34.70	199
Castilla y León	92	37,959	11,592	86,190	24.78	26.18	324
Castilla - La Mancha	26	10,828	3,042	14,220	15.58	26.67	104
Cataluña	284	298,883	90,543	998,312	36.75	39.71	3,561
Comunitat Valenciana	102	69,574	21,941	267,614	40.66	42.44	863
Extremadura	30	11,713	3,573	25,843	24.11	27.50	161
Galicia	86	31,448	9,889	43,936	14.81	16.98	301
Madrid, Comunidad de	21	17,772	5,974	91,941	51.30	53.56	176
Murcia, Región de	19	14,876	4,902	35,878	24.40	31.54	167
Navarra, Comunidad Foral de	24	13,097	3,424	39,461	38.41	44.80	135
País Vasco	20	9,623	2,862	32,778	38.17	42.76	100
Rioja, La	9	6,945	2,240	41,061	61.11	61.61	59
Ceuta	-	-	-	-	-	-	-
Melilla	-	-	-	-	-	-	-

5. Travellers and overnight stays, average stay, capacity, occupancy and number of staff by provinces with the greatest number of overnight stays*

Provinces	Travellers		Overnight stays		Average stay	Estimated open establishments	Estimated pitches	Occupancy rate per pitch	Employed personnel
	Residents in Spain	Residents abroad	Residents in Spain	Residents abroad					
Girona	68,407	54,934	338,181	458,227	6.46	122	43,962	30.98	1,851
Tarragona	80,096	23,750	297,444	246,778	5.24	61	25,857	40.70	1,108
Barcelona	52,732	14,534	169,765	103,221	4.06	58	14,428	49.77	452
Alicante\Alacant	18,746	5,252	99,726	121,897	9.23	33	9,438	41.69	412
Castellón\Castelló	14,914	4,947	49,777	44,450	4.74	37	6,534	34.38	228
Valencia\València	24,685	3,102	68,030	20,215	3.18	32	5,969	45.89	224
Huelva	11,003	1,174	81,346	3,032	6.93	10	4,833	23.65	197
Cádiz	23,576	6,017	64,920	18,902	2.83	31	7,038	18.54	247
Málaga	11,332	3,803	38,245	36,570	4.94	28	4,888	29.54	181
Huesca	16,116	7,863	33,852	20,071	2.25	56	6,574	25.53	251
Pontevedra	7,914	1,135	28,377	4,048	3.58	38	5,282	14.88	155
Coruña, A	3,001	2,825	24,530	4,665	5.01	35	3,671	15.40	99
Lleida	8,965	2,468	20,391	7,764	2.46	44	6,296	30.97	149
Granada	6,169	4,800	12,875	13,841	2.44	22	2,663	18.20	113
Gipúzkoa	4,592	4,838	10,649	10,199	2.21	11	1,672	29.29	55

* Provinces belonging to uniprovincial Autonomous Communities have not been included because they are reflected in previous tables.

6. Travellers, overnight stays, average stay, open establishments, capacity, occupancy and number of staff from tourist areas with the greatest number of overnight stays

Tourist areas	Number of travellers		Number of overnight stays		Average stay	Estimated open establishments	Estimated pitches	Occupancy rate per pitch	Employed personnel
	Residents in Spain	Residents abroad	Residents in Spain	Residents abroad					
	Costa Brava	59,142	54,158	319,575					
Costa Daurada	74,001	21,705	257,758	237,152	5.17	48	23,240	41.63	968
P.N. Aiguamolls de l'Empordà	11,951	17,629	71,877	140,667	7.19	22	10,407	34.02	530
Costa Blanca	17,119	4,543	85,944	109,070	9.00	29	7,568	46.74	362
Costa de Castellón	12,614	4,142	44,886	42,437	5.21	30	5,972	33.98	210
Costa de la Luz (Cádiz)	21,660	5,725	60,666	18,453	2.89	25	6,270	18.82	213
Costa de la Luz (Huelva)	8,870	963	75,012	2,165	7.85	7	4,333	21.29	173
Pirineus	26,240	3,401	60,293	10,976	2.40	75	9,764	36.10	264
Costa del Sol	9,963	2,563	35,511	33,423	5.50	14	3,562	35.61	131
Pirineo Aragonés	15,888	7,229	33,598	19,356	2.29	52	6,400	26.15	248
Costa Valencia	10,764	1,959	35,691	16,660	4.11	10	2,267	36.86	115
Costa Verde	11,136	3,548	44,946	6,204	3.48	38	6,690	20.74	186
Terres de l'Ebre	6,095	2,046	39,686	9,626	6.06	13	2,617	32.51	140
Rías Baixas	9,357	1,628	34,441	5,770	3.66	46	6,604	13.71	188
Costa Cálida	5,863	1,597	17,654	21,909	5.30	10	3,898	22.33	125

7. Travellers, overnight stays, average stay, open establishments, capacity, occupancy and number of staff from tourist sites with the greatest number at overnights stays

Tourist sites	Number of guests		Number of overnight stays		Average stay	Estimated open establishments	Estimated pitches	Occupancy rate per pitch	Employed personnel
	Residents in Spain	Residents abroad	Residents in Spain	Residents abroad					
	Salou	9,621	7,203	50,022					
Torroella de Montgrí	1,607	10,907	12,651	117,197	10.38	9	4,672	37.45	300
Benidorm	3,004	1,388	15,297	82,977	22.38	9	3,775	55.03	102
Castelló d'Empúries	3,848	5,432	29,985	60,205	9.72	5	3,410	43.83	177
Sant Pere Pescador	5,534	8,811	25,263	57,003	5.73	7	3,848	29.75	248
Castell-Platja d'Aro	7,492	4,923	36,803	41,816	6.33	7	4,588	32.44	107
Mont-Roig del Camp	8,628	5,741	33,799	39,768	5.12	6	4,441	24.96	219
Blanes	9,742	817	41,359	28,901	6.65	9	3,213	36.84	126
Calonge	4,337	3,640	25,155	40,577	8.24	4	2,465	30.55	108
Vilanova i la Geltrú	5,944	3,536	17,537	43,922	6.48	3	2,684	42.10	81
Tarragona	10,451	2,885	27,037	28,929	4.20	5	2,730	61.50	177
Pals	3,286	1,733	23,762	17,642	8.25	5	3,352	18.40	115

8. Percentage distribution of Spanish travellers by Autonomous City and Community of origin

Destination \ Origin	Total	Andalucía	Aragón	Asturias, P. de	Balears, Illes	Canarias	Cantabria	Castilla y León	Castilla-La Mancha	Cataluña
TOTAL	100.00	10.94	3.86	2.25	0.48	0.88	0.98	3.13	2.51	39.41
Andalucía	100.00	84.01	0.26	0.44	0.03	0.25	0.19	1.10	1.15	1.26
Aragón	100.00	1.68	42.34	0.76	0.59	0.14	0.36	1.51	2.04	19.79
Asturias, Principado de	100.00	1.76	1.25	44.32	0.16	0.73	5.88	12.13	2.16	2.13
Balears, Illes	100.00	2.57	-	-	69.60	0.35	0.33	0.35	0.70	18.82
Canarias	100.00	-	-	-	-	99.79	-	-	-	-
Cantabria	100.00	0.52	0.44	1.00	0.06	0.37	13.34	15.69	0.35	1.30
Castilla y León	100.00	1.24	1.87	17.29	0.07	0.08	2.31	23.85	2.74	0.93
Castilla - La Mancha	100.00	2.10	0.21	0.27	0.19	0.18	0.14	0.30	51.29	0.62
Cataluña	100.00	0.29	3.83	0.10	0.08	0.05	0.05	0.25	0.23	90.40
Comunitat Valenciana	100.00	1.70	2.19	0.14	0.02	0.05	0.18	1.29	6.90	4.59
Extremadura	100.00	5.41	0.09	1.11	0.27	1.29	0.17	16.75	10.66	0.52
Galicia	100.00	0.54	0.22	3.18	-	0.41	0.77	3.50	0.80	1.22
Madrid, Comunidad de	100.00	3.82	0.09	0.42	0.08	0.08	0.12	1.06	0.87	2.99
Murcia, Región de	100.00	4.61	0.13	0.07	-	0.62	0.23	0.93	5.82	0.86
Navarra, C. Foral de	100.00	0.34	1.62	0.13	-	0.32	0.19	0.69	0.69	1.96
País Vasco	100.00	2.83	2.65	0.80	0.14	0.66	0.52	1.82	0.67	5.88
Rioja, La	100.00	0.54	1.71	0.22	-	-	0.27	-	-	1.05
Ceuta	-	-	-	-	-	-	-	-	-	-
Melilla	-	-	-	-	-	-	-	-	-	-

(conclusion)

Destination \ Origin	Comunitat Valenciana	Extremadura	Galicia	Madrid, C. de	Murcia, Región	Navarra, C. Foral de	País Vasco	Rioja, La	Ceuta	Melilla
TOTAL	9.13	0.93	2.63	8.93	2.09	2.37	8.84	0.54	0.06	0.03
Andalucía	1.22	2.38	0.57	3.04	1.29	0.22	1.96	0.20	0.34	0.11
Aragón	6.29	0.18	0.40	7.56	0.37	4.45	10.13	0.88	0.05	0.48
Asturias, Principado de	1.00	0.79	6.66	9.62	0.40	0.58	9.86	0.58	-	-
Balears, Illes	4.85	0.35	0.17	1.04	-	0.17	0.70	-	-	-
Canarias	-	-	-	0.21	-	-	-	-	-	-
Cantabria	0.46	0.24	0.76	3.47	0.40	1.67	58.77	1.15	-	-
Castilla y León	1.24	0.31	1.02	29.44	0.33	1.60	14.64	1.02	-	-
Castilla - La Mancha	9.02	0.18	0.22	16.10	18.74	-	0.18	-	0.25	-
Cataluña	1.17	0.08	0.11	0.62	0.02	1.62	0.95	0.15	0.02	-
Comunitat Valenciana	64.48	0.08	0.14	14.09	2.75	0.24	0.97	0.14	0.03	-
Extremadura	0.52	30.54	1.56	27.79	0.17	0.81	2.36	-	-	-
Galicia	0.78	1.31	81.47	2.58	0.15	0.49	2.55	0.04	-	-
Madrid, Comunidad de	3.14	0.28	0.16	83.80	0.19	0.31	1.56	0.99	0.06	-
Murcia, Región de	18.07	0.23	0.40	5.79	61.21	0.28	0.75	-	-	-
Navarra, C. Foral de	0.84	0.16	0.33	1.63	0.10	37.94	52.59	0.46	-	-
País Vasco	2.01	0.56	0.60	4.10	0.23	15.43	58.33	2.78	-	-
Rioja, La	0.07	0.07	0.64	0.88	-	3.16	82.12	9.28	-	-
Ceuta	-	-	-	-	-	-	-	-	-	-
Melilla	-	-	-	-	-	-	-	-	-	-

9. Percentage distribution of overnight stays of Spanish travellers by Autonomous City and Community of origin

Destination \ Origin	Total	Andalucía	Aragón	Asturias, P. de	Balears, Illes	Canarias	Cantabria	Castilla y León	Castilla-La Mancha	Cataluña
TOTAL	100.00	11.52	3.46	2.95	0.31	0.95	0.80	3.23	2.30	44.57
Andalucía	100.00	86.26	0.33	0.46	0.01	0.39	0.14	1.11	0.85	1.08
Aragón	100.00	2.30	39.19	0.94	0.35	0.36	0.32	2.23	2.37	19.13
Asturias, Principado de	100.00	0.75	1.32	67.28	0.04	0.28	3.22	8.61	0.91	1.05
Balears, Illes	100.00	10.35	-	-	43.04	1.87	0.81	1.12	1.25	31.06
Canarias	100.00	-	-	-	-	99.86	-	-	-	-
Cantabria	100.00	0.43	0.79	1.38	0.03	0.25	11.37	18.99	0.34	1.98
Castilla y León	100.00	1.04	2.80	21.98	0.07	0.08	2.56	24.44	2.37	1.16
Castilla - La Mancha	100.00	1.44	0.13	0.36	0.36	0.13	0.10	0.26	49.60	0.35
Cataluña	100.00	0.17	3.88	0.10	0.08	0.05	0.17	0.42	0.15	90.07
Comunitat Valenciana	100.00	1.62	2.39	0.46	0.05	0.90	0.14	2.04	9.85	5.33
Extremadura	100.00	4.79	0.09	1.82	0.73	0.97	0.09	40.10	5.67	0.57
Galicia	100.00	0.22	0.30	2.79	-	0.14	0.51	7.16	0.52	0.71
Madrid, Comunidad de	100.00	5.38	0.05	0.52	0.09	0.06	0.25	1.35	1.27	3.26
Murcia, Región de	100.00	4.97	0.05	0.80	0.03	0.40	0.29	2.46	7.44	1.81
Navarra, C. Foral de	100.00	0.25	0.94	0.19	-	0.19	0.53	0.90	0.63	1.59
País Vasco	100.00	1.86	2.23	0.27	0.18	0.90	0.31	1.50	0.69	6.79
Rioja, La	100.00	0.49	1.86	0.09	-	-	0.39	-	0.06	0.98
Ceuta	-	-	-	-	-	-	-	-	-	-
Melilla	-	-	-	-	-	-	-	-	-	-

(conclusion)

Destination \ Origin	Comunitat Valenciana	Extremadura	Galicia	Madrid, C. de	Murcia, Región	Navarra, C. Foral de	País Vasco	Rioja, La	Ceuta	Melilla
TOTAL	8.69	0.63	3.09	6.45	1.54	2.04	6.96	0.42	0.06	0.03
Andalucía	0.83	1.94	0.44	2.84	0.88	0.25	1.55	0.20	0.33	0.12
Aragón	6.59	0.15	0.33	9.19	0.31	4.03	10.90	0.72	0.09	0.52
Asturias, Principado de	0.42	0.35	3.34	4.55	0.37	0.16	7.13	0.23	-	-
Balears, Illes	4.27	0.12	0.40	3.89	-	0.33	1.50	-	-	-
Canarias	-	-	-	0.14	-	-	-	-	-	-
Cantabria	0.41	0.57	0.76	3.22	0.44	2.63	55.16	1.26	-	-
Castilla y León	1.39	0.20	0.85	24.54	0.28	2.45	12.39	1.39	-	-
Castilla - La Mancha	10.62	0.11	0.51	15.01	20.72	-	0.19	-	0.13	-
Cataluña	0.78	0.07	0.13	0.56	0.05	1.84	1.38	0.12	0.01	-
Comunitat Valenciana	58.98	0.09	0.27	12.34	3.18	0.31	1.81	0.18	0.04	-
Extremadura	0.45	27.33	0.93	14.42	0.08	0.58	1.36	-	-	-
Galicia	0.66	0.37	82.80	1.63	0.27	0.27	1.63	0.01	-	-
Madrid, Comunidad de	3.49	0.16	0.19	81.27	0.11	0.38	1.58	0.56	0.03	-
Murcia, Región de	20.57	0.17	1.10	9.97	48.14	0.19	1.51	0.12	-	-
Navarra, C. Foral de	0.69	0.25	0.56	1.41	0.11	40.44	51.07	0.25	0.01	-
País Vasco	1.54	0.32	0.64	3.16	0.12	9.53	67.65	2.30	-	-
Rioja, La	0.05	0.15	0.57	1.57	-	2.48	80.54	10.78	-	-
Ceuta	-	-	-	-	-	-	-	-	-	-
Melilla	-	-	-	-	-	-	-	-	-	-

10. Travellers and overnight stays by countries of residence

Countries	Travellers		Overnight stays	
	Total	%	Total	%
TOTAL	693,863	100.00	2,987,873	100.00
Residents in Spain	509,171	73.38	1,742,948	58.33
Residents abroad	184,692	26.62	1,244,925	41.67
TOTAL residents abroad	184,692	100.00	1,244,925	100.00
TOTAL residents in E.U. (excluding Spain)	170,329	92.22	1,196,092	96.08
- Germany	29,155	15.79	189,939	15.26
- Austria	1,561	0.85	7,012	0.56
- Belgium	10,656	5.77	79,053	6.35
- Denmark	1,857	1.01	10,341	0.83
- Finland	515	0.28	4,417	0.35
- France	36,321	19.67	179,031	14.38
- Greece	91	0.05	182	0.01
- Ireland	9,957	5.39	84,867	6.82
- Italy	4,933	2.67	15,635	1.26
- Luxembourg	860	0.47	14,865	1.19
- Netherlands	37,967	20.56	310,664	24.95
- Poland	1,688	0.91	8,647	0.69
- Portugal	3,447	1.87	12,774	1.03
- United Kingdom	26,930	14.58	258,260	20.75
- Czech Republic	1,150	0.62	6,250	0.50
- Sweden	997	0.54	6,890	0.55
- Other EU countries	2,242	1.21	7,265	0.58
Other European countries	7,146	3.87	27,078	2.18
United States of America	1,002	0.54	2,754	0.22
Rest of America	1,420	0.77	3,571	0.29
African countries	237	0.13	597	0.05
Other countries	4,558	2.47	14,833	1.19

Tourist accommodation occupancy survey: (Rural tourist accommodation)

June 2012

Provisional data

1. Number of travellers, overnight stays and average stay by Autonomous Cities and Communities

Autonomous Communities	Number of travellers			Number of overnight stays			Average stay
	Total	Residents In Spain	Residents abroad	Total	Residents In Spain	Residents abroad	
TOTAL	223,875	182,693	41,182	536,296	373,362	162,933	2.40
Andalucía	12,379	7,873	4,506	45,268	21,231	24,037	3.66
Aragón	8,847	7,097	1,750	24,492	17,065	7,427	2.77
Asturias, Principado de	11,757	11,321	435	29,329	27,687	1,643	2.49
Balears, Illes	18,422	2,796	15,626	91,344	8,452	82,892	4.96
Canarias	2,620	1,459	1,161	12,897	5,926	6,971	4.92
Cantabria	16,653	13,464	3,188	33,284	26,317	6,967	2.00
Castilla y León	46,839	42,104	4,735	87,605	77,176	10,429	1.87
Castilla-La Mancha	13,452	13,308	145	25,837	24,682	1,155	1.92
Cataluña	27,833	25,390	2,443	59,329	50,238	9,090	2.13
Comunitat Valenciana	9,805	9,352	454	25,120	23,496	1,625	2.56
Extremadura	8,143	7,630	513	15,826	14,867	959	1.94
Galicia	12,112	8,305	3,808	20,298	14,454	5,844	1.68
Madrid, C. de	11,962	11,462	500	19,313	18,339	973	1.61
Murcia, Región de	2,950	2,886	64	5,456	5,289	167	1.85
Navarra, C. Foral de	8,499	7,614	885	16,680	15,795	885	1.96
País Vasco	9,303	8,405	898	20,062	18,262	1,800	2.16
Rioja, La	2,296	2,228	69	4,154	4,085	69	1.81
Ceuta	-	-	-	-	-	-	-
Melilla	-	-	-	-	-	-	-
Interannual rate	-9.40	-12.61	8.20	-10.33	-18.46	16.27	-1.02
Cumulative interannual rate	-1.70	-3.63	12.52	-0.72	-3.78	10.89	0.99

2. Open rural tourist accommodation and estimated vacancies, levels of occupancy and personnel employed by Autonomous Cities and Communities

Autonomous Communities	Nº of rural open estimated accom.	Nº of vacancies	Level of occupancy			Employed personnel
			By vacancies	By vacancies at week end	By rooms	
TOTAL	15,786	147,560	12.06	21.97	13.89	22,637
Andalucía	1,427	11,867	12.64	16.36	17.80	2,038
Aragón	1,150	8,911	9.11	17.26	10.51	1,259
Asturias, Principado de	1,394	12,525	7.80	13.90	9.06	1,672
Balears, Illes	291	5,309	56.67	59.34	59.89	1,359
Canarias	661	3,959	10.82	13.21	14.89	884
Cantabria	451	8,078	13.69	24.51	16.20	663
Castilla y León	3,337	29,898	9.75	21.07	11.24	4,739
Castilla-La Mancha	1,533	12,773	6.73	15.19	6.76	2,330
Cataluña	1,746	14,165	13.90	34.65	16.10	2,140
Comunitat Valenciana	1,012	9,653	8.67	12.98	8.11	1,471
Extremadura	519	6,277	8.39	16.84	10.19	750
Galicia	561	7,033	9.60	13.80	10.33	915
Madrid, C. de	243	4,242	15.13	33.15	18.22	593
Murcia, Región de	247	2,564	7.08	20.55	9.79	354
Navarra, C. Foral de	712	5,173	10.70	29.16	12.09	876
País Vasco	388	4,063	16.38	31.84	18.78	465
Rioja, La	114	1,068	12.76	35.48	12.05	130
Ceuta	-	-	-	-	-	-
Melilla	-	-	-	-	-	-
Interannual rate	2.39	3.50	-13.34	-19.91	-12.02	-1.74
Cumulative interannual rate	2.88	3.42	-4.43	-7.36	-3.30	-0.81

3. Number of travellers, overnight stays and average stay of provinces with the greatest number of overnight stays¹

Provinces	Number of travellers			Number of overnight stays			Average stay
	Total	Residents In Spain	Residents abroad	Total	Residents In Spain	Residents abroad	
Girona	11,687	10,640	1,046	24,707	19,740	4,967	2.11
Málaga	3,021	1,280	1,741	20,434	6,547	13,888	6.76
Ávila	9,556	9,130	426	19,141	16,351	2,791	2.00
Barcelona	8,248	7,051	1,197	18,807	15,233	3,574	2.28
Valencia\València	5,522	5,296	226	17,475	16,629	846	3.16
Cáceres	7,349	6,927	423	14,431	13,619	812	1.96
Huesca	4,520	3,235	1,285	13,560	8,746	4,814	3.00
León	6,430	4,746	1,684	13,321	10,155	3,166	2.07
Segovia	7,425	6,976	449	12,406	11,482	924	1.67
Gipuzkoa	4,545	4,059	486	10,215	9,426	789	2.25
Lleida	4,951	4,951	-	10,174	10,152	22	2.06
Santa Cruz de Tenerife	1,843	999	844	9,994	4,405	5,589	5.42
Burgos	5,125	4,505	619	9,659	8,825	834	1.88
Soria	4,936	4,672	264	9,405	8,564	842	1.91
Salamanca	4,354	4,117	236	8,650	8,178	472	1.99

4. Open rural tourist accommodation and estimated vacancies degrees of occupancy and personnel employed in provinces with the highest number of overnight stays¹

Provinces	Nº of rural open estimated accommodation	Nº of vacancies	Level of occupancy			Employed personnel
			By vacancies	By vacancies at the weekend	By rooms	
Girona	571	4,788	17.08	40.85	19.40	757
Málaga	567	3,782	17.88	18.55	28.75	726
Ávila	756	5,693	11.20	26.41	11.56	1,175
Barcelona	453	3,968	15.76	40.99	18.39	597
Valencia\València	311	3,522	16.53	16.92	12.89	479
Cáceres	457	5,605	8.56	17.17	10.45	664
Huesca	598	4,459	10.11	15.86	12.45	647
León	437	4,044	10.94	16.75	12.31	678
Segovia	400	3,704	11.13	28.88	12.22	577
Gipuzkoa	180	1,957	17.31	32.33	20.36	218
Lleida	517	3,624	9.35	23.98	11.82	562
Santa Cruz de Tenerife	534	2,931	11.33	13.68	15.32	688
Burgos	351	3,600	8.94	17.31	11.61	431
Soria	312	2,980	10.50	26.10	12.06	380
Salamanca	477	3,827	7.53	17.86	9.41	628

¹ Provinces belonging to uniprovincial Autonomous Communities have not been included because they are reflected in previous tables.

5. Number of travellers, overnight stays, average stay, estimated vacancies, levels of occupancy and personnel employed in areas with the highest number of overnight stays

Areas	Number of travellers		Number of overnight stays		Average stay	Capacity		Level of occupancy		
	Residents In Spain	Residents abroad	Residents In Spain	Residents abroad		Nº of rural open esti- mated accom.	Nº of vacancies	By vacancies	By vacancies at week end	By rooms
Isla de Mallorca	1,359	13,040	3,281	70,015	5.09	242	4,362	55.35	56.81	58.98
Costa Brava	7,307	868	13,703	4,450	2.22	358	3,098	19.38	44.11	22.16
Pirineus	7,994	619	15,951	1,338	2.01	696	5,208	11.01	30.89	12.23
Pirineo Navarro	5,907	75	13,048	75	2.19	622	4,432	9.84	27.12	10.88
Pirineo Aragonés	3,919	1,189	8,887	4,075	2.54	549	4,152	10.35	18.82	11.74
Catalunya Central	4,133	702	9,244	2,398	2.41	288	2,459	15.77	38.56	19.14
P.Nacional Picos de Europa	2,842	789	9,777	1,799	3.19	259	2,576	14.97	24.09	16.39
Costa Verde	3,423	288	9,977	1,200	3.01	439	4,378	8.50	12.24	10.53
Islas de Ibiza-Formentera	615	1,775	1,948	8,951	4.56	29	528	67.75	74.55	68.58
Isla de Menorca	823	810	3,223	3,926	4.38	21	419	56.49	66.55	58.38
Rías Baixas	2,309	260	4,878	541	2.11	146	1,794	10.04	16.30	10.35
Pirineo Vasco	2,256	11	4,983	75	2.23	125	1,290	13.02	25.07	15.97
Costa de Gipuzkoa	1,805	427	4,118	644	2.13	62	693	22.69	43.43	24.55
Costa de la Luz de Cádiz	1,266	495	3,049	1,645	2.66	26	490	31.58	47.70	42.24
Isla de La Palma	303	194	2,342	2,234	9.21	288	1,242	12.19	14.53	16.25

6. Number of travellers, overnight stays, average stay, estimated vacancies, levels of occupancy and personnel employed class per rural house per Autonomous Cities and Communities

Autonomous Communities	Number of travellers		Number of overnight stays		Average stay	Capacity		Level of occupancy		Employed personnel
	Residents In Spain	Residents abroad	Residents In Spain	Residents abroad		Nº of rural open esti- mated accom.	Nº of vacancies	By vacancies	By vacancies at week end	
TOTAL	102,592	17,800	219,051	71,543	2.41	12,837	98,563	9.79	19.28	16,639
Andalucía	7,097	4,124	19,389	23,231	3.80	1,402	11,366	12.43	15.90	1,971
Aragón	5,582	1,645	12,487	6,729	2.66	843	6,484	9.81	17.98	926
Asturias, Principado de	4,299	239	12,110	1,204	2.93	956	5,949	7.45	12.14	1,042
Balears, Illes	693	3,203	1,654	13,040	3.77	70	958	50.66	53.60	207
Canarias	873	582	4,927	4,710	6.63	633	3,218	9.95	11.48	750
Cantabria	1,827	206	4,631	1,472	3.00	140	2,124	9.57	16.55	169
Castilla y León	19,679	1,481	42,400	5,598	2.27	2,786	18,706	8.53	18.50	3,479
Castilla-La Mancha	12,099	145	21,318	1,155	1.84	1,494	11,988	6.24	14.66	2,265
Cataluña	19,019	1,905	37,472	7,220	2.14	1,465	11,186	13.25	33.09	1,746
Comunitat Valenciana	5,087	381	9,743	1,552	2.07	975	7,490	5.02	10.48	1,332
Extremadura	3,595	164	7,634	356	2.13	328	3,009	8.82	18.99	422
Galicia	4,828	2,241	8,645	3,332	1.69	397	4,691	8.50	12.13	590
Madrid, C. de	1,082	75	2,328	113	2.11	65	605	13.37	33.81	135
Murcia, Región de	2,384	-	4,471	-	1.88	241	2,393	6.21	19.13	330
Navarra, C. Foral de	7,614	885	15,795	885	1.96	712	5,173	10.70	29.16	876
País Vasco	4,605	453	9,962	876	2.14	218	2,153	16.72	31.40	268
Rioja, La	2,228	69	4,085	69	1.81	114	1,068	12.76	35.48	130
Ceuta	-	-	-	-	-	-	-	-	-	-
Melilla	-	-	-	-	-	-	-	-	-	-

² To facilitate the comparability between data from different Autonomous Communities (and because of the different regulation and different characteristics), a group called rural house has been created, with those accommodations with similar typology (location, capacity, etc...).

The variables included in the previous table have been estimated with that type of establishments.

The variables shown in the table have been estimated with the type of accommodation under rural tourist accommodation.

7. Percentage distribution of Spanish travellers by Autonomous Cities and Community of origin

Origin Destination	Total	Andalucía	Aragón	Asturias, P. de	Balears, Illes	Canarias	Cantabria	Castilla y León	Castilla-La Mancha	Cataluña
TOTAL	100.00	4.90	2.48	2.92	0.76	1.15	1.70	6.37	3.58	17.36
Andalucía	100.00	70.36	0.22	-	0.32	-	0.67	-	1.40	1.66
Aragón	100.00	2.29	31.41	0.27	-	-	0.91	1.06	-	15.00
Asturias, P. de	100.00	0.96	0.79	28.80	0.70	1.61	4.43	11.42	2.31	3.89
Balears, Illes	100.00	3.38	-	0.77	35.92	0.31	2.47	1.39	0.61	27.36
Canarias	100.00	1.76	-	1.32	-	80.26	0.59	-	1.20	5.30
Cantabria	100.00	1.96	2.92	4.28	0.26	3.28	7.05	12.50	1.90	3.29
Castilla y León	100.00	1.43	1.01	2.16	0.12	0.34	2.47	15.76	4.00	1.40
Castilla-La Mancha	100.00	2.40	0.26	0.03	-	-	0.26	1.28	16.67	2.03
Cataluña	100.00	-	0.09	-	-	-	-	-	0.76	97.51
Comunitat Valenciana	100.00	1.29	0.69	0.74	-	-	0.81	-	1.71	5.70
Extremadura	100.00	11.44	0.41	0.30	-	1.16	1.45	4.97	5.52	2.30
Galicia	100.00	2.70	1.29	3.15	2.03	0.59	0.32	2.52	1.13	6.43
Madrid, C. de	100.00	2.65	1.41	0.77	0.08	-	0.65	1.76	5.71	1.13
Murcia, Región de	100.00	0.45	1.72	0.30	-	-	-	-	7.33	0.89
Navarra, C. Foral de	100.00	1.86	5.58	-	-	-	-	7.44	-	4.65
País Vasco	100.00	2.00	4.03	0.88	0.21	0.10	1.21	4.48	2.79	15.16
Rioja, La	100.00	-	6.56	-	-	-	-	-	-	6.95
Ceuta	-	-	-	-	-	-	-	-	-	-
Melilla	-	-	-	-	-	-	-	-	-	-

(conclusion)										
Origin Destination	Comunitat Valenciana	Extrema- dura	Galicia	Madrid C. de	Murcia, Región de	Navarra, C. Foral de	País Vasco	Rioja, La	Ceuta	Melilla
TOTAL	6.72	1.97	4.57	29.64	1.99	2.39	10.48	0.93	0.10	-
Andalucía	4.39	4.27	2.13	7.47	5.23	-	1.89	-	-	-
Aragón	15.67	0.47	-	15.14	0.21	1.06	13.50	3.01	-	-
Asturias, P. de	-	-	3.42	27.47	1.08	-	13.12	-	-	-
Balears, Illes	2.77	-	4.68	17.50	0.39	-	2.45	-	-	-
Canarias	0.59	-	0.29	3.55	-	-	5.14	-	-	-
Cantabria	1.49	0.52	3.02	19.49	-	4.41	29.66	3.97	-	-
Castilla y León	2.20	0.65	4.55	54.22	0.81	1.11	6.64	1.12	-	-
Castilla-La Mancha	6.18	1.32	3.10	61.82	3.85	0.51	0.03	0.26	-	-
Cataluña	-	-	-	0.17	-	0.12	1.34	-	-	-
Comunitat Valenciana	80.49	-	-	5.46	0.51	0.74	0.05	-	1.82	-
Extremadura	1.59	32.66	1.01	33.54	1.52	1.64	0.43	0.06	-	-
Galicia	4.09	0.86	56.53	13.20	0.10	0.11	3.99	0.83	0.12	-
Madrid, C. de	1.92	0.16	0.08	80.95	0.16	0.46	1.63	0.48	-	-
Murcia, Región de	14.66	-	-	11.43	62.48	-	0.30	0.45	-	-
Navarra, C. Foral de	-	-	-	0.47	-	27.44	52.56	-	-	-
País Vasco	0.71	1.55	1.75	8.52	2.70	7.00	45.00	1.91	-	-
Rioja, La	3.86	-	-	26.64	-	8.49	41.31	6.18	-	-
Ceuta	-	-	-	-	-	-	-	-	-	-
Melilla	-	-	-	-	-	-	-	-	-	-

8. Percentage distribution of overnight stays by Spaniards by Autonomous Community of origin

Origin	Total	Andalucía	Aragón	Asturias, P. de	Balears, Illes	Canarias	Cantabria	Castilla y León	Castilla-La Mancha	Cataluña
TOTAL	100.00	6.35	2.68	2.47	0.73	2.34	1.70	5.99	3.85	17.56
Andalucía	100.00	66.97	0.32	-	0.48	1.83	0.74	-	0.60	2.00
Aragón	100.00	4.02	33.29	0.11	-	2.36	1.20	0.61	0.35	14.47
Asturias, P. de	100.00	2.62	0.94	15.16	0.57	2.92	3.50	6.65	9.00	4.66
Balears, Illes	100.00	2.52	-	2.34	24.30	0.10	2.78	2.70	0.51	35.31
Canarias	100.00	2.17	-	0.33	-	75.28	0.14	-	1.18	6.68
Cantabria	100.00	3.47	1.92	4.22	0.40	7.80	7.96	11.34	3.24	3.30
Castilla y León	100.00	1.82	1.14	3.20	0.11	0.40	1.81	16.42	3.49	1.19
Castilla-La Mancha	100.00	4.51	0.28	0.02	-	-	0.28	1.38	15.04	1.76
Cataluña	100.00	-	0.05	-	-	-	-	-	0.77	96.90
Comunitat Valenciana	100.00	1.03	0.49	1.17	-	-	1.28	-	1.15	3.58
Extremadura	100.00	13.16	0.36	0.82	-	0.81	2.89	3.96	10.95	6.59
Galicia	100.00	1.93	1.03	2.20	1.36	0.73	0.19	7.52	1.68	7.52
Madrid, C. de	100.00	3.86	2.41	1.33	0.05	0.10	1.12	2.00	4.69	1.16
Murcia, Región de	100.00	0.24	1.88	0.32	-	-	-	-	7.84	1.94
Navarra, C. Foral de	100.00	3.59	2.69	-	-	-	-	8.07	-	4.48
País Vasco	100.00	2.83	5.67	1.33	0.10	0.23	1.26	4.88	2.35	15.50
Rioja, La	100.00	0.42	4.84	-	-	-	-	-	1.89	8.00
Ceuta	-	-	-	-	-	-	-	-	-	-
Melilla	-	-	-	-	-	-	-	-	-	-

Origin	Comunitat Valenciana	Extremadura	Galicia	Madrid C. de	Murcia, Región	Navarra, C. Foral de	País Vasco	Rioja, La	Ceuta	Melilla	(conclusion)
TOTAL	8.69	1.77	3.80	26.58	2.00	2.50	10.09	0.82	0.10	-	-
Andalucía	8.31	3.18	2.00	8.10	3.92	-	1.55	-	-	-	-
Aragón	11.64	1.36	-	11.67	0.09	5.02	11.40	2.39	-	-	-
Asturias, P. de	4.74	-	2.36	32.14	1.77	-	12.97	-	-	-	-
Balears, Illes	4.65	-	3.83	16.78	0.51	-	3.65	-	-	-	-
Canarias	0.43	-	0.14	5.66	-	-	7.98	-	-	-	-
Cantabria	2.19	0.33	2.63	19.14	-	2.89	25.53	3.63	-	-	-
Castilla y León	2.42	0.87	4.56	52.84	0.73	1.00	7.05	0.90	0.03	-	-
Castilla-La Mancha	5.89	0.94	3.35	58.13	5.10	0.28	2.78	0.28	-	-	-
Cataluña	-	-	0.17	0.09	-	0.25	1.77	-	-	-	-
Comunitat Valenciana	85.38	-	-	3.45	0.40	0.59	0.02	-	1.45	-	-
Extremadura	1.25	29.27	0.70	26.31	1.69	0.84	0.34	0.06	-	-	-
Galicia	5.17	0.95	49.16	14.96	0.21	0.25	4.40	0.67	0.07	-	-
Madrid, C. de	3.89	0.30	0.15	74.88	0.82	0.53	2.32	0.40	-	-	-
Murcia, Región de	15.37	-	-	11.58	60.26	-	0.32	0.24	-	-	-
Navarra, C. Foral de	-	-	-	0.22	-	30.94	50.00	-	-	-	-
País Vasco	1.50	0.84	2.20	12.82	2.91	5.88	38.16	1.54	-	-	-
Rioja, La	6.74	-	-	25.89	-	9.26	31.58	11.37	-	-	-
Ceuta	-	-	-	-	-	-	-	-	-	-	-
Melilla	-	-	-	-	-	-	-	-	-	-	-

9. Travellers and overnight stays by country of residence

Results by countries	Travellers		Overnight stays	
	Total	%	Total	%
TOTAL	223,875	100.00	536,296	100.00
Residents Spain	182,693	81.60	373,362	69.62
Residents abroad	41,182	18.40	162,933	30.38
Total Residents abroad	41,182	100.00	162,933	100.00
Total Residents in UE (excluding Spain)	33,244	80.73	143,619	88.15
- Germany	12,535	30.44	67,854	41.65
- Belgium	1,437	3.49	4,615	2.83
- France	4,714	11.45	9,785	6.01
- Italy	1,258	3.06	3,442	2.11
- Netherlands	2,235	5.43	10,748	6.60
- Portugal	622	1.51	1,919	1.18
- United Kingdom	8,863	21.52	37,252	22.86
Sweden	1,484	3.60	5,710	3.50
Other European countries	2,735	6.64	11,568	7.10
United States of America	1,977	4.80	4,159	2.55
Other countries	3,321	8.06	5,880	3.61

HOLIDAY DWELLING PRICE INDEX (HDPI)

June 2012

Provisional data

National general index and breakdown by rates

	Index	Interannual variation rate
TOTAL	115.64	3.09
Normal	116.91	1.65
Weekend	109.19	2.37
Tour-operators and travel agencies	115.99	4.42

National general index and breakdown by modalities

	Index	Interannual variation rate
TOTAL	115.64	3.09
Studio	114.45	2.97
Dwellings 2/4 bedplaces	114.34	2.88
Dwellings 4/6 bedplaces	120.66	3.76

Tourist Campsite Price Index (TCSPI)

June 2012

Provisional data

National general index and breakdown by rates

	Index	Interannual variation rate
TOTAL	146.23	0.40
Normal rate	145.88	-0.12
Special rate for stays up to one month	128.48	-0.52
Special rate for stays longer than one month	150.43	1.67

National general index and breakdown by categories

	Index	Interannual variation rate
TOTAL	146.23	0.40
Luxury and first	147.26	0.13
Second	146.00	0.47
Third	143.08	2.24

Rural Tourism Accommodation Price Index (RTAPI)

June 2012

Provisional data

General Autonomous Cities and Communities and national indices

	Index	Variation Rate interannual
TOTAL	130.18	-0.34
Andalucía	125.90	-4.28
Aragón	150.60	4.70
Asturias, Principado de	129.30	-1.94
Balears, Illes	126.87	2.39
Canarias	125.43	-1.77
Cantabria	141.35	-1.15
Castilla y León	127.47	-1.68
Castilla - La Mancha	120.91	-3.02
Cataluña	129.21	-3.14
Comunitat Valenciana	129.03	0.35
Extremadura	109.40	1.18
Galicia	126.63	1.83
Madrid, Comunidad de	134.55	-1.03
Murcia, Región de	128.50	-1.24
Navarra, Comunidad Foral de	184.38	3.53
País Vasco	130.28	-3.22
Rioja, La	122.75	-0.54
Ceuta	-	-
Melilla	-	-

National general index and breakdown by rates

	Index	Variation Rate interannual
TOTAL	130.18	-0.34
Normal	130.46	0.52
Weekend	132.03	-0.85

National general index and breakdown by rent modality

	Index	Variation Rate interannual
TOTAL	130.18	-0.34
Shared use (in case of per room rent modality)	124.19	1.44
Full use (rent of entire dwelling)	135.52	-1.87