

31 August 2018

Non-hotel Tourist Accommodation Occupancy Survey
July 2018. *Provisional data*

Overnight stays in non-hotel tourist accommodation decrease by 4.0% in July, as compared to the same month of 2017

Overnight stays in non-hotel tourist accommodation (apartments, tourist campsites, rural tourism accommodation and hostels) exceeded 19.9 million in July, 4.0% less than in the same month of 2017. Overnight stays by residents decreased by 2.6% and those by non-residents did so by 5.1%.

The average stay stood at 5.3 overnight stays per traveller.

During the first seven months of 2018, overnight stays decreased by 3.2% as compared to the same period of the previous year.

Travellers and overnight stays in collective non-hotel tourist accommodation during the month of July were:

July 2018	Arrivals	Overnight stays
Residents	2,098,150	9,063,534
EU Residents (excluding Spain)	1,448,948	9,850,835
Rest of the world	226,467	1,067,101
TOTAL	3,773,565	19,981,470

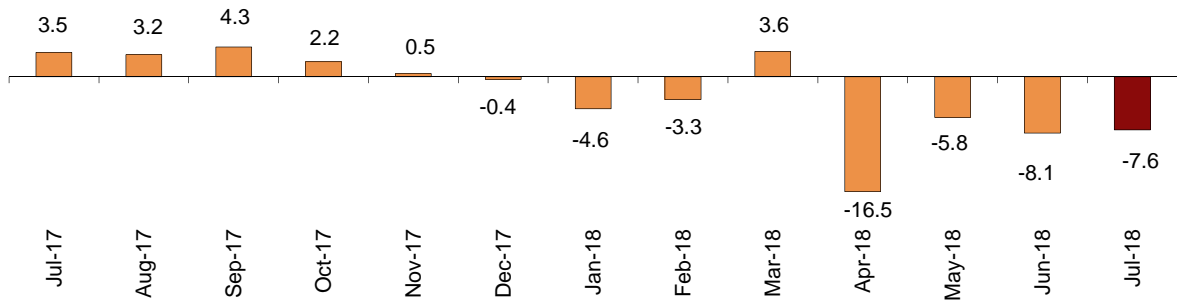
Holiday dwellings

Overnight stays in holiday dwellings decreased by 7.6% in July. Resident overnight stays decreased by 4.2% and non-resident overnight stays did so by 9.3%.

The average stay decreased by 3.8% as compared to July 2017, standing at 6.2 overnight stays per traveller.

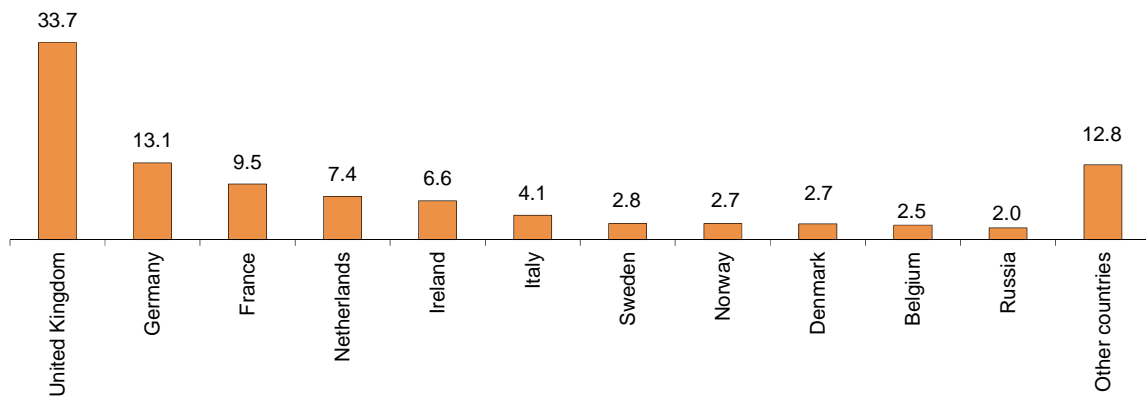
In July, 48.9% of the bed-places available for holiday dwellings were occupied, 8.5% less than in the same month of 2017. The weekend occupancy rate by bed-places stood at 52.3%, with a decrease of 6.7%.

Annual variation rates for overnight stays in holiday dwellings in %



Non-resident overnight stays in holiday dwellings represented 66.2% of the total. The United Kingdom was the main country of origin, with 2.2 million overnight stays, 13.8% less than in July 2017. The following country of origin was Germany, with 870,540 overnight stays, 5.3% less.

Distribution of non-resident overnight stays by main country of residence



Canarias was the preferred destination for holiday dwellings, with more than 2.7 million overnight stays and a decrease of 10.0% as compared to July 2017. Cantabria and Illes Balears reached the highest occupancy rate, with 76.0% of holiday dwellings offered.

By tourist areas, the island of Mallorca was the preferred destination, with more than one million overnight stays. The islands of Ibiza-Formentera registered the highest occupancy rate, with 83.0% of holiday dwellings offered.

The tourist sites with the greatest number of overnight stays in July were San Bartolomé de Tirajana, Arona and Tias.

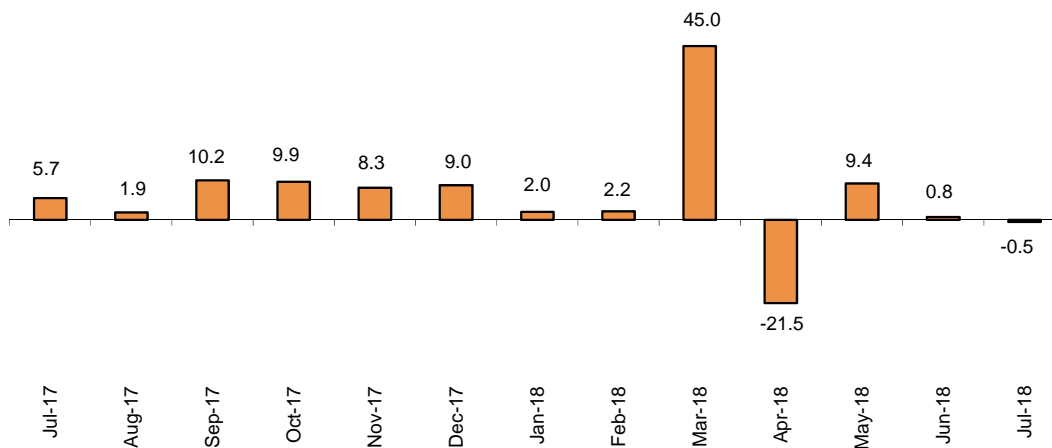
Tourist campsites

Overnight stays at tourist campsites registered a decrease of 0.5% in July as compared with the same month of the previous year. Overnight stays by residents dropped by 2.1%, whilst those by non-residents increased by 1.4%.

During the month of July, 47.9% of the offered pitches were occupied, 1.6% more than in the same month of 2017. The weekend occupancy rate by pitch reached 52.1%, with an annual increase of 1.2%.

46.1% of overnight stays on tourist campsites were made by non-residents. The Netherlands was the main country of origin, with 30.8% of overnight stays by non-residents, 4.8% more than in July 2017.

Annual variation rates for overnight stays in campsites in %



Cataluña was the preferred destination for tourist campsites, with 4.0 million overnight stays, representing an annual decrease of 1.4%. La Rioja reached the highest occupancy rate, with 65.8% of the pitches offered.

By tourist area, the Costa Brava was the preferred destination, with 2.0 million overnight stays. The Costa Blanca reached the highest occupancy rate, with 69.3% of pitches offered.

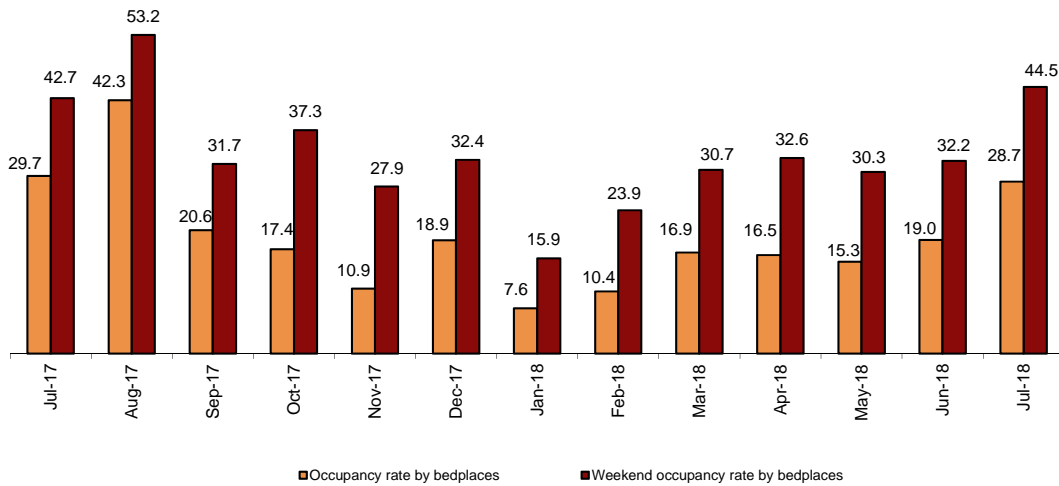
The tourist sites with more overnight stays were Torroella De Montgrí, Mont-Roig del Camp and Pals.

Rural tourism accommodation

Overnight stays at rural tourism accommodation remain unchanged compared to July 2017. Overnight stays by residents recorded an annual decrease of 5.3%, whilst those by non-residents grew by 11.5%.

In rural tourism accommodation, 28.7% of the bed-places were occupied, 3.2% less than in July 2017. The weekend occupancy rate stood at 44.5%, with an annual increase of 4.4%.

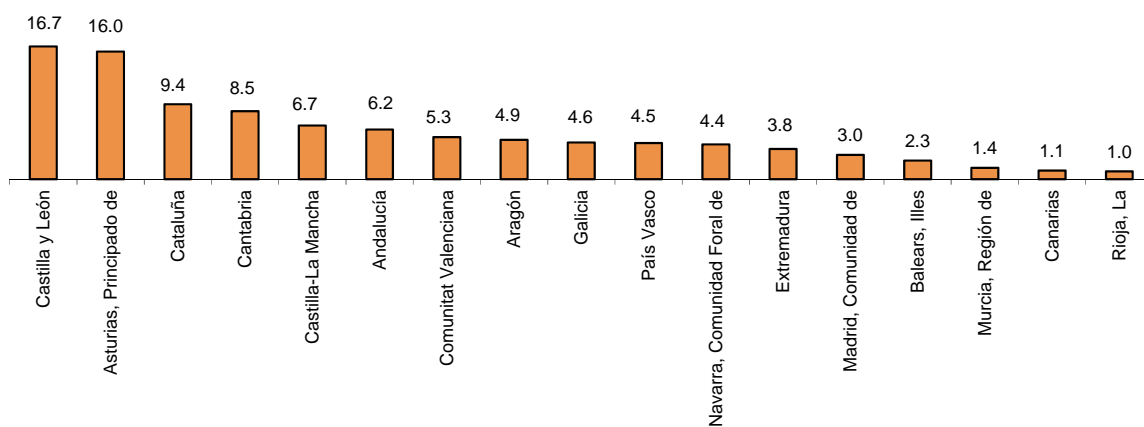
Occupancy rate and weekend occupancy rate per bed-places in rural tourism accommodation



By Autonomous Community, Andalucía was the preferred destination, with 189,651 overnight stays, 12.5% more than in July 2017. Illes Balears reached the highest occupancy rate, with 62.5% of the bed-places offered.

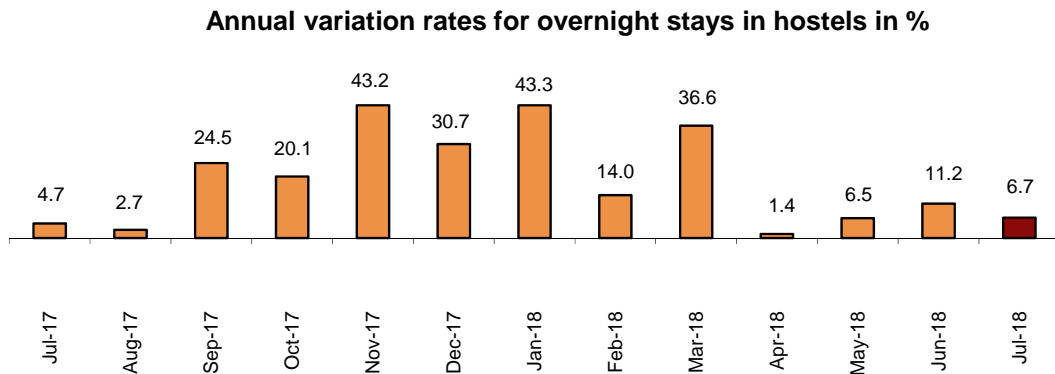
By tourist area, the island of Mallorca was the preferred destination, with 154,009 overnight stays. The island of Menorca registered the highest occupancy rate, with 72.1% of the bed-places offered.

Distribution of resident overnight stays in rural tourism accommodation by Autonomous Community in %

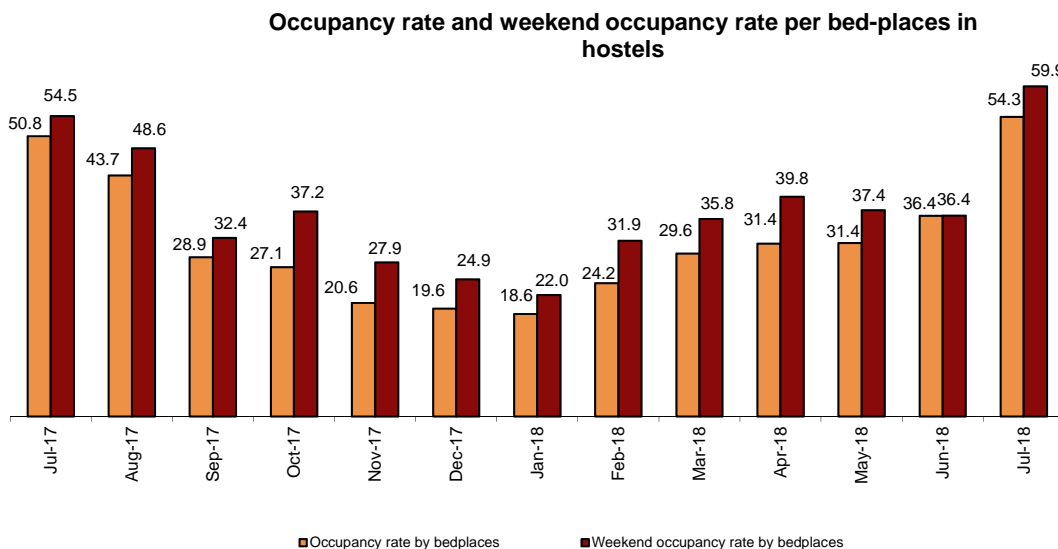


Youth Hostels

Overnight stays in hostels registered an annual increase of 6.7% in July. Overnight stays by residents increased 15.1%, while those by non-residents decreased by 17.1%.



Of the available bed-places, 54.3% were occupied, 6.9% more than in July 2017. The weekend occupancy rate reached 59.9%, with a 9.9% increase.



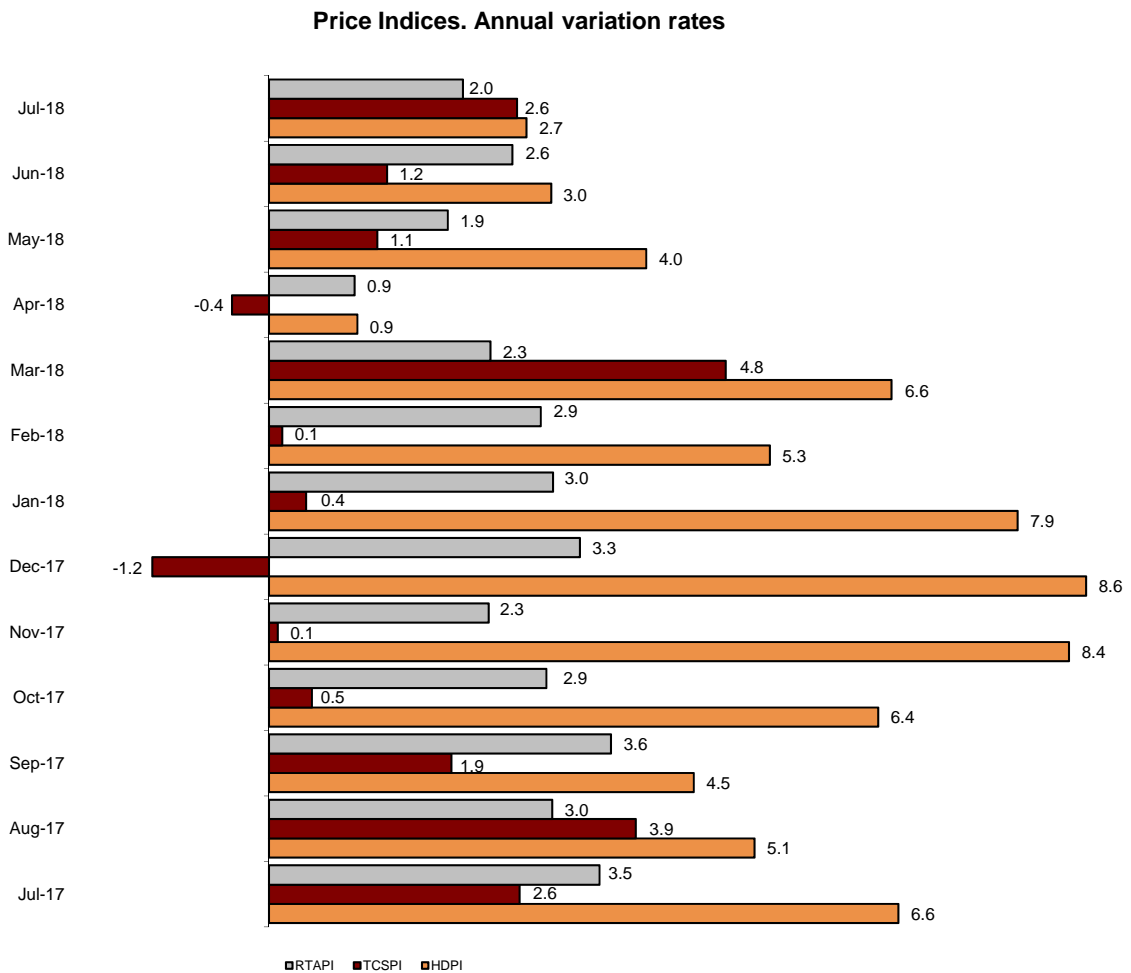
By Autonomous Community, Cataluña was the preferred destination, with 133,115 overnight stays, 8.1% less than in July 2017. Comunitat Valenciana reached the highest occupancy rate, with 62.3% of the bed-places offered.

Price indices

The Holiday Dwelling Price Index (HDPI) increased 2.7%, as compared to July 2017. The *normal* rate, which carried the greatest weight in the weighting structure this month (47.5%), rose 0.3%.

The Tourist Campsite Price Index (TCPI) increased by 2.6% in the annual rate. The *bungalow* rate, which carried the greatest weight in the weightings structure in July (50.7%), grew by 2.0% as compared with the same month of 2017.

The Rural Tourism Accommodation Price Index (RTAPI) registered a 2.0% increase in July. The *normal* rate, which accounted for 56.3% of the total weight, increased by 2.0% in the annual rate.



Evolution of travellers and overnight stays in all Spanish collective tourist accommodation

In July, overnight stays in Spanish collective tourist accommodation (hotels¹, holiday dwellings, tourist campsites, rural tourism accommodation and youth hostels) decreased by 2.8% in the annual rate. Resident overnight stays decreased by 1.7% and non-resident overnight stays did so by 3.4%.

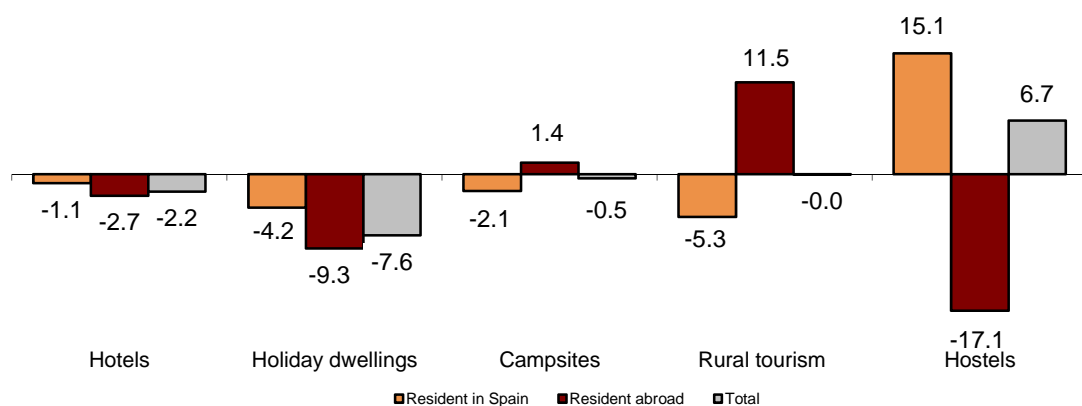
The average stay decreased 0.6%, and stood at 4.1 overnight stays per traveller.

Travellers and overnight stays in collective tourist accommodation were:

July 2018	Holiday dwellings	Campsites	Rural T.	Hostels	Non-hotel	Hotels	Total
Arrivals	1,609,810	1,560,189	483,186	120,380	3,773,565	11,686,283	15,459,848
Residents	663,422	999,307	354,754	80,667	2,098,150	5,373,549	7,471,699
Non-residents	946,388	560,882	128,432	39,713	1,675,415	6,312,735	7,988,150
Overnight stays	10,020,157	7,908,193	1,547,115	506,004	19,981,469	42,698,817	62,680,286
Residents	3,391,987	4,264,166	1,003,710	403,671	9,063,534	14,181,528	23,245,062
Non-residents	6,628,171	3,644,027	543,405	102,333	10,917,936	28,517,289	39,435,225

Of the total overnight stays made in collective tourist accommodation, 68% corresponded to hotels and 32% to non-hotel tourist accommodation.

Annual variation rates for overnight stays in collective tourist accommodation in %



The main countries of origin for all regulated tourist accommodation were the United Kingdom (with 24.9% of the total number of non-resident overnight stays), Germany (17.8%) and France (10.0%).

Cataluña was the preferred destination, with over 13.3 million overnight stays (5.7% less than in July 2017). It was followed by Illes Balears, with 12.9 million (a decrease of 0.1%) and Canarias, with 9.2 million, (an annual decrease of 6.1%).

For further information see INEbase: www.ine.es/en/ Twitter: @es_ine

All press releases at: www.ine.es/en/prensa/prensa_en.htm

Press office: Telephone numbers: (+34) 91 583 93 63 /94 08 – gprensa@ine.es

Information Area: Telephone number: (+34) 91 583 91 00 – www.ine.es/infoine/?L=1

¹ The press release corresponding to Hotel Tourism Short-Term Trends was published on 24 August.

Tourist Accommodation Occupancy Survey (Holiday Dwellings)

June 2018

Provisional data

1. Travellers, overnight stays and average stay by Autonomous Cities and Communities

Autonomous Cities and Communities	Travellers			Overnight stays			Average stay
	Total	Residents in Spain	Residents abroad	Total	Residents in Spain	Residents abroad	
TOTAL	1,328,639	514,780	813,859	7,098,471	1,882,164	5,216,307	5.34
Andalucía	251,820	119,796	132,024	1,004,447	351,259	653,188	3.99
Aragón	14,558	11,856	2,702	40,702	31,416	9,286	2.80
Asturias, Principado de	5,941	5,223	718	18,098	16,098	2,000	3.05
Balears, Illes	254,297	40,409	213,888	1,599,148	167,514	1,431,634	6.29
Canarias	303,571	74,398	229,174	2,174,304	325,561	1,848,742	7.16
Cantabria	20,218	16,102	4,117	56,846	43,212	13,635	2.81
Castilla y León	17,587	14,274	3,314	36,793	29,996	6,797	2.09
Castilla - La Mancha	10,808	10,129	679	30,727	26,572	4,155	2.84
Cataluña	149,394	63,875	85,519	757,123	262,007	495,115	5.07
Comunitat Valenciana	188,364	92,703	95,662	991,707	404,272	587,435	5.26
Extremadura	7,065	5,759	1,306	12,159	9,792	2,367	1.72
Galicia	12,282	9,439	2,843	33,889	26,974	6,915	2.76
Madrid, Comunidad de	48,470	21,678	26,792	159,820	70,012	89,808	3.30
Murcia, Región de	17,250	13,103	4,147	99,886	71,105	28,781	5.79
Navarra, Comunidad Foral de	9,382	6,486	2,896	25,376	16,901	8,474	2.70
País Vasco	14,585	6,697	7,888	49,518	22,256	27,262	3.40
Rioja, La	3,044	2,853	190	7,928	7,217	711	2.60
Ceuta	-	-	-	-	-	-	-
Melilla	-	-	-	-	-	-	-
Annual rate	-3.42	1.42	-6.26	-8.05	-5.20	-9.04	-4.79
Cumulative annual rate	-3.99	-3.48	-4.25	-6.34	-5.46	-6.58	-2.45

2. Capacity, occupancy and number of staff by Autonomous Cities and Communities

Autonomous Cities and Communities	Capacity		Level of occupancy				Employed personnel
	Estimated bedplaces	Estimated Holiday dwelling	Per bedplaces	Per bedplaces at weekend	Per Holiday dwelling	Per Holiday dwelling at weekend	
TOTAL	619,408	158,575	37.91	41.22	57.96	61.46	33,406
Andalucía	85,993	21,502	38.79	44.78	56.04	63.10	5,216
Aragón	7,078	1,659	19.04	29.27	27.40	38.34	547
Asturias, Principado de	4,635	1,228	13.00	19.00	16.43	22.54	325
Balears, Illes	81,963	26,272	63.94	64.22	81.01	81.26	7,131
Canarias	142,816	43,399	50.27	51.92	70.52	71.80	10,935
Cantabria	6,706	1,742	28.19	36.88	40.83	52.48	469
Castilla y León	6,314	1,431	19.40	34.32	29.17	43.23	556
Castilla - La Mancha	5,638	1,370	18.15	31.43	28.79	42.33	432
Cataluña	84,576	17,215	29.82	34.10	47.42	52.35	2,143
Comunitat Valenciana	157,276	32,776	20.98	23.30	36.36	39.82	3,311
Extremadura	2,025	474	20.00	32.22	32.02	46.16	175
Galicia	4,889	1,290	22.97	27.40	34.56	39.76	328
Madrid, Comunidad de	10,442	3,929	50.80	54.89	76.06	78.50	598
Murcia, Región de	10,666	2,357	31.21	35.78	47.66	54.19	318
Navarra, Comunidad Foral de	2,651	528	31.58	41.06	48.01	56.33	565
País Vasco	4,190	1,068	39.30	47.02	60.43	67.81	253
Rioja, La	1,552	334	17.00	32.38	27.47	47.59	104
Ceuta	-	-	-	-	-	-	-
Melilla	-	-	-	-	-	-	-
Annual rate	-0.84	-1.07	-7.09	-5.81	-4.31	-3.55	-1.40
Cumulative annual rate	-0.36	1.04	-5.85	-6.09	-6.06	-6.33	1.37

3. Travellers, overnight stays, capacity, occupancy, total number of staff with greater number of overnight stays *

Provinces	Travellers		Overnight stays			Capacity		Level of occupancy			Employed personnel
	Residents in Spain	Residents abroad	Residents in Spain	Residents abroad	Average stay	Estimated bed-places	Estimated holiday dwelling	Per bed-places	Per Holiday dwelling	Per Holiday dwelling at weekend	
Palmas, Las	43,440	144,581	185,838	1,191,345	7.32	89,477	26,977	50.74	72.70	73.82	6,595
Santa Cruz de Tenerife	30,957	84,593	139,723	657,397	6.90	53,340	16,421	49.46	66.93	68.46	4,340
Alicante\Alacant	40,758	73,989	190,170	478,382	5.83	96,513	20,800	23.07	38.53	41.10	2,232
Málaga	34,405	91,175	103,125	531,143	5.05	45,804	11,512	46.05	65.63	69.20	2,975
Tarragona	26,164	29,086	100,025	210,999	5.63	26,479	5,318	39.13	55.23	60.68	797
Girona	25,323	31,045	77,608	180,789	4.58	45,291	8,304	18.99	33.62	38.72	727
Castellón\Castelló	29,357	4,857	137,585	42,703	5.27	31,753	5,935	18.87	34.45	39.93	511
Barcelona	9,737	25,226	77,480	102,460	5.15	9,897	2,940	60.45	79.60	82.85	534
Valencia\València	22,588	16,815	76,516	66,350	3.63	29,011	6,041	16.41	30.84	35.34	567
Almería	20,316	4,619	74,322	33,401	4.32	12,819	2,881	27.93	45.51	56.49	439
Sevilla	17,219	19,431	36,561	47,446	2.29	6,210	1,828	44.67	65.28	75.93	483
Cádiz	14,991	5,774	43,269	16,875	2.90	6,297	1,593	31.70	46.74	59.24	423
Granada	13,214	8,464	34,552	16,972	2.38	5,832	1,510	29.28	38.52	50.23	522
Huelva	13,249	996	45,973	4,141	3.52	5,311	1,217	31.45	39.58	51.38	134
Gipúzkoa	3,203	6,338	8,984	22,118	3.26	2,536	598	40.80	55.99	62.97	152

4. Travellers, overnight stays, capacity, occupancy, total number of staff from tourist areas with greater number of overnight stays

Tourist Areas	Travellers		Overnight stays			Capacity		Level of occupancy			Employed personnel
	Residents in Spain	Residents abroad	Residents in Spain	Residents abroad	Average stay	Estimated bed-places	Estimated holiday dwelling	Per bed-places	Per Holiday dwelling	Per Holiday dwelling at weekend	
Isla de Mallorca	10,528	114,095	38,993	822,559	6.91	40,722	13,459	69.13	83.43	83.57	3,617
Isla de Tenerife	24,643	81,222	115,854	627,809	7.02	47,464	14,465	51.85	70.03	71.22	3,829
Costa Blanca	35,811	69,689	178,011	462,985	6.08	92,536	20,038	23.07	38.62	40.79	2,140
Isla de Gran Canaria	25,729	65,442	97,416	518,197	6.75	43,583	13,231	46.85	66.60	69.45	3,008
Costa del Sol	27,777	85,602	89,982	513,319	5.32	42,611	10,748	47.01	66.36	69.47	2,822
Isla de Lanzarote	10,131	58,360	51,256	497,626	8.01	31,954	9,436	56.39	79.40	78.67	2,557
Islas de Ibiza-Formentera	14,127	68,424	53,739	383,285	5.29	22,656	7,697	63.35	79.61	80.43	2,366
Costa Daurada	23,617	28,304	96,074	209,398	5.88	25,760	5,163	39.51	56.04	60.92	774
Isla de Menorca	15,754	31,369	74,782	225,791	6.38	18,585	5,116	53.35	76.77	76.49	1,147
Costa Brava	22,422	30,255	71,117	178,798	4.74	43,951	8,027	18.95	33.85	38.26	642

5. Travellers, overnight stays, capacity, occupancy, total number of staff from tourist sites with greater number at overnights stays

Tourist sites	Travellers		Overnight stays			Capacity		Level of occupancy			Employed personnel
	Residents in Spain	Residents abroad	Residents in Spain	Residents abroad	Average stay	Estimated bed-places	Estimated holiday dwelling	Per bed-places	Per Holiday dwelling	Per Holiday dwelling at weekend	
San Bartolomé de Tirajana	18,506	38,879	67,310	324,785	6.83	28,534	8,900	45.50	64.59	67.94	1,876
Arona	5,997	39,520	27,563	311,954	7.46	19,914	6,340	56.54	71.65	72.38	1,642
Tias	4,693	32,401	20,749	269,671	7.83	16,213	4,983	58.64	79.36	78.34	1,109
Benidorm	8,256	38,266	42,103	214,965	5.53	23,835	5,663	35.95	67.41	71.46	698
Alcúdia	5,018	29,254	13,950	206,949	6.45	8,982	3,203	80.83	84.37	84.14	885
Mogán	4,131	25,512	20,772	187,742	7.03	13,939	3,852	49.75	72.75	73.81	1,017
Calvià	684	23,113	3,488	203,222	8.69	9,594	3,246	71.23	89.13	89.58	789
Adeje	2,468	24,060	11,053	182,101	7.28	14,423	4,064	44.27	68.12	67.81	964
Ciudadella de Menorca	8,328	18,770	37,150	150,871	6.94	9,902	3,040	62.23	80.98	80.55	777
Mijas	2,213	18,488	7,736	149,646	7.60	10,720	1,697	48.89	60.31	59.52	489

* Provinces belonging to uniprovincial Autonomous Communities have not been included because they are reflected in previous tables.

6. Travellers and overnight stays by countries of residence

Countries	Travellers		Overnight stays	
	Total	%	Total	%
TOTAL	1,328,639	100.00	7,098,471	100.00
Residents in Spain	514,780	38.74	1,882,164	26.52
Residents abroad	813,859	61.26	5,216,307	73.48
Total residents abroad	813,859	100.00	5,216,307	100.00
Total residents in E.U (excluding Spain)	684,057	84.05	4,601,696	88.22
- Germany	85,593	10.52	656,311	12.58
- Austria	3,849	0.47	16,910	0.32
- Belgium	10,924	1.34	63,203	1.21
-Denmark	12,343	1.52	81,230	1.56
- Finland	7,142	0.88	44,301	0.85
- France	51,381	6.31	263,252	5.05
- Greece	1,848	0.23	11,635	0.22
- Ireland	54,837	6.74	406,388	7.79
- Italy	39,772	4.89	186,547	3.58
- Luxembourg	396	0.05	2,692	0.05
- Netherlands	43,756	5.38	326,815	6.27
- Poland	12,270	1.51	78,563	1.51
- Portugal	9,650	1.19	36,581	0.70
- United Kingdom	305,442	37.53	2,149,519	41.21
- Czech Republic	4,966	0.61	27,556	0.53
- Sweden	25,632	3.15	175,701	3.37
- Other EU countries	14,256	1.75	74,491	1.43
Norway	13,185	1.62	81,904	1.57
Russia	17,488	2.15	134,714	2.58
Switzerland	8,082	0.99	44,276	0.85
Other european countries	11,394	1.40	75,095	1.44
United States of America	25,164	3.09	81,073	1.55
Rest of America	22,967	2.82	81,228	1.56
African countries	4,722	0.58	20,637	0.40
Other countries	26,801	3.29	95,683	1.83

Tourist Accommodation Occupancy Survey Campsite Occupancy Survey (COS)

June 2018

Provisional data

1. Travellers, overnight stays and average stay by category of establishment

Category	Travellers			Overnight stays			Average stay
	Total	Residents	Residents	Total	Residents	Residents	
		in Spain	abroad		in Spain	abroad	
TOTAL	961,856	665,155	296,701	3,887,014	2,128,183	1,758,831	4.04
Luxury and first-class	449,343	297,506	151,837	1,942,579	1,020,465	922,114	4.32
Second-class	438,786	307,110	131,675	1,734,036	948,260	785,776	3.95
Third-class	73,727	60,538	13,189	210,399	159,457	50,941	2.85
Annual rate	-1.69	-4.00	3.91	0.76	0.13	1.54	2.49
Cumulative annual rate	-2.18	-5.88	5.58	2.22	-1.23	5.28	4.51

2. Open establishments, capacity, occupancy and number of staff by category of establishments

Category	Estimated open establishments	Capacity		Occupied pitches	Occupancy rate per pitch	Weekend occupancy rate	Employed personnel
		Estimated bedplaces	Estimated pitches				
TOTAL	1,055	715,412	218,276	2,414,212	36.87	40.41	9,705
Luxury and first-class	286	317,551	93,234	1,038,584	37.13	40.78	4,720
Second-class	583	332,622	104,312	1,164,022	37.20	40.73	4,199
Third-class	186	65,240	20,730	211,607	34.03	37.25	786
Annual rate	-0.32	0.43	0.31	-0.15	-0.46	-1.98	0.35
Cumulative annual rate	-0.61	0.06	-0.49	0.34	0.74	-1.20	2.96

3. Travellers, overnight stays and average stay by Autonomous Cities and Communities

Autonomous cities and communities	Travellers			Overnight stays			Average stay
	Total	Residents	Residents	Total	Residents	Residents	
		in Spain	abroad		in Spain	abroad	
TOTAL	961,856	665,155	296,701	3,887,014	2,128,183	1,758,831	4.04
Andalucía	114,354	84,412	29,942	353,457	242,385	111,072	3.09
Aragón	36,833	20,428	16,405	83,330	44,974	38,356	2.26
Asturias, Principado de	16,164	10,264	5,900	60,064	47,063	13,001	3.72
Balears, Illes	5,842	2,813	3,029	34,138	12,998	21,140	5.84
Canarias	3,373	3,183	190	9,736	6,481	3,255	2.89
Cantabria	29,787	19,930	9,858	123,236	94,406	28,830	4.14
Castilla y León	35,351	18,675	16,676	83,689	57,354	26,335	2.37
Castilla - La Mancha	8,650	6,743	1,907	16,993	13,093	3,900	1.96
Cataluña	466,512	324,403	142,109	2,037,305	1,023,910	1,013,395	4.37
Comunitat Valenciana	111,198	81,834	29,364	706,364	330,229	376,135	6.35
Extremadura	11,029	7,631	3,398	26,358	17,748	8,610	2.39
Galicia	25,223	18,028	7,195	83,279	68,248	15,031	3.30
Madrid, Comunidad de	28,593	23,801	4,792	81,919	63,064	18,855	2.86
Murcia, Región de	12,628	9,541	3,087	58,762	26,868	31,894	4.65
Navarra, Comunidad Foral de	18,420	13,659	4,761	41,906	34,439	7,467	2.28
País Vasco	23,803	9,842	13,961	56,399	24,524	31,875	2.37
Rioja, La	14,097	9,969	4,128	30,079	20,398	9,682	2.13
Ceuta	-	-	-	-	-	-	-
Melilla	-	-	-	-	-	-	-

4. Open establishments, capacity, occupancy and number of staff by autonomous cities and communities

Autonomous cities and communities	Estimated open establishments	Capacity		Occupied pitches	Occupancy rate per pitch	Weekend occupancy rate	Employed personnel
		Estimated bedplaces	Estimated pitches				
TOTAL	1,055	715,412	218,276	2,414,212	36.87	40.41	9,705
Andalucía	134	78,901	25,577	190,524	24.83	29.95	1,063
Aragón	87	30,376	9,265	65,623	23.61	27.99	449
Asturias, Principado de	42	23,516	7,202	50,312	23.28	23.55	221
Balears, Illes	8	3,177	1,398	14,055	33.51	31.78	106
Canarias	7	7,180	1,776	8,008	15.03	19.32	24
Cantabria	41	32,933	10,398	114,131	36.59	35.65	250
Castilla y León	82	34,900	11,236	76,718	22.76	26.11	343
Castilla - La Mancha	24	8,980	2,788	18,646	22.29	31.03	99
Cataluña	296	307,139	89,745	1,148,718	42.67	46.40	4,626
Comunitat Valenciana	126	78,432	24,737	386,771	52.12	55.51	1,174
Extremadura	25	9,894	3,230	24,953	25.75	33.06	156
Galicia	90	33,066	10,376	61,135	19.64	23.22	366
Madrid, Comunidad de	21	18,144	6,135	91,601	49.77	48.31	242
Murcia, Región de	16	14,590	4,804	39,128	27.15	32.65	186
Navarra, Comunidad Foral de	25	14,753	3,890	38,058	32.61	39.24	175
País Vasco	22	11,341	3,259	37,135	37.98	41.20	150
Rioja, La	9	8,091	2,459	48,696	66.02	62.99	75
Ceuta	-	-	-	-	-	-	-
Melilla	-	-	-	-	-	-	-

5. Travellers and overnight stays, average stay, capacity, occupancy and number of staff by provinces with the greatest number of overnight stays*

Provinces	Travellers		Overnight stays		Average stay	Estimated open establishments	Estimated pitches	Occupancy rate per pitch	Employed personnel
	Residents in Spain	Residents abroad	Residents in Spain	Residents abroad					
	Girona	120,941	70,669	319,714					
Tarragona	120,435	40,146	473,249	321,251	4.95	63	25,055	50.32	1,319
Alicante\Alacant	37,072	13,971	166,711	259,531	8.35	49	11,356	62.08	496
Barcelona	70,462	27,737	195,408	122,025	3.23	61	15,134	50.61	627
Castellón\Castelló	19,445	8,862	84,303	75,463	5.64	41	6,861	42.81	356
Valencia\València	25,316	6,531	79,214	41,142	3.78	36	6,520	44.56	323
Cádiz	27,623	6,625	83,576	22,139	3.09	27	6,767	23.53	292
Málaga	15,939	6,740	49,191	43,803	4.10	28	4,889	36.52	246
Huelva	17,297	3,990	53,007	11,865	3.05	9	4,494	25.90	122
Huesca	15,878	10,396	33,673	24,938	2.23	57	6,743	26.22	335
Pontevedra	13,857	2,742	43,342	6,040	2.97	40	5,761	21.15	191
Lleida	12,565	3,557	35,539	7,353	2.66	46	6,791	32.20	183
Gipuzkoa	7,118	10,131	15,492	24,924	2.34	12	2,003	33.68	90
Almería	8,825	3,354	24,378	12,608	3.04	19	2,766	23.40	120
Coruña, A	3,364	3,158	23,438	6,985	4.66	35	3,654	19.29	124

* Provinces belonging to uniprovincial Autonomous Communities have not been included because they are reflected in previous tables.

6. Travellers, overnight stays, average stay, open establishments, capacity, occupancy and number of staff from tourist areas with the greatest number of overnight stays

Tourist areas	Travellers		Overnight stays		Average stay	Estimated open establishments	Estimated pitches	Occupancy rate per pitch	Employed personnel
	Residents in	Residents abroad	Residents in	Residents abroad					
	Spain		Spain						
Costa Brava	107,366	69,694	292,526	559,281	4.81	100	39,748	37.03	2,374
Costa Daurada	109,252	36,150	421,382	304,416	4.99	49	22,105	52.12	1,183
Costa Blanca	29,406	12,740	124,977	238,189	8.62	41	9,054	66.25	424
Costa Barcelona	56,091	27,414	167,596	121,147	3.46	40	12,471	51.90	516
pn Aiguamolls de l'Empordà	14,439	21,320	73,478	185,702	7.25	22	10,196	40.11	686
Costa de Castellón	17,287	7,884	76,797	70,718	5.86	32	6,073	44.24	331
Costa de la Luz (Cádiz)	26,575	6,333	81,817	21,536	3.14	24	6,170	24.48	270
Costa Valencia	17,446	4,448	59,083	34,690	4.28	19	4,443	49.48	215
Pirineus	33,101	4,126	74,536	9,789	2.27	76	10,567	36.57	344
Costa del Sol	14,055	4,638	45,209	38,956	4.50	14	3,663	42.73	191
Terres de l'Ebre	11,183	3,996	51,868	16,835	4.53	14	2,950	36.84	136
Costa de la Luz (Huelva)	16,610	3,366	51,769	9,732	3.08	7	4,349	25.29	114
Pirineo Aragonés	15,652	10,038	33,277	24,375	2.24	52	6,455	25.27	326
Rías Baixas	14,868	3,839	48,450	8,169	3.03	51	7,365	17.87	239
Costa Verde	9,128	4,842	44,200	10,951	3.95	34	6,124	25.85	184

7. Travellers, overnight stays, average stay, open establishments, capacity, occupancy and number of staff from tourist sites with the greatest number at overnights stays

Tourist sites	Travellers		Overnight stays		Average stay	Estimated open establishments	Estimated pitches	Occupancy rate per pitch	Employed personnel
	Residents in	Residents abroad	Residents in	Residents abroad					
	Spain		Spain						
Benidorm	5,020	5,020	15,324	164,375	17.90	11	4,129	80.05	141
Torroella de Montgrí	9,737	15,817	39,188	121,537	6.29	9	4,738	48.15	431
Mont-roig del Camp	12,410	10,599	67,322	87,605	6.73	6	4,272	52.40	267
Salou	13,091	8,204	57,984	83,523	6.65	3	2,189	69.65	133
Tarragona	16,902	5,775	89,786	39,629	5.71	6	2,957	57.91	225
Sant Pere Pescador	6,760	9,695	20,660	74,311	5.77	7	3,656	37.51	322
Castelló d'Empúries	4,665	5,360	30,278	62,716	9.28	5	3,436	46.67	212
Blanes	15,609	6,049	37,920	53,765	4.23	10	3,599	58.91	253
Calonge	10,216	5,910	22,987	59,447	5.11	5	3,318	28.57	178
Cambrils	15,379	3,829	45,738	26,120	3.74	6	3,260	48.66	114
Vilanova i La Geltrú	11,120	7,000	18,315	46,753	3.59	3	2,640	46.13	95
Roda de Berà	9,138	2,125	38,929	21,477	5.36	3	2,004	54.68	79

8. Travellers and overnight stays by countries of residence

Countries	Travellers		Overnight stays	
	Total	%	Total	%
TOTAL	961,856	100.00	3,887,014	100.00
Residents in Spain	665,155	69.15	2,128,183	54.75
Residents abroad	296,701	30.85	1,758,831	45.25
TOTAL residents abroad	296,701	100.00	1,758,831	100.00
TOTAL residents in E.U. (excluding Spain)	274,442	92.50	1,680,306	95.54
- Germany	45,891	15.47	245,511	13.96
- Austria	2,266	0.76	6,189	0.35
- Belgium	14,865	5.01	99,765	5.67
- Denmark	1,708	0.58	11,142	0.63
- Finland	832	0.28	3,086	0.18
- France	67,596	22.78	286,787	16.31
- Greece	150	0.05	545	0.03
- Ireland	20,017	6.75	143,289	8.15
- Italy	7,844	2.64	22,776	1.29
- Luxembourg	333	0.11	1,887	0.11
- Netherlands	55,021	18.54	416,786	23.70
- Poland	2,019	0.68	14,031	0.80
- Portugal	5,468	1.84	14,710	0.84
- United Kingdom	44,703	15.07	391,352	22.25
- Czech Republic	1,291	0.43	3,721	0.21
- Sweden	1,727	0.58	9,743	0.55
- Other EU countries	2,712	0.91	8,986	0.51
Norway	436	0.15	3,570	0.20
Russia	742	0.25	4,248	0.24
Switzerland	7,368	2.48	29,214	1.66
Other European countries	3,686	1.24	13,112	0.75
United States of America	1,463	0.49	3,660	0.21
Rest of America	2,388	0.80	5,952	0.34
African countries	322	0.11	1,064	0.06
Other countries	5,854	1.97	17,703	1.01

**Tourist accommodation occupancy survey
(Rural tourist accommodation)**

June 2018

Provisional data

1. Number of travellers, overnight stays and average stay by Autonomous City and Community

Autonomous Communities	Number of travellers			Number of overnight stays			Average stay
	Total	Residents In Spain	Residents abroad	Total	Residents In Spain	Residents abroad	
TOTAL	407,572	309,243	98,329	973,621	636,897	336,724	2.39
Andalucía	34,025	19,344	14,681	126,783	43,947	82,836	3.73
Aragón	16,001	13,792	2,209	40,820	30,607	10,213	2.55
Asturias, Principado de	23,234	19,518	3,717	60,472	49,259	11,214	2.60
Balears, Illes	43,935	6,252	37,683	160,946	17,976	142,970	3.66
Canarias	4,740	2,738	2,002	18,903	7,264	11,639	3.99
Cantabria	23,083	19,577	3,506	46,950	40,324	6,627	2.03
Castilla y León	77,583	68,494	9,090	143,008	129,733	13,276	1.84
Castilla-La Mancha	28,147	25,918	2,229	59,415	54,423	4,992	2.11
Cataluña	50,198	44,994	5,205	102,580	87,056	15,524	2.04
Comunitat Valenciana	18,769	17,040	1,729	44,478	38,230	6,248	2.37
Extremadura	16,549	15,012	1,537	33,900	30,757	3,143	2.05
Galicia	23,707	15,285	8,421	38,079	24,917	13,162	1.61
Madrid, Comunidad de	14,347	13,492	854	24,771	23,338	1,433	1.73
Murcia, Región de	5,304	4,500	804	10,621	8,629	1,991	2.00
Navarra, Comunidad Foral de	9,547	8,753	795	22,194	19,729	2,465	2.32
País Vasco	14,723	11,142	3,581	32,664	24,254	8,410	2.22
Rioja, La	3,679	3,393	286	7,035	6,454	581	1.91
Ceuta	-	-	-	-	-	-	-
Melilla	-	-	-	-	-	-	-
Annual rate	8.17	7.86	9.13	8.13	7.29	9.76	-0.04
Cumulative annual rate	4.69	2.67	13.53	4.05	1.13	11.82	-0.61

2. Open rural establishments, bed-places, occupancy rates and employed personnel by Autonomous City and Community

Autonomous Communities	Estimated open rural establishments	Estimated bed-places	Occupancy rate			Employed personnel
			Of bed-places	Of bed-places at weekend	Of bedrooms	
TOTAL	17,442	170,330	18.96	32.18	23.04	26,451
Andalucía	2,336	19,532	21.54	26.90	29.64	3,494
Aragón	1,222	9,716	13.90	27.21	16.41	1,374
Asturias, Principado de	1,426	14,080	14.29	21.30	17.36	1,914
Balears, Illes	492	9,531	55.83	51.05	63.78	2,978
Canarias	533	3,230	19.47	21.69	30.01	748
Cantabria	445	7,347	21.17	37.93	25.86	751
Castilla y León	3,690	32,728	14.53	31.73	17.20	4,972
Castilla-La Mancha	1,716	15,051	13.11	31.17	14.86	2,130
Cataluña	2,034	18,239	18.68	43.19	21.99	2,811
Comunitat Valenciana	856	10,556	13.90	19.80	16.71	1,305
Extremadura	593	7,215	15.63	29.12	20.10	868
Galicia	521	6,643	19.02	28.04	22.10	916
Madrid, Comunidad de	235	3,749	21.94	46.90	30.58	546
Murcia, Región de	158	2,392	14.77	35.14	19.30	247
Navarra, Comunidad Foral de	695	5,098	14.49	31.61	17.96	844
País Vasco	370	4,092	26.41	44.54	30.58	424
Rioja, La	119	1,132	20.44	46.09	21.62	128
Ceuta	-	-	-	-	-	-
Melilla	-	-	-	-	-	-
Annual rate	2.77	4.05	4.03	-3.24	4.43	6.13
Cumulative annual rate	1.39	2.96	0.83	-2.71	-0.20	6.17

3. Number of travellers, overnight stays and average stay in Provinces with the greatest number of overnight stays¹

Provinces	Number of travellers			Number of overnight stays			Average stay
	Total	Residents In Spain	Residents abroad	Total	Residents In Spain	Residents abroad	
Málaga	14,066	3,959	10,108	79,690	12,271	67,419	5.67
Girona	21,529	19,174	2,355	46,825	38,294	8,531	2.17
Barcelona	16,023	14,284	1,739	31,461	27,756	3,705	1.96
Ávila	14,573	14,211	362	28,994	28,349	646	1.99
Cáceres	13,654	12,444	1,210	28,132	25,693	2,439	2.06
Huesca	9,474	7,767	1,707	26,229	18,583	7,646	2.77
Valencia\València	10,576	10,088	488	24,974	23,902	1,072	2.36
Segovia	10,918	10,485	432	20,871	19,636	1,235	1.91
Burgos	11,268	9,192	2,075	20,608	18,371	2,237	1.83
Gipuzkoa	7,952	5,889	2,063	18,667	13,708	4,960	2.35
León	11,102	7,583	3,519	16,531	12,776	3,755	1.49
Soria	7,681	7,229	453	15,893	15,101	791	2.07
Coruña, A	9,446	5,255	4,191	14,746	8,277	6,469	1.56
Cuenca	7,068	5,707	1,361	14,593	11,883	2,710	2.06
Toledo	7,503	7,007	496	14,547	13,572	975	1.94

4. Open rural establishments, bed-places, occupancy rates and employed personnel in Provinces with the highest number of overnight stays¹

Provinces	Estimated open rural establishments	Estimated bed-places	Occupancy rate			Employed personnel
			Of bed-places	Of bed-places at weekend	Of bedrooms	
Málaga	1,307	8,913	29.70	30.06	41.94	1,813
Girona	667	6,844	22.72	50.80	27.30	798
Barcelona	540	4,745	22.02	51.70	25.32	954
Ávila	829	6,459	14.92	34.84	18.00	1,015
Cáceres	482	5,876	15.93	30.03	20.48	695
Huesca	684	5,218	16.61	29.76	19.50	785
Valencia\València	252	4,212	19.44	21.21	18.76	406
Segovia	451	4,131	16.77	39.86	19.18	600
Burgos	424	4,207	16.31	34.68	18.99	507
Gipuzkoa	169	1,937	31.83	49.80	37.60	196
León	476	3,813	14.42	25.47	17.57	670
Soria	350	3,348	15.76	35.45	16.67	467
Coruña, A	150	1,895	25.79	30.93	29.45	290
Cuenca	338	3,357	14.44	34.34	16.31	375
Toledo	228	2,474	19.47	48.11	20.58	301

¹ Provinces belonging to uniprovincial Autonomous Communities have not been included because they are reflected in previous tables.

5. Number of travellers, overnight stays, average stay, capacity and occupancy rates in areas with the highest number of overnight stays

Areas	Number of travellers		Number of overnight stays		Average stay	Capacity		Occupancy rate		
	Residents In Spain	Residents abroad	Residents In Spain	Residents abroad		Estimated open establishments	Estimated rural bed-places	Of bed-places	Of bed-places at weekend	Of bedrooms
Isla de Mallorca	3,639	31,803	9,893	121,511	3.71	408	7,897	54.96	48.00	63.52
Costa Brava	13,212	1,998	26,155	7,488	2.21	423	4,413	25.34	56.58	29.64
Pirineus	15,090	902	30,028	2,786	2.05	787	6,600	16.51	40.81	19.69
P.Natural Sierras de Tejeda, Almijara y Alhama	521	4,653	1,208	27,729	5.59	437	2,690	35.76	30.68	52.36
Pirineo Aragonés	6,913	1,739	15,734	7,901	2.73	646	4,946	15.85	28.26	19.17
Costa Verde	7,415	1,141	20,250	2,718	2.68	486	5,450	14.03	22.35	17.33
Extremadura Norte	9,927	511	21,165	1,366	2.16	332	4,062	18.46	35.01	24.34
P.Nacional Picos de Europa	6,533	2,033	16,201	4,967	2.47	315	2,940	23.94	28.48	28.77
Pirineo Navarro	7,075	678	16,495	2,007	2.39	586	4,119	14.94	31.19	17.53
Costa del Sol	1,102	1,734	3,811	14,612	6.50	244	1,571	38.93	39.83	50.48
Isla de Menorca	1,953	3,339	6,233	11,391	3.33	50	926	63.06	71.34	67.84
Parque Nacional Sierra de Guadarram	6,729	623	10,900	1,175	1.64	126	1,809	22.17	48.78	27.09
Islas de Ibiza-Formentera	660	2,541	1,850	10,068	3.72	35	707	56.08	58.64	61.05
Rías Baixas	3,525	1,756	6,194	3,326	1.80	127	1,551	20.38	28.94	24.29
Costa Barcelona	3,052	1,279	6,555	2,398	2.07	139	1,240	24.01	40.06	28.78

6. Number of travellers, overnight stays, average stay, capacity, occupancy rates and employed personnel per rural house by Autonomous City and Community²

Autonomous Communities	Number of travellers		Number of overnight stays		Average stay	Capacity		Occupancy rate		Employed personnel
	Residents In Spain	Residents abroad	Residents In Spain	Residents abroad		Estimated open establishments	Estimated rural bed-places	Of bed-places	Of bed-places at weekends	
TOTAL	203,842	49,788	427,384	189,309	2.43	14,875	123,956	16.52	31.06	19,468
Andalucía	19,229	14,610	43,692	82,683	3.73	2,333	19,378	21.64	27.02	3,476
Aragón	11,692	1,810	25,809	8,833	2.57	979	7,691	14.89	29.26	1,108
Asturias, Principado de	6,774	1,225	17,137	5,271	2.80	887	5,685	13.12	20.41	1,037
Balears, Illes	2,566	12,426	6,476	36,835	2.89	162	2,450	58.49	60.36	623
Canarias	1,093	1,008	4,466	7,781	5.83	507	2,543	16.02	17.27	608
Cantabria	4,154	243	10,108	744	2.47	205	2,776	13.00	24.58	254
Castilla y León	39,128	1,367	82,550	3,433	2.12	3,264	23,825	12.00	28.75	3,763
Castilla-La Mancha	24,942	2,216	51,790	4,973	2.09	1,685	14,246	13.24	31.76	2,083
Cataluña	44,994	5,205	87,056	15,524	2.04	2,034	18,239	18.68	43.19	2,811
Comunitat Valenciana	8,320	1,590	15,661	5,795	2.17	802	7,351	9.70	19.85	1,079
Extremadura	6,247	407	12,912	820	2.06	373	3,637	12.56	24.88	498
Galicia	10,310	4,121	17,378	7,628	1.73	386	4,637	17.90	28.03	591
Madrid, Comunidad de	2,469	253	5,936	358	2.31	84	872	23.98	49.28	105
Murcia, Región de	3,621	559	7,355	1,525	2.12	144	2,046	14.43	36.70	211
Navarra, Comunidad Foral de	8,753	795	19,729	2,465	2.32	693	5,084	14.53	31.69	840
País Vasco	6,159	1,668	12,874	4,061	2.16	218	2,363	23.69	43.05	254
Rioja, La	3,393	286	6,454	581	1.91	119	1,132	20.44	46.09	128
Ceuta	-	-	-	-	-	-	-	-	-	-
Melilla	-	-	-	-	-	-	-	-	-	-

² To facilitate the comparability between data from different Autonomous Communities (and because of the different regulation and different characteristics), a group called rural house has been created, with those establishments with similar typology (location, capacity, etc...). The variables included in the previous table have been estimated with that type of establishments.

7. Travellers and overnight stays by country of residence

Results by countries	Travellers		Overnight stays	
	Total	%	Total	%
TOTAL	407,572	100.00	973,621	100.00
Residents Spain	309,243	75.87	636,897	65.42
Residents abroad	98,329	24.13	336,724	34.58
Total Residents abroad	98,329	100.00	336,724	100.00
Total Residents in EU (excluding Spain)	73,178	74.42	277,155	82.31
- Germany	21,511	21.88	91,352	27.13
- Belgium	3,425	3.48	13,371	3.97
- France	9,615	9.78	27,045	8.03
- Italy	3,153	3.21	9,182	2.73
- Netherlands	7,468	7.59	36,680	10.89
- Portugal	2,432	2.47	5,325	1.58
- United Kingdom	19,058	19.38	69,462	20.63
Switzerland	3,240	3.29	11,217	3.33
Other European countries	9,713	9.88	33,913	10.07
United States of America	6,339	6.45	14,397	4.28
Other countries	12,376	12.59	24,780	7.36

Tourist Accommodation Occupancy Survey Hostels Occupancy Survey (HOS)

June 2018

Provisional data

1. Travellers, overnight stays and average stay by Autonomous Cities and Communities

Autonomous cities and communities	Travellers			Overnight stays			Average stay
	Total	Residents in Spain	Residents abroad	Total	Residents in Spain	Residents abroad	
TOTAL	126,793	96,176	30,618	308,423	232,010	76,412	2.43
Andalucía	19,912	18,614	1,298	57,972	54,926	3,046	2.91
Aragón	4,564	4,313	251	11,129	10,431	698	2.44
Asturias, Principado de	515	450	65	1,790	1,688	102	3.48
Balears, Illes	-	-	-	-	-	-	-
Canarias	1,793	844	949	5,801	1,984	3,818	3.24
Cantabria	2,183	2,045	138	5,166	4,970	196	2.37
Castilla y León	4,756	4,111	645	12,521	11,052	1,469	2.63
Castilla - La Mancha	7,941	7,768	173	20,980	20,679	301	2.64
Cataluña	42,561	27,477	15,084	99,170	57,661	41,508	2.33
Comunitat Valenciana	14,628	9,358	5,270	38,803	25,145	13,658	2.65
Extremadura	1,479	1,418	61	3,630	3,444	186	2.45
Galicia	1,258	1,222	36	2,969	2,820	150	2.36
Madrid, Comunidad de	6,637	3,657	2,980	13,949	8,189	5,760	2.10
Murcia, Región de	-	-	-	-	-	-	-
Navarra, Comunidad Foral de	2,995	2,224	771	6,933	5,752	1,181	2.31
País Vasco	9,930	7,355	2,575	17,392	13,414	3,978	1.75
Rioja, La	1,297	1,012	286	2,318	2,021	297	1.79
Ceuta	-	-	-	-	-	-	-
Melilla	-	-	-	-	-	-	-
Annual rate	6.43	18.66	-19.60	11.23	21.58	-11.62	4.51
Cumulative annual rate	13.31	17.39	4.08	14.52	20.14	3.34	1.07

2. Open establishments, capacity, occupancy and number of staff by autonomous cities and communities

Autonomous cities and communities	Capacity		Occupancy rate		Employed personnel
	Estimated open establishments	Estimated bed-places	Of bed-places	Of bed-places at weekend	
TOTAL	262	28,244	36.40	36.44	2,177
Andalucía	19	3,957	48.83	49.45	237
Aragón	24	2,047	18.12	20.58	120
Asturias, Principado de	4	296	20.16	33.38	45
Balears, Illes	-	-	-	-	-
Canarias	25	589	32.84	34.63	58
Cantabria	10	666	25.86	24.94	43
Castilla y León	23	2,093	19.94	17.43	179
Castilla - La Mancha	27	3,012	23.22	23.14	245
Cataluña	50	6,843	48.31	44.52	467
Comunitat Valenciana	16	2,635	49.09	50.34	118
Extremadura	10	782	15.47	17.63	50
Galicia	6	624	15.86	12.12	86
Madrid, Comunidad de	7	757	61.42	65.11	217
Murcia, Región de	-	-	-	-	-
Navarra, Comunidad Foral de	12	994	23.25	20.04	77
País Vasco	19	2,118	27.37	30.52	153
Rioja, La	7	395	19.56	24.69	18
Ceuta	-	-	-	-	-
Melilla	-	-	-	-	-
Annual rate	3.22	0.11	11.11	-2.12	1.48
Cumulative annual rate	15.19	4.68	9.29	2.45	8.03

3. Travellers and overnight stays by countries of residence

Countries	Travellers		Overnight stays		Average stay
	Total	%	Total	%	
TOTAL	126,793	100.00	308,423	100.00	2.43
Residents in Spain	96,176	75.85	232,010	75.22	2.41
Residents abroad	30,618	24.15	76,412	24.78	2.50
TOTAL residents abroad	30,618	100.00	76,412	100.00	2.50
TOTAL residents in E.U. (excluding Spain)	17,685	57.76	42,972	56.24	2.43
- Germany	3,312	10.82	10,282	13.46	3.10
- Belgium	504	1.65	1,133	1.48	2.25
- France	4,378	14.30	8,568	11.21	1.96
- Italy	2,279	7.44	5,225	6.84	2.29
- Netherlands	833	2.72	2,510	3.28	3.01
- Portugal	663	2.16	1,302	1.70	1.97
- United Kingdom	3,361	10.98	8,669	11.34	2.58
Switzerland	345	1.13	860	1.12	2.49
Other European countries	4,945	16.15	10,742	14.06	2.17
United States of America	2,425	7.92	5,604	7.33	2.31
Other countries	7,572	24.73	21,519	28.16	2.84

HOLIDAY DWELLING PRICE INDEX (HDPI)

June 2018

Provisional data

National general index and breakdown by rates

	Index	Annual variation rate
TOTAL	149.58	2.97
Normal	141.49	2.39
Weekend	124.25	1.60
Tour-operators and travel agencies	161.59	3.69

National general index and breakdown by modalities

	Index	Annual variation rate
TOTAL	149.58	2.97
Studio	140.07	2.91
Dwellings 2/4 bedplaces	150.41	3.17
Dwellings 4/6 bedplaces	154.00	2.46

Tourist Campsite Price Index (TCSPI). 2002 Base

June 2018

Provisional data

National general index and breakdown by rates

	Index	Annual variation rate
TOTAL	158.46	1.24
Normal rate	159.31	2.08
Special rate for stays up to one month	145.43	-3.42
Special rate for stays longer than one month	166.03	1.66
Bungalow rate*	101.80	0.57

*2014 Base

National general index and breakdown by categories

	Index	Annual variation rate
TOTAL	158.46	1.24
Luxury and first	165.15	1.50
Second	150.59	0.53
Third	170.41	5.74

Rural Tourism Accommodation Price Index (RTAPI)

June 2018

Provisional data

General Autonomous Cities and Communities and national indices

	Index	Annual variation rate
TOTAL	144.19	2.56
Andalucía	134.89	2.28
Aragón	165.98	-0.13
Asturias, Principado de	136.30	6.24
Balears, Illes	145.45	2.69
Canarias	118.12	2.95
Cantabria	175.50	4.21
Castilla y León	135.27	1.71
Castilla - La Mancha	138.88	3.25
Cataluña	145.13	3.45
Comunitat Valenciana	142.98	6.82
Extremadura	103.33	-4.37
Galicia	130.66	1.86
Madrid, Comunidad de	147.52	5.58
Murcia, Región de	126.77	3.51
Navarra, Comunidad Foral de	194.58	-1.69
País Vasco	150.15	2.42
Rioja, La	124.20	-0.99
Ceuta	-	-
Melilla	-	-

National general index and breakdown by rates

	Index	Annual variation rate
TOTAL	144.19	2.56
Normal	145.59	2.92
Weekend	145.47	2.32

National general index and breakdown by rent modality

	Index	Annual variation rate
TOTAL	144.19	2.56
Shared use (in case of per room rent modality)	142.53	3.08
Full use (rent of entire dwelling)	145.58	2.20