

31 October 2018

Non-hotel Tourist Accommodation Occupancy Survey
September 2018. Provisional data

Overnight stays in non-hotel tourist accommodation decrease by 2.1% in September, as compared to the same month of 2017

Overnight stays in non-hotel tourist accommodation (apartments, tourist campsites, rural tourism accommodation and hostels) exceeded 12.5 million in September, 2.1% less than in the same month of 2017. Resident overnight stays increased 5.4% while non-resident overnight stays decreased 6.3%.

The average stay stood at 4.8 overnight stays per traveller.

During the first nine months of 2018, overnight stays decreased by 2.9% as compared with the same period of the previous year.

Travellers and overnight stays in collective non-hotel tourist accommodation during the month of September were:

September 2018	Arrivals	Overnight stays
Residents	1,383,823	4,920,600
EU Residents (excluding Spain)	1,067,455	6,823,641
Rest of the world	191,564	825,028
TOTAL	2,642,842	12,569,269

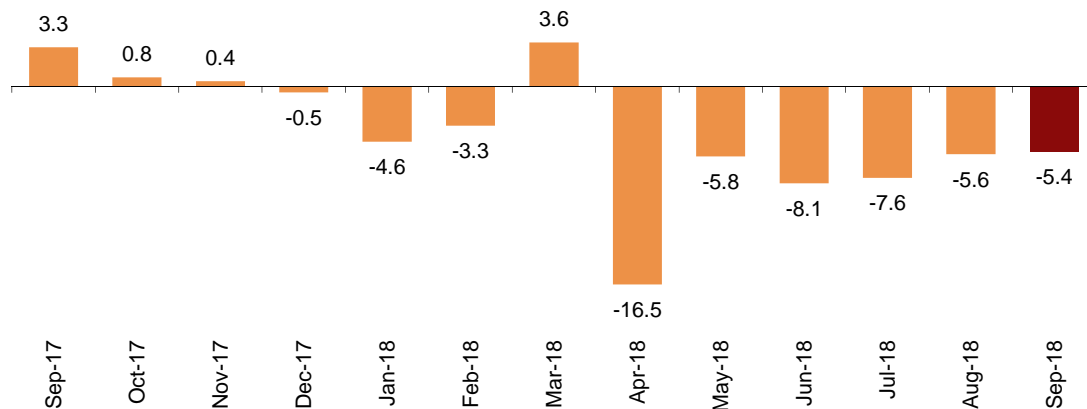
Holiday dwellings

Overnight stays in holiday dwellings decreased by 5.4% in September. Overnight stays by residents increased 2.2%, while those by non-residents decreased by 8.1%.

The average stay decreased by 2.3% as compared to September 2017, standing at 5.8 overnight stays per traveller.

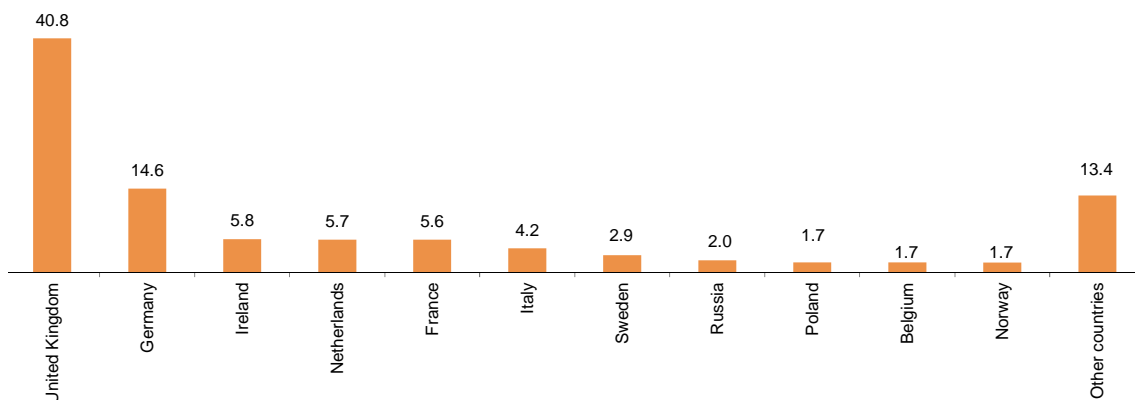
In September, 40.9% of the bed-places available for holiday dwellings were occupied, 2.6% less than in the same month of 2017. The weekend occupancy rate by bed-places stood at 43.2%, with a decrease of 1.7%.

Annual variation rate for overnight stays. %



Non-resident overnight stays in holiday dwellings represented 71.7% of the total. The United Kingdom was the main country of origin, with more than 2.1 million overnight stays, that is, 11.3% less than in September 2017. The following country of origin was Germany, with 785,739 overnight stays, 7.4% less.

Distribution of non-residents overnight stays. Main country of residence. %



Canarias was the preferred destination for holiday dwellings, with more than 2.3 million overnight stays and a decrease of 8.0% as compared to September 2017. Illes Balears reached the highest occupancy rate, with 83.8% of holiday dwellings offered.

By tourist areas, the island of Mallorca was the preferred destination, with 856,885 overnight stays. The island of Lanzarote registered the highest occupancy rate, with 88.2% of holiday dwellings offered.

The tourist sites with the greatest number of overnight stays in September were San Bartolomé de Tirajana, Arona and Tías.

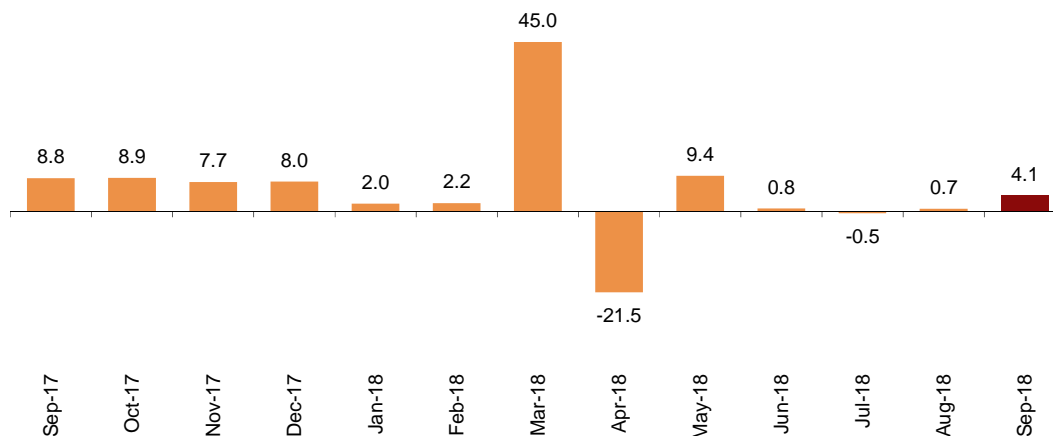
Tourist campsites

Overnight stays at tourist campsites registered an increase of 4.1% in September as compared with the same month of the previous year. Overnight stays by residents increased 10.8%, while those by non-residents decreased by 2.5%.

During the month of September, 37.6% of the offered pitches were occupied, 0.5% more than in the same month of 2017. The weekend occupancy rate by pitch reached 39.6%, with an annual increase of 3.9%.

47.1% of overnight stays on tourist campsites were made by non-residents. Germany was the main country of origin, with 21.7% of overnight stays by non-residents, 6.7% less than in September 2017.

Annual variation rate for overnight stays. %



Cataluña was the preferred destination for tourist campsites, with more than 1.8 million overnight stays, representing an increase of 2.9% in annual rate. La Rioja reached the highest occupancy rate, with 62.0% of the pitches offered.

By tourist area, the Costa Brava was the preferred destination, with 758,619 overnight stays. The Costa Blanca reached the highest occupancy rate, with 66.6% of pitches offered.

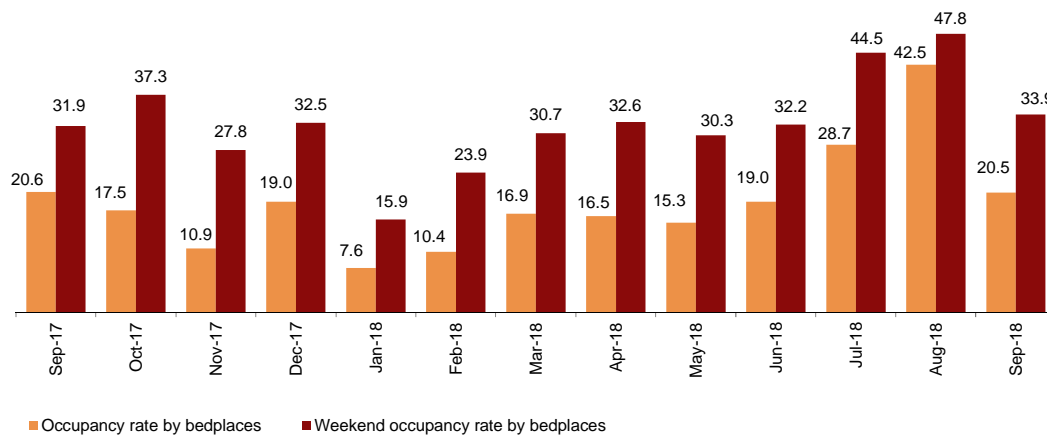
The tourist sites with the highest number of overnight stays were Benidorm, Mont-Roig Del Camp and Torroella de Montgrí.

Rural tourism accommodation

Overnight stays in rural tourism accommodation presented an annual increase of 1.4% in September. Resident overnight stays grew by 1.1%, and those of non-residents by 2.0%.

In rural tourism accommodation, 20.5% of the bed-places were occupied, 0.8% less than September 2017. The weekend occupancy rate stood at 33.9%, with an annual increase of 6.1%.

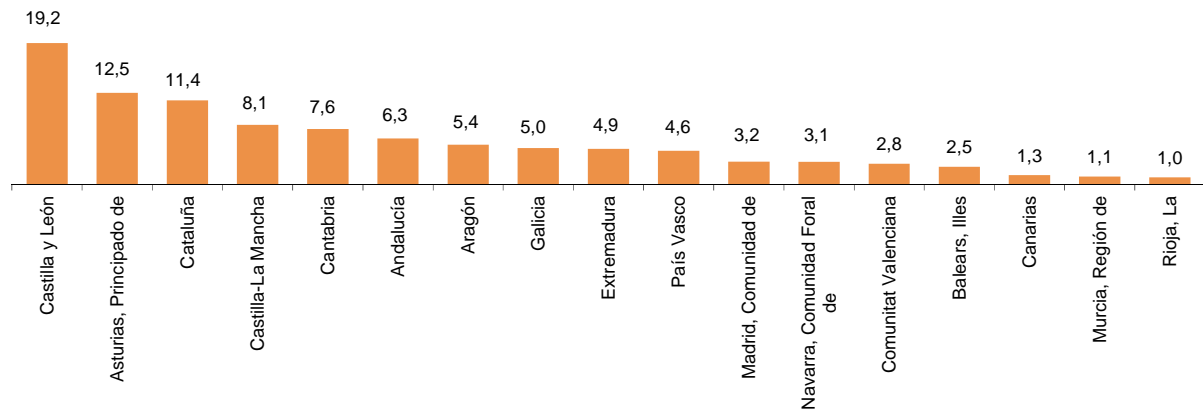
Occupancy rate. %



By Autonomous Community, Illes Balears was the preferred destination, with 177,837 overnight stays, 11.8% more than in September 2017. This Autonomous Community also reached the highest occupancy rate, with 61.9% of the bed-places offered.

By tourist areas, the island of Mallorca was the preferred destination, with 145,894 overnight stays. The island of Menorca registered the highest occupancy rate, with 67.5% of the bed-places offered.

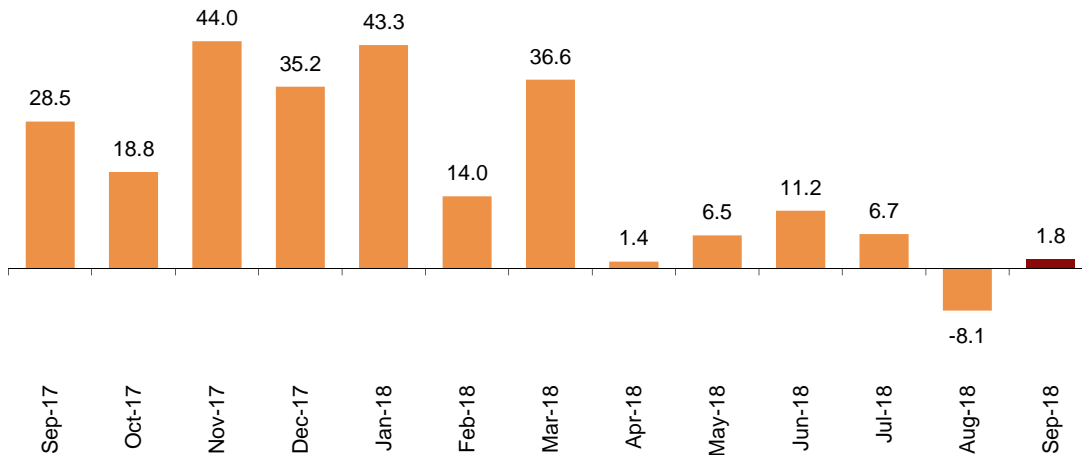
Distribution of overnight stays: residents. %



Youth Hostels

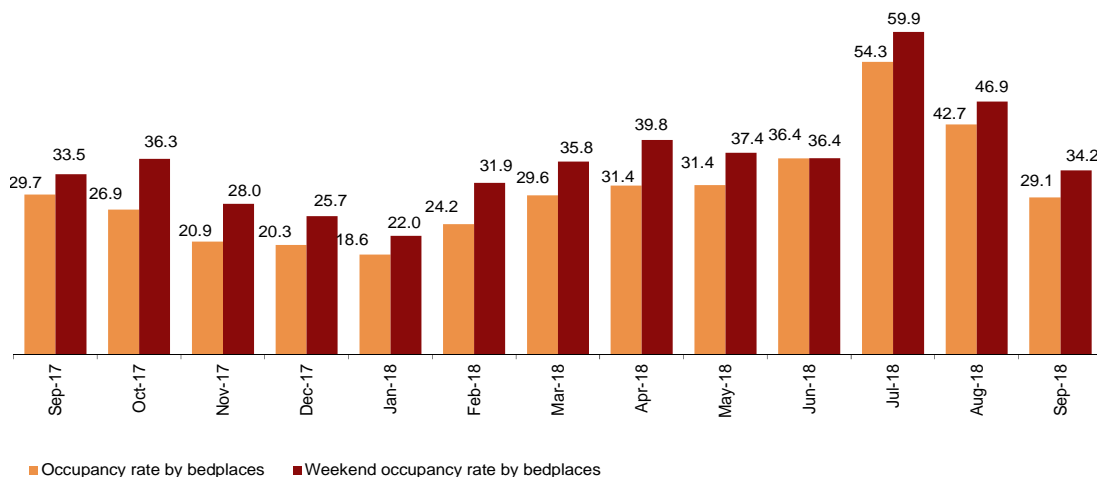
Overnight stays in hostels registered an annual increase of 1.8% in September. Resident overnight stays grew by 1.9%, and those of non-residents by 1.7%.

Annual variation rate for overnight stays. %



29.1% of the available bed-places were occupied, 1.8% less than September 2017. The weekend occupancy rate reached 34.2%, with a 2.1% increase.

Occupancy rate. %



By Autonomous Community, Cataluña was the preferred destination, with 88,004 overnight stays, 10.3% more than in September 2017. This Autonomous Community also reached the highest occupancy rate, with 47.2% of the bed-places offered.

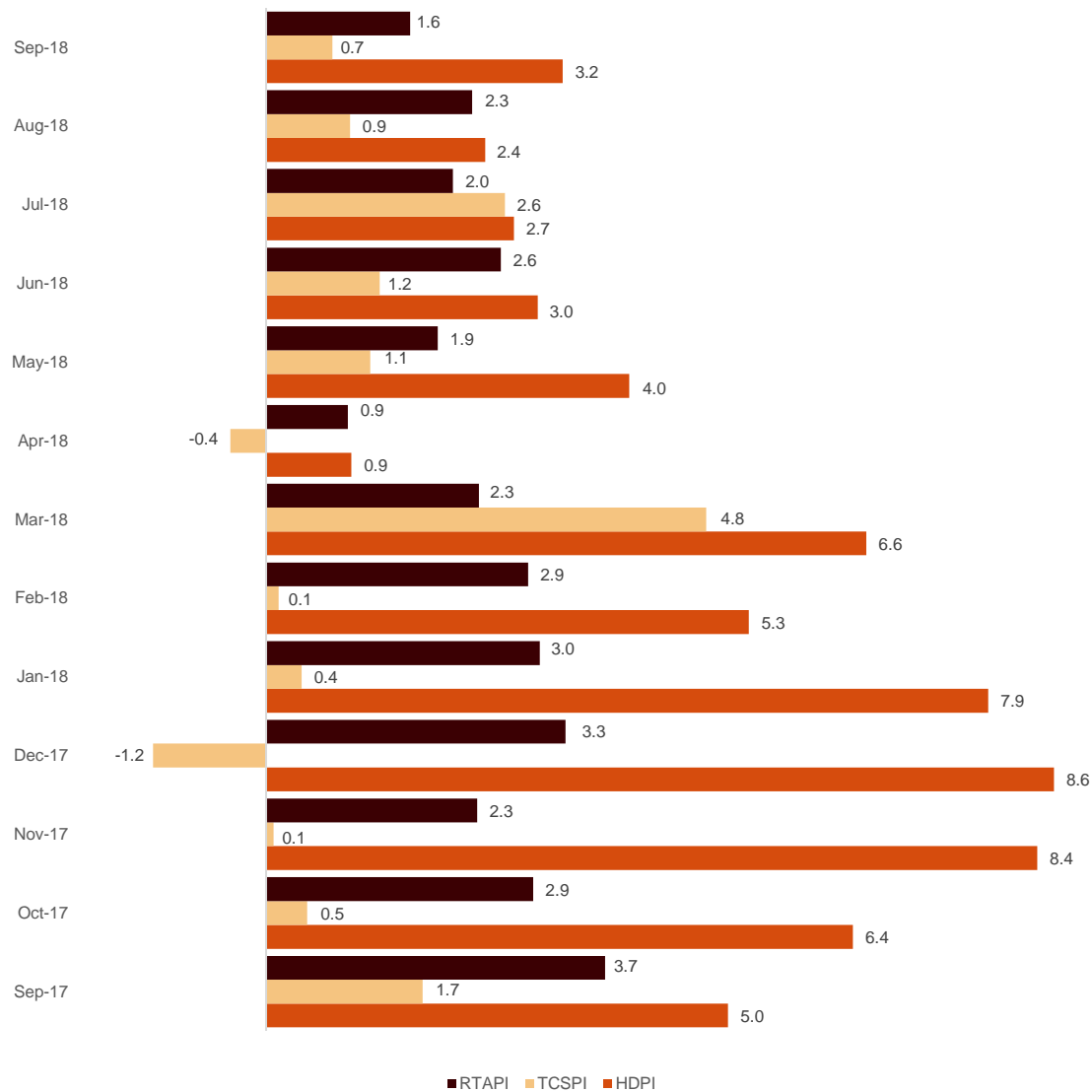
Price indices

The Holiday Dwelling Price Index (HDPI) increased 3.2%, as compared to September 2017. The rate for *tour operators and travel agencies*, which carried the greatest weight in the weighting structure for this month (50.1%), increased by 4.3%.

The Tourist Campsite Price Index (TCPI) increased by 0.7% in the annual rate. The *bungalow* rate, which carried the greatest weight in the weighting structure in September (47.2%), decreased by 0.9% as compared with the same month of 2017.

The Rural Tourism Accommodation Price Index (RTAPI) registered a 1.6% increase in September. The *weekend rate*, which accounted for 52.8% of the total weight, increased by 1.4% in the annual rate.

Prices Indexes. Annual variation rate. %



Evolution of travellers and overnight stays in all Spanish collective tourist accommodation

In September, overnight stays in Spanish collective tourist accommodation (hotels¹, holiday dwellings, tourist campsites, rural tourism accommodation and youth hostels) decreased by 0.8% in the annual rate. Overnight stays by residents increased 1.9%, while those by non-residents decreased by 2.1%.

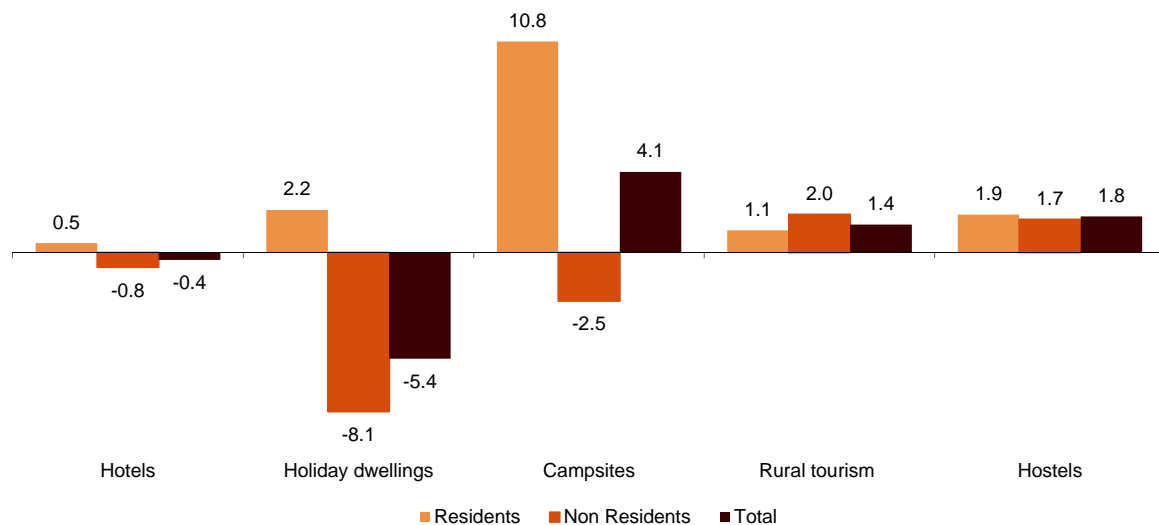
The average stay decreased 1.3%, and stood at 3.7 overnight stays per traveller.

Travellers and overnight stays in collective tourist accommodation were:

September 2018	Holiday dwellings	Campsites	Rural T.	Hostels	Non-hotel	Hotels	Total
Arrivals	1,297,171	841,019	419,183	85,470	2,642,843	11,005,081	13,647,924
Residents	482,590	544,555	306,461	50,217	1,383,823	4,834,460	6,218,283
Non-residents	814,581	296,463	112,722	35,253	1,259,019	6,170,622	7,429,641
Overnight stays	7,518,053	3,790,748	1,042,153	218,313	12,569,267	37,818,032	50,387,299
Residents	2,124,455	2,004,546	666,820	124,779	4,920,600	11,410,177	16,330,777
Non-residents	5,393,598	1,786,203	375,333	93,535	7,648,669	26,407,856	34,056,525

Of the total number of overnight stays in collective tourist accommodation, 75% corresponded to hotels and 25% to non-hotel tourist accommodation.

Overnight stays in collective tourist accommodation. Annual variation rate. %



The main countries of origin for all regulated tourist accommodation were the United Kingdom (with 28.8% of the total number of non-resident overnight stays), Germany (20.8%) and France (7.5%).

Illes Balears was the preferred destination, with 10.9 million overnight stays (1.2% less than in September 2017). It was followed by Cataluña, with 9.3 million overnight stays (and a decrease of 1.1%) and Canarias, with over 8.2 million (and an annual decrease of 3.7%).

¹ The press release corresponding to Hotel Tourism Short-Term Trends was published on 23 October.

Revision and updating of data

Coinciding with today's publication, the INE has updated the data for September 2017 of the Holiday Dwelling Price Index (HDPI), the Tourist Campsite Price Index (TCPI) and the Rural Tourism Accommodation Price Index (RTAPI). On the other hand, the occupancy survey data published today is provisional and will be reviewed in the third quarter of next year.

Methodological note

The main objective of the Holiday Dwelling Occupancy Survey (HDOS) is to ascertain the behaviour of a series of variables that make it possible to describe the segment that occupies this type of accommodation within the tourist sector, both from the point of view of supply and demand.

The Holiday Dwelling Price Index (HDPI) is a statistical measure of the monthly evolution of the prices that holiday dwellings apply to their clients.

Type of operation: monthly continuous survey.

Population scope: holiday dwelling establishments and/or companies operating holiday dwellings.

Geographical scope: the entire national territory, with the exception of Ceuta and Melilla where there are no establishments of this type.

Reference period of the results: the month.

Reference period of the information: The consultation of basic data refers to a fortnight of the month, chosen randomly, in such a way that among all the establishments they cover the complete month.

Type of sampling: stratified sampling by province and size of establishment, and for Canarias and Illes Balears stratified at island-size level.

Collection method: questionnaire filled in directly by the establishment.

For more information on these statistical operations, you can consult the [methodology and the standardised methodological report](#) for each of them in INEbase.

The main objective of the Campsite Occupancy Survey (COS) is to ascertain the behaviour of a series of variables that make it possible to describe the segment that occupies this type of accommodation within the tourist sector, both from the point of view of supply and demand.

The Tourist Campsite Price Index (TCPI) is a statistical measure of the monthly evolution of the prices that campsites apply to their clients.

Type of operation: monthly continuous survey.

Population scope: camping establishments.

Geographical scope: the entire national territory, with the exception of Ceuta and Melilla where there are no establishments of this type.

Reference period of the results: the month.

Reference period of the information: seven consecutive days of each month, chosen randomly in such a way that all the establishments cover the whole month.

Sample size: approximately 1200 establishments.

Type of sampling: comprehensive survey in all provinces.

Collection method: questionnaire filled in directly by the establishment.

For more information on these statistical operations, you can consult the [methodology and the standardised methodological report](#) for each of them in INEbase.

The main objective of the Rural Tourism Accommodation Occupancy Survey (RTAOS) is to ascertain the behaviour of a series of variables that make it possible to describe the fundamental characteristics of this type of accommodation within the tourist sector, both from the point of view of supply and demand.

The Rural Tourism Accommodation Price Index (RTAPI) is a statistical measure of the monthly evolution of the prices that entrepreneurs of this type of accommodation apply to their clients.

Type of operation: monthly continuous survey.

Population scope: rural tourism establishments registered as such in the corresponding register of each Autonomous Community.

Geographical scope: the entire national territory, with the exception of Ceuta and Melilla where there are no establishments of this type.

Reference period of the results: the month.

Reference period of the information: The consultation of basic data refers to all the days of the month.

Type of sampling: comprehensive survey in all provinces except those where the population size is large enough to take a sample.

Collection method: questionnaire filled in directly by the establishment.

For more information on these statistical operations, you can consult the [methodology and the standardised methodological report](#) for each of them in INEbase.

The main objective of the Hostels Occupancy Survey (HOS) is to ascertain the behaviour of a series of variables that make it possible to describe the fundamental characteristics of this type of accommodation within the tourist sector, both from the point of view of supply and demand.

For more information on this statistical operation, you can consult the [methodology and the standardised methodological report](#) in INEbase.

For further information see **INEbase:** www.ine.es/en/ Twitter: [@es_ine](https://twitter.com/es_ine)

All press releases at: www.ine.es/en/prensa/prensa_en.htm

Press office: Telephone numbers: (+34) 91 583 93 63 /94 08 – gprensa@ine.es

Information Area: Telephone number: (+34) 91 583 91 00 – www.ine.es/infoine/?L=1

Tourist Accommodation Occupancy Survey (Holiday Dwellings)

September 2018

Provisional data

1. Travellers, overnight stays and average stay by Autonomous Cities and Communities

Autonomous Cities and Communities	Travellers			Overnight stays			Average stay
	Total	Residents in Spain	Residents abroad	Total	Residents in Spain	Residents abroad	
TOTAL	1,297,171	482,590	814,581	7,518,053	2,124,455	5,393,598	5.80
Andalucía	261,693	117,041	144,652	1,082,557	412,355	670,202	4.14
Aragón	15,043	12,365	2,679	48,728	36,872	11,856	3.24
Asturias, Principado de	7,131	6,496	635	25,606	24,255	1,351	3.59
Balears, Illes	247,466	36,892	210,574	1,559,536	164,169	1,395,367	6.30
Canarias	301,711	62,134	239,578	2,386,247	323,713	2,062,534	7.91
Cantabria	25,808	22,622	3,185	89,241	78,026	11,214	3.46
Castilla y León	18,937	15,141	3,796	42,223	34,486	7,737	2.23
Castilla - La Mancha	8,955	8,304	651	27,186	22,362	4,824	3.04
Cataluña	120,491	50,913	69,579	699,388	249,925	449,463	5.80
Comunitat Valenciana	182,736	89,285	93,451	1,158,001	546,373	611,628	6.34
Extremadura	7,945	7,082	863	14,095	12,554	1,541	1.77
Galicia	15,939	11,209	4,730	54,173	42,205	11,968	3.40
Madrid, Comunidad de	46,942	20,875	26,067	160,723	69,001	91,722	3.42
Murcia, Región de	13,026	8,389	4,637	88,686	61,501	27,185	6.81
Navarra, Comunidad Foral de	7,725	5,024	2,701	23,596	15,629	7,967	3.05
País Vasco	12,077	5,745	6,332	49,630	23,722	25,908	4.11
Rioja, La	3,546	3,074	472	8,437	7,306	1,131	2.38
Ceuta	-	-	-	-	-	-	-
Melilla	-	-	-	-	-	-	-
Annual rate	-3.26	-0.42	-4.86	-5.44	2.17	-8.14	-2.26
Cumulative annual rate	-3.27	-0.98	-4.60	-6.31	-3.60	-7.29	-3.14

2. Capacity, occupancy and number of staff by Autonomous Cities and Communities

Autonomous Cities and Communities	Capacity		Level of occupancy				Employed personnel
	Estimated bedplaces	Estimated Holiday dwelling	Per bedplaces	Per bedplaces at weekend	Per Holiday dwelling	Per Holiday dwelling at weekend	
TOTAL	609,152	158,157	40.87	43.21	63.64	66.26	33,896
Andalucía	84,272	21,203	42.58	47.04	65.51	70.48	5,336
Aragón	8,713	2,007	18.59	28.25	27.96	37.47	568
Asturias, Principado de	5,083	1,358	16.78	22.35	22.94	29.88	350
Balears, Illes	79,891	25,329	64.27	64.38	83.79	83.96	6,854
Canarias	147,086	45,253	53.71	54.90	78.16	79.65	11,360
Cantabria	6,740	1,717	44.02	48.09	61.17	66.83	475
Castilla y León	6,198	1,406	22.67	35.15	33.52	45.68	542
Castilla - La Mancha	5,464	1,342	16.56	27.54	25.54	37.48	405
Cataluña	76,774	16,738	30.29	32.91	49.97	52.43	2,206
Comunitat Valenciana	152,053	31,819	25.37	26.74	41.28	43.53	3,412
Extremadura	1,956	462	24.02	30.82	35.93	45.00	180
Galicia	5,648	1,412	32.26	35.15	48.48	52.33	374
Madrid, Comunidad de	10,135	3,856	52.65	58.47	77.08	81.80	611
Murcia, Región de	10,534	2,339	28.06	29.90	46.94	49.75	311
Navarra, Comunidad Foral de	7,725	481	28.78	36.90	47.87	55.41	552
País Vasco	4,266	1,090	38.60	45.42	64.72	72.29	250
Rioja, La	1,615	344	17.41	31.61	33.85	53.53	111
Ceuta	-	-	-	-	-	-	-
Melilla	-	-	-	-	-	-	-
Annual rate	-3.01	-2.26	-2.59	-1.68	-2.26	-0.83	-0.57
Cumulative annual rate	-0.82	0.16	-5.46	-5.59	-5.25	-5.26	0.44

3. Travellers, overnight stays, capacity, occupancy, total number of staff with greater number of overnight stays *

Provinces	Travellers		Overnight stays			Capacity		Level of occupancy			Employed personnel
	Residents in Spain	Residents abroad	Residents in Spain	Residents abroad	Average stay	Estimated bed-places	Estimated holiday dwelling	Per bed-places	Per Holiday dwelling	Per Holiday dwelling at weekend	
Palmas, Las	35,687	154,939	195,192	1,340,671	8.06	93,942	28,660	54.10	80.06	81.55	7,046
Santa Cruz de Tenerife	26,446	84,639	128,522	721,863	7.66	53,144	16,593	53.02	74.88	76.34	4,315
Alicante\Alacant	37,164	72,355	223,134	480,802	6.43	100,090	21,742	23.43	38.81	40.79	2,314
Málaga	32,025	89,933	118,925	510,561	5.16	44,215	11,168	47.23	73.66	75.91	2,959
Girona	20,741	25,524	94,747	184,544	6.04	37,455	7,912	24.82	39.51	42.14	757
Castellón\Castelló	31,897	7,086	196,513	65,452	6.72	31,294	5,851	27.86	43.30	45.89	497
Tarragona	16,309	22,930	70,683	170,760	6.15	27,150	5,365	29.63	51.74	54.21	757
Valencia\València	20,224	14,009	126,727	65,373	5.61	20,669	4,226	30.97	51.13	54.37	601
Barcelona	11,163	20,826	75,807	92,591	5.26	9,642	2,894	58.52	81.71	83.18	610
Almería	20,548	4,501	92,776	36,164	5.15	12,976	2,913	33.05	55.60	60.44	429
Sevilla	16,867	26,655	38,700	63,720	2.35	6,397	1,867	53.03	75.22	81.41	499
Cádiz	14,314	8,038	52,936	23,838	3.43	6,253	1,612	41.03	59.39	66.57	487
Huelva	12,610	1,002	58,361	4,006	4.58	4,635	1,041	44.03	64.54	82.43	303
Granada	12,728	12,107	32,066	27,325	2.39	6,081	1,638	32.44	46.35	55.08	412
Gipúzkoa	2,769	5,038	11,484	21,620	4.24	2,569	617	42.83	62.00	71.83	153

4. Travellers, overnight stays, capacity, occupancy, total number of staff from tourist areas with greater number of overnight stays

Tourist Areas	Travellers		Overnight stays			Capacity		Level of occupancy			Employed personnel
	Residents in Spain	Residents abroad	Residents in Spain	Residents abroad	Average stay	Estimated bed-places	Estimated holiday dwelling	Per bed-places	Per Holiday dwelling	Per Holiday dwelling at weekend	
Isla de Mallorca	7,231	113,739	33,340	823,545	7.08	40,794	13,497	69.04	86.61	86.36	3,458
Isla de Tenerife	20,191	81,371	100,404	687,289	7.76	47,209	14,555	55.29	78.34	79.60	3,775
Isla de Gran Canaria	19,125	69,367	99,955	605,635	7.97	46,873	14,463	49.90	72.76	74.67	3,309
Costa Blanca	34,659	68,195	217,189	459,040	6.57	95,950	20,955	23.48	38.73	40.38	2,068
Costa del Sol	27,485	83,325	108,968	487,419	5.38	41,194	10,355	47.97	75.07	76.98	2,811
Isla de Lanzarote	10,204	61,359	59,136	517,836	8.06	32,419	9,606	58.85	88.23	89.21	2,600
Islas de Ibiza-Formentera	16,551	62,199	65,760	342,673	5.19	21,957	7,105	61.13	79.62	81.22	2,248
Isla de Menorca	13,110	34,635	65,069	229,149	6.16	17,140	4,727	56.97	81.97	81.19	1,148
Costa Brava	17,092	25,183	83,687	183,633	6.32	36,047	7,578	24.70	39.55	41.66	656
Costa de Castellón	30,043	6,897	190,319	65,133	6.92	29,919	5,574	28.42	44.18	46.45	459

5. Travellers, overnight stays, capacity, occupancy, total number of staff from tourist sites with greater number at overnights stays

Tourist sites	Travellers		Overnight stays			Capacity		Level of occupancy			Employed personnel
	Residents in Spain	Residents abroad	Residents in Spain	Residents abroad	Average stay	Estimated bed-places	Estimated holiday dwelling	Per bed-places	Per Holiday dwelling	Per Holiday dwelling at weekend	
San Bartolomé de Tirajana	12,892	42,046	65,623	371,887	7.96	29,647	9,387	48.78	70.99	73.29	2,099
Arona	5,801	37,678	30,236	314,718	7.93	19,829	6,377	57.82	76.82	77.95	1,616
Tías	4,221	34,594	27,261	288,898	8.15	16,945	5,177	61.72	89.40	89.47	1,163
Benidorm	9,226	39,373	56,076	226,293	5.81	26,382	6,400	35.66	60.08	63.83	774
Mogán	3,260	25,332	26,077	223,484	8.73	16,046	4,592	51.82	77.13	77.61	1,095
Adeje	3,101	24,809	18,593	220,148	8.55	14,448	4,067	54.57	83.48	82.60	963
Alcúdia	3,109	29,278	14,452	202,606	6.70	9,123	3,225	78.32	90.03	88.83	873
Calvià	1,640	25,455	6,559	186,388	7.12	9,964	3,407	64.41	85.77	87.41	739
Ciutadella de Menorca	6,107	22,941	31,173	149,751	6.23	10,268	3,038	58.40	80.61	79.57	752
Teguise	4,190	15,745	20,656	134,710	7.79	8,518	2,619	60.20	86.10	87.26	685

* Provinces belonging to uniprovincial Autonomous Communities have not been included because they are reflected in previous tables.

6. Travellers and overnight stays by countries of residence

Countries	Travellers		Overnight stays	
	Total	%	Total	%
TOTAL	1,297,171	100.00	7,518,053	100.00
Residents in Spain	482,590	37.20	2,124,455	28.26
Residents abroad	814,581	62.80	5,393,598	71.74
Total residents abroad	814,581	100.00	5,393,598	100.00
Total residents in E.U (excluding Spain)	690,542	84.77	4,780,957	88.64
- Germany	99,742	12.24	785,739	14.57
- Austria	4,880	0.60	26,909	0.50
- Belgium	13,653	1.68	91,901	1.70
-Denmark	11,406	1.40	83,241	1.54
- Finland	5,350	0.66	36,741	0.68
- France	49,693	6.10	304,621	5.65
- Greece	648	0.08	2,632	0.05
- Ireland	42,379	5.20	310,658	5.76
- Italy	45,254	5.56	223,860	4.15
- Luxembourg	577	0.07	4,166	0.08
- Netherlands	41,950	5.15	305,941	5.67
- Poland	14,251	1.75	92,075	1.71
- Portugal	11,213	1.38	47,607	0.88
- United Kingdom	308,920	37.92	2,198,354	40.76
- Czech Republic	5,143	0.63	32,677	0.61
- Sweden	21,637	2.66	158,941	2.95
- Other EU countries	13,845	1.70	74,896	1.39
Norway	12,558	1.54	90,120	1.67
Russia	14,456	1.77	110,156	2.04
Switzerland	9,509	1.17	57,381	1.06
Other european countries	9,819	1.21	63,920	1.19
United States of America	16,395	2.01	59,055	1.09
Rest of America	23,615	2.90	93,804	1.74
African countries	6,873	0.84	31,800	0.59
Other countries	30,816	3.78	106,403	1.97

Tourist Accommodation Occupancy Survey Campsite Occupancy Survey (COS)

September 2018

Provisional data

1. Travellers, overnight stays and average stay by category of establishment

Category	Travellers			Overnight stays			Average stay
	Total	Residents in Spain	Residents abroad	Total	Residents in Spain	Residents abroad	
TOTAL	841,019	544,555	296,463	3,790,748	2,004,546	1,786,203	4.51
Luxury and first-class	378,259	234,434	143,825	1,773,429	883,494	889,935	4.69
Second-class	383,561	249,454	134,107	1,701,257	887,682	813,574	4.44
Third-class	79,198	60,667	18,531	316,062	233,369	82,694	3.99
Annual rate	3.68	9.59	-5.67	4.12	10.80	-2.48	0.43
Cumulative annual rate	-0.77	-1.33	0.33	1.35	0.81	1.96	2.13

2. Open establishments, capacity, occupancy and number of staff by category of establishments

Category	Estimated open establishments	Capacity		Occupied pitches	Occupancy rate per pitch	Weekend occupancy rate	Employed personnel
		Estimated bedplaces	Estimated pitches				
TOTAL	1,013	683,518	208,184	2,346,394	37.57	39.60	9,148
Luxury and first-class	268	288,787	85,372	955,152	37.29	40.44	3,982
Second-class	564	323,306	100,857	1,148,764	37.97	39.45	4,361
Third-class	181	71,425	21,955	242,477	36.81	37.08	804
Annual rate	1.07	2.59	1.79	2.30	0.49	3.87	5.78
Cumulative annual rate	-0.28	0.65	0.14	0.79	0.61	-0.30	2.74

3. Travellers, overnight stays and average stay by Autonomous Cities and Communities

Autonomous cities and communities	Travellers			Overnight stays			Average stay
	Total	Residents in Spain	Residents abroad	Total	Residents in Spain	Residents abroad	
TOTAL	841,019	544,555	296,463	3,790,748	2,004,546	1,786,203	4.51
Andalucía	100,218	67,317	32,901	354,741	227,296	127,445	3.54
Aragón	36,088	19,907	16,182	91,623	50,121	41,502	2.54
Asturias, Principado de	20,288	12,595	7,693	88,210	71,491	16,719	4.35
Balears, Illes	7,575	4,041	3,534	34,801	13,269	21,532	4.59
Canarias	2,633	2,414	219	8,492	5,165	3,327	3.23
Cantabria	32,453	22,856	9,597	146,535	116,022	30,514	4.52
Castilla y León	34,340	18,618	15,722	73,015	46,306	26,710	2.13
Castilla - La Mancha	9,502	7,489	2,014	20,340	16,742	3,597	2.14
Cataluña	368,474	247,487	120,987	1,879,517	943,883	935,634	5.10
Comunitat Valenciana	87,430	52,583	34,847	680,295	247,347	432,949	7.78
Extremadura	10,024	7,154	2,870	24,247	18,576	5,671	2.42
Galicia	29,406	17,633	11,773	90,717	62,043	28,674	3.08
Madrid, Comunidad de	24,890	20,524	4,366	81,971	71,460	10,511	3.29
Murcia, Región de	10,902	6,620	4,281	72,817	26,384	46,433	6.68
Navarra, Comunidad Foral de	17,238	10,926	6,313	38,619	29,707	8,912	2.24
País Vasco	35,668	13,813	21,854	76,713	33,003	43,710	2.15
Rioja, La	13,890	12,580	1,310	28,096	25,732	2,364	2.02
Ceuta	-	-	-	-	-	-	-
Melilla	-	-	-	-	-	-	-

4. Open establishments, capacity, occupancy and number of staff by autonomous cities and communities

Autonomous cities and communities	Estimated open establishments	Capacity		Occupied pitches	Occupancy rate per pitch	Weekend occupancy rate	Employed personnel
		Estimated bedplaces	Estimated pitches				
TOTAL	1,013	683,518	208,184	2,346,394	37.57	39.60	9,148
Andalucía	133	77,968	25,262	193,060	25.47	28.36	1,111
Aragón	88	31,302	9,494	68,046	23.89	25.78	469
Asturias, Principado de	41	22,692	7,026	64,480	30.59	29.59	211
Balears, Illes	8	3,177	1,398	14,718	35.08	33.70	98
Canarias	7	7,201	1,781	7,635	14.29	17.09	24
Cantabria	42	33,618	10,615	117,232	36.81	39.81	242
Castilla y León	74	30,903	9,775	71,237	24.29	27.20	259
Castilla - La Mancha	26	10,357	3,158	19,238	20.31	28.83	138
Cataluña	280	284,295	83,176	1,060,295	42.49	44.06	3,912
Comunitat Valenciana	125	78,348	24,240	395,226	54.35	55.26	1,351
Extremadura	23	8,264	2,768	22,536	27.14	34.33	145
Galicia	77	28,869	9,020	51,568	19.06	17.96	343
Madrid, Comunidad de	20	18,003	6,115	90,552	49.36	51.69	260
Murcia, Región de	15	14,062	4,589	40,186	29.19	32.29	186
Navarra, Comunidad Foral de	24	14,587	3,849	36,024	31.19	36.93	155
País Vasco	23	11,881	3,482	49,043	46.95	45.71	169
Rioja, La	8	7,991	2,435	45,318	62.04	70.73	77
Ceuta	-	-	-	-	-	-	-
Melilla	-	-	-	-	-	-	-

5. Travellers and overnight stays, average stay, capacity, occupancy and number of staff by provinces with the greatest number of overnight stays*

Provinces	Travellers		Overnight stays		Average stay	Estimated open establishments	Estimated pitches	Occupancy rate per pitch	Employed personnel
	Residents in Spain	Residents abroad	Residents in Spain	Residents abroad					
	Girona	81,735	61,192	277,405					
Tarragona	93,831	34,385	441,413	301,391	5.79	61	24,683	48.86	1,154
Alicante\Alacant	23,786	16,137	124,217	272,930	9.95	48	10,922	61.75	670
Barcelona	58,784	23,210	180,417	118,033	3.64	61	15,105	49.65	646
Castellón\Castelló	12,644	10,989	62,616	110,185	7.31	39	6,755	50.29	321
Valencia\València	16,153	7,721	60,514	49,834	4.62	37	6,564	46.21	360
Cádiz	23,285	8,522	79,285	26,431	3.32	27	6,600	26.38	307
Málaga	9,297	7,908	36,975	51,377	5.14	29	4,906	34.84	246
Huelva	18,912	2,478	62,305	8,688	3.32	11	4,697	23.71	168
Huesca	13,873	9,934	34,330	24,864	2.49	59	6,987	24.53	353
Pontevedra	12,573	5,957	44,229	12,500	3.06	32	4,860	22.50	190
Gipuzkoa	8,794	14,884	18,736	33,392	2.20	13	2,222	46.33	91
Lleida	13,136	2,199	44,648	5,582	3.28	47	6,536	35.53	189
Almería	4,279	4,287	20,144	17,401	4.38	19	2,761	23.51	142
Coruña, A	4,210	4,480	16,109	13,875	3.45	31	3,265	16.88	112

* Provinces belonging to uniprovincial Autonomous Communities have not been included because they are reflected in previous tables.

6. Travellers, overnight stays, average stay, open establishments, capacity, occupancy and number of staff from tourist areas with the greatest number of overnight stays

Tourist areas	Travellers		Overnight stays		Average stay	Estimated open establishments	Estimated pitches	Occupancy rate per pitch	Employed personnel
	Residents in Spain	Residents abroad	Residents in Spain	Residents abroad					
Costa Brava	69,728	60,171	251,508	507,111	5.84	86	33,930	36.05	1,816
Costa Daurada	85,410	29,900	381,794	280,366	5.74	47	21,593	50.42	991
Costa Blanca	17,597	14,281	88,177	243,889	10.42	40	8,571	66.60	599
Costa Barcelona	44,217	22,645	148,433	116,472	3.96	38	12,282	50.00	489
pn Aiguamolls de l'Empordá	11,351	22,818	50,053	213,475	7.71	19	8,842	45.42	536
Costa de Castellón	10,869	10,340	55,443	107,362	7.68	31	5,996	52.89	295
Costa de la Luz (Cádiz)	22,620	7,910	78,124	25,310	3.39	23	5,978	27.77	286
Pirineus	31,681	2,990	82,873	8,658	2.64	76	10,198	40.55	378
Costa Valencia	9,673	5,621	44,715	43,376	5.76	19	4,458	49.02	220
Terres de l'Ebre	8,421	4,485	59,619	21,025	6.25	14	3,090	37.96	163
Costa Verde	10,442	6,403	66,277	14,106	4.77	33	6,023	33.30	179
Costa del Sol	7,697	5,182	32,981	46,478	6.17	14	3,666	39.25	180
Costa de la Luz (Huelva)	17,641	2,191	60,031	7,490	3.40	7	4,354	22.47	148
Rías Baixas	14,881	6,190	49,875	14,336	3.05	41	6,227	19.16	259
Costa Cálida	3,972	3,854	19,271	44,873	8.20	8	3,741	29.38	153

7. Travellers, overnight stays, average stay, open establishments, capacity, occupancy and number of staff from tourist sites with the greatest number at overnights stays

Tourist sites	Travellers		Overnight stays		Average stay	Estimated open establishments	Estimated pitches	Occupancy rate per pitch	Employed personnel
	Residents in Spain	Residents abroad	Residents in Spain	Residents abroad					
Benidorm	3,755	6,472	18,224	176,992	19.09	11	4,229	83.31	361
Mont-roig del Camp	9,239	10,628	52,865	98,889	7.64	6	4,272	53.34	156
Torroella de Montgrí	9,876	7,486	48,338	74,361	7.07	8	4,368	43.36	293
Sant Pere Pescador	6,837	8,686	15,378	92,188	6.93	7	3,522	42.32	291
Tarragona	13,425	4,750	69,977	31,021	5.56	6	3,011	49.21	258
Cambrils	11,394	3,629	69,538	29,541	6.60	6	3,123	53.76	162
Blanes	10,784	4,329	29,833	54,730	5.60	10	3,569	43.32	216
Castelló d'Empúries	2,721	5,142	21,603	61,242	10.54	4	2,749	51.53	125
Calonge	3,256	4,356	14,492	42,462	7.48	3	2,450	26.65	85
Vilanova i la Geltrú	8,190	5,835	18,052	38,368	4.02	3	2,637	43.81	93
Noja	4,560	1,026	41,837	6,928	8.73	4	2,366	42.16	41
Oliva	2,451	3,004	15,863	31,390	8.66	6	1,434	54.88	119

8. Travellers and overnight stays by countries of residence

Countries	Travellers		Overnight stays	
	Total	%	Total	%
TOTAL	841,019	100.00	3,790,748	100.00
Residents in Spain	544,555	64.75	2,004,546	52.88
Residents abroad	296,463	35.25	1,786,203	47.12
TOTAL residents abroad	296,463	100.00	1,786,203	100.00
TOTAL residents in E.U. (excluding Spain)	271,705	91.65	1,680,301	94.07
- Germany	65,502	22.09	386,971	21.66
- Austria	2,672	0.90	7,762	0.43
- Belgium	12,279	4.14	88,318	4.94
- Denmark	1,778	0.60	12,487	0.70
- Finland	675	0.23	3,534	0.20
- France	73,810	24.90	362,629	20.30
- Greece	107	0.04	260	0.01
- Ireland	5,873	1.98	37,630	2.11
- Italy	6,129	2.07	20,053	1.12
- Luxembourg	398	0.13	2,348	0.13
- Netherlands	40,171	13.55	312,309	17.48
- Poland	3,712	1.25	19,991	1.12
- Portugal	8,329	2.81	23,684	1.33
- United Kingdom	44,438	14.99	378,509	21.19
- Czech Republic	1,043	0.35	3,480	0.19
- Sweden	2,324	0.78	11,911	0.67
- Other EU countries	2,463	0.83	8,425	0.47
Norway	490	0.17	3,775	0.21
Russia	627	0.21	3,992	0.22
Switzerland	11,905	4.02	61,317	3.43
Other European countries	3,123	1.05	13,933	0.78
United States of America	888	0.30	2,108	0.12
Rest of America	2,347	0.79	6,204	0.35
African countries	253	0.09	520	0.03
Other countries	5,127	1.73	14,053	0.79

Tourist accommodation occupancy survey (Rural tourist accommodation)

September 2018

Provisional data

1. Number of travellers, overnight stays and average stay by Autonomous City and Community

Autonomous Communities	Number of travellers			Number of overnight stays			Average stay
	Total	Residents In Spain	Residents abroad	Total	Residents In Spain	Residents abroad	
TOTAL	419,183	306,461	112,722	1,042,153	666,820	375,333	2.49
Andalucía	35,018	18,599	16,419	127,150	41,809	85,341	3.63
Aragón	17,157	14,340	2,817	43,967	36,247	7,720	2.56
Asturias, Principado de	32,220	27,346	4,874	97,127	83,063	14,064	3.01
Balears, Illes	47,329	5,992	41,338	177,837	16,414	161,423	3.76
Canarias	6,044	3,086	2,958	26,970	8,681	18,289	4.46
Cantabria	28,131	24,454	3,676	58,098	50,388	7,710	2.07
Castilla y León	76,210	65,394	10,816	145,333	128,167	17,166	1.91
Castilla-La Mancha	28,620	26,916	1,704	57,786	54,243	3,542	2.02
Cataluña	41,371	35,608	5,762	92,402	76,333	16,069	2.23
Comunitat Valenciana	12,298	10,199	2,099	26,241	19,001	7,240	2.13
Extremadura	18,089	16,356	1,733	36,265	32,490	3,775	2.00
Galicia	28,886	18,042	10,843	48,505	33,253	15,252	1.68
Madrid, Comunidad de	12,643	11,875	769	22,831	21,005	1,826	1.81
Murcia, Región de	3,838	3,390	449	9,094	7,535	1,559	2.37
Navarra, Comunidad Foral de	10,136	8,873	1,262	24,407	20,723	3,684	2.41
País Vasco	17,431	12,611	4,820	40,791	30,842	9,948	2.34
Rioja, La	3,763	3,379	384	7,352	6,627	725	1.95
Ceuta	-	-	-	-	-	-	-
Melilla	-	-	-	-	-	-	-
Annual rate	3.68	3.79	3.36	1.43	1.14	1.95	-2.17
Cumulative annual rate	3.88	1.85	11.51	2.55	-0.55	10.36	-1.28

2. Open rural establishments, bed-places, occupancy rates and employed personnel by Autonomous City and Community

Autonomous Communities	Estimated open rural establishments	Estimated bed-places	Occupancy rate			Employed personnel
			Of bed-places	Of bed-places at weekend	Of bedrooms	
TOTAL	17,298	168,852	20.48	33.89	25.26	26,339
Andalucía	2,325	19,375	21.82	29.46	32.11	3,467
Aragón	1,252	9,967	14.64	27.57	17.71	1,456
Asturias, Principado de	1,473	14,737	21.95	30.25	26.17	2,050
Balears, Illes	492	9,480	61.93	60.04	69.34	2,928
Canarias	532	3,382	26.50	29.75	38.56	782
Cantabria	457	7,507	25.62	40.49	30.28	813
Castilla y León	3,702	32,750	14.76	32.32	18.27	5,111
Castilla-La Mancha	1,697	14,837	12.94	31.42	14.87	2,132
Cataluña	1,963	17,741	17.30	37.13	20.96	2,558
Comunitat Valenciana	808	9,490	9.19	19.55	13.60	1,127
Extremadura	557	6,924	17.42	33.32	22.23	827
Galicia	516	6,622	24.26	34.25	26.78	952
Madrid, Comunidad de	226	3,602	21.03	44.90	30.29	520
Murcia, Región de	138	2,233	13.56	30.66	19.60	234
Navarra, Comunidad Foral de	671	4,955	16.32	30.87	18.01	810
País Vasco	372	4,131	32.61	46.04	37.22	449
Rioja, La	116	1,119	21.72	51.77	22.90	122
Ceuta	-	-	-	-	-	-
Melilla	-	-	-	-	-	-
Annual rate	1.28	2.26	-0.75	6.11	-0.67	1.97
Cumulative annual rate	1.50	2.78	-0.26	-2.13	-0.65	4.84

3. Number of travellers, overnight stays and average stay in Provinces with the greatest number of overnight stays¹

Provinces	Number of travellers			Number of overnight stays			Average stay
	Total	Residents In Spain	Residents abroad	Total	Residents In Spain	Residents abroad	
Málaga	12,500	2,609	9,891	76,492	9,310	67,182	6.12
Girona	18,315	16,049	2,266	42,766	35,196	7,570	2.34
Cáceres	14,635	13,303	1,331	29,154	26,181	2,973	1.99
Huesca	10,133	8,152	1,982	28,368	22,519	5,849	2.80
Barcelona	12,757	10,501	2,256	26,970	21,971	4,999	2.11
Ávila	13,076	12,825	251	26,434	26,041	392	2.02
Gipuzkoa	8,985	6,293	2,692	22,437	16,666	5,771	2.50
Segovia	10,945	10,467	478	21,245	19,988	1,257	1.94
Santa Cruz de Tenerife	4,289	2,126	2,163	20,813	6,443	14,370	4.85
Burgos	10,771	8,332	2,439	20,252	16,599	3,653	1.88
León	11,647	7,326	4,322	18,954	14,059	4,895	1.63
Coruña, A	10,494	5,110	5,384	17,324	9,979	7,346	1.65
Toledo	7,441	7,010	431	14,192	13,075	1,117	1.91
Lleida	6,499	6,081	418	14,086	13,134	953	2.17
Salamanca	7,789	6,985	804	14,053	11,798	2,255	1.80

4. Open rural establishments, bed-places, occupancy rates and employed personnel in Provinces with the highest number of overnight stays¹

Provinces	Estimated open rural establishments	Estimated bed-places	Occupancy rate			Employed personnel
			Of bed-places	Of bed-places at weekend	Of bedrooms	
Málaga	1,305	8,750	29.10	30.72	45.62	1,863
Girona	635	6,621	21.47	45.93	26.51	750
Cáceres	456	5,665	17.13	34.18	20.97	655
Huesca	711	5,438	17.34	28.81	21.19	850
Barcelona	541	4,720	18.91	42.82	22.08	830
Ávila	797	6,218	14.14	36.81	17.22	1,015
Gipuzkoa	172	1,984	37.31	47.37	43.32	221
Segovia	471	4,350	16.25	43.07	19.01	643
Santa Cruz de Tenerife	433	2,573	26.88	29.96	39.45	611
Burgos	423	4,150	16.22	32.73	19.27	536
León	502	4,137	15.26	23.43	19.69	731
Coruña, A	152	1,910	30.15	37.03	33.17	283
Toledo	223	2,458	19.14	41.99	24.70	300
Lleida	525	3,990	11.75	24.38	14.47	636
Salamanca	509	4,181	11.18	21.94	13.71	652

¹ Provinces belonging to uniprovincial Autonomous Communities have not been included because they are reflected in previous tables.

5. Number of travellers, overnight stays, average stay, capacity and occupancy rates in areas with the highest number of overnight stays

Areas	Number of travellers		Number of overnight stays			Capacity		Occupancy rate		
	Residents In Spain	Residents abroad	Residents In Spain	Residents abroad	Average stay	Estimated open rural establishments	Estimated bed-places	Of bed-places	Of bed-places at weekend	Of bedrooms
Isla de Mallorca	3,608	34,959	9,094	136,800	3.78	409	7,854	61.35	58.76	69.34
Costa Verde	10,770	1,664	31,555	3,806	2.84	516	5,821	20.23	26.23	24.46
P. Natural Sierras de Tejeda, Almijara y Alhama	883	5,204	2,420	30,871	5.47	448	2,745	40.42	37.42	64.15
Pirineus	13,766	779	29,510	1,620	2.14	764	6,469	15.96	37.46	18.81
Costa Brava	10,531	1,958	23,972	7,053	2.48	403	4,309	23.95	48.69	29.79
P. Nacional Picos de Europa	8,861	1,867	24,688	5,253	2.79	332	3,177	31.37	34.91	34.18
Pirineo Aragonés	7,271	1,742	20,343	5,720	2.89	660	5,069	17.09	28.47	21.03
Extremadura Norte	10,179	520	20,972	1,467	2.10	307	3,884	19.23	36.21	23.43
Pirineo Navarro	8,008	1,099	18,851	3,152	2.42	569	4,049	17.96	32.01	19.80
Isla de Menorca	1,975	3,644	6,103	12,709	3.35	49	918	67.49	73.08	71.75
Costa del Sol	336	1,405	2,236	13,537	9.06	236	1,536	34.24	36.08	61.48
Rías Baixas	4,574	2,529	9,363	4,115	1.90	124	1,556	28.75	38.45	31.42
Islas de Ibiza-Formentera	408	2,735	1,216	11,914	4.18	35	709	61.23	57.27	66.08
Costa de Gipuzkoa	2,681	1,438	7,881	3,765	2.83	66	753	51.12	58.71	57.90
P. Nacional Sierra de Guadarrama	7,029	437	10,372	1,172	1.55	125	1,795	21.40	49.13	28.16

6. Number of travellers, overnight stays, average stay, capacity, occupancy rates and employed personnel per rural house by Autonomous City and Community²

Autonomous Communities	Number of travellers		Number of overnight stays			Capacity		Occupancy rate		Employed personnel
	Residents In Spain	Residents abroad	Residents In Spain	Residents abroad	Average stay	Estimated open rural establishments	Estimated bed-places	Of bed-places at weekends		
TOTAL	194,402	57,003	437,673	202,233	2.55	14,740	123,102	17.27	31.10	19,322
Andalucía	18,519	16,226	41,656	84,964	3.64	2,322	19,221	21.91	29.47	3,451
Aragón	11,704	2,499	29,071	6,497	2.50	1,017	7,980	14.79	28.23	1,195
Asturias, Principado de	10,985	1,658	32,132	5,440	2.97	931	6,269	19.96	26.91	1,105
Balears, Illes	2,482	12,622	5,488	40,209	3.03	162	2,403	62.96	61.87	608
Canarias	1,085	1,348	4,923	11,528	6.76	502	2,528	21.60	24.13	619
Cantabria	4,653	465	10,736	1,281	2.35	205	2,734	14.64	25.70	263
Castilla y León	34,219	1,730	78,909	5,128	2.34	3,276	23,920	11.69	27.87	3,900
Castilla-La Mancha	25,924	1,682	52,288	3,520	2.02	1,668	14,116	13.14	31.78	2,095
Cataluña	35,608	5,762	76,333	16,069	2.23	1,963	17,741	17.30	37.13	2,558
Comunitat Valenciana	7,409	1,969	14,621	6,825	2.29	761	6,946	10.26	21.19	982
Extremadura	6,458	437	12,929	1,076	2.03	343	3,431	13.58	29.47	479
Galicia	11,364	5,874	22,797	8,827	1.83	377	4,544	23.03	33.19	593
Madrid, Comunidad de	2,088	98	5,925	169	2.79	85	956	21.16	42.52	98
Murcia, Región de	2,416	217	6,006	1,015	2.67	124	1,884	12.42	31.01	195
Navarra, Comunidad Foral de	8,850	1,258	20,700	3,680	2.41	669	4,941	16.34	30.89	801
País Vasco	7,257	2,775	16,533	5,282	2.17	217	2,369	30.48	44.59	259
Rioja, La	3,379	384	6,627	725	1.95	116	1,119	21.72	51.77	122
Ceuta	-	-	-	-	-	-	-	-	-	-
Melilla	-	-	-	-	-	-	-	-	-	-

² To facilitate the comparability between data from different Autonomous Communities (and because of the different regulation and different characteristics), a group called rural house has been created, with those establishments with similar typology (location, capacity, etc...). The variables included in the previous table have been estimated with that type of establishments.

7. Travellers and overnight stays by country of residence

Results by countries	Travellers		Overnight stays	
	Total	%	Total	%
TOTAL	419,183	100.00	1,042,153	100.00
Residents Spain	306,461	73.11	666,820	63.98
Residents abroad	112,722	26.89	375,333	36.02
Total Residents abroad	112,722	100.00	375,333	100.00
Total Residents in EU (excluding Spain)	82,083	72.82	306,432	81.64
- Germany	26,310	23.34	115,254	30.71
- Belgium	3,506	3.11	12,013	3.20
- France	12,080	10.72	31,067	8.28
- Italy	3,213	2.85	9,110	2.43
- Netherlands	7,594	6.74	36,236	9.65
- Portugal	1,577	1.40	3,080	0.82
- United Kingdom	20,673	18.34	76,188	20.30
Switzerland	3,787	3.36	13,325	3.55
Other European countries	11,331	10.05	35,581	9.48
United States of America	7,033	6.24	14,366	3.83
Other countries	15,618	13.86	29,111	7.76

Tourist Accommodation Occupancy Survey Hostels Occupancy Survey (HOS)

September 2018

Provisional data

1. Travellers, overnight stays and average stay by Autonomous Cities and Communities

Autonomous cities and communities	Travellers			Overnight stays			Average stay
	Total	Residents in Spain	Residents abroad	Total	Residents in Spain	Residents abroad	
TOTAL	85,470	50,217	35,253	218,313	124,779	93,535	2.55
Andalucía	12,906	10,365	2,541	44,124	37,070	7,054	3.42
Aragón	2,530	2,264	266	5,427	4,836	592	2.14
Asturias, Principado de	389	352	37	1,605	1,533	72	4.13
Balears, Illes	-	-	-	-	-	-	-
Canarias	2,039	715	1,324	8,250	2,330	5,920	4.05
Cantabria	1,271	1,061	210	2,677	2,246	431	2.11
Castilla y León	3,401	2,804	597	6,347	4,948	1,399	1.87
Castilla - La Mancha	2,549	2,334	216	5,652	5,300	352	2.22
Cataluña	33,882	15,850	18,031	88,004	34,073	53,931	2.60
Comunitat Valenciana	9,047	4,391	4,656	25,395	12,003	13,392	2.81
Extremadura	1,079	1,043	36	1,961	1,918	42	1.82
Galicia	485	425	60	1,792	1,670	122	3.69
Madrid, Comunidad de	4,071	973	3,099	6,328	2,251	4,077	1.55
Murcia, Región de	-	-	-	-	-	-	-
Navarra, Comunidad Foral de	2,619	1,194	1,425	4,193	2,434	1,759	1.60
País Vasco	7,177	5,091	2,086	12,644	9,084	3,560	1.76
Rioja, La	1,316	713	603	1,634	1,002	632	1.24
Ceuta	-	-	-	-	-	-	-
Melilla	-	-	-	-	-	-	-
Annual rate	-2.71	-0.20	-6.06	1.84	1.94	1.70	4.67
Cumulative annual rate	7.67	12.82	-2.07	7.54	12.54	-2.99	-0.12

2. Open establishments, capacity, occupancy and number of staff by autonomous cities and communities

Autonomous cities and communities	Capacity		Occupancy rate		Employed personnel
	Estimated open establishments	Estimated bed-places	Of bed-places	Of bed-places at weekend	
TOTAL	241	24,979	29.13	34.18	1,856
Andalucía	18	3,589	40.98	43.79	223
Aragón	20	1,726	10.48	19.28	95
Asturias, Principado de	4	292	18.34	19.81	51
Balears, Illes	-	-	-	-	-
Canarias	27	662	41.56	47.53	70
Cantabria	8	593	15.05	25.24	33
Castilla y León	21	1,961	10.79	21.02	150
Castilla - La Mancha	25	2,533	7.44	14.27	101
Cataluña	46	6,220	47.16	49.83	421
Comunitat Valenciana	14	2,322	36.46	40.54	105
Extremadura	9	690	9.47	25.00	60
Galicia	6	553	10.80	12.26	122
Madrid, Comunidad de	4	493	42.80	49.85	159
Murcia, Región de	-	-	-	-	-
Navarra, Comunidad Foral de	11	968	14.44	15.35	76
País Vasco	17	1,845	22.84	24.87	129
Rioja, La	5	276	19.77	42.06	17
Ceuta	-	-	-	-	-
Melilla	-	-	-	-	-
Annual rate	6.14	3.75	-1.84	2.07	2.72
Cumulative annual rate	10.84	3.66	3.76	0.90	6.17

3. Travellers and overnight stays by countries of residence

Countries	Travellers		Overnight stays		Average stay
	Total	%	Total	%	
TOTAL	85,470	100.00	218,313	100.00	2.55
Residents in Spain	50,217	58.75	124,779	57.16	2.48
Residents abroad	35,253	41.25	93,535	42.84	2.65
TOTAL residents abroad	35,253	100.00	93,535	100.00	2.65
TOTAL residents in E.U. (excluding Spain)	23,125	65.60	55,951	59.82	2.42
- Germany	5,486	15.56	15,005	16.04	2.74
- Belgium	598	1.70	1,471	1.57	2.46
- France	4,194	11.90	8,239	8.81	1.96
- Italy	3,370	9.56	8,233	8.80	2.44
- Netherlands	1,248	3.54	3,793	4.06	3.04
- Portugal	867	2.46	1,745	1.87	2.01
- United Kingdom	4,053	11.50	8,703	9.30	2.15
Switzerland	772	2.19	1,737	1.86	2.25
Other European countries	6,109	17.33	16,053	17.16	2.63
United States of America	1,803	5.11	3,942	4.21	2.19
Other countries	6,754	19.16	24,615	26.32	3.64

HOLIDAY DWELLING PRICE INDEX (HDPI)

September 2018

Provisional data

National general index and breakdown by rates

	Index	Annual variation rate
TOTAL	144.14	3.24
Normal	132.47	2.09
Weekend	136.69	2.56
Tour-operators and travel agencies	155.10	4.30

National general index and breakdown by modalities

	Index	Annual variation rate
TOTAL	144.14	3.24
Studio	141.21	2.88
Dwellings 2/4 bedplaces	145.75	3.56
Dwellings 4/6 bedplaces	141.90	2.60

**Tourist Campsite Price Index (TCSPI). 2002 Base
September 2018**

Provisional data

National general index and breakdown by rates

	Index	Annual variation rate
TOTAL	137.49	0.73
Normal rate	137.10	2.10
Special rate for stays up to one month	126.13	-0.65
Special rate for stays longer than one month	145.47	2.53
Bungalow rate*	101.47	-0.87

National general index and breakdown by categories

	Index	Annual variation rate
TOTAL	137.49	0.73
Luxury and first	132.45	1.21
Second	138.87	0.38
Third	159.58	-0.73

*2014 Base

**Rural Tourism Accommodation Price Index (RTAPI)
September 2018**

Provisional data

**General Autonomous Cities and Communities
and national indices**

	Index	Annual variation rate
TOTAL	141.33	1.57
Andalucía	140.55	2.04
Aragón	170.58	-0.45
Asturias, Principado de	128.45	2.26
Balears, Illes	139.24	1.19
Canarias	118.27	1.98
Cantabria	166.90	4.07
Castilla y León	130.18	0.35
Castilla - La Mancha	132.31	0.61
Cataluña	138.29	1.51
Comunitat Valenciana	144.04	7.31
Extremadura	103.92	-0.33
Galicia	129.33	2.64
Madrid, Comunidad de	139.74	-0.52
Murcia, Región de	121.68	1.15
Navarra, Comunidad Foral de	188.91	5.63
País Vasco	147.28	2.40
Rioja, La	122.69	2.18
Ceuta	-	-
Melilla	-	-

National general index and breakdown by rates

	Index	Annual variation rate
TOTAL	141.33	1.57
Normal	142.83	1.76
Weekend	142.13	1.41

National general index and breakdown by rent modality

	Index	Annual variation rate
TOTAL	141.33	1.57
Shared use (in case of per room rent modality)	137.70	1.35
Full use (rent of entire dwelling)	142.31	1.75