

29 November 2013

Non-Hotel Tourist Accommodation Occupancy Survey

October 2013. *Provisional data*

Overnight stays in non-hotel tourist accommodation increased 3.1% in October⁽¹⁾, as compared with the same month of 2012

Overnight stays in non-hotel tourist accommodation (holiday dwellings, campsites and rural tourism accommodation) exceeded 6.5 millions in October, 3.1% more than in the same month of 2012. Overnight stays by resident travellers decreased 4.1% while those of non-residents increased 5.5%. The average stay decreased 0.7%, standing at 5.6 overnights per traveller.

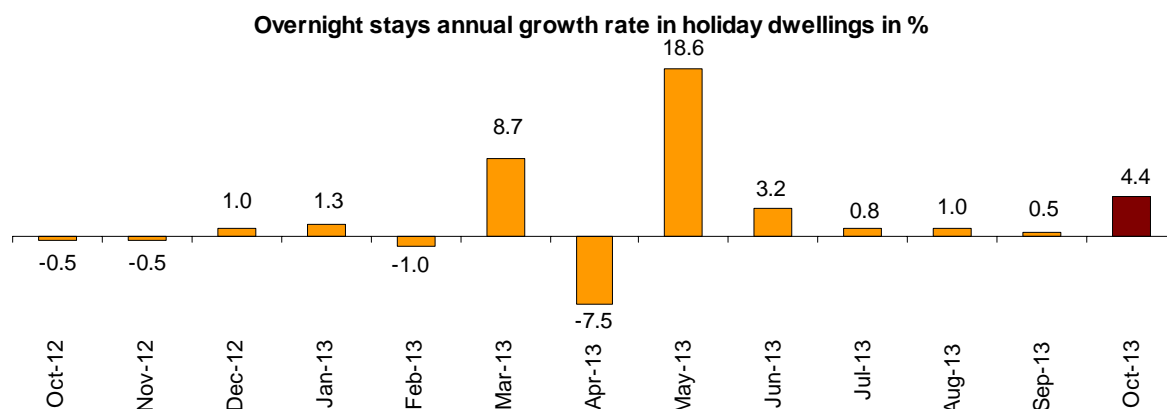
During the first ten months of 2013, the overnight stays increased 0.6%, as compared with the same period of the previous year.

Travellers and overnight stays in collective non-hotel tourist accommodation during the month of October were:

October 2013	Travellers	Overnight stays
Residents in Spain	532,873	1,549,709
EU (not including Spain)	545,838	4,419,644
Rest of the world	87,007	591,230
TOTAL	1,165,718	6,560,583

Holiday Dwellings

Overnight stays in holiday dwellings increased 4.4% in October. Overnight stays of residents increased 0.9% and overnight stays of non-residents increased 5.0%. The average stay decreased 1.3% standing at 6.9 overnights per traveller.

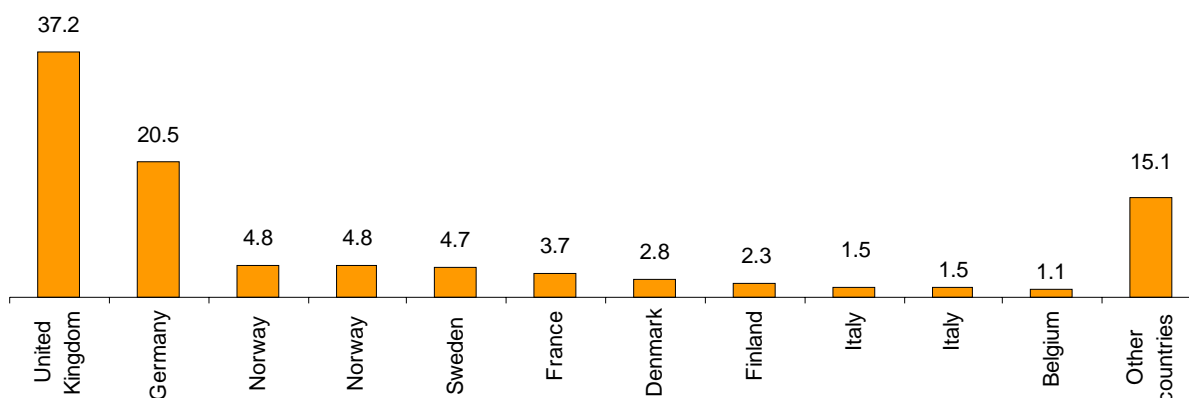


more than in the same month of 2012. The weekend occupancy rate by dwellings stood at 36.9%, with an annual increase of 2.7%.

⁽¹⁾ Due to the update made in the rural tourist accommodation directory in Región de Murcia, the data published cannot be directly compared to those published last year. In order to avoid this break in the series, linking coefficients have been calculated, allowing for comparing the data from different years. The coefficients are published monthly on the INE website, in the section dedicated to this statistical operation, in a specific section entitled linking coefficient

Non-resident overnight stays in holiday dwellings represented 85.2% of the total. The United Kingdom was the main country of origin, with more than 1.5 million overnight stays, 0.7% less than in October 2012. The following country of origin was Germany, with 840,710 overnight stays, 17.4% more.

Distribution of overnight stays of residents abroad of the 11 main countries by origin



Canarias and Illes Balears were the preferred holiday dwelling destinations, with annual rates of overnight stays of 1.1% and 7.4%, respectively. Canarias registered the highest occupancy rate with 66.1% of the dwellings offered.

By tourist area, the island of Tenerife was the preferred destination, with 800,582 overnight stays. Catalunya Central reached the highest occupancy rate with 87.3% of the dwellings offered.

The tourist sites with the greatest number of overnight stays were San Bartolomé de Tirajana, Arona and Tías.

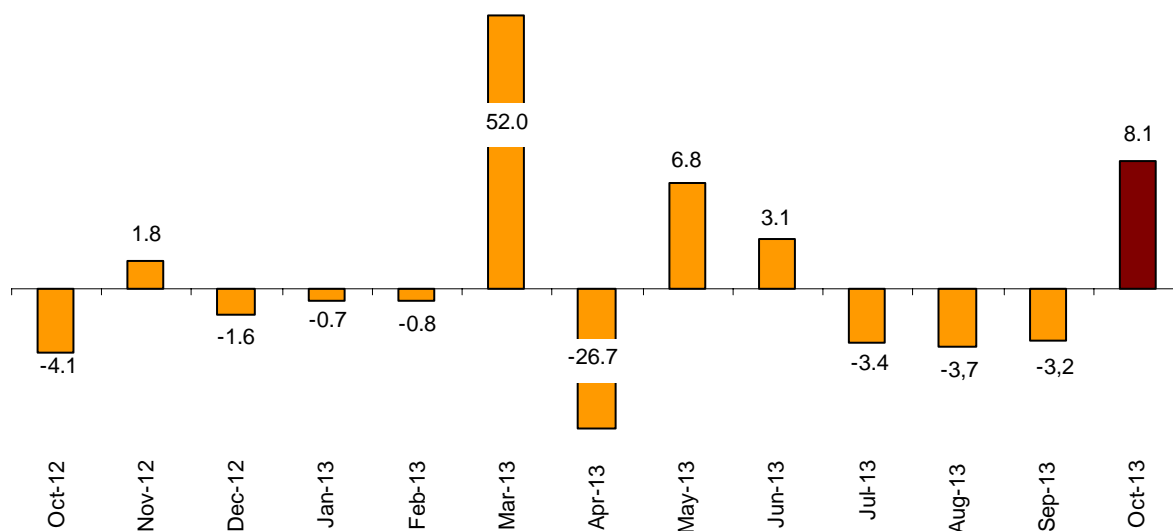
Campsites

The overnight stays in tourist campsites registered a 8.1% annual decrease in October. Overnight stays by resident travellers increased 6.4%, and those of non-resident travellers increased 9.2%.

During the month of October, 31.7% of the offered pitches were occupied, 0.6% more. The weekend occupancy rate by pitch reached 34.2%, with an annual decrease of 1.8%.

61.5% of the overnight stays on tourist campsites were by non-residents. The United Kingdom was the main country of origin, with 30.1% of the overnight stays by non-residents, 12.5% more than in October 2012.

Overnight stays annual growth rate in campsites in %



Comunitat Valenciana was the preferred destination regarding campsites, with 431,819 overnight stays, 5.8% more than in October 2012. La Rioja reached the highest occupancy rate on campsites, with 56.7% of the pitches offered.

By tourist area, Costa Blanca was the preferred destination for camping, with 231,215 overnight stays and an occupancy rate of 63.0% of the pitches offered.

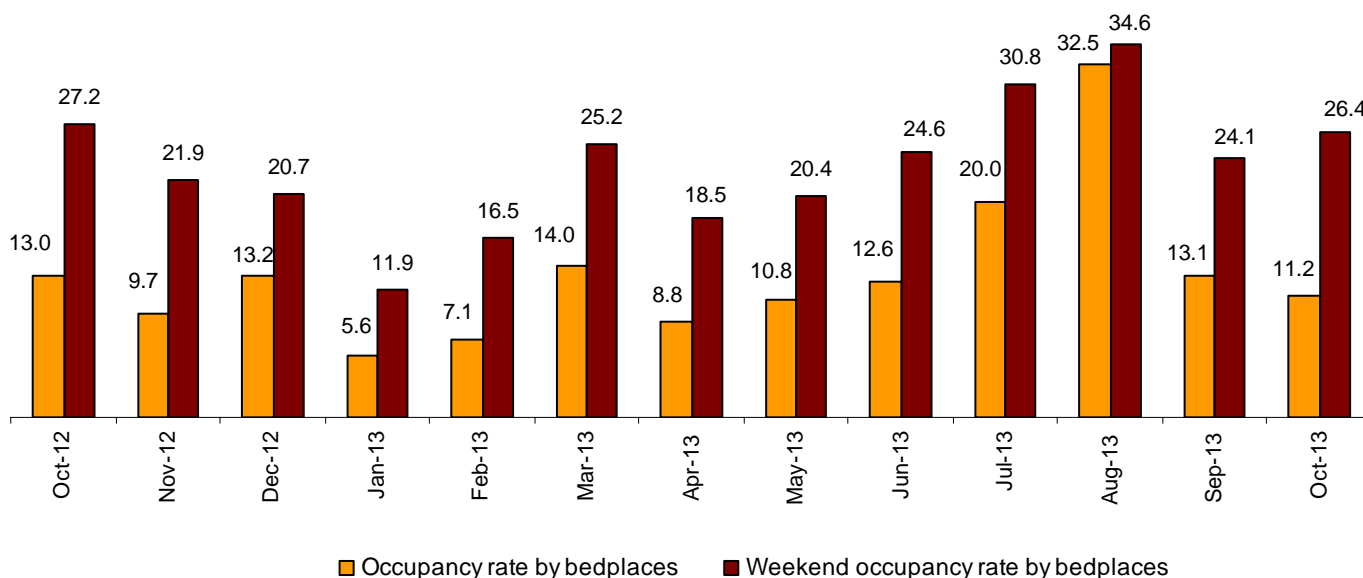
The tourist sites with the highest number of overnight stays were Benidorm, Cartagena and Mont-Roig del Camp.

Rural Tourism Accommodation

Overnight stays in rural tourism accommodation presented an annual decrease of 16.8%, in October ⁽¹⁾. Residents' overnight stays decreased 22.5% while those of non-residents increased 2.2%.

11.2% of the bedplaces in rural tourism accommodation were occupied, representing a 14.6% decrease, as compared to October 2012. The weekend occupancy rate stood at 26.4%, with a decrease of 3.4%.

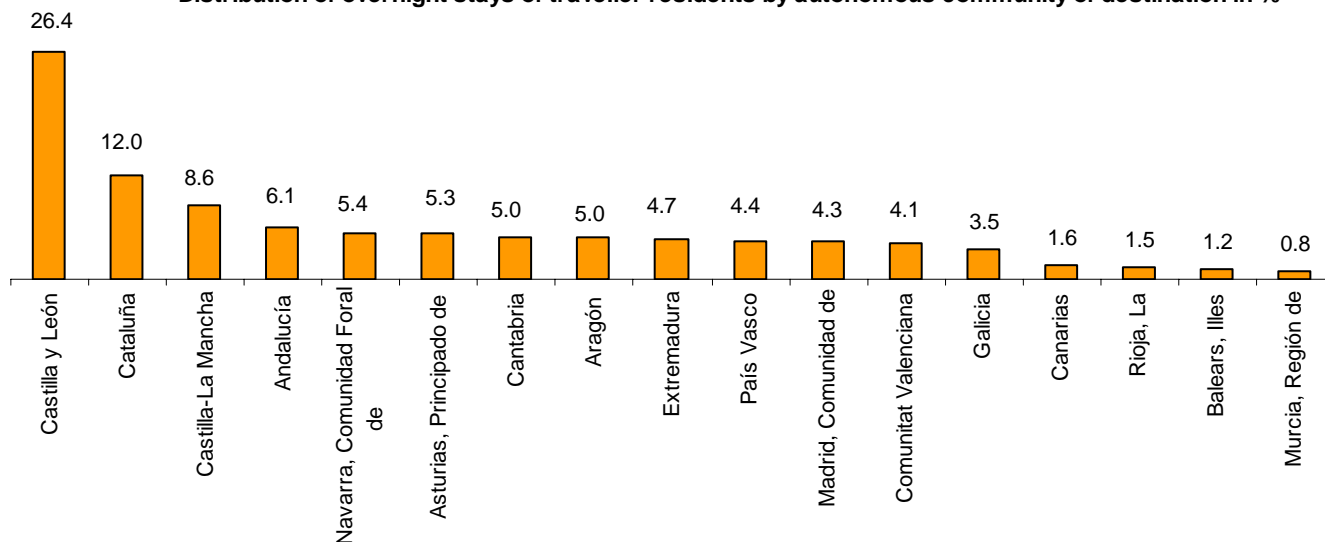
Occupancy rate by bedplaces and bedplaces on weekends



By Autonomous Community, Castilla y León was the preferred destination, with 97,538 overnight stays, 21.7% less than in October 2012. Illes Balears reached the highest occupancy rate as well, with 46.2% of the offered bedplaces.

By tourist area, the island of Mallorca was the main destination, with 61,540 overnight stays and an occupancy rate that stood at 49.6%.

Distribution of overnight stays of traveller residents by autonomous community of destination in %



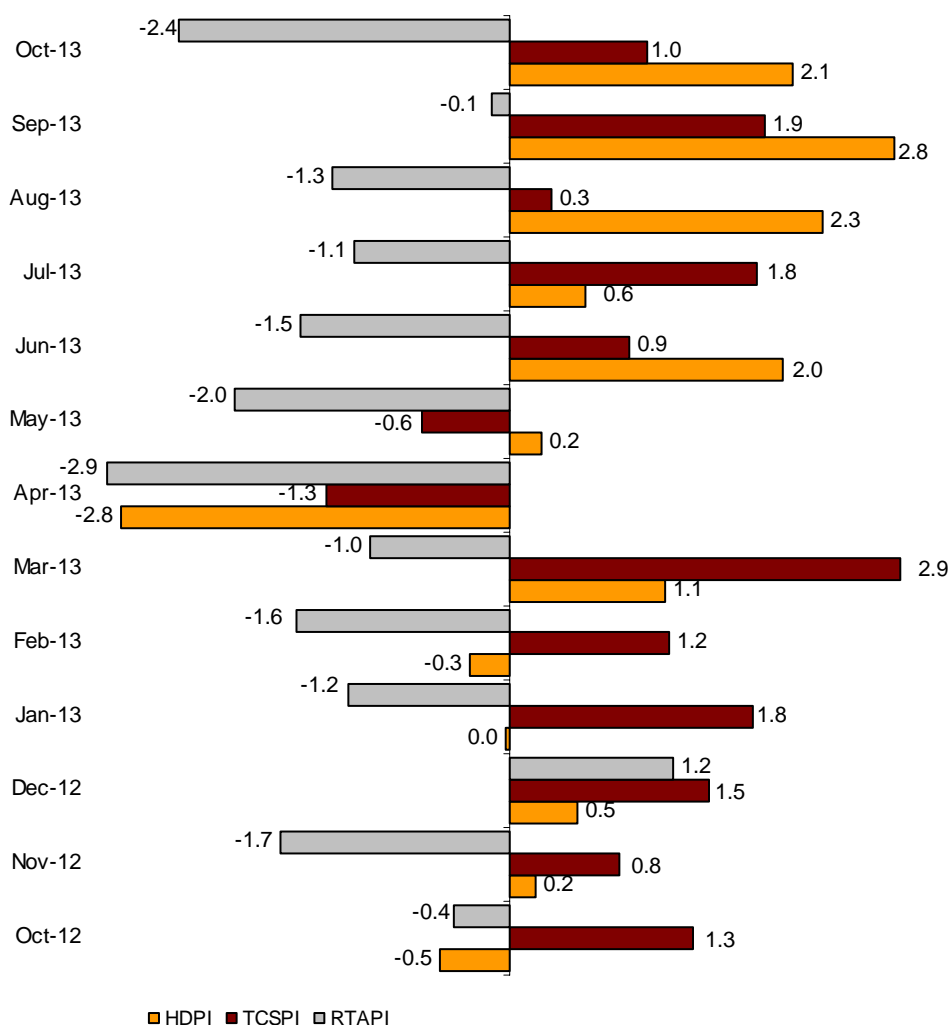
Price Indices

The Holiday Dwelling Price Index (HDPI) registered an increase of 2.1%, as compared to October 2012. The tour operators and travel agencies rate, which carried the greatest weight in the weighting structure for this month (53.0%), increased 3.5%.

The Tourist Campsite Price Index (TCPI) increased 1.0% in the annual rate. The normal rate, which had the greatest weight in the weighting structure for September (58.6%), increased by 0.4%.

The Rural Tourism Accommodation Price Index (RTAPI) registered a 2.4% decrease in October. The weekend rate, which accounted for 64.3% of the total weight, decreased 3.0%.

Price Indices. Annual variation rates



Evolution of travellers and overnight stays in all Spanish collective tourist accommodation

Overnight stays in Spanish collective tourist accommodation (hotels, holiday dwellings, campsites and rural tourism accommodation) registered a 4.4% increase in October ⁽¹⁾, as compared with the same month of the previous year. Overnight stays of residents decreased 0.6%, whereas those of non-residents increased 6.7%.

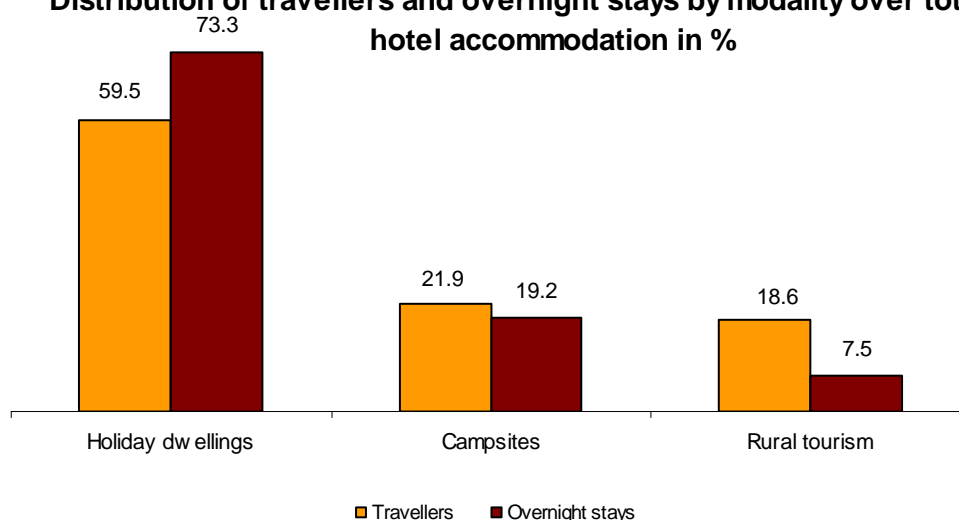
The average stay increases 1.3% as compared to October 2012, standing at 3.7 overnight stays per traveller.

Travellers and overnight stays in collective tourist accommodation were:

October 2013	Holiday dwellings	Campsites	Rural T.	Non-hotel	Hotels	Total
Travellers	693,586	254,982	217,150	1,165,718	7,474,296	8,640,014
Residents	181,596	168,891	182,386	532,873	3,525,006	4,057,879
Non-residents	511,990	86,091	34,764	632,845	3,949,290	4,582,135
Overnight stays	4,811,042	1,258,202	491,339	6,560,583	25,057,150	31,617,733
Residents	713,330	483,969	352,410	1,549,709	7,589,594	9,139,303
Non-residents	4,097,712	774,233	138,929	5,010,874	17,467,557	22,478,431

Of the total overnight stays in collective tourist accommodation, 79% were accounted for hotels, and 21% did so for non-hotel tourist accommodation.

Distribution of travellers and overnight stays by modality over total non-hotel accommodation in %



The main countries of origin in overall regulated tourist accommodation were the United Kingdom (with 28.1% of the total number of non-resident overnight stays), Germany (26.8%) and France (6.4%).

Canarias was the preferred destination regarding overall tourist accommodation, with over 7.7 million overnight stays (4.1% more than in October 2012). Followed by Illes Balears, with over 5.7 million overnight stays (5.2% more) and Cataluña, with over 4.7 million overnight stays (7.6% more).

Tourist Accommodation Occupancy Survey (Holiday Dwellings)

October 2013 Provisional data

1. Travellers, overnight stays and average stay by Autonomous Cities and Communities

Autonomous Cities and Communities	Travellers			Overnight stays			Average stay
	Total	Residents in Spain	Residents abroad	Total	Residents in Spain	Residents abroad	
TOTAL	693,586	181,596	511,990	4,811,042	713,330	4,097,712	6.94
Andalucía	105,515	34,163	71,352	544,171	99,024	445,147	5.16
Aragón	9,452	8,084	1,368	25,535	19,335	6,200	2.70
Asturias, Principado de	2,467	2,219	249	6,817	5,898	919	2.76
Balears, Illes	87,918	6,659	81,259	718,069	30,337	687,733	8.17
Canarias	297,809	41,845	255,964	2,431,766	188,173	2,243,593	8.17
Cantabria	4,705	4,073	632	12,204	10,259	1,945	2.59
Castilla y León	7,026	6,738	289	16,504	15,748	756	2.35
Castilla - La Mancha	6,720	6,250	470	15,968	13,597	2,371	2.38
Cataluña	50,970	19,500	31,470	316,802	125,185	191,617	6.22
Comunitat Valenciana	73,624	21,285	52,339	522,104	91,823	430,281	7.09
Extremadura	1,863	1,653	210	3,755	3,331	424	2.02
Galicia	3,786	3,150	636	11,314	9,436	1,878	2.99
Madrid, Comunidad de	26,459	15,128	11,330	111,132	55,190	55,942	4.20
Murcia, Región de	5,809	3,031	2,777	44,875	22,432	22,444	7.73
Navarra, Comunidad Foral de	4,293	3,773	520	13,114	11,002	2,112	3.05
País Vasco	2,673	1,730	943	11,662	7,667	3,995	4.36
Rioja, La	2,497	2,315	182	5,248	4,894	355	2.10
Ceuta	-	-	-	-	-	-	-
Melilla	-	-	-	-	-	-	-
Annual rate	5.73	3.54	6.52	4.35	0.94	4.97	-1.30
Cumulative annual rate	3.90	2.84	4.46	2.51	-1.61	3.86	-1.34

2. Capacity, occupancy and number of staff by Autonomous Cities and Communities

Autonomous Cities and Communities	Capacity		Level of occupancy				Employed personnel
	Estimated bedplaces	Estimated Holiday dwelling	Per bedplaces	Per bedplaces at weekend	Per Holiday dwelling	Per Holiday dwelling at weekend	
TOTAL	450,815	124,414	34.28	36.92	52.92	56.03	23,291
Andalucía	56,754	14,551	30.87	34.74	48.74	54.30	3,126
Aragón	6,305	1,449	13.04	24.28	20.83	33.57	433
Asturias, Principado de	3,583	902	6.14	9.92	10.22	14.72	224
Balears, Illes	60,206	19,094	38.21	40.58	50.34	52.93	3,991
Canarias	168,282	52,352	46.34	47.37	66.10	67.52	9,492
Cantabria	2,862	803	13.75	24.38	21.88	33.69	160
Castilla y León	4,677	1,007	11.35	25.12	18.75	33.18	418
Castilla - La Mancha	4,609	1,156	11.17	23.16	16.61	30.93	364
Cataluña	45,438	10,424	22.47	25.00	38.20	40.67	1,432
Comunitat Valenciana	71,524	14,920	23.56	25.77	42.54	45.99	2,038
Extremadura	1,503	365	8.04	12.66	12.29	18.58	137
Galicia	3,189	886	11.41	16.17	21.86	26.97	200
Madrid, Comunidad de	8,254	3,384	43.23	49.92	58.24	63.11	477
Murcia, Región de	9,146	2,023	15.83	17.31	30.09	32.24	316
Navarra, Comunidad Foral de	1,935	438	21.79	30.36	36.40	42.75	310
País Vasco	1,524	428	24.57	34.60	49.30	59.45	83
Rioja, La	1,025	231	16.44	42.94	23.36	53.53	90
Ceuta	-	-	-	-	-	-	-
Melilla	-	-	-	-	-	-	-
Annual rate	0.21	-0.19	4.14	2.67	6.07	4.72	2.47
Cumulative annual rate	2.11	2.19	0.44	0.60	1.05	1.20	3.64

3. Travellers, overnight stays, capacity, occupancy, total number of staff with greater number of overnight stays *

Provinces	Travellers		Overnight stays		Average stay	Capacity		Level of occupancy			Employed personnel
	Residents in Spain	Residents abroad	Residents in Spain	Residents abroad		Estimated bed-places	Estimated holiday dwelling	Per bed-places	Per Holiday dwelling	Per Holiday dwelling at weekend	
Palmas, Las	25,209	168,389	120,761	1,452,791	8.13	113,675	35,409	44.34	64.64	66.33	5,769
Santa Cruz de Tenerife	16,636	87,575	67,412	790,802	8.24	54,607	16,942	50.51	69.16	70.02	3,723
Alicante\Alacant	12,492	43,602	61,773	383,629	7.94	55,244	11,648	26.00	47.02	50.07	1,626
Málaga	6,524	48,577	26,540	361,976	7.05	30,576	7,663	41.10	65.59	68.13	1,799
Barcelona	9,962	19,400	89,265	104,103	6.59	12,190	3,606	51.14	69.94	71.85	595
Tarragona	5,562	6,988	24,199	50,195	5.93	14,029	2,746	17.11	28.62	31.10	282
Sevilla	9,167	11,333	23,885	34,477	2.85	4,528	1,522	40.73	55.51	67.08	270
Valencia\València	6,585	7,812	20,238	30,115	3.50	7,781	1,669	20.85	34.63	40.64	278
Girona	3,117	4,982	9,765	37,012	5.78	17,376	3,719	8.68	17.49	20.26	470
Granada	6,461	4,097	18,928	14,344	3.15	4,404	1,189	24.12	36.21	48.79	342
Castellón\Castelló	2,208	924	9,812	16,537	8.41	8,498	1,604	10.09	17.95	21.60	134
Almería	3,237	1,780	10,917	15,164	5.20	5,951	1,456	14.14	23.53	28.56	103
Cádiz	3,315	3,697	7,910	14,046	3.13	5,584	1,385	12.63	20.13	25.99	376
Zaragoza	2,506	1,085	5,955	4,513	2.91	1,047	290	32.17	51.88	65.59	73
Huesca	3,263	99	8,160	906	2.70	3,426	744	8.53	10.96	23.16	247

4. Travellers, overnight stays, capacity, occupancy, total number of staff from tourist areas with greater number of overnight stays

Tourist Areas	Travellers		Overnight stays		Average stay	Capacity		Level of occupancy			Employed personnel
	Residents in Spain	Residents abroad	Residents in Spain	Residents abroad		Estimated bed-places	Estimated holiday dwelling	Per bed-places	Per Holiday dwelling	Per Holiday dwelling at weekend	
Isla de Tenerife	13,102	83,516	52,338	748,244	8.29	48,015	14,693	53.60	73.44	74.19	3,228
Isla de Gran Canaria	11,007	75,388	49,096	674,665	8.38	56,697	18,312	40.99	59.74	61.69	2,591
Isla de Lanzarote	8,439	70,609	49,514	569,867	7.84	40,177	11,919	49.43	71.53	72.77	2,374
Isla de Mallorca	2,151	60,952	8,940	502,923	8.11	36,228	11,631	45.29	58.35	60.98	2,581
Costa Blanca	11,953	43,391	60,558	382,221	8.00	53,781	11,364	26.55	47.80	50.73	1,548
Costa del Sol	5,614	47,030	24,748	355,620	7.23	28,835	7,249	42.53	67.77	70.05	1,722
Isla de Fuerteventura	5,763	22,392	22,151	208,259	8.18	16,800	5,179	43.51	66.11	67.87	804
Islas de Ibiza-Formentera	3,979	16,058	18,453	142,120	8.01	16,223	5,199	31.68	43.15	46.17	978
Catalunya Central	1,960	146	59,358	14,221	31.00	2,833	1,008	83.68	87.31	88.38	64
Costa Daurada	5,095	6,980	23,173	50,187	6.08	13,468	2,632	17.57	29.37	31.84	240

5. Travellers, overnight stays, capacity, occupancy, total number of staff from tourist sites with greater number at overnights stays

Tourist sites	Travellers		Overnight stays		Average stay	Capacity		Level of occupancy			Employed personnel
	Residents in Spain	Residents abroad	Residents in Spain	Residents abroad		Estimated bed-places	Estimated holiday dwelling	Per bed-places	Per Holiday dwelling	Per Holiday dwelling at weekend	
San Bartolomé de Tirajana	8,359	47,428	39,037	443,367	8.65	37,410	11,790	41.38	62.86	64.99	1,670
Arona	2,689	38,281	11,234	344,071	8.67	20,338	6,378	56.27	74.83	75.13	1,334
Tías	4,283	37,717	25,498	307,282	7.92	20,678	6,576	51.37	71.43	71.99	1,072
Adeje	2,809	26,376	12,065	243,271	8.75	14,490	4,083	56.62	78.65	79.15	956
Benidorm	3,579	24,750	33,272	210,557	8.61	18,768	4,602	41.88	66.61	70.35	797
Mogán	1,295	26,967	4,458	227,044	8.19	17,978	6,001	41.44	54.74	56.14	849
Teguise	3,231	17,796	18,274	151,005	8.05	12,104	3,424	45.06	71.57	72.95	756
Madrid	14,880	11,440	51,160	54,570	4.02	7,571	3,107	44.80	59.78	64.75	406
Calvià	147	12,484	451	104,139	8.28	7,204	2,417	46.60	62.09	65.69	538
Mijas	506	12,454	2,997	98,199	7.81	7,307	1,384	44.64	80.74	79.03	514

* Provinces belonging to uniprovincial Autonomous Communities have not been included because they are reflected in previous tables.

6. Travellers and overnight stays by countries of residence

Countries	Travellers		Overnight stays	
	Total	%	Total	%
TOTAL	693,586	100.00	4,811,042	100.00
Residents in Spain	181,596	26.18	713,330	14.83
Residents abroad	511,990	73.82	4,097,712	85.17
Total residents abroad	511,990	100.00	4,097,712	100.00
Total residents in E.U (excluding Spain)	438,082	85.56	3,568,738	87.09
- Germany	87,327	17.06	840,710	20.52
- Austria	1,954	0.38	18,058	0.44
- Belgium	5,831	1.14	46,892	1.14
-Denmark	13,803	2.70	116,082	2.83
- Finland	13,608	2.66	92,914	2.27
- France	24,663	4.82	150,843	3.68
- Greece	320	0.06	2,212	0.05
- Ireland	24,315	4.75	182,464	4.45
- Italy	11,850	2.31	59,959	1.46
- Luxembourg	1,019	0.20	6,685	0.16
- Netherlands	27,239	5.32	231,933	5.66
- Poland	3,662	0.72	24,556	0.60
- Portugal	2,420	0.47	25,389	0.62
- United Kingdom	187,226	36.57	1,525,746	37.23
- Czech Republic	1,414	0.28	10,791	0.26
- Sweden	25,518	4.98	191,971	4.68
- Other EU countries	5,911	1.15	41,532	1.01
Norway	23,015	4.50	196,339	4.79
Other european countries	23,431	4.58	179,697	4.39
United States of America	5,451	1.06	26,602	0.65
Rest of America	8,905	1.74	57,559	1.40
African countries	2,362	0.46	16,418	0.40
Other countries	10,744	2.10	52,359	1.28

Tourist Accommodation Occupancy Survey

Campsite Occupancy Survey (COS)

October 2013

Provisional data

1. Travellers, overnight stays and average stay by category of establishment

Category	Travellers			Overnight stays			Average stay
	Total	Residents in Spain	Residents abroad	Total	Residents in Spain	Residents abroad	
TOTAL	254,982	168,891	86,091	1,258,202	483,969	774,233	4.93
Luxury and first-class	105,890	61,171	44,719	554,537	196,549	357,988	5.24
Second-class	122,678	85,168	37,510	650,272	245,636	404,636	5.30
Third-class	26,414	22,551	3,862	53,393	41,784	11,609	2.02
Annual rate	14.05	10.76	21.13	8.12	6.41	9.22	-5.20
Cumulative annual rate	1.42	-0.18	4.81	-1.15	-4.83	3.19	-2.53

2. Open establishments, capacity, occupancy and number of staff by category of establishments

Category	Estimated open establishments	Capacity		Occupied pitches	Occupancy rate per pitch	Weekend occupancy rate	Employed personnel
		Estimated bedplaces	Estimated pitches				
TOTAL	603	388,905	120,453	1,182,000	31.65	34.22	3,809
Luxury and first-class	163	162,353	49,723	445,333	28.89	31.51	1,743
Second-class	336	195,044	61,067	629,173	33.24	35.37	1,762
Third-class	104	31,508	9,663	107,494	35.88	39.11	303
Annual rate	2.36	3.27	2.21	2.86	0.64	-1.83	2.60
Cumulative annual rate	0.48	1.07	0.45	0.68	0.35	-0.93	0.56

3. Travellers, overnight stays and average stay by Autonomous Cities and Communities

Autonomous cities and communities	Travellers			Overnight stays			Average stay
	Total	Residents in Spain	Residents abroad	Total	Residents in Spain	Residents abroad	
TOTAL	254,982	168,891	86,091	1,258,202	483,969	774,233	4.93
Andalucía	38,481	18,602	19,879	174,723	72,044	102,679	4.54
Aragón	11,754	7,473	4,281	31,366	19,045	12,321	2.67
Asturias, Principado de	2,559	1,800	759	4,652	3,309	1,343	1.82
Balears, Illes*	-	-	-	-	-	-	-
Canarias*	-	-	-	-	-	-	-
Cantabria	6,522	5,805	718	15,494	13,948	1,547	2.38
Castilla y León	9,869	6,744	3,126	18,154	13,391	4,763	1.84
Castilla - La Mancha	3,899	3,153	745	7,027	5,660	1,367	1.80
Cataluña	91,831	68,513	23,318	395,234	206,523	188,711	4.30
Comunitat Valenciana	40,209	20,627	19,582	431,819	71,094	360,725	10.74
Extremadura	4,661	3,098	1,563	8,317	5,335	2,982	1.78
Galicia	915	657	258	1,652	1,090	562	1.80
Madrid, Comunidad de	15,740	12,711	3,029	36,970	28,657	8,314	2.35
Murcia, Región de	7,997	4,106	3,891	85,246	11,513	73,733	10.66
Navarra, Comunidad Foral de	6,935	5,898	1,037	12,521	10,949	1,572	1.81
País Vasco	5,730	3,156	2,574	13,980	7,596	6,385	2.44
Rioja, La	6,411	5,459	952	13,016	11,109	1,907	2.03
Ceuta	-	-	-	-	-	-	-
Melilla	-	-	-	-	-	-	-

* The size of the sample in these communities does not facilitate the INE the broken down results, with the objective of maintaining statistical secrecy. Nevertheless, the data corresponding to these communities are included in the national total.

4. Open establishments, capacity, occupancy and number of staff by autonomous cities and communities

Autonomous cities and communities	Estimated open establishments	Capacity		Occupied pitches	Occupancy rate per pitch	Weekend occupancy rate	Employed personnel
		Estimated bedplaces	Estimated pitches				
TOTAL	603	388,905	120,453	1,182,000	31.65	34.22	3,809
Andalucía	112	66,731	21,097	130,593	19.97	21.35	685
Aragón	63	23,938	7,276	43,594	19.33	21.62	214
Asturias, Principado de	11	6,672	2,020	12,118	19.35	24.90	39
Balears, Illes*	-	-	-	-	-	-	-
Canarias*	-	-	-	-	-	-	-
Cantabria	17	12,074	4,207	48,474	37.17	38.44	54
Castilla y León	43	18,780	5,689	34,045	19.30	22.95	113
Castilla - La Mancha	19	7,270	2,148	17,503	26.29	25.80	63
Cataluña	130	114,989	34,606	330,972	30.85	35.73	1,109
Comunitat Valenciana	87	62,846	19,758	300,815	49.11	50.17	783
Extremadura	15	5,195	1,731	13,313	24.81	27.34	92
Galicia	20	6,522	2,035	4,962	7.87	8.53	74
Madrid, Comunidad de	19	17,334	5,795	89,199	49.66	48.86	173
Murcia, Región de	18	14,981	4,929	52,823	34.57	37.31	149
Navarra, Comunidad Foral de	17	11,354	2,757	32,365	37.86	37.39	92
País Vasco	15	7,902	2,377	22,466	30.49	35.16	78
Rioja, La	8	7,933	2,403	42,222	56.68	59.90	54
Ceuta	-	-	-	-	-	-	-
Melilla	-	-	-	-	-	-	-

5. Travellers and overnight stays, average stay, capacity, occupancy and number of staff by provinces with the greatest number of overnight stays**

Provinces	Travellers		Overnight stays		Average stay	Estimated open establishments	Estimated pitches	Occupancy rate per pitch	Employed personnel
	Residents in Spain	Residents abroad	Residents in Spain	Residents abroad					
	Alicante\Alacant	6,493	9,316	29,680					
Tarragona	18,023	6,885	102,891	67,678	6.85	33	13,687	28.02	460
Barcelona	28,233	5,691	60,793	46,690	3.17	31	7,689	34.90	234
Castellón\Castelló	5,133	7,645	17,659	89,745	8.40	30	5,746	41.55	216
Girona	14,996	10,291	28,903	73,184	4.04	41	9,138	28.57	330
Málaga	2,451	6,543	11,869	53,509	7.27	27	4,630	29.08	160
Valencian\València	9,001	2,620	23,755	34,969	5.05	25	5,036	44.52	196
Huelva	5,623	709	33,482	2,903	5.75	9	4,577	21.18	92
Almería	1,873	2,371	10,111	15,876	6.12	18	2,543	18.08	99
Cádiz	2,279	4,559	4,800	15,454	2.96	15	3,814	18.32	136
Lleida	7,262	450	13,935	1,159	1.96	25	4,092	37.82	86
Huesca	5,109	1,739	10,778	4,142	2.18	40	5,010	21.88	150
Granada	1,829	3,219	3,507	10,206	2.72	20	2,391	12.99	107
Zaragoza	917	2,278	5,152	7,581	3.99	11	1,208	19.78	40
Gipúzkoa	1,495	2,020	3,565	5,233	2.50	8	1,393	24.67	37

* The size of the sample in these communities does not facilitate the INE the broken down results, with the objective of maintaining statistical secrecy. Nevertheless, the data corresponding to these communities are included in the national total.

** Provinces belonging to uniprovincial Autonomous Communities have not been included because they are reflected in previous tables.

6. Travellers, overnight stays, average stay, open establishments, capacity, occupancy and number of staff from tourist areas with the greatest number of overnight stays

Tourist areas	Travellers		Overnight stays		Average stay	Estimated open establishments	Estimated pitches	Occupancy rate per pitch	Employed personnel
	Residents in	Residents abroad	Residents in	Residents abroad					
	Spain		Spain						
Costa Blanca	4,460	7,203	16,916	214,299	19.82	25	6,800	62.97	307
Costa Daurada	16,380	5,687	96,277	58,481	7.01	24	12,327	28.43	413
Costa de Castellón	3,160	7,209	14,987	88,478	9.98	25	5,335	42.43	204
Costa Brava	8,960	10,180	18,882	72,669	4.78	29	7,757	25.68	278
Costa Barcelona	16,120	5,548	36,987	46,101	3.83	13	5,588	28.09	155
Costa Cálida	1,337	3,238	4,292	69,774	16.19	9	3,863	36.95	113
Costa del Sol	1,465	4,276	10,165	48,675	10.25	12	3,275	36.02	115
P.N. Aiguamolls de l'Empordà	691	5,311	1,703	51,618	8.88	6	2,354	32.07	102
Costa Valencia	4,163	2,156	14,192	33,516	7.55	11	3,200	45.55	131
Pirineus	20,902	533	38,817	1,523	1.88	45	6,119	42.35	160
Costa de la Luz (Huelva)	4,192	654	31,444	2,697	7.05	6	4,052	19.03	72
Costa de Almería	1,606	2,303	9,500	14,077	6.03	12	2,089	17.27	71
Costa de la Luz (Cádiz)	1,727	3,552	3,937	13,649	3.33	12	3,241	17.57	118
Terres de l'Ebre	1,643	1,198	6,614	9,196	5.56	8	1,360	24.28	46
Pirineo Aragonés	4,891	1,570	10,528	3,910	2.23	33	4,607	21.09	139

7. Travellers, overnight stays, average stay, open establishments, capacity, occupancy and number of staff from tourist sites with the greatest number at overnights stays

Tourist sites	Travellers		Overnight stays		Average stay	Estimated open establishments	Estimated pitches	Occupancy rate per pitch	Employed personnel
	Residents in	Residents abroad	Residents in	Residents abroad					
	Spain		Spain						
Benidorm	825	2,398	6,246	128,611	31.00	9	3,812	66.30	131
Cartagena	421	1,832	1,656	45,628	20.99	3	2,537	30.78	64
Mont-Roig del Camp	2,146	2,498	17,349	28,468	9.87	5	3,848	18.58	110
Oliva	489	1,822	3,562	29,666	14.38	6	1,412	39.50	90
Marbella	523	1,847	6,883	25,354	13.60	3	1,310	37.64	49
Cabanes	186	1,511	996	25,326	15.51	3	964	43.91	51
Peñíscola	584	2,220	2,936	20,879	8.49	7	1,169	42.63	47
Mazarrón	282	1,171	1,582	21,006	15.55	3	874	50.41	35
Benicasim/Benicàssim	330	1,350	1,846	19,087	12.46	3	833	47.90	33
Malgrat de Mar	10,517	28	17,362	563	1.70	3	514	57.88	16
Vélez-Málaga	535	1,072	2,112	13,051	9.44	4	806	35.96	35
Blanes	3,237	1,277	8,649	5,909	3.23	5	1,387	31.00	48

8. Travellers and overnight stays by countries of residence

Countries	Travellers		Overnight stays	
	Total	%	Total	%
TOTAL	254,982	100.00	1,258,202	100.00
Residents in Spain	168,891	66.24	483,969	38.47
Residents abroad	86,091	33.76	774,233	61.53
TOTAL residents abroad	86,091	100.00	774,233	100.00
TOTAL residents in E.U. (excluding Spain)	79,708	92.59	730,097	94.30
- Germany	21,058	24.46	195,490	25.25
- Austria	684	0.79	4,882	0.63
- Belgium	2,797	3.25	33,140	4.28
- Denmark	1,024	1.19	13,270	1.71
- Finland	850	0.99	7,072	0.91
- France	17,760	20.63	75,514	9.75
- Greece	28	0.03	445	0.06
- Ireland	587	0.68	4,704	0.61
- Italy	942	1.09	3,348	0.43
- Luxembourg	189	0.22	1,032	0.13
- Netherlands	12,779	14.84	134,940	17.43
- Poland	675	0.78	2,044	0.26
- Portugal	519	0.60	1,402	0.18
- United Kingdom	17,008	19.76	232,893	30.08
- Czech Republic	178	0.21	649	0.08
- Sweden	1,796	2.09	17,404	2.25
- Other EU countries	832	0.97	1,869	0.24
Other European countries	4,370	5.08	37,513	4.85
United States of America	315	0.37	639	0.08
Rest of America	531	0.62	1,105	0.14
African countries	13	0.02	151	0.02
Other countries	1,155	1.34	4,728	0.61

**Tourist accommodation occupancy survey
(Rural tourist accommodation)**

October 2013

Provisional data

1. Number of travellers, overnight stays and average stay by Autonomous City and Community

Autonomous Communities	Number of travellers			Number of overnight stays			Average stay
	Total	Residents In Spain	Residents abroad	Total	Residents In Spain	Residents abroad	
TOTAL¹	217,150	182,386	34,764	491,340	352,410	138,929	2.26
Andalucía	15,914	10,459	5,455	48,250	21,611	26,639	3.03
Aragón	10,116	9,565	551	19,632	17,571	2,060	1.94
Asturias, Principado de	9,204	8,538	666	20,207	18,775	1,432	2.20
Balears, Illes	15,502	1,757	13,744	68,123	4,197	63,925	4.39
Canarias	4,663	1,617	3,046	26,011	5,537	20,474	5.58
Cantabria	10,402	9,181	1,221	19,747	17,594	2,152	1.90
Castilla y León	51,613	48,941	2,673	97,538	93,034	4,504	1.89
Castilla-La Mancha	15,886	15,693	194	31,401	30,243	1,158	1.98
Cataluña	22,781	21,349	1,433	46,567	42,321	4,247	2.04
Comunitat Valenciana	7,666	7,238	428	16,268	14,566	1,702	2.12
Extremadura	9,672	9,092	580	18,008	16,709	1,299	1.86
Galicia	10,213	7,554	2,659	16,205	12,317	3,888	1.59
Madrid, Comunidad de	10,130	9,817	313	16,159	15,244	915	1.60
Murcia, Región de ¹	1,985	1,786	199	3,624	2,892	732	1.83
Navarra, Comunidad Foral de	9,545	8,975	570	20,491	19,080	1,411	2.15
País Vasco	9,022	8,075	947	17,710	15,516	2,193	1.96
Rioja, La	2,835	2,748	87	5,400	5,203	197	1.90
Ceuta	-	-	-	-	-	-	-
Melilla	-	-	-	-	-	-	-
Annual rate	-11.00	-13.40	4.18	-16.78	-22.46	2.18	-6.50
Cumulative annual rate	-7.14	-8.85	1.76	-8.30	-10.44	-1.81	-1.25

2. Open rural establishments, bed-places, occupancy rates and employed personnel by Autonomous City and Community

Autonomous Communities	Estimated open rural establishments	Estimated bed-places	Occupancy rate			Employed personnel
			Of bed-places	Of bed-places at weekend	Of bedrooms	
TOTAL¹	15,175	140,973	11.21	26.38	13.95	21,907
Andalucía	1,505	12,981	11.96	21.40	16.16	2,106
Aragón	1,178	9,154	6.90	18.70	7.88	1,310
Asturias, Principado de	1,258	11,380	5.72	14.21	7.25	1,624
Balears, Illes	247	4,730	46.24	52.33	53.24	1,574
Canarias	640	3,914	21.40	23.12	32.17	919
Cantabria	318	5,736	11.08	27.57	13.35	447
Castilla y León	3,445	30,240	10.38	29.97	12.63	4,902
Castilla-La Mancha	1,391	11,898	8.50	27.11	10.60	1,876
Cataluña	1,662	13,449	11.15	34.64	13.93	2,145
Comunitat Valenciana	1,008	9,136	5.74	14.55	8.18	1,405
Extremadura	512	6,277	9.25	24.29	14.10	770
Galicia	544	6,798	7.68	16.72	8.52	829
Madrid, Comunidad de	233	3,852	13.50	32.07	16.83	526
Murcia, Región de ¹	118	1,775	6.58	15.45	8.62	161
Navarra, Comunidad Foral de	628	4,611	14.28	41.17	15.91	719
País Vasco	386	4,079	13.96	30.78	15.48	470
Rioja, La	103	964	17.93	54.31	18.35	123
Ceuta	-	-	-	-	-	-
Melilla	-	-	-	-	-	-
Annual rate	-1.99	-2.46	-14.56	-3.37	-8.92	0.03
Cumulative annual rate	-0.98	-0.99	-7.21	-2.34	-4.87	0.36

¹ Due to the updating in the directory of establishments carried out in Región de Murcia, the data to be published since January 2013 (for Navarra and the national total) are not directly comparable with the data published last year, therefore, data link coefficients have been calculated to allow the comparison of data between different years. These coefficients are available in INE website (www.ine.es)

3. Number of travellers, overnight stays and average stay in Provinces with the greatest number of overnight stays²

Provinces	Number of travellers			Number of overnight stays			Average stay
	Total	Residents In Spain	Residents abroad	Total	Residents In Spain	Residents abroad	
Málaga	4,382	1,648	2,734	20,823	3,499	17,324	4.75
Santa Cruz de Tenerife	3,320	1,032	2,287	19,604	3,863	15,741	5.91
Girona	9,663	8,978	685	19,236	17,743	1,493	1.99
Ávila	8,172	8,055	117	17,769	17,472	297	2.17
Segovia	9,359	9,153	206	16,135	15,791	343	1.72
Barcelona	7,706	7,379	327	15,760	14,178	1,582	2.05
Cáceres	8,075	7,638	437	15,279	14,342	937	1.89
Soria	7,160	7,050	110	13,850	13,455	395	1.93
León	6,399	5,365	1,034	11,241	10,059	1,182	1.76
Burgos	5,875	5,471	404	10,713	10,003	710	1.82
Salamanca	5,383	5,135	248	10,128	9,537	591	1.88
Lleida	3,703	3,611	92	8,544	8,120	424	2.31
Zamora	3,871	3,645	226	8,175	7,785	391	2.11
Huesca	3,956	3,676	280	8,163	7,306	858	2.06
Cuenca	3,849	3,762	87	8,078	7,262	816	2.10

4. Open rural establishments, bed-places, occupancy rates and employed personnel in Provinces with the highest number of overnight stays²

Provinces	Estimated open rural establishments	Estimated bed-places	Occupancy rate			Employed personnel
			Of bed-places	Of bed-places at weekend	Of bedrooms	
Málaga	614	4,121	16.23	23.03	23.02	698
Santa Cruz de Tenerife	518	2,958	21.35	22.61	33.10	725
Girona	541	4,480	13.82	45.33	18.16	735
Ávila	782	5,796	9.87	29.07	14.82	1,258
Segovia	396	3,636	14.25	47.68	15.65	572
Barcelona	417	3,673	13.80	45.66	16.27	582
Cáceres	446	5,467	9.01	24.12	13.79	651
Soria	335	3,121	14.25	41.02	16.11	444
León	463	3,919	9.23	21.27	10.84	686
Burgos	381	3,909	8.83	29.03	10.04	457
Salamanca	510	4,116	7.93	22.48	9.72	655
Lleida	507	3,609	7.63	19.46	10.06	607
Zamora	202	2,280	11.53	27.69	13.34	307
Huesca	605	4,478	5.87	15.81	6.39	665
Cuenca	282	2,919	8.91	26.95	11.23	376

² Provinces belonging to uniprovincial Autonomous Communities have not been included because they are reflected in previous tables.

5. Number of travellers, overnight stays, average stay, capacity and occupancy rates in areas with the highest number of overnight stays

Areas	Number of travellers		Number of overnight stays		Average stay	Capacity		Occupancy rate		
	Residents In Spain	Residents abroad	Residents In Spain	Residents abroad		Estimated open establishments	Estimated rural bed-places	Of bed-places	Of bed-places at weekend	Of bedrooms
Isla de Mallorca	1,234	12,541	2,653	58,887	4.47	212	3,982	49.61	55.38	57.26
Pirineo Navarro	8,617	162	18,300	257	2.11	574	4,218	14.14	41.88	15.88
Pirineus	8,266	159	16,940	691	2.09	676	5,101	11.14	36.31	13.66
Costa Brava	5,616	617	11,351	1,211	2.02	327	2,811	14.36	45.88	18.08
Isla de Tenerife	718	1,536	1,414	8,978	4.61	114	1,132	29.58	31.37	40.83
Pirineo Aragonés	3,848	294	7,599	870	2.04	550	4,132	6.60	18.33	7.10
Catalunya Central	3,897	231	7,154	989	1.97	258	2,170	12.08	36.93	14.64
P.Nacional Teide	561	1,162	1,103	6,903	4.65	76	815	31.68	34.63	41.11
P.Nacional Picos de Europa	3,252	365	7,110	784	2.18	238	2,247	11.31	26.17	12.39
P.Natural Sierras de Tejada, Almirajara y Alhama	26	794	297	6,490	8.27	89	632	34.63	36.54	47.32
Isla de La Palma	209	449	1,924	4,768	10.17	276	1,183	18.25	18.85	32.84
Costa Verde	2,316	211	5,973	459	2.54	425	4,352	4.76	9.86	7.43
Pirineo Vasco	2,476	161	4,821	395	1.98	134	1,380	12.15	32.01	13.06
P.Nacional Taburiente	175	251	1,429	2,908	10.19	156	693	20.19	20.67	36.10
Islas de Ibiza-Formentera	273	848	571	3,319	3.47	20	410	30.49	40.80	35.24

6. Number of travellers, overnight stays, average stay, capacity, occupancy rates and employed personnel per rural house by Autonomous City and Community³

Autonomous Communities	Number of travellers		Number of overnight stays		Average stay	Capacity		Occupancy rate		Employed personnel
	Residents In Spain	Residents abroad	Residents In Spain	Residents abroad		Estimated open establishments	Estimated rural bed-places	Of bed-places	Of bed-places at weekends	
TOTAL	111,793	14,642	228,102	64,308	2.31	12,453	96,397	9.76	25.06	16,128
Andalucía	9,290	4,900	19,572	25,283	3.16	1,481	12,176	11.86	21.37	2,033
Aragón	7,159	458	12,604	1,375	1.84	868	6,711	6.70	18.33	974
Asturias, Principado de	3,125	234	7,830	502	2.48	831	5,117	5.24	12.40	1,030
Balears, Illes	489	3,249	1,032	12,775	3.69	56	808	54.34	63.65	203
Canarias	652	1,444	3,744	12,223	7.62	610	3,052	16.85	18.37	765
Cantabria	2,344	50	4,665	218	2.04	128	2,069	7.60	20.20	142
Castilla y León	26,309	244	55,266	518	2.10	2,925	19,681	9.12	28.51	3,786
Castilla-La Mancha	14,858	120	28,839	863	1.98	1,354	11,130	8.59	27.62	1,816
Cataluña	16,486	973	33,526	2,873	2.08	1,393	10,605	11.05	34.44	1,770
Comunitat Valenciana	4,898	409	10,737	1,584	2.32	978	7,470	5.32	12.97	1,300
Extremadura	3,477	272	6,182	817	1.87	317	3,060	7.37	21.50	434
Galicia	4,182	977	7,280	1,560	1.71	391	4,621	6.17	13.78	545
Madrid, Comunidad de	1,120	30	1,853	90	1.69	67	621	10.08	36.35	93
Murcia, Región de	1,145	71	1,952	536	2.05	109	1,511	5.31	14.00	129
Navarra, Comunidad Foral de	8,975	570	19,080	1,411	2.15	628	4,611	14.28	41.17	719
País Vasco	4,535	555	8,737	1,483	2.01	214	2,189	15.02	33.96	265
Rioja, La	2,748	87	5,203	197	1.90	103	964	17.93	54.31	123
Ceuta	-	-	-	-	-	-	-	-	-	-
Melilla	-	-	-	-	-	-	-	-	-	-

³ To facilitate the comparability between data from different Autonomous Communities (and because of the different regulation and different characteristics), a group called rural house has been created, with those establishments with similar typology (location, capacity, etc...). The variables included in the previous table have been estimated with that type of establishments.

7. Travellers and overnight stays by country of residence

Results by countries	Travellers		Overnight stays	
	Total	%	Total	%
TOTAL	217,150	100.00	491,340	100.00
Residents Spain	182,386	83.99	352,410	71.72
Residents abroad	34,764	16.01	138,929	28.28
Total Residents abroad	34,764	100.00	138,929	100.00
Total Residents in EU (excluding Spain)	28,048	80.68	120,809	86.96
- Germany	11,899	34.23	66,124	47.60
- Belgium	1,061	3.05	2,895	2.08
- France	3,310	9.52	8,620	6.20
- Italy	617	1.78	1,734	1.25
- Netherlands	2,462	7.08	10,783	7.76
- Portugal	618	1.78	1,254	0.90
- United Kingdom	6,102	17.55	21,683	15.61
Switzerland	1,491	4.29	6,088	4.38
Other European countries	2,728	7.85	10,273	7.39
United States of America	1,942	5.59	4,359	3.14
Other countries	2,535	7.29	5,116	3.68

HOLIDAY DWELLING PRICE INDEX (HDPI)

October 2013

Provisional data

National general index and breakdown by rates

	Index	Annual variation rate
TOTAL	107.64	2.07
Normal	107.47	0.54
Weekend	111.53	-0.78
Tour-operators and travel agencies	108.76	3.53

National general index and breakdown by modalities

	Index	Annual variation rate
TOTAL	107.64	2.07
Studio	105.16	-0.35
Dwellings 2/4 bedplaces	105.70	2.21
Dwellings 4/6 bedplaces	120.44	3.69

**Tourist Campsite Price Index (TCSPI). 2002 Base
October 2013**

Provisional data

National general index and breakdown by rates

	Index	Annual variation rate
TOTAL	129.67	1.00
Normal rate	127.20	0.43
Special rate for stays up to one month	137.55	-0.57
Special rate for stays longer than one month	125.62	2.05

National general index and breakdown by categories

	Index	Annual variation rate
TOTAL	129.67	1.00
Luxury and first	125.86	0.19
Second	134.23	1.93
Third	100.21	-4.11

Rural Tourism Accommodation Price Index (RTAPI)

October 2013

Provisional data

General Autonomous Cities and Communities and national indices

	Index	Annual variation rate
TOTAL	126.08	-2.41
Andalucía	123.93	-2.23
Aragón	141.38	-1.63
Asturias, Principado de	120.81	-4.44
Balears, Illes	110.63	0.49
Canarias	113.41	0.09
Cantabria	151.74	-8.21
Castilla y León	128.77	-4.75
Castilla - La Mancha	108.86	-6.32
Cataluña	131.85	-3.39
Comunitat Valenciana	123.41	-2.31
Extremadura	102.42	-3.94
Galicia	120.47	-4.07
Madrid, Comunidad de	134.76	3.66
Murcia, Región de	142.75	9.55
Navarra, Comunidad Foral de	165.38	-2.47
País Vasco	138.00	-1.94
Rioja, La	130.22	-1.91
Ceuta	-	-
Melilla	-	-

National general index and breakdown by rates

	Index	Annual variation rate
TOTAL	126.08	-2.41
Normal	126.91	-1.40
Weekend	126.92	-2.97

National general index and breakdown by rent modality

	Index	Annual variation rate
TOTAL	126.08	-2.41
Shared use (in case of per room rent modality)	113.14	-1.66
Full use (rent of entire dwelling)	134.65	-3.02