

27 November 2015

Non-Hotel Tourist Accommodation Occupancy Survey

October 2015. *Provisional data*

Overnight stays in non-hotel tourist accommodation increase 12.3% in October as compared to the same month of 2014

Overnight stays in non-hotel tourist accommodation (holiday dwellings, tourist campsites, rural tourism accommodation and youth hostels) exceeded 7.9 million in October, that is, 12.3% more than in the same month of 2014. Overnight stays by resident travellers increased by 24.6% and those of non-residents did so by 8.1%.

The average stay stood at 5.0 overnight stays per traveller.

During the first ten months of 2015, overnight stays increased by 4.4% as compared with the same period of the previous year.

Travellers and overnight stays in collective non-hotel tourist accommodation during the month of October were:

October 2015	Travellers	Overnight stays
Residents in Spain	806,721	2,280,183
EU (not including Spain)	673,655	5,008,841
Rest of the world	123,188	676,293
TOTAL	1,603,564	7,965,317

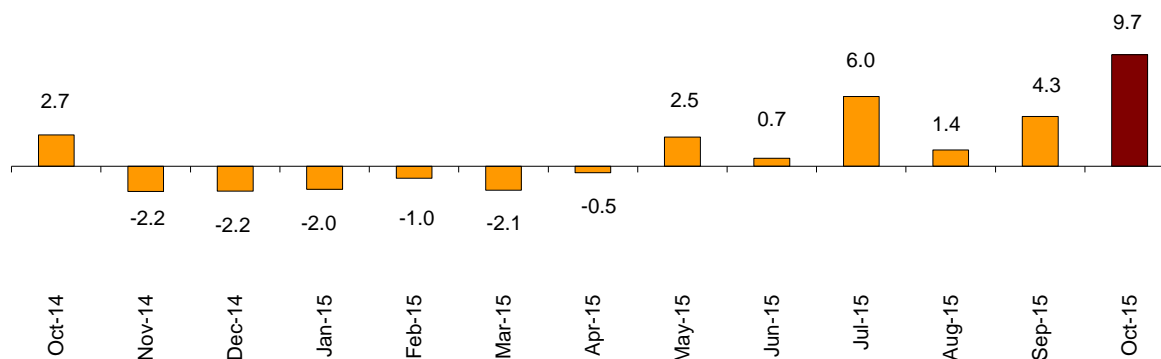
Holiday Dwellings

Overnight stays in holiday dwellings increased 9.7% in October. Those of residents increased by 27.2% and those of non-residents did so by 6.5%.

The average stay decreased 6.1% as compared with October 2014, and stood at 6.2 overnight stays per traveller.

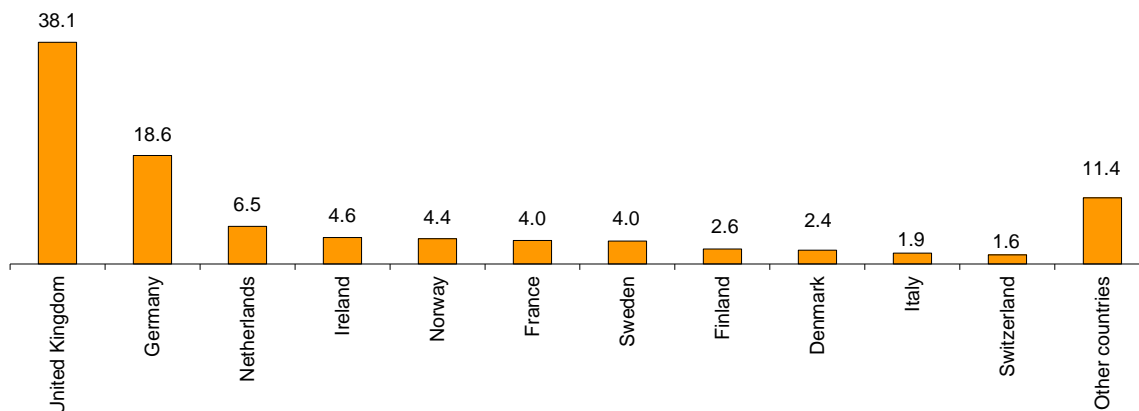
In October, 37.2% of the bedplaces available for holiday dwellings were occupied, 5.0% more than in the same month of 2014. The weekend occupancy rate by bedplaces stood at 40.1%, with an increase of 5.0%.

Overnight stays annual growth rate in holiday dwellings in %



Non-resident overnight stays in holiday dwellings represented 82.2% of the total. The United Kingdom was the main country of origin, with more than 1.7 million overnight stays, that is, 3.5% more than in October 2014. The following country of origin was Germany, with 833,850 overnight stays, that is, 5.0% more.

Distribution of overnight stays of residents abroad of the 11 main countries by origin



Canarias was the preferred holiday dwelling destination, with more than 2.5 million overnight stays, 3.5% more than in October 2014. Comunidad de Madrid registered the highest occupancy rate, with 82.0% of the holiday dwellings offered.

By tourist areas, the island of Tenerife was the preferred destination, with 847,116 overnight stays. The island of Lanzarote registered the highest occupancy rate, with 83.0% of the holiday dwellings offered.

The tourist sites with the greatest number of overnight stays in October were San Bartolomé de Tirajana, Arona and Tías.

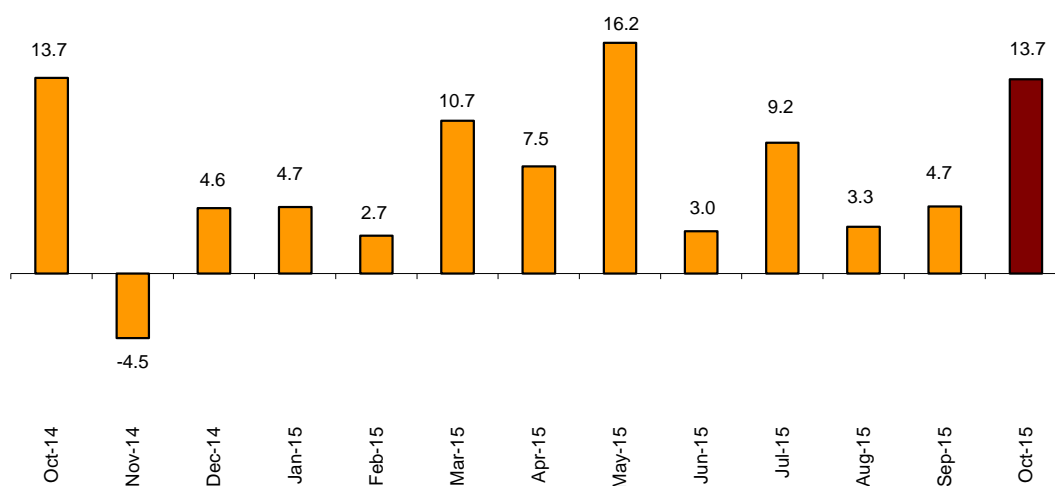
Tourist campsites

Overnight stays at tourist campsites registered an annual increase of 13.7% in October as compared to the same month of the previous year. Overnight stays by resident travellers increased by 12.7% and those of non-resident travellers did so by 14.3%.

In October, 34.8% of the offered pitches were occupied, that is, 6.7% more. The weekend occupancy rate by pitch reached 36.9%, with a 1.4% annual increase.

59.9% of the overnight stays at tourist campsites were by non-residents. United Kingdom was the main country of origin, with 29.6% of the overnight stays by non-residents, 21.4% more than in October 2014.

Overnight stays annual growth rate in campsites in %



Comunidad Valenciana was the preferred destination regarding tourist campsites, with more than 566,176 overnight stays, 18.9% more than in October 2014.

La Rioja was the Autonomous Community with the highest occupancy rate on tourist campsites, with 58.2% of the pitches offered.

By tourist areas, Costa Blanca was the preferred destination, with 314,544 overnight stays and an occupancy rate of 71.9% of the pitches offered.

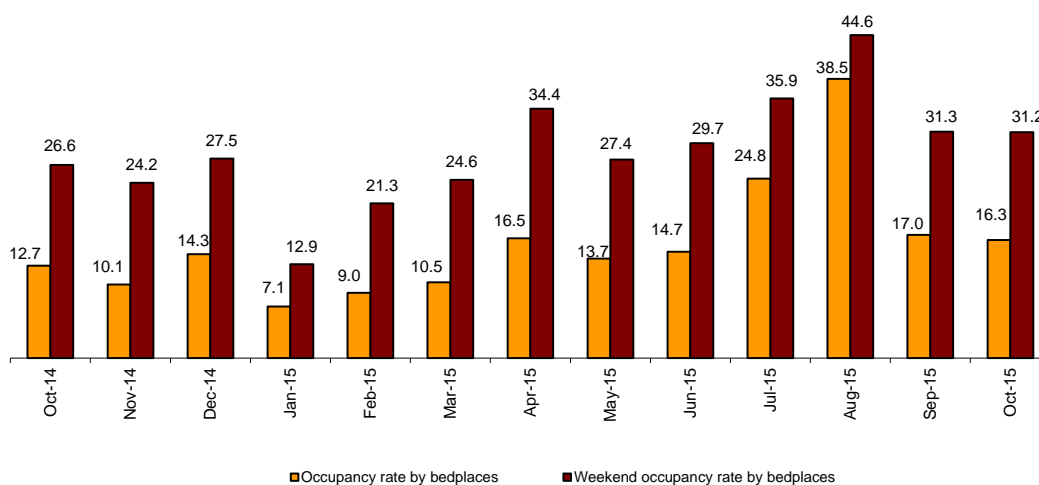
The tourist sites with the highest number of overnight stays were Benidorm, Mont-Roig Del Camp and Cartagena.

Rural Tourism Accommodation

Overnight stays in rural tourism accommodation presented an annual increase of 32.0% in October. Residents' overnight stays increased by 38.5% and those of non-residents did so by 15.2%.

Regarding rural tourism accommodation, 16.3% of the bedplaces were occupied, that is, a 27.8% increase as compared to October 2014. The weekend occupancy rate stood at 31.2%, with a 17.0% increase.

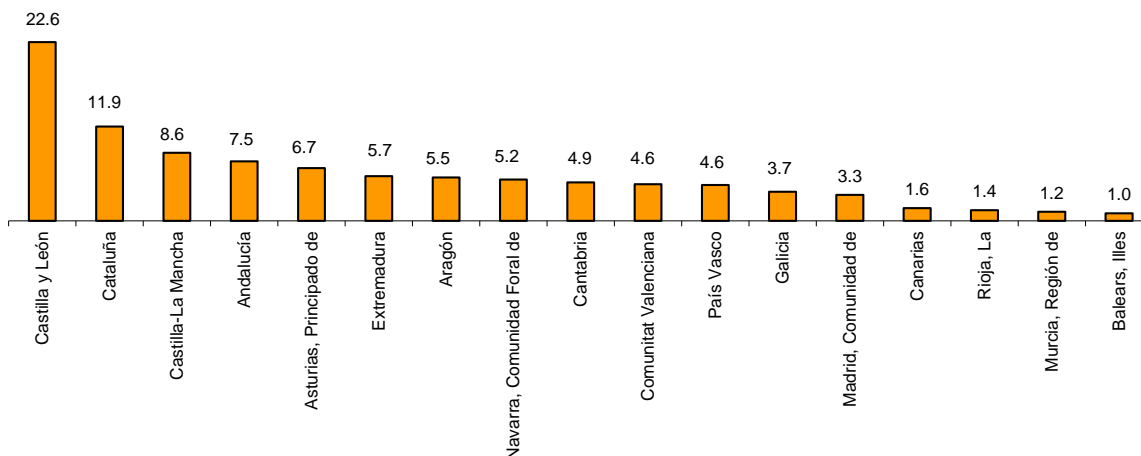
Occupancy rate by bedplaces and bedplaces on weekends



By Autonomous Community, Castilla y León was the preferred destination, with 135,857 overnight stays, 14.9% more than in October 2014. Illes Balears also reached the highest occupancy rate, with 46.6% of the bedplaces offered.

By tourist area, the island of Mallorca was the main destination, with 76,816 overnight stays, and an occupancy rate of 49.7% of the bedplaces offered.

Distribution of overnight stays of traveller residents by autonomous community of destination in %



Youth Hostels

Overnight stays in hostels registered an annual increase of 14.4% in October. Overnight stays by resident travellers increased by 14.8% and those of non-resident travellers did so by 13.9%.

24.3% of the offered bedplaces were occupied, 21.4% more than in October 2014. The weekend occupancy rate by bedplaces reached 33.9%, with a 28.0% increase.

By Autonomous Community, Cataluña was the preferred destination, with 79,823 overnight stays, 13.8% more than in October 2014. Cataluña also reached the highest occupancy rate with 40.7% of bedplaces offered.

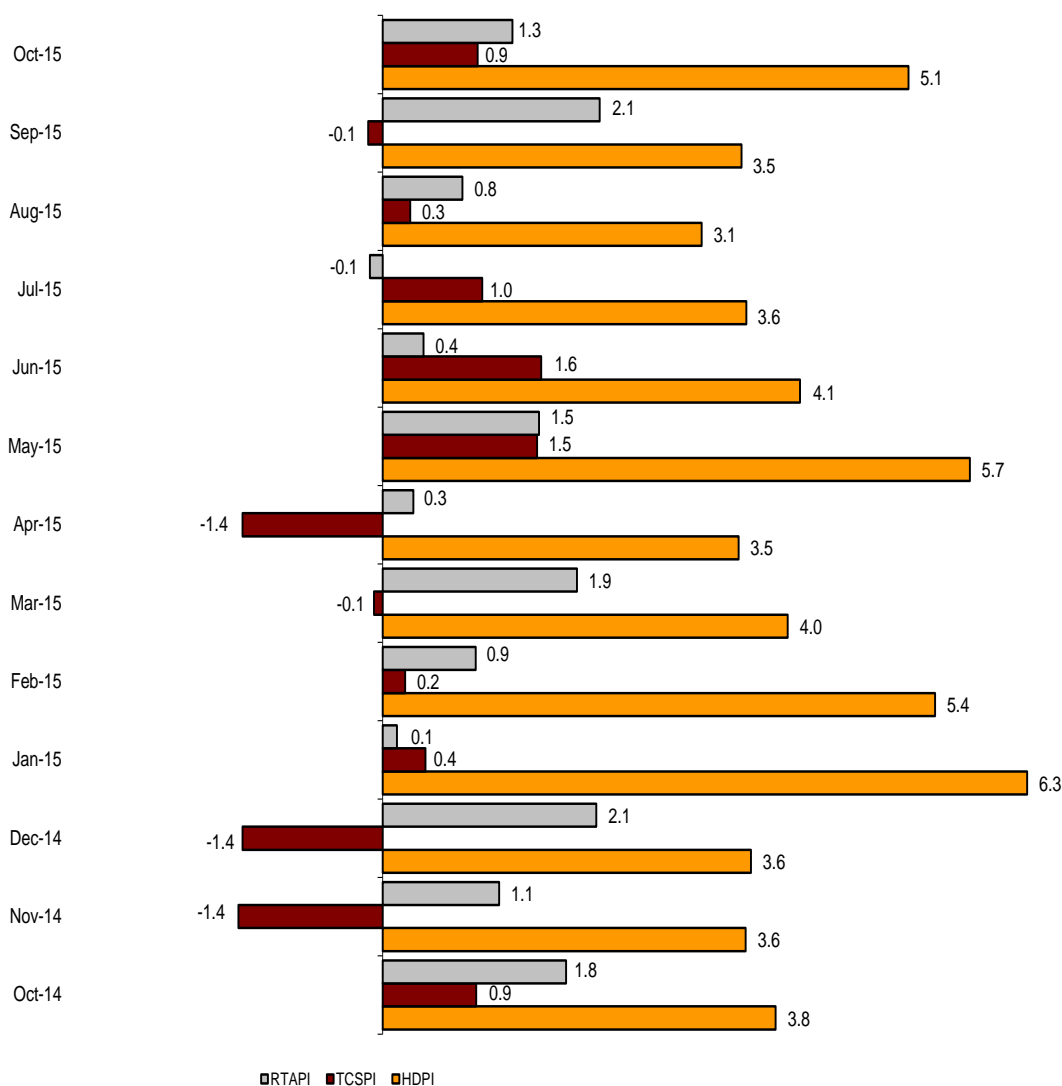
Price Indices

The Holiday Dwelling Price Index (HDPI) increased 5.1%, as compared to October 2014. The *tour operators and travel agencies* rate, which carried the greatest weight in the weighting structure for this month (53.7%), increased by 6.2%.

The Tourist Campsite Price Index (TCPI) increased by 0.9% in the annual rate. The *bungalow* rate, which had the greatest weight in the weighting structure for October (37.7%), increased by 1.4% as compared with the same month of 2014.

The Rural Tourism Accommodation Price Index (RTAPI) registered a 1.3% increase in October. The *weekend* rate, which accounted for 65.8% of the total weight, increased by 1.8% in the annual rate.

Price Indices. Annual variation rates



Evolution of travellers and overnight stays in all Spanish collective tourist accommodation

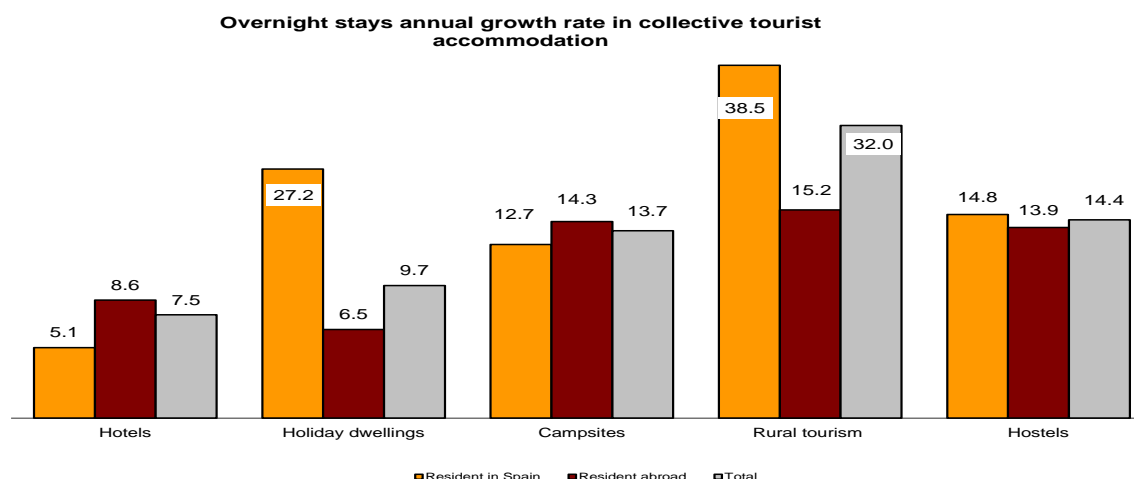
In October, overnight stays in Spanish collective tourist accommodation (hotels¹, holiday dwellings, tourist campsites, rural tourism accommodation and youth hostels) registered an 8.5% increase in the annual rate. Overnight stays by residents increased by 8.7%, while those of non-residents did so by 8.5%.

The average stay decreased 1.5%, standing at 3.5 overnight stays per traveller.

Travellers and overnight stays in collective tourist accommodation were:

October 2015	Holiday dwelling	Campsites	Rural T.	Non-hotel	Hotels	Hotels	Total
Travellers	879,779	326,232	318,805	78,749	1,603,565	8,700,285	10,303,850
Residents	273,231	216,121	266,037	51,332	806,721	4,137,612	4,944,333
Non-residents	606,548	110,111	52,767	27,417	796,843	4,562,674	5,359,517
Overnight stays	5,442,718	1,602,221	751,346	169,032	7,965,317	28,216,790	36,182,107
Residents	969,878	643,051	567,174	100,080	2,280,183	8,597,323	10,877,506
Non-residents	4,472,840	959,170	184,172	68,952	5,685,134	19,619,467	25,304,601

Of the total overnight stays in collective tourist accommodation, 78% accounted for hotels, and 22% did so for non-hotel tourist accommodation.



The main countries of origin in overall regulated tourist accommodation were the United Kingdom (with 30.1% of the total number of non-resident overnight stays), Germany (24.4%) and France (7.5%).

Canarias was the preferred destination, with 8.2 million overnight stays (2.8% more than in October 2014), followed by Illes Balears, with more than 6.2 million overnight stays (and an annual increase of 11.8%), and Cataluña, with 5.4 million (and a 8.3% increase).

¹ The press release corresponding to Hotel Tourism Short-Term Trends was published on 23 November.

Tourist Accommodation Occupancy Survey (Holiday Dwellings)

October 2015 Provisional data

1. Travellers, overnight stays and average stay by Autonomous Cities and Communities

Autonomous Cities and Communities	Travellers			Overnight stays			Average stay
	Total	Residents in Spain	Residents abroad	Total	Residents in Spain	Residents abroad	
TOTAL	879,779	273,231	606,548	5,442,718	969,878	4,472,840	6.19
Andalucía	161,260	54,462	106,798	740,492	145,814	594,677	4.59
Aragón	13,423	11,760	1,664	40,670	33,897	6,773	3.03
Asturias, Principado de	4,769	4,481	289	13,081	12,240	840	2.74
Balears, Illes	87,798	8,757	79,041	709,998	47,986	662,012	8.09
Canarias	326,456	49,376	277,080	2,599,066	222,445	2,376,621	7.96
Cantabria	7,391	6,376	1,014	21,744	16,986	4,759	2.94
Castilla y León	11,467	10,965	502	30,130	28,411	1,718	2.63
Castilla - La Mancha	10,660	10,018	643	25,667	22,800	2,868	2.41
Cataluña	75,150	34,628	40,522	353,431	143,086	210,345	4.70
Comunitat Valenciana	100,164	34,086	66,078	633,765	147,139	486,626	6.33
Extremadura	5,781	5,201	581	10,501	9,355	1,146	1.82
Galicia	5,726	4,382	1,343	14,564	12,322	2,242	2.54
Madrid, Comunidad de	43,722	20,125	23,597	156,734	66,449	90,284	3.58
Murcia, Región de	8,234	5,299	2,935	47,500	24,748	22,752	5.77
Navarra, Comunidad Foral de	7,163	5,068	2,096	17,289	13,902	3,387	2.41
País Vasco	5,279	3,369	1,910	17,183	12,311	4,873	3.26
Rioja, La	5,335	4,878	457	10,904	9,987	917	2.04
Ceuta	-	-	-	-	-	-	-
Melilla	-	-	-	-	-	-	-
Annual rate	16.75	31.32	11.20	9.65	27.22	6.46	-6.08
Cumulative annual rate	5.68	11.16	2.81	2.41	7.36	0.84	-3.10

2. Capacity, occupancy and number of staff by Autonomous Cities and Communities

Autonomous Cities and Communities	Capacity		Level of occupancy				Employed personnel
	Estimated bedplaces	Estimated Holiday dwelling	Per bedplaces	Per bedplaces at weekend	Per Holiday dwelling	Per Holiday dwelling at weekend	
TOTAL	469,285	125,593	37.21	40.14	58.01	61.36	25,788
Andalucía	68,221	16,926	34.89	39.10	55.19	59.89	3,989
Aragón	6,623	1,514	20.11	34.27	29.58	44.50	488
Asturias, Principado de	3,770	1,018	11.19	18.81	20.05	26.69	241
Balears, Illes	58,085	17,925	39.07	39.62	52.79	53.90	3,876
Canarias	154,041	47,497	54.04	54.45	76.20	77.22	10,216
Cantabria	3,181	914	22.02	34.33	30.26	43.23	212
Castilla y León	5,225	1,107	18.54	36.36	29.69	46.84	449
Castilla - La Mancha	5,139	1,220	16.07	31.94	21.58	40.69	449
Cataluña	52,009	11,864	21.91	26.74	36.35	43.17	1,586
Comunitat Valenciana	84,777	17,764	24.11	26.69	43.87	47.28	2,481
Extremadura	1,661	387	20.36	32.35	29.90	44.17	163
Galicia	3,618	953	12.94	17.42	24.93	29.76	229
Madrid, Comunidad de	8,416	3,164	59.42	65.27	82.03	85.21	567
Murcia, Región de	8,288	1,898	18.49	21.68	33.81	37.85	286
Navarra, Comunidad Foral de	2,249	485	24.74	34.10	46.98	57.14	295
País Vasco	2,599	648	21.19	28.60	44.69	53.66	128
Rioja, La	1,384	310	25.33	50.25	36.01	65.33	135
Ceuta	-	-	-	-	-	-	-
Melilla	-	-	-	-	-	-	-
Annual rate	4.38	2.96	5.00	5.01	6.29	6.14	5.04
Cumulative annual rate	1.57	0.43	0.92	1.76	2.19	2.75	5.38

3. Travellers, overnight stays, capacity, occupancy, total number of staff with greater number of overnight stays *

Provinces	Travellers		Overnight stays			Capacity		Level of occupancy			Employed personnel
	Residents in Spain	Residents abroad	Residents in Spain	Residents abroad	Average stay	Estimated bed-places	Estimated holiday dwelling	Per bed-places	Per Holiday dwelling	Per Holiday dwelling at weekend	
Palmas, Las	29,408	175,957	139,122	1,549,878	8.22	98,735	30,578	54.70	78.16	79.21	6,149
Santa Cruz de Tenerife	19,968	101,123	83,323	826,742	7.52	55,305	16,919	52.87	72.66	73.63	4,067
Málaga	15,169	74,599	43,808	497,985	6.04	40,720	10,062	42.85	67.66	69.75	2,446
Alicante\Alacant	16,363	55,167	85,186	424,687	7.13	60,375	12,897	27.24	49.57	51.82	1,880
Barcelona	7,681	20,942	66,271	89,979	5.46	9,408	2,878	53.59	73.61	78.28	488
Tarragona	18,912	13,348	55,105	80,349	4.20	19,825	3,976	22.04	36.14	47.20	481
Valencia\València	9,070	9,918	29,909	46,350	4.02	10,824	2,264	22.72	40.63	46.42	371
Sevilla	10,424	13,639	25,630	40,781	2.76	4,360	1,326	48.52	68.19	80.61	333
Granada	11,113	11,626	29,541	32,504	2.73	5,590	1,416	35.48	56.62	59.19	464
Girona	6,132	6,181	17,885	39,851	4.69	20,784	4,599	8.96	15.74	19.84	546
Castellón\Castelló	8,653	993	32,044	15,590	4.94	13,578	2,603	11.31	18.43	25.50	231
Cádiz	4,874	4,066	14,732	13,030	3.11	4,334	1,083	20.47	29.57	35.74	274
Almería	5,550	1,276	16,268	6,439	3.33	7,983	1,784	9.17	15.72	25.97	218
Huesca	5,084	683	14,897	2,587	3.03	3,539	770	16.46	21.80	36.30	241
Zaragoza	2,971	684	8,361	3,278	3.18	1,165	324	32.10	46.98	58.16	99

4. Travellers, overnight stays, capacity, occupancy, total number of staff from tourist areas with greater number of overnight stays

Tourist Areas	Travellers		Overnight stays			Capacity		Level of occupancy			Employed personnel
	Residents in Spain	Residents abroad	Residents in Spain	Residents abroad	Average stay	Estimated bed-places	Estimated holiday dwelling	Per bed-places	Per Holiday dwelling	Per Holiday dwelling at weekend	
Isla de Tenerife	14,721	96,187	62,449	784,667	7.64	49,011	14,776	55.51	76.50	76.96	3,539
Isla de Gran Canaria	18,044	77,893	80,327	686,288	7.99	47,201	15,074	52.09	73.84	75.09	2,780
Isla de Lanzarote	6,960	69,243	39,564	600,010	8.39	35,632	10,510	57.35	83.01	83.92	2,451
Isla de Mallorca	5,321	62,168	22,004	531,053	8.19	39,635	12,318	44.56	59.40	59.57	2,773
Costa del Sol	12,016	69,259	37,632	479,036	6.36	38,255	9,452	43.49	68.96	70.67	2,343
Costa Blanca	16,276	54,668	84,358	419,977	7.11	57,226	12,152	28.43	51.81	54.23	1,817
Isla de Fuerteventura	4,404	28,820	19,232	263,581	8.51	15,902	4,994	56.50	81.01	81.75	918
Costa Daurada	18,449	13,230	53,782	80,021	4.22	19,521	3,913	22.11	36.28	47.25	468
Islas de Ibiza-Formentera	2,352	12,124	21,512	87,935	7.56	12,410	3,980	28.31	38.48	41.69	756
Costa Barcelona	2,913	3,650	52,987	25,573	11.97	4,485	1,590	56.41	74.20	75.56	109

5. Travellers, overnight stays, capacity, occupancy, total number of staff from tourist sites with greater number at overnights stays

Tourist sites	Travellers		Overnight stays			Capacity		Level of occupancy			Employed personnel
	Residents in Spain	Residents abroad	Residents in Spain	Residents abroad	Average stay	Estimated bed-places	Estimated holiday dwelling	Per bed-places	Per Holiday dwelling	Per Holiday dwelling at weekend	
San Bartolomé de Tirajana	10,413	46,942	43,785	433,955	8.33	29,596	9,544	51.68	75.45	77.01	1,773
Arona	3,550	42,922	16,995	361,298	8.14	20,411	6,234	59.66	79.08	78.81	1,498
Tías	3,928	36,526	23,545	321,069	8.52	18,821	5,861	58.19	84.19	85.32	1,152
Mogán	5,970	29,273	29,833	241,552	7.70	16,683	5,133	52.30	71.92	72.38	933
Benidorm	7,947	28,312	48,114	219,842	7.39	19,368	4,716	44.63	71.76	75.68	711
Adeje	2,193	32,173	12,786	248,112	7.59	15,483	4,286	54.12	80.83	79.95	1,063
Teguise	2,631	19,807	14,806	182,146	8.78	9,981	2,956	62.91	84.41	84.73	675
Madrid	18,684	21,985	61,463	84,822	3.60	7,772	2,899	60.04	82.65	85.93	512
Pájara	994	9,734	6,281	103,090	10.19	5,268	1,792	65.02	87.65	88.03	430
Calvià	536	12,543	2,454	104,538	8.18	7,814	2,474	43.73	60.33	61.45	675

* Provinces belonging to uniprovincial Autonomous Communities have not been included because they are reflected in previous tables.

6. Travellers and overnight stays by countries of residence

Countries	Travellers		Overnight stays	
	Total	%	Total	%
TOTAL	879,779	100.00	5,442,718	100.00
Residents in Spain	273,231	31.06	969,878	17.82
Residents abroad	606,548	68.94	4,472,840	82.18
Total residents abroad	606,548	100.00	4,472,840	100.00
Total residents in E.U (excluding Spain)	512,596	84.51	3,901,725	87.23
- Germany	89,609	14.77	833,850	18.64
- Austria	2,439	0.40	19,973	0.45
- Belgium	8,153	1.34	55,896	1.25
-Denmark	15,947	2.63	107,281	2.40
- Finland	17,972	2.96	115,695	2.59
- France	35,640	5.88	180,925	4.04
- Greece	382	0.06	1,499	0.03
- Ireland	26,832	4.42	204,310	4.57
- Italy	15,734	2.59	84,675	1.89
- Luxembourg	541	0.09	2,406	0.05
- Netherlands	34,845	5.74	289,176	6.47
- Poland	6,348	1.05	43,892	0.98
- Portugal	2,814	0.46	10,829	0.24
- United Kingdom	219,081	36.12	1,704,877	38.12
- Czech Republic	2,311	0.38	17,084	0.38
- Sweden	25,811	4.26	176,939	3.96
- Other EU countries	8,138	1.34	52,416	1.17
Norway	22,898	3.78	195,346	4.37
Russia	8,468	1.40	56,432	1.26
Switzerland	9,813	1.62	70,985	1.59
Other european countries	6,200	1.02	49,578	1.11
United States of America	9,371	1.55	40,544	0.91
Rest of America	12,696	2.09	63,032	1.41
African countries	3,540	0.58	18,864	0.42
Other countries	20,966	3.46	76,334	1.71

Tourist Accommodation Occupancy Survey Campsite Occupancy Survey (COS)

October 2015

Provisional data

1. Travellers, overnight stays and average stay by category of establishment

Category	Travellers			Overnight stays			Average stay
	Total	Residents in Spain	Residents abroad	Total	Residents in Spain	Residents abroad	
TOTAL	326.232	216.121	110.111	1.602.221	643.051	959.170	4,91
Luxury and first-class	134.542	81.612	52.930	669.179	235.634	433.545	4,97
Second-class	161.986	109.305	52.681	831.706	324.090	507.616	5,13
Third-class	29.704	25.203	4.501	101.336	83.326	18.009	3,41
Annual rate	16,13	19,44	10,15	13,65	12,65	14,32	-2,14
Cumulative annual rate	6,10	5,46	7,41	6,57	5,93	7,32	0,45

2. Open establishments, capacity, occupancy and number of staff by category of establishments

Category	Estimated open establishments	Capacity		Occupied pitches	Occupancy rate per pitch	Weekend occupancy rate	Employed personnel
		Estimated bedplaces	Estimated pitches				
TOTAL	608	392.158	121.375	1.310.514	34,83	36,94	4.353
Luxury and first-class	159	159.500	48.712	511.659	33,88	35,92	1.994
Second-class	352	199.362	62.215	690.447	35,80	37,59	2.029
Third-class	98	33.295	10.449	108.408	33,47	37,46	330
Annual rate	0,47	-0,53	-0,69	5,94	6,67	1,38	7,41
Cumulative annual rate	1,16	1,00	0,83	4,60	3,72	3,07	6,36

3. Travellers, overnight stays and average stay by Autonomous Cities and Communities

Autonomous cities and communities	Travellers			Overnight stays			Average stay
	Total	Residents in Spain	Residents abroad	Total	Residents in Spain	Residents abroad	
TOTAL	326.232	216.121	110.111	1.602.221	643.051	959.170	4,91
Andalucía	49.629	27.450	22.179	223.948	99.953	123.996	4,51
Aragón	17.066	11.478	5.588	43.154	27.701	15.453	2,53
Asturias, Principado de	2.862	2.118	744	6.383	4.710	1.673	2,23
Balears, Illes*	-	-	-	-	-	-	-
Canarias*	-	-	-	-	-	-	-
Cantabria	6.418	5.837	581	21.368	20.224	1.144	3,33
Castilla y León	9.527	5.939	3.589	17.668	11.402	6.266	1,85
Castilla - La Mancha	5.959	4.899	1.060	13.387	11.396	1.992	2,25
Cataluña	120.999	92.107	28.891	498.259	263.624	234.635	4,12
Comunitat Valenciana	56.570	27.494	29.076	566.176	105.191	460.986	10,01
Extremadura	4.875	2.826	2.049	9.697	6.161	3.537	1,99
Galicia	833	377	456	1.660	707	953	1,99
Madrid, Comunidad de	15.567	12.582	2.985	45.021	37.332	7.689	2,89
Murcia, Región de	10.754	5.659	5.095	95.659	16.050	79.609	8,89
Navarra, Comunidad Foral de	8.666	7.372	1.294	18.597	15.955	2.642	2,15
País Vasco	7.712	3.375	4.337	16.115	7.493	8.622	2,09
Rioja, La	6.802	5.358	1.444	14.787	12.297	2.490	2,17
Ceuta	-	-	-	-	-	-	-
Melilla	-	-	-	-	-	-	-

* The size of the sample in these communities does not facilitate the INE the broken down results, with the objective of maintaining statistical secrecy. Nevertheless, the data corresponding to these communities are included in the national total.

4. Open establishments, capacity, occupancy and number of staff by autonomous cities and communities

Autonomous cities and communities	Estimated open establishments	Capacity		Occupied pitches	Occupancy rate per pitch	Weekend occupancy rate	Employed personnel
		Estimated bedplaces	Estimated pitches				
TOTAL	608	392.158	121.375	1.310.514	34,83	36,94	4.353
Andalucía	110	64.041	20.845	139.136	21,53	23,63	690
Aragón	62	24.029	7.400	45.536	19,85	21,65	249
Asturias, Principado de	12	6.613	2.037	8.249	13,06	23,64	49
Balears, Illes*	-	-	-	-	-	-	-
Canarias*	-	-	-	-	-	-	-
Cantabria	19	13.495	4.288	62.509	47,03	42,26	69
Castilla y León	37	15.411	4.703	32.998	22,63	24,53	107
Castilla - La Mancha	17	7.247	2.245	15.881	22,82	27,03	119
Cataluña	131	117.743	34.666	383.063	35,65	38,87	1.284
Comunitat Valenciana	100	67.133	20.865	348.758	53,92	54,58	993
Extremadura	17	5.306	1.822	13.983	24,75	25,76	81
Galicia	18	6.698	2.229	6.636	9,60	9,62	56
Madrid, Comunidad de	20	17.819	5.983	86.667	46,73	47,85	191
Murcia, Región de	17	14.566	4.817	61.201	40,98	47,35	180
Navarra, Comunidad Foral de	18	12.072	2.920	31.694	35,01	36,15	112
País Vasco	16	7.811	2.395	22.306	30,04	33,49	77
Rioja, La	8	7.933	2.409	43.461	58,20	59,01	60
Ceuta	-	-	-	-	-	-	-
Melilla	-	-	-	-	-	-	-

5. Travellers and overnight stays, average stay, capacity, occupancy and number of staff by provinces with the greatest number of overnight stays**

Provinces	Travellers		Overnight stays		Average stay	Estimated open establishments	Estimated pitches	Occupancy rate per pitch	Employed personnel
	Residents in Spain	Residents abroad	Residents in Spain	Residents abroad					
	Alicante\Alacant	8.479	16.059	44.071					
Tarragona	25.693	8.176	118.545	103.820	6,57	32	12.911	32,17	545
Barcelona	36.885	8.487	80.026	59.571	3,08	33	8.834	42,46	288
Castellón\Castelló	7.745	8.227	29.125	101.394	8,17	32	5.869	44,56	260
Girona	21.922	11.492	46.681	69.383	3,47	43	9.178	31,78	359
Málaga	4.915	5.076	17.191	61.055	7,83	27	4.372	33,87	171
Valencia\València	11.271	4.790	31.995	41.807	4,60	28	5.330	45,18	215
Huelva	7.183	1.185	41.505	7.712	5,88	11	4.786	20,65	109
Almería	2.059	3.592	12.238	19.585	5,63	16	2.426	24,87	86
Huesca	7.791	2.221	16.651	5.325	2,20	38	4.960	22,69	175
Cádiz	2.007	4.653	4.604	17.183	3,27	13	3.247	14,95	123
Granada	3.576	4.584	8.345	13.079	2,63	22	2.710	17,33	105
Lleida	7.608	736	18.372	1.861	2,42	24	3.743	41,05	93
Zaragoza	1.622	3.024	6.064	9.144	3,27	12	1.214	20,36	43
Gipúzkoa	1.717	2.627	4.131	5.812	2,29	7	1.365	26,59	36

** Provinces belonging to uniprovincial Autonomous Communities have not been included because they are reflected in previous tables.

6. Travellers, overnight stays, average stay, open establishments, capacity, occupancy and number of staff from tourist areas with the greatest number of overnight stays

Tourist areas	Travellers		Overnight stays		Average stay	Estimated open establishments	Estimated pitches	Occupancy rate per pitch	Employed personnel
	Residents in	Residents abroad	Residents in	Residents abroad					
	Spain		Spain						
Costa Blanca	6.354	13.099	30.061	284.483	16,17	31	7.400	71,93	456
Costa Daurada	23.244	6.320	110.004	93.604	6,89	23	11.516	32,46	505
Costa de Castellón	5.961	7.178	26.343	97.656	9,44	25	5.291	45,68	244
Costa Barcelona	24.730	8.379	54.004	59.350	3,42	16	6.902	40,83	212
Costa Brava	13.400	11.397	30.980	68.898	4,03	28	7.514	29,64	300
Costa Cálida	1.535	4.684	6.007	76.703	13,30	8	3.715	43,02	135
Costa del Sol	3.294	4.018	14.231	57.804	9,85	11	3.024	43,60	120
P.N. Aiguamolls de l'Empordá	1.101	6.477	2.879	52.413	7,30	6	2.296	33,39	118
Pirineus	24.490	822	51.675	1.951	2,12	46	6.185	43,36	186
Costa Valencia	4.850	3.039	15.941	36.498	6,65	12	3.325	48,17	120
Costa de la Luz (Huelva)	5.128	1.064	36.978	7.487	7,18	6	4.058	19,43	83
Costa de Almería	1.847	3.545	11.825	17.897	5,51	12	2.120	24,80	69
Pirineo Aragonés	7.568	1.955	16.293	4.927	2,23	32	4.631	21,44	165
Costa de la Luz (Cádiz)	1.268	4.086	3.296	16.102	3,62	9	2.665	13,50	110
Terres de l'Ebre	2.449	1.856	8.541	10.217	4,36	8	1.396	29,71	40

7. Travellers, overnight stays, average stay, open establishments, capacity, occupancy and number of staff from tourist sites with the greatest number at overnights stays

Tourist sites	Travellers		Overnight stays		Average stay	Estimated open establishments	Estimated pitches	Occupancy rate per pitch	Employed personnel
	Residents in	Residents abroad	Residents in	Residents abroad					
	Spain		Spain						
Benidorm	3.045	5.513	17.138	171.460	22,04	10	4.010	78,42	254
Mont-Roig Del Camp	1.958	4.582	6.143	55.978	9,50	5	3.864	19,93	167
Cartagena	388	2.722	1.857	50.414	16,81	3	2.537	34,50	83
Cambrils	719	125	37.351	5.538	31,00	3	2.122	44,90	50
Marbella	2.545	1.162	11.262	29.500	11,00	3	1.313	45,57	53
Oliva	311	2.699	1.959	31.725	11,19	6	1.411	40,74	87
Cabanes	551	1.307	3.814	27.657	16,94	3	973	48,42	47
Peñíscola/Peñíscola	943	2.755	4.129	25.835	8,10	8	1.296	43,29	81
Mazarrón	384	1.607	3.016	23.535	13,34	3	874	57,09	38
Benicasim/Benicàssim	592	1.607	1.685	22.603	11,05	3	724	61,00	37
Vélez-Málaga	194	1.186	1.446	15.372	12,19	3	544	50,99	36
Blanes	4.100	1.410	9.866	5.500	2,79	5	1.603	31,87	67

10. Travellers and overnight stays by countries of residence

Countries	Travellers		Overnight stays	
	Total	%	Total	%
TOTAL	326.232	100,00	1.602.221	100,00
Residents in Spain	216.121	66,25	643.051	40,13
Residents abroad	110.111	33,75	959.170	59,87
TOTAL residents abroad	110.111	100,00	959.170	100,00
TOTAL residents in E.U. (excluding Spain)	101.702	92,36	901.693	94,01
- Germany	26.110	23,71	219.374	22,87
- Austria	826	0,75	4.488	0,47
- Belgium	3.403	3,09	42.916	4,47
- Denmark	1.711	1,55	13.779	1,44
- Finland	882	0,80	6.754	0,70
- France	22.240	20,20	123.042	12,83
- Greece	25	0,02	27	0,00
- Ireland	998	0,91	7.628	0,80
- Italy	1.611	1,46	5.709	0,60
- Luxembourg	216	0,20	1.580	0,16
- Netherlands	15.604	14,17	160.545	16,74
- Poland	616	0,56	2.210	0,23
- Portugal	502	0,46	1.496	0,16
- United Kingdom	23.099	20,98	283.711	29,58
- Czech Republic	157	0,14	855	0,09
- Sweden	2.912	2,64	24.695	2,57
- Other EU countries	790	0,72	2.884	0,30
Norway	744	0,68	7.531	0,79
Russia	45	0,04	507	0,05
Switzerland	4.801	4,36	37.977	3,96
Other European countries	457	0,41	2.700	0,28
United States of America	208	0,19	504	0,05
Rest of America	412	0,37	1.099	0,11
African countries	59	0,05	164	0,02
Other countries	1.684	1,53	6.995	0,73

* Non-significant data

**Tourist accommodation occupancy survey
(Rural tourist accommodation)**

October 2015

Provisional data

1. Number of travellers, overnight stays and average stay by Autonomous City and Community

Autonomous Communities	Number of travellers			Number of overnight stays			Average stay
	Total	Residents In Spain	Residents abroad	Total	Residents In Spain	Residents abroad	
TOTAL	318,805	266,037	52,767	751,345	567,174	184,172	2.36
Andalucía	24,436	18,383	6,053	74,375	42,676	31,699	3.04
Aragón	14,718	13,364	1,354	34,179	31,194	2,985	2.32
Asturias, Principado de	16,283	15,735	548	40,211	37,849	2,363	2.47
Balears, Illes	22,021	2,432	19,589	85,607	5,537	80,070	3.89
Canarias	6,483	2,518	3,966	31,752	9,143	22,609	4.90
Cantabria	14,802	13,633	1,170	29,733	27,656	2,077	2.01
Castilla y León	67,070	62,596	4,474	135,857	128,369	7,488	2.03
Castilla-La Mancha	23,082	22,607	475	49,674	48,996	678	2.15
Cataluña	36,578	33,077	3,501	78,766	67,650	11,116	2.15
Comunitat Valenciana	11,803	10,905	898	30,217	26,366	3,851	2.56
Extremadura	16,597	15,964	633	33,440	32,225	1,215	2.01
Galicia	17,659	12,598	5,061	27,589	21,015	6,574	1.56
Madrid, Comunidad de	12,134	10,861	1,273	20,852	18,649	2,203	1.72
Murcia, Región de	3,449	3,233	216	7,215	6,559	656	2.09
Navarra, Comunidad Foral de	14,810	13,286	1,524	33,639	29,664	3,975	2.27
País Vasco	12,869	11,205	1,665	29,601	25,844	3,757	2.30
Rioja, La	4,010	3,641	369	8,638	7,783	854	2.15
Ceuta	-	-	-	-	-	-	-
Melilla	-	-	-	-	-	-	-
Annual rate	26.23	25.92	27.82	31.97	38.54	15.17	4.55
Cumulative annual rate	15.05	15.04	15.06	13.13	14.43	9.59	-1.67

2. Open rural establishments, bed-places, occupancy rates and employed personnel by Autonomous City and Community

Autonomous Communities	Estimated open rural establishments	Estimated bed-places	Occupancy rate			Employed personnel
			Of bed-places	Of bed-places at weekend	Of bedrooms	
TOTAL	15,691	148,195	16.29	31.17	19.83	22,971
Andalucía	1,592	13,916	17.17	28.38	22.43	2,253
Aragón	1,199	9,450	11.60	25.02	14.18	1,352
Asturias, Principado de	1,270	12,065	10.74	18.42	13.48	1,563
Balears, Illes	298	5,905	46.59	42.73	49.84	2,015
Canarias	667	4,037	25.29	26.89	38.85	892
Cantabria	342	5,959	15.96	31.69	17.62	597
Castilla y León	3,292	29,026	15.04	34.93	17.42	4,626
Castilla-La Mancha	1,477	13,029	12.27	31.32	15.27	1,839
Cataluña	2,016	16,310	15.54	36.76	18.80	2,821
Comunitat Valenciana	921	9,334	10.43	19.65	17.36	1,345
Extremadura	564	6,801	15.82	29.94	21.02	803
Galicia	533	6,717	13.21	23.32	14.12	860
Madrid, Comunidad de	245	3,760	17.81	37.39	22.65	457
Murcia, Región de	136	1,983	11.73	25.16	16.66	217
Navarra, Comunidad Foral de	646	4,744	22.67	48.55	23.96	754
País Vasco	370	4,015	23.59	41.27	26.86	430
Rioja, La	123	1,146	24.06	56.27	26.68	149
Ceuta	-	-	-	-	-	-
Melilla	-	-	-	-	-	-
Annual rate	1.39	3.06	27.83	17.01	24.36	3.27
Cumulative annual rate	0.54	0.85	12.08	14.18	10.12	1.12

3. Number of travellers, overnight stays and average stay in Provinces with the greatest number of overnight stays¹

Provinces	Number of travellers			Number of overnight stays			Average stay
	Total	Residents In Spain	Residents abroad	Total	Residents In Spain	Residents abroad	
Girona	16,491	14,358	2,132	34,079	28,599	5,479	2.07
Málaga	6,704	2,874	3,830	32,185	9,590	22,595	4.80
Cáceres	13,996	13,558	438	27,971	27,034	937	2.00
Ávila	11,168	10,933	235	26,091	24,427	1,664	2.34
Santa Cruz de Tenerife	4,561	1,738	2,823	23,741	7,124	16,617	5.21
Barcelona	9,971	9,380	591	23,371	20,237	3,134	2.34
Segovia	11,740	11,555	185	21,700	21,444	256	1.85
Soria	9,544	9,491	52	20,935	20,834	100	2.19
Huesca	7,015	5,895	1,120	16,721	14,176	2,545	2.38
Gipuzkoa	6,875	5,850	1,024	16,539	14,177	2,363	2.41
León	8,143	6,498	1,645	15,946	14,032	1,914	1.96
Burgos	7,870	6,604	1,266	15,135	13,663	1,472	1.92
Lleida	6,427	6,153	274	14,031	12,813	1,218	2.18
Salamanca	6,800	6,479	322	13,496	12,865	631	1.98
Albacete	5,364	5,327	38	12,830	12,792	38	2.39

4. Open rural establishments, bed-places, occupancy rates and employed personnel in Provinces with the highest number of overnight stays¹

Provinces	Estimated open rural establishments	Estimated bed-places	Occupancy rate			Employed personnel
			Of bed-places	Of bed-places at weekend	Of bedrooms	
Girona	693	5,753	19.05	43.76	22.68	1,122
Málaga	622	4,202	24.61	29.75	32.44	788
Cáceres	476	5,751	15.65	29.78	21.10	659
Ávila	760	5,716	14.72	30.94	18.32	1,147
Santa Cruz de Tenerife	543	3,075	24.83	25.75	38.99	710
Barcelona	515	4,495	16.71	39.90	20.81	700
Segovia	402	3,687	18.90	48.55	20.31	566
Soria	316	2,899	23.06	54.19	23.89	400
Huesca	641	4,774	11.25	23.27	13.38	711
Gipuzkoa	167	1,922	27.50	41.53	32.08	215
León	408	3,575	14.33	29.79	15.80	585
Burgos	352	3,616	13.47	33.09	16.48	497
Lleida	544	3,826	11.82	28.24	14.16	692
Salamanca	482	3,868	11.22	27.80	13.06	597
Albacete	582	3,792	10.89	26.95	13.22	647

¹ Provinces belonging to uniprovincial Autonomous Communities have not been included because they are reflected in previous tables.

5. Number of travellers, overnight stays, average stay, capacity and occupancy rates in areas with the highest number of overnight stays

Areas	Number of travellers		Number of overnight stays		Average stay	Capacity		Occupancy rate		
	Residents In Spain	Residents abroad	Residents In Spain	Residents abroad		Estimated open rural establishments	Estimated bed-places	Of bed-places	Of bed-places at weekend	Of bedrooms
Isla de Mallorca	1,637	17,769	3,221	73,595	3.96	255	4,964	49.71	44.29	53.14
Pirineo Navarro	12,023	1,438	26,264	3,768	2.23	581	4,190	22.89	49.62	24.15
Pirineus	12,843	500	26,390	1,419	2.08	807	6,143	14.54	36.04	16.74
Costa Brava	8,154	1,767	16,468	4,853	2.15	416	3,587	19.15	42.18	23.19
Extremadura Norte	9,893	333	19,922	664	2.01	331	4,096	16.18	28.23	22.40
Pirineo Aragónés	5,628	913	13,321	2,025	2.35	576	4,349	11.33	24.38	13.03
Costa Verde	4,653	209	11,566	406	2.46	404	4,417	8.72	14.89	12.09
Isla de Tenerife	1,136	1,817	2,258	9,251	3.90	127	1,260	29.28	31.50	40.39
Isla de La Palma	463	740	3,868	5,918	8.13	305	1,259	25.07	24.67	44.59
P.Nacional Picos de Europa	3,659	182	8,802	911	2.53	230	2,199	14.22	26.53	15.81
P.Nacional Teide	978	1,392	1,888	6,888	3.70	84	910	30.92	33.42	43.22
Pirineo Vasco	2,762	283	6,845	843	2.52	119	1,259	19.50	35.59	21.52
P.Natural Sierras de Tejeda, Almajara y Alhama	0	1,383	0	7,560	5.47	114	807	30.21	26.75	39.31
P.Natural Sierra de Aracena y Picos de Aroche	2,867	469	5,676	1,278	2.08	122	846	26.47	49.14	36.64
Costa Barcelona	2,276	482	4,473	2,018	2.35	126	1,053	19.85	38.75	27.65

6. Number of travellers, overnight stays, average stay, capacity, occupancy rates and employed personnel per rural house by Autonomous City and Community²

Autonomous Communities	Number of travellers		Number of overnight stays		Average stay	Capacity		Occupancy rate		Employed personnel
	Residents In Spain	Residents abroad	Residents In Spain	Residents abroad		Estimated open rural establish.	Estimated bed-places	Of bed-places	Of bed-places at weekends	
TOTAL	179,705	25,954	402,684	93,923	2.41	13,272	107,001	14.91	30.89	17,088
Andalucía	18,383	6,053	42,676	31,699	3.04	1,592	13,916	17.17	28.38	2,253
Aragón	10,367	1,126	23,396	2,278	2.23	921	7,199	11.43	25.04	1,038
Asturias, Principado de	5,188	190	13,481	729	2.64	803	5,049	9.07	15.60	904
Balears, Illes	757	5,100	1,527	14,586	2.75	69	1,032	50.04	43.61	213
Canarias	1,296	2,037	6,823	14,597	6.43	638	3,206	21.52	23.04	749
Cantabria	3,044	142	6,513	586	2.23	142	2,129	10.73	20.43	194
Castilla y León	36,606	443	84,229	2,327	2.34	2,866	20,037	13.89	34.24	3,544
Castilla-La Mancha	21,859	469	47,585	672	2.16	1,449	12,447	12.48	31.85	1,800
Cataluña	33,077	3,501	67,650	11,116	2.15	2,016	16,310	15.54	36.76	2,821
Comunitat Valenciana	7,476	851	21,106	3,635	2.97	880	7,216	11.05	19.62	1,211
Extremadura	6,427	317	13,366	456	2.05	328	3,238	13.72	31.16	380
Galicia	8,020	2,995	13,812	3,954	1.61	393	4,690	12.20	22.44	570
Madrid, Comunidad de	2,219	65	4,576	115	2.05	71	790	19.06	39.93	101
Murcia, Región de	2,196	57	4,974	384	2.38	123	1,644	10.50	25.00	169
Navarra, Comunidad Foral de	13,286	1,524	29,664	3,975	2.27	646	4,744	22.67	48.55	754
País Vasco	5,865	714	13,522	1,959	2.35	210	2,208	22.39	41.47	240
Rioja, La	3,641	369	7,783	854	2.15	123	1,146	24.06	56.27	149
Ceuta	-	-	-	-	-	-	-	-	-	-
Melilla	-	-	-	-	-	-	-	-	-	-

² To facilitate the comparability between data from different Autonomous Communities (and because of the different regulation and different characteristics), a group called rural house has been created, with those establishments with similar typology (location, capacity, etc...).

The variables included in the previous table have been estimated with that type of establishments.

7. Travellers and overnight stays by country of residence

Results by countries	Travellers		Overnight stays	
	Total	%	Total	%
TOTAL	318,805	100.00	751,345	100.00
Residents Spain	266,037	83.45	567,174	75.49
Residents abroad	52,767	16.55	184,172	24.51
Total Residents abroad	52,767	100.00	184,172	100.00
Total Residents in EU (excluding Spain)	40,808	77.34	157,878	85.72
- Germany	16,368	31.02	73,874	40.11
- Belgium	1,194	2.26	4,328	2.35
- France	6,026	11.42	15,338	8.33
- Italy	1,321	2.50	3,351	1.82
- Netherlands	3,773	7.15	16,655	9.04
- Portugal	446	0.84	1,019	0.55
- United Kingdom	8,562	16.23	32,086	17.42
Switzerland	2,071	3.93	8,164	4.43
Other European countries	4,823	9.14	15,049	8.17
United States of America	3,410	6.46	5,962	3.24
Other countries	4,774	9.05	8,345	4.53

Tourist Accommodation Occupancy Survey Hostels Occupancy Survey (HOS)

October 2015 Provisional data

1. Travellers, overnight stays and average stay by Autonomous Cities and Communities

Autonomous cities and communities	Travellers			Overnight stays			Average stay
	Total	Residents in Spain	Residents abroad	Total	Residents in Spain	Residents abroad	
TOTAL	78,749	51,332	27,417	169,032	100,080	68,952	2.15
Andalucía	8,999	6,926	2,073	16,281	12,311	3,970	1.81
Aragón	1,329	1,188	141	3,310	3,007	303	2.49
Asturias, Principado de	279	235	44	510	459	51	1.83
Balears, Illes	-	-	-	-	-	-	-
Canarias	-	-	-	-	-	-	-
Cantabria	1,042	1,002	40	2,110	2,070	40	2.02
Castilla y León	3,863	3,415	448	8,577	6,035	2,542	2.22
Castilla - La Mancha	3,841	3,722	119	7,290	7,089	201	1.90
Cataluña	35,111	18,254	16,858	79,823	37,261	42,561	2.27
Comunitat Valenciana	6,539	3,248	3,291	15,620	7,046	8,574	2.39
Extremadura	990	901	89	1,887	1,730	157	1.91
Galicia	444	393	51	683	618	65	1.54
Madrid, Comunidad de	3,048	1,994	1,054	5,938	3,680	2,258	1.95
Murcia, Región de	-	-	-	-	-	-	-
Navarra, Comunidad Foral de	2,027	1,381	646	4,749	3,362	1,387	2.34
País Vasco	9,979	7,583	2,397	19,315	12,922	6,393	1.94
Rioja, La	574	574	0	987	987	0	1.72
Ceuta	-	-	-	-	-	-	-
Melilla	-	-	-	-	-	-	-
Annual rate	10.50	11.95	7.88	14.44	14.83	13.88	3.57
Cumulative annual rate	0.84	-0.22	3.04	0.80	-2.43	8.28	-0.04

2. Open establishments, capacity, occupancy and number of staff by autonomous cities and communities

Autonomous cities and communities	Capacity		Occupancy rate		Employed personnel
	Estimated open establishments	Estimated bed-places	Of bed-places	Of bed-places at weekend	
TOTAL	197	22,408	24.33	33.87	1,507
Andalucía	12	2,753	19.07	31.55	167
Aragón	16	1,414	7.55	11.37	71
Asturias, Principado de	3	286	5.75	9.34	36
Balears, Illes	-	-	-	-	-
Canarias	-	-	-	-	-
Cantabria	8	451	15.09	29.07	25
Castilla y León	24	2,173	12.73	26.15	136
Castilla - La Mancha	24	2,389	9.85	15.35	101
Cataluña	40	6,322	40.73	53.27	383
Comunitat Valenciana	11	1,351	37.30	51.15	108
Extremadura	10	825	7.38	17.76	48
Galicia	3	255	8.66	17.68	18
Madrid, Comunidad de	7	590	32.47	44.58	164
Murcia, Región de	-	-	-	-	-
Navarra, Comunidad Foral de	11	792	19.34	17.67	51
País Vasco	20	2,359	26.41	28.19	153
Rioja, La	5	239	13.31	35.84	12
Ceuta	-	-	-	-	-
Melilla	-	-	-	-	-
Annual rate	-2.41	-5.75	21.43	27.96	-4.16
Cumulative annual rate	0.54	0.36	0.44	-1.54	-0.03

3. Travellers and overnight stays by countries of residence

Countries	Travellers		Overnight stays		Average stay
	Total	%	Total	%	
TOTAL	78,749	100.00	169,032	100.00	2.15
Residents in Spain	51,332	65.18	100,080	59.21	1.95
Residents abroad	27,417	34.82	68,952	40.79	2.51
TOTAL residents abroad	27,417	100.00	68,952	100.00	2.51
TOTAL residents in E.U. (excluding Spain)	18,549	67.66	47,545	68.95	2.56
- Germany	3,156	11.51	8,625	12.51	2.73
- Belgium	693	2.53	1,690	2.45	2.44
- France	5,525	20.15	12,703	18.42	2.30
- Italy	2,055	7.49	5,064	7.34	2.46
- Netherlands	1,185	4.32	3,764	5.46	3.18
- Portugal	475	1.73	1,051	1.52	2.21
- United Kingdom	2,417	8.81	5,974	8.66	2.47
Switzerland	478	1.74	1,168	1.69	2.44
Other European countries	4,450	16.23	12,409	18.00	2.79
United States of America	1,451	5.29	3,205	4.65	2.21
Other countries	5,531	20.17	13,299	19.29	2.40

HOLIDAY DWELLING PRICE INDEX (HDPI)

October 2015

Provisional data

National general index and breakdown by rates

	Index	Annual variation rate
TOTAL	116.75	5.14
Normal	113.79	3.78
Weekend	124.68	5.38
Tour-operators and travel agencies	119.65	6.15

National general index and breakdown by modalities

	Index	Annual variation rate
TOTAL	116.75	5.14
Studio	114.60	6.84
Dwellings 2/4 bedplaces	114.58	4.92
Dwellings 4/6 bedplaces	130.37	4.55

Tourist Campsite Price Index (TCSPI). 2002 Base

October 2015

Provisional data

National general index and breakdown by rates

	Index	Annual variation rate
TOTAL	131.26	0.93
Normal rate	129.27	1.67
Special rate for stays up to one month	142.40	1.57
Special rate for stays longer than one month	127.29	0.55
Tarifa bungalow*	101.37	1.37

National general index and breakdown by categories

	Index	Annual variation rate
TOTAL	131.26	0.93
Luxury and first	129.16	1.73
Second	134.61	0.12
Third	98.20	2.57

*2014 Base

TCSPI (ANNEX OF TABLES) - OCTOBER 2015

27th november 2015

**Rural Tourism Accommodation Price Index (RTAPI)
October 2015**

Provisional data

**General Autonomous Cities and Communities
and national indices**

	Index	Annual variation rate
TOTAL	130.26	1.27
Andalucía	130.36	2.44
Aragón	152.07	3.53
Asturias, Principado de	114.67	-0.86
Balears, Illes	114.40	-0.31
Canarias	106.58	-1.22
Cantabria	172.78	7.00
Castilla y León	134.15	3.67
Castilla - La Mancha	120.70	6.91
Cataluña	124.75	-5.18
Comunitat Valenciana	124.22	1.66
Extremadura	111.64	3.03
Galicia	126.90	2.33
Madrid, Comunidad de	140.48	-0.32
Murcia, Región de	135.16	-7.80
Navarra, Comunidad Foral de	180.78	9.59
País Vasco	146.16	1.36
Rioja, La	127.62	-7.66
Ceuta	-	-
Melilla	-	-

National general index and breakdown by rates

	Index	Annual variation rate
TOTAL	130.26	1.27
Normal	130.11	0.28
Weekend	131.64	1.77

National general index and breakdown by rent modality

	Index	Annual variation rate
TOTAL	130.26	1.27
Shared use (in case of per room rent modality)	116.99	1.25
Full use (rent of entire dwelling)	139.03	1.28