

30 November 2017

Non-hotel Tourist Accommodation Occupancy Survey
October 2017. *Provisional data*

**Overnight stays in non-hotel tourist accommodation increase 4.3%
in October compared to the same month of 2016**

Overnight stays in non-hotel tourist accommodation (holiday dwellings, tourist campsites, rural tourism accommodation and youth hostels) exceeded 9.1 million in October, 4.3% more than in the same month of 2016. Overnight stays by residents increased by 7.2% and those of non-residents did so by 3.2%.

The average stay stood at 4.9 overnight stays per traveller.

During the first 10 months of 2017, overnight stays increased 6.1%, as compared with the same period of the previous year.

Travellers and overnight stays in collective non-hotel tourist accommodations during the month of October were:

October 2017	Travellers	Overnight stays
Residents in Spain	882,093	2,599,665
EU (not including Spain)	828,543	5,771,757
Rest of the world	162,009	807,900
TOTAL	1,872,645	9,179,322

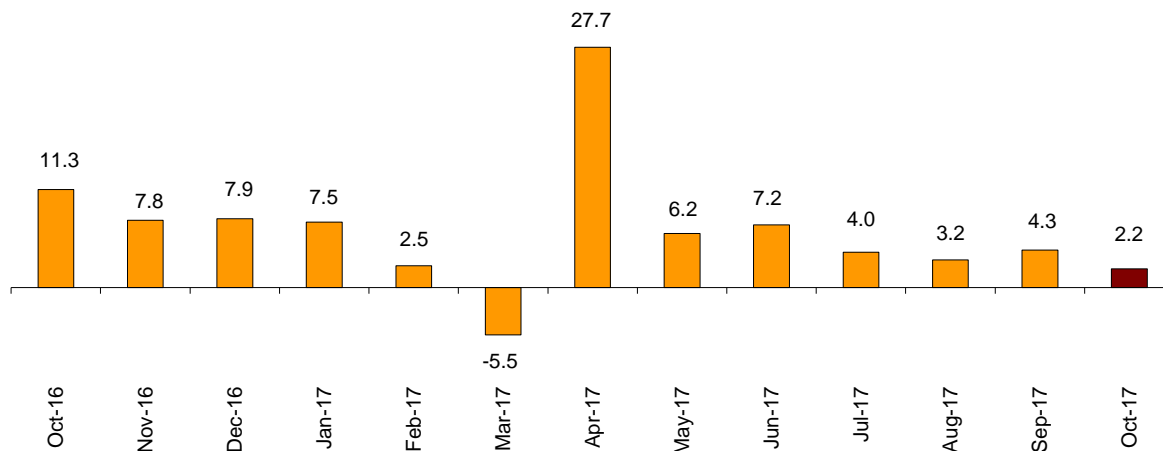
Holiday dwellings

Overnight stays in holiday dwellings increased 2.2% in October. Resident overnight stays grew by 3.5%, and those of non-residents did so by 1.9%.

The average stay decreased 3.1% as compared with October 2016, standing at 6.0 overnight stays per traveller.

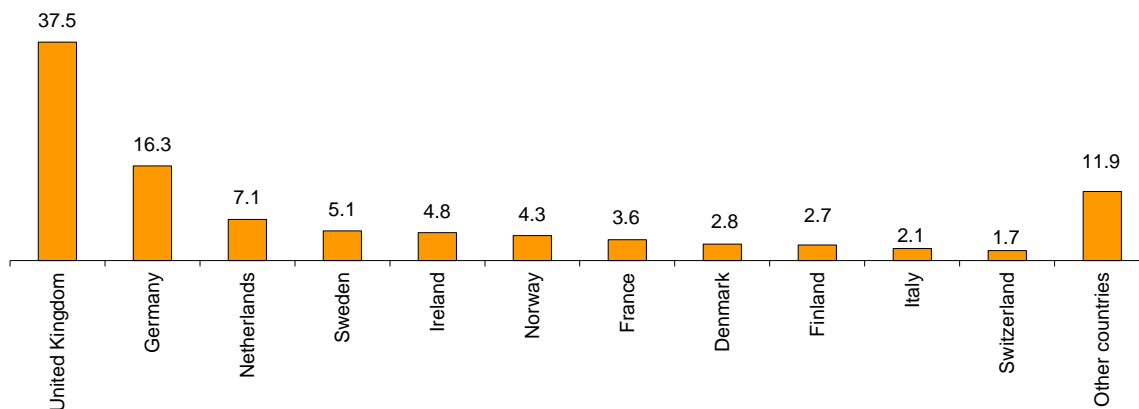
In October, 36.9% of the beds available for holiday dwellings were occupied, 5.4% less than in the same month of 2016. The weekend occupancy rate by bedplaces stood at 40.7%, with a decrease of 1.5%.

Overnight stays annual growth rate in holiday dwellings in %



Non-resident overnight stays in holiday dwellings represented 82.6% of the total. The United Kingdom was the main country of origin, with 1.9 million overnight stays, 2.9% more than in October 2016. The following country of origin was Germany, with 838,109 overnight stays, 12.0% less.

Distribution of overnight stays of residents abroad of the 11 main countries by origin



Canarias was the preferred holiday dwelling destination, with 2.7 million overnight stays, a decrease of 2.7% as compared with October 2016. This Autonomous Community also presented the highest occupancy rate, with 79.8% of holiday dwellings offered.

By tourist areas, the island of Gran Canaria was the preferred destination, with 914,462 overnight stays. The island of Lanzarote registered the highest occupancy rate, with 85.7% of holiday dwellings offered.

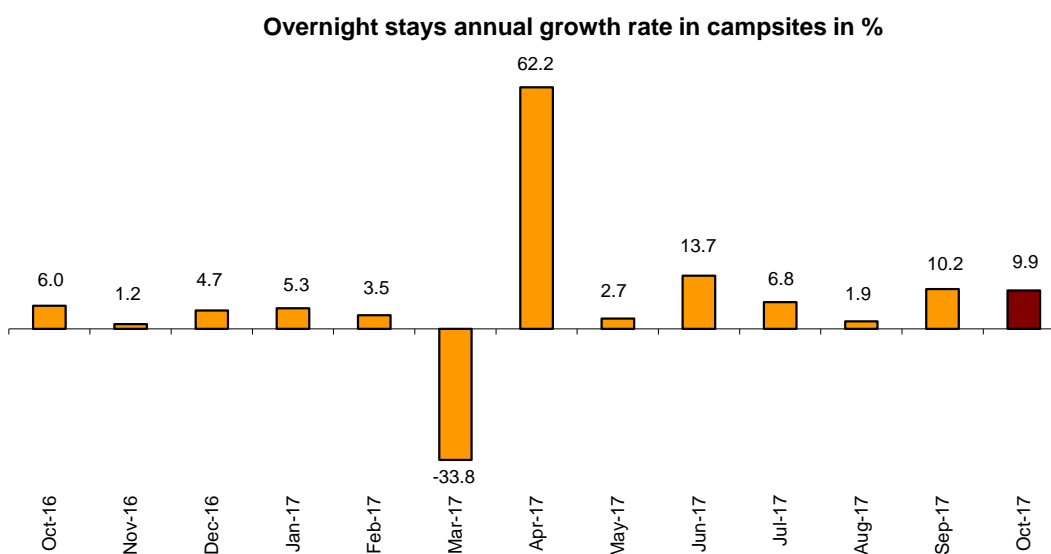
The tourist sites with the greatest number of overnight stays in October were San Bartolomé de Tirajana, Arona and Tías.

Tourist campsites

Overnight stays at tourist campsites registered an increase of 9.9% in October as compared with the same month of the previous year. Resident overnight stays grew by 16.7% and non-residents did so by 5.4%.

In October, 36.2% of the offered pitches were occupied, that is, 2.7% more than in the same month of 2016. The weekend occupancy rate by pitch reached 39.3%, with an annual increase of 2.7%.

57.9% of overnight stays on tourist campsites were by non-residents travellers. The United Kingdom was the main country of origin, with 29.2% of the overnight stays by non-residents, 6.3% more than in October 2016.



Comunitat Valenciana was the preferred destination for tourist campsites, with 685,729 overnight stays, representing an annual increase of 13.2%. La Rioja reached the highest occupancy rate, with 62.2% of the pitches offered.

By tourist area, the Costa Brava was the preferred destination, with 357,169 overnight stays. It also reached the highest occupancy rate, with 76.1% of pitches offered.

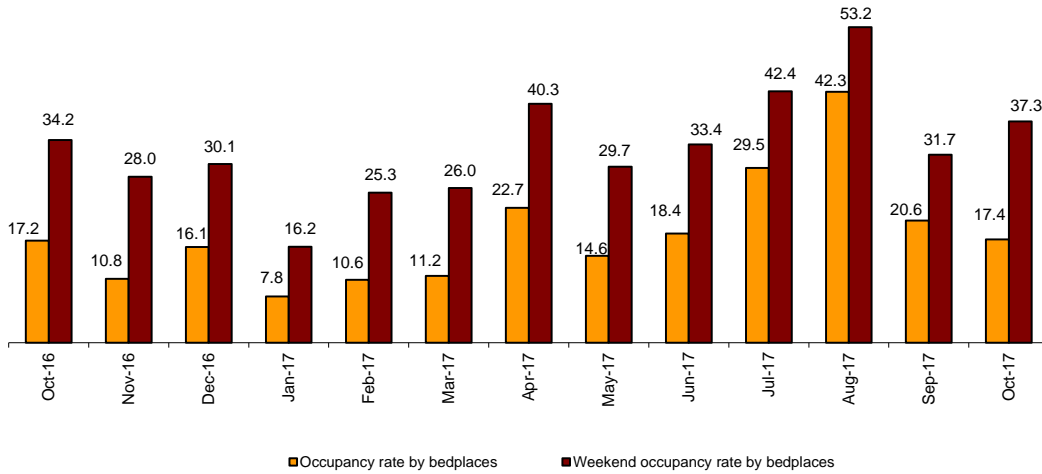
The tourist sites with the highest number of overnight stays were Benidorm, Mont-Roig Del Camp and Cartagena.

Rural tourism accommodation

Overnight stays in rural tourism accommodations presented an annual increase of 5.6% in October. Overnight stays by residents dropped 0.8%, whilst those by non-residents grew 22.7%.

In rural tourism accommodations, 17.4% of the bedplaces were occupied, a 1.3% increase as compared with October 2016. The weekend occupancy rate stood at 37.3%, with an annual increase of 9.1%.

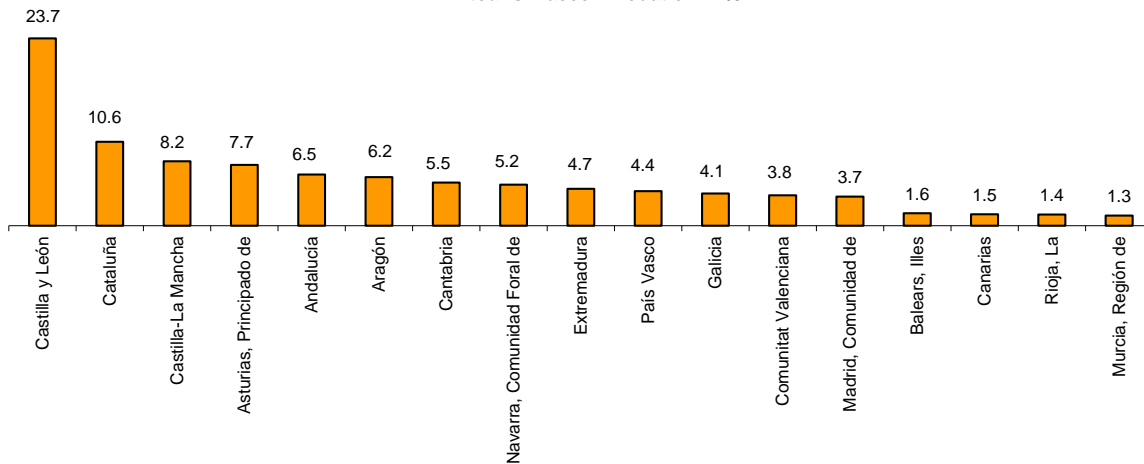
Occupancy rate by bedplaces and bedplaces on weekends in rural tourism accommodation



By Autonomous Community, Castilla y León was the preferred destination, with 151,930 overnight stays, 0.9% more than in October 2016. Illes Balears reached the highest occupancy rate, with 44.2% of the bedplaces offered.

By tourist areas, the island of Mallorca was the preferred destination, with 94,356 overnight stays. This Community also had the highest occupancy rate, with 44.4% of the beds offered.

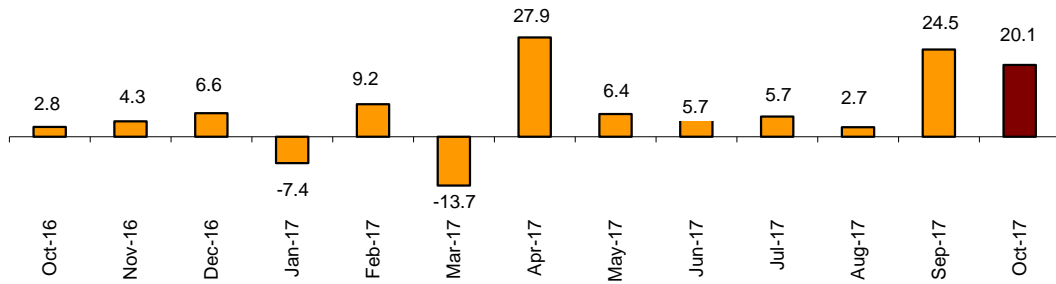
Distribution of overnight stays of traveller residents by autonomous community of destination in rural tourism accommodation in %



Youth Hostels

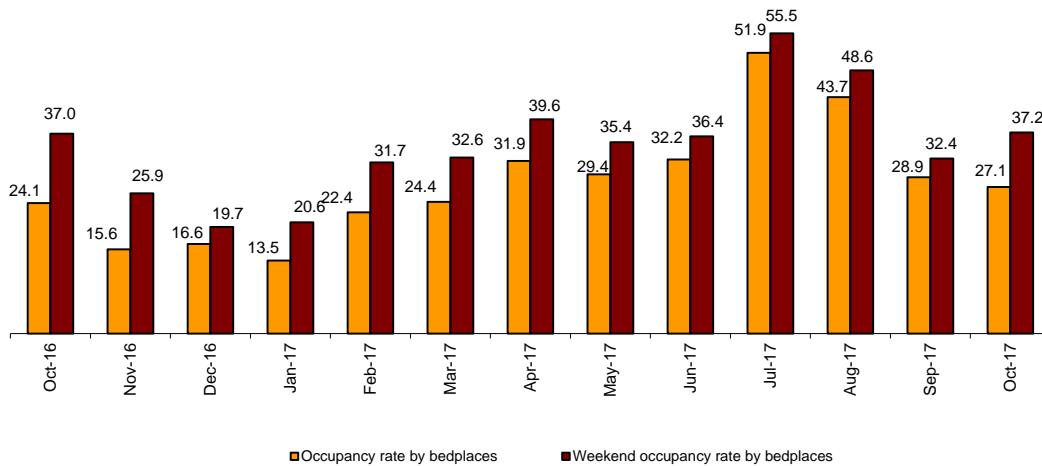
Overnight stays in hostels registered an annual increase of 20.1% in October. Resident overnight stays grew by 29.6%, and those of non-residents did so by 7.1%.

Overnight stays annual growth rate in hostel in %



27.1% of the available beds were occupied, 12.2% more than in October 2016. The weekend occupancy rate reached 37.2%, with a 0.6% increase.

Occupancy rate by bedplaces and bedplaces on weekends in hostel



By Autonomous Community, Cataluña was the preferred destination, with 84,335 overnight stays, 0.4% more than in October 2016. The Autonomous Community of Canarias had the highest occupancy rate, with 45.1% of the bedplaces offered.

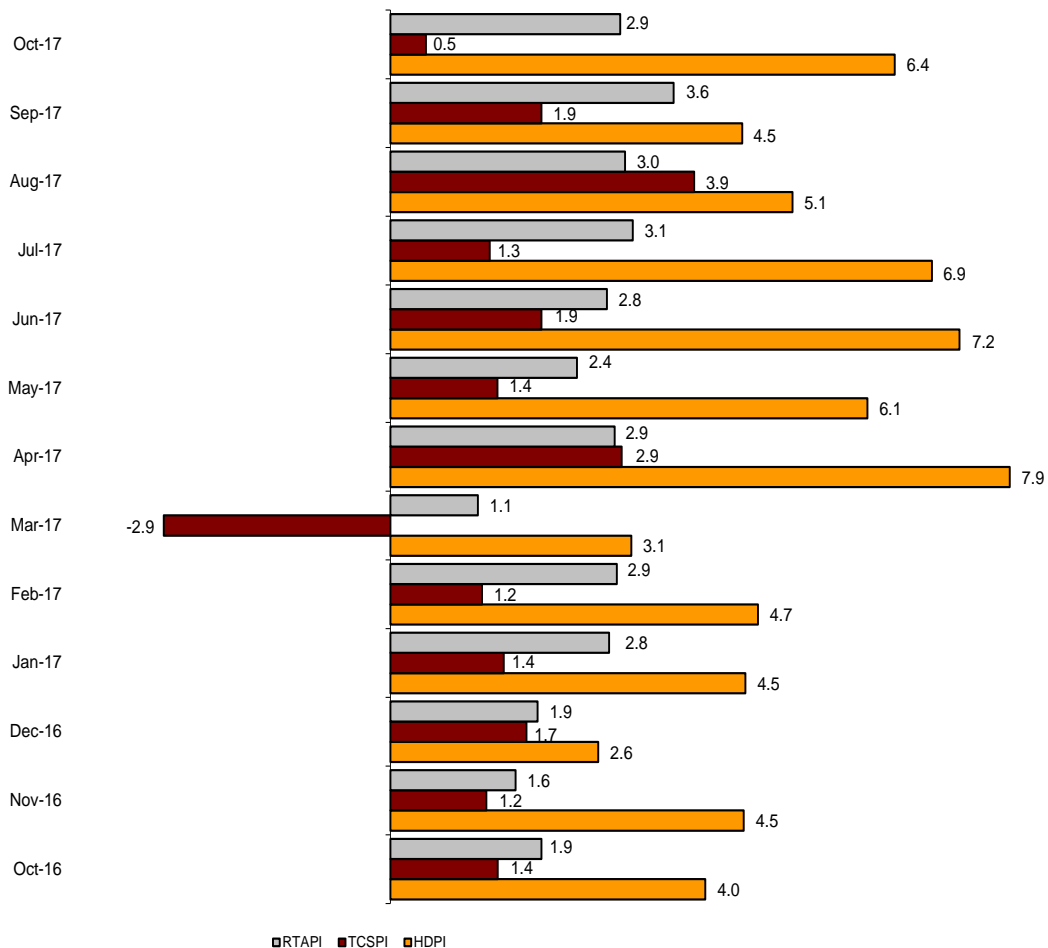
Price indices

The Holiday Dwelling Price Index (HDPI) increased 6.4%, as compared with October 2016. The rate for *tour operators and travel agencies*, which carried the greatest weight in the weighting structure for this month (51.8%), increased by 7.6%.

The Tourist Campsite Price Index (TCPI) increased by 0.5% in the annual rate. The *bungalow* rate, which carried the greatest weight in the weightings structure in October (41.1%), decreased by 1.0% when compared with the same month of 2016.

The Rural Tourism Accommodation Price Index (RTAPI) registered a 2.9% increase in October. The *weekend rate*, which accounted for 62.2% of the total weight, increased by 3.1% in the annual rate.

Price Indices. Annual variation rates



Evolution of travellers and overnight stays in all Spanish collective tourist accommodation

In October, overnight stays in Spanish collective tourist accommodation (hotels¹, holiday dwellings, tourist campsites, rural tourism accommodation and youth hostels) registered a 1.9% increase in the annual rate. Overnight stays by residents dropped 0.3%, whilst those by non-residents grew 2.8%.

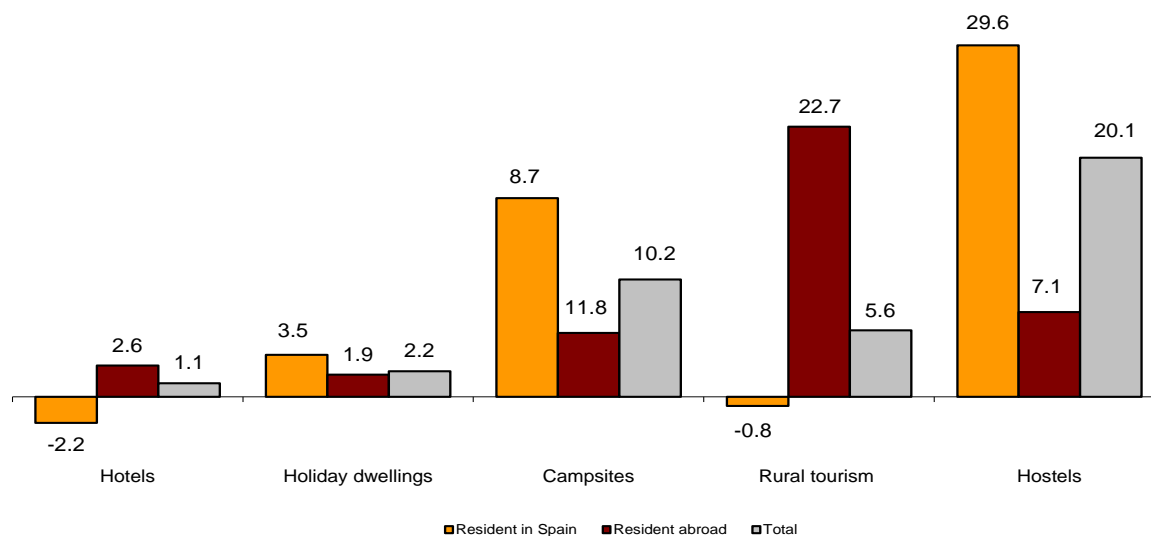
The average stay decreased 0.8%, and stood at 3.5 overnight stays per traveller.

Travellers and overnight stays in collective tourist accommodation were:

October 2017	Holiday dwelling	Campsites	Rural T.	Non-hotel	Hotels	Hotels	Total
Travellers	1,042,180	391,305	350,719	88,443	1,872,647	9,461,838	11,334,485
Residents	300,596	249,244	274,333	57,920	882,093	4,296,732	5,178,825
Non-residents	741,583	142,061	76,385	30,523	990,552	5,165,106	6,155,658
Overnight stays	6,227,831	1,876,478	866,588	208,426	9,179,323	30,936,781	40,116,104
Residents	1,084,634	790,497	594,356	130,178	2,599,665	9,235,163	11,834,828
Non-residents	5,143,197	1,085,980	272,232	78,248	6,579,657	21,701,619	28,281,276

77% of the total overnight stays in collective tourist accommodation corresponded to hotels and 23% to non-hotel tourist accommodation.

Overnight stays annual growth rate in collective tourist accommodation



The main countries of origin in overall regulated tourist accommodation were The United Kingdom (with 27.4% of the total number of non-resident overnight stays), Germany (24.7%) and France (6.9%).

Canarias was the preferred destination, with over 9.0 million overnight stays (0.4% more than in October 2016). It was followed by Illes Balears, with 7.2 million overnight stays (an increase of 4.0%) and Andalucía, with more than 6.1 million, (an annual increase of 2.9%).

¹ The press release corresponding to Hotel Tourism Short-Term Trends was published on 23 November.

Tourist Accommodation Occupancy Survey (Holiday Dwellings)

October 2017

Provisional data

1. Travellers, overnight stays and average stay by Autonomous Cities and Communities

Autonomous Cities and Communities	Travellers			Overnight stays			Average stay
	Total	Residents in Spain	Residents abroad	Total	Residents in Spain	Residents abroad	
TOTAL	1,042,180	300,596	741,583	6,227,831	1,084,634	5,143,197	5.98
Andalucía	202,357	66,892	135,464	851,372	178,667	672,705	4.21
Aragón	16,191	14,635	1,556	46,085	38,567	7,518	2.85
Asturias, Principado de	7,656	6,803	853	22,643	20,158	2,484	2.96
Balears, Illes	137,967	15,795	122,172	942,498	74,967	867,531	6.83
Canarias	348,252	42,947	305,305	2,720,552	204,747	2,515,805	7.81
Cantabria	9,223	8,444	779	29,387	25,471	3,916	3.19
Castilla y León	13,751	12,274	1,477	33,447	28,001	5,447	2.43
Castilla - La Mancha	11,171	10,378	793	33,573	30,135	3,438	3.01
Cataluña	77,426	31,796	45,630	385,400	142,839	242,562	4.98
Comunitat Valenciana	120,274	36,710	83,564	830,151	170,282	659,869	6.90
Extremadura	5,797	4,902	895	11,710	9,961	1,749	2.02
Galicia	11,662	8,404	3,257	29,054	21,820	7,234	2.49
Madrid, Comunidad de	45,397	18,878	26,519	159,436	65,963	93,473	3.51
Murcia, Región de	8,275	4,813	3,462	53,721	24,913	28,808	6.49
Navarra, Comunidad Foral de	8,433	5,881	2,552	19,975	14,445	5,530	2.37
País Vasco	12,824	6,401	6,423	46,574	22,942	23,631	3.63
Rioja, La	5,524	4,643	880	12,252	10,755	1,497	2.22
Ceuta	-	-	-	-	-	-	-
Melilla	-	-	-	-	-	-	-
Annual rate	5.44	5.25	5.51	2.15	3.53	1.87	-3.12
Cumulative annual rate	9.21	10.02	8.75	5.23	7.01	4.63	-3.64

2. Capacity, occupancy and number of staff by Autonomous Cities and Communities

Autonomous Cities and Communities	Capacity		Level of occupancy				Employed personnel
	Estimated bedplaces	Estimated Holiday dwelling	Per bedplaces	Per bedplaces at weekend	Per Holiday dwelling	Per Holiday dwelling at weekend	
TOTAL	539,921	141,276	36.94	40.72	57.77	61.85	29,364
Andalucía	74,299	18,717	36.83	42.78	57.52	64.62	4,491
Aragón	6,907	1,552	21.45	41.92	30.18	53.41	491
Asturias, Principado de	4,693	1,158	15.47	25.82	23.87	37.52	328
Balears, Illes	61,296	19,271	48.85	48.26	62.19	61.33	4,565
Canarias	155,355	47,289	55.93	57.53	79.82	81.40	11,455
Cantabria	3,838	1,051	24.63	39.20	35.83	53.58	280
Castilla y León	5,771	1,267	18.67	35.82	29.56	46.96	517
Castilla - La Mancha	5,772	1,369	18.73	35.22	29.70	48.39	416
Cataluña	51,415	11,470	24.09	30.15	40.26	47.74	1,641
Comunitat Valenciana	137,060	28,921	19.48	21.98	33.88	37.28	3,053
Extremadura	1,963	469	19.22	33.72	30.17	48.34	177
Galicia	4,447	1,165	20.91	31.40	35.88	48.46	355
Madrid, Comunidad de	9,474	3,554	54.05	60.28	69.96	75.03	628
Murcia, Región de	9,207	2,103	18.81	22.14	37.25	42.75	287
Navarra, Comunidad Foral de	2,497	534	25.75	37.48	47.14	58.46	327
País Vasco	4,376	1,043	34.26	48.17	52.66	65.95	232
Rioja, La	1,550	343	25.38	49.63	37.19	67.73	120
Ceuta	-	-	-	-	-	-	-
Melilla	-	-	-	-	-	-	-
Annual rate	7.85	7.37	-5.38	-1.46	-5.52	-2.50	4.30
Cumulative annual rate	8.97	7.38	-3.36	-3.16	-2.60	-2.59	8.04

3. Travellers, overnight stays, capacity, occupancy, total number of staff with greater number of overnight stays *

Provinces	Travellers		Overnight stays			Capacity		Level of occupancy			Employed personnel
	Residents in Spain	Residents abroad	Residents in Spain	Residents abroad	Average stay	Estimated bed-places	Estimated holiday dwelling	Per bed-places	Per Holiday dwelling	Per Holiday dwelling at weekend	
Palmas, Las	24,835	204,029	120,107	1,694,240	7.93	103,213	31,325	56.12	81.87	83.68	7,316
St Cruz de Tenerife	18,112	101,276	84,641	821,565	7.59	52,142	15,964	55.56	75.80	76.92	4,139
Alicante\Alacant	18,960	68,486	104,514	575,973	7.78	102,897	22,297	21.28	35.56	38.07	2,310
Málaga	22,905	92,460	64,350	541,328	5.25	47,105	11,633	41.38	66.56	70.47	2,908
Barcelona	8,740	22,275	75,381	102,011	5.72	11,025	3,136	52.26	73.28	78.18	684
Tarragona	13,177	15,820	40,192	98,338	4.78	17,821	3,534	25.06	43.01	55.52	478
Sevilla	16,303	24,340	35,669	58,191	2.31	5,720	1,719	52.32	73.34	83.44	446
Valencia\València	8,189	12,931	29,201	62,892	4.36	15,644	3,167	18.98	36.26	41.74	425
Girona	8,410	7,509	23,133	41,934	4.09	20,295	4,344	10.34	17.63	22.43	403
Castellón\Castelló	9,561	2,147	36,567	21,003	4.92	18,519	3,456	10.03	20.96	28.10	317
Granada	7,879	7,002	20,159	23,540	2.94	4,664	1,306	30.12	39.18	55.66	390
Cádiz	5,099	5,998	16,089	22,046	3.44	4,600	1,158	26.62	39.75	51.24	329
Almería	4,360	2,345	17,318	19,992	5.56	6,158	1,440	19.54	31.60	38.27	156
Gipúzkoa	3,507	4,737	11,724	18,184	3.63	2,846	616	33.82	43.96	59.84	144
Teruel	6,095	265	15,065	1,514	2.61	2,060	461	25.80	35.23	64.55	145

4. Travellers, overnight stays, capacity, occupancy, total number of staff from tourist areas with greater number of overnight stays

Tourist Areas	Travellers		Overnight stays			Capacity		Level of occupancy			Employed personnel
	Residents in Spain	Residents abroad	Residents in Spain	Residents abroad	Average stay	Estimated bed-places	Estimated holiday dwelling	Per bed-places	Per Holiday dwelling	Per Holiday dwelling at weekend	
Isla de Gran Canaria	12,186	102,267	58,482	855,980	7.99	54,140	16,397	54.18	79.18	81.95	3,540
Isla de Tenerife	12,917	95,553	62,718	772,300	7.70	46,139	13,904	57.83	78.97	79.68	3,608
Costa Blanca	18,353	63,626	103,097	558,963	8.08	100,643	21,874	21.21	35.47	37.94	2,163
Isla de Mallorca	6,634	82,999	37,788	616,367	7.30	36,172	11,569	56.85	69.45	68.66	3,007
Isla de Lanzarote	6,231	74,990	34,156	605,737	7.88	33,736	10,128	60.12	85.69	86.18	2,634
Costa del Sol	18,676	86,333	55,194	516,775	5.45	42,868	10,747	42.94	68.52	71.96	2,777
Isla de Fuerteventura	6,418	26,772	27,468	232,523	7.83	15,338	4,800	54.20	82.96	84.31	1,141
Islas de Ibiza-Formentera	8,084	29,408	31,500	168,725	5.34	16,865	5,339	38.62	51.48	51.33	1,203
Costa Daurada	12,340	15,606	37,323	97,895	4.84	17,147	3,406	25.42	43.52	56.03	459
Costa Barcelona	3,811	4,210	62,331	38,216	12.54	5,003	1,678	64.80	80.39	82.84	180

5. Travellers, overnight stays, capacity, occupancy, total number of staff from tourist sites with greater number at overnights stays

Tourist sites	Travellers		Overnight stays			Capacity		Level of occupancy			Employed personnel
	Residents in Spain	Residents abroad	Residents in Spain	Residents abroad	Average stay	Estimated bed-places	Estimated holiday dwelling	Per bed-places	Per Holiday dwelling	Per Holiday dwelling at weekend	
San Bartolomé de Tirajana	7,644	61,791	40,071	537,312	8.32	34,624	10,520	53.34	79.05	81.90	2,152
Arona	4,132	42,658	22,329	334,975	7.64	19,180	5,799	59.78	78.83	78.63	1,595
Tías	2,546	37,999	11,505	319,104	8.15	17,075	5,378	61.14	85.89	85.65	1,128
Mogán	2,227	37,226	11,349	298,688	7.86	18,270	5,321	54.68	78.91	80.85	1,233
Benidorm	5,261	36,776	33,177	244,710	6.61	20,406	4,906	43.93	71.73	76.07	677
Adeje	949	28,518	6,832	244,652	8.53	13,626	3,891	58.80	83.71	82.73	890
Teguise	2,307	23,129	12,458	176,478	7.43	9,713	2,933	61.97	86.14	86.56	754
Alcúdia	2,135	20,024	24,665	134,966	7.20	9,466	2,808	54.32	58.56	55.95	907
Madrid	18,037	26,322	61,013	92,451	3.46	8,947	3,324	55.07	70.37	75.35	595
Calvià	1,614	17,162	10,059	132,906	7.61	7,736	2,674	58.47	79.57	80.34	747

* Provinces belonging to uniprovincial Autonomous Communities have not been included because they are reflected in previous tables.

6. Travellers and overnight stays by countries of residence

Countries	Travellers		Overnight stays	
	Total	%	Total	%
TOTAL	1,042,180	100.00	6,227,831	100.00
Residents in Spain	300,596	28.84	1,084,634	17.42
Residents abroad	741,583	71.16	5,143,197	82.58
Total residents abroad	741,583	100.00	5,143,197	100.00
Total residents in E.U (excluding Spain)	622,377	83.93	4,483,371	87.17
- Germany	97,398	13.13	838,109	16.30
- Austria	4,091	0.55	23,423	0.46
- Belgium	9,022	1.22	77,282	1.50
-Denmark	22,916	3.09	145,653	2.83
- Finland	19,518	2.63	138,924	2.70
- France	39,875	5.38	184,355	3.58
- Greece	735	0.10	3,786	0.07
- Ireland	35,072	4.73	248,177	4.83
- Italy	23,727	3.20	107,418	2.09
- Luxembourg	577	0.08	3,288	0.06
- Netherlands	49,256	6.64	363,443	7.07
- Poland	8,536	1.15	55,404	1.08
- Portugal	4,503	0.61	18,203	0.35
- United Kingdom	256,029	34.52	1,930,193	37.53
- Czech Republic	3,336	0.45	21,749	0.42
- Sweden	36,644	4.94	263,903	5.13
- Other EU countries	11,142	1.50	60,060	1.17
Norway	27,878	3.76	221,032	4.30
Russia	9,173	1.24	63,905	1.24
Switzerland	12,566	1.69	89,798	1.75
Other european countries	8,767	1.18	52,139	1.01
United States of America	12,970	1.75	48,010	0.93
Rest of America	17,553	2.37	79,282	1.54
African countries	3,318	0.45	15,212	0.30
Other countries	26,981	3.64	90,447	1.76

Tourist Accommodation Occupancy Survey Campsite Occupancy Survey (COS)

October 2017

Provisional data

1. Travellers, overnight stays and average stay by category of establishment

Category	Travellers			Overnight stays			Average stay
	Total	Residents in Spain	Residents abroad	Total	Residents in Spain	Residents abroad	
TOTAL	391,305	249,244	142,061	1,876,478	790,497	1,085,980	4.80
Luxury and first-class	152,664	90,739	61,925	781,259	321,959	459,300	5.12
Second-class	198,423	124,912	73,511	992,945	394,244	598,701	5.00
Third-class	40,217	33,593	6,625	102,273	74,294	27,979	2.54
Annual rate	11.68	12.73	9.88	9.87	16.72	5.37	-1.62
Cumulative annual rate	6.88	7.38	5.92	6.55	6.99	6.05	-0.31

2. Open establishments, capacity, occupancy and number of staff by category of establishments

Category	Estimated open establishments	Capacity		Occupied pitches	Occupancy rate per pitch	Weekend occupancy rate	Employed personnel
		Estimated bedplaces	Estimated pitches				
TOTAL	636	403,790	125,686	1,410,763	36.21	39.32	4,675
Luxury and first-class	166	164,436	49,610	532,960	34.65	38.15	1,955
Second-class	368	204,490	64,948	757,643	37.63	40.66	2,336
Third-class	102	34,864	11,128	120,160	34.83	37.17	383
Annual rate	1.94	0.59	0.72	3.41	2.67	2.65	5.59
Cumulative annual rate	-1.08	-1.53	-1.30	2.47	4.07	3.42	3.36

3. Travellers, overnight stays and average stay by Autonomous Cities and Communities

Autonomous cities and communities	Travellers			Overnight stays			Average stay
	Total	Residents in Spain	Residents abroad	Total	Residents in Spain	Residents abroad	
TOTAL	391,305	249,244	142,061	1,876,478	790,497	1,085,980	4.80
Andalucía	51,464	26,019	25,445	229,085	101,499	127,586	4.45
Aragón	19,647	12,796	6,851	50,662	30,702	19,960	2.58
Asturias, Principado de	3,965	2,379	1,586	13,082	9,328	3,754	3.30
Balears, Illes	1,739	116	1,623	11,887	644	11,243	6.84
Canarias	1,682	1,568	114	6,215	3,735	2,480	3.70
Cantabria	6,711	6,087	625	15,315	14,176	1,139	2.28
Castilla y León	13,044	6,303	6,741	28,277	16,989	11,288	2.17
Castilla - La Mancha	6,419	5,237	1,182	13,927	11,299	2,628	2.17
Cataluña	145,424	109,193	36,231	555,064	325,907	229,157	3.82
Comunitat Valenciana	70,050	33,184	36,866	685,729	142,251	543,478	9.79
Extremadura	6,130	3,300	2,830	13,318	8,418	4,900	2.17
Galicia	2,199	747	1,452	4,394	1,734	2,660	2.00
Madrid, Comunidad de	19,335	15,546	3,789	68,683	54,204	14,479	3.55
Murcia, Región de	11,547	6,056	5,491	110,293	19,052	91,241	9.55
Navarra, Comunidad Foral de	10,971	8,546	2,425	24,548	20,225	4,322	2.24
País Vasco	13,921	6,060	7,861	28,998	15,016	13,982	2.08
Rioja, La	7,057	6,107	950	17,000	15,317	1,683	2.41
Ceuta	-	-	-	-	-	-	-
Melilla	-	-	-	-	-	-	-

4. Open establishments, capacity, occupancy and number of staff by autonomous cities and communities

Autonomous cities and communities	Estimated open establishments	Capacity		Occupied pitches	Occupancy rate per pitch	Weekend occupancy rate	Employed personnel
		Estimated bedplaces	Estimated pitches				
TOTAL	636	403,790	125,686	1,410,763	36.21	39.32	4,675
Andalucía	108	59,498	19,284	139,985	23.42	27.43	723
Aragón	65	24,665	7,549	47,318	20.22	23.44	260
Asturias, Principado de	11	6,836	2,065	14,453	22.58	29.25	45
Balears, Illes	3	1,137	439	5,971	43.83	44.94	53
Canarias	3	3,152	1,356	6,517	15.51	19.32	16
Cantabria	18	13,123	4,422	53,723	39.19	38.98	92
Castilla y León	37	15,141	4,749	37,074	25.18	24.94	103
Castilla - La Mancha	20	8,163	2,590	17,427	21.70	30.12	84
Cataluña	144	127,839	37,838	421,032	35.89	39.97	1,398
Comunitat Valenciana	111	70,823	22,292	395,896	57.29	60.24	1,071
Extremadura	14	4,409	1,566	14,342	29.54	32.06	69
Galicia	20	6,647	2,220	7,498	10.90	12.77	61
Madrid, Comunidad de	21	17,920	6,049	89,335	47.64	45.95	220
Murcia, Región de	16	14,519	4,784	63,433	42.77	47.69	188
Navarra, Comunidad Foral de	20	13,023	3,373	23,517	22.49	28.41	120
País Vasco	17	8,954	2,692	26,660	31.95	34.89	105
Rioja, La	8	7,941	2,418	46,583	62.16	57.74	69
Ceuta	-	-	-	-	-	-	-
Melilla	-	-	-	-	-	-	-

5. Travellers and overnight stays, average stay, capacity, occupancy and number of staff by provinces with the greatest number of overnight stays**

Provinces	Travellers		Overnight stays		Average stay	Estimated open establishments	Estimated pitches	Occupancy rate per pitch	Employed personnel
	Residents in Spain	Residents abroad	Residents in Spain	Residents abroad					
	Alicante\Alacant	11,116	18,616	57,483					
Tarragona	40,824	13,718	133,551	103,376	4.34	36	14,506	34.05	480
Castellón\Castelló	7,657	10,965	37,192	125,011	8.71	36	6,179	49.41	253
Barcelona	33,236	11,360	104,756	49,066	3.45	34	9,011	43.67	392
Girona	25,585	10,501	61,583	74,562	3.77	45	10,062	31.67	429
Valencia\València	14,412	7,285	47,576	58,335	4.88	29	5,728	43.98	235
Málaga	5,757	7,281	22,177	69,399	7.02	29	4,745	37.28	209
Huelva	5,096	1,837	36,079	4,462	5.85	9	2,596	24.00	78
Cádiz	3,401	5,706	11,601	19,875	3.46	14	3,776	15.81	145
Lleida	9,548	653	26,017	2,154	2.76	29	4,260	35.70	96
Huesca	8,656	2,925	19,210	6,869	2.25	40	5,229	21.62	178
Almería	2,512	3,314	10,318	13,798	4.14	15	2,483	20.41	96
Granada	2,327	3,725	6,363	13,891	3.35	18	2,402	22.25	81
Gipúzkoa	3,622	4,512	8,873	9,272	2.23	9	1,688	26.74	53
Zaragoza	1,741	3,424	5,960	11,596	3.40	13	1,304	22.96	55

** Provinces belonging to uniprovincial Autonomous Communities have not been included because they are reflected in previous tables.

6. Travellers, overnight stays, average stay, open establishments, capacity, occupancy and number of staff from tourist areas with the greatest number of overnight stays

Tourist areas	Travellers		Overnight stays		Average stay	Estimated open establishments	Estimated pitches	Occupancy rate per pitch	Employed personnel
	Residents in Spain	Residents abroad	Residents in Spain	Residents abroad					
	Costa Blanca	7,201	16,731	27,823					
Costa Daurada	36,924	8,965	125,824	89,738	4.70	27	12,805	33.20	424
Costa de Castellón	5,513	10,392	28,419	122,588	9.49	28	5,461	52.17	233
Costa Barcelona	21,239	11,165	79,777	48,567	3.96	16	6,562	42.63	262
Costa Brava	16,186	10,468	41,841	74,266	4.36	29	8,369	29.80	359
Costa Cálida	2,278	4,488	9,058	87,009	14.20	8	3,731	46.55	146
Costa del Sol	4,123	5,385	18,668	65,087	8.81	13	3,456	43.95	161
Costa Valencia	8,219	3,928	23,701	52,626	6.28	13	3,753	50.04	149
pn Aiguamolls de l'Empordá	1,189	7,436	5,686	57,976	7.38	7	2,577	36.28	141
Pirineus	25,768	458	59,383	1,646	2.33	51	6,953	40.60	246
Costa de la Luz (Huelva)	4,074	1,321	34,367	3,083	6.94	6	2,385	23.56	67
Costa de la Luz (Cádiz)	2,553	5,000	10,087	18,212	3.75	11	3,209	15.95	126
Pirineo Aragonés	8,464	2,709	18,827	6,472	2.26	35	4,926	20.24	168
Costa de Almería	2,115	3,136	9,697	13,417	4.40	12	2,153	18.58	86
Terres de l'Ebre	3,900	4,753	7,726	13,638	2.47	9	1,701	40.49	56

7. Travellers, overnight stays, average stay, open establishments, capacity, occupancy and number of staff from tourist sites with the greatest number at overnights stays

Tourist sites	Travellers		Overnight stays		Average stay	Estimated open establishments	Estimated pitches	Occupancy rate per pitch	Employed personnel
	Residents in Spain	Residents abroad	Residents in Spain	Residents abroad					
	Benidorm	1,858	6,318	11,947					
Mont-Roig Del Camp	3,013	3,964	18,100	47,624	9.42	5	3,700	25.55	105
Cartagena	621	2,485	3,205	56,782	19.31	3	2,545	37.54	90
Oliva	1,725	3,888	7,399	38,752	8.22	6	1,430	53.29	109
Marbella	2,254	2,055	13,185	29,794	9.97	3	1,313	48.40	69
Cabanes	221	2,403	1,142	35,661	14.03	3	963	59.72	60
Cambrils	10,866	1,675	25,261	7,428	2.61	5	2,880	43.11	59
Peníscola/Peñíscola	834	3,137	4,211	27,108	7.89	7	1,114	53.53	33
Mazarrón	585	1,634	3,324	26,996	13.66	3	882	64.20	41
Benicasim/Benicàssim	904	1,838	3,548	23,175	9.75	4	869	58.11	45
Calp	276	1,628	872	22,380	12.21	5	463	79.26	22
Vélez-Málaga	1,213	1,391	3,104	17,604	7.95	4	862	49.79	56

8. Travellers and overnight stays by countries of residence

Countries	Travellers		Overnight stays	
	Total	%	Total	%
TOTAL	391,305	100.00	1,876,478	100.00
Residents in Spain	249,244	63.70	790,497	42.13
Residents abroad	142,061	36.30	1,085,980	57.87
TOTAL residents abroad	142,061	100.00	1,085,980	100.00
TOTAL residents in E.U. (excluding Spain)	130,339	91.75	1,019,899	93.92
- Germany	33,017	23.24	265,392	24.44
- Austria	1,221	0.86	5,873	0.54
- Belgium	4,884	3.44	47,471	4.37
- Denmark	1,441	1.01	13,650	1.26
- Finland	1,136	0.80	8,687	0.80
- France	31,084	21.88	134,612	12.40
- Greece	33	0.02	60	0.01
- Ireland	1,403	0.99	9,755	0.90
- Italy	2,088	1.47	6,937	0.64
- Luxembourg	190	0.13	1,564	0.14
- Netherlands	18,464	13.00	166,977	15.38
- Poland	929	0.65	6,688	0.62
- Portugal	1,174	0.83	2,816	0.26
- United Kingdom	28,803	20.28	316,533	29.15
- Czech Republic	388	0.27	1,309	0.12
- Sweden	3,127	2.20	28,442	2.62
- Other EU countries	957	0.67	3,131	0.29
Norway	724	0.51	10,194	0.94
Russia	223	0.16	1,200	0.11
Switzerland	6,024	4.24	40,571	3.74
Other European countries	1,083	0.76	3,816	0.35
United States of America	418	0.29	1,152	0.11
Rest of America	1,027	0.72	2,402	0.22
African countries	71	0.05	473	0.04
Other countries	2,152	1.51	6,273	0.58

**Tourist accommodation occupancy survey
(Rural tourist accommodation)**

October 2017

Provisional data

1. Number of travellers, overnight stays and average stay by Autonomous City and Community

Autonomous Communities	Number of travellers			Number of overnight stays			Average stay
	Total	Residents In Spain	Residents abroad	Total	Residents In Spain	Residents abroad	
TOTAL	350,719	274,333	76,385	866,588	594,356	272,232	2.47
Andalucía	32,596	17,788	14,809	113,493	38,532	74,961	3.48
Aragón	16,866	15,217	1,649	41,257	36,674	4,584	2.45
Asturias, Principado de	20,165	18,227	1,938	51,581	45,849	5,731	2.56
Balears, Illes	28,357	3,948	24,409	107,084	9,387	97,697	3.78
Canarias	7,961	2,905	5,056	37,866	8,720	29,145	4.76
Cantabria	17,086	15,811	1,276	34,703	32,448	2,255	2.03
Castilla y León	74,755	67,717	7,038	151,930	140,903	11,026	2.03
Castilla-La Mancha	24,112	23,119	992	51,887	48,522	3,365	2.15
Cataluña	32,987	28,672	4,315	75,251	63,111	12,140	2.28
Comunitat Valenciana	13,783	11,694	2,089	31,213	22,864	8,350	2.26
Extremadura	14,410	13,503	907	30,285	27,919	2,366	2.10
Galicia	18,880	13,181	5,700	33,278	24,243	9,036	1.76
Madrid, Comunidad de	12,185	10,967	1,218	23,480	21,877	1,604	1.93
Murcia, Región de	4,252	3,815	436	8,668	7,759	909	2.04
Navarra, Comunidad Foral de	14,712	12,948	1,764	33,989	30,983	3,006	2.31
País Vasco	13,624	10,976	2,648	31,961	26,155	5,806	2.35
Rioja, La	3,988	3,845	143	8,662	8,412	250	2.17
Ceuta	-	-	-	-	-	-	-
Melilla	-	-	-	-	-	-	-
Annual rate	3.17	-1.89	26.60	5.59	-0.76	22.72	2.35
Cumulative annual rate	10.60	8.48	19.15	10.11	7.68	16.56	-0.44

2. Open rural establishments, bed-places, occupancy rates and employed personnel by Autonomous City and Community

Autonomous Communities	Estimated open rural establishments	Estimated bed-places	Occupancy rate			Employed personnel
			Of bed-places	Of bed-places at weekend	Of bedrooms	
TOTAL	16,647	159,958	17.41	37.28	21.43	24,451
Andalucía	2,154	17,802	20.51	33.62	27.49	3,102
Aragón	1,221	9,718	13.64	33.68	15.87	1,365
Asturias, Principado de	1,344	13,082	12.70	24.91	15.02	1,746
Balears, Illes	376	7,782	44.16	48.27	51.48	2,394
Canarias	549	3,454	35.16	39.10	49.63	778
Cantabria	362	6,046	18.42	43.56	21.85	607
Castilla y León	3,515	31,342	15.60	41.69	18.57	4,755
Castilla-La Mancha	1,581	13,686	12.19	35.27	14.74	2,063
Cataluña	2,007	17,511	13.82	38.79	16.89	2,473
Comunitat Valenciana	934	10,472	9.58	22.30	14.18	1,209
Extremadura	576	6,898	14.13	36.80	18.42	873
Galicia	506	6,506	16.45	31.03	18.43	880
Madrid, Comunidad de	234	3,537	21.34	52.10	29.68	505
Murcia, Región de	150	2,249	12.42	32.74	16.25	267
Navarra, Comunidad Foral de	644	4,617	23.53	53.91	27.35	831
País Vasco	368	4,063	25.19	50.06	29.16	464
Rioja, La	127	1,192	23.20	58.25	23.52	138
Ceuta	-	-	-	-	-	-
Melilla	-	-	-	-	-	-
Annual rate	2.13	4.23	1.33	9.12	1.13	3.57
Cumulative annual rate	3.66	4.21	6.08	5.49	5.49	3.79

3. Number of travellers, overnight stays and average stay in Provinces with the greatest number of overnight stays¹

Provinces	Number of travellers			Number of overnight stays			Average stay
	Total	Residents In Spain	Residents abroad	Total	Residents In Spain	Residents abroad	
Málaga	12,996	3,831	9,165	67,068	8,791	58,277	5.16
Girona	12,883	11,498	1,385	30,094	25,309	4,785	2.34
Santa Cruz de Tenerife	5,732	2,113	3,619	29,324	6,893	22,431	5.12
Ávila	12,259	11,941	318	26,243	25,745	497	2.14
Barcelona	11,007	9,172	1,835	25,348	21,040	4,309	2.30
Cáceres	11,341	10,755	586	24,151	22,545	1,606	2.13
Segovia	11,694	11,180	514	23,649	22,751	898	2.02
Huesca	8,653	7,648	1,005	22,968	19,918	3,050	2.65
Burgos	10,358	9,341	1,017	21,382	19,641	1,742	2.06
León	11,924	8,462	3,462	19,948	15,894	4,054	1.67
Soria	8,624	8,533	91	19,564	19,396	168	2.27
Gipuzkoa	6,267	5,017	1,250	16,075	12,792	3,283	2.57
Cuenca	5,846	5,200	646	14,167	11,331	2,836	2.42
Valencia/València	5,322	4,048	1,274	12,649	7,796	4,854	2.38
Salamanca	6,067	5,727	340	12,191	11,695	496	2.01

4. Open rural establishments, bed-places, occupancy rates and employed personnel in Provinces with the highest number of overnight stays¹

Provinces	Estimated open rural establishments	Estimated bed-places	Occupancy rate			Employed personnel
			Of bed-places	Of bed-places at weekend	Of bedrooms	
Málaga	1,137	7,705	28.04	35.12	38.83	1,551
Girona	712	6,825	14.21	39.62	17.00	746
Santa Cruz de Tenerife	448	2,679	35.19	38.86	50.17	608
Ávila	743	6,219	13.59	37.67	17.84	987
Barcelona	505	4,440	18.30	53.11	22.64	788
Cáceres	466	5,599	13.89	37.40	18.59	698
Segovia	441	3,928	19.35	56.14	21.22	612
Huesca	663	5,020	14.70	33.42	17.19	745
Burgos	404	3,988	17.26	48.37	20.85	496
León	478	3,951	16.26	34.12	19.45	682
Soria	362	3,297	19.04	53.18	21.25	407
Gipuzkoa	164	1,888	27.28	49.36	33.71	221
Cuenca	308	3,082	14.73	37.68	17.97	353
Valencia/València	256	3,792	10.73	23.94	17.85	317
Salamanca	480	3,977	9.87	28.13	10.73	634

¹ Provinces belonging to uniprovincial Autonomous Communities have not been included because they are reflected in previous tables.

5. Number of travellers, overnight stays, average stay, capacity and occupancy rates in areas with the highest number of overnight stays

Areas	Number of travellers		Number of overnight stays		Average stay	Capacity		Occupancy rate		
	Residents In Spain	Residents abroad	Residents In Spain	Residents abroad		Estimated open rural establishments	Estimated bed-places	Of bed-places	Of bed-places at weekend	Of bedrooms
Isla de Mallorca	3,219	21,417	7,542	86,814	3.83	329	6,813	44.42	47.73	52.19
Pirineo Navarro	11,654	1,658	28,222	2,531	2.31	564	3,920	25.11	55.60	30.01
Pirineus	12,493	370	28,253	1,057	2.28	776	6,423	14.67	45.49	16.84
P.Natural Sierras de Tejada, Almirajara y Alhama	642	5,201	1,011	25,597	4.55	368	2,179	39.39	40.71	57.62
Pirineo Aragonés	6,863	959	18,084	3,053	2.70	626	4,684	14.50	32.70	17.05
Extremadura Norte	7,890	339	16,955	862	2.17	323	3,856	14.87	39.54	20.06
Costa del Sol	314	1,669	827	16,519	8.75	189	1,295	43.21	44.20	61.41
P.Nacional Picos de Europa	6,958	703	15,786	1,516	2.26	287	2,810	19.77	35.56	20.05
Costa Brava	5,936	1,157	12,887	3,996	2.38	438	4,312	12.62	33.68	15.43
Costa Verde	5,955	424	15,447	1,279	2.62	470	5,095	10.58	21.65	12.45
Isla de Tenerife	1,336	2,342	2,439	12,448	4.05	114	1,222	39.13	43.66	46.74
P.Natural de Corona Forestal	1,185	1,938	2,078	10,315	3.97	87	961	41.36	44.89	47.40
P.Nacional Teide	994	1,821	1,819	8,955	3.83	79	891	38.80	40.58	45.00
Parque Nacional Sierra de Guadarrama	4,999	121	9,672	235	1.94	102	1,455	21.85	57.35	29.75
Isla de La Palma	341	717	2,543	6,656	8.69	230	898	32.97	35.92	57.09

6. Number of travellers, overnight stays, average stay, capacity, occupancy rates and employed personnel per rural house by Autonomous City and Community²

Autonomous Communities	Number of travellers		Number of overnight stays		Average stay	Capacity		Occupancy rate		Employed personnel
	Residents In Spain	Residents abroad	Residents In Spain	Residents abroad		Estimated open rural establish.	Estimated bed-places	Of bed-places	Of bed-places at weekends	
TOTAL	187,529	42,957	422,022	161,584	2.53	14,248	117,496	15.96	36.74	18,315
Andalucía	17,692	14,745	38,299	74,661	3.48	2,152	17,748	20.48	33.57	3,086
Aragón	12,195	1,479	28,993	4,161	2.42	977	7,712	13.81	33.90	1,092
Asturias, Principado de	6,846	391	17,818	1,050	2.61	823	5,051	12.04	26.10	979
Balears, Illes	1,824	7,962	3,561	23,730	2.79	111	1,785	48.91	56.43	541
Canarias	1,151	2,352	5,553	17,545	6.59	520	2,626	28.25	32.16	620
Cantabria	4,494	122	10,649	407	2.39	176	2,510	14.17	35.04	237
Castilla y León	40,774	1,678	93,232	3,692	2.28	3,105	22,699	13.74	39.95	3,563
Castilla-La Mancha	22,256	984	46,739	3,353	2.16	1,553	13,069	12.32	35.64	2,008
Cataluña	28,672	4,315	63,111	12,140	2.28	2,007	17,511	13.82	38.79	2,473
Comunitat Valenciana	8,205	1,883	17,379	7,483	2.46	889	7,877	10.14	23.93	1,057
Extremadura	6,443	375	13,473	1,135	2.14	354	3,396	13.83	37.14	485
Galicia	8,915	2,844	17,298	4,762	1.88	368	4,486	15.81	31.64	566
Madrid, Comunidad de	2,562	218	6,521	282	2.45	87	931	23.53	56.54	116
Murcia, Región de	2,544	186	5,924	485	2.35	136	1,905	10.84	31.67	228
Navarra, Comunidad Foral de	12,948	1,764	30,983	3,006	2.31	644	4,617	23.53	53.91	831
País Vasco	6,164	1,514	14,074	3,440	2.28	220	2,381	23.55	48.03	296
Rioja, La	3,845	143	8,412	250	2.17	127	1,192	23.20	58.25	138
Ceuta	-	-	-	-	-	-	-	-	-	-
Melilla	-	-	-	-	-	-	-	-	-	-

² To facilitate the comparability between data from different Autonomous Communities (and because of the different regulation and different characteristics), a group called rural house has been created, with those establishments with similar typology (location, capacity, etc...). The variables included in the previous table have been estimated with that type of establishments.

7. Travellers and overnight stays by country of residence

Results by countries Provisional data	Travellers		Overnight stays	
	Total	%	Total	%
TOTAL	350,719	100.00	866,588	100.00
Residents Spain	274,333	78.22	594,356	68.59
Residents abroad	76,385	21.78	272,232	31.41
Total Residents abroad	76,385	100.00	272,232	100.00
Total Residents in EU (excluding Spain)	55,469	72.62	216,751	79.62
- Germany	19,043	24.93	92,434	33.95
- Belgium	2,912	3.81	8,741	3.21
- France	8,296	10.86	20,952	7.70
- Italy	1,508	1.97	3,366	1.24
- Netherlands	6,034	7.90	28,036	10.30
- Portugal	1,480	1.94	3,512	1.29
- United Kingdom	11,434	14.97	43,993	16.16
Switzerland	3,146	4.12	14,137	5.19
Other European countries	7,062	9.25	22,566	8.29
United States of America	5,073	6.64	9,896	3.63
Other countries	10,396	13.61	24,600	9.04

Tourist Accommodation Occupancy Survey Hostels Occupancy Survey (HOS) October 2017 Provisional data

1. Travellers, overnight stays and average stay by Autonomous Cities and Communities

Autonomous cities and communities	Travellers			Overnight stays			Average stay
	Total	Residents in Spain	Residents abroad	Total	Residents in Spain	Residents abroad	
TOTAL	88,443	57,920	30,523	208,426	130,178	78,248	2.36
Andalucía	11,417	9,006	2,411	34,928	28,441	6,487	3.06
Aragón	1,837	1,682	155	3,810	3,538	272	2.07
Asturias, Principado de	643	507	136	1,029	808	221	1.60
Balears, Illes	-	-	-	-	-	-	-
Canarias	2,256	668	1,588	6,828	1,748	5,080	3.03
Cantabria	1,330	1,155	175	2,596	2,275	321	1.95
Castilla y León	3,903	3,793	110	8,325	8,130	195	2.13
Castilla - La Mancha	3,642	3,490	152	7,073	6,817	256	1.94
Cataluña	36,849	21,101	15,748	84,335	41,657	42,677	2.29
Comunitat Valenciana	8,688	4,442	4,246	21,425	10,279	11,147	2.47
Extremadura	822	763	59	2,286	2,109	177	2.78
Galicia	310	261	50	561	395	166	1.81
Madrid, Comunidad de	4,916	2,087	2,829	10,118	4,515	5,603	2.06
Murcia, Región de	-	-	-	-	-	-	-
Navarra, Comunidad Foral de	2,154	1,689	465	5,141	4,333	808	2.39
País Vasco	8,846	6,476	2,370	18,218	13,417	4,801	2.06
Rioja, La	625	602	23	1,026	1,003	23	1.64
Ceuta	-	-	-	-	-	-	-
Melilla	-	-	-	-	-	-	-
Annual rate	9.24	10.59	6.75	20.11	29.56	7.13	9.96
Cumulative annual rate	1.75	1.06	3.21	7.72	8.36	6.34	5.86

2. Open establishments, capacity, occupancy and number of staff by autonomous cities and communities

Autonomous cities and communities	Capacity		Occupancy rate		Employed personnel
	Estimated open establishments	Estimated bed-places	Of bed-places	Of bed-places at weekend	
TOTAL	229	24,834	27.07	37.16	2,672
Andalucía	18	3,600	31.30	39.54	218
Aragón	19	1,566	7.85	11.84	84
Asturias, Principado de	4	308	10.77	16.14	15
Balears, Illes	-	-	-	-	-
Canarias	26	489	45.05	44.80	49
Cantabria	8	516	16.23	30.98	30
Castilla y León	22	2,047	13.12	29.24	145
Castilla - La Mancha	23	2,466	9.25	19.75	94
Cataluña	39	6,071	44.81	59.00	346
Comunitat Valenciana	13	2,133	32.41	42.56	100
Extremadura	9	750	9.83	23.00	1,105
Galicia	4	503	3.60	6.56	21
Madrid, Comunidad de	7	747	43.69	63.02	203
Murcia, Región de	-	-	-	-	-
Navarra, Comunidad Foral de	10	784	21.15	18.37	52
País Vasco	20	2,430	24.18	27.61	169
Rioja, La	5	245	13.49	28.64	11
Ceuta	-	-	-	-	-
Melilla	-	-	-	-	-
Annual rate	16.40	7.02	12.24	0.56	75.46
Cumulative annual rate	9.45	2.83	4.84	0.41	10.96

3. Travellers and overnight stays by countries of residence

Countries	Travellers		Overnight stays		Average stay
	Total	%	Total	%	
TOTAL	88,443	100.00	208,426	100.00	2.36
Residents in Spain	57,920	65.49	130,178	62.46	2.25
Residents abroad	30,523	34.51	78,248	37.54	2.56
TOTAL residents abroad	30,523	100.00	78,248	100.00	2.56
TOTAL residents in E.U. (excluding Spain)	20,358	66.70	51,736	66.12	2.54
- Germany	4,451	14.58	13,619	17.40	3.06
- Belgium	398	1.30	1,155	1.48	2.90
- France	4,617	15.13	9,367	11.97	2.03
- Italy	2,808	9.20	8,283	10.59	2.95
- Netherlands	885	2.90	2,248	2.87	2.54
- Portugal	551	1.80	1,168	1.49	2.12
- United Kingdom	3,338	10.94	7,718	9.86	2.31
Switzerland	414	1.36	1,151	1.47	2.78
Other European countries	5,484	17.97	13,582	17.36	2.48
United States of America	1,262	4.13	2,887	3.69	2.29
Other countries	6,316	20.69	17,070	21.82	2.70

HOLIDAY DWELLING PRICE INDEX (HDPI)

October 2017

Provisional data

National general index and breakdown by rates

	Index	Annual variation rate
TOTAL	129.40	6.41
Normal	124.41	5.84
Weekend	132.13	1.40
Tour-operators and travel agencies	134.85	7.59

National general index and breakdown by modalities

	Index	Annual variation rate
TOTAL	129.40	6.41
Studio	128.53	2.91
Dwellings 2/4 bedplaces	128.25	7.88
Dwellings 4/6 bedplaces	138.81	4.31

Tourist Campsite Price Index (TCSPI). 2002 Base

October 2017

Provisional data

National general index and breakdown by rates

	Index	Annual variation rate
TOTAL	133.65	0.45
Normal rate	130.11	1.43
Special rate for stays up to one month	155.89	1.67
Special rate for stays longer than one month	131.84	1.48
Bungalow rate*	102.77	-0.98

National general index and breakdown by categories

	Index	Annual variation rate
TOTAL	133.65	0.45
Luxury and first	130.55	-0.11
Second	137.88	0.82
Third	101.61	3.05

*2014 Base

TCSPI (ANNEX OF TABLES) - OCTOBER 2017

30th November 2017

Rural Tourism Accommodation Price Index (RTAPI)

October 2017

Provisional data

General Autonomous Cities and Communities and national indices

	Index	Annual variation rate
TOTAL	136.97	2.92
Andalucía	131.81	1.03
Aragón	163.18	7.89
Asturias, Principado de	123.93	7.34
Balears, Illes	122.11	2.22
Canarias	109.81	2.63
Cantabria	188.72	9.76
Castilla y León	140.27	3.81
Castilla - La Mancha	132.50	4.25
Cataluña	140.32	3.89
Comunitat Valenciana	134.92	6.90
Extremadura	102.66	-4.75
Galicia	128.71	-0.98
Madrid, Comunidad de	144.60	0.48
Murcia, Región de	128.56	-4.61
Navarra, Comunidad Foral de	172.13	-1.64
País Vasco	159.66	7.49
Rioja, La	132.50	1.43
Ceuta	-	-
Melilla	-	-

National general index and breakdown by rates

	Index	Annual variation rate
TOTAL	136.97	2.92
Normal	137.10	2.68
Weekend	138.31	3.06

National general index and breakdown by rent modality

	Index	Annual variation rate
TOTAL	136.97	2.92
Shared use (in case of per room rent modality)	124.65	3.12
Full use (rent of entire dwelling)	145.21	2.81