

30 December 2013

**Non-Hotel Tourist Accommodation Occupancy Survey**  
November 2013. *Provisional data*

**Overnight stays in non-hotel tourist accommodation increased 7.2% in November<sup>(1)</sup>, as compared with the same month of 2012**

Overnight stays in non-hotel tourist accommodation (holiday dwellings, campsites and rural tourism accommodation) exceeded 5.1 millions in November, 7.2% more than in the same month of 2012. Overnight stays by resident travellers increased 12.0% and those of non-residents increased 5.8%. The average stay decreased 4.5%, standing at 6.1 overnights per traveller.

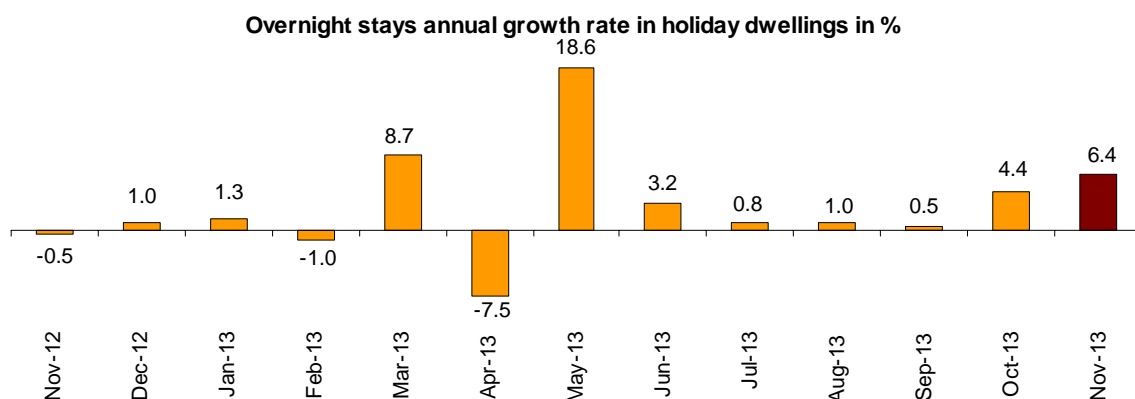
During the first eleven months of 2013, the overnight stays increased 0.9%, as compared with the same period of the previous year.

Travellers and overnight stays in collective non-hotel tourist accommodation during the month of November were:

November 2013	Travellers	Overnight stays
Residents in Spain	409,616	1,177,478
EU (not including Spain)	357,806	3,344,001
Rest of the world	68,566	605,921
<b>TOTAL</b>	<b>835,988</b>	<b>5,127,400</b>

**Holiday Dwellings**

Overnight stays in holiday dwellings increased 6.4% in November. Overnight stays of residents increased 20.4% and overnight stays of non-residents increased 4.3%. The average stay decreased 3.2% standing at 7.6 overnight stays per traveller.

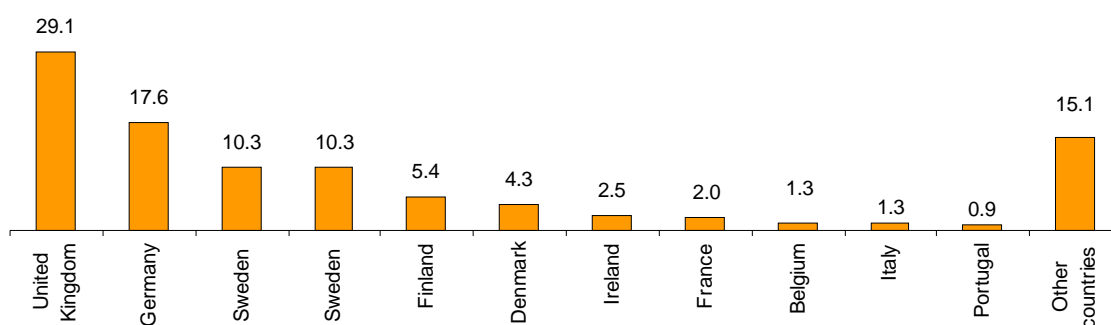


<sup>(1)</sup> Due to the update made in the rural tourist accommodation directory in Región de Murcia, the data published cannot be directly compared to those published last year. In order to avoid this break in the series, linking coefficients have been calculated, allowing for comparing the data from different years. The coefficients are published monthly on the INE website, in the section dedicated to this statistical operation, in a specific section entitled linking coefficient

In November, 33.9% of the bedplaces available for holiday dwellings were occupied, 1.4% more than in the same month of 2012. The weekend occupancy rate by bedplaces stood at 35.8%, with an annual increase of 1.1%.

Non-resident overnight stays in holiday dwellings represented 85.4% of the total. The United Kingdom was the main country of origin, with more than 955,177 overnight stays, 0.1% less than in November 2012. The following country of origin was Germany, with 576,931 overnight stays, 15.5% more.

**Distribution of overnight stays of residents abroad of the 11 main countries by origin**



Canarias and Andalucía were the preferred holiday dwelling destinations, with annual rates of overnight stays of 2.8% and 6.9%, respectively. Canarias registered the highest occupancy rate with 82.1% of the dwellings offered.

By tourist area, the island of Tenerife was the preferred destination, with 977,677 overnight stays. Catalunya Central reached the highest occupancy rate with 91.2% of the dwellings offered.

The tourist sites with the greatest number of overnight stays were San Bartolomé de Tirajana, Arona and Tías.

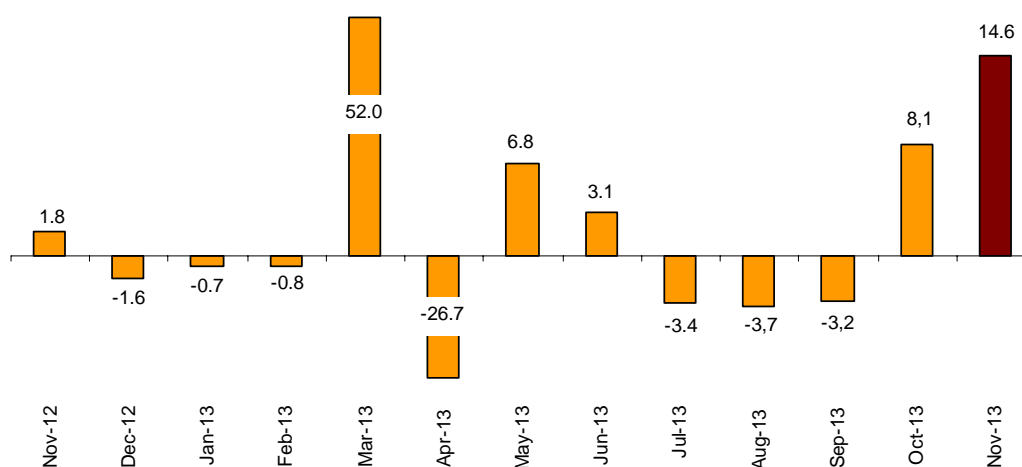
## Campsites

The overnight stays in tourist campsites registered a 14.6% annual decrease in November. Overnight stays by resident travellers increased 11.4%, and those of non-resident travellers increased 16.0%.

During the month of November, 33.0% of the offered pitches were occupied, 3.5% more. The weekend occupancy rate by pitch reached 35.6%, with an annual decrease of 5.7%.

70.0% of the overnight stays on tourist campsites were by non-residents. The United Kingdom was the main country of origin, with 36.5% of the overnight stays by non-residents, 17.5% more than in November 2012.

Overnight stays annual growth rate in campsites in %



Comunitat Valenciana was the preferred destination regarding campsites, with 410,373 overnight stays, 17.6% more than in November 2012. La Rioja reached the highest occupancy rate on campsites, with 61.0% of the pitches offered.

By tourist area, Costa Blanca was the preferred destination for camping, with 247,131 overnight stays and an occupancy rate of 66.9% of the pitches offered.

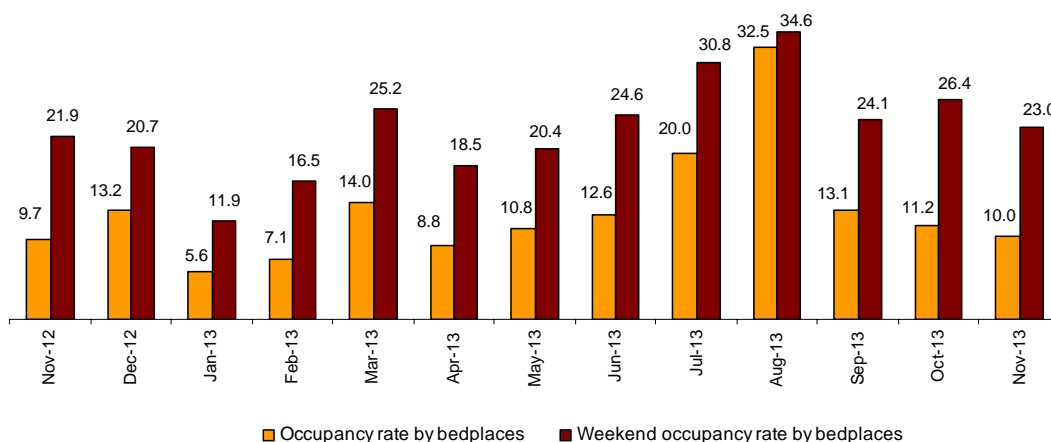
The tourist sites with the highest number of overnight stays were Benidorm, Cartagena and Marbella.

### Rural Tourism Accommodation

Overnight stays in rural tourism accommodation presented an annual increase of 0.6%, in November <sup>(1)</sup>. Residents' overnight stays increased 1.1% while those of non-residents increased 2.4%.

10.0% of the bedplaces in rural tourism accommodation were occupied, representing a 3.1% increase, as compared to November 2012. The weekend occupancy rate stood at 23.0%, with an increase of 4.1%.

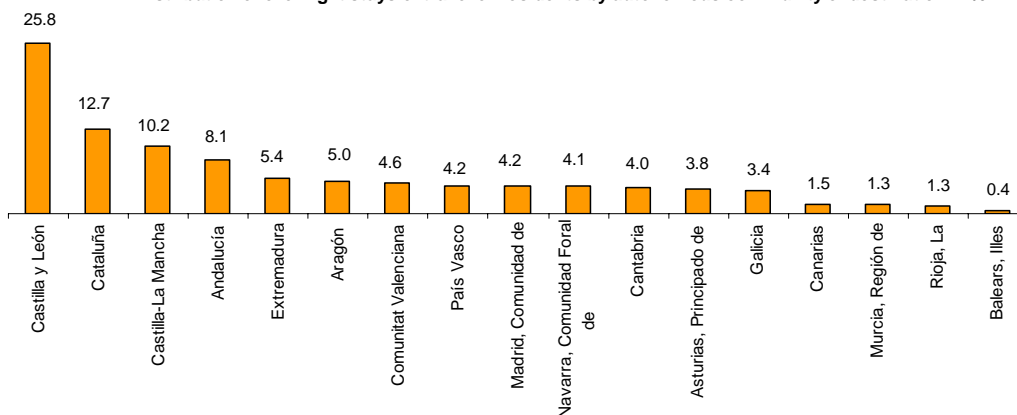
Occupancy rate by bedplaces and bedplaces on weekends



By Autonomous Community, Castilla y León was the preferred destination, with 93,099 overnight stays, 5.4% more than in November 2012. Canarias reached the highest occupancy rate as well, with 25.7% of the offered bedplaces.

By tourist area, Pirineus was the main destination, with 16,055 overnight stays. Parque Nacional del Teide reached the greatest occupancy rate: 40.5% of the offered bedplaces.

Distribution of overnight stays of traveller residents by autonomous community of destination in %



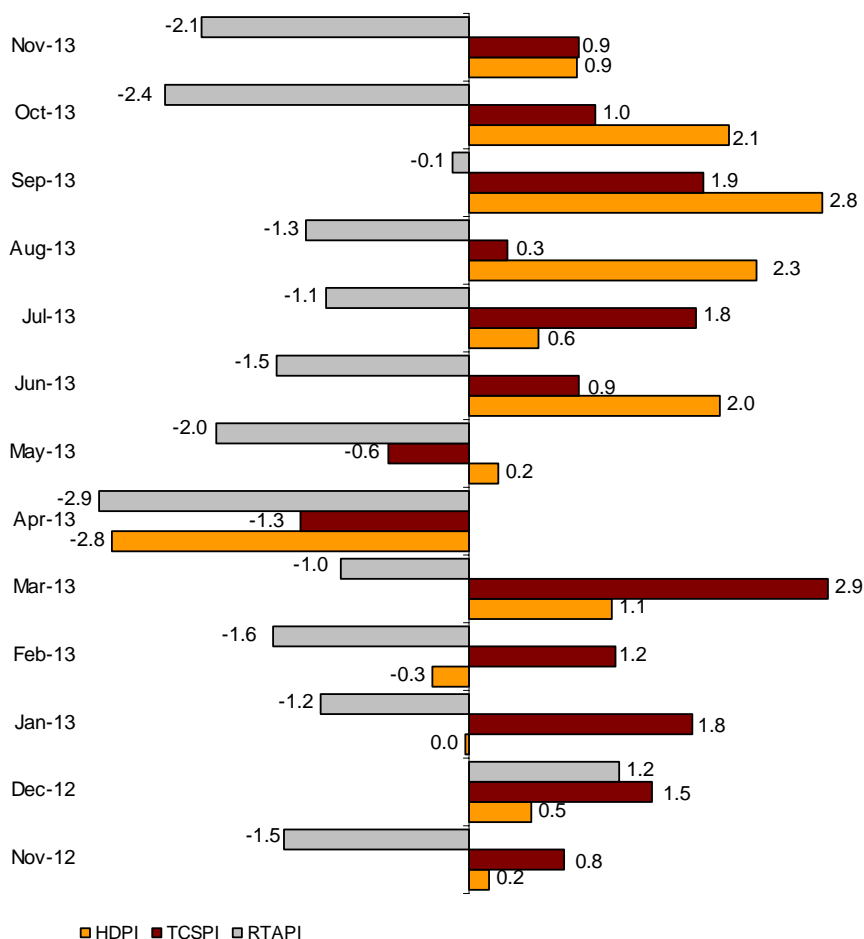
**Price Indices**

The Holiday Dwelling Price Index (HDPI) registered an increase of 0.9%, as compared to November 2012. The tour operators and travel agencies rate, which carried the greatest weight in the weighting structure for this month (60.0%), increased 2.3%.

The Tourist Campsite Price Index (TCPI) increased 0.9% in the annual rate. The normal rate, which had the greatest weight in the weighting structure for November (53.4%), increased by 0.3%.

The Rural Tourism Accommodation Price Index (RTAPI) registered a 2.1% decrease in November. The weekend rate, which accounted for 75.2% of the total weight, decreased 2.2%.

**Price Indices. Annual variation rates**



## Evolution of travellers and overnight stays in all Spanish collective tourist accommodation

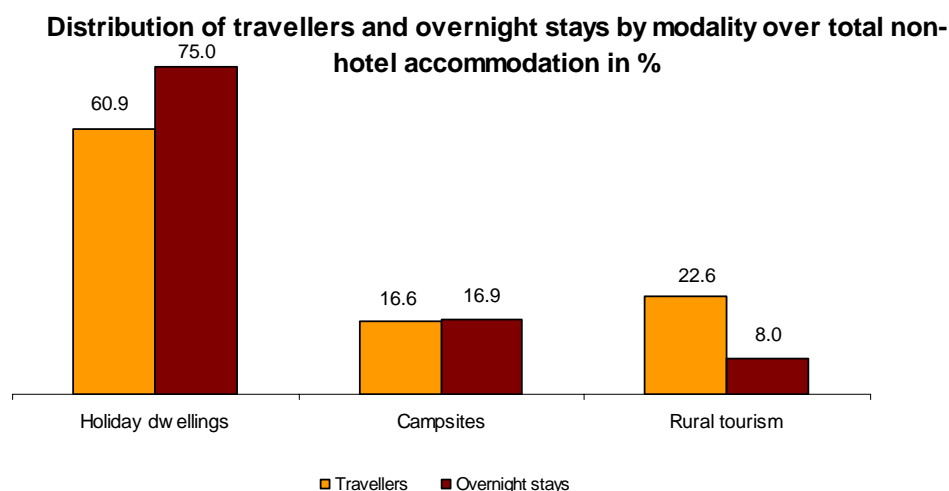
Overnight stays in Spanish collective tourist accommodation (hotels, holiday dwellings, campsites and rural tourism accommodation) registered a 8.2% increase in November <sup>(1)</sup>, as compared with the same month of the previous year. Overnight stays of residents decreased 12.6%, whereas those of non-residents increased 5.9%.

The average stay increases 0.5% as compared to November 2012, standing at 3.4 overnight stays per traveller.

Travellers and overnight stays in collective tourist accommodation were:

November 2013	Holiday dwellings	Campsites	Rural T.	Non-hotel	Hotels	Total
<b>Travellers</b>	509,012	138,376	188,602	835,990	5,107,178	5,943,168
Residents	137,745	95,464	176,407	409,616	2,957,459	3,367,075
Non-residents	371,266	42,912	12,194	426,372	2,149,719	2,576,091
<b>Overnight stays</b>	3,847,552	868,885	410,963	5,127,400	15,043,317	20,170,717
Residents	563,606	260,959	352,913	1,177,478	6,184,646	7,362,124
Non-residents	3,283,946	607,926	58,050	3,949,922	8,858,671	12,808,593

Of the total overnight stays in collective tourist accommodation, 75% were accounted for hotels, and 25% did so for non-hotel tourist accommodation.



The main countries of origin in overall regulated tourist accommodation were the United Kingdom (with 24.5% of the total number of non-resident overnight stays), Germany (22.2%) and France (4.6%).

Canarias was the preferred destination regarding overall tourist accommodation, with over 8 million overnight stays (8.7% more than in November 2012). Followed by Andalucía, with over 2.4 million overnight stays (10.4% more) and Cataluña, with over 2.4 million overnight stays (9.3% more).

## Tourist Accommodation Occupancy Survey (Holiday Dwellings)

November 2013 Provisional data

### 1. Travellers, overnight stays and average stay by Autonomous Cities and Communities

Autonomous Cities and Communities	Travellers			Overnight stays			Average stay
	Total	Residents in Spain	Residents abroad	Total	Residents in Spain	Residents abroad	
TOTAL	509,012	137,745	371,266	3,847,552	563,606	3,283,946	7.56
Andalucía	60,992	26,653	34,339	293,367	68,483	224,884	4.81
Aragón	6,454	5,887	567	19,150	16,045	3,105	2.97
Asturias, Principado de	1,292	1,243	49	3,653	3,219	434	2.83
Balears, Illes	4,396	700	3,696	29,327	2,255	27,072	6.67
Canarias	308,759	26,091	282,668	2,759,771	141,822	2,617,949	8.94
Cantabria	2,052	1,836	216	7,688	6,027	1,661	3.75
Castilla y León	6,956	6,830	126	17,278	16,448	829	2.48
Castilla - La Mancha	6,062	5,379	683	17,194	13,263	3,931	2.84
Cataluña	29,118	15,495	13,624	235,069	125,434	109,635	8.07
Comunitat Valenciana	44,359	20,010	24,349	288,652	69,628	219,024	6.51
Extremadura	2,359	2,271	88	4,261	4,114	147	1.81
Galicia	2,482	2,232	250	8,005	7,010	996	3.23
Madrid, Comunidad de	22,071	14,316	7,755	103,574	55,497	48,077	4.69
Murcia, Región de	3,908	1,846	2,062	33,471	12,279	21,192	8.56
Navarra, Comunidad Foral de	3,462	3,201	261	12,368	10,519	1,849	3.57
País Vasco	1,957	1,500	457	9,688	6,624	3,064	4.95
Rioja, La	2,333	2,256	76	5,037	4,939	98	2.16
Ceuta	-	-	-	-	-	-	-
Melilla	-	-	-	-	-	-	-
Annual rate	9.90	24.37	5.36	6.35	20.36	4.27	-3.23
Cumulative annual rate	4.23	3.68	4.51	2.74	-0.89	3.89	-1.43

### 2. Capacity, occupancy and number of staff by Autonomous Cities and Communities

Autonomous Cities and Communities	Capacity		Level of occupancy				Employed personnel
	Estimated bedplaces	Estimated Holiday dwelling	Per bedplaces	Per bedplaces at weekend	Per Holiday dwelling	Per Holiday dwelling at weekend	
TOTAL	377,326	102,672	33.87	35.84	57.69	59.38	18,679
Andalucía	47,995	12,476	20.39	24.32	34.66	39.27	2,527
Aragón	5,940	1,371	10.74	21.03	17.87	29.23	399
Asturias, Principado de	3,551	883	3.43	4.82	7.26	9.38	206
Balears, Illes	3,272	921	29.88	32.27	50.63	52.10	330
Canarias	168,991	52,799	54.17	54.17	82.07	81.51	9,710
Cantabria	2,386	702	10.74	13.53	19.57	23.42	151
Castilla y León	4,699	1,002	12.22	25.97	18.75	32.63	420
Castilla - La Mancha	4,665	1,182	12.28	24.71	17.16	30.94	366
Cataluña	31,930	7,648	24.60	26.44	40.91	42.65	1,184
Comunitat Valenciana	80,507	16,675	11.95	13.99	24.41	27.35	1,871
Extremadura	1,644	402	8.63	16.63	11.59	21.21	130
Galicia	2,882	820	9.24	12.71	19.48	22.80	178
Madrid, Comunidad de	7,528	3,112	45.65	50.98	62.86	65.64	503
Murcia, Región de	6,728	1,557	16.58	18.38	32.54	34.73	216
Navarra, Comunidad Foral de	1,937	440	21.25	30.03	34.72	42.16	309
País Vasco	1,524	427	21.15	28.06	42.57	48.78	84
Rioja, La	1,147	257	14.57	37.70	20.29	48.87	95
Ceuta	-	-	-	-	-	-	-
Melilla	-	-	-	-	-	-	-
Annual rate	4.81	2.72	1.42	1.09	4.35	3.72	0.34
Cumulative annual rate	2.31	2.23	0.48	0.61	1.29	1.38	3.40

### 3. Travellers, overnight stays, capacity, occupancy, total number of staff with greater number of overnight stays \*

Provinces	Travellers		Overnight stays		Average stay	Capacity		Level of occupancy			Employed personnel
	Residents in Spain	Residents abroad	Residents in Spain	Residents abroad		Estimated bed-places	Estimated holiday dwelling	Per bed-places	Per Holiday dwelling	Per Holiday dwelling at weekend	
Palmas, Las	15,744	184,200	89,043	1,753,318	9.21	114,416	35,824	53.41	82.74	81.87	5,969
St Cruz de Tenerife	10,348	98,468	52,779	864,631	8.43	54,575	16,975	55.75	80.65	80.74	3,740
Alicante\Alacant	12,079	21,155	47,880	200,554	7.48	56,634	11,983	14.62	29.46	32.37	1,503
Barcelona	10,817	12,126	112,072	100,831	9.28	18,145	4,693	39.34	61.20	61.18	768
Málaga	5,615	26,506	18,639	184,885	6.34	27,641	6,957	24.64	42.86	45.40	1,571
Sevilla	8,045	3,649	23,245	13,965	3.18	4,367	1,474	28.14	45.25	56.59	264
Valencia\València	6,550	2,927	16,243	13,225	3.11	7,015	1,483	13.99	26.93	35.84	250
Granada	4,047	1,729	9,235	8,585	3.09	3,791	1,044	15.63	23.33	31.42	251
Almería	1,341	809	3,110	10,095	6.14	4,816	1,187	9.14	15.08	15.33	65
Castellón\Castelló	1,380	266	5,505	5,246	6.53	16,858	3,209	2.13	4.38	4.72	118
Girona	2,444	527	6,068	4,323	3.50	9,998	2,186	3.46	6.46	9.33	253
Cádiz	2,575	1,057	4,033	5,714	2.68	2,792	688	11.62	18.53	24.58	162
Tarragona	1,132	971	4,391	4,270	4.12	2,324	483	12.54	19.01	26.17	79
Zaragoza	1,969	474	5,476	2,197	3.14	1,044	291	24.47	43.85	54.72	66
Jaén	2,936	62	6,098	132	2.08	2,217	547	9.36	11.98	21.89	129

### 4. Travellers, overnight stays, capacity, occupancy, total number of staff from tourist areas with greater number of overnight stays

Tourist Areas	Travellers		Overnight stays		Average stay	Capacity		Level of occupancy			Employed personnel
	Residents in Spain	Residents abroad	Residents in Spain	Residents abroad		Estimated bed-places	Estimated holiday dwelling	Per bed-places	Per Holiday dwelling	Per Holiday dwelling at weekend	
Isla de Gran Canaria	4,914	93,544	32,149	945,528	9.93	57,640	18,658	56.31	85.62	84.91	2,756
Isla de Tenerife	7,801	92,905	40,999	809,330	8.44	48,034	14,739	58.64	84.52	84.60	3,238
Isla de Lanzarote	6,692	68,928	37,774	588,292	8.28	39,101	11,865	53.13	83.02	81.70	2,354
Costa Blanca	11,460	21,043	45,898	199,795	7.56	55,176	11,687	14.84	29.83	32.67	1,435
Isla de Fuerteventura	4,138	21,727	19,119	219,498	9.23	17,675	5,300	44.61	71.95	71.57	859
Costa del Sol	5,019	26,046	17,074	182,722	6.43	25,910	6,545	25.70	44.73	47.18	1,508
Catalunya Central	436	16	59,972	15,157	30.00	2,826	1,009	88.58	91.15	92.39	56
Barcelona	3,018	8,630	10,252	30,931	3.54	3,488	943	39.25	62.38	69.06	300
Isla de la Palma	1,534	3,245	6,207	30,010	7.58	3,102	1,057	38.90	57.23	58.11	247
Isla de la Gomera	790	2,278	4,737	25,136	9.74	3,080	1,065	32.58	57.24	56.54	232

### 5. Travellers, overnight stays, capacity, occupancy, total number of staff from tourist sites with greater number at overnights stays

Tourist sites	Travellers		Overnight stays		Average stay	Capacity		Level of occupancy			Employed personnel
	Residents in Spain	Residents abroad	Residents in Spain	Residents abroad		Estimated bed-places	Estimated holiday dwelling	Per bed-places	Per Holiday dwelling	Per Holiday dwelling at weekend	
San Bartolomé de Tirajana	4,021	55,111	29,179	575,230	10.22	38,004	11,863	52.70	85.65	85.11	1,791
Arona	1,299	40,904	7,024	364,730	8.81	20,521	6,420	60.33	84.94	85.01	1,344
Tías	3,271	37,067	18,738	328,841	8.62	20,388	6,553	56.51	84.12	82.83	1,113
Mogán	434	36,493	2,064	343,406	9.36	18,431	6,229	62.41	85.30	84.12	887
Adeje	1,985	25,587	11,256	233,916	8.89	14,459	4,084	55.80	82.65	82.95	978
Teguise	2,781	16,319	14,374	146,904	8.44	11,463	3,434	46.67	81.01	79.01	699
Benidorm	3,102	11,529	19,974	105,005	8.54	16,817	4,150	24.77	42.97	44.98	649
Puerto de la Cruz	3,664	10,809	18,928	101,914	8.35	6,287	2,405	63.77	88.86	89.42	435
Madrid	14,119	7,702	52,636	46,230	4.53	6,876	2,838	47.69	65.16	68.17	434
Castelldefels	6,558	3,102	39,186	53,246	9.57	10,723	2,388	28.73	53.35	48.91	379

\* Provinces belonging to uniprovincial Autonomous Communities have not been included because they are reflected in previous tables.



## 6. Travellers and overnight stays by countries of residence

Countries	Travellers		Overnight stays	
	Total	%	Total	%
TOTAL	509,012	100.00	3,847,552	100.00
Residents in Spain	137,745	27.06	563,606	14.65
Residents abroad	371,266	72.94	3,283,946	85.35
Total residents abroad	371,266	100.00	3,283,946	100.00
Total residents in E.U (excluding Spain)	307,597	82.85	2,709,337	82.50
- Germany	52,912	14.25	576,931	17.57
- Austria	2,503	0.67	23,982	0.73
- Belgium	4,238	1.14	41,416	1.26
-Denmark	16,355	4.41	142,560	4.34
- Finland	20,592	5.55	178,174	5.43
- France	10,072	2.71	67,029	2.04
- Greece	365	0.10	3,206	0.10
- Ireland	10,506	2.83	81,684	2.49
- Italy	7,156	1.93	41,124	1.25
- Luxembourg	790	0.21	7,306	0.22
- Netherlands	15,859	4.27	150,162	4.57
- Poland	2,360	0.64	15,953	0.49
- Portugal	1,805	0.49	29,999	0.91
- United Kingdom	118,356	31.88	955,177	29.09
- Czech Republic	1,149	0.31	12,303	0.37
- Sweden	37,713	10.16	336,831	10.26
- Other EU countries	4,866	1.31	45,500	1.39
Norway	33,779	9.10	358,926	10.93
Other european countries	12,761	3.44	109,270	3.33
United States of America	3,596	0.97	16,844	0.51
Rest of America	4,811	1.30	39,839	1.21
African countries	2,618	0.71	10,517	0.32
Other countries	6,103	1.64	39,212	1.19

**Tourist Accommodation Occupancy Survey  
Campsite Occupancy Survey (COS)  
November 2013**

Provisional data

**1. Travellers, overnight stays and average stay by category of establishment**

Category	Travellers			Overnight stays			Average stay
	Total	Residents in Spain	Residents abroad	Total	Residents in Spain	Residents abroad	
TOTAL	138,376	95,464	42,912	868,885	260,959	607,926	6.28
Luxury and first-class	55,037	34,048	20,989	364,375	105,005	259,370	6.62
Second-class	67,823	48,537	19,286	468,998	130,304	338,694	6.92
Third-class	15,516	12,879	2,637	35,512	25,650	9,862	2.29
Annual rate	20.79	20.00	22.57	14.57	11.37	16.00	-5.15
Cumulative annual rate	1.80	0.22	5.15	-0.76	-4.60	3.66	-2.51

**2. Open establishments, capacity, occupancy and number of staff by category of establishments**

Category	Estimated open establishments	Capacity		Occupied pitches	Occupancy rate per pitch	Weekend occupancy rate	Employed personnel
		Estimated bedplaces	Estimated pitches				
TOTAL	478	298,631	93,308	924,058	33.01	35.62	3,075
Luxury and first-class	132	124,537	38,335	350,720	30.50	33.27	1,381
Second-class	266	151,772	47,917	499,863	34.77	36.83	1,461
Third-class	81	22,322	7,056	73,475	34.71	38.89	233
Annual rate	-0.71	1.70	1.26	4.79	3.48	5.66	7.70
Cumulative annual rate	0.41	1.10	0.49	0.87	0.50	-0.61	0.87

**3. Travellers, overnight stays and average stay by Autonomous Cities and Communities**

Autonomous cities and communities	Travellers			Overnight stays			Average stay
	Total	Residents in Spain	Residents abroad	Total	Residents in Spain	Residents abroad	
TOTAL	138,376	95,464	42,912	868,885	260,959	607,926	6.28
Andalucía	22,806	11,176	11,630	142,384	35,492	106,892	6.24
Aragón	5,637	4,733	904	14,550	12,966	1,583	2.58
Asturias, Principado de	1,218	1,063	155	2,012	1,706	306	1.65
Balears, Illes	-	-	-	-	-	-	-
Canarias	1,074	968	106	6,615	2,433	4,182	6.16
Cantabria	816	816	-	1,529	1,529	-	1.87
Castilla y León	3,509	1,837	1,672	6,392	4,196	2,195	1.82
Castilla - La Mancha	1,789	1,670	119	3,940	3,657	283	2.20
Cataluña	47,487	40,104	7,383	143,823	96,914	46,909	3.03
Comunitat Valenciana	28,152	13,750	14,402	410,373	54,714	355,659	14.58
Extremadura	2,358	1,591	767	4,465	3,199	1,266	1.89
Galicia	600	552	48	1,022	956	66	1.70
Madrid, Comunidad de	8,547	7,673	874	21,806	19,558	2,248	2.55
Murcia, Región de	5,243	2,088	3,155	90,455	7,005	83,450	17.25
Navarra, Comunidad Foral de	2,711	2,323	388	5,749	5,097	653	2.12
País Vasco	2,681	1,946	736	6,535	5,158	1,377	2.44
Rioja, La	3,749	3,176	572	7,236	6,379	857	1.93
Ceuta	-	-	-	-	-	-	-
Melilla	-	-	-	-	-	-	-

#### 4. Open establishments, capacity, occupancy and number of staff by autonomous cities and communities

Autonomous cities and communities	Estimated open establishments	Capacity		Occupied pitches	Occupancy rate per pitch	Weekend occupancy rate	Employed personnel
		Estimated bedplaces	Estimated pitches				
TOTAL	478	298,631	93,308	924,058	33.01	35.62	3,075
Andalucía	105	61,940	19,559	116,145	19.79	20.27	600
Aragón	39	15,909	4,942	30,024	20.25	20.51	139
Asturias, Principado de	6	4,334	1,277	8,450	22.07	23.76	19
Balears, Illes	-	-	-	-	-	-	-
Canarias	5	3,524	1,318	7,576	19.16	20.49	19
Cantabria	7	4,391	1,594	17,051	35.65	37.92	19
Castilla y León	30	10,669	3,464	18,422	17.73	21.91	82
Castilla - La Mancha	15	4,930	1,476	14,373	32.46	28.77	35
Cataluña	91	69,816	20,546	198,224	32.16	38.91	648
Comunitat Valenciana	86	62,189	19,606	289,170	49.16	49.98	880
Extremadura	12	4,155	1,378	8,723	21.10	25.07	78
Galicia	18	5,434	1,802	4,140	7.66	8.49	70
Madrid, Comunidad de	20	17,631	5,909	83,464	47.08	50.82	179
Murcia, Región de	17	14,115	4,657	54,563	39.06	41.93	140
Navarra, Comunidad Foral de	10	6,255	1,661	17,893	35.91	32.22	65
País Vasco	11	5,829	1,828	13,887	25.32	30.30	51
Rioja, La	7	7,510	2,292	41,953	61.01	65.45	51
Ceuta	-	-	-	-	-	-	-
Melilla	-	-	-	-	-	-	-

#### 5. Travellers and overnight stays, average stay, capacity, occupancy and number of staff by provinces with the greatest number of overnight stays\*

Provinces	Travellers		Overnight stays		Average stay	Estimated open establishments	Estimated pitches	Occupancy rate per pitch	Employed personnel
	Residents in Spain	Residents abroad	Residents in Spain	Residents abroad					
	Spain	Spain	Spain	Spain					
Alicante\Alacant	2,764	7,539	24,005	264,069	27.96	33	9,176	61.08	390
Castellón\Castelló	3,601	4,950	11,537	65,914	9.06	28	5,573	35.72	241
Barcelona	18,596	3,476	44,384	31,831	3.45	28	7,290	34.40	209
Málaga	2,426	4,859	10,853	60,118	9.74	28	4,684	32.16	146
Valencia\València	7,386	1,913	19,172	25,676	4.82	24	4,858	42.07	249
Girona	10,575	2,559	21,775	10,442	2.45	30	6,033	25.89	227
Almería	1,039	1,912	6,904	23,359	10.25	18	2,543	24.72	97
Tarragona	5,488	1,303	16,861	4,544	3.15	17	4,474	26.92	152
Lleida	5,444	45	13,894	92	2.55	16	2,749	48.50	61
Cádiz	1,242	1,871	2,648	10,639	4.27	13	3,074	15.60	114
Granada	1,315	1,562	2,666	8,735	3.96	20	2,277	12.71	97
Huesca	3,354	434	8,037	575	2.27	24	3,307	25.27	90
Huelva	2,095	460	5,749	2,378	3.18	9	4,577	13.58	70
Zaragoza	522	397	2,757	872	3.95	5	560	19.53	26
Córdoba	1,311	325	3,008	510	2.15	5	999	14.19	26

\* Provinces belonging to uniprovincial Autonomous Communities have not been included because they are reflected in previous tables.

### 6. Travellers, overnight stays, average stay, open establishments, capacity, occupancy and number of staff from tourist areas with the greatest number of overnight stays

Tourist areas	Travellers		Overnight stays		Average stay	Estimated open establishments	Estimated pitches	Occupancy rate per pitch	Employed personnel
	Residents in	Residents abroad	Residents in	Residents abroad					
	Spain		Spain						
Costa Blanca	1,911	5,489	16,299	231,131	30.00	26	6,997	66.92	330
Costa Cálida	870	2,352	2,828	75,223	24.22	9	3,775	40.66	113
Costa de Castellón	2,161	4,733	8,997	65,131	10.75	25	5,291	35.08	230
Costa del Sol	1,086	3,345	8,659	56,252	14.65	13	3,326	40.24	108
Costa Barcelona	8,398	3,467	22,069	31,723	4.53	10	5,143	28.72	124
Pirineus	18,704	44	38,405	160	2.06	35	5,075	49.16	145
Costa Valencia	2,965	1,711	10,152	24,385	7.39	10	3,074	42.72	176
Costa de Almería	659	1,895	6,060	20,838	10.53	12	2,089	24.79	69
Costa Brava	4,132	2,542	9,340	10,321	2.95	17	4,494	18.97	173
Costa Daurada	4,903	901	14,688	3,076	3.06	13	3,665	31.28	125
Costa de la Luz (Cádiz)	722	1,343	1,896	8,949	5.25	9	2,466	14.79	96
Catalunya Central	3,120	10	9,291	108	3.00	9	1,057	40.90	48
Pirineo Aragonés	3,196	434	7,857	575	2.32	20	3,059	23.72	83
Costa Tropical	427	704	1,222	5,775	6.19	7	1,058	19.13	40
Costa de la Luz (Huelva)	827	390	4,076	1,650	4.70	6	4,052	10.38	50

### 7. Travellers, overnight stays, average stay, open establishments, capacity, occupancy and number of staff from tourist sites with the greatest number at overnights stays

Tourist sites	Travellers		Overnight stays		Average stay	Estimated open establishments	Estimated pitches	Occupancy rate per pitch	Employed personnel
	Residents in	Residents abroad	Residents in	Residents abroad					
	Spain		Spain						
Benidorm	439	1,904	5,857	133,196	30.00	9	3,812	68.52	141
Cartagena	166	1,258	913	45,840	30.00	3	2,537	31.44	64
Marbella	279	1,419	6,338	27,122	19.71	3	1,310	41.46	39
Mazarrón	50	998	1,104	23,887	23.85	3	874	57.58	34
Oliva	101	1,158	1,735	18,405	16.00	5	1,253	29.61	76
Cabanes	319	890	792	18,429	15.90	3	964	34.70	76
Vélez-Málaga	398	837	1,627	17,281	15.31	4	806	45.44	35
Peñíscola	528	1,626	1,837	13,960	7.33	8	1,287	30.06	50
Campello, El	54	454	2,349	6,184	16.80	3	301	52.38	15
Fortuna	128	605	1,051	4,637	7.76	3	199	50.49	4
Motril	454	415	807	4,188	5.75	3	586	26.48	28
Enguera	2,428	-	4,547	-	1.87	3	297	61.65	21

## 8. Travellers and overnight stays by countries of residence

Countries	Travellers		Overnight stays	
	Total	%	Total	%
TOTAL	138,376	100.00	868,885	100.00
Residents in Spain	95,464	68.99	260,959	30.03
Residents abroad	42,912	31.01	607,926	69.97
TOTAL residents abroad	42,912	100.00	607,926	100.00
TOTAL residents in E.U. (excluding Spain)	39,891	92.96	584,343	96.12
- Germany	9,764	22.75	146,694	24.13
- Austria	394	0.92	4,108	0.68
- Belgium	1,755	4.09	25,837	4.25
- Denmark	423	0.99	9,541	1.57
- Finland	904	2.11	9,752	1.60
- France	7,569	17.64	42,701	7.02
- Greece	48	0.11	87	0.01
- Ireland	347	0.81	3,784	0.62
- Italy	537	1.25	2,390	0.39
- Luxembourg	150	0.35	877	0.14
- Netherlands	5,976	13.93	92,125	15.15
- Poland	153	0.36	820	0.13
- Portugal	222	0.52	843	0.14
- United Kingdom	9,696	22.59	221,911	36.50
- Czech Republic	292	0.68	704	0.12
- Sweden	1,369	3.19	21,023	3.46
- Other EU countries	292	0.68	1,148	0.19
Other European countries	2,130	4.96	19,448	3.20
United States of America	95	0.22	302	0.05
Rest of America	206	0.48	793	0.13
African countries	85	0.20	354	0.06
Other countries	505	1.18	2,687	0.44

## Tourist accommodation occupancy survey (Rural tourist accommodation)

November 2013

Provisional data

### 1. Number of travellers, overnight stays and average stay by Autonomous City and Community

Autonomous Communities	Number of travellers			Number of overnight stays			Average stay
	Total	Residents In Spain	Residents abroad	Total	Residents In Spain	Residents abroad	
<b>TOTAL<sup>1</sup></b>	<b>188,602</b>	<b>176,407</b>	<b>12,194</b>	<b>410,963</b>	<b>352,913</b>	<b>58,050</b>	<b>2.18</b>
Andalucía	15,627	13,212	2,415	42,583	28,566	14,017	2.72
Aragón	8,609	8,181	428	19,149	17,562	1,586	2.22
Asturias, Principado de	6,180	6,122	59	13,596	13,513	83	2.20
Balears, Illes	2,641	828	1,814	9,011	1,319	7,692	3.41
Canarias	5,988	1,756	4,232	30,619	5,198	25,421	5.11
Cantabria	7,628	7,438	190	14,372	14,041	330	1.88
Castilla y León	46,231	45,665	566	93,099	91,080	2,019	2.01
Castilla-La Mancha	17,373	17,282	91	36,719	35,917	802	2.11
Cataluña	23,242	22,884	357	45,603	44,908	695	1.96
Comunitat Valenciana	8,447	8,026	422	17,498	16,209	1,289	2.07
Extremadura	10,198	9,785	412	20,237	19,169	1,067	1.98
Galicia	7,493	7,296	197	12,437	12,008	429	1.66
Madrid, Comunidad de	9,760	9,486	275	15,528	14,844	684	1.59
Murcia, Región de <sup>1</sup>	2,592	2,511	81	4,958	4,691	267	1.91
Navarra, Comunidad Foral de	6,531	6,330	201	15,015	14,420	595	2.30
País Vasco	7,814	7,411	403	15,967	14,988	980	2.04
Rioja, La	2,246	2,194	52	4,574	4,481	94	2.04
Ceuta	-	-	-	-	-	-	-
Melilla	-	-	-	-	-	-	-
Annual rate	12.88	14.69	-8.09	0.60	1.11	-2.35	-10.88
Cumulative annual rate	-5.77	-7.09	1.41	-7.78	-9.67	-1.82	-2.13

### 2. Open rural establishments, bed-places, occupancy rates and employed personnel by Autonomous City and Community

Autonomous Communities	Estimated open rural establishments	Estimated bed-places	Occupancy rate			Employed personnel
			Of bed-places	Of bed-places at weekend	Of bedrooms	
<b>TOTAL<sup>1</sup></b>	<b>14,906</b>	<b>136,372</b>	<b>10.01</b>	<b>22.95</b>	<b>12.49</b>	<b>20,430</b>
Andalucía	1,467	12,733	11.13	21.67	15.54	2,070
Aragón	1,157	9,005	7.06	17.97	7.86	1,303
Asturias, Principado de	1,244	11,309	3.99	8.93	6.17	1,501
Balears, Illes	99	1,764	16.95	20.50	19.29	491
Canarias	641	3,933	25.69	24.05	38.84	902
Cantabria	323	5,430	8.81	19.53	10.52	472
Castilla y León	3,404	29,611	10.44	26.45	11.93	4,726
Castilla-La Mancha	1,413	12,134	10.07	26.35	12.48	1,930
Cataluña	1,694	13,664	11.10	30.88	13.53	2,192
Comunitat Valenciana	989	9,111	6.40	15.17	10.25	1,344
Extremadura	523	6,321	10.66	25.41	14.68	782
Galicia	499	6,300	6.57	15.29	7.58	766
Madrid, Comunidad de	235	3,808	13.57	28.08	16.37	508
Murcia, Región de <sup>1</sup>	118	1,750	9.44	24.11	10.35	157
Navarra, Comunidad Foral de	623	4,585	10.87	29.57	12.38	709
País Vasco	372	3,930	13.49	28.61	14.98	458
Rioja, La	105	982	15.40	37.92	15.75	120
Ceuta	-	-	-	-	-	-
Melilla	-	-	-	-	-	-
Annual rate	-2.06	-2.37	3.05	4.13	8.36	-1.05
Cumulative annual rate	-1.08	-1.11	-6.56	-1.80	-4.03	0.24

<sup>1</sup> Due to the updating in the directory of establishments carried out in Región de Murcia, the data to be published since January 2013 (for Navarra and the national total) are not directly comparable with the data published last year, therefore, data link coefficients have been calculated to allow the comparison of data between different years. These coefficients are available in INE website ([www.ine.es](http://www.ine.es))

### 3. Number of travellers, overnight stays and average stay in Provinces with the greatest number of overnight stays<sup>2</sup>

Provinces	Number of travellers			Number of overnight stays			Average stay
	Total	Residents In Spain	Residents abroad	Total	Residents In Spain	Residents abroad	
Santa Cruz de Tenerife	3,987	1,078	2,908	22,522	3,512	19,010	5.65
Ávila	8,873	8,870	3	19,580	19,576	5	2.21
Girona	9,684	9,554	130	18,603	18,352	251	1.92
Cáceres	8,546	8,211	335	17,163	16,281	882	2.01
Segovia	8,763	8,710	53	16,526	16,451	75	1.89
Málaga	3,372	1,661	1,711	15,829	4,876	10,953	4.69
Barcelona	7,678	7,648	31	14,781	14,738	42	1.92
Soria	5,691	5,671	19	11,395	11,362	34	2.00
Cuenca	5,036	5,007	28	11,380	10,673	707	2.26
Burgos	5,305	5,190	115	11,114	9,764	1,349	2.09
Salamanca	5,153	5,102	50	9,828	9,752	76	1.91
Lleida	4,407	4,318	88	9,087	8,957	130	2.06
León	4,758	4,622	136	8,739	8,587	152	1.84
Albacete	3,537	3,537	-	8,361	8,361	-	2.36
Huesca	3,551	3,271	280	8,248	7,244	1,004	2.32

### 4. Open rural establishments, bed-places, occupancy rates and employed personnel in Provinces with the highest number of overnight stays<sup>2</sup>

Provinces	Estimated open rural establishments	Estimated bed-places	Occupancy rate			Employed personnel
			Of bed-places	Of bed-places at weekend	Of bedrooms	
Santa Cruz de Tenerife	516	2,950	25.11	23.63	39.05	705
Ávila	778	5,772	11.29	28.58	15.46	1,188
Girona	556	4,594	13.47	37.60	17.60	752
Cáceres	451	5,438	10.51	25.35	14.80	649
Segovia	397	3,622	15.14	41.06	16.42	564
Málaga	587	3,972	13.26	16.60	21.34	679
Barcelona	420	3,668	13.37	38.51	14.93	575
Soria	338	3,120	12.11	32.34	12.14	458
Cuenca	284	2,976	12.72	29.78	15.35	382
Burgos	372	3,781	9.75	26.11	10.68	440
Salamanca	495	3,970	8.17	19.44	8.87	647
Lleida	516	3,690	8.20	21.74	10.51	642
León	465	3,902	7.46	18.30	7.80	696
Albacete	573	3,487	7.98	20.79	9.72	807
Huesca	592	4,367	6.28	16.55	6.95	666

<sup>2</sup> Provinces belonging to uniprovincial Autonomous Communities have not been included because they are reflected in previous tables.

## 5. Number of travellers, overnight stays, average stay, capacity and occupancy rates in areas with the highest number of overnight stays

Areas	Number of travellers		Number of overnight stays		Average stay	Capacity		Occupancy rate		
	Residents In Spain	Residents abroad	Residents In Spain	Residents abroad		Estimated open rural establishments	Estimated bed-places	Of bed-places	Of bed-places at weekend	Of bedrooms
Pirineus	7,758	38	16,012	43	2.06	674	5,108	10.43	29.46	12.47
Pirineo Navarro	6,492	-	14,888	-	2.29	570	4,203	11.76	32.72	13.56
Isla de Tenerife	913	2,139	1,824	11,434	4.34	115	1,149	37.70	34.90	49.94
Costa Brava	6,314	130	11,921	251	1.89	339	2,895	13.99	38.95	17.94
P.Nacional Teide	668	1,699	1,221	9,362	4.47	79	851	40.45	36.22	53.36
Isla de Mallorca	637	1,672	1,013	7,314	3.61	87	1,486	18.59	21.29	20.89
Catalunya Central	4,583	25	8,216	31	1.79	263	2,208	12.42	35.69	14.22
Pirineo Aragonés	3,183	257	6,793	923	2.24	543	4,056	6.32	16.44	6.99
Isla de La Palma	90	477	1,332	5,172	11.46	275	1,181	18.36	17.60	36.95
P.Nacional Picos de Europa	2,283	66	4,396	92	1.91	226	2,187	6.83	14.03	7.96
Isla Gran Canaria	554	760	1,267	3,120	3.34	98	630	23.19	22.91	34.33
Costa Verde	1,561	14	4,346	28	2.78	389	3,947	3.69	6.60	8.69
P.Nacional Taburiente	80	325	895	3,374	10.54	157	698	20.38	20.46	41.01
P.Natural Sierra de Aracena y Picos de Aroche	2,273	60	4,041	186	1.81	105	845	16.65	42.78	21.46
Pirineo Vasco	1,898	60	3,852	137	2.04	127	1,319	10.04	23.47	10.97

## 6. Number of travellers, overnight stays, average stay, capacity, occupancy rates and employed personnel per rural house by Autonomous City and Community<sup>3</sup>

Autonomous Communities	Number of travellers		Number of overnight stays		Average stay	Capacity		Occupancy rate		Employed personnel
	Residents In Spain	Residents abroad	Residents In Spain	Residents abroad		Estimated open rural establish.	Estimated bed-places	Of bed-places	Of bed-places at weekends	
<b>TOTAL</b>	<b>114,295</b>	<b>6,530</b>	<b>243,319</b>	<b>36,640</b>	<b>2.32</b>	<b>12,350</b>	<b>95,509</b>	<b>9.74</b>	<b>23.13</b>	<b>15,728</b>
Andalucía	11,566	2,173	25,738	13,428	2.85	1,443	11,818	11.03	21.37	1,982
Aragón	6,652	305	13,677	805	2.08	857	6,615	7.27	18.95	973
Asturias, Principado de	2,789	20	6,797	20	2.43	825	5,238	4.33	9.86	957
Balears, Illes	323	675	548	2,550	3.10	31	438	23.53	28.81	96
Canarias	754	1,712	3,422	14,241	7.16	612	3,078	19.06	18.51	753
Cantabria	1,620	-	3,544	-	2.19	134	2,034	5.80	13.62	161
Castilla y León	26,703	116	58,225	1,279	2.22	2,908	19,648	10.05	25.89	3,676
Castilla-La Mancha	16,390	87	34,442	799	2.14	1,372	11,281	10.39	27.10	1,846
Cataluña	17,946	287	35,965	589	2.00	1,425	10,819	11.23	31.09	1,826
Comunitat Valenciana	5,457	358	12,583	876	2.31	957	7,362	6.09	13.94	1,249
Extremadura	4,293	204	8,449	581	2.01	323	3,137	9.58	25.68	402
Galicia	4,641	108	8,006	170	1.72	359	4,287	6.35	14.99	510
Madrid, Comunidad de	1,063	-	1,977	-	1.86	65	603	10.90	30.86	87
Murcia, Región de	1,907	14	3,732	152	2.02	110	1,513	8.55	23.81	129
Navarra, Comunidad Foral de	6,330	201	14,420	595	2.30	623	4,585	10.87	29.57	709
País Vasco	3,668	216	7,314	461	2.00	203	2,067	12.50	27.56	251
Rioja, La	2,194	52	4,481	94	2.04	105	982	15.40	37.92	120
Ceuta	-	-	-	-	-	-	-	-	-	-
Melilla	-	-	-	-	-	-	-	-	-	-

<sup>3</sup> To facilitate the comparability between data from different Autonomous Communities (and because of the different regulation and different characteristics), a group called rural house has been created, with those establishments with similar typology (location, capacity, etc...). The variables included in the previous table have been estimated with that type of establishments.



## 7. Travellers and overnight stays by country of residence

Results by countries	Travellers		Overnight stays	
	Total	%	Total	%
TOTAL	188,602	100.00	410,963	100.00
Residents Spain	176,407	93.53	352,913	85.87
Residents abroad	12,194	6.47	58,050	14.13
Total Residents abroad	12,194	100.00	58,050	100.00
Total Residents in EU (excluding Spain)	10,318	84.61	50,321	86.69
- Germany	3,968	32.54	27,384	47.17
- Belgium	313	2.57	963	1.66
- France	1,583	12.98	4,212	7.26
- Italy	502	4.12	1,813	3.12
- Netherlands	981	8.04	4,564	7.86
- Portugal	277	2.27	637	1.10
- United Kingdom	1,887	15.47	6,998	12.06
Switzerland	302	2.48	1,355	2.33
Other European countries	1,446	11.86	7,487	12.90
United States of America	218	1.79	764	1.32
Other countries	716	5.87	1,873	3.23

## HOLIDAY DWELLING PRICE INDEX (HDPI)

November 2013

Provisional data

### National general index and breakdown by rates

	Index	Annual variation rate
TOTAL	106.50	0.86
Normal	105.48	-1.13
Weekend	101.18	-2.96
Tour-operators and travel agencies	108.02	2.32

### National general index and breakdown by modalities

	Index	Annual variation rate
TOTAL	106.50	0.86
Studio	101.60	-2.55
Dwellings 2/4 bedplaces	105.78	1.92
Dwellings 4/6 bedplaces	119.03	-1.93

## **Tourist Campsite Price Index (TCSPI). 2002 Base November 2013**

Provisional data

### **National general index and breakdown by rates**

	Index	Annual variation rate
TOTAL	138.19	0.88
Normal rate	132.48	0.33
Special rate for stays up to one month	128.58	0.68
Special rate for stays longer than one month	143.09	1.59

### **National general index and breakdown by categories**

	Index	Annual variation rate
TOTAL	138.19	0.88
Luxury and first	152.57	2.27
Second	130.47	0.04
Third	132.03	0.35

**Rural Tourism Accommodation Price Index (RTAPI)**

**November 2013**

Provisional data

**General Autonomous Cities and Communities and national indices**

	Index	Annual variation rate
<b>TOTAL</b>	<b>124.34</b>	<b>-2.12</b>
Andalucía	122.34	2.14
Aragón	139.67	-2.37
Asturias, Principado de	125.58	-2.38
Balears, Illes	110.36	1.99
Canarias	104.74	0.54
Cantabria	121.39	-6.87
Castilla y León	123.27	-5.09
Castilla - La Mancha	111.38	-4.22
Cataluña	133.98	-2.70
Comunitat Valenciana	122.32	-2.58
Extremadura	110.06	-3.73
Galicia	116.04	-1.88
Madrid, Comunidad de	136.33	2.92
Murcia, Región de	135.67	10.74
Navarra, Comunidad Foral de	162.95	-1.12
País Vasco	122.03	-1.06
Rioja, La	127.35	-3.96
Ceuta	-	-
Melilla	-	-

**National general index and breakdown by rates**

	Index	Annual variation rate
<b>TOTAL</b>	<b>124.34</b>	<b>-2.12</b>
Normal	121.05	-1.82
Weekend	128.87	-2.22

**National general index and breakdown by rent modality**

	Index	Annual variation rate
<b>TOTAL</b>	<b>124.34</b>	<b>-2.12</b>
Shared use (in case of per room rent modality)	113.83	-1.44
Full use (rent of entire dwelling)	129.07	-2.44