

30 December 2014

**Non-Hotel Tourist Accommodation Occupancy Survey**  
November 2014. *Provisional data*

**Overnight stays in non-hotel tourist accommodation decrease 1.7% in November as compared to the same month of 2013**

Overnight stays in non-hotel tourist accommodation (holiday dwellings, campsites and rural tourism accommodation) exceeded 4.9 million in November, that is, 1.7% less than in the same month of 2013. Overnight stays of resident travellers decreased by 3.3% while those of non-residents did so by 1.3%. The average stay stood at 5.9 overnight stays per traveller.

During the first 11 months of 2014, overnight stays increased by 3.6% as compared to the same period of the previous year.

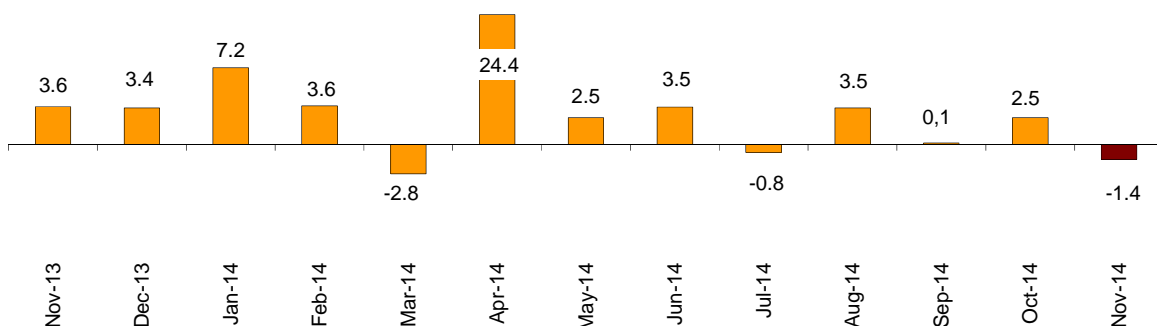
Travellers and overnight stays in collective non-hotel tourist accommodation during the month of November were:

November 2014	Travellers	Overnight stays
Residents in Spain	401,439	1,103,027
EU (not including Spain)	365,016	3,262,221
Rest of the world	64,382	572,167
<b>TOTAL</b>	<b>830,837</b>	<b>4,937,415</b>

**Holiday Dwellings**

Overnight stays in holiday dwellings decreased 1.4% in November. Those of residents decreased by 2.8% and those of non-residents did so by 1.2%. The average stay decreased by 2.5%, standing at 7.3 overnight stays per traveller.

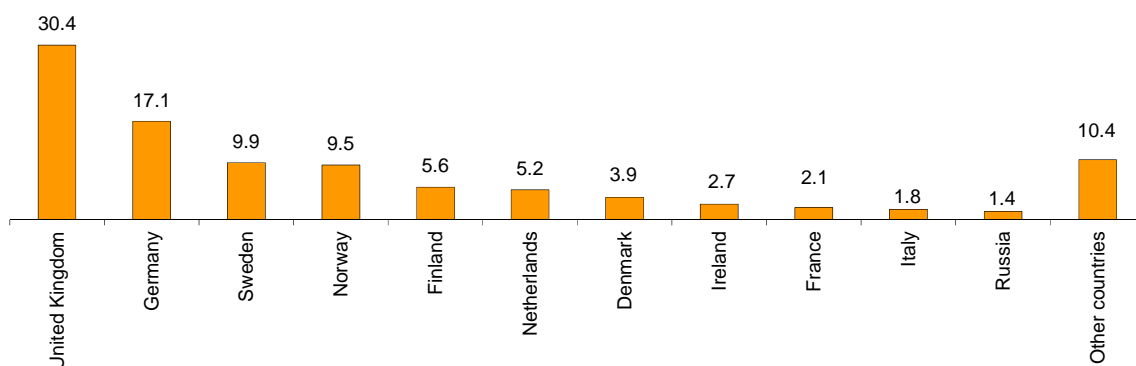
**Overnight stays annual growth rate in holiday dwellings in %**



In November, 34.6% of the bedplaces available for holiday dwellings were occupied, 0.3% less than in the same month of 2013. The weekend occupancy rate by bedplaces stood at 36.3%, with a decrease of 1.5%.

Non-resident overnight stays in holiday dwellings represented 86.2% of the total. The United Kingdom was the main country of origin, with 968,304 million overnight stays, that is, 0.5% more than in November 2013. The following country of origin was Germany, with 544,673 overnight stays, that is, a 3.9% decrease.

**Distribution of overnight stays of residents abroad of the 11 main countries by origin**



Canarias was the preferred holiday dwelling destination, with more than 2.6 million overnight stays, 5.6% less than in November 2013. This Autonomous Community also registered the highest occupancy rate, with 81.2% of the dwellings offered.

By tourist areas, Gran Canaria island was the preferred destination, with 862,604 overnight stays and an occupancy rate of 85.3% of the dwellings offered.

The tourist sites with the greatest number of overnight stays in November were San Bartolomé de Tirajana, Arona and Mogán.

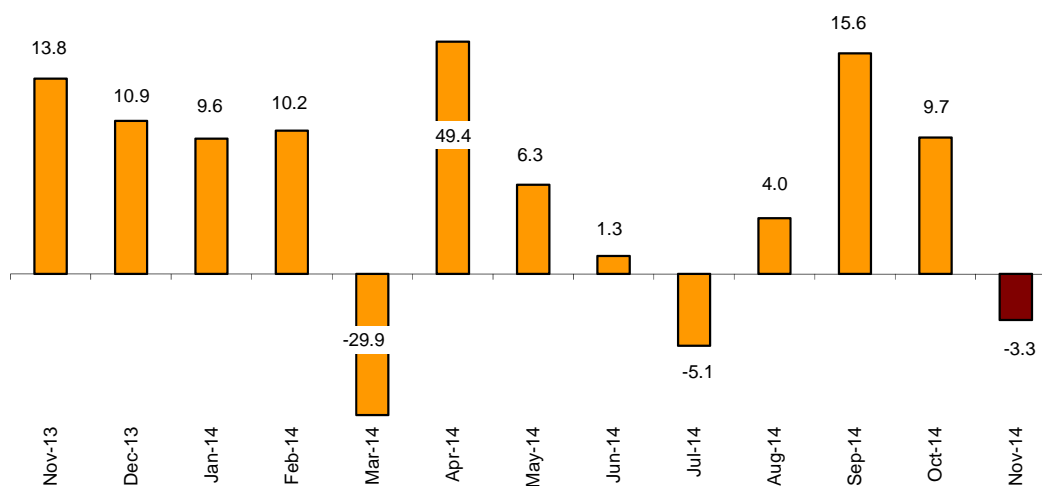
## Campsites

Overnight stays in tourist campsites registered an annual decrease of 3.3% in November. Overnight stays of resident travellers decreased by 5.6% and those of non-resident travellers did so by 2.3%.

In November, 32.5% of the offered pitches were occupied, that is, 1.6% less. The weekend occupancy rate by pitch reached 34.9%, with a 1.6% annual decrease.

70.5% of the overnight stays in tourist campsites were by non-residents. The United Kingdom was the main country of origin, with 32.4% of the overnight stays by non-residents, 12.5% less than in November 2013.

Overnight stays annual growth rate in campsites in %



Comunitat Valenciana was the preferred destination regarding campsites, with 401,492 overnight stays, 0.8% less than in November 2013.

La Rioja was the Autonomous Community with the highest occupancy rate on campsites, with 56.8% of the pitches offered.

By tourist areas, Costa Blanca was the preferred destination for camping, with 229,706 overnight stays and 65.6% of the pitches offered.

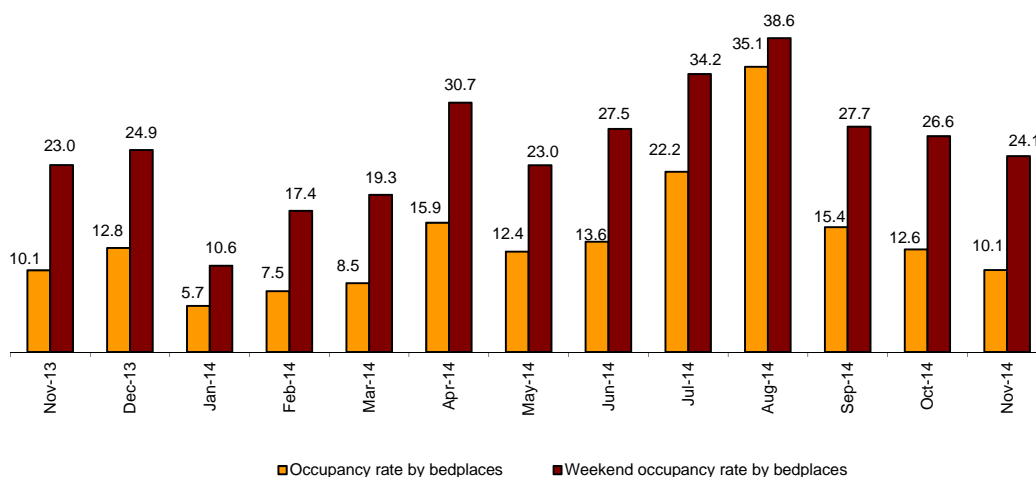
The tourist sites with the highest number of overnight stays were Benidorm, Cartagena and Marbella.

### Rural Tourism Accommodation

Overnight stays in rural tourism accommodation presented an annual decrease of 1.4% in November. Residents' overnight stays decreased by 2.2% while those of non-residents increased by 3.5%.

Regarding rural tourism accommodation, 10.1% of the bedplaces were occupied, that is, a 0.2% increase as compared to November 2013. The weekend occupancy rate stood at 24.1%, with a 4.7% increase.

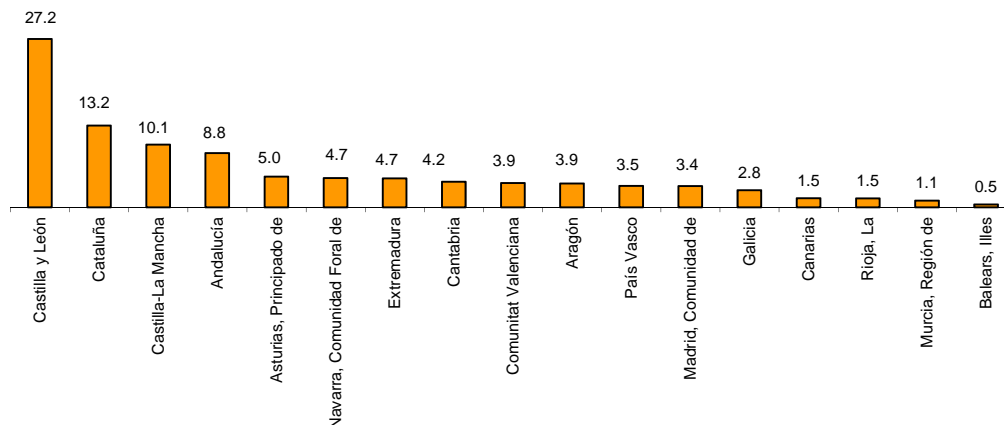
Occupancy rate by bedplaces and bedplaces on weekends



By Autonomous Community, Castilla y León was the preferred destination, with 96,910 overnight stays, 2.8% more than in November 2013. Canarias reached the highest occupancy rate, with 30.0% of the bedplaces offered.

By tourist area, Pirineus was the main destination, with 21,838 overnight stays. Parque Nacional del Teide reached the greatest occupancy rate, with 38.1% of the bedplaces offered.

Distribution of overnight stays of traveller residents by autonomous community of destination in %

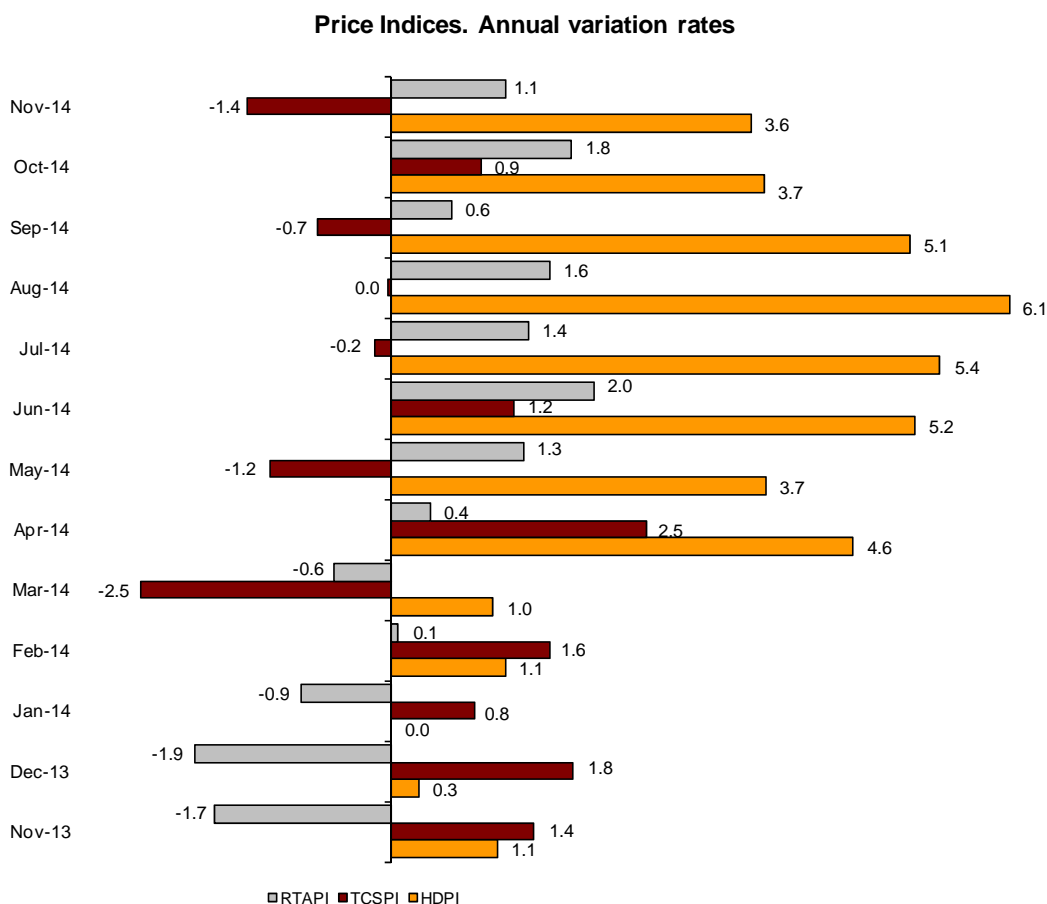


**Price Indices**

The Holiday Dwelling Price Index (HDPI) increased 3.6%, as compared to November 2013. The *tour operators and travel agencies* rate, which carried the greatest weight in the weighting structure for this month (63.6%), increased by 4.4%.

The Tourist Campsite Price Index (TCPI) decreased by 1.4% in the annual rate. The *normal* rate, which had the greatest weight in the weighting structure for November (62.8%), decreased by 3.2%.

The Rural Tourism Accommodation Price Index (RTAPI) registered a 1.1% increase in November. The *weekend* rate, which accounted for 82.6% of the total weight, increased by 1.4%.



## Evolution of travellers and overnight stays in all Spanish collective tourist accommodation

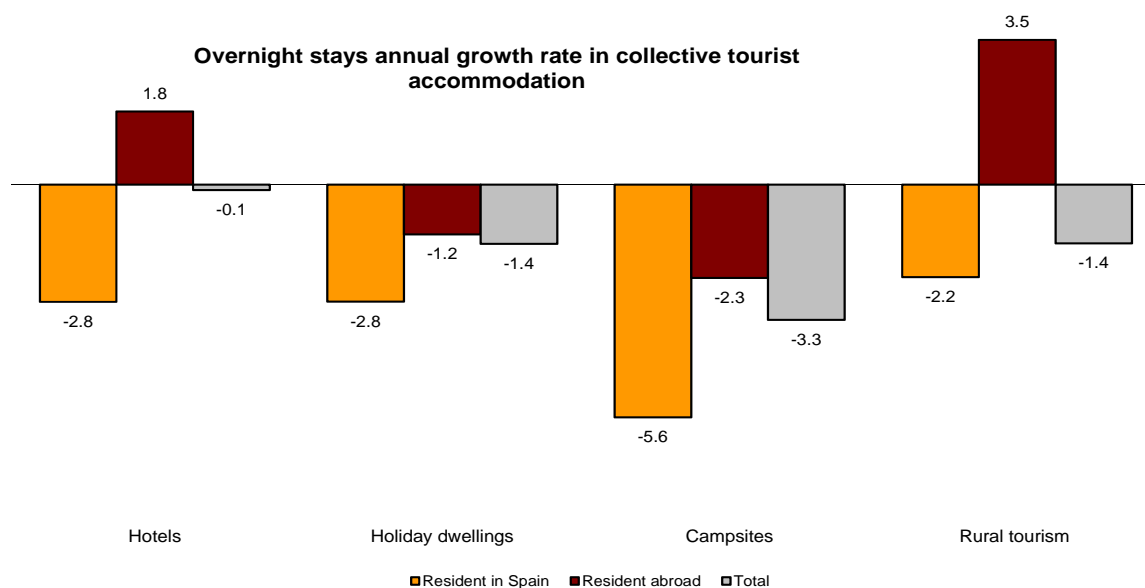
In November, overnight stays in Spanish collective tourist accommodation (hotels<sup>1</sup>, holiday dwellings, campsites and rural tourism accommodation) registered a 0.5% decrease in its annual rate. Overnight stays of residents decreased by 2.9%, while of non-residents increased by 0.8%.

The average stay decreased 0.7% as compared to the same month of the previous year, standing at 3.4 overnight stays per traveller.

Travellers and overnight stays in collective tourist accommodation were:

November 2014	Holiday dwellings	Campsites	Rural T.	Non-hotel	Hotels	Total
<b>Travellers</b>	505,334	138,076	187,427	830,837	5,120,445	5,951,282
Residents	133,822	94,020	173,597	401,439	2,948,663	3,350,102
Non-residents	371,512	44,056	13,830	429,398	2,171,782	2,601,180
<b>Overnight stays</b>	3,693,196	835,166	409,053	4,937,415	15,067,703	20,005,118
Residents	508,976	246,058	347,993	1,103,027	6,029,249	7,132,276
Non-residents	3,184,220	589,108	61,060	3,834,388	9,038,454	12,872,842

Of the total overnight stays in collective tourist accommodation, 75% accounted for hotels, and 25% did so for non-hotel tourist accommodation.



The main countries of origin in overall regulated tourist accommodation were the United Kingdom (with 24.9% of the total number of non-resident overnight stays), Germany (22.5%) and France (5.1%).

Canarias was the preferred destination, with more than 7.8 million overnight stays (2.6% below than that registered in November 2013), followed by Andalucía, with over 2.6 million overnight stays (5.5% more), and Cataluña, with over 2.3 million (2.6% less).

<sup>1</sup> The press release corresponding to Hotel Tourism Short-Term Trends was published on 22 December.

## Tourist Accommodation Occupancy Survey (Holiday Dwellings)

November 2014 Provisional data

### 1. Travellers, overnight stays and average stay by Autonomous Cities and Communities

Autonomous Cities and Communities	Travellers			Overnight stays			Average stay
	Total	Residents in Spain	Residents abroad	Total	Residents in Spain	Residents abroad	
TOTAL	505,334	133,822	371,512	3,693,196	508,976	3,184,220	7.31
Andalucía	76,993	29,274	47,719	373,589	73,507	300,082	4.85
Aragón	5,598	5,056	542	16,993	13,195	3,797	3.04
Asturias, Principado de	1,257	1,211	46	3,950	3,478	471	3.14
Balears, Illes	5,129	1,418	3,711	33,079	4,761	28,318	6.45
Canarias	296,083	24,449	271,634	2,605,003	130,551	2,474,452	8.80
Cantabria	3,169	2,610	559	8,501	6,343	2,158	2.68
Castilla y León	6,932	6,685	247	17,838	16,997	841	2.57
Castilla - La Mancha	5,736	5,540	196	15,493	13,052	2,440	2.70
Cataluña	23,930	12,144	11,786	130,178	67,966	62,211	5.44
Comunitat Valenciana	40,498	16,243	24,255	307,458	74,246	233,212	7.59
Extremadura	2,334	2,259	75	4,789	4,646	143	2.05
Galicia	2,399	2,304	95	8,057	7,639	418	3.36
Madrid, Comunidad de	22,329	14,157	8,171	106,596	53,118	53,477	4.77
Murcia, Región de	4,502	2,809	1,692	32,858	15,713	17,144	7.30
Navarra, Comunidad Foral de	2,380	2,241	139	8,109	7,387	721	3.41
País Vasco	3,125	2,520	605	14,568	10,367	4,201	4.66
Rioja, La	2,940	2,901	39	6,138	6,008	131	2.09
Ceuta	-	-	-	-	-	-	-
Melilla	-	-	-	-	-	-	-
Annual rate	1.12	2.47	0.65	-1.43	-2.82	-1.20	-2.53
Cumulative annual rate	4.59	4.64	4.56	3.03	1.09	3.62	-1.50

### 2. Capacity, occupancy and number of staff by Autonomous Cities and Communities

Autonomous Cities and Communities	Capacity		Level of occupancy				Employed personnel
	Estimated bedplaces	Estimated Holiday dwelling	Per bedplaces	Per bedplaces at weekend	Per Holiday dwelling	Per Holiday dwelling at weekend	
TOTAL	355,480	96,867	34.58	36.25	57.62	59.28	20,216
Andalucía	54,199	13,946	22.89	25.47	38.43	41.01	3,441
Aragón	5,915	1,384	9.57	16.35	15.65	22.61	410
Asturias, Principado de	3,251	916	4.05	5.94	8.32	10.44	224
Balears, Illes	4,032	1,082	27.73	30.48	45.64	49.73	412
Canarias	159,373	49,058	54.46	54.47	81.16	81.21	10,155
Cantabria	2,794	772	10.14	14.10	17.19	22.55	158
Castilla y León	4,747	1,014	12.51	22.98	21.65	30.99	396
Castilla - La Mancha	4,590	1,159	11.24	23.69	16.22	30.25	386
Cataluña	20,296	5,014	21.48	24.26	34.64	37.56	858
Comunitat Valenciana	71,283	15,171	14.37	15.59	29.08	30.71	2,250
Extremadura	1,596	375	9.99	17.00	15.54	22.85	167
Galicia	2,922	804	9.17	11.45	22.29	24.25	176
Madrid, Comunidad de	7,581	3,148	46.67	53.08	63.29	68.49	478
Murcia, Región de	7,661	1,804	14.30	15.47	30.31	31.79	220
Navarra, Comunidad Foral de	1,642	323	16.44	23.42	32.73	38.05	249
País Vasco	2,385	617	21.76	30.12	49.10	58.02	130
Rioja, La	1,212	278	16.83	40.45	22.41	47.80	105
Ceuta	-	-	-	-	-	-	-
Melilla	-	-	-	-	-	-	-
Annual rate	-0.95	-2.52	-0.30	-1.54	-0.61	-0.88	10.68
Cumulative annual rate	-0.72	-1.88	3.67	4.60	4.51	5.26	5.40

### 3. Travellers, overnight stays, capacity, occupancy, total number of staff with greater number of overnight stays \*

Provinces	Travellers		Overnight stays			Capacity		Level of occupancy			Employed personnel
	Residents in Spain	Residents abroad	Residents in Spain	Residents abroad	Average stay	Estimated bed-places	Estimated holiday dwelling	Per bed-places	Per Holiday dwelling	Per Holiday dwelling at weekend	
Palmas, Las	14,159	178,019	78,075	1,625,556	8.86	104,455	32,019	54.44	83.04	82.93	6,234
St Cruz de Tenerife	10,290	93,615	52,476	848,896	8.67	54,918	17,040	54.49	77.66	78.02	3,921
Málaga	9,496	37,170	25,369	254,999	6.01	34,249	8,514	27.23	47.21	47.69	2,329
Alicante\Alacant	8,867	19,008	46,087	204,031	8.97	53,379	11,538	15.62	31.49	32.34	1,696
Barcelona	7,234	10,397	53,770	54,339	6.13	9,274	2,722	39.54	54.24	56.74	470
Sevilla	8,131	6,352	22,105	21,634	3.02	3,980	1,279	36.14	53.74	61.50	298
Valencia\València	5,265	4,911	17,894	21,933	3.91	9,761	2,046	13.58	28.30	33.43	424
Granada	4,393	2,309	10,533	11,075	3.22	3,759	1,057	19.10	26.96	35.25	326
Castellón\Castelló	2,110	336	10,265	7,249	7.16	8,143	1,587	7.17	12.55	15.38	129
Girona	2,875	1,114	7,514	5,689	3.31	7,748	1,612	5.68	11.07	14.71	263
Cádiz	1,397	845	3,370	5,224	3.83	2,685	745	10.61	14.17	17.22	179
Almería	856	578	2,984	5,156	5.68	4,681	1,178	5.80	9.60	10.45	82
Zaragoza	1,628	334	4,886	1,773	3.39	978	246	22.70	41.06	49.36	74
Tarragona	1,115	266	4,642	1,927	4.76	1,655	332	13.23	22.34	23.81	63
Teruel	1,938	146	4,705	1,818	3.13	1,842	447	11.79	17.27	25.50	118

### 4. Travellers, overnight stays, capacity, occupancy, total number of staff from tourist areas with greater number of overnight stays

Tourist Areas	Travellers		Overnight stays			Capacity		Level of occupancy			Employed personnel
	Residents in Spain	Residents abroad	Residents in Spain	Residents abroad	Average stay	Estimated bed-places	Estimated holiday dwelling	Per bed-places	Per Holiday dwelling	Per Holiday dwelling at weekend	
Isla de Gran Canaria	5,447	83,447	28,938	833,666	9.70	50,311	16,101	57.74	85.25	85.27	2,822
Isla de Tenerife	8,057	87,235	41,910	791,285	8.74	48,460	14,848	57.07	80.99	81.38	3,406
Isla de Lanzarote	5,877	69,510	32,469	556,052	7.81	37,107	10,688	52.64	83.23	82.71	2,483
Costa del Sol	7,556	37,020	22,132	254,747	6.21	32,936	8,196	27.96	48.48	48.85	2,214
Isla de Fuerteventura	2,836	25,062	16,668	235,839	9.05	17,038	5,230	48.82	76.07	76.38	930
Costa Blanca	8,605	18,911	45,116	201,972	8.98	52,136	11,258	15.80	31.91	32.79	1,639
Catalunya Central	1,773	60	35,057	16,110	27.91	2,927	1,012	58.27	57.23	59.08	63
Barcelona	4,593	9,955	14,320	34,750	3.37	4,200	1,090	38.85	66.47	70.47	340
Isla de la Palma	1,332	2,771	6,498	27,729	8.34	2,865	1,012	39.83	60.14	61.54	259
Isla de la Gomera	740	3,484	3,393	29,585	7.81	3,194	1,059	34.39	54.91	54.17	233

### 5. Travellers, overnight stays, capacity, occupancy, total number of staff from tourist sites with greater number at overnights stays

Tourist sites	Travellers		Overnight stays			Capacity		Level of occupancy			Employed personnel
	Residents in Spain	Residents abroad	Residents in Spain	Residents abroad	Average stay	Estimated bed-places	Estimated holiday dwelling	Per bed-places	Per Holiday dwelling	Per Holiday dwelling at weekend	
San Bartolomé de Tirajana	3,015	51,449	19,145	516,766	9.84	31,910	10,290	55.68	84.49	84.48	1,771
Arona	1,254	39,868	9,310	370,536	9.24	20,169	6,260	62.68	85.15	85.59	1,409
Mogán	2,131	31,095	9,191	310,581	9.62	17,047	5,233	62.37	88.47	88.53	937
Tias	3,073	38,541	15,716	296,318	7.50	18,439	5,844	56.03	82.18	81.95	1,060
Adeje	1,303	25,499	6,792	237,527	9.12	15,082	4,218	53.58	82.36	82.16	990
Teguise	2,583	19,192	15,118	154,437	7.79	11,308	3,066	49.79	86.50	85.43	767
Benidorm	3,141	12,177	18,782	121,044	9.13	19,338	4,585	24.10	45.41	46.40	805
Puerto de la Cruz	4,381	9,207	20,605	88,417	8.02	6,192	2,520	58.61	74.82	77.26	472
Madrid	14,238	8,232	51,460	52,256	4.62	6,969	2,898	49.36	66.19	71.85	437
Pájara	582	7,416	2,856	89,159	11.50	5,129	1,793	58.07	82.58	82.46	371

\* Provinces belonging to uniprovincial Autonomous Communities have not been included because they are reflected in previous tables.



## 6. Travellers and overnight stays by countries of residence

Countries	Travellers		Overnight stays	
	Total	%	Total	%
TOTAL	505,334	100.00	3,693,196	100.00
Residents in Spain	133,822	26.48	508,976	13.78
Residents abroad	371,512	73.52	3,184,220	86.22
Total residents abroad	371,512	100.00	3,184,220	100.00
Total residents in E.U (excluding Spain)	312,817	84.20	2,644,026	83.04
- Germany	52,425	14.11	544,673	17.11
- Austria	2,085	0.56	20,110	0.63
- Belgium	5,001	1.35	43,889	1.38
-Denmark	13,888	3.74	122,903	3.86
- Finland	20,388	5.49	179,130	5.63
- France	11,672	3.14	66,534	2.09
- Greece	171	0.05	1,029	0.03
- Ireland	12,878	3.47	86,179	2.71
- Italy	10,124	2.72	56,331	1.77
- Luxembourg	813	0.22	8,555	0.27
- Netherlands	17,569	4.73	164,793	5.18
- Poland	3,097	0.83	20,030	0.63
- Portugal	1,163	0.31	6,221	0.20
- United Kingdom	120,186	32.35	968,304	30.41
- Czech Republic	907	0.24	7,388	0.23
- Sweden	35,941	9.67	315,764	9.92
- Other EU countries	4,509	1.21	32,191	1.01
Norway	26,903	7.24	303,351	9.53
Russia	5,244	1.41	44,352	1.39
Switzerland	4,225	1.14	37,496	1.18
Other european countries	3,966	1.07	35,577	1.12
United States of America	4,688	1.26	27,667	0.87
Rest of America	4,723	1.27	40,066	1.26
African countries	2,372	0.64	12,857	0.40
Other countries	6,574	1.77	38,828	1.22

## Tourist Accommodation Occupancy Survey Campsite Occupancy Survey (COS)

November 2014

Provisional data

### 1. Travellers, overnight stays and average stay by category of establishment

Category	Travellers			Overnight stays			Average stay
	Total	Residents in Spain	Residents abroad	Total	Residents in Spain	Residents abroad	
TOTAL	138,076	94,020	44,056	835,166	246,058	589,108	6.05
Luxury and first-class	49,911	30,169	19,743	335,221	89,917	245,304	6.72
Second-class	73,209	51,432	21,777	464,629	129,244	335,385	6.35
Third-class	14,956	12,419	2,537	35,316	26,896	8,419	2.36
Annual rate	-0.34	-1.23	1.62	-3.26	-5.61	-2.25	-2.94
Cumulative annual rate	4.50	4.14	5.25	3.47	6.43	0.31	-0.99

### 2. Open establishments, capacity, occupancy and number of staff by category of establishments

Category	Estimated open establishments	Capacity		Occupied pitches	Occupancy rate per pitch	Weekend occupancy rate	Employed personnel
		Estimated bedplaces	Estimated pitches				
TOTAL	481	305,302	95,426	929,116	32.46	34.85	3,048
Luxury and first-class	135	128,782	39,225	362,919	30.84	32.47	1,364
Second-class	272	153,441	48,473	492,665	33.88	36.04	1,439
Third-class	74	23,079	7,728	73,532	31.72	38.10	245
Annual rate	0.66	2.46	2.57	0.92	-1.61	-1.63	-0.46
Cumulative annual rate	-1.19	-1.57	-1.38	2.23	3.72	3.90	0.34

### 3. Travellers, overnight stays and average stay by Autonomous Cities and Communities

Autonomous cities and communities	Travellers			Overnight stays			Average stay
	Total	Residents in Spain	Residents abroad	Total	Residents in Spain	Residents abroad	
TOTAL	138,076	94,020	44,056	835,166	246,058	589,108	6.05
Andalucía	22,767	10,753	12,014	145,375	34,848	110,527	6.39
Aragón	4,202	2,881	1,321	11,531	8,440	3,091	2.74
Asturias, Principado de	693	447	246	1,239	816	423	1.79
Balears, Illes	-	-	-	-	-	-	-
Canarias	2,193	1,576	617	7,153	2,225	4,928	3.26
Cantabria	1,901	1,901	-	4,333	4,301	32	2.28
Castilla y León	2,848	1,186	1,662	4,946	2,782	2,164	1.74
Castilla - La Mancha	1,608	1,406	202	3,337	2,644	693	2.07
Cataluña	49,486	43,135	6,351	118,362	91,026	27,336	2.39
Comunitat Valenciana	26,953	11,627	15,326	401,492	51,152	350,341	14.90
Extremadura	1,582	904	678	3,063	1,891	1,173	1.94
Galicia	578	382	196	929	696	233	1.61
Madrid, Comunidad de	8,787	7,705	1,082	23,290	20,956	2,334	2.65
Murcia, Región de	5,837	3,276	2,561	91,402	9,945	81,456	15.66
Navarra, Comunidad Foral de	2,474	1,964	510	6,511	4,344	2,168	2.63
País Vasco	2,165	1,316	849	5,060	3,454	1,606	2.34
Rioja, La	4,002	3,562	440	7,142	6,538	605	1.78
Ceuta	-	-	-	-	-	-	-
Melilla	-	-	-	-	-	-	-

#### 4. Open establishments, capacity, occupancy and number of staff by autonomous cities and communities

Autonomous cities and communities	Estimated open establishments	Capacity		Occupied pitches	Occupancy rate per pitch	Weekend occupancy rate	Employed personnel
		Estimated bedplaces	Estimated pitches				
TOTAL	481	305,302	95,426	929,116	32.46	34.85	3,048
Andalucía	102	62,588	19,985	124,740	20.81	21.60	644
Aragón	39	15,588	4,904	28,564	19.41	20.33	144
Asturias, Principado de	8	5,813	1,767	9,137	17.23	25.90	25
Balears, Illes	-	-	-	-	-	-	-
Canarias	5	3,524	1,318	6,654	16.83	17.20	24
Cantabria	10	6,322	1,940	29,777	51.15	49.84	35
Castilla y León	28	10,014	3,177	13,903	14.59	19.30	77
Castilla - La Mancha	15	5,019	1,439	11,624	26.93	31.60	41
Cataluña	87	69,626	20,509	199,836	32.48	38.69	599
Comunitat Valenciana	89	64,311	20,221	285,301	47.03	48.13	817
Extremadura	12	3,991	1,365	8,414	20.54	22.68	69
Galicia	18	6,276	2,200	3,722	5.64	3.70	74
Madrid, Comunidad de	19	17,385	5,820	81,604	46.74	45.03	165
Murcia, Región de	18	14,792	4,890	58,988	40.21	41.98	155
Navarra, Comunidad Foral de	11	6,661	1,728	15,145	29.22	29.60	69
País Vasco	12	5,826	1,841	12,197	22.08	26.74	54
Rioja, La	7	7,566	2,320	39,511	56.76	59.47	55
Ceuta	-	-	-	-	-	-	-
Melilla	-	-	-	-	-	-	-

#### 5. Travellers and overnight stays, average stay, capacity, occupancy and number of staff by provinces with the greatest number of overnight stays\*

Provinces	Travellers		Overnight stays		Average stay	Estimated open establishments	Estimated pitches	Occupancy rate per pitch	Employed personnel
	Residents in Spain	Residents abroad	Residents in Spain	Residents abroad					
	Alicante\Alacant	2,659	6,747	25,174					
Castellón\Castelló	2,502	5,988	11,165	75,648	10.23	30	5,715	34.80	230
Málaga	1,653	3,783	10,816	60,048	13.04	27	4,617	33.06	170
Barcelona	21,458	2,410	44,429	13,903	2.44	24	6,353	40.01	209
Valencia\València	6,466	2,591	14,812	29,352	4.88	25	5,373	39.56	183
Almería	705	2,181	5,866	24,657	10.58	17	2,468	23.28	95
Girona	10,988	2,926	20,050	10,197	2.17	30	6,632	23.92	216
Tarragona	4,408	947	14,070	2,953	3.18	19	4,707	24.19	110
Lleida	6,281	67	12,478	283	2.01	15	2,818	49.48	65
Granada	1,079	1,924	2,438	9,985	4.14	19	2,310	17.77	93
Cádiz	715	1,815	2,134	10,165	4.86	12	3,082	16.49	105
Huelva	3,794	481	8,037	2,506	2.47	11	4,751	16.41	79
Huesca	1,964	427	4,395	743	2.15	25	3,330	23.46	98
Zaragoza	307	764	2,683	1,749	4.14	5	580	20.76	26
Sevilla	1,033	1,022	1,731	1,716	1.68	5	800	15.85	54

\* Provinces belonging to uniprovincial Autonomous Communities have not been included because they are reflected in previous tables.

## 6. Travellers, overnight stays, average stay, open establishments, capacity, occupancy and number of staff from tourist areas with the greatest number of overnight stays

Tourist areas	Travellers		Overnight stays		Average stay	Estimated open establishments	Estimated pitches	Occupancy rate per pitch	Employed personnel
	Residents in Spain	Residents abroad	Residents in Spain	Residents abroad					
Costa Blanca	1,786	5,387	13,499	216,207	30.00	26	6,940	65.55	343
Costa de Castellón	1,304	5,800	9,137	74,726	11.80	26	5,390	34.49	219
Costa Cálida	1,050	1,912	4,306	74,747	26.69	9	3,789	42.29	110
Costa del Sol	713	3,005	9,467	56,727	17.80	13	3,325	41.64	131
Costa Barcelona	11,621	2,348	23,536	13,729	2.67	7	4,381	35.01	130
Pirineus	17,953	142	33,602	256	1.87	32	4,814	50.75	139
Costa Valencia	2,618	1,535	7,597	25,470	7.96	11	3,468	40.37	116
Costa de Almería	542	2,088	5,577	22,624	10.72	12	2,039	23.56	72
Costa Brava	5,238	2,830	10,412	10,005	2.53	18	5,113	17.27	159
Costa Daurada	4,062	574	12,707	1,728	3.11	13	3,793	27.20	82
Costa de la Luz de Cádiz	472	1,417	1,468	9,128	5.61	9	2,517	15.67	87
Catalunya Central	3,601	62	8,656	173	2.41	9	1,070	47.08	51
Costa de la Luz de Huelva	2,563	395	6,382	2,000	2.83	6	4,058	13.74	57
Costa Tropical	242	643	1,147	5,899	7.96	6	1,035	17.63	37
Pirineo Aragonés	1,802	366	4,224	674	2.26	20	3,079	21.75	90

## 7. Travellers, overnight stays, average stay, open establishments, capacity, occupancy and number of staff from tourist sites with the greatest number at overnights stays

Tourist sites	Travellers		Overnight stays		Average stay	Estimated open establishments	Estimated pitches	Occupancy rate per pitch	Employed personnel
	Residents in Spain	Residents abroad	Residents in Spain	Residents abroad					
Benidorm	211	1,740	5,254	126,243	30.00	9	3,758	73.38	119
Cartagena	174	1,153	1,362	45,728	30.00	3	2,528	32.36	63
Marbella	120	1,065	6,735	26,541	28.08	3	1,310	42.31	58
Mazarrón	153	582	1,513	24,041	30.00	3	874	61.33	32
Peníscola/Peñíscola	460	2,502	2,012	21,429	7.91	8	1,287	32.23	54
Oliva	113	1,041	1,382	19,243	17.87	5	1,248	35.91	67
Cabanés	81	884	311	19,246	20.27	3	964	37.96	51
Vélez-Málaga	256	767	1,324	17,724	18.62	4	801	46.06	39
Benicasim/Benicàssim	132	812	684	15,371	17.01	3	833	40.82	37
Campello (El)	182	358	2,749	5,587	15.44	3	301	52.57	16
Motril	227	427	696	4,735	8.30	3	586	25.28	25
Fortuna	241	446	1,011	4,174	7.55	3	199	46.82	5

## 8. Travellers and overnight stays by countries of residence

Countries	Travellers		Overnight stays	
	Total	%	Total	%
TOTAL	138,076	100.00	835,166	100.00
Residents in Spain	94,020	68.09	246,058	29.46
Residents abroad	44,056	31.91	589,108	70.54
TOTAL residents abroad	44,056	100.00	589,108	100.00
TOTAL residents in E.U. (excluding Spain)	40,659	92.29	563,814	95.71
- Germany	10,436	23.69	151,492	25.72
- Austria	530	1.20	6,201	1.05
- Belgium	1,714	3.89	26,967	4.58
- Denmark	340	0.77	7,314	1.24
- Finland	756	1.72	8,824	1.50
- France	7,242	16.44	44,363	7.53
- Greece	19	0.04	249	0.04
- Ireland	463	1.05	4,316	0.73
- Italy	683	1.55	2,915	0.49
- Luxembourg	88	0.20	1,494	0.25
- Netherlands	5,905	13.40	90,538	15.37
- Poland	350	0.79	775	0.13
- Portugal	296	0.67	683	0.12
- United Kingdom	9,627	21.85	191,081	32.44
- Czech Republic	112	0.25	261	0.04
- Sweden	1,604	3.64	24,342	4.13
- Other EU countries	496	1.13	2,001	0.34
Norway	403	0.91	6,629	1.13
Russia	48	0.11	257	0.04
Switzerland	1,605	3.64	12,790	2.17
Other European countries	456	1.04	1,579	0.27
United States of America	98	0.22	397	0.07
Rest of America	341	0.77	1,202	0.20
African countries	10	0.02	74	0.01
Other countries	435	0.99	2,367	0.40

\* Non-significant data

**Tourist accommodation occupancy survey  
(Rural tourist accommodation)**

**November 2014**

Provisional data

**1. Number of travellers, overnight stays and average stay by Autonomous City and Community**

Autonomous Communities	Number of travellers			Number of overnight stays			Average stay
	Total	Residents In Spain	Residents abroad	Total	Residents In Spain	Residents abroad	
<b>TOTAL</b>	187,427	173,597	13,830	409,053	347,993	61,060	2.18
Andalucía	14,475	12,507	1,968	41,205	30,537	10,668	2.85
Aragón	6,284	6,001	284	14,154	13,479	675	2.25
Asturias, Principado de	7,648	7,574	74	17,455	17,296	159	2.28
Balears, Illes	3,301	849	2,452	11,277	1,637	9,640	3.42
Canarias	6,647	1,751	4,895	34,528	5,208	29,320	5.19
Cantabria	7,994	7,798	196	14,826	14,461	365	1.85
Castilla y León	50,176	49,021	1,155	96,910	94,718	2,193	1.93
Castilla-La Mancha	16,684	16,481	203	35,769	35,278	491	2.14
Cataluña	24,143	23,246	897	48,531	46,015	2,515	2.01
Comunitat Valenciana	7,677	7,430	246	14,623	13,692	932	1.90
Extremadura	9,060	8,778	282	17,397	16,357	1,040	1.92
Galicia	6,718	6,441	277	10,180	9,705	475	1.52
Madrid, Comunidad de	7,577	7,465	112	12,103	11,962	141	1.60
Murcia, Región de	2,378	2,239	139	4,581	3,881	700	1.93
Navarra, Comunidad Foral de	8,469	8,235	234	17,013	16,480	533	2.01
País Vasco	6,103	5,703	400	13,347	12,170	1,177	2.19
Rioja, La	2,093	2,077	16	5,154	5,117	37	2.46
Ceuta	-	-	-	-	-	-	-
Melilla	-	-	-	-	-	-	-
Annual rate	-1.83	-2.74	11.27	-1.42	-2.23	3.49	0.42
Cumulative annual rate	11.21	10.40	15.22	10.40	9.88	11.89	-0.73

**2. Open rural establishments, bed-places, occupancy rates and employed personnel by Autonomous City and Community**

Autonomous Communities	Estimated open rural establishments	Estimated bed-places	Occupancy rate			Employed personnel
			Of bed-places	Of bed-places at weekend	Of bedrooms	
<b>TOTAL</b>	14,847	134,990	10.08	24.10	12.96	20,375
Andalucía	1,507	12,963	10.59	22.12	15.47	2,181
Aragón	1,159	8,983	5.24	13.43	6.75	1,240
Asturias, Principado de	1,210	11,109	5.24	10.47	7.03	1,489
Balears, Illes	97	1,837	20.46	24.14	23.32	463
Canarias	618	3,834	29.96	30.68	43.75	885
Cantabria	287	4,797	10.26	25.21	11.73	478
Castilla y León	3,302	28,376	11.35	29.74	13.77	4,587
Castilla-La Mancha	1,410	12,132	9.82	26.89	12.79	1,834
Cataluña	1,920	15,576	10.37	30.76	12.22	2,506
Comunitat Valenciana	907	8,774	5.55	14.47	9.14	1,444
Extremadura	548	6,547	8.85	23.25	13.65	803
Galicia	496	6,171	5.49	12.20	6.56	679
Madrid, Comunidad de	252	3,637	11.06	29.74	14.25	435
Murcia, Región de	117	1,715	8.90	22.15	11.78	177
Navarra, Comunidad Foral de	623	4,509	12.52	35.82	14.01	730
País Vasco	284	3,037	14.58	30.58	17.66	321
Rioja, La	110	995	17.09	42.07	17.97	123
Ceuta	-	-	-	-	-	-
Melilla	-	-	-	-	-	-
Annual rate	-0.71	-1.48	0.18	4.73	3.44	-0.57
Cumulative annual rate	0.69	0.78	9.72	10.19	11.34	1.93

### 3. Number of travellers, overnight stays and average stay in Provinces with the greatest number of overnight stays<sup>1</sup>

Provinces	Number of travellers			Number of overnight stays			Average stay
	Total	Residents In Spain	Residents abroad	Total	Residents In Spain	Residents abroad	
Santa Cruz de Tenerife	4,608	1,121	3,487	25,827	3,700	22,128	5.60
Girona	10,360	10,045	315	20,004	19,286	718	1.93
Segovia	9,576	9,372	204	18,991	18,738	252	1.98
Ávila	8,827	8,695	132	18,275	18,036	239	2.07
Barcelona	7,244	6,952	293	15,575	15,051	524	2.15
Cáceres	7,687	7,440	247	14,955	13,986	969	1.95
Burgos	6,739	6,665	74	12,439	12,288	151	1.85
Málaga	2,009	1,537	472	12,376	7,209	5,167	6.16
Salamanca	6,167	6,015	151	11,019	10,724	295	1.79
Soria	5,168	5,163	4	10,920	10,915	4	2.11
Cuenca	4,218	4,217	1	9,671	9,670	1	2.29
León	5,295	5,011	284	9,287	8,912	375	1.75
Lleida	3,986	3,861	125	8,820	7,851	969	2.21
Albacete	4,323	4,321	2	8,803	8,801	2	2.04
Palmas, Las	2,038	630	1,408	8,701	1,509	7,192	4.27

### 4. Open rural establishments, bed-places, occupancy rates and employed personnel in Provinces with the highest number of overnight stays<sup>1</sup>

Provinces	Estimated open rural establishments	Estimated bed-places	Occupancy rate			Employed personnel
			Of bed-places	Of bed-places at weekend	Of bedrooms	
Santa Cruz de Tenerife	495	2,871	29.92	30.00	43.35	698
Girona	632	5,213	12.77	38.99	14.84	916
Segovia	375	3,393	18.55	48.16	21.09	541
Ávila	783	5,479	11.11	29.35	15.30	1,179
Barcelona	488	4,265	12.16	36.74	15.18	623
Cáceres	457	5,466	9.11	23.98	14.56	657
Burgos	355	3,591	11.50	34.82	12.83	415
Málaga	577	3,699	11.15	17.32	19.78	701
Salamanca	491	3,912	9.37	22.03	11.57	655
Soria	301	2,697	13.43	38.45	14.59	371
Cuenca	289	2,882	11.18	29.88	14.13	386
León	460	4,006	7.72	18.48	9.12	646
Lleida	562	4,010	7.32	19.61	8.21	700
Albacete	570	3,520	8.33	24.52	9.71	756
Palmas, Las	123	963	30.06	32.73	45.01	187

<sup>1</sup> Provinces belonging to uniprovincial Autonomous Communities have not been included because they are reflected in previous tables.

## 5. Number of travellers, overnight stays, average stay, capacity and occupancy rates in areas with the highest number of overnight stays

Areas	Number of travellers		Number of overnight stays		Average stay	Capacity		Occupancy rate		
	Residents In Spain	Residents abroad	Residents In Spain	Residents abroad		Estimated open rural establishments	Estimated bed-places	Of bed-places	Of bed-places at weekend	Of bedrooms
Pirineus	10,089	146	20,616	1,222	2.13	791	5,934	12.25	36.65	14.12
Pirineo Navarro	7,793	196	15,679	465	2.02	567	4,091	13.10	37.31	14.91
Isla de Tenerife	854	2,368	1,490	11,845	4.14	114	1,172	37.78	40.30	52.08
Isla de Mallorca	441	2,329	1,029	9,350	3.75	84	1,551	22.31	25.80	25.62
P.Nacional Teide	726	1,773	1,189	8,686	3.95	78	864	38.06	40.23	52.43
Costa Brava	4,657	169	8,975	319	1.93	371	3,253	9.50	28.32	11.28
Isla de La Palma	157	737	1,608	7,234	9.89	262	1,095	26.92	24.69	40.69
Catalunya Central	3,850	134	8,208	206	2.11	290	2,490	11.25	32.67	14.04
Pirineo Aragonés	2,192	51	5,335	99	2.42	563	4,168	4.34	11.66	4.87
Isla Gran Canaria	484	897	1,088	4,240	3.86	96	633	27.97	29.61	45.59
P.Nacional Picos de Europa	2,191	23	5,085	52	2.32	220	2,141	7.99	14.09	9.83
P.Natural Sierra de Aracena y Picos de Aroche	2,349	128	4,362	344	1.90	120	836	18.74	50.08	24.06
P.Nacional Taburiente	115	425	845	3,817	8.64	153	660	23.55	23.97	34.01
P.Natural de la Zona Volcánica	1,928	74	4,061	130	2.09	80	589	23.69	73.11	27.43
Pirineo Vasco	1,432	65	3,502	275	2.52	92	943	13.29	27.53	15.52

## 6. Number of travellers, overnight stays, average stay, capacity, occupancy rates and employed personnel per rural house by Autonomous City and Community<sup>2</sup>

Autonomous Communities	Number of travellers		Number of overnight stays		Average stay	Capacity		Occupancy rate		Employed personnel
	Residents In Spain	Residents abroad	Residents In Spain	Residents abroad		Estimated open rural establish.	Estimated bed-places	Of bed-places	Of bed-places at weekends	
TOTAL	121,668	7,935	257,255	38,659	2.28	12,713	99,950	9.85	24.61	16,328
Andalucía	12,507	1,968	30,537	10,668	2.85	1,507	12,963	10.59	22.12	2,181
Aragón	5,003	249	10,769	603	2.17	887	6,745	5.61	14.87	948
Asturias, Principado de	2,530	30	6,856	61	2.70	800	5,085	4.53	10.96	922
Balears, Illes	511	1,012	952	2,672	2.38	37	517	23.34	26.29	84
Canarias	691	2,311	3,482	17,826	7.10	589	3,006	23.62	24.07	737
Cantabria	2,378	16	4,478	33	1.88	130	1,887	7.95	20.51	185
Castilla y León	29,816	278	63,434	820	2.14	2,861	19,432	10.99	29.39	3,546
Castilla-La Mancha	15,725	200	33,497	487	2.13	1,384	11,609	9.75	27.25	1,790
Cataluña	23,246	897	46,015	2,515	2.01	1,920	15,576	10.37	30.76	2,506
Comunitat Valenciana	5,431	198	10,769	517	2.00	870	6,822	5.51	14.00	1,337
Extremadura	4,124	113	7,641	436	1.91	339	3,252	8.26	24.25	438
Galicia	4,379	174	6,707	299	1.54	361	4,269	5.46	12.29	450
Madrid, Comunidad de	1,136	-	2,425	-	2.13	71	690	11.68	33.17	84
Murcia, Región de	1,391	48	2,783	578	2.34	106	1,400	8.00	22.21	135
Navarra, Comunidad Foral de	8,235	234	16,480	533	2.01	623	4,509	12.52	35.82	730
País Vasco	2,487	191	5,315	574	2.20	119	1,193	16.36	35.11	132
Rioja, La	2,077	16	5,117	37	2.46	110	995	17.09	42.07	123
Ceuta	-	-	-	-	-	-	-	-	-	-
Melilla	-	-	-	-	-	-	-	-	-	-

<sup>2</sup> To facilitate the comparability between data from different Autonomous Communities (and because of the different regulation and different characteristics), a group called rural house has been created, with those establishments with similar typology (location, capacity, etc...). The variables included in the previous table have been estimated with that type of establishments.



## 7. Travellers and overnight stays by country of residence

Results by countries	Travellers		Overnight stays	
	Total	%	Total	%
TOTAL	187,427	100.00	409,053	100.00
Residents Spain	173,597	92.62	347,993	85.07
Residents abroad	13,830	7.38	61,060	14.93
Total Residents abroad	13,830	100.00	61,060	100.00
Total Residents in EU (excluding Spain)	11,540	83.44	54,381	89.06
- Germany	4,664	33.72	30,169	49.41
- Belgium	360	2.60	1,135	1.86
- France	2,004	14.49	5,283	8.65
- Italy	620	4.48	1,917	3.14
- Netherlands	933	6.74	4,449	7.29
- Portugal	288	2.08	910	1.49
- United Kingdom	1,807	13.06	6,185	10.13
Switzerland	447	3.24	1,880	3.08
Other European countries	1,374	9.93	5,625	9.21
United States of America	518	3.75	1,560	2.56
Other countries	815	5.89	1,946	3.19

## HOLIDAY DWELLING PRICE INDEX (HDPI)

November 2014

Provisional data

### National general index and breakdown by rates

	Index	Annual variation rate
TOTAL	110.50	3.55
Normal	108.00	2.10
Weekend	103.72	1.58
Tour-operators and travel agencies	112.90	4.41

### National general index and breakdown by modalities

	Index	Annual variation rate
TOTAL	110.50	3.55
Studio	105.60	4.11
Dwellings 2/4 bedplaces	109.93	3.64
Dwellings 4/6 bedplaces	122.03	2.45

**Tourist Campsite Price Index (TCSPI). 2002 Base  
November 2014**

Provisional data

**National general index and breakdown by rates**

	Index	Annual variation rate
TOTAL	136.97	-1.41
Normal rate	128.42	-3.23
Special rate for stays up to one month	130.55	1.40
Special rate for stays longer than one month	146.89	1.63

**National general index and breakdown by categories**

	Index	Annual variation rate
TOTAL	136.97	-1.41
Luxury and first	148.22	-2.59
Second	130.90	-0.76
Third	134.74	2.04

## Rural Tourism Accommodation Price Index (RTAPI)

November 2014

Provisional data

### General Autonomous Cities and Communities and national indices

	Index	Annual variation rate
<b>TOTAL</b>	<b>126.25</b>	<b>1.14</b>
Andalucía	128.36	4.44
Aragón	145.36	3.44
Asturias, Principado de	118.49	-5.47
Balears, Illes	113.11	-2.25
Canarias	100.12	-4.44
Cantabria	125.80	4.22
Castilla y León	122.21	-0.79
Castilla - La Mancha	114.62	2.29
Cataluña	137.73	2.86
Comunitat Valenciana	120.46	-1.81
Extremadura	112.36	2.69
Galicia	121.46	4.65
Madrid, Comunidad de	142.22	4.49
Murcia, Región de	134.52	-5.20
Navarra, Comunidad Foral de	159.69	-1.97
País Vasco	125.14	2.33
Rioja, La	138.47	8.73
Ceuta	-	-
Melilla	-	-

### National general index and breakdown by rates

	Index	Annual variation rate
<b>TOTAL</b>	<b>126.25</b>	<b>1.14</b>
Normal	121.47	-0.29
Weekend	131.14	1.44

### National general index and breakdown by rent modality

	Index	Annual variation rate
<b>TOTAL</b>	<b>126.25</b>	<b>1.14</b>
Shared use (in case of per room rent modality)	112.42	-1.25
Full use (rent of entire dwelling)	132.33	1.94