

29 December 2015

Non-Hotel Tourist Accommodation Occupancy Survey
November 2015. *Provisional data*

**Overnight stays in non-hotel tourist accommodation increase 6.9%
in November as compared to the same month of 2014**

Overnight stays in non-hotel tourist accommodation (holiday dwellings, tourist campsites, rural tourism accommodation and youth hostels) exceeded 5.3 million in November, that is, 6.9% more than in the same month of 2014. Overnight stays by resident travellers increased by 8.1% and those of non-residents did so by 6.5%.

The average stay stood at 5.7 overnight stays per traveller.

During the first 11 months of 2015, overnight stays increased by 4.5% as compared with the same period of the previous year.

Travellers and overnight stays in collective non-hotel tourist accommodation during the month of November were:

November 2015	Travellers	Overnight stays
Residents in Spain	464,992	1,258,053
EU (not including Spain)	398,802	3,480,500
Rest of the world	78,589	610,249
TOTAL	942,383	5,348,802

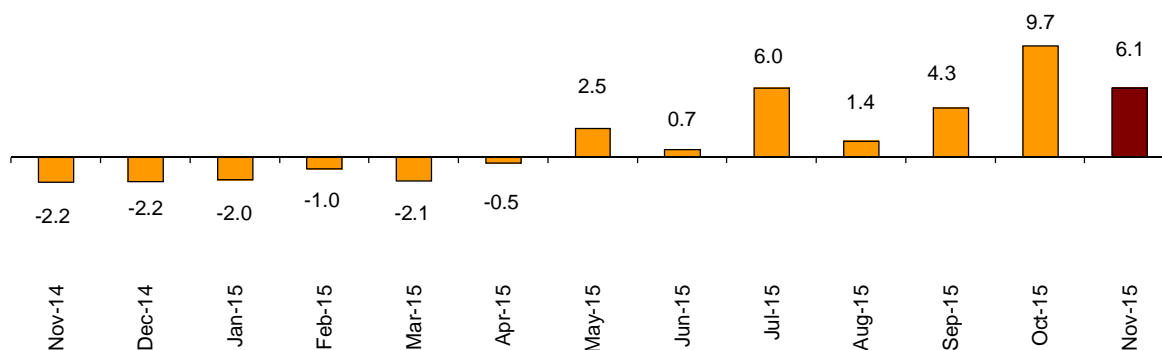
Holiday Dwellings

Overnight stays in holiday dwellings increased 6.1% in November. Those of residents increased by 9.5% and those of non-residents did so by 5.5%.

The average stay decreased 3.0% as compared with November 2014, and stood at 7.0 overnight stays per traveller.

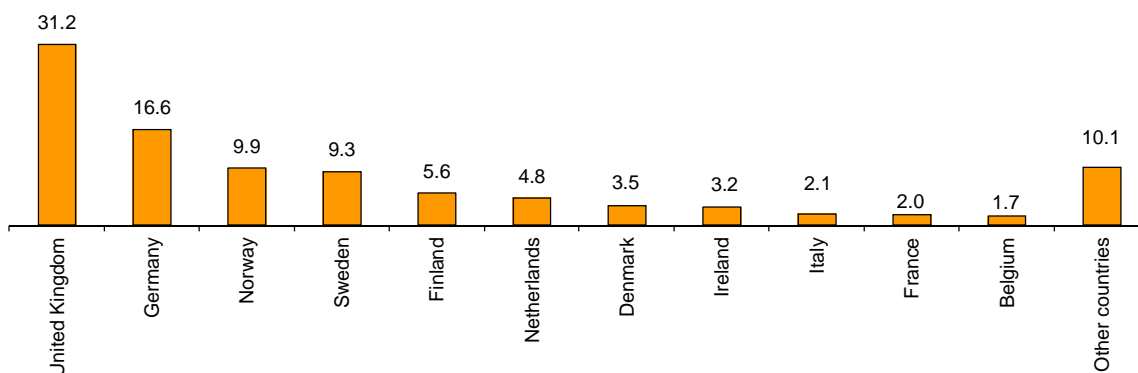
In November, 35.4% of the bedplaces available for holiday dwellings were occupied, 4.4% more than in the same month of 2014. The weekend occupancy rate by bedplaces stood at 38.0%, with an increase of 6.5%.

Overnight stays annual growth rate in holiday dwellings in %



Non-resident overnight stays in holiday dwellings represented 85.8% of the total. The United Kingdom was the main country of origin, with more than one million overnight stays, that is, 8.6% more than in November 2014. The following country of origin was Germany, with 552,896 overnight stays, that is, 1.3% more.

Distribution of overnight stays of residents abroad of the 11 main countries by origin



Canarias was the preferred holiday dwelling destination, with more than 2.6 million overnight stays, 2.0% more than in November 2014. This Community also registered the highest occupancy rate, with 83.8% of the holiday dwellings offered.

By tourist areas, the island of Gran Canaria was the preferred destination, with 914,332 overnight stays and with 88.2% of the holiday dwellings offered.

The tourist sites with the greatest number of overnight stays in November were San Bartolomé de Tirajana, Arona and Mogán.

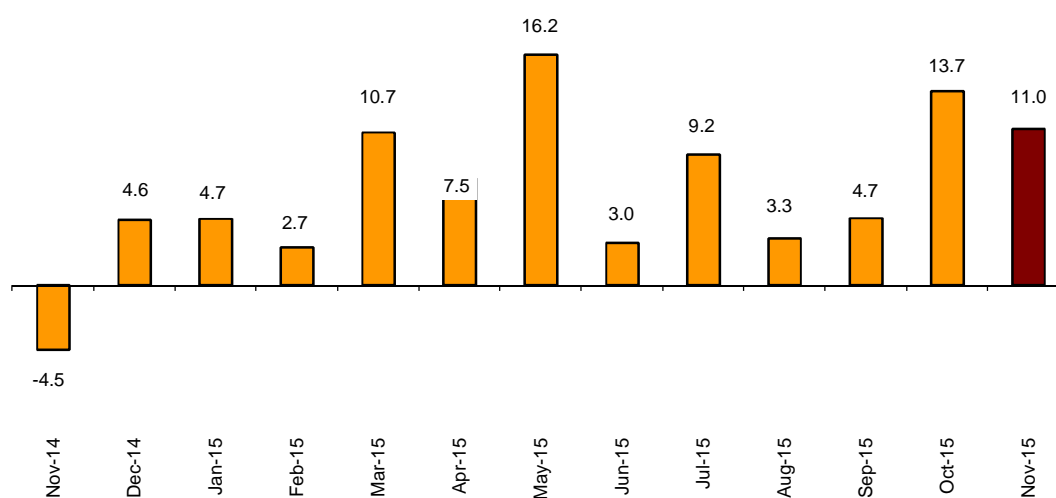
Tourist campsites

Overnight stays at tourist campsites registered an annual increase of 11.0% in November as compared to the same month of the previous year. Overnight stays by resident travellers increased by 9.8% and those of non-resident travellers did so by 11.5%.

In November, 33.2% of the offered pitches were occupied, that is, 1.7% more. The weekend occupancy rate by pitch reached 34.0%, with a 1.5% annual increase.

71.1% of the overnight stays at tourist campsites were by non-residents. United Kingdom was the main country of origin, with 35.0% of the overnight stays by non-residents, 13.1% more than in November 2014.

Overnight stays annual growth rate in campsites in %



Comunidad Valenciana was the preferred destination regarding tourist campsites, with more than 440,737 overnight stays, 12.1% more than in November 2014.

La Rioja was the Autonomous Community with the highest occupancy rate on tourist campsites, with 56.5% of the pitches offered.

By tourist areas, Costa Blanca was the preferred destination, with 261,680 overnight stays and an occupancy rate of 70.0% of the pitches offered.

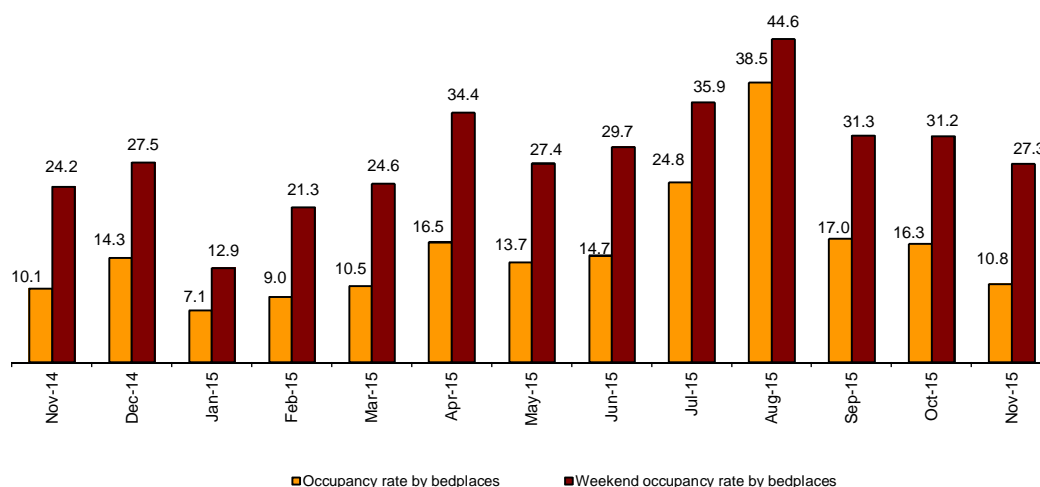
The tourist sites with the highest number of overnight stays were Benidorm, Cartagena and Marbella.

Rural Tourism Accommodation

Overnight stays in rural tourism accommodation presented an annual increase of 8.8% in November. Residents' overnight stays increased by 7.1% and those of non-residents did so by 18.6%.

Regarding rural tourism accommodation, 10.8% of the bedplaces were occupied, that is, a 6.2% increase as compared to November 2014. The weekend occupancy rate stood at 27.3%, with a 12.9% increase.

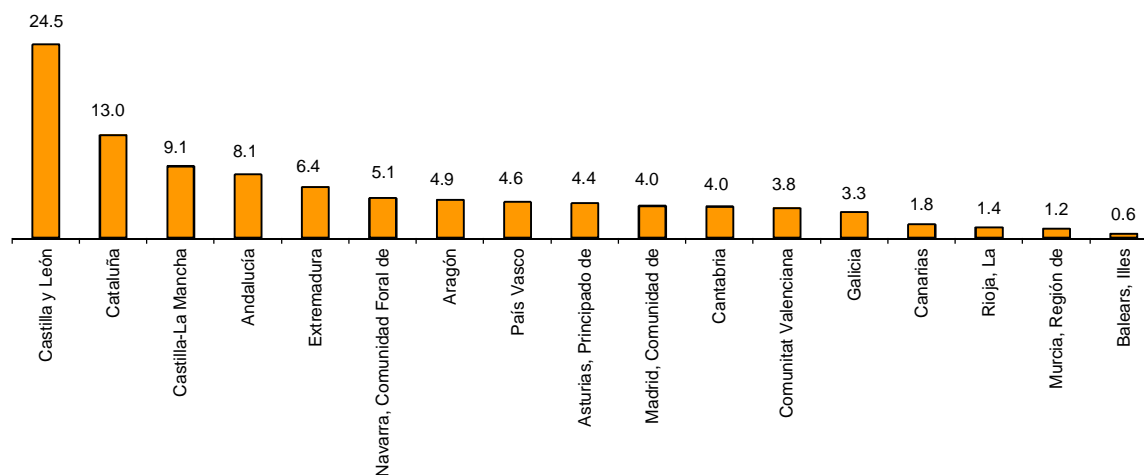
Occupancy rate by bedplaces and bedplaces on weekends



By Autonomous Community, Castilla y León was the preferred destination, with 95,024 overnight stays, 2.7% less than in November 2014. Canarias reached the highest occupancy rate, with 31.5% of the bedplaces offered.

By tourist area, Pirineus was the main destination, with 20,346 overnight stays. Parque Nacional del Teide reached the highest occupancy rate, 39.1% of the bedplaces offered.

Distribution of overnight stays of traveller residents by autonomous community of destination in %



Youth Hostels

Overnight stays in hostels registered an annual decrease of 3.9% in November. Overnight stays by resident travellers decreased by 2.8% and those of non-resident travellers did so by 6.0%.

15.4% of the offered bedplaces were occupied, 0.6% less than in November 2014. The weekend occupancy rate by bedplaces reached 27.8%, with a 11.5% increase.

By Autonomous Community, Cataluña was the preferred destination, with 36,472 overnight stays, 9.3% more than in November 2014. Comunidad de Madrid reached the highest occupancy rate with 35.5% of bedplaces offered.

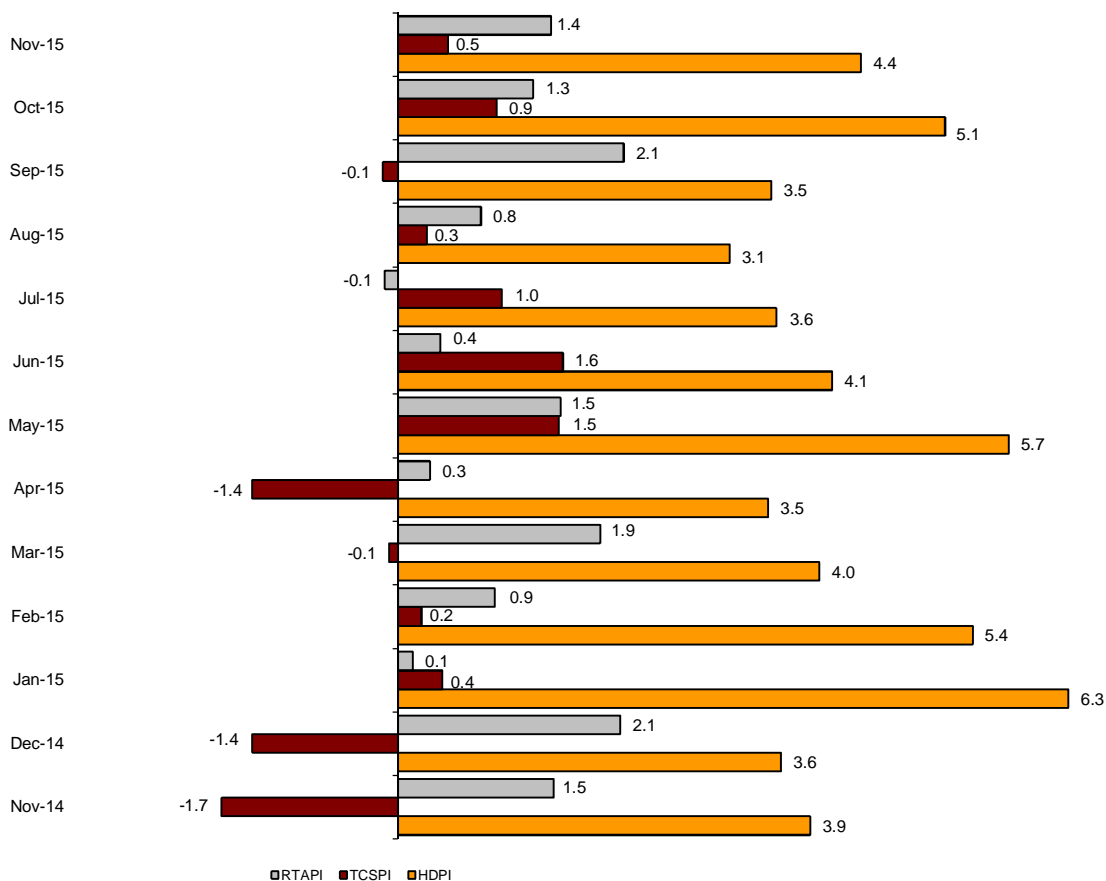
Price Indices

The Holiday Dwelling Price Index (HDPI) increased 4.4%, as compared to November 2014. The *tour operators and travel agencies* rate, which carried the greatest weight in the weighting structure for this month (57.8%), increased by 6.1%.

The Tourist Campsite Price Index (TCPI) increased by 0.5% in the annual rate. The *bungalow* rate, which had the greatest weight in the weighting structure for November (38.2%), increased by 1.0% as compared with the same month of 2014.

The Rural Tourism Accommodation Price Index (RTAPI) registered a 1.4% increase in November. The *weekend* rate, which accounted for 80.2% of the total weight, increased by 1.5% in the annual rate.

Price Indices. Annual variation rates



Evolution of travellers and overnight stays in all Spanish collective tourist accommodation

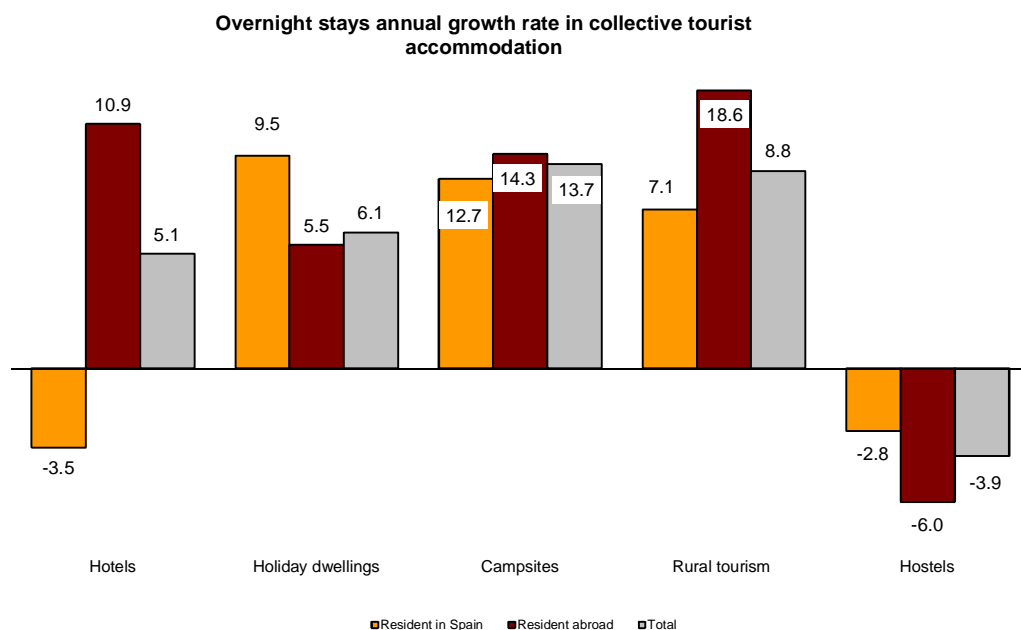
In November, overnight stays in Spanish collective tourist accommodation (hotels¹, holiday dwellings, tourist campsites, rural tourism accommodation and youth hostels) registered an 5.6% increase in the annual rate. Overnight stays by residents decreased by 1.7%, while those of non-residents increased by 9.6%.

The average stay decreased 1.8%, standing at 3.3 overnight stays per traveller.

Travellers and overnight stays in collective tourist accommodation were:

November 2015	Holiday dwelling	Campsites	Rural T.	Non-hotel	Hotels	Hotels	Total
Travellers	552,388	139,486	202,162	48,346	942,382	5,530,654	6,473,036
Residents	152,377	92,444	185,881	34,290	464,992	3,061,499	3,526,491
Non-residents	400,011	47,042	16,281	14,057	477,391	2,469,155	2,946,546
Overnight stays	3,887,716	914,615	449,760	96,711	5,348,802	15,884,419	21,233,221
Residents	554,039	264,258	376,725	63,031	1,258,053	5,848,649	7,106,702
Non-residents	3,333,677	650,357	73,035	33,680	4,090,749	10,035,771	14,126,520

Of the total overnight stays in collective tourist accommodation, 75% accounted for hotels, and 25% did so for non-hotel tourist accommodation.



The main countries of origin in overall regulated tourist accommodation were the United Kingdom (with 25.9% of the total number of non-resident overnight stays), Germany (20.7%) and France (5.1%).

Canarias was the preferred destination, with 8 million overnight stays (3.1% more than in November 2014), followed by Andalucía, with more than 2.9 million overnight stays (and an annual increase of 10.8%), and Cataluña, with 2.5 million (and a 8.2% increase).

For further information see INEbase-www.ine.es/en/

All press releases at: www.ine.es/en/prensa/prensa_en.htm

Press Office: Telephone numbers: 91 583 93 63 / 94 08 – Fax: 91 583 90 87 - gpresa@ine.es

Information Area: Telephone number: 91 583 91 00 – Fax: 91 583 91 58 – www.ine.es/infone/?L=1

¹ The press release corresponding to Hotel Tourism Short-Term Trends was published on 23 November.

Tourist Accommodation Occupancy Survey (Holiday Dwellings)

November 2015 Provisional data

1. Travellers, overnight stays and average stay by Autonomous Cities and Communities

Autonomous Cities and Communities	Travellers			Overnight stays			Average stay
	Total	Residents in Spain	Residents abroad	Total	Residents in Spain	Residents abroad	
TOTAL	552,388	152,377	400,011	3,887,716	554,039	3,333,677	7.04
Andalucía	91,914	38,928	52,986	434,989	101,927	333,063	4.73
Aragón	6,441	5,798	643	19,665	15,970	3,694	3.05
Asturias, Principado de	1,211	1,130	81	3,899	3,011	888	3.22
Balears, Illes	6,335	1,416	4,919	45,905	4,371	41,534	7.25
Canarias	299,345	23,267	276,077	2,655,598	122,449	2,533,149	8.87
Cantabria	2,162	1,952	210	8,693	6,723	1,969	4.02
Castilla y León	7,677	7,487	190	20,845	18,970	1,875	2.72
Castilla - La Mancha	6,503	6,244	259	15,830	13,840	1,990	2.43
Cataluña	23,270	10,800	12,470	141,940	77,745	64,195	6.10
Comunitat Valenciana	53,274	19,817	33,457	333,292	74,333	258,959	6.26
Extremadura	4,221	3,986	236	7,606	7,168	437	1.80
Galicia	3,253	2,993	260	10,047	9,137	910	3.09
Madrid, Comunidad de	30,778	15,889	14,890	118,741	56,362	62,380	3.86
Murcia, Región de	3,985	1,888	2,097	35,779	13,005	22,774	8.98
Navarra, Comunidad Foral de	2,987	2,702	284	9,540	8,477	1,063	3.19
País Vasco	5,127	4,238	889	17,715	13,041	4,674	3.46
Rioja, La	3,907	3,845	61	7,633	7,510	123	1.95
Ceuta	-	-	-	-	-	-	-
Melilla	-	-	-	-	-	-	-
Annual rate	9.32	13.90	7.68	6.05	9.48	5.50	-3.00
Cumulative annual rate	5.88	11.28	3.11	2.62	7.43	1.15	-3.08

2. Capacity, occupancy and number of staff by Autonomous Cities and Communities

Autonomous Cities and Communities	Capacity		Level of occupancy				Employed personnel
	Estimated bedplaces	Estimated Holiday dwelling	Per bedplaces	Per bedplaces at weekend	Per Holiday dwelling	Per Holiday dwelling at weekend	
TOTAL	364,883	98,209	35.44	37.95	60.15	62.90	21,135
Andalucía	56,906	14,326	25.44	29.27	44.06	48.35	3,577
Aragón	6,122	1,388	10.89	20.35	18.48	28.70	432
Asturias, Principado de	3,214	885	4.04	5.25	7.80	9.13	210
Balears, Illes	4,125	1,139	37.89	40.46	59.69	63.33	358
Canarias	157,723	48,550	55.92	56.48	83.81	84.86	10,586
Cantabria	2,933	833	9.88	13.60	18.09	21.84	222
Castilla y León	5,023	1,075	14.06	28.88	26.15	39.26	438
Castilla - La Mancha	5,007	1,187	10.53	23.14	15.95	30.59	432
Cataluña	18,847	4,874	24.83	28.00	41.84	45.33	911
Comunitat Valenciana	77,608	16,059	14.31	16.40	29.37	32.25	2,336
Extremadura	1,662	394	15.22	25.60	24.11	33.79	153
Galicia	3,264	872	10.24	12.80	22.07	25.06	208
Madrid, Comunidad de	8,338	3,357	47.16	52.12	68.87	71.46	469
Murcia, Región de	7,925	1,850	15.05	16.04	29.53	30.99	268
Navarra, Comunidad Foral de	2,027	406	15.66	28.36	31.09	42.89	267
País Vasco	2,727	683	21.45	32.85	40.85	51.65	133
Rioja, La	1,433	330	17.70	43.45	26.79	61.24	135
Ceuta	-	-	-	-	-	-	-
Melilla	-	-	-	-	-	-	-
Annual rate	1.91	1.05	4.42	6.53	4.98	6.55	6.11
Cumulative annual rate	1.59	0.48	1.13	2.04	2.38	3.01	5.43

3. Travellers, overnight stays, capacity, occupancy, total number of staff with greater number of overnight stays *

Provinces	Travellers		Overnight stays			Capacity		Level of occupancy			Employed personnel
	Residents in Spain	Residents abroad	Residents in Spain	Residents abroad	Average stay	Estimated bed-places	Estimated holiday dwelling	Per bed-places	Per Holiday dwelling	Per Holiday dwelling at weekend	
Palmas, Las	14,416	175,029	74,330	1,668,344	9.20	102,667	31,598	56.31	85.61	86.77	6,568
Santa Cruz de Tenerife	8,852	101,048	48,119	864,805	8.31	55,056	16,952	55.18	80.46	81.29	4,018
Málaga	13,137	39,070	38,137	283,481	6.16	36,418	8,989	29.41	51.54	53.48	2,268
Alicante\Alacant	9,319	26,016	40,258	223,154	7.45	56,999	11,969	15.40	31.77	33.22	1,847
Barcelona	5,762	11,243	62,786	58,753	7.15	8,891	2,712	45.21	65.66	67.52	512
Valencia\València	6,861	6,926	22,021	29,273	3.72	9,523	2,015	17.95	33.80	42.78	322
Sevilla	9,163	7,170	24,492	23,742	2.95	4,240	1,300	37.61	58.56	72.67	326
Granada	7,160	3,993	16,926	13,879	2.76	4,620	1,231	22.23	37.68	44.79	396
Castellón\Castelló	3,636	515	12,055	6,531	4.48	11,086	2,076	5.59	11.21	16.46	168
Cádiz	2,686	1,625	6,307	6,905	3.07	2,498	665	17.53	26.44	31.78	208
Girona	2,443	797	8,196	3,199	3.52	6,756	1,479	5.54	8.84	13.16	276
Almería	1,348	591	4,757	3,636	4.33	4,121	957	6.79	12.29	14.43	136
Teruel	2,419	93	6,274	1,534	3.11	1,922	418	13.54	21.68	34.84	140
Zaragoza	1,887	405	5,686	1,766	3.25	1,017	273	24.40	42.94	56.07	87
Tarragona	1,673	431	4,761	2,243	3.33	2,106	456	11.09	25.17	33.02	70

4. Travellers, overnight stays, capacity, occupancy, total number of staff from tourist areas with greater number of overnight stays

Tourist Areas	Travellers		Overnight stays			Capacity		Level of occupancy			Employed personnel
	Residents in Spain	Residents abroad	Residents in Spain	Residents abroad	Average stay	Estimated bed-places	Estimated holiday dwelling	Per bed-places	Per Holiday dwelling	Per Holiday dwelling at weekend	
Isla de Gran Canaria	5,862	87,057	33,583	880,749	9.84	51,227	16,169	59.30	88.17	89.35	3,074
Isla de Tenerife	6,164	94,035	34,411	804,016	8.37	48,707	14,770	57.28	83.26	84.09	3,489
Isla de Lanzarote	6,103	65,316	30,011	559,950	8.26	35,984	10,681	54.38	83.83	84.97	2,583
Costa del Sol	10,573	37,524	33,513	280,428	6.53	35,297	8,705	29.62	52.07	53.71	2,186
Costa Blanca	8,728	25,720	38,531	219,963	7.50	55,130	11,598	15.63	32.27	33.57	1,795
Isla de Fuerteventura	2,451	22,657	10,736	227,645	9.49	15,457	4,747	50.89	80.93	82.00	910
Costa Barcelona	1,304	757	48,749	22,458	30.00	4,205	1,460	56.38	70.26	71.89	105
Barcelona	3,532	10,405	11,371	35,853	3.39	4,119	1,086	36.69	64.29	68.63	377
Isla de Mallorca	1,338	4,900	3,805	41,270	7.23	3,785	1,023	39.73	62.90	66.50	351
Isla de la Palma	1,853	3,199	8,758	30,315	7.73	2,738	998	47.53	66.35	70.54	270

5. Travellers, overnight stays, capacity, occupancy, total number of staff from tourist sites with greater number at overnights stays

Tourist sites	Travellers		Overnight stays			Capacity		Level of occupancy			Employed personnel
	Residents in Spain	Residents abroad	Residents in Spain	Residents abroad	Average stay	Estimated bed-places	Estimated holiday dwelling	Per bed-places	Per Holiday dwelling	Per Holiday dwelling at weekend	
San Bartolomé de Tirajana	3,203	50,558	16,352	521,674	10.01	30,967	9,899	57.62	88.59	89.90	1,810
Arona	1,312	41,861	9,450	363,946	8.65	20,273	6,219	61.39	86.70	87.02	1,467
Mogán	1,892	34,722	12,348	344,291	9.74	19,199	5,814	61.86	87.90	88.77	1,187
Tías	2,875	35,037	15,992	308,440	8.56	18,878	5,932	56.85	85.28	85.62	1,178
Adeje	1,503	28,827	8,963	247,931	8.47	15,450	4,297	55.23	88.43	89.12	1,029
Teguise	2,935	17,999	12,625	151,868	7.86	9,920	2,947	55.07	84.81	87.26	721
Benidorm	3,286	15,366	14,631	130,794	7.80	18,400	4,414	26.34	47.74	49.70	772
Madrid	14,865	14,190	51,271	59,563	3.81	7,736	3,098	47.44	69.05	71.69	424
Puerto de la Cruz	2,338	11,078	10,515	90,330	7.52	5,918	2,386	56.70	71.21	74.78	470
Pájara	455	7,451	1,798	91,408	11.79	5,340	1,814	57.01	86.38	86.41	388

* Provinces belonging to uniprovincial Autonomous Communities have not been included because they are reflected in previous tables.

6. Travellers and overnight stays by countries of residence

Countries	Travellers		Overnight stays	
	Total	%	Total	%
TOTAL	552,388	100.00	3,887,716	100.00
Residents in Spain	152,377	27.59	554,039	14.25
Residents abroad	400,011	72.41	3,333,677	85.75
Total residents abroad	400,011	100.00	3,333,677	100.00
Total residents in E.U (excluding Spain)	332,720	83.18	2,768,583	83.05
- Germany	54,362	13.59	552,896	16.59
- Austria	1,900	0.48	18,181	0.55
- Belgium	7,150	1.79	55,439	1.66
-Denmark	15,756	3.94	117,044	3.51
- Finland	19,301	4.83	187,862	5.64
- France	12,263	3.07	65,136	1.95
- Greece	327	0.08	1,426	0.04
- Ireland	13,838	3.46	106,910	3.21
- Italy	12,354	3.09	69,639	2.09
- Luxembourg	811	0.20	8,433	0.25
- Netherlands	17,874	4.47	160,660	4.82
- Poland	4,291	1.07	30,174	0.91
- Portugal	1,769	0.44	7,900	0.24
- United Kingdom	131,023	32.75	1,039,625	31.19
- Czech Republic	1,125	0.28	8,276	0.25
- Sweden	34,484	8.62	310,288	9.31
- Other EU countries	4,123	1.03	28,961	0.87
Norway	28,852	7.21	330,842	9.92
Russia	4,398	1.10	32,513	0.98
Switzerland	4,327	1.08	33,751	1.01
Other european countries	4,052	1.01	27,791	0.83
United States of America	5,814	1.45	26,859	0.81
Rest of America	7,257	1.81	47,847	1.44
African countries	2,896	0.72	15,431	0.46
Other countries	9,664	2.42	49,792	1.49

Tourist Accommodation Occupancy Survey Campsite Occupancy Survey (COS)

November 2015

Provisional data

1. Travellers, overnight stays and average stay by category of establishment

Category	Travellers			Overnight stays			Average stay
	Total	Residents in Spain	Residents abroad	Total	Residents in Spain	Residents abroad	
TOTAL	139,486	92,444	47,042	914,615	264,258	650,357	6.56
Luxury and first-class	54,586	33,005	21,581	364,135	102,429	261,706	6.67
Second-class	69,016	46,045	22,972	498,557	124,302	374,254	7.22
Third-class	15,883	13,394	2,489	51,923	37,527	14,396	3.27
Annual rate	3.59	0.62	9.96	10.98	9.84	11.45	7.14
Cumulative annual rate	6.04	5.35	7.46	6.69	5.99	7.48	0.61

2. Open establishments, capacity, occupancy and number of staff by category of establishments

Category	Estimated open establishments	Capacity		Occupied pitches	Occupancy rate per pitch	Weekend occupancy rate	Employed personnel
		Estimated bedplaces	Estimated pitches				
TOTAL	493	301,765	95,692	953,714	33.22	34.04	3,138
Luxury and first-class	129	122,733	38,224	381,674	33.28	31.94	1,403
Second-class	286	154,827	49,078	502,079	34.10	35.66	1,495
Third-class	79	24,205	8,390	69,960	27.79	33.70	240
Annual rate	2.18	-0.88	0.31	2.04	1.72	-1.46	4.60
Cumulative annual rate	1.22	0.90	0.80	4.47	3.62	2.84	6.28

3. Travellers, overnight stays and average stay by Autonomous Cities and Communities

Autonomous cities and communities	Travellers			Overnight stays			Average stay
	Total	Residents in Spain	Residents abroad	Total	Residents in Spain	Residents abroad	
TOTAL	139,486	92,444	47,042	914,615	264,258	650,357	6.56
Andalucía	23,963	11,845	12,117	163,055	45,371	117,685	6.80
Aragón	4,744	3,599	1,146	13,316	10,094	3,222	2.81
Asturias, Principado de	1,021	729	292	2,369	1,700	669	2.32
Balears, Illes	-	-	-	-	-	-	-
Canarias	984	808	176	5,440	1,906	3,534	5.53
Cantabria	1,729	1,718	10	3,781	3,771	10	2.19
Castilla y León	3,398	1,489	1,909	6,305	3,341	2,964	1.86
Castilla - La Mancha	1,507	1,292	214	2,742	2,359	383	1.82
Cataluña	44,205	37,615	6,590	122,692	87,531	35,161	2.78
Comunitat Valenciana	28,545	10,980	17,566	440,737	47,578	393,159	15.44
Extremadura	2,093	1,167	927	4,324	2,983	1,341	2.07
Galicia	453	354	99	765	577	188	1.69
Madrid, Comunidad de	9,878	8,701	1,177	31,919	27,932	3,987	3.23
Murcia, Región de	6,386	3,260	3,126	95,009	9,932	85,077	14.88
Navarra, Comunidad Foral de	2,690	2,414	276	6,321	5,848	472	2.35
País Vasco	2,606	1,700	906	5,673	4,019	1,653	2.18
Rioja, La	5,283	4,773	510	10,168	9,315	853	1.92
Ceuta	-	-	-	-	-	-	-
Melilla	-	-	-	-	-	-	-

4. Open establishments, capacity, occupancy and number of staff by autonomous cities and communities

Autonomous cities and communities	Estimated open establishments	Capacity		Occupied pitches	Occupancy rate per pitch	Weekend occupancy rate	Employed personnel
		Estimated bedplaces	Estimated pitches				
TOTAL	493	301,765	95,692	953,714	33.22	34.04	3,138
Andalucía	106	62,763	20,223	128,905	21.25	22.20	642
Aragón	39	15,898	5,022	29,362	19.49	20.90	158
Asturias, Principado de	8	5,690	1,729	9,396	18.12	26.46	27
Balears, Illes	-	-	-	-	-	-	-
Canarias	4	3,224	1,374	6,262	15.19	16.46	18
Cantabria	11	6,788	2,122	35,587	55.90	53.75	39
Castilla y León	29	10,022	3,276	18,425	18.75	22.09	76
Castilla - La Mancha	13	4,547	1,541	11,777	25.48	29.01	40
Cataluña	86	64,502	19,720	177,818	30.06	34.04	598
Comunitat Valenciana	97	65,109	20,392	309,612	50.61	47.20	871
Extremadura	11	3,931	1,364	10,174	24.86	25.48	69
Galicia	18	6,291	2,210	3,796	5.73	5.91	51
Madrid, Comunidad de	19	17,113	5,725	84,309	49.09	48.37	183
Murcia, Región de	18	14,815	4,898	61,702	41.99	44.41	179
Navarra, Comunidad Foral de	12	7,201	1,826	15,378	28.07	28.55	71
País Vasco	13	5,939	1,860	10,403	18.64	25.50	58
Rioja, La	8	7,933	2,409	40,809	56.47	57.00	59
Ceuta	-	-	-	-	-	-	-
Melilla	-	-	-	-	-	-	-

5. Travellers and overnight stays, average stay, capacity, occupancy and number of staff by provinces with the greatest number of overnight stays**

Provinces	Travellers		Overnight stays		Average stay	Estimated open establishments	Estimated pitches	Occupancy rate per pitch	Employed personnel
	Residents in Spain	Residents abroad	Residents in Spain	Residents abroad					
	Alicante/Alacant	1,714	8,370	17,289					
Castellón/Castelló	2,679	6,482	13,223	75,997	9.74	32	5,980	35.94	283
Málaga	1,801	3,870	13,162	64,855	13.76	29	4,638	35.33	185
Barcelona	15,882	2,602	34,681	20,908	3.01	23	6,230	30.62	201
Valencia/València	6,587	2,714	17,066	30,750	5.14	27	5,040	45.00	198
Almería	1,411	2,662	11,083	27,175	9.39	16	2,433	29.69	91
Girona	11,056	3,091	18,523	10,196	2.03	30	5,768	27.09	210
Tarragona	6,287	810	23,843	3,465	3.85	19	4,880	20.82	117
Granada	1,250	2,206	3,275	10,808	4.07	21	2,525	15.53	98
Huelva	3,899	667	9,278	3,242	2.74	10	4,716	17.32	82
Cádiz	1,254	1,595	2,995	9,499	4.39	13	3,137	12.54	96
Lleida	4,390	87	10,483	593	2.47	15	2,842	50.69	70
Huesca	2,610	242	6,333	387	2.36	22	3,325	24.17	114
Zaragoza	307	865	2,418	2,603	4.28	7	680	18.56	22
Gipúzkoa	955	793	1,700	1,391	1.77	7	1,255	13.46	25

** Provinces belonging to uniprovincial Autonomous Communities have not been included because they are reflected in previous tables.

6. Travellers, overnight stays, average stay, open establishments, capacity, occupancy and number of staff from tourist areas with the greatest number of overnight stays

Tourist areas	Travellers		Overnight stays		Average stay	Estimated open establishments	Estimated pitches	Occupancy rate per pitch	Employed personnel
	Residents in	Residents abroad	Residents in	Residents abroad					
	Spain		Spain						
Costa Blanca	1,483	6,311	12,980	248,700	30.00	30	7,147	70.02	327
Costa de Castellón	1,419	6,130	11,068	74,977	11.40	28	5,648	35.78	271
Costa Cálida	876	2,563	3,592	79,488	24.16	9	3,798	44.01	135
Costa del Sol	652	3,239	11,463	62,257	18.95	13	3,275	45.66	137
Costa Barcelona	8,457	2,568	20,726	20,826	3.77	10	4,719	23.65	142
Costa Valencia	2,131	2,015	7,691	32,785	9.76	11	3,098	46.33	125
Costa de Almería	1,265	2,630	10,742	25,399	9.28	12	2,120	30.25	74
Pirineus	14,966	70	28,465	126	1.90	33	4,900	49.02	147
Costa Daurada	5,913	481	22,382	2,548	3.90	12	3,852	23.05	88
Costa Brava	5,685	3,075	9,797	10,176	2.28	18	4,243	22.50	155
Costa de la Luz (Cádiz)	720	1,481	1,997	9,061	5.02	9	2,526	13.86	77
Costa de la Luz (Huelva)	2,921	634	7,699	2,742	2.94	6	4,058	15.41	64
Costa Tropical	236	881	1,565	7,070	7.73	7	1,189	17.01	38
Pirineo Aragonés	2,582	219	6,264	348	2.36	20	3,165	21.79	110
P.N. Doñana	1,054	430	2,920	1,309	2.85	4	2,678	13.59	42

7. Travellers, overnight stays, average stay, open establishments, capacity, occupancy and number of staff from tourist sites with the greatest number at overnights stays

Tourist sites	Travellers		Overnight stays		Average stay	Estimated open establishments	Estimated pitches	Occupancy rate per pitch	Employed personnel
	Residents in	Residents abroad	Residents in	Residents abroad					
	Spain		Spain						
Benidorm	304	2,308	6,136	142,609	30.00	9	3,760	76.64	128
Cartagena	143	1,175	1,333	49,231	30.00	3	2,537	34.98	84
Marbella	201	1,185	8,109	28,829	26.65	3	1,313	45.43	53
Mazarrón	258	1,013	1,289	25,783	21.30	3	874	61.98	35
Oliva	117	1,036	2,122	20,389	19.52	5	1,244	33.99	76
Peñíscola/Peñíscola	315	2,818	2,502	19,894	7.15	8	1,329	31.33	80
Vélez-Málaga	179	928	1,050	19,875	18.90	4	744	56.99	45
Cabanes	181	724	1,201	18,243	21.49	3	973	34.52	45
Benicasim/Benicàssim	58	946	380	13,934	14.27	4	846	42.83	39
Calp	28	702	103	12,219	16.88	4	289	77.58	14
Campello (El)	110	722	2,083	7,375	11.37	4	341	55.89	19
Motril	173	607	1,023	5,402	8.24	3	586	26.15	23

8. Travellers and overnight stays by countries of residence

Countries	Travellers		Overnight stays	
	Total	%	Total	%
TOTAL	139,486	100.00	914,615	100.00
Residents in Spain	92,444	66.27	264,258	28.89
Residents abroad	47,042	33.73	650,357	71.11
TOTAL residents abroad	47,042	100.00	650,357	100.00
TOTAL residents in E.U. (excluding Spain)	43,564	92.61	624,999	96.10
- Germany	10,583	22.50	149,397	22.97
- Austria	448	0.95	4,346	0.67
- Belgium	2,231	4.74	32,604	5.01
- Denmark	360	0.77	5,965	0.92
- Finland	495	1.05	4,783	0.74
- France	8,509	18.09	60,244	9.26
- Greece	0	0.00	0	0.00
- Ireland	576	1.22	4,940	0.76
- Italy	750	1.59	4,313	0.66
- Luxembourg	87	0.19	1,668	0.26
- Netherlands	6,641	14.12	103,701	15.95
- Poland	126	0.27	615	0.09
- Portugal	176	0.37	516	0.08
- United Kingdom	10,362	22.03	227,472	34.98
- Czech Republic	158	0.34	1,916	0.29
- Sweden	1,771	3.76	21,743	3.34
- Other EU countries	289	0.62	777	0.12
Norway	382	0.81	4,860	0.75
Russia	17	0.04	100	0.02
Switzerland	1,833	3.90	14,158	2.18
Other European countries	280	0.60	1,183	0.18
United States of America	59	0.12	515	0.08
Rest of America	329	0.70	830	0.13
African countries	9	0.02	134	0.02
Other countries	569	1.21	3,576	0.55

* Non-significant data

**Tourist accommodation occupancy survey
(Rural tourist accommodation)**

November 2015

Provisional data

1. Number of travellers, overnight stays and average stay by Autonomous City and Community

Autonomous Communities	Number of travellers			Number of overnight stays			Average stay
	Total	Residents In Spain	Residents abroad	Total	Residents In Spain	Residents abroad	
TOTAL	202,162	185,881	16,281	449,760	376,725	73,035	2.22
Andalucía	16,079	13,542	2,538	42,344	30,398	11,947	2.63
Aragón	7,525	7,307	218	18,938	18,275	663	2.52
Asturias, Principado de	7,864	7,754	110	16,838	16,670	168	2.14
Balears, Illes	3,736	1,154	2,582	13,372	2,131	11,240	3.58
Canarias	7,052	1,752	5,300	38,806	6,596	32,210	5.50
Cantabria	8,196	8,070	125	15,205	14,979	227	1.86
Castilla y León	48,890	48,029	862	95,024	92,208	2,815	1.94
Castilla-La Mancha	16,962	16,772	190	34,950	34,261	689	2.06
Cataluña	25,589	24,506	1,083	52,618	49,057	3,561	2.06
Comunitat Valenciana	7,937	7,284	653	17,792	14,322	3,470	2.24
Extremadura	12,916	12,617	300	24,914	24,268	647	1.93
Galicia	7,826	7,459	366	12,846	12,322	524	1.64
Madrid, Comunidad de	9,355	8,524	831	16,622	15,241	1,382	1.78
Murcia, Región de	2,314	2,147	167	5,147	4,540	607	2.22
Navarra, Comunidad Foral de	8,631	8,413	218	19,987	19,090	897	2.32
País Vasco	8,738	8,062	676	19,037	17,204	1,833	2.18
Rioja, La	2,553	2,489	64	5,318	5,164	154	2.08
Ceuta	-	-	-	-	-	-	-
Melilla	-	-	-	-	-	-	-
Annual rate	6.44	5.62	16.74	8.78	7.06	18.55	2.20
Cumulative annual rate	14.41	14.27	15.12	12.88	13.94	9.89	-1.34

2. Open rural establishments, bed-places, occupancy rates and employed personnel by Autonomous City and Community

Autonomous Communities	Estimated open rural establishments	Estimated bed-places	Occupancy rate			Employed personnel
			Of bed-places	Of bed-places at weekend	Of bedrooms	
TOTAL	14,999	138,929	10.76	27.33	13.59	19,922
Andalucía	1,488	13,064	10.79	23.85	14.62	2,068
Aragón	1,162	9,126	6.89	16.91	8.93	1,326
Asturias, Principado de	1,169	11,042	5.08	9.75	6.36	1,412
Balears, Illes	117	2,212	20.14	25.54	23.59	487
Canarias	671	4,086	31.53	33.91	48.17	910
Cantabria	303	4,935	10.25	28.89	11.28	473
Castilla y León	3,196	28,264	11.18	32.97	13.34	4,099
Castilla-La Mancha	1,506	13,073	8.90	27.31	11.64	1,833
Cataluña	1,993	16,212	10.80	35.10	12.97	2,639
Comunitat Valenciana	893	9,241	6.41	16.80	11.52	1,273
Extremadura	545	6,612	12.54	32.41	15.74	780
Galicia	465	5,734	7.45	18.06	7.68	726
Madrid, Comunidad de	243	3,698	14.92	37.17	19.50	441
Murcia, Región de	136	1,990	8.62	21.16	12.69	215
Navarra, Comunidad Foral de	642	4,720	14.06	40.20	15.89	705
País Vasco	353	3,846	16.40	34.08	19.13	396
Rioja, La	116	1,073	16.35	50.67	16.52	138
Ceuta	-	-	-	-	-	-
Melilla	-	-	-	-	-	-
Annual rate	0.57	2.37	6.22	12.94	4.72	-2.44
Cumulative annual rate	0.54	0.98	11.68	14.06	9.75	0.82

3. Number of travellers, overnight stays and average stay in Provinces with the greatest number of overnight stays¹

Provinces	Number of travellers			Number of overnight stays			Average stay
	Total	Residents In Spain	Residents abroad	Total	Residents In Spain	Residents abroad	
Santa Cruz de Tenerife	4,912	1,112	3,800	29,499	4,974	24,524	6.01
Girona	11,149	10,883	265	22,781	22,337	444	2.04
Cáceres	10,606	10,392	214	20,877	20,427	450	1.97
Ávila	9,301	9,162	139	19,801	18,580	1,221	2.13
Segovia	10,664	10,505	160	19,322	19,135	187	1.81
Barcelona	8,185	7,718	467	17,207	15,696	1,511	2.10
Málaga	2,968	1,902	1,066	12,930	6,688	6,242	4.36
Soria	5,960	5,934	26	12,217	12,178	39	2.05
Gipuzkoa	4,885	4,509	375	11,120	10,003	1,118	2.28
Salamanca	5,666	5,537	129	10,447	10,289	158	1.84
Burgos	4,912	4,820	91	9,860	9,656	203	2.01
Huelva	4,918	4,396	523	9,473	8,403	1,071	1.93
Palmas, Las	2,139	640	1,500	9,307	1,622	7,686	4.35
Lleida	4,101	4,002	99	8,424	7,754	670	2.05
León	4,470	4,321	148	8,203	8,014	189	1.84

4. Open rural establishments, bed-places, occupancy rates and employed personnel in Provinces with the highest number of overnight stays¹

Provinces	Estimated open rural establishments	Estimated bed-places	Occupancy rate			Employed personnel
			Of bed-places	Of bed-places at weekend	Of bedrooms	
Santa Cruz de Tenerife	548	3,122	31.34	34.09	48.13	713
Girona	665	5,463	13.88	46.44	15.49	930
Cáceres	460	5,605	12.40	32.11	15.66	637
Ávila	726	5,869	11.24	32.75	15.05	793
Segovia	407	3,726	17.22	53.88	19.08	557
Barcelona	507	4,457	12.82	41.28	16.36	713
Málaga	550	3,661	11.75	17.97	17.09	702
Soria	307	2,784	14.55	42.09	16.19	398
Gipuzkoa	163	1,881	19.57	37.14	23.37	197
Salamanca	466	3,786	9.18	27.34	10.51	580
Burgos	337	3,334	9.84	32.74	11.37	393
Huelva	162	1,294	24.34	61.64	31.19	304
Palmas, Las	123	963	32.15	33.34	48.34	197
Lleida	560	4,088	6.86	21.72	8.53	686
León	399	3,386	8.07	23.12	9.72	592

¹ Provinces belonging to uniprovincial Autonomous Communities have not been included because they are reflected in previous tables.

5. Number of travellers, overnight stays, average stay, capacity and occupancy rates in areas with the highest number of overnight stays

Areas	Number of travellers		Number of overnight stays			Capacity		Occupancy rate		
	Residents In Spain	Residents abroad	Residents In Spain	Residents abroad	Average stay	Estimated open rural establishments	Estimated bed-places	Of bed-places	Of bed- places at weekend	Of bedrooms
Pirineus	9,823	259	19,425	921	2.02	819	6,241	10.84	36.84	12.77
Pirineo Navarro	7,828	220	18,001	873	2.35	578	4,178	14.99	42.08	17.05
Extremadura Norte	7,871	141	15,756	296	2.00	314	3,944	13.56	34.96	16.58
Isla de Tenerife	790	2,327	1,606	12,384	4.49	127	1,262	36.59	42.18	49.76
Costa Brava	5,838	146	12,782	274	2.18	385	3,247	13.38	43.40	14.29
Isla de Mallorca	687	2,377	1,285	10,634	3.89	107	1,954	20.32	25.07	23.85
Isla de La Palma	243	1,049	2,443	8,953	8.82	308	1,263	30.08	31.20	52.40
P.Nacional Teide	601	1,892	1,242	9,574	4.34	84	910	39.14	45.41	53.17
Pirineo Aragonés	2,805	33	6,895	156	2.48	542	4,027	5.83	16.01	6.67
P.Nacional Picos de Europa	2,856	28	6,522	28	2.27	209	1,999	10.92	21.79	12.42
P.Nacional Taburiente	175	695	1,495	4,936	7.39	180	742	28.90	30.81	51.52
P.Natural Sierra de Aracena y Pi	3,091	230	5,809	603	1.93	122	847	25.13	68.32	33.40
Isla Gran Canaria	490	793	1,183	3,907	3.97	97	656	25.79	26.35	44.55
Pirineo Vasco	1,887	139	4,181	636	2.38	116	1,224	12.98	26.09	13.91
Costa Barcelona 2015	1,957	247	3,882	346	1.92	133	1,127	12.44	37.72	13.90

6. Number of travellers, overnight stays, average stay, capacity, occupancy rates and employed personnel per rural house by Autonomous City and Community²

Autonomous Communities	Number of travellers		Number of overnight stays			Capacity		Occupancy rate		Employed personnel
	Residents In Spain	Residents abroad	Residents In Spain	Residents abroad	Average stay	Estimated open rural establish.	Estimated bed-places	Of bed-places	Of bed- places at weekends	
TOTAL	130,497	9,595	275,184	48,596	2.31	12,906	103,946	10.36	27.79	15,920
Andalucía	13,542	2,538	30,398	11,947	2.63	1,488	13,064	10.79	23.85	2,068
Aragón	6,265	199	15,009	629	2.42	909	7,056	7.35	18.46	1,033
Asturias, Principado de	2,825	42	5,757	77	2.03	754	4,750	4.09	8.54	849
Balears, Illes	633	1,115	1,316	3,911	2.99	43	646	26.97	38.47	119
Canarias	641	2,614	4,510	19,963	7.52	641	3,241	25.15	26.36	754
Cantabria	1,841	6	3,949	11	2.14	138	1,963	6.72	20.67	184
Castilla y León	30,910	169	63,850	1,745	2.11	2,804	20,074	10.87	34.19	3,132
Castilla-La Mancha	16,115	187	33,056	686	2.07	1,478	12,527	8.97	27.48	1,794
Cataluña	24,506	1,083	49,057	3,561	2.06	1,993	16,212	10.80	35.10	2,639
Comunitat Valenciana	5,065	554	10,935	2,889	2.46	851	6,987	6.59	16.46	1,162
Extremadura	4,726	92	8,726	237	1.86	313	3,100	9.60	27.25	369
Galicia	4,950	253	8,664	369	1.74	344	4,010	7.49	18.16	492
Madrid, Comunidad de	2,297	65	4,021	97	1.74	70	795	17.22	46.65	101
Murcia, Región de	1,274	45	3,300	423	2.82	123	1,648	7.53	20.45	169
Navarra, Comunidad Foral de	8,413	218	19,090	897	2.32	642	4,720	14.06	40.20	705
País Vasco	4,006	352	8,383	1,000	2.15	199	2,080	14.91	32.98	213
Rioja, La	2,489	64	5,164	154	2.08	116	1,073	16.35	50.67	138
Ceuta	-	-	-	-	-	-	-	-	-	-
Melilla	-	-	-	-	-	-	-	-	-	-

² To facilitate the comparability between data from different Autonomous Communities (and because of the different regulation and different characteristics), a group called rural house has been created, with those establishments with similar typology (location, capacity, etc...).

The variables included in the previous table have been estimated with that type of establishments.

7. Travellers and overnight stays by country of residence

Results by countries	Travellers		Overnight stays	
	Total	%	Total	%
TOTAL	202,162	100.00	449,760	100.00
Residents Spain	185,881	91.95	376,725	83.76
Residents abroad	16,281	8.05	73,035	16.24
Total Residents abroad	16,281	100.00	73,035	100.00
Total Residents in EU (excluding Spain)	13,343	81.95	64,327	88.08
- Germany	5,297	32.53	31,490	43.12
- Belgium	519	3.19	1,797	2.46
- France	1,679	10.31	4,779	6.54
- Italy	519	3.19	1,605	2.20
- Netherlands	1,439	8.84	6,679	9.15
- Portugal	596	3.66	1,957	2.68
- United Kingdom	2,154	13.23	9,214	12.62
Switzerland	424	2.61	1,796	2.46
Other European countries	1,756	10.79	8,779	12.02
United States of America	699	4.29	2,691	3.69
Other countries	1,199	7.36	2,247	3.08

**Tourist Accomodation Occupancy Survey
Hostels Occupancy Survey (HOS)
November 2015** Provisional data

1. Travellers, overnight stays and average stay by Autonomous Cities and Communities

Autonomous cities and communities	Travellers			Overnight stays			Average stay
	Total	Residents in Spain	Residents abroad	Total	Residents in Spain	Residents abroad	
TOTAL	48,346	34,290	14,057	96,711	63,031	33,680	2.00
Andalucía	6,113	4,871	1,242	10,898	8,544	2,354	1.78
Aragón	1,128	1,107	21	2,715	2,442	273	2.41
Asturias, Principado de	-	-	-	-	-	-	-
Balears, Illes	-	-	-	-	-	-	-
Canarias	-	-	-	-	-	-	-
Cantabria	736	724	12	1,026	1,014	12	1.39
Castilla y León	3,267	2,896	371	6,408	5,491	916	1.96
Castilla - La Mancha	1,927	1,877	50	3,488	3,419	69	1.81
Cataluña	17,651	9,709	7,942	36,472	16,579	19,892	2.07
Comunitat Valenciana	4,925	2,916	2,009	10,847	5,934	4,913	2.20
Extremadura	894	887	7	1,478	1,468	10	1.65
Galicia	405	393	12	528	508	20	1.30
Madrid, Comunidad de	3,365	2,492	873	6,138	4,322	1,816	1.82
Murcia, Región de	-	-	-	-	-	-	-
Navarra, Comunidad Foral de	757	746	11	2,146	2,037	110	2.84
País Vasco	6,100	4,849	1,251	12,662	10,007	2,655	2.08
Rioja, La	462	459	3	720	716	3	1.56
Ceuta	-	-	-	-	-	-	-
Melilla	-	-	-	-	-	-	-
Annual rate	-2.22	-0.83	-5.45	-3.93	-2.81	-5.96	-1.75
Cumulative annual rate	0.66	-0.26	2.58	0.57	-2.45	7.50	-0.09

2. Open establishments, capacity, occupancy and number of staff by autonomous cities and communities

Autonomous cities and communities	Capacity		Occupancy rate		Employed personnel
	Estimated open establishments	Estimated bed-places	Of bed-places	Of bed-places at weekend	
TOTAL	179	20,986	15.36	27.82	1,394
Andalucía	11	2,359	15.40	27.54	163
Aragón	16	1,356	6.67	12.30	87
Asturias, Principado de	-	-	-	-	-
Balears, Illes	-	-	-	-	-
Canarias	-	-	-	-	-
Cantabria	8	451	7.58	24.33	23
Castilla y León	23	2,106	10.14	20.66	142
Castilla - La Mancha	22	2,197	5.29	12.33	92
Cataluña	32	5,385	22.58	42.19	289
Comunitat Valenciana	10	1,752	20.64	39.67	106
Extremadura	10	826	5.96	14.54	45
Galicia	4	471	3.74	5.73	18
Madrid, Comunidad de	7	577	35.46	48.68	165
Murcia, Región de	-	-	-	-	-
Navarra, Comunidad Foral de	7	601	11.91	13.40	36
País Vasco	19	2,291	18.42	24.91	148
Rioja, La	5	240	9.99	34.92	11
Ceuta	-	-	-	-	-
Melilla	-	-	-	-	-
Annual rate	-1.36	-3.40	-0.55	11.46	-6.94
Cumulative annual rate	0.39	0.05	0.53	-0.70	-0.58

3. Travellers and overnight stays by countries of residence

Countries	Travellers		Overnight stays		Average stay
	Total	%	Total	%	
TOTAL	48,346	100.00	96,711	100.00	2.00
Residents in Spain	34,290	70.93	63,031	65.17	1.84
Residents abroad	14,057	29.07	33,680	34.83	2.40
TOTAL residents abroad	14,057	100.00	33,680	100.00	2.40
TOTAL residents in E.U. (excluding Spain)	9,175	65.27	22,591	67.08	2.46
- Germany	1,642	11.68	3,908	11.60	2.38
- Belgium	450	3.20	1,127	3.35	2.50
- France	1,963	13.97	4,831	14.34	2.46
- Italy	1,450	10.32	3,874	11.50	2.67
- Netherlands	702	4.99	1,929	5.73	2.75
- Portugal	276	1.96	775	2.30	2.81
- United Kingdom	1,410	10.03	3,354	9.96	2.38
Switzerland	340	2.42	527	1.57	1.55
Other European countries	2,482	17.66	5,453	16.19	2.20
United States of America	761	5.42	1,697	5.04	2.23
Other countries	2,580	18.35	6,205	18.42	2.41

HOLIDAY DWELLING PRICE INDEX (HDPI)

October 2015

Provisional data

National general index and breakdown by rates

	Index	Annual variation rate
TOTAL	116.75	5.14
Normal	113.79	3.78
Weekend	124.68	5.38
Tour-operators and travel agencies	119.65	6.15

National general index and breakdown by modalities

	Index	Annual variation rate
TOTAL	116.75	5.14
Studio	114.60	6.84
Dwellings 2/4 bedplaces	114.58	4.92
Dwellings 4/6 bedplaces	130.37	4.55

Tourist Campsite Price Index (TCSPI). 2002 Base

October 2015

Provisional data

National general index and breakdown by rates

	Index	Annual variation rate
TOTAL	131.26	0.93
Normal rate	129.27	1.67
Special rate for stays up to one month	142.40	1.57
Special rate for stays longer than one month	127.29	0.55
Tarifa bungalow*	101.37	1.37

National general index and breakdown by categories

	Index	Annual variation rate
TOTAL	131.26	0.93
Luxury and first	129.16	1.73
Second	134.61	0.12
Third	98.20	2.57

*2014 Base

TCSPI (ANNEX OF TABLES) - OCTOBER 2015

27th november 2015

**Rural Tourism Accommodation Price Index (RTAPI)
November 2015**

Provisional data

**General Autonomous Cities and Communities
and national indices**

	Index	Annual variation rate
TOTAL	128.49	1.44
Andalucía	130.90	1.55
Aragón	148.92	2.43
Asturias, Principado de	117.04	-1.26
Balears, Illes	114.13	1.93
Canarias	99.46	-0.58
Cantabria	128.51	3.44
Castilla y León	128.34	4.42
Castilla - La Mancha	122.00	6.40
Cataluña	128.25	-6.99
Comunitat Valenciana	125.42	2.41
Extremadura	118.15	3.28
Galicia	121.56	0.20
Madrid, Comunidad de	145.10	1.10
Murcia, Región de	126.68	-5.71
Navarra, Comunidad Foral de	171.17	7.18
País Vasco	129.89	3.75
Rioja, La	128.02	-7.55
Ceuta	-	-
Melilla	-	-

National general index and breakdown by rates

	Index	Annual variation rate
TOTAL	128.49	1.44
Normal	123.04	1.26
Weekend	133.60	1.49

National general index and breakdown by rent modality

	Index	Annual variation rate
TOTAL	128.49	1.44
Shared use (in case of per room rent modality)	113.30	0.92
Full use (rent of entire dwelling)	135.08	1.60