

**Hotel Tourism Short-Term Trends (HOS/HPI/ADR/REVPAR)
January 2012. Provisional data**

Overnight stays in hotel establishments increase 3.5%* in January, as compared with the same month in 2011

Hotels earn 28.9 euros per available room and invoice an average of 68.3 euros per occupied room

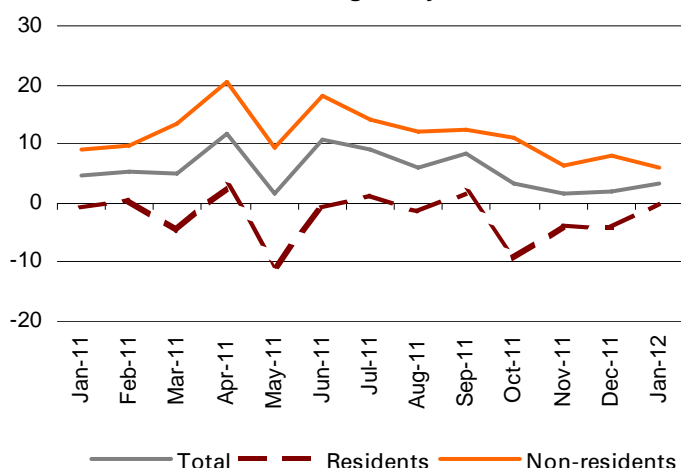
During the month of January, 12.6 million overnight stays were recorded in hotel establishments, indicating a 3.5% increase as compared with the same month in 2011. Overnight stays decreased 0.2% for residents, whereas non-residents experienced an increase of 6.1%.

The average stay increased 1.0% as compared with January 2011, standing at 3.1 nights per guest.

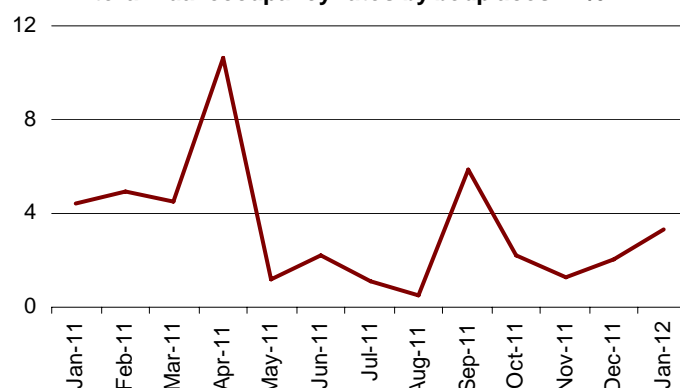
In turn, **the Hotel Price Index (HPI) registered a 0.3% increase in January.** Regarding the indicators on the profitability of the hotel sector, invoicing per occupied room reached an average value of 68.3 euros, and income per available room stood at 28.9 euros.

In terms of occupancy, 37.4% of the available bedplaces were filled in January, indicating a 3.3% increase as compared with the same month the previous year. The weekend occupancy rate by bedplaces stood at 40.0%, with an increase of 2.2%.

Interannual rates of overnight stays in %



Interannual occupancy rates by bedplaces in %



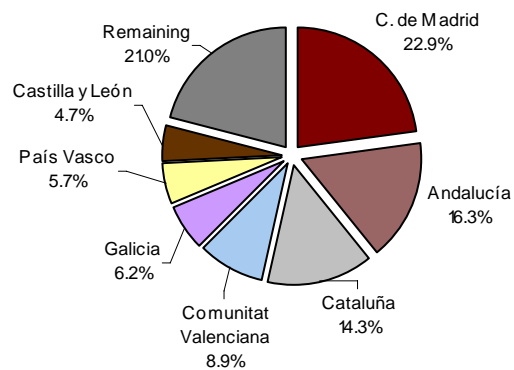
*Due to the extraordinary update made in the in the directory of hotel establishments in Extremadura, the data published for this Community and the national total cannot be directly compared to those published in previous years. To save the break in the series have been calculated linking coefficients for comparing data between years. The coefficients are published monthly on the INE website in the section dedicated to each statistical operation, in a specific section entitled linking coefficients.

Overnight stays of guests resident abroad

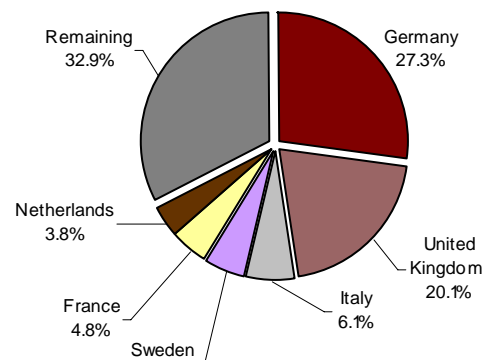
Guests from Germany and the United Kingdom registered rates of 27.3% and 20.1%, respectively, of the total overnight stays in January 2012. The German market experienced a 3.7% interannual increase in overnight stays, while the British market registered a 0.8% increase.

Overnight stays of guests from Italy, Sweden and France (the following countries of origin) registered interannual rates of -5.5%, 25.7% and 10.2%, respectively.

Overnight stays of guests resident in Spain by Autonomous Community of origin in %



Overnight stays of guests resident abroad by country of origin in %

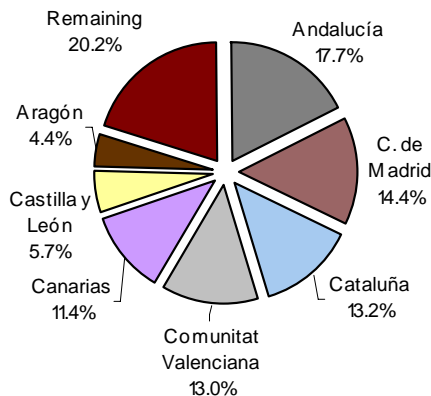


Main destinations

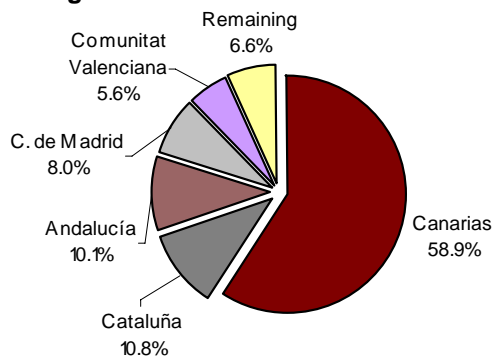
The main destination chosen by non-residents was Canarias. In this Autonomous Community, overnight stays by foreign nationals increased 7.7% as compared with January 2011. It was followed by Cataluña, with an interannual rate of 1.1%, and Andalucía, with an increase of 14.7%.

Andalucía, Comunidad de Madrid and Cataluña were the main destinations of guests resident in Spain, with interannual rates for overnight stays of -5.4%, 0.3% and 3.7%, respectively.

Distribution of overnight stays of guests resident in Spain in %



Distribution of overnight stays of guests resident abroad in %



Results by Autonomous Community, tourist area and tourist site

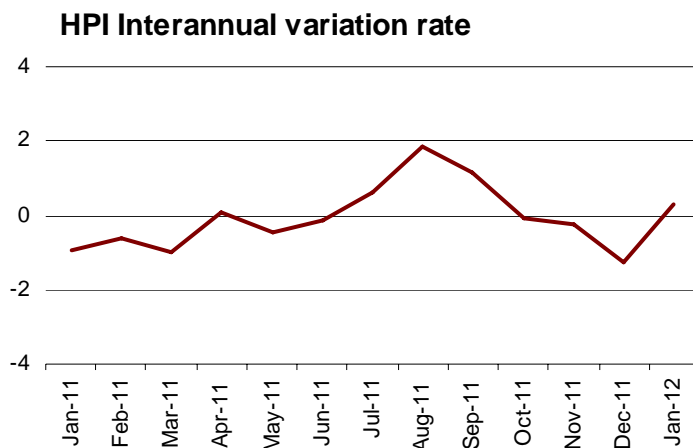
During the month of January, Canarias was the Autonomous Community with the highest occupancy rate by bedplaces (71.3%), followed by Comunidad de Madrid (41.0%) and Comunitat Valenciana (35.3%).

The tourist areas with the highest occupancy and overnight stay rates were located on the islands and the coasts, as well as in parts of the Pyrenees. Gran Canaria recorded both the highest occupancy rate by bedplaces (78.0%) and the highest weekend occupancy rate by bedplaces (78.7%). Tenerife registered more than 2 million overnight stays in January.

The tourist sites with the highest number of overnight stays were Madrid, San Bartolomé de Tirajana and Adeje. Arona reached the highest occupancy rate by bedplaces (83.3%), and Puerto de la Cruz reached the highest weekend occupancy (83.8%).

Evolution of the Hotel Price Index

The interannual rate of the HPI stood at 0.3% in January, this rate being 1.6 points higher than that obtained last month, and 1.2 points higher than that registered one year ago.



HPI by Autonomous Community

The four Communities (Canarias, Comunidad de Madrid, Cataluña and Andalucía) that carried 76.9% of the total weight of the HPI in the month of January, showed uneven behaviour.

Canarias, which carried the greatest load in the weighting structure this month, presented an interannual rate of 5.6%, that is, 2.7 points higher than that estimated in December. Hotel prices experienced a decrease of 3.7% in Comunidad de Madrid, 0.1 points more than the previous month. Cataluña showed an interannual rate of -1.5%, as compared with the -1.8% observed last month. In Andalucía, the interannual variation was -1.3%, that is, 1.8 points more than that obtained in the month of December.

HPI by category

Hotel prices increased in four-gold-star hotels and one-gold-star (both with 1.6% in the interannual rate), in three- and two-silver-star hotels (0.6%) and in one-silver-star hotels (0.8%) in January.

Conversely, five-, three- and two-gold-star hotels recorded interannual decreases of 0.7%, 1.8% and 2.5%, respectively.

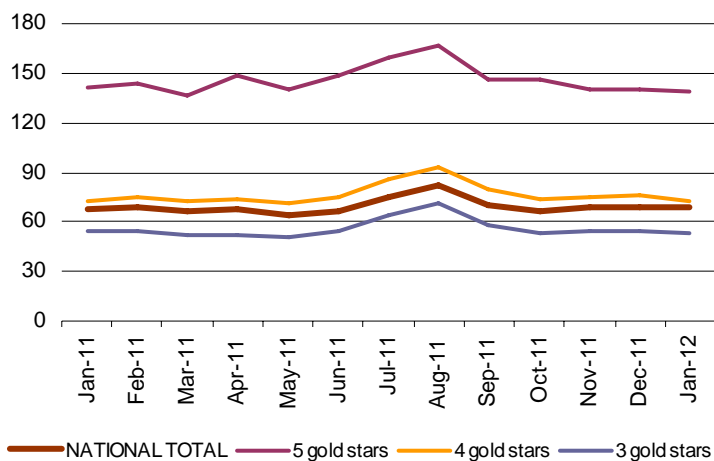
Indicators on the Profitability of the Hotel Sector

The average invoicing by hotels per occupied room (ADR) in January was 68.3 euros, indicating an increase of 0.2 euros as compared with the same month in 2011.

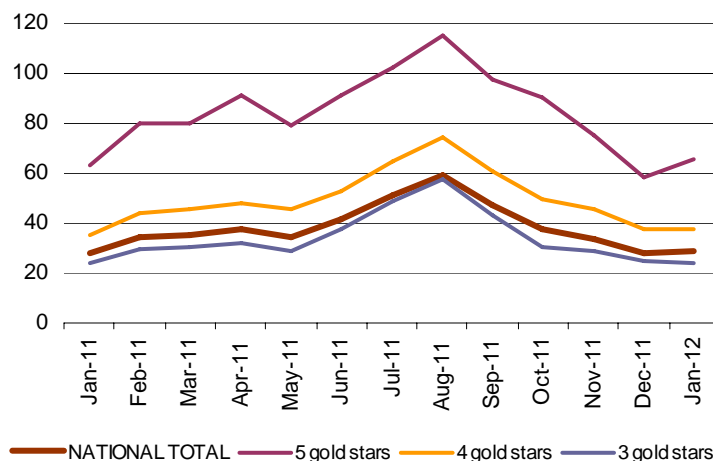
In turn, income per available room (RevPAR), conditioned by the occupancy registered in the hotel establishments, reached 28.9 euros, with an increase of 1.0 euros as compared with January 2011.

By category, the average invoicing was 139.2 euros for five-star hotels, 72.9 euros for four-star hotels and 53.2 euros for three-star hotels. Income per available room for these same categories was 65.6, 37.9 and 24.3 euros, respectively.

ADR



RevPAR



For further information see INEbase-www.ine.es/en/welcome_en.htm All press releases at: www.ine.es/en/prensa/prensa_en.htm

Press Office: Telephone numbers: 91 583 93 63 / 94 08 – Fax: 91 583 90 87 - gprensa@ine.es

Information Area: Telephone number: 91 583 91 00 – Fax: 91 583 91 58 – www.ine.es/infoine/?L=1

Tourist Accommodation Occupancy Survey (Hotels and similar establishments)

January 2012

Provisional data

1. Travellers, overnight stays and average stay by categories of establishment

Category	Number of travellers			Number of overnight stays			Average stay
	Total	Residents in Spain	Residents abroad	Total	Residents in Spain	Residents abroad	
TOTAL	4,036,461	2,396,200	1,640,261	12,612,292	5,083,905	7,528,387	3.12
HOTELS: Golden stars							
Five	267,800	115,974	151,826	927,486	248,725	678,761	3.46
Four	1,893,482	1,034,709	858,773	6,433,086	2,133,967	4,299,119	3.40
Three	1,071,917	659,030	412,888	3,454,794	1,492,351	1,962,443	3.22
Two	310,803	232,153	78,650	679,129	450,451	228,678	2.19
One	117,607	84,560	33,047	260,329	157,479	102,850	2.21
INNS: Silver stars							
Two and three	200,542	146,581	53,961	415,449	294,523	120,925	2.07
One	174,310	123,192	51,117	442,020	306,409	135,611	2.54
Interannual rate	2.60	1.43	4.34	3.46	-0.22	6.11	0.97
Cumulative interannual rate	2.60	1.43	4.34	3.46	-0.22	6.11	0.97

2. Open establishments, capacity, occupancy and employed personnel by categories of establishment

Category	Estimated open establishments	Estimated bedplaces	Level of occupancy			Employed personnel
			Per bedplaces	Per bedplaces at weekend	Per rooms	
TOTAL	12,641	1,080,304	37.44	39.99	42.56	140,683
HOTELS: Golden stars						
Five	227	74,908	39.65	41.15	47.42	20,953
Four	1,615	457,923	44.96	48.14	52.07	66,741
Three	1,892	268,109	41.42	43.39	46.01	31,039
Two	1,532	88,678	24.61	27.94	28.81	7,176
One	997	40,928	20.42	22.61	24.43	3,236
INNS: Silver stars						
Two and three	2,734	78,248	17.09	19.42	20.63	6,257
One	3,643	71,511	19.91	21.14	24.10	5,282
Interannual rate	0.38	0.15	3.34	2.15	3.28	-1.62

3. Travellers, overnight stays, occupancy, average stay and employed personnel

Results by areas and tourist sites

	Travellers		Overnight stays		Level of occupancy			Average stay	Employed personnel
	Residents in Spain	Residents abroad	Residents in Spain	Residents abroad	Per bedplac	Per bedplaces	Per rooms at weekend		

Tourist areas with a greater level of occupancy per month

Isla de Gran Canaria	29,243	146,807	122,330	1,255,727	77.98	78.72	87.85	7.83	10,004
Isla de Tenerife	59,462	199,511	309,999	1,767,274	77.83	77.18	86.91	8.02	15,377
Isla de La Gomera	1,719	5,719	3,346	34,093	69.20	75.40	76.18	5.03	386
Isla de Fuerteventura	6,675	84,042	31,139	794,883	61.45	61.89	76.03	9.11	6,415
Isla de Lanzarote	18,717	60,343	102,274	541,551	60.73	59.77	69.57	8.14	5,113
Val D'Aran	27,018	6,315	91,491	15,301	51.32	57.96	52.31	3.20	890
Costa Blanca	100,077	52,485	419,264	307,235	43.36	46.40	44.89	4.76	5,945
Isla de La Palma	2,683	5,001	9,356	43,083	41.55	40.86	46.09	6.82	441

Tourist areas with a greater number of overnight stays per month *

Barcelona	130,360	258,538	231,792	647,336	40.82	43.16	45.81	2.26	11,549
Costa del Sol	76,153	86,368	195,136	411,450	36.58	37.78	41.73	3.73	6,675
Isla de Mallorca	22,978	32,392	66,458	210,911	33.86	32.59	39.95	5.01	3,344
Costa de Almería	31,885	6,055	117,716	31,591	26.81	30.67	39.24	3.94	1,230
Costa Barcelona	45,521	31,781	71,608	59,387	26.22	21.62	29.92	1.69	1,793
Costa Brava	32,166	26,549	62,963	45,318	21.46	25.08	23.87	1.84	1,618
Pirineo Aragonés	32,924	2,250	96,040	5,269	27.63	32.35	26.57	2.88	1,141
Costa de la Luz de Cádiz	32,110	12,278	60,595	34,218	17.60	20.17	23.26	2.14	1,725

Tourist sites with a greater level of occupancy per month

Arona	5,051	48,844	39,201	440,319	83.33	82.08	90.44	8.90	3,071
Puerto De La Cruz	17,005	25,009	113,647	277,879	83.00	83.80	90.52	9.32	2,558
Adeje	11,779	88,518	73,680	799,090	80.81	79.39	89.67	8.70	6,617
San Bartolomé De Tirajana	11,350	97,538	70,378	890,398	79.69	81.36	89.87	8.82	7,441
Mogán	1,020	32,181	7,276	291,146	78.67	77.41	88.67	8.99	1,723
Palmas De Gran Canaria (Las)	14,400	15,131	39,092	69,377	68.91	68.13	79.78	3.67	716
Tías	2,700	20,062	14,950	176,178	64.28	60.31	69.82	8.40	1,432
Yaiza	8,587	29,281	54,195	259,927	63.27	63.11	72.68	8.30	2,570
Pájara	2,372	51,322	14,707	515,136	62.38	64.35	76.60	9.87	4,228
Naut Aran	12,650	3,629	47,599	9,015	59.86	67.35	59.64	3.48	556

Tourist sites with a greater number of overnight stays per month *

Madrid	327,926	240,856	562,677	555,164	44.71	49.04	54.44	1.97	12,124
Barcelona	123,750	250,805	211,130	629,750	40.77	43.15	45.57	2.25	11,250
Benidorm	54,612	31,806	316,111	232,537	54.28	58.34	55.21	6.35	3,807
Sevilla	58,596	46,892	99,940	99,805	35.09	39.33	40.12	1.89	2,678
Torremolinos	10,368	23,494	23,045	162,645	47.91	47.53	49.24	5.48	1,481
Palma	20,244	21,920	57,127	123,426	39.74	38.73	45.62	4.28	2,112
Granada	59,507	36,304	113,824	57,097	42.92	60.23	45.38	1.78	1,481
Valencia	51,627	30,563	84,541	73,018	30.11	34.20	36.19	1.92	1,986
Teguiuse	4,121	10,741	24,851	103,049	54.61	56.29	67.15	8.61	1,010
Málaga	30,184	22,948	52,974	46,418	34.13	38.11	42.29	1.87	1,113

* Not taken into account those included in the preceding table because they are in the bigger level of occupancy tables too.

4. Travellers, overnight stays and average stay

Results by Autonomous Cities and Communities and provinces

	Number of travellers			Overnight stays			Average stay
	Total	Residents in Spain	Residents abroad	Total	Residents in Spain	Residents abroad	
TOTAL	4,036,461	2,396,200	1,640,261	12,612,292	5,083,905	7,528,387	3.12
Andalucía	672,714	424,073	248,641	1,665,634	901,607	764,027	2.48
Almería	39,813	33,428	6,386	153,320	121,104	32,217	3.85
Cádiz	64,332	46,717	17,616	133,242	86,015	47,228	2.07
Córdoba	53,618	38,624	14,994	92,447	68,070	24,377	1.72
Granada	146,396	98,831	47,564	299,040	205,174	93,865	2.04
Huelva	26,072	19,428	6,644	64,335	41,439	22,896	2.47
Jaén	25,539	22,582	2,956	40,259	36,151	4,108	1.58
Málaga	178,770	87,294	91,476	628,124	209,616	418,508	3.51
Sevilla	138,174	77,169	61,006	254,867	134,038	120,829	1.84
Aragón	121,094	105,585	15,509	252,114	223,766	28,348	2.08
Huesca	41,986	39,388	2,598	113,728	107,526	6,202	2.71
Teruel	15,989	15,140	849	27,926	26,633	1,293	1.75
Zaragoza	63,119	51,057	12,063	110,460	89,607	20,853	1.75
Asturias, Principado de	49,066	45,742	3,324	92,596	84,689	7,907	1.89
Balears, Illes	60,757	27,308	33,449	291,660	78,257	213,403	4.80
Canarias	620,752	119,137	501,615	5,016,667	579,532	4,437,134	8.08
Palmas, Las	345,827	54,635	291,191	2,847,904	255,743	2,592,161	8.24
Santa Cruz de Tenerife	274,925	64,501	210,424	2,168,762	323,789	1,844,973	7.89
Cantabria	35,298	31,178	4,120	63,360	55,213	8,147	1.79
Castilla y León	193,194	169,164	24,030	332,741	291,062	41,679	1.72
Ávila	12,523	11,513	1,010	20,641	19,192	1,449	1.65
Burgos	28,104	22,926	5,178	44,578	37,737	6,841	1.59
León	28,599	26,489	2,110	52,450	48,366	4,084	1.83
Palencia	7,639	6,373	1,267	14,391	12,078	2,314	1.88
Salamanca	38,682	31,093	7,589	67,922	53,495	14,427	1.76
Segovia	18,603	16,642	1,961	29,183	25,944	3,239	1.57
Soria	7,892	7,641	250	15,521	15,040	480	1.97
Valladolid	39,981	36,239	3,742	69,828	62,613	7,215	1.75
Zamora	11,171	10,248	922	18,226	16,595	1,630	1.63
Castilla-La Mancha	105,912	88,554	17,358	168,064	139,391	28,673	1.59
Albacete	17,460	16,104	1,356	27,104	24,639	2,465	1.55
Ciudad Real	19,684	17,778	1,906	33,128	29,852	3,275	1.68
Cuenca	15,210	13,279	1,930	23,147	20,577	2,570	1.52
Guadalajara	13,570	12,412	1,158	22,159	19,875	2,284	1.63
Toledo	39,988	28,981	11,007	62,526	44,447	18,079	1.56
Cataluña	696,580	351,481	345,098	1,485,494	670,309	815,186	2.13
Barcelona	512,479	210,904	301,575	1,106,270	374,476	731,794	2.16
Girona	76,349	48,450	27,899	138,266	89,894	48,372	1.81
Lleida	65,099	56,242	8,857	166,026	146,015	20,011	2.55
Tarragona	42,653	35,885	6,767	74,932	59,923	15,009	1.76
Comunitat Valenciana	323,959	220,131	103,828	1,081,643	660,631	421,012	3.34
Alicante/Alacant	162,130	107,808	54,323	745,493	433,133	312,360	4.60
Castellón/Castelló	28,900	23,209	5,691	74,320	62,187	12,132	2.57
Valencia/València	132,929	89,114	43,815	261,830	165,310	96,520	1.97
Extremadura	63,818	55,631	8,186	103,262	90,648	12,614	1.62
Badajoz	35,115	29,967	5,148	53,869	46,291	7,578	1.53
Cáceres	28,702	25,665	3,038	49,393	44,357	5,036	1.72
Galicia	132,423	114,643	17,780	252,830	212,428	40,402	1.91
Coruña, A	59,230	49,942	9,288	122,899	101,865	21,034	2.07
Lugo	17,155	16,029	1,126	27,950	25,506	2,444	1.63
Ourense	14,242	13,280	962	22,294	20,080	2,214	1.57
Pontevedra	41,797	35,393	6,404	79,688	64,978	14,710	1.91
Madrid, Comunidad de	707,120	441,507	265,613	1,338,786	734,044	604,742	1.89
Murcia, Región de	55,693	44,861	10,832	116,020	89,870	26,151	2.08
Navarra, Comunidad Foral de	36,252	31,787	4,465	64,509	55,192	9,318	1.78
País Vasco	128,841	96,849	31,992	227,886	166,021	61,865	1.77
Araba/Álava	19,118	15,912	3,206	36,032	28,929	7,104	1.88
Bizkaia	66,946	50,688	16,258	119,014	85,791	33,223	1.78
Gipuzkoa	42,777	30,249	12,528	72,840	51,301	21,538	1.70
Rioja, La	24,573	22,317	2,256	40,494	36,228	4,265	1.65
Ceuta	5,178	3,787	1,391	10,323	7,885	2,438	1.99
Melilla	3,237	2,465	772	8,210	7,133	1,077	2.54

5. Establishment, capacity, occupancy and employed personnel

Results by Autonomous Cities and Communities and provinces

	Estimated open establishments	Estimated bedplaces	Level of occupancy			Employed personnel
			Per bedplaces	Per bedplaces at weekends	Per rooms	
TOTAL	12,641	1,080,304	37.44	39.99	42.56	140,683
Andalucía	2,094	189,882	28.19	32.00	33.33	20,986
Almería	143	19,630	25.18	29.08	36.78	1,448
Cádiz	316	24,496	17.52	20.52	22.88	2,667
Córdoba	191	10,908	27.18	34.23	31.29	1,246
Granada	380	28,190	33.89	43.46	36.15	2,948
Huelva	116	13,412	15.46	17.65	20.34	1,047
Jaén	172	8,543	15.18	18.36	19.17	903
Málaga	456	58,361	34.64	36.27	39.44	7,308
Sevilla	320	26,342	31.05	33.93	35.50	3,419
Aragón	750	36,530	22.00	26.68	25.03	3,745
Huesca	278	14,039	25.52	30.16	25.63	1,417
Teruel	190	6,326	14.21	20.49	15.06	674
Zaragoza	281	16,165	22.00	26.08	28.22	1,654
Asturias, Principado de	431	18,893	15.79	18.51	20.01	1,987
Balears, Illes	126	28,892	32.56	31.43	38.73	3,584
Canarias	517	224,653	71.33	71.25	81.66	37,803
Palmas, Las	265	133,358	68.28	68.49	79.64	21,533
Santa Cruz de Tenerife	252	91,294	75.80	75.27	84.53	16,270
Cantabria	252	10,659	19.13	22.30	22.67	1,457
Castilla y León	1,259	55,582	19.26	24.69	23.61	6,922
Ávila	103	4,846	13.72	20.35	14.51	599
Burgos	183	7,976	18.01	17.76	21.28	850
León	243	9,734	17.37	19.35	21.38	1,040
Palencia	79	3,017	15.37	12.08	18.52	330
Salamanca	195	9,688	22.47	31.46	25.97	1,193
Segovia	129	5,519	16.99	22.74	20.56	733
Soria	103	3,369	14.85	15.45	20.03	444
Valladolid	140	8,161	27.50	42.50	36.69	1,205
Zamora	83	3,272	17.94	23.87	23.18	528
Castilla-La Mancha	790	32,427	16.68	22.37	21.07	2,956
Albacete	155	6,121	14.28	14.17	19.44	504
Ciudad Real	182	7,316	14.60	15.64	19.90	696
Cuenca	138	4,876	15.29	19.00	15.42	493
Guadalajara	117	4,400	16.21	27.14	20.63	346
Toledo	197	9,714	20.67	32.13	25.98	916
Cataluña	1,656	150,966	31.62	34.35	36.27	20,560
Barcelona	867	98,818	36.02	36.94	41.33	15,101
Girona	310	20,321	21.88	28.86	23.91	2,241
Lleida	308	17,560	30.14	36.84	31.56	1,948
Tarragona	171	14,267	16.87	21.24	21.95	1,269
Comunitat Valenciana	830	98,409	35.33	38.15	38.21	10,419
Alicante/Alacant	372	57,970	41.33	44.17	42.59	6,318
Castellón/Castelló	136	8,609	27.80	29.07	31.00	783
Valencia/València	321	31,830	26.43	29.64	32.15	3,318
Extremadura	411	18,475	18.00	20.21	21.42	2,376
Badajoz	203	9,514	18.24	18.03	22.74	1,106
Cáceres	208	8,961	17.75	22.53	20.01	1,271
Galicia	1,332	53,200	15.31	17.22	19.23	5,400
Coruña, A	568	23,340	16.96	17.97	21.09	2,183
Lugo	243	7,733	11.64	12.96	14.75	731
Ourense	178	5,433	13.23	14.58	16.14	486
Pontevedra	343	16,693	15.38	19.02	19.73	2,000
Madrid, Comunidad de	1,182	105,121	40.95	44.63	49.39	14,703
Murcia, Región de	160	14,545	25.71	26.57	30.59	1,799
Navarra, Comunidad Foral de	255	10,921	19.01	15.83	24.24	1,299
País Vasco	456	24,152	30.32	34.53	38.86	3,695
Araba/Álava	73	4,430	26.10	28.27	32.57	573
Bizcaia	183	12,306	31.11	35.18	41.25	1,909
Gipuzkoa	199	7,417	31.53	37.20	38.72	1,213
Rioja, La	118	5,356	24.35	32.04	28.23	712
Ceuta	12	790	42.14	39.20	44.08	136
Melilla	11	851	31.11	34.48	45.23	145

HOS (TABLES ANNEX) - JANUARY 2012 (4/9)

Provisional data

6. Percentage distribution of Spanish travellers in each province by Autonomous City and Community of origin

Results by provinces

(Continued)

Provinces	Total	Andalucía	Aragón	Asturias, P. de	Balears, Illes	Canarias	Cantabria	Castilla y León	Castilla-La Mancha	Cataluña
TOTAL	100	16.99	2.88	2.55	1.78	2.84	1.41	4.80	3.18	15.33
Albacete	100	6.95	0.86	1.10	1.11	0.48	0.82	4.03	24.78	6.49
Alicante/Alacant	100	6.15	1.61	1.91	0.83	1.27	0.65	2.26	4.76	8.67
Almería	100	48.46	0.47	0.84	1.96	0.27	0.14	1.26	1.78	11.63
Araba/Álava	100	4.86	5.01	2.74	0.77	0.53	3.02	9.14	1.90	12.22
Asturias	100	2.53	0.99	23.70	0.89	0.50	4.49	10.64	2.34	6.91
Ávila	100	5.75	1.58	2.17	0.30	1.10	1.20	12.66	6.84	2.86
Badajoz	100	30.23	0.74	1.76	0.57	0.75	0.60	4.68	5.55	3.06
Balears, Illes	100	7.83	1.24	1.65	27.28	0.80	0.37	0.64	1.70	25.88
Barcelona	100	7.54	3.23	1.58	3.29	1.97	1.21	2.10	1.76	38.67
Bizkaia	100	3.92	3.05	4.94	1.63	1.17	2.05	5.63	1.96	11.88
Burgos	100	5.56	2.81	2.50	0.66	0.52	3.76	21.90	1.97	9.64
Cáceres	100	17.70	0.94	1.97	0.76	0.57	0.97	6.77	5.89	5.16
Cádiz	100	64.63	0.47	0.57	1.06	0.74	0.41	1.46	1.84	3.94
Cantabria	100	4.94	2.86	10.31	0.93	0.43	16.33	9.18	1.69	6.31
Castellón/Castelló	100	5.04	3.82	1.16	1.88	1.04	0.70	2.28	2.74	26.90
Ciudad Real	100	16.67	1.97	1.08	0.93	0.45	0.69	3.45	16.07	7.11
Córdoba	100	52.37	1.22	0.43	0.79	0.44	0.24	1.83	5.32	5.93
Coruña, A	100	4.06	0.66	4.30	1.82	1.52	1.57	4.88	2.27	7.36
Cuenca	100	5.13	3.49	1.24	0.63	0.76	0.88	5.24	14.20	6.01
Gipuzkoa	100	4.11	3.91	4.90	1.38	0.77	2.11	5.31	1.70	13.58
Girona	100	1.67	1.09	0.61	1.61	0.57	0.14	0.88	0.36	81.48
Granada	100	54.12	0.64	0.40	1.21	0.50	0.65	1.50	2.72	4.68
Guadalajara	100	6.44	2.40	1.18	0.50	0.40	1.65	5.95	17.77	9.63
Huelva	100	66.21	0.55	0.28	0.53	2.83	0.26	2.02	1.85	3.13
Huesca	100	1.82	26.44	1.27	2.33	0.58	1.26	4.53	2.55	14.96
Jaén	100	51.21	0.92	0.28	2.50	0.67	0.14	1.93	3.82	4.18
León	100	2.84	1.29	11.62	1.11	0.48	2.57	26.96	1.26	4.76
Lleida	100	2.36	2.32	1.73	0.65	0.43	1.26	3.53	0.97	54.18
Lugo	100	1.38	0.41	8.41	0.94	0.85	1.62	5.44	2.56	3.38
Madrid	100	15.66	2.52	2.84	2.03	3.27	1.62	5.13	3.20	11.32
Málaga	100	58.64	1.40	0.37	0.67	1.63	0.41	1.17	1.73	7.16
Murcia	100	13.01	1.15	0.84	0.95	0.64	0.48	2.20	4.48	8.42
Navarra	100	4.90	6.23	3.07	0.83	0.89	1.49	5.10	2.10	15.76
Ourense	100	1.40	0.43	3.98	0.07	0.55	0.32	5.54	0.90	3.31
Palencia	100	2.50	2.20	5.81	1.58	1.09	6.82	25.07	2.29	3.78
Palmas, Las	100	8.37	0.89	0.71	1.24	35.94	0.64	1.55	0.57	7.56
Pontevedra	100	3.33	0.86	3.67	0.66	0.73	1.38	6.99	1.59	6.33
Rioja, La	100	3.32	8.19	2.43	1.23	0.22	3.35	6.75	3.41	15.61
Salamanca	100	8.93	1.78	2.71	1.72	1.30	1.71	17.56	4.93	3.57
S. C. Tenerife	100	10.45	0.77	0.91	0.60	24.29	0.40	2.96	0.44	3.29
Segovia	100	6.17	1.11	2.58	0.98	0.56	1.58	11.40	6.33	3.63
Sevilla	100	46.76	1.52	0.95	0.66	1.55	0.89	2.56	2.22	7.60
Soria	100	1.46	9.56	1.12	0.32	0.65	1.29	15.55	4.08	7.48
Tarragona	100	3.39	4.18	0.36	1.07	0.24	0.52	0.59	1.02	69.49
Teruel	100	1.94	14.92	0.58	1.01	0.48	0.28	1.48	3.29	15.77
Toledo	100	12.80	2.51	1.09	1.83	0.71	0.70	5.27	14.95	6.57
Valencia/València	100	7.23	2.67	0.98	2.46	1.04	0.58	2.39	3.07	15.16
Valladolid	100	8.68	2.22	3.75	0.62	0.94	2.24	21.14	3.19	6.09
Zamora	100	6.94	1.91	6.27	0.63	0.58	2.36	22.70	3.22	4.44
Zaragoza	100	5.59	16.43	1.64	0.79	1.31	1.70	5.41	3.50	19.55
Ceuta	100	55.53	0.40	0.40	0.80	0.80	1.07	0.27	1.47	1.74
Melilla	100	51.82	0.28	1.10	0.56	1.56	0.28	2.42	1.26	4.63

6. Percentage distribution of Spanish travellers in each province by Autonomous City and Community of origin

Results by provinces

(Conclusion)

Provinces	Comunitat Valenciana	Extremadura	Galicia	Madrid, C. de	Murcia, Región de	Navarra, C. Foral de	País Vasco	Rioja, La	Ceuta	Melilla
TOTAL	9.35	1.66	5.88	20.78	2.46	1.32	5.53	0.75	0.24	0.25
Albacete	22.60	1.84	2.11	16.19	6.38	0.72	3.11	0.25	0.08	0.11
Alicante/Alacant	43.65	0.56	3.58	15.50	4.78	0.58	2.49	0.69	0.04	0.04
Almería	9.88	0.61	0.68	7.78	11.51	0.76	1.27	0.26	0.12	0.32
Araba/Álava	4.90	1.10	3.48	19.16	0.70	2.68	26.28	1.45	0.05	-
Asturias	2.00	0.59	12.76	22.09	0.35	1.01	7.66	0.50	0.03	0.02
Ávila	3.84	2.85	3.42	51.33	1.06	0.54	2.08	0.37	-	0.04
Badajoz	3.00	19.40	2.24	21.62	1.69	0.80	2.20	0.88	0.16	0.07
Balears, Illes	9.14	0.26	4.10	16.19	0.72	0.25	1.67	0.16	0.03	0.07
Barcelona	7.58	0.83	2.51	16.25	1.18	1.37	7.41	0.84	0.19	0.48
Bizkaia	3.55	0.91	3.97	19.97	0.63	4.26	28.63	1.79	0.05	0.02
Burgos	4.67	1.10	6.80	24.78	1.12	1.42	9.52	1.22	0.05	-
Cáceres	3.61	12.61	2.83	36.11	0.76	0.73	1.76	0.44	0.38	0.04
Cádiz	2.42	1.74	1.64	14.37	0.71	0.45	1.46	0.15	1.44	0.50
Cantabria	2.71	0.48	5.44	17.10	0.45	1.73	16.80	2.25	0.07	-
Castellón/Castelló	35.56	0.67	1.83	10.35	1.67	0.40	3.03	0.70	0.02	0.21
Ciudad Real	8.80	5.98	1.65	26.29	4.23	0.54	3.70	0.14	0.15	0.09
Córdoba	4.75	2.92	0.69	18.41	2.28	0.52	1.20	0.33	0.12	0.20
Coruña, A	2.65	0.83	49.55	13.44	0.63	0.70	3.46	0.23	0.08	0.00
Cuenca	15.63	1.13	4.97	34.88	2.91	0.66	1.33	0.26	0.57	0.07
Gipuzkoa	4.22	0.69	4.14	19.05	0.54	4.29	27.78	1.49	0.03	0.02
Girona	3.26	0.25	2.20	3.93	0.63	0.13	1.06	0.09	-	0.03
Granada	7.22	1.26	1.40	16.06	5.54	0.43	0.82	0.20	0.30	0.35
Guadalajara	6.52	0.97	2.69	37.30	2.20	1.20	2.65	0.54	-	-
Huelva	3.54	2.92	0.74	12.69	0.92	0.18	1.05	-	0.20	0.10
Huesca	5.02	0.09	1.54	24.25	0.39	3.40	8.48	1.09	-	-
Jaén	7.89	0.62	0.76	17.74	4.50	0.18	2.08	0.20	0.24	0.15
León	2.25	1.65	16.96	18.47	0.47	1.15	5.35	0.76	0.05	-
Lleida	4.68	0.34	2.86	15.63	0.29	0.44	6.98	1.29	0.05	0.01
Lugo	1.30	0.45	59.99	9.40	0.32	0.70	2.51	0.29	0.06	-
Madrid	8.42	2.28	4.30	26.43	2.72	1.53	5.30	0.94	0.25	0.23
Málaga	3.55	0.79	1.92	14.86	1.31	1.00	1.11	0.12	1.14	1.02
Murcia	21.14	0.46	1.16	16.48	25.76	0.41	1.72	0.49	0.17	0.03
Navarra	6.77	0.40	2.56	20.59	1.21	14.05	12.51	1.44	0.08	0.03
Ourense	1.20	0.41	67.61	10.26	0.52	0.29	3.01	0.18	-	-
Palencia	3.63	1.10	10.07	19.67	1.12	0.70	10.71	1.86	-	-
Palmas, Las	1.23	0.22	2.04	30.93	0.42	0.75	6.56	0.16	0.01	0.21
Pontevedra	1.85	0.40	53.04	15.08	0.39	0.33	2.99	0.34	0.04	-
Rioja, La	5.47	0.45	3.18	16.16	0.83	5.62	18.73	5.00	0.04	-
Salamanca	3.40	4.13	5.39	33.83	0.71	0.82	6.41	0.93	0.16	-
S. C. Tenerife	0.90	0.18	1.76	48.09	0.21	0.23	3.79	0.14	0.52	0.09
Segovia	5.53	1.36	4.11	49.31	1.66	0.72	2.24	0.68	0.05	-
Sevilla	5.13	2.96	2.15	18.94	1.62	0.70	2.43	0.58	0.57	0.23
Soria	2.89	0.62	2.51	37.07	0.39	1.88	11.00	2.13	-	-
Tarragona	9.42	0.25	0.98	4.46	0.94	0.60	1.51	0.52	0.06	0.39
Teruel	47.22	0.36	1.00	7.73	0.97	0.67	1.51	0.76	-	0.03
Toledo	10.05	3.29	2.50	29.37	2.18	0.70	4.71	0.58	0.13	0.06
Valencia/València	30.62	0.79	4.37	20.77	3.42	0.71	2.92	0.49	0.15	0.19
Valladolid	4.81	3.39	7.73	22.45	1.31	0.67	7.15	1.32	0.22	2.08
Zamora	3.14	1.83	17.75	20.94	0.29	1.65	4.55	0.50	0.08	0.21
Zaragoza	8.88	0.94	2.92	18.62	2.04	2.65	6.30	1.55	0.11	0.04
Ceuta	2.81	0.38	0.80	19.52	0.54	-	0.40	-	9.17	3.88
Melilla	1.91	3.79	1.76	11.03	1.97	0.56	1.26	0.14	1.16	12.50

7. Percentage distribution of overnight stays in each province by Autonomous City and Community of origin

Results by provinces

(Continued)

Provinces	Total	Andalucía	Aragón	Asturias, P. de	Balears, Illes	Canarias	Cantabria	Castilla y León	Castilla-La Mancha	Cataluña
TOTAL	100	16.25	2.87	2.52	1.98	3.43	1.35	4.67	3.00	14.32
Albacete	100	8.05	0.93	0.88	1.89	0.40	0.71	5.21	20.87	6.78
Alicante/Alacant	100	7.55	2.72	3.07	0.84	1.63	1.67	4.31	5.53	10.06
Almería	100	37.55	0.44	2.84	3.30	0.24	0.12	1.67	1.86	16.52
Araba/Álava	100	6.40	4.59	2.34	0.87	0.51	3.02	10.30	2.17	11.28
Asturias	100	3.27	0.89	19.09	2.67	0.52	4.01	11.10	1.88	8.75
Ávila	100	6.21	1.42	1.83	0.28	1.07	1.52	12.02	5.74	3.03
Badajoz	100	31.96	0.73	2.19	1.53	0.77	0.40	4.32	6.14	3.17
Balears, Illes	100	7.41	1.09	1.79	20.45	0.68	0.19	4.85	0.81	24.95
Barcelona	100	9.28	3.32	1.48	3.04	2.06	1.00	2.29	1.75	36.71
Bizkaia	100	5.23	3.17	5.12	2.08	1.27	1.80	5.75	2.12	12.17
Burgos	100	7.66	2.20	2.50	2.62	0.36	3.26	21.53	1.44	9.41
Cáceres	100	15.59	0.72	1.68	1.00	0.49	0.80	6.04	5.21	10.01
Cádiz	100	56.04	0.84	0.56	1.26	0.69	0.54	2.34	2.80	5.36
Cantabria	100	9.67	3.00	9.00	0.94	0.39	13.44	8.84	1.60	7.69
Castellón/Castelló	100	5.17	4.58	1.48	3.50	3.52	0.46	2.30	1.77	30.36
Ciudad Real	100	16.91	2.28	1.50	1.26	0.41	0.84	4.09	13.92	6.76
Córdoba	100	50.43	1.32	0.63	0.70	0.47	0.31	1.88	5.61	6.77
Coruña, A	100	4.01	1.53	3.72	2.11	1.42	1.16	4.72	1.45	8.39
Cuenca	100	4.46	2.95	0.88	0.38	0.79	0.58	5.16	16.37	5.39
Gipuzkoa	100	4.69	3.73	4.75	1.66	1.07	2.33	4.77	2.28	14.38
Girona	100	2.43	1.13	3.95	1.21	0.40	0.13	1.98	0.32	67.20
Granada	100	47.37	0.71	0.59	1.45	0.67	1.43	1.64	2.96	5.06
Guadalajara	100	7.41	1.93	0.98	0.51	0.32	1.29	6.03	20.53	8.91
Huelva	100	55.56	0.52	0.21	0.51	4.39	0.26	1.35	1.99	7.38
Huesca	100	2.08	22.47	1.85	3.97	0.64	0.96	4.95	2.60	11.09
Jaén	100	44.44	0.72	0.19	4.34	0.65	0.19	1.75	3.86	4.77
León	100	2.85	1.06	9.92	1.04	0.54	1.92	34.00	1.42	4.04
Lleida	100	2.30	1.79	2.81	1.13	0.55	1.43	3.83	1.41	42.35
Lugo	100	1.59	0.36	7.86	0.88	0.70	1.36	6.05	2.74	3.13
Madrid	100	16.17	2.47	2.95	2.18	3.85	1.66	4.94	3.30	11.74
Málaga	100	53.41	3.00	0.48	0.47	1.49	0.35	1.51	2.35	7.55
Murcia	100	14.35	1.41	1.45	0.93	0.66	0.44	2.13	4.66	10.63
Navarra	100	5.44	6.88	2.72	0.81	1.38	1.21	5.63	2.22	15.28
Ourense	100	1.73	0.31	6.20	0.05	0.56	0.36	7.01	1.15	3.51
Palencia	100	3.49	2.00	5.21	1.59	1.78	5.79	25.69	2.92	3.07
Palmas, Las	100	10.84	1.19	1.13	1.33	22.26	0.75	1.68	0.55	8.13
Pontevedra	100	3.34	0.99	4.13	0.76	0.65	1.08	6.64	1.48	6.03
Rioja, La	100	3.70	7.66	2.06	1.15	0.37	3.34	7.15	3.25	15.20
Salamanca	100	13.99	1.85	2.69	2.36	1.54	1.41	15.77	3.98	3.75
S. C. Tenerife	100	9.14	0.79	0.96	0.52	14.16	0.42	2.96	0.32	3.15
Segovia	100	6.72	1.29	2.11	1.13	0.83	1.49	12.49	5.72	3.78
Sevilla	100	43.33	1.62	1.01	0.84	1.56	0.90	2.80	2.40	8.77
Soria	100	1.79	12.24	1.24	0.32	0.79	0.99	17.14	4.47	5.63
Tarragona	100	3.74	4.70	0.46	1.54	0.31	0.75	0.59	1.44	65.28
Teruel	100	2.19	21.36	0.89	0.77	0.29	0.30	1.06	2.98	15.66
Toledo	100	12.56	2.29	1.31	3.94	0.67	0.89	5.08	13.84	7.91
Valencia/València	100	8.06	2.21	1.61	3.77	1.22	2.18	2.65	3.04	14.49
Valladolid	100	9.75	2.36	3.12	1.31	1.87	1.88	18.00	3.15	5.56
Zamora	100	11.93	3.18	5.63	0.77	0.60	1.88	20.70	2.44	5.14
Zaragoza	100	6.24	14.26	1.67	0.95	1.46	1.94	5.53	3.52	18.57
Ceuta	100	56.83	0.32	0.19	0.38	0.38	0.51	0.24	1.79	1.22
Melilla	100	55.98	0.09	0.57	0.69	1.34	0.09	1.76	2.02	3.69

7. Percentage distribution of overnight stays in each province by Autonomous City and Community of origin

Results by provinces

(Conclusion)

Provinces	Comunitat Valenciana	Extremadura	Galicia	Madrid, C. de	Murcia, Región de	Navarra, C. Foral de	País Vasco	Rioja, La	Ceuta	Melilla
TOTAL	8.85	1.42	6.15	22.93	2.19	1.27	5.65	0.67	0.23	0.26
Albacete	22.73	1.69	2.73	15.87	6.69	1.02	3.18	0.26	0.05	0.07
Alicante/Alacant	26.11	0.60	6.74	18.55	2.53	0.92	6.16	0.97	0.02	0.01
Almería	12.14	0.35	0.33	8.87	10.52	1.36	1.44	0.14	0.03	0.27
Araba/Álava	5.17	1.10	4.20	19.57	0.87	2.14	24.44	1.02	0.03	-
Asturias	4.44	0.52	11.47	22.26	0.33	0.97	7.28	0.52	0.03	0.01
Ávila	4.06	4.07	3.52	51.03	0.97	0.48	2.41	0.31	-	0.02
Badajoz	2.76	18.16	2.06	19.97	1.97	0.74	2.14	0.75	0.12	0.11
Balears, Illes	8.49	0.16	8.22	18.55	0.60	0.11	1.37	0.15	0.01	0.09
Barcelona	7.40	1.24	2.60	16.66	1.20	1.25	7.36	0.79	0.20	0.37
Bizkaia	4.00	0.87	4.68	21.12	0.75	3.25	25.08	1.48	0.04	0.02
Burgos	5.12	1.06	7.50	21.25	1.77	1.05	10.26	0.99	0.03	-
Cáceres	8.11	10.25	5.08	31.12	0.68	0.76	1.79	0.30	0.33	0.05
Cádiz	3.16	1.93	2.33	17.16	1.07	0.40	1.95	0.12	1.01	0.43
Cantabria	2.66	0.37	5.08	19.38	0.92	1.59	12.65	2.68	0.07	-
Castellón/Castelló	22.69	0.52	5.09	11.29	1.24	0.38	5.23	0.33	0.01	0.08
Ciudad Real	8.70	8.10	2.98	23.93	4.08	0.46	3.56	0.09	0.09	0.05
Córdoba	5.58	2.56	0.71	17.95	2.42	0.78	1.26	0.26	0.15	0.19
Coruña, A	2.10	0.90	51.55	12.50	0.60	0.75	2.78	0.19	0.07	0.05
Cuenca	16.93	0.75	3.05	32.09	6.68	0.52	1.21	1.36	0.38	0.08
Gipuzkoa	4.57	0.79	4.05	19.16	0.59	3.46	26.22	1.45	0.04	0.01
Girona	4.19	0.16	3.21	11.32	0.42	0.13	1.77	0.06	-	0.02
Granada	8.78	1.31	2.64	17.43	5.46	0.77	0.99	0.20	0.28	0.26
Guadalajara	6.50	1.55	2.82	34.25	3.19	1.02	2.27	0.49	-	-
Huelva	5.37	2.06	0.54	17.69	0.61	0.35	0.99	-	0.17	0.04
Huesca	5.91	0.32	3.09	29.05	0.44	2.41	7.41	0.74	-	-
Jaén	9.40	0.55	1.04	20.52	4.30	0.44	2.33	0.12	0.29	0.09
León	2.19	2.16	13.93	16.67	0.44	1.03	5.87	0.76	0.17	-
Lleida	5.70	0.26	3.02	24.32	0.26	0.50	6.92	1.38	0.04	0.01
Lugo	0.98	0.60	61.01	9.40	0.38	0.66	2.02	0.24	0.04	-
Madrid	8.58	2.20	4.73	24.40	2.68	1.55	5.18	0.86	0.25	0.32
Málaga	2.82	0.68	5.68	13.59	0.94	2.34	1.32	0.28	0.78	0.94
Murcia	19.78	0.61	1.36	18.88	17.90	0.55	3.66	0.38	0.19	0.02
Navarra	7.03	0.28	2.70	19.18	1.17	14.80	11.56	1.54	0.06	0.09
Ourense	1.23	0.45	63.58	10.07	0.68	0.23	2.77	0.11	-	-
Palencia	3.47	1.58	11.90	18.95	1.67	0.46	8.78	1.66	-	-
Palmas, Las	1.02	0.38	2.54	37.28	0.34	1.07	9.07	0.16	0.01	0.28
Pontevedra	1.61	0.35	54.15	14.99	0.56	0.32	2.62	0.28	0.02	-
Rioja, La	6.07	0.54	3.95	17.73	1.12	4.71	16.98	5.01	0.03	-
Salamanca	3.50	4.79	6.39	29.52	0.65	0.69	6.01	0.95	0.16	-
S. C. Tenerife	0.97	0.19	2.10	57.83	0.17	0.26	5.04	0.17	0.80	0.06
Segovia	6.96	1.78	3.77	45.67	2.37	0.88	2.34	0.63	0.03	-
Sevilla	5.78	2.68	2.16	19.45	1.63	0.78	3.00	0.55	0.58	0.17
Soria	2.98	0.64	3.11	30.95	0.25	1.58	14.11	1.77	-	-
Tarragona	10.01	0.24	1.00	5.38	0.74	0.88	1.97	0.58	0.07	0.32
Teruel	41.67	0.27	1.52	7.53	1.02	0.54	1.38	0.54	-	0.02
Toledo	10.49	3.04	2.48	26.99	2.27	0.53	5.01	0.55	0.14	0.04
Valencia/València	24.97	0.83	4.21	21.89	3.09	0.77	4.09	0.41	0.11	0.40
Valladolid	5.16	4.44	7.46	19.47	1.34	0.54	8.28	1.19	0.29	4.81
Zamora	2.95	1.91	14.84	21.57	0.25	1.24	4.41	0.38	0.05	0.12
Zaragoza	10.25	1.05	3.26	17.56	3.52	2.57	6.13	1.37	0.08	0.04
Ceuta	2.11	0.59	1.41	23.08	0.84	-	0.39	-	7.48	2.24
Melilla	1.18	1.62	1.38	16.29	3.40	0.19	1.31	0.10	0.63	7.66

8. Travellers, overnight stays and average stay by country of residence

Results by countries

Countries	Number of travellers		Overnight stays	
	Total	%	Total	%
TOTAL	4,036,461	100.00	12,612,292	100.00
Residents in Spain	2,396,200	59.36	5,083,905	40.31
Residents abroad	1,640,261	40.64	7,528,387	59.69
Total Residents abroad	1,640,261	100.00	7,528,387	100.00
Total Residents in U.E. (without Spain)	1,126,725	68.69	6,145,866	81.64
- Germany	260,598	15.89	2,055,875	27.31
- Austria	12,390	0.76	76,043	1.01
- Belgium	45,348	2.76	266,313	3.54
- Denmark	23,801	1.45	148,077	1.97
- Finland	19,896	1.21	128,655	1.71
- France	140,065	8.54	359,522	4.78
- Greece	7,247	0.44	23,190	0.31
- Ireland	23,634	1.44	123,861	1.65
- Italy	128,319	7.82	462,385	6.14
- Luxembourg	2,707	0.17	20,048	0.27
- Netherlands	56,147	3.42	282,198	3.75
- Poland	17,379	1.06	84,036	1.12
- Portugal	51,881	3.16	105,817	1.41
- United Kingdom	245,891	14.99	1,513,426	20.10
- Czech Republic	4,517	0.28	18,606	0.25
- Sweden	56,811	3.46	372,716	4.95
- Rest of UE*	30,094	1.83	105,097	1.40
Norway	25,091	1.53	167,150	2.22
Russia	39,265	2.39	162,715	2.16
Switzerland	20,298	1.24	89,596	1.19
Rest of Europe	41,170	2.51	117,618	1.56
Japan	43,721	2.67	70,741	0.94
United States of America	65,227	3.98	154,702	2.05
Rest of America	122,720	7.48	298,294	3.96
African's countries	30,477	1.86	62,970	0.84
Rest of the world	125,569	7.66	258,736	3.44

*Countries included in the Rest of UE: Bulgaria, Cyprus, Slovakia, Slovenia, Estonia, Hungary, Latvia, Lithuania, Malta and Romania

Hotel Price Index (HPI). 2008 Base

January 2012

Provisional data

General Autonomous Cities and Communities and national indices

	Index	Interannual variation rate
TOTAL	90.6	0.3
Andalucía	91.3	-1.3
Aragón	79.8	-7.5
Asturias, Principado de	88.1	-3.9
Balears, Illes	97.5	-1.4
Canarias	97.8	5.6
Cantabria	93.8	1.9
Castilla y León	92.6	-3.3
Castilla - La Mancha	91.3	-2.1
Cataluña	83.5	-1.5
Comunitat Valenciana	89.1	-2.6
Extremadura	85.5	-4.4
Galicia	94.2	-4.6
Madrid, Comunidad de	81.9	-3.7
Murcia, Región de	80.4	-4.6
Navarra, Comunidad Foral de	85.4	-3.4
País Vasco	85.9	-3.7
Rioja, La	90.2	-2.5
Ceuta	105.9	1.4
Melilla	84.7	-1.3

National General Index and breakdown by categories

	Index	Interannual variation rate
TOTAL	90.6	0.3
HOTELS: Gold stars		
Five	86.4	-0.7
Fourth	90.2	1.6
Three	91.3	-1.8
Two	92.0	-2.5
One	96.8	1.6
HOSTALS: Silver stars		
Three and two	93.7	0.6
One	98.6	0.8

Indicators on the Profitability of the Hotel Sector

January 2012

Provisional data

ADR and RevPAR for Autonomous Cities and Communities and national indices

	ADR (in euros)	Variation Rate variation	RevPar (in euros)	Variation Rate variation
TOTAL	68.3	0.4	28.9	3.5
Andalucía	58.6	0.7	19.6	6.9
Aragón	54.9	-13.9	13.8	-20.9
Asturias, Principado de	52.7	-6.3	10.3	-5.9
Balears, Illes	55.3	-3.5	20.8	-6.2
Canarias	76.0	4.6	62.1	12.8
Cantabria	61.5	5.6	13.6	6.9
Castilla y León	52.9	-3.4	12.5	-1.5
Castilla - La Mancha	57.8	2.3	12.3	-0.6
Cataluña	78.6	-0.7	28.1	-1.6
Comunitat Valenciana	49.4	-4.2	18.9	2.8
Extremadura	53.1	-0.4	11.5	0.1
Galicia	47.6	-3.9	8.7	-16.2
Madrid, Comunidad de	78.3	-4.6	38.6	-5.7
Murcia, Región de	54.7	-3.6	16.8	-7.4
Navarra, Comunidad Foral de	58.6	-4.3	13.9	-3.6
País Vasco	62.0	-3.1	24.2	4.9
Rioja, La	59.6	-2.9	16.8	-13.8
Ceuta	70.4	7.3	31.3	-0.4
Melilla	60.3	2.7	27.3	11.9

National ADR and RevPar and breakdown by categories

	ADR (in euros)	Variation Rate interannual	RevPar (in euros)	Variation Rate interannual
TOTAL	68.3	0.4	28.9	3.5
HOTELS: Gold stars				
Five	139.2	-1.5	65.6	4.4
Four	72.9	0.4	37.9	7.0
Three	53.2	-2.1	24.3	0.1
Two	48.9	-0.6	14.0	-7.8
One	46.9	-1.7	11.2	-6.4
GUESTHOUSES: Silver stars				
Three and two	41.6	3.9	8.5	-5.9
One	35.1	2.3	7.9	0.1

Due to the updating in the establishments directory carried out in Extremadura in March 2011, the data to be published for Extremadura and the national total from those dates are not directly comparable with the data published last year, therefore, data link coefficients have been calculated to allow the comparison of data between different years. These coefficients are available in INE website (www.ine.es)