

Hotel Tourism Short-Term Trends (HOS/HPI/ADR/REVPAR)
 April 2011. *Provisional data*

Overnight stays in hotel establishments increase 11.9%¹ in April, as compared with the same month in 2010

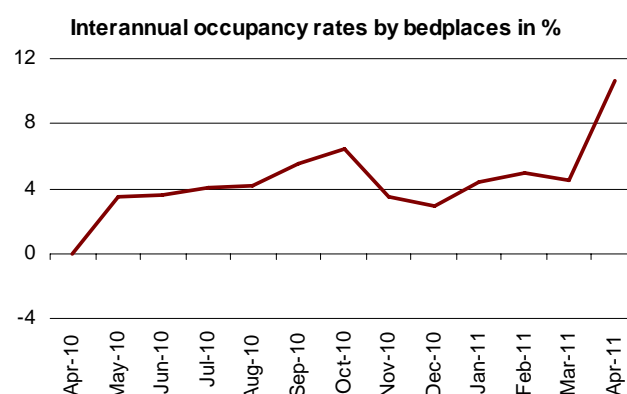
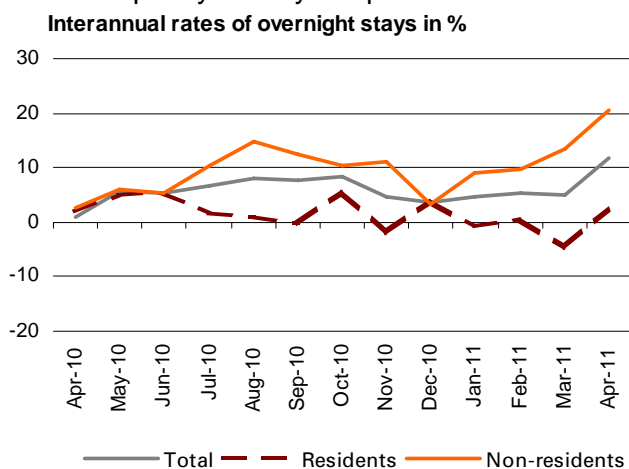
Hotels earn 37.8 euros per available room and invoice an average of 67.2 euros per occupied room

During the month of April, 22.6 million overnight stays were recorded in hotel establishments, indicating an 11.9% increase as compared with the same month in 2010. Overnight stays increased 2.6% for residents, whereas non-residents experienced an increase of 20.6%. The average stay increased 3.4% as compared with April 2010, standing at 3.1 nights per guest. **The average stay increased 7.2% during the first four months of 2011** as compared with the same period the previous year.

On analysis of the **March-April** aggregate period, given that this year, Easter Week was celebrated in the middle of April, and that in 2010, it took between the months of March and April, an 8.7% increase in overnight stays was recorded, as compared with the same period in 2010. Overnight stays by residents decreased 0.6%, and those by non-residents increased 17.3%.

In turn, the **Hotel Price Index (HPI) registered a 0.1% decrease in April**, this rate being 3.2 points higher than that registered in the same month of 2010. Regarding the indicators on the profitability of the hotel sector, invoicing per occupied room reached an average value of 67.2 euros (1.1 euro more than in April 2010), and income per available room stood at 37.8 euros (3.9 euros more than one year ago).

In terms of occupancy, 53.0% of the available bedplaces were filled in April, indicating a 10.6% increase as compared with the same month the previous year. The weekend occupancy rate by bedplaces stood at 58.0%, with an interannual increase of 4.2%.



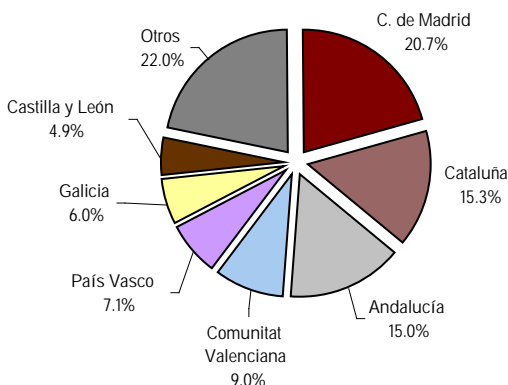
¹Due to the extraordinary update made in the in the directory of hotel establishments in Canarias, Comunidad Foral de Navarra and Extremadura, the data published for those Autonomous Communities and the national total cannot be directly compared to those published in previous years. The coefficients are published monthly on the INE website in the section dedicated to each statistical operation, in a specific section entitled linking coefficients.

Overnight stays of guests resident abroad

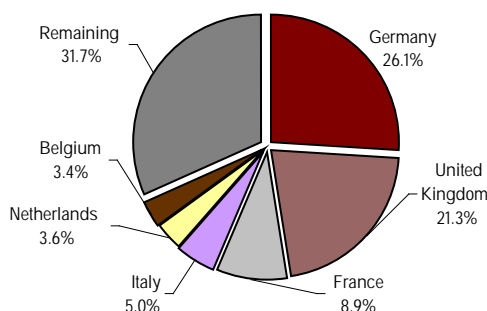
Guests from Germany and the United Kingdom made more than 6.0 million overnight stays in April. The German market experienced a 23.6% interannual increase in overnight stays, while the British market registered a 16.5% increase.

Overnight stays of guests from France, Italy and Netherlands (the following countries of origin) registered interannual rates of 6.7%, 12.3% and 21.8%, respectively.

Overnight stays of guests resident in Spain by Autonomous Community of origin in %



Overnight stays of guests resident abroad by country of origin in %

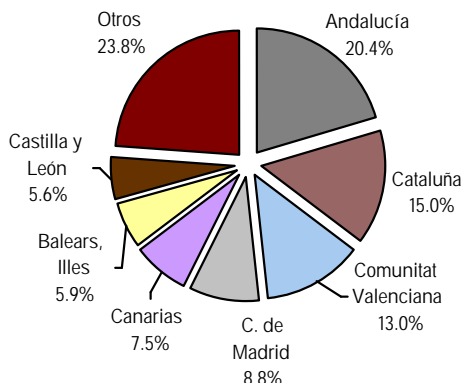


Main destinations

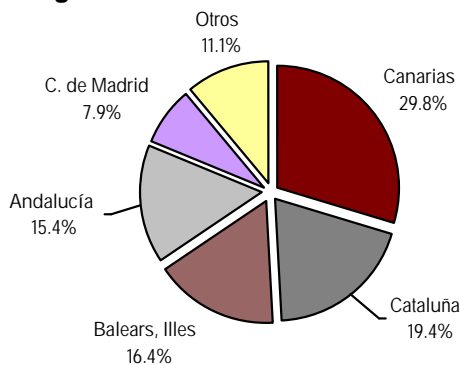
The main destination chosen by non-residents was Canarias. In this Autonomous Community, overnight stays by foreign nationals increased 25.2%. It was followed by Cataluña, with an interannual rate of 13.9%, and Illes Balears, with an increase of 30.2%.

Andalucía, Cataluña and Comunitat Valenciana were the main destinations of guests resident in Spain, with interannual rates for overnight stays of 3.3%, 2.7% and 2.2%, respectively.

Distribution of overnight stays of guests resident in Spain in %



Distribution of overnight stays of guests resident abroad in %



Results by Autonomous Community, tourist area and tourist site

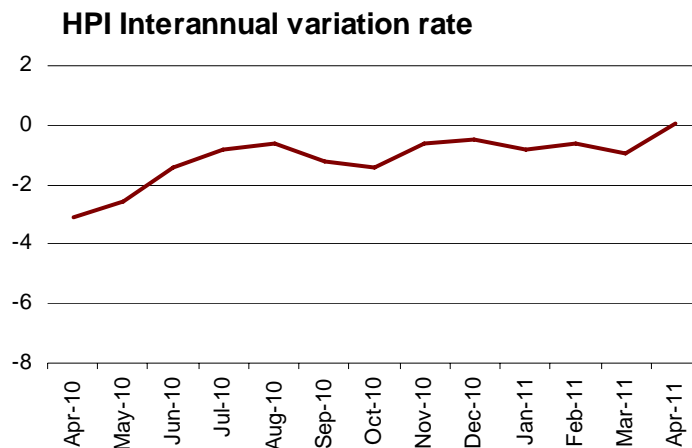
During the month of April, Canarias was the Autonomous Community with the highest occupancy rate by bedplaces (70.2%), followed by Illes Balears (65.9%) and Comunidad de Madrid (58.2%).

The tourist areas with the highest occupancy and overnight stay rates were located on the islands and the coasts. **Las Palmas** recorded both the highest occupancy rate by bedplaces (72.2%), while **Madrid** reached the highest weekend occupancy rate by bedplaces (77.1%). Mallorca registered more than 2.4 million overnight stays in April.

The tourist sites with the highest number of overnight stays were Madrid, Barcelona and Benidorm. La Oliva reached the highest occupancy rate by bedplaces (80.7%), and the highest weekend occupancy (84.2%).

Evolution of the Hotel Price Index

The interannual rate of the HPI stood at 0.1% in April, this rate being 1.0 points higher than that obtained last month, and 3.2 points higher than that registered one year ago.



HPI by Autonomous Community

The four Communities (Cataluña, Andalucía, Canarias and Comunidad de Madrid) that carried 66.1% of the total weight of the HPI in the month of April, showed uneven behaviour, as compared with March 2011.

Cataluña, which carried the greatest load in the weighting structure this month, presented an interannual rate of -0.2%, that is, 1.5 points higher than that estimated in March. Hotel prices experienced a decrease of 2.4% in Andalucía, as compared with the -3.5% registered the previous month. Canarias showed an interannual rate of 4.7%, as compared with the 1.5% observed last month. In Comunidad de Madrid, the interannual rate was -1.5%, that is, 0.7 points lower than that obtained in the month of March.

HPI by category

Hotel prices decreased in three- and two-silver-star hotels (2.4%), in four-gold-stars hotels (0.3%) and three-gold-star hotels (0.1%) in April.

In turn, two-gold-star, one-gold-star, five-gold-star and one-silver-star hotels recorded interannual increases of 2.0%, 1.7%, 1.3% and 0.5%, respectively.

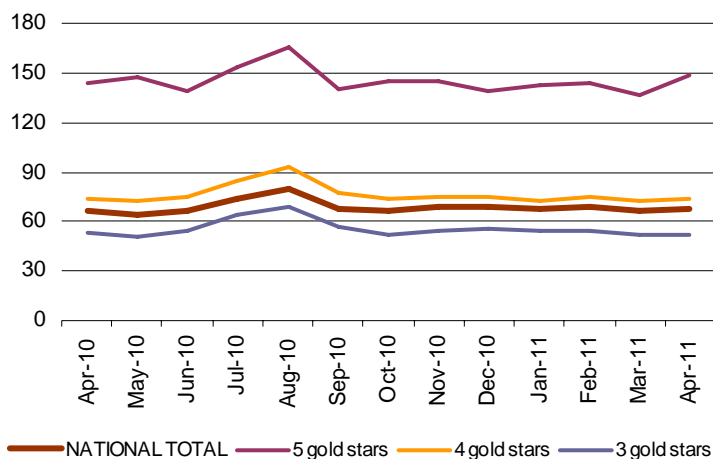
Indicators on the Profitability of the Hotel Sector

The average invoicing by hotels per occupied room (ADR) in April was 67.2 euros, indicating an increase of 1.1 euros as compared with the same month in 2010.

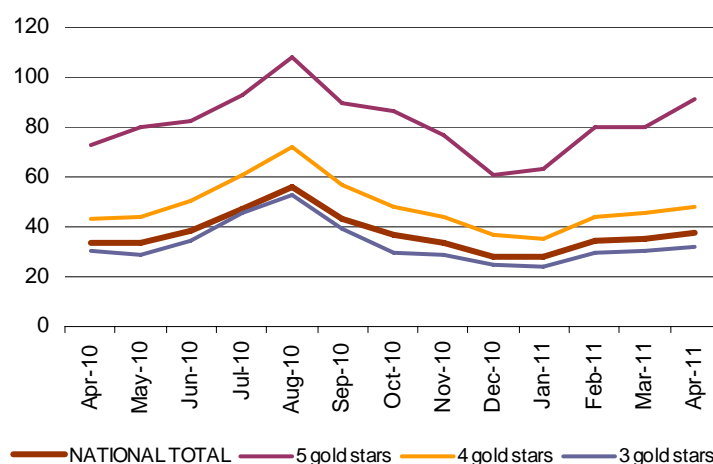
In turn, income per available room (RevPAR), conditioned by the occupancy registered in the hotel establishments, reached 37.8 euros, with an increase of 3.9 euros as compared with April 2010.

By category, the average invoicing was 148.8 euros for five-star hotels, 73.6 euros for four-star hotels and 52.1 euros for three-star hotels. Income per available room for these same categories was 91.1, 48.4 and 31.8 euros, respectively.

ADR



RevPAR



For further information see INEbase-www.ine.es/en/welcome_en.htm All press releases at: www.ine.es/en/prensa/prensa_en.htm

Press Office: Telephone numbers: 91 583 93 63 / 94 08 – Fax: 91 583 90 87 - gprensa@ine.es

Information Area: Telephone number: 91 583 91 00 – Fax: 91 583 91 58 – www.ine.es/infoine/?L=1

Tourist Accommodation Occupancy Survey (Hotels and similar establishments)

April 2011

Provisional data

1. Travellers, overnight stays and average stay by categories of establishment

Category	Number of travellers			Number of overnight stays			Average stay
	Total	Residents in Spain	Residents abroad	Total	Residents in Spain	Residents abroad	
TOTAL	7,429,664	4,087,408	3,342,256	22,650,107	9,881,796	12,768,311	3.05
HOTELS: Golden stars							
Five	430,647	167,974	262,673	1,376,997	364,990	1,012,007	3.20
Four	3,321,243	1,683,068	1,638,175	10,735,849	3,907,954	6,827,895	3.23
Three	2,237,624	1,267,673	969,952	7,199,283	3,461,991	3,737,292	3.22
Two	551,797	374,109	177,688	1,300,498	864,191	436,307	2.36
One	204,477	135,063	69,414	447,898	264,637	183,261	2.19
INNS: Silver stars							
Two and three	371,202	256,427	114,775	842,628	535,041	307,588	2.27
One	312,674	203,095	109,579	746,953	482,992	263,961	2.39
Interannual rate	8.50	4.92	13.27	11.90	2.62	20.56	3.38
Cumulative interannual rate	4.28	0.24	10.57	7.20	-0.38	14.05	2.80

2. Open establishments, capacity, occupancy and employed personnel by categories of establishment

Category	Estimated open establishments	Estimated bedplaces	Level of occupancy			Employed personnel
			Per bedplaces	Per bedplaces at weekend	Per rooms	
TOTAL	15,110	1,397,874	53.03	57.95	56.30	185,857
HOTELS: Golden stars						
Five	258	82,380	54.90	60.87	61.44	23,047
Four	1,950	580,332	60.37	65.55	65.50	86,736
Three	2,481	394,991	59.52	63.58	61.16	47,117
Two	1,921	113,635	37.88	45.13	41.59	10,445
One	1,183	49,230	30.11	35.41	33.79	4,265
INNS: Silver stars						
Two and three	3,063	90,733	30.77	35.42	34.17	7,532
One	4,254	86,572	28.65	31.74	32.67	6,715
Interannual rate	0.36	0.32	10.64	4.23	9.85	2.26

3. Travellers, overnight stays, occupancy, average stay and employed personnel

Results by areas and tourist sites

	Travellers		Overnight stays		Level of occupancy			Average stay	Employed personnel
	Residents in Spain	Residents abroad	Residents in Spain	Residents abroad	Per bedplace	Per bedplaces at weekend	Per rooms		
Tourist areas with a greater level of occupancy per month									
Isla de Tenerife	83.382	195.280	381.241	1.513.287	72,22	75,34	76,83	6,80	14.904
Barcelona	137.787	491.497	272.724	1.246.206	71,97	77,58	79,67	2,41	11.269
Isla de Fuerteventura	11.728	105.930	48.318	911.472	71,94	73,51	80,49	8,16	6.886
Isla de Lanzarote	27.670	70.391	137.901	582.818	71,23	72,44	78,81	7,35	4.955
Costa Barcelona-Maresme	34.990	49.135	134.937	186.848	68,70	74,31	73,75	3,83	1.594
Isla de Gran Canaria	51.356	131.847	185.143	994.563	67,84	68,80	71,62	6,44	9.882
Isla de Mallorca	107.384	333.360	440.044	1.965.552	66,67	67,10	66,57	5,46	16.039
Isla de Menorca	10.919	1.434	56.341	6.566	65,09	73,76	69,57	5,09	437

Tourist areas with a greater number of overnight stays per month *

Costa del Sol	160.887	220.737	487.707	893.878	58,48	63,62	63,02	3,62	10.560
Costa Blanca	175.184	118.994	662.007	556.381	62,19	70,06	63,75	4,14	7.800
Costa Brava	123.633	164.012	357.955	548.108	54,27	55,32	51,60	3,15	5.533
Costa Daurada	118.686	66.296	379.150	230.292	56,93	57,17	55,47	3,29	3.085
Costa de la Luz de Cádiz	98.181	54.321	237.403	235.482	41,99	46,46	47,49	3,10	4.646
Costa de Almería	77.697	13.017	301.836	46.129	39,70	42,83	47,99	3,84	2.196
Costa de la Luz de Huelva	56.172	20.439	198.150	113.150	49,92	52,67	51,41	4,06	2.138
Costa Azahar	62.785	16.845	186.138	62.223	46,99	56,29	50,79	3,12	1.847

Tourist sites with a greater level of occupancy per month

Oliva (La)	3.296	17.606	15.434	162.834	80,66	84,24	91,53	8,53	1.396
Adeje	20.450	93.228	97.617	715.312	76,75	78,87	81,89	7,15	6.496
Arona	8.274	48.061	43.800	383.147	76,41	79,23	81,75	7,58	2.808
Yaiza	15.536	34.869	84.250	290.753	76,28	73,59	79,74	7,44	2.457
Benidorm	87.347	70.291	440.874	411.216	74,39	80,39	74,21	5,41	4.791
Salou	61.180	41.354	236.726	156.570	73,67	66,83	68,43	3,84	1.446
Pájara	3.900	69.788	19.861	603.942	73,45	72,45	79,58	8,47	4.486
Barcelona	129.894	481.488	244.857	1.219.219	72,46	77,47	79,90	2,39	10.970
Lloret De Mar	34.376	73.059	172.116	311.137	72,36	72,67	73,60	4,50	1.887
Tías	4.115	21.984	23.075	183.509	71,06	71,50	83,58	7,92	1.430

Tourist sites with a greater number of overnight stays per month *

Madrid	344.444	381.539	633.361	874.382	62,88	69,81	71,25	2,08	12.319
San Bartolomé De Tirajana	26.125	91.760	118.475	712.069	70,03	68,80	71,41	7,05	7.296
Palma	45.249	125.034	118.373	537.889	69,23	71,62	72,39	3,85	4.836
Calvià	26.126	70.141	168.053	438.061	68,67	67,90	68,29	6,30	3.808
Torremolinos	35.799	51.298	141.788	224.046	64,11	68,98	67,61	4,20	2.314
Sevilla	91.744	96.714	161.919	203.450	65,23	71,01	73,31	1,94	2.960
Puerto De La Cruz	26.390	20.254	139.831	178.257	66,30	67,95	65,84	6,82	2.662
Valencia	89.732	61.523	163.356	145.328	58,69	68,28	61,32	2,04	2.150
Granada	74.495	83.088	149.367	147.460	68,65	78,77	69,40	1,88	1.822
Benalmádena	19.437	28.969	82.532	176.978	69,96	70,91	76,32	5,36	1.458

* Not taken into account those included in the preceding table because they are in the bigger level of occupancy tables too.

4. Travellers, overnight stays and average stay

Results by Autonomous Cities and Communities and provinces

	Number of travellers			Overnight stays			Average stay
	Total	Residents in Spain	Residents abroad	Total	Residents in Spain	Residents abroad	
TOTAL	7,429,664	4,087,408	3,342,256	22,650,107	9,881,796	12,768,311	3.05
Andalucía	1,433,829	801,187	632,642	3,908,950	2,002,987	1,905,962	2.73
Almería	95,149	81,055	14,094	360,715	312,651	48,064	3.79
Cádiz	194,648	122,314	72,335	553,604	282,850	270,754	2.84
Córdoba	97,450	54,248	43,202	164,595	98,553	66,042	1.69
Granada	229,369	123,822	105,548	485,373	279,710	205,664	2.12
Huelva	96,571	73,533	23,038	340,952	224,029	116,923	3.53
Jaén	49,817	41,320	8,497	84,529	71,797	12,732	1.70
Málaga	426,107	181,494	244,612	1,453,978	515,150	938,828	3.41
Sevilla	244,718	123,402	121,316	465,204	218,249	246,955	1.90
Aragón	189,778	162,169	27,609	367,337	320,587	46,750	1.94
Huesca	47,267	41,222	6,044	104,884	94,508	10,376	2.22
Teruel	32,924	30,394	2,530	61,076	56,626	4,450	1.86
Zaragoza	109,588	90,553	19,035	201,377	169,453	31,924	1.84
Asturias, Principado de	120,900	108,445	12,456	249,564	225,374	24,190	2.06
Balears, Illes	489,678	137,908	351,770	2,609,882	576,162	2,033,720	5.33
Canarias	695,929	182,321	513,608	4,842,116	773,180	4,068,936	6.96
Palmas, Las	398,922	90,754	308,168	2,860,215	371,362	2,488,853	7.17
Santa Cruz de Tenerife	297,008	91,568	205,440	1,981,900	401,818	1,580,083	6.67
Cantabria	91,146	76,623	14,523	188,893	162,894	25,999	2.07
Castilla y León	380,807	310,805	70,002	659,188	550,960	108,228	1.73
Ávila	26,633	22,933	3,700	45,195	39,789	5,406	1.70
Burgos	63,833	46,305	17,528	103,548	80,052	23,496	1.62
León	60,748	52,486	8,262	105,362	93,050	12,312	1.73
Palencia	17,257	14,347	2,911	29,918	25,726	4,191	1.73
Salamanca	87,028	66,583	20,444	161,777	127,756	34,021	1.86
Segovia	33,556	27,198	6,358	52,862	43,626	9,235	1.58
Soria	18,058	17,076	981	33,894	32,195	1,699	1.88
Valladolid	53,567	46,168	7,399	93,090	79,790	13,300	1.74
Zamora	20,128	17,708	2,419	33,543	28,975	4,568	1.67
Castilla-La Mancha	182,263	146,244	36,019	323,505	269,688	53,817	1.77
Albacete	30,053	27,681	2,372	67,838	64,225	3,612	2.26
Ciudad Real	35,899	31,243	4,656	64,736	58,066	6,670	1.80
Cuenca	30,319	24,857	5,462	51,377	42,852	8,525	1.69
Guadalajara	22,576	20,735	1,841	38,587	36,227	2,360	1.71
Toledo	63,415	41,728	21,687	100,968	68,318	32,649	1.59
Cataluña	1,445,972	588,496	857,476	3,872,266	1,470,689	2,401,578	2.68
Barcelona	860,012	255,486	604,526	2,135,977	561,377	1,574,600	2.48
Girona	308,107	141,706	166,401	940,907	388,689	552,218	3.05
Lleida	60,589	51,922	8,667	118,478	100,105	18,373	1.96
Tarragona	217,264	139,383	77,881	676,903	420,517	256,386	3.12
Comunitat Valenciana	640,163	428,262	211,901	2,069,574	1,280,487	789,087	3.23
Alicante/Alacant	307,709	186,003	121,706	1,245,484	682,561	562,923	4.05
Castellón/Castelló	90,137	72,201	17,936	269,716	205,755	63,962	2.99
Valencia/València	242,316	170,058	72,259	554,373	392,171	162,202	2.29
Extremadura	138,293	115,100	23,192	258,458	222,252	36,206	1.87
Badajoz	72,219	58,397	13,822	128,484	107,358	21,126	1.78
Cáceres	66,073	56,703	9,370	129,973	114,894	15,080	1.97
Galicia	270,118	215,308	54,810	572,105	475,594	96,511	2.12
Coruña, A	122,397	92,209	30,188	250,287	195,460	54,827	2.04
Lugo	41,904	34,529	7,375	70,238	60,354	9,883	1.68
Ourense	24,896	22,811	2,085	46,141	42,165	3,976	1.85
Pontevedra	80,920	65,759	15,161	205,440	177,615	27,825	2.54
Madrid, Comunidad de	912,889	482,184	430,705	1,836,841	864,654	972,187	2.01
Murcia, Región de	93,148	75,776	17,372	246,667	200,079	46,588	2.65
Navarra, Comunidad Foral de	72,524	58,978	13,546	135,334	111,638	23,696	1.87
País Vasco	212,227	147,400	64,827	398,710	278,798	119,912	1.88
Álava	30,395	24,323	6,072	53,970	43,290	10,680	1.78
Guipúzcoa	88,165	58,212	29,954	162,540	110,814	51,726	1.84
Vizcaya	93,666	64,865	28,801	182,200	124,694	57,506	1.95
Rioja, La	49,537	41,895	7,641	88,848	77,239	11,609	1.79
Ceuta	6,667	5,236	1,431	11,658	9,599	2,059	1.75
Melilla	3,797	3,070	727	10,212	8,936	1,276	2.69

5. Establishment, capacity, occupancy and employed personnel

Results by Autonomous Cities and Communities and provinces

	Estimated open establishments	Estimated bedplaces	Level of occupancy			Employed personnel
			Per bedplaces	Per bedplaces at weekends	Per rooms	
TOTAL	15,110	1,397,874	53.03	57.95	56.30	185,857
Andalucía	2,520	263,405	48.93	54.18	53.57	32,763
Almería	193	30,903	38.62	41.64	46.16	2,470
Cádiz	453	44,667	40.77	46.38	46.17	5,694
Córdoba	196	10,545	51.24	60.86	55.44	1,373
Granada	449	31,803	50.21	56.55	51.39	3,644
Huelva	161	23,849	47.15	50.31	49.06	2,468
Jaén	182	9,080	30.94	39.46	32.45	1,221
Málaga	563	85,695	56.06	61.06	60.18	12,032
Sevilla	323	26,862	56.87	62.57	64.03	3,861
Aragón	816	39,334	30.64	40.49	34.53	4,307
Huesca	323	14,928	23.21	31.49	23.07	1,432
Teruel	210	6,727	28.84	39.10	32.89	768
Zaragoza	283	17,679	37.60	48.62	43.91	2,108
Asturias, Principado de	616	25,272	32.65	37.92	34.48	2,726
Balears, Illes	509	129,895	65.85	66.42	65.82	17,411
Canarias	534	223,422	70.24	72.13	75.66	37,543
Palmas, Las	267	132,650	70.01	71.22	76.18	21,723
Santa Cruz de Tenerife	267	90,771	70.58	73.45	74.92	15,820
Cantabria	368	17,359	35.92	44.43	37.38	2,319
Castilla y León	1,418	61,102	35.65	45.33	38.51	7,800
Ávila	106	4,940	30.27	45.61	34.48	636
Burgos	215	9,205	37.12	44.27	40.46	1,014
León	288	10,836	32.21	39.95	35.89	1,208
Palencia	99	3,459	28.72	32.21	32.18	353
Salamanca	222	11,349	46.91	59.77	48.47	1,543
Segovia	141	5,970	29.23	42.90	32.82	796
Soria	118	3,880	28.94	39.51	31.35	490
Valladolid	144	8,119	38.04	45.89	41.63	1,163
Zamora	85	3,344	33.06	39.66	31.83	597
Castilla-La Mancha	855	35,245	30.45	36.89	33.27	3,933
Albacete	177	7,330	30.72	35.01	34.72	874
Ciudad Real	188	7,593	28.36	34.74	32.81	851
Cuenca	162	5,715	29.84	37.07	31.73	604
Guadalajara	136	4,900	26.11	30.46	28.63	440
Toledo	192	9,707	34.43	43.12	35.76	1,165
Cataluña	2,089	223,880	56.12	59.56	59.19	27,739
Barcelona	939	110,541	63.50	68.61	70.92	16,332
Girona	558	58,124	51.93	53.62	49.45	6,138
Lleida	332	16,741	23.54	28.55	22.96	1,601
Tarragona	259	38,474	55.42	56.04	53.80	3,669
Comunitat Valenciana	1,048	126,065	53.65	61.31	55.65	14,640
Alicante/Alacant	470	67,927	59.62	67.15	60.87	8,173
Castellón/Castelló	193	20,162	43.91	53.00	47.20	2,184
Valencia/València	385	37,976	48.16	55.27	50.50	4,283
Extremadura	446	20,181	42.38	49.77	45.16	2,734
Badajoz	215	10,086	42.10	50.04	46.60	1,318
Cáceres	231	10,095	42.67	49.51	43.71	1,416
Galicia	1,539	63,013	30.09	34.67	33.48	7,110
Coruña, A	629	25,023	33.08	37.66	38.56	2,607
Lugo	303	9,489	24.56	27.42	26.93	1,035
Ourense	194	6,365	24.00	29.52	26.64	732
Pontevedra	412	22,136	30.82	35.88	32.46	2,737
Madrid, Comunidad de	1,179	104,175	58.24	65.30	65.95	15,231
Murcia, Región de	190	18,486	43.95	47.74	43.02	2,484
Navarra, Comunidad Foral de	318	12,642	35.47	43.73	39.32	1,671
País Vasco	498	26,430	49.67	61.46	57.11	4,227
Álava	75	4,179	42.32	50.96	45.76	593
Guipúzcoa	228	9,742	54.87	68.13	60.43	1,650
Vizcaya	195	12,509	48.08	59.77	58.34	1,984
Rioja, La	143	6,223	47.18	63.59	50.58	911
Ceuta	14	895	43.40	55.63	51.75	162
Melilla	11	849	40.08	41.68	50.28	146

6. Percentage distribution of Spanish travellers in each province by Autonomous City and Community of origin

Results by provinces

(Continued)

Provincias	Total	Andalucía	Aragón	Asturias, P. de	Balears, Illes	Canarias	Cantabria	Castilla y León	Castilla-La Mancha	Cataluña
TOTAL	100	15.74	2.68	2.56	2.40	2.70	1.38	4.85	3.04	16.18
Álava	100	3.27	4.67	2.97	1.06	0.78	2.10	6.65	2.12	14.41
Albacete	100	8.02	1.79	0.85	0.72	0.38	0.26	3.09	19.19	9.28
Alicante/Alacant	100	5.10	2.03	1.75	0.65	0.77	0.72	3.84	4.59	5.27
Almería	100	38.95	1.11	0.99	0.26	0.26	0.57	3.16	1.81	9.80
Asturias	100	3.55	1.36	13.16	0.74	0.77	4.01	10.72	1.84	5.67
Ávila	100	9.43	1.91	3.02	1.17	0.86	2.46	8.76	5.34	5.40
Badajoz	100	20.14	2.23	1.72	0.49	0.79	0.87	6.36	3.34	6.14
Balears, Illes	100	8.67	0.79	1.19	37.96	1.23	0.35	1.58	0.92	17.63
Barcelona	100	7.36	2.80	1.29	2.93	1.97	1.37	3.07	1.49	35.19
Burgos	100	4.83	3.81	4.53	0.25	0.59	2.48	15.41	3.33	10.10
Cáceres	100	14.93	1.44	2.53	0.78	1.08	2.39	6.85	3.93	6.54
Cádiz	100	58.31	0.68	1.00	0.69	0.73	0.62	2.22	2.78	5.23
Cantabria	100	3.39	3.49	6.55	1.39	0.89	6.72	10.83	5.91	6.58
Castellón/Castelló	100	3.33	3.66	0.65	1.88	0.29	0.81	1.31	2.79	27.19
Ciudad Real	100	13.59	1.09	1.70	0.93	0.41	1.13	3.83	12.79	7.26
Córdoba	100	41.88	1.28	0.92	0.50	0.65	0.55	2.64	2.49	9.86
Coruña, A	100	4.67	0.80	4.86	1.12	1.20	1.55	5.92	2.60	8.57
Cuenca	100	7.11	3.58	1.78	1.39	0.57	0.89	4.79	10.82	11.30
Girona	100	4.29	2.18	0.19	0.82	1.23	0.18	1.01	1.73	70.16
Granada	100	45.90	1.09	1.00	1.33	1.44	0.39	3.40	2.14	7.28
Guadalajara	100	6.55	4.59	1.86	0.11	0.43	2.12	4.27	16.60	15.31
Guipúzcoa	100	3.31	4.82	5.87	1.22	0.71	1.67	6.06	2.23	19.82
Huelva	100	54.88	1.47	1.54	0.14	0.87	0.25	3.17	2.31	5.77
Huesca	100	4.15	21.32	0.84	1.34	0.35	1.25	1.75	1.45	26.43
Jaén	100	48.33	1.33	0.95	1.28	0.71	0.31	1.41	3.42	7.85
León	100	3.27	0.99	9.49	0.47	0.69	3.96	20.45	3.01	4.87
Lleida	100	3.75	3.00	0.48	0.95	0.49	0.40	1.72	1.20	71.76
Lugo	100	4.58	1.36	7.07	0.51	0.89	2.49	6.61	1.40	6.17
Madrid	100	14.77	2.68	3.12	1.99	3.30	1.81	4.54	2.82	13.76
Málaga	100	51.17	0.71	0.99	0.65	1.17	0.43	2.44	2.69	5.79
Murcia	100	12.84	1.42	0.80	1.11	0.47	0.75	3.02	5.60	10.01
Navarra	100	3.50	4.88	2.03	0.88	0.60	1.88	4.75	1.62	18.27
Ourense	100	1.67	0.27	4.42	0.33	0.24	0.86	6.18	1.65	3.49
Palencia	100	2.42	1.57	3.93	0.22	0.35	6.56	19.97	2.47	6.80
Palmas, Las	100	9.04	0.64	1.11	0.79	39.83	0.70	1.07	0.51	6.69
Pontevedra	100	3.68	0.94	6.17	1.45	1.32	2.72	10.30	3.68	4.32
Rioja, La	100	3.74	4.83	4.17	1.04	1.27	3.22	6.09	1.93	18.60
Salamanca	100	8.43	2.15	3.70	1.20	1.90	3.00	15.17	4.54	4.21
S. C. Tenerife	100	9.01	0.73	1.12	0.58	26.00	0.70	1.29	0.59	5.06
Segovia	100	5.17	2.26	4.48	0.72	0.56	1.90	13.60	3.72	6.05
Sevilla	100	41.46	1.43	0.89	0.83	2.32	0.59	2.92	2.66	9.89
Soria	100	3.34	4.44	2.65	0.49	0.34	1.32	12.45	3.10	15.58
Tarragona	100	4.11	5.68	1.68	0.80	0.47	0.43	2.96	1.43	44.21
Teruel	100	2.26	13.34	0.76	0.41	0.33	1.15	2.22	3.27	23.07
Toledo	100	13.50	1.76	3.08	0.55	0.46	0.78	5.91	11.63	6.82
Valencia/València	100	7.31	3.50	2.14	1.55	0.84	0.93	2.82	4.41	15.62
Valladolid	100	8.47	1.81	4.60	1.55	1.71	2.24	19.26	4.16	6.98
Vizcaya	100	3.96	2.77	3.33	0.76	1.39	1.92	5.07	1.65	15.31
Zamora	100	7.07	0.73	6.35	0.86	0.19	3.03	13.10	3.23	8.87
Zaragoza	100	5.44	12.18	1.53	1.10	1.09	1.20	5.96	2.76	22.44
Ceuta	100	45.78	-	0.19	1.74	0.77	0.66	0.39	0.96	5.31
Melilla	100	58.60	0.80	0.34	0.39	1.60	0.10	0.30	0.20	4.15

6. Percentage distribution of Spanish travellers in each province by Autonomous City and Community of origin

Results by provinces

(Conclusion)

Provinces	Comunitat Valenciana	Extremadura	Galicia	Madrid, C. de	Murcia, Región de	Navarra, C. Foral de	País Vasco	Rioja, La	Ceuta	Melilla
TOTAL	9.41	1.78	5.59	20.36	2.16	1.44	6.45	0.77	0.32	0.19
Álava	4.64	1.69	4.66	20.35	0.36	2.45	26.04	1.73	0.06	-
Albacete	22.77	1.30	1.48	20.46	6.59	1.00	2.46	0.31	0.02	0.05
Alicante/Alacant	39.92	0.47	1.78	21.15	3.03	1.15	6.44	0.84	0.35	0.15
Almería	14.61	0.21	2.73	11.95	8.82	0.59	3.12	0.73	0.07	0.27
Asturias	2.50	0.88	12.34	26.83	0.76	1.68	11.57	1.55	0.04	0.03
Ávila	6.20	2.95	5.67	38.58	2.08	0.88	4.58	0.64	0.05	-
Badajoz	4.95	16.68	3.06	22.92	2.39	1.74	5.00	0.71	0.43	0.04
Balears, Illes	8.38	2.01	2.30	14.19	0.92	0.12	1.19	0.42	0.14	0.01
Barcelona	6.69	0.98	3.27	20.94	1.16	1.61	6.41	0.72	0.63	0.11
Burgos	4.44	1.56	6.92	28.50	1.09	1.40	9.28	1.41	0.03	0.04
Cáceres	5.18	8.44	3.88	30.28	1.58	2.01	7.48	0.53	0.13	0.03
Cádiz	3.27	2.70	1.57	13.95	1.11	0.67	2.72	0.57	1.08	0.12
Cantabria	3.58	1.36	8.87	21.43	0.76	2.68	13.77	1.67	0.08	0.04
Castellón/Castelló	31.51	0.40	1.16	16.69	2.53	0.68	3.40	1.65	0.05	0.00
Ciudad Real	12.08	2.06	2.15	26.78	2.66	0.76	9.91	0.75	0.12	-
Córdoba	6.92	2.17	1.70	22.12	2.55	0.75	2.54	0.30	0.14	0.04
Coruña, A	4.00	0.98	37.21	20.53	0.82	0.85	3.86	0.38	0.07	0.01
Cuenca	14.05	2.29	4.09	30.52	2.53	0.53	3.33	0.44	-	-
Girona	3.62	0.14	1.82	6.59	0.92	0.47	3.57	0.69	0.01	0.39
Granada	9.15	1.24	1.06	16.54	4.31	0.49	1.79	0.50	0.43	0.52
Guadalajara	10.97	1.11	1.50	29.72	0.95	0.83	2.68	0.38	-	0.03
Guipúzcoa	5.31	1.08	4.24	19.35	0.61	3.83	18.26	1.60	0.02	0.00
Huelva	3.49	5.37	2.41	12.58	1.23	0.31	3.76	0.27	0.15	0.01
Huesca	6.84	0.30	0.85	19.63	0.32	2.87	8.80	1.27	0.05	0.18
Jaén	8.09	1.51	1.39	16.36	3.33	0.89	2.28	0.33	0.21	0.02
León	3.02	1.08	13.53	22.47	0.76	2.66	7.94	1.16	0.11	0.05
Lleida	2.77	0.24	0.94	6.85	0.30	0.89	3.76	0.27	0.16	0.07
Lugo	3.91	1.04	41.79	14.82	0.63	0.72	4.63	1.32	0.04	0.03
Madrid	8.89	2.56	5.38	21.77	2.75	1.60	6.10	1.09	0.63	0.44
Málaga	8.84	2.40	2.15	15.49	0.99	0.29	2.23	0.08	0.63	0.86
Murcia	19.84	0.58	1.89	19.49	19.34	0.53	1.69	0.32	0.10	0.20
Navarra	5.41	1.12	2.98	17.78	1.15	12.34	19.56	1.18	0.06	0.01
Ourense	1.13	0.62	60.14	14.26	0.42	0.45	3.76	0.12	-	-
Palencia	3.02	1.56	7.17	24.93	0.66	2.36	14.57	1.19	0.09	0.17
Palmas, Las	1.16	0.28	2.67	30.80	0.22	0.40	3.71	0.09	0.28	0.01
Pontevedra	2.72	1.79	38.84	16.41	0.79	0.59	3.71	0.40	0.14	0.04
Rioja, La	5.95	0.72	3.99	21.05	1.28	3.22	16.04	2.50	0.38	-
Salamanca	5.26	4.04	6.08	25.81	0.94	1.95	10.57	0.86	0.08	0.12
S. C. Tenerife	1.35	0.25	1.78	46.14	0.19	0.58	4.41	0.17	0.03	0.05
Segovia	8.28	1.72	4.42	35.01	1.40	1.44	8.17	1.00	0.09	-
Sevilla	5.51	2.25	1.96	20.86	1.68	0.69	2.67	0.46	0.61	0.32
Soria	6.83	0.92	5.57	28.34	0.82	2.33	10.44	1.05	-	-
Tarragona	10.28	0.56	2.01	6.45	1.22	2.37	14.49	0.66	0.01	0.17
Teruel	22.43	0.51	1.43	16.92	2.04	1.79	7.39	0.64	-	0.02
Toledo	12.32	3.01	3.61	23.32	3.06	1.41	7.56	1.02	0.16	0.03
Valencia/València	19.49	0.81	3.32	27.93	3.34	1.35	3.62	0.58	0.33	0.10
Valladolid	6.21	1.50	7.97	23.99	1.21	1.51	6.10	0.67	0.02	0.02
Vizcaya	4.17	0.67	4.87	21.36	0.84	3.41	27.12	1.07	0.33	0.00
Zamora	5.70	1.33	12.94	25.76	1.36	0.84	7.80	0.85	-	-
Zaragoza	7.71	1.31	3.39	20.72	1.55	2.13	7.02	1.38	0.80	0.28
Ceuta	2.12	0.33	0.39	31.47	2.02	-	0.48	-	7.02	0.38
Melilla	3.27	0.72	3.10	8.63	2.41	0.20	2.37	1.02	3.68	8.12

7. Percentage distribution of overnight stays in each province by Autonomous City and Community of origin

Results by provinces

(Continued)

Provinces	Total	Andalucía	Aragón	Asturias, P. de	Balears, Illes	Canarias	Cantabria	Castilla y León	Castilla-La Mancha	Cataluña
TOTAL	100	15.00	2.62	2.77	2.45	3.10	1.29	4.85	3.39	15.29
Álava	100	3.72	4.52	2.93	1.18	0.78	2.07	7.20	1.77	15.61
Albacete	100	9.23	0.99	0.74	0.38	0.23	0.14	2.45	27.82	9.28
Alicante/Alacant	100	6.31	2.86	3.31	1.12	1.09	1.60	5.04	3.80	4.34
Almería	100	29.30	1.61	2.30	0.16	0.25	1.39	5.41	1.35	16.22
Asturias	100	5.79	1.32	10.19	0.79	1.08	3.02	9.37	1.81	6.24
Ávila	100	10.27	1.55	2.28	1.08	0.67	1.74	6.98	6.80	5.86
Badajoz	100	23.42	1.88	1.34	0.63	0.67	0.68	5.27	3.87	7.85
Balears, Illes	100	10.49	0.80	2.50	22.59	1.29	0.33	1.74	1.67	21.44
Barcelona	100	9.58	2.98	1.97	2.60	2.48	1.56	2.79	1.81	30.19
Burgos	100	4.33	3.23	4.65	0.23	0.53	1.93	21.04	3.64	10.13
Cáceres	100	14.71	1.86	2.56	0.57	1.14	2.14	6.03	3.65	6.86
Cádiz	100	50.93	0.84	1.17	0.80	0.93	0.61	2.93	3.55	6.44
Cantabria	100	4.03	3.34	6.51	3.03	0.94	5.54	9.34	7.47	6.73
Castellón/Castelló	100	2.56	3.43	0.62	1.85	0.57	1.60	1.56	5.70	24.05
Ciudad Real	100	15.23	0.86	1.63	0.90	0.33	1.09	3.29	15.50	7.55
Córdoba	100	40.49	1.34	1.19	0.45	0.70	0.52	2.59	2.41	11.56
Coruña, A	100	5.18	1.08	4.41	1.12	1.66	1.52	5.74	4.49	8.27
Cuenca	100	9.44	3.26	1.45	1.16	0.61	0.54	4.90	10.98	12.11
Girona	100	7.66	2.86	1.29	1.68	2.85	0.25	1.05	3.82	51.94
Granada	100	44.65	1.70	1.25	1.49	1.47	0.41	3.29	2.08	7.89
Guadalajara	100	6.15	3.28	1.64	0.11	0.53	2.30	4.99	19.14	12.36
Guipúzcoa	100	3.74	4.53	5.51	2.17	0.75	1.48	6.62	2.02	20.22
Huelva	100	37.68	2.48	2.42	0.19	0.96	1.00	3.94	2.46	11.46
Huesca	100	4.66	19.45	0.77	2.99	0.36	1.16	1.66	1.36	26.01
Jaén	100	45.94	1.50	1.04	1.24	0.64	0.23	1.41	2.93	10.75
León	100	3.33	0.93	7.86	0.44	0.52	3.08	24.73	3.75	5.24
Lleida	100	4.42	2.34	0.57	1.01	0.46	0.33	2.53	1.93	69.71
Lugo	100	4.30	1.14	6.29	0.33	0.60	2.18	6.91	1.15	5.19
Madrid	100	14.89	2.69	3.24	2.08	4.09	1.89	4.69	2.80	14.24
Málaga	100	41.50	0.70	1.91	0.84	1.31	0.40	3.05	4.91	7.27
Murcia	100	14.40	1.01	1.02	1.33	0.84	0.67	5.87	6.25	9.56
Navarra	100	3.89	4.71	1.82	0.74	0.63	1.82	5.22	2.06	18.18
Ourense	100	1.72	0.17	4.79	0.43	0.34	1.14	6.74	1.48	3.20
Palencia	100	3.41	1.60	3.86	0.20	0.23	6.34	20.75	2.84	6.49
Palmas, Las	100	8.27	0.87	1.77	0.60	29.84	1.02	1.46	0.70	8.63
Pontevedra	100	3.79	0.68	5.94	1.47	1.74	2.64	10.41	5.90	3.78
Rioja, La	100	4.69	4.34	3.60	0.93	1.05	2.81	6.76	2.15	17.75
Salamanca	100	8.24	2.07	5.28	1.40	1.90	2.74	18.63	4.06	4.38
S. C. Tenerife	100	8.20	0.92	1.41	0.57	14.94	0.70	1.56	0.66	5.96
Segovia	100	4.89	2.34	4.11	0.63	0.65	1.89	13.63	4.22	7.78
Sevilla	100	36.83	1.67	0.99	1.08	2.49	0.67	3.28	2.90	10.70
Soria	100	3.32	4.07	3.23	0.37	0.24	1.14	13.06	3.36	15.19
Tarragona	100	6.22	4.70	3.57	0.86	0.89	0.61	4.64	1.87	31.34
Teruel	100	2.39	16.99	1.00	0.38	0.41	1.02	2.91	3.24	22.74
Toledo	100	12.52	1.85	3.37	0.69	0.55	0.78	7.16	10.16	8.35
Valencia/València	100	8.43	3.77	3.08	1.11	0.80	0.98	3.45	5.02	13.18
Valladolid	100	11.15	2.22	3.72	1.62	2.21	2.22	18.56	3.79	6.82
Vizcaya	100	4.49	2.46	3.36	0.87	1.69	1.67	4.82	1.79	15.79
Zamora	100	7.72	0.80	6.25	0.93	0.25	2.64	14.58	3.72	7.94
Zaragoza	100	5.58	14.05	1.66	0.88	0.99	1.05	7.40	2.83	20.53
Ceuta	100	55.59	-	0.25	1.49	1.49	0.29	0.17	1.41	2.85
Melilla	100	62.90	0.52	0.12	0.21	1.21	0.09	0.23	0.14	4.24

7. Percentage distribution of overnight stays in each province by Autonomous City and Community of origin

Results by provinces

(Conclusion)

Provinces	Comunitat Valenciana	Extremadura	Galicia	Madrid, C. de	Murcia, Región de	Navarra, C. Foral de	País Vasco	Rioja, La	Ceuta	Melilla
TOTAL	8.97	1.85	5.96	20.72	1.91	1.51	7.08	0.77	0.27	0.18
Álava	6.08	2.30	4.73	18.76	0.40	1.97	24.77	1.14	0.06	-
Albacete	18.09	0.89	1.17	19.68	5.84	1.17	1.62	0.16	0.10	0.03
Alicante/Alacant	28.74	0.40	3.13	21.10	1.53	2.20	11.26	1.55	0.53	0.09
Almería	9.05	0.18	6.71	12.78	5.16	1.34	5.17	1.42	0.05	0.14
Asturias	4.00	0.87	10.38	29.56	0.75	1.97	11.05	1.72	0.07	0.04
Ávila	6.86	3.56	7.84	35.92	2.49	1.07	4.46	0.44	0.13	-
Badajoz	4.91	14.51	2.91	21.78	2.08	2.39	4.54	0.78	0.39	0.11
Balears, Illes	8.04	3.94	4.00	15.42	1.14	0.09	4.09	0.32	0.08	0.02
Barcelona	6.24	1.72	4.25	22.11	1.20	1.41	5.96	0.66	0.41	0.09
Burgos	5.71	1.46	6.97	25.19	0.88	1.04	7.68	1.23	0.04	0.09
Cáceres	5.67	11.47	4.29	26.21	1.87	1.94	8.52	0.40	0.08	0.02
Cádiz	4.08	2.42	2.20	15.85	1.09	0.84	3.94	0.55	0.76	0.09
Cantabria	4.34	2.26	8.45	21.09	0.97	2.26	11.86	1.63	0.14	0.09
Castellón/Castelló	27.41	0.28	2.09	19.08	2.07	1.63	4.21	1.23	0.03	0.03
Ciudad Real	11.21	1.93	3.05	25.86	2.69	0.69	7.54	0.58	0.08	-
Córdoba	7.14	1.94	1.72	21.28	2.38	0.82	2.98	0.28	0.17	0.04
Coruña, A	3.51	1.15	34.95	21.01	1.00	0.74	3.77	0.29	0.07	0.04
Cuenca	13.39	2.01	5.12	28.10	2.07	0.45	2.89	1.51	-	-
Girona	3.09	0.96	4.55	8.78	2.24	0.94	4.01	0.99	0.00	1.03
Granada	8.39	1.26	1.19	16.53	3.78	0.58	2.38	0.54	0.65	0.46
Guadalajara	11.07	2.09	2.03	29.69	1.26	0.51	2.63	0.21	-	0.01
Guipúzcoa	5.50	1.14	4.14	20.23	0.62	3.43	16.57	1.30	0.02	0.00
Huelva	4.92	3.94	5.27	14.08	1.26	0.86	6.73	0.20	0.15	0.00
Huesca	7.14	0.19	1.05	19.53	0.47	2.53	9.26	1.06	0.05	0.28
Jaén	8.77	1.64	1.54	15.60	3.18	0.99	2.10	0.28	0.23	0.01
León	3.22	0.96	11.67	21.28	0.82	2.53	8.27	1.07	0.26	0.03
Lleida	3.05	0.18	1.02	7.02	0.34	0.72	3.88	0.31	0.08	0.09
Lugo	3.45	1.24	44.73	15.47	0.54	0.49	4.44	1.45	0.07	0.03
Madrid	8.65	2.47	6.42	19.22	2.70	1.56	6.30	1.05	0.62	0.40
Málaga	9.80	3.76	4.01	14.84	0.92	0.39	3.42	0.07	0.39	0.52
Murcia	16.10	0.56	2.90	21.98	13.51	1.26	2.16	0.40	0.05	0.14
Navarra	5.61	1.12	3.43	18.13	0.94	12.53	17.90	1.20	0.06	0.00
Ourense	1.23	0.42	52.18	21.47	0.34	0.47	3.82	0.07	-	-
Palencia	3.05	1.33	7.37	22.33	1.22	2.19	15.56	1.06	0.05	0.10
Palmas, Las	1.11	0.28	3.31	35.79	0.25	0.43	5.32	0.11	0.17	0.06
Pontevedra	2.32	1.31	35.93	13.34	0.65	3.16	6.38	0.38	0.13	0.04
Rioja, La	6.56	0.63	3.50	22.18	1.23	3.34	15.31	2.93	0.24	-
Salamanca	5.28	3.87	6.03	22.63	1.06	1.72	9.86	0.68	0.05	0.11
S. C. Tenerife	1.74	0.30	2.30	53.62	0.23	0.71	5.88	0.24	0.05	0.02
Segovia	9.44	1.83	5.02	30.21	1.34	1.41	9.66	0.89	0.05	-
Sevilla	6.34	1.97	2.23	21.38	1.71	0.88	3.18	0.65	0.65	0.37
Soria	6.98	0.86	5.60	27.41	0.62	2.94	10.36	1.24	-	-
Tarragona	8.26	1.21	2.85	7.31	1.72	3.32	19.71	0.65	0.19	0.09
Teruel	19.74	0.37	1.75	17.02	1.69	1.62	6.20	0.50	-	0.01
Toledo	13.44	2.68	3.91	21.10	3.30	1.41	7.56	1.03	0.13	0.02
Valencia/València	16.66	0.62	6.92	26.20	3.15	1.12	4.78	0.46	0.21	0.06
Valladolid	6.42	1.67	7.57	23.33	1.10	1.35	5.67	0.55	0.01	0.01
Vizcaya	4.67	0.70	5.44	22.12	0.85	3.01	24.56	1.51	0.18	0.00
Zamora	6.04	1.24	11.96	25.39	1.26	1.21	7.07	0.98	-	-
Zaragoza	7.85	1.46	3.68	20.10	1.30	1.93	6.45	1.27	0.80	0.17
Ceuta	1.63	0.98	0.17	23.69	3.23	-	0.37	-	5.25	1.15
Melilla	2.59	0.76	1.11	14.24	3.77	0.07	1.37	0.52	2.13	3.78

8. Travellers, overnight stays and average stay by country of residence

Results by countries

Countries	Number of travellers		Overnight stays	
	Total	%	Total	%
TOTAL	7,429,664	100.00	22,650,107	100.00
Residents in Spain	4,087,408	55.01	9,881,796	43.63
Residents abroad	3,342,256	44.99	12,768,311	56.37
Total Residents abroad	3,342,256	100.00	12,768,311	100.00
Total Residents in U.E. (without Spain)	2,501,180	74.84	10,600,943	83.03
- Germany	573,522	17.16	3,337,310	26.14
- Austria	41,848	1.25	168,124	1.32
- Belgium	96,579	2.89	435,000	3.41
- Denmark	48,101	1.44	250,744	1.96
- Finland	27,812	0.83	127,163	1.00
- France	441,062	13.20	1,138,907	8.92
- Greece	17,956	0.54	57,807	0.45
- Ireland	45,554	1.36	189,910	1.49
- Italy	224,253	6.71	633,910	4.96
- Luxembourg	7,412	0.22	36,489	0.29
- Netherlands	124,334	3.72	461,288	3.61
- Poland	34,375	1.03	142,834	1.12
- Portugal	127,692	3.82	346,834	2.72
- United Kingdom	554,331	16.59	2,724,970	21.34
- Czech Republic	11,110	0.33	42,185	0.33
- Sweden	68,928	2.06	316,318	2.48
- Rest of UE*	56,311	1.68	191,150	1.50
Norway	37,666	1.13	184,902	1.45
Russia	46,046	1.38	142,490	1.12
Switzerland	70,037	2.10	279,567	2.19
Rest of Europe	75,293	2.25	216,683	1.70
Japan	39,580	1.18	65,430	0.51
United States of America	173,011	5.18	376,621	2.95
Rest of America	191,513	5.73	446,766	3.50
African's countries	35,687	1.07	78,411	0.61
Rest of the world	172,242	5.15	376,497	2.95

*Countries included in the Rest of UE: Bulgaria, Cyprus, Slovakia, Slovenia, Estonia, Hungary, Latvia, Lithuania, Malta and Romania

Hotel Price Index (HPI). 2008 Base

April 2011

Provisional data

General Autonomous Cities and Communities and national indices

	Index	Interannual variation rate
TOTAL	92.5	0.1
Andalucía	92.0	-2.4
Aragón	82.2	-2.9
Asturias, Principado de	95.7	-0.7
Balears, Illes	94.7	2.9
Canarias	101.0	4.7
Cantabria	98.0	1.1
Castilla y León	96.1	-2.0
Castilla - La Mancha	93.2	-3.7
Cataluña	88.9	-0.2
Comunitat Valenciana	92.6	-1.4
Extremadura	92.7	0.5
Galicia	98.6	-0.4
Madrid, Comunidad de	84.5	-1.5
Murcia, Región de	86.9	-4.7
Navarra, Comunidad Foral de	91.7	-1.9
País Vasco	91.4	1.8
Rioja, La	88.4	-4.7
Ceuta	108.4	2.9
Melilla	97.6	-2.4

National General Index and breakdown by categories

	Index	Interannual variation rate
TOTAL	92.5	0.1
HOTELS: Gold stars		
Five	87.5	1.3
Fourth	91.8	-0.3
Three	93.6	-0.1
Two	96.3	2.0
One	98.2	1.7
HOSTALS: Silver stars		
Three and two	95.3	-2.4
One	99.6	0.5

Indicators on the Profitability of the Hotel Sector

April 2011

Provisional data

ADR and RevPAR for Autonomous Cities and Communities and national indices

	ADR (in euros)	Variation Rate variation	RevPar (in euros)	Variation Rate variation
TOTAL	67.2	1.7	37.8	11.4
Andalucía	66.3	-0.4	35.5	8.2
Aragón	58.1	-1.3	20.1	-4.5
Asturias, Principado de	60.3	3.0	20.7	12.3
Balears, Illes	55.0	-2.0	36.6	19.9
Canarias	75.6	6.7	57.2	30.8
Cantabria	58.7	1.8	21.7	7.7
Castilla y León	57.4	0.0	22.2	-1.7
Castilla - La Mancha	57.8	-6.1	19.3	-11.5
Cataluña	73.4	2.4	43.2	9.6
Comunitat Valenciana	54.3	0.1	30.2	8.2
Extremadura	59.6	-0.6	27.1	0.3
Galicia	53.4	3.2	17.4	-9.3
Madrid, Comunidad de	81.8	-0.6	54.0	3.9
Murcia, Región de	55.0	-6.8	23.6	-12.4
Navarra, Comunidad Foral de	62.8	0.4	24.5	3.5
País Vasco	70.9	0.8	40.6	8.8
Rioja, La	62.3	3.4	31.5	4.4
Ceuta	69.4	-5.8	36.2	-21.6
Melilla	62.1	-0.7	31.2	10.2

National ADR and RevPar and breakdown by categories

	ADR (in euros)	Variation Rate interannual	RevPar (in euros)	Variation Rate interannual
TOTAL	67.2	1.7	37.8	11.4
HOTELS: Gold stars				
Five	148.8	4.5	91.1	25.9
Four	73.6	-0.4	48.4	12.6
Three	52.1	-1.7	31.8	5.3
Two	50.2	1.8	21.0	2.8
One	50.0	5.0	16.7	4.5
GUESTHOUSES: Silver stars				
Three and two	42.9	-2.0	14.2	-3.2
One	36.2	1.0	11.6	3.5

Due to the updating in the establishments directory carried out in the Canary Islands in July 2010, in Navarra in January 2011 and in Extremadura in March 2011, the data to be published for Canary Islands, Navarra, Extremadura and the national total from those dates are not directly comparable with the data published last year, therefore, data link coefficients have been calculated to allow the comparison of data between different years. These coefficients are available in INE website (www.ine.es/en/welcome_en.htm)