

22 June 2012

Hotel Tourism Short-Term Trends (HOS/HPI/IPHS)
May 2012. Provisional data

Overnight stays in hotel establishments increase 0.4% in May, as compared with the same month in 2011

Hotels earn 34.3 euros per available room and invoice an average of 64.5 euros per occupied room

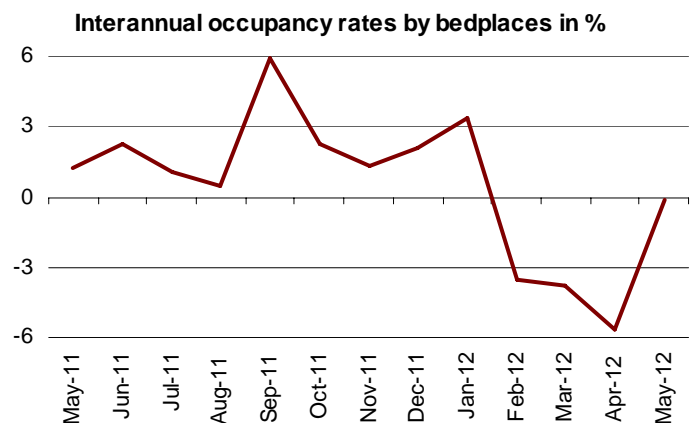
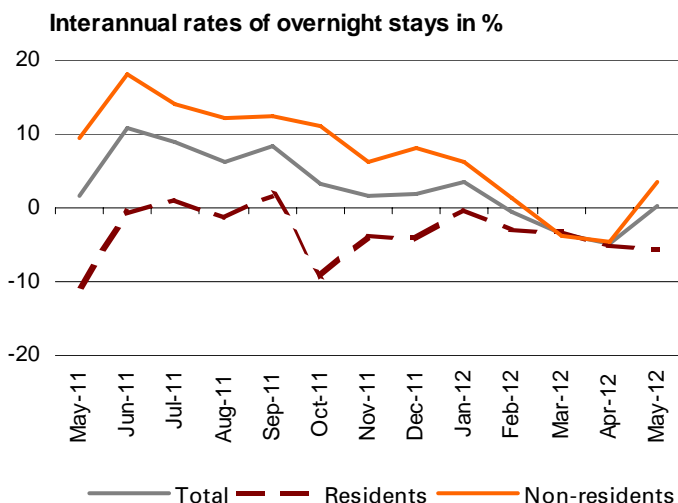
During the month of May, 24.7 million overnight stays were recorded in hotel establishments, indicating a 0.4% increase as compared with the same month in 2011. Overnight stays for residents decreases 5.6%, while for non-residents experienced an increase of 3.5%.

The average stay increased 0.8% as compared with April 2011, standing at 3.2 nights per guest.

During the first five months of the year, overnight decreased 1.4% as compared with the same period in 2011.

In turn, **the Hotel Price Index (HPI) registered a 0.7% decrease in May**. Regarding the indicators on the profitability of the hotel sector, invoicing per occupied room reached an average value of 64.5 euros, and income per available room stood at 34.3 euros.

In terms of occupancy, 48.6% of the available bedplaces were filled in May, indicating a 0.1% decrease as compared with the same month the previous year. The weekend occupancy rate by bedplaces stood at 54.9%, with an increase of 0.3%.

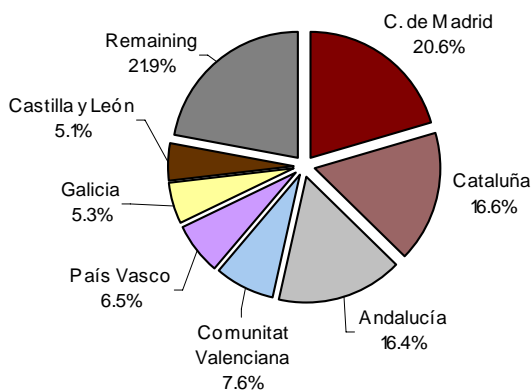


Overnight stays of guests resident abroad

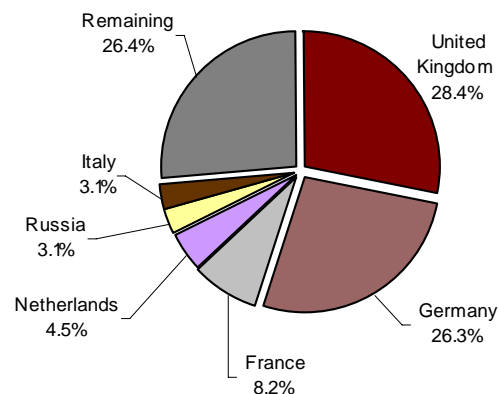
Guests from the United Kingdom and Germany registered rates of 28.4% and 26.3%, respectively, of the total overnight stays by foreign nationals in May. The British market experienced a 7.8% increase and the German market experienced a 1.7% interannual increase in overnight stays.

Overnight stays of guests from France, Netherlands and Russia (the following countries of origin) registered interannual rates of 7.1 %, 0.9% and 32.9%, respectively.

Overnight stays of guests resident in Spain by Autonomous Community of origin in %



Overnight stays of guests resident abroad by country of origin in %

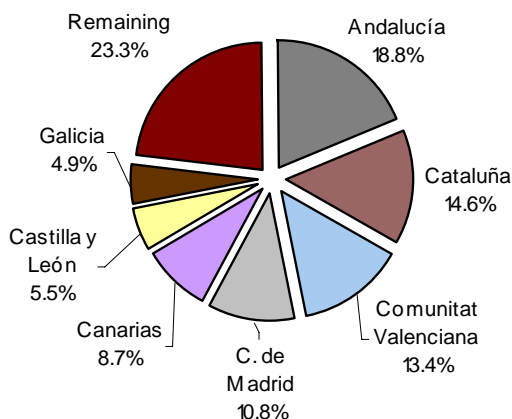


Main destinations

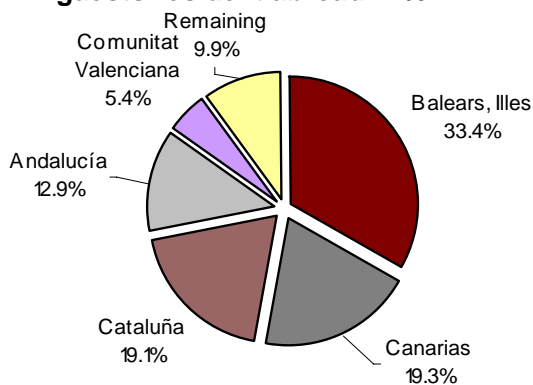
The main destination chosen by non-residents was Illes Balears. In this Autonomous Community, overnight stays by foreign nationals increased 6.2% as compared with May 2011. It was followed by Canarias, with an interannual rate of 1.9%, and Cataluña, with an increase of 5.8%.

Andalucía, Cataluña and Comunitat Valenciana were the main destinations of guests resident in Spain, with interannual rates for overnight stays of -7.8%, -1.8% and -1.9%, respectively.

Distribution of overnight stays of guests resident in Spain in %



Distribution of overnight stays of guests resident abroad in %



Results by Autonomous Community, tourist area and tourist site

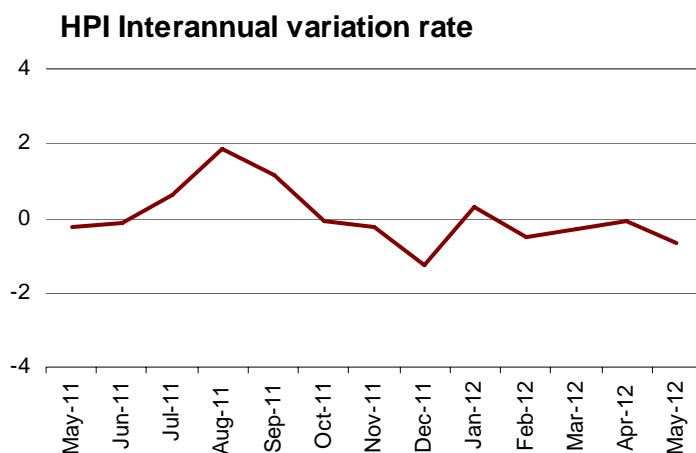
During the month of May, Illes Balears was the Autonomous Community with the highest occupancy rate by bedplaces (61.2%), followed by Canarias (57.3%) and Comunidad de Madrid (53.9%).

The tourist areas with the highest occupancy and overnight stay rates were located on the islands and the coasts. The zone of Barcelona recorded the highest occupancy rate by bedplaces (70.4%) and the highest weekend occupancy rate by bedplaces (79.5%). Mallorca registered more than 4.7 million overnight stays in May.

The tourist sites with the highest number of overnight stays were Barcelona, Madrid and Calvia. Benidorm reached the highest occupancy rate by bedplaces (74.1%) and the highest weekend occupancy (81.4%).

Evolution of the Hotel Price Index

The interannual rate of the HPI stood at -0.7% in May, this rate being 0.6 points lower than that obtained last month, and 0.5 points that registered one year ago.



HPI by Autonomous Community

The four Communities (Cataluña, Illes Balears, Andalucía and Canarias) that carried 67.8% of the total weight of the HPI in the month of May, showed uneven behaviour.

Cataluña, which carried the greatest load in the weighting structure this month, presented an interannual rate of 0.3%, that is, 3.4 points lower than that estimated in April. Hotel prices experienced an increase of 1.7% in Illes Balears, as compared with 3.1% of the previous month. In Andalucía, the interannual variation was -2.2% , as compared with the 0.1% observed last month. Canarias presented an interannual variation of 2.2%, that is, 2.0 points less than April.

HPI by category

Hotel prices increased in one-gold-star hotels (1.5%) and in five-gold-star hotels (1.2%) in May.

All other category presented a decrease in the interannual rate: three and two-silver-star hotels (-2.1%), three-gold-star (-1.7%), one-silver-star (-1.5%), two-gold-star (-0.7%) and four-gold-star hotels (-0.6%).

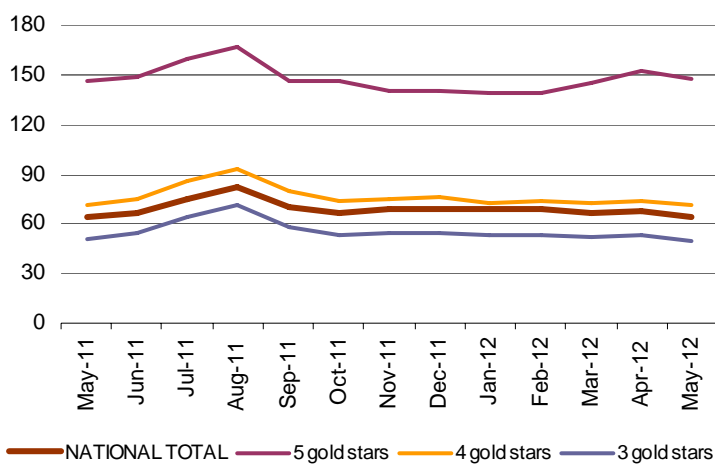
Indicators on the Profitability of the Hotel Sector

The average invoicing by hotels per occupied room (ADR) in May was 64.5 euros, indicating an increase of 0.2 euros as compared with the same month in 2011.

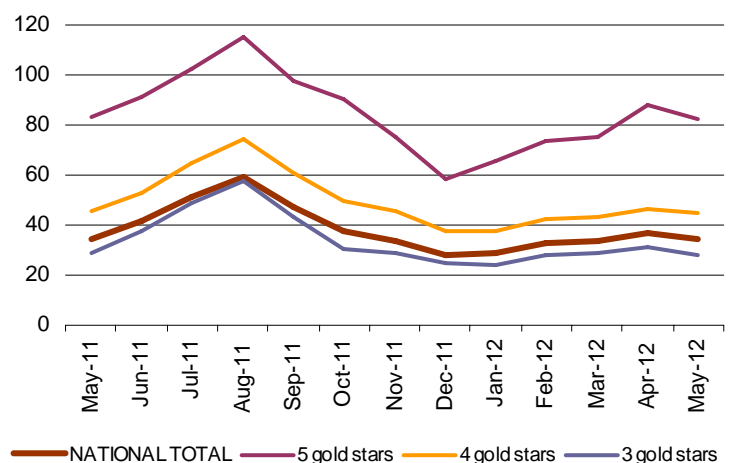
In turn, income per available room (RevPAR), conditioned by the occupancy registered in the hotel establishments, reached 34.3 euros, with a decrease of 0.3 euros as compared with May 2011.

By category, the average invoicing was 146.9 euros for five-star hotels, 71.4 euros for four-star hotels and 49.8 euros for three-star hotels. Income per available room for these same categories was 82.7, 45.1 and 28.0 euros, respectively.

ADR



RevPAR



For further information see INEbase-www.ine.es/en/welcome_en.htm All press releases at: www.ine.es/en/prensa/prensa_en.htm

Press Office: Telephone numbers: 91 583 93 63 / 94 08 – Fax: 91 583 90 87 - gprensa@ine.es

Information Area: Telephone number: 91 583 91 00 – Fax: 91 583 91 58 – www.ine.es/infoine/?L=1

Tourist Accommodation Occupancy Survey (Hotels and similar establishments)

May 2012

Provisional data

1. Travellers, overnight stays and average stay by categories of establishment

Category	Number of travellers			Number of overnight stays			Average stay
	Total	Residents in Spain	Residents abroad	Total	Residents in Spain	Residents abroad	
TOTAL	7,765,197	3,629,300	4,135,897	24,765,536	7,890,420	16,875,116	3.19
HOTELS: Golden stars							
Five	419,799	142,663	277,136	1,284,422	283,341	1,001,081	3.06
Four	3,397,092	1,532,427	1,864,665	11,246,130	3,294,947	7,951,183	3.31
Three	2,458,085	1,070,427	1,387,658	8,824,580	2,528,013	6,296,567	3.59
Two	575,030	343,931	231,099	1,430,918	725,818	705,100	2.49
One	212,186	126,023	86,163	452,556	230,845	221,711	2.13
INNS: Silver stars							
Two and three	385,208	232,292	152,916	838,032	427,460	410,571	2.18
One	317,797	181,536	136,261	688,897	399,996	288,902	2.17
Interannual rate	-0.41	-3.13	2.11	0.38	-5.62	3.46	0.80
Cumulative interannual rate	-1.05	-2.54	0.81	-1.40	-3.78	0.23	-0.35

2. Open establishments, capacity, occupancy and employed personnel by categories of establishment

Category	Estimated open establishments	Estimated bedplaces	Level of occupancy			Employed personnel
			Per bedplaces	Per bedplaces at weekend	Per rooms	
TOTAL	15,902	1,625,034	48.64	54.86	53.51	204,040
HOTELS: Golden stars						
Five	266	85,506	48.19	55.75	56.48	23,939
Four	2,151	652,553	55.12	62.26	63.16	92,308
Three	2,807	516,330	54.29	59.16	56.90	58,500
Two	2,008	127,044	35.97	43.57	40.19	10,612
One	1,240	52,193	27.89	33.63	32.80	4,176
INNS: Silver stars						
Two and three	3,196	102,542	26.21	32.26	29.89	8,092
One	4,233	88,866	24.92	29.39	29.24	6,414
Interannual rate	-0.54	0.40	-0.09	0.30	-0.90	-2.74

3. Travellers, overnight stays, occupancy, average stay and employed personnel

Results by areas and tourist sites

	Travellers		Overnight stays		Level of occupancy			Average stay	Employed personnel
	Residents in Spain	Residents abroad	Residents in Spain	Residents abroad	Per bedplac	Per bedplaces	Per rooms at weekend		

Tourist areas with a greater level of occupancy per month

Barcelona	130,187	502,706	243,403	1,288,180	70.44	79.51	81.16	2.42	12,018
Palma - Calvià	36,749	354,640	106,446	1,890,955	69.68	74.06	70.74	5.10	11,795
Isla de Mallorca	57,749	749,578	171,296	4,615,782	65.40	66.54	66.21	5.93	29,601
Sur de Tenerife	39,481	132,334	173,840	1,097,134	63.23	65.68	70.25	7.40	11,331
Sur de Gran Canaria	27,930	89,915	117,562	782,132	61.30	63.63	67.80	7.63	8,209
Isla de Tenerife	75,585	152,502	342,116	1,256,303	60.88	63.40	66.71	7.01	14,522
Costa de Gipuzkoa	31,277	31,336	54,000	56,790	60.19	76.69	68.53	1.77	989
Costa Blanca	154,023	126,827	588,715	652,631	59.74	68.55	62.91	4.42	7,811

Tourist areas with a greater number of overnight stays per month *

Costa del Sol	125,697	267,627	309,013	1,118,784	55.29	61.57	61.91	3.63	10,976
Isla de Gran Canaria	45,848	96,029	159,365	803,713	58.47	60.53	64.88	6.79	9,055
Costa Daurada	108,191	126,561	281,889	617,980	52.70	61.23	55.66	3.83	4,853
Costa Brava	104,344	182,561	210,748	657,222	42.33	53.60	45.51	3.03	6,342
Islas de Ibiza-Formentera	26,099	129,673	85,963	727,063	49.97	52.07	49.97	5.22	6,142
Isla de Fuerteventura	7,428	79,986	28,740	678,518	51.43	53.39	62.33	8.09	6,166
Isla de Lanzarote	26,826	56,409	135,157	459,500	57.92	56.38	63.30	7.14	4,822
Costa de la Luz de Cádiz	96,365	57,978	225,688	237,722	39.48	48.58	48.28	3.00	4,120

Tourist sites with a greater level of occupancy per month

Benidorm	73,045	82,500	406,551	496,264	74.09	81.42	75.46	5.80	5,070
Santa Margalida	1,857	40,025	6,039	302,794	72.33	75.94	78.08	7.37	1,717
Palma	31,014	168,169	81,808	805,572	71.56	81.19	78.34	4.46	5,711
Barcelona	121,273	486,580	217,499	1,249,575	70.57	79.49	81.00	2.41	11,710
Alcúdia	1,591	55,514	5,582	412,026	68.98	57.37	58.65	7.31	3,260
Córdoba	49,419	42,897	86,032	61,485	68.68	80.64	72.31	1.60	922
Muro	1,921	50,844	6,132	353,298	68.26	76.84	82.39	6.81	2,034
Calvià	5,784	178,869	26,493	1,023,794	68.10	69.38	65.38	5.69	5,805
Torremolinos	26,476	70,238	72,771	361,129	68.01	71.47	71.05	4.49	2,656
Pollença	953	14,292	2,548	100,834	67.68	68.65	70.87	6.78	814

Tourist sites with a greater number of overnight stays per month *

Madrid	375,951	372,774	625,320	836,280	58.30	70.22	70.70	1.95	12,185
San Bartolomé De Tirajana	21,818	71,262	90,563	638,645	62.40	64.52	69.19	7.83	6,825
Adeje	21,086	70,002	98,391	604,782	64.51	68.12	71.56	7.72	6,339
Salou	43,998	82,193	146,289	440,677	62.55	69.76	62.65	4.65	2,601
Pájara	3,151	48,781	13,613	440,320	51.44	53.77	60.66	8.74	4,110
Lloret De Mar	20,447	79,153	60,368	354,229	53.04	58.98	55.79	4.16	2,151
Arona	6,187	41,484	33,325	341,619	66.14	65.88	71.05	7.87	2,918
Sevilla	86,230	112,887	149,653	225,162	63.41	72.44	72.10	1.88	2,980
Sant Llorenç Des Cardassar	983	55,584	11,035	351,244	53.29	51.90	56.17	6.40	2,313
Yaiza	14,438	27,502	83,904	214,822	59.87	57.29	63.50	7.12	2,462

* Not taken into account those included in the preceding table because they are in the bigger level of occupancy tables too.

4. Travellers, overnight stays and average stay

Results by Autonomous Cities and Communities and provinces

	Number of travellers			Overnight stays			Average stay
	Total	Residents in Spain	Residents abroad	Total	Residents in Spain	Residents abroad	
TOTAL	7,765,197	3,629,300	4,135,897	24,765,536	7,890,420	16,875,116	3.19
Andalucía	1,404,560	684,951	719,609	3,660,265	1,479,733	2,180,533	2.61
Almería	66,561	52,334	14,228	217,113	154,476	62,637	3.26
Cádiz	199,216	118,896	80,320	548,281	266,614	281,667	2.75
Córdoba	112,380	66,385	45,995	184,059	117,964	66,095	1.64
Granada	205,091	95,661	109,431	411,986	198,143	213,843	2.01
Huelva	78,547	50,708	27,840	242,749	131,579	111,170	3.09
Jaén	45,626	37,550	8,076	76,326	63,448	12,879	1.67
Málaga	434,860	144,001	290,858	1,496,224	336,166	1,160,057	3.44
Sevilla	262,279	119,417	142,862	483,527	211,343	272,184	1.84
Aragón	160,461	125,638	34,823	293,122	237,868	55,254	1.83
Huesca	36,579	26,732	9,847	73,496	57,260	16,237	2.01
Teruel	26,323	22,306	4,017	44,774	37,995	6,779	1.70
Zaragoza	97,559	76,600	20,959	174,852	142,614	32,238	1.79
Asturias, Principado de	112,565	94,288	18,277	220,028	186,989	33,039	1.95
Balears, Illes	1,013,563	92,232	921,331	5,930,421	290,990	5,639,431	5.85
Canarias	555,609	163,194	392,415	3,933,345	682,561	3,250,784	7.08
Palmas, Las	312,526	80,102	232,424	2,264,994	323,263	1,941,732	7.25
Santa Cruz de Tenerife	243,083	83,092	159,991	1,668,350	359,298	1,309,052	6.86
Cantabria	83,012	64,206	18,806	179,525	143,669	35,857	2.16
Castilla y León	358,974	261,564	97,411	572,110	435,646	136,464	1.59
Ávila	20,416	16,369	4,046	32,108	24,788	7,320	1.57
Burgos	64,762	40,030	24,732	99,720	67,900	31,820	1.54
León	64,253	42,817	21,436	97,731	70,707	27,023	1.52
Palencia	17,912	12,384	5,529	27,137	20,744	6,393	1.52
Salamanca	76,784	53,587	23,197	133,432	97,857	35,574	1.74
Segovia	32,013	24,903	7,110	47,876	37,402	10,474	1.50
Soria	14,796	13,494	1,302	26,551	24,379	2,172	1.79
Valladolid	49,154	41,916	7,238	76,835	64,841	11,994	1.56
Zamora	18,884	16,064	2,819	30,721	27,028	3,693	1.63
Castilla-La Mancha	156,937	121,993	34,944	270,095	212,807	57,289	1.72
Albacete	26,173	23,617	2,556	56,366	51,882	4,484	2.15
Ciudad Real	26,824	23,873	2,951	47,214	42,421	4,793	1.76
Cuenca	23,443	18,511	4,933	36,799	29,092	7,707	1.57
Guadalajara	20,738	17,098	3,640	35,356	28,649	6,707	1.70
Toledo	59,759	38,894	20,865	94,361	60,763	33,599	1.58
Cataluña	1,562,349	557,783	1,004,566	4,377,296	1,151,945	3,225,351	2.80
Barcelona	938,972	260,493	678,479	2,437,512	515,263	1,922,249	2.60
Girona	302,704	116,989	185,715	891,367	228,949	662,418	2.94
Lleida	53,301	43,715	9,586	90,827	76,041	14,786	1.70
Tarragona	267,371	136,585	130,786	957,589	331,691	625,898	3.58
Comunitat Valenciana	597,847	367,029	230,818	1,972,338	1,058,120	914,218	3.30
Alicante/Alacant	295,015	164,367	130,647	1,269,011	606,044	662,967	4.30
Castellón/Castelló	76,887	59,932	16,955	229,520	166,895	62,625	2.99
Valencia/València	225,945	142,730	83,216	473,807	285,181	188,626	2.10
Extremadura	111,569	90,955	20,614	207,025	175,164	31,861	1.86
Badajoz	58,443	48,407	10,036	103,866	88,773	15,093	1.78
Cáceres	53,126	42,548	10,579	103,159	86,391	16,768	1.94
Galicia	272,486	182,252	90,234	526,290	385,144	141,146	1.93
Coruña, A	127,738	74,848	52,890	240,388	155,255	85,133	1.88
Lugo	48,803	29,251	19,553	72,513	50,199	22,314	1.49
Ourense	22,519	19,870	2,649	40,747	35,770	4,977	1.81
Pontevedra	73,426	58,284	15,142	172,643	143,921	28,722	2.35
Madrid, Comunidad de	931,823	521,403	410,420	1,764,645	855,873	908,772	1.89
Murcia, Región de	91,127	75,423	15,704	217,206	174,195	43,011	2.38
Navarra, Comunidad Foral de	75,775	52,239	23,536	130,677	93,312	37,365	1.72
País Vasco	218,056	133,043	85,013	407,120	249,625	157,495	1.87
Araba/Álava	29,307	21,334	7,972	55,054	40,168	14,885	1.88
Bizkaia	104,803	66,534	38,270	195,623	123,502	72,122	1.87
Gipuzkoa	83,945	45,175	38,771	156,443	85,955	70,488	1.86
Rioja, La	48,246	33,614	14,632	80,681	58,015	22,666	1.67
Ceuta	6,111	4,224	1,887	12,836	9,638	3,199	2.10
Melilla	4,127	3,269	858	10,509	9,128	1,382	2.55

5. Establishment, capacity, occupancy and employed personnel

Results by Autonomous Cities and Communities and provinces

	Estimated open establishments	Estimated bedplaces	Level of occupancy			Employed personnel
			Per bedplaces	Per bedplaces at weekends	Per rooms	
TOTAL	15,902	1,625,034	48.64	54.86	53.51	204,040
Andalucía	2,573	267,491	43.80	52.16	51.26	31,529
Almería	188	29,013	24.06	28.36	29.70	2,220
Cádiz	468	45,469	38.68	47.91	46.76	5,202
Córdoba	201	11,306	52.03	63.44	57.29	1,372
Granada	413	28,708	46.04	53.99	50.89	3,018
Huelva	160	25,868	29.81	47.64	42.18	2,702
Jaén	191	9,438	25.99	34.79	30.62	1,096
Málaga	618	90,571	52.93	59.36	59.41	12,184
Sevilla	334	27,120	56.81	64.42	63.08	3,736
Aragón	800	36,409	25.84	35.30	30.60	3,558
Huesca	286	11,593	20.39	27.57	24.37	963
Teruel	213	6,960	20.59	30.75	24.00	725
Zaragoza	301	17,856	31.43	42.09	36.81	1,870
Asturias, Principado de	622	26,746	26.46	34.54	31.60	2,821
Balears, Illes	1,106	307,193	61.24	61.91	61.66	38,150
Canarias	500	220,080	57.28	59.00	64.06	35,410
Palmas, Las	256	129,827	55.95	57.05	63.65	20,042
Santa Cruz de Tenerife	244	90,253	59.20	61.80	64.63	15,367
Cantabria	381	17,831	32.38	37.63	33.88	2,212
Castilla y León	1,404	61,441	29.89	39.96	34.13	7,618
Ávila	111	5,131	20.11	32.58	23.06	620
Burgos	215	9,121	35.10	38.93	37.63	1,030
León	281	10,763	29.21	37.50	35.35	1,191
Palencia	91	3,329	26.23	31.54	32.42	334
Salamanca	215	11,587	36.87	53.46	40.14	1,463
Segovia	139	5,907	25.96	36.81	26.17	739
Soria	124	3,915	21.77	26.87	25.33	460
Valladolid	138	8,231	29.97	44.12	37.00	1,234
Zamora	91	3,457	28.56	34.43	34.92	547
Castilla-La Mancha	851	35,304	24.60	32.18	29.08	3,441
Albacete	177	7,559	24.04	30.66	28.68	745
Ciudad Real	187	7,743	19.64	22.87	25.59	732
Cuenca	155	5,578	21.24	29.36	23.88	580
Guadalajara	133	4,761	23.92	29.09	27.93	401
Toledo	201	9,663	31.31	43.99	35.70	983
Cataluña	2,240	269,463	51.65	60.43	57.60	31,875
Barcelona	1,014	127,560	61.12	68.70	69.91	18,301
Girona	646	68,922	40.77	52.39	43.85	6,892
Lleida	288	14,203	20.59	27.10	22.46	1,311
Tarragona	292	58,778	51.37	59.95	53.88	5,370
Comunitat Valenciana	1,045	126,531	49.70	57.63	53.43	14,169
Alicante/Alacant	477	70,375	57.34	65.87	60.31	8,217
Castellón/Castelló	196	19,154	38.43	46.03	41.79	1,969
Valencia/València	371	37,002	41.02	47.97	46.10	3,982
Extremadura	456	20,584	32.35	38.42	36.63	2,636
Badajoz	212	10,085	33.13	35.48	37.83	1,203
Cáceres	244	10,499	31.60	41.24	35.47	1,433
Galicia	1,574	64,704	26.17	30.47	30.79	6,861
Coruña, A	648	26,237	29.47	31.53	35.25	2,539
Lugo	323	9,845	23.69	24.47	26.70	985
Ourense	192	6,270	20.88	25.61	24.35	663
Pontevedra	410	22,352	24.86	33.24	29.14	2,674
Madrid, Comunidad de	1,181	105,006	53.94	65.99	64.74	14,735
Murcia, Región de	193	18,715	37.12	49.35	42.01	2,369
Navarra, Comunidad Foral de	299	12,754	32.97	38.81	39.47	1,428
País Vasco	519	27,039	48.15	58.41	58.61	4,057
Araba/Álava	77	4,562	38.59	51.15	50.02	606
Bizcaia	204	12,987	48.25	55.82	60.39	1,981
Gipuzkoa	238	9,491	52.61	65.44	60.23	1,471
Rioja, La	135	6,072	42.64	60.44	50.75	877
Ceuta	12	819	50.54	52.96	49.60	141
Melilla	11	851	39.82	61.15	56.35	154

6. Percentage distribution of Spanish travellers in each province by Autonomous City and Community of origin

Results by provinces

(Continued)

Provincias	Total	Andalucía	Aragón	Asturias, P. de	Balears, Illes	Canarias	Cantabria	Castilla y León	Castilla-La Mancha	Cataluña
TOTAL	100	16.75	2.65	2.71	1.76	3.00	1.48	4.89	3.58	17.92
Albacete	100	8.41	1.66	1.60	0.54	0.45	0.65	3.82	18.97	6.18
Alicante/Alacant	100	5.10	1.63	2.41	1.00	1.02	0.40	3.25	9.68	7.40
Almería	100	47.73	0.27	0.73	0.38	0.21	0.10	1.22	2.33	6.09
Araba/Álava	100	4.67	5.93	2.78	0.66	0.50	2.17	8.12	1.94	16.90
Asturias	100	4.99	2.18	18.62	1.25	1.15	4.00	10.19	4.56	5.37
Ávila	100	5.17	1.31	2.09	0.84	1.37	1.07	14.33	7.31	5.51
Badajoz	100	23.97	0.93	2.19	0.87	1.17	1.27	5.14	3.78	5.44
Balears, Illes	100	11.13	0.55	1.66	27.18	0.90	0.97	1.49	1.05	25.22
Barcelona	100	6.50	2.53	1.34	2.31	1.81	1.68	2.79	1.62	42.41
Bizkaia	100	6.76	2.72	3.22	0.98	1.24	2.76	5.23	2.33	14.89
Burgos	100	4.19	2.25	2.28	0.69	1.22	3.14	19.41	3.46	10.20
Cáceres	100	14.87	1.41	3.01	0.50	1.66	1.15	8.40	4.70	5.89
Cádiz	100	61.93	0.55	0.79	0.64	0.64	0.48	2.06	3.23	4.48
Cantabria	100	7.78	2.84	7.79	0.46	2.22	9.80	10.38	3.42	7.83
Castellón/Castelló	100	2.50	4.17	0.69	0.52	0.21	0.62	1.88	5.17	27.69
Ciudad Real	100	16.34	1.59	2.30	0.43	0.54	0.45	5.15	17.30	6.84
Córdoba	100	42.36	0.94	1.33	1.04	0.96	0.72	2.12	5.85	8.65
Coruña, A	100	5.42	1.09	5.58	1.17	1.85	1.22	5.96	1.72	10.95
Cuenca	100	5.34	1.58	0.90	0.81	0.85	0.77	4.41	11.79	6.67
Gipuzkoa	100	4.99	4.06	3.27	0.56	0.80	2.18	5.72	1.80	19.18
Girona	100	3.10	0.89	0.38	0.46	0.19	0.30	1.22	0.99	82.50
Granada	100	49.39	1.03	0.91	0.92	1.88	0.22	3.53	2.61	5.74
Guadalajara	100	6.14	2.83	3.94	0.73	1.64	0.47	4.10	14.56	10.24
Huelva	100	64.31	0.62	0.72	0.73	1.22	0.70	2.10	3.36	3.39
Huesca	100	4.37	22.97	1.28	0.62	2.08	1.04	2.76	3.54	31.26
Jaén	100	56.66	0.92	0.34	1.45	1.63	0.48	2.55	3.55	5.68
León	100	3.37	2.05	9.24	0.59	1.20	4.21	22.11	2.18	6.79
Lleida	100	4.61	2.16	0.72	0.36	1.24	0.16	2.81	0.76	75.24
Lugo	100	6.77	0.99	7.97	0.85	1.14	1.71	5.98	1.66	7.51
Madrid	100	13.54	2.52	3.27	1.84	3.82	1.81	4.69	2.78	13.56
Málaga	100	62.57	0.90	0.44	0.73	1.45	0.48	1.36	2.85	5.24
Murcia	100	11.52	1.08	1.07	0.86	0.58	0.43	2.28	8.15	8.55
Navarra	100	5.54	7.69	2.62	0.82	0.78	1.95	4.99	3.95	18.94
Ourense	100	2.32	0.35	2.82	0.27	0.71	1.01	6.10	1.15	3.02
Palencia	100	3.05	2.53	6.85	0.51	0.72	5.56	22.43	2.34	7.14
Palmas, Las	100	12.00	0.60	1.80	0.92	37.98	0.44	2.65	0.59	7.53
Pontevedra	100	2.81	0.79	7.38	1.07	1.07	2.58	10.11	3.17	5.56
Rioja, La	100	5.45	6.32	3.40	1.69	1.21	4.38	5.62	2.26	17.13
Salamanca	100	6.28	1.90	5.05	0.86	1.58	2.40	17.50	4.39	5.26
S. C. Tenerife	100	11.18	0.45	0.99	0.57	29.67	0.73	1.01	0.74	4.48
Segovia	100	4.63	2.36	3.61	0.78	0.51	1.29	14.64	5.18	7.47
Sevilla	100	44.49	1.47	1.23	0.71	2.55	0.76	2.58	2.14	9.11
Soria	100	2.46	8.26	2.81	0.83	0.81	1.61	14.39	2.69	10.26
Tarragona	100	2.24	6.71	0.66	0.59	0.55	0.77	1.14	1.28	60.29
Teruel	100	2.54	17.08	0.59	0.59	0.31	1.41	1.72	4.66	19.34
Toledo	100	10.76	2.74	1.78	0.67	0.84	1.74	6.64	14.07	8.38
Valencia/València	100	7.29	2.73	0.96	1.63	0.90	0.77	2.62	5.41	14.57
Valladolid	100	6.42	1.44	4.91	0.46	0.62	2.21	20.49	2.26	11.21
Zamora	100	3.70	2.23	4.89	2.77	0.50	2.42	18.35	3.47	5.23
Zaragoza	100	5.32	15.18	1.74	1.04	0.91	2.01	7.79	2.62	21.47
Ceuta	100	55.42	-	0.84	3.24	0.84	3.13	0.63	1.25	2.09
Melilla	100	42.98	3.60	0.78	0.47	2.14	0.70	7.39	1.10	4.79

6. Percentage distribution of Spanish travellers in each province by Autonomous City and Community of origin

Results by provinces

(Conclusion)

Provinces	Comunitat Valenciana	Extremadura	Galicia	Madrid, C. de	Murcia, Región de	Navarra, C. Foral de	País Vasco	Rioja, La	Ceuta	Melilla
TOTAL	8.22	1.79	5.33	19.32	2.25	1.27	5.99	0.72	0.22	0.15
Albacete	23.15	1.37	1.94	21.27	7.00	0.70	1.69	0.37	0.08	0.15
Alicante/Alacant	37.40	0.85	2.00	17.65	3.28	1.36	4.83	0.48	0.20	0.06
Almería	10.36	0.17	0.58	10.80	16.52	0.83	1.20	0.21	0.13	0.15
Araba/Álava	4.43	0.54	4.68	20.74	0.47	1.93	22.62	0.80	0.05	0.04
Asturias	1.80	0.85	12.74	20.71	0.97	1.42	8.66	0.46	0.07	0.02
Ávila	3.69	3.38	7.56	40.53	1.43	0.81	3.10	0.28	0.19	0.03
Badajoz	5.70	18.83	3.27	21.65	1.16	0.81	3.10	0.49	0.21	0.01
Balears, Illes	5.52	0.23	2.11	18.32	0.64	0.32	2.33	0.26	0.04	0.06
Barcelona	6.62	0.71	2.56	15.95	1.26	1.27	7.09	1.02	0.37	0.16
Bizkaia	4.39	0.70	4.31	22.54	0.75	2.64	23.46	1.01	0.07	-
Burgos	2.88	0.88	7.47	28.71	1.24	1.79	8.76	1.36	0.07	0.00
Cáceres	3.38	13.80	5.43	28.60	1.22	0.48	5.02	0.38	0.10	-
Cádiz	2.22	2.59	1.01	14.14	1.05	0.51	2.32	0.19	0.98	0.19
Cantabria	4.04	1.00	5.54	19.39	1.22	1.62	13.58	1.07	0.01	0.01
Castellón/Castelló	31.84	0.52	0.70	14.67	1.69	0.98	5.66	0.41	0.08	-
Ciudad Real	8.41	3.17	1.53	26.71	4.12	0.60	3.99	0.46	0.08	-
Córdoba	5.02	2.65	1.39	21.36	2.19	0.46	2.20	0.27	0.34	0.13
Coruña, A	3.62	0.64	37.87	16.29	0.94	1.08	3.98	0.56	0.06	0.01
Cuenca	16.22	1.21	2.68	36.86	2.93	0.85	4.65	1.46	-	-
Gipuzkoa	3.25	0.42	5.22	20.58	0.40	3.23	22.14	2.11	0.06	0.03
Girona	2.73	0.22	0.71	3.33	0.74	0.29	1.44	0.29	0.11	0.14
Granada	5.46	1.20	1.69	17.54	4.48	0.20	1.70	0.76	0.38	0.36
Guadalajara	5.96	2.68	2.42	37.35	1.40	1.38	3.51	0.53	0.10	0.03
Huelva	1.30	6.16	1.45	9.70	1.38	0.26	2.12	0.19	0.21	0.08
Huesca	4.67	0.84	1.19	13.17	1.45	1.88	6.37	0.52	-	-
Jaén	5.62	0.78	0.77	15.43	2.33	0.23	1.34	0.10	0.15	-
León	2.45	1.19	13.79	20.91	0.60	1.19	6.50	1.45	0.06	0.12
Lleida	2.95	0.23	0.75	4.37	0.39	1.04	1.76	0.39	0.03	0.02
Lugo	2.48	0.94	41.67	14.02	1.05	1.19	2.98	0.97	0.10	0.04
Madrid	7.75	2.13	5.03	21.91	2.60	1.54	9.79	0.94	0.20	0.28
Málaga	3.23	1.89	0.90	12.81	1.13	0.55	1.89	0.22	0.56	0.79
Murcia	19.45	0.63	1.67	19.76	21.06	0.69	1.71	0.39	0.09	0.02
Navarra	5.41	0.88	4.50	18.08	0.74	9.36	12.01	1.53	0.12	0.08
Ourense	1.64	0.39	65.59	10.97	0.29	0.25	2.44	0.63	-	0.05
Palencia	4.59	0.95	7.11	20.33	0.76	4.68	9.98	0.46	-	-
Palmas, Las	0.94	0.47	2.68	26.31	0.21	0.58	4.08	0.07	0.01	0.13
Pontevedra	2.61	1.04	40.22	15.07	0.70	1.50	3.95	0.24	0.08	0.04
Rioja, La	5.49	0.34	3.88	20.93	1.04	2.69	14.11	3.98	0.07	-
Salamanca	3.22	4.75	7.39	29.43	0.74	1.60	6.04	1.54	0.08	-
S. C. Tenerife	1.62	0.96	1.28	39.81	0.26	0.36	5.64	0.12	0.04	0.09
Segovia	3.25	1.43	7.08	39.33	1.95	0.86	4.95	0.61	0.08	-
Sevilla	3.78	3.15	1.61	20.90	1.29	0.68	2.57	0.43	0.39	0.16
Soria	3.33	1.13	8.30	30.26	0.38	4.26	6.56	1.58	0.06	-
Tarragona	7.48	0.32	0.99	7.40	0.75	2.27	5.09	0.97	0.25	0.26
Teruel	22.65	0.60	0.89	17.82	2.75	0.79	4.46	1.75	0.07	-
Toledo	8.27	3.11	3.91	25.05	3.56	1.36	4.98	1.01	1.10	0.01
Valencia/València	25.67	1.66	2.31	26.66	3.05	0.66	2.48	0.43	0.12	0.10
Valladolid	4.28	2.23	8.34	27.32	0.55	0.84	5.85	0.56	0.02	0.01
Zamora	3.79	2.55	13.53	26.30	0.58	0.93	7.58	0.94	0.25	-
Zaragoza	6.11	1.11	2.98	19.63	1.19	2.19	6.89	1.65	0.06	0.10
Ceuta	3.13	-	0.94	19.85	0.73	0.63	1.25	-	4.98	1.04
Melilla	3.69	0.73	6.11	15.13	1.59	0.37	1.60	0.12	1.36	5.35

7. Percentage distribution of overnight stays in each province by Autonomous City and Community of origin

Results by provinces

(Continued)

Provinces	Total	Andalucía	Aragón	Asturias, P. de	Balears, Illes	Canarias	Cantabria	Castilla y León	Castilla-La Mancha	Cataluña
TOTAL	100	16.44	2.64	3.12	1.83	3.22	1.36	5.10	3.56	16.63
Albacete	100	12.37	1.80	1.11	0.43	0.40	0.38	2.83	22.22	5.27
Alicante/Alacant	100	4.61	2.43	6.93	0.49	0.77	0.95	4.78	7.23	6.56
Almería	100	42.05	0.49	1.95	0.28	0.18	0.16	2.16	1.71	10.83
Araba/Álava	100	4.53	5.87	2.57	0.74	0.60	2.09	7.68	1.59	16.07
Asturias	100	6.98	3.17	15.29	0.79	1.77	2.90	10.00	6.20	6.34
Ávila	100	5.18	1.83	1.96	0.76	1.14	1.00	16.89	6.52	6.75
Badajoz	100	25.76	1.15	2.02	1.25	1.40	1.11	4.05	3.45	5.73
Balears, Illes	100	13.94	0.71	1.94	20.61	1.11	1.04	2.25	1.18	24.90
Barcelona	100	7.76	2.00	1.79	2.41	1.89	1.61	3.03	2.00	41.43
Bizkaia	100	7.01	2.41	2.89	0.89	1.72	2.81	5.09	2.52	17.34
Burgos	100	5.27	1.98	2.39	1.87	1.27	2.83	21.83	2.68	10.69
Cáceres	100	17.52	1.37	2.49	0.80	1.76	0.88	7.64	4.26	5.68
Cádiz	100	55.75	0.56	2.31	0.89	0.74	0.61	2.98	4.02	4.72
Cantabria	100	10.32	4.18	5.93	1.20	2.84	7.85	8.05	4.20	9.72
Castellón/Castelló	100	2.19	4.07	0.68	0.81	0.17	0.41	2.03	4.50	24.55
Ciudad Real	100	16.37	1.05	2.71	0.42	0.53	0.54	4.58	18.44	7.69
Córdoba	100	41.01	0.98	1.57	2.00	1.12	1.26	2.20	5.25	9.31
Coruña, A	100	5.82	0.89	5.54	0.94	1.80	1.54	6.98	1.46	9.42
Cuenca	100	4.88	1.70	0.71	0.66	0.83	0.56	3.88	14.89	7.98
Gipuzkoa	100	5.44	3.85	3.57	0.54	1.15	1.70	5.27	1.87	20.27
Girona	100	4.24	1.69	0.44	0.50	0.13	0.40	1.57	3.55	73.37
Granada	100	44.76	1.54	0.88	1.04	2.84	0.29	5.65	3.65	6.84
Guadalajara	100	6.34	2.22	4.84	0.49	1.77	0.94	4.83	17.23	9.09
Huelva	100	59.57	1.52	1.38	0.45	0.96	0.57	4.50	3.86	4.92
Huesca	100	5.18	19.98	0.90	0.52	3.30	1.12	2.63	3.83	28.75
Jaén	100	51.60	0.80	0.27	1.32	2.61	0.52	3.29	4.09	5.14
León	100	3.35	2.41	7.05	0.51	1.20	3.65	28.03	2.02	6.50
Lleida	100	5.47	2.36	1.17	0.50	1.53	0.12	5.00	0.81	70.89
Lugo	100	7.48	0.66	7.49	0.54	0.97	1.66	5.86	1.76	6.23
Madrid	100	13.86	2.52	3.45	1.94	4.80	1.87	4.73	2.52	13.78
Málaga	100	58.83	0.83	0.63	0.53	2.25	0.40	1.56	2.34	4.47
Murcia	100	10.48	1.08	1.55	0.98	0.55	0.60	5.10	7.08	8.49
Navarra	100	5.73	7.79	3.18	1.57	1.01	1.94	5.30	4.05	18.06
Ourense	100	2.37	0.40	4.56	0.25	0.67	0.76	5.54	1.73	3.41
Palencia	100	3.52	1.93	6.69	0.45	0.77	5.27	20.38	2.29	6.56
Palmas, Las	100	12.59	0.63	3.49	1.35	23.46	0.43	3.39	0.50	9.03
Pontevedra	100	2.25	0.63	8.24	1.47	1.35	2.55	12.63	5.31	4.53
Rioja, La	100	7.80	5.66	4.89	1.90	1.49	3.77	6.43	2.33	15.12
Salamanca	100	6.46	2.05	7.41	0.71	1.77	2.08	21.64	3.54	4.26
S. C. Tenerife	100	9.62	0.49	1.44	0.96	15.31	0.86	2.47	0.73	4.49
Segovia	100	5.34	3.55	3.69	0.84	0.50	1.52	14.07	4.69	8.76
Sevilla	100	42.85	1.57	1.53	0.80	2.71	0.92	2.44	1.98	10.56
Soria	100	3.07	6.37	2.94	0.66	0.54	1.80	14.75	5.84	12.01
Tarragona	100	3.04	6.17	1.19	0.52	0.94	0.97	2.46	1.24	50.39
Teruel	100	2.53	21.64	0.50	0.49	0.26	1.45	1.83	5.15	17.76
Toledo	100	12.09	3.78	2.38	0.77	0.88	1.73	7.43	12.86	9.02
Valencia/València	100	7.90	3.02	1.20	1.85	0.84	0.89	2.98	4.76	15.23
Valladolid	100	6.63	1.75	4.93	0.43	0.72	1.80	18.86	2.19	12.10
Zamora	100	4.40	1.79	3.84	3.19	0.84	4.25	18.50	3.71	4.37
Zaragoza	100	5.52	17.84	1.65	1.14	1.12	2.02	7.52	2.51	19.15
Ceuta	100	58.14	-	0.85	2.17	1.06	3.22	0.42	0.85	1.27
Melilla	100	49.51	9.37	1.01	0.26	2.19	0.43	6.17	0.79	2.92

7. Percentage distribution of overnight stays in each province by Autonomous City and Community of origin

Results by provinces

(Conclusion)

Provinces	Comunitat Valenciana	Extremadura	Galicia	Madrid, C. de	Murcia, Región de	Navarra, C. Foral de	País Vasco	Rioja, La	Ceuta	Melilla
TOTAL	7.64	1.70	5.31	20.58	1.96	1.41	6.47	0.68	0.18	0.14
Albacete	18.71	1.50	1.58	23.08	6.19	0.67	1.11	0.23	0.04	0.09
Alicante/Alacant	25.40	1.10	2.74	16.88	2.04	3.53	12.55	0.90	0.10	0.02
Almería	8.93	0.17	0.99	15.18	11.84	0.75	1.95	0.18	0.12	0.07
Araba/Álava	5.30	0.44	4.38	20.30	0.53	1.31	25.29	0.63	0.06	0.02
Asturias	2.62	0.78	13.24	19.89	1.09	1.31	7.12	0.44	0.07	0.01
Ávila	3.52	2.81	6.98	39.07	1.23	0.96	2.92	0.23	0.23	0.02
Badajoz	5.10	20.65	4.02	19.37	1.15	0.68	2.45	0.51	0.12	0.01
Balears, Illes	5.03	0.66	2.68	19.50	0.74	0.35	3.08	0.21	0.03	0.04
Barcelona	5.68	1.04	3.03	15.67	1.29	1.56	6.45	0.88	0.33	0.16
Bizkaia	4.62	0.75	4.83	21.84	0.80	2.17	21.56	0.68	0.08	-
Burgos	3.18	0.93	7.50	26.21	0.96	1.59	7.55	1.23	0.05	0.00
Cáceres	3.88	14.21	4.96	26.97	1.02	0.43	4.55	0.36	1.21	-
Cádiz	2.35	2.03	1.02	15.10	0.94	0.61	4.07	0.20	0.80	0.32
Cantabria	3.81	0.99	6.01	21.13	2.09	1.11	9.67	0.89	0.01	0.01
Castellón/Castelló	32.18	0.29	1.27	17.93	2.24	1.88	4.19	0.56	0.06	-
Ciudad Real	7.21	3.77	1.40	27.37	3.50	0.48	3.37	0.55	0.04	-
Córdoba	5.44	2.35	2.05	19.81	1.98	0.50	2.50	0.25	0.26	0.16
Coruña, A	3.03	0.49	39.46	15.59	0.86	1.16	4.50	0.43	0.09	0.01
Cuenca	18.63	1.02	2.27	31.87	2.14	0.73	5.37	1.88	-	-
Gipuzkoa	3.30	0.46	4.67	21.91	0.38	2.47	21.06	2.03	0.04	0.03
Girona	4.19	0.21	1.40	4.33	0.50	0.58	2.50	0.25	0.08	0.07
Granada	5.36	1.69	1.72	16.35	3.45	0.35	2.26	0.68	0.26	0.38
Guadalajara	6.55	3.00	2.57	33.52	1.30	1.44	3.37	0.38	0.09	0.02
Huelva	1.15	4.41	1.53	10.54	1.46	0.53	2.14	0.28	0.19	0.03
Huesca	4.91	0.78	0.92	16.03	2.79	1.39	5.36	1.60	-	-
Jaén	5.81	1.27	0.73	17.81	3.20	0.18	1.11	0.08	0.19	-
León	2.49	1.03	11.41	21.31	1.19	1.08	5.53	1.13	0.04	0.08
Lleida	2.48	0.16	1.11	3.51	0.26	2.63	1.72	0.28	0.01	0.01
Lugo	1.71	0.92	42.83	16.13	1.01	0.79	2.42	1.47	0.06	0.02
Madrid	7.31	2.15	5.61	21.27	2.59	1.45	8.76	0.87	0.22	0.29
Málaga	2.44	1.80	1.47	16.28	1.00	0.65	3.37	0.21	0.37	0.57
Murcia	15.63	0.60	2.05	25.38	15.06	1.25	3.37	0.69	0.07	0.01
Navarra	5.47	0.68	5.01	19.68	0.80	7.86	10.16	1.52	0.13	0.05
Ourense	1.34	0.31	62.72	13.15	0.27	0.17	1.73	0.60	-	0.03
Palencia	4.34	0.96	7.75	19.72	4.31	6.40	8.39	0.27	-	-
Palmas, Las	0.82	0.72	3.39	31.07	0.18	0.96	7.15	0.59	0.04	0.21
Pontevedra	2.04	1.04	36.70	14.62	0.65	0.86	4.83	0.19	0.08	0.02
Rioja, La	6.36	0.37	3.73	20.97	0.88	2.31	12.20	3.70	0.09	-
Salamanca	3.00	4.31	7.11	27.10	0.81	1.34	5.05	1.30	0.06	-
S. C. Tenerife	1.19	1.49	2.31	51.86	0.21	0.26	6.07	0.14	0.03	0.07
Segovia	3.27	1.28	7.62	36.28	2.12	1.08	4.78	0.53	0.11	-
Sevilla	3.78	2.20	1.94	20.73	1.15	0.77	2.98	0.56	0.35	0.17
Soria	3.81	1.07	8.21	27.57	0.37	3.32	6.01	1.62	0.04	-
Tarragona	6.78	0.29	1.65	9.34	0.59	3.00	9.67	1.25	0.14	0.37
Teruel	20.82	0.40	0.94	17.16	2.46	0.69	4.21	1.68	0.04	-
Toledo	8.96	2.95	3.69	21.17	4.12	1.59	4.90	0.82	0.86	0.01
Valencia/València	19.57	1.86	2.71	29.73	2.38	0.54	4.00	0.37	0.08	0.07
Valladolid	5.04	2.27	8.28	26.62	0.60	1.46	5.77	0.53	0.01	0.01
Zamora	3.26	5.57	14.97	21.42	0.52	0.69	7.27	1.20	0.22	-
Zaragoza	5.39	1.31	3.61	20.25	1.51	1.78	5.98	1.51	0.04	0.11
Ceuta	7.03	-	0.64	17.68	0.90	0.32	0.64	-	4.28	0.53
Melilla	2.06	0.67	4.64	12.78	1.25	0.25	0.68	0.08	0.89	4.05

8. Travellers, overnight stays and average stay by country of residence

Results by countries

Countries	Number of travellers		Overnight stays	
	Total	%	Total	%
TOTAL	7,765,197	100.00	24,765,536	100.00
Residents in Spain	3,629,300	46.74	7,890,420	31.86
Residents abroad	4,135,897	53.26	16,875,116	68.14
Total Residents abroad	4,135,897	100.00	16,875,116	100.00
Total Residents in U.E. (without Spain)	3,086,536	74.63	14,106,453	83.59
- Germany	798,486	19.31	4,441,668	26.32
- Austria	46,184	1.12	177,509	1.05
- Belgium	104,195	2.52	507,593	3.01
- Denmark	38,882	0.94	195,109	1.16
- Finland	21,374	0.52	77,043	0.46
- France	492,335	11.90	1,381,331	8.19
- Greece	8,460	0.20	24,134	0.14
- Ireland	65,470	1.58	278,547	1.65
- Italy	189,826	4.59	513,874	3.05
- Luxembourg	6,618	0.16	30,712	0.18
- Netherlands	171,873	4.16	753,900	4.47
- Poland	47,304	1.14	207,267	1.23
- Portugal	79,400	1.92	180,787	1.07
- United Kingdom	871,486	21.07	4,785,251	28.36
- Czech Republic	13,849	0.33	47,006	0.28
- Sweden	68,091	1.65	302,645	1.79
- Rest of UE*	62,705	1.52	202,077	1.20
Norway	33,694	0.81	137,062	0.81
Russia	108,880	2.63	520,368	3.08
Switzerland	68,905	1.67	272,715	1.62
Rest of Europe	87,417	2.11	251,339	1.49
Japan	59,885	1.45	94,207	0.56
United States of America	219,356	5.30	466,401	2.76
Rest of America	238,280	5.76	538,366	3.19
African's countries	33,950	0.82	71,261	0.42
Rest of the world	198,996	4.81	416,943	2.47

*Countries included in the Rest of UE: Bulgaria, Cyprus, Slovakia, Slovenia, Estonia, Hungary, Latvia, Lithuania, Malta and Romania

Hotel Price Index (HPI). 2008 Base

May 2012

Provisional data

General Autonomous Cities and Communities and national indices

	Index	Interannual variation rate
TOTAL	90.9	-0.7
Andalucía	89.7	-2.2
Aragón	75.9	-6.1
Asturias, Principado de	87.0	-1.8
Balears, Illes	95.3	1.7
Canarias	97.7	2.2
Cantabria	93.2	2.0
Castilla y León	90.3	-3.6
Castilla - La Mancha	90.5	-1.9
Cataluña	92.2	0.3
Comunitat Valenciana	88.2	-2.9
Extremadura	89.2	-4.1
Galicia	93.1	-4.5
Madrid, Comunidad de	81.5	-3.2
Murcia, Región de	78.3	-6.3
Navarra, Comunidad Foral de	88.0	-3.1
País Vasco	88.5	-1.7
Rioja, La	85.9	-4.4
Ceuta	106.0	-5.8
Melilla	94.6	3.2

National General Index and breakdown by categories

	Index	Interannual variation rate
TOTAL	90.9	-0.7
HOTELS: Gold stars		
Five	88.1	1.2
Fourth	89.4	-0.6
Three	92.1	-1.7
Two	93.9	-0.7
One	100.1	1.5
HOSTALS: Silver stars		
Three and two	93.3	-2.1
One	97.1	-1.5

Indicators on the Profitability of the Hotel Sector

May 2012

Provisional data

ADR and RevPAR for Autonomous Cities and Communities and national indices

	ADR (in euros)	Variation Rate variation	RevPar (in euros)	Variation Rate variation
TOTAL	64.5	0.4	34.3	-0.9
Andalucía	66.0	-2.8	33.9	-2.1
Aragón	50.1	-5.2	15.3	-12.3
Asturias, Principado de	52.9	-4.0	16.6	-7.4
Balears, Illes	55.6	5.5	33.5	4.5
Canarias	69.0	6.5	44.3	6.1
Cantabria	59.0	0.5	19.9	-4.1
Castilla y León	54.1	-2.2	18.4	-11.1
Castilla - La Mancha	57.1	-1.4	16.9	-13.2
Cataluña	73.9	-1.0	42.4	0.0
Comunitat Valenciana	53.3	-3.2	28.4	-1.3
Extremadura	55.5	-1.9	20.5	-4.8
Galicia	52.1	-2.7	15.6	-14.9
Madrid, Comunidad de	81.9	-3.6	53.1	-7.8
Murcia, Región de	50.9	-2.7	21.5	-11.4
Navarra, Comunidad Foral de	62.0	-0.7	24.4	-9.0
País Vasco	68.1	-4.7	40.0	-1.2
Rioja, La	57.9	-1.4	29.4	-3.0
Ceuta	71.4	-3.1	35.8	-7.1
Melilla	64.1	-1.8	36.1	-1.5

National ADR and RevPar and breakdown by categories

	ADR (in euros)	Variation Rate interannual	RevPar (in euros)	Variation Rate interannual
TOTAL	64.5	0.4	34.3	-0.9
HOTELS: Gold stars				
Five	146.9	0.6	82.7	-0.8
Four	71.4	-0.2	45.1	-0.8
Three	49.8	-1.1	28.0	-1.9
Two	51.4	4.8	20.4	-0.3
One	48.6	1.5	15.5	-0.1
GUESTHOUSES: Silver stars				
Three and two	44.6	1.2	13.6	-5.1
One	36.5	-2.0	10.4	-9.7