

Hotel Tourism Short-Term Trends (HOS/HPI/ADR/REVPAR)
July 2011. *Provisional data*

Overnight stays in hotel establishments increase 8.9%* in July, as compared with the same month in 2010

Hotels earn 51.1 euros per available room and invoice an average of 75.4 euros per occupied room

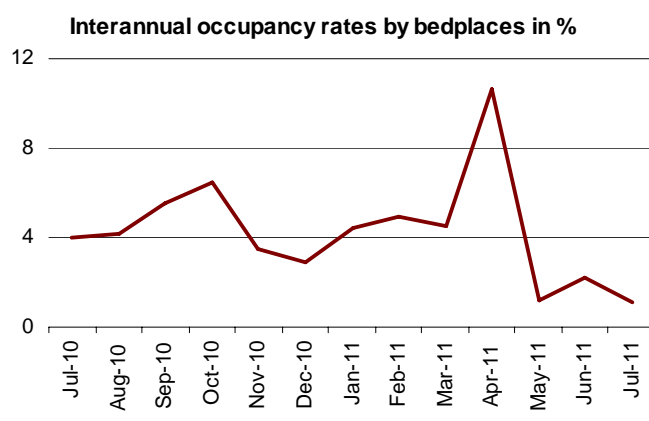
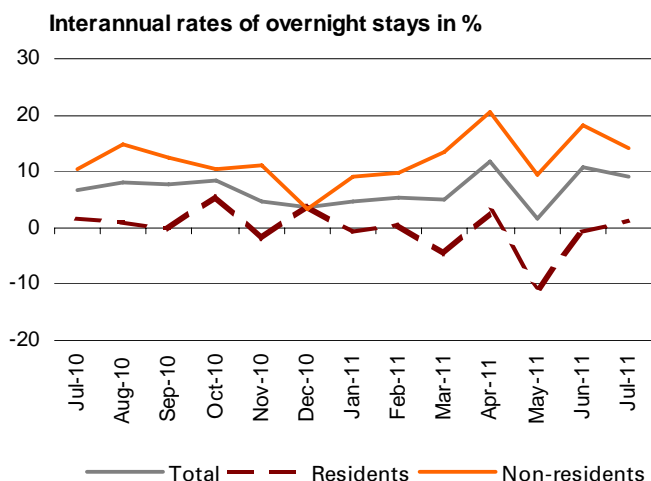
During the month of July, 38.0 million overnight stays were recorded in hotel establishments, indicating a 8.9% increase, as compared with the same month in 2010. This increase in overnight stays took place for both residents, whose interannual rate stood at 1.2%, and non-residents, with an interannual variation of 14.1%.

The average stay increased 1.1%, standing at 3.8 nights per guest.

During the first seven months of the year, overnight stays increased 7.4%, as compared with the same period the previous year.

In turn, **the Hotel Price Index (HPI) registered a 0.6% increase**, this rate being 1.3 points higher than that registered in July 2010. Regarding the indicators on the profitability of the hotel sector, invoicing per occupied room reached an average value of 75.4 euros (1.5 euros more than one year ago), and income per available room stood at 51.1 euros (4.0 euros more than in June 2010).

67.3% of the available bedplaces were filled in July, indicating an 5.8% increase as compared with the same month the previous year. The weekend occupancy rate by bedplaces stood at 69.6%, with an increase of 5.4%.



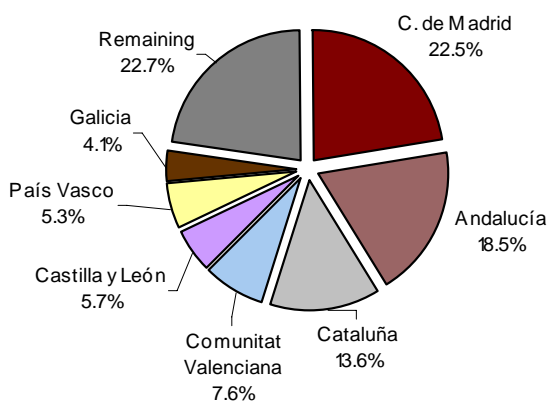
* Due to the update made in the in the directory of hotel establishments in Canarias, Comunidad Foral de Navarra and Extremadura, the data published for those Communities and the national total cannot be directly compared. To bridge this gap in the series, some linking coefficients have been calculated to allow users to compare data from different years. The coefficients are published monthly on the INE website in the section dedicated to this statistical operation, in a specific section entitled linking coefficients.

Overnight stays of guests resident abroad

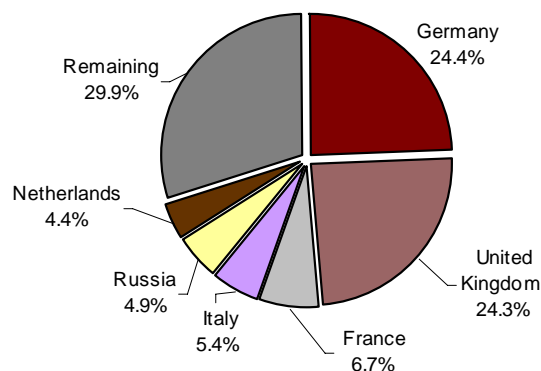
Guests from Germany and the United Kingdom made more than 11.6 million overnight stays in July. The German market experienced an interannual increase of 8.2%, while the British market grew 10.3%.

Overnight stays of guests from France, Italy, and Russia (the following countries of origin) presented interannual rates of 14.9%, 17.2% and 56.9% respectively.

Overnight stays of guests resident in Spain by Autonomous Community of origin in %



Overnight stays of guests resident abroad by country of origin in %

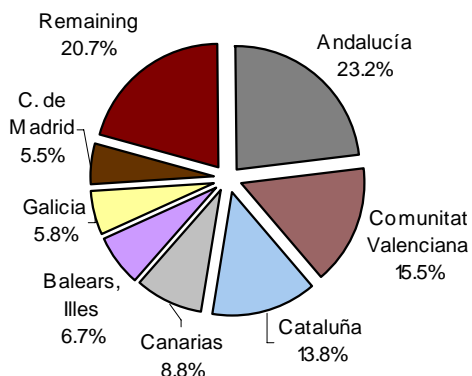


Main destinations

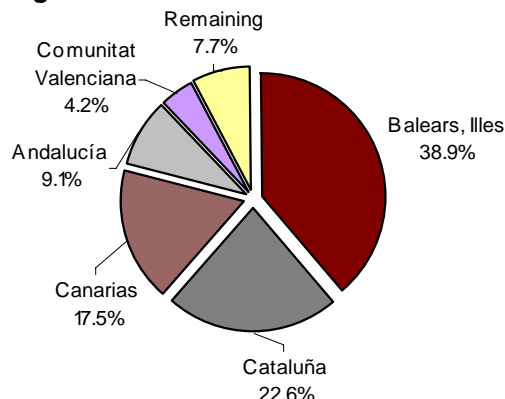
The main destination chosen by non-residents was Illes Balears. In this Autonomous Community, overnight stays by foreign nationals grew 13.0%. It was followed by Cataluña, with an interannual rate of 12.0%, and Canarias, with an increase of 22.5%.

Andalucía, Comunitat Valenciana and Cataluña were the main destinations of guests resident in Spain, with interannual rates for overnight stays of -3.2%, 5.3% and -0.9%, respectively.

Distribution of overnight stays of guests resident in Spain in %



Distribution of overnight stays of guests resident abroad in %



Results by Autonomous Community, tourist area and tourist site

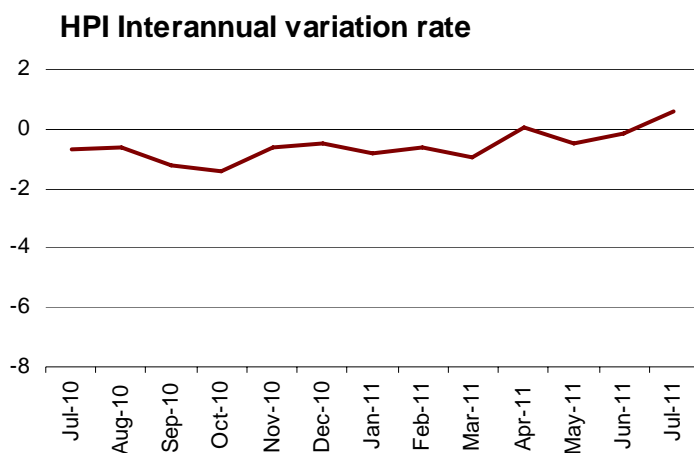
Illes Balears was the Autonomous Community with the highest occupancy rate by bedplaces during the month of July (90.6%). It was followed by Canarias (76.6%) and Cataluña (73.8%).

The tourist areas with the highest occupancy and overnight stay rates were located on the islands and the coasts. Mallorca recorded the highest occupancy rate by bedplaces (91.5%) and registered more than 7.5 million overnight stays in July. Ibiza-Formentera reached the highest weekend occupancy rate by bedplaces (90.4%).

The tourist sites with the highest number of overnight stays were Barcelona, Calviá and Madrid. Muro reached the highest occupancy rate by bedplaces (98.8%), and the highest weekend occupancy (95.0%).

Evolution of the Hotel Price Index

The interannual rate of the HPI stood at 0.6% in July, this rate being 0.7 points higher than that obtained last month, and 1.3 points higher than that registered one year ago.



HPI by Autonomous Community

The four Autonomous Communities (Illes Balears, Cataluña, Andalucía and Canarias) that carried 72.6% of the total weight of the HPI in the month of July, showed uneven behaviour as compared with June 2011.

Illes Balears, which carried the greatest load in the weighting structure this month, presented an interannual rate of 0.9%, that is, the same than that estimated in June. Hotel prices recorded a variation of 2.5% in Cataluña, as compared with the 2.0% recorded the previous month. Andalucía showed an interannual rate of -0.3%, as compared with the -2.8% observed last month. In Canarias, the variation was 0.6%, indicating 1.3 points less than in June.

HPI by category

Hotel prices decreased in July in three-gold-star hotels (0.8%) and in two-gold-star hotels (0.1%).

There was no variation in prices in one-silver-star hotels.

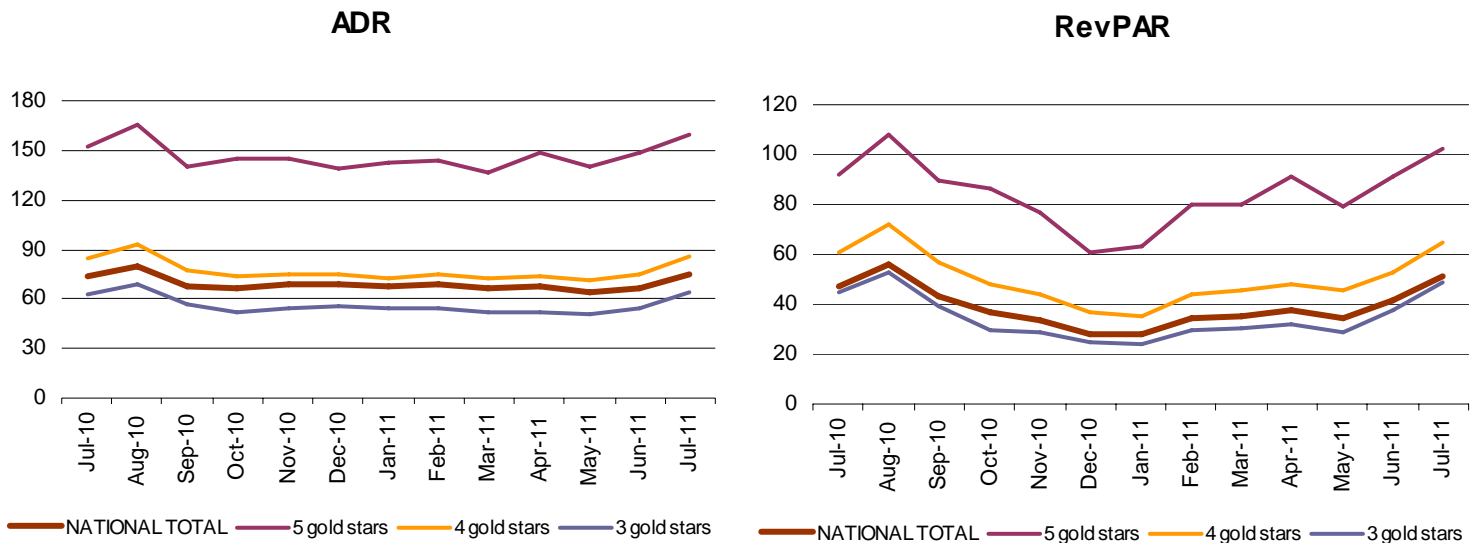
The HPI increased in one-gold-star hotels (5.1%), in five-gold-star and in three and two-silver-star (both with 2.0%), and four-gold-star hotels (1.2%).

Indicators on the Profitability of the Hotel Sector

The average invoicing by hotels per occupied room (ADR) in July was 75.4 euros, indicating an increase of 1.5 euros as compared with the same month in 2010.

In turn, income per available room (RevPAR), conditioned by the occupancy registered in the hotel establishments, reached 51.1 euros, with an increase of 4.0 euros as compared with July 2010.

By category, the average invoicing was 160.1 euros for five-star hotels, 85.8 euros for four-star hotels and 64.1 euros for three-star hotels. Income per available room for these same categories was 102.6, 65.2 and 48.9 euros, respectively.



For further information see INEbase-www.ine.es/en/welcome_en.htm All press releases at: www.ine.es/en/prensa/prensa_en.htm

Press Office: Telephone numbers: 91 583 93 63 / 94 08 – Fax: 91 583 90 87 - gprensa@ine.es

Information Area: Telephone number: 91 583 91 00 – Fax: 91 583 91 58 – www.ine.es/infoine/?L=1

Tourist Accommodation Occupancy Survey (Hotels and similar establishments)

July 2011

Provisional data

1. Travellers, overnight stays and average stay by categories of establishment

Category	Number of travellers			Number of overnight stays			Average stay
	Total	Residents in Spain	Residents abroad	Total	Residents in Spain	Residents abroad	
TOTAL	10,088,978	5,098,188	4,990,790	38,045,430	14,092,994	23,952,436	3.77
HOTELS: Golden stars							
Five	511,963	203,585	308,378	1,713,332	533,264	1,180,068	3.35
Four	4,158,455	2,095,619	2,062,835	16,164,082	6,109,422	10,054,660	3.89
Three	3,322,440	1,519,782	1,802,658	14,421,882	4,476,423	9,945,459	4.34
Two	824,913	491,705	333,209	2,454,488	1,221,955	1,232,533	2.98
One	320,708	194,724	125,984	858,568	429,421	429,148	2.68
INNS: Silver stars							
Two and three	523,618	335,169	188,450	1,379,960	720,859	659,100	2.64
One	426,881	257,604	169,276	1,053,118	601,651	451,467	2.47
Interannual rate	7.23	1.74	13.47	8.93	1.18	14.06	1.07
Cumulative interannual rate	4.73	-0.73	11.87	7.37	-1.61	14.04	2.52

2. Open establishments, capacity, occupancy and employed personnel by categories of establishment

Category	Estimated open establishments	Estimated bedplaces	Level of occupancy			Employed personnel
			Per bedplaces	Per bedplaces at weekend	Per rooms	
TOTAL	17,024	1,726,864	67.26	69.62	67.71	243,877
HOTELS: Golden stars						
Five	266	85,441	63.42	65.05	64.09	25,588
Four	2,164	657,258	74.77	76.46	75.99	106,244
Three	3,018	569,107	76.32	77.83	76.33	73,265
Two	2,180	146,471	52.66	58.83	54.72	14,659
One	1,413	62,909	42.84	48.37	45.33	5,965
INNS: Silver stars						
Two and three	3,440	111,280	39.47	43.45	41.91	10,350
One	4,542	94,399	35.52	38.42	38.25	7,805
Interannual rate	0.73	2.31	5.79	5.37	6.71	3.10

3. Travellers, overnight stays, occupancy, average stay and employed personnel

Results by areas and tourist sites

	Travellers		Overnight stays		Level of occupancy			Average stay	Employed personnel
	Residents in Spain	Residents abroad	Residents in Spain	Residents abroad	Per bedplac	Per bedplaces	Per rooms at weekend		

Tourist areas with a greater level of occupancy per month

Isla de Mallorca	108,062	1,006,900	432,452	7,147,366	91.52	90.17	89.80	6.80	35,344
Islas de Ibiza-Formentera	63,472	257,889	264,040	1,602,342	90.83	90.35	90.52	5.81	8,472
Costa Barcelona-Maresme	34,937	137,497	120,395	913,140	86.66	83.57	81.42	5.99	3,522
Isla de Lanzarote	53,733	75,961	274,049	632,333	85.64	77.81	80.87	6.99	5,168
Costa Daurada	174,687	184,524	630,713	1,161,456	84.56	83.99	84.30	4.99	7,610
Barcelona	173,545	605,241	338,401	1,528,328	83.28	81.46	86.45	2.40	12,374
Isla de Menorca	46,375	72,650	250,927	566,916	82.98	79.06	81.83	6.87	3,860
Costa de Gipuzkoa	39,747	38,669	78,630	81,813	81.31	87.54	84.81	2.05	1,209

Tourist areas with a greater number of overnight stays per month *

Costa del Sol	251,757	225,437	888,557	1,181,546	77.69	81.22	78.53	4.34	13,177
Isla de Tenerife	119,314	173,314	506,308	1,445,712	74.06	75.85	73.73	6.67	14,473
Costa Brava	145,102	309,110	371,719	1,490,230	73.20	76.50	73.58	4.10	9,195
Costa Blanca	261,403	136,678	1,106,823	704,130	79.89	85.85	79.82	4.55	9,506
Isla de Gran Canaria	67,521	124,830	282,046	1,089,231	75.66	75.11	74.96	7.13	9,700
Isla de Fuerteventura	24,587	102,541	129,577	969,286	78.75	81.31	82.96	8.64	6,774
Costa de la Luz de Cádiz	165,850	62,068	593,400	292,105	69.36	72.41	72.22	3.89	6,302
Costa de Almería	143,148	22,797	611,812	128,681	64.08	64.33	69.24	4.46	3,581

Tourist sites with a greater level of occupancy per month

Muro	4,006	81,938	26,602	580,323	98.83	94.99	95.62	7.06	2,320
Santa Susanna	13,122	41,631	54,197	285,027	95.34	86.69	84.07	6.20	966
Sant Antoni de Portmany	7,741	58,607	41,672	394,057	95.21	92.65	88.74	6.57	1,534
Sant Llorenç des Cardassar	3,992	89,918	20,127	752,923	94.34	86.66	89.57	8.23	3,168
Calvià	16,570	209,566	103,684	1,465,573	94.20	91.74	92.72	6.94	7,101
Sant Josep de Sa Talaia	8,426	56,133	37,346	337,438	93.34	92.71	93.46	5.81	1,869
Santa Margalida	2,712	52,916	14,115	436,999	93.20	93.62	94.51	8.11	1,937
Salou	59,332	124,509	266,911	819,421	93.07	90.96	90.92	5.91	3,836
Yaiza	30,128	42,892	147,556	321,056	92.82	74.55	80.48	6.42	2,585
Eivissa	22,719	49,960	81,977	259,510	92.03	91.67	92.08	4.70	1,893

Tourist sites with a greater number of overnight stays per month *

Barcelona	163,427	588,049	309,903	1,484,795	83.61	81.54	86.51	2.39	12,072
Madrid	338,796	389,926	554,087	835,704	56.07	60.38	64.58	1.91	12,161
Benidorm	130,221	76,455	705,074	500,849	89.11	92.35	87.62	5.83	5,799
Palma	55,112	199,772	125,711	1,067,036	87.66	90.41	90.14	4.68	6,375
San Bartolomé de Tirajana	41,093	85,953	204,122	803,500	79.95	77.28	77.60	7.93	7,203
Lloret de Mar	16,616	145,287	54,041	884,546	87.60	86.04	86.08	5.80	3,022
Adeje	31,027	83,410	138,367	743,664	84.28	83.62	82.33	7.71	6,278
Pájara	13,384	70,878	77,293	655,567	83.48	81.52	84.96	8.70	4,753
Alcúdia	1,972	78,795	13,637	620,635	89.71	89.56	88.40	7.85	2,486
Torremolinos	66,061	47,175	259,889	287,093	82.62	83.98	79.32	4.83	2,622

* Not taken into account those included in the preceding table because they are in the bigger level of occupancy tables too.

4. Travellers, overnight stays and average stay

Results by Autonomous Cities and Communities and provinces

	Number of travellers			Overnight stays			Average stay
	Total	Residents in Spain	Residents abroad	Total	Residents in Spain	Residents abroad	
TOTAL	10,088,978	5,098,188	4,990,790	38,045,430	14,092,994	23,952,436	3.77
Andalucía	1,606,667	1,022,239	584,428	5,458,122	3,274,603	2,183,519	3.40
Almería	171,030	147,726	23,303	746,651	619,075	127,576	4.37
Cádiz	268,982	193,991	74,991	964,411	647,310	317,101	3.59
Córdoba	75,618	42,757	32,861	119,604	69,386	50,218	1.58
Granada	188,377	101,422	86,955	420,359	253,801	166,559	2.23
Huelva	165,081	141,706	23,375	682,159	555,766	126,393	4.13
Jaén	39,375	34,381	4,995	69,970	62,425	7,546	1.78
Málaga	514,151	273,433	240,718	2,129,357	921,579	1,207,778	4.14
Sevilla	184,054	86,823	97,230	325,609	145,261	180,348	1.77
Aragón	219,256	172,616	46,639	441,726	349,117	92,609	2.01
Huesca	79,414	62,469	16,945	195,537	152,254	43,283	2.46
Teruel	32,663	29,526	3,137	59,475	55,125	4,350	1.82
Zaragoza	107,178	80,621	26,558	186,714	141,738	44,976	1.74
Asturias, Principado de	203,583	176,489	27,095	456,609	405,121	51,487	2.24
Balears, Illes	1,555,347	217,908	1,337,439	10,264,042	947,418	9,316,624	6.60
Canarias	762,918	279,185	483,733	5,433,387	1,244,811	4,188,575	7.12
Palmas, Las	449,174	145,841	303,333	3,376,523	685,672	2,690,850	7.52
Santa Cruz de Tenerife	313,744	133,343	180,400	2,056,864	559,139	1,497,725	6.56
Cantabria	156,049	129,333	26,716	372,922	318,637	54,286	2.39
Castilla y León	445,038	342,922	102,116	726,562	573,812	152,750	1.63
Ávila	27,412	23,672	3,740	46,462	40,114	6,348	1.69
Burgos	82,861	50,634	32,226	126,611	81,565	45,046	1.53
León	77,671	64,145	13,526	125,066	105,076	19,991	1.61
Palencia	22,746	17,498	5,247	39,830	32,678	7,153	1.75
Salamanca	89,724	64,807	24,917	148,462	111,700	36,762	1.65
Segovia	40,344	34,459	5,886	68,947	57,737	11,210	1.71
Soria	21,827	20,121	1,706	38,547	35,958	2,589	1.77
Valladolid	54,499	43,828	10,671	90,666	72,604	18,062	1.66
Zamora	27,955	23,758	4,197	41,972	36,381	5,590	1.50
Castilla-La Mancha	171,743	138,093	33,650	296,255	245,797	50,458	1.72
Albacete	28,356	26,058	2,298	64,861	60,640	4,221	2.29
Ciudad Real	35,664	31,130	4,534	63,715	56,243	7,471	1.79
Cuenca	26,725	22,422	4,303	43,164	36,508	6,657	1.62
Guadalajara	21,648	19,340	2,308	36,763	33,006	3,757	1.70
Toledo	59,350	39,143	20,207	87,752	59,399	28,353	1.48
Cataluña	2,122,657	758,735	1,363,922	7,348,647	1,942,139	5,406,508	3.46
Barcelona	1,166,255	321,933	844,322	3,360,780	668,116	2,692,664	2.88
Girona	479,477	166,571	312,906	1,913,902	414,973	1,498,928	3.99
Lleida	83,833	68,708	15,125	175,427	141,288	34,139	2.09
Tarragona	393,092	201,523	191,568	1,898,538	717,761	1,180,777	4.83
Comunitat Valenciana	839,665	578,863	260,803	3,174,804	2,177,409	997,395	3.78
Alicante/Alacant	415,368	275,035	140,332	1,848,699	1,134,834	713,866	4.45
Castellón/Castelló	132,188	111,363	20,825	596,981	533,806	63,175	4.52
Valencia/València	292,110	192,464	99,646	729,124	508,769	220,355	2.50
Extremadura	116,861	99,957	16,904	199,264	174,310	24,954	1.71
Badajoz	61,718	51,810	9,907	101,294	87,129	14,165	1.64
Cáceres	55,143	48,147	6,997	97,970	87,181	10,789	1.78
Galicia	435,187	343,076	92,112	991,141	824,173	166,969	2.28
Coruña, A	185,230	135,094	50,136	398,286	306,740	91,545	2.15
Lugo	71,088	53,748	17,339	110,815	89,325	21,490	1.56
Ourense	27,605	24,849	2,755	54,530	49,058	5,472	1.98
Pontevedra	151,265	129,384	21,881	427,511	379,050	48,461	2.83
Madrid, Comunidad de	919,545	473,262	446,283	1,716,491	780,982	935,509	1.87
Murcia, Región de	107,222	90,543	16,679	322,294	280,911	41,383	3.01
Navarra, Comunidad Foral de	88,496	61,420	27,076	180,385	129,938	50,447	2.04
País Vasco	273,854	161,763	112,091	538,703	320,196	218,507	1.97
Araba/Álava	42,759	27,953	14,806	73,891	52,021	21,871	1.73
Bizkaia	116,272	69,735	46,537	238,069	142,597	95,472	2.05
Gipuzkoa	114,823	64,075	50,749	226,743	125,578	101,164	1.97
Rioja, La	50,909	42,159	8,750	91,222	77,902	13,320	1.79
Ceuta	8,629	5,699	2,930	18,613	13,596	5,017	2.16
Melilla	5,350	3,925	1,424	14,240	12,121	2,119	2.66

5. Establishment, capacity, occupancy and employed personnel

Results by Autonomous Cities and Communities and provinces

	Estimated open establishments	Estimated bedplaces	Level of occupancy			Employed personnel
			Per bedplaces	Per bedplaces at weekends	Per rooms	
TOTAL	17,024	1,726,864	67.26	69.62	67.71	243,877
Andalucía	2,579	278,975	60.61	63.62	61.34	39,997
Almería	195	38,301	60.55	61.14	65.11	4,020
Cádiz	495	47,261	63.63	67.47	65.76	7,387
Córdoba	193	10,507	36.33	37.54	38.03	1,364
Granada	435	30,738	43.63	50.77	46.40	3,658
Huelva	183	27,832	71.83	72.88	70.11	4,569
Jaén	186	9,181	24.49	30.06	26.03	1,223
Málaga	581	89,631	73.58	76.92	73.39	14,486
Sevilla	311	25,524	40.74	41.67	42.94	3,292
Aragón	871	42,243	33.43	40.84	36.19	4,923
Huesca	360	17,604	35.48	45.58	37.09	1,953
Teruel	221	7,084	26.79	36.92	30.22	866
Zaragoza	290	17,555	34.04	37.66	37.68	2,105
Asturias, Principado de	728	28,499	51.03	58.33	52.94	3,353
Balears, Illes	1,285	334,631	90.63	89.21	89.30	47,676
Canarias	517	220,519	76.59	76.63	76.25	37,050
Palmas, Las	261	132,958	79.15	77.80	78.92	21,642
Santa Cruz de Tenerife	255	87,561	72.70	74.84	72.34	15,408
Cantabria	491	22,334	53.16	56.53	54.23	3,237
Castilla y León	1,436	62,299	37.29	44.75	39.68	8,229
Ávila	104	4,953	30.02	43.64	33.05	628
Burgos	217	9,296	43.55	49.40	45.43	1,074
León	302	11,517	34.83	44.91	38.64	1,289
Palencia	99	3,441	37.15	38.63	42.19	379
Salamanca	215	11,424	41.30	47.52	41.05	1,584
Segovia	144	6,078	36.16	47.45	36.96	840
Soria	119	3,886	31.89	38.83	32.74	515
Valladolid	143	8,156	35.72	39.70	39.42	1,274
Zamora	93	3,549	37.70	44.14	42.24	647
Castilla-La Mancha	846	35,090	27.08	33.10	30.05	3,963
Albacete	168	7,170	29.14	34.40	33.27	883
Ciudad Real	187	7,691	26.61	32.07	31.60	879
Cuenca	167	5,849	23.67	31.40	26.97	632
Guadalajara	137	4,725	24.98	28.69	26.64	429
Toledo	188	9,655	29.02	36.16	29.94	1,140
Cataluña	2,524	301,126	73.79	74.94	74.45	39,847
Barcelona	1,063	135,595	77.12	76.31	78.63	19,789
Girona	779	81,055	70.49	74.88	71.05	9,931
Lleida	343	17,818	31.54	36.46	32.51	1,875
Tarragona	339	66,659	82.31	82.49	81.56	8,252
Comunitat Valenciana	1,102	134,366	70.79	76.31	70.18	17,981
Alicante/Alacant	489	71,459	77.06	83.02	76.38	9,893
Castellón/Castelló	232	24,705	70.58	71.27	65.87	3,257
Valencia/València	381	38,202	59.22	67.03	61.20	4,831
Extremadura	438	19,948	31.97	38.92	35.50	2,830
Badajoz	211	9,919	32.72	37.70	37.14	1,308
Cáceres	228	10,029	31.23	40.13	33.87	1,522
Galicia	1,813	73,828	42.85	47.14	45.72	9,275
Coruña, A	668	26,888	47.27	51.40	51.17	3,013
Lugo	331	10,177	34.91	35.29	38.00	1,218
Ourense	194	6,359	27.47	30.01	31.85	783
Pontevedra	618	30,404	44.80	50.92	46.37	4,262
Madrid, Comunidad de	1,160	104,132	52.63	57.53	60.13	15,119
Murcia, Región de	207	20,218	49.50	55.08	51.02	2,924
Navarra, Comunidad Foral de	329	13,111	44.13	47.17	49.03	1,806
País Vasco	526	27,441	62.33	67.64	67.87	4,436
Araba/Álava	79	4,465	52.28	60.99	61.52	652
Bizcaia	213	13,087	58.24	61.13	63.15	2,032
Gipuzkoa	234	9,888	72.28	79.26	76.79	1,752
Rioja, La	151	6,443	45.33	57.10	48.16	908
Ceuta	12	811	74.00	64.44	63.02	160
Melilla	11	851	53.90	65.06	71.59	162

HOS (TABLES ANNEX) - JULY 2011 (4/9)

Provisional data

6. Percentage distribution of Spanish travellers in each province by Autonomous City and Community of origin

Results by provinces

(Continued)

Provincias	Total	Andalucía	Aragón	Asturias, P. de	Balears, Illes	Canarias	Cantabria	Castilla y León	Castilla-La Mancha	Cataluña
TOTAL	100	18.28	3.01	2.50	1.36	3.23	1.28	5.37	3.76	15.07
Albacete	100	8.22	1.04	1.90	0.43	0.33	0.88	3.63	20.14	8.49
Alicante/Alacant	100	5.61	1.71	1.25	0.49	0.88	0.81	5.28	10.73	4.41
Almería	100	49.89	0.47	0.99	0.19	0.27	0.11	2.42	4.69	3.21
Araba/Álava	100	9.87	3.27	1.93	0.73	2.23	2.16	6.84	2.24	14.90
Asturias	100	7.25	2.54	11.46	1.14	1.74	3.10	12.32	3.64	5.85
Ávila	100	11.31	1.15	2.40	0.81	0.93	1.18	14.18	4.48	3.88
Badajoz	100	18.79	1.50	3.42	0.47	1.28	0.97	7.26	3.78	5.08
Balears, Illes	100	12.48	1.44	1.71	12.24	0.84	1.25	2.34	1.32	25.50
Barcelona	100	7.85	2.79	1.40	2.39	2.76	1.20	2.90	2.11	38.44
Bizkaia	100	5.92	2.69	3.43	1.33	2.28	1.59	5.88	1.99	14.73
Burgos	100	8.08	2.85	3.01	0.87	0.58	2.85	13.26	3.26	12.15
Cáceres	100	17.40	2.49	4.02	0.30	0.91	1.51	6.91	3.19	4.15
Cádiz	100	51.73	0.90	1.12	0.71	0.92	0.69	4.19	3.08	3.79
Cantabria	100	6.31	3.91	3.92	0.41	2.42	4.56	17.20	3.58	7.06
Castellón/Castelló	100	2.65	8.45	0.82	0.41	0.27	0.64	5.98	6.26	11.18
Ciudad Real	100	17.19	1.69	1.81	0.87	0.68	1.24	3.66	16.24	7.08
Córdoba	100	47.87	1.62	1.04	0.31	1.13	0.38	2.76	3.32	6.99
Coruña, A	100	10.21	2.03	4.01	1.05	1.75	1.67	6.30	2.45	7.01
Cuenca	100	8.10	2.69	1.74	0.79	1.09	0.97	4.70	14.47	6.41
Gipuzkoa	100	5.52	4.30	2.69	0.67	1.14	2.49	6.51	3.07	15.85
Girona	100	4.66	2.80	0.51	0.44	0.30	0.30	1.54	0.73	73.99
Granada	100	53.89	0.85	0.86	0.50	0.88	0.45	2.17	1.90	5.82
Guadalajara	100	10.73	1.53	1.14	0.67	0.77	1.32	3.02	20.67	7.99
Huelva	100	52.81	0.57	1.10	0.21	0.95	0.34	3.91	3.36	2.17
Huesca	100	4.50	21.80	1.25	0.97	0.89	0.75	2.10	2.58	24.56
Jaén	100	52.26	1.29	1.13	0.40	0.42	0.64	1.88	3.23	5.94
León	100	5.58	2.44	13.81	0.52	1.24	2.51	19.65	2.73	8.25
Lleida	100	3.49	2.23	1.07	1.22	0.74	0.33	1.16	1.55	69.58
Lugo	100	8.10	1.53	6.35	0.56	1.57	2.09	6.07	2.20	7.12
Madrid	100	16.96	2.59	3.46	1.70	4.03	2.03	4.77	3.27	11.84
Málaga	100	61.83	0.87	0.68	0.29	1.34	0.26	2.06	2.72	3.62
Murcia	100	14.30	1.16	0.76	0.43	0.47	0.70	3.15	7.60	7.65
Navarra	100	6.63	5.70	1.41	0.51	0.79	1.96	4.11	2.14	17.72
Ourense	100	4.00	1.06	2.74	0.39	1.17	1.34	4.99	1.62	4.68
Palencia	100	6.22	1.33	5.94	0.86	0.42	4.54	20.05	3.54	6.67
Palmas, Las	100	8.49	0.79	1.81	0.97	35.77	0.60	1.40	1.16	6.16
Pontevedra	100	5.20	1.13	6.63	0.69	2.49	1.31	11.85	2.34	4.46
Rioja, La	100	7.21	5.05	3.49	0.81	1.12	2.95	4.98	3.15	19.49
Salamanca	100	15.89	1.55	5.41	0.54	1.60	2.38	14.50	3.51	4.36
S. C. Tenerife	100	18.30	0.65	0.83	0.53	30.90	0.94	1.35	0.64	6.89
Segovia	100	8.35	2.03	3.27	0.46	0.79	1.71	9.55	3.49	4.67
Sevilla	100	46.44	1.55	1.32	0.73	2.40	0.87	2.77	2.02	9.42
Soria	100	4.72	6.24	2.69	0.39	0.78	1.21	14.32	6.26	10.86
Tarragona	100	2.97	9.96	0.92	0.69	0.30	0.63	3.41	1.79	44.95
Teruel	100	5.47	16.92	0.97	0.44	0.40	0.77	1.83	3.39	16.49
Toledo	100	13.49	2.80	2.34	0.62	1.10	1.18	5.33	14.08	6.99
Valencia/València	100	7.93	4.07	0.67	1.43	0.92	0.66	4.46	7.28	10.04
Valladolid	100	9.29	2.58	4.60	1.30	0.85	2.80	19.89	3.31	7.07
Zamora	100	11.78	1.60	4.86	0.28	0.90	2.28	18.15	2.81	4.72
Zaragoza	100	8.99	14.09	1.50	1.21	1.00	1.86	4.65	3.23	18.65
Ceuta	100	50.06	0.74	1.12	1.02	1.94	0.37	1.21	1.01	2.78
Melilla	100	58.44	1.77	1.04	0.34	1.61	0.11	1.42	1.30	3.47

6. Percentage distribution of Spanish travellers in each province by Autonomous City and Community of origin

Results by provinces

(Conclusion)

Provinces	Comunitat Valenciana	Extremadura	Galicia	Madrid, C. de	Murcia, Región de	Navarra, C. Foral de	País Vasco	Rioja, La	Ceuta	Melilla
TOTAL	8.21	2.21	4.88	20.34	2.23	1.63	5.35	0.84	0.26	0.17
Albacete	20.72	1.61	1.73	18.85	8.81	0.50	2.30	0.35	0.06	-
Alicante/Alacant	30.13	1.71	1.17	27.12	3.84	1.03	3.19	0.49	0.05	0.09
Almería	7.43	1.85	0.70	14.93	10.59	0.50	1.26	0.13	0.16	0.21
Araba/Álava	6.44	1.01	5.27	19.73	0.65	1.98	19.85	0.71	0.17	-
Asturias	3.97	1.84	8.38	23.48	1.08	1.74	9.18	1.16	0.09	0.03
Ávila	7.04	2.05	4.00	39.05	2.78	1.33	2.83	0.40	0.10	0.08
Badajoz	3.28	17.40	3.75	24.26	1.33	1.57	4.61	0.53	0.57	0.12
Balears, Illes	6.62	0.63	3.15	21.47	0.84	0.95	6.30	0.79	0.11	0.05
Barcelona	7.49	1.27	2.56	16.96	1.23	1.33	6.07	0.76	0.15	0.35
Bizkaia	4.35	0.86	4.65	22.23	0.95	3.61	21.49	1.79	0.21	0.02
Burgos	4.79	1.59	7.05	25.49	1.44	1.88	9.47	1.08	0.27	0.02
Cáceres	3.13	12.50	3.66	25.65	0.88	1.54	10.69	0.59	0.46	0.02
Cádiz	2.13	4.52	1.19	18.97	0.93	0.93	2.57	0.51	1.03	0.08
Cantabria	3.79	1.22	4.19	22.76	0.84	4.05	10.96	2.70	0.10	0.01
Castellón/Castelló	26.60	0.92	0.86	24.25	0.77	3.72	4.86	1.21	0.05	0.09
Ciudad Real	8.28	1.96	2.00	24.92	4.35	0.57	6.84	0.41	0.12	0.08
Córdoba	5.95	2.52	1.51	19.56	1.59	0.61	1.92	0.47	0.37	0.07
Coruña, A	5.18	1.13	29.61	20.19	1.48	1.17	3.90	0.62	0.12	0.14
Cuenca	15.25	1.53	4.42	28.25	3.91	0.94	3.74	0.80	0.17	0.03
Gipuzkoa	5.10	1.14	5.24	20.23	0.95	4.51	18.56	1.96	0.07	0.00
Girona	3.13	0.35	0.71	5.76	0.54	0.74	2.70	0.65	0.07	0.08
Granada	6.26	1.44	1.60	15.78	4.15	0.49	1.76	0.32	0.40	0.48
Guadalajara	5.68	1.78	2.48	37.62	0.72	1.09	1.97	0.71	0.13	-
Huelva	1.06	13.03	1.08	16.00	0.40	0.40	2.26	0.13	0.22	0.02
Huesca	10.30	0.69	1.30	14.20	1.67	3.22	7.63	1.54	0.06	-
Jaén	6.23	1.37	1.09	17.05	2.83	0.72	2.69	0.62	0.20	0.01
León	4.16	1.33	8.28	20.32	1.16	1.45	5.44	0.95	0.14	0.03
Lleida	4.84	0.57	0.87	7.49	1.16	0.88	2.22	0.23	0.29	0.10
Lugo	3.50	1.45	33.04	18.60	0.86	1.33	4.55	0.94	0.12	0.04
Madrid	8.80	2.20	5.02	20.12	3.04	1.90	5.86	1.59	0.50	0.32
Málaga	3.88	3.67	0.91	13.44	0.95	0.30	1.55	0.16	0.83	0.62
Murcia	15.35	1.49	0.97	23.23	20.10	0.36	1.07	0.50	0.61	0.10
Navarra	7.55	0.71	2.60	19.33	1.46	9.08	16.40	1.83	0.03	0.05
Ourense	2.57	1.19	53.38	15.86	0.57	0.42	3.64	0.23	0.15	-
Palencia	3.13	2.10	6.84	23.53	1.58	2.31	9.69	1.02	-	0.23
Palmas, Las	2.08	0.36	2.48	32.66	0.27	0.74	4.06	0.14	0.04	0.01
Pontevedra	3.36	1.70	34.19	17.78	1.08	1.19	3.84	0.58	0.15	0.03
Rioja, La	8.40	1.05	3.73	15.64	1.23	2.76	16.60	2.27	0.06	0.01
Salamanca	5.11	3.59	7.22	21.85	1.18	1.92	7.79	0.74	0.45	0.38
S. C. Tenerife	1.16	0.52	1.32	31.25	0.26	0.63	3.65	0.16	0.03	0.00
Segovia	7.15	1.48	4.55	43.80	2.29	1.24	4.35	0.58	0.20	0.03
Sevilla	4.67	3.21	2.09	16.66	1.46	1.01	2.49	0.28	0.52	0.10
Soria	7.91	0.94	2.35	30.51	1.38	2.29	6.01	1.10	-	0.05
Tarragona	8.70	0.41	0.77	7.94	1.60	5.95	7.00	1.73	0.02	0.26
Teruel	28.98	1.16	1.36	12.22	2.04	1.60	5.18	0.74	0.03	-
Toledo	7.66	2.49	3.12	27.66	2.20	1.63	6.38	0.67	0.22	0.04
Valencia/València	19.95	1.20	1.50	32.99	2.89	0.92	2.29	0.39	0.04	0.37
Valladolid	5.25	1.76	6.59	25.19	1.81	0.99	5.78	0.84	0.05	0.04
Zamora	4.98	3.20	12.67	21.44	1.79	1.42	6.65	0.38	0.10	-
Zaragoza	7.79	1.18	3.09	20.85	1.66	1.87	6.03	2.05	0.16	0.12
Ceuta	4.00	1.47	0.56	21.13	1.02	-	0.93	-	10.45	0.19
Melilla	1.90	0.44	1.47	13.22	1.77	0.34	1.45	0.21	0.56	9.14

7. Percentage distribution of overnight stays in each province by Autonomous City and Community of origin

Results by provinces

(Continued)

Provinces	Total	Andalucía	Aragón	Asturias, P. de	Balears, Illes	Canarias	Cantabria	Castilla y León	Castilla-La Mancha	Cataluña
TOTAL	100	18.51	2.99	2.41	1.31	3.51	1.10	5.69	4.06	13.59
Albacete	100	9.27	0.80	1.07	0.42	0.31	0.45	2.55	28.37	6.90
Alicante/Alacant	100	7.22	2.01	2.19	0.21	0.97	0.88	7.61	9.88	2.92
Almería	100	47.99	0.85	1.32	0.16	0.26	0.33	3.49	5.49	3.18
Araba/Álava	100	9.94	3.04	1.82	0.91	3.24	2.00	8.12	2.32	14.19
Asturias	100	9.43	3.18	8.50	1.44	2.95	2.61	10.67	3.96	6.26
Ávila	100	16.39	1.30	2.15	0.74	0.98	1.41	11.82	3.96	4.43
Badajoz	100	20.68	1.34	2.42	0.57	0.89	0.65	5.68	3.66	5.30
Balears, Illes	100	11.55	1.81	2.51	10.21	0.80	1.28	2.60	1.48	23.38
Barcelona	100	8.73	2.81	1.42	2.16	2.65	1.36	3.06	1.77	40.14
Bizkaia	100	6.57	2.36	3.15	1.32	3.06	1.31	5.40	2.04	14.30
Burgos	100	9.14	2.42	2.97	2.07	0.55	2.26	18.15	3.47	10.24
Cáceres	100	15.22	2.70	3.11	0.21	0.86	1.27	6.09	2.67	5.92
Cádiz	100	43.98	1.10	1.71	0.64	0.75	0.74	5.97	3.16	3.58
Cantabria	100	6.66	4.62	2.96	0.40	2.49	2.83	15.76	4.22	6.72
Castellón/Castelló	100	1.96	7.95	1.01	0.16	0.12	0.57	9.22	7.30	9.26
Ciudad Real	100	18.41	1.12	1.17	0.58	0.49	0.93	3.09	18.88	7.02
Córdoba	100	46.33	1.46	1.21	0.23	1.24	0.56	3.21	2.98	7.50
Coruña, A	100	8.97	1.83	3.80	0.77	1.91	1.91	6.74	2.73	6.39
Cuenca	100	8.09	3.30	1.39	0.82	1.08	1.34	4.47	14.91	7.26
Gipuzkoa	100	5.80	4.35	2.29	0.71	1.26	1.88	6.21	3.25	16.93
Girona	100	3.60	3.84	0.76	0.36	0.24	0.46	2.62	0.88	69.92
Granada	100	54.25	0.73	0.84	0.45	1.05	0.50	2.29	2.04	5.68
Guadalajara	100	8.85	1.51	1.11	1.00	0.89	2.11	2.59	22.99	7.10
Huelva	100	45.89	0.65	1.80	0.24	2.47	0.30	5.17	3.15	1.63
Huesca	100	5.24	19.97	0.99	0.84	0.77	0.73	1.72	1.92	26.65
Jaén	100	51.76	1.41	1.05	0.35	0.64	0.55	2.11	3.16	5.64
León	100	5.32	2.13	13.96	0.47	1.23	2.64	24.82	2.27	7.01
Lleida	100	3.84	1.93	0.98	0.77	0.86	0.33	0.87	1.52	67.43
Lugo	100	7.47	1.31	6.23	0.39	1.16	1.91	6.95	2.12	6.59
Madrid	100	16.73	2.49	3.35	1.72	4.69	2.15	4.73	3.32	12.10
Málaga	100	57.17	1.22	0.97	0.30	1.26	0.25	2.98	3.27	3.30
Murcia	100	13.72	1.30	0.89	0.35	0.42	0.97	4.83	10.22	5.83
Navarra	100	7.56	6.21	1.52	0.58	1.29	1.56	3.47	2.58	14.91
Ourense	100	4.62	0.90	3.71	0.84	1.38	1.20	5.82	1.56	4.34
Palencia	100	5.95	1.39	6.41	0.60	0.39	3.93	20.75	4.88	6.78
Palmas, Las	100	10.07	0.71	2.69	0.38	28.90	0.65	1.71	1.14	7.53
Pontevedra	100	5.42	1.17	8.19	0.70	2.70	1.08	14.07	2.34	3.48
Rioja, La	100	9.24	4.84	2.86	0.71	1.37	2.66	4.99	2.38	17.72
Salamanca	100	13.87	1.46	10.98	0.52	1.51	2.29	15.19	2.69	3.82
S. C. Tenerife	100	18.11	1.14	1.42	0.44	20.36	1.40	2.04	0.98	8.51
Segovia	100	8.13	1.72	2.90	0.47	0.75	2.37	9.62	3.03	4.60
Sevilla	100	43.16	1.68	1.13	0.74	2.41	1.08	2.79	1.93	10.08
Soria	100	5.19	6.37	1.89	0.31	0.63	1.03	14.28	9.22	10.50
Tarragona	100	2.24	9.74	1.27	0.49	0.20	0.89	4.56	2.14	39.00
Teruel	100	5.03	19.55	1.35	0.49	0.38	0.67	1.59	2.73	15.72
Toledo	100	13.79	2.49	2.59	0.49	1.36	1.07	5.19	13.58	7.90
Valencia/València	100	6.98	3.67	0.88	0.87	0.82	0.50	7.18	9.05	7.37
Valladolid	100	8.46	2.93	4.35	1.24	0.92	2.58	20.56	3.75	7.38
Zamora	100	11.93	1.39	4.87	0.32	0.95	2.34	20.16	2.51	4.25
Zaragoza	100	8.70	15.06	1.46	1.23	1.43	1.82	4.31	2.97	17.47
Ceuta	100	53.23	0.52	1.65	0.95	2.30	0.17	0.69	1.73	2.56
Melilla	100	66.95	0.87	0.86	0.34	0.81	0.21	0.87	0.65	4.08

7. Percentage distribution of overnight stays in each province by Autonomous City and Community of origin

Results by provinces

(Conclusion)

Provinces	Comunitat Valenciana	Extremadura	Galicia	Madrid, C. de	Murcia, Región de	Navarra, C. Foral de	País Vasco	Rioja, La	Ceuta	Melilla
TOTAL	7.60	2.40	4.12	22.47	1.88	1.92	5.30	0.82	0.21	0.12
Albacete	20.28	1.08	1.18	17.36	8.16	0.40	1.18	0.19	0.03	-
Alicante/Alacant	24.13	1.99	1.17	29.35	2.53	1.35	4.43	1.06	0.04	0.04
Almería	5.99	1.90	0.68	17.56	8.45	0.57	1.26	0.17	0.22	0.14
Araba/Álava	7.12	0.71	5.94	18.54	0.86	1.53	19.22	0.40	0.11	-
Asturias	4.30	2.35	6.70	25.78	1.21	1.93	7.62	0.89	0.16	0.06
Ávila	7.47	1.90	3.93	35.50	2.61	1.54	3.29	0.42	0.09	0.05
Badajoz	3.23	21.15	3.10	23.56	1.14	1.15	4.23	0.60	0.55	0.09
Balears, Illes	6.17	0.57	5.19	22.55	0.58	1.55	6.90	0.72	0.12	0.03
Barcelona	6.81	1.60	2.36	15.50	1.04	1.42	5.89	0.80	0.16	0.34
Bizkaia	4.98	0.84	5.29	21.90	0.94	2.85	22.22	1.30	0.13	0.04
Burgos	5.32	1.64	6.12	22.97	1.35	1.54	8.62	0.98	0.18	0.01
Cáceres	2.72	21.57	2.69	24.24	0.82	1.02	8.07	0.47	0.35	0.01
Cádiz	1.51	4.38	1.23	24.40	0.67	1.18	3.71	0.55	0.65	0.07
Cantabria	4.00	1.34	4.38	26.72	0.81	4.62	8.60	2.69	0.14	0.01
Castellón/Castelló	19.92	0.81	0.71	28.97	0.50	4.86	5.21	1.41	0.04	0.03
Ciudad Real	8.26	2.12	2.15	26.40	3.66	0.46	4.80	0.33	0.09	0.06
Córdoba	7.07	2.34	1.65	19.46	1.68	0.57	1.90	0.29	0.29	0.05
Coruña, A	5.25	1.02	26.29	24.84	1.44	1.62	3.65	0.57	0.17	0.10
Cuenca	14.64	1.36	3.89	28.92	3.70	0.60	3.55	0.52	0.15	0.02
Guipúzcoa	5.16	1.01	4.94	21.95	1.05	4.38	16.79	1.94	0.09	0.01
Girona	3.04	0.25	0.84	6.82	0.35	1.25	3.74	0.90	0.04	0.07
Granada	5.53	1.53	1.59	15.90	4.71	0.46	1.48	0.35	0.34	0.29
Guadalajara	5.30	2.64	2.73	37.00	0.51	0.94	2.06	0.60	0.08	-
Huelva	0.66	12.34	1.19	20.14	0.34	0.58	3.00	0.14	0.27	0.04
Huesca	11.17	0.82	1.22	15.28	1.59	3.00	6.84	1.21	0.05	-
Jaén	7.88	1.73	0.80	16.84	2.81	0.51	2.08	0.51	0.13	0.04
León	3.54	1.44	7.35	19.59	1.15	1.18	4.75	0.98	0.14	0.02
Lleida	5.22	0.58	0.73	9.79	1.37	0.88	2.25	0.24	0.25	0.16
Lugo	3.28	1.01	35.02	19.58	0.77	1.11	4.30	0.72	0.07	0.02
Madrid	8.44	2.20	5.48	19.56	3.33	1.71	5.77	1.44	0.49	0.28
Málaga	4.71	5.24	0.87	14.36	0.57	0.53	1.93	0.15	0.57	0.35
Murcia	10.55	1.54	1.40	32.20	13.42	0.41	1.11	0.38	0.39	0.06
Navarra	7.19	0.69	3.29	17.40	1.28	11.42	17.33	1.61	0.01	0.10
Ourense	2.61	1.05	50.04	16.72	0.53	0.35	3.88	0.25	0.19	-
Palencia	3.36	2.05	8.71	21.82	1.60	1.78	8.67	0.81	-	0.12
Palmas, Las	2.18	0.35	2.86	34.56	0.32	0.70	5.01	0.18	0.01	0.05
Pontevedra	4.59	1.35	28.61	18.66	1.02	1.27	4.52	0.58	0.23	0.03
Rioja, La	8.04	1.20	3.04	16.79	1.16	2.32	17.75	2.88	0.04	0.01
Salamanca	6.06	3.05	7.60	20.84	1.00	1.35	6.40	0.64	0.44	0.29
S. C. Tenerife	1.38	0.54	2.21	34.23	0.40	0.94	5.67	0.19	0.03	0.00
Segovia	7.11	2.84	4.37	43.38	2.58	1.23	4.34	0.40	0.17	0.02
Sevilla	5.97	3.11	2.34	17.28	1.43	1.18	2.74	0.32	0.56	0.09
Soria	7.13	0.99	1.90	30.29	1.02	2.53	5.77	0.88	-	0.08
Tarragona	6.26	0.38	0.78	9.00	1.08	9.10	10.34	2.32	0.02	0.20
Teruel	31.49	0.88	1.12	11.33	1.79	1.28	4.09	0.49	0.02	-
Toledo	8.45	2.25	3.54	26.11	2.24	1.52	6.61	0.60	0.21	0.03
Valencia/València	12.91	1.70	1.54	39.69	2.44	1.25	2.43	0.46	0.05	0.21
Valladolid	4.79	2.17	6.59	25.15	1.51	0.84	5.71	0.95	0.07	0.05
Zamora	4.46	5.26	12.39	18.95	1.72	1.35	6.38	0.71	0.07	-
Zaragoza	7.60	1.18	3.36	21.80	1.77	1.69	6.14	1.74	0.13	0.14
Ceuta	4.68	1.82	0.52	19.59	0.65	-	0.43	-	8.41	0.09
Melilla	1.86	0.17	0.78	12.17	2.76	0.10	1.44	0.13	0.75	4.20

8. Travellers, overnight stays and average stay by country of residence

Results by countries

Countries	Number of travellers		Overnight stays	
	Total	%	Total	%
TOTAL	10,088,978	100.00	38,045,430	100.00
Residents in Spain	5,098,188	50.53	14,092,994	37.04
Residents abroad	4,990,790	49.47	23,952,436	62.96
Total Residents abroad	4,990,790	100.00	23,952,436	100.00
Total Residents in U.E. (without Spain)	3,658,177	73.30	19,441,467	81.17
- Germany	851,748	17.07	5,843,983	24.40
- Austria	49,263	0.99	247,687	1.03
- Belgium	173,539	3.48	924,092	3.86
- Denmark	66,796	1.34	369,921	1.54
- Finland	20,854	0.42	79,626	0.33
- France	520,928	10.44	1,599,529	6.68
- Greece	14,280	0.29	36,561	0.15
- Ireland	65,221	1.31	322,960	1.35
- Italy	327,658	6.57	1,299,353	5.42
- Luxembourg	8,861	0.18	53,206	0.22
- Netherlands	213,311	4.27	1,048,782	4.38
- Poland	82,499	1.65	454,730	1.90
- Portugal	138,418	2.77	438,820	1.83
- United Kingdom	943,330	18.90	5,823,387	24.31
- Czech Republic	30,673	0.61	199,519	0.83
- Sweden	75,307	1.51	385,301	1.61
- Rest of UE*	75,489	1.51	314,011	1.31
Norway	64,656	1.30	316,534	1.32
Russia	165,711	3.32	1,170,457	4.89
Switzerland	100,514	2.01	543,723	2.27
Rest of Europe	95,789	1.92	371,029	1.55
Japan	44,249	0.89	75,699	0.32
United States of America	255,100	5.11	561,042	2.34
Rest of America	301,465	6.04	675,738	2.82
African's countries	64,248	1.29	166,320	0.69
Rest of the world	240,881	4.83	630,425	2.63

*Countries included in the Rest of UE: Bulgaria, Cyprus, Slovakia, Slovenia, Estonia, Hungary, Latvia, Lithuania, Malta and Romania

Hotel Price Index (HPI). 2008 Base

July 2011

Provisional data

General Autonomous Cities and Communities and National Indices

	Index	Interannual variation rate
TOTAL	94.0	0.6
Andalucía	92.5	-0.3
Aragón	61.1	-4.6
Asturias, Principado de	93.7	0.2
Balears, Illes	98.2	0.9
Canarias	95.6	0.6
Cantabria	95.6	-1.1
Castilla y León	94.9	-1.8
Castilla - La Mancha	94.9	-2.3
Cataluña	95.8	2.5
Comunitat Valenciana	93.3	0.8
Extremadura	92.8	0.4
Galicia	97.1	-1.7
Madrid, Comunidad de	84.7	-1.2
Murcia, Región de	83.8	-3.3
Navarra, Comunidad Foral de	96.4	2.4
País Vasco	94.9	2.7
Rioja, La	90.0	0.9
Ceuta	124.0	5.5
Melilla	93.5	-4.1

National General Index and breakdown by categories

	Index	Interannual variation rate
TOTAL	94.0	0.6
HOTELS: Gold stars		
Five	87.5	2.0
Fourth	92.7	1.2
Three	94.6	-0.8
Two	99.3	-0.1
One	105.8	5.1
HOSTALS: Silver stars		
Three and two	100.8	2.0
One	98.1	0.0

Indicators on the Profitability of the Hotel Sector

July 2011

Provisional data

ADR and RevPAR for Autonomous Cities and Communities and national indices

	ADR (in euros)	Variation Rate variation	RevPar (in euros)	Variation Rate variation
TOTAL	75.4	2.1	51.1	8.6
Andalucía	88.3	0.4	54.2	2.1
Aragón	55.9	-0.5	20.3	5.4
Asturias, Principado de	63.1	2.0	33.3	4.0
Balears, Illes	73.5	2.0	65.6	10.7
Canarias	70.2	2.9	53.6	13.2
Cantabria	78.1	0.8	42.5	1.1
Castilla y León	55.6	-1.7	22.2	0.4
Castilla - La Mancha	57.9	-3.0	17.5	-5.6
Cataluña	80.9	5.0	59.9	11.0
Comunitat Valenciana	73.9	5.1	52.1	14.9
Extremadura	56.2	0.0	20.2	8.5
Galicia	59.2	-0.9	26.9	-6.9
Madrid, Comunidad de	77.8	-0.3	47.0	9.5
Murcia, Región de	69.7	-5.6	35.3	0.4
Navarra, Comunidad Foral de	81.5	-1.1	39.9	3.2
País Vasco	80.6	-2.5	54.7	2.3
Rioja, La	61.9	6.7	29.8	8.2
Ceuta	68.7	-16.6	43.8	-11.5
Melilla	65.7	-1.2	47.1	14.2

National ADR and RevPar and breakdown by categories

	ADR (in euros)	Variation Rate interannual	RevPar (in euros)	Variation Rate interannual
TOTAL	75.4	2.1	51.1	8.6
HOTELS: Gold stars				
Five	160.1	5.2	102.6	11.5
Four	85.8	1.2	65.2	7.1
Three	64.1	1.1	48.9	8.2
Two	57.6	2.7	31.5	5.4
One	52.3	5.0	23.9	7.9
GUESTHOUSES: Silver stars				
Three and two	50.3	1.8	21.1	3.4
One	43.7	6.0	17.1	21.4

Due to the updating in the establishments directory carried out in Navarra in January 2011 and in Extremadura in March 2011, the data to be published for Navarra, Extremadura and the national total from those dates are not directly comparable with the data published last year, therefore, data link coefficients have been calculated to allow the comparison of data between different years. These coefficients are available in INE website (www.ine.es/en/welcome_en.htm)