

23 August 2012

**Hotel Tourism Short-Term Trends (HOS/HPI/IPHS)
July 2012. Provisional data**

Overnight stays in hotel establishments decrease 1.4% in July, as compared with the same month in 2011

Hotels earn 52.0 euros per available room and invoice an average of 78.1 euros per occupied room

During the month of July, 37.5 million overnight stays were recorded in hotel establishments, indicating a 1.4% decrease as compared with the same month in 2011. Overnight stays for residents decreased 11.0%, while for non-residents experienced an increase of 4.3%.

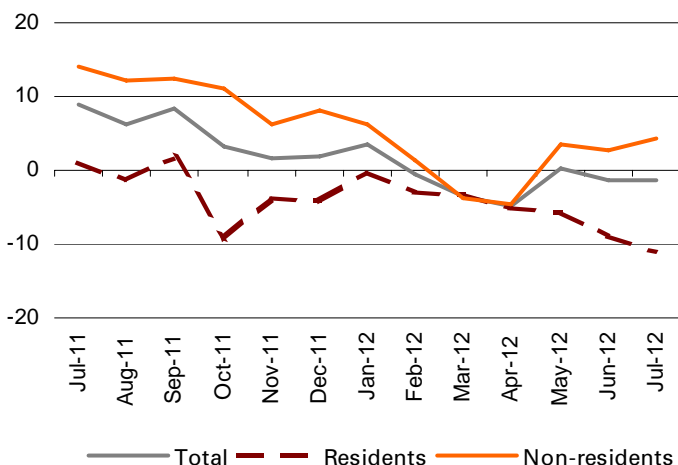
The average stay increased 2.4% as compared with July 2011, standing at 3.9 nights per guest.

During the first seven months of the year, overnight decreased 1.4% as compared with the same period in 2011.

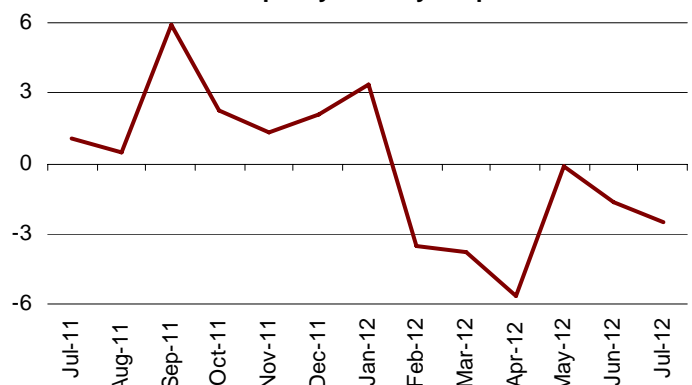
In turn, **the Hotel Price Index (HPI) registered a 1.3% increase in July**. Regarding the indicators on the profitability of the hotel sector, invoicing per occupied room reached an average value of 78.1 euros, and income per available room stood at 52.0 euros.

In terms of occupancy, 65.5% of the available bedplaces were filled in July, indicating a 2.5% decrease as compared with the same month the previous year. The weekend occupancy rate by bedplaces stood at 70.2%, with an increase of 0.8%.

Interannual rates of overnight stays in %



Interannual occupancy rates by bedplaces in %

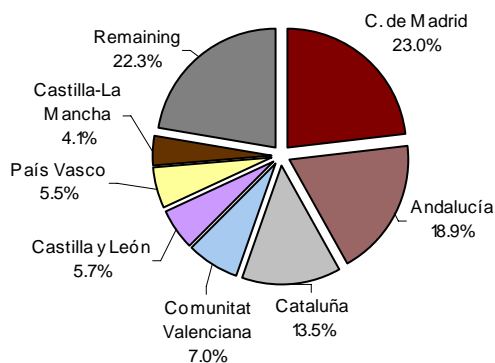


Overnight stays of guests resident abroad

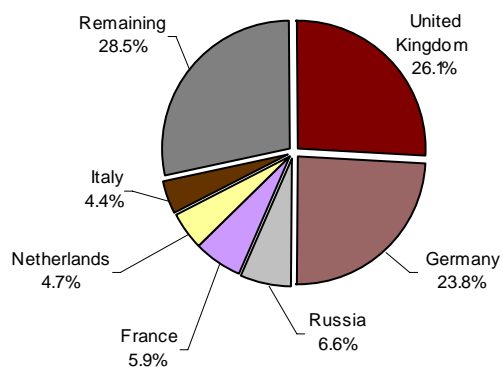
Guests from the United Kingdom and Germany registered rates of 26.1% and 23.8%, respectively, of the total overnight stays by foreign nationals in July. The British market experienced a 12.5% interannual increase, and the German market increased 1.5%.

Overnight stays of guests from Russia, France and Netherlands (the following countries of origin) registered interannual rates of 38.7 %, -9.3% and 11.1% respectively.

Overnight stays of guests resident in Spain by Autonomous Community of origin in %



Overnight stays of guests resident abroad by country of origin in %

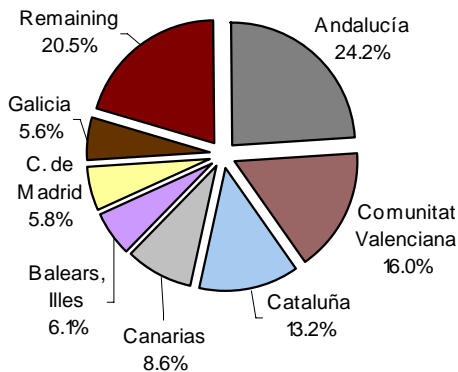


Main destinations

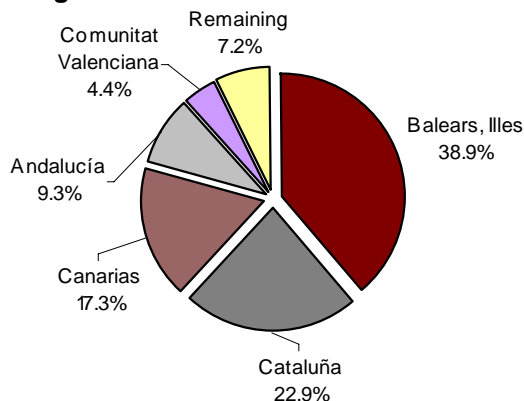
The main destination chosen by non-residents was Illes Balears. In this Autonomous Community, overnight stays by foreign nationals increased 4.6% as compared with July 2011. It was followed by Cataluña, with an interannual rate of 5.9%, and Canarias, with an increase of 2.9%.

Andalucía, Comunitat Valenciana and Cataluña were the main destinations of guests resident in Spain, with interannual rates for overnight stays of -7.1%, -8.4% and -15.0%, respectively.

Distribution of overnight stays of guests resident in Spain in %



Distribution of overnight stays of guests resident abroad in %



Results by Autonomous Community, tourist area and tourist site

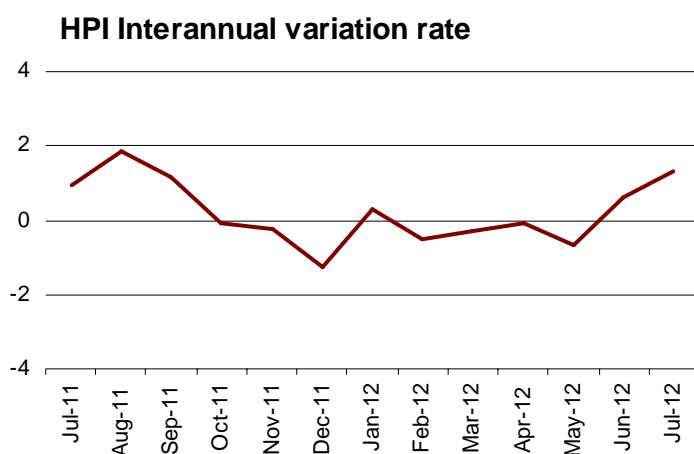
During the month of July, Illes Balears was the Autonomous Community with the highest occupancy rate by bedplaces (90.4%), followed by Canarias (74.2%) and Cataluña (73.5%).

The tourist areas with the highest occupancy and overnight stay rates were located on the islands and the coasts. The zone of Palma-Calvià presented the highest occupancy rate by bedplaces (92.2%). The island of Mallorca registered more than 7.8 million overnight stays in July and the highest weekend occupancy rate by bedplaces (92.9%).

The tourist sites with the highest number of overnight stays were Barcelona, Calvià and Madrid. Muro reached the highest occupancy rate by bedplaces (98.2%), whereas Santa Susanna reached the highest weekend occupancy (98.3%).

Evolution of the Hotel Price Index

The interannual rate of the HPI stood at 1.3% in July, this rate being 0.7 points higher than that obtained last month, and 0.4 points that registered one year ago.



HPI by Autonomous Community

The four Autonomous Communities (Illes Balears, Cataluña, Andalucía and Canarias) that carried 73.5% of the total weight of the HPI in the month of July, showed uneven behaviour.

Illes Balears, which carried the greatest load in the weighting structure this month, presented an interannual rate of 6.9%, that is, 1.8 points higher than that estimated in June. Hotel prices experienced an increase of 1.5% in Cataluña, as compared with the decrease of 0.3% of the previous month. Andalucía presented an interannual variation of -1.7%, as compared with the -1.4%, observed last month. Canarias presented an interannual variation of 2.3%, that is, 0.7 points more than June.

HPI by category

Hotel prices increased in five-gold-star hotels (2.9%), three-gold-star hotels (2.5%), three and two-silver-star hotels (2.3%), four-gold-star hotels (0.6%) and two-gold-star hotels (0.4%) in July.

The other category presented a decrease in the interannual rate: one-silver-star hotels (-2.9%) and one-gold-star (-2.2%).

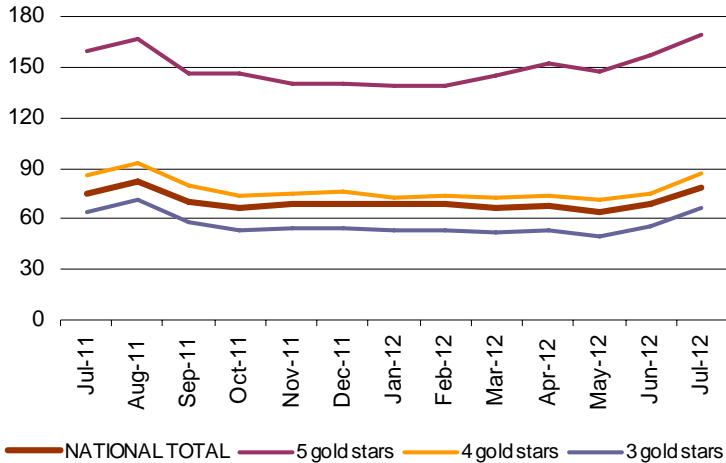
Indicators on the Profitability of the Hotel Sector

The average invoicing by hotels per occupied room (ADR) in July was 78.1 euros, indicating an increase of 2.7 euros as compared with the same month in 2011.

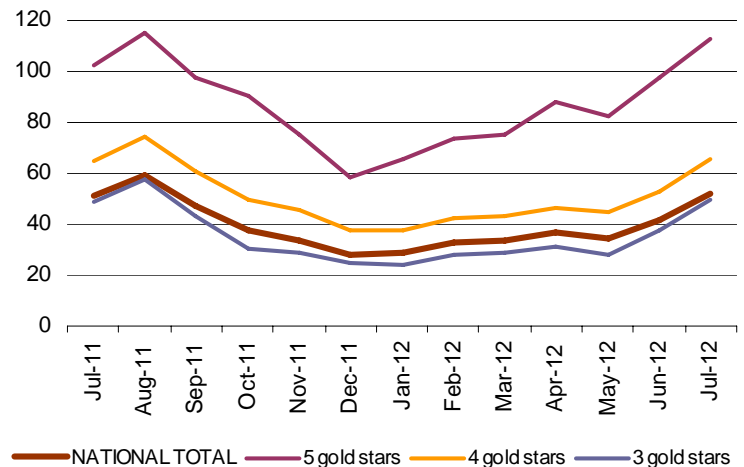
In turn, income per available room (RevPAR), that was conditioned by the occupancy registered in the hotel establishments, reached 52.0 euros, with an increase of 0.9 euros as compared with July 2011.

By category, the average invoicing was 168.9 euros for five-star hotels, 87.0 euros for four-star hotels and 66.0 euros for three-star hotels. Income per available room for these same categories was 112.6, 65.5 and 49.8 euros, respectively.

ADR



RevPAR



For further information see INEbase-www.ine.es/en/welcome_en.htm All press releases at: www.ine.es/en/prensa/prensa_en.htm

Press Office: Telephone numbers: 91 583 93 63 / 94 08 – Fax: 91 583 90 87 - gprensa@ine.es

Information Area: Telephone number: 91 583 91 00 – Fax: 91 583 91 58 – www.ine.es/infoine/?L=1

Tourist Accommodation Occupancy Survey (Hotels and similar establishments)

July 2012

Provisional data

1. Travellers, overnight stays and average stay by categories of establishment

Category	Number of travellers			Number of overnight stays			Average stay
	Total	Residents in Spain	Residents abroad	Total	Residents in Spain	Residents abroad	
TOTAL	9,681,279	4,576,389	5,104,890	37,462,897	12,553,790	24,909,106	3.87
HOTELS: Golden stars							
Five	496,202	178,491	317,711	1,761,640	464,006	1,297,634	3.55
Four	4,061,003	1,929,725	2,131,277	16,401,754	5,642,251	10,759,504	4.04
Three	3,133,422	1,317,947	1,815,475	13,952,720	3,856,535	10,096,185	4.45
Two	790,515	441,715	348,801	2,371,740	1,056,437	1,315,303	3.00
One	299,225	182,508	116,717	753,613	391,313	362,300	2.52
INNS: Silver stars							
Two and three	484,535	292,767	191,768	1,236,912	606,119	630,793	2.55
One	416,377	233,235	183,142	984,518	537,129	447,388	2.36
Interannual rate	-3.68	-10.15	2.97	-1.36	-10.98	4.32	2.41
Cumulative interannual rate	-1.83	-4.62	1.40	-1.37	-6.28	1.74	0.47

2. Open establishments, capacity, occupancy and employed personnel by categories of establishment

Category	Estimated open establishments	Estimated bedplaces	Level of occupancy			Employed personnel
			Per bedplaces	Per bedplaces at weekend	Per rooms	
TOTAL	17,069	1,740,454	65.46	70.17	66.50	238,626
HOTELS: Golden stars						
Five	273	87,091	63.80	70.12	66.85	26,052
Four	2,228	684,981	72.98	77.01	75.32	106,341
Three	3,002	555,450	74.92	79.07	75.55	70,213
Two	2,185	145,585	50.35	57.36	52.41	13,870
One	1,408	60,085	39.40	46.12	42.02	5,284
INNS: Silver stars						
Two and three	3,431	110,145	35.82	41.99	37.31	9,574
One	4,542	97,118	32.22	37.16	34.27	7,293
Interannual rate	0.36	0.73	-2.50	0.80	-1.77	-1.67

3. Travellers, overnight stays, occupancy, average stay and employed personnel

Results by areas and tourist sites

	Travellers		Overnight stays		Level of occupancy			Average stay	Employed personnel
	Residents in Spain	Residents abroad	Residents in Spain	Residents abroad	Per bedplac	Per bedplaces at weekend	Per rooms		

Tourist areas with a greater level of occupancy per month

Palma - Calvià	48,820	438,085	192,247	2,702,379	92.16	92.62	92.48	5.94	13,840
Isla de Mallorca	80,889	1,089,550	346,879	7,539,551	91.65	92.91	92.14	6.74	37,980
Islas de Ibiza-Formentera	44,913	254,440	194,881	1,580,113	88.77	90.11	90.03	5.93	8,209
Costa Daurada	150,027	191,692	508,384	1,309,729	85.63	85.32	84.25	5.32	6,996
Isla de Menorca	39,679	75,091	228,341	575,658	83.29	82.54	85.19	7.01	4,131
Isla de Lanzarote	36,886	77,360	222,644	694,502	83.27	82.10	81.44	8.03	5,344
Barcelona	140,868	593,993	271,020	1,576,518	82.71	84.73	87.21	2.51	12,180
Costa De Gipuzkoa	34,664	39,306	73,160	87,420	81.24	87.07	87.36	2.17	1,148

Tourist areas with a greater number of overnight stays per month *

Costa del Sol	229,407	243,088	805,965	1,259,687	75.00	81.86	77.30	4.37	12,933
Isla de Tenerife	101,849	181,638	430,713	1,570,400	73.68	76.27	73.62	7.06	14,571
Costa Brava	144,727	303,770	351,126	1,518,720	71.85	78.43	71.39	4.17	9,329
Costa Blanca	246,811	139,596	1,048,131	769,756	78.84	85.25	77.04	4.70	9,029
Sur de Tenerife	56,476	159,579	250,375	1,400,072	79.54	81.15	79.81	7.64	11,454
Isla de Gran Canaria	66,637	123,669	285,028	1,071,183	75.07	73.49	73.55	7.13	9,588
Sur de Gran Canaria	48,154	117,525	237,066	1,050,370	80.28	78.33	78.48	7.77	8,734
Isla de Fuerteventura	19,708	103,377	94,875	904,568	70.19	73.88	76.62	8.12	6,522

Tourist sites with a greater level of occupancy per month

Muro	4,167	70,794	25,192	575,684	98.16	94.49	96.79	8.02	2,712
Santa Margalida	4,051	53,841	18,542	467,592	97.97	98.10	97.36	8.40	1,960
Santa Susanna	6,283	47,220	21,659	315,055	96.30	98.29	94.00	6.29	1,203
Salou	52,610	128,940	209,926	903,519	95.82	92.07	91.96	6.13	3,424
Calvià	14,122	218,385	79,867	1,494,793	93.60	93.91	93.81	6.77	7,160
Eivissa	12,674	49,798	53,390	278,702	93.50	95.67	93.28	5.32	1,784
Sant Llorenç Des Cardassar	2,358	102,777	12,337	731,973	92.67	91.66	91.02	7.08	3,218
Sant Antoni De Portmany	6,813	59,446	30,932	375,519	92.21	94.85	92.22	6.13	1,439
Sant Josep De Sa Talaia	5,491	55,249	25,690	343,971	91.92	92.14	93.73	6.09	1,695
Capdepera	1,519	64,474	8,116	466,463	91.71	89.96	94.00	7.19	2,359

Tourist sites with a greater number of overnight stays per month *

Barcelona	132,493	575,503	249,536	1,525,970	83.07	84.82	87.26	2.51	11,866
Madrid	300,411	383,317	513,379	785,023	51.99	57.26	60.61	1.90	12,196
Benidorm	131,397	79,057	682,644	568,294	90.45	94.38	87.80	5.94	5,700
Palma	34,792	211,840	100,816	1,100,126	88.69	90.51	91.57	4.87	6,248
San Bartolomé De Tirajana	40,534	86,567	200,073	795,864	80.98	77.72	78.14	7.84	7,132
Lloret De Mar	16,576	133,754	61,493	860,398	85.70	86.81	84.54	6.13	3,271
Adeje	27,230	83,281	130,572	744,465	79.38	79.43	78.94	7.92	6,454
Pájara	10,230	64,928	60,191	599,871	71.93	74.08	77.36	8.78	4,439
Alcúdia	2,665	76,243	14,768	584,133	91.08	97.09	94.81	7.59	3,411
Torremolinos	50,932	58,685	200,979	386,158	85.76	91.01	84.02	5.36	2,949

* Not taken into account those included in the preceding table because they are in the bigger level of occupancy tables too.

4. Travellers, overnight stays and average stay

Results by Autonomous Cities and Communities and provinces

	Number of travellers			Overnight stays			Average stay
	Total	Residents in Spain	Residents abroad	Total	Residents in Spain	Residents abroad	
TOTAL	9,681,279	4,576,389	5,104,890	37,462,897	12,553,790	24,909,106	3.87
Andalucía	1,557,419	959,245	598,174	5,345,078	3,038,450	2,306,629	3.43
Almería	161,209	137,243	23,966	723,782	582,450	141,332	4.49
Cádiz	268,622	188,647	79,976	956,315	627,526	328,788	3.56
Córdoba	70,962	40,403	30,559	121,195	69,565	51,629	1.71
Granada	177,285	99,577	77,708	422,503	266,444	156,060	2.38
Huelva	158,022	130,230	27,792	595,649	449,943	145,707	3.77
Jaén	36,393	30,969	5,424	71,186	63,050	8,136	1.96
Málaga	506,749	246,371	260,378	2,134,646	836,878	1,297,768	4.21
Sevilla	178,176	85,806	92,371	319,803	142,594	177,209	1.79
Aragón	200,278	153,479	46,799	400,092	313,446	86,647	2.00
Huesca	75,986	59,014	16,972	182,295	143,686	38,609	2.40
Teruel	26,643	23,065	3,577	47,055	41,587	5,469	1.77
Zaragoza	97,649	71,399	26,250	170,742	128,173	42,569	1.75
Asturias, Principado de	170,515	144,824	25,691	380,906	334,226	46,680	2.23
Balears, Illes	1,584,563	165,481	1,419,082	10,465,423	770,101	9,695,322	6.60
Canarias	730,122	237,092	493,030	5,376,069	1,077,379	4,298,690	7.36
Palmas, Las	427,637	123,231	304,406	3,272,800	602,547	2,670,253	7.65
Santa Cruz de Tenerife	302,486	113,861	188,625	2,103,269	474,832	1,628,437	6.95
Cantabria	143,736	116,209	27,527	333,239	274,938	58,301	2.32
Castilla y León	401,596	299,020	102,576	649,243	499,325	149,919	1.62
Ávila	24,259	20,976	3,283	41,255	35,228	6,028	1.70
Burgos	79,003	44,793	34,210	116,570	72,144	44,426	1.48
León	67,805	53,457	14,348	105,764	87,731	18,033	1.56
Palencia	20,481	15,949	4,531	33,950	27,732	6,218	1.66
Salamanca	78,539	54,737	23,803	133,777	94,704	39,073	1.70
Segovia	38,034	30,300	7,734	62,770	49,427	13,343	1.65
Soria	19,260	17,637	1,623	36,388	33,629	2,759	1.89
Valladolid	51,369	40,651	10,719	83,617	67,557	16,060	1.63
Zamora	22,846	20,520	2,326	35,151	31,173	3,978	1.54
Castilla-La Mancha	160,670	129,026	31,644	274,552	227,391	47,161	1.71
Albacete	25,841	24,012	1,829	59,450	56,467	2,983	2.30
Ciudad Real	30,675	27,419	3,256	53,730	48,048	5,682	1.75
Cuenca	23,617	19,244	4,373	36,620	30,209	6,411	1.55
Guadalajara	19,881	16,281	3,600	33,893	27,900	5,993	1.70
Toledo	60,656	42,069	18,586	90,859	64,767	26,092	1.50
Cataluña	2,058,413	679,418	1,378,995	7,375,560	1,660,510	5,715,050	3.58
Barcelona	1,127,164	274,840	852,324	3,384,652	569,184	2,815,468	3.00
Girona	473,005	163,676	309,329	1,915,760	383,963	1,531,797	4.05
Lleida	74,703	57,846	16,857	155,758	122,274	33,484	2.09
Tarragona	383,541	183,056	200,486	1,919,391	585,089	1,334,301	5.00
Comunitat Valenciana	801,684	531,930	269,754	3,112,774	2,007,578	1,105,196	3.88
Alicante/Alacant	403,935	260,373	143,562	1,856,560	1,074,756	781,804	4.60
Castellón/Castelló	125,105	100,193	24,912	559,674	473,036	86,638	4.47
Valencia/València	272,644	171,364	101,280	696,539	459,786	236,754	2.55
Extremadura	111,363	95,789	15,574	181,181	157,777	23,404	1.63
Badajoz	63,417	54,262	9,155	95,447	82,184	13,263	1.51
Cáceres	47,946	41,528	6,418	85,734	75,593	10,141	1.79
Galicia	381,689	292,166	89,524	858,049	698,898	159,151	2.25
Coruña, A	165,726	117,426	48,300	346,447	262,526	83,921	2.09
Lugo	61,668	45,629	16,039	98,376	79,554	18,822	1.60
Ourense	25,032	22,423	2,608	43,411	38,966	4,445	1.73
Pontevedra	129,263	106,687	22,577	369,814	317,851	51,962	2.86
Madrid, Comunidad de	858,221	432,744	425,477	1,593,104	728,059	865,045	1.86
Murcia, Región de	101,074	86,003	15,071	298,283	256,775	41,508	2.95
Navarra, Comunidad Foral de	91,094	58,880	32,214	178,320	119,185	59,136	1.96
País Vasco	272,218	150,874	121,344	535,585	305,833	229,752	1.97
Araba/Álava	39,672	23,807	15,865	72,610	44,175	28,434	1.83
Bizkaia	127,041	74,020	53,020	240,668	146,835	93,833	1.89
Gipuzkoa	105,505	53,047	52,458	222,307	114,823	107,484	2.11
Rioja, La	44,884	36,371	8,513	79,441	65,176	14,265	1.77
Ceuta	7,726	5,260	2,465	15,223	10,678	4,544	1.97
Melilla	4,013	2,577	1,436	10,774	8,067	2,707	2.69

5. Establishment, capacity, occupancy and employed personnel

Results by Autonomous Cities and Communities and provinces

	Estimated open establishments	Estimated bedplaces	Level of occupancy			Employed personnel
			Per bedplaces	Per bedplaces at weekends	Per rooms	
TOTAL	17,069	1,740,454	65.46	70.17	66.50	238,626
Andalucía	2,632	281,632	59.36	65.47	60.88	38,252
Almería	205	37,888	60.30	63.72	65.69	3,787
Cádiz	508	46,780	63.66	72.23	66.93	7,280
Córdoba	198	10,899	35.49	36.84	36.67	1,335
Granada	415	29,957	44.93	51.66	47.27	3,284
Huelva	167	28,141	66.49	71.34	62.77	3,940
Jaén	184	9,179	24.78	31.93	24.83	1,060
Málaga	624	92,456	71.44	78.31	73.55	14,190
Sevilla	332	26,333	38.73	43.89	41.90	3,375
Aragón	866	42,473	30.17	41.51	34.31	4,410
Huesca	356	17,456	33.40	43.87	35.72	1,779
Teruel	212	7,008	21.49	32.76	24.59	783
Zaragoza	298	18,010	30.43	42.62	36.69	1,848
Asturias, Principado de	696	28,389	42.87	53.09	44.89	3,199
Balears, Illes	1,292	338,238	90.41	91.52	91.21	50,319
Canarias	504	223,659	74.22	75.56	74.70	36,941
Palmas, Las	258	134,051	75.51	75.76	76.47	21,455
Santa Cruz de Tenerife	245	89,608	72.29	75.25	72.14	15,486
Cantabria	494	22,453	47.30	56.93	49.52	2,999
Castilla y León	1,452	62,471	33.25	45.22	35.74	7,769
Ávila	109	4,999	26.42	46.25	30.76	633
Burgos	223	9,229	40.31	46.27	39.73	1,036
León	298	11,185	30.34	40.61	32.86	1,255
Palencia	94	3,409	31.93	43.37	37.44	343
Salamanca	215	11,626	36.78	49.99	38.78	1,479
Segovia	145	6,162	32.40	47.78	34.71	810
Soria	129	4,201	27.84	42.52	30.95	500
Valladolid	143	8,174	32.80	44.40	36.22	1,171
Zamora	94	3,487	32.23	42.36	36.21	542
Castilla-La Mancha	859	35,499	24.74	32.71	28.02	3,332
Albacete	175	7,573	25.28	29.03	27.44	744
Ciudad Real	192	7,818	22.07	28.33	28.31	733
Cuenca	158	5,697	20.69	29.92	22.63	560
Guadalajara	132	4,776	22.84	31.24	25.65	411
Toledo	202	9,636	29.81	41.52	32.54	884
Cataluña	2,515	302,471	73.46	77.12	74.61	39,149
Barcelona	1,084	136,212	77.10	80.00	80.24	19,685
Girona	771	82,368	69.03	76.17	68.89	10,048
Lleida	326	17,284	28.92	34.42	31.18	1,786
Tarragona	334	66,606	83.07	83.51	81.46	7,630
Comunitat Valenciana	1,124	136,173	68.66	76.37	67.72	17,086
Alicante/Alacant	495	72,642	75.96	82.63	73.79	9,489
Castellón/Castelló	237	25,032	66.36	72.31	63.15	3,208
Valencia/València	391	38,499	56.40	67.19	59.07	4,389
Extremadura	455	20,468	28.29	35.61	32.04	2,500
Badajoz	199	9,797	31.18	37.89	35.95	1,117
Cáceres	255	10,671	25.63	33.52	28.42	1,383
Galicia	1,803	73,540	37.21	42.20	39.11	8,439
Coruña, A	679	27,540	40.17	43.35	42.25	2,896
Lugo	331	10,065	31.30	33.52	33.42	1,104
Ourense	196	6,430	21.71	25.56	24.88	725
Pontevedra	598	29,504	39.84	47.72	41.27	3,714
Madrid, Comunidad de	1,179	104,381	48.87	54.27	55.96	14,677
Murcia, Región de	199	20,062	46.14	54.14	47.23	2,461
Navarra, Comunidad Foral de	309	13,254	42.90	47.18	43.57	1,655
País Vasco	528	27,391	61.89	70.56	69.67	4,300
Araba/Álava	75	4,498	50.87	64.23	57.93	623
Bizcaia	205	13,014	58.90	68.30	67.98	1,990
Gipuzkoa	248	9,879	70.86	76.41	77.02	1,687
Rioja, La	139	6,230	40.86	56.96	42.99	858
Ceuta	12	819	59.96	55.76	52.48	139
Melilla	11	851	40.84	43.24	53.51	141

HOS (TABLES ANNEX) - JULY 2012 (4/9)

Provisional data

6. Percentage distribution of Spanish travellers in each province by Autonomous City and Community of origin

Results by provinces

(Continued)

Provincias	Total	Andalucía	Aragón	Asturias, P. de	Balears, Illes	Canarias	Cantabria	Castilla y León	Castilla-La Mancha	Cataluña
TOTAL	100	18.60	3.11	2.50	1.35	3.20	1.26	5.26	3.63	15.44
Albacete	100	10.19	1.19	1.44	0.38	0.33	0.69	3.07	21.18	6.74
Alicante/Alacant	100	6.87	1.96	1.00	0.49	0.56	0.85	5.38	9.18	5.48
Almería	100	48.43	0.61	0.77	0.19	0.15	0.46	2.29	4.43	4.27
Araba/Álava	100	8.39	4.05	2.16	0.96	1.59	2.16	6.98	2.89	15.58
Asturias	100	7.47	1.72	11.39	0.75	1.33	3.21	14.37	3.36	6.49
Ávila	100	11.69	1.44	2.78	0.58	1.39	0.96	11.06	3.90	3.88
Badajoz	100	21.42	2.13	3.32	0.37	1.00	1.06	6.76	4.78	4.18
Balears, Illes	100	9.30	1.79	2.34	13.47	0.51	2.11	3.00	1.11	23.92
Barcelona	100	8.33	2.93	1.25	2.41	2.49	1.10	2.43	1.69	40.18
Bizkaia	100	7.77	2.80	3.41	1.14	2.39	1.48	6.00	2.46	13.84
Burgos	100	10.03	3.05	2.67	0.60	0.93	2.79	13.98	3.85	13.05
Cáceres	100	13.70	1.45	4.62	0.27	1.16	1.34	6.33	3.22	5.01
Cádiz	100	51.73	0.88	1.28	0.53	1.03	0.78	3.67	2.53	3.47
Cantabria	100	5.88	4.09	4.50	0.66	1.51	4.87	17.05	4.42	6.15
Castellón/Castelló	100	2.58	8.30	0.87	0.29	0.13	0.51	6.01	7.02	13.07
Ciudad Real	100	17.10	1.52	1.51	0.38	0.60	0.90	3.33	15.27	7.90
Córdoba	100	47.80	2.45	1.77	0.33	0.96	0.61	2.68	4.01	8.16
Coruña, A	100	8.40	1.70	4.27	1.14	2.33	1.15	5.82	2.03	7.46
Cuenca	100	8.30	2.40	1.73	0.86	0.50	1.40	5.35	11.87	7.39
Gipuzkoa	100	6.37	4.58	2.16	0.56	1.94	1.40	5.80	2.52	18.39
Girona	100	3.96	1.48	0.51	0.48	0.39	0.34	1.12	0.54	78.02
Granada	100	56.46	0.93	0.84	0.70	0.67	0.40	1.79	2.61	5.35
Guadalajara	100	7.45	2.66	0.79	0.45	1.12	0.85	4.61	15.62	9.94
Huelva	100	59.38	0.63	0.78	0.06	0.82	0.43	5.02	2.20	1.74
Huesca	100	5.51	25.75	1.04	0.39	1.01	0.93	2.69	2.88	23.87
Jaén	100	51.97	0.69	0.80	0.39	0.60	0.45	2.46	3.74	4.81
León	100	5.23	2.04	14.72	0.52	0.72	3.09	18.21	2.10	7.20
Lleida	100	5.17	2.12	0.47	0.81	0.76	0.40	1.48	2.24	68.56
Lugo	100	7.59	1.40	5.54	0.51	1.14	1.88	6.05	1.72	9.93
Madrid	100	14.42	2.62	3.47	2.02	4.14	1.89	4.97	2.78	12.04
Málaga	100	65.47	0.99	0.88	0.86	0.86	0.49	1.92	2.70	3.38
Murcia	100	13.86	0.98	0.75	0.55	0.51	0.36	2.69	8.81	6.64
Navarra	100	7.42	4.43	2.06	0.49	1.03	1.68	4.27	2.69	20.68
Ourense	100	5.84	1.10	4.79	0.34	0.64	0.66	7.71	2.24	3.53
Palencia	100	4.98	4.59	5.68	0.38	0.74	3.75	20.17	3.41	7.55
Palmas, Las	100	8.38	0.67	1.39	1.11	38.09	0.55	1.50	0.64	6.40
Pontevedra	100	5.16	1.01	7.69	0.51	1.17	1.50	11.20	1.72	4.84
Rioja, La	100	5.48	5.32	3.73	1.02	1.56	2.76	6.80	2.39	17.84
Salamanca	100	17.03	1.49	5.89	0.54	2.50	2.39	14.40	2.67	4.68
S. C. Tenerife	100	13.07	0.79	1.32	0.25	34.01	0.80	1.73	0.88	3.62
Segovia	100	9.46	1.20	2.98	0.69	0.60	1.38	7.77	4.16	4.65
Sevilla	100	44.85	1.49	1.01	0.64	2.16	1.02	2.47	1.96	10.20
Soria	100	4.92	7.95	1.79	0.55	0.83	1.01	11.56	3.47	13.21
Tarragona	100	3.21	11.36	0.85	0.93	0.49	0.77	2.62	1.66	46.11
Teruel	100	5.37	18.00	0.69	0.36	0.81	0.55	2.09	3.63	17.95
Toledo	100	11.44	2.22	2.06	0.86	0.96	1.11	4.41	16.95	8.31
Valencia/València	100	8.37	3.19	0.90	1.37	1.58	0.70	4.24	7.56	10.01
Valladolid	100	9.17	1.96	4.57	0.81	1.26	2.66	17.56	3.27	9.58
Zamora	100	9.78	1.54	5.47	0.46	0.80	1.34	17.12	4.31	7.09
Zaragoza	100	7.30	18.18	1.67	0.92	1.50	1.28	4.64	3.03	19.57
Ceuta	100	50.14	0.21	1.18	0.43	1.84	0.21	0.43	0.75	1.93
Melilla	100	50.35	1.51	0.58	1.08	2.14	0.14	2.67	1.36	3.23

6. Percentage distribution of Spanish travellers in each province by Autonomous City and Community of origin

Results by provinces

(Conclusion)

Provinces	Comunitat Valenciana	Extremadura	Galicia	Madrid, de	C.	Murcia, Región de	Navarra, C. Foral de	País Vasco	Rioja, La	Ceuta	Melilla
TOTAL	7.79	2.11	4.78	20.40		2.14	1.69	5.52	0.79	0.21	0.21
Albacete	23.97	1.67	1.54	17.71		6.82	0.54	2.05	0.32	0.14	0.04
Alicante/Alacant	27.70	1.36	1.04	29.33		3.99	1.12	2.98	0.62	0.04	0.05
Almería	7.89	0.85	0.60	18.74		8.28	0.51	0.88	0.13	0.26	0.28
Araba/Álava	6.13	1.17	4.22	21.88		1.02	1.89	17.39	1.37	0.13	0.03
Asturias	3.50	1.86	7.33	23.46		1.30	1.93	9.44	0.92	0.10	0.07
Ávila	6.09	2.19	3.64	41.31		3.11	1.14	4.02	0.56	0.15	0.11
Badajoz	3.01	14.89	3.07	25.45		1.28	1.30	5.01	0.46	0.19	0.32
Balears, Illes	6.70	0.65	2.40	22.82		0.77	1.72	6.70	0.55	0.07	0.07
Barcelona	6.50	1.18	2.50	14.74		1.34	1.45	7.72	1.02	0.13	0.60
Bizkaia	4.05	1.01	3.66	24.81		1.04	3.12	19.55	1.30	0.15	0.03
Burgos	4.45	1.25	6.52	22.46		1.16	1.77	9.98	0.95	0.26	0.25
Cáceres	2.54	15.62	4.68	24.57		1.09	2.12	11.09	0.89	0.25	0.06
Cádiz	1.73	4.71	1.18	19.55		0.77	1.06	3.54	0.51	0.93	0.13
Cantabria	3.31	0.93	4.07	22.14		0.88	4.55	12.13	2.75	0.09	0.02
Castellón/Castelló	21.86	0.75	0.81	25.90		1.12	4.52	4.49	1.74	0.04	-
Ciudad Real	7.80	3.43	3.33	25.14		3.67	1.04	5.88	0.81	0.27	0.13
Córdoba	5.41	2.33	1.48	16.22		1.76	0.61	2.82	0.30	0.23	0.07
Coruña, A	4.22	1.83	31.64	20.92		1.70	1.00	3.72	0.45	0.12	0.10
Cuenca	17.62	1.76	2.53	31.37		3.67	1.03	1.97	0.22	0.02	-
Gipuzkoa	5.16	1.82	4.57	20.22		1.07	4.69	16.59	1.96	0.15	0.06
Girona	2.77	0.35	0.82	5.19		0.26	0.99	2.39	0.29	0.03	0.08
Granada	5.98	1.48	1.34	15.23		2.75	0.40	1.51	0.34	0.56	0.66
Guadalajara	4.14	2.13	2.15	43.20		1.44	0.75	2.04	0.39	0.27	-
Huelva	0.80	9.24	1.35	13.78		0.53	0.48	2.31	0.26	0.13	0.04
Huesca	7.67	0.38	1.69	12.79		2.16	2.84	7.64	0.62	0.04	0.09
Jaén	6.55	1.16	1.12	17.57		2.87	0.62	2.77	0.24	0.80	0.39
León	3.43	1.31	9.87	19.58		1.29	2.29	7.01	1.30	0.08	0.01
Lleida	5.32	0.51	1.56	7.01		0.89	0.61	1.92	0.13	0.05	0.00
Lugo	3.75	1.75	31.34	18.07		1.58	1.91	4.84	0.91	0.08	0.02
Madrid	8.88	2.46	5.30	23.13		2.83	1.63	5.85	0.96	0.21	0.40
Málaga	1.62	3.05	0.82	12.90		0.80	0.54	1.52	0.23	0.44	0.53
Murcia	17.09	1.46	1.24	20.89		21.79	0.84	1.13	0.22	0.13	0.06
Navarra	7.50	0.86	2.34	20.31		1.08	6.07	15.37	1.60	0.03	0.10
Ourense	2.33	0.87	52.57	13.61		0.49	0.66	2.33	0.20	0.10	-
Palencia	3.21	3.51	5.74	22.76		1.89	2.02	8.37	1.27	-	-
Palmas, Las	1.27	0.25	2.78	29.97		0.20	0.74	5.38	0.16	0.03	0.47
Pontevedra	3.04	0.92	36.08	17.54		0.82	2.04	4.16	0.46	0.06	0.07
Rioja, La	8.56	0.61	2.70	14.30		1.91	2.50	19.11	3.19	0.18	0.04
Salamanca	4.15	3.18	5.95	22.28		0.95	1.50	8.76	0.56	0.44	0.62
S. C. Tenerife	1.48	1.36	1.87	33.28		0.40	0.47	4.19	0.19	0.25	0.04
Segovia	5.12	1.55	4.44	46.13		2.11	1.44	5.37	0.48	0.18	0.28
Sevilla	4.24	3.07	2.14	17.48		1.13	0.99	4.14	0.37	0.43	0.20
Soria	5.69	0.71	2.89	31.57		1.50	1.70	8.77	1.81	0.05	-
Tarragona	8.40	0.38	1.13	6.66		1.00	5.34	6.85	2.15	0.04	0.06
Teruel	26.55	1.40	0.86	11.43		3.07	1.19	4.47	1.46	0.08	0.04
Toledo	9.18	2.55	4.16	24.96		2.63	1.64	5.79	0.54	0.13	0.10
Valencia/València	22.48	0.79	1.84	30.43		2.00	1.17	2.29	0.74	0.13	0.21
Valladolid	6.05	1.64	6.67	23.85		1.73	1.71	6.31	0.85	0.16	0.18
Zamora	4.96	1.85	10.75	25.16		1.81	2.10	4.57	0.71	0.12	0.06
Zaragoza	7.53	2.23	2.88	18.36		1.16	2.00	6.43	0.89	0.35	0.07
Ceuta	3.00	0.43	0.21	26.86		0.75	-	0.54	-	10.36	0.75
Melilla	3.09	1.55	0.95	15.19		1.05	0.41	1.73	0.17	1.78	11.04

7. Percentage distribution of overnight stays in each province by Autonomous City and Community of origin

Results by provinces

(Continued)

Provinces	Total	Andalucía	Aragón	Asturias, P. de	Balears, Illes	Canarias	Cantabria	Castilla y León	Castilla-La Mancha	Cataluña
TOTAL	100	18.86	3.02	2.47	1.33	3.57	1.10	5.70	4.10	13.51
Albacete	100	10.61	0.76	0.95	0.33	0.18	0.32	2.79	26.63	5.77
Alicante/Alacant	100	6.67	1.85	1.93	0.28	0.41	1.12	8.76	10.09	3.54
Almería	100	45.75	0.71	1.22	0.18	0.12	0.43	3.03	5.12	4.28
Araba/Álava	100	8.90	3.47	2.10	1.02	1.81	1.72	6.54	2.71	16.45
Asturias	100	10.41	2.85	8.30	0.74	1.63	2.12	12.95	3.59	6.81
Ávila	100	11.26	1.37	2.26	0.77	1.54	0.71	11.53	3.79	3.62
Badajoz	100	22.24	1.88	2.94	0.32	1.12	0.98	5.99	5.00	4.72
Balears, Illes	100	10.08	1.95	3.27	10.65	0.42	2.16	3.58	1.00	23.49
Barcelona	100	9.51	2.65	1.26	2.02	2.57	0.97	2.50	1.79	41.00
Bizkaia	100	8.37	2.67	3.02	1.25	3.05	1.19	5.19	2.65	14.66
Burgos	100	9.29	3.00	2.96	0.70	1.08	2.96	17.06	3.72	12.39
Cáceres	100	13.37	1.24	3.18	0.26	1.01	1.11	5.23	3.38	6.60
Cádiz	100	42.13	1.07	2.19	0.43	0.71	0.94	4.98	3.07	3.07
Cantabria	100	7.55	4.90	3.46	0.51	1.75	3.18	15.16	4.73	6.36
Castellón/Castelló	100	1.74	7.71	1.09	0.12	0.10	0.66	8.21	7.08	9.32
Ciudad Real	100	16.70	1.21	1.52	0.54	0.63	0.84	3.17	15.93	7.81
Córdoba	100	48.01	2.18	2.22	0.35	0.92	0.53	2.40	4.29	8.89
Coruña, A	100	8.92	1.62	3.75	1.02	2.29	1.10	6.48	2.04	7.03
Cuenca	100	7.71	2.33	1.41	1.19	0.42	1.31	4.41	12.10	9.72
Gipuzkoa	100	7.21	4.98	3.22	0.63	2.09	1.24	5.28	2.86	18.24
Girona	100	3.64	2.52	0.61	0.48	0.32	0.34	1.64	0.48	74.76
Granada	100	57.51	0.85	0.75	0.69	0.62	0.33	1.76	2.74	4.75
Guadalajara	100	6.46	2.21	0.72	0.39	1.73	1.02	5.31	19.66	9.13
Huelva	100	53.14	0.68	1.26	0.06	0.37	0.42	7.54	2.70	1.40
Huesca	100	5.41	22.38	1.14	0.49	1.00	0.79	2.15	2.63	24.02
Jaén	100	53.30	0.53	1.12	0.29	0.63	0.37	2.20	3.54	4.09
León	100	4.73	1.70	15.70	0.47	0.70	2.69	23.76	1.83	6.05
Lleida	100	4.57	1.96	0.79	0.75	0.75	0.33	1.29	2.08	64.72
Lugo	100	6.21	1.18	5.04	0.37	0.88	1.44	6.11	1.81	8.71
Madrid	100	14.73	2.52	3.48	1.90	4.65	1.93	4.83	2.82	12.61
Málaga	100	61.50	1.11	1.16	0.88	0.74	0.51	2.76	3.52	2.65
Murcia	100	13.86	0.93	0.97	0.40	0.43	0.26	4.62	11.23	4.81
Navarra	100	8.46	5.00	1.50	0.55	1.34	1.23	3.98	2.64	18.54
Ourense	100	6.32	1.81	5.21	0.26	0.63	0.57	7.90	2.04	4.25
Palencia	100	5.50	3.42	5.42	0.51	0.84	3.26	19.32	5.54	6.82
Palmas, Las	100	7.69	0.74	2.12	1.19	31.89	0.68	2.07	0.69	6.84
Pontevedra	100	6.10	1.34	8.88	0.47	2.28	1.32	13.67	2.06	4.11
Rioja, La	100	6.82	5.38	3.31	0.92	1.91	2.58	6.90	2.21	15.43
Salamanca	100	14.95	1.36	13.31	0.57	2.18	2.05	14.53	2.20	4.93
S. C. Tenerife	100	13.11	0.94	2.36	0.33	25.02	1.24	2.70	1.33	3.72
Segovia	100	8.56	1.11	2.49	0.77	0.92	1.09	7.71	3.46	4.74
Sevilla	100	41.64	1.52	1.15	0.74	2.18	1.08	2.65	1.94	12.52
Soria	100	5.40	9.29	1.41	0.57	0.47	0.75	13.52	5.31	11.22
Tarragona	100	3.14	12.03	1.19	0.81	0.40	0.91	4.41	1.74	39.66
Teruel	100	5.11	22.96	0.74	0.36	0.96	0.60	1.51	3.20	18.26
Toledo	100	11.01	2.34	1.90	0.63	1.08	0.97	3.78	15.12	9.81
Valencia/València	100	6.42	3.02	0.96	0.93	1.24	0.52	6.19	10.42	7.07
Valladolid	100	8.63	1.97	4.40	1.06	1.51	2.43	16.61	3.88	11.27
Zamora	100	9.60	1.55	6.16	0.29	0.96	1.53	18.39	4.52	5.76
Zaragoza	100	7.48	18.45	1.40	0.85	2.61	1.25	5.24	2.60	18.96
Ceuta	100	52.53	0.10	0.83	0.42	2.22	0.31	0.31	1.30	1.46
Melilla	100	54.29	1.38	1.01	1.38	1.94	0.05	2.41	1.73	2.98

7. Percentage distribution of overnight stays in each province by Autonomous City and Community of origin

Results by provinces

(Conclusion)

Provincias	Comunitat Valenciana	Extremadura	Galicia	Madrid, de	C. Región de	Murcia, Foral de	Navarra, C. Foral de	País Vasco	Rioja, La	Ceuta	Melilla
TOTAL	6.98	2.12	3.86	23.04	1.75	1.94	5.52	0.78	0.16	0.19	
Albacete	22.65	1.23	1.66	17.59	5.85	0.69	1.67	0.23	0.06	0.02	
Alicante/Alacant	21.27	2.17	1.15	31.30	2.49	1.53	4.53	0.82	0.04	0.05	
Almería	6.92	0.98	0.68	22.19	6.21	0.78	0.94	0.14	0.15	0.19	
Araba/Álava	7.14	1.23	4.47	21.89	1.17	1.27	17.07	0.84	0.14	0.04	
Asturias	4.10	1.86	5.73	26.18	1.38	2.20	7.86	0.99	0.17	0.12	
Ávila	5.47	1.85	3.05	43.70	3.11	1.12	4.12	0.48	0.13	0.12	
Badajoz	3.36	16.04	4.17	22.98	1.15	1.17	4.94	0.40	0.22	0.38	
Balears, Illes	6.03	0.55	2.87	22.00	0.57	2.20	8.30	0.61	0.08	0.20	
Barcelona	5.93	1.25	2.74	13.67	1.20	1.38	7.86	1.11	0.11	0.48	
Bizkaia	4.32	0.97	3.77	24.61	1.53	2.94	18.72	0.91	0.13	0.05	
Burgos	4.42	1.48	6.99	20.72	1.15	1.26	9.73	0.72	0.18	0.21	
Cáceres	3.01	16.97	3.72	29.44	0.92	1.52	8.10	0.67	0.24	0.03	
Cádiz	1.44	4.33	1.12	26.98	0.60	1.04	4.55	0.62	0.63	0.09	
Cantabria	3.60	1.17	3.16	24.46	0.84	6.54	9.92	2.50	0.06	0.16	
Castellón/Castelló	15.68	0.63	0.83	34.08	0.61	4.77	5.29	2.07	0.02	-	
Ciudad Real	6.86	4.30	4.06	26.30	3.20	0.68	5.18	0.54	0.46	0.07	
Córdoba	5.80	2.29	1.54	15.46	1.61	0.59	2.45	0.27	0.14	0.05	
Coruña, A	3.84	2.18	25.74	26.70	1.48	1.02	4.15	0.41	0.15	0.09	
Cuenca	19.37	1.66	2.01	28.00	3.79	1.35	2.40	0.78	0.03	-	
Gipuzkoa	5.14	1.60	3.99	21.24	0.90	4.32	15.16	1.75	0.11	0.04	
Girona	2.52	0.39	0.91	6.22	0.20	1.11	3.45	0.33	0.02	0.05	
Granada	4.86	1.30	1.29	17.20	2.02	0.31	1.94	0.27	0.37	0.45	
Guadalajara	3.56	2.28	1.93	41.17	1.45	0.71	1.91	0.20	0.18	-	
Huelva	0.75	8.95	1.58	17.20	0.56	0.65	2.35	0.20	0.12	0.07	
Huesca	8.83	0.48	1.67	13.92	3.15	3.01	8.01	0.55	0.03	0.33	
Jaén	7.11	1.31	0.90	18.06	2.83	0.44	2.13	0.14	0.71	0.30	
León	3.84	1.25	9.05	18.31	0.90	1.82	5.98	1.14	0.07	0.01	
Lleida	6.38	0.52	1.52	10.69	0.93	0.63	1.94	0.08	0.04	0.02	
Lugo	3.31	1.36	32.18	22.93	1.27	1.79	4.77	0.57	0.05	0.01	
Madrid	8.44	2.63	5.83	22.35	2.57	1.69	5.48	0.88	0.23	0.43	
Málaga	1.31	3.90	0.95	14.68	0.65	0.78	2.02	0.21	0.28	0.38	
Murcia	11.94	2.06	1.53	28.58	15.81	0.70	1.44	0.20	0.08	0.16	
Navarra	9.26	0.64	1.91	19.09	1.29	7.27	15.79	1.32	0.04	0.13	
Ourense	2.73	1.92	48.33	14.16	0.47	0.63	2.38	0.27	0.11	-	
Palencia	2.94	2.84	6.47	23.41	2.97	1.57	8.16	1.00	-	-	
Palmas, Las	1.42	0.35	3.46	32.78	0.21	0.76	6.44	0.20	0.03	0.44	
Pontevedra	2.89	0.71	28.41	17.57	0.94	2.00	6.46	0.66	0.06	0.07	
Rioja, La	8.98	1.08	2.43	15.83	2.06	2.21	18.19	3.44	0.29	0.02	
Salamanca	4.92	3.12	4.88	19.67	0.90	1.22	7.83	0.47	0.32	0.59	
S. C. Tenerife	1.79	1.66	2.21	36.85	0.51	0.67	5.25	0.17	0.12	0.01	
Segovia	4.83	1.27	3.72	49.84	2.27	1.19	5.09	0.38	0.16	0.39	
Sevilla	4.70	2.92	2.15	16.80	1.07	1.15	4.77	0.47	0.36	0.17	
Soria	7.47	0.83	2.80	28.91	1.46	1.82	7.32	1.43	0.04	-	
Tarragona	5.65	0.41	1.19	7.34	0.71	8.24	9.10	2.94	0.02	0.12	
Teruel	24.83	1.08	0.63	11.39	2.56	0.78	3.71	1.25	0.04	0.02	
Toledo	9.20	2.30	5.64	25.13	2.64	1.62	6.12	0.48	0.13	0.11	
Valencia/València	15.69	1.19	1.81	38.74	1.21	1.30	2.52	0.56	0.07	0.12	
Valladolid	5.91	1.75	6.78	23.08	1.83	1.84	6.00	0.76	0.13	0.16	
Zamora	5.72	1.90	10.64	23.49	1.36	1.93	5.42	0.58	0.12	0.08	
Zaragoza	7.01	1.83	3.24	19.25	1.32	1.60	5.60	0.93	0.35	0.05	
Ceuta	2.93	0.42	0.77	26.53	0.89	-	0.57	-	7.77	0.63	
Melilla	2.52	2.38	1.58	12.08	1.31	0.55	1.31	0.05	2.06	9.00	

8. Travellers, overnight stays and average stay by country of residence

Results by countries

Countries	Number of travellers		Overnight stays	
	Total	%	Total	%
TOTAL	9,681,279	100.00	37,462,897	100.00
Residents in Spain	4,576,389	47.27	12,553,790	33.51
Residents abroad	5,104,890	52.73	24,909,106	66.49
Total Residents abroad	5,104,890	100.00	24,909,106	100.00
Total Residents in U.E. (without Spain)	3,707,197	72.62	19,875,980	79.79
- Germany	889,365	17.42	5,936,579	23.83
- Austria	49,073	0.96	265,756	1.07
- Belgium	177,116	3.47	943,088	3.79
- Denmark	70,088	1.37	394,001	1.58
- Finland	21,688	0.42	89,946	0.36
- France	473,274	9.27	1,459,407	5.86
- Greece	10,331	0.20	26,290	0.11
- Ireland	62,981	1.23	306,332	1.23
- Italy	279,521	5.48	1,084,777	4.35
- Luxembourg	7,830	0.15	43,492	0.17
- Netherlands	221,804	4.34	1,173,981	4.71
- Poland	76,756	1.50	421,177	1.69
- Portugal	116,792	2.29	354,249	1.42
- United Kingdom	1,064,961	20.86	6,503,668	26.11
- Czech Republic	30,256	0.59	180,103	0.72
- Sweden	81,562	1.60	411,474	1.65
- Rest of UE*	73,798	1.45	281,660	1.13
Norway	79,646	1.56	415,977	1.67
Russia	228,670	4.48	1,644,964	6.60
Switzerland	106,634	2.09	544,022	2.18
Rest of Europe	96,181	1.88	363,570	1.46
Japan	44,729	0.88	75,816	0.30
United States of America	262,253	5.14	584,833	2.35
Rest of America	284,184	5.57	646,302	2.59
African's countries	55,024	1.08	140,443	0.56
Rest of the world	240,372	4.71	617,199	2.48

*Countries included in the Rest of UE: Bulgaria, Cyprus, Slovakia, Slovenia, Estonia, Hungary, Latvia, Lithuania, Malta and Romania

Hotel Price Index (HPI). 2008 Base

July 2012

Provisional data

National General Index and breakdown by Autonomous Cities

	Index	Interannual variation rate
TOTAL	95.5	1.3
Andalucía	91.3	-1.7
Aragón	58.4	-4.7
Asturias, Principado de	88.2	-6.3
Balears, Illes	106.1	6.9
Canarias	98.0	2.3
Cantabria	90.6	-5.0
Castilla y León	91.5	-3.6
Castilla - La Mancha	89.6	-5.4
Cataluña	97.3	1.5
Comunitat Valenciana	92.9	0.2
Extremadura	90.1	-2.7
Galicia	91.9	-5.7
Madrid, Comunidad de	80.9	-4.6
Murcia, Región de	80.2	-5.0
Navarra, Comunidad Foral de	90.1	-4.3
País Vasco	95.3	0.2
Rioja, La	85.8	-4.4
Ceuta	121.6	-2.7
Melilla	91.9	-1.7

National General Index and breakdown by categories

	Index	Interannual variation rate
TOTAL	95.5	1.3
HOTELS: Gold stars		
Five	90.5	2.9
Fourth	93.5	0.6
Three	97.6	2.5
Two	99.5	0.4
One	102.7	-2.2
HOSTALS: Silver stars		
Three and two	101.5	2.3
One	94.7	-2.9

Indicators on the Profitability of the Hotel Sector

July 2012

Provisional data

ADR and RevPAR for Autonomous Cities and Communities and national indices

	ADR (in euros)	Variation Rate variation	RevPar (in euros)	Variation Rate variation
TOTAL	78.1	3.6	52.0	1.7
Andalucía	87.8	-0.6	53.7	-1.1
Aragón	52.4	-6.2	17.9	-12.6
Asturias, Principado de	61.0	-3.4	27.4	-17.2
Balears, Illes	82.3	11.5	74.9	13.6
Canarias	72.8	4.9	54.6	2.7
Cantabria	73.1	-5.3	37.0	-12.4
Castilla y León	54.1	-2.7	19.3	-12.7
Castilla - La Mancha	55.1	-4.3	15.5	-11.1
Cataluña	81.9	1.4	61.0	1.9
Comunitat Valenciana	75.6	2.8	51.3	-0.6
Extremadura	54.1	-4.0	17.4	-13.7
Galicia	57.1	-4.7	22.2	-18.5
Madrid, Comunidad de	75.1	-3.4	42.2	-9.7
Murcia, Región de	67.8	-4.4	31.5	-13.4
Navarra, Comunidad Foral de	78.7	1.0	34.5	-6.7
País Vasco	79.8	-0.7	56.0	2.4
Rioja, La	59.5	-4.6	25.6	-14.3
Ceuta	74.6	-4.7	39.6	-20.5
Melilla	66.7	1.4	35.7	-24.2

National ADR and RevPar and breakdown by categories

	ADR (in euros)	Variation Rate interannual	RevPar (in euros)	Variation Rate interannual
TOTAL	78.1	3.6	52.0	1.7
HOTELS: Gold stars				
Five	168.9	5.5	112.6	10.3
Four	87.0	1.6	65.5	0.6
Three	66.0	2.8	49.8	1.7
Two	60.6	6.2	31.8	1.7
One	51.7	-0.1	21.7	-7.8
GUESTHOUSES: Silver stars				
Three and two	50.0	0.7	18.7	-10.0
One	43.5	-0.3	15.3	-9.6