

Hotel Tourism Short-Term Trends (HOS/HPI/ADR/REVPAR)
August 2011. *Provisional data*

Overnight stays in hotel establishments increase 6.2%* in August, as compared with the same month in 2010

Hotels earn 59.4 euros per available room and invoice an average of 81.8 euros per occupied room

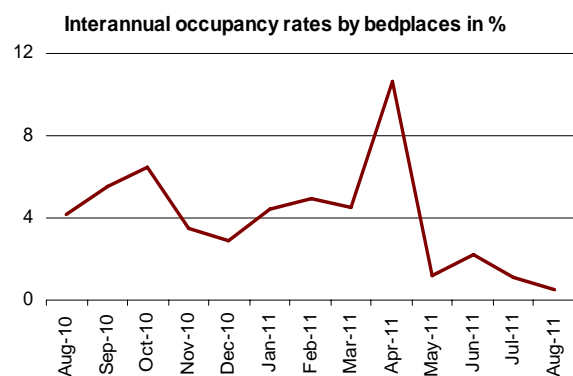
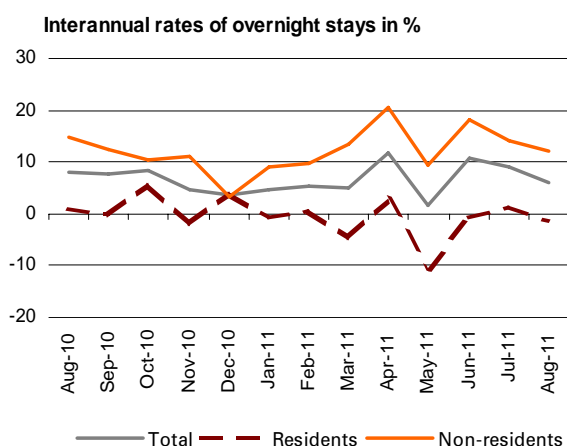
During the month of August, 41.5 million overnight stays were recorded in hotel establishments, indicating a 6.2% increase, as compared with the same month in 2010. Overnight stays by residents decreased 1.4%, while non-resident stays increased 12.2%. The average stay increased 0.5% standing at 3.9 nights per guest.

In the period comprised of July and August, overnight stays increased 7.5% as compared with the same period of 2010. Overnight stays by resident guests decreased 0.2%, while by non-residents increased 13.1%.

During the first eight months of the year, overnight stays increased 7.1%, as compared with the same period the previous year.

In turn, **the Hotel Price Index (HPI) registered a 1.8% increase**, this rate being 2.4 points higher than that registered in August 2010. Regarding the indicators on the profitability of the hotel sector, invoicing per occupied room reached an average value of 81.8 euros (1.8 euros more than one year ago), and income per available room stood at 59.4 euros (3.5 euros more).

72.3% of the available bed places were filled in August, indicating an 3.3% increase as compared with the same month the previous year. The weekend occupancy rate by bed places stood at 75.3%, with an increase of 2.7%.



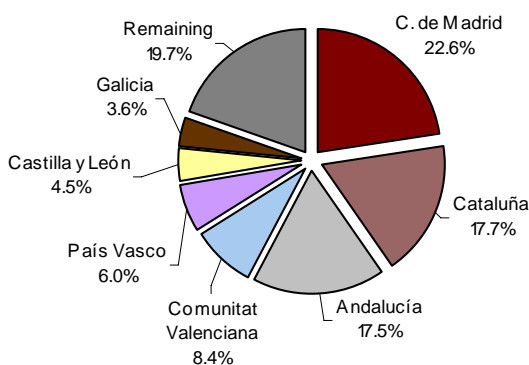
* Due to the update made in the in the directory of hotel establishments in Canarias, Comunidad Foral de Navarra and Extremadura, the data published for those Communities and the national total cannot be directly compared. To bridge this gap in the series, some linking coefficients have been calculated to allow users to compare data from different years. The coefficients are published monthly on the INE website in the section dedicated to this statistical operation, in a specific section entitled linking coefficients.

Overnight stays of guests resident abroad

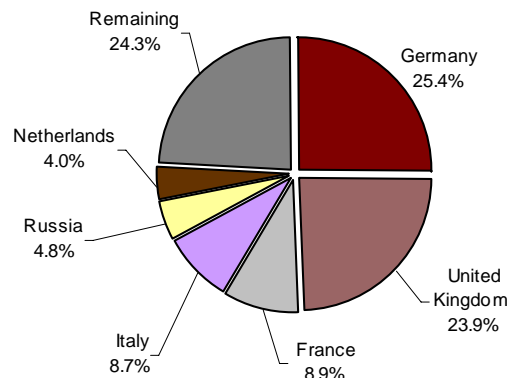
Guests from Germany and the United Kingdom made more than 11.9 million overnight stays in August. The German market experienced an interannual increase of 13.0%, while the British market grew 6.5%.

Overnight stays of guests from France, Italy, and Russia (the following countries of origin) presented interannual rates of 10.3%, 9.9% and 55.8% respectively.

Overnight stays of guests resident in Spain by Autonomous Community of origin in %



Overnight stays of guests resident abroad by country of origin in %

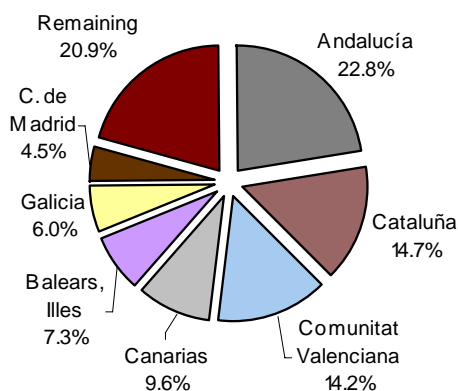


Main destinations

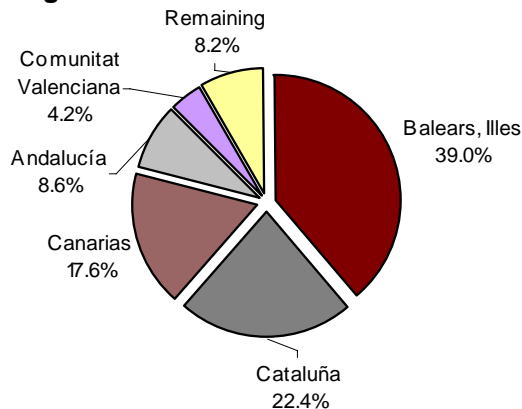
The main destination chosen by non-residents was Illes Balears. In this Autonomous Community, overnight stays by foreign nationals grew 10.9%. It was followed by Cataluña, with an interannual rate of 9.1%, and Canarias, with an increase of 19.7%.

Andalucía, Comunitat Valenciana and Cataluña were the main destinations of guests resident in Spain, with interannual rates for overnight stays of -4.3%, 2.3% and -0.8%, respectively.

Distribution of overnight stays of guests resident in Spain in %



Distribution of overnight stays of guests resident abroad in %



Results by Autonomous Community, tourist area and tourist site

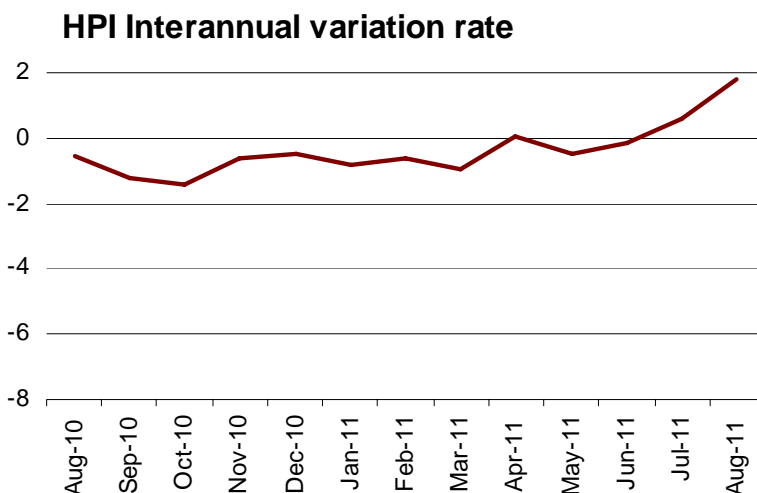
Illes Balears was the Autonomous Community with the highest occupancy rate by bed places during the month of August (92.9%). It was followed by Canarias (81.4%) and Cataluña (78.2%).

The tourist areas with the highest occupancy and overnight stay rates were located on the islands and the coasts. Mallorca recorded the highest occupancy rate by bedplaces (93.6%), the highest weekend occupancy rate by bed places (93.8%) and registered more than 7.8 million overnight stays in August.

The tourist sites with the highest number of overnight stays were Barcelona, Calviá and Madrid. Muro reached the highest occupancy rate by bed places (97.6%), and Santa Susanna registered the highest weekend occupancy (97.8%).

Evolution of the Hotel Price Index

The interannual rate of the HPI stood at 1.8% in August, this rate being 1.2 points higher than that obtained last month, and 2.4 points higher than that registered one year ago.



HPI by Autonomous Community

The four Autonomous Communities (Illes Balears, Cataluña, Andalucía and Canarias) that carried 73.7% of the total weight of the HPI in the month of August, showed uneven behaviour as compared with July 2011.

Illes Balears, which carried the greatest load in the weighting structure this month, presented an interannual rate of 4.9%, that is 4.1 points higher than that estimated in July. Hotel prices recorded a variation of 2.3% in Cataluña, as compared with the 2.5% recorded the previous month. Andalucía showed an interannual rate of -1.0%, as compared with the -0.3% observed last month. In Canarias, the variation was 2.7%, indicating 2.1 points more than in July.

HPI by category

Hotel prices decreased in August only in two-gold-star hotels (-0.2%).

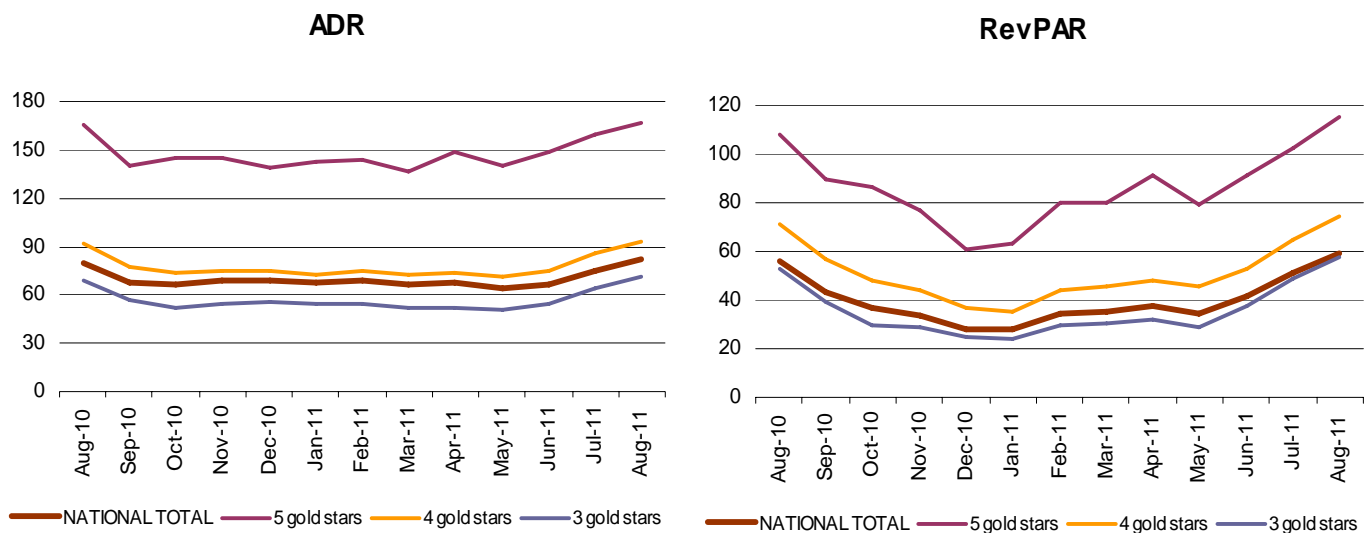
The HPI increased in one-gold-star hotels (3.1%), in one-silver-star hotels (2.6%), in three-gold-star hotels (2.3%), four-gold-star hotels (1.9%), three and two-silver-star (both with 1.8%), and five-gold-star hotels (1.0%).

Indicators on the Profitability of the Hotel Sector

The average invoicing by hotels per occupied room (ADR) in August was 81.8 euros, indicating an increase of 1.8 euros as compared with the same month in 2010.

In turn, income per available room (RevPAR), conditioned by the occupancy registered in the hotel establishments, reached 59.4 euros, with an increase of 3.5 euros.

By category, the average invoicing was 166.4 euros for five-star hotels, 93.6 euros for four-star hotels and 71.4 euros for three-star hotels. Income per available room for these same categories was 114.9, 74.8 and 57.6 euros, respectively.



For further information see INEbase-www.ine.es/en/welcome_en.htm All press releases at: www.ine.es/en/prensa/prensa_en.htm

Press Office: Telephone numbers: 91 583 93 63 / 94 08 – Fax: 91 583 90 87 - gprensa@ine.es

Information Area: Telephone number: 91 583 91 00 – Fax: 91 583 91 58 – www.ine.es/infoine/?L=1

Tourist Accommodation Occupancy Survey (Hotels and similar establishments)

August 2011

Provisional data

1. Travellers, overnight stays and average stay by categories of establishment

Category	Number of travellers			Number of overnight stays			Average stay
	Total	Residents in Spain	Residents abroad	Total	Residents in Spain	Residents abroad	
TOTAL	10,590,214	5,597,983	4,992,231	41,513,116	17,218,120	24,294,996	3.92
HOTELS: Golden stars							
Five	475,195	195,637	279,559	1,841,948	661,807	1,180,141	3.88
Four	4,276,190	2,258,725	2,017,465	17,286,933	7,391,844	9,895,089	4.04
Three	3,435,703	1,632,116	1,803,587	15,496,658	5,361,285	10,135,373	4.51
Two	945,363	572,236	373,127	2,894,991	1,525,494	1,369,498	3.06
One	356,043	224,145	131,898	1,044,311	566,425	477,885	2.93
INNS: Silver stars							
Two and three	623,647	411,322	212,325	1,686,853	961,866	724,987	2.70
One	478,072	303,802	174,270	1,261,421	749,399	512,023	2.64
Interannual rate	5.62	-0.21	13.02	6.15	-1.39	12.23	0.51
Cumulative interannual rate	4.89	-0.64	12.08	7.12	-1.56	13.68	2.12

2. Open establishments, capacity, occupancy and employed personnel by categories of establishment

Category	Estimated open establishments	Estimated bedplaces	Level of occupancy			Employed personnel
			Per bedplaces	Per bedplaces at weekend	Per rooms	
TOTAL	16,947	1,732,892	72.33	75.26	72.69	248,705
HOTELS: Golden stars						
Five	264	84,711	67.22	73.07	69.54	25,895
Four	2,163	660,348	78.73	81.29	80.04	108,495
Three	3,037	569,214	80.93	82.57	80.65	74,400
Two	2,180	147,302	60.99	66.28	62.21	15,037
One	1,433	63,526	51.60	56.55	53.05	6,085
INNS: Silver stars						
Two and three	3,474	113,105	47.25	51.84	48.68	10,613
One	4,397	94,685	42.07	45.82	44.77	8,180
Interannual rate	0.73	2.08	3.30	2.67	4.11	2.81

3. Travellers, overnight stays, occupancy, average stay and employed personnel

Results by areas and tourist sites

	Travellers		Overnight stays		Level of occupancy			Average stay	Employed personnel
	Residents in Spain	Residents abroad	Residents in Spain	Residents abroad	Per bedplac	Per bedplaces	Per rooms at weekend		
Tourist areas with a greater level of occupancy per month									
Isla de Mallorca	120,465	991,251	611,392	7,284,672	93.63	93.75	93.32	7.10	35,422
Isla de Menorca	49,234	71,766	344,717	597,671	91.39	89.44	94.50	7.79	4,110
Islas de Ibiza-Formentera	64,071	243,665	308,708	1,603,020	90.56	92.26	92.79	6.21	8,842
Isla de Lanzarote	62,230	66,164	390,077	581,327	90.42	84.98	86.35	7.57	5,439
Costa Barcelona-Maresme	41,632	125,535	178,181	925,185	90.03	90.59	88.53	6.60	3,512
Costa Daurada	207,342	181,151	825,065	1,080,702	88.04	85.83	88.01	4.91	7,370
Costa Blanca	279,011	128,231	1,275,797	704,179	87.07	90.47	84.29	4.86	9,627
Costa de Gipuzkoa	38,017	35,080	98,564	75,956	86.88	89.69	89.78	2.39	1,275

Tourist areas with a greater number of overnight stays per month *

Costa del Sol	274,163	193,233	1,108,121	1,049,236	80.19	85.90	81.88	4.62	13,740
Isla de Tenerife	121,537	172,615	625,121	1,525,130	79.57	82.85	80.75	7.31	14,594
Costa Brava	190,284	314,598	610,745	1,494,934	79.58	82.79	82.29	4.17	9,700
Barcelona	127,875	596,518	261,744	1,587,687	82.34	82.33	82.41	2.55	12,116
Isla de Gran Canaria	74,743	124,229	386,407	1,109,059	80.53	84.42	83.04	7.52	10,140
Isla de Fuerteventura	28,431	103,302	174,139	1,008,261	81.11	85.52	89.12	8.98	7,294
Costa de la Luz de Cádiz	188,676	67,562	703,721	293,936	76.62	79.79	79.36	3.89	6,718
Costa de Almería	145,471	20,731	696,688	113,604	69.75	72.97	80.03	4.88	3,735

Tourist sites with a greater level of occupancy per month

Muro	6,096	66,432	41,911	567,175	97.63	96.01	97.49	8.40	2,357
Alcúdia	4,847	77,757	29,472	648,105	96.51	96.32	93.81	8.20	2,478
Sant Josep De Sa Talaia	7,492	41,619	45,719	349,030	96.02	96.62	95.03	8.04	1,880
Son Servera	1,430	38,896	5,583	271,446	95.92	97.10	95.38	6.87	1,085
Yaiza	31,041	37,657	195,649	304,054	94.90	85.51	85.50	7.27	2,631
Santa Susanna	18,935	35,960	84,469	267,445	94.64	97.76	93.40	6.41	996
Salou	73,422	114,235	370,875	755,555	94.36	90.00	92.40	6.00	3,529
Benidorm	140,413	78,661	751,735	508,551	94.28	95.14	89.78	5.75	5,788
Capdepera	2,345	62,556	10,728	496,211	94.07	90.48	95.74	7.81	2,006
Ciutadella De Menorca	24,254	27,318	167,392	233,044	93.81	88.66	95.60	7.76	1,647

Tourist sites with a greater number of overnight stays per month *

Barcelona	117,507	580,955	233,727	1,541,117	82.51	82.30	82.35	2.54	11,808
Calvià	21,497	192,337	140,985	1,441,513	93.51	93.06	93.07	7.40	7,339
Madrid	299,806	355,329	533,127	820,760	54.99	61.09	61.19	2.07	11,791
Palma	52,040	201,583	179,292	1,063,025	88.41	93.03	93.63	4.90	6,493
San Bartolomé De Tirajana	46,714	91,361	267,542	838,850	84.46	87.83	87.46	8.01	7,605
Lloret De Mar	21,300	142,455	78,885	893,707	88.30	89.30	90.14	5.94	3,047
Adeje	31,435	79,963	177,519	741,036	87.34	88.42	87.88	8.25	6,468
Pájara	15,542	75,345	110,179	693,412	84.33	86.84	89.98	8.84	5,081
Sant Llorenç Des Cardassar	4,840	85,393	27,682	735,311	92.76	93.94	93.87	8.46	3,228
Torremolinos	73,844	40,032	297,124	269,764	84.24	88.73	83.95	4.98	2,988

* Not taken into account those included in the preceding table because they are in the bigger level of occupancy tables too.

4. Travellers, overnight stays and average stay

Results by Autonomous Cities and Communities and provinces

	Number of travellers			Overnight stays			Average stay
	Total	Residents in Spain	Residents abroad	Total	Residents in Spain	Residents abroad	
TOTAL	10,590,214	5,597,983	4,992,231	41,513,116	17,218,120	24,294,996	3.92
Andalucía	1,701,353	1,113,582	587,771	6,017,372	3,921,210	2,096,162	3.54
Almería	170,814	149,825	20,988	826,729	713,737	112,991	4.84
Cádiz	308,048	224,891	83,156	1,119,931	792,778	327,154	3.64
Córdoba	81,566	46,592	34,974	134,066	81,663	52,403	1.64
Granada	217,921	128,536	89,384	502,968	326,922	176,047	2.31
Huelva	161,755	138,607	23,148	737,566	609,291	128,275	4.56
Jaén	45,157	39,515	5,642	82,390	75,112	7,279	1.82
Málaga	513,495	302,124	211,370	2,253,068	1,175,403	1,077,665	4.39
Sevilla	202,598	83,491	119,107	360,654	146,304	214,350	1.78
Aragón	264,438	206,531	57,907	542,709	441,924	100,786	2.05
Huesca	102,747	82,261	20,486	268,819	224,383	44,436	2.62
Teruel	45,870	42,635	3,235	90,919	86,033	4,886	1.98
Zaragoza	115,821	81,635	34,186	182,971	131,507	51,464	1.58
Asturias, Principado de	239,414	207,935	31,480	588,092	525,139	62,953	2.46
Balears, Illes	1,540,453	233,770	1,306,683	10,750,181	1,264,817	9,485,363	6.98
Canarias	779,545	306,838	472,706	5,931,710	1,656,304	4,275,406	7.61
Palmas, Las	459,100	165,405	293,695	3,649,270	950,623	2,698,647	7.95
Santa Cruz de Tenerife	320,444	141,434	179,011	2,282,439	705,681	1,576,759	7.12
Cantabria	172,087	143,708	28,380	447,398	388,991	58,407	2.60
Castilla y León	538,816	406,960	131,856	916,626	727,393	189,232	1.70
Ávila	37,694	30,847	6,847	67,996	56,022	11,974	1.80
Burgos	103,658	62,531	41,127	163,156	111,863	51,293	1.57
León	93,534	77,024	16,510	156,324	130,716	25,608	1.67
Palencia	25,726	20,314	5,412	45,103	37,787	7,317	1.75
Salamanca	111,414	77,489	33,925	193,668	145,511	48,157	1.74
Segovia	47,980	37,405	10,575	86,337	67,135	19,201	1.80
Soria	24,916	23,089	1,827	48,505	45,995	2,511	1.95
Valladolid	60,302	47,976	12,326	103,266	85,007	18,259	1.71
Zamora	33,592	30,286	3,307	52,269	47,356	4,912	1.56
Castilla-La Mancha	195,386	161,643	33,744	355,823	303,675	52,148	1.82
Albacete	28,348	26,635	1,713	69,971	67,111	2,860	2.47
Ciudad Real	35,976	32,085	3,891	63,705	57,267	6,438	1.77
Cuenca	37,268	31,609	5,659	62,313	53,969	8,344	1.67
Guadalajara	21,490	18,231	3,259	39,606	34,302	5,303	1.84
Toledo	72,304	53,083	19,221	120,228	91,025	29,203	1.66
Cataluña	2,196,902	833,554	1,363,348	7,985,059	2,532,495	5,452,564	3.63
Barcelona	1,123,295	280,666	842,630	3,488,834	671,509	2,817,325	3.11
Girona	538,687	219,783	318,904	2,189,406	686,848	1,502,558	4.06
Lleida	108,439	94,366	14,073	273,374	244,529	28,845	2.52
Tarragona	426,480	238,739	187,740	2,033,445	929,609	1,103,836	4.77
Comunitat Valenciana	857,666	608,240	249,426	3,456,078	2,439,001	1,017,077	4.03
Alicante/Alacant	425,480	294,099	131,381	2,020,300	1,308,063	712,238	4.75
Castellón/Castelló	144,924	127,475	17,450	639,522	589,931	49,591	4.41
Valencia/València	287,262	186,666	100,595	796,256	541,007	255,249	2.77
Extremadura	153,160	121,433	31,727	256,002	212,170	43,832	1.67
Badajoz	81,272	61,094	20,178	125,617	99,240	26,377	1.55
Cáceres	71,889	60,339	11,549	130,385	112,929	17,455	1.81
Galicia	529,985	416,647	113,338	1,238,710	1,034,960	203,750	2.34
Coruña, A	226,352	163,246	63,106	473,437	366,494	106,943	2.09
Lugo	87,485	70,071	17,414	144,869	124,097	20,772	1.66
Ourense	35,889	32,352	3,537	67,253	60,655	6,597	1.87
Pontevedra	180,259	150,978	29,280	553,152	483,714	69,438	3.07
Madrid, Comunidad de	846,757	440,550	406,207	1,703,495	783,330	920,165	2.01
Murcia, Región de	109,287	91,548	17,739	359,058	309,379	49,679	3.29
Navarra, Comunidad Foral de	101,899	74,407	27,492	206,033	166,114	39,918	2.02
País Vasco	287,871	166,893	120,978	611,279	381,975	229,303	2.12
Araba/Álava	46,441	30,061	16,380	88,193	65,110	23,084	1.90
Bizkaia	130,331	74,565	55,766	278,427	169,716	108,710	2.14
Gipuzkoa	111,099	62,266	48,833	244,659	147,150	97,509	2.20
Rioja, La	62,798	54,038	8,760	116,240	102,959	13,281	1.85
Ceuta	7,930	5,773	2,157	16,329	12,443	3,886	2.06
Melilla	4,464	3,933	531	14,922	13,840	1,082	3.34

5. Establishment, capacity, occupancy and employed personnel

Results by Autonomous Cities and Communities and provinces

	Estimated open establishments	Estimated bedplaces	Level of occupancy			Employed personnel
			Per bedplaces	Per bedplaces at weekends	Per rooms	
TOTAL	16,947	1,732,892	72.33	75.26	72.69	248,705
Andalucía	2,580	280,716	66.28	70.13	67.35	41,311
Almería	200	38,335	66.85	70.93	77.18	4,152
Cádiz	491	48,191	72.35	75.83	74.16	7,823
Córdoba	186	10,200	41.65	43.72	42.77	1,282
Granada	431	30,335	52.63	57.25	51.26	3,884
Huelva	184	28,176	76.78	74.75	73.76	4,716
Jaén	181	9,133	28.88	33.81	28.97	1,245
Málaga	596	91,102	76.44	82.50	78.02	14,946
Sevilla	311	25,244	45.37	47.55	46.50	3,263
Aragón	871	42,137	40.74	45.47	41.38	4,854
Huesca	364	17,662	47.88	52.88	48.03	2,034
Teruel	225	7,232	39.56	48.43	42.11	884
Zaragoza	283	17,243	33.92	36.63	34.92	1,936
Asturias, Principado de	722	28,476	65.04	68.49	64.05	3,500
Balears, Illes	1,304	336,600	92.86	93.09	93.31	48,374
Canarias	507	222,053	81.44	83.87	83.22	38,456
Palmas, Las	255	133,979	83.14	84.92	85.80	22,873
Santa Cruz de Tenerife	252	88,074	78.86	82.26	79.38	15,584
Cantabria	507	22,534	62.70	68.29	62.03	3,358
Castilla y León	1,428	61,931	47.12	53.36	47.67	8,379
Ávila	107	4,984	43.31	57.30	46.65	672
Burgos	210	9,187	56.49	59.19	53.91	1,082
León	305	11,533	43.36	49.38	43.40	1,335
Palencia	98	3,407	42.05	44.75	45.35	381
Salamanca	215	11,476	53.57	58.81	52.38	1,635
Segovia	137	5,954	45.92	55.16	47.83	837
Soria	120	3,903	39.79	43.00	40.51	538
Valladolid	139	7,876	41.94	50.07	45.60	1,260
Zamora	95	3,612	46.09	52.05	46.38	639
Castilla-La Mancha	829	34,511	32.73	38.13	34.40	4,034
Albacete	175	7,287	30.81	37.00	34.08	911
Ciudad Real	190	7,604	26.74	30.65	28.62	915
Cuenca	168	5,833	34.10	39.11	35.74	663
Guadalajara	127	4,625	27.51	31.53	28.69	415
Toledo	170	9,162	40.99	47.95	41.50	1,130
Cataluña	2,569	304,882	78.19	79.10	78.31	40,150
Barcelona	1,057	135,245	79.06	79.58	78.66	19,453
Girona	806	83,789	77.45	80.79	79.91	10,488
Lleida	365	18,820	46.21	49.29	44.55	2,130
Tarragona	341	67,027	86.32	84.39	85.73	8,079
Comunitat Valenciana	1,098	133,521	76.67	80.65	74.77	18,489
Alicante/Alacant	489	70,712	83.88	87.61	80.77	10,040
Castellón/Castelló	241	25,189	73.49	77.59	72.39	3,441
Valencia/València	369	37,619	65.25	69.62	64.96	5,008
Extremadura	443	20,398	40.00	46.82	40.27	2,900
Badajoz	211	9,926	40.32	48.58	43.42	1,381
Cáceres	233	10,472	39.71	45.16	37.28	1,519
Galicia	1,801	73,600	53.34	59.71	54.46	9,582
Coruña, A	652	26,565	56.25	63.01	58.18	3,044
Lugo	334	10,246	45.18	48.57	45.12	1,266
Ourense	198	6,396	33.54	39.29	36.46	802
Pontevedra	618	30,393	57.71	64.88	58.18	4,470
Madrid, Comunidad de	1,063	103,148	52.41	58.79	57.95	14,698
Murcia, Región de	202	19,897	54.94	57.16	54.03	3,047
Navarra, Comunidad Foral de	322	13,078	50.34	55.60	53.25	1,792
País Vasco	526	27,253	70.37	74.88	73.66	4,551
Araba/Álava	78	4,462	61.34	68.94	65.96	655
Bizcaia	213	13,073	67.54	71.87	69.95	2,100
Gipuzkoa	236	9,718	78.33	81.66	81.92	1,796
Rioja, La	151	6,455	57.27	67.87	58.13	920
Ceuta	13	851	61.89	60.99	56.38	151
Melilla	11	851	56.53	67.82	69.71	159

HOS (TABLES ANNEX) - AUGUST 2011 (4/9)

Provisional data

6. Percentage distribution of Spanish travellers in each province by Autonomous City and Community of origin

Results by provinces

(Continued)

Provincias	Total	Andalucía	Aragón	Asturias, P. de	Balears, Illes	Canarias	Cantabria	Castilla y León	Castilla-La Mancha	Cataluña
TOTAL	100	17.39	2.91	2.28	1.17	2.89	1.22	4.67	3.51	18.54
Albacete	100	6.59	0.99	1.03	0.80	0.79	2.40	3.98	20.87	8.88
Alicante/Alacant	100	5.58	1.55	1.27	0.36	0.52	0.89	4.32	9.80	6.54
Almería	100	47.94	1.15	0.44	0.18	0.18	0.14	2.12	3.97	6.39
Araba/Álava	100	11.50	2.75	1.40	0.39	0.97	1.49	4.45	3.73	22.79
Asturias	100	8.77	1.93	7.93	0.91	2.22	2.68	10.14	3.30	10.89
Ávila	100	17.22	0.67	1.82	0.35	0.73	1.63	8.96	3.99	6.40
Badajoz	100	21.88	1.25	3.02	0.63	0.90	1.35	5.20	3.28	6.52
Balears, Illes	100	13.06	1.09	1.83	10.27	0.63	0.77	1.62	1.74	25.73
Barcelona	100	6.96	3.29	1.43	2.20	2.62	1.33	2.31	2.10	41.51
Bizkaia	100	9.92	2.30	2.60	1.17	1.79	1.58	4.67	2.06	21.62
Burgos	100	8.36	2.91	1.99	0.48	1.09	2.66	13.47	2.68	19.01
Cáceres	100	17.58	2.29	3.49	0.36	0.88	1.89	5.21	3.76	7.46
Cádiz	100	45.51	1.08	1.12	0.51	0.91	0.75	3.47	2.88	6.92
Cantabria	100	5.72	3.67	3.88	0.68	1.56	2.96	15.13	4.23	11.40
Castellón/Castelló	100	2.54	8.15	0.90	0.17	0.35	0.37	4.94	6.05	17.95
Ciudad Real	100	18.06	1.71	1.95	0.66	0.50	0.83	2.18	14.80	12.11
Córdoba	100	39.99	2.74	1.06	0.45	0.54	0.60	4.01	2.88	15.34
Coruña, A	100	10.88	2.19	3.63	0.90	1.50	1.64	6.23	2.44	12.27
Cuenca	100	11.83	2.52	1.42	1.19	0.45	0.90	3.71	8.87	14.63
Gipuzkoa	100	5.35	4.48	1.98	0.77	1.05	1.33	5.41	2.57	25.34
Girona	100	3.33	2.49	0.50	0.71	0.46	0.32	1.27	0.54	74.16
Granada	100	47.42	1.25	0.83	0.58	0.57	0.39	2.12	2.19	12.12
Guadalajara	100	8.50	2.31	0.92	0.36	0.45	0.60	4.06	19.21	9.90
Huelva	100	49.87	0.63	0.83	0.21	1.12	0.58	4.95	2.63	3.46
Huesca	100	6.08	17.68	0.52	0.85	0.48	0.66	1.95	1.76	30.45
Jaén	100	46.26	1.17	0.92	0.85	0.52	0.38	1.33	2.43	12.32
León	100	6.60	2.44	12.05	0.58	0.72	3.13	13.08	2.40	11.50
Lleida	100	3.04	1.48	0.41	0.41	0.75	0.40	0.88	0.69	75.81
Lugo	100	8.17	1.46	5.30	0.45	1.08	1.42	5.56	2.59	12.16
Madrid	100	17.06	2.33	3.37	1.77	3.04	2.67	4.27	3.27	12.51
Málaga	100	56.97	0.66	0.61	0.48	0.92	0.35	2.16	3.32	4.85
Murcia	100	13.76	0.85	0.79	0.39	0.48	0.33	3.01	7.34	9.54
Navarra	100	5.57	3.88	1.80	0.84	1.07	1.51	4.18	2.19	26.51
Ourense	100	4.62	0.85	3.07	0.55	0.61	0.55	4.55	1.33	9.74
Palencia	100	6.83	1.56	5.74	0.20	1.08	6.38	17.58	5.03	9.05
Palmas, Las	100	12.07	0.65	2.11	0.33	33.36	0.36	1.13	0.56	8.40
Pontevedra	100	7.04	0.92	6.93	0.47	1.59	1.71	10.12	1.93	8.43
Rioja, La	100	6.95	3.81	2.16	0.90	1.14	2.50	3.62	1.98	30.91
Salamanca	100	16.22	1.33	5.55	1.02	1.02	1.96	12.63	2.52	7.90
S. C. Tenerife	100	15.71	0.59	1.05	0.23	32.21	0.65	1.74	0.67	4.29
Segovia	100	12.33	5.65	2.96	0.89	0.72	1.94	8.75	3.43	8.88
Sevilla	100	42.98	1.59	1.10	1.08	1.60	0.86	2.94	1.82	13.32
Soria	100	6.27	4.76	2.25	0.61	0.55	2.01	9.30	3.97	20.29
Tarragona	100	2.40	10.90	1.02	0.58	0.34	0.69	2.30	1.59	46.03
Teruel	100	5.20	11.18	0.51	0.44	0.36	1.00	1.52	2.92	22.50
Toledo	100	14.25	1.99	2.02	1.27	0.79	1.04	3.07	12.89	12.93
Valencia/València	100	8.50	3.52	1.05	1.11	0.85	0.60	4.02	7.45	11.20
Valladolid	100	12.82	2.01	2.92	0.59	0.60	1.79	19.01	3.00	8.64
Zamora	100	13.47	1.22	5.09	0.49	0.91	1.70	13.11	3.28	8.28
Zaragoza	100	7.35	14.75	1.59	0.58	0.92	1.23	4.45	3.05	24.04
Ceuta	100	52.87	0.89	0.90	1.23	0.75	2.13	1.35	1.34	2.01
Melilla	100	61.00	1.39	0.26	0.00	1.81	0.46	1.21	1.89	3.58

6. Percentage distribution of Spanish travellers in each province by Autonomous City and Community of origin

Results by provinces

(Conclusion)

Provinces	Comunitat Valenciana	Extremadura	Galicia	Madrid, C. de	Murcia, Región de	Navarra, C. Foral de	País Vasco	Rioja, La	Ceuta	Melilla
TOTAL	9.15	2.00	4.50	19.18	2.38	1.34	5.69	0.79	0.20	0.19
Albacete	23.80	1.88	1.42	15.57	7.40	0.76	2.35	0.25	0.07	0.18
Alicante/Alacant	29.54	1.68	0.84	28.46	4.05	0.70	2.90	0.76	0.10	0.16
Almería	8.16	1.29	0.69	16.00	8.91	0.48	1.50	0.21	0.12	0.14
Araba/Álava	8.25	1.94	4.15	15.98	1.86	1.82	14.97	1.40	0.05	0.10
Asturias	5.89	1.85	6.92	24.60	1.46	1.35	7.72	1.25	0.07	0.10
Ávila	13.10	2.10	3.23	31.05	3.35	0.45	4.43	0.45	0.08	-
Badajoz	3.71	12.70	4.60	23.43	1.70	0.94	7.76	0.68	0.27	0.17
Balears, Illes	7.39	0.46	4.47	22.48	0.75	0.71	5.92	0.36	0.06	0.65
Barcelona	7.23	1.02	2.33	14.51	1.69	1.49	6.69	0.91	0.14	0.26
Bizkaia	6.10	0.67	3.43	17.67	1.66	2.62	18.61	1.43	0.06	0.03
Burgos	6.82	1.00	5.99	18.77	2.16	1.82	9.59	1.20	0.01	0.02
Cáceres	3.57	12.75	3.68	22.33	1.62	0.96	11.35	0.57	0.21	0.03
Cádiz	2.36	4.37	1.57	21.41	1.25	0.68	3.74	0.42	0.78	0.23
Cantabria	4.37	1.42	4.27	23.37	1.14	3.69	9.78	2.63	0.08	0.04
Castellón/Castelló	23.62	0.71	0.69	24.21	1.41	1.86	4.94	1.09	0.04	0.01
Ciudad Real	12.75	1.96	1.65	18.77	3.47	1.30	6.91	0.34	0.05	-
Córdoba	6.70	2.08	1.10	16.31	1.89	0.41	3.43	0.29	0.19	-
Coruña, A	6.48	1.25	22.35	20.54	1.83	1.00	4.31	0.47	0.07	0.04
Cuenca	19.82	1.65	2.92	21.51	4.39	0.81	3.03	0.17	0.13	0.03
Gipuzkoa	5.74	0.95	4.16	18.29	1.36	4.79	14.89	1.49	0.03	0.01
Girona	3.96	0.75	0.72	5.30	0.50	0.82	3.62	0.52	0.00	0.00
Granada	7.24	0.93	1.53	14.71	3.67	0.66	2.79	0.43	0.34	0.22
Guadalajara	8.70	1.10	1.78	33.89	2.26	1.53	3.99	0.40	0.05	-
Huelva	1.26	11.68	1.26	16.69	0.75	0.40	3.20	0.22	0.19	0.06
Huesca	13.15	0.73	1.03	12.70	1.25	2.90	6.88	0.74	0.09	0.11
Jaén	7.80	0.66	1.21	13.84	4.18	0.70	4.81	0.12	0.27	0.22
León	6.36	1.32	9.92	18.33	1.45	1.25	7.62	1.10	0.10	0.07
Lleida	6.26	0.22	1.09	4.76	0.80	0.50	2.14	0.24	0.03	0.08
Lugo	5.69	1.03	26.32	19.68	1.85	0.80	5.56	0.68	0.16	0.03
Madrid	11.27	2.28	4.93	17.91	3.28	1.99	6.15	1.11	0.34	0.45
Málaga	5.61	3.48	0.72	14.86	1.44	0.41	1.69	0.19	0.49	0.80
Murcia	18.14	0.62	1.39	21.21	19.80	0.31	1.59	0.27	0.14	0.05
Navarra	10.73	0.74	2.95	16.02	1.93	5.54	13.00	1.44	0.06	0.01
Ourense	3.37	0.48	47.19	15.86	1.05	0.36	5.39	0.36	0.05	-
Palencia	5.05	1.54	6.57	16.89	1.69	1.70	11.91	1.03	0.15	-
Palmas, Las	1.63	0.33	2.82	28.56	0.47	0.23	6.64	0.15	0.19	0.00
Pontevedra	4.40	1.22	27.02	19.19	1.22	1.57	5.46	0.60	0.08	0.11
Rioja, La	10.48	0.81	3.12	11.73	2.22	1.87	13.11	2.62	0.04	0.02
Salamanca	6.71	2.72	5.74	19.22	2.10	1.88	10.03	1.09	0.29	0.05
S. C. Tenerife	2.12	0.42	1.27	34.58	0.30	0.42	3.53	0.19	0.03	0.00
Segovia	13.23	1.64	4.29	21.86	5.64	0.97	6.23	0.36	0.17	0.09
Sevilla	4.92	3.06	2.20	15.30	1.40	0.77	3.80	0.33	0.84	0.08
Soria	10.89	0.95	3.13	22.39	2.17	2.02	7.23	1.09	0.13	-
Tarragona	9.10	0.54	1.05	8.00	1.29	3.86	8.07	2.10	0.00	0.12
Teruel	31.19	0.52	0.82	11.19	3.51	1.02	5.30	0.78	0.02	0.02
Toledo	12.11	1.95	2.78	20.55	2.71	0.98	8.13	0.44	0.06	0.05
Valencia/València	16.96	1.53	1.85	33.17	2.95	0.64	3.30	0.77	0.29	0.25
Valladolid	8.87	1.77	6.73	20.69	1.91	1.08	6.22	1.01	0.23	0.11
Zamora	6.28	2.52	8.12	24.22	2.44	0.85	7.32	0.63	0.06	-
Zaragoza	12.27	1.42	2.76	15.47	2.06	1.57	5.03	0.85	0.42	0.19
Ceuta	0.89	0.86	0.78	25.42	0.53	-	0.45	-	7.60	-
Melilla	8.84	0.27	1.82	6.86	0.60	0.46	1.29	0.11	0.52	7.65

7. Percentage distribution of overnight stays in each province by Autonomous City and Community of origin

Results by provinces

(Continued)

Provinces	Total	Andalucía	Aragón	Asturias, P. de	Balears, Illes	Canarias	Cantabria	Castilla y León	Castilla-La Mancha	Cataluña
TOTAL	100	17.51	2.70	2.04	1.10	3.25	0.96	4.47	3.50	17.69
Albacete	100	6.06	0.59	0.85	0.88	0.63	3.32	2.65	24.47	10.50
Alicante/Alacant	100	5.86	1.66	1.88	0.19	0.47	0.88	5.88	8.69	4.69
Almería	100	49.07	1.12	0.52	0.17	0.14	0.16	2.00	3.91	6.46
Araba/Álava	100	11.30	2.43	1.23	0.34	0.91	1.23	5.33	3.49	22.78
Asturias	100	9.96	2.26	5.82	0.87	2.42	1.93	8.75	3.72	12.12
Ávila	100	15.48	0.57	1.43	0.40	0.60	1.45	7.36	4.18	6.29
Badajoz	100	22.50	1.25	2.36	0.86	0.73	1.15	4.68	3.69	8.83
Balears, Illes	100	12.84	1.24	2.29	7.60	0.49	0.95	2.01	1.38	26.52
Barcelona	100	7.17	2.69	1.27	1.48	2.38	1.18	2.79	1.77	46.43
Bizkaia	100	11.08	2.23	2.14	1.14	2.31	1.43	4.59	1.91	21.22
Burgos	100	8.98	2.67	1.79	0.50	1.00	2.61	15.61	2.73	16.52
Cáceres	100	16.52	1.87	2.81	0.35	0.85	1.30	4.88	3.30	10.01
Cádiz	100	40.13	1.26	1.50	0.38	0.82	0.69	4.07	2.90	5.77
Cantabria	100	5.82	4.54	2.64	0.53	1.73	1.88	13.62	4.82	11.26
Castellón/Castelló	100	1.67	7.11	0.71	0.10	0.15	0.34	5.77	5.69	14.33
Ciudad Real	100	18.18	1.46	1.68	0.48	0.38	0.66	1.59	16.62	10.71
Córdoba	100	40.38	2.93	1.10	0.56	0.63	0.58	3.22	2.58	17.57
Coruña, A	100	10.96	1.85	3.23	0.86	1.58	1.37	6.34	2.76	12.46
Cuenca	100	10.82	2.29	0.98	1.47	0.58	0.64	3.21	10.58	14.30
Gipuzkoa	100	5.60	4.94	1.46	1.03	1.19	1.15	4.95	2.87	25.35
Girona	100	2.44	2.82	0.55	0.47	0.31	0.37	2.00	0.68	70.88
Granada	100	45.59	1.18	0.83	0.50	0.47	0.31	2.29	1.94	13.09
Guadalajara	100	7.34	1.65	0.97	0.36	0.68	1.40	4.50	19.67	8.65
Huelva	100	43.43	0.84	1.11	0.38	0.58	0.69	6.07	2.60	3.16
Huesca	100	5.44	15.48	0.33	0.71	0.46	0.53	1.63	1.63	29.84
Jaén	100	46.61	1.07	0.70	0.80	0.74	0.21	1.07	1.79	12.93
León	100	6.44	2.19	14.14	0.57	0.56	2.65	16.99	2.08	9.70
Lleida	100	5.00	1.06	0.20	0.45	0.99	0.57	0.78	0.67	72.71
Lugo	100	6.44	1.31	5.57	0.49	0.74	1.13	6.32	2.52	11.47
Madrid	100	16.96	2.28	3.00	2.20	3.06	2.39	4.14	3.16	14.82
Málaga	100	54.28	0.72	0.76	0.38	0.83	0.37	2.18	3.57	4.25
Murcia	100	12.63	1.01	0.96	0.25	0.46	0.28	3.83	8.64	7.92
Navarra	100	5.45	4.36	1.31	0.94	1.34	1.11	3.51	2.11	24.94
Ourense	100	4.80	0.91	3.06	0.43	0.69	0.46	4.53	1.06	10.58
Palencia	100	5.67	1.11	6.22	0.50	0.72	5.25	18.29	4.44	9.67
Palmas, Las	100	11.56	0.68	1.98	0.23	26.65	0.34	1.32	0.64	9.73
Pontevedra	100	6.10	0.93	7.87	0.41	1.69	2.09	10.46	2.50	7.73
Rioja, La	100	8.66	3.81	2.23	0.99	1.43	2.03	3.49	2.07	24.98
Salamanca	100	12.97	1.21	11.42	1.06	1.10	1.73	12.54	2.86	8.30
S. C. Tenerife	100	14.34	0.78	1.45	0.20	22.18	1.06	2.02	0.85	5.48
Segovia	100	10.42	4.48	2.75	0.92	0.61	1.75	9.07	3.05	9.68
Sevilla	100	40.29	1.94	1.04	0.77	2.00	0.82	3.05	1.93	16.64
Soria	100	6.37	4.30	1.77	0.44	0.38	1.80	10.04	4.47	18.23
Tarragona	100	2.36	10.39	1.09	0.34	0.29	0.75	2.86	1.82	43.31
Teruel	100	4.67	12.23	0.94	0.34	0.24	0.63	1.57	2.51	22.65
Toledo	100	12.98	1.78	1.88	2.85	0.83	0.95	2.86	10.85	14.52
Valencia/València	100	6.69	3.56	1.17	0.68	0.65	0.64	6.09	9.26	7.91
Valladolid	100	11.39	2.27	2.95	0.81	0.91	1.69	18.76	2.94	10.32
Zamora	100	12.16	1.28	5.63	0.45	0.91	1.61	14.52	3.08	7.88
Zaragoza	100	7.59	14.85	1.61	0.58	1.23	1.21	4.59	3.05	22.82
Ceuta	100	58.43	0.35	2.27	1.75	1.02	1.40	1.14	1.53	2.70
Melilla	100	66.71	1.22	0.15	0.09	1.01	0.49	0.71	1.31	4.98

7. Percentage distribution of overnight stays in each province by Autonomous City and Community of origin

Results by provinces

(Conclusion)

Provinces	Comunitat Valenciana	Extremadura	Galicia	Madrid, C. de	Murcia, Región de	Navarra, C. Foral de	País Vasco	Rioja, La	Ceuta	Melilla
TOTAL	8.38	1.89	3.60	22.62	1.94	1.35	5.96	0.76	0.14	0.14
Albacete	24.42	1.12	1.13	13.65	7.36	0.51	1.50	0.14	0.03	0.18
Alicante/Alacant	25.36	1.75	1.02	32.07	3.30	1.24	4.16	0.73	0.06	0.10
Almería	6.68	0.95	0.69	18.45	6.71	0.45	2.19	0.18	0.08	0.08
Araba/Álava	9.00	1.17	3.93	14.67	1.69	1.79	17.01	1.60	0.02	0.07
Asturias	6.16	1.80	4.79	28.27	1.70	1.28	6.91	1.09	0.09	0.05
Ávila	13.46	1.84	3.00	36.05	2.91	0.33	4.23	0.39	0.04	-
Badajoz	3.68	13.40	3.70	21.95	1.74	0.71	7.84	0.63	0.20	0.11
Balears, Illes	6.26	0.44	5.44	22.96	0.63	0.82	7.23	0.36	0.06	0.47
Barcelona	5.83	1.25	2.34	13.22	1.12	1.34	6.58	0.85	0.11	0.19
Bizkaia	7.33	0.83	3.40	18.28	2.35	1.99	16.75	0.91	0.07	0.04
Burgos	7.58	1.19	5.15	18.70	1.96	1.40	10.47	1.12	0.02	0.01
Cáceres	4.13	17.70	2.77	21.05	1.54	0.75	9.50	0.47	0.19	0.02
Cádiz	1.83	3.66	1.42	28.18	0.93	0.80	4.68	0.48	0.38	0.11
Cantabria	4.35	1.19	3.35	28.60	1.18	3.68	8.38	2.34	0.06	0.03
Castellón/Castelló	20.86	0.59	0.58	32.08	1.03	1.78	5.78	1.41	0.02	0.01
Ciudad Real	13.33	1.54	1.60	20.35	4.12	1.10	5.86	0.30	0.03	-
Córdoba	7.39	1.57	1.21	14.29	2.00	0.29	3.24	0.26	0.18	-
Coruña, A	6.91	1.23	19.97	22.60	1.82	0.92	4.58	0.45	0.06	0.04
Cuenca	19.31	1.64	2.55	23.27	4.27	0.57	2.76	0.61	0.14	0.02
Guipúzcoa	5.96	0.89	2.61	21.86	1.32	4.43	13.02	1.28	0.08	0.01
Girona	3.78	0.73	1.00	6.47	0.51	1.10	5.01	0.81	0.05	0.02
Granada	6.98	1.19	1.33	16.97	2.91	0.60	2.86	0.47	0.31	0.17
Guadalajara	10.11	1.41	2.52	32.71	2.35	1.10	4.24	0.32	0.03	-
Huelva	1.19	9.04	1.36	22.92	0.64	0.52	4.87	0.31	0.19	0.11
Huesca	14.56	0.67	0.77	16.96	1.30	2.20	6.75	0.61	0.04	0.07
Jaén	10.11	0.91	1.45	11.40	5.37	0.60	3.64	0.12	0.33	0.18
León	7.03	1.33	8.41	17.33	1.51	1.20	6.81	0.89	0.08	0.08
Lleida	8.38	0.16	1.06	4.56	0.69	0.39	2.04	0.20	0.01	0.08
Lugo	4.68	0.87	26.48	22.63	1.50	0.72	6.29	0.73	0.09	0.02
Madrid	10.18	2.37	5.02	17.65	3.19	2.15	5.94	0.85	0.29	0.36
Málaga	6.15	4.36	0.64	16.95	0.90	0.41	2.28	0.25	0.32	0.43
Murcia	13.30	0.65	1.68	31.12	14.48	0.35	1.98	0.30	0.13	0.03
Navarra	12.05	0.57	3.11	15.81	1.81	5.97	14.38	1.13	0.07	0.02
Ourense	3.89	0.48	45.61	16.66	0.94	0.38	5.21	0.27	0.04	-
Palencia	6.35	1.40	7.79	16.84	1.97	1.71	11.36	0.64	0.08	-
Palmas, Las	1.70	0.32	2.72	33.28	0.25	0.28	8.00	0.21	0.09	0.03
Pontevedra	4.15	1.55	22.23	21.98	1.13	1.65	6.65	0.66	0.06	0.14
Rioja, La	11.84	0.86	2.55	12.23	2.77	1.67	15.67	2.70	0.02	0.01
Salamanca	7.74	2.33	5.38	18.45	2.08	1.45	8.32	0.85	0.19	0.03
S. C. Tenerife	2.55	0.44	1.91	39.05	0.39	0.63	6.08	0.33	0.18	0.06
Segovia	12.86	2.47	3.82	25.34	5.72	0.82	5.76	0.27	0.13	0.06
Sevilla	4.87	2.68	2.22	14.80	1.10	0.75	3.83	0.52	0.69	0.07
Soria	12.72	0.84	2.77	22.19	2.33	2.07	8.21	0.91	0.16	-
Tarragona	6.61	0.58	1.12	8.75	1.04	5.23	10.69	2.70	0.01	0.05
Teruel	33.62	0.32	0.93	9.98	3.00	1.24	4.08	1.02	0.01	0.02
Toledo	13.64	1.59	2.66	20.67	2.84	0.98	7.65	0.33	0.11	0.05
Valencia/València	10.72	1.78	2.11	40.86	1.85	1.00	3.71	1.02	0.14	0.16
Valladolid	9.37	2.00	7.11	19.18	1.59	0.91	6.18	1.33	0.20	0.08
Zamora	6.73	2.37	7.36	24.20	2.51	0.76	7.99	0.45	0.12	-
Zaragoza	12.41	1.21	2.76	16.23	1.98	1.42	4.96	0.89	0.41	0.20
Ceuta	1.22	1.32	0.31	20.76	0.31	-	0.44	-	5.07	-
Melilla	6.98	0.10	1.06	8.18	0.53	0.44	0.74	0.05	0.78	4.46

8. Travellers, overnight stays and average stay by country of residence

Results by countries

Countries	Number of travellers		Overnight stays	
	Total	%	Total	%
TOTAL	10,590,214	100.00	41,513,116	100.00
Residents in Spain	5,597,983	52.86	17,218,120	41.48
Residents abroad	4,992,231	47.14	24,294,996	58.52
Total Residents abroad	4,992,231	100.00	24,294,996	100.00
Total Residents in U.E. (without Spain)	3,902,997	78.18	20,560,366	84.63
- Germany	895,855	17.94	6,173,511	25.41
- Austria	44,645	0.89	230,274	0.95
- Belgium	121,318	2.43	664,067	2.73
- Denmark	36,393	0.73	243,451	1.00
- Finland	13,755	0.28	55,529	0.23
- France	641,450	12.85	2,154,166	8.87
- Greece	20,489	0.41	62,623	0.26
- Ireland	56,850	1.14	262,824	1.08
- Italy	558,021	11.18	2,110,941	8.69
- Luxembourg	12,822	0.26	77,457	0.32
- Netherlands	176,832	3.54	970,140	3.99
- Poland	67,749	1.36	368,283	1.52
- Portugal	190,287	3.81	568,510	2.34
- United Kingdom	902,969	18.09	5,815,948	23.94
- Czech Republic	27,526	0.55	172,428	0.71
- Sweden	53,956	1.08	286,368	1.18
- Rest of UE*	82,079	1.64	343,843	1.42
Norway	32,968	0.66	174,513	0.72
Russia	174,956	3.50	1,173,656	4.83
Switzerland	67,403	1.35	365,443	1.50
Rest of Europe	96,277	1.93	360,606	1.48
Japan	53,226	1.07	91,860	0.38
United States of America	179,516	3.60	419,408	1.73
Rest of America	244,327	4.89	545,792	2.25
African's countries	35,917	0.72	73,396	0.30
Rest of the world	204,643	4.10	529,955	2.18

*Countries included in the Rest of UE: Bulgaria, Cyprus, Slovakia, Slovenia, Estonia, Hungary, Latvia, Lithuania, Malta and Romania

Hotel Price Index (HPI). 2008 Base

August 2011

Provisional data

General Autonomous Cities and Communities and national indices

	Index	Interannual variation rate
TOTAL	96.3	1.8
Andalucía	94.6	-1.0
Aragón	65.6	-2.8
Asturias, Principado de	94.6	0.8
Balears, Illes	101.6	4.9
Canarias	97.4	2.7
Cantabria	92.5	-3.2
Castilla y León	94.8	-1.0
Castilla - La Mancha	91.9	-3.0
Cataluña	98.7	2.3
Comunitat Valenciana	92.7	1.6
Extremadura	96.9	3.0
Galicia	95.6	-3.2
Madrid, Comunidad de	89.0	3.3
Murcia, Región de	88.7	-2.2
Navarra, Comunidad Foral de	93.8	-1.4
País Vasco	96.6	0.3
Rioja, La	91.3	-0.1
Ceuta	113.9	7.2
Melilla	90.9	-5.3

National General Index and breakdown by categories

	Index	Interannual variation rate
TOTAL	96.3	1.8
HOTELS: Gold stars		
Five	88.4	1.0
Fourth	95.8	1.9
Three	97.6	2.3
Two	99.6	-0.2
One	102.5	3.1
HOSTALS: Silver stars		
Three and two	98.0	1.8
One	97.1	2.6

Indicators on the Profitability of the Hotel Sector

August 2011

Provisional data

ADR and RevPAR for Autonomous Cities and Communities and national indices

	ADR (in euros)	Variation Rate variation	RevPar (in euros)	Variation Rate variation
TOTAL	81.8	2.3	59.4	6.3
Andalucía	101.0	-0.9	68.1	-1.9
Aragón	59.5	-1.9	24.5	0.4
Asturias, Principado de	74.3	2.6	47.7	2.8
Balears, Illes	82.8	5.0	77.3	10.5
Canarias	75.0	2.3	62.3	11.8
Cantabria	86.5	-0.9	53.8	-10.2
Castilla y León	56.9	-0.3	27.5	3.1
Castilla - La Mancha	58.4	-1.7	20.2	-1.9
Cataluña	83.8	3.7	65.2	6.0
Comunitat Valenciana	84.8	6.9	63.4	10.2
Extremadura	58.5	2.1	23.7	12.4
Galicia	64.9	-1.6	35.3	-11.1
Madrid, Comunidad de	72.8	5.5	42.1	33.8
Murcia, Región de	73.5	-7.6	38.4	-10.0
Navarra, Comunidad Foral de	63.0	-3.4	33.4	1.0
País Vasco	82.9	-4.8	61.2	-1.1
Rioja, La	61.3	2.1	35.9	6.4
Ceuta	72.7	-0.3	41.7	-3.7
Melilla	66.9	-2.0	46.6	1.5

National ADR and RevPar and breakdown by categories

	ADR (in euros)	Variation Rate interannual	RevPar (in euros)	Variation Rate interannual
TOTAL	81.8	2.3	59.4	6.3
HOTELS: Gold stars				
Five	166.4	0.3	114.9	6.4
Four	93.6	1.3	74.8	4.9
Three	71.4	3.6	57.6	9.2
Two	63.5	-0.2	39.4	0.6
One	56.5	1.8	30.1	-1.5
GUESTHOUSES: Silver stars				
Three and two	50.3	-2.4	24.1	-5.9
One	45.1	9.7	20.5	18.7

Due to the updating in the establishments directory carried out in Navarra in January 2011 and in Extremadura in March 2011, the data to be published for Navarra, Extremadura and the national total from those dates are not directly comparable with the data published last year, therefore data link coefficients have been calculated to allow the comparison of data between different years. These coefficients are available in INE website (www.ine.es)